

Daily Coordination Meeting



Daily Coordination Meeting

General Topics:

- **Holiday Week - Remain Focused**
- **Eliminate Gaps in Supervision**
- **Tuesday 29 April – Normal workday**
- **Wednesday 30 April – Gates close at 12:00**
- **Thursday – Saturday 01 May-03 May Site Closed**
- **Gates Re-open Sunday 04 May and MSM at 07:00**



HOFFMAN CONSTRUCTION COMPANY

UTILITY LEVEL MOD1

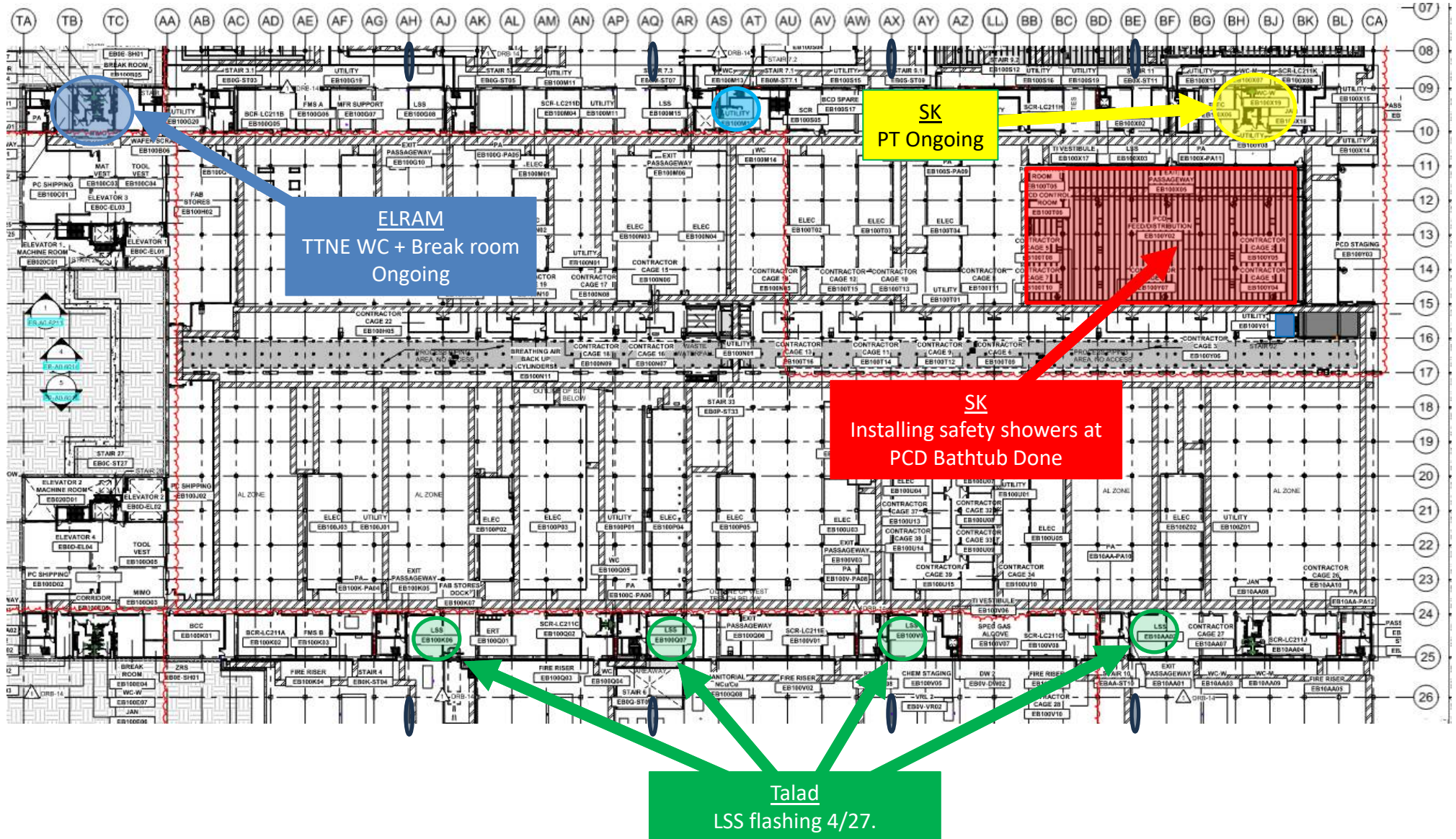


FAB Subs Meeting
SUT/UL/Skin

Subcontractors meeting is back
Every **MONDAY** 9:30 to 10:30

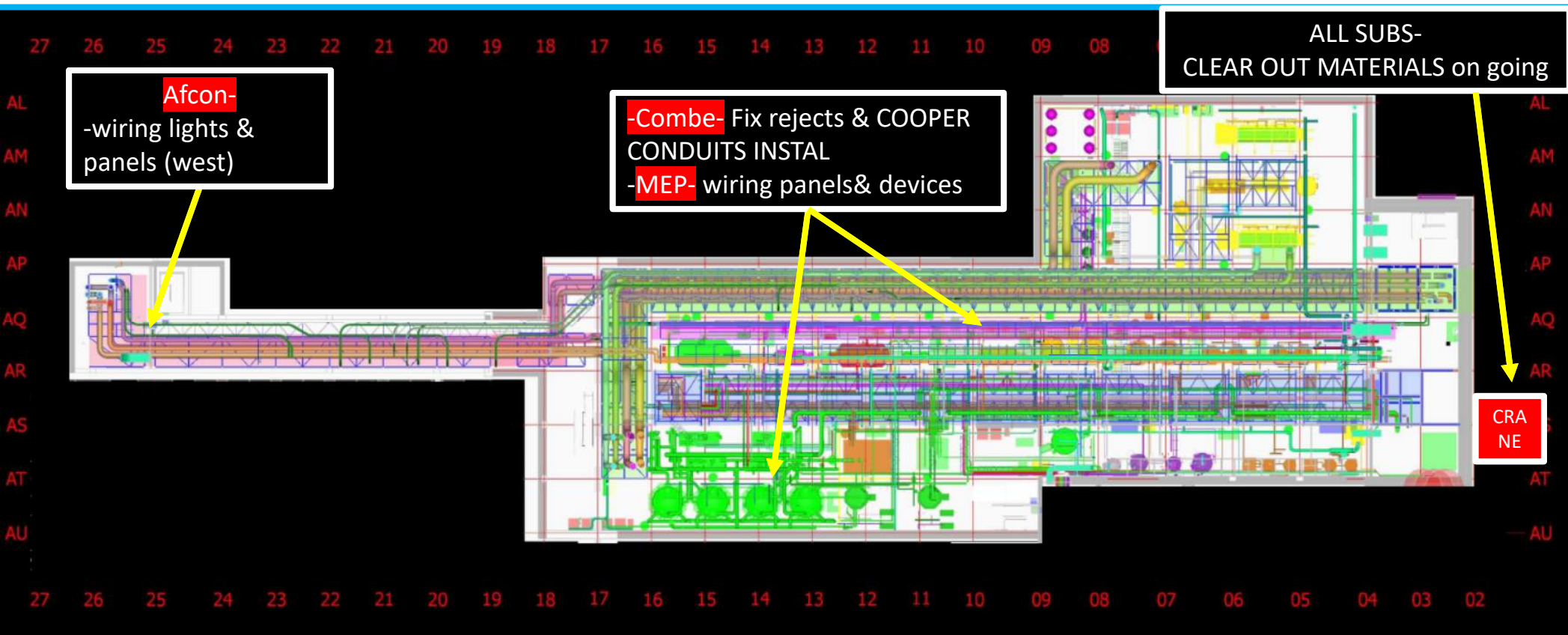


UTILITY LEVEL MOD1



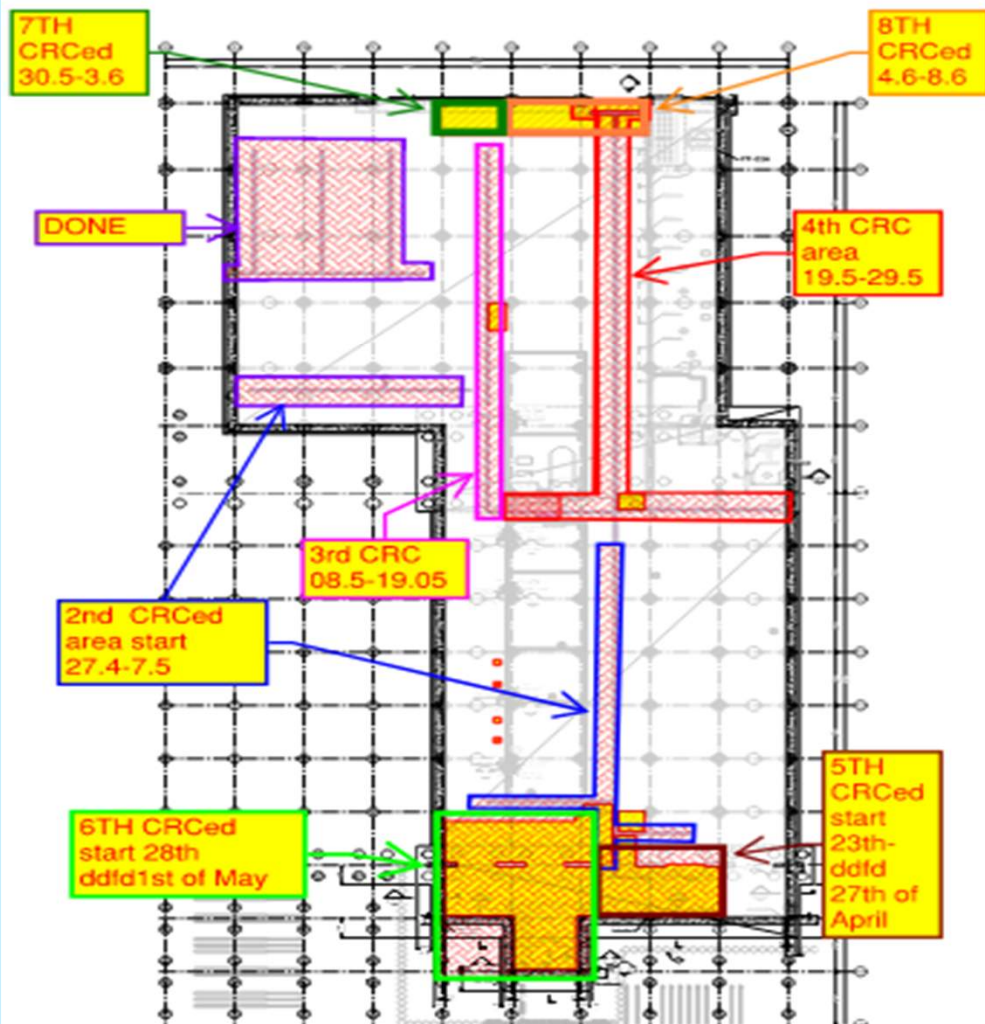


SUT 38.1 LEVEL

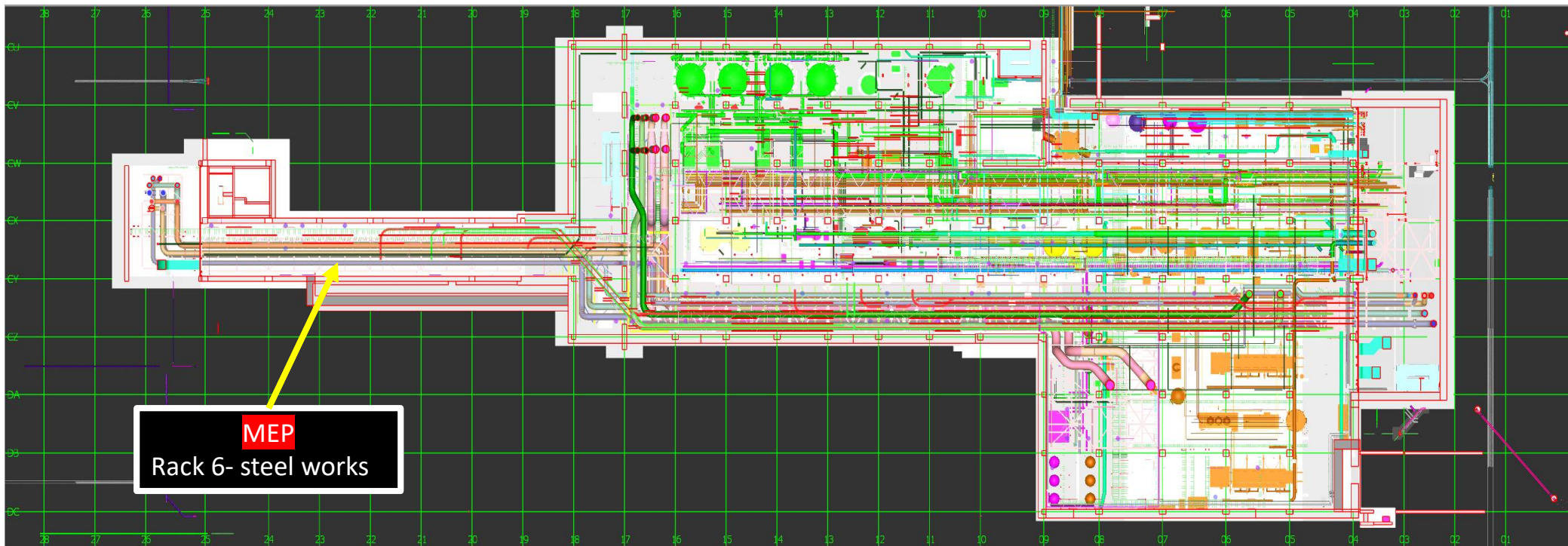


SUT 1
CRC AREAS WORKS SEQUENCE
 each area MAX 10 WD duration

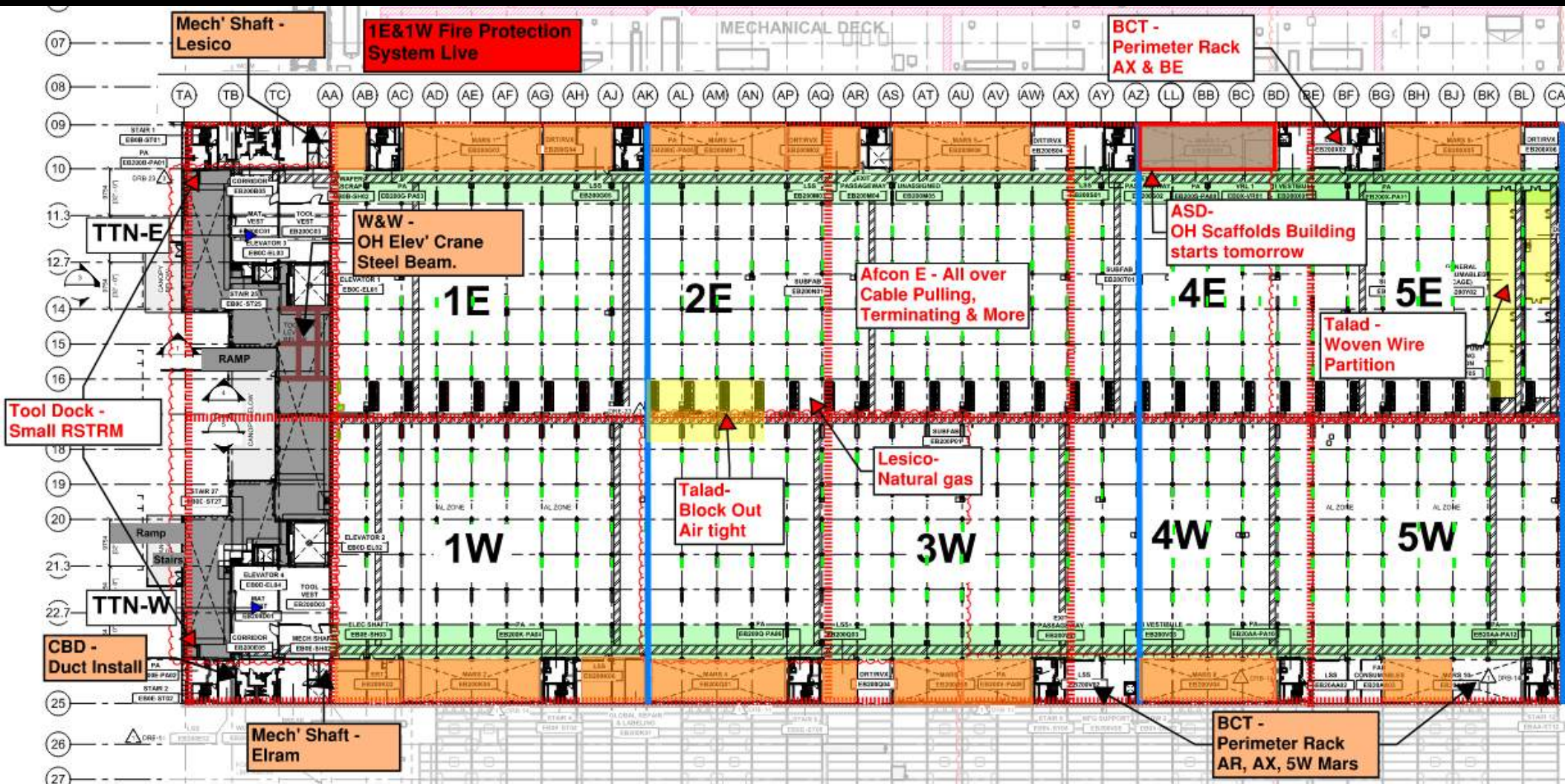
| sut 1 crc sequence | | |
|--------------------|------------|-----------------|
| SEQUENCE | start date | completion date |
| 1 | done | |
| 2 | 27.4 | 7.5 |
| 3 | 8.5 | 19.5 |
| 4 | 19.5 | 29.5 |
| 5 | 23.4 | 27.4 |
| 6 | 28.4 | 1.5 |
| 7 | 1.6 | 3.6 |
| 8 | 4.6 | 8.6 |



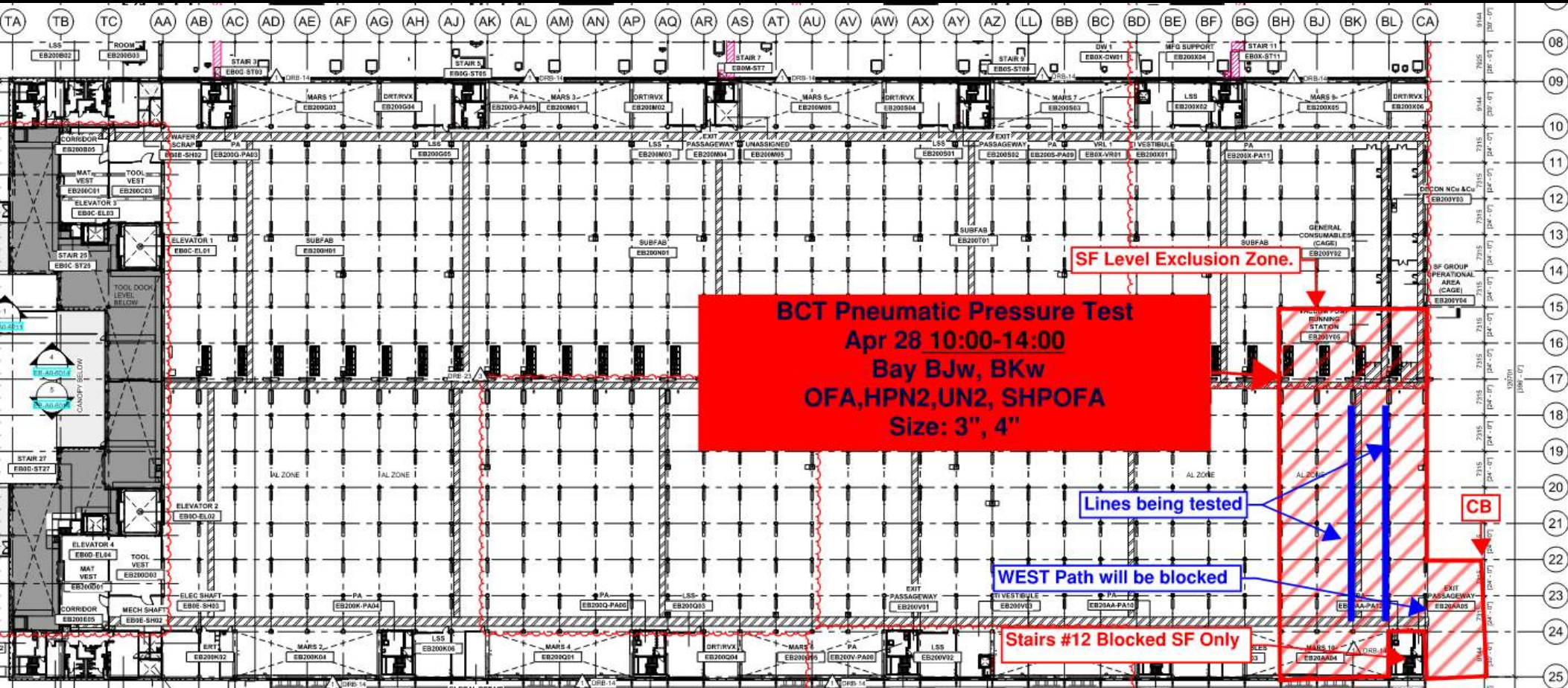
SUT 38.2 LEVEL



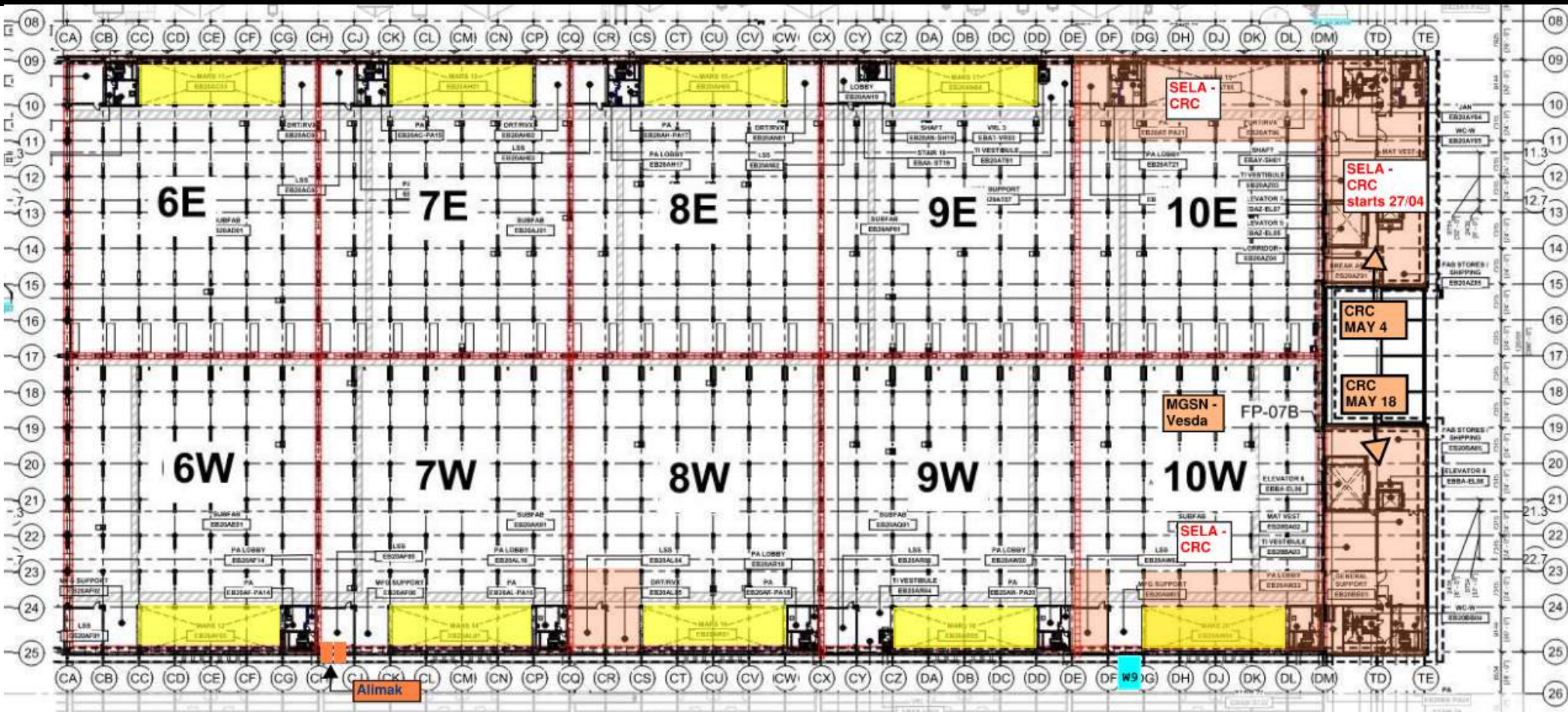
SUBFAB BUILDOUT MOD 1

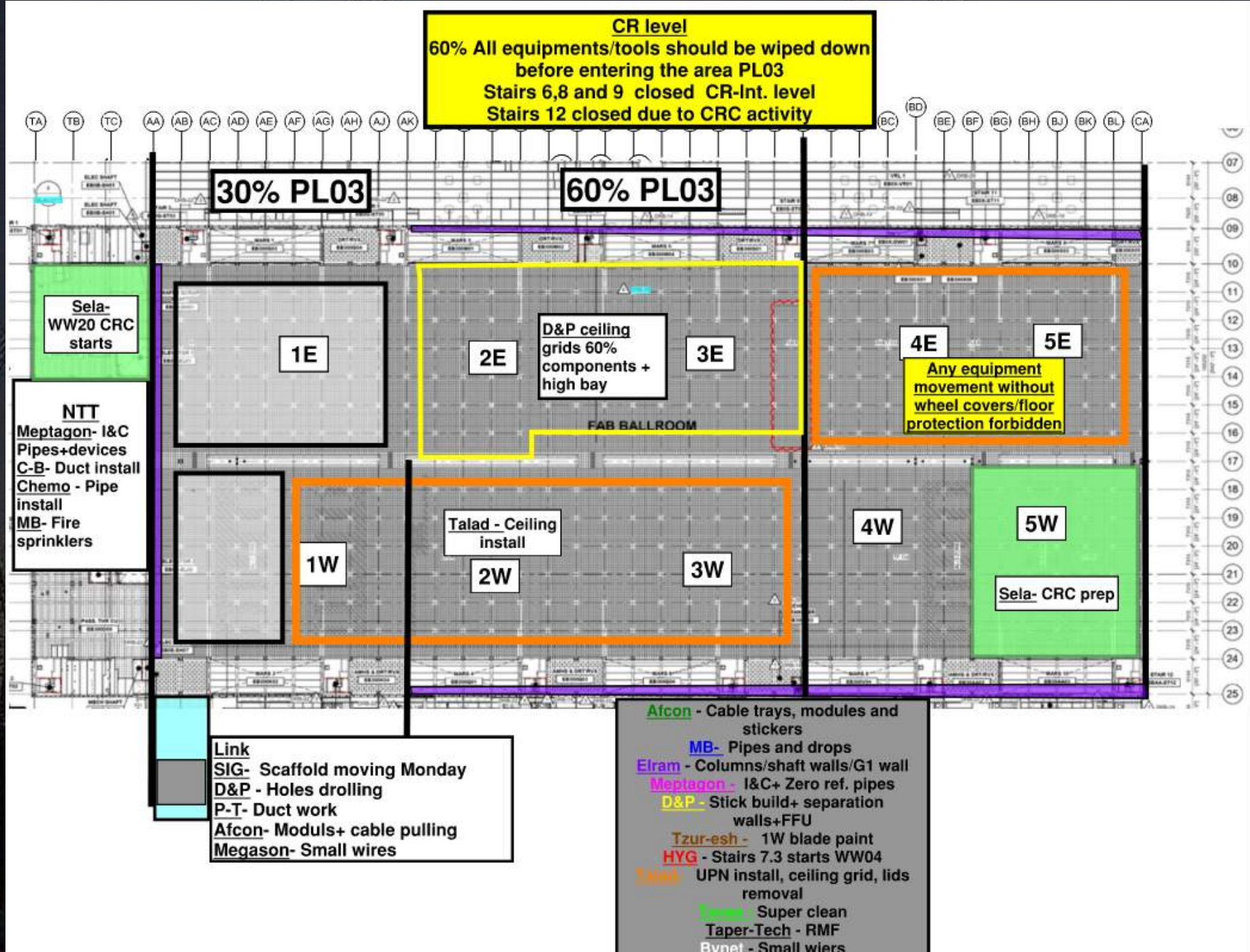


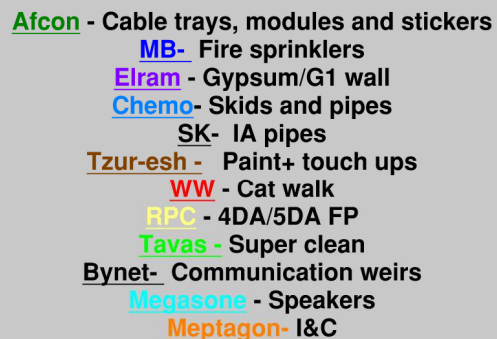
BCT Pressure Test Tomorrow



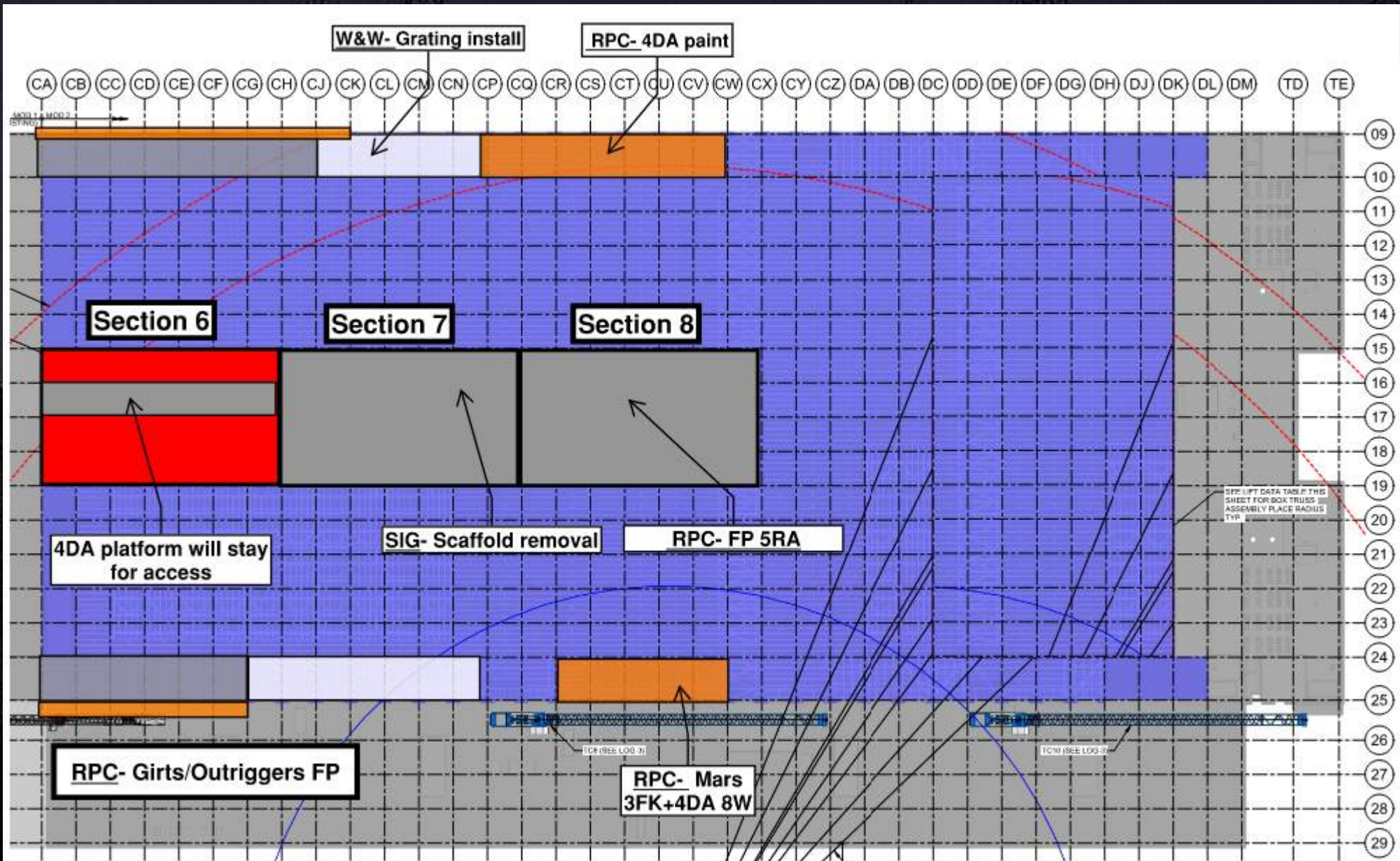
SUBFAB BUILDOUT MOD 2

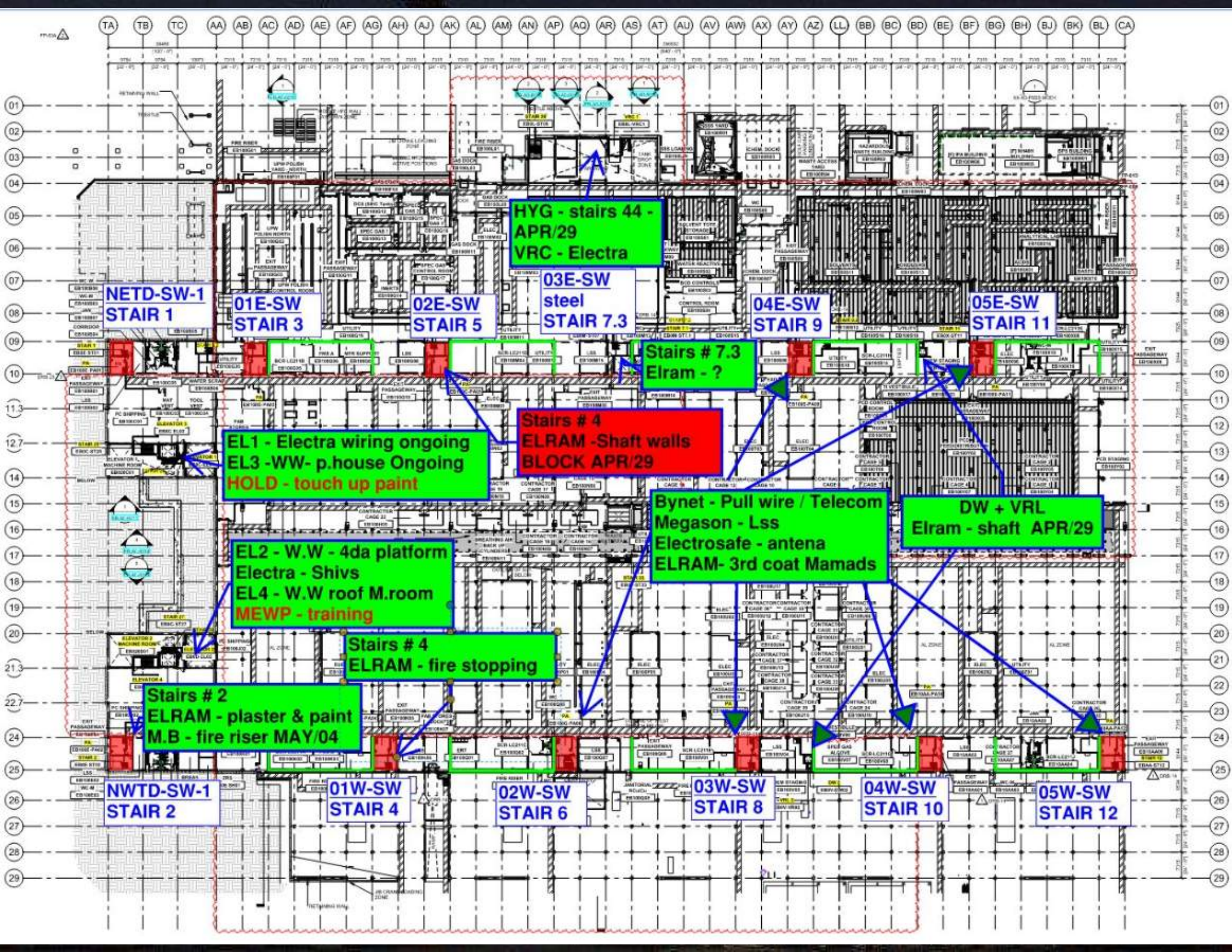




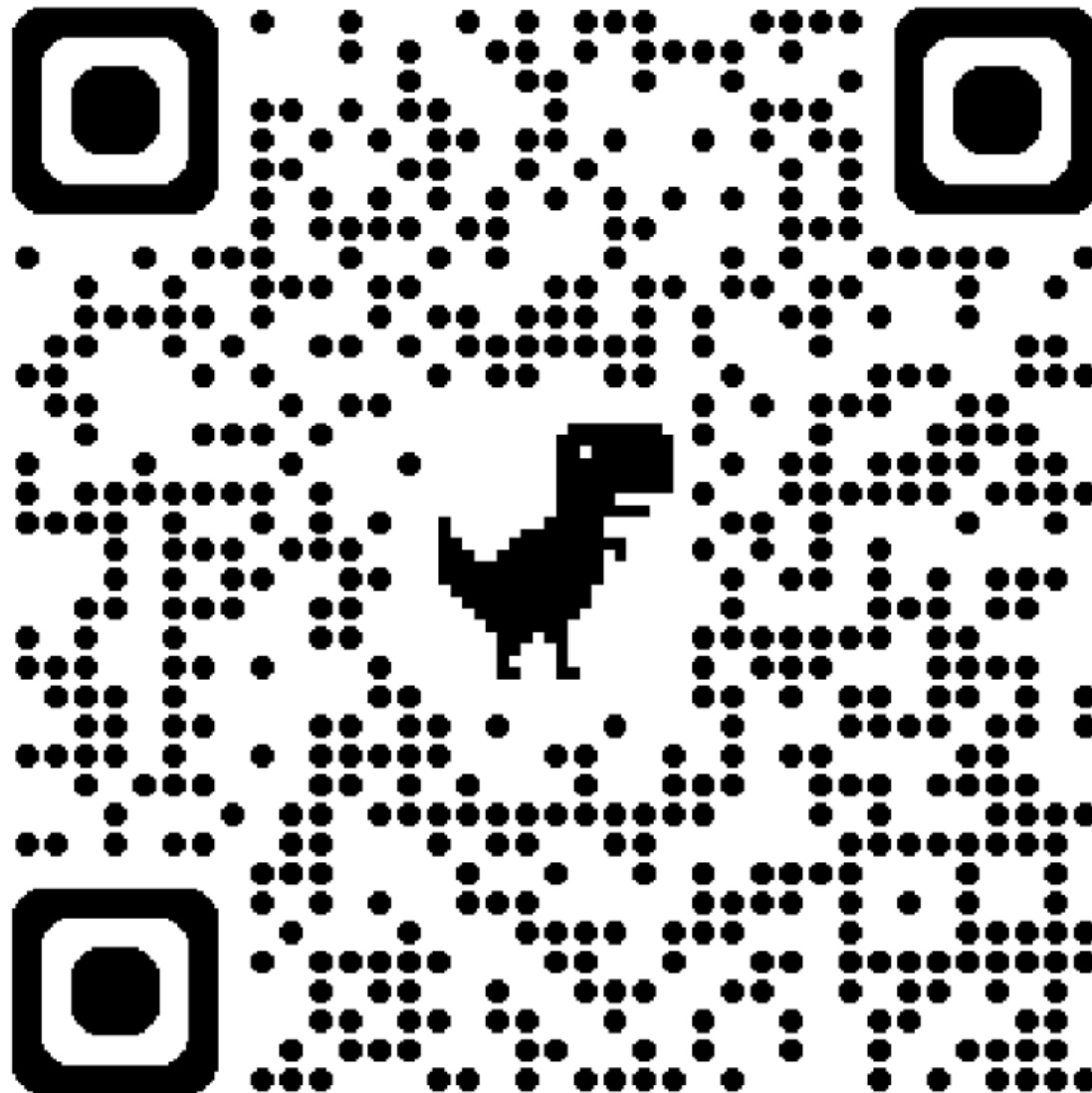


Int. level
Walk on FRP is approved.
Do not move carts/ stage
material without plywood

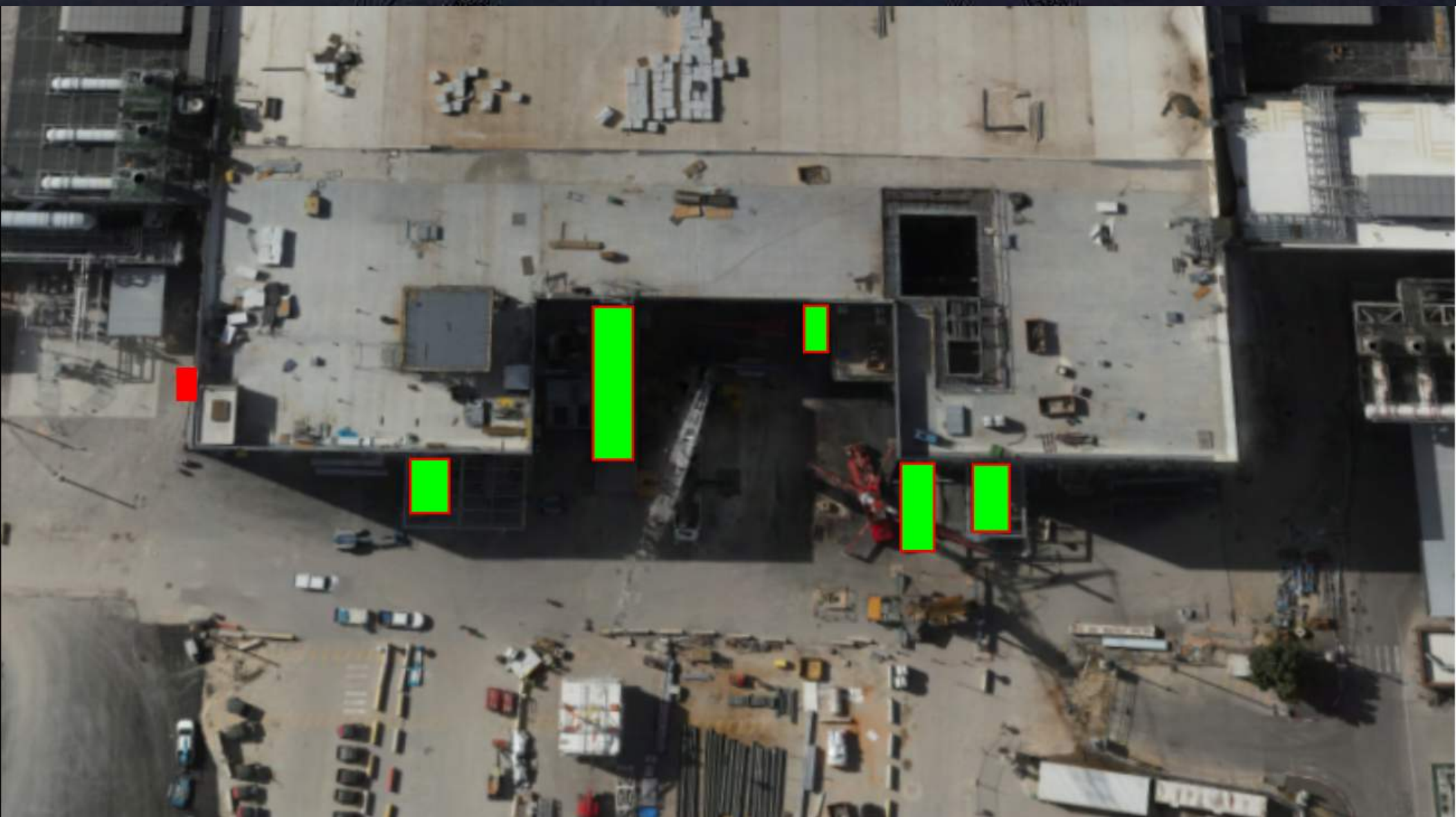




Request Form



Subcontractor must fill out and submit all required cells in order to get a penetration cut through the siding.



MOD 2 WESTSIDE GIRTS/SIDING

- READY FOR GIRTS
- INSTALLING GIRTS
- READY FOR PANELS
- PANELS INSTALLED

| | | | | | | | | | | | |
|---------------|------------------|---------------|-----------------------|---------------|---------------|---------------|---------------|---------------|---------------|---------------|---------------|
| 2602/ 2601 | M I M O | 2612/ 2611 | MIMO 2622/ 2621 | 2632/ 2631 | 2642/ 2641 | 2652/ 2651 | 2812/ 2811 | 2822/ 2821 | 2832/ 2831 | 2842/ 2841 | 2852/ 2851 |
|---------------|------------------|---------------|-----------------------|---------------|---------------|---------------|---------------|---------------|---------------|---------------|---------------|

MOD 2 EASTSIDE GIRTS/SIDING



| | | | | | | | | | | |
|---------------|---------------|---------------|---------------|---------------|---------------|---------------|---------------|---------------|---------------|---------------|
| 2752/ 2751 | 2742/ 2741 | 2732/ 2731 | 2722/ 2721 | 2712/ 2711 | 2552/ 2551 | 2542/ 2541 | 2532/ 2531 | 2522/ 2521 | 2512/ 2511 | 2502/ 2501 |
|---------------|---------------|---------------|---------------|---------------|---------------|---------------|---------------|---------------|---------------|---------------|

| | |
|------------------|-------------------------------------------------------------------------------------|
| READY FOR GIRTS |  |
| INSTALLING GIRTS |  |
| READY FOR PANELS |  |
| PANELS INSTALLED |  |

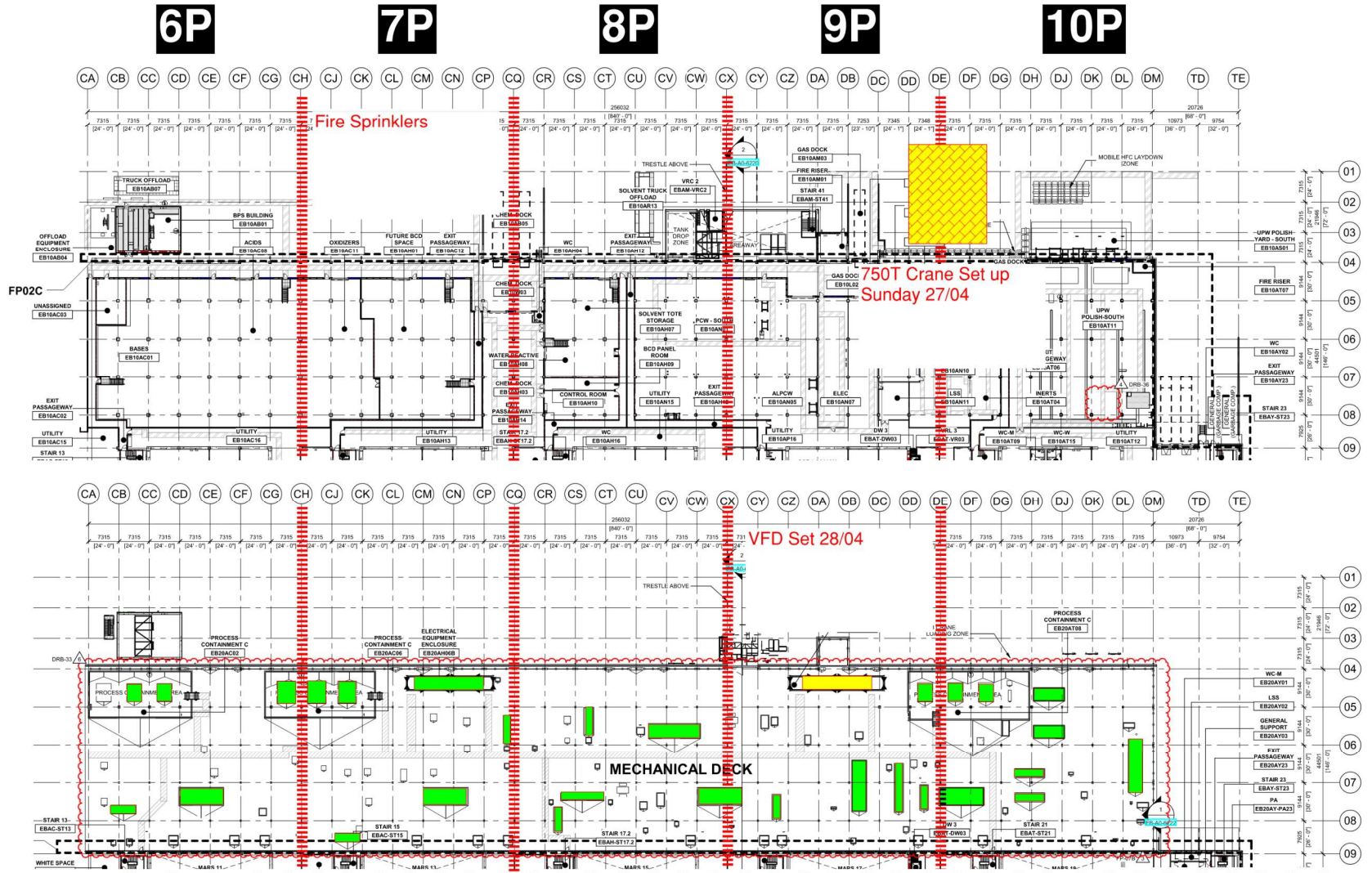
Utility Level 1YA



PSSS.2

Utility Level 1YA

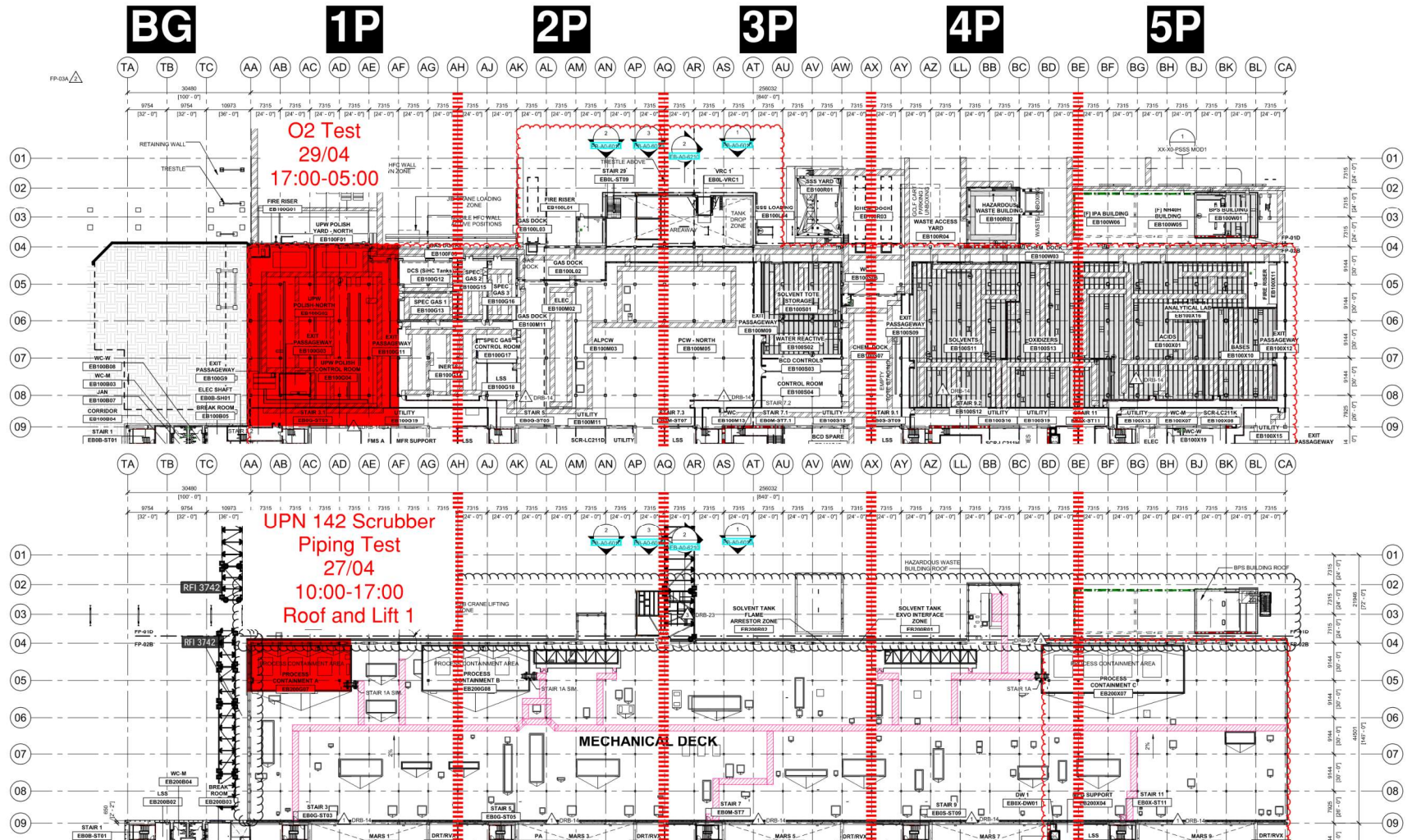
PSSS Roof 2SA



PSSS Pressure Tests

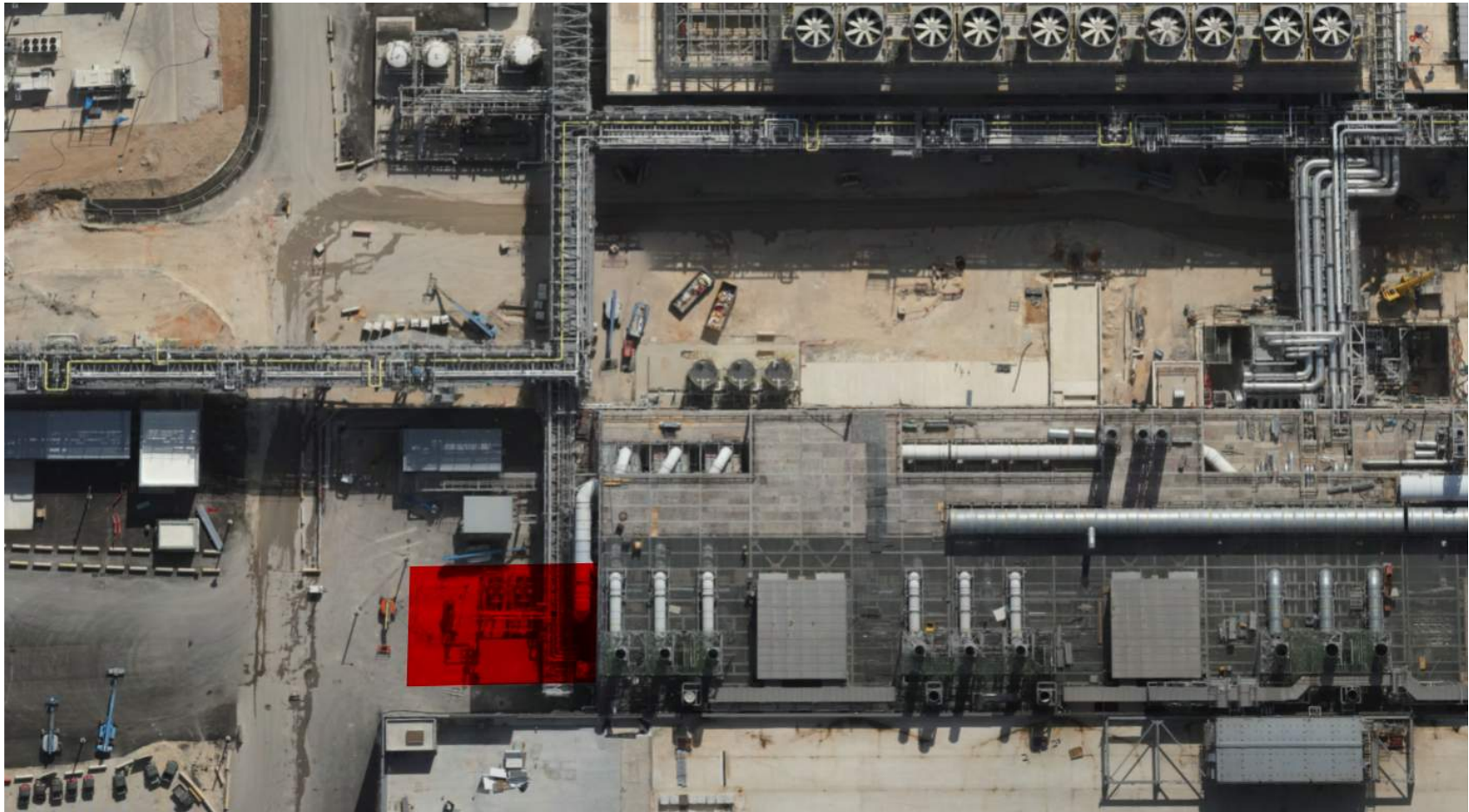
Utility Level 1YA

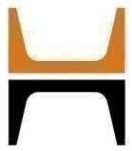
PSSS Roof 2SA



BGY GN2 Purging

21st-27th
continuous
noise
BGY West
Canopy
Closed





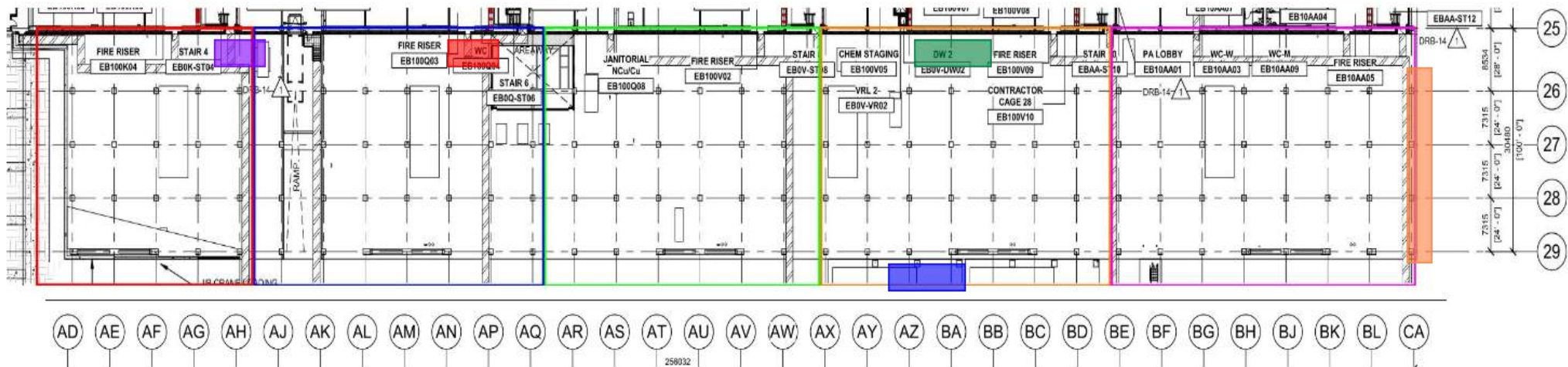
WJG – UL

* Carmel Bidud - erection of scaffold for flashing measurements and installation.

* A.A. scaffold - scaffold for MB is yellow tag. it's go time!

* Carmel Bidud - performing measurements for flashing

W&W - finalizing connections to MOD2 on CA line

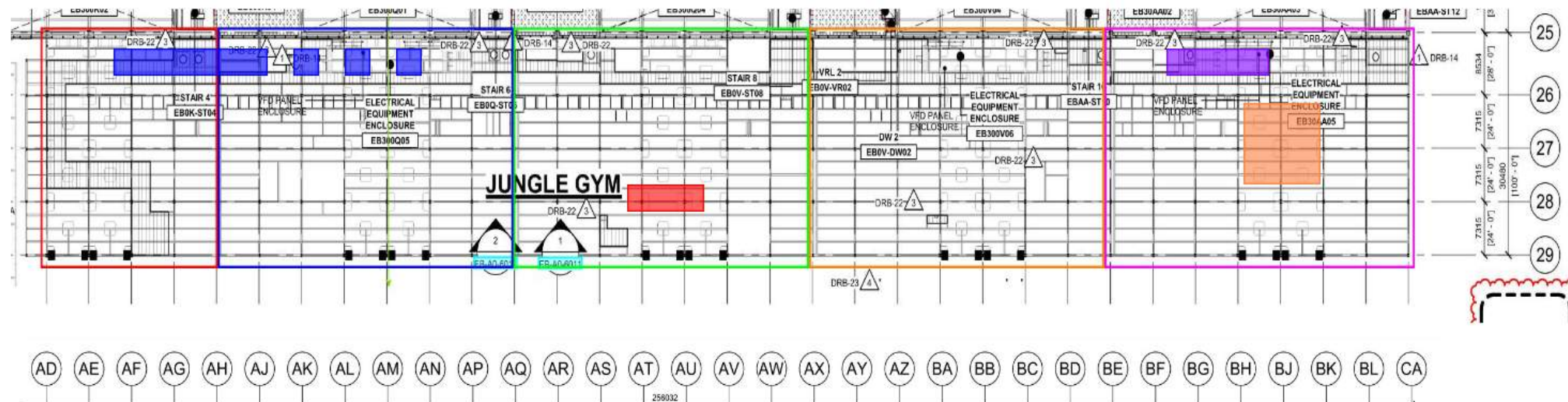


WJG – Lift 2

* Taper tech - fixing planking after stiffeners installation

* Pach Taas - misc work and punch list

* SK - working on connections to MAH
* Afcon - installation of cable tray underneath MAH



WJG – Lift 3

| | | | | |
|--|-----------------------------------------------------|-------------------------------|--|--|
| | * SN - installing and welding penetrations supports | * SN - handrails installation | | |
|--|-----------------------------------------------------|-------------------------------|--|--|

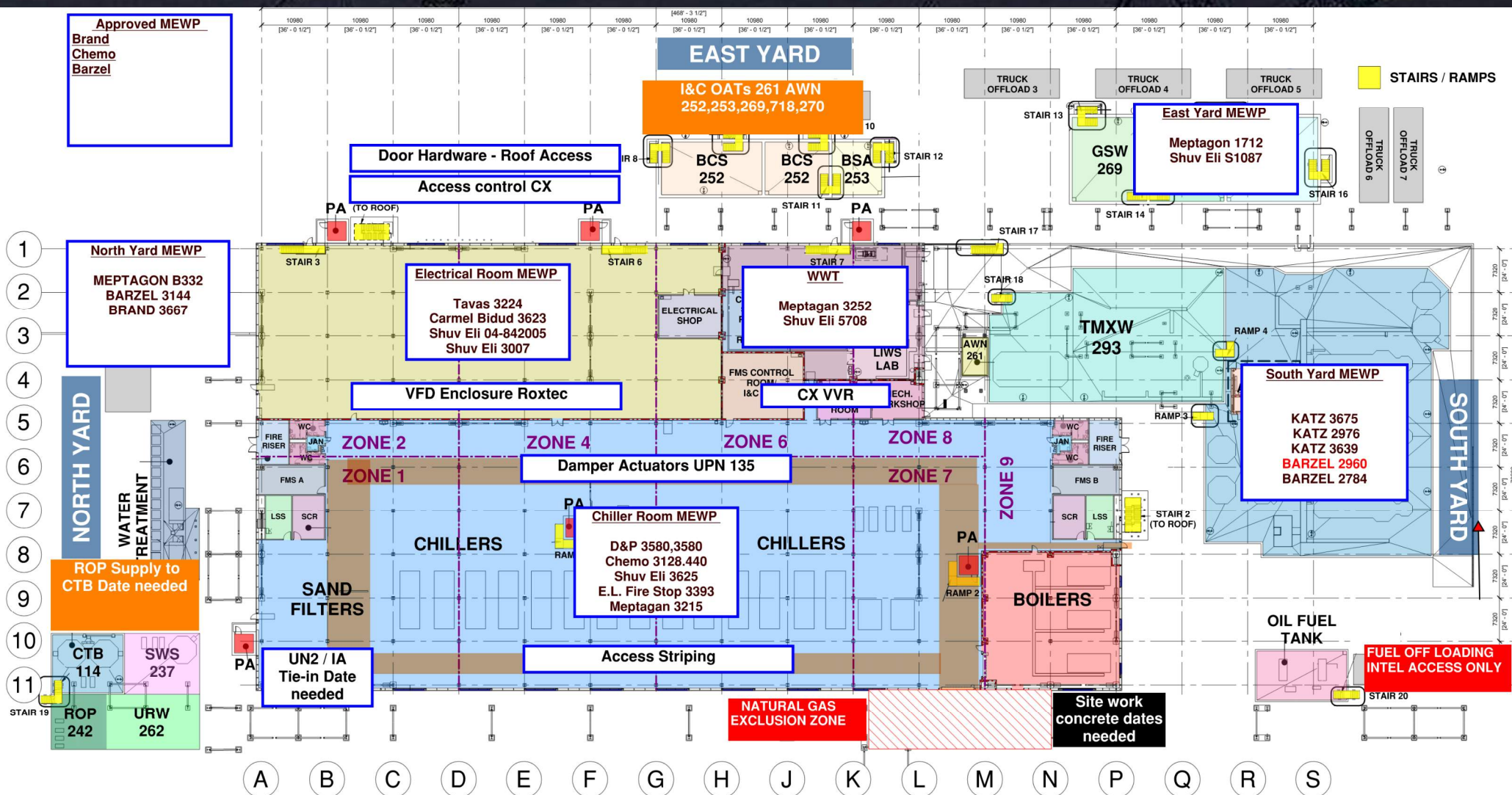


Approved MEWP

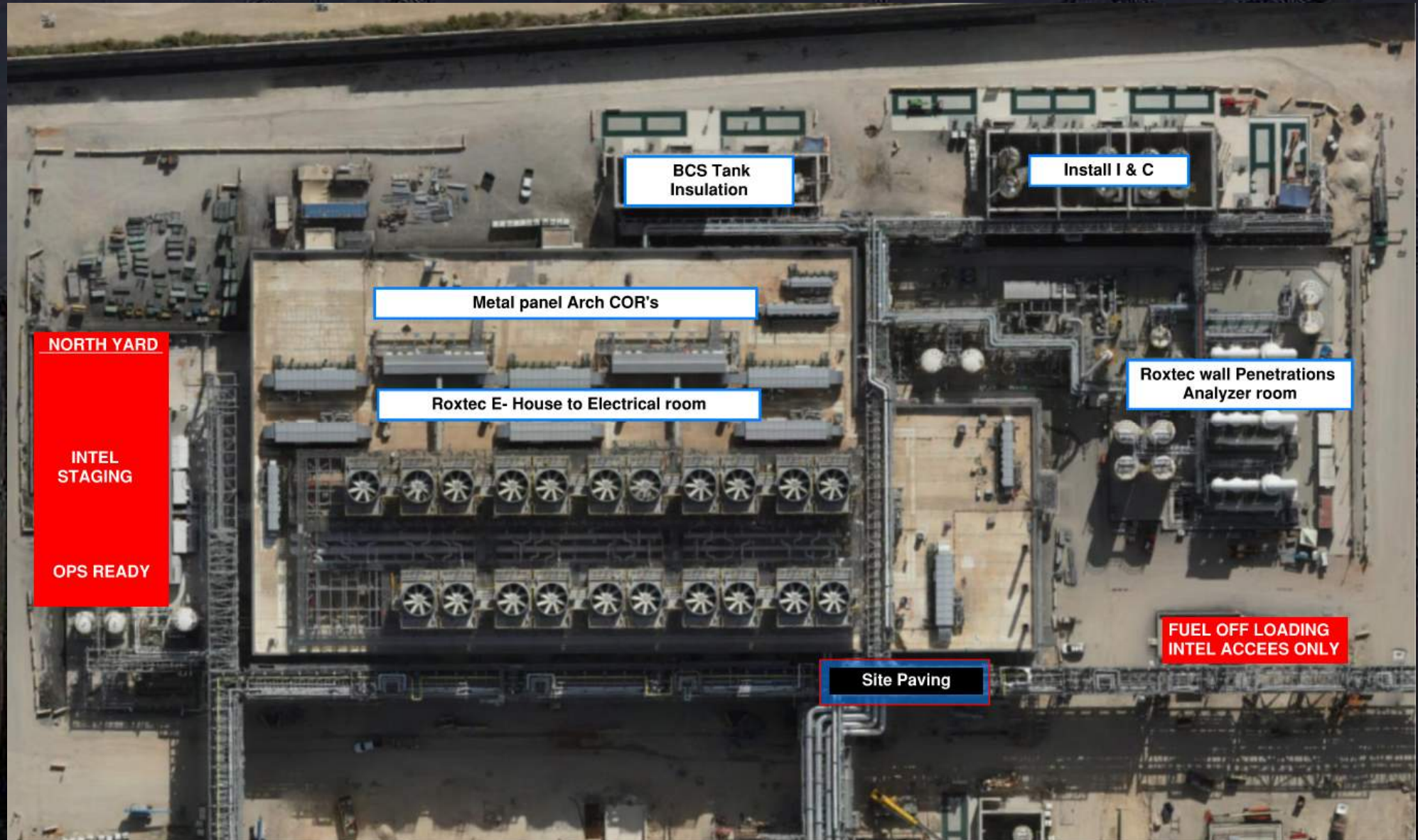
Brand

Chemo

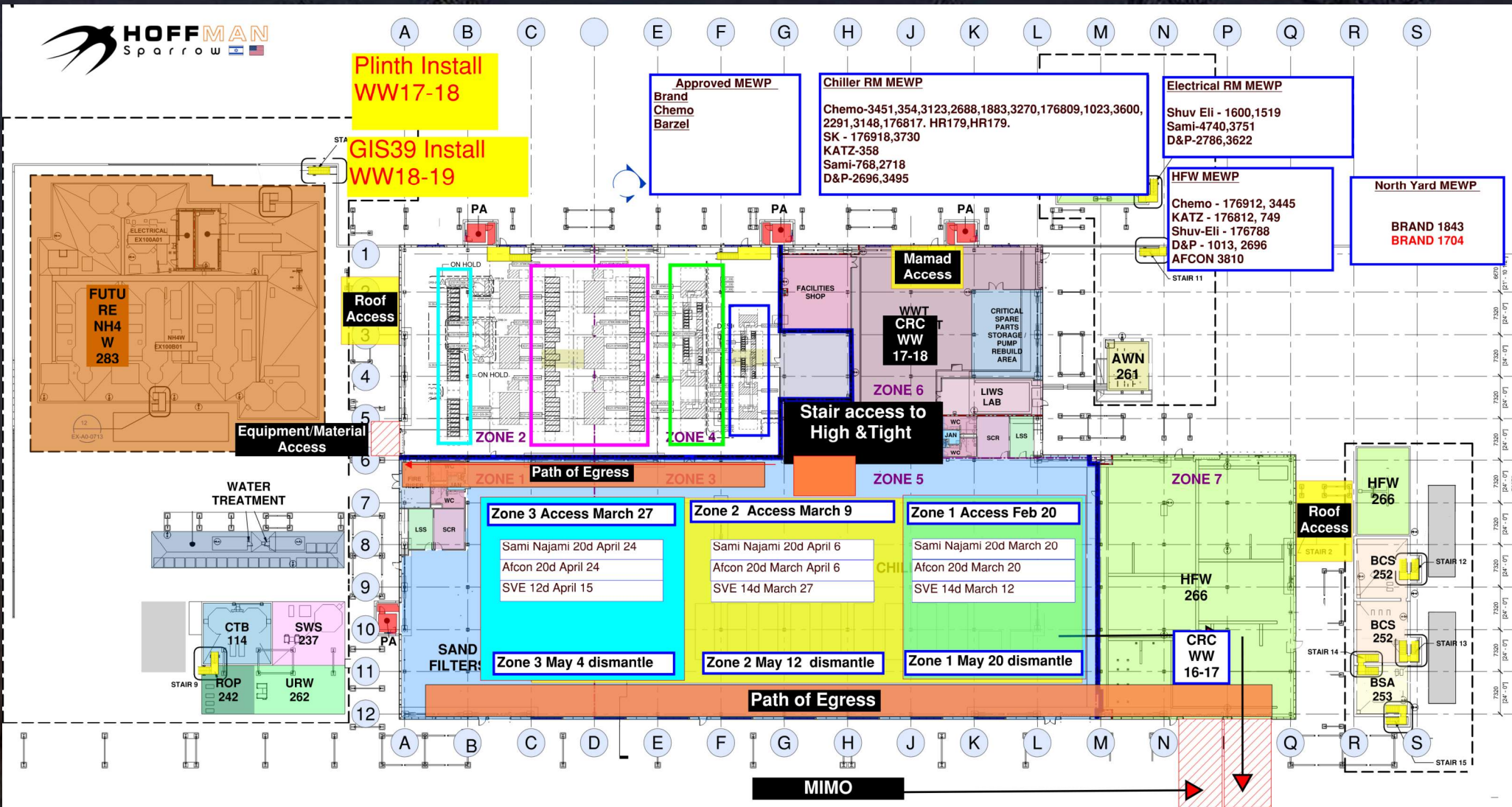
Barzel



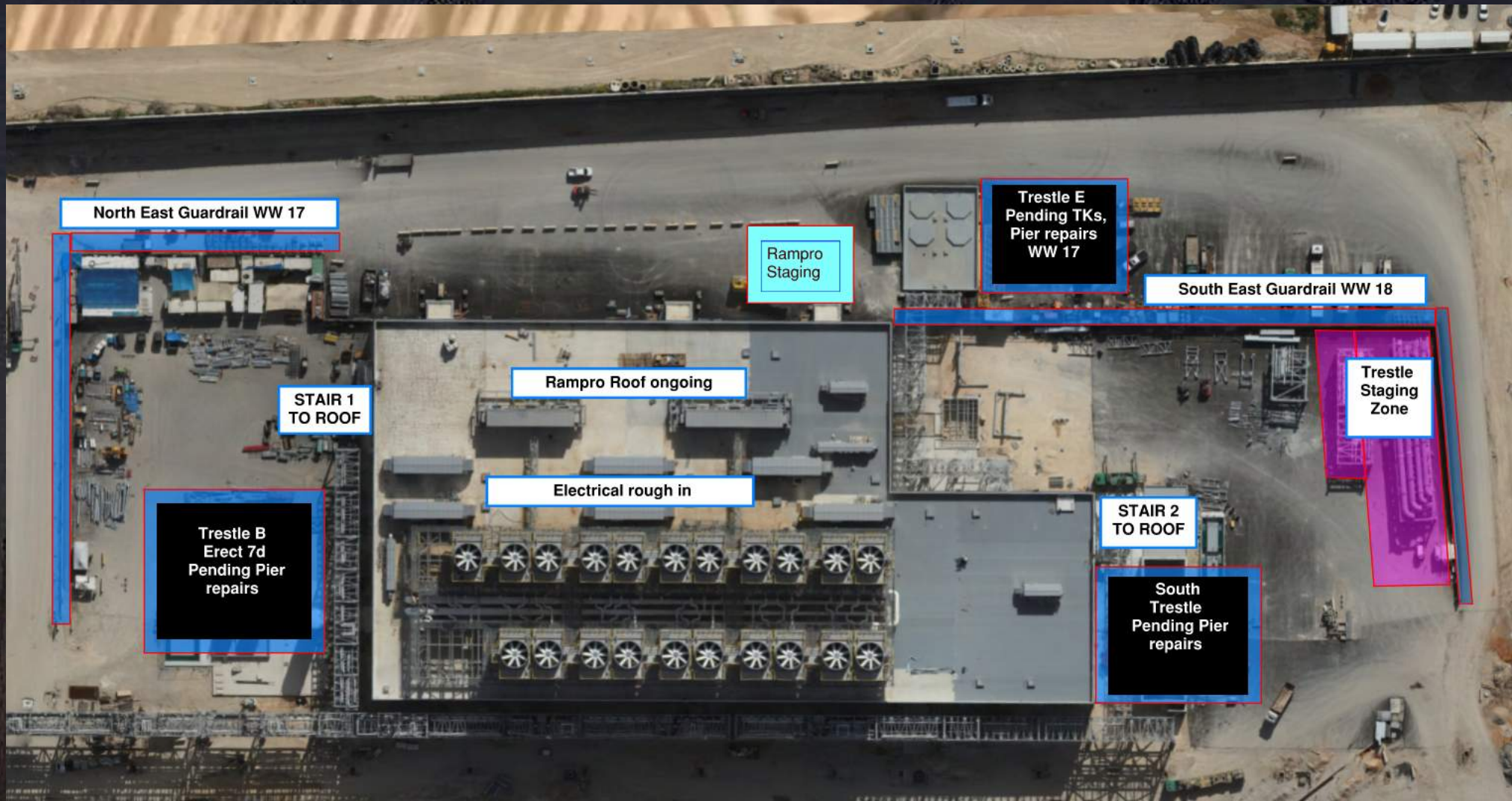
CUB 1 – EXTERIOR/ROOF

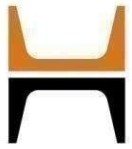


CUB 2- Load in & H&T



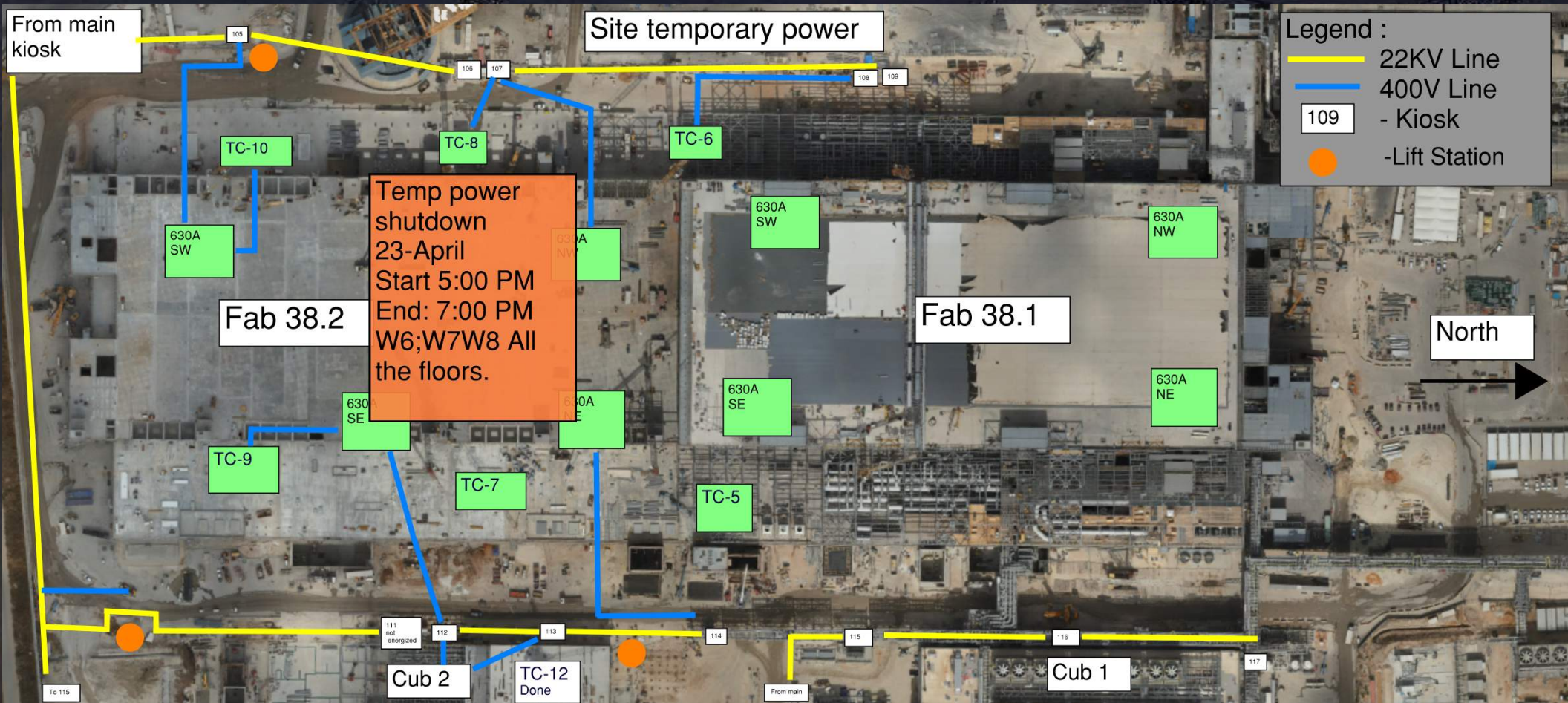
CUB 2- Trestles/Roof/Guardrails





HOFFMAN CONSTRUCTION COMPANY





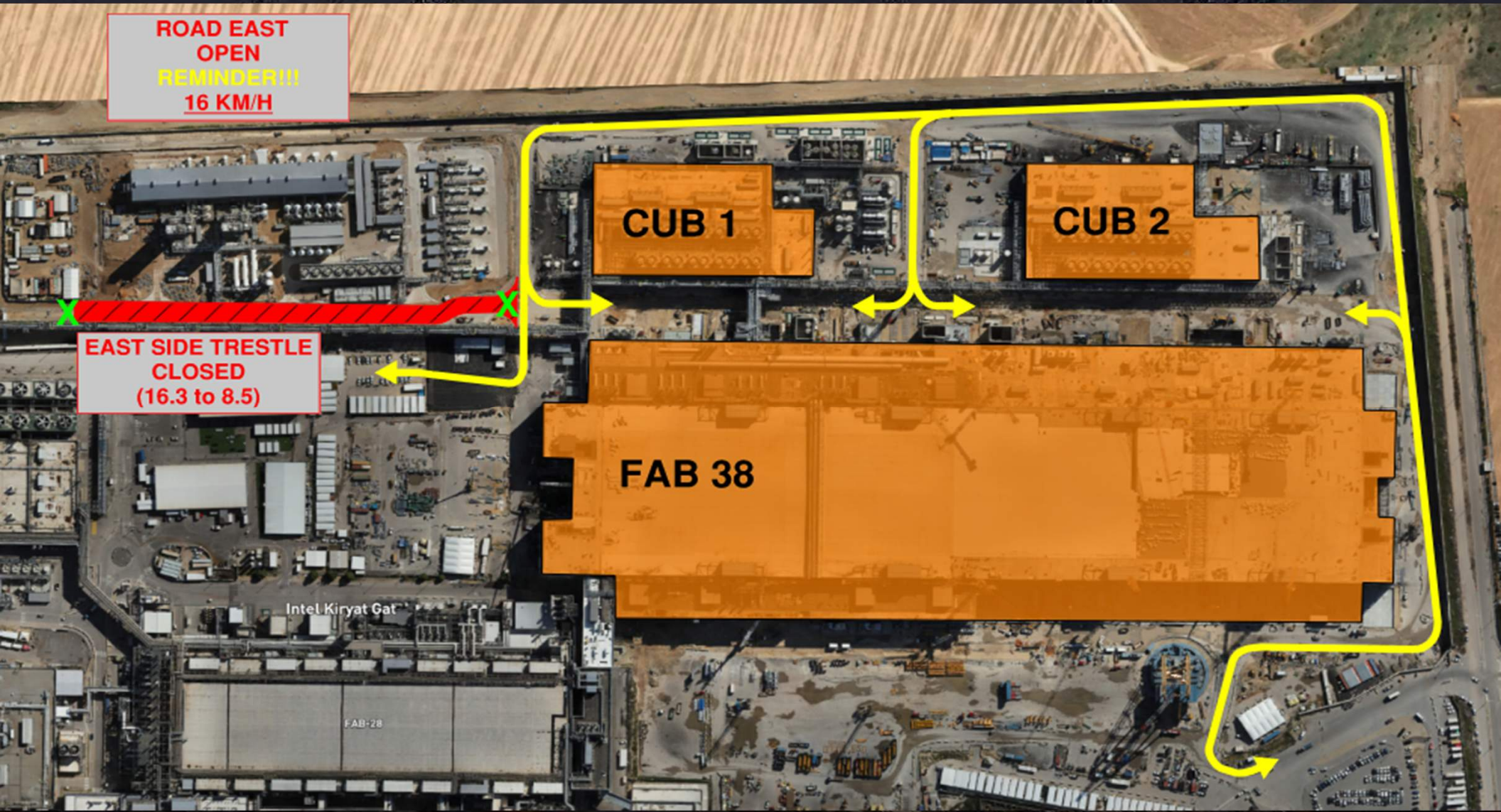


HOFFMAN CONSTRUCTION COMPANY



Daily Coordination Meeting

Site Logistics





Daily Coordination Meeting

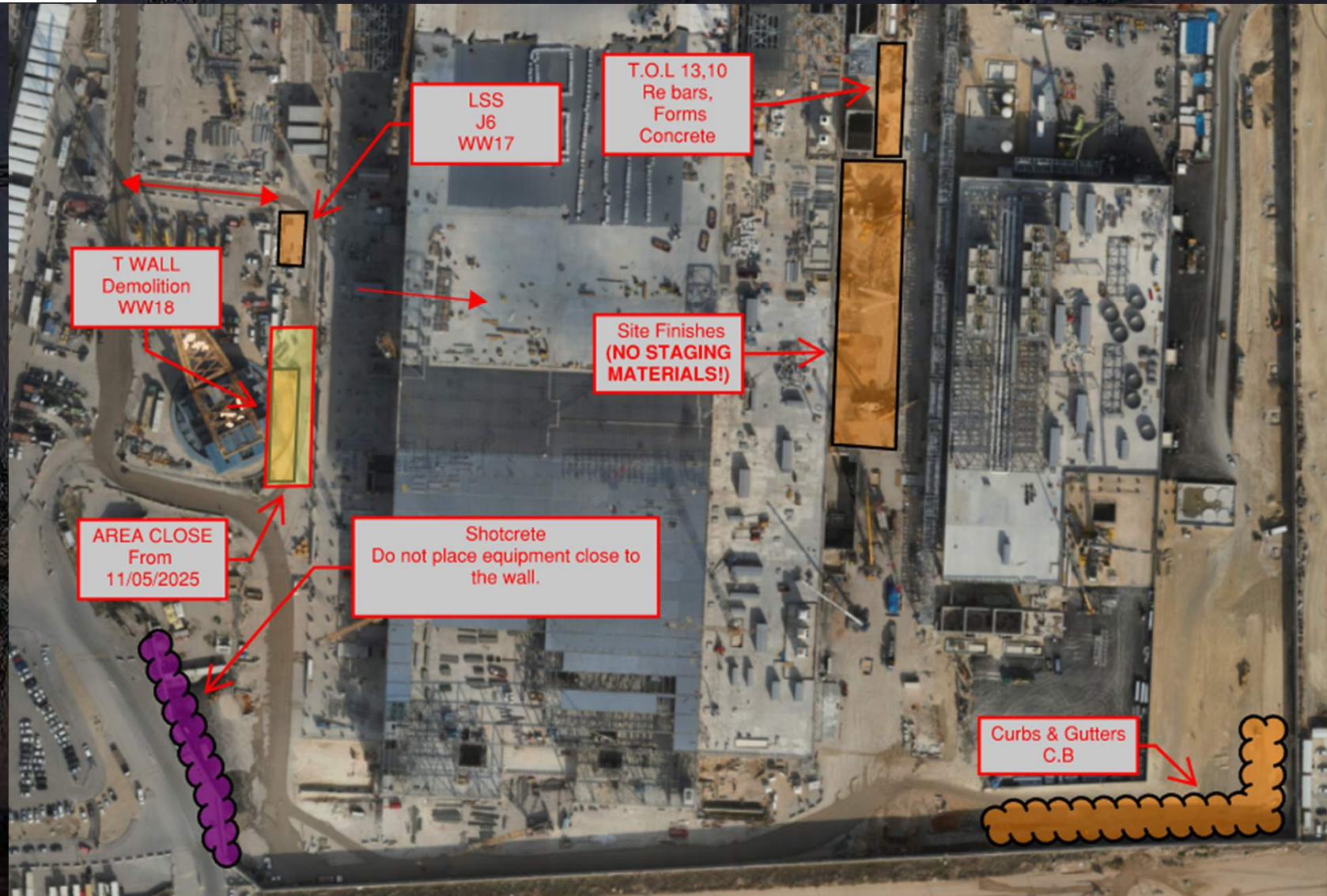
Site Logistics: North





Daily Coordination Meeting

Site Logistics: South





HOFFMAN CONSTRUCTION COMPANY

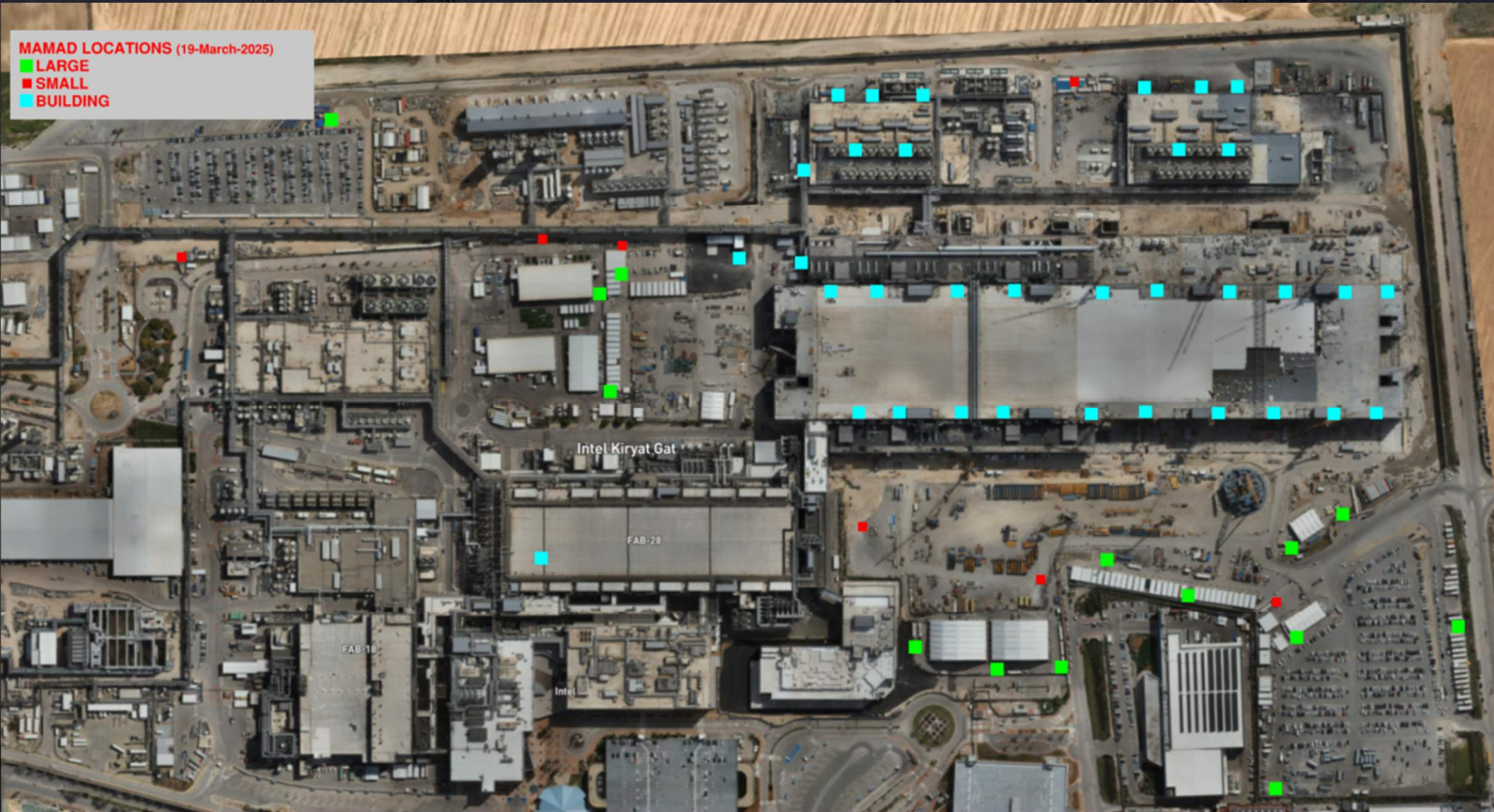


Daily Coordination Meeting

MAMAD Locations

MAMAD LOCATIONS (19-March-2025)

- LARGE
- SMALL
- BUILDING





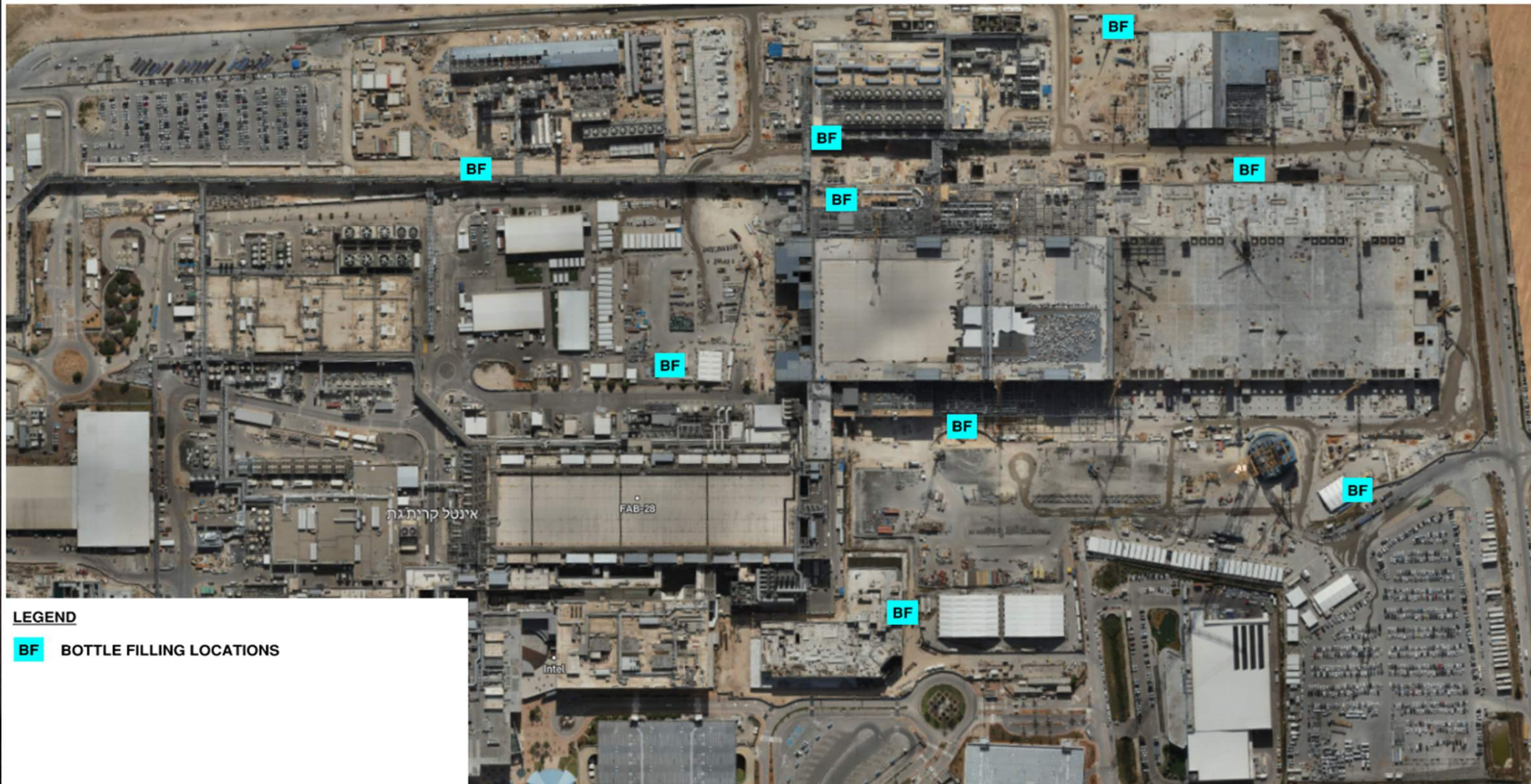
HOFFMAN CONSTRUCTION COMPANY



Daily Coordination Meeting

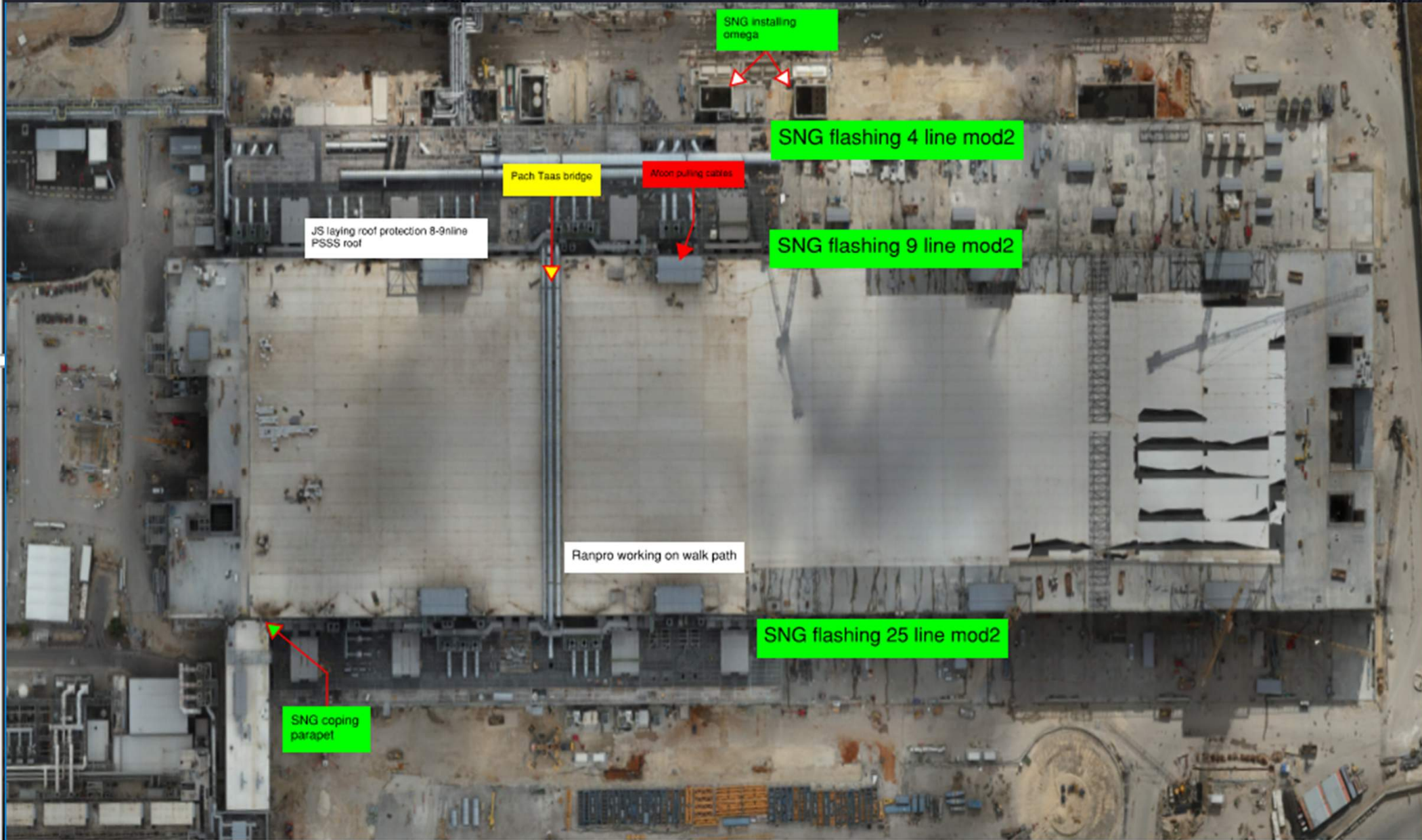
WATER BOTTLE FILLING STATIONS

WATER BOTTLE FILLING STATIONS



LEGEND

BF BOTTLE FILLING LOCATIONS





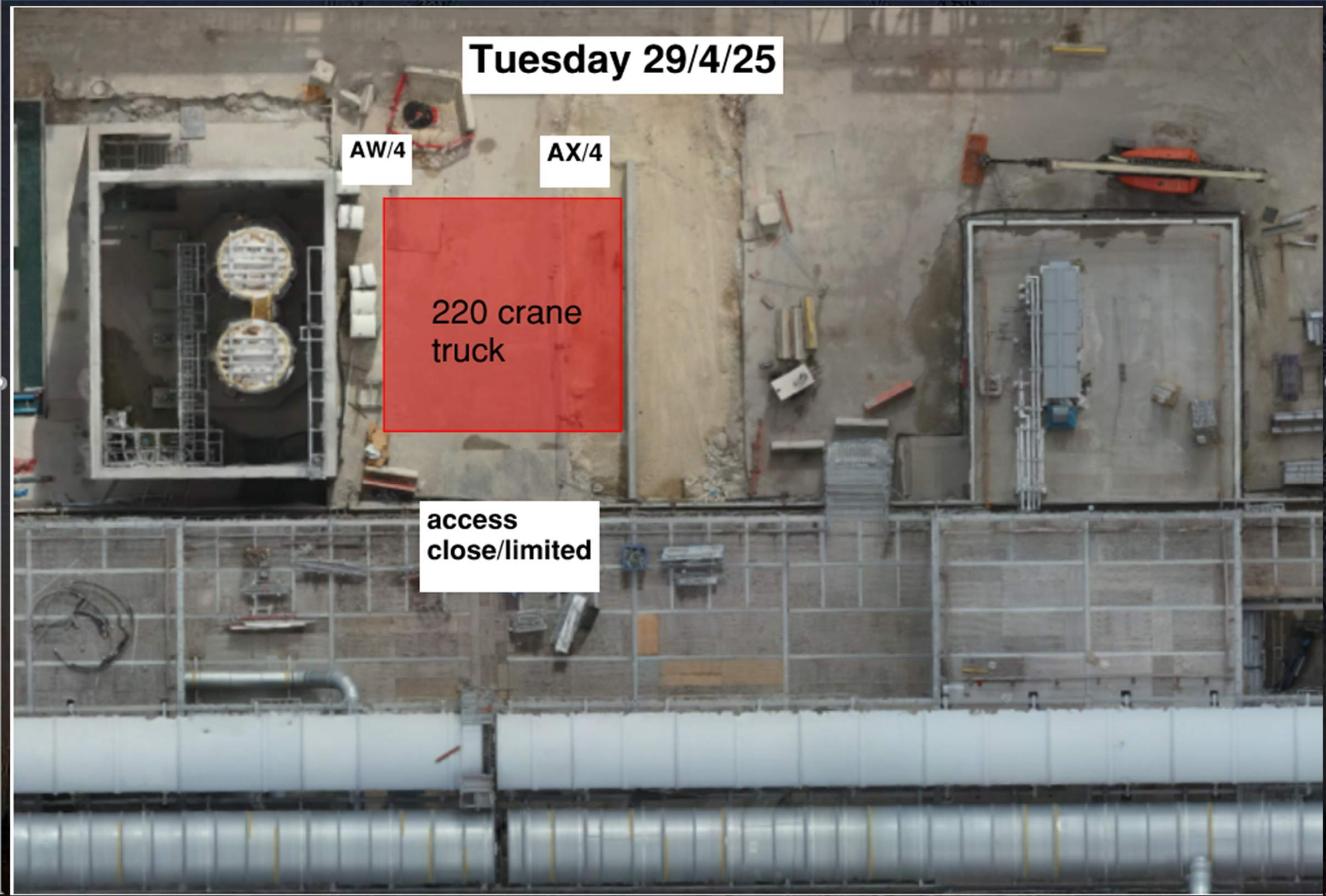
Tuesday 29/4/25

AW/4

AX/4

220 crane
truck

access
close/limited



MEWP INSPECTION READINESS

1. Make sure you are ready. All documents in order, repairs made or lifts removed from site. **DON'T CALL UNLESS YOU'RE READY!!**
2. Know where the lifts are. Have a list with locations.
3. Have control boxes on the lift ready to use.
4. Have approved operators and spotters to operate the lifts with the appropriate fall protection.

Daily Coordination Meeting



14:00 Sign In