

Daily Coordination Meeting



Daily Coordination Meeting

General Topics:

- None



UTILITY LEVEL PRESS TEST

LESICO

Press test UN2

3/26

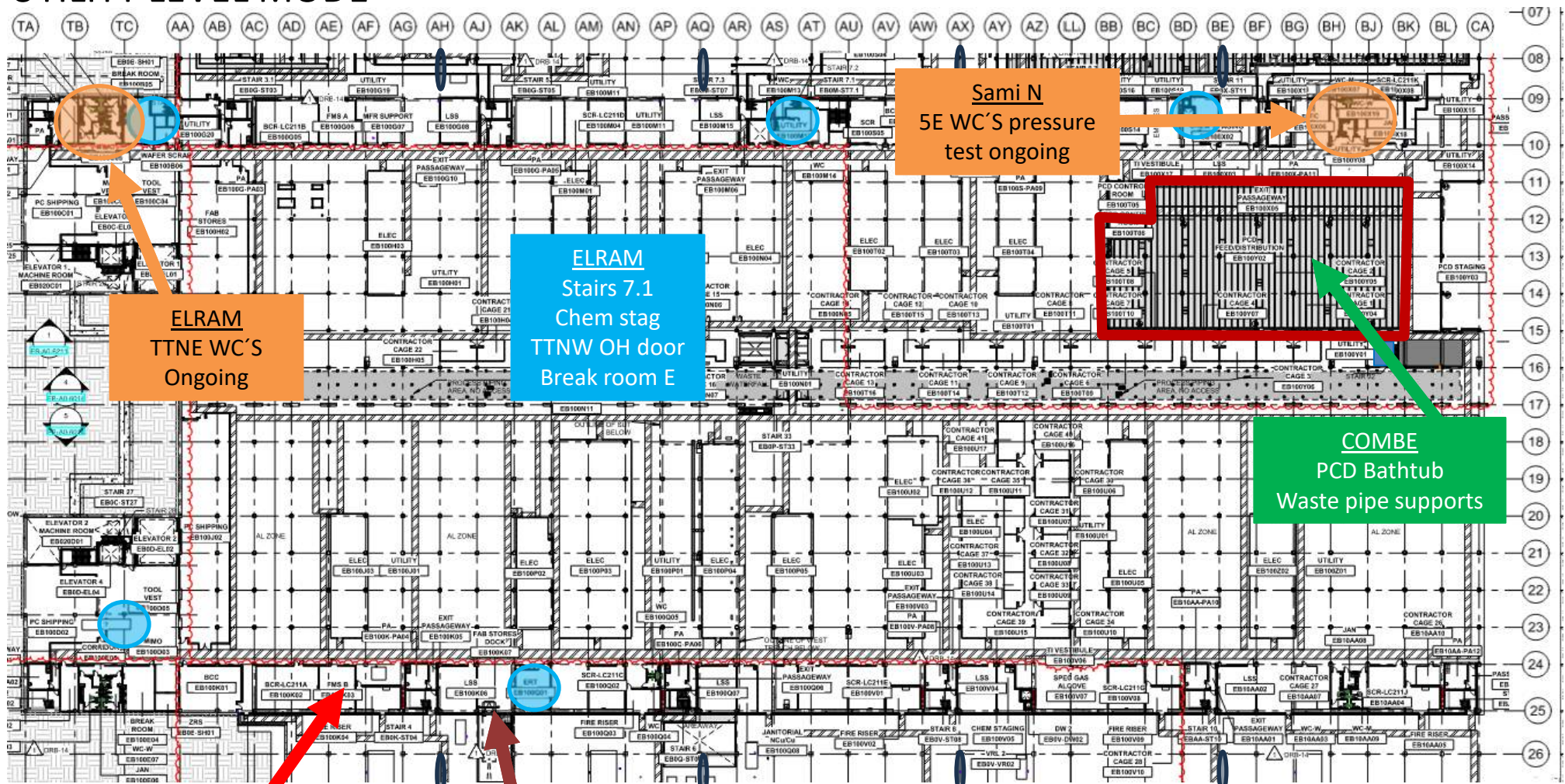
From 19:00

till 5:00

Safe exclusion zone for UN2 Pressure test
56.5-meter radius

CJ

UTILITY LEVEL MOD1



Sami N
5E WC'S pressure
test ongoing

ELRAM
TTNE WC'S
Ongoing

ELRAM
Stairs 7.1
Chem stag
TTNW OH door
Break room E

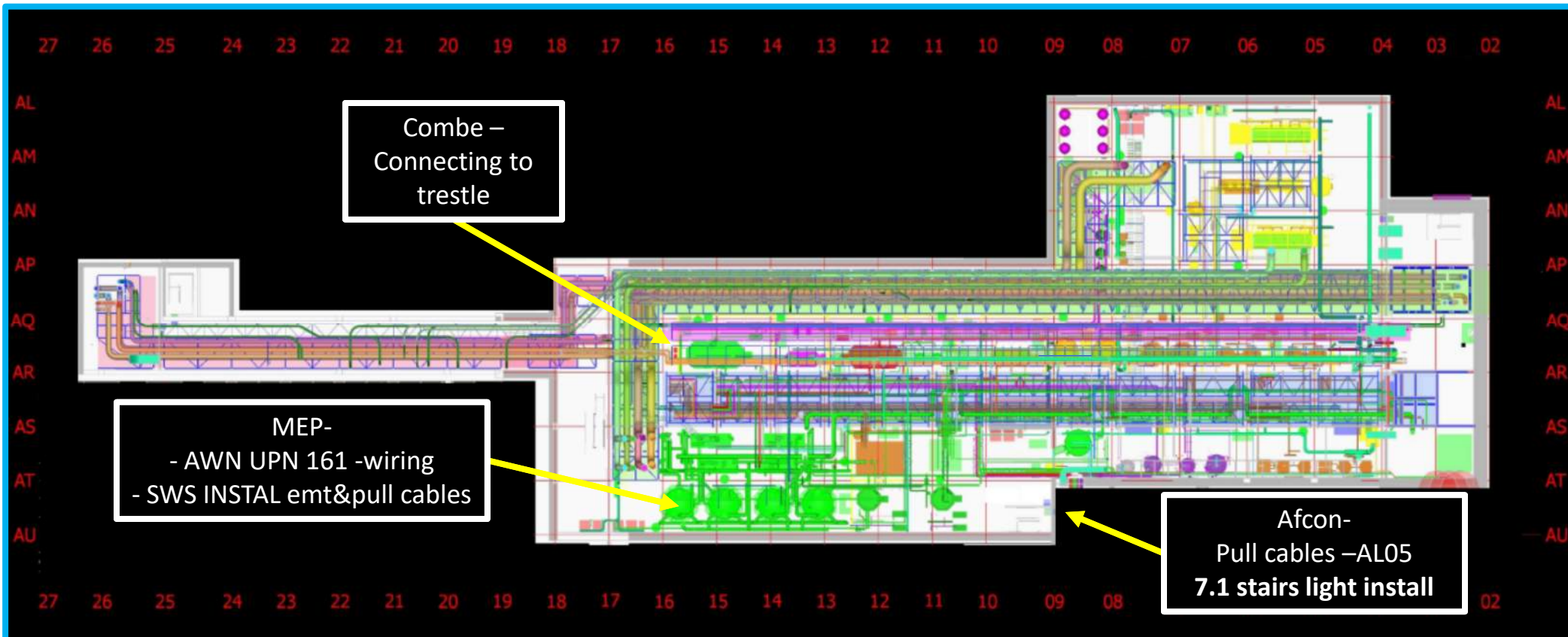
COMBE
PCD Bathtub
Waste pipe supports

Carmel Duct
Duct install back
3/26

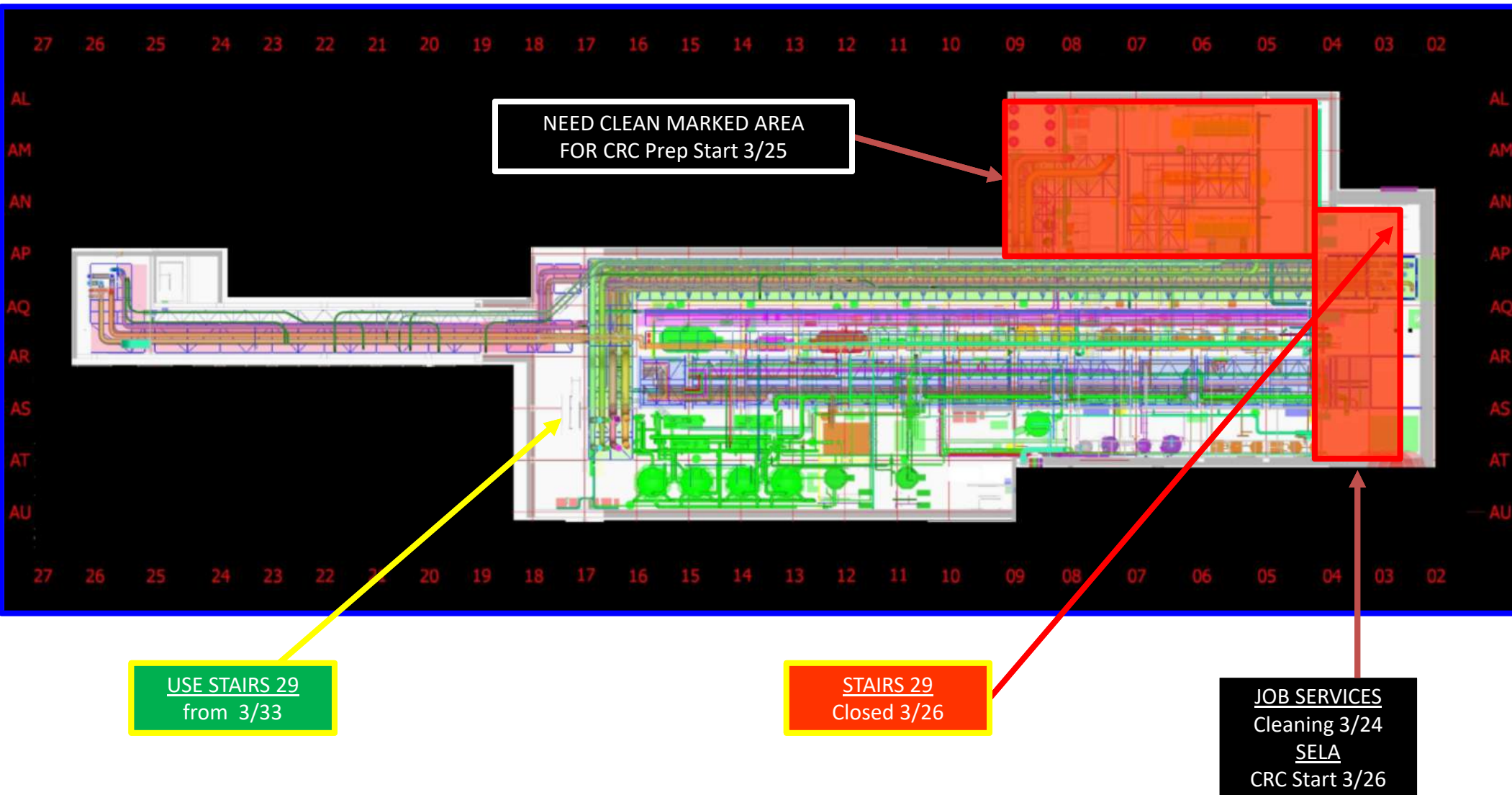
SHEARIM
Dock leveler & Roll-up door
install Start 3/26



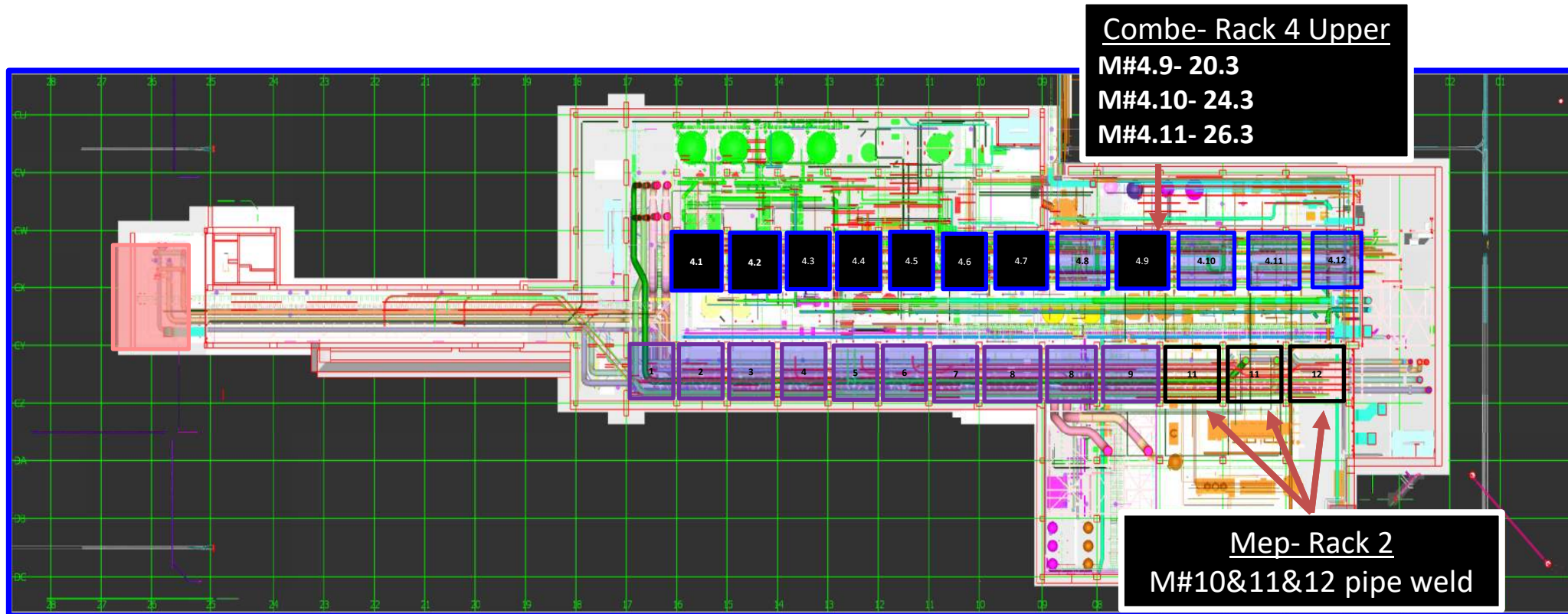
SUT 38.1 LEVEL



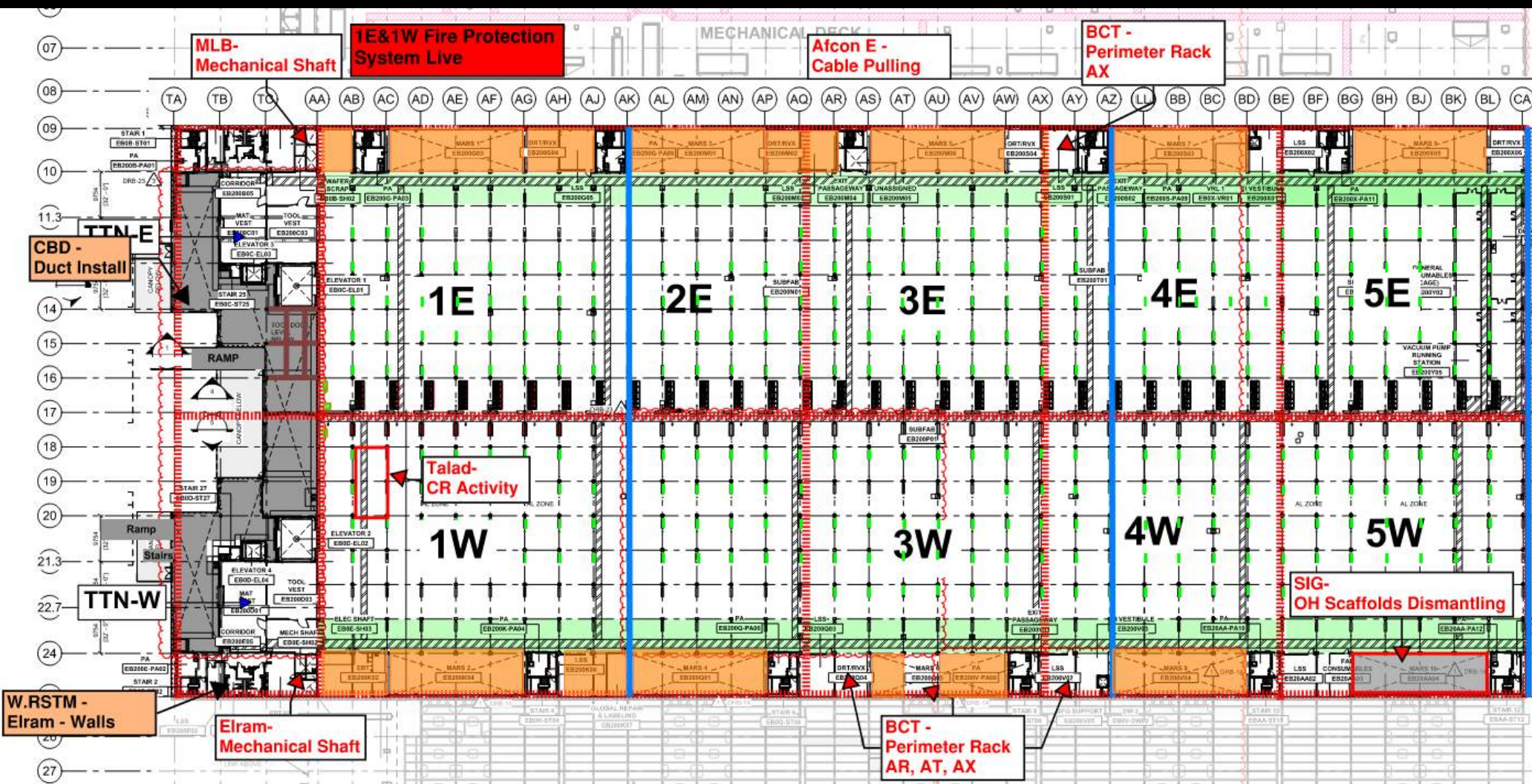
SUT 38.1 LEVEL



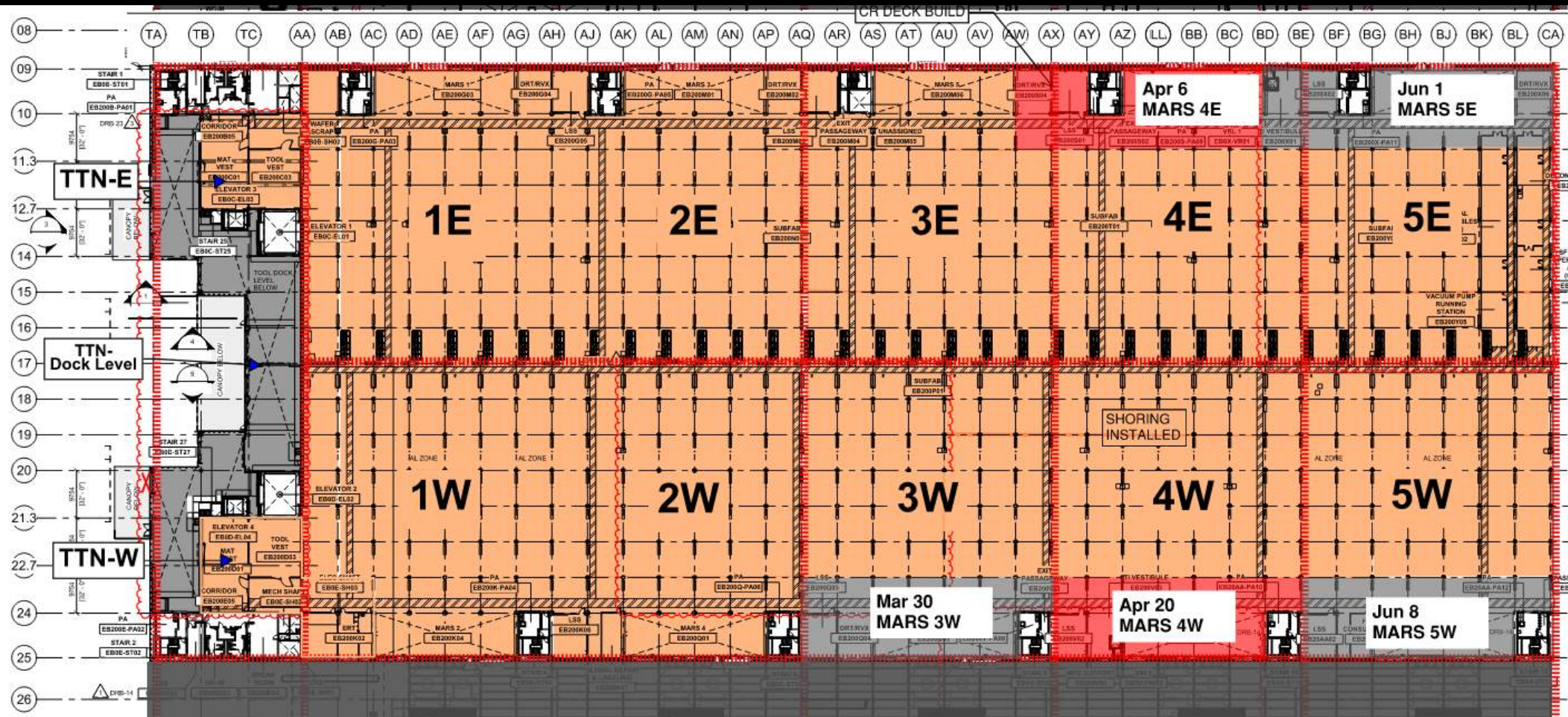
SUT 38.2 LEVEL



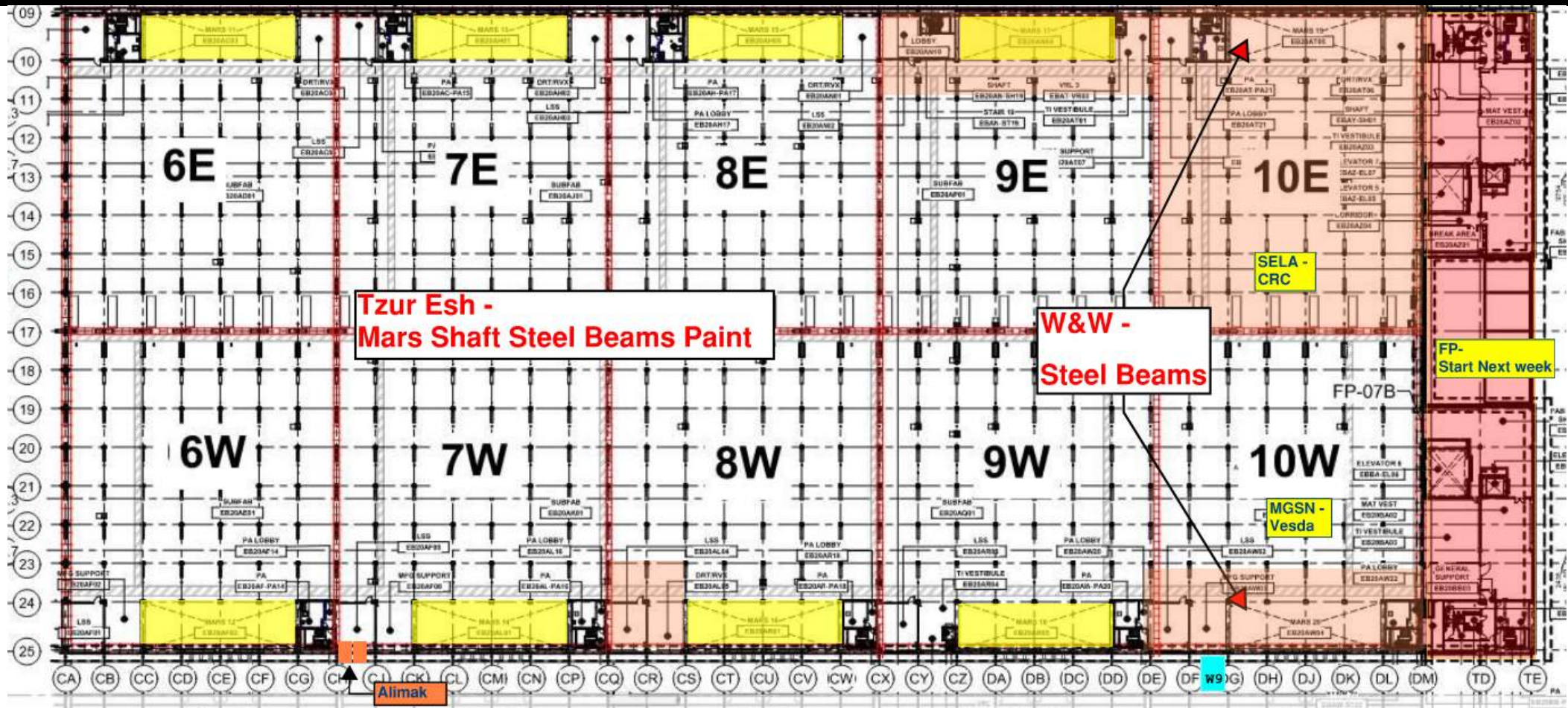
SUBFAB BUILDOUT MOD 1

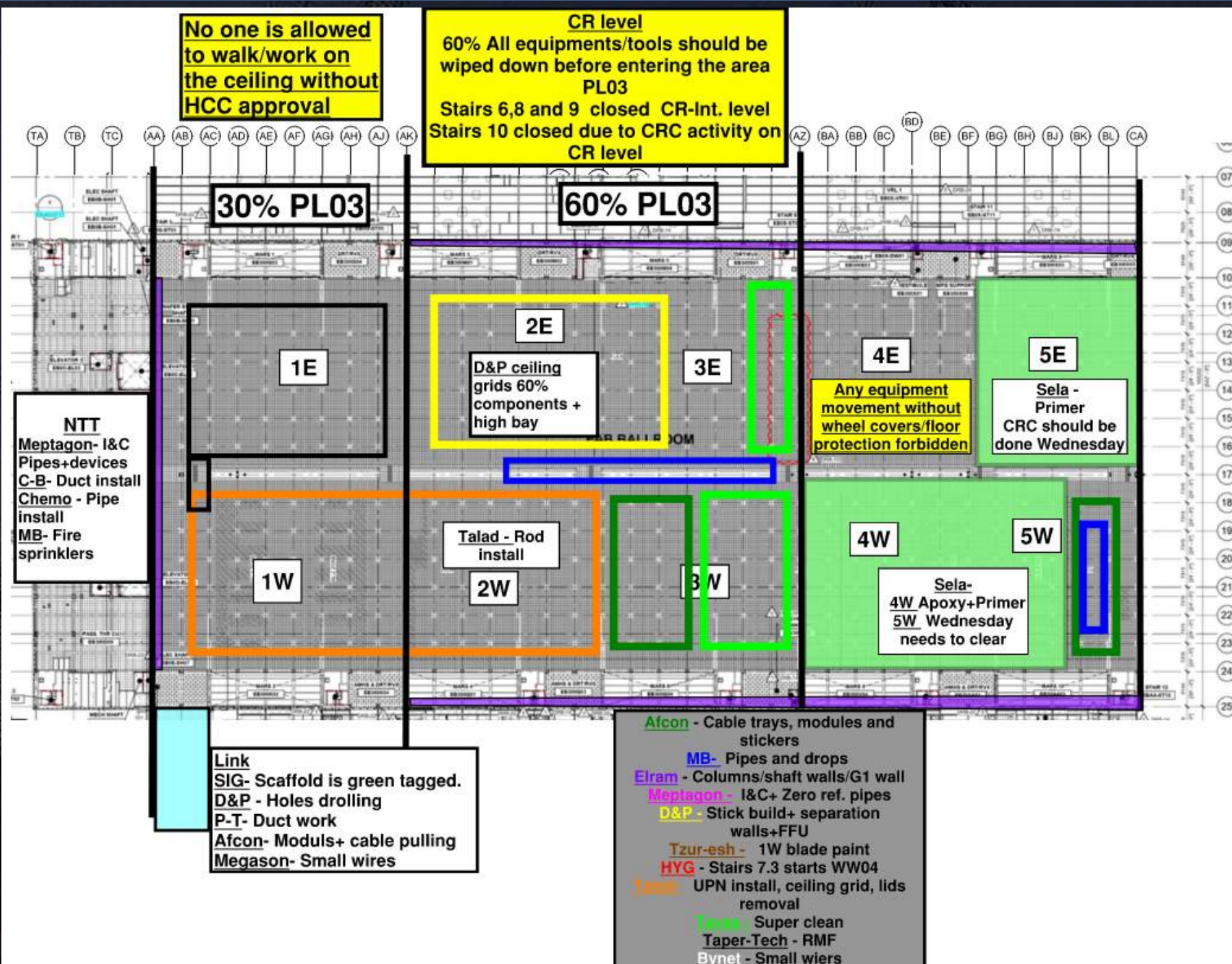


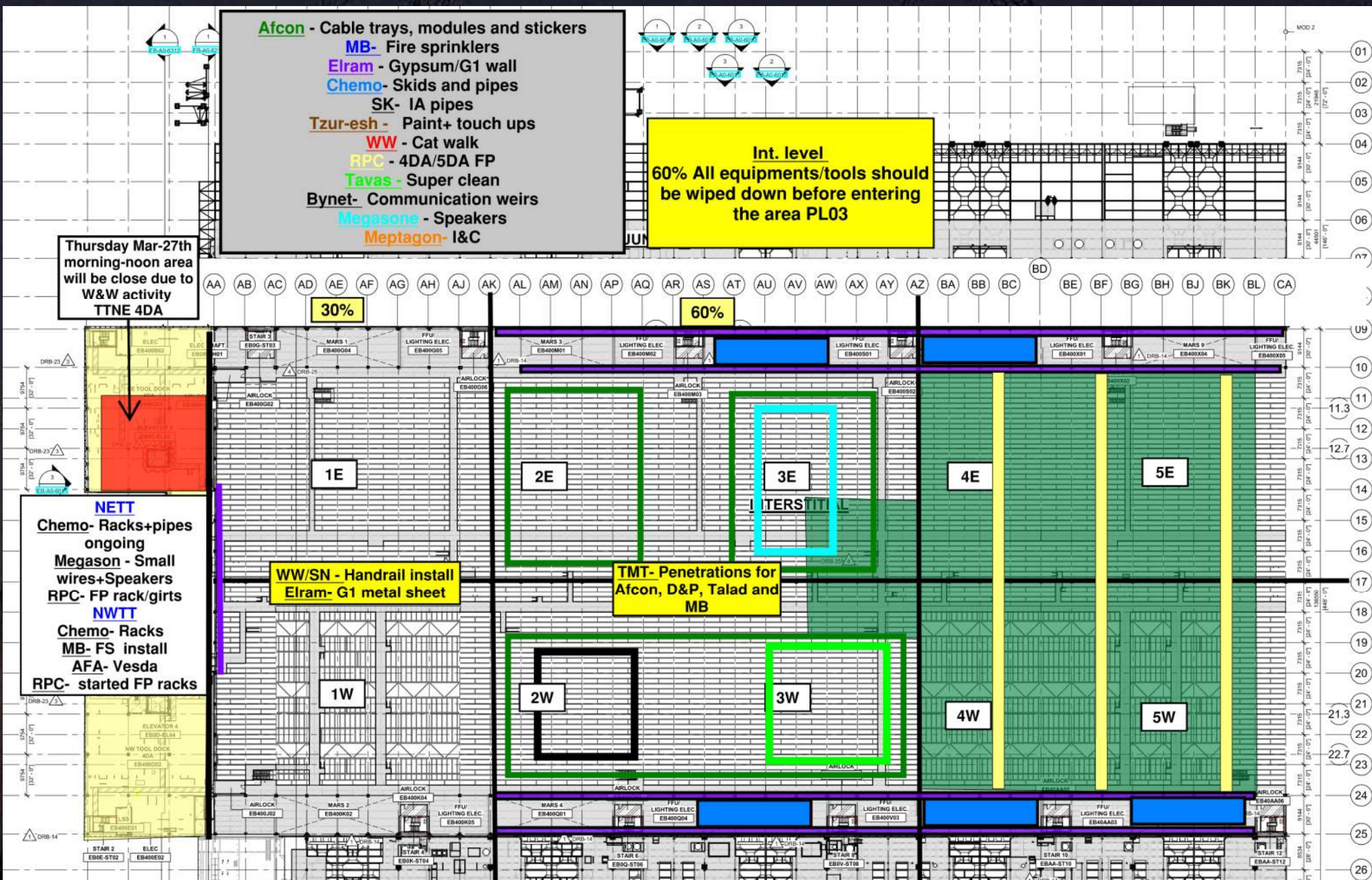
SUBFAB CRC TOPCOAT

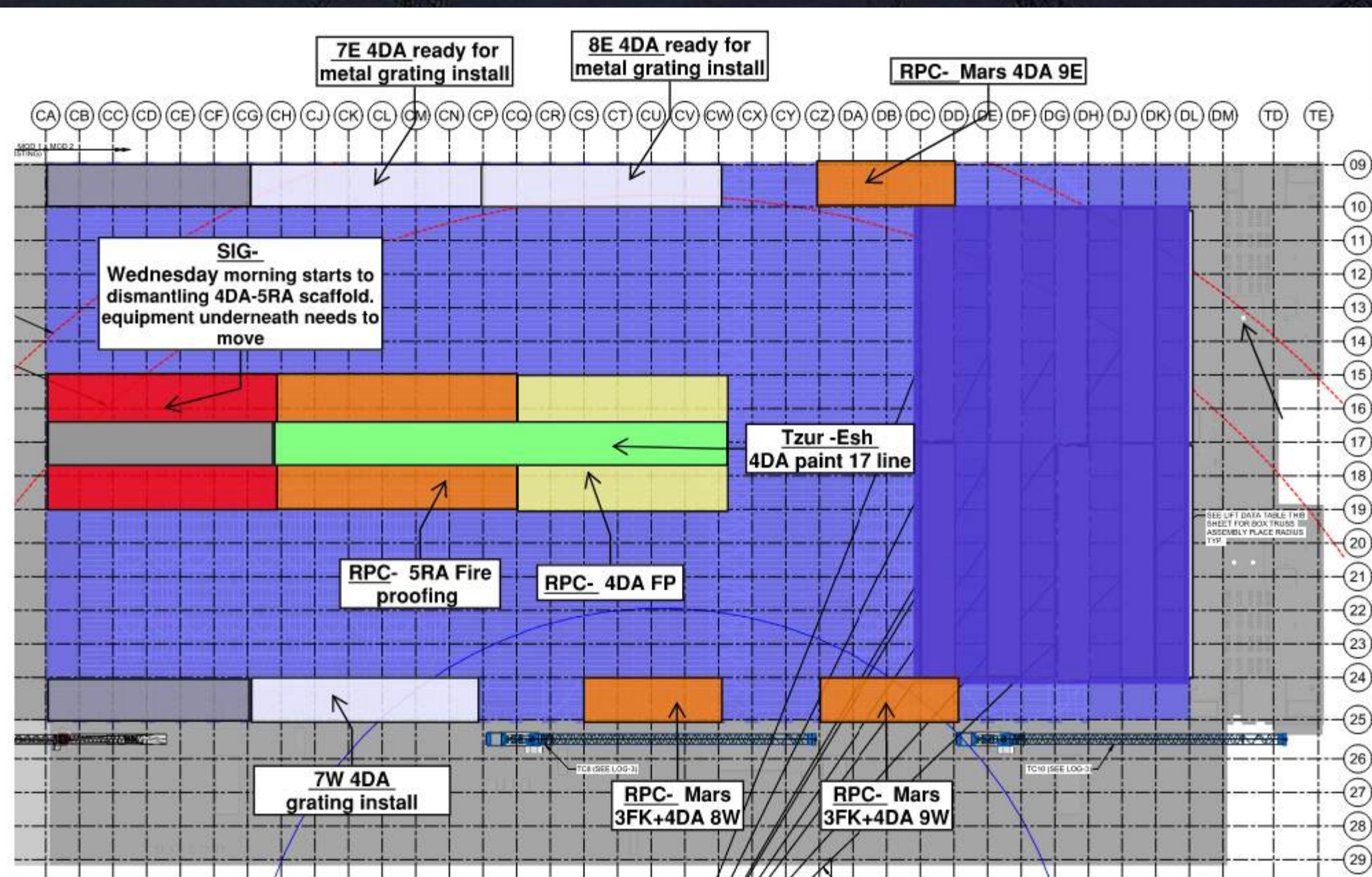


SUBFAB BUILDOUT MOD 2





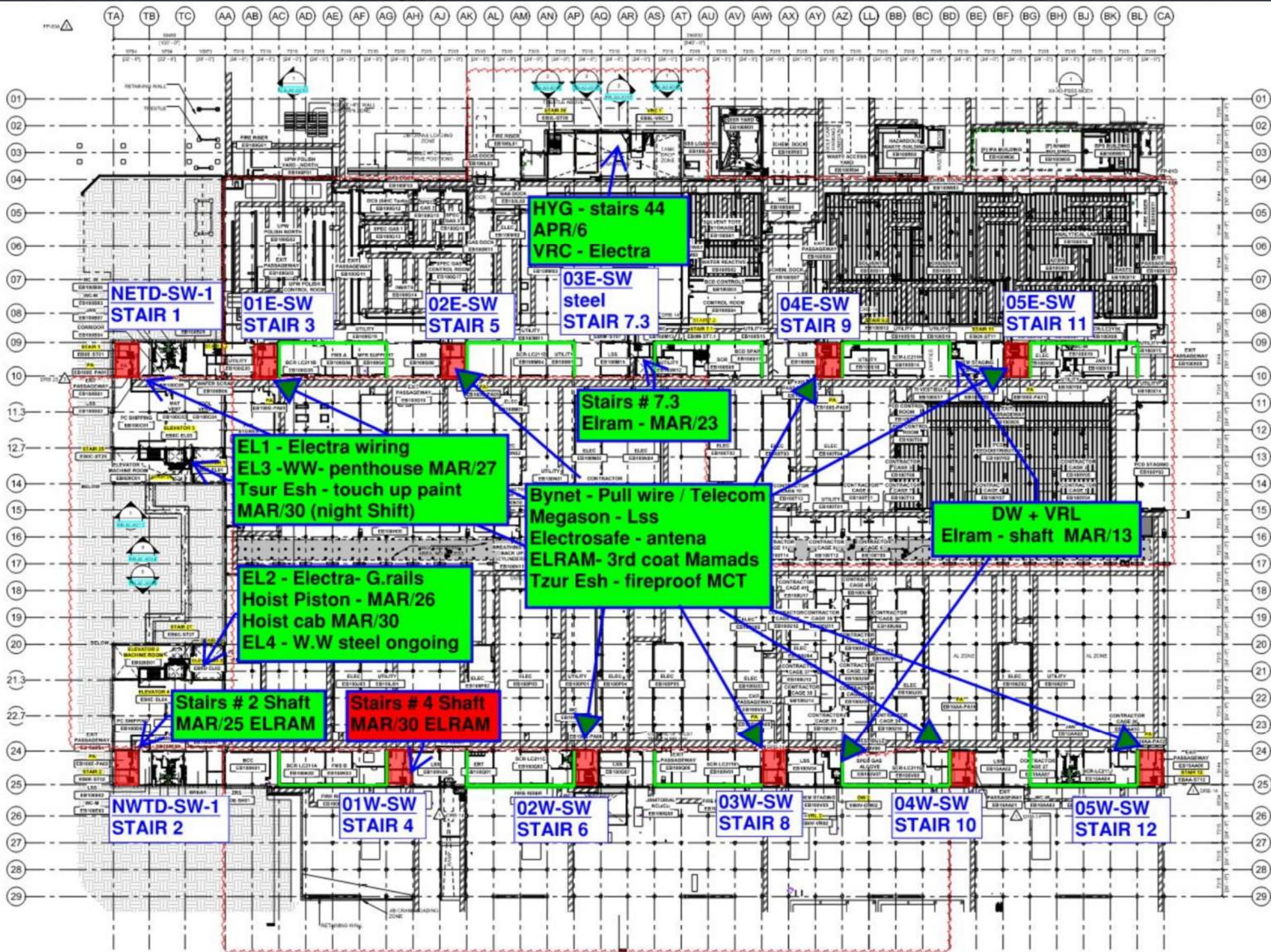




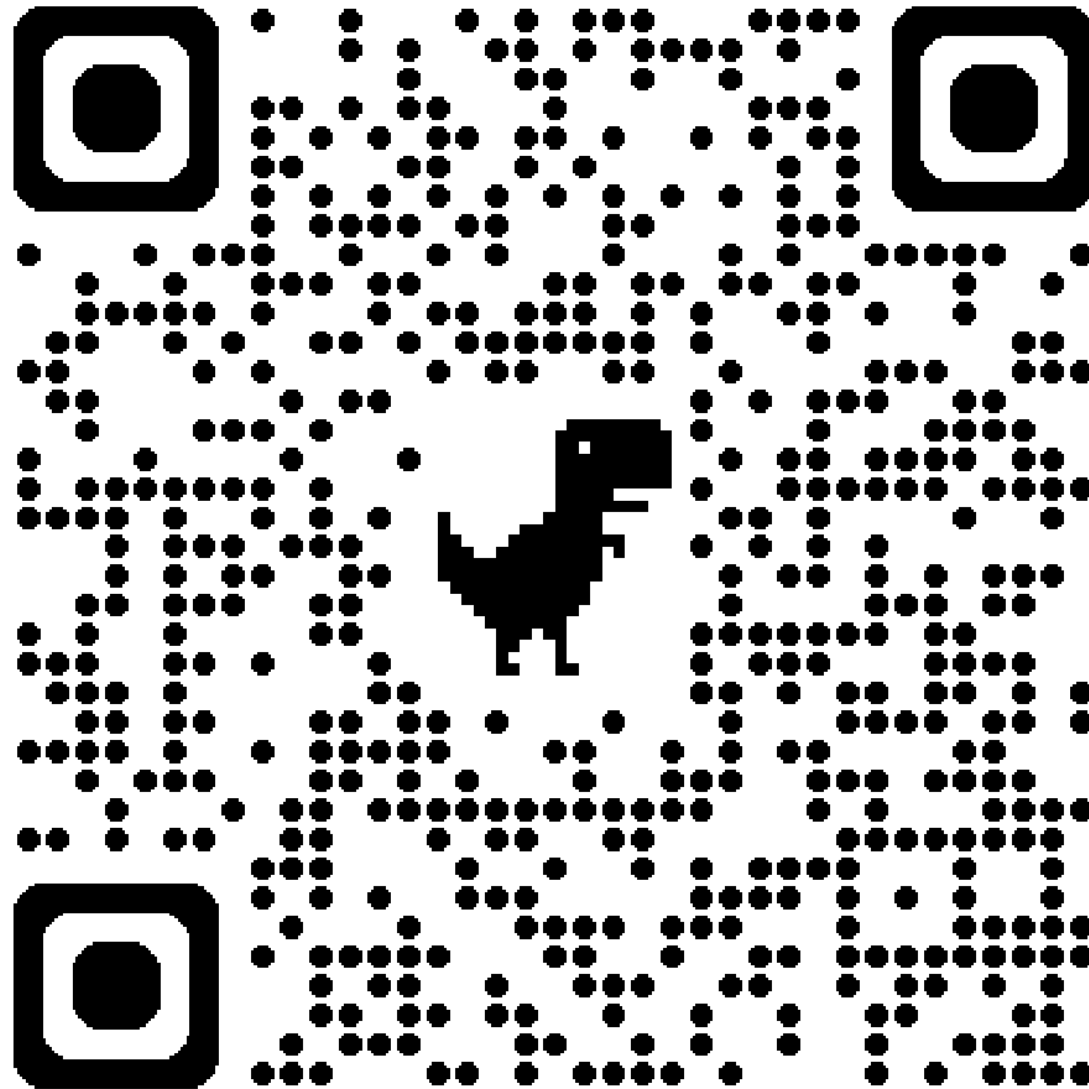


HOFFMAN CONSTRUCTION COMPANY

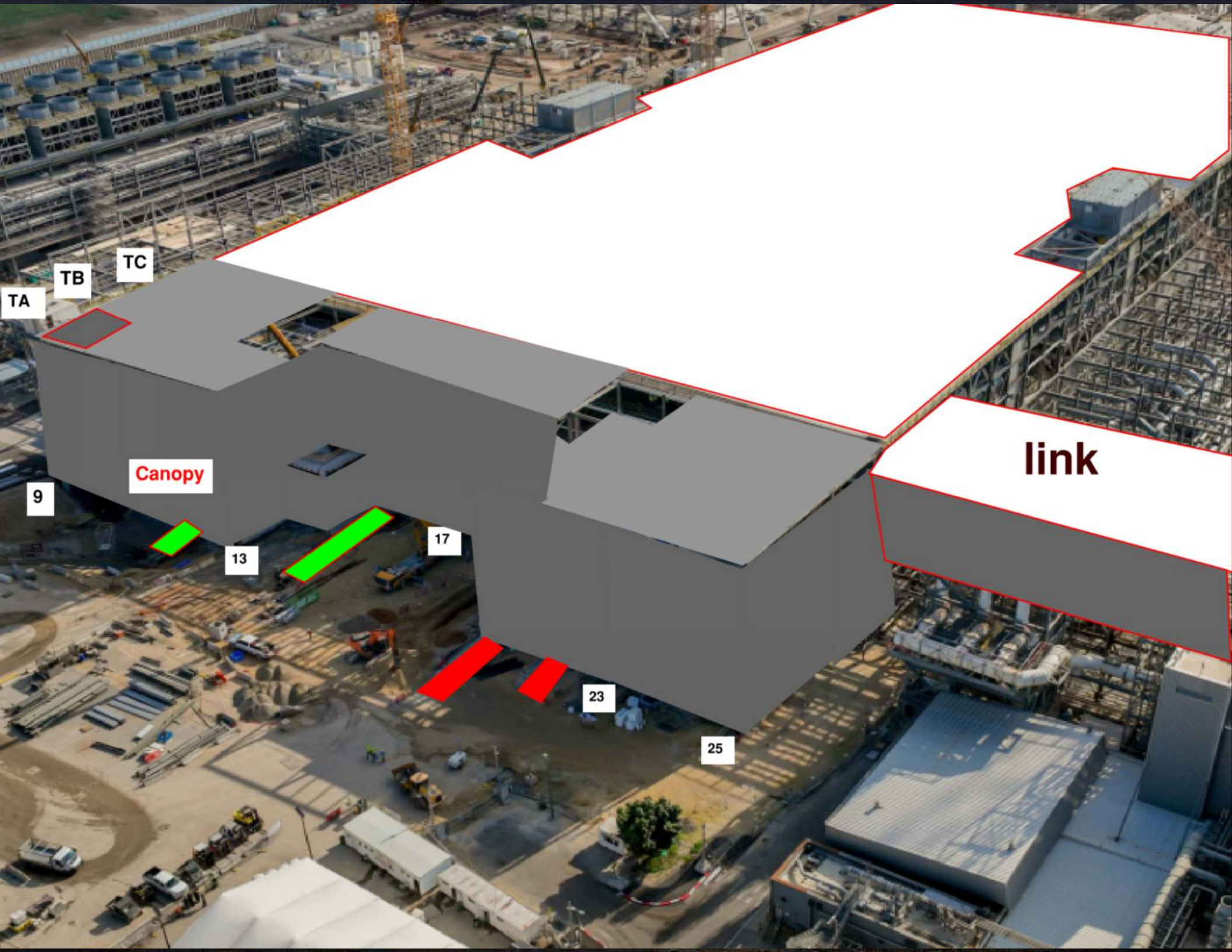




Siding Penetration Request Form



Subcontractor must fill out and submit all required cells in order to get a penetration cut through the siding.



TB

TC

TA

Canopy

9

13

17

23

25

link



CA

BL

BG

BC

AZ

AV

AS

AP

AK

AG

AC

Trestle

651

MOD 2 EASTSIDE GIRTS/SIDING



2752/ 2751	2742/ 2741	2732/ 2731	2722/ 2721	2712/ 2711	2552/ 2551	2542/ 2541	2532/ 2531	2522/ 2521	2512/ 2511	2502/ 2501
---------------	---------------	---------------	---------------	---------------	---------------	---------------	---------------	---------------	---------------	---------------

READY FOR GIRTS	
INSTALLING GIRTS	
READY FOR PANELS	
PANELS INSTALLED	



READY FOR GIRTS 

INSTALLING GIRTS 

READY FOR PANELS 

PANELS INSTALLED 

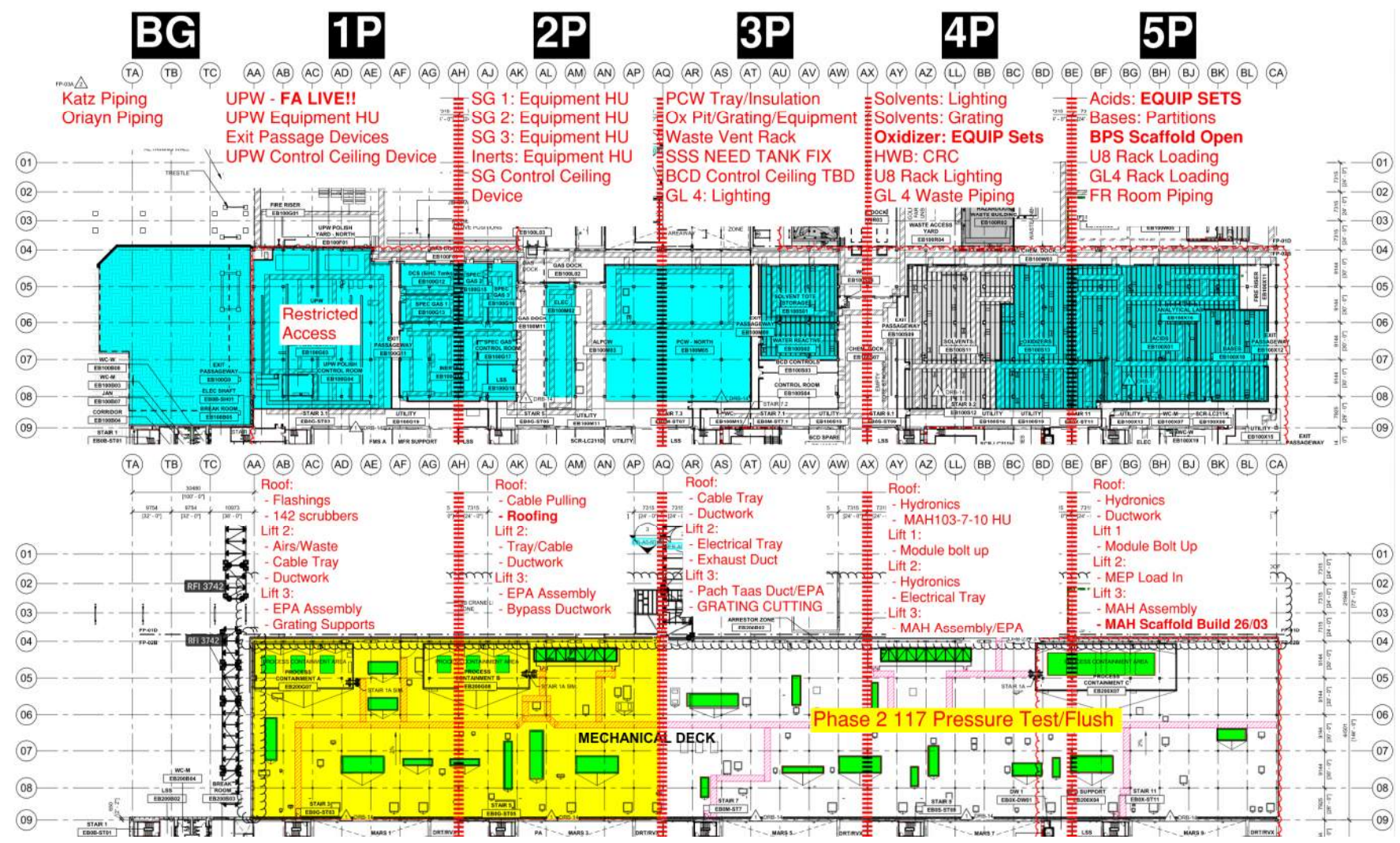
MOD 2 WESTSIDE GIRTS/SIDING



PSSS.1

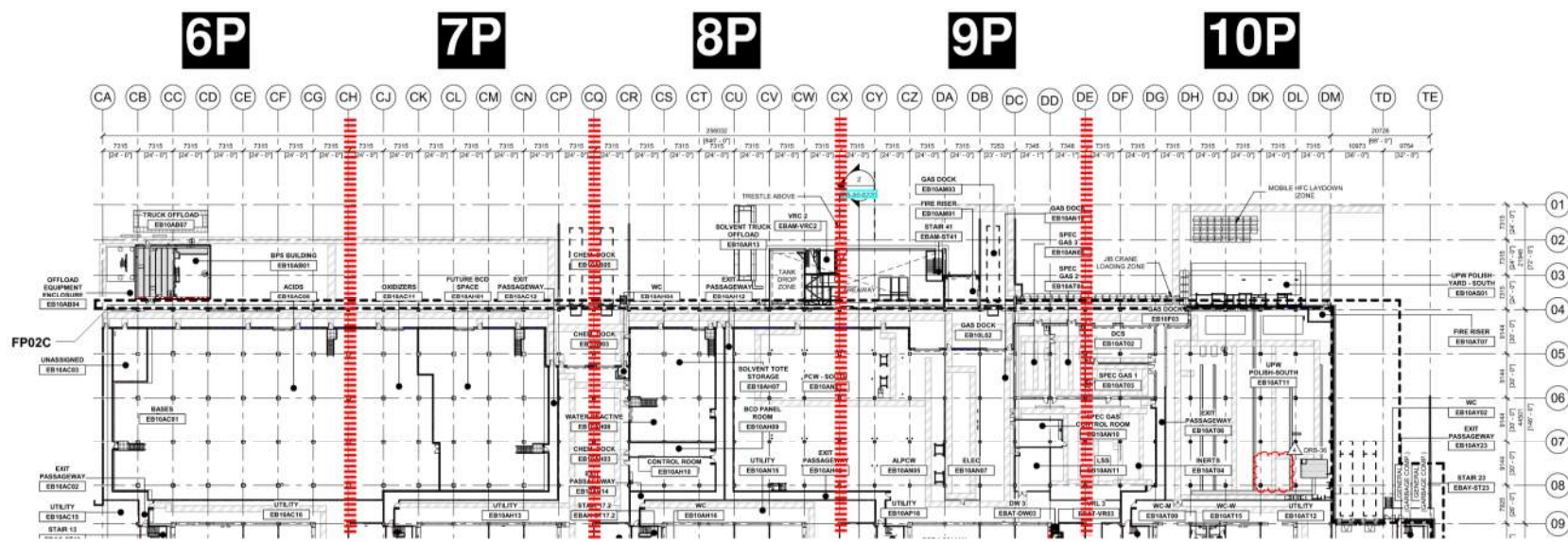
Utility Level
1YA

PSSS Roof
2SA

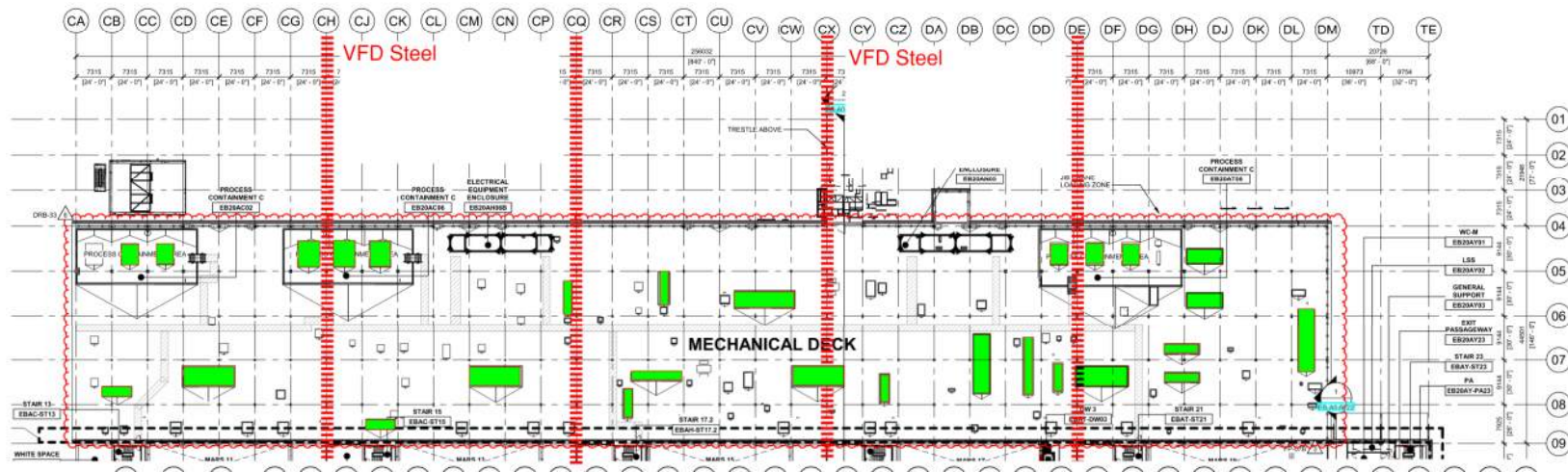


PSSS.2

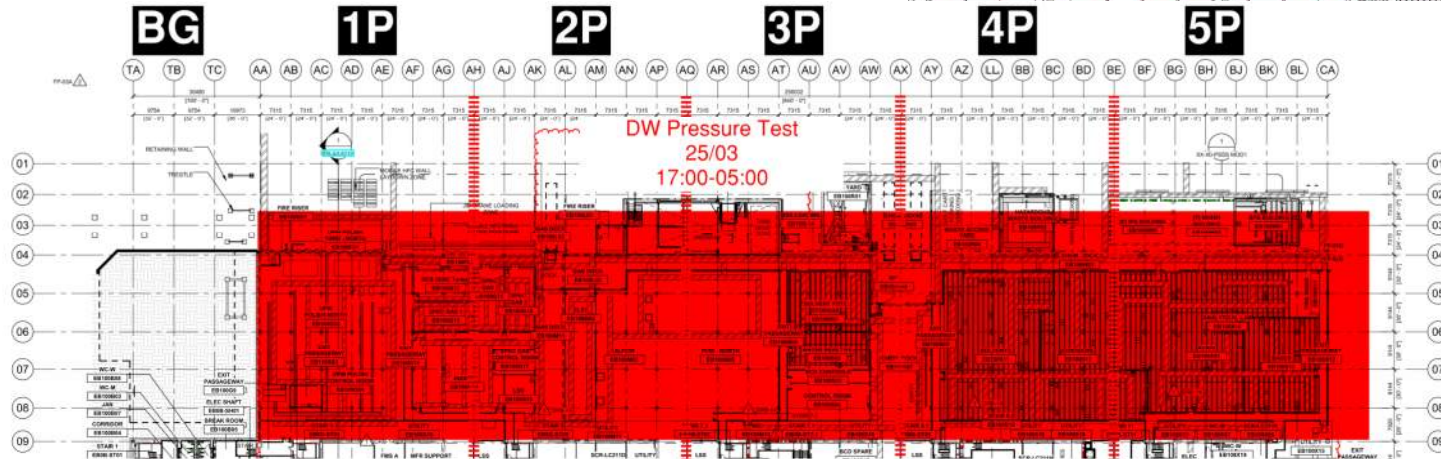
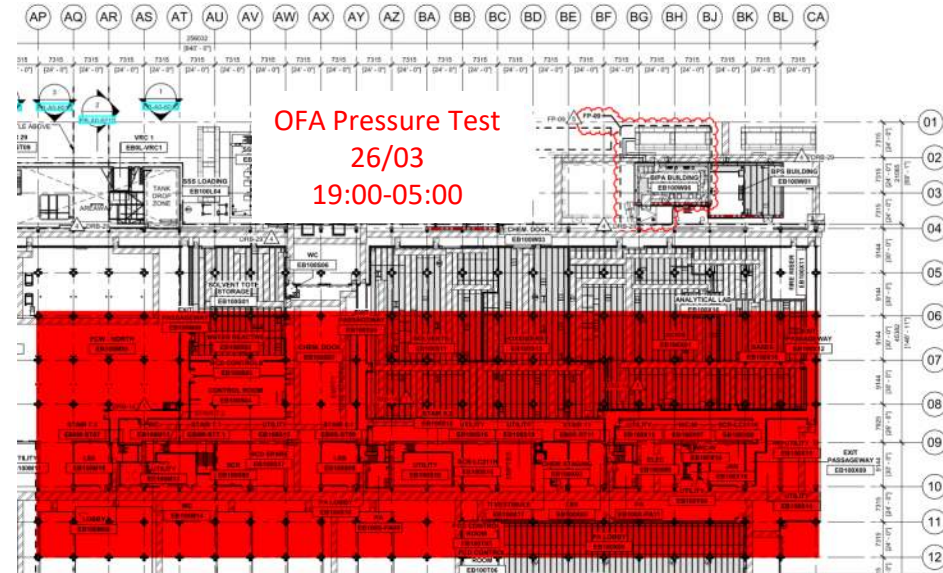
Utility Level
1YA



PSSS Roof
2SA

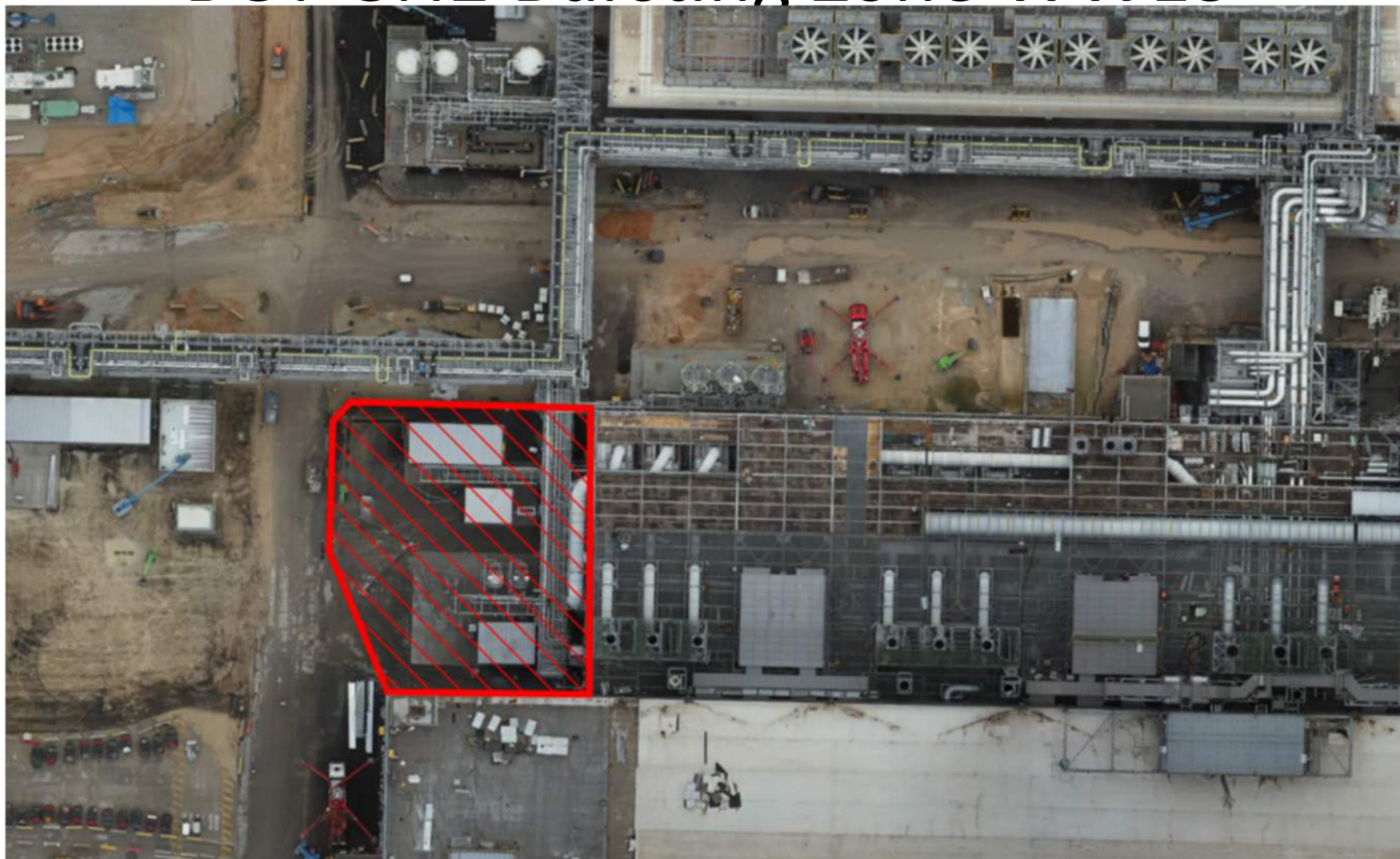


PSSS Pressure Testing



Utility Level
1YA

BGY GN2 Bursting Zone WW13

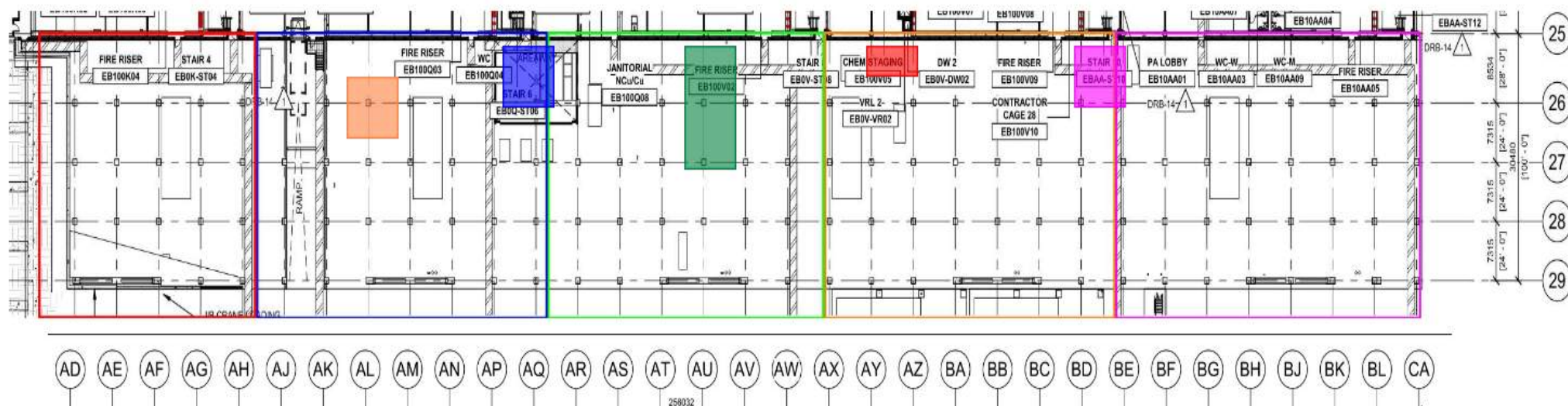


WJG – UL

*Pach Taas - installation of modules in west SUT.
 * Pach Taas - completion of spools and lindapters on UPN 138

*Afcon - Installation of lighting and cable pulling

* Carmel Bidud - installation of air ducts
 * Afcon - cacbe pulling from roof to VFD and UL

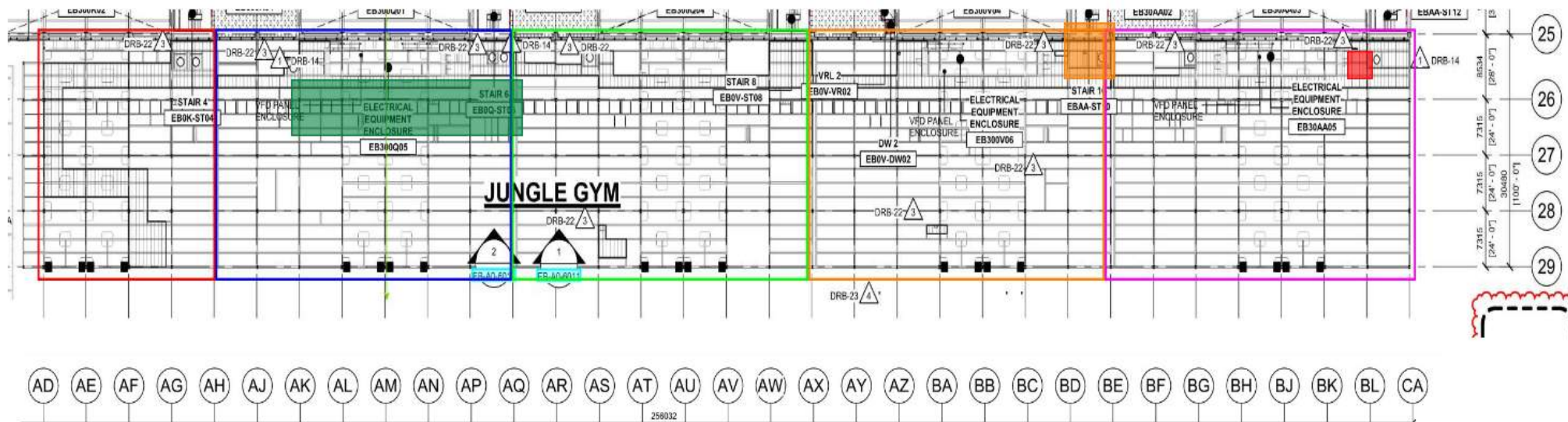


WJG – Lift 2

*Carmel bidud/Taper-tech -
building handrail and dismantling
of planking for stiffeners

* Afcon - pulling cables to VFD and
pulling cables to UL

* Chemo - continuing insulation



9

* Pach Taas - working on installation of horizontal ducts

* SN -cutting grating penetrations and installing handrails



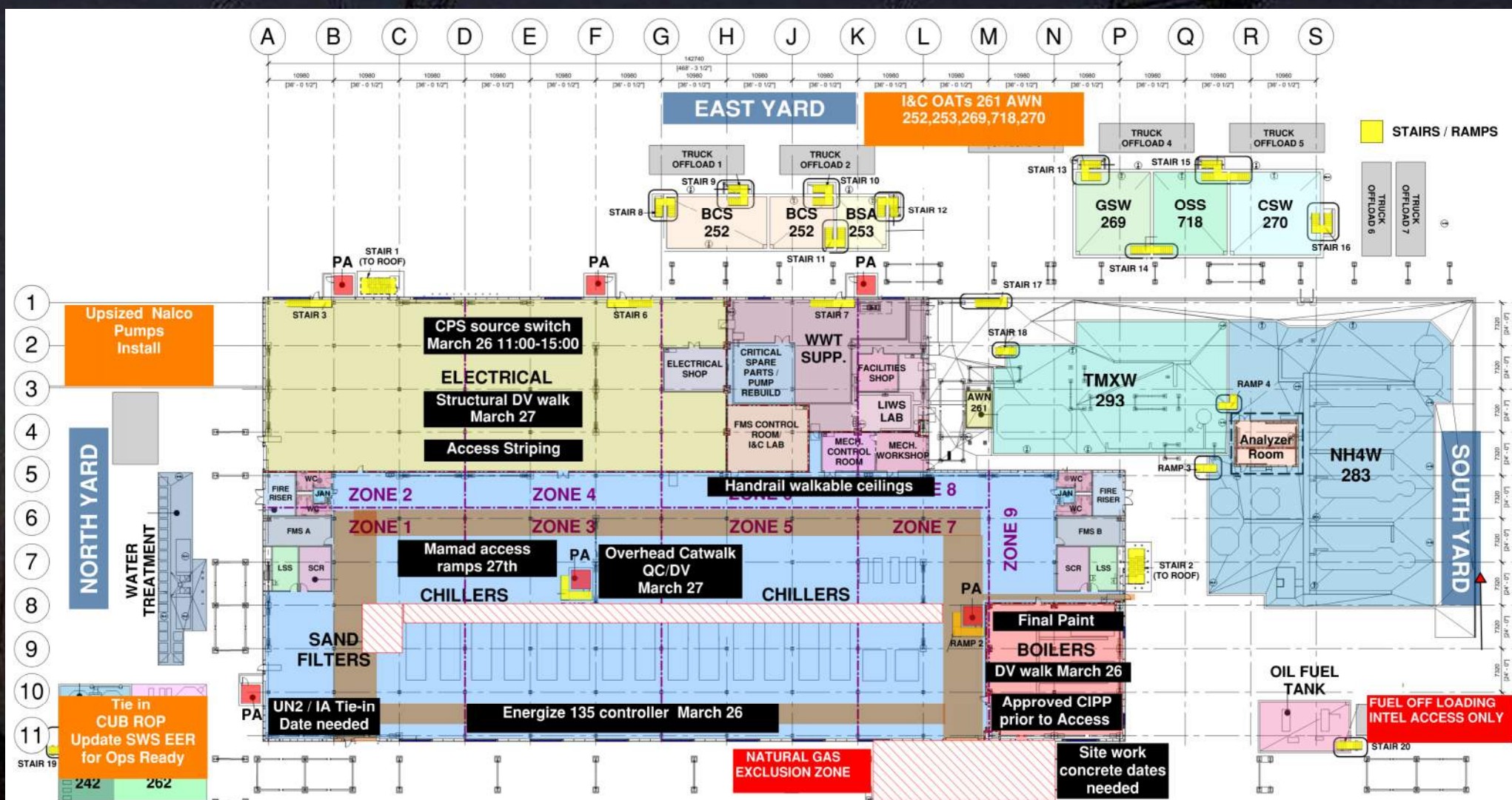


CUB 1 7 working days to room ready

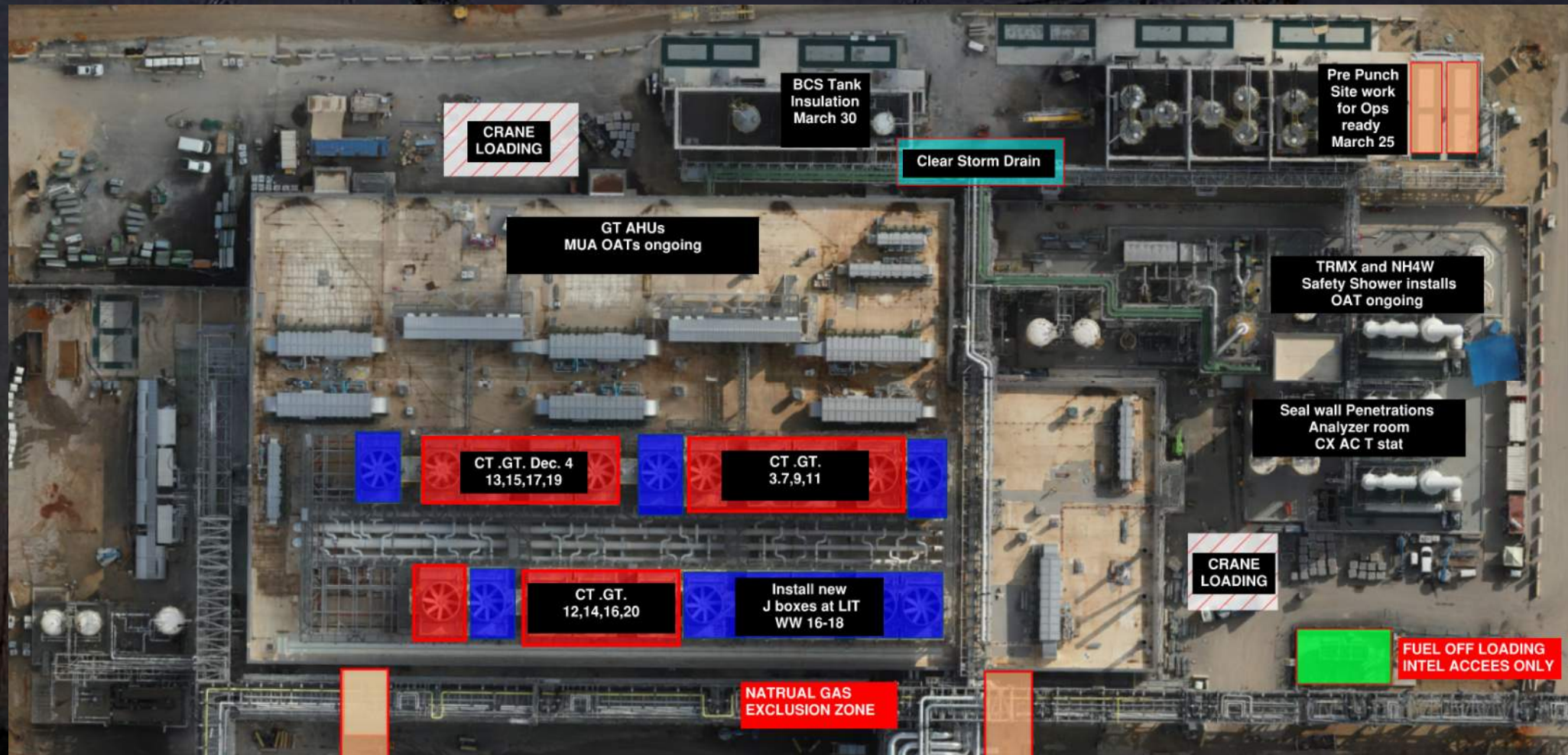




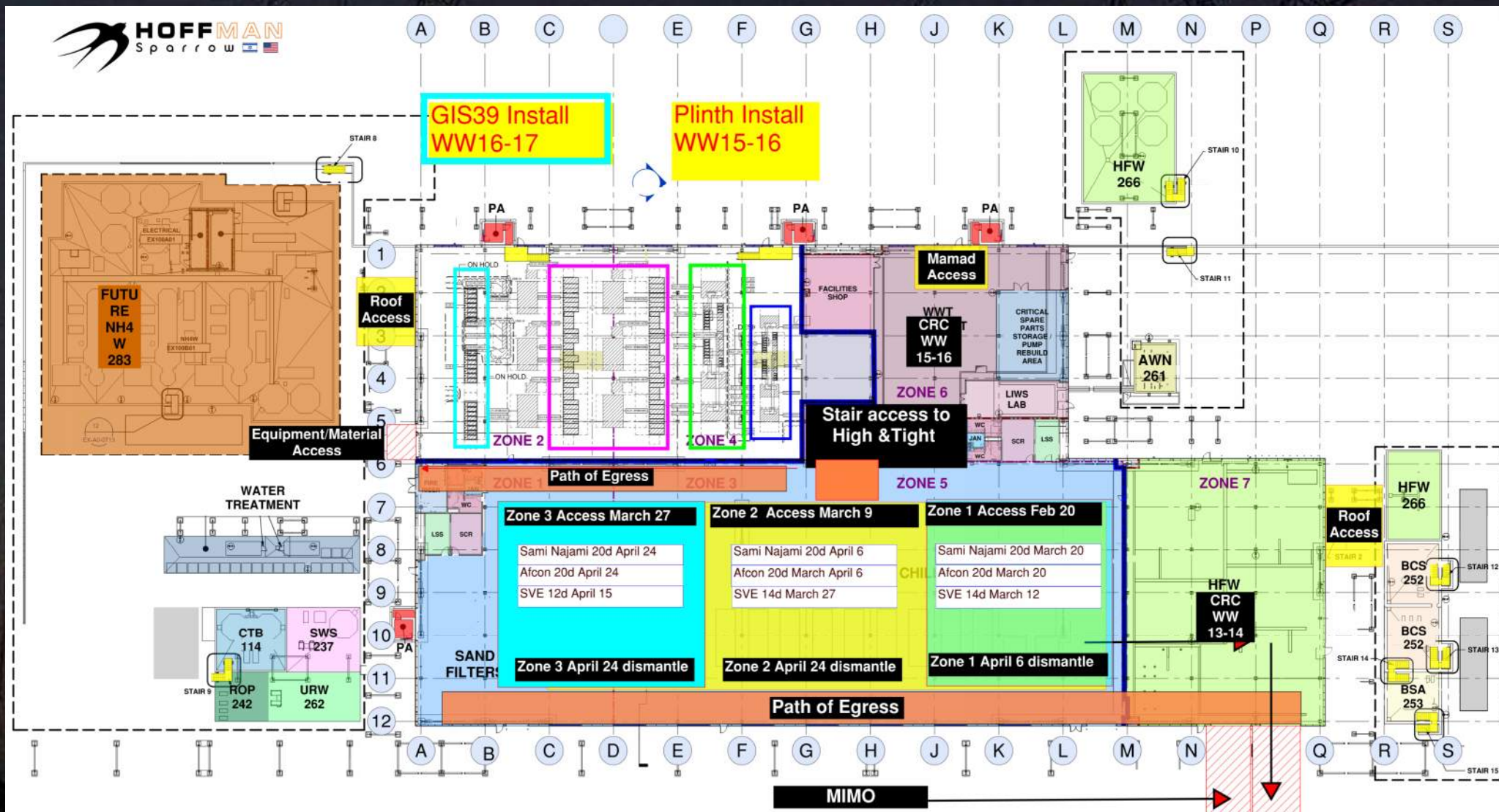
CUB 1



CUB 1 – EXTERIOR/ROOF



CUB 2- Load in & H&T



CUB 2 – EXTERIOR/ROOF







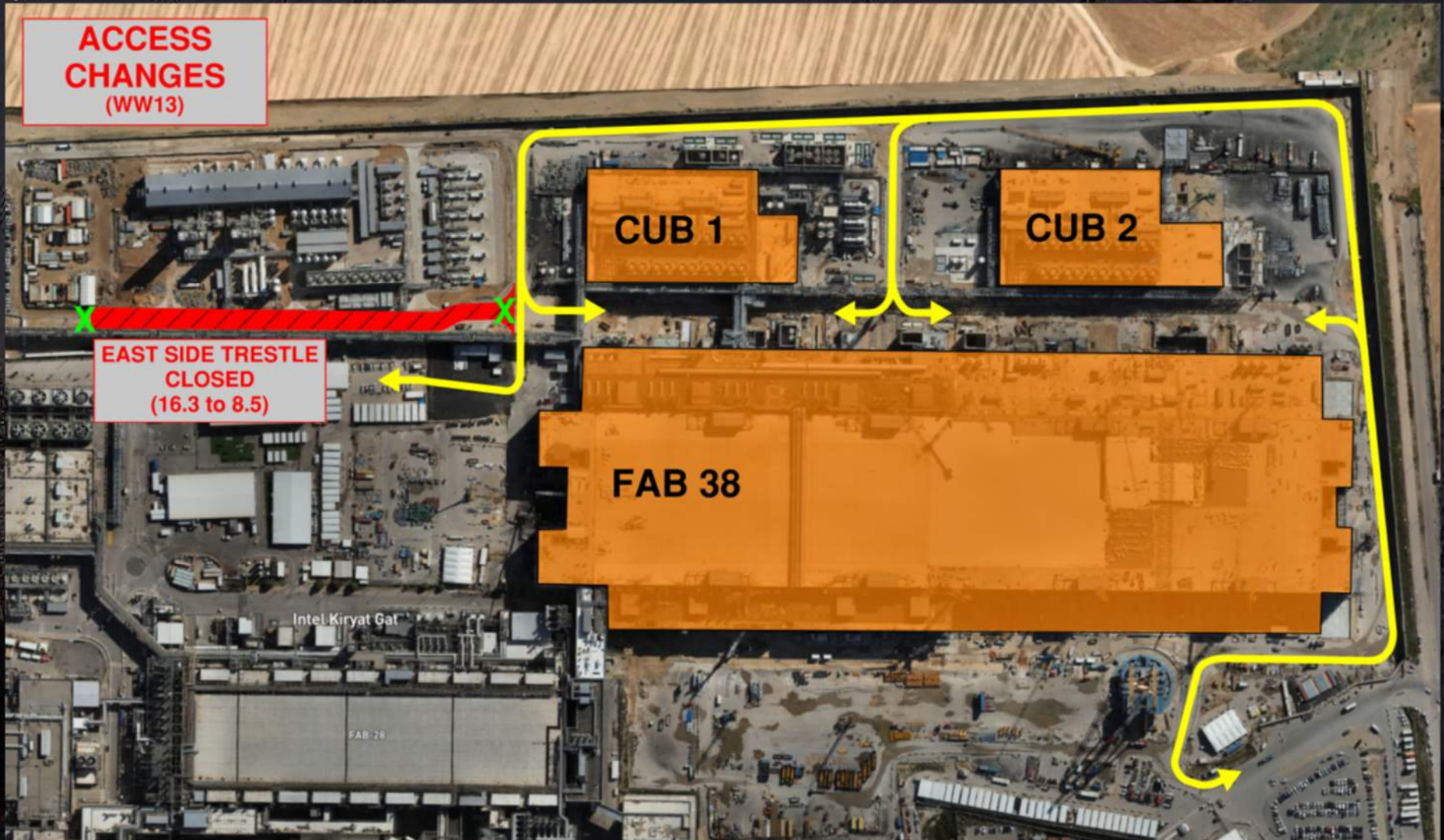
HOFFMAN CONSTRUCTION COMPANY



Daily Coordination Meeting

Site Logistics

North



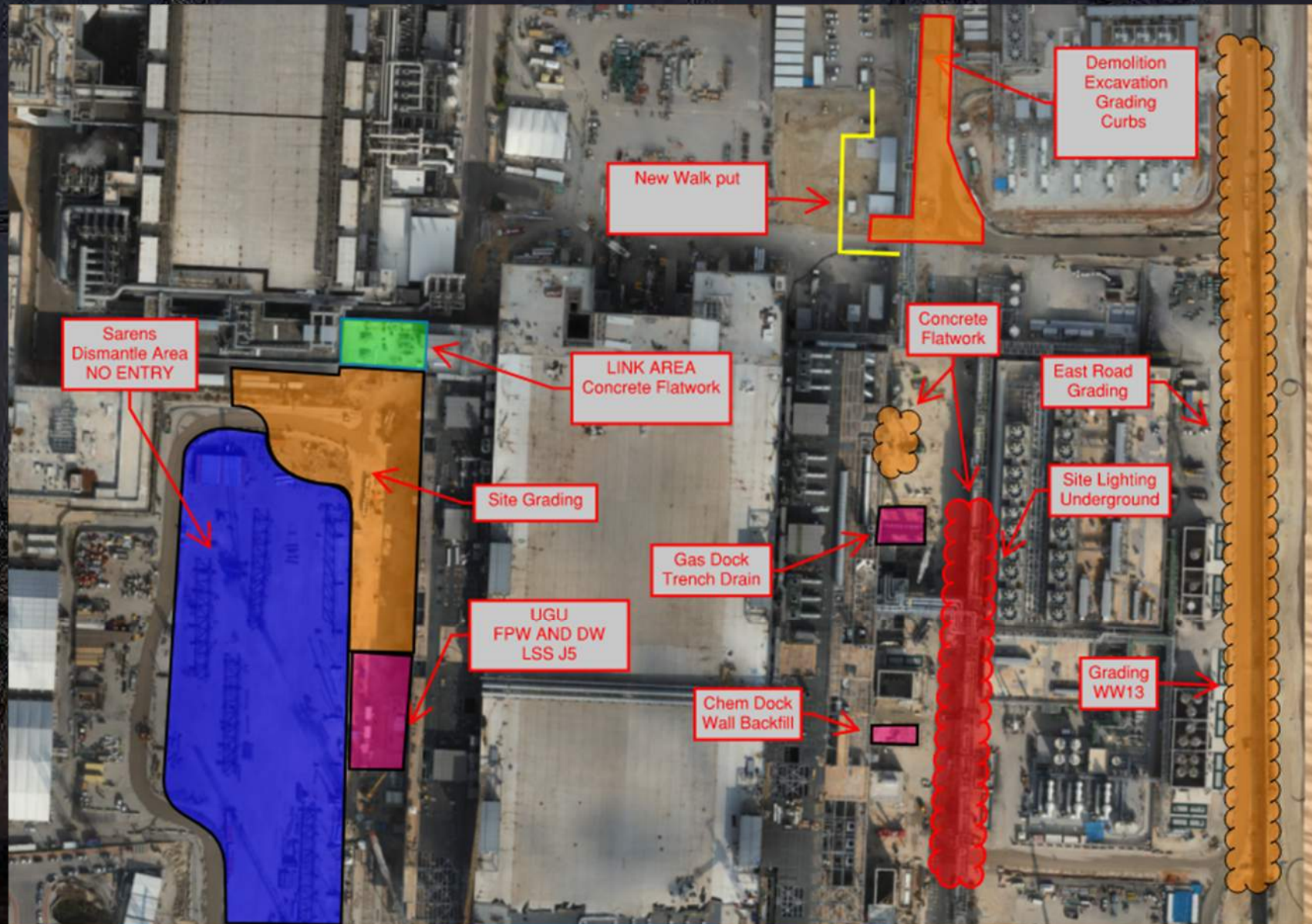


HOFFMAN CONSTRUCTION COMPANY



Daily Coordination Meeting

Site Logistics
North





HOFFMAN CONSTRUCTION COMPANY



Daily Coordination Meeting

Site Logistics

South





HOFFMAN CONSTRUCTION COMPANY



Daily Coordination Meeting

MAMAD Locations

MAMAD LOCATIONS (19-March-2025)

■ LARGE
■ SMALL
■ BUILDING



HCC Crane Department

Avi Cranes on site in the month of April

750 ton - West Jungle Gym - Leaving end of the month
LR1250 - South Tool Tower
AC220 - North Tool Tower
RT120 - All site - Leaving end of the month
RT120 - All site
RT100 - All site
Truck Crane 265 Ton - All site
Truck Crane 150 Ton - All site
Truck Crane 150 Ton - All site - Leaving end of the month

Avi Cranes on site in the month of May

LR1250 - South Tool Towers
AC220 - North Tool Towers
RT120 - All site
Truck Crane 265 Ton - All site
Truck Crane 150 Ton - All site - Leaving May 20th

Procedures for requesting crane time Starting April 1st.

1. We will not be using the truck crane request smart sheet anymore, all cranes will be on the normal schedule published every morning.
2. All crane requests including truck cranes need to be done after the 14:00 meeting. NO EXCEPTIONS. We will not be able to accommodate last minute requests or phone call requests for day before scheduling.
3. When requesting truck cranes the contractors need to have the same information that we ask for on the smart sheet as far as radius, weight and area needed. If the person does not know that information then we will not schedule it.
4. When the schedule is published in the mornings, if there are open times on cranes that is the only time we will take phone call requests to fill in the spots and it will be a first come first serve basis.



Stop the Drop

We are continuing to see a high number of dropped objects on this project.

Remember, tools and material must be secured at heights. This can be with containers, tethers, netting, etc. But cannot be ignored.

Tools must be inspected before use, if something is loose, it shouldn't be used.

Barricades are our last line of defense, not first. Just because a barricade is in place does not mean it is okay or acceptable to have something unsecured at heights.

All of you need to be checking on your work areas and ensuring that your crews are doing everything that they can to **STOP THE DROP** of tools, material, equipment, etc.

Daily Coordination Meeting



14:00 Sign In