

# Daily Coordination Meeting



14:00 Sign In

# Daily Coordination Meeting

**General Topics:**

**Learn from everything – share examples**



Gas dock MOD1  
retaining wall fig  
5:00 am

Apron sidewalk  
6:00 am

CUB1 stair pad ext.  
6:30 am

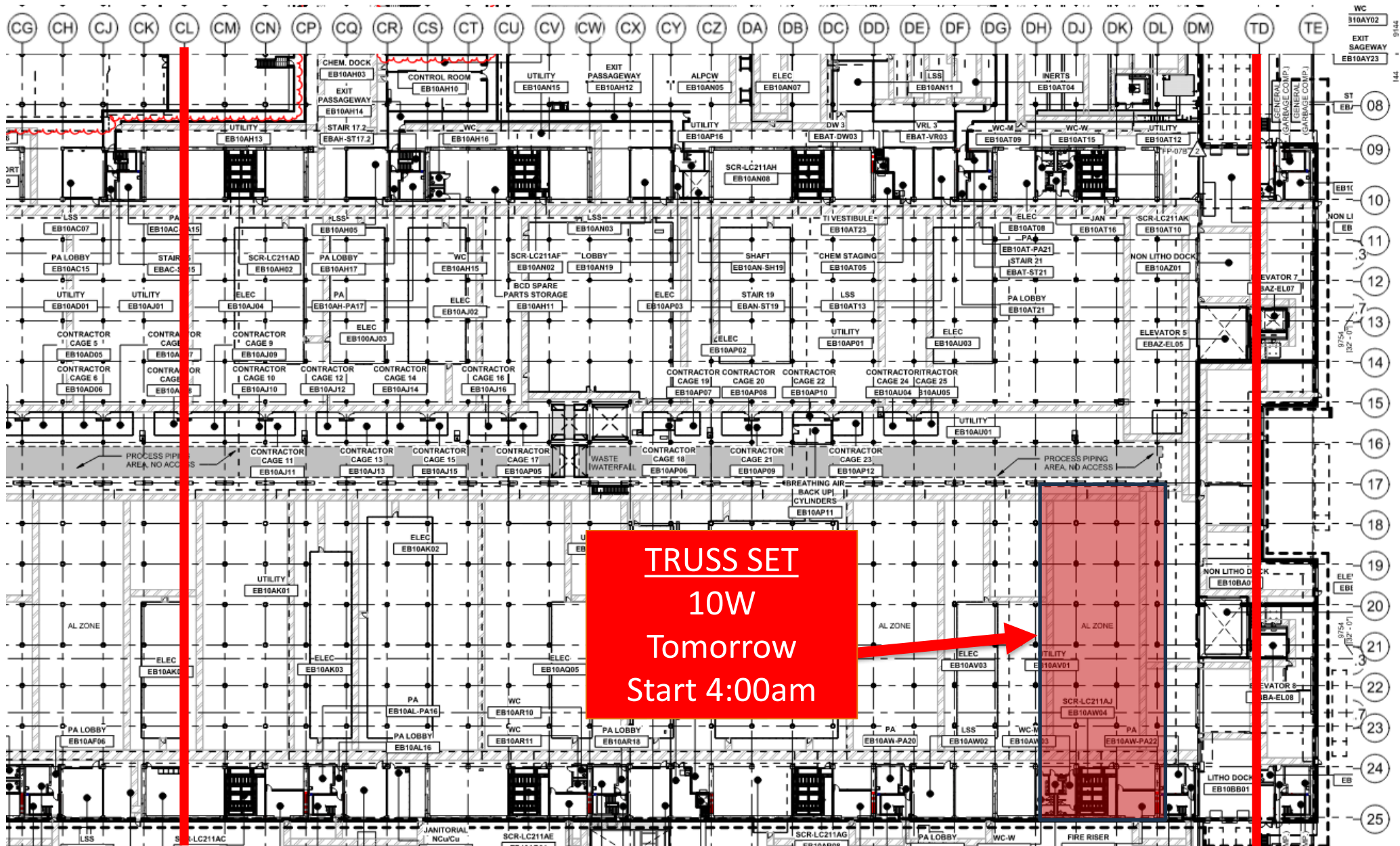
CUB1 stair pad ext.  
6:30 am

Apron/side walk  
6:00 am

Gas dock MOD1 retaining wall fig  
5:00 am

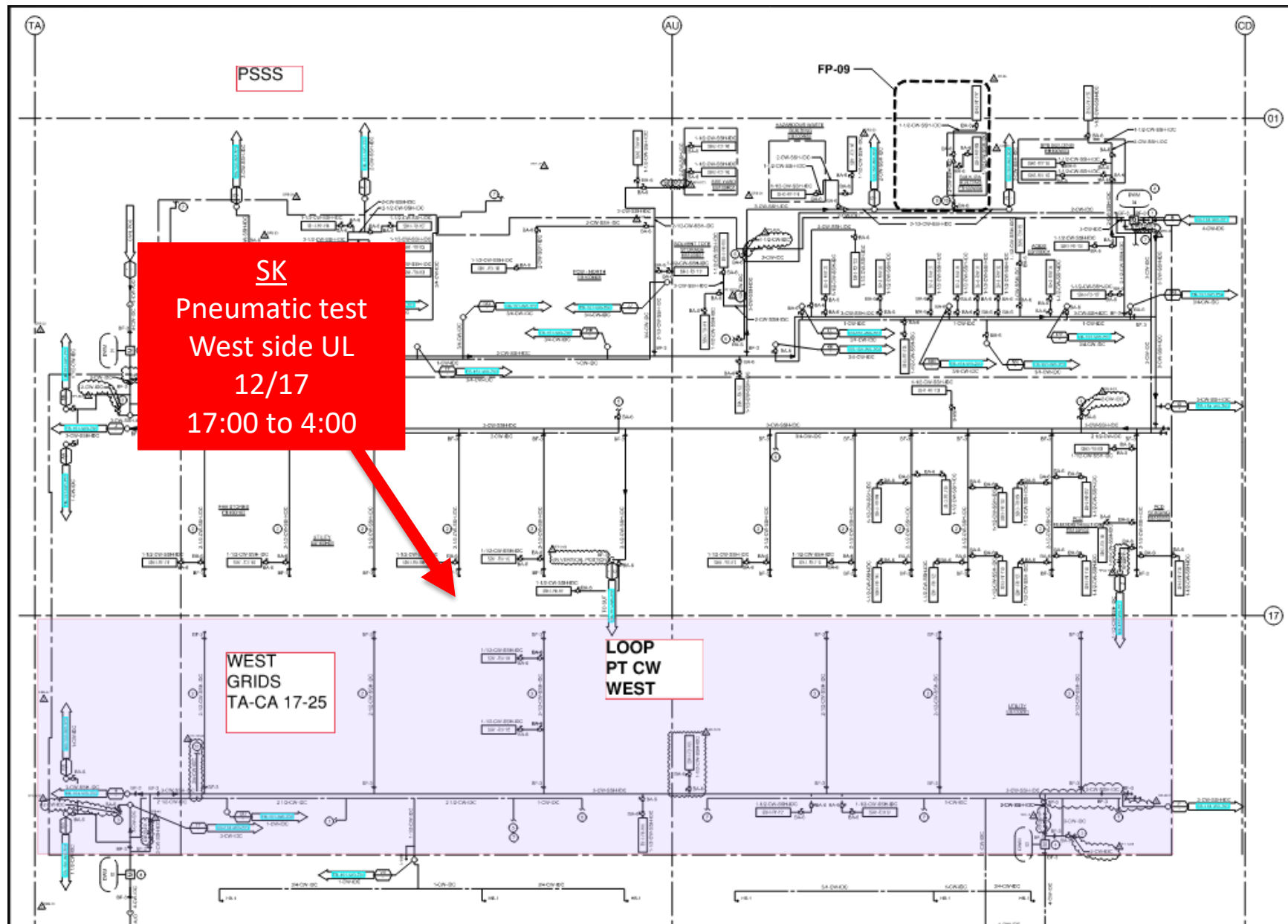


# UTILITY LEVEL TRUSS



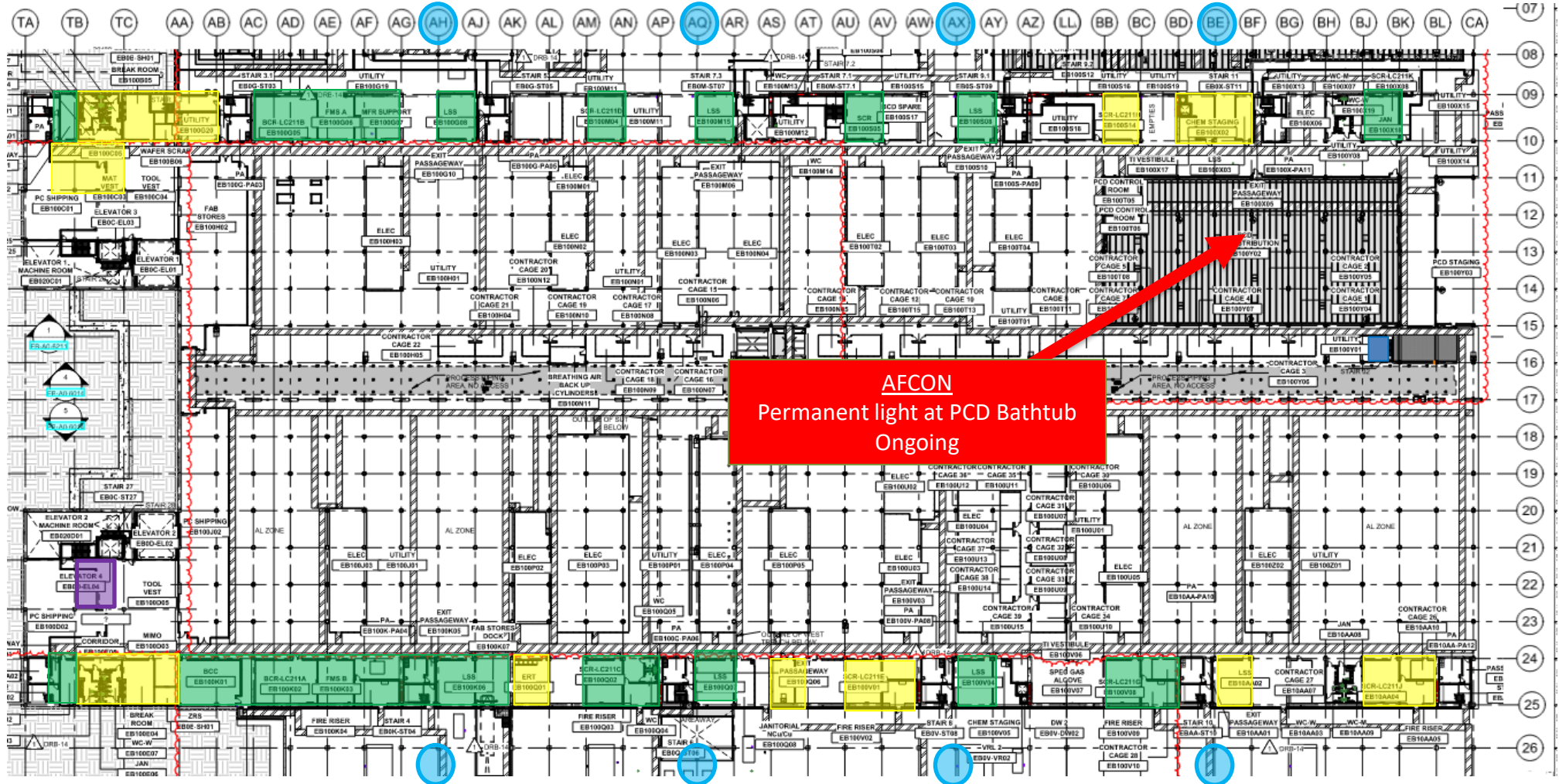


# UTILITY LEVEL PRESS T.





UTILITY LEVEL MOD1



BELFOR  
Mold remediation

ELRAM  
Drywall install

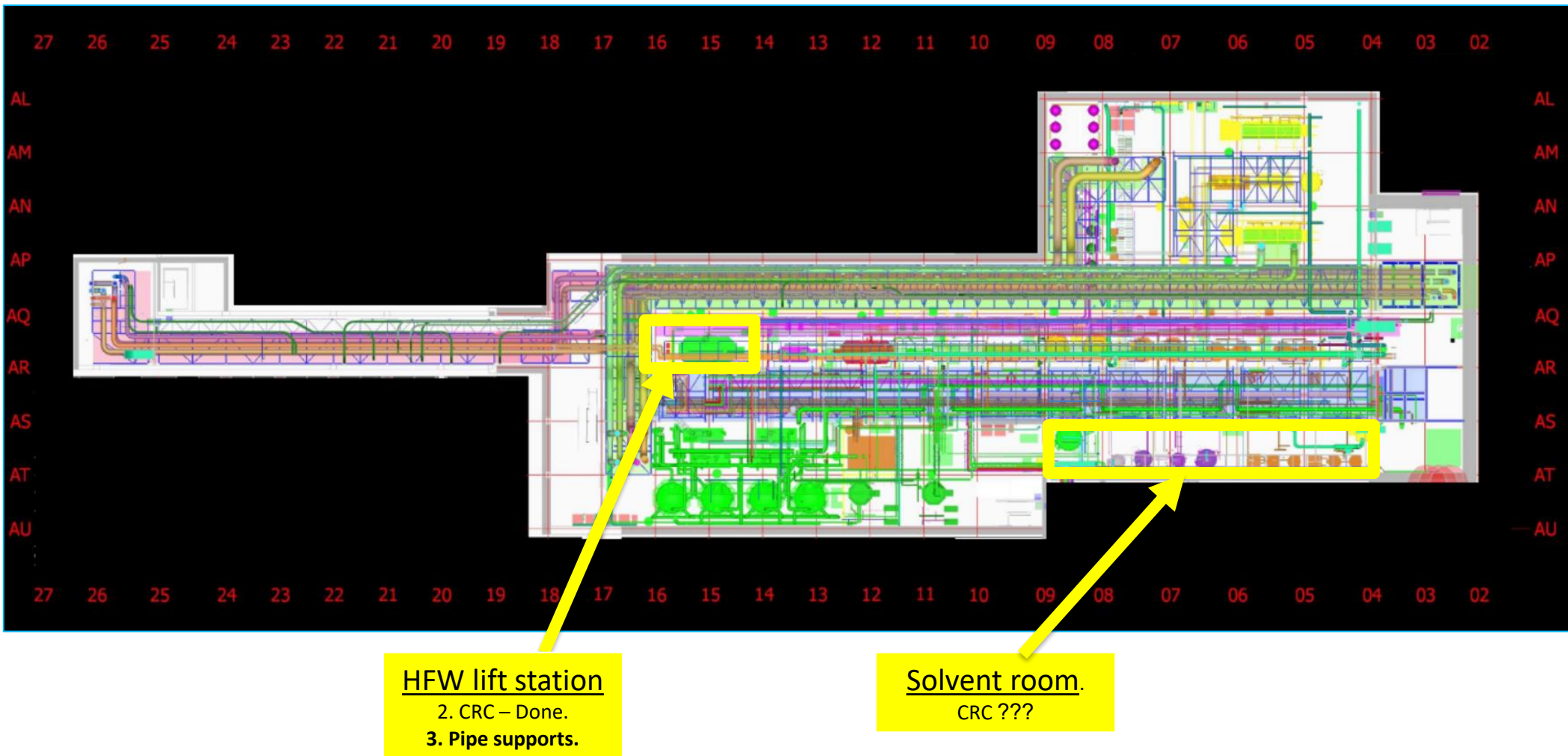
MEP+Electrical  
Ready for re-install

[illegible]

MALHIMIM  
9E 9W & 8W  
Ongoing



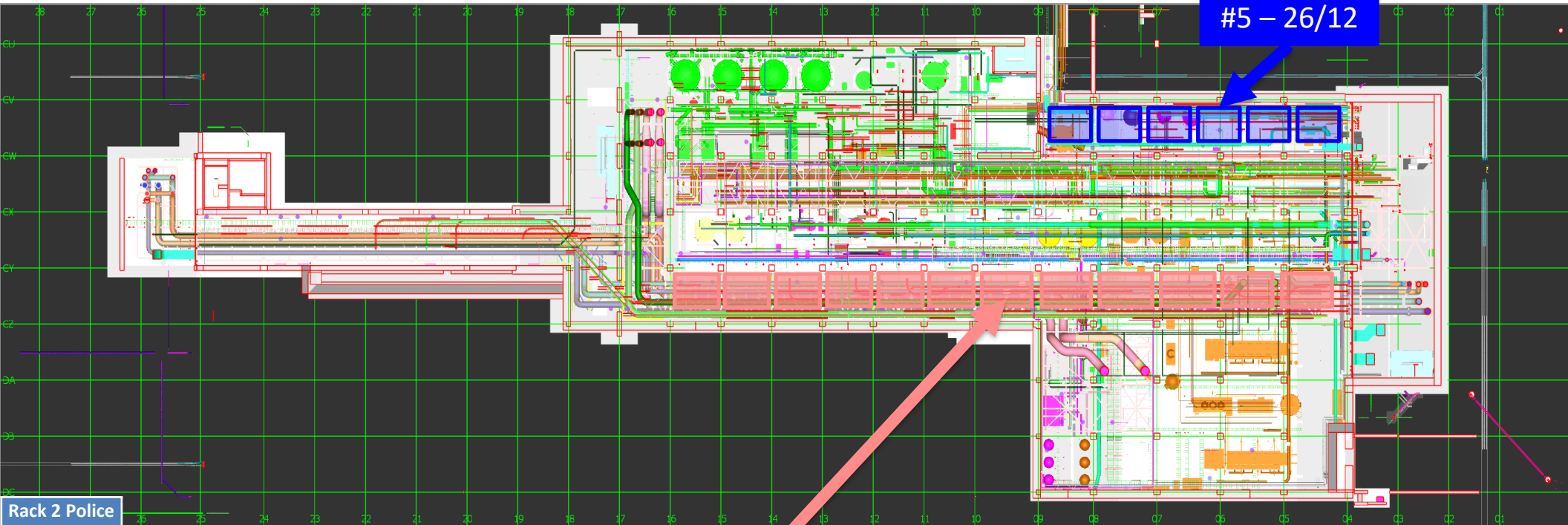
## SUT 38.1 LEVEL





# SUT 38.2 LEVEL

Rack 4b  
Lifting  
schedule  
#3-16/12v  
#4 – 22/12  
#5 – 26/12

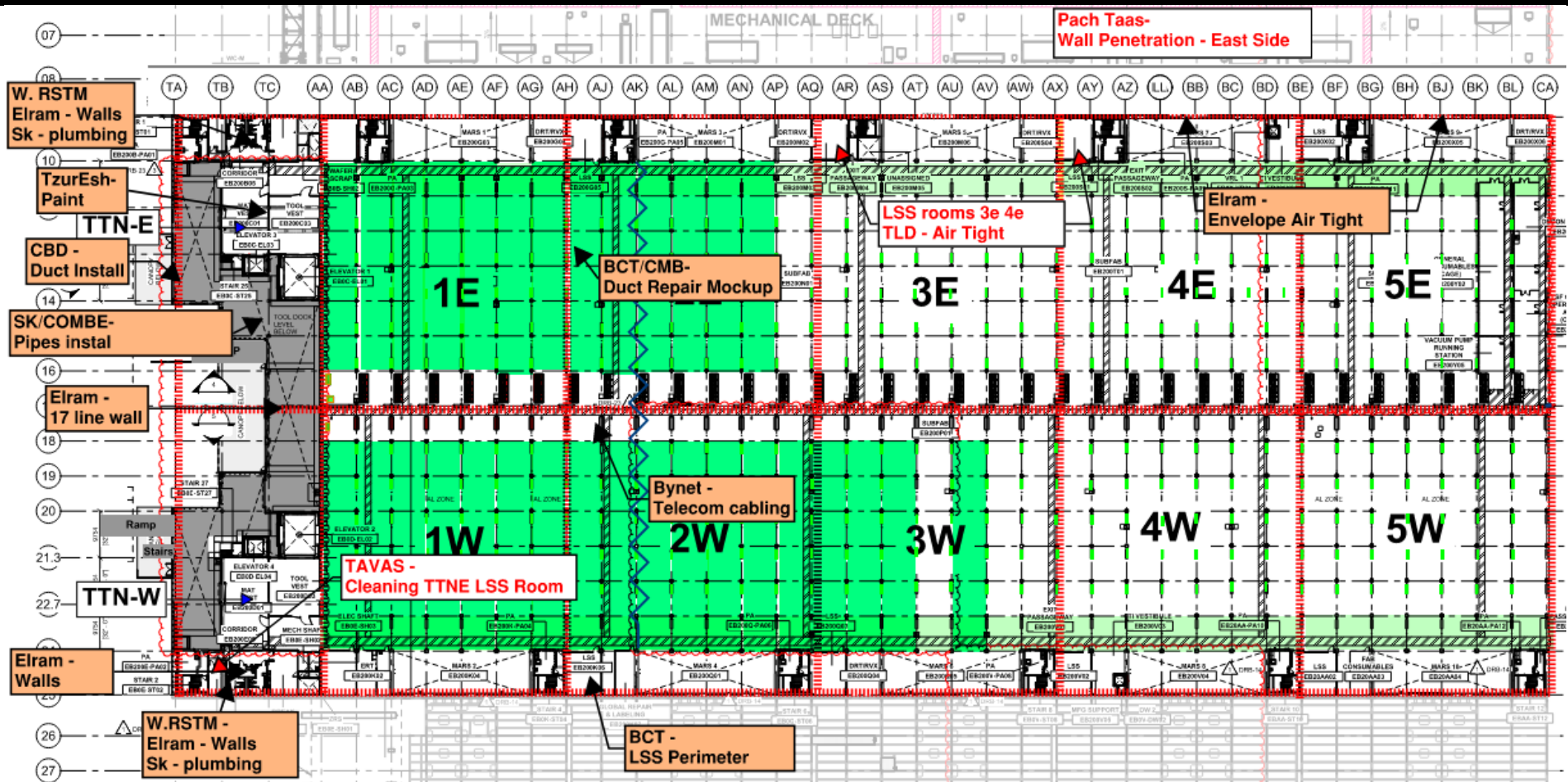


## Rack 2 Police escort dates

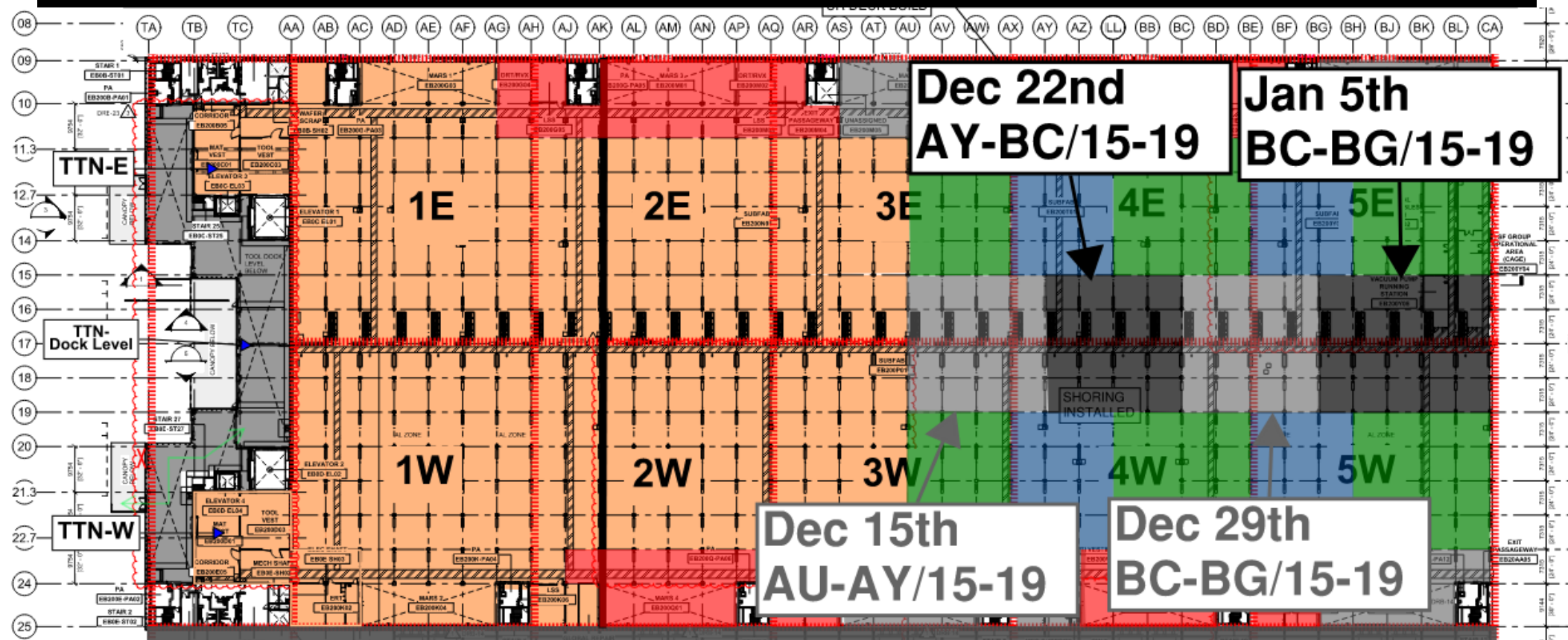
24.11.24
25.11.24
3.12.24
9.12.24
12.12.24
15.12.24
17.12.24
22.12.24
5.1.25
14.1.25
2.2.25
9.2.25

Rack 2  
MIMO -  
Module #7  
17th of Dec

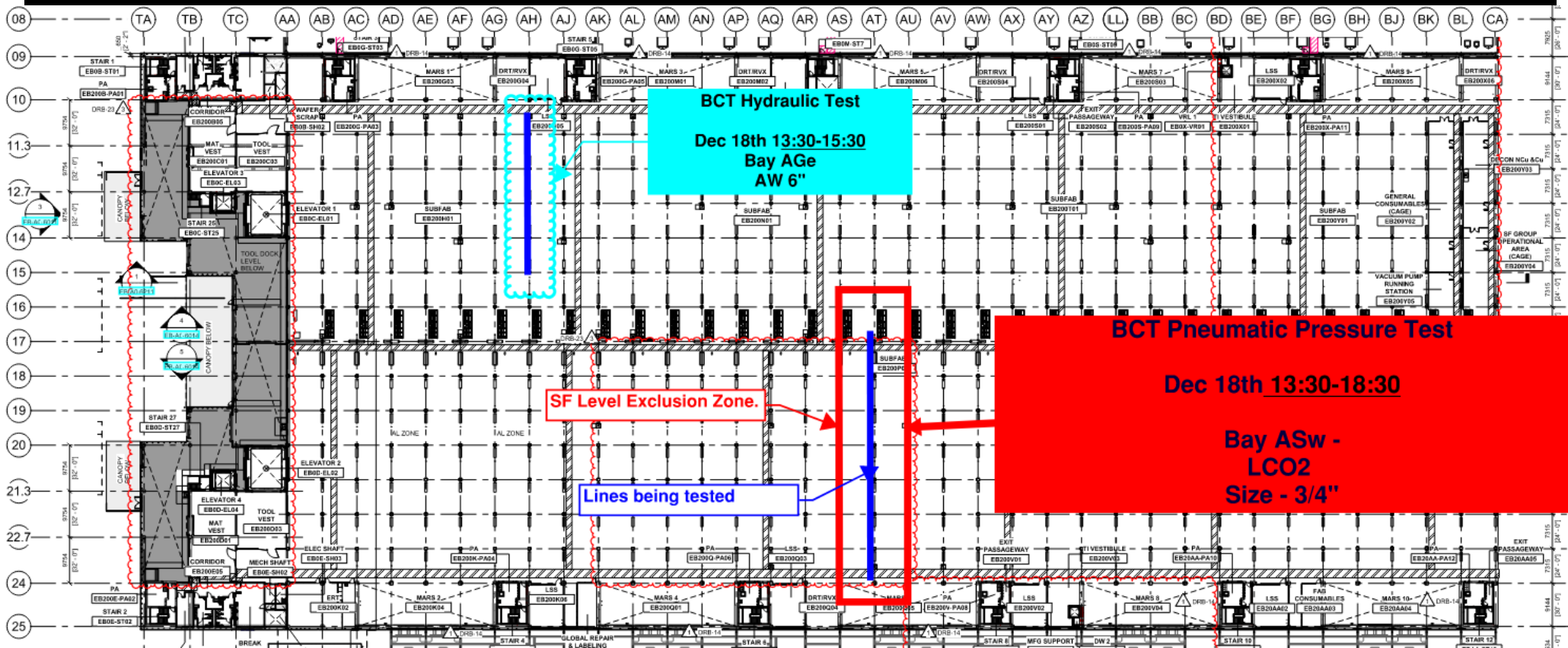
# SUBFAB BUILDOUT MOD 1



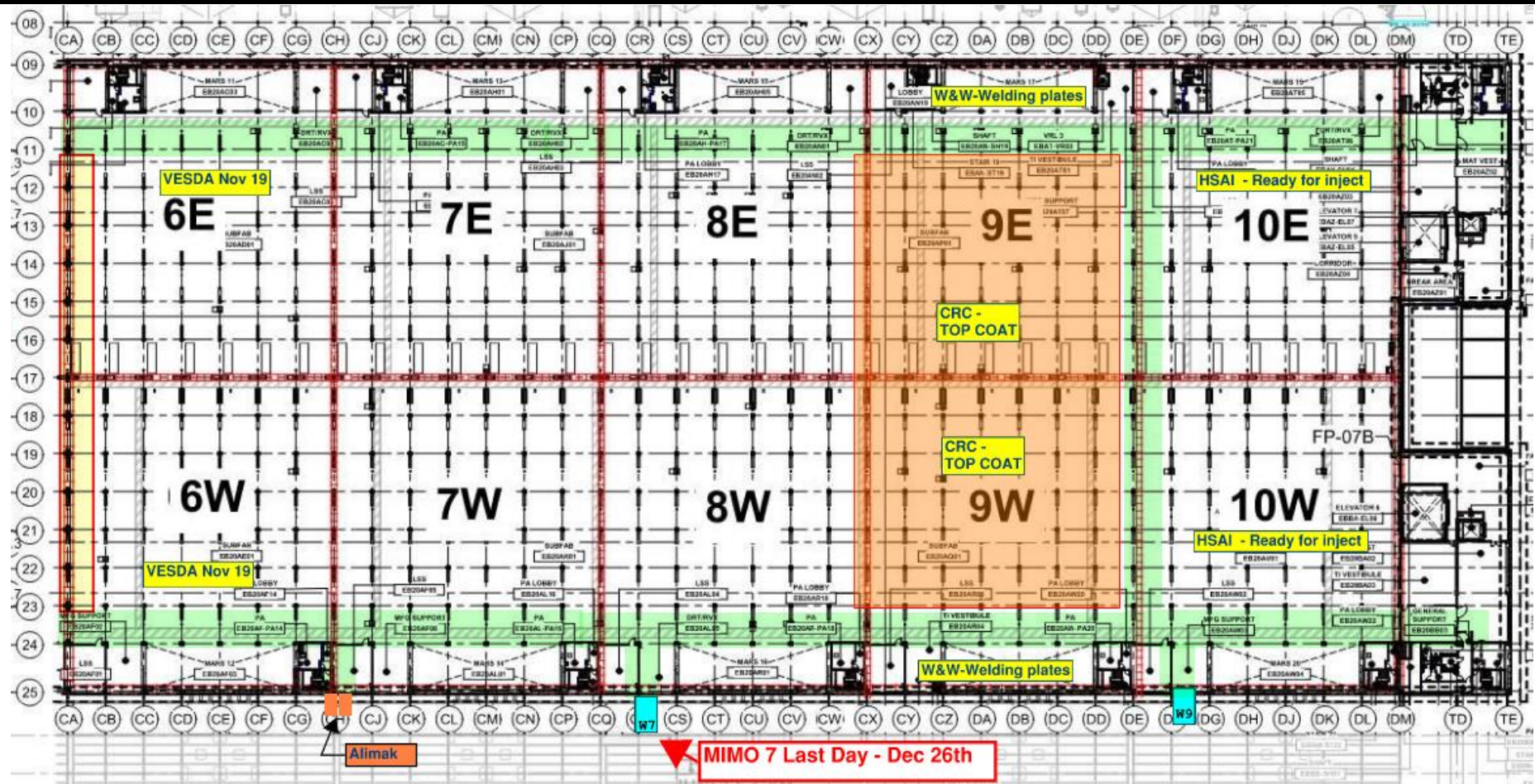
# SUBFAB CRC TOPCOAT

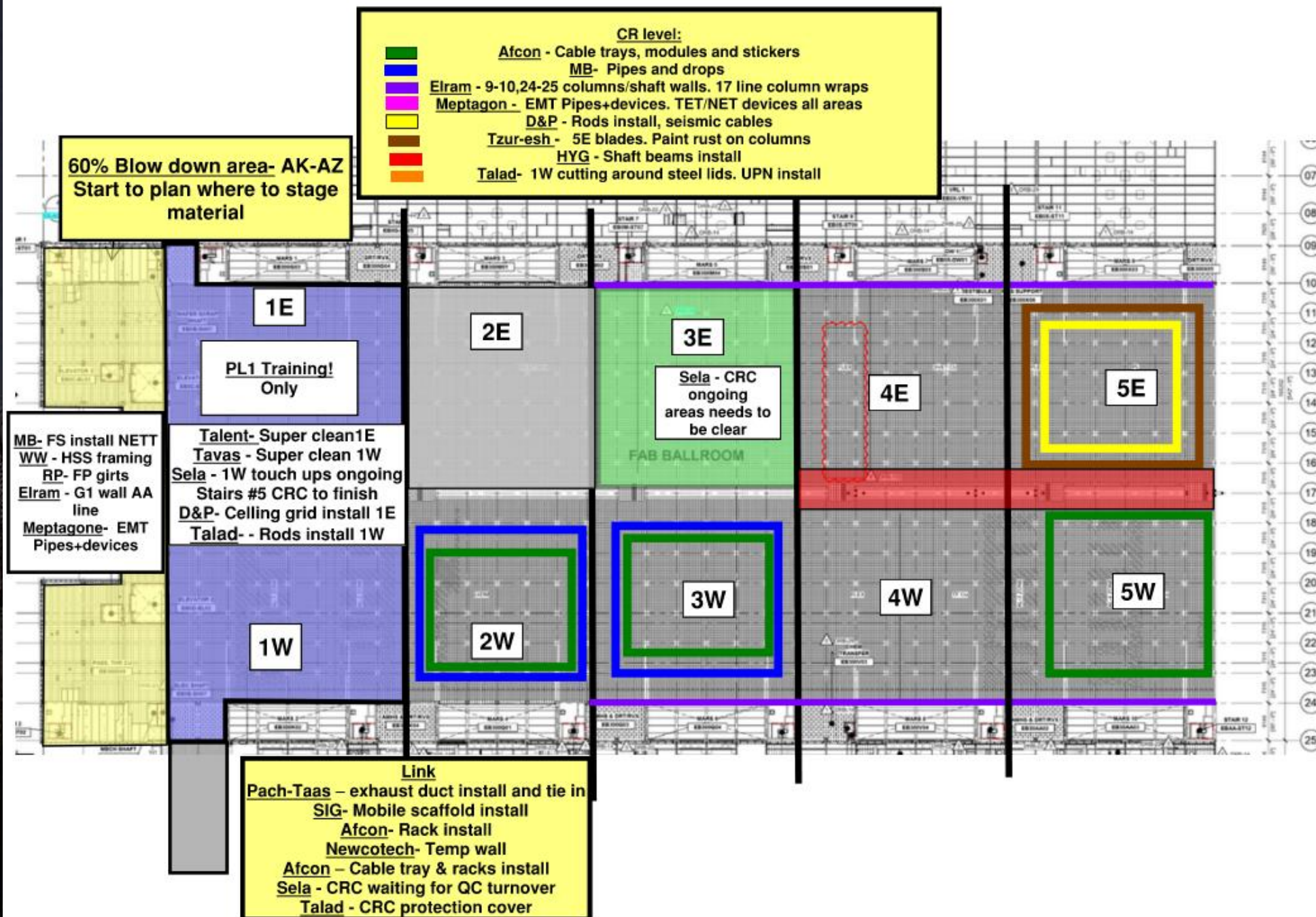
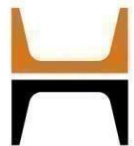


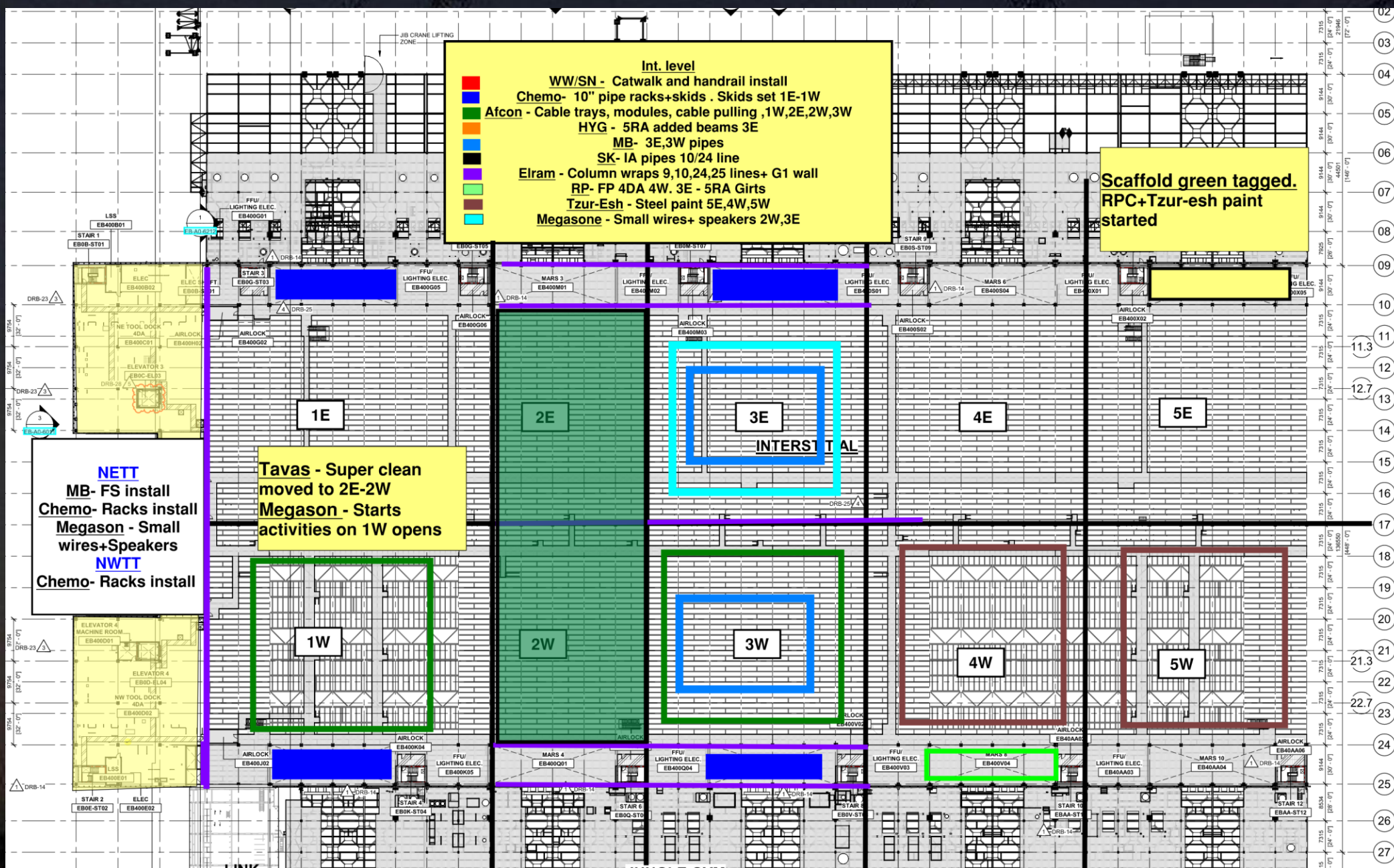
# BCT Pressure Test Tomorrow

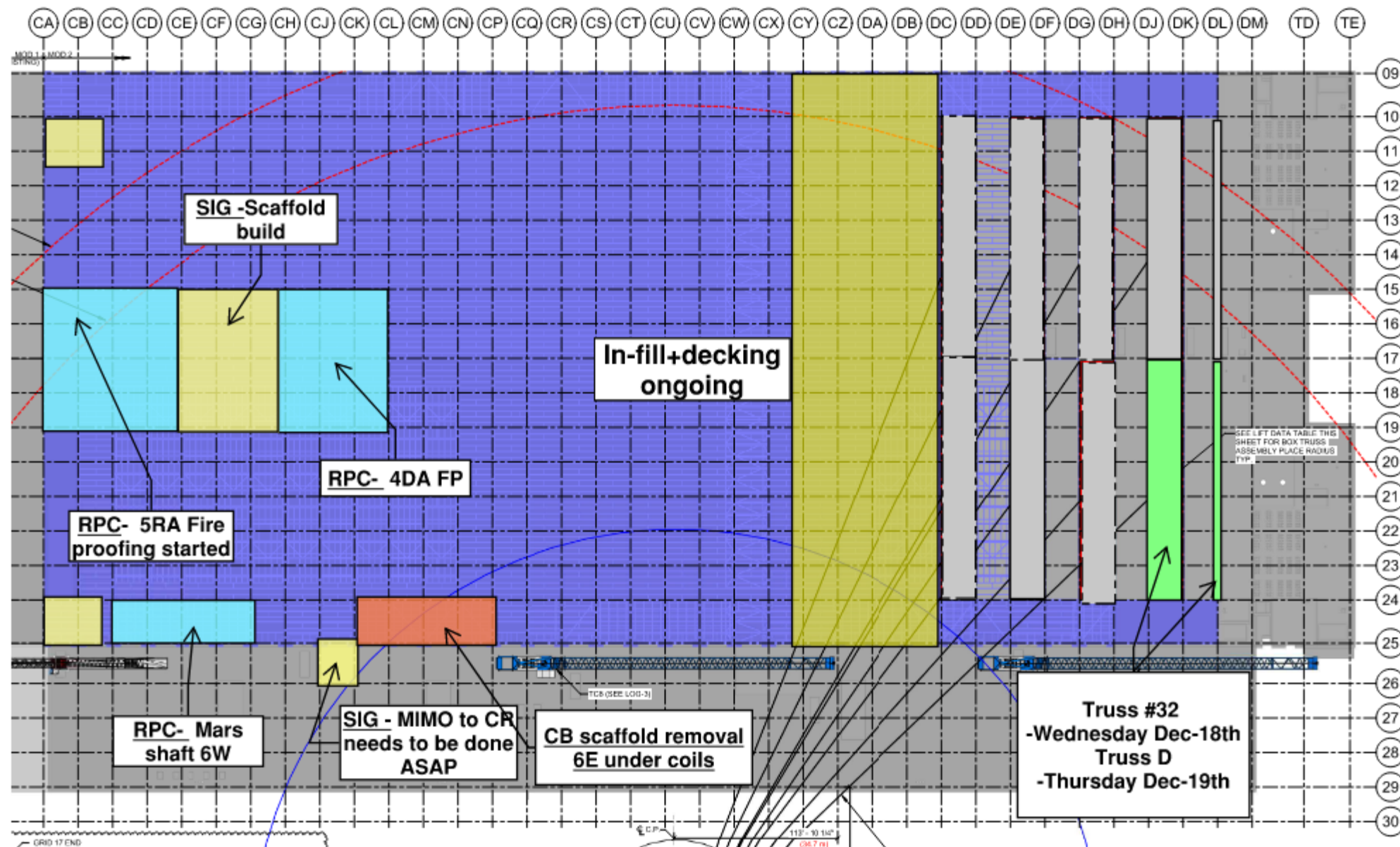
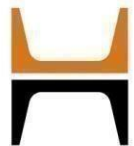


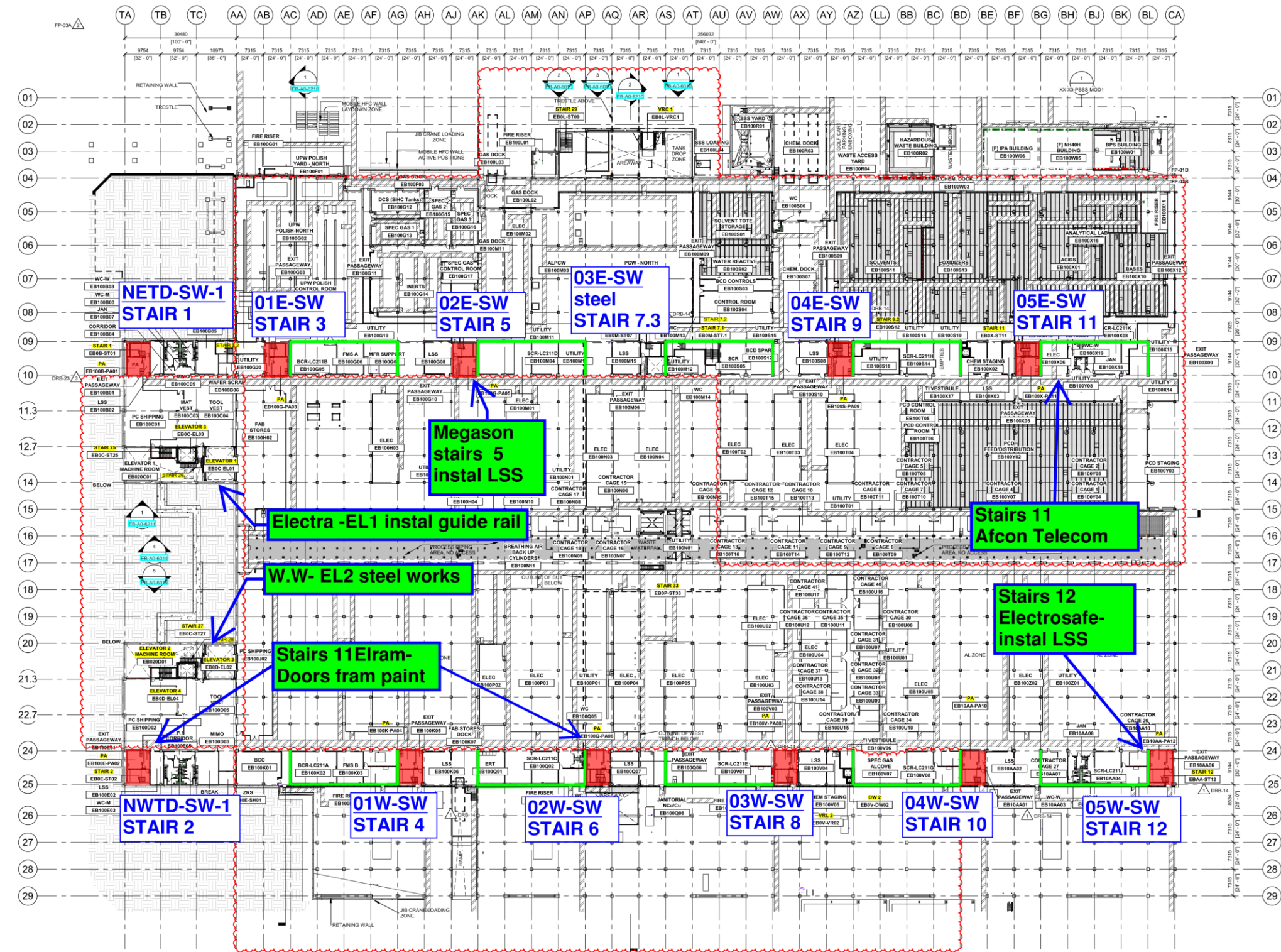
# SUBFAB BUILDOUT MOD 2











Siding - West FAB - JYG

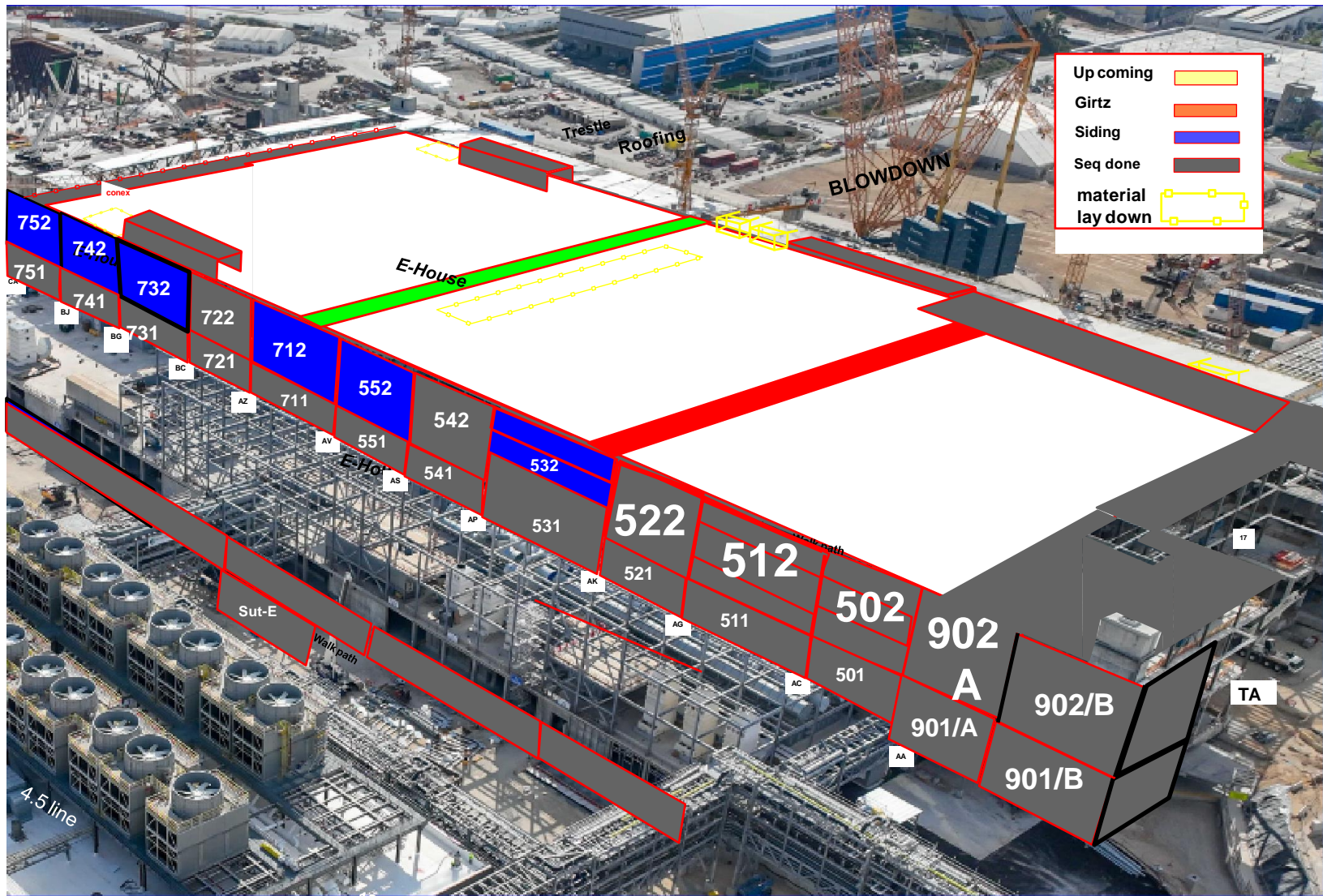
**BLOWDOWN 30%**

[illegible]

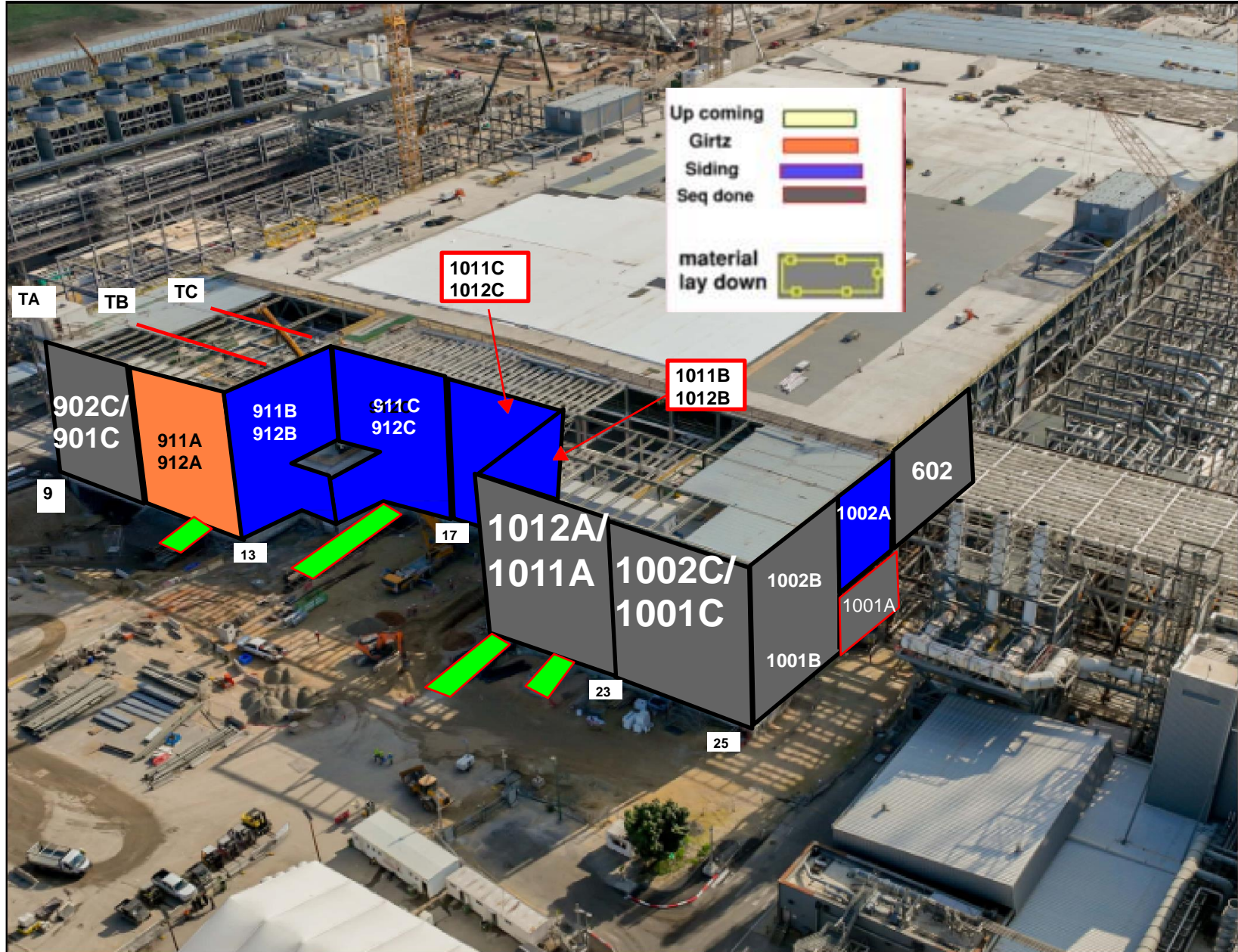
Siding - East FAB - PSSS

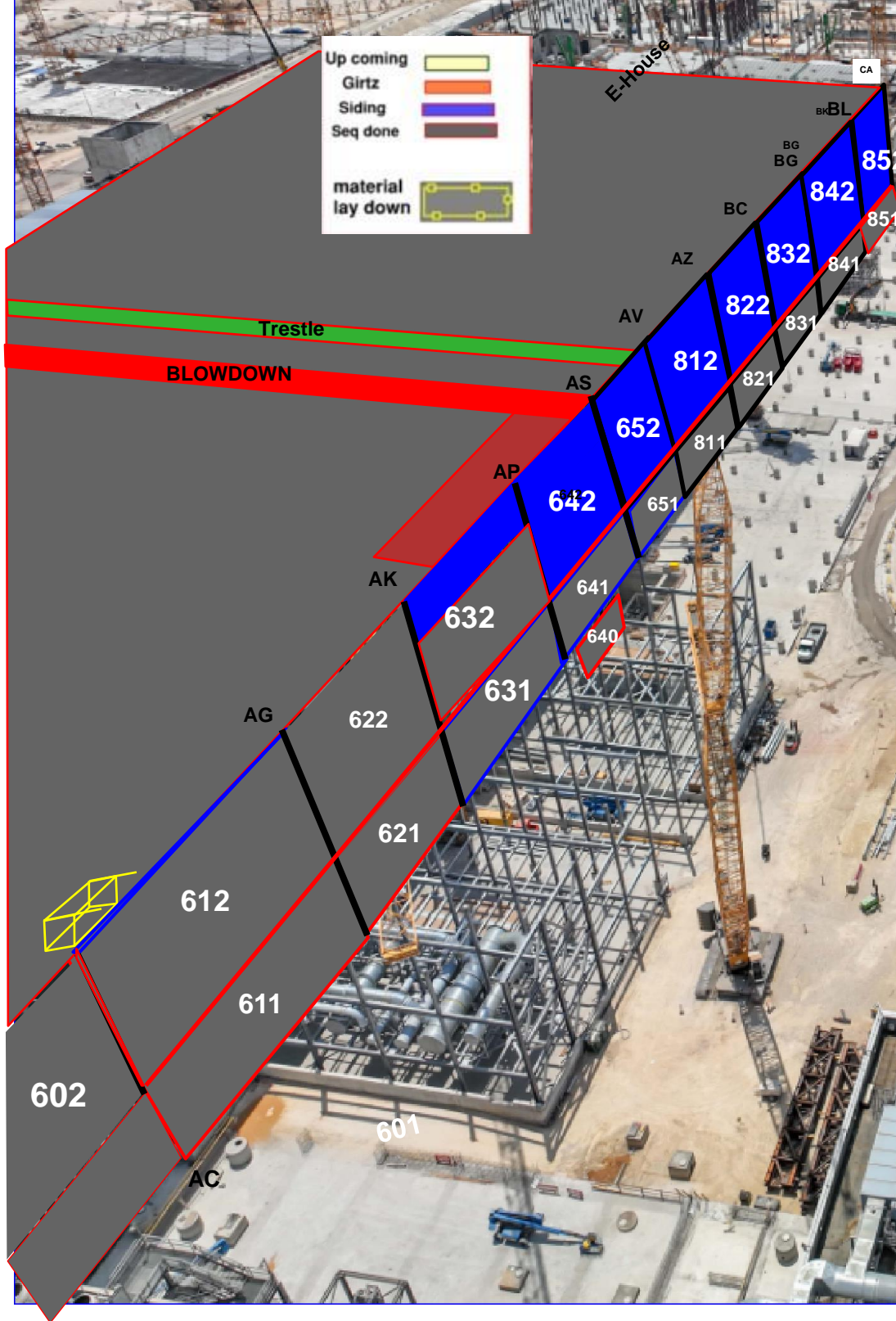
BLOWDOWN 30%

CA	CB	CC	CD	CE	CF	CG	CH	CI	CJ	CK	CL	CM	CN	CO	CP	CQ	CR	CS	CT	CU	CV	CW	CX	CY	CZ	DA	DB	DC	DD	DE	DF	DG	DH	DI	DJ	DK	DL	DM	DN	DO	DP	DQ	DR	DS	DT	DU	DV	DW	DX	DY	DZ	EA	EB	EC	ED	EE	EF	EG	EH	EI	EJ	EK	EL	EM	EN	EO	EP	EQ	ER	ES	ET	EU	EV	EW	EX	EY	EZ	FA	FB	FC	FD	FE	FF	FG	FH	FI	FJ	FK	FL	FM	FN	FO	FP	FQ	FR	FS	FT	FU	FV	FW	FX	FY	FZ	GA	GB	GC	GD	GE	GF	GG	GH	GI	GJ	GK	GL	GM	GN	GO	GP	GQ	GR	GS	GT	GU	GV	GW	GX	GY	GZ	HA	HB	HC	HD	HE	HF	HG	HH	HI	HJ	HK	HL	HM	HN	HO	HP	HQ	HR	HS	HT	HU	HV	HW	HX	HY	HZ	IA	IB	IC	ID	IE	IF	IG	IH	II	IJ	IK	IL	IM	IN	IO	IP	IQ	IR	IS	IT	IU	IV	IW	IX	IY	IZ	JA	JB	JC	JD	JE	JF	JG	JH	JI	JJ	JK	JL	JM	JN	JO	JP	JQ	JR	JS	JT	JU	JV	JW	JX	JY	JZ	KA	KB	KC	KD	KE	KF	KG	KH	KI	KJ	KK	KL	KM	KN	KO	KP	KQ	KR	KS	KT	KU	KV	KW	KX	KY	KZ	LA	LB	LC	LD	LE	LF	LG	LH	LI	LJ	LK	LM	LN	LO	LP	LQ	LR	LS	LT	LU	LV	LW	LX	LY	LZ	MA	MB	MC	MD	ME	MF	MG	MH	MI	MJ	MK	ML	MM	MN	MO	MP	MQ	MR	MS	MT	MU	MV	MW	MX	MY	MZ	NA	NB	NC	ND	NE	NF	NG	NH	NI	NJ	NK	NL	NM	NN	NO	NP	NQ	NR	NS	NT	NU	NV	NW	NX	NY	NZ	OA	OB	OC	OD	OE	OF	OG	OH	OI	OJ	OK	OL	OM	ON	OO	OP	OQ	OR	OS	OT	OU	OV	OW	OX	OY	OZ	PA	PB	PC	PD	PE	PF	PG	PH	PI	PJ	PK	PL	PM	PN	PO	PP	PQ	PR	PS	PT	PU	PV	PW	PX	PY	PZ	QA	QB	QC	QD	QE	QF	QG	QH	QI	QJ	QK	QL	QM	QN	QO	QP	QQ	QR	QS	QT	QU	QV	QW	QX	QY	QZ	RA	RB	RC	RD	RE	RF	RG	RH	RI	RJ	RK	RL	RM	RN	RO	RP	RQ	RR	RS	RT	RU	RV	RW	RX	RY	RZ	SA	SB	SC	SD	SE	SF	SG	SH	SI	SJ	SK	SL	SM	SN	SO	SP	SQ	SR	SS	ST	SU	SV	SW	SX	SY	SZ	TA	TB	TC	TD	TE	TF	TG	TH	TI	TJ	TK	TL	TM	TN	TO	TP	TQ	TR	TS	TT	TU	TV	TW	TX	TY	TZ	UA	UB	UC	UD	UE	UF	UG	UH	UI	UJ	UK	UL	UM	UN	UO	UP	UQ	UR	US	UT	UU	UV	UW	UX	UY	UZ	VA	VB	VC	VD	VE	VF	VG	VH	VI	VJ	VK	VL	VM	VN	VO	VP	VQ	VR	VS	VT	VU	VV	VW	VX	VY	VZ	WA	WB	WC	WD	WE	WF	WG	WH	WI	WJ	WK	WL	WM	WN	WO	WP	WQ	WR	WS	WT	WU	WV	WW	WX	WY	WZ	XA	XB	XC	XD	XE	XF	YG	YH	YI	YJ	YK	YL	YM	YN	YO	YP	YQ	YR	YS	YT	YU	YV	YW	YX	YY	YZ	ZA	ZB	ZC	ZD	ZE	ZF	ZG	ZH	ZI	ZJ	ZK	ZL	ZM	ZN	ZO	ZP	ZQ	ZR	ZS	ZT	ZU	ZV	ZW	ZX	ZY	ZZ	AA	AB	AC	AD	AE	AF	AG	AH	AI	AJ	AK	AL	AM	AN	AO	AP	AQ	AR	AS	AT	AU	AV	AW	AX	AY	AZ	BA	BB	BC	BD	BE	BF	BG	BH	BI	BJ	BK	BL	BM	BN	BO	BP	BQ	BR	BS	BT	BU	BV	BW	BX	BY	BZ	CA	CB	CC	CD	CE	CF	CG	CH	CI	CJ	CK	CL	CM	CN	CO	CP	CQ	CR	CS	CT	CU	CV	CW	CX	CY	CZ
751/752										741/742										731/732										721/722										711/712										551/552										541/542										531/532										521/522										511/512										501/502										901/902										Total Installed %																																																																																																																																																																																																																																																																																																																																																																																																																																																																																																																																																																										
24	24	24	24	24	24	24	24	24	24	24	24	24	24	24	24	24	24	24	24	24	24	24	24	24	24	24	24	24	24	24	24	24	24	24	24	24	24	24	24	24	24	24	24	24	24	24	24	24	24	24	24	24	24	24	24	24	24	24	24	24	24	24	24	24	24	24	24	24	24	24	24	24	24	24	24	24	24	24	24	24	24	24	24	24	24	24	24	24	24	24	24	24	24	24	24	24	24	24	24	24	24	24	24	24	24	24	24	24	24	24	24	24	24	24	24	24	24	24	24	24	24	24	24	24	24	24	24	24	24	24	24	24	24	24	24	24	24	24	24	24	24	24	24	24	24	24	24	24	24	24	24	24	24	24	24	24	24	24	24	24	24	24	24	24	24	24	24	24	24	24	24	24	24	24	24	24	24	24	24	24	24	24	24	24	24	24	24	24	24	24	24	24	24	24	24	24	24	24	24	24	24	24	24	24	24	24	24	24	24	24	24	24	24	24	24	24	24	24	24	24	24	24	24	24	24	24	24	24	24	24	24	24	24	24	24	24	24	24	24	24	24	24	24	24	24	24	24	24	24	24	24	24	24	24	24	24	24	24	24	24	24	24	24	24	24	24	24	24	24	24	24	24	24	24	24	24	24	24	24	24	24	24	24	24	24	24	24	24	24	24	24	24	24	24	24	24	24	24	24	24	24	24	24	24	24	24	24	24	24	24	24	24	24	24	24	24	24	24	24	24	24	24	24	24	24	24	24	24	24	24	24	24	24	24	24	24	24	24	24	24	24	24	24	24	24	24	24	24	24	24	24	24	24	24	24	24	24	24	24	24	24	24	24	24	24	24	24	24	24	24	24	24	24	24	24	24	24	24	24	24	24	24	24	24	24	24	24	24	24	24	24	24	24	24	24	24	24	24	24	24	24	24	24	24																																																																																																																																																																																																																																																																														



Walk path

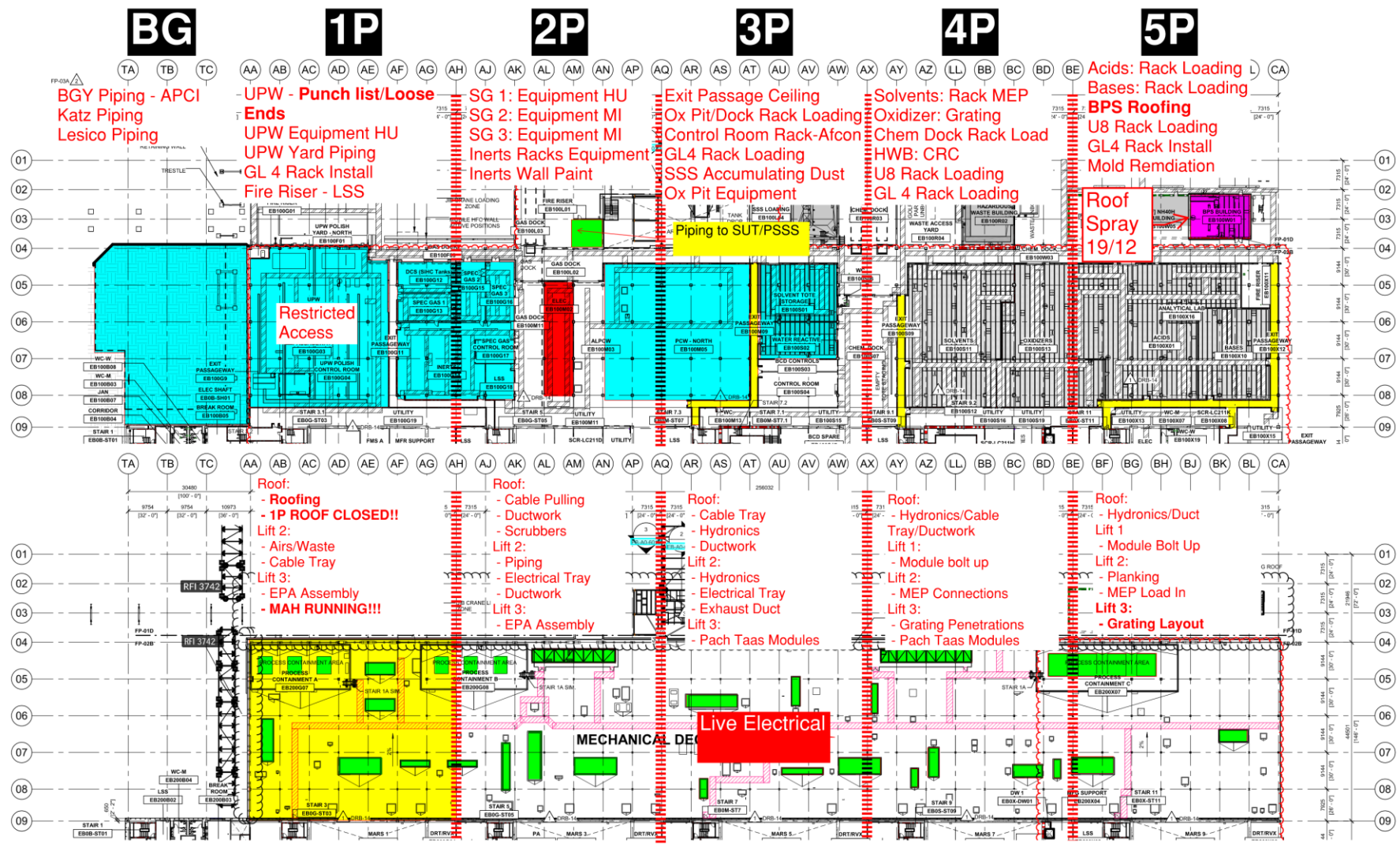




# PSSS.1

## Utility Level 1YA

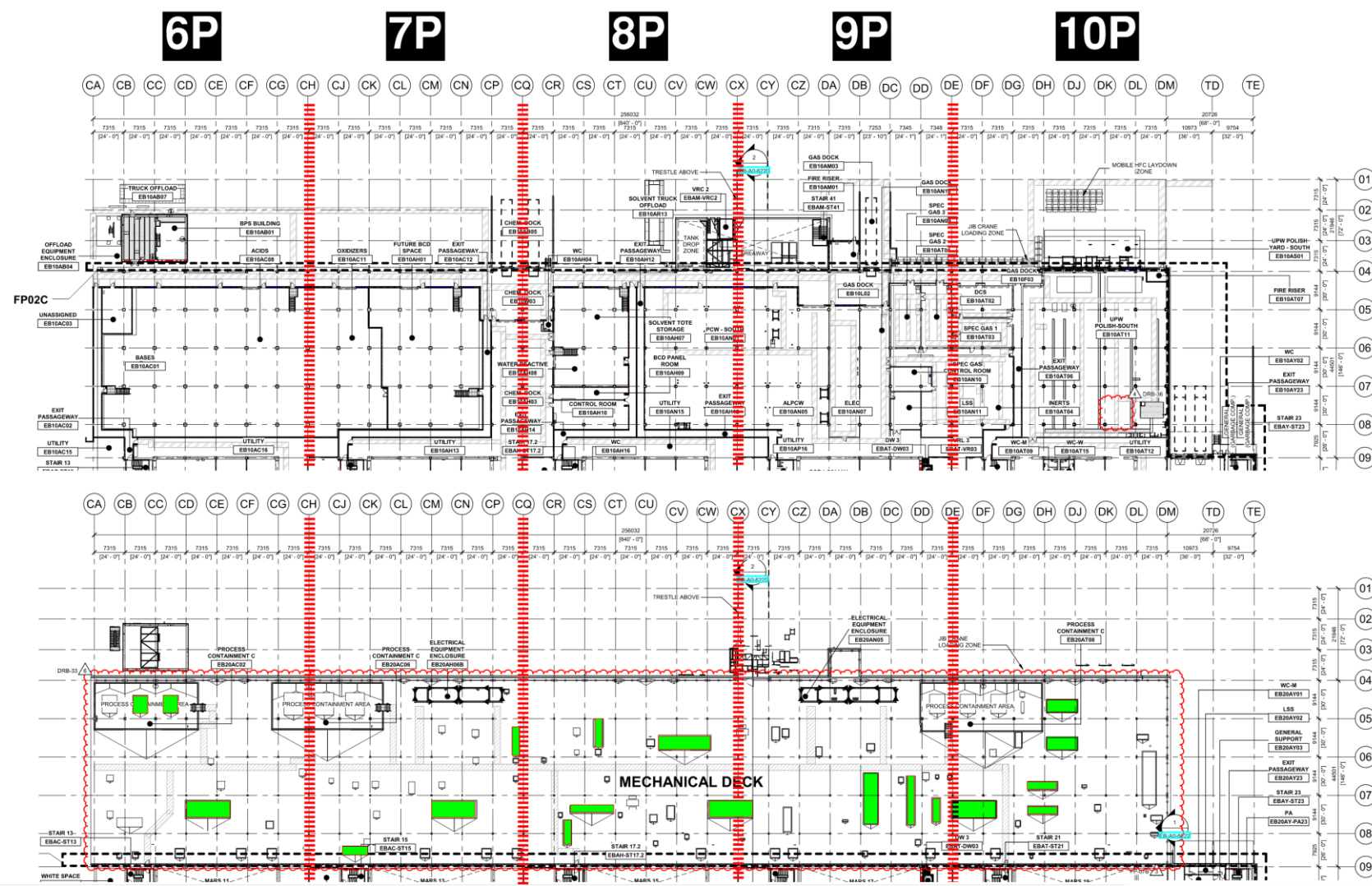
## PSSS Roof 2SA



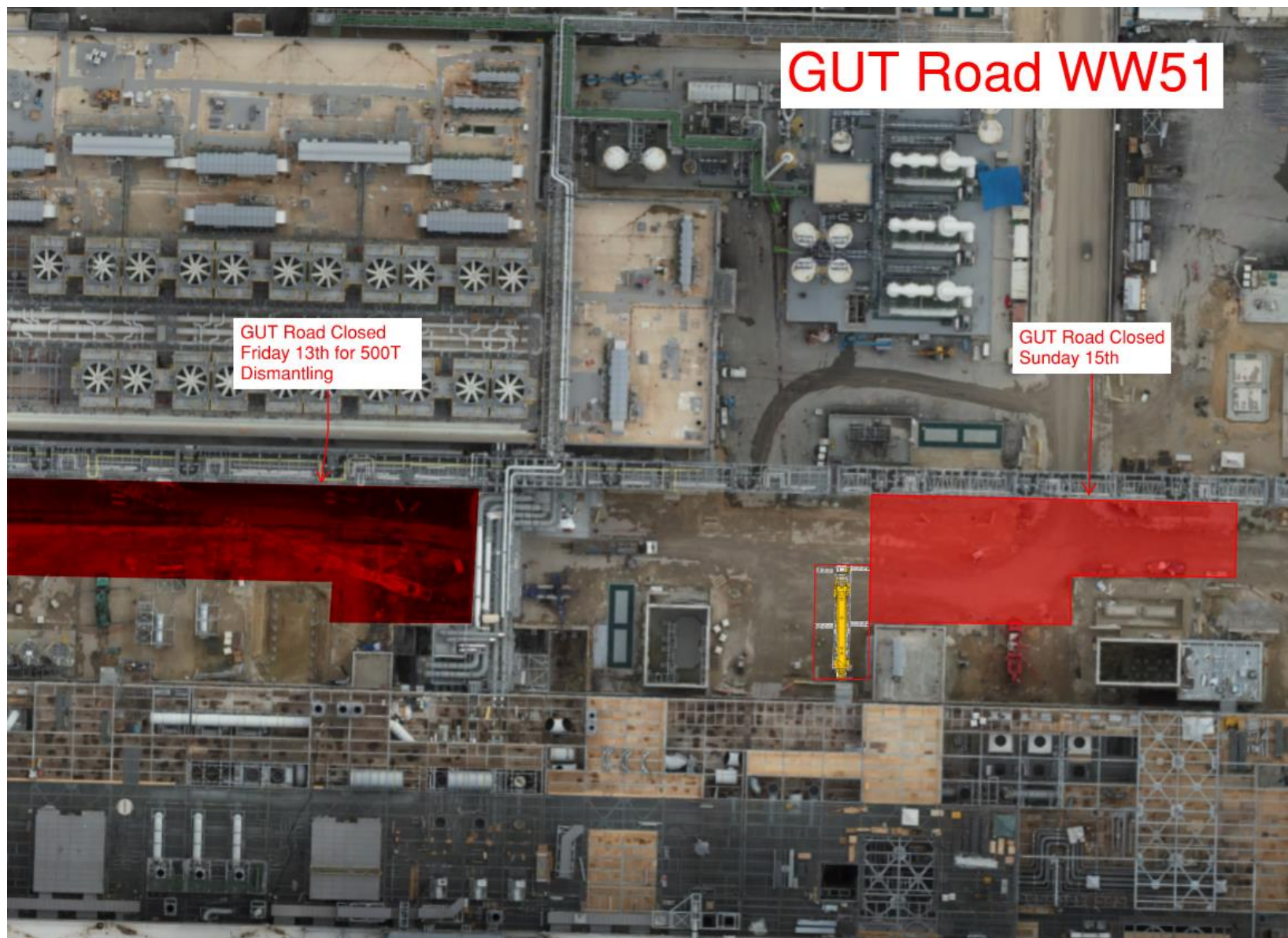
# PSSS.2

Utility Level  
1YA

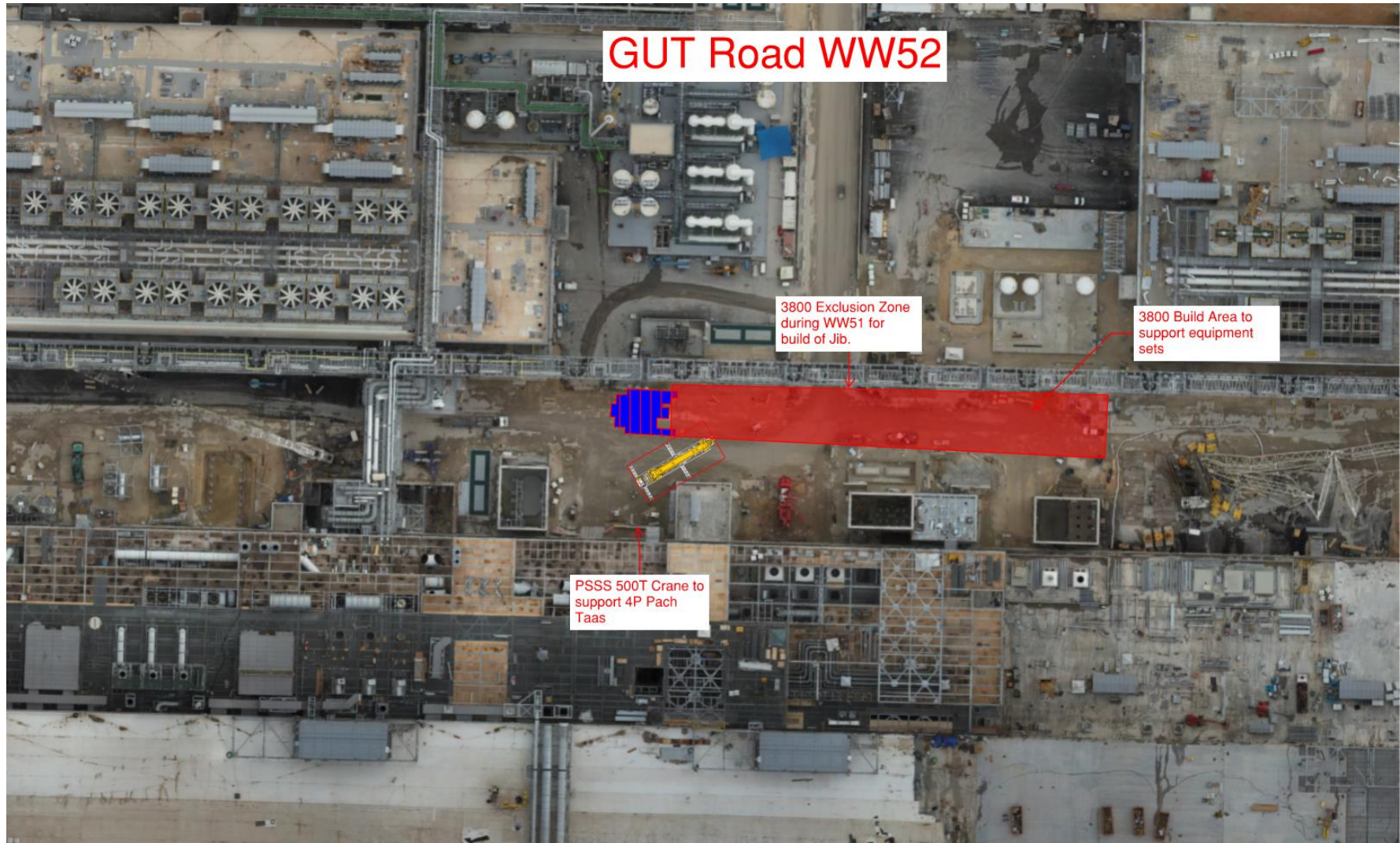
PSSS Roof  
2SA



500T  
Moving  
Dec.  
13-15

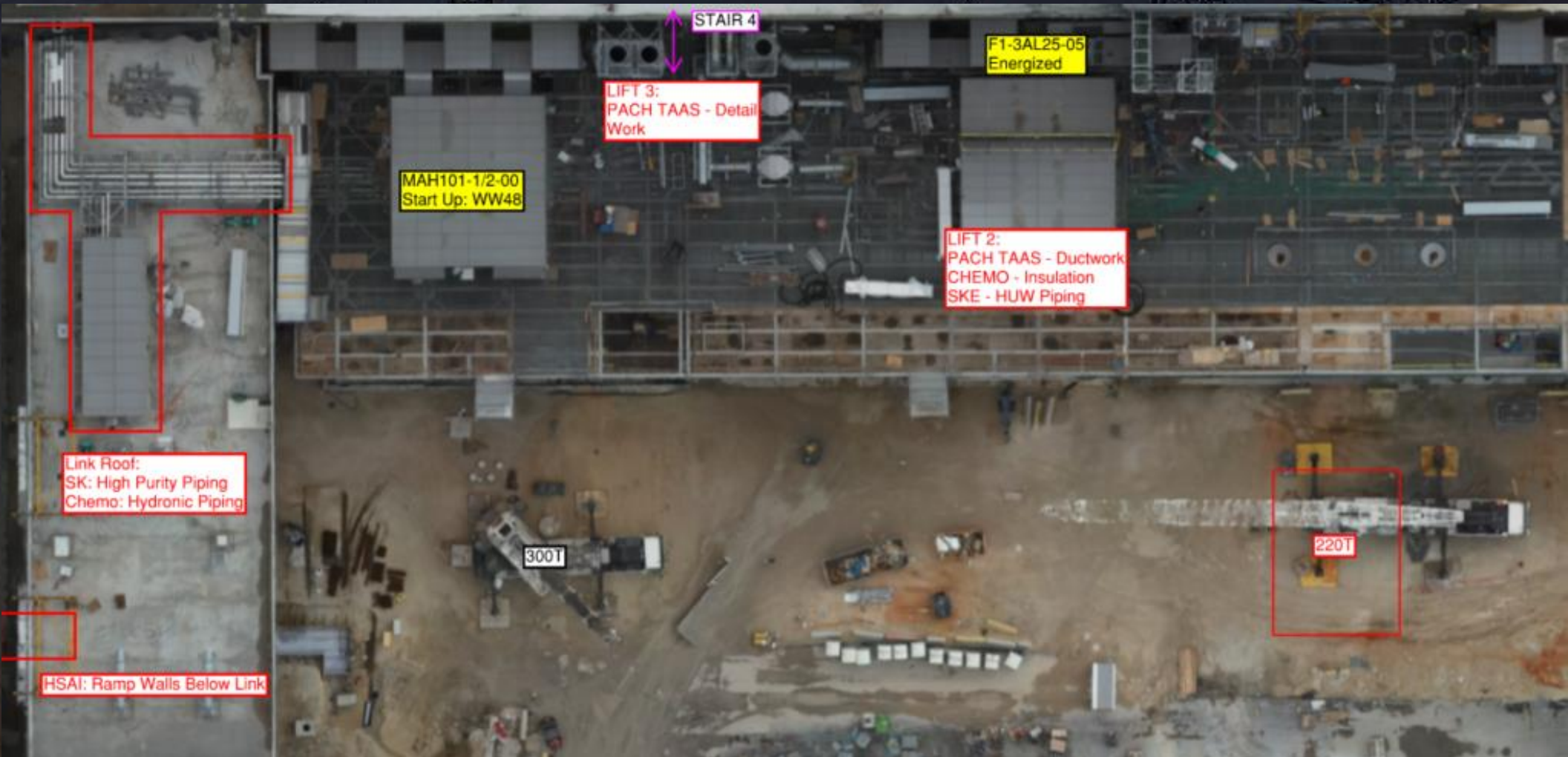


3800  
Build  
22<sup>nd</sup>\_  
26<sup>th</sup>





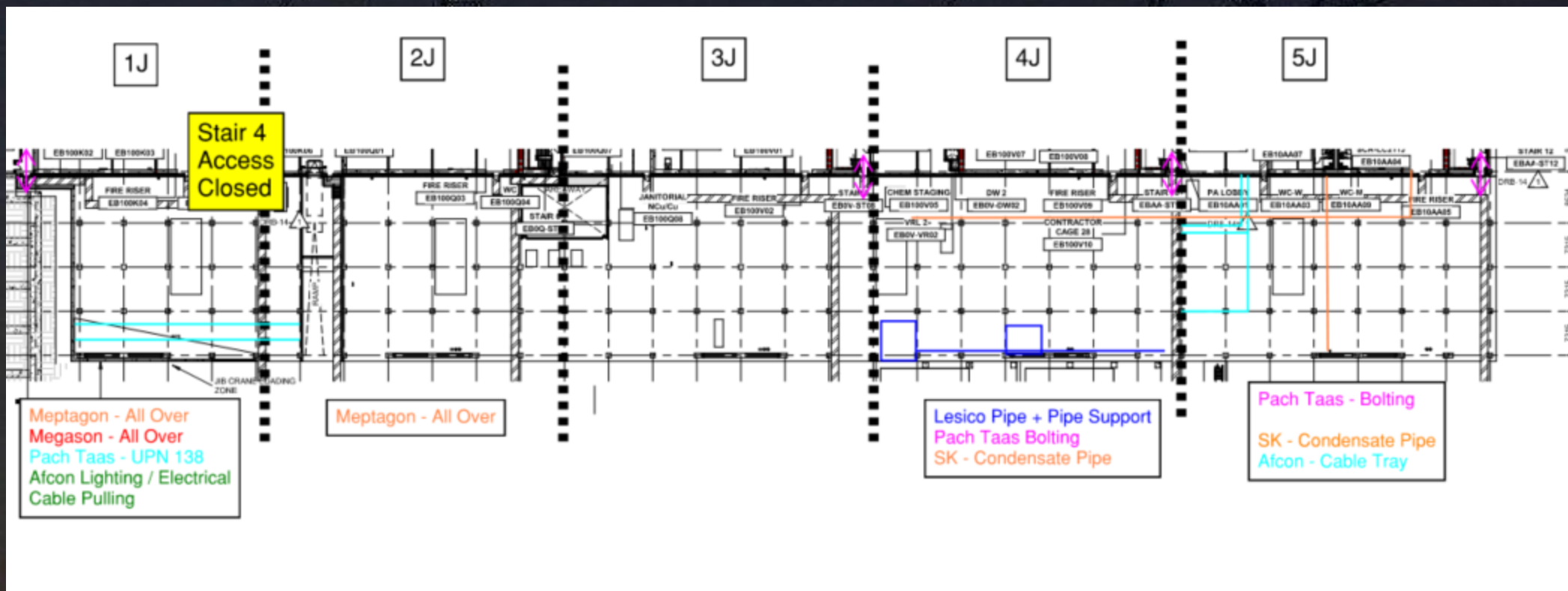
# WJG 01J, 02J LIFT 2 & 3

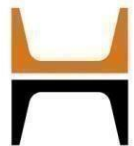




# WJG 03J, 04J, 05J LIFT 2 & 3





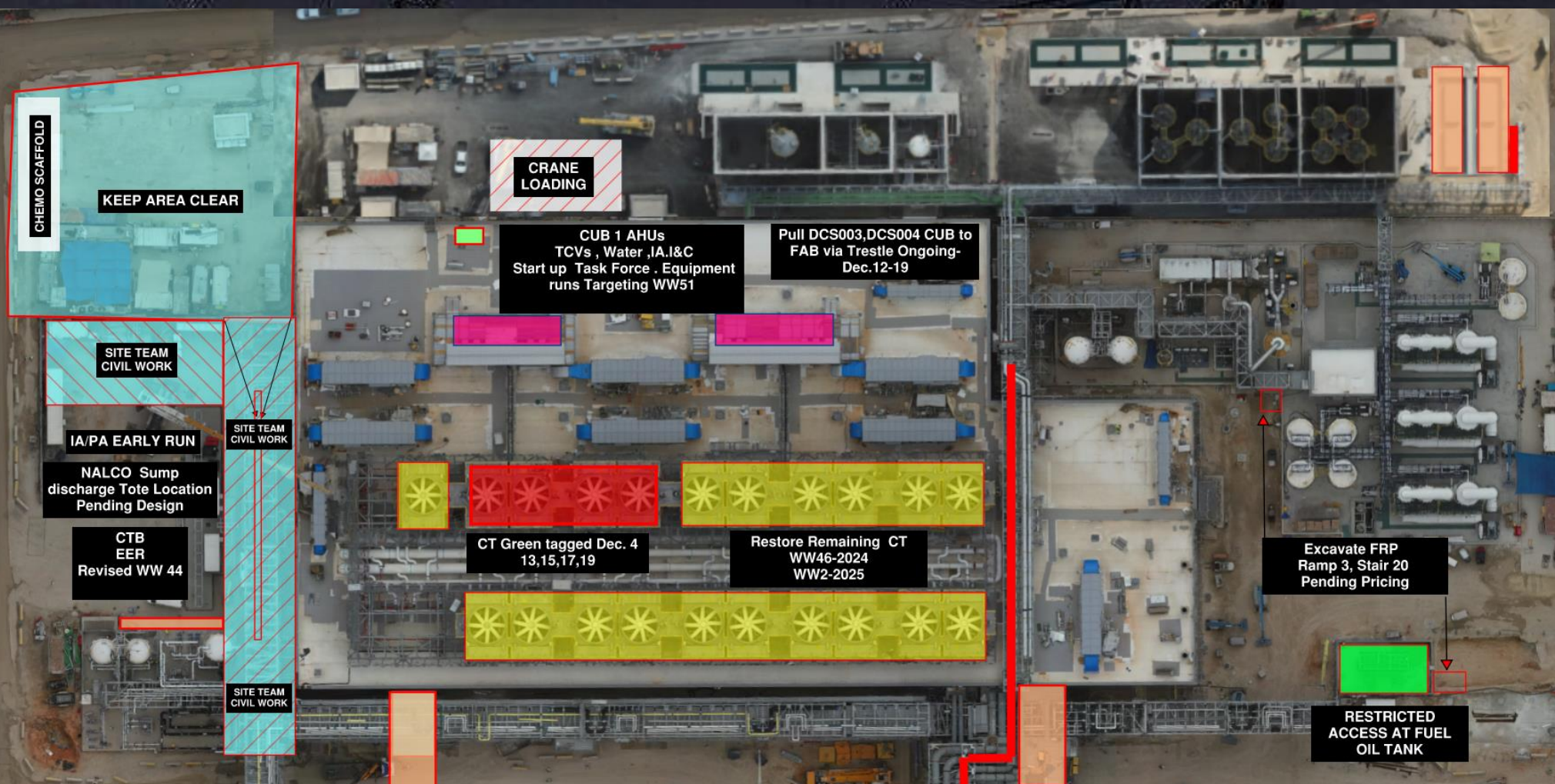


# CC3800 DEMOB WW51

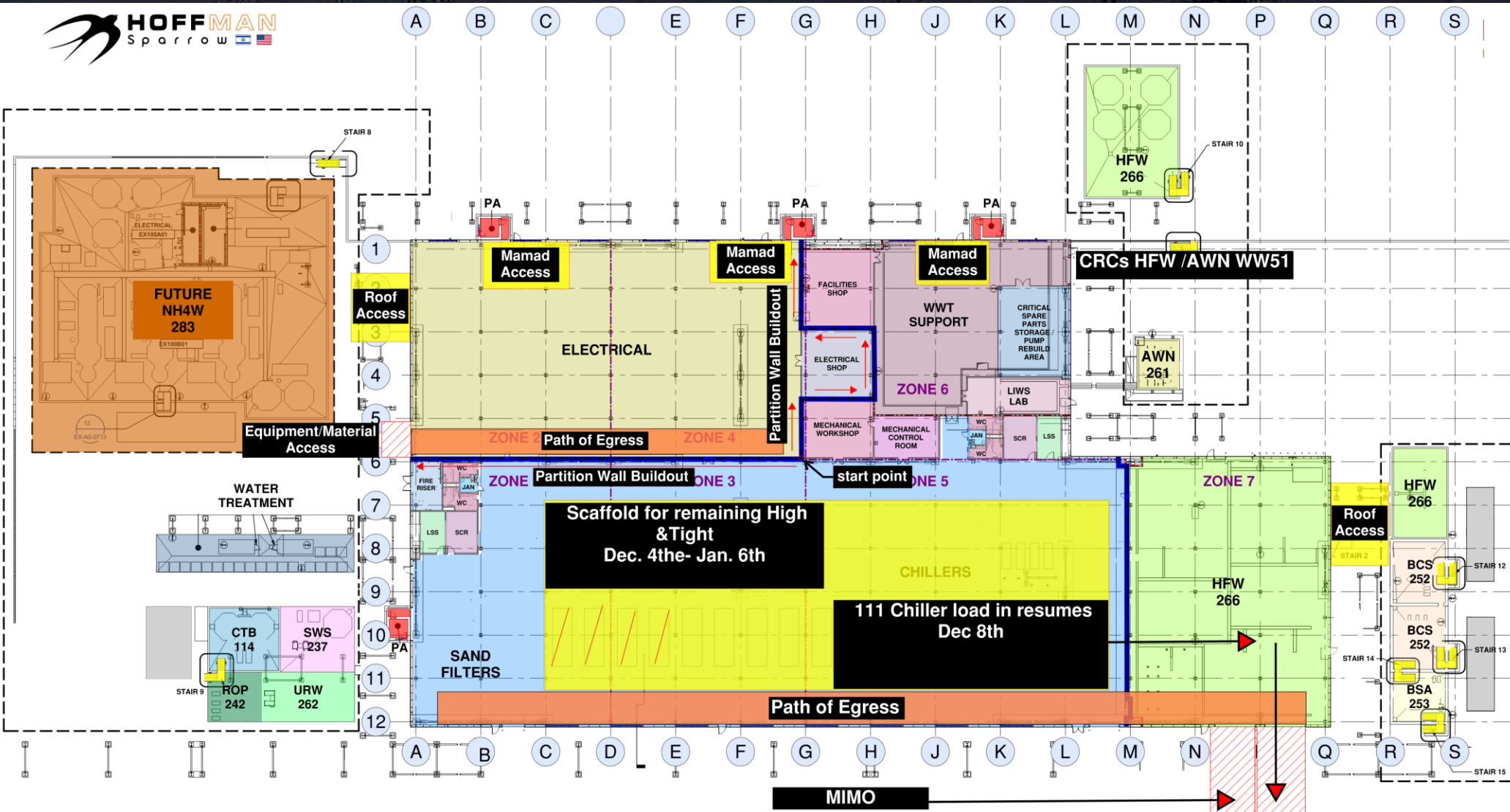


[illegible]

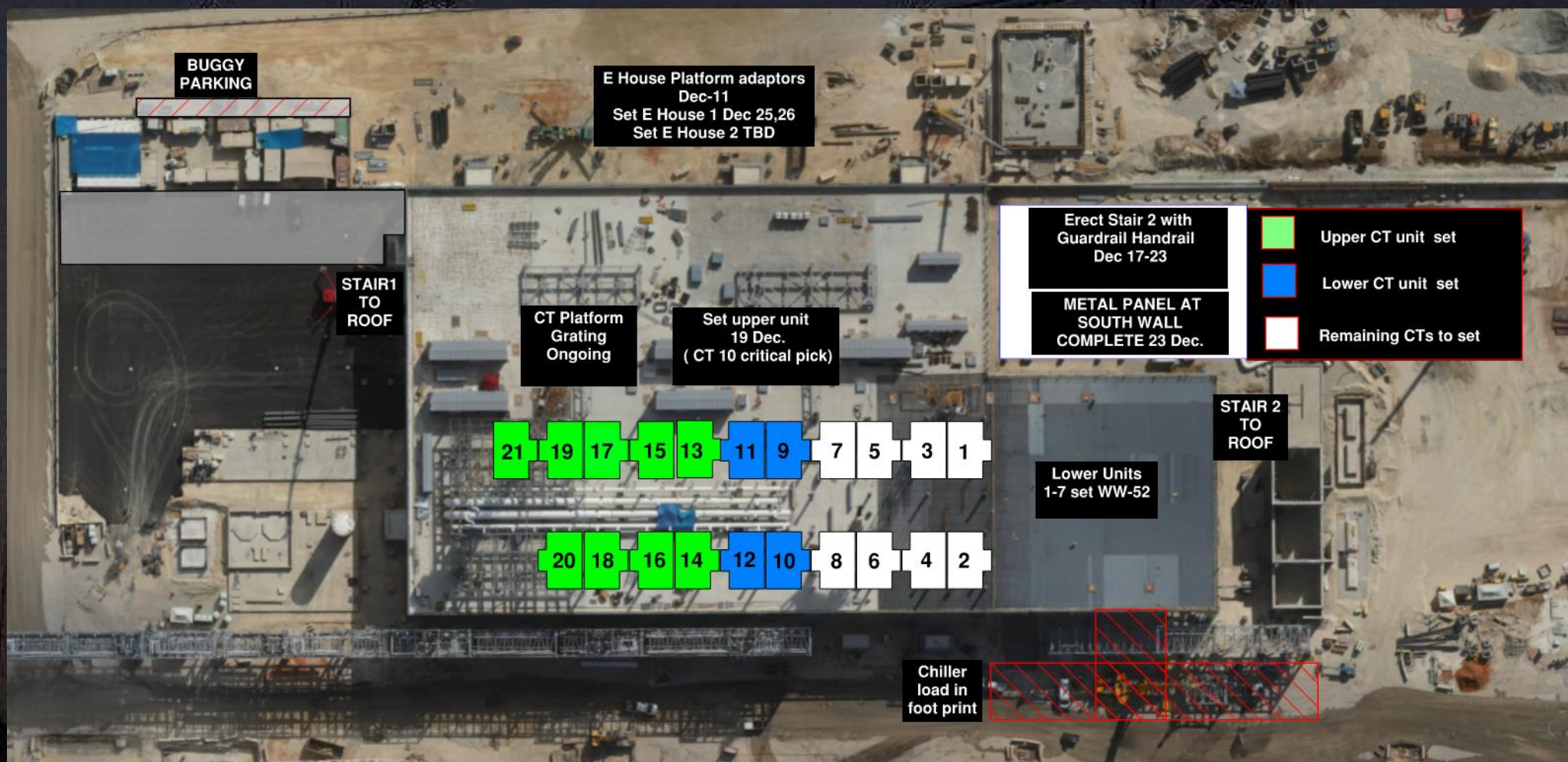
# CUB 1 – EXTERIOR/ROOF



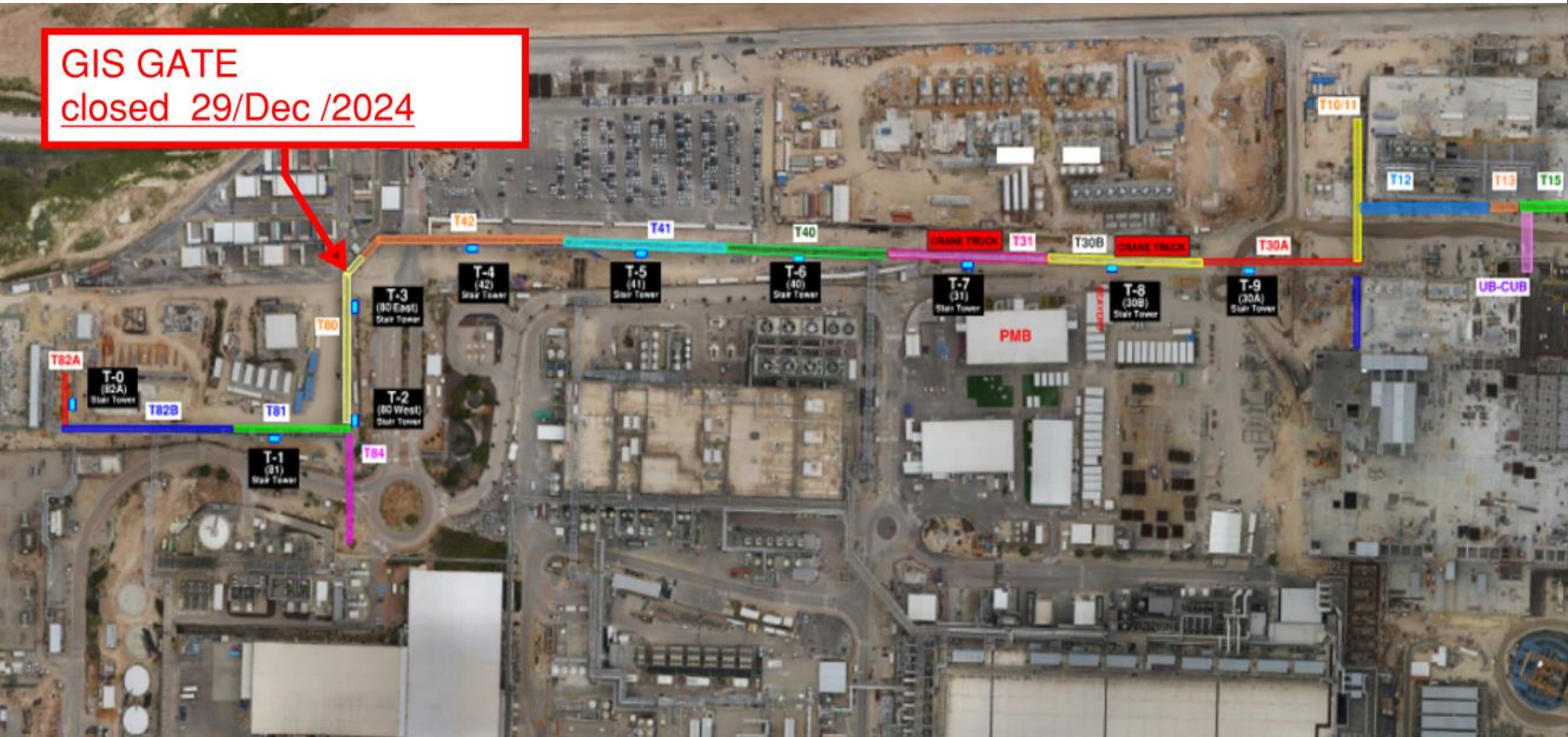
# CUB 2- Load in and H&T

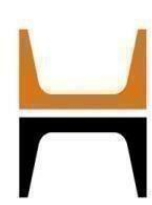


# CUB 2 – EXTERIOR/ROOF



**GIS GATE**  
closed 29/Dec /2024





**HOFFMAN CONSTRUCTION COMPANY**



**HOFFMAN**  
Sparrow  

**SUT**

**UB CUB - STAIRCASE DISMANTEL**

**24/12/2024**

**CUB**

**BGC - NDT**

Starting –Tuesday December 17<sup>th</sup> night at 19:00  
Finish Wednesday December 18<sup>th</sup> at 05:00am.

Starting –Wednesday December 18<sup>th</sup> at 19:00  
Finish Thursday December 19<sup>th</sup> at 05:00am

No impact on PMB  
entrance\Exit

Safety spotter

Safety spotter

Safety spotter



\*Truck will hold outside of Gate B for ~30 min. while Siemens attaches lifting Lugs\*

E House Deliveries  
00:00 to 01:00  
Arrival Time.

On Site Dates:  
1. Dec -11th  
2. Dec -17th  
3. Dec - 19th  
4. Dec - 24th  
5. Dec - 30th  
6. Jan - 2nd  
7. Jan - 7th  
8. Jan - 10th

Truck Turn  
Around

Tandem Mobile  
Offload 4,5,6

Sarens  
Offload  
1,2,3,7,8

E House  
Offload/Staging

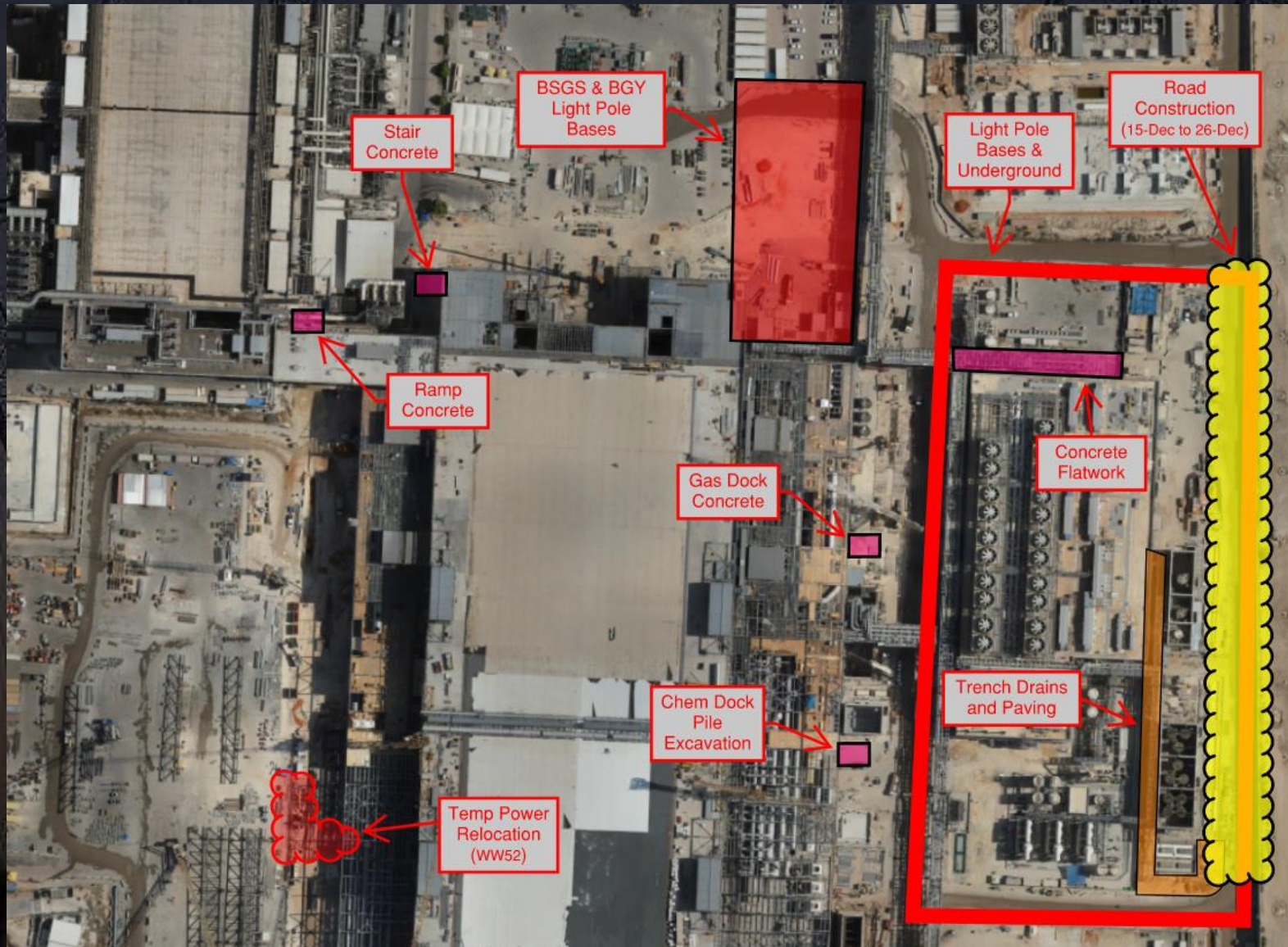
Intel Kiryat Gat

FAB-28

# Daily Coordination Meeting

## Site Logistics

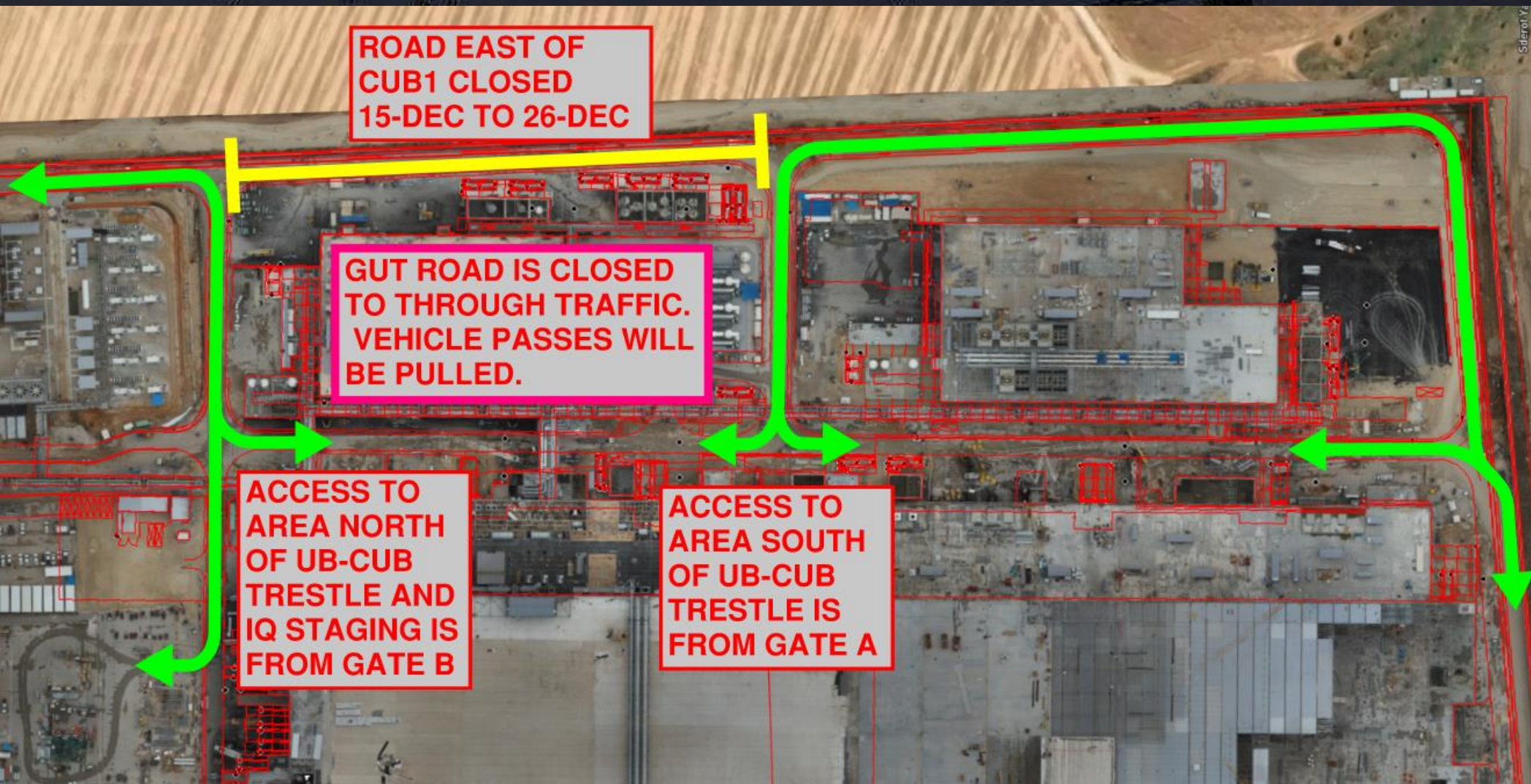
### North



# Daily Coordination Meeting

## Site Logistics

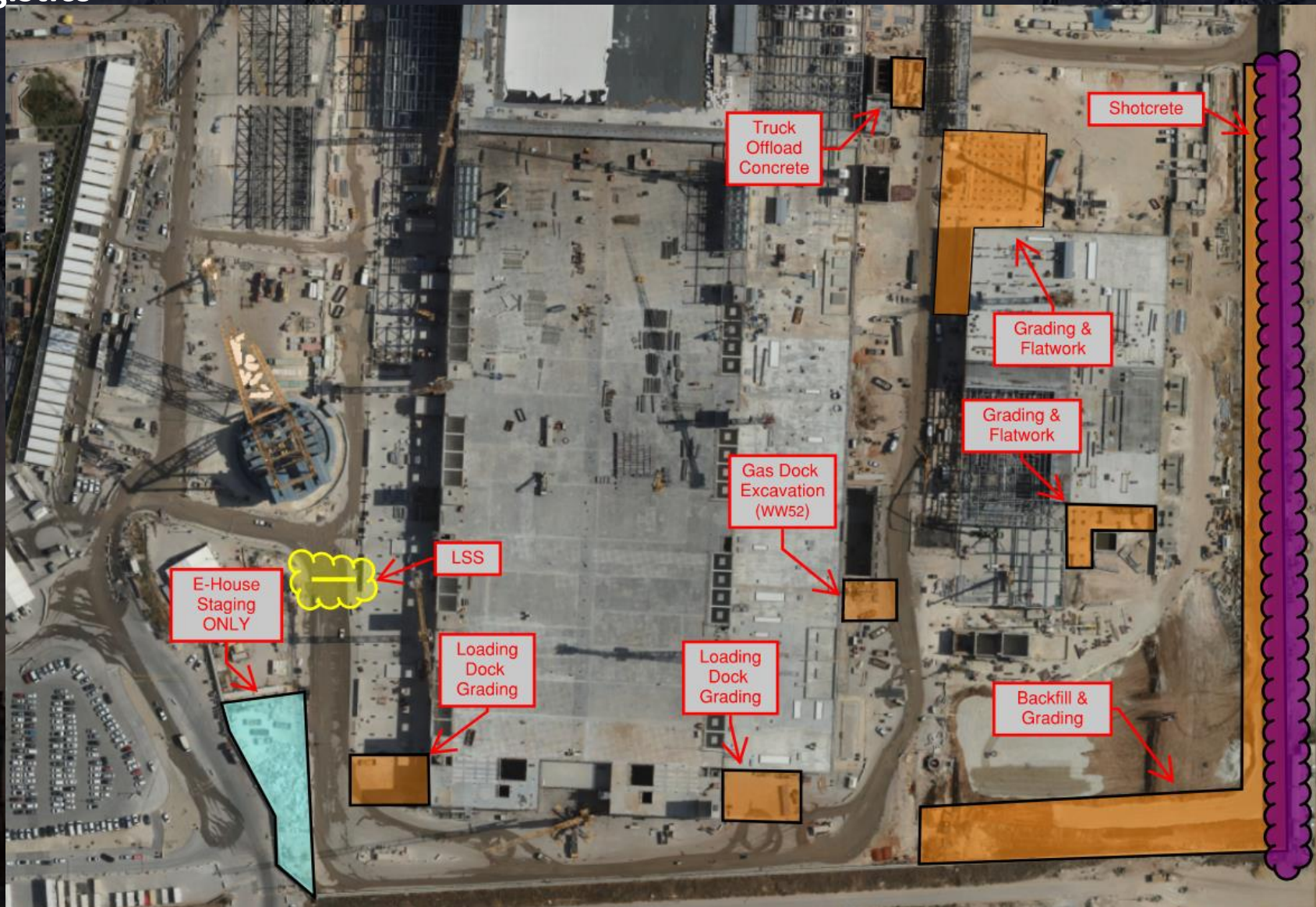
### East CUB1 Road Closure



# Daily Coordination Meeting

## Site Logistics

### South





# Communication/Information

As everyone knows, the requirement is to communicate all relevant information to the workers who are performing the work. The workers are the ones who need to receive information regarding changes on site, not the manager who is only in meetings and does not go out to the field.

The responsibility is yours. Every company representative here is here for a specific reason, and one of those reasons is the communication channel for information. You have dozens of ways to communicate information to the workers, and here are a few examples:

- A daily toolbox talk before starting work.
- A company WhatsApp group.
- The company's website.

Of course, there are many other ways to communicate information, but these are just a few examples. The important thing is that the information gets across, and it is everyone's responsibility to ensure that it does. This is the responsibility of everyone in this room.

# Daily Coordination Meeting



14:00 Sign In