

Daily Coordination Meeting

General Topics:

- Vehicle Passes – Changing to White Next Week
 - 0-50 = 0
 - 51-150 = 1
 - 151+ = 2





HOFFMAN CONSTRUCTION COMPANY



17 MILLION SAFETY
WORKING HOURS
BBQ LUNCH!!!

16.07.2024





LUNCH WILL BE SERVED IN 4 DIFFERENT SHIFTS.
EACH SHIFT WILL HAVE A SPECIFIC WRIST BAND COLOR
(WILL BE PROVIDED BY THE SAFETY TEAM)

11:30 - 12:15 GROUP A (BLUE)
12:15 - 13:00 GROUP B (GREEN)
13:00 - 13:45 GROUP C (YELLOW)
13:45 - 14:30 GROUP D (ORANGE)
21:00 NIGHT SHIFT

See next page
for GROUP shift hour



LOCATION AND ENTRANCES
FULL PPE REQUIRED WHILE
WALKING THROUGH JOB SITE!!!

- *Group shift will be updated



A.S Barzel	A
Afcon Contracting Services	
Afcon Control and Automation Ltd	
Avi Cranes	
BCT PIPELINE PROCESSES LTD	
BRAND INSUSTRIAL LTD	
ByNet System Application Ltd	
Hoffman Structures of America, Inc	

Carmel Bidud LTD (FAB + PSSS)	C
CHEMO AHARON LTD (FAB)	
COMBE LTD	
D&P Clean Room Ltd	
Derech Afar LTD	
DVIR.IE LTD	
E.L Fireproof LTD	
ELECTROSAFE LTD	
Electra Elevator	
EL-MORE ELECTRIC	
ELRAM PROJECT LTD	
ETC Systems LTD	
ES Entry Systems LTD	
GLOBUS WORLDWIDE LOGISTICS	

Hoffman Construction	B
Stage Design Ltd	
Talad T.S LTD	
TEAM3 LTD	
TM TEAM LTD- Job service	
TM TEAM LTD	
TZUR ESH PROJECTS LTD	
W&W - AFCO Steel LLC	
INTEL	
JACOBS	
HB	
QA- AMTS, Q+,DPS	

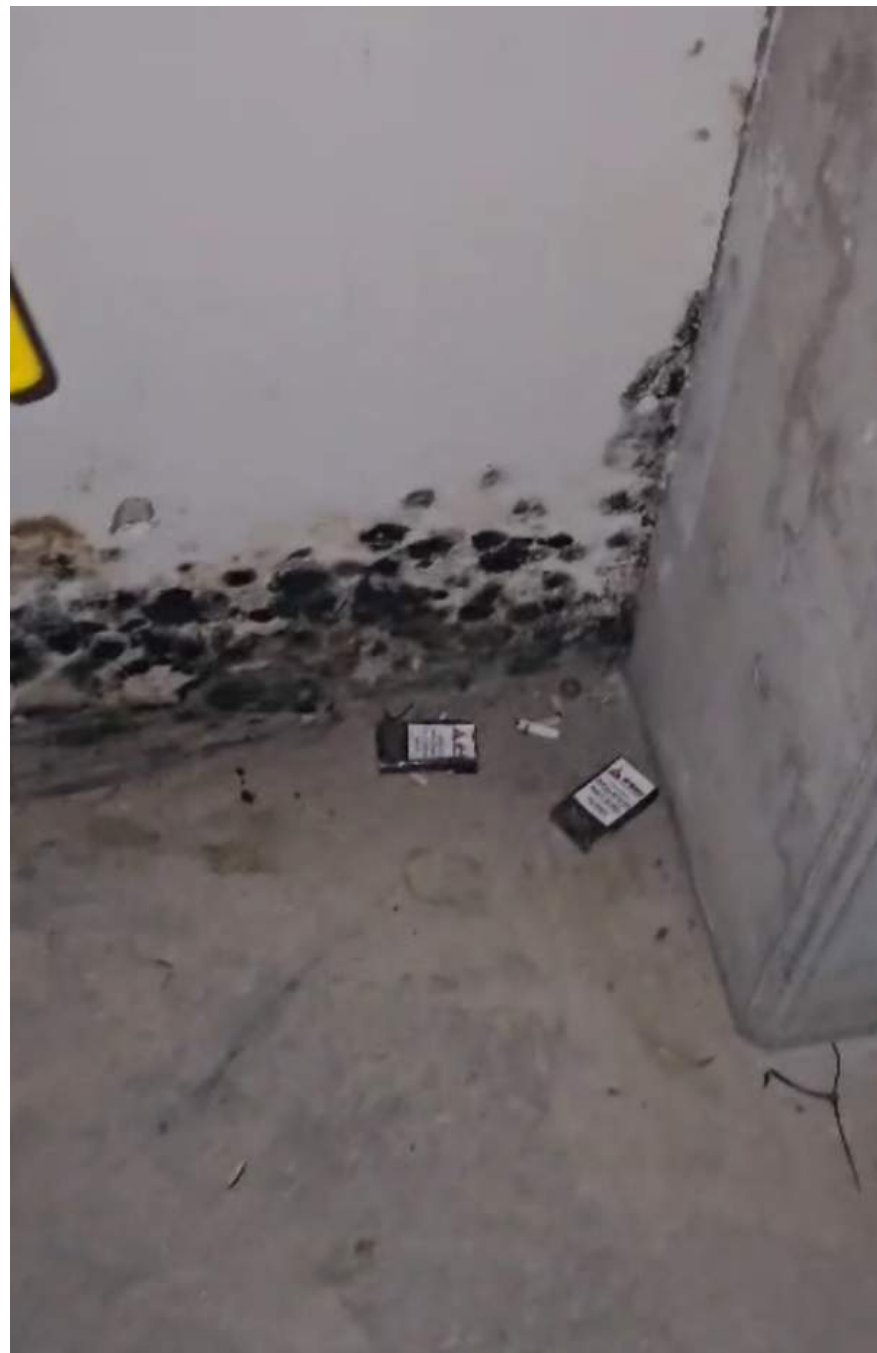
HYG STEEL 1990 LTD	D
Katz Arie Stainless Steel	
Lesico LTD	
MALCHIMIM BADAROM	
MEGASON ELECTRONIC & CONTROL 1987 LTD	
Meptagon LTD - I&C/ LSS	
Newco - Tec LTD	
Olizki Infrastructures LTD	
ORIAYN ADVANCED TECNOLOGY SYSTEMS, LTD	
Pach Taas LTF (Ashkelon)	
Ranpro LTD	
RESHATOT BE'ER SHEVA LTD	
Rolling Plains Constriction Inc	
Sami Najami Engineering & Project LTD	
Sela Industrial Maintenance 2006LTD	
Shuv Eli Electric Engineering Ltd	
Siemens Industrial LTD	
SIG Industrial LTD	
SK ENGINEERING & PROJECT (CUB)	
Skyline Cranes& Technologies	



HOFFMAN CONSTRUCTION COMPANY



Please email me to sign up to Volunteer to serve
Rebecca-WeinsteinAttar@Hoffmancorp.com &
Cody-Baumann@Hoffmancorp.com

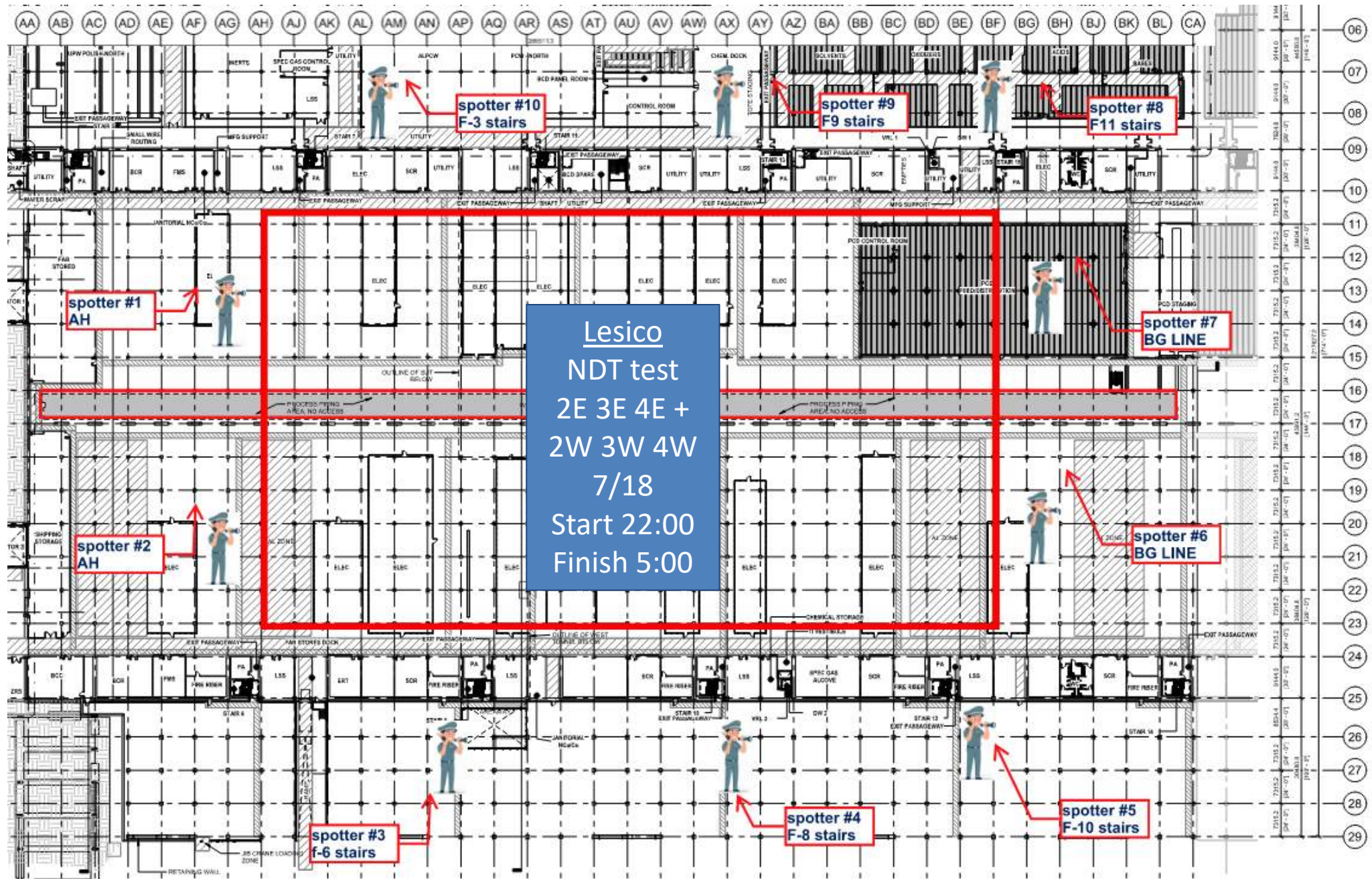




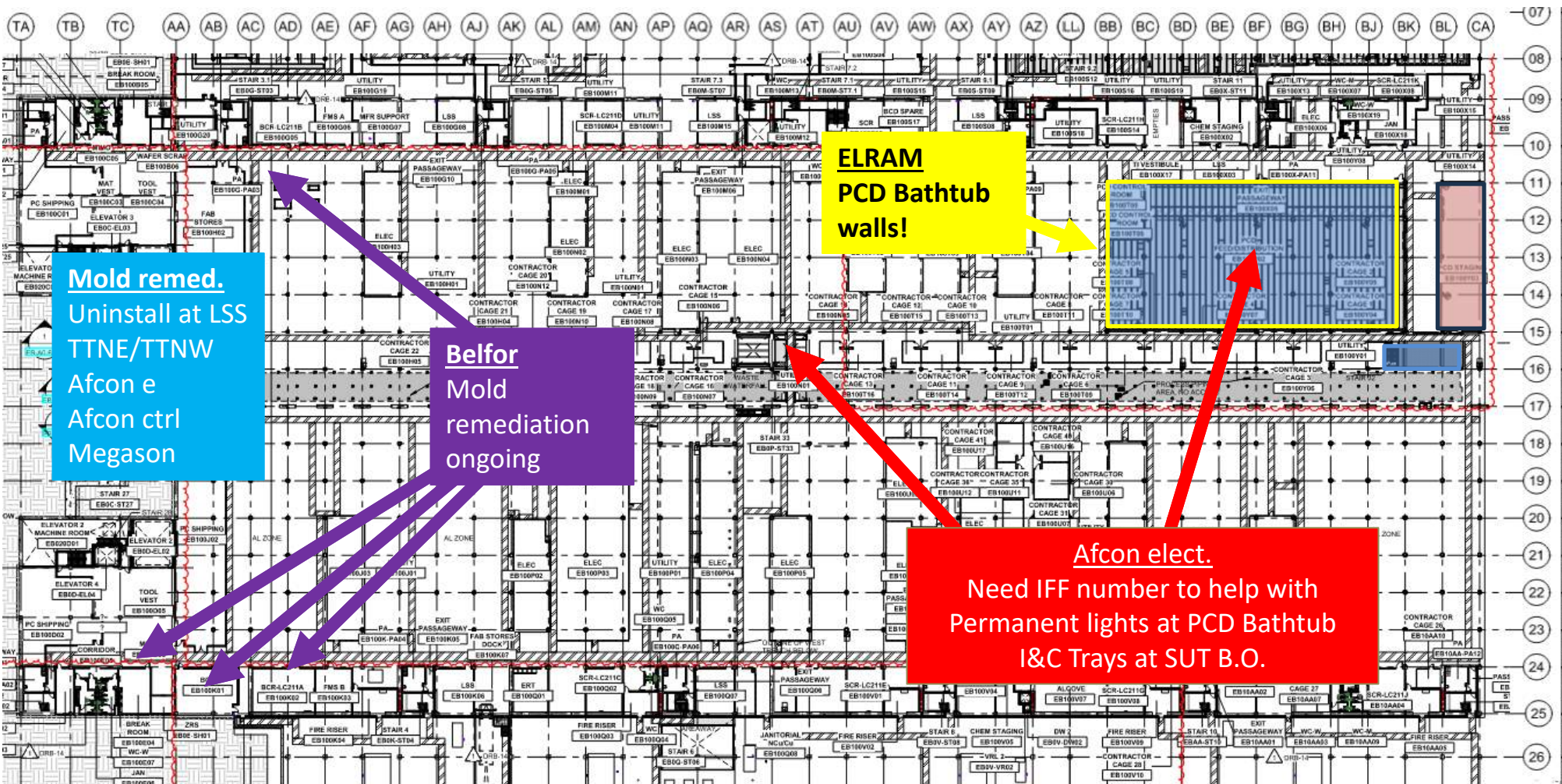
M.B
Pneumatic test
3E + 3W
7/16
Start 17:00
Finish 22:00

3E
3W

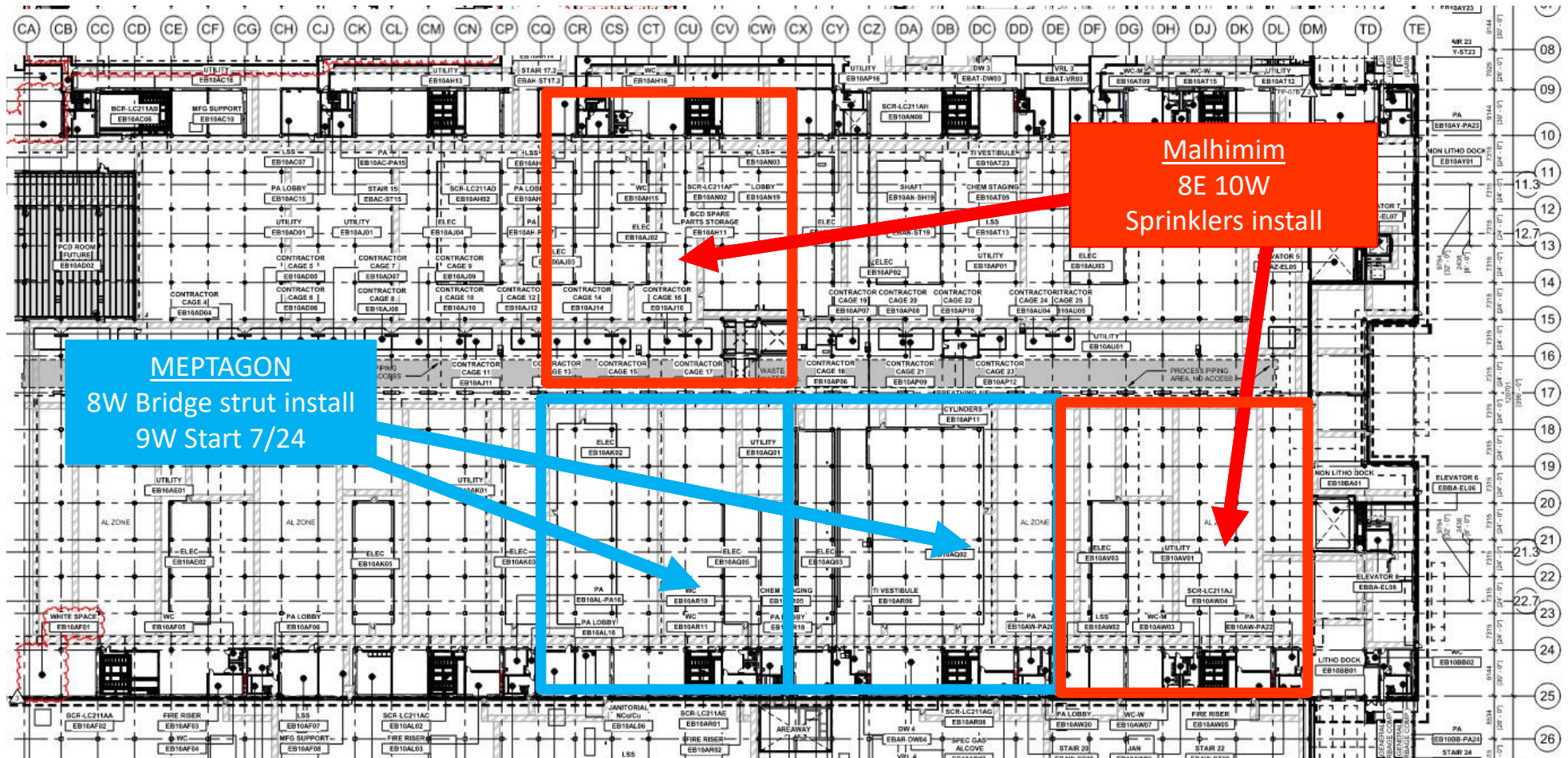
UTILITY LEVEL MOD1



UTILITY LEVEL MOD1

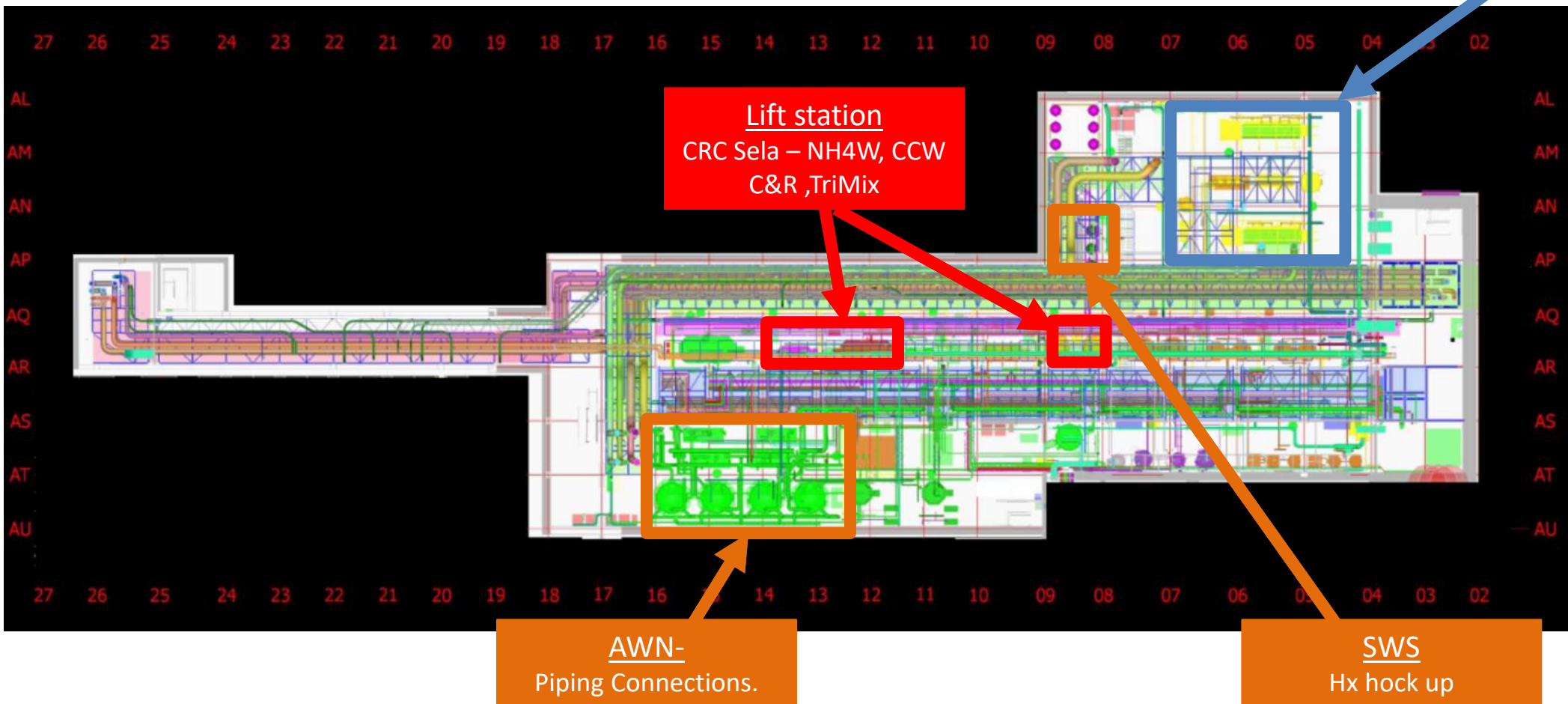


UTILITY LEVEL MOD2

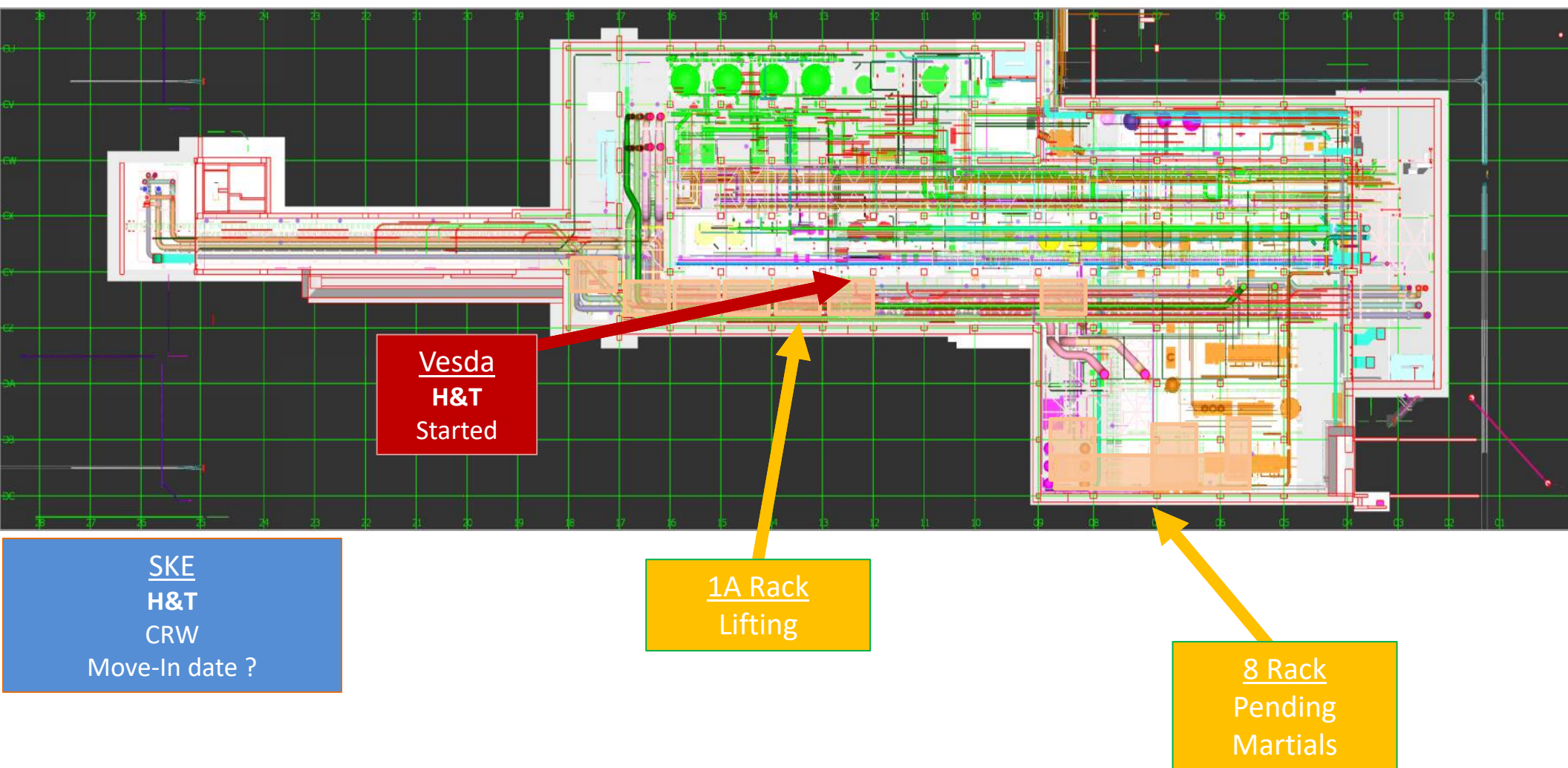


SUT 38.1 LEVEL

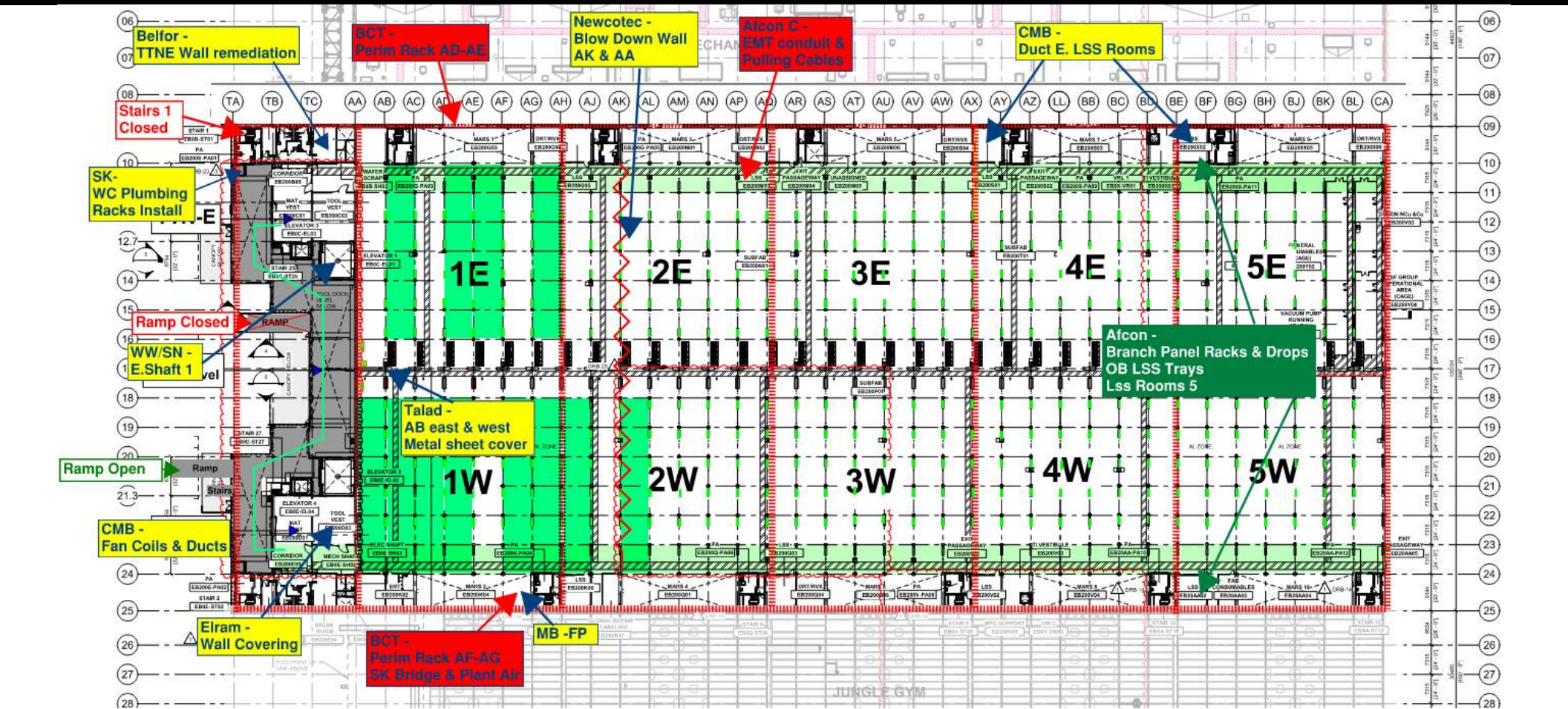
SKE
Safety shower's
Need Bulletproofing



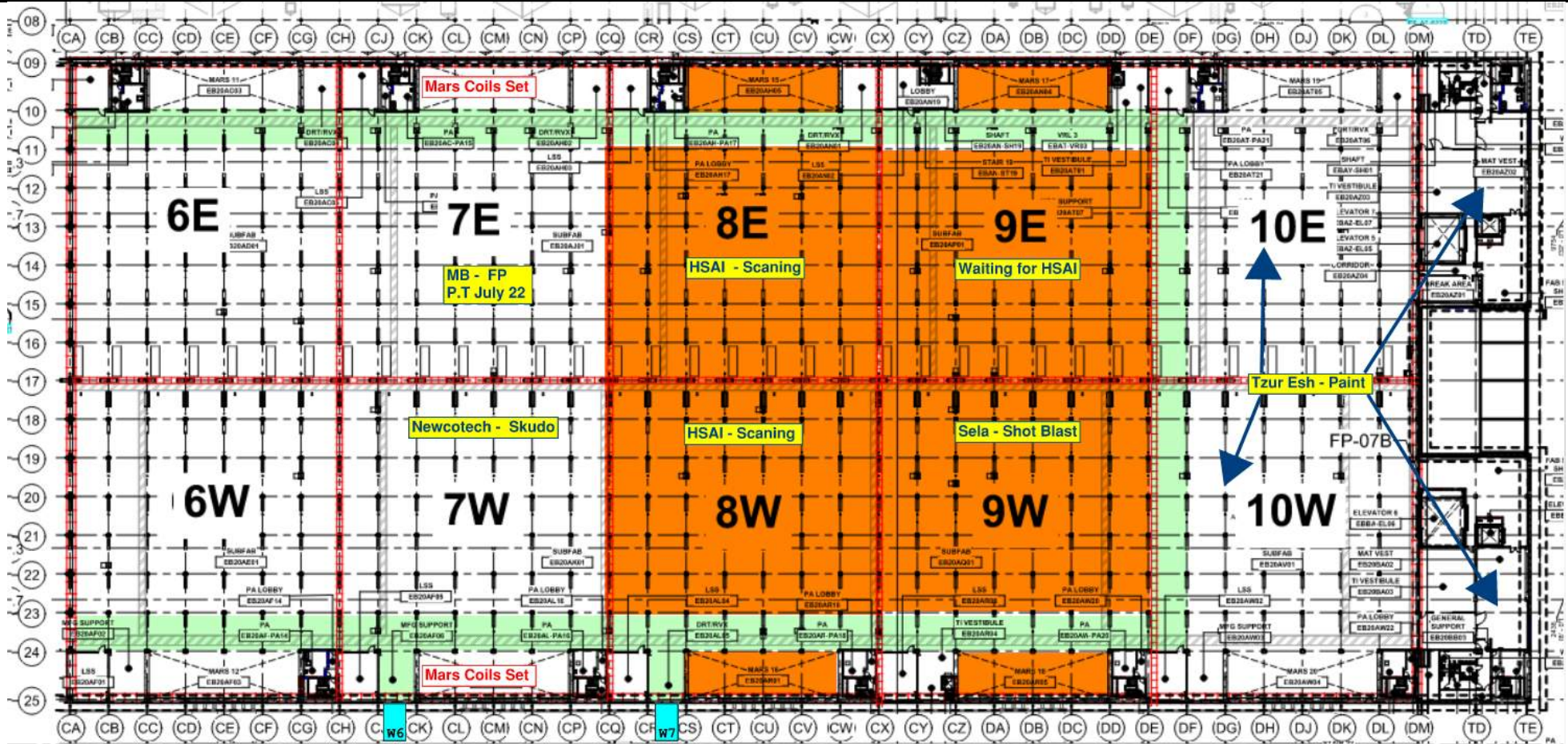
SUT 38.2 LEVEL



SUBFAB BUILDOUT MOD 1



SUBFAB BUILDOUT MOD 2

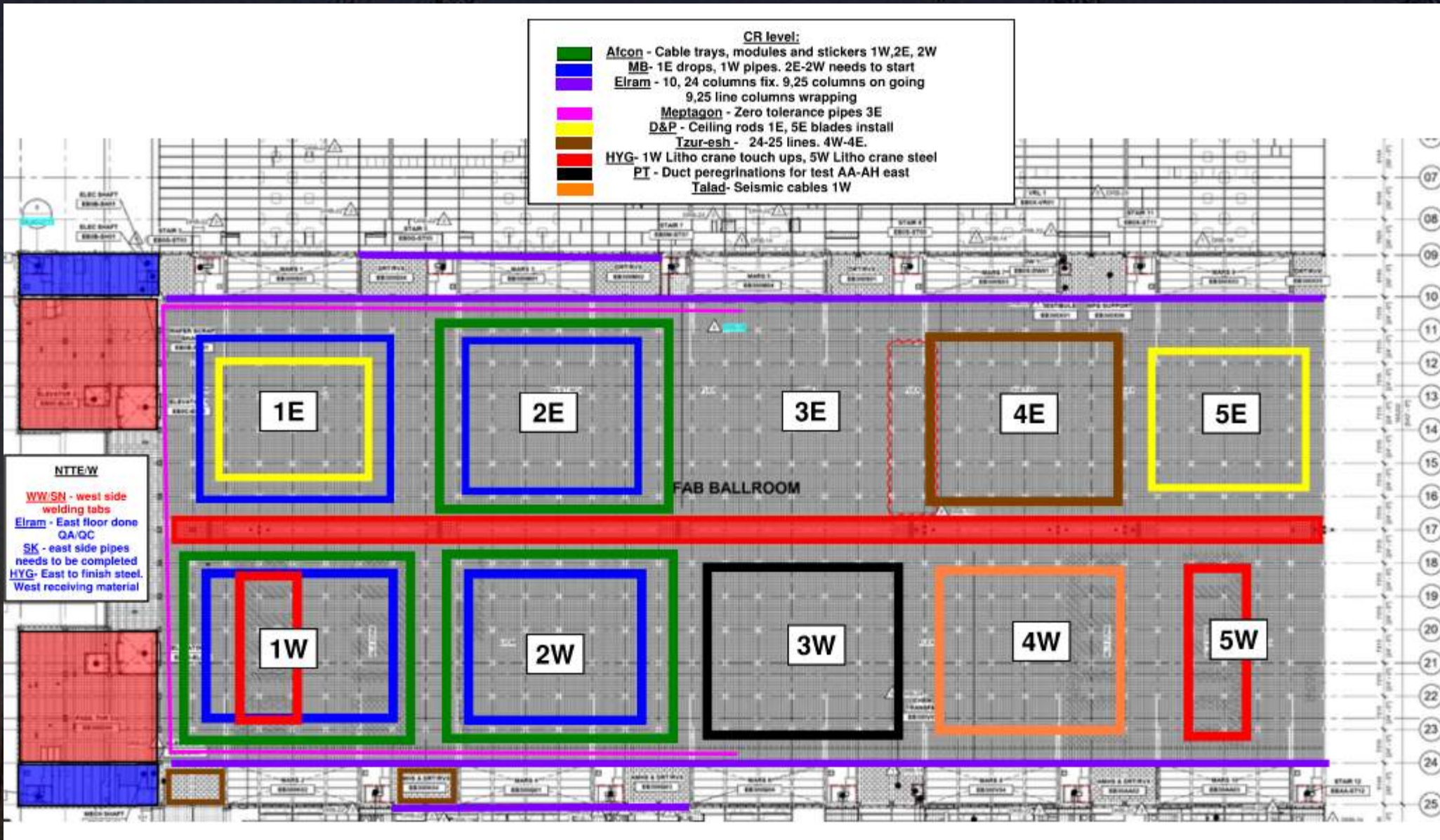


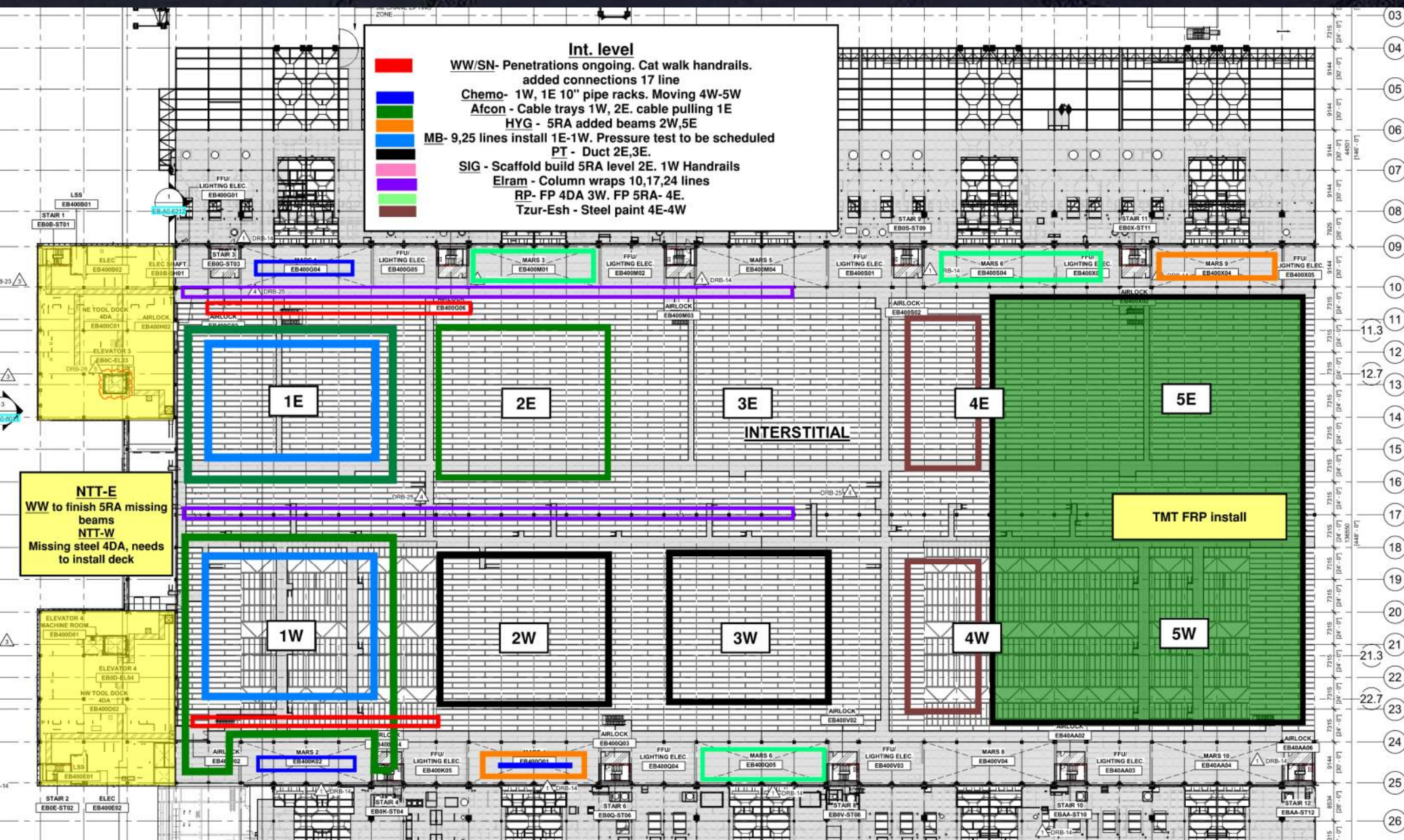
SUBFAB 17 Line Outboard Metal Sheet Cover

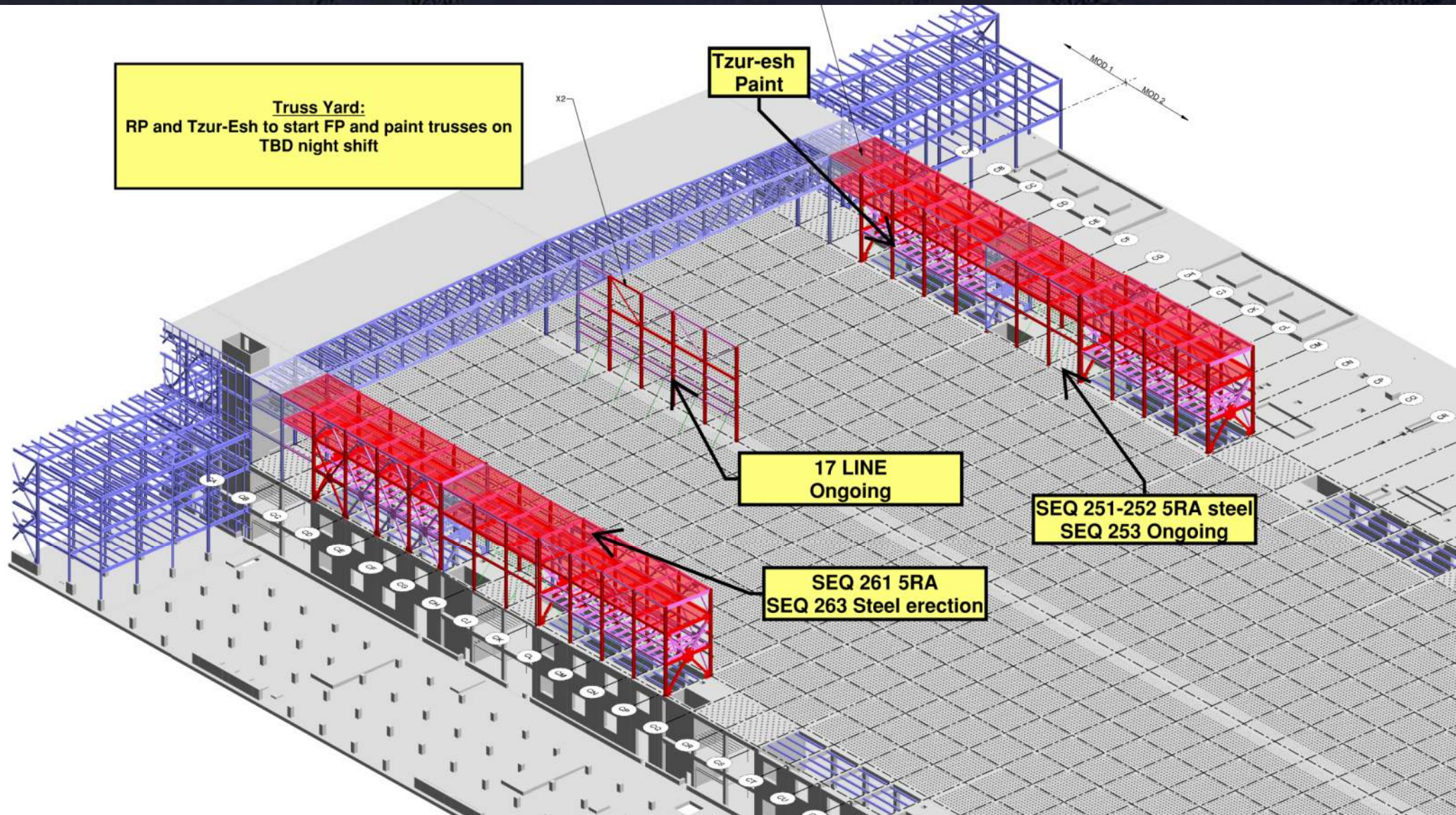


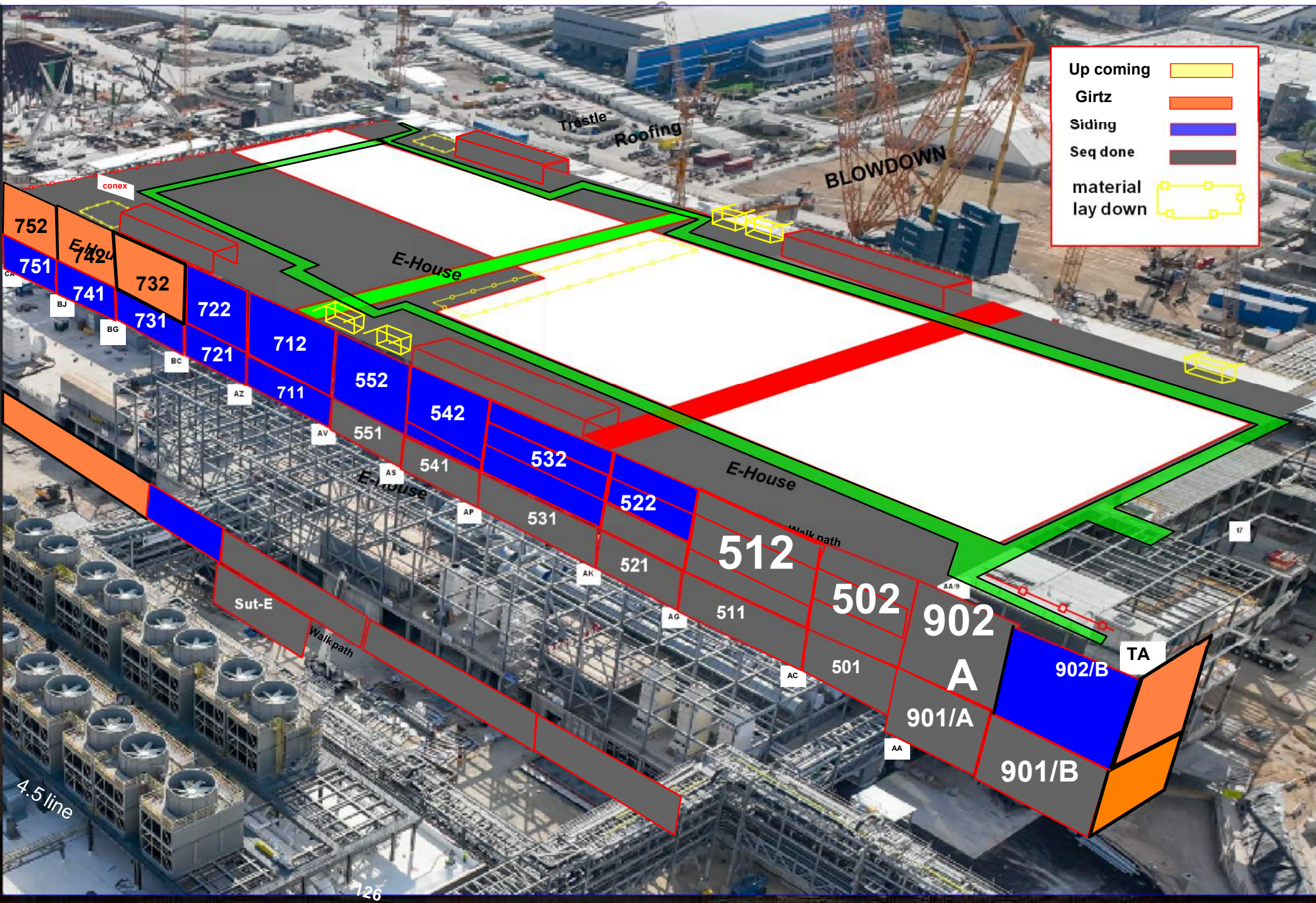
SUBFAB 17 Line Outboard Metal Sheet Cover

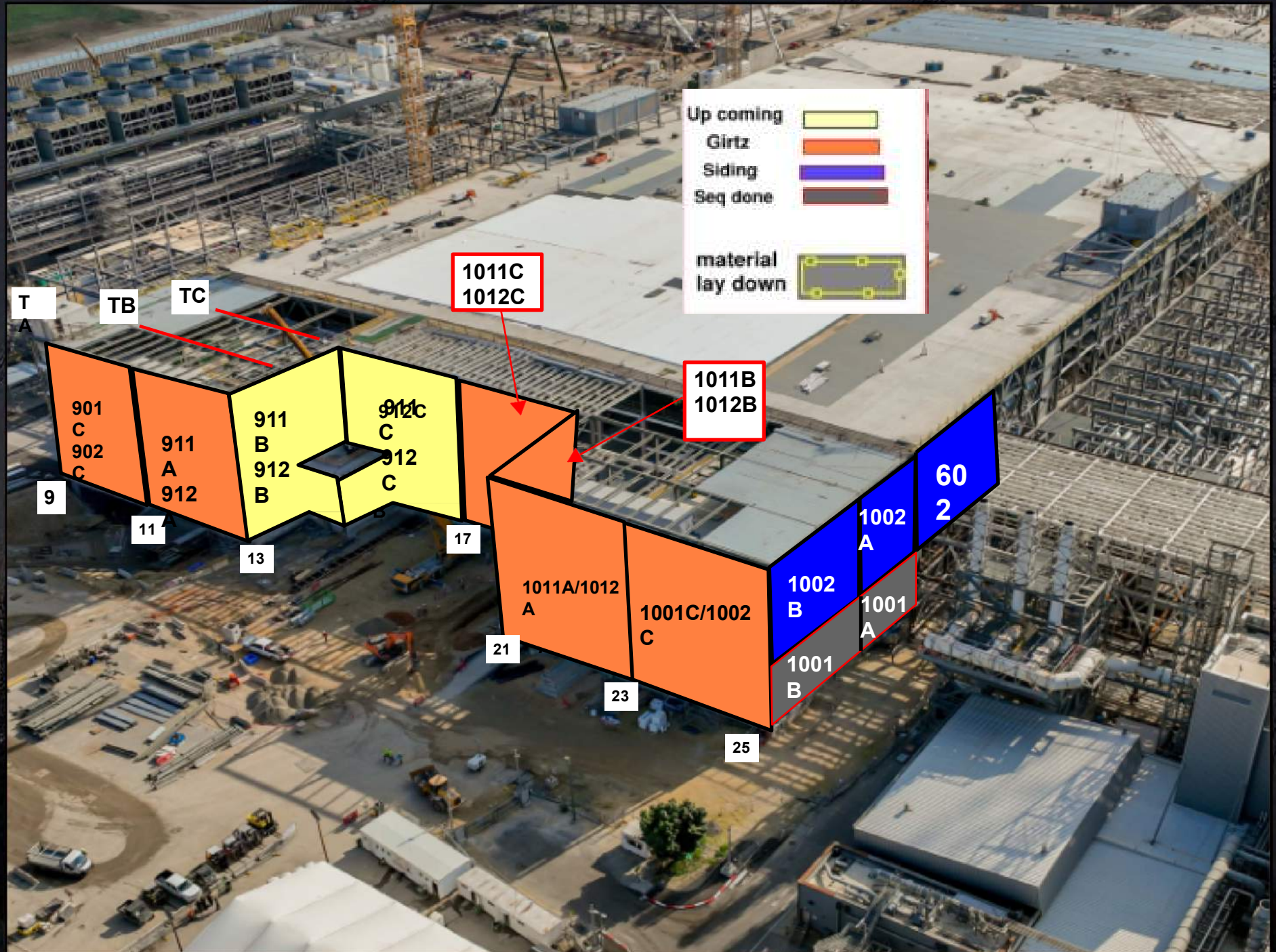


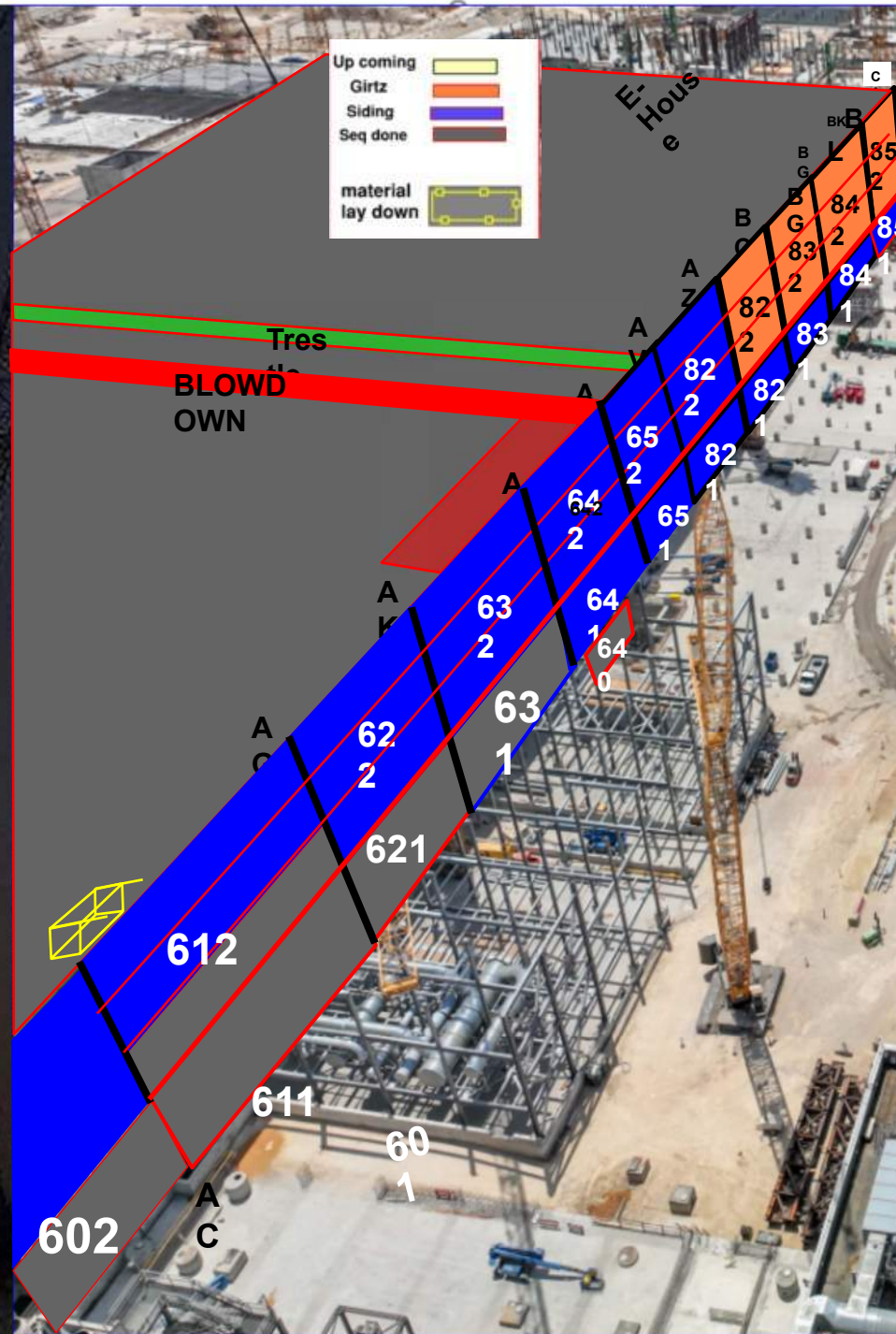








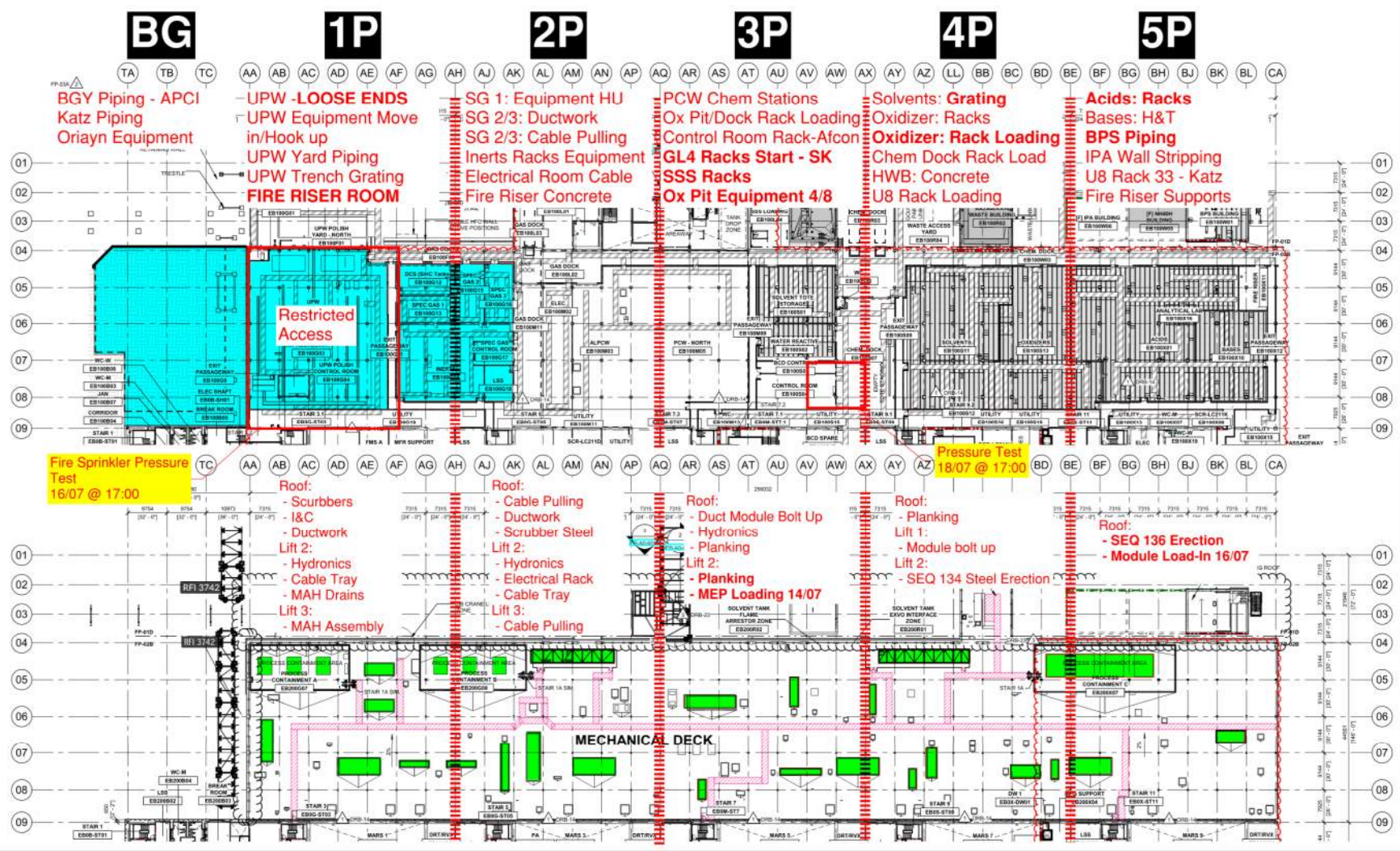




PSSS.1

Utility Level
1YA

PSSS Roof
2SA

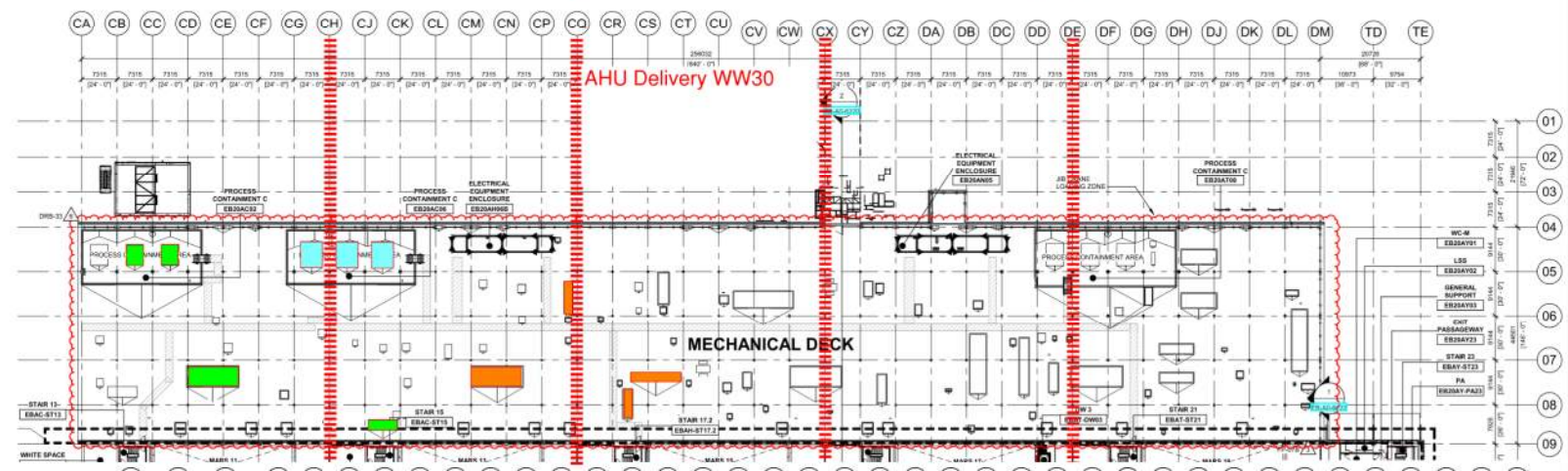


PSSS.2

Utility Level
1YA

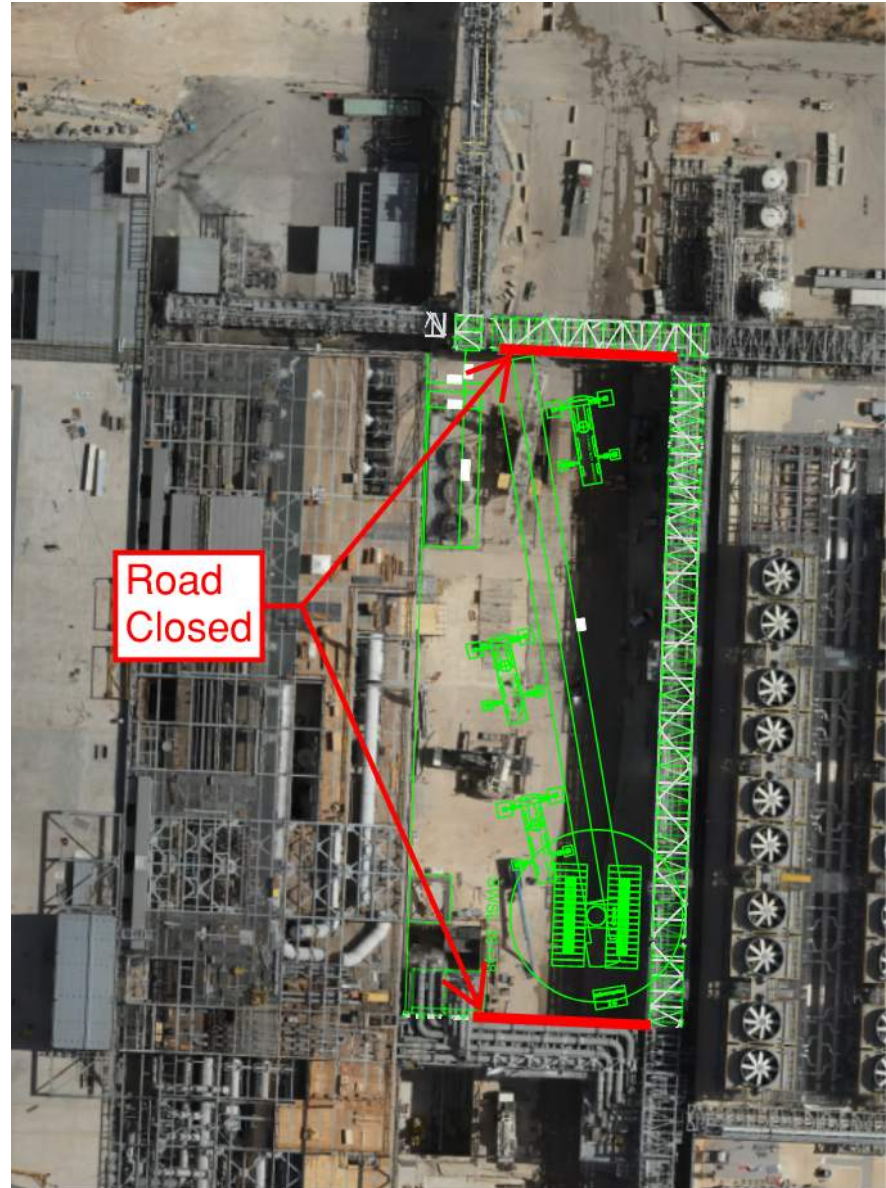


PSSS Roof
2SA

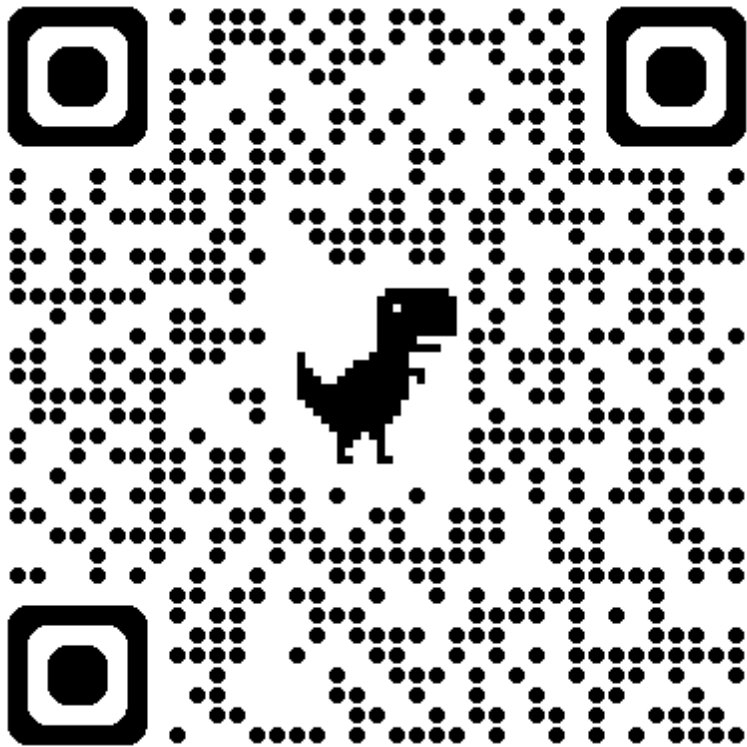


PSSS DMAG DISMANTLE

- July 21st-25th
 - UPW MIMO CLOSED
 - GAS MIMO CLOSED
 - GUT ROAD BLOCKED FROM TRESTLE BRIDGE TO TRESTLE BRIDGE



EJG/WJG Grating/Planking Penetrations



JG Grating/Planking Penetrations

Type of Penetration *
What side of the building is the penetration located?

Location of Penetration *
Provide gridlines of where the penetration is needed

Zone of Penetration *
What zone is the penetration

Lift of Penetration *
What lift of Steel is the penetration

Gridlines of Penetration *
Input the gridlines of where the penetration is located

Size of Penetration *
Put size of penetration required in mm

Contact Company *

Contact Number *
Contact number in the case of questions

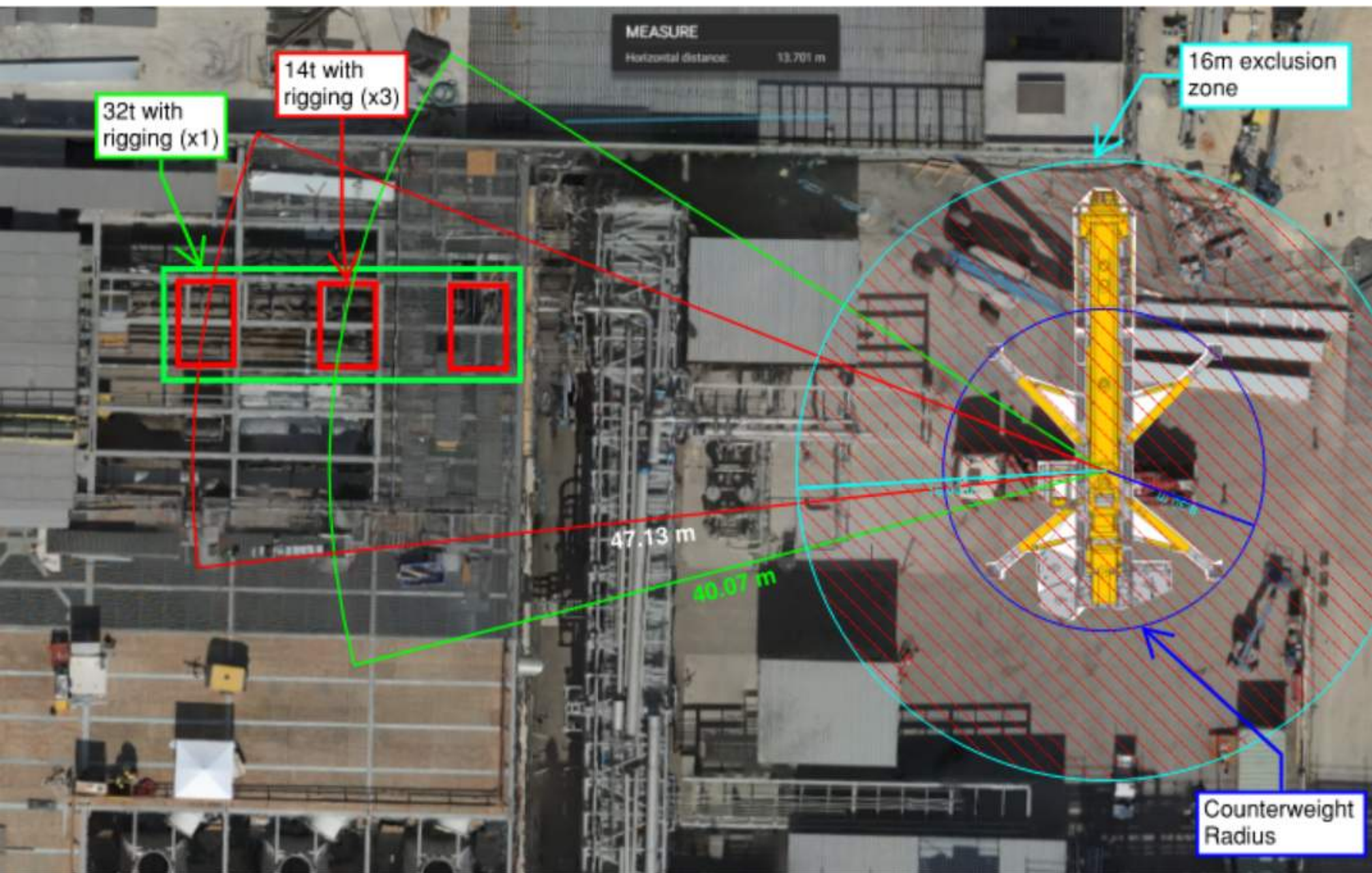
Contact Email *
Email of person to get notifications on penetration

Layout Confirmation *
Confirmation that layout has been confirmed by requesting contractor. If layout is incorrect, the requesting contractor will be responsible for all fixes, build backs, replacement, etc. cost associated with the incorrect layout.
☐

Photo of Layout in the field *
Upload a photo of the layout once complete

Drag and drop files here or [browse files](#)

☐ Send me a copy of my responses





WJG 01J, 02J LIFT 2 & 3



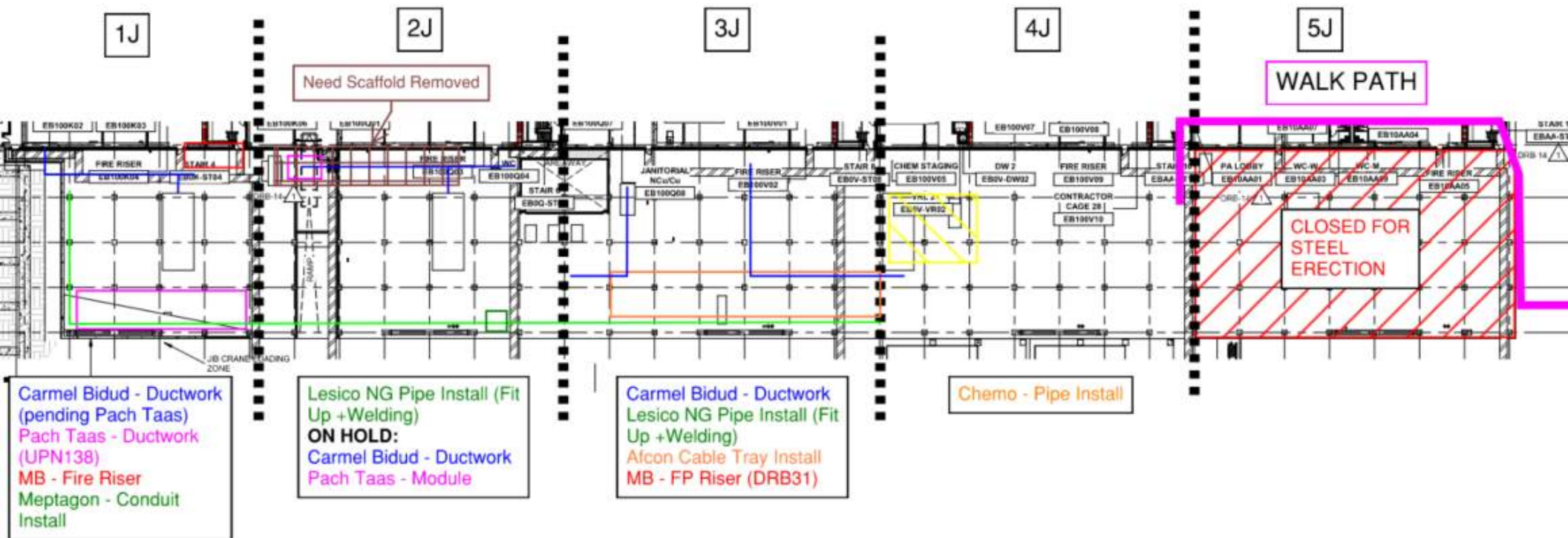


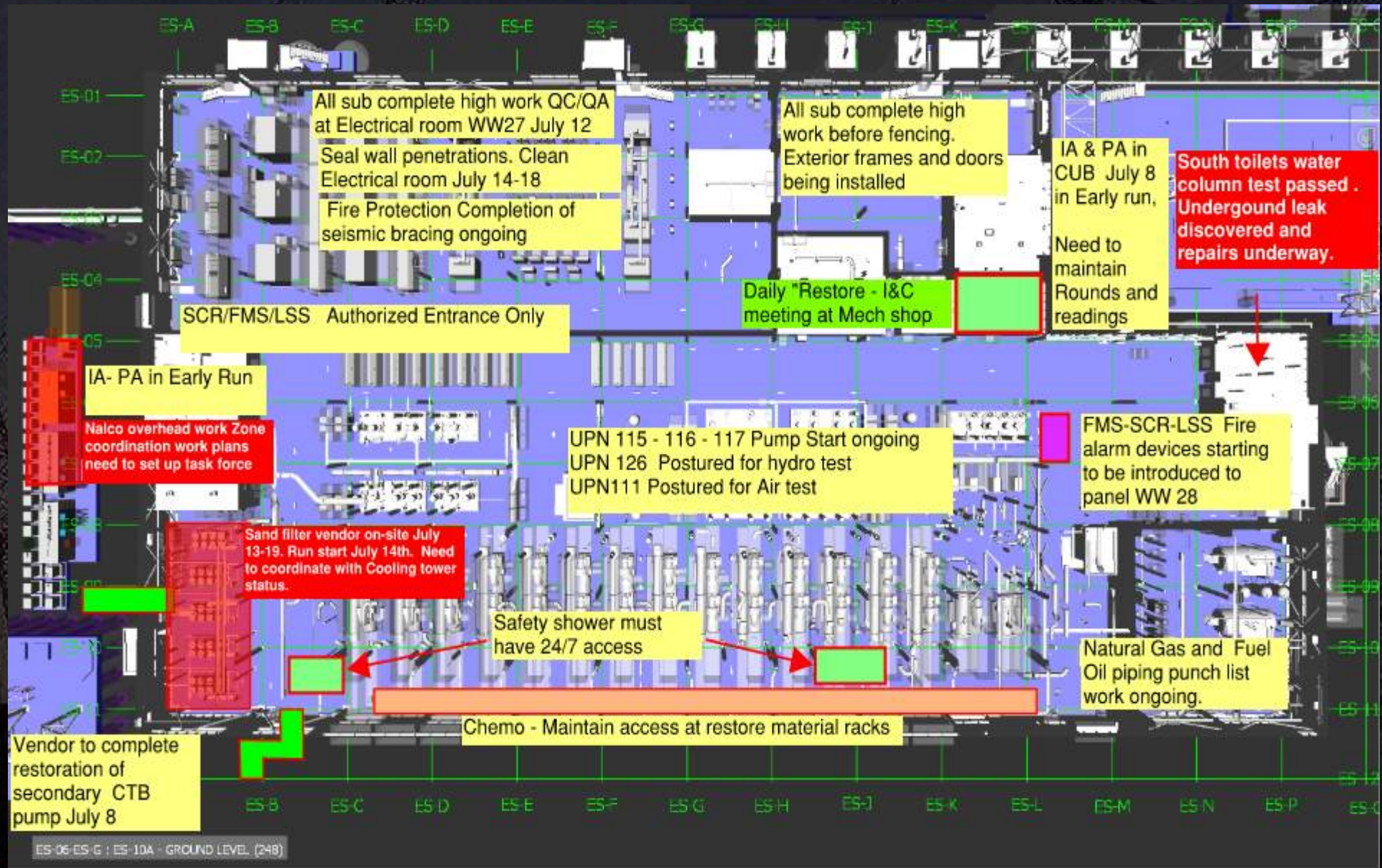
WJG 03J, 04J, 05J LIFT 2 & 3

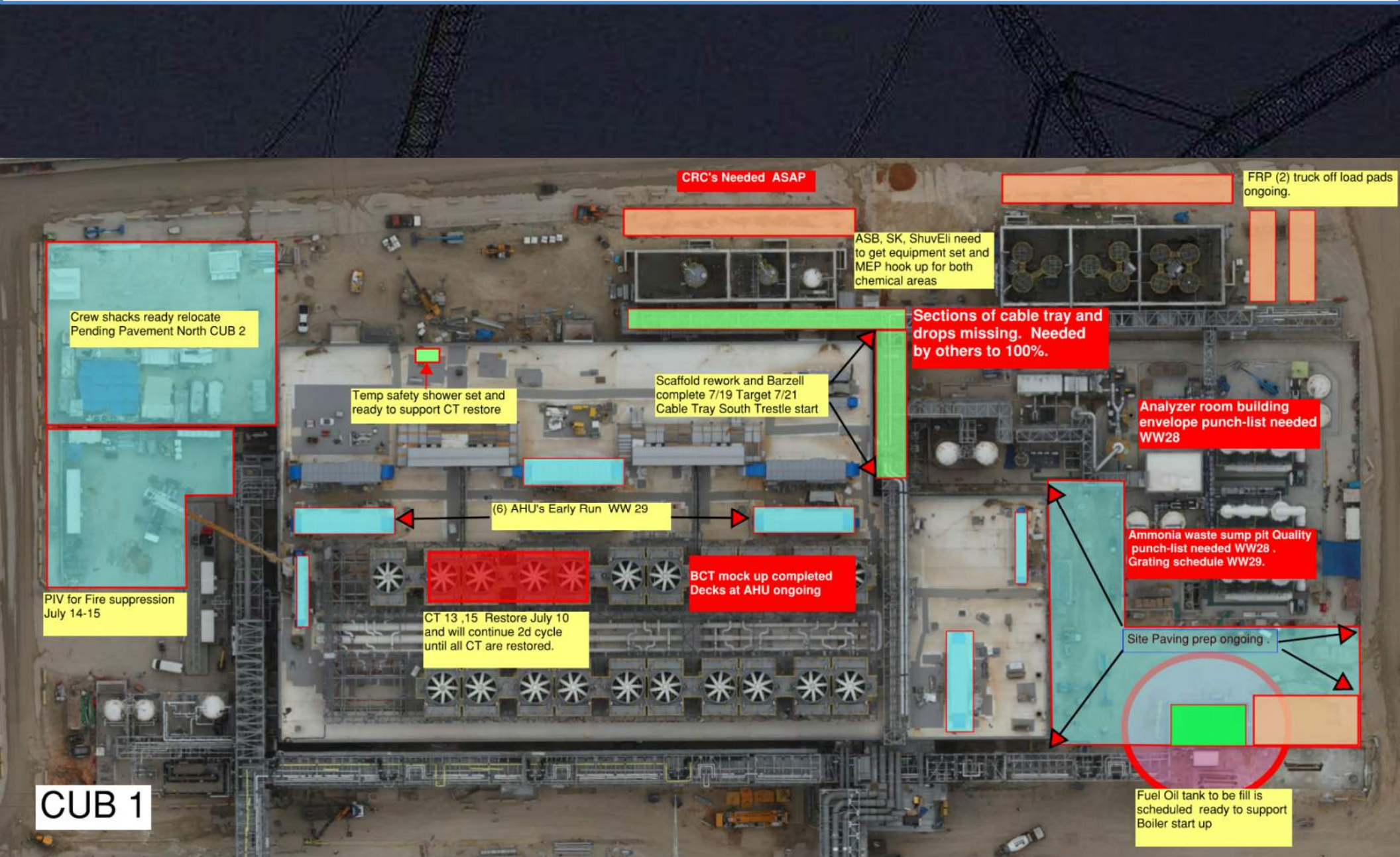


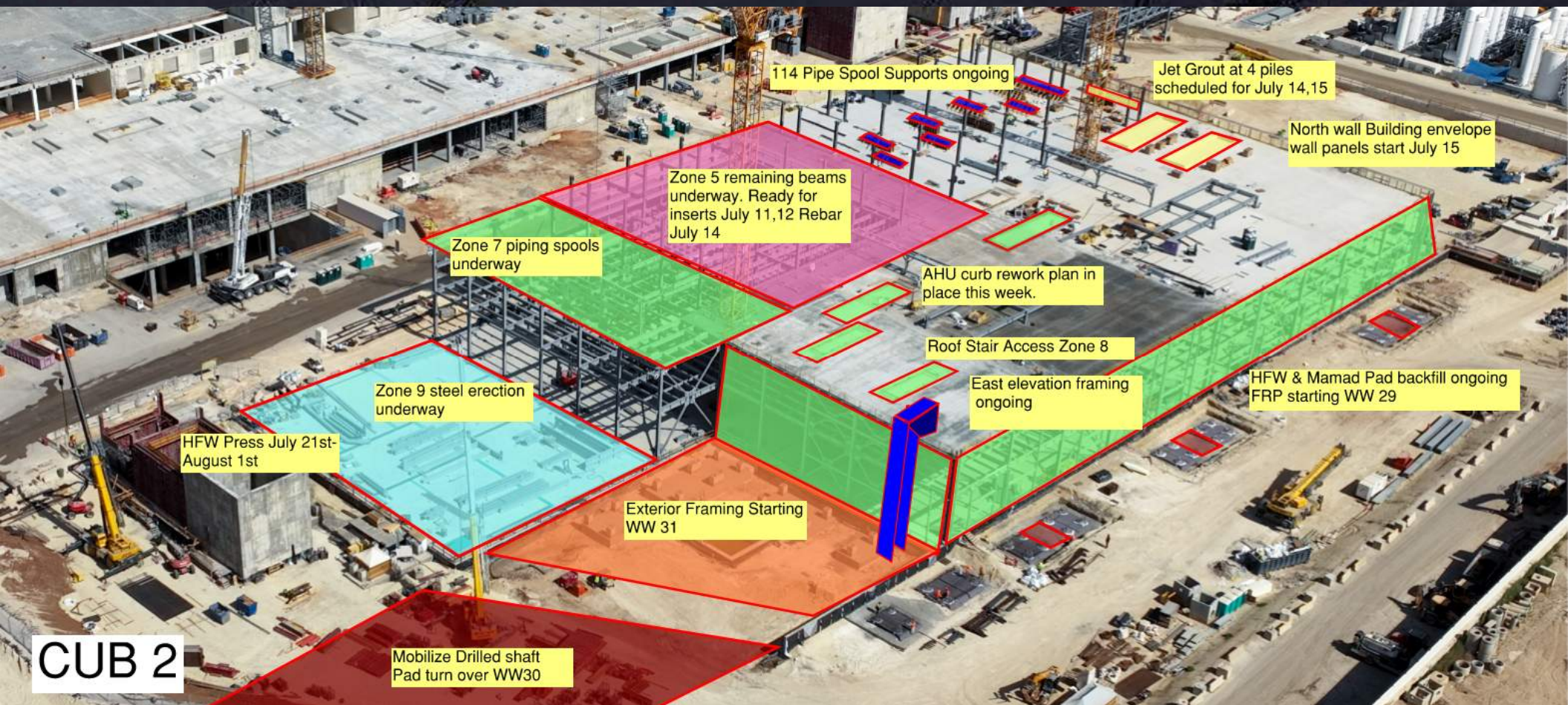


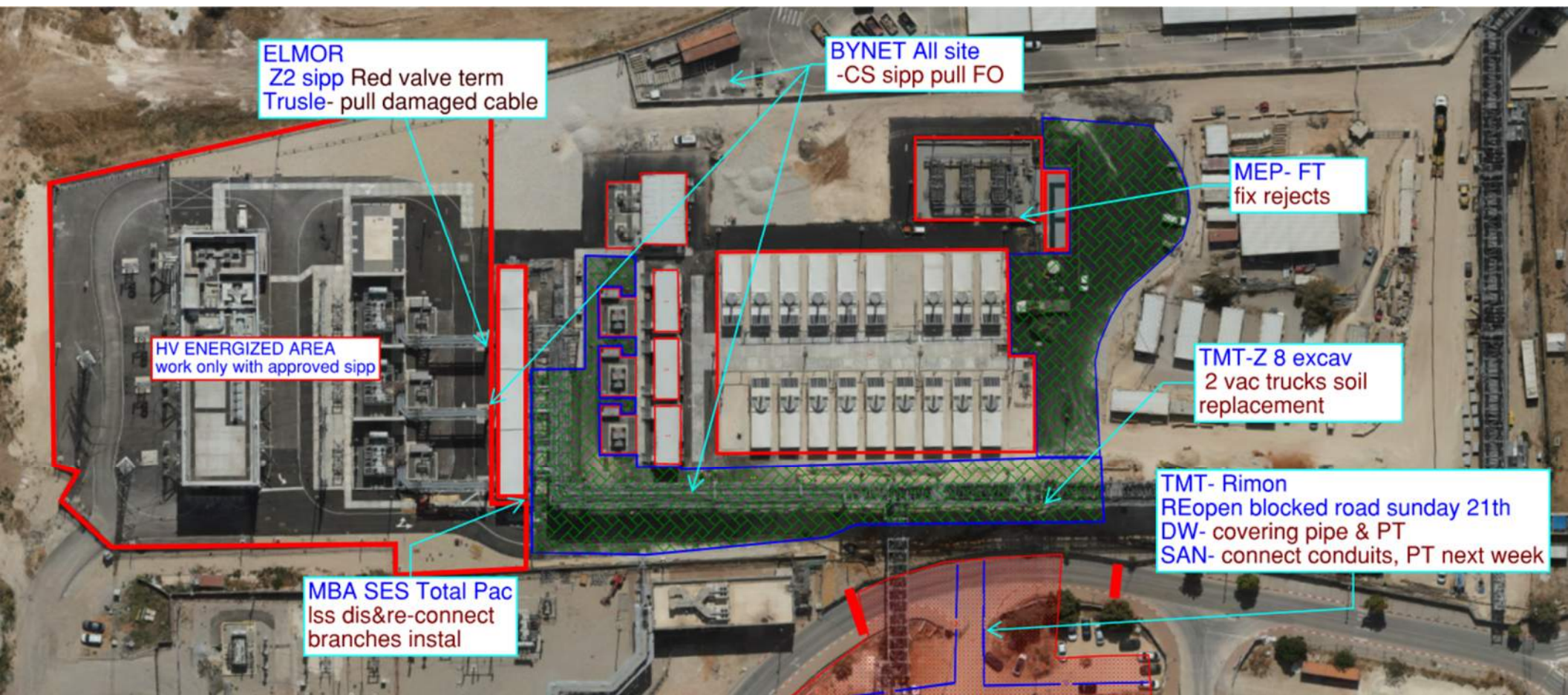
WJG UTILITY LEVEL BUILD OUT











ELMOR
Z2 sipp Red valve term
Trusle- pull damaged cable

BYNET All site
-CS sipp pull FO

MEP- FT
fix rejects

HV ENERGIZED AREA
work only with approved sipp

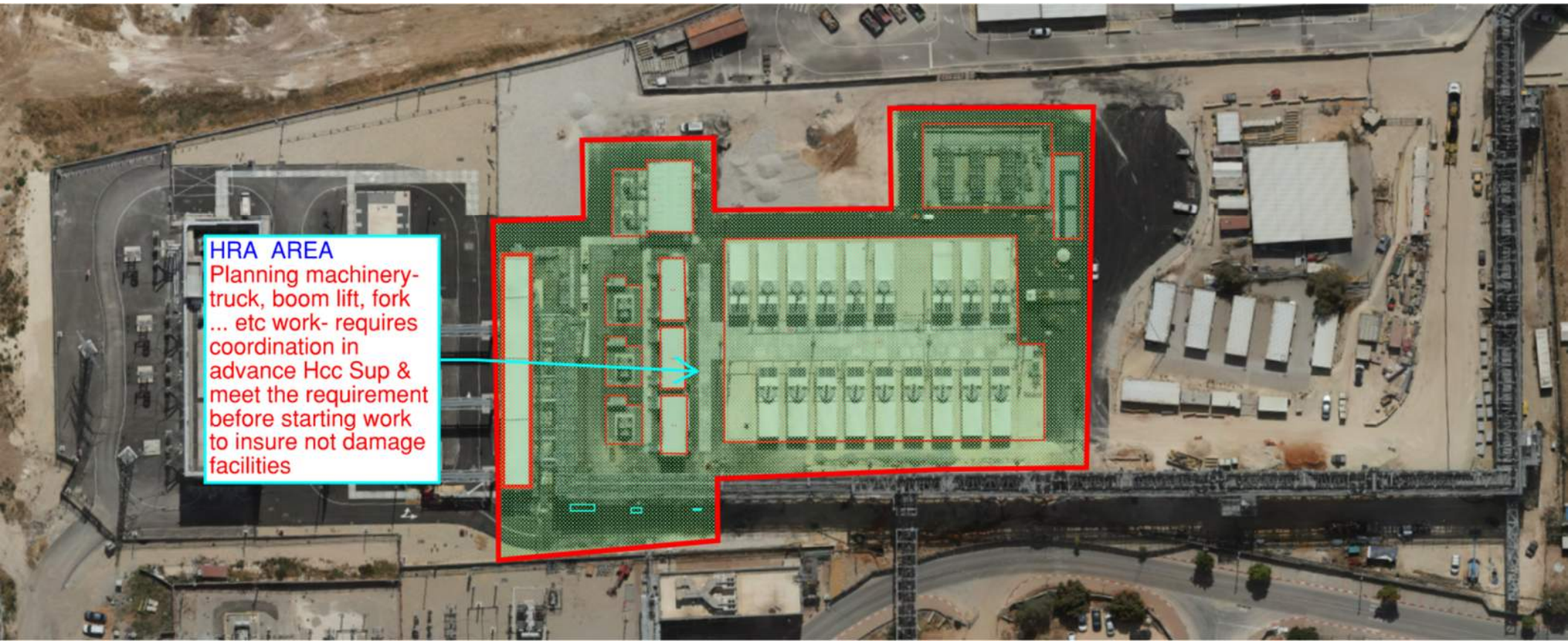
TMT-Z 8 excav
2 vac trucks soil
replacement

MBA SES Total Pac
lss dis&re-connect
branches instal

TMT- Rimon
REopen blocked road sunday 21th
DW- covering pipe & PT
SAN- connect conduits, PT next week

HRA AREA

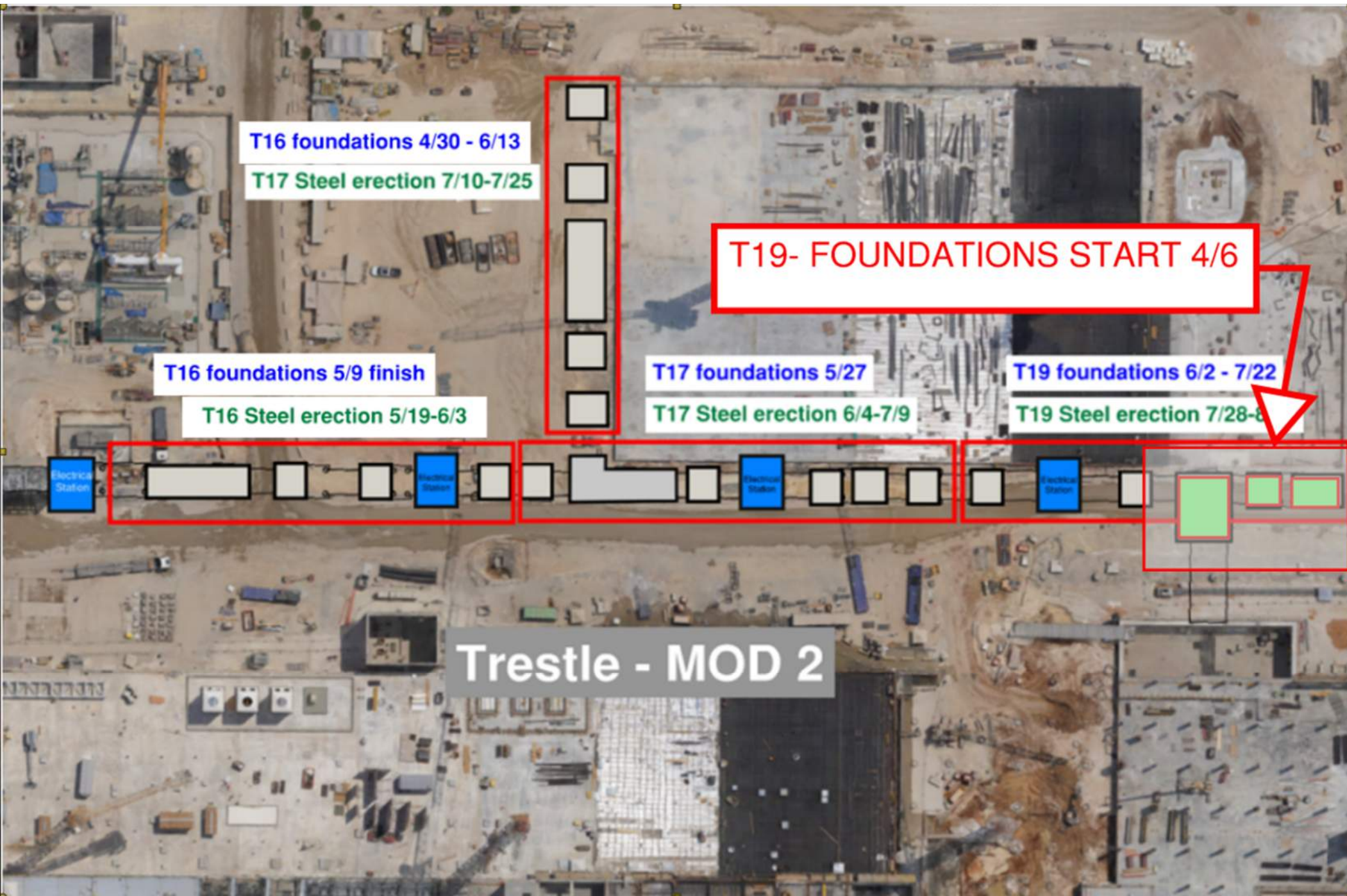
Planning machinery-
truck, boom lift, fork
... etc work- requires
coordination in
advance Hcc Sup &
meet the requirement
before starting work
to insure not damage
facilities





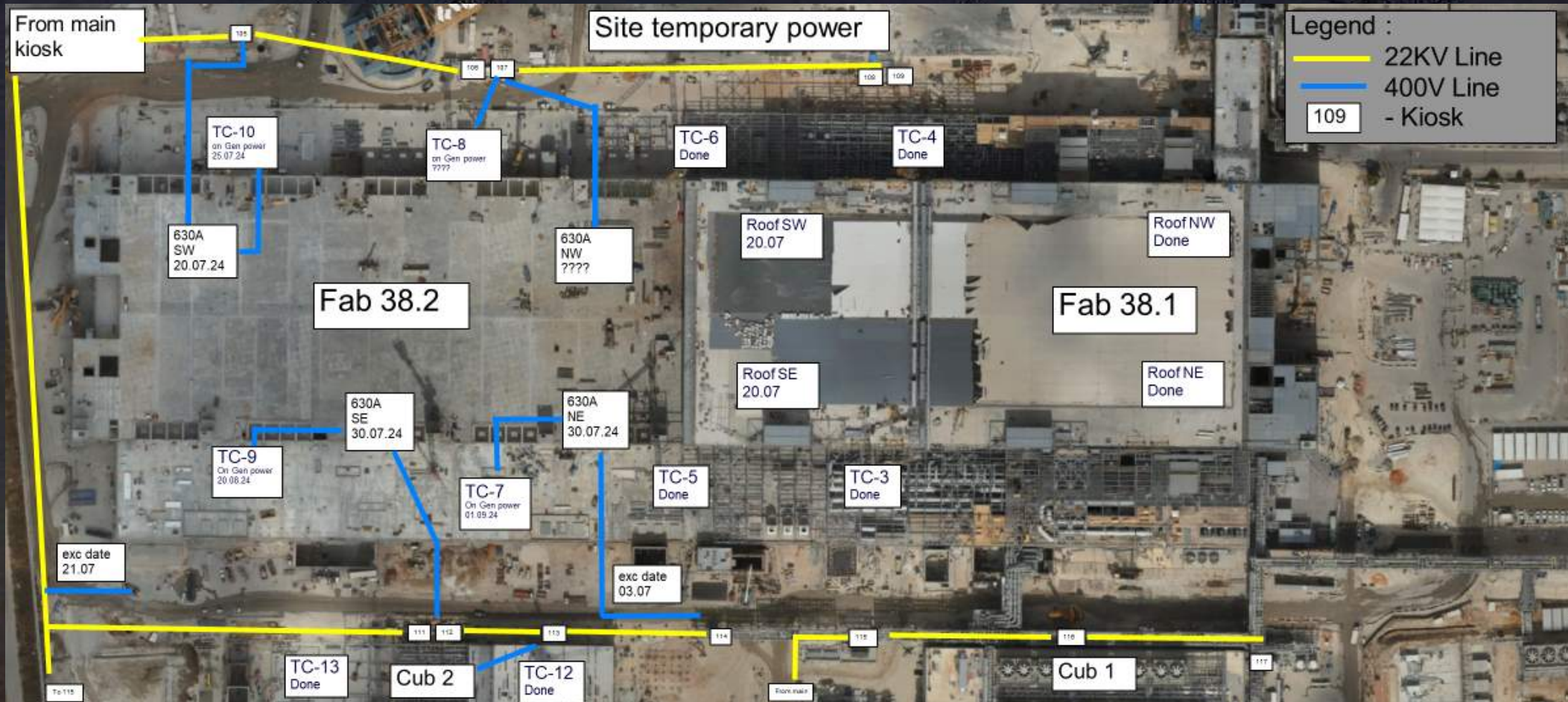
HOFFMAN CONSTRUCTION COMPANY







Daily Coordination Meeting





HOFFMAN CONSTRUCTION COMPANY



Daily Coordination Meeting

Site Logistics

North Gate B

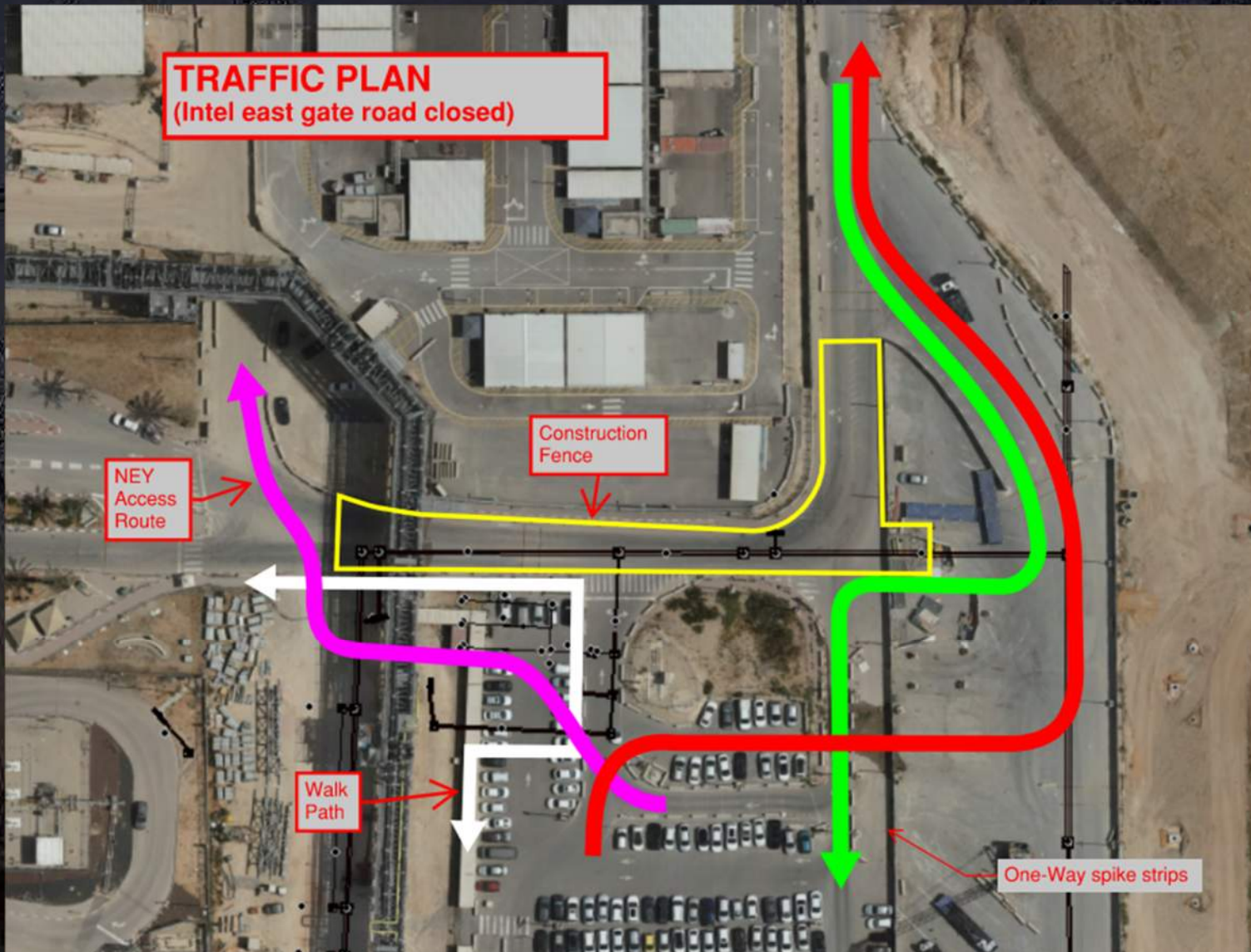




Daily Coordination Meeting

Site Logistics

Traffic Plan





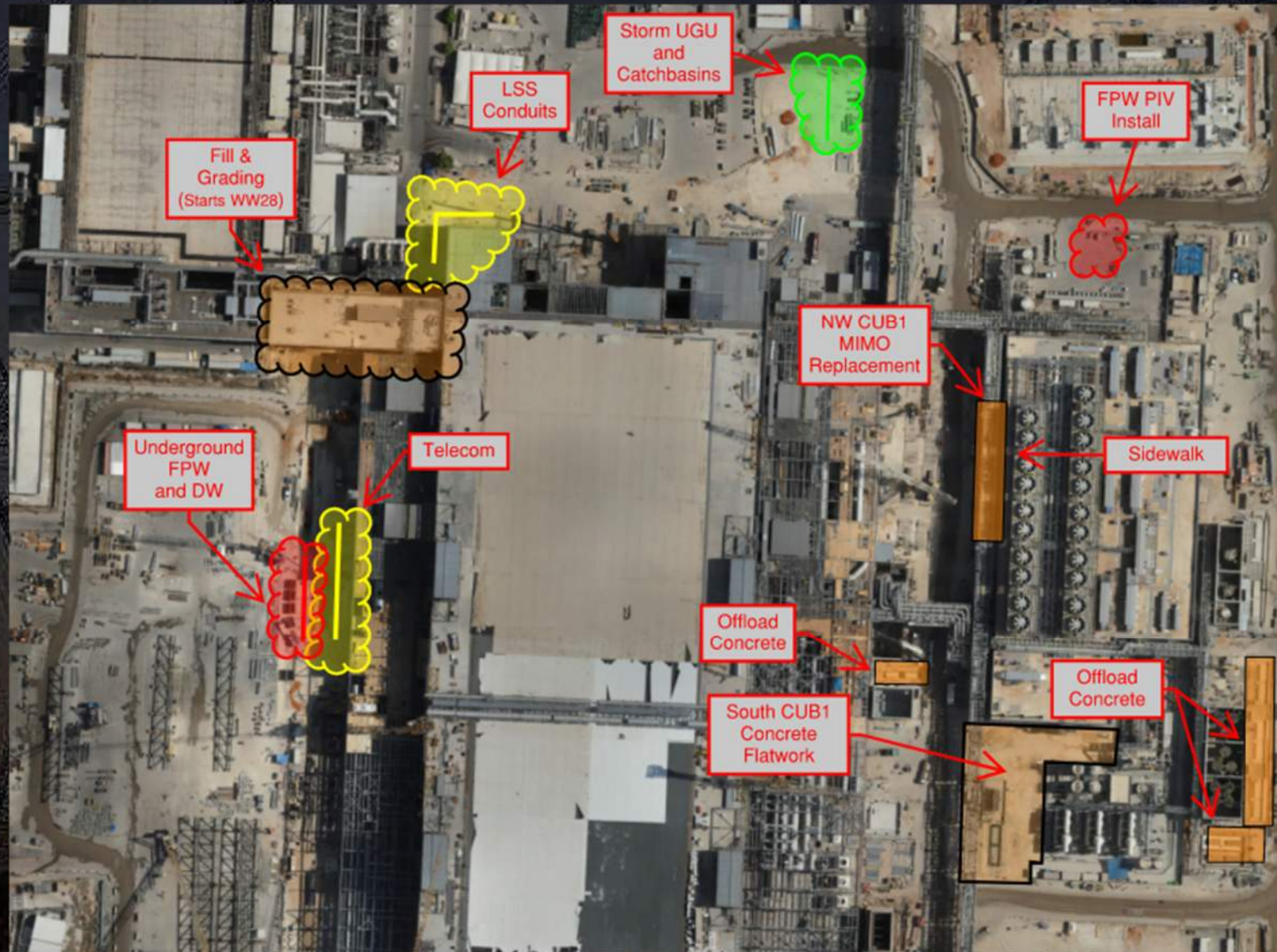
HOFFMAN CONSTRUCTION COMPANY



Daily Coordination Meeting

Site Logistics

North





Daily Coordination Meeting

Site Logistics

South





Daily Coordination Meeting

Site Logistics

SW Parking Lot





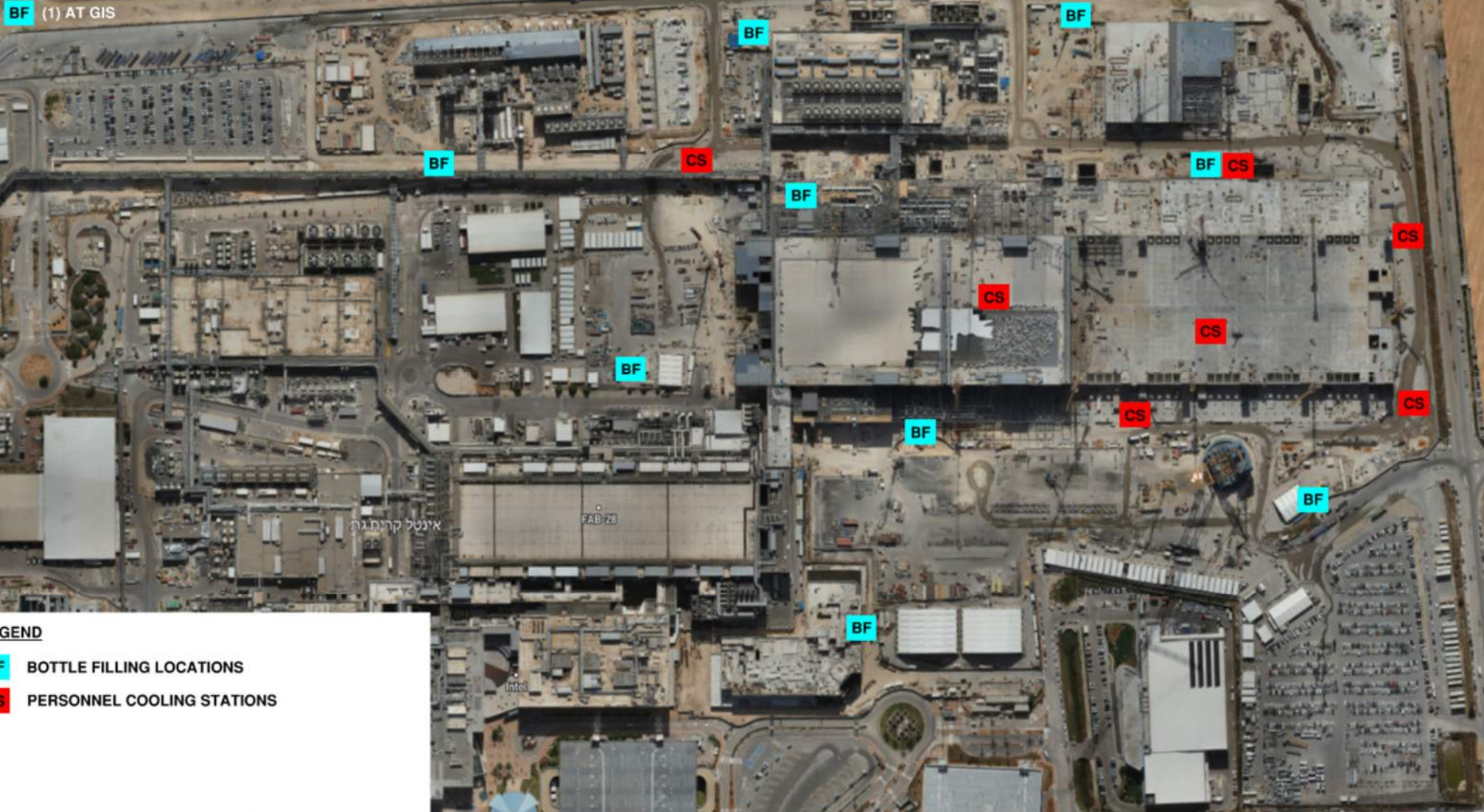
HOFFMAN CONSTRUCTION COMPANY



Daily Coordination Meeting

WATER BOTTLE FILLING & PERSONNEL COOLING STATIONS

BF (1) AT GIS



LEGEND

- BF** BOTTLE FILLING LOCATIONS
- CS** PERSONNEL COOLING STATIONS

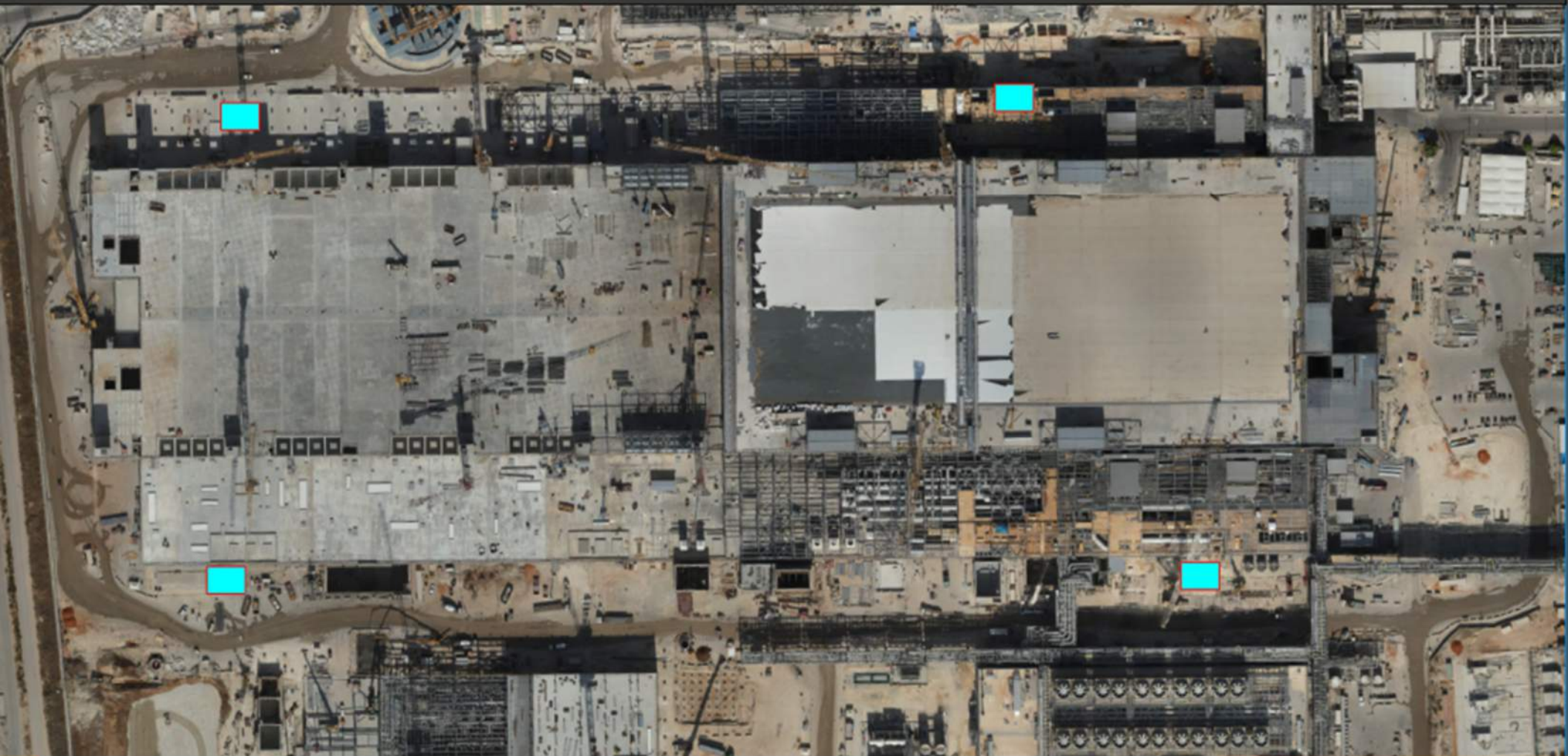
Job Services

Work Week 29

- ▶ Bottle water stations
- ▶ Cooling stations use



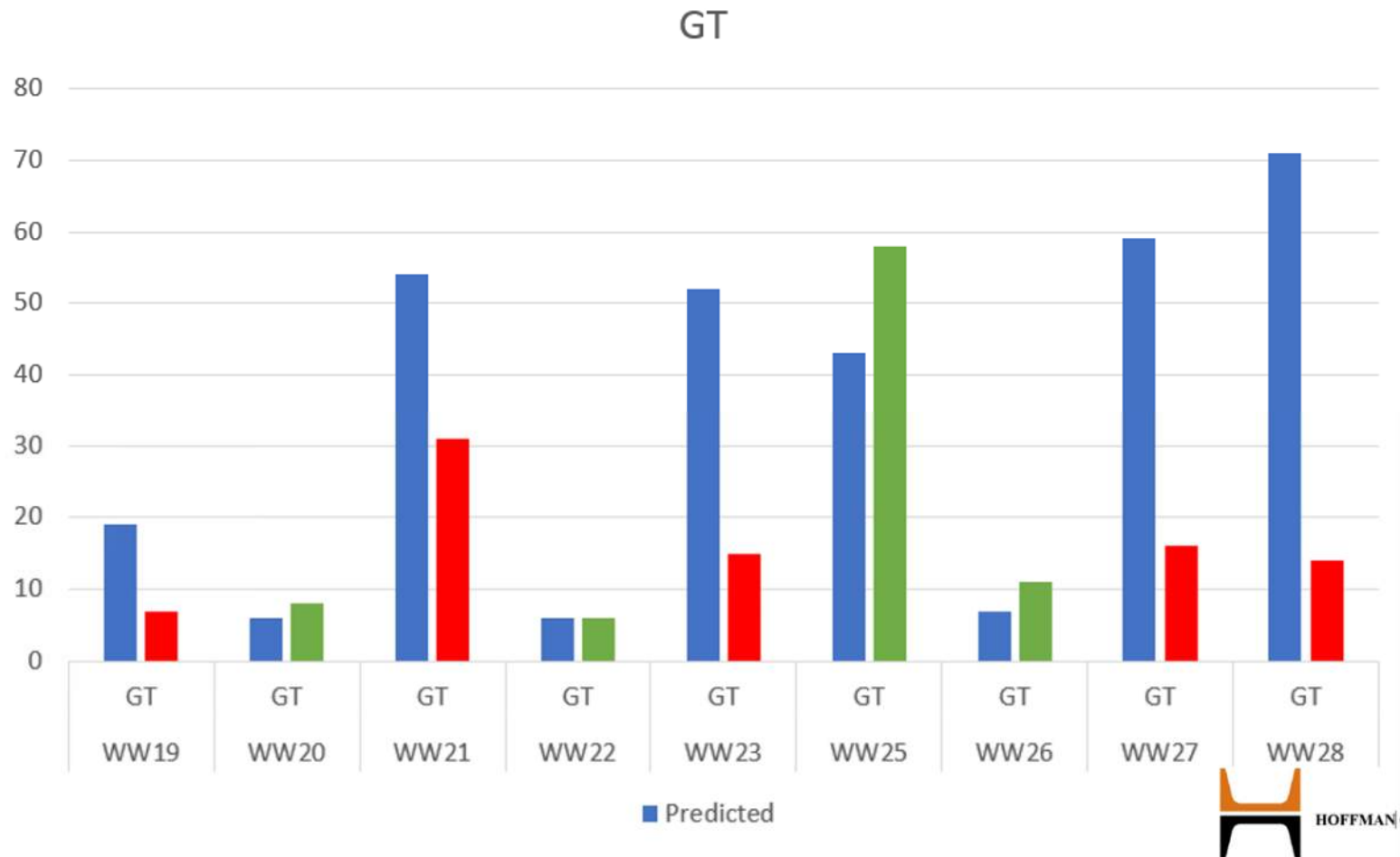
Bottle Water Stations







Commissioning



Scaffolds

- Scaffold built on the project need to be submitted to the HCC Foremen via the Scaffold request form **before** they are erected.
- Scaffolds must be inspected before they are opened by HCC foremen, and weekly.
- Daily inspections required by the contractor using them.
- All personnel using scaffold must have WAH training AND Safe Scaffold Use training.
- Do not modify scaffolds for any reason. If scaffolds must be modified the proposed changes need to be submitted and **approved** by HCC foremen.

Heat Index- July 17th

	temperature (°F)																
	80	82	84	86	88	90	92	94	96	98	100	102	104	106	108	110	
Relative Humidity (%)	40	80	81	83	85	88	91	94	97	101	105	109	114	119	124	130	136
	45	80	82	84	87	89	93	96	100	104	109	114	119	124	130	137	
	50	81	83	85	88	91	95	99	103	108	113	118	124	131	137		
	55	81	84	86	89	93	97	101	106	112	117	124	130	137			
	60	82	84	88	91	95	100	105	110	116	123	129	137				
	65	82	85	89	93	98	103	108	114	121	128	136					
	70	83	86	90	95	100	105	112	119	126	134						
	75	84	88	92	97	103	109	116	124	132							
	80	84	89	94	100	106	113	121	129								
	85	85	90	96	102	110	117	126	135								
	90	86	91	98	105	113	122	131									
	95	86	93	100	108	117	127										
100	87	95	103	112	121	132											

Caution

Extreme Caution

Danger

Extreme Danger

Extreme Caution

- Ensuring water and shaded areas available
- Acclimating workers
- Emergency planning and response
- Training workers and supervisors on the signs of heat stress and preventative measures
- Modified work schedules and/or rotating out workers
- Monitoring of workers for signs of heat stress