

Daily Coordination Meeting



14:00 Sign In

Daily Coordination Meeting

General Topics:

- Know where proactive areas are
- Proper supervision handoff



Cub @ Zone 7
@ 12:00 am

Cub @ Zone 7
@ 12:00 am



FAB-28

UTILITY LEVEL LOGISTICS





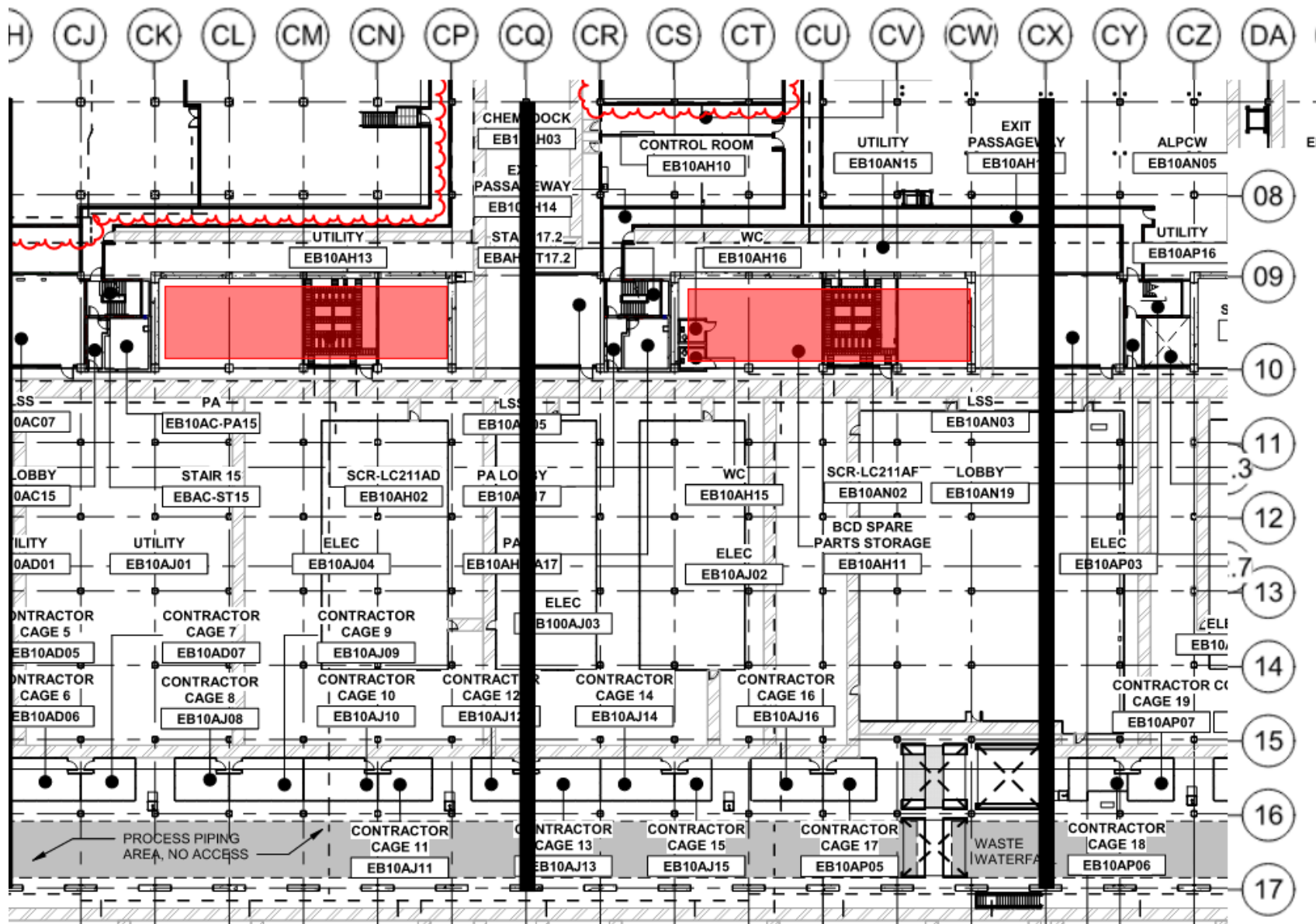
HOFFMAN CONSTRUCTION COMPANY



UTILITY LEVEL LOGISTICS

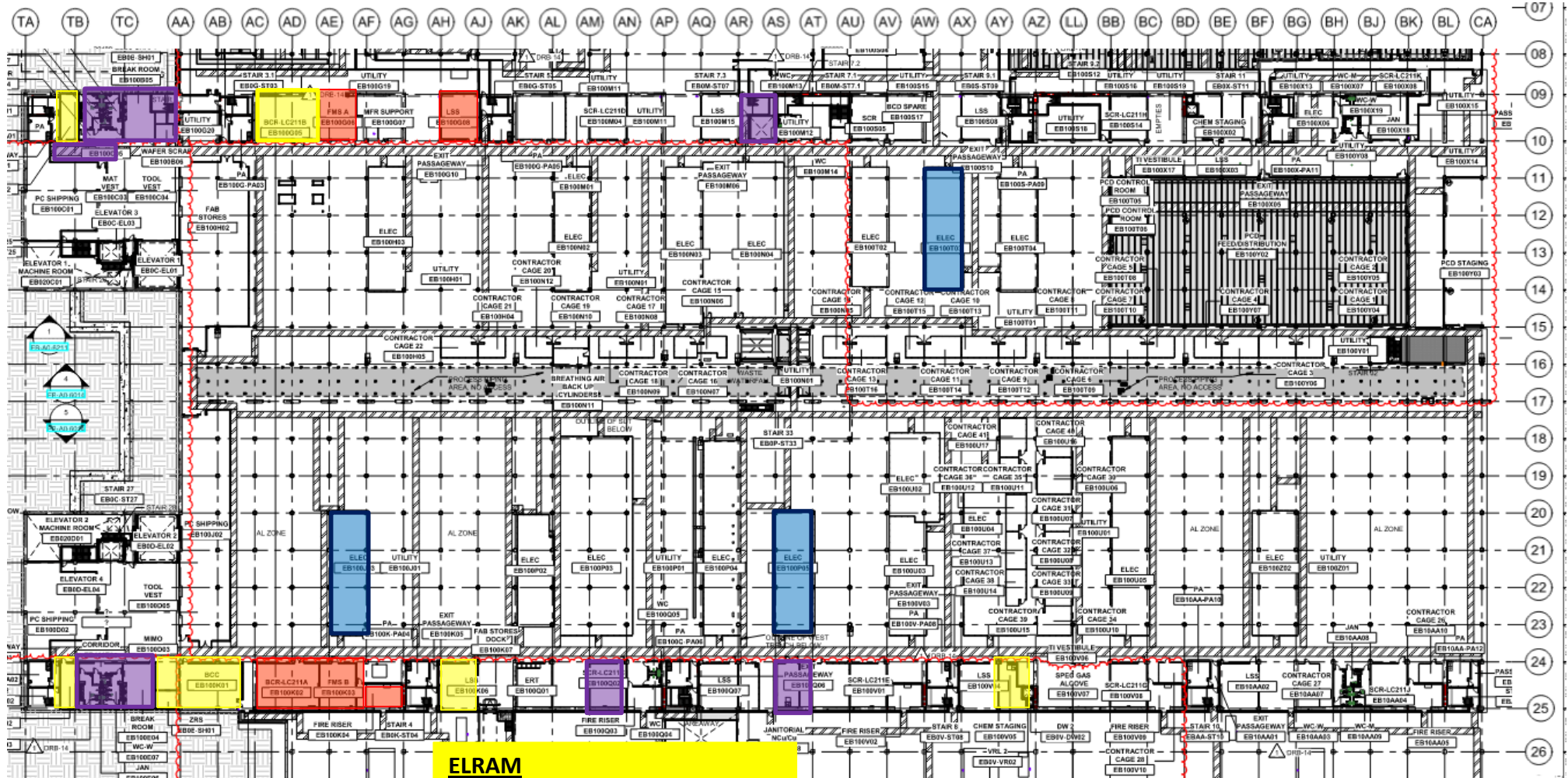


UTILITY LEVEL LOGISTICS





UTILITY LEVEL MOD1



BELFOR

TTNE - Corridor + Toilets + Break R
Stairs 7.3
Wafer scrap
TTNW - Toilets + Break R
SCR 2W
Exit pass 3W

ELRAM

Ongoing
LSS TTNW + TTNE
BCR 1E
CHEN STAGING
LSS 2W
Chem staging
BACKING
BCR 1E+1W – Pending funding
LSS's

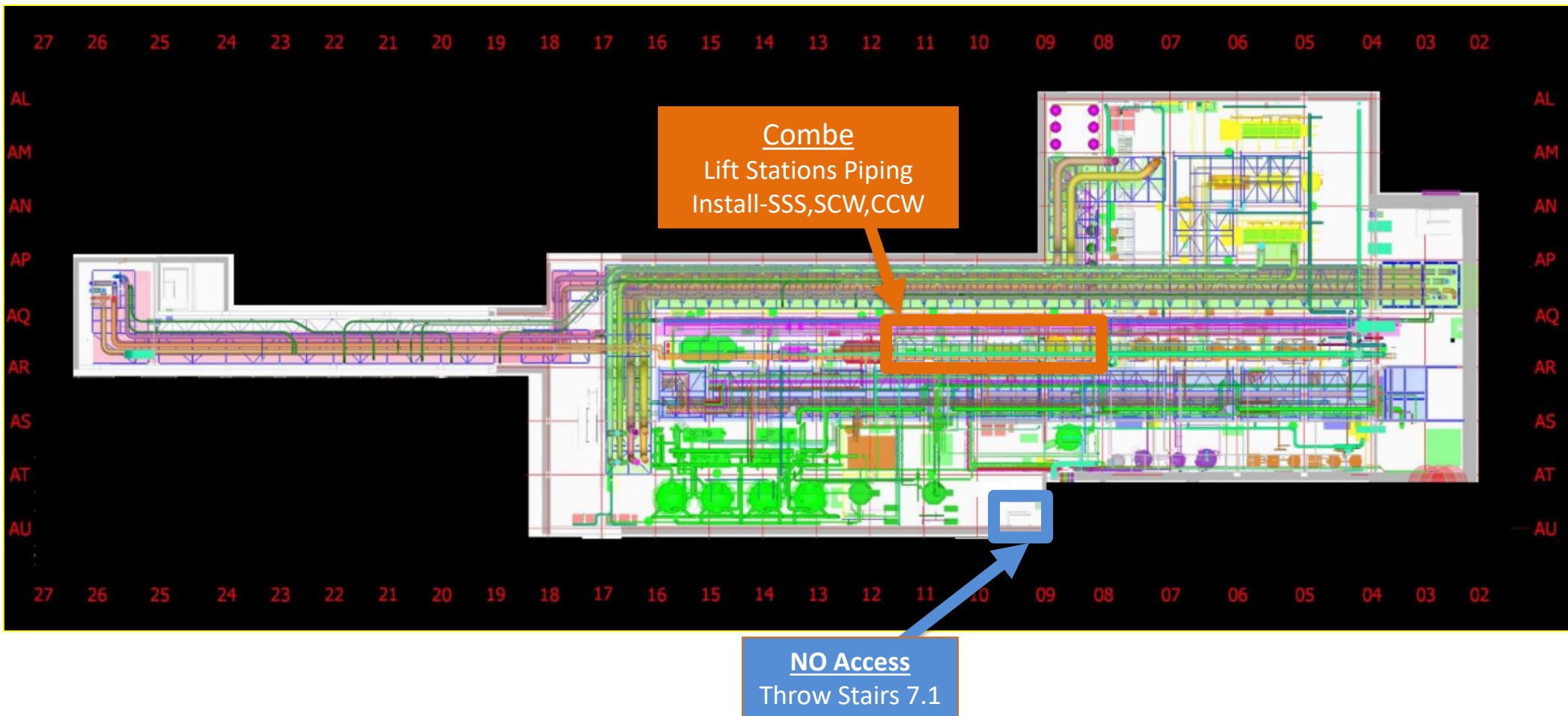
MEP+Electrical

Ready for re-install
FMS A 1E
FMS B 1W
Fire Risers 1W
BCC



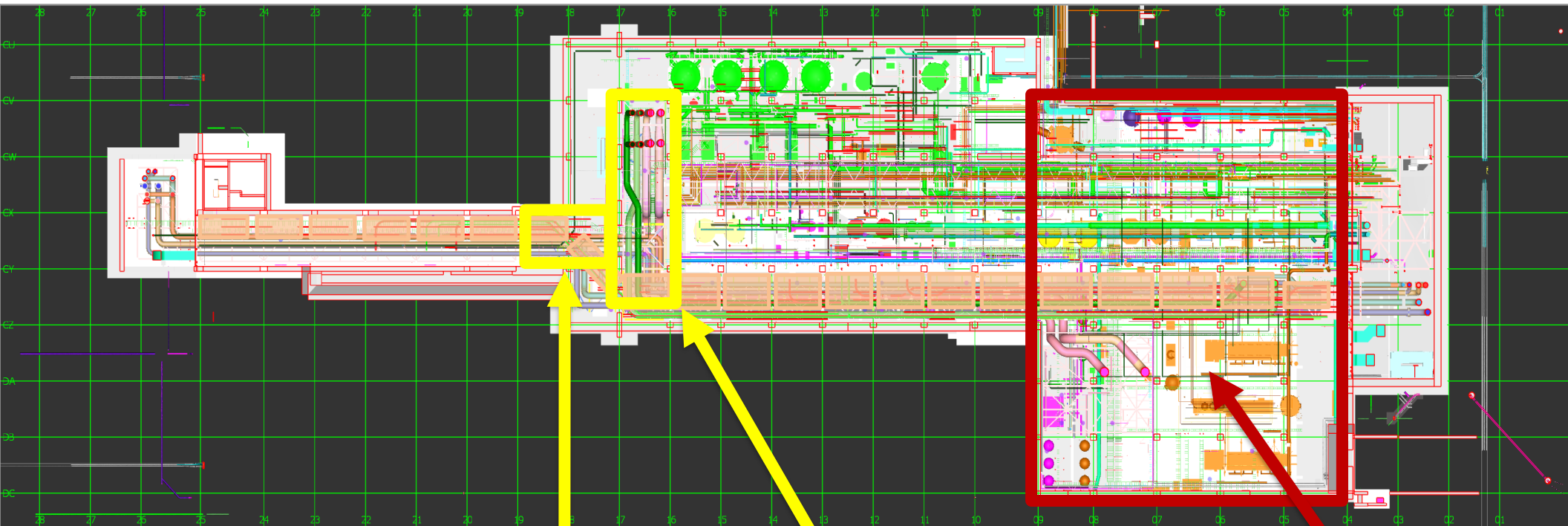


SUT 38.1 LEVEL





SUT 38.2 LEVEL



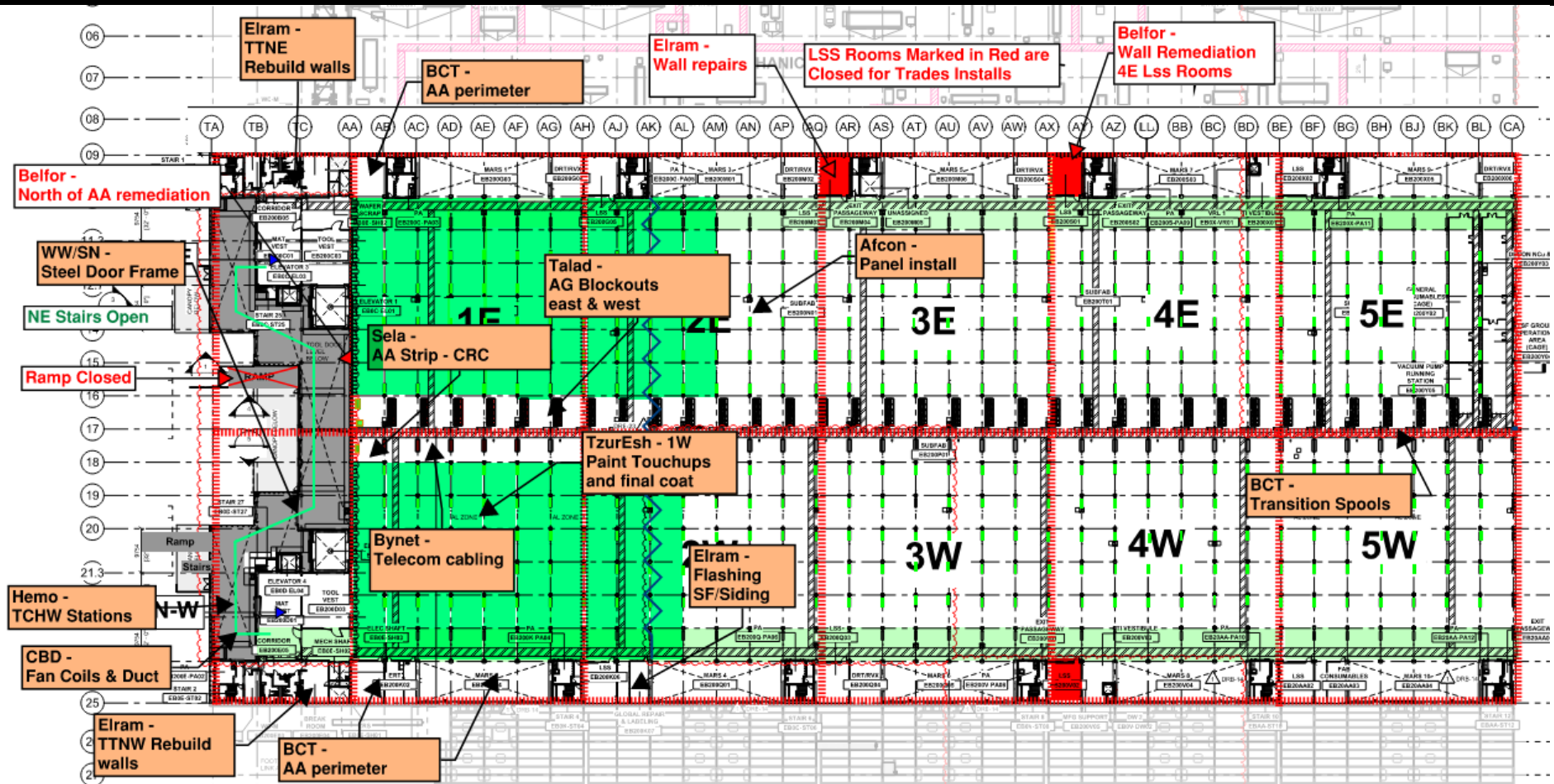
CRW
H&T
NEED PIPING

17-18 line
Bore Loading

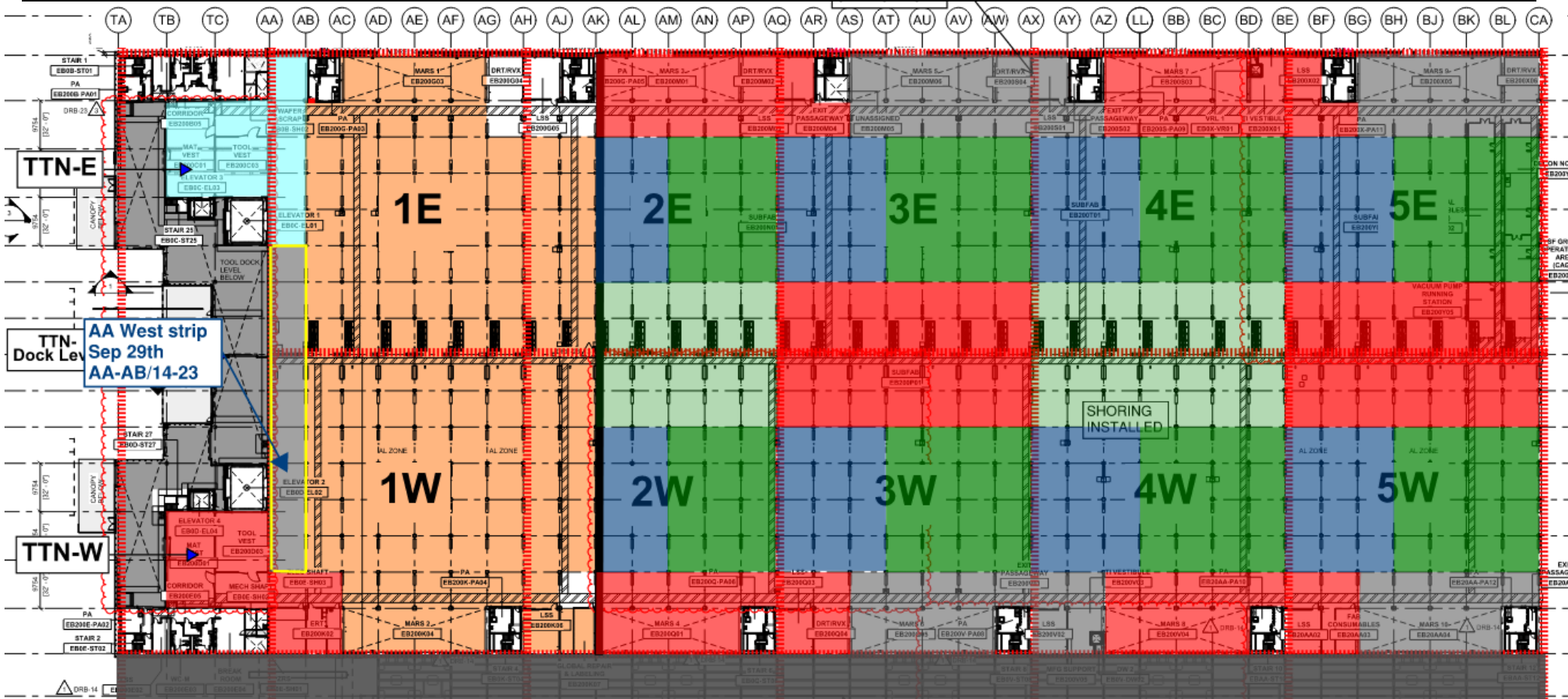
16-17 line
lvl2+3
bed lift: Need a
Date

Vesda
H&T
Ongoing

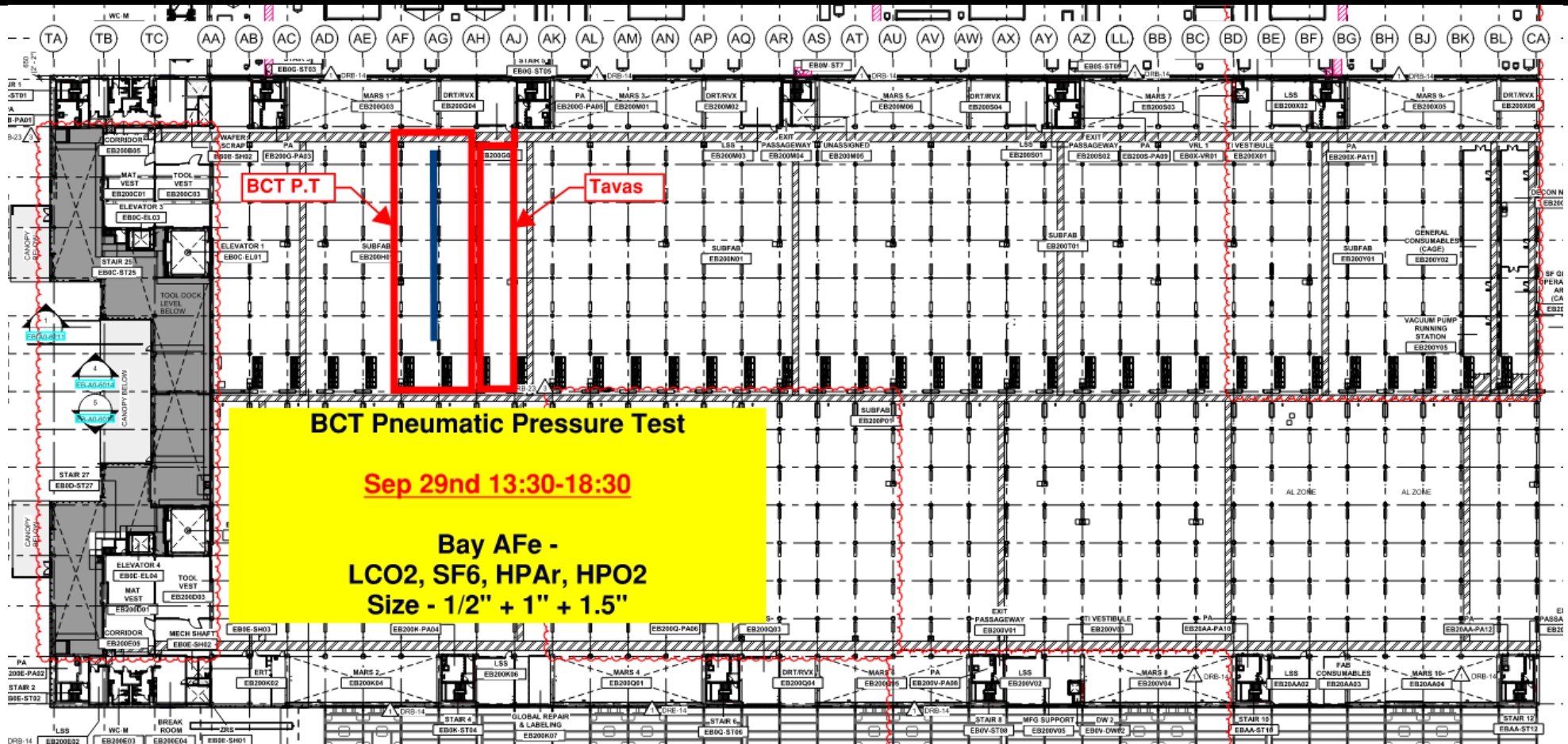
SUBFAB BUILDOUT MOD 1



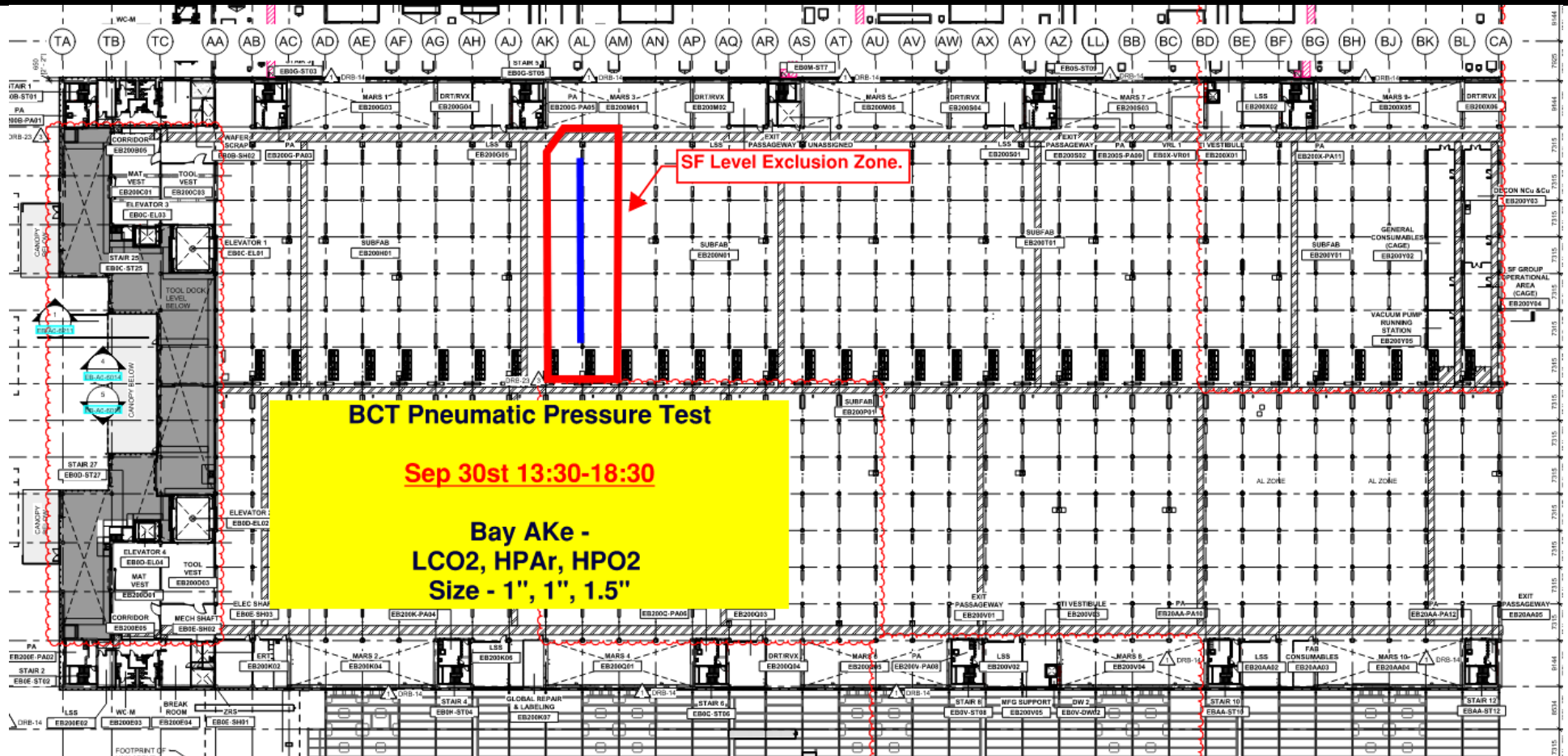
SUBFAB CRC TOPCOAT



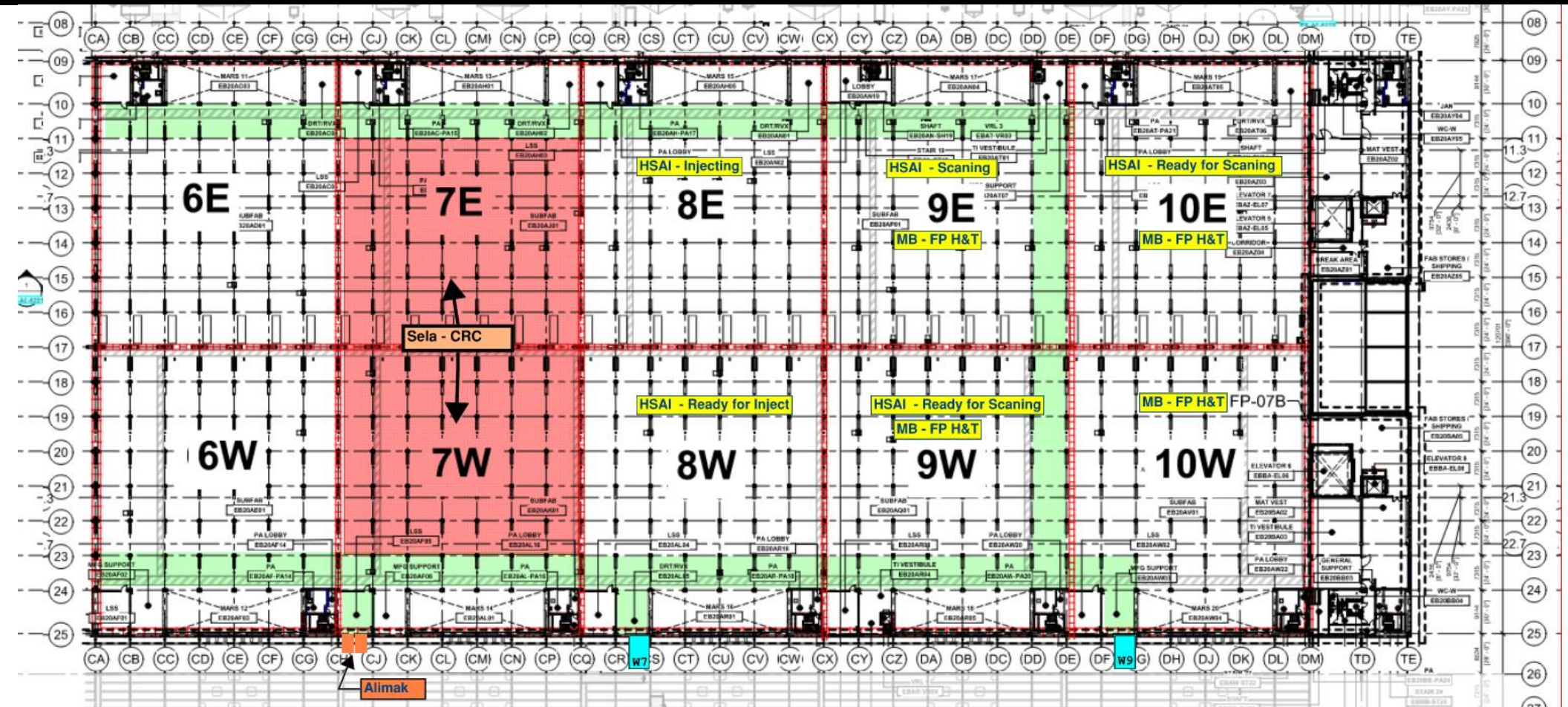
BCT Pressure Test Exclusion Zone



BCT Pressure Test Exclusion Zone



SUBFAB BUILDOUT MOD 2



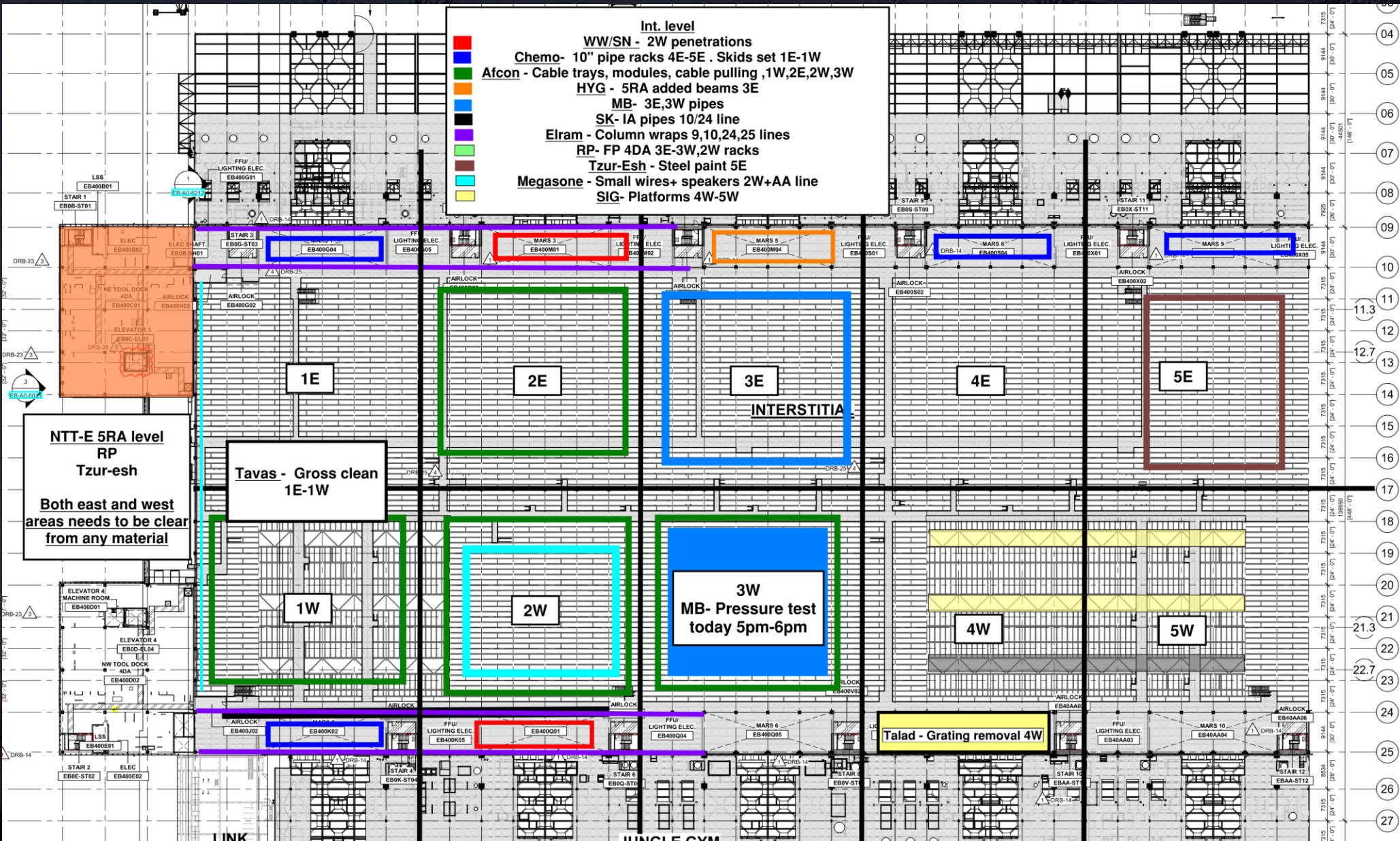


Sk pressure test
Today at 17:00
NETT

- CR level:**
- Afcon - Cable trays, modules and stickers ,2E, 2W,3E,3W,4E
 - MB- 1W drops. 2E- 2W pipes and drops
 - Elram - 9-10,24-25 columns/shaft walls. AA line column wraps
 - WW/JS - 17-18 line added beams+ AS south stocker beams
 - Meptagon - I&C 2W
 - D&P - 5E blades install.
 - Tzur-esh - 5E blades. 1W-1E shaft walls
 - HYG- 5W Litho crane steel
 - PT - Duct prep for test AA-AH east
 - Talad- 1W 4DA holes drilling, 1W cutting around steel,17 line bracing
 - TMT - Safety net install

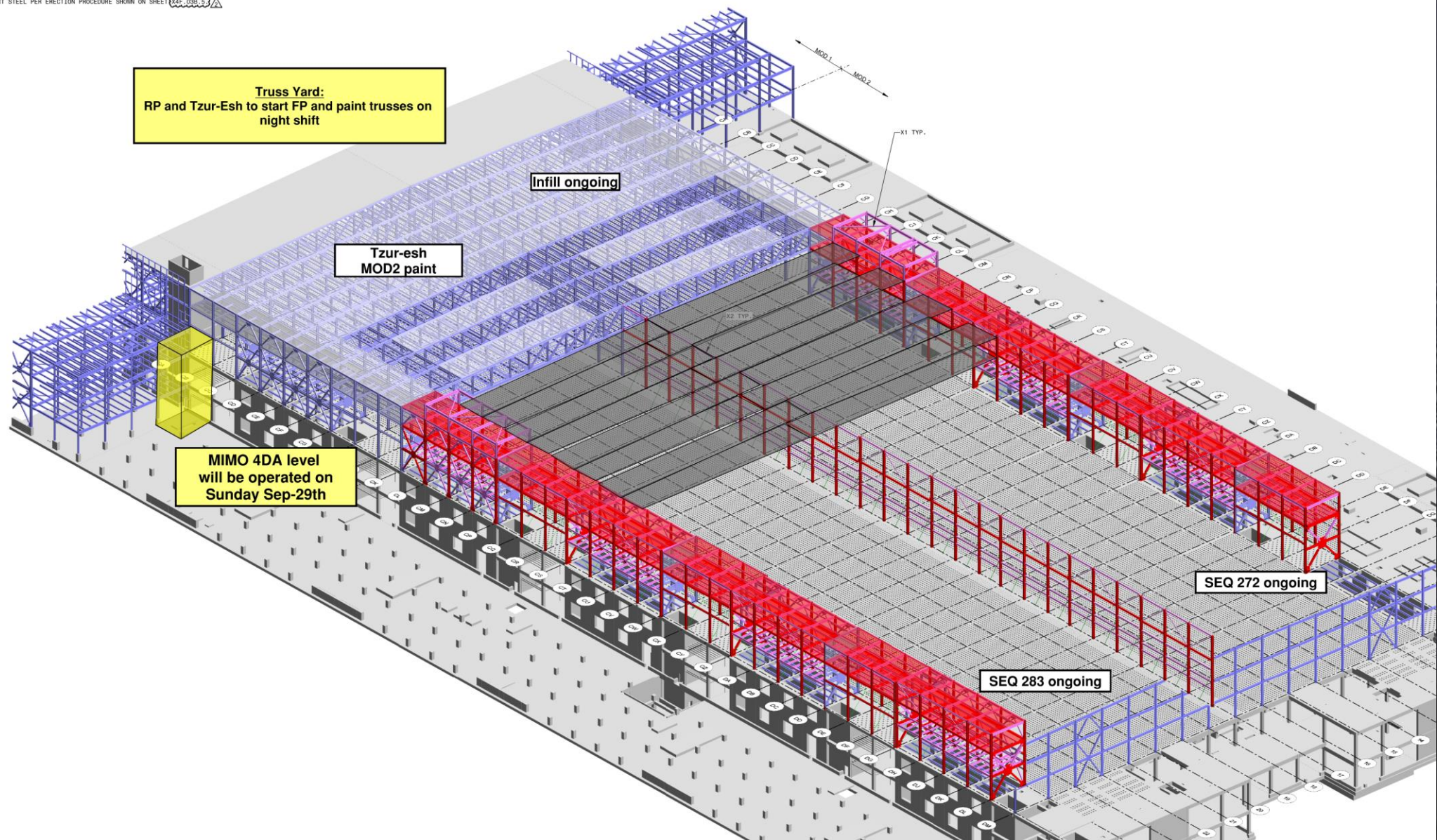


Link
RP - FP 5RA level
MB - Upper level fire protection piping
Pach-Taas - exhaust duct install and tie in
SIG- Mobile scaffold install
Afcon- Rack install
D&P- Seismic cable install+rods
Tzur-esh - Night shift
Meptagon - Zero Ref.
Newcotech- Scream





11D-17 SUPPORT STEEL PER ERECTION PROCEDURE SHOWN ON SHEET 114P-000.3.1



Clean Room Wall Of Shame



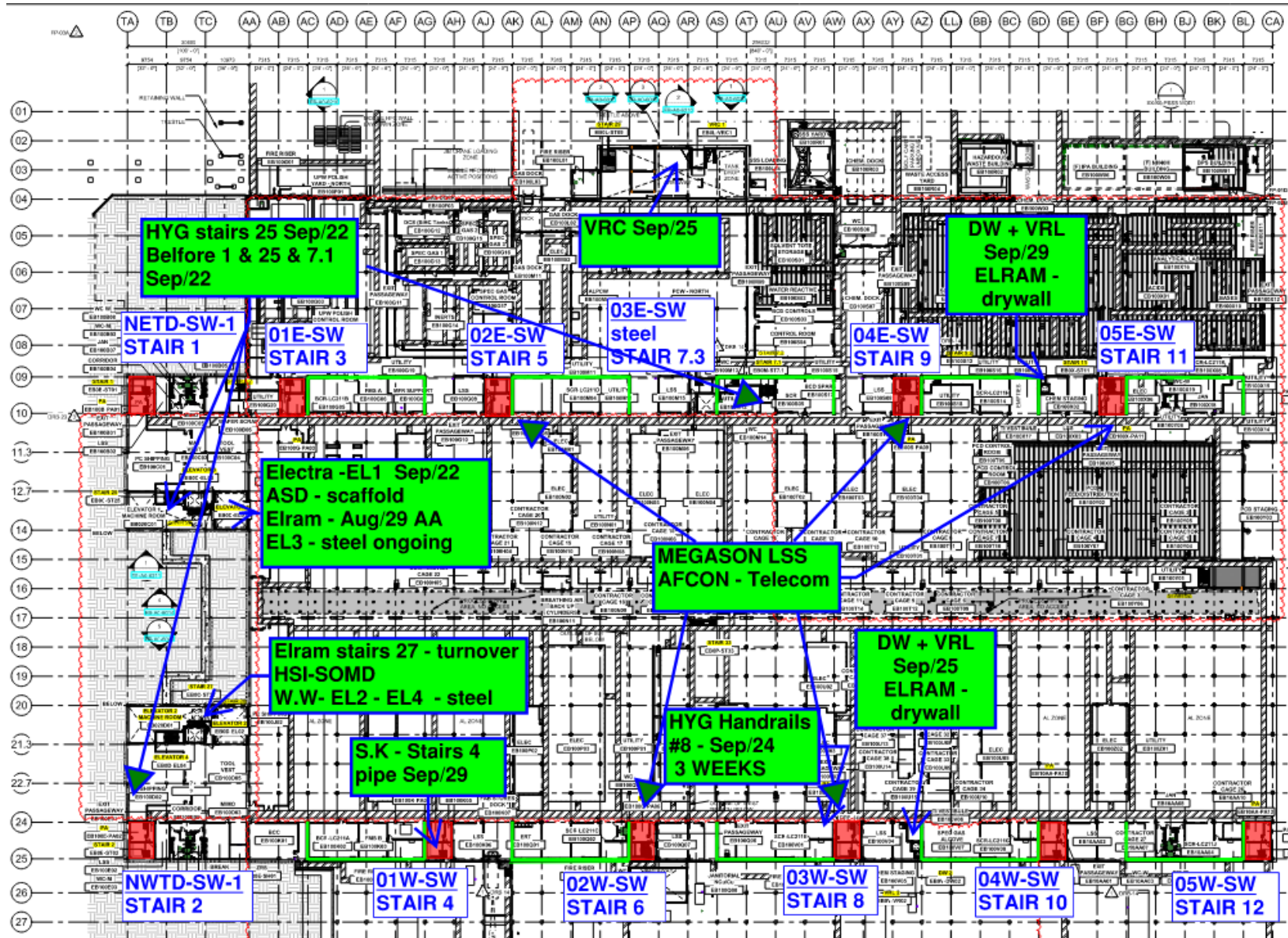
Sami najamy ag/15

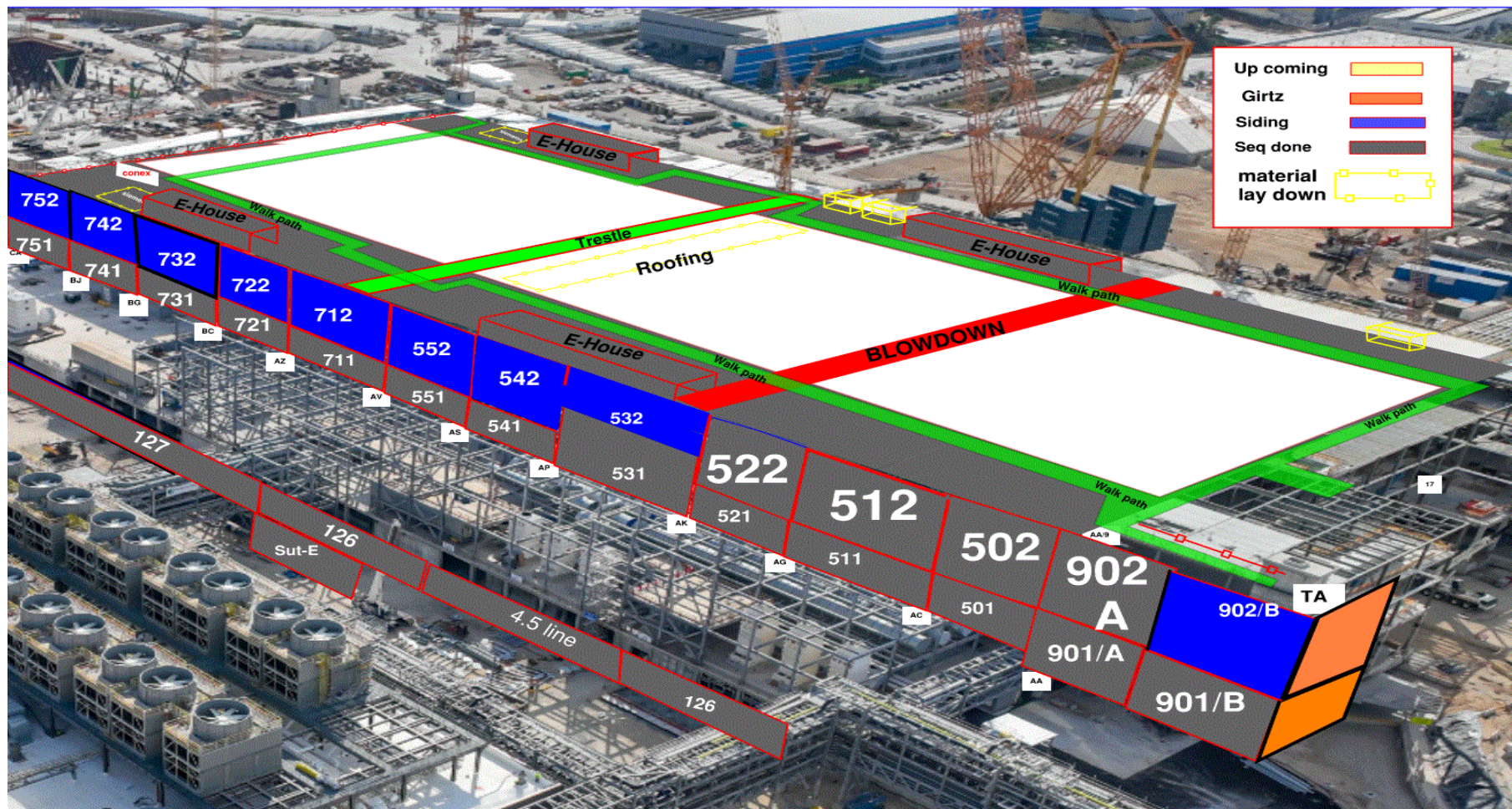


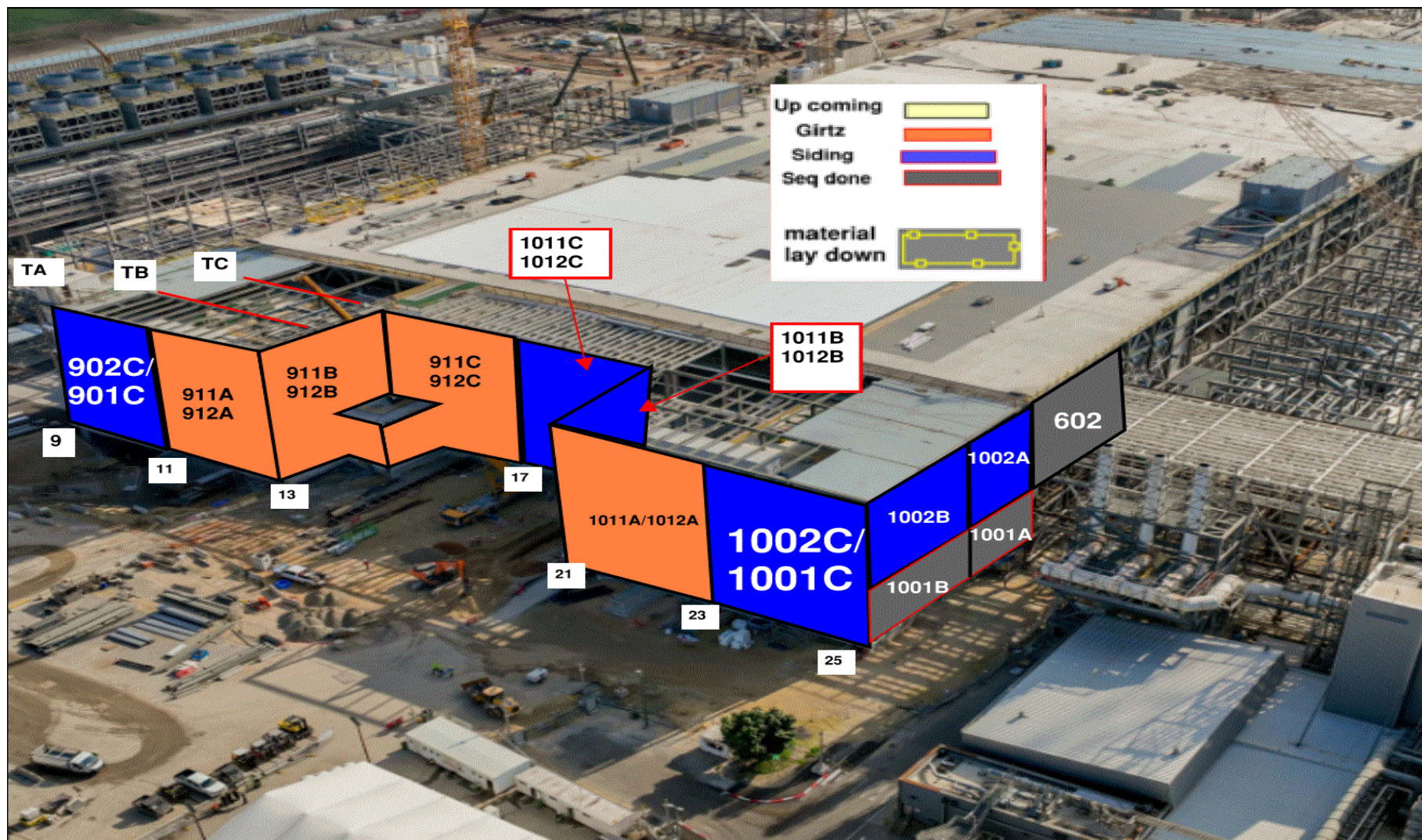
afcon

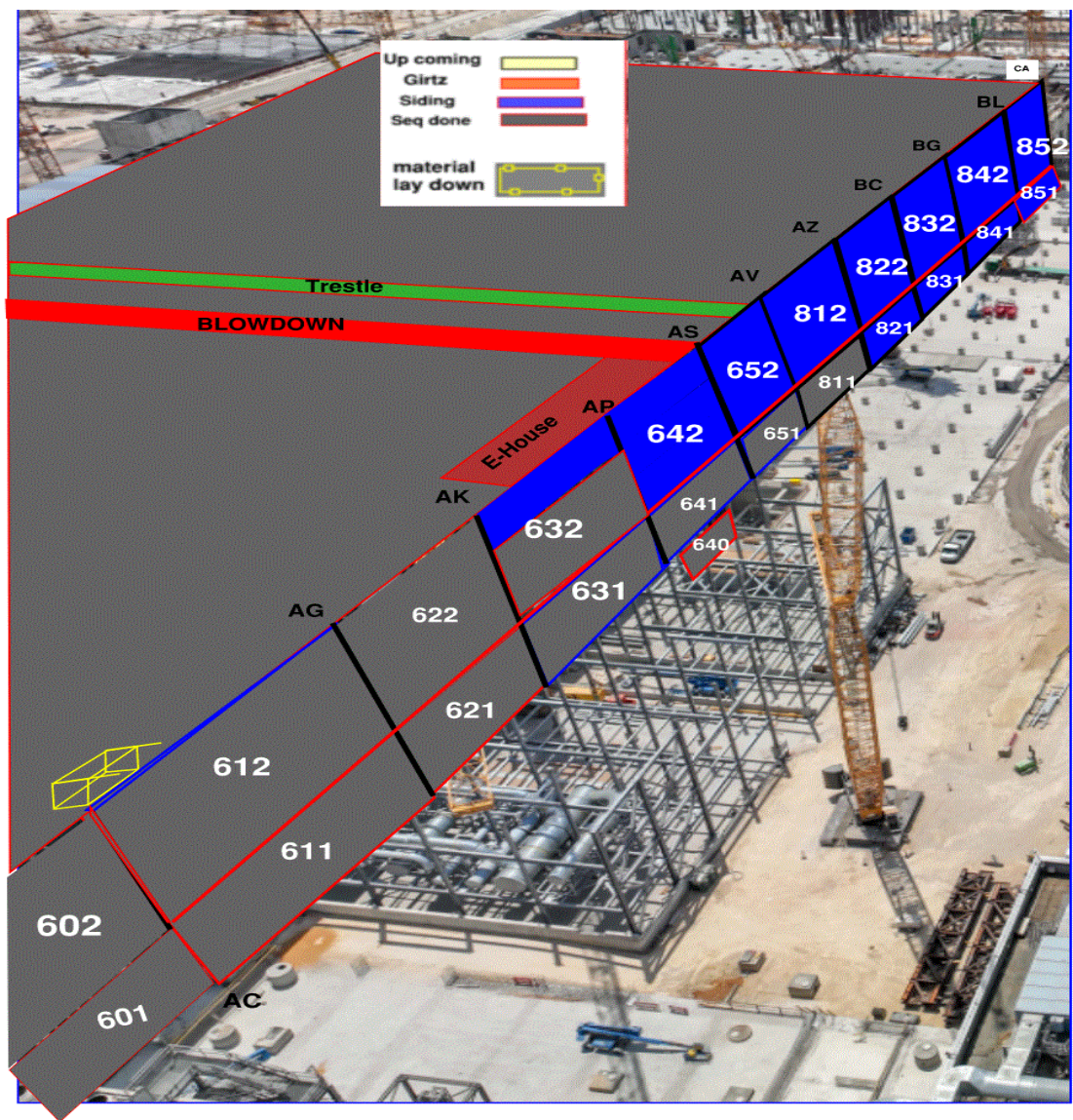


Malchimim badarom









Siding - East FAB - PSSS

DEMO

Siding - West FAB - JYG

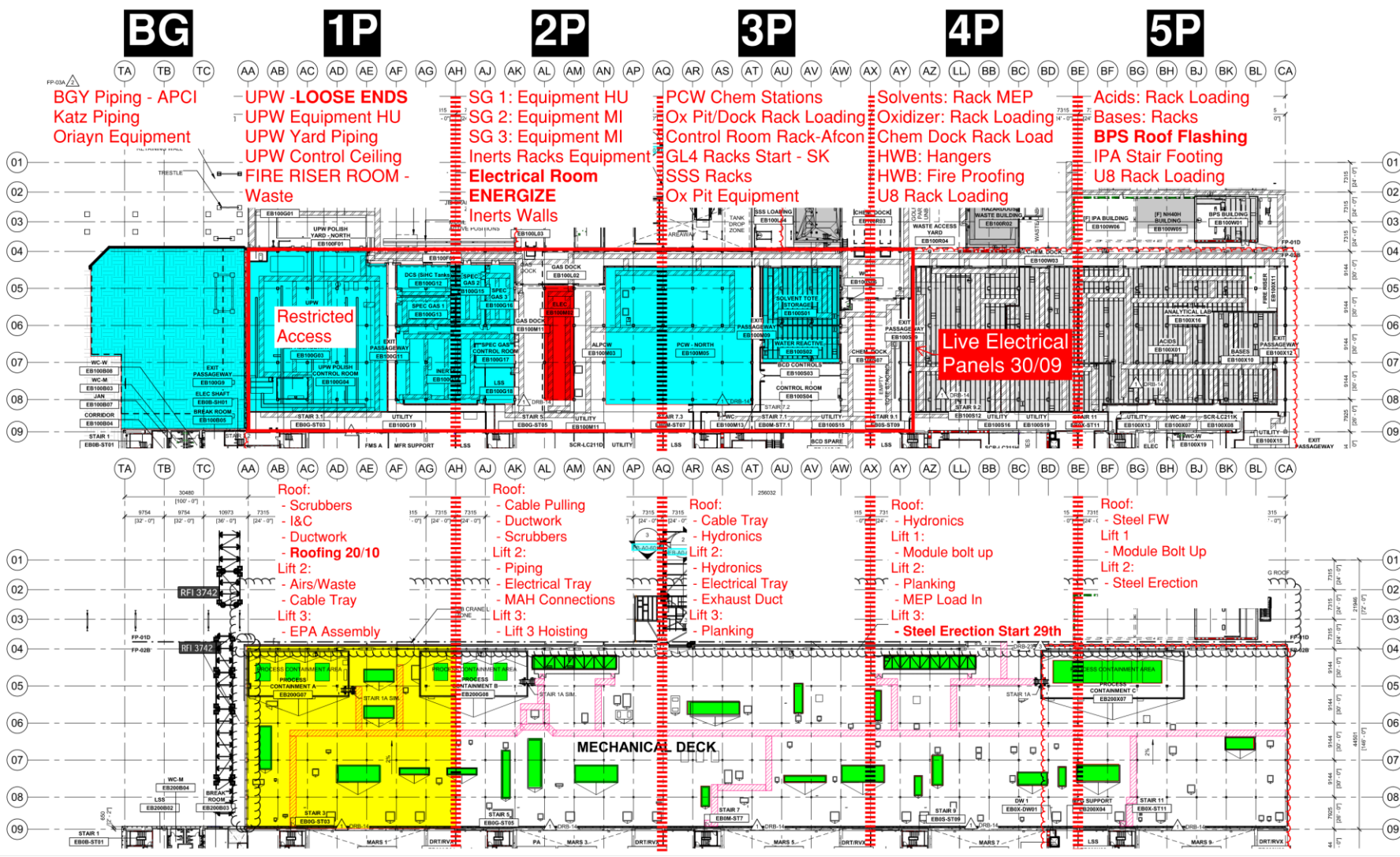
Link

1
2
3
4
5

PSSS.1

Utility Level 1YA

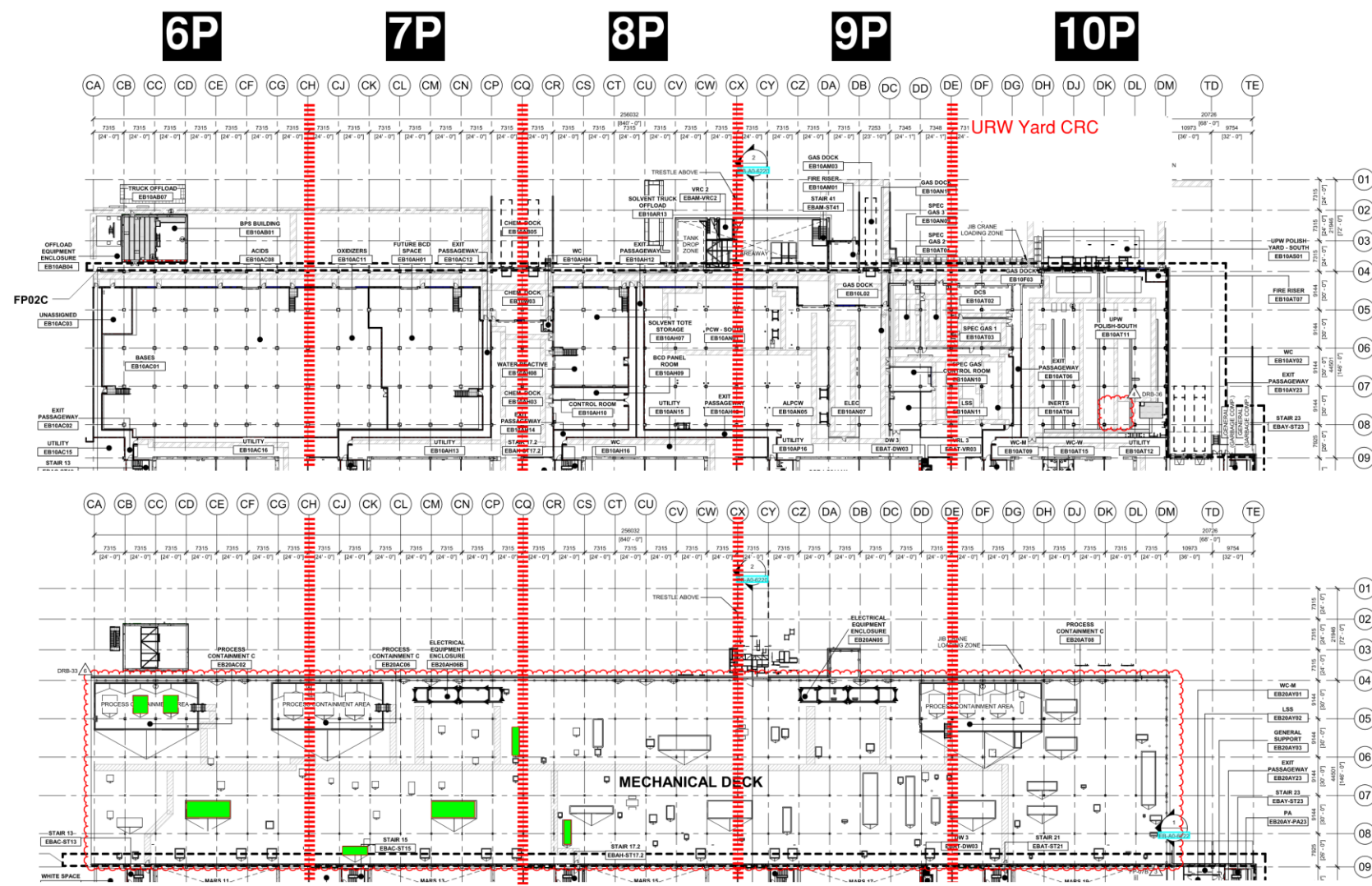
PSSS Roof 2SA



PSSS.2

Utility Level
1YA

PSSS Roof
2SA

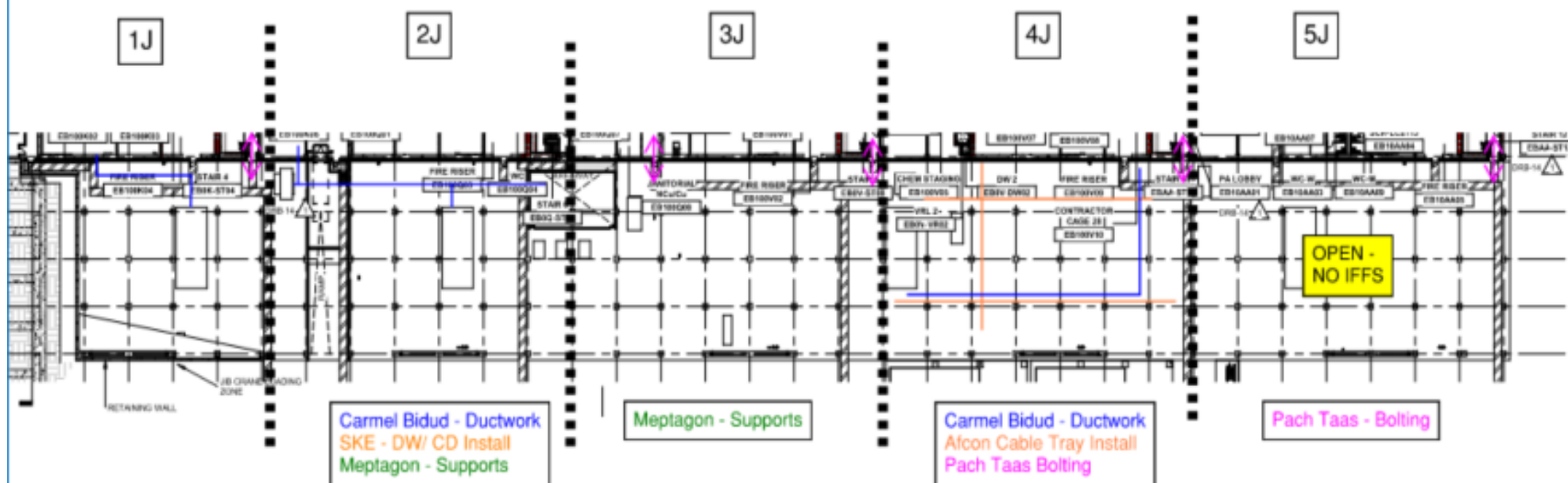


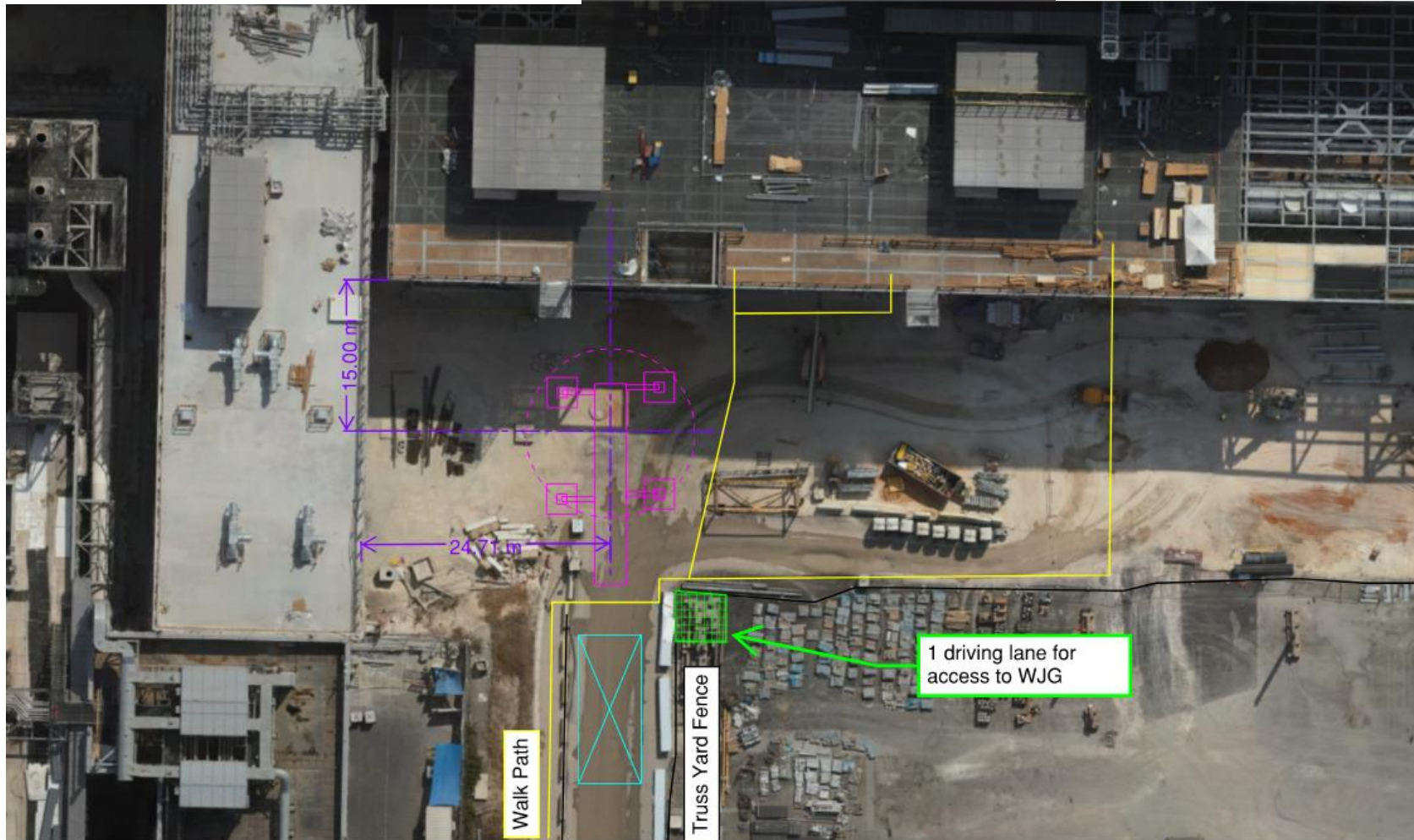


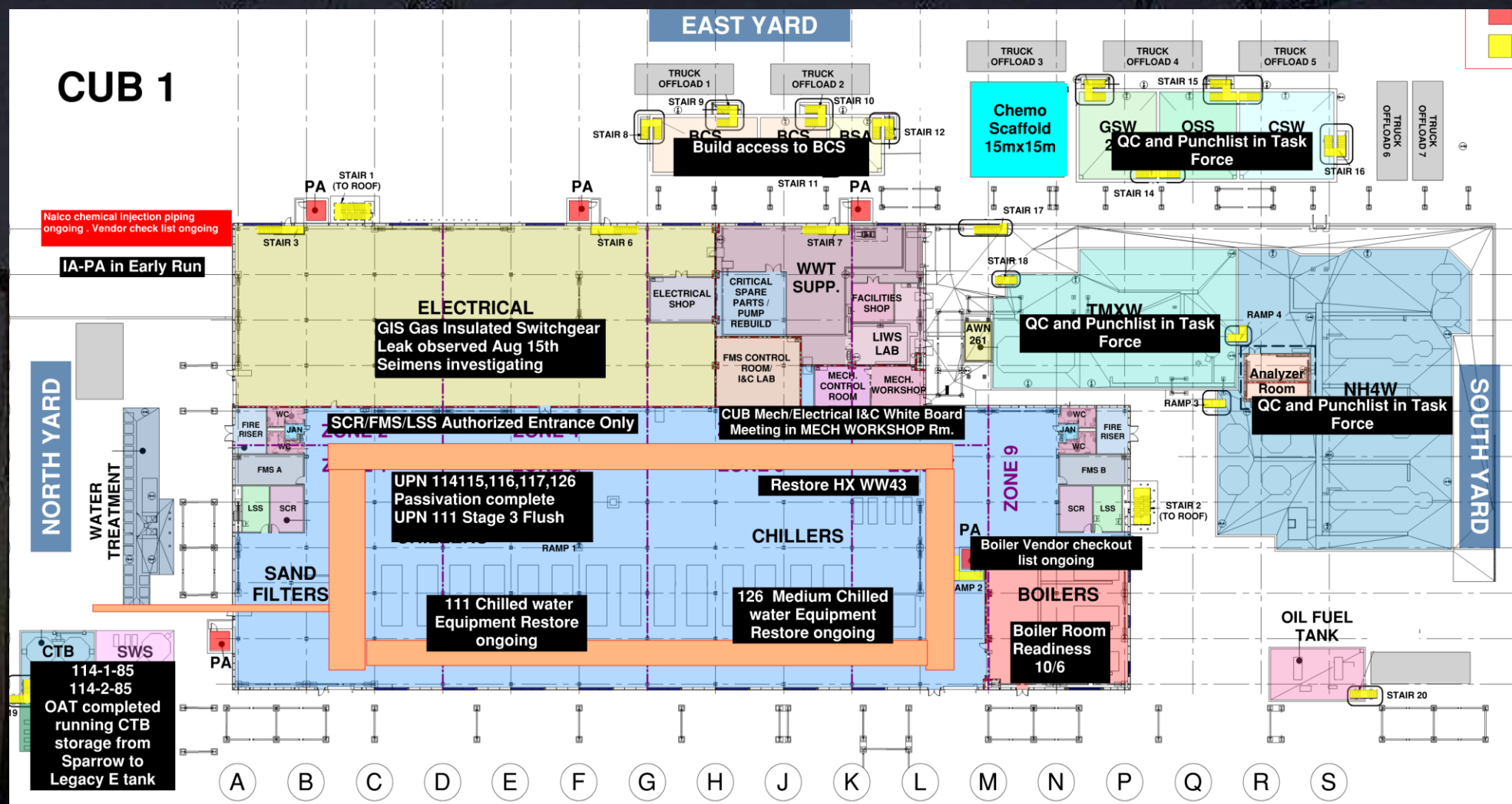
HOFFMAN CONSTRUCTION COMPANY

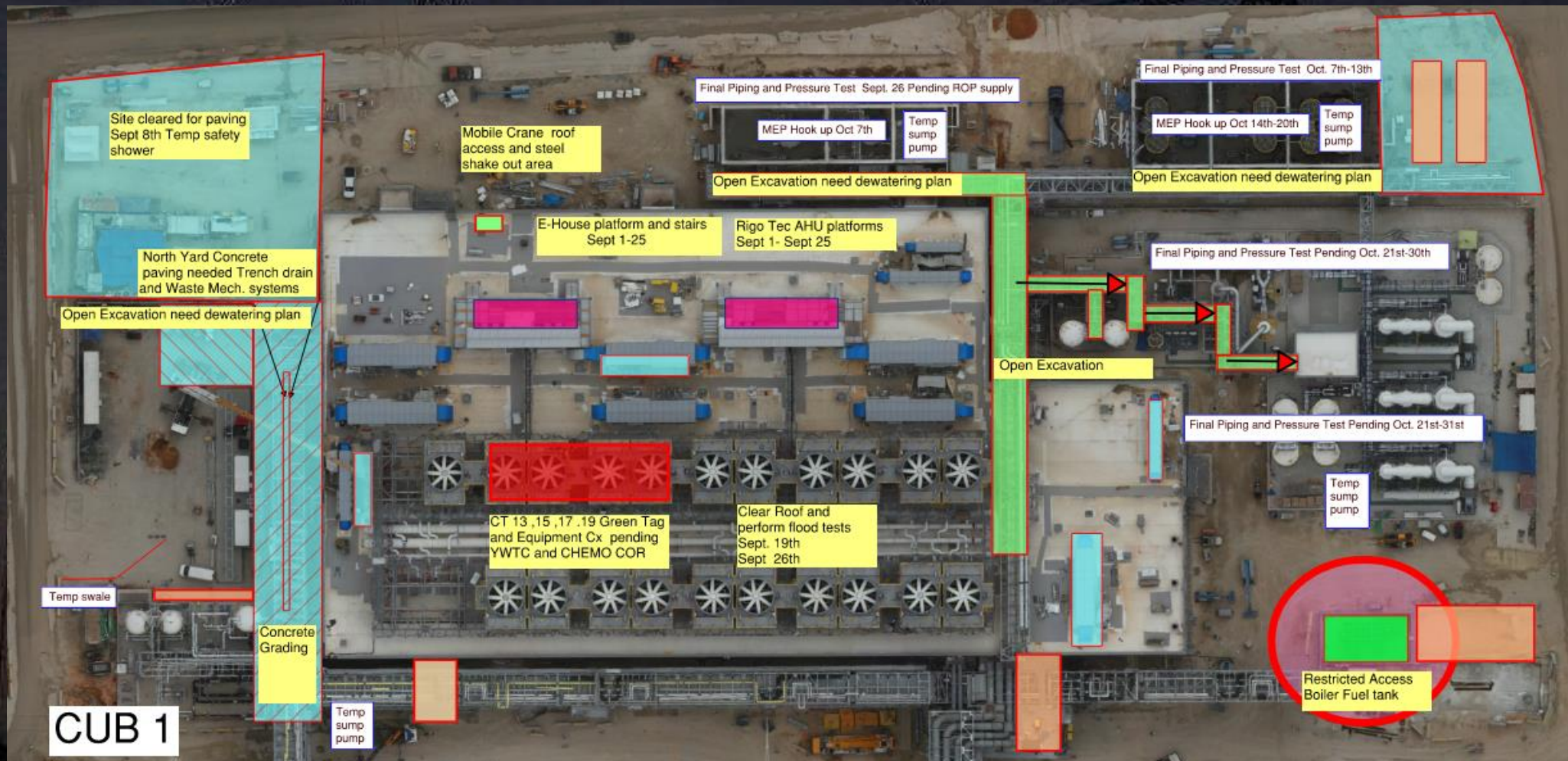




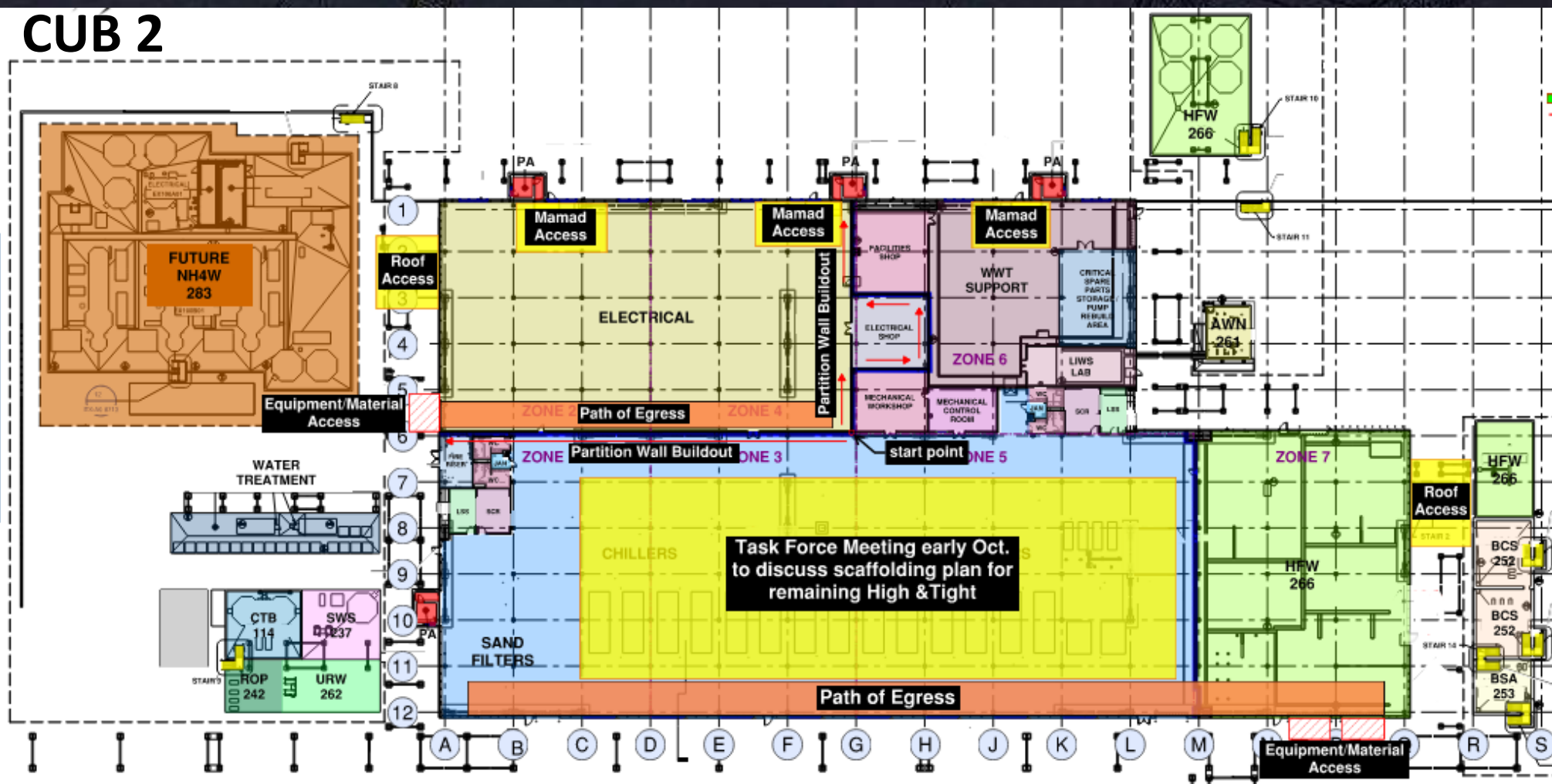


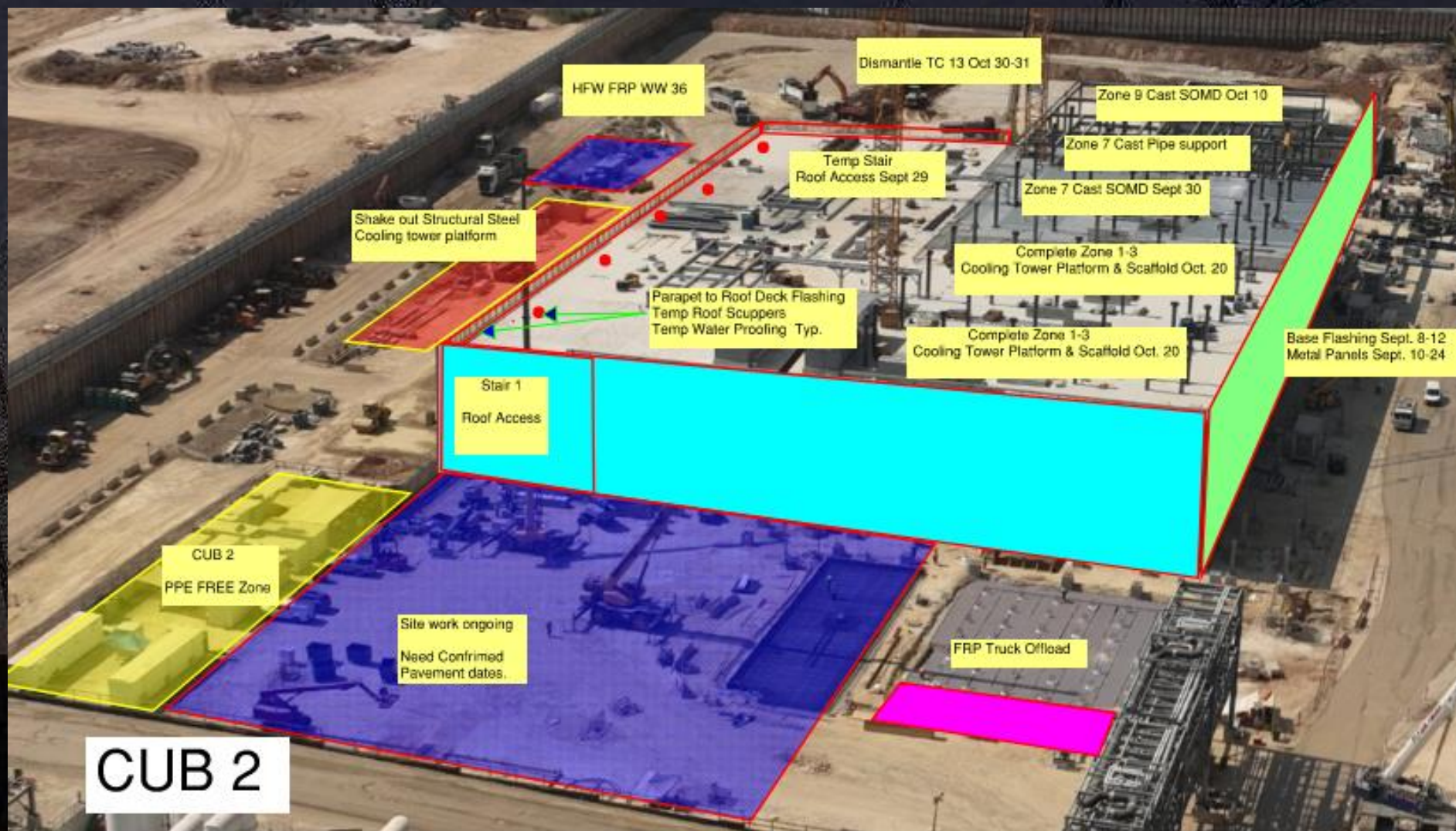






NORTH YARD







El mor:
LVSS: trays installing +
cable terminations.

Meptagon:
AIS E-gens: panel terminations
Generators: fire detection tests

TMTeam:
Paving Area
dates: 29-30.10.24
Impact: west road will be closed.





HOFFMAN CONSTRUCTION COMPANY

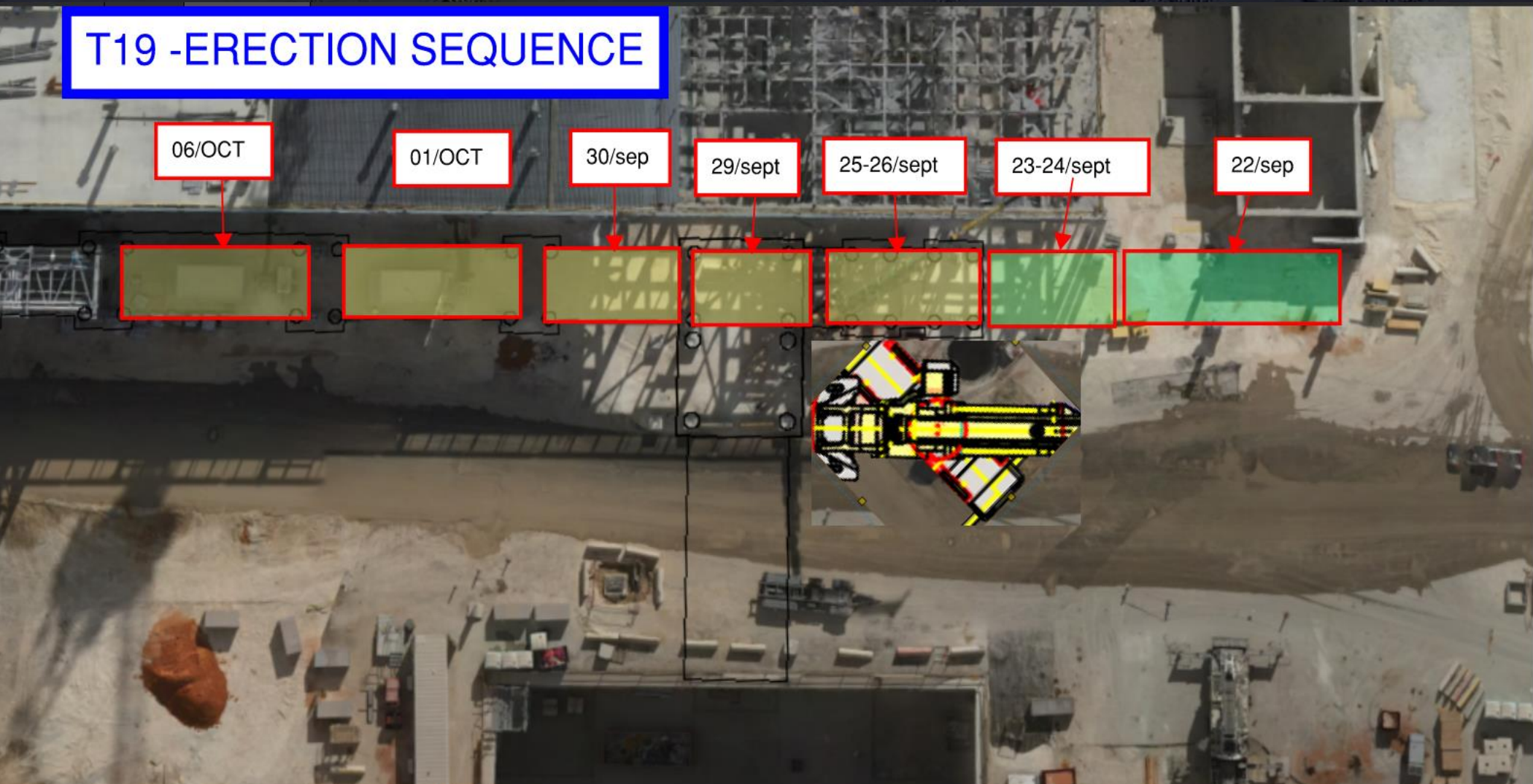


HOFFMAN
Sparrow  

NO PARKING OR MATERIAL STORAGE

BSGS

T19 -ERECTION SEQUENCE



From main kiosk

Site temporary power

Legend :

— 22KV Line

— 400V Line

109 - Kiosk

● - Lift Station

Fab 38.2

Upcoming shutdown
Fab(all floors); JG; PSSS
29.Sep 00:00 to 05:00
W1;W2;W3
E1;E2;E3
Sunday morning

Cub 2

Cub 1

TC-10
Done

TC-8
Done

TC-6
Done

TC-4
Done

630A
SW
Done

630A
NW
Done

630A
SE
Done

630A
NE
Done

TC-9
On Gen
power
10.09

TC-7
On Gen power
Done

TC-5
Done

TC-3
Done

TC-13
Done

TC-12
Done

From main

Daily Coordination Meeting

Site Logistics

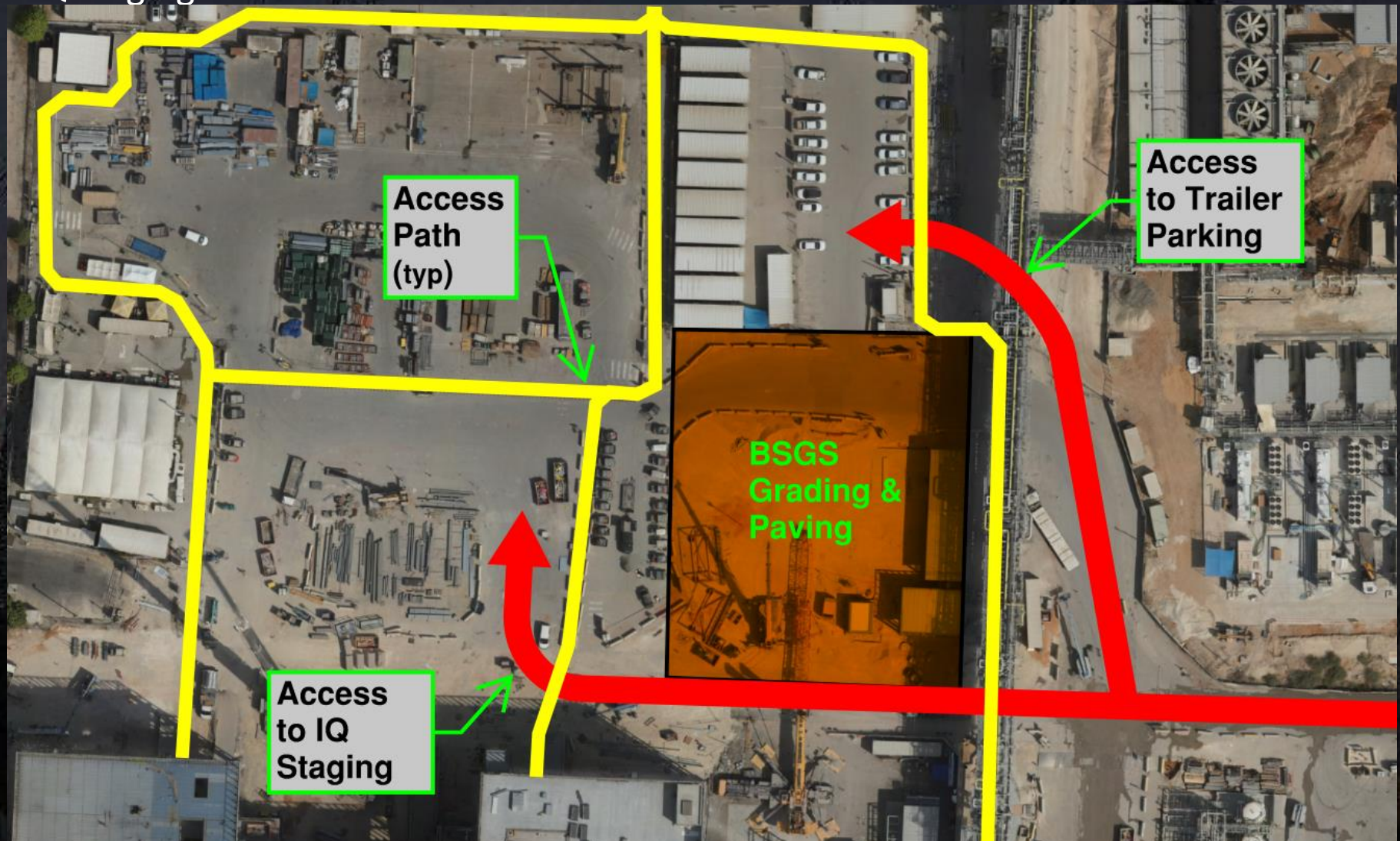
North



Daily Coordination Meeting

Site Logistics

North IQ Staging Access



Daily Coordination Meeting

Site Logistics

South

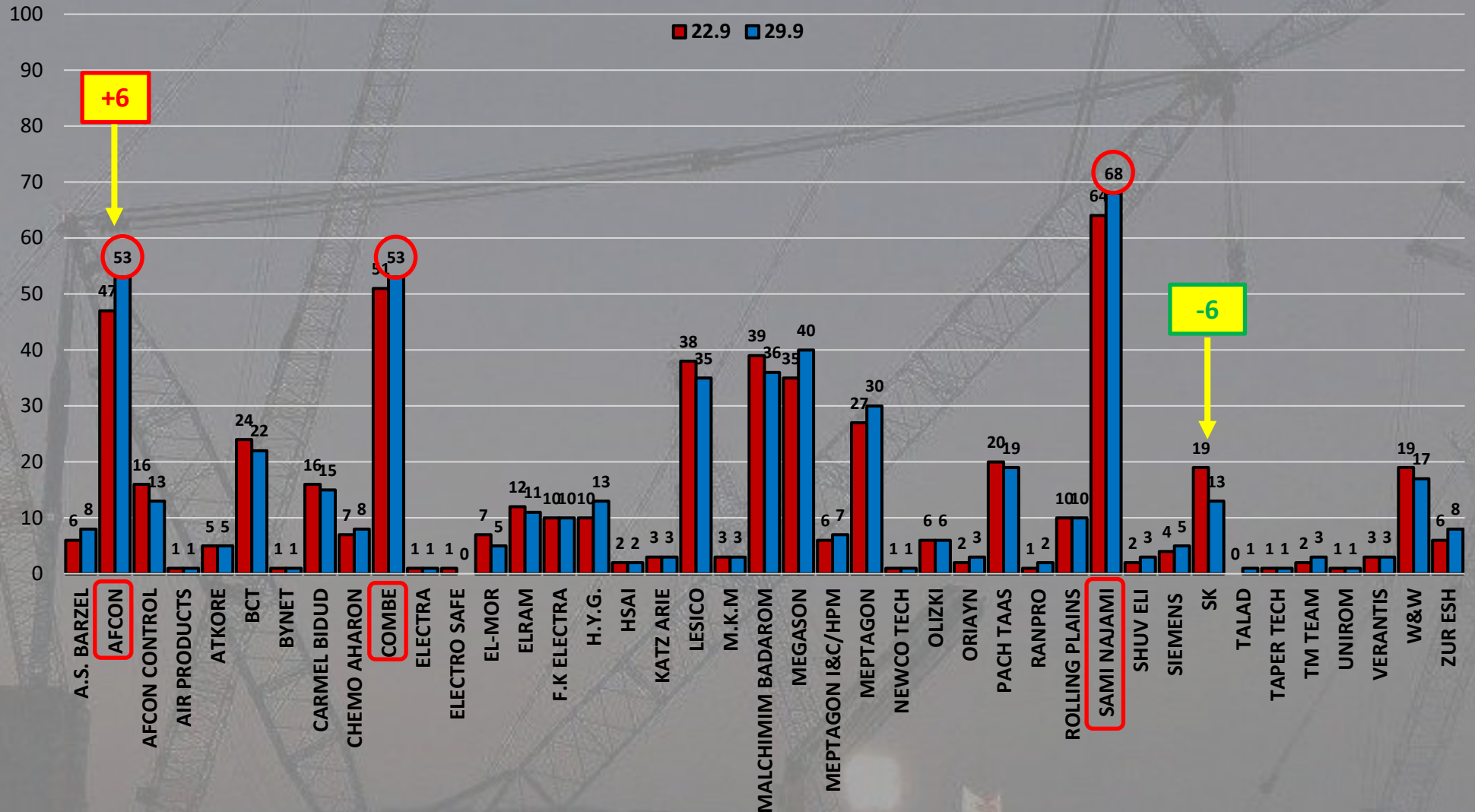




Open CORs by Subcontractor

WW 39 – 529 CORs

WW 40 – 539 CORs





Overdue CORs by Subcontractor

WW 39 – 187 CORs

WW 40 – 149 CORs



MAMAD/ SHELTER

Due to the sensitive situation, we must observe several precautions.

First, everyone can feel reassured, our site has many protected areas designated as shelters, and in places where there is no dedicated shelter, there are buildings that can serve as shelters in case of emergency.

It's important for every employee working on-site to know where the nearest protected space is located. This information should be indicated on the PTP form. Please remember that the SUT, UTILITY, and SUB FAB levels are generally considered protected spaces, and the closer you are to 17 line, the more secure you will be. In case of an alarm, do not run on-site, there is sufficient time to reach a protected area (45 seconds).

Additionally, please indicate on the PTP how many employees are on your team, as we want to ensure that no one is left behind in an emergency.

Daily Coordination Meeting



14:00 Sign In