

Daily Coordination Meeting



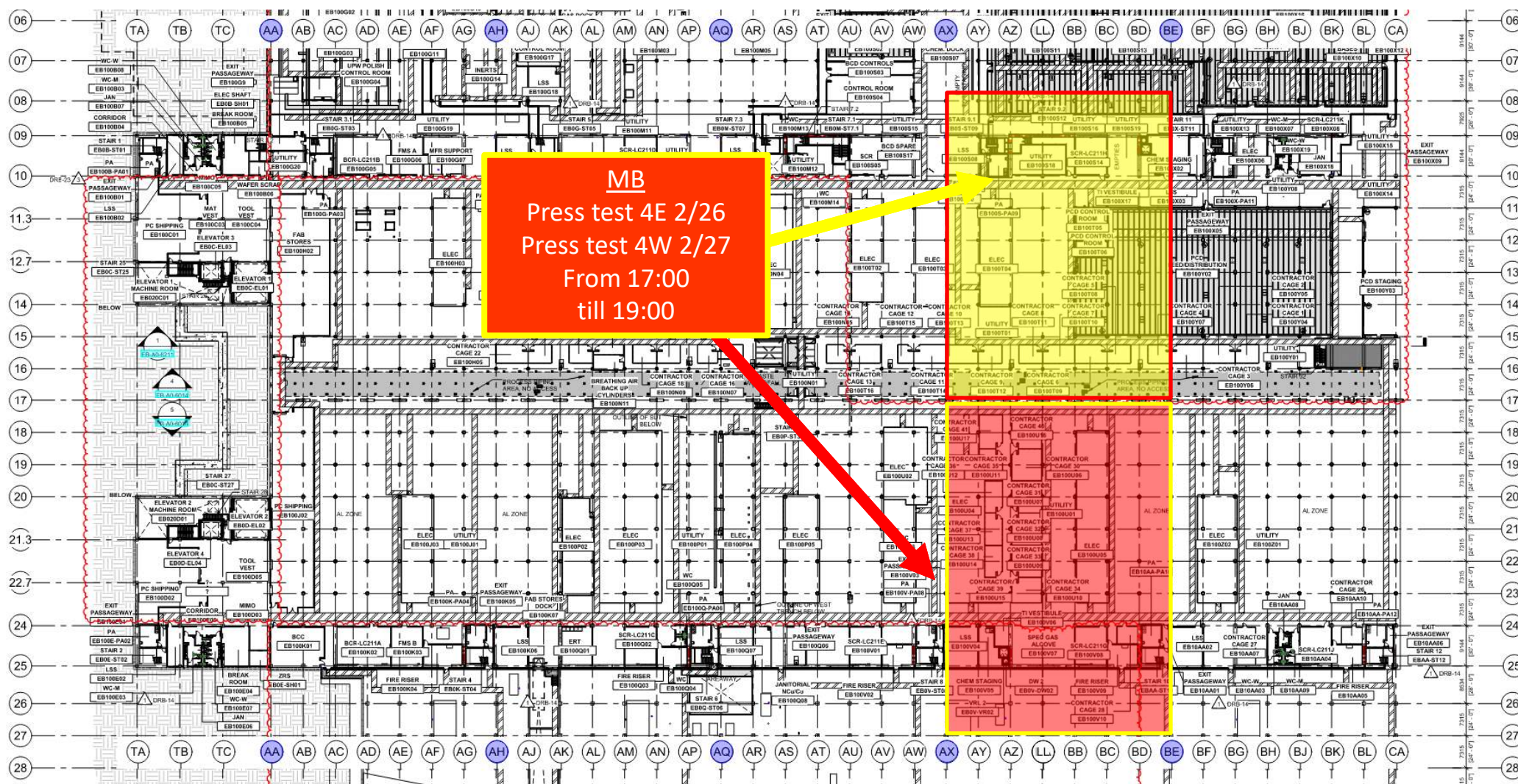
Daily Coordination Meeting

General Topics:

- Lead by example
- Ramadan starts this weekend – make sure you have coverage plans

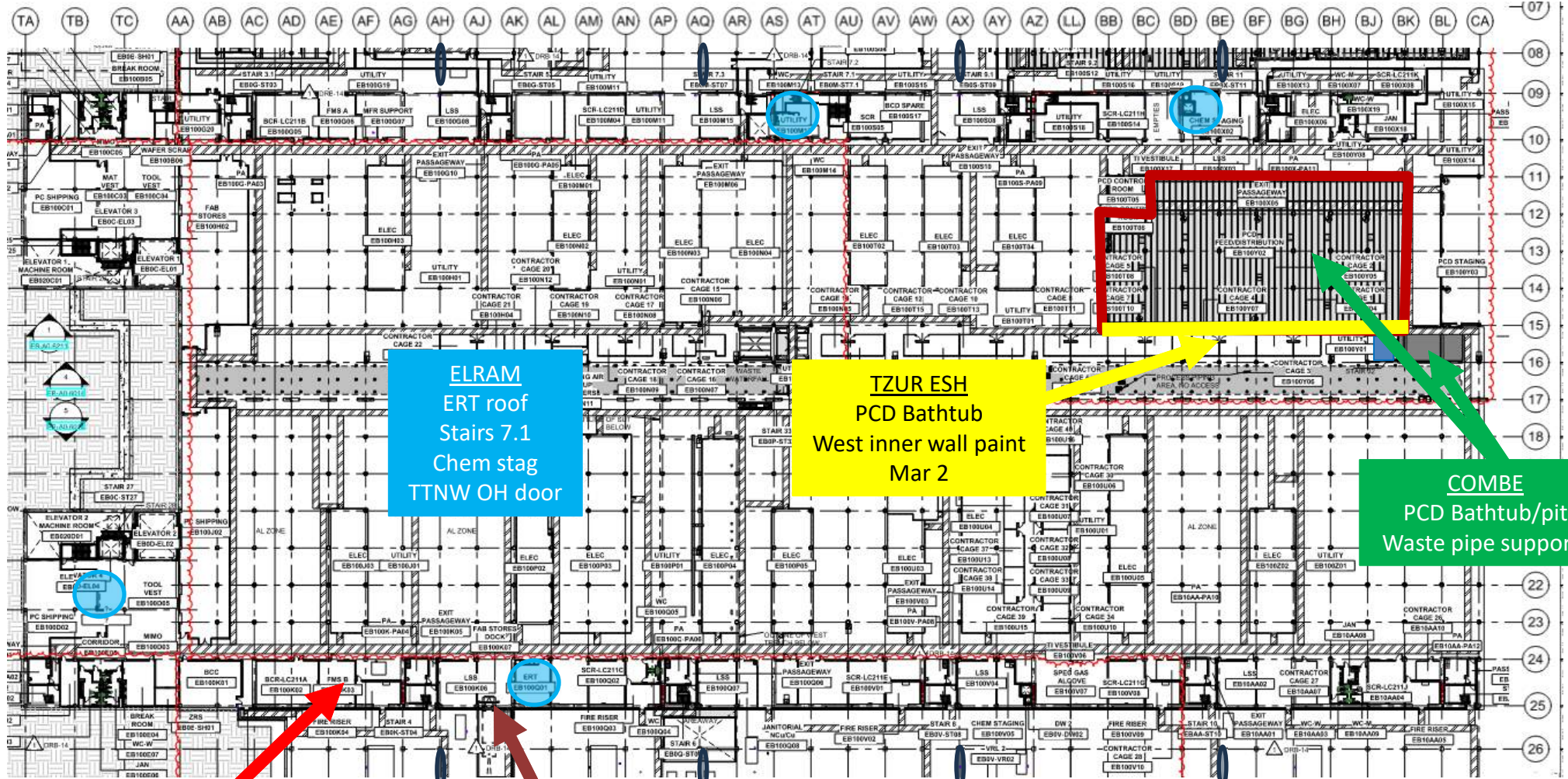


UTILITY LEVEL PRESS TEST





UTILITY LEVEL MOD1



ELRAM
ERT roof
Stairs 7.1
Chem stag
TTNW OH door

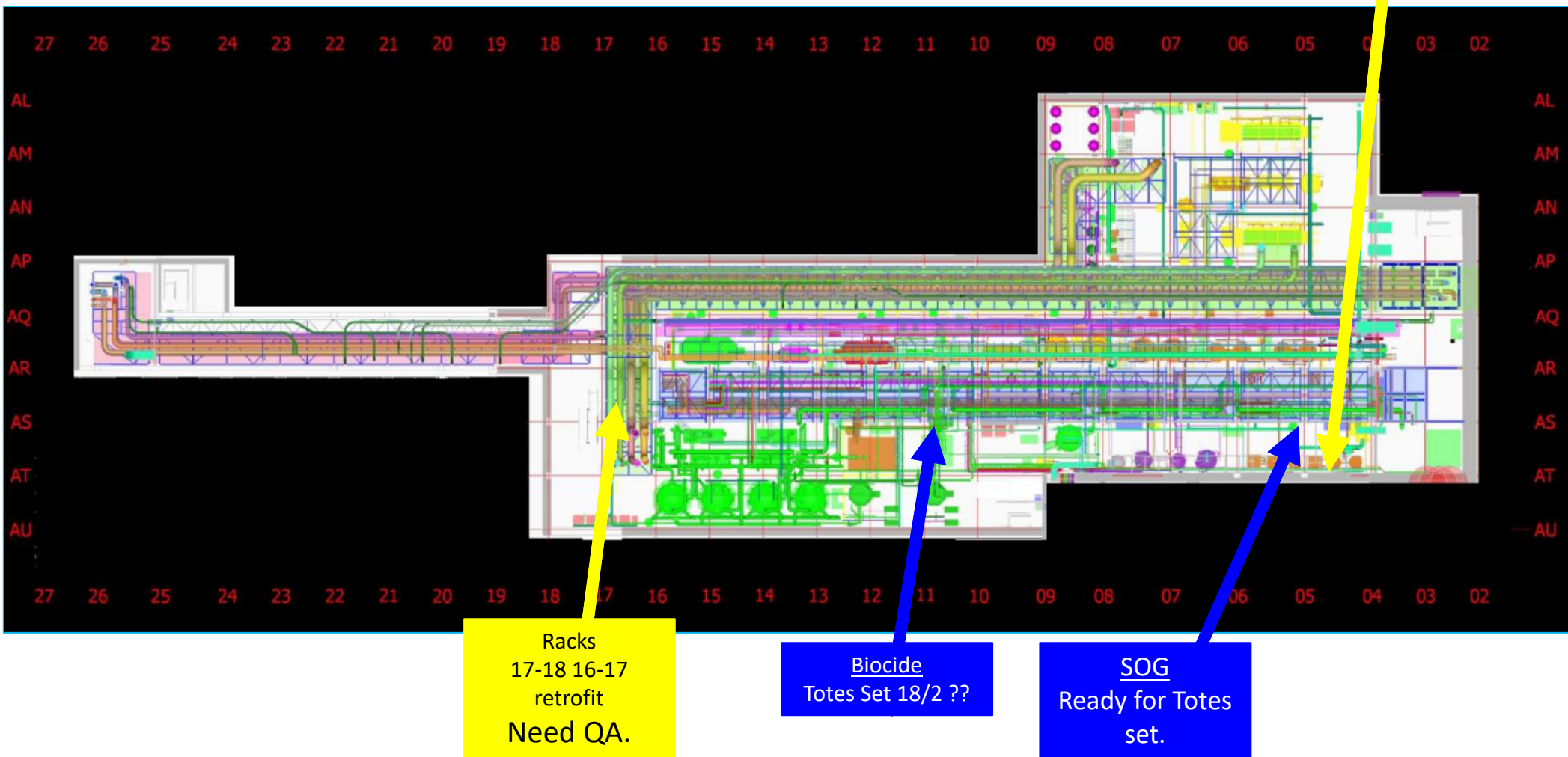
TZUR ESH
PCD Bathtub
West inner wall paint
Mar 2

COMBE
PCD Bathtub/pit
Waste pipe supports

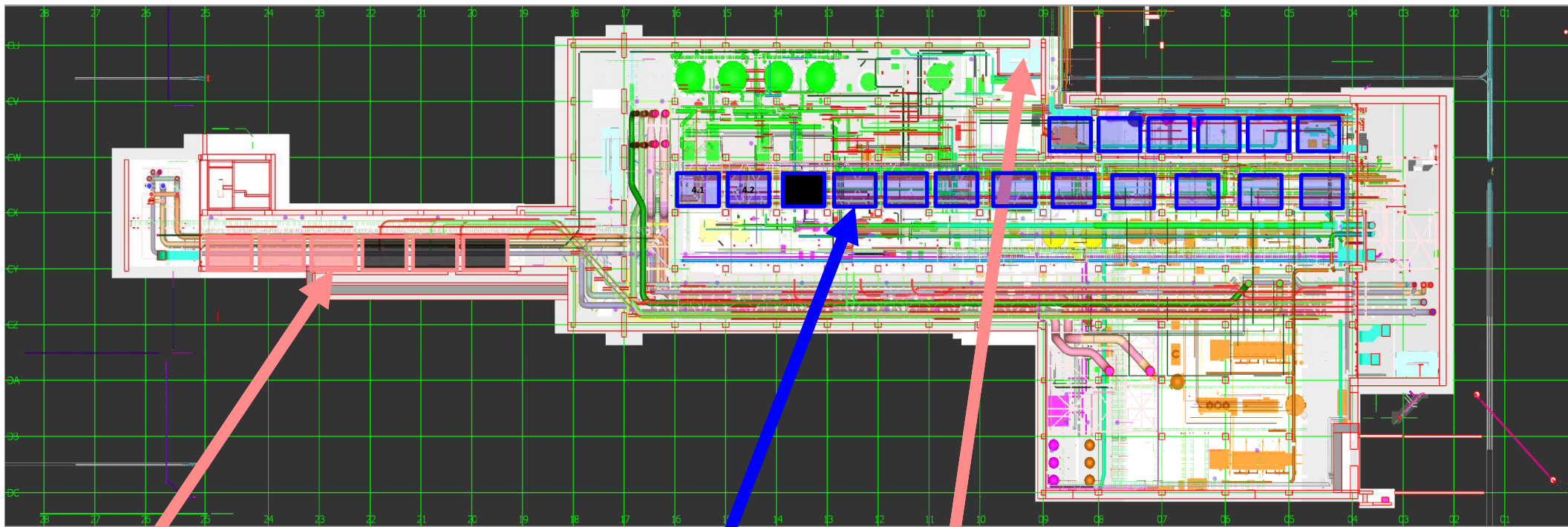
CARMEL DUCT
Remove duct for RHS install
Held

HYG
Install RHS for loading dock
start Mar 2

SUT 38.1 LEVEL



SUT 38.2 LEVEL

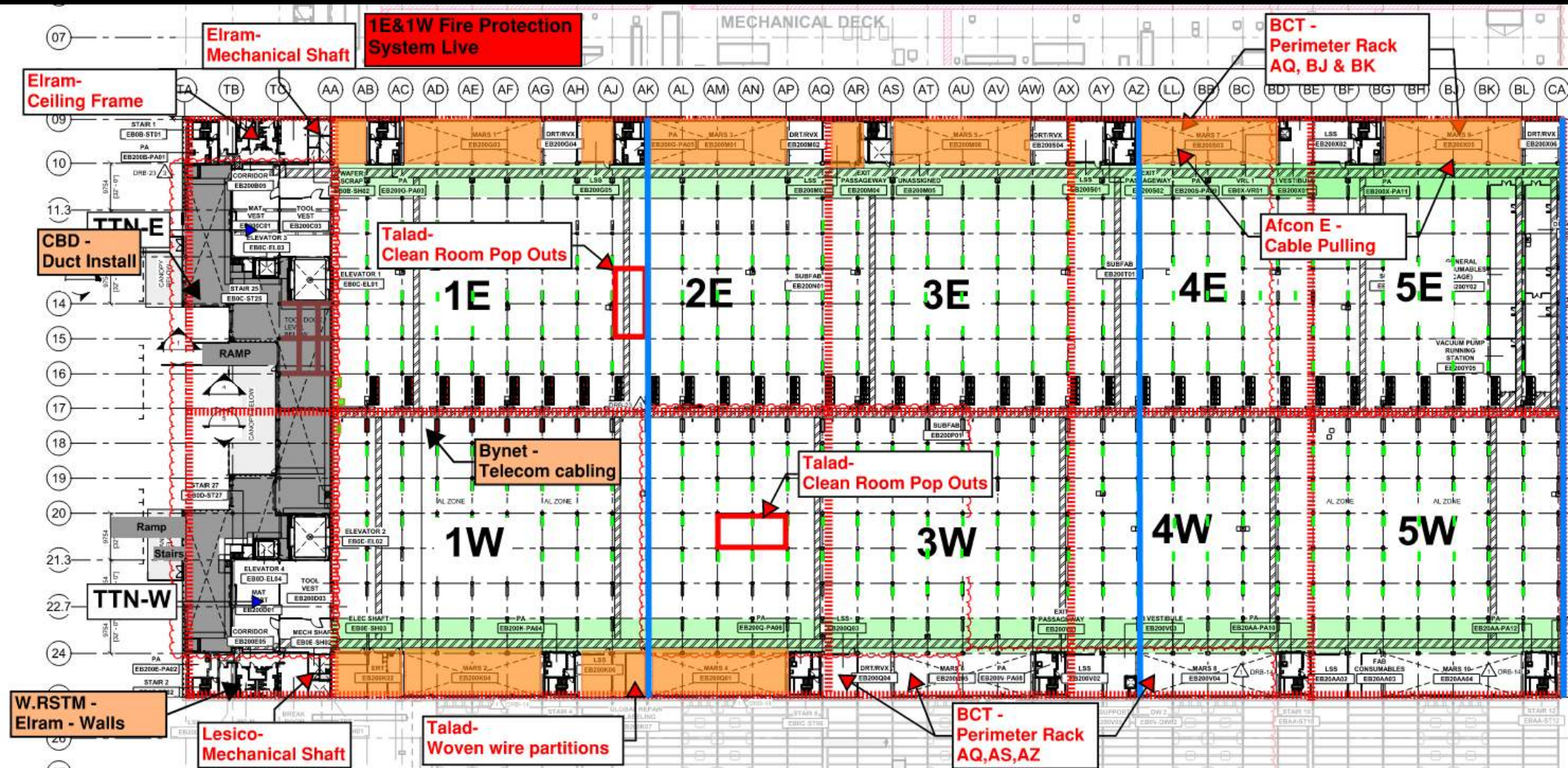


Rack 4 Upper
Module 4.4

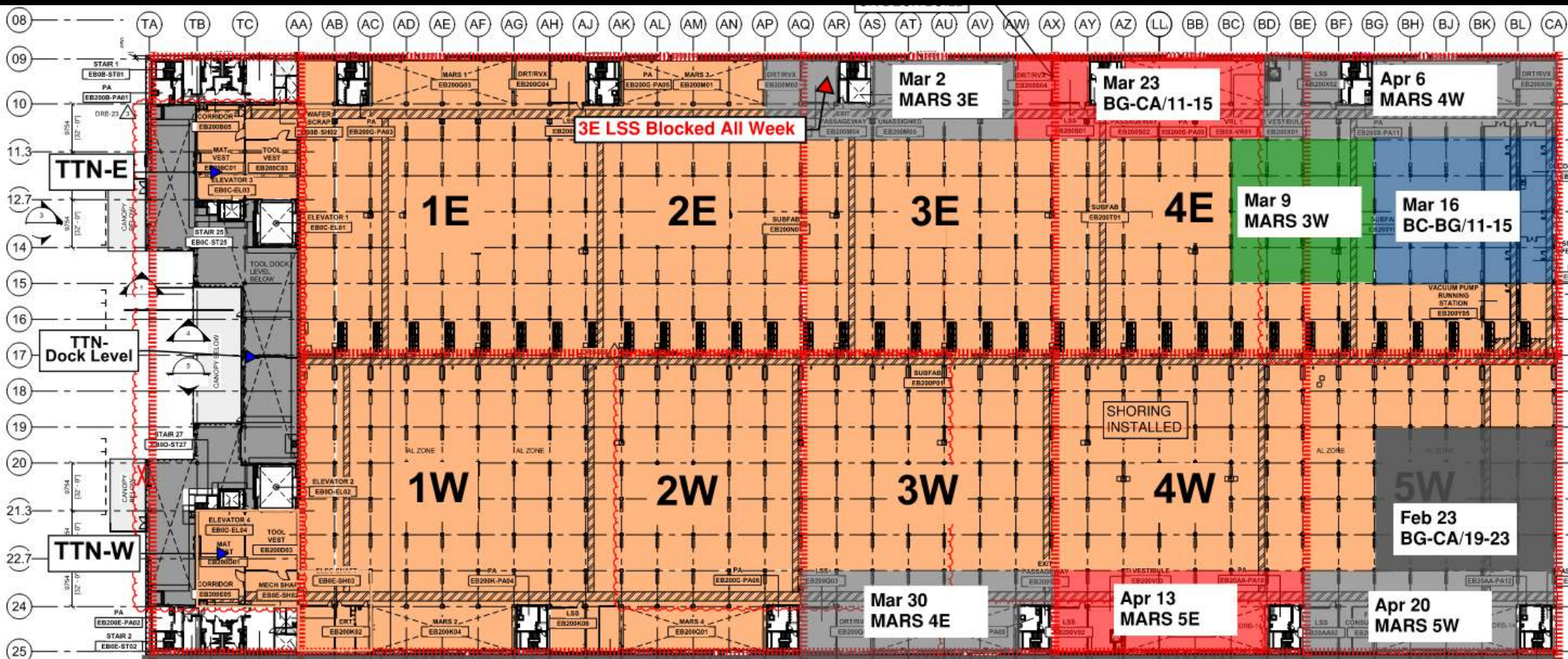
Stairs Open

16.2.2025	Module 1
17.02.2025	Module 2
24.02.2025	Module 3
25.02.2025	Module 4
03.03.2025	Module 5
04.03.2025	Module 6

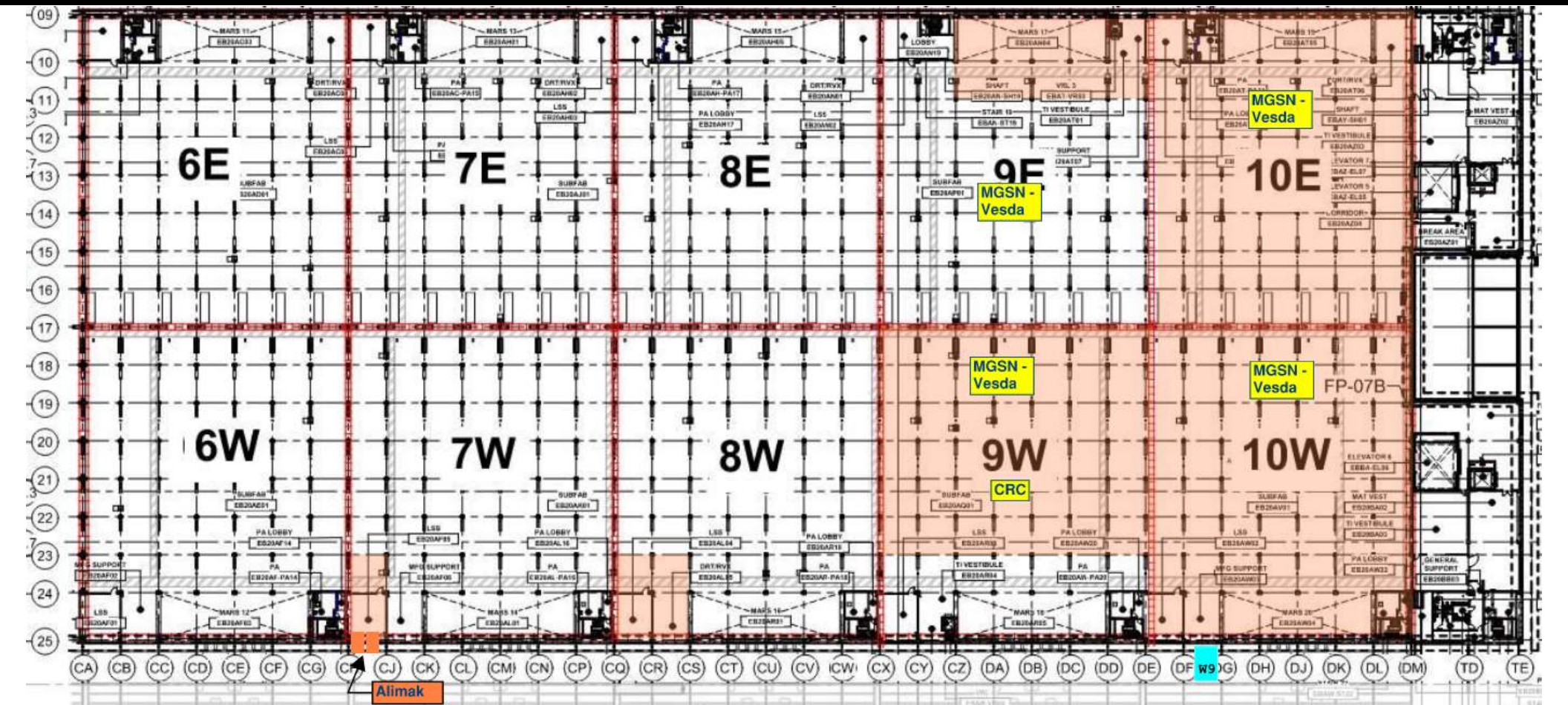
SUBFAB BUILDOUT MOD 1



SUBFAB CRC TOPCOAT



SUBFAB BUILDOUT MOD 2



HEPA Vacuum Certification

March 2025 certification will be performed as follow:

Monday - March 3rd at 07:30-08:15 AM
Wednesday - March 5th at 07:30-08:15 AM

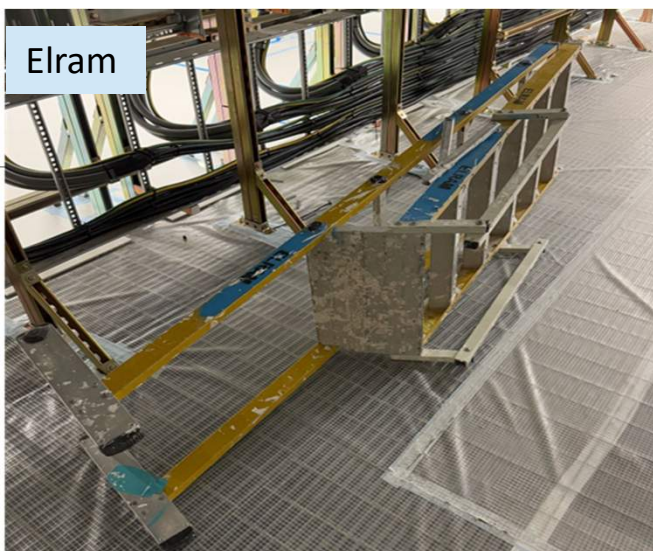
The tests will take place at the clean-room South entrance line 17



Afcon



Elram



Talent



Carmel bidud

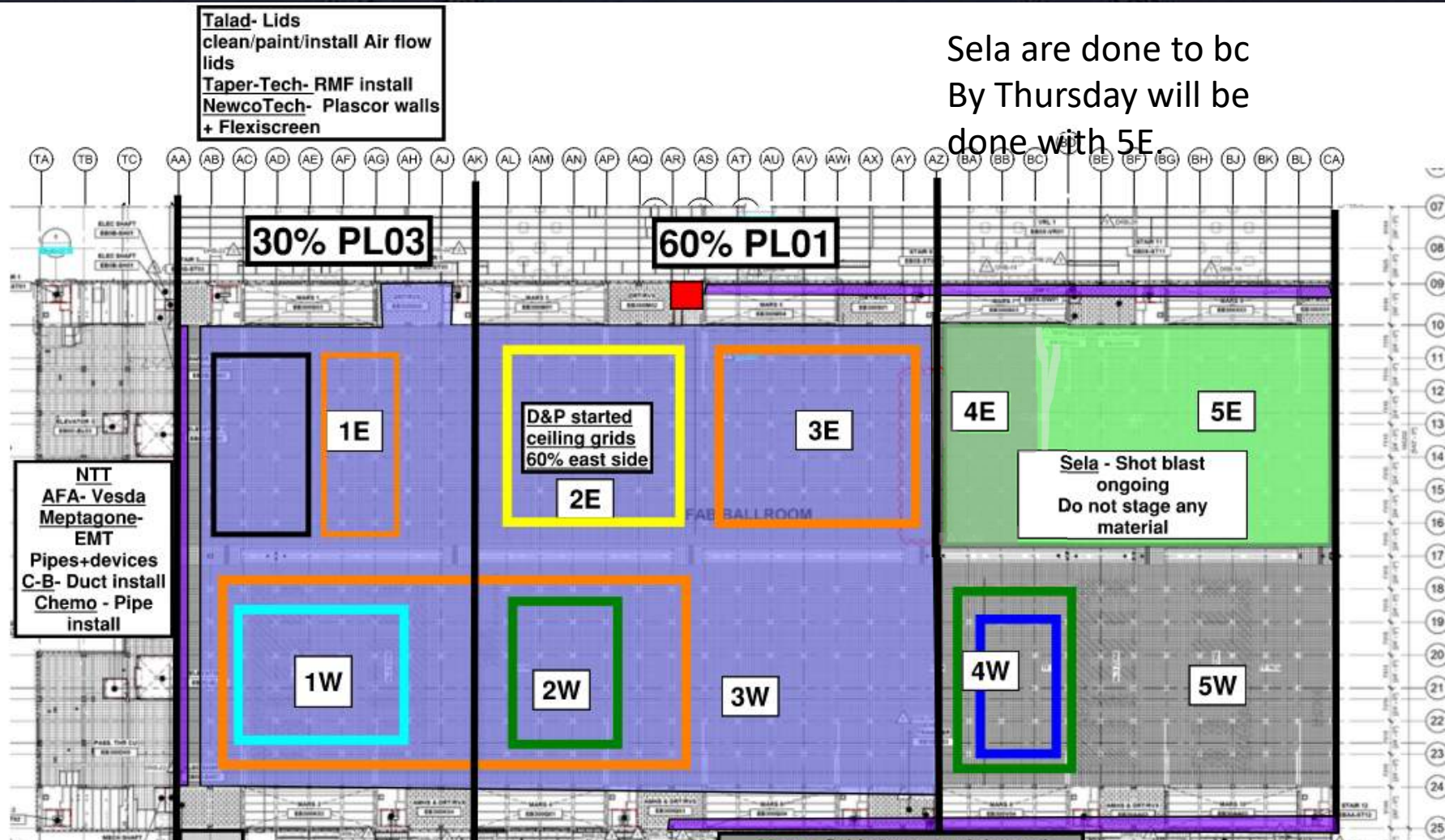


MLB



Afcon





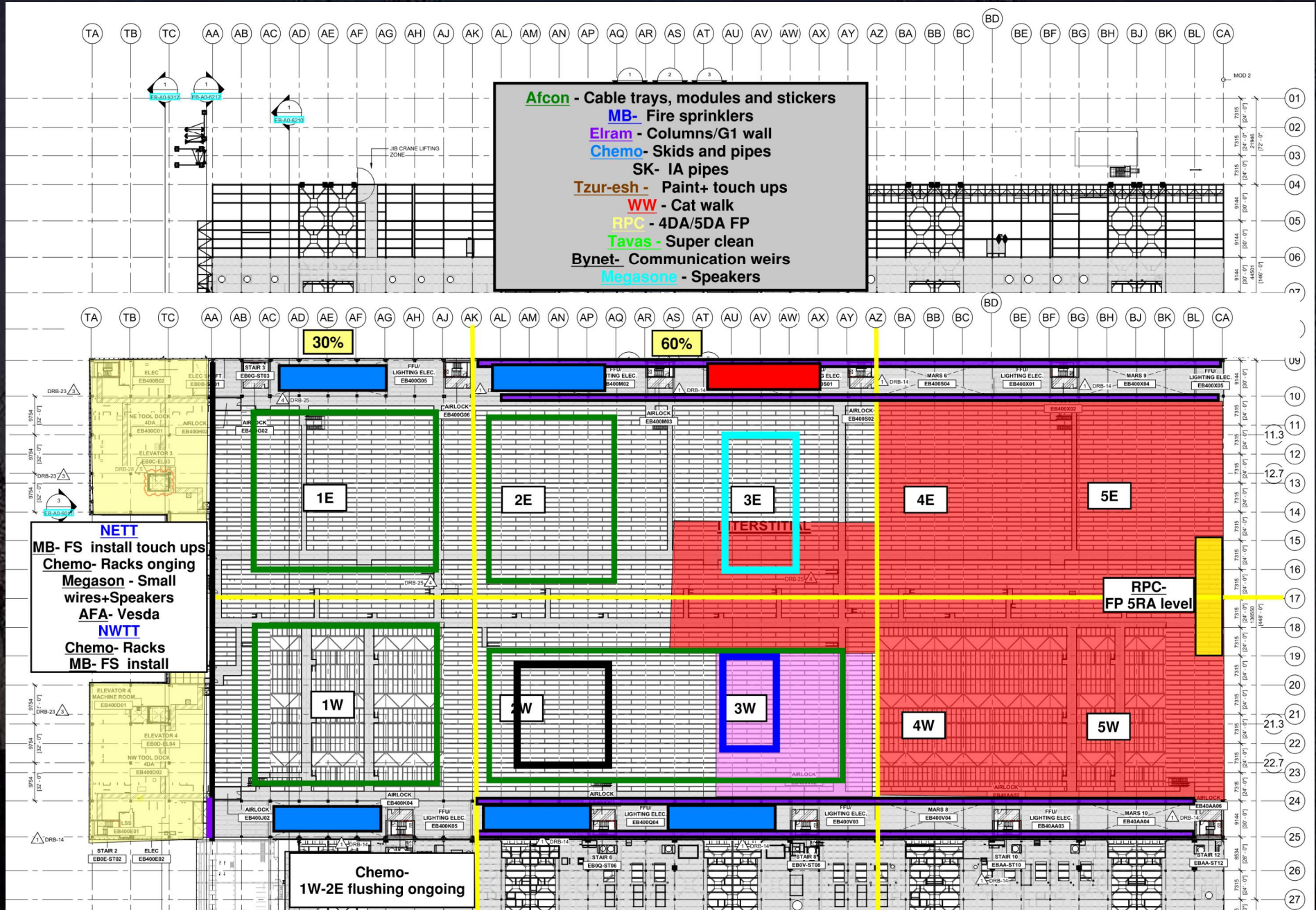
Sela are done to bc
By Thursday will be
done with 5E.

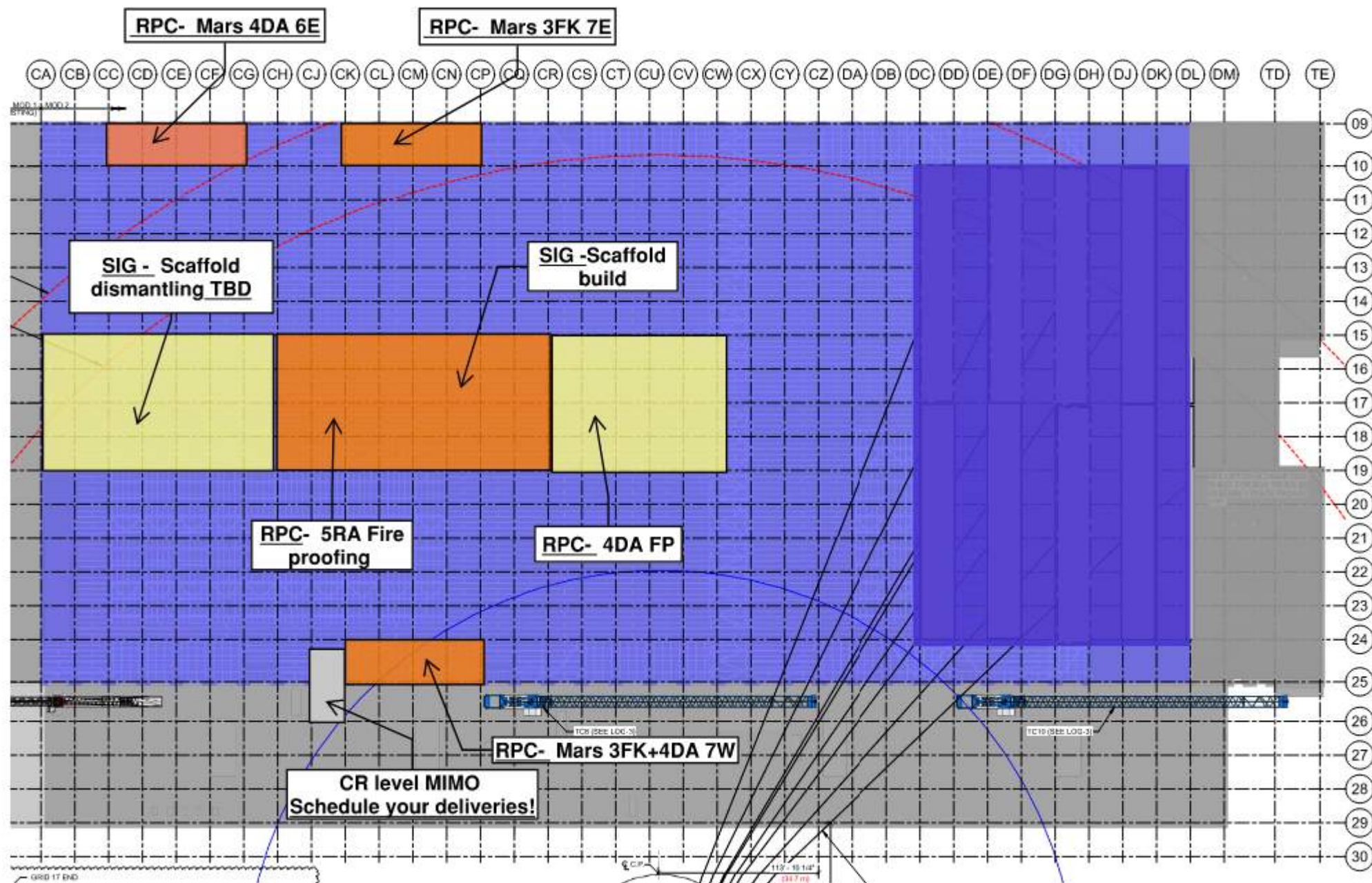
NTT
AFA- Vesda
Meptagone-
EMT
Pipes+devices
C-B- Duct install
Chemo - Pipe
install

Link
SIG- Scaffold tomorrow will be moved
all materials/ladders needs to be cleared
P-T - Duct dismantle needs to be done
MB- FS ongoing
D&P- Scaffold will move for blades drilling
Sela- Waiting for QC

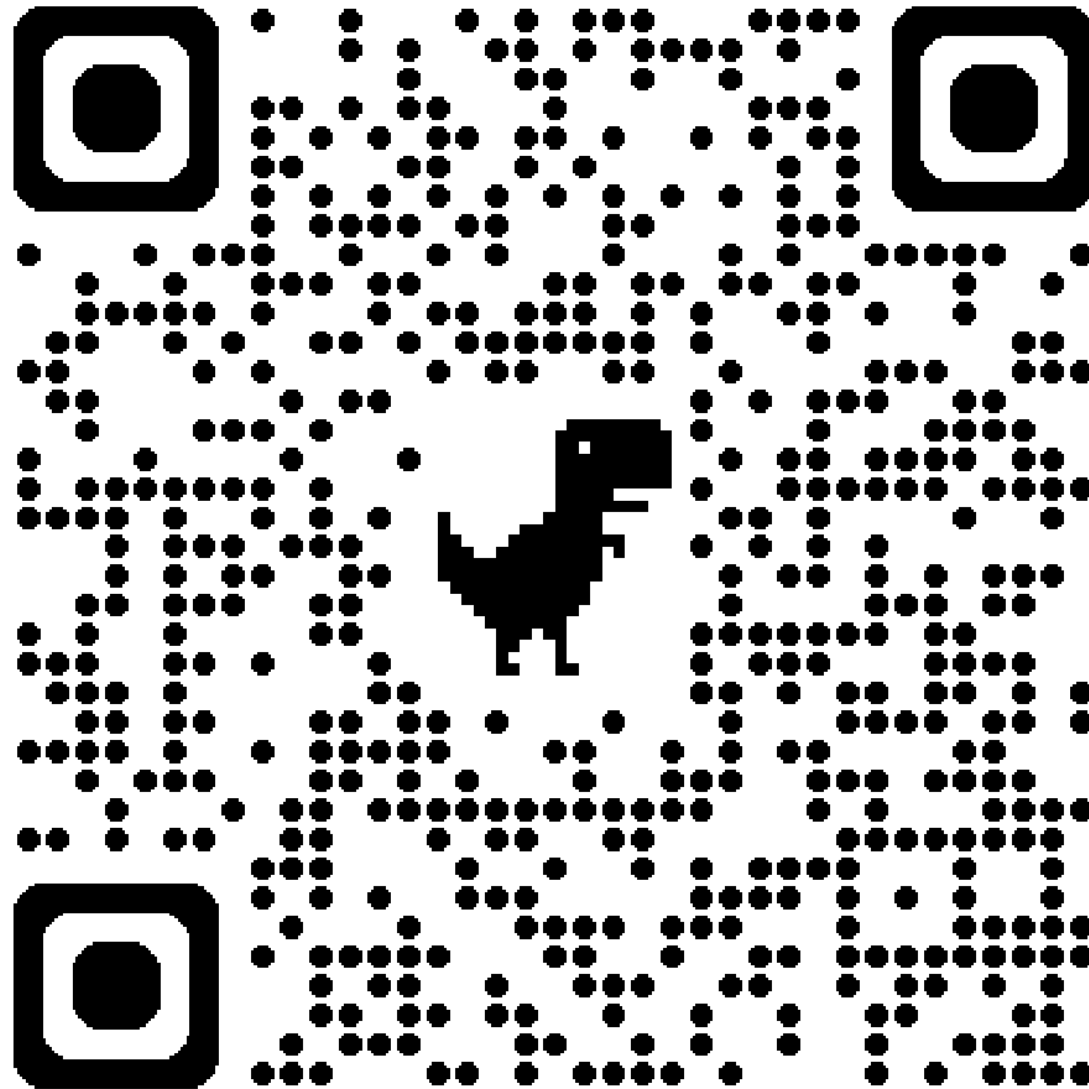
SIG-tomorrow 11:00 handrails
On mobile scaffold going
down.

Afcon - Cable trays, modules and
stickers
MB- Pipes and drops
Elram - Columns/shaft walls/G1 wall
Meptagon - I&C+ Zero ref. pipes
D&P - Stick build+ separation
walls+FFU
Tzur-esh - 1W blade paint
HYG - Stairs 7.3 starts WW04
Taper - UPN install, ceiling grid, lids
removal
Taper - Super clean
Taper-Tech - RMF
Talent - Super clean

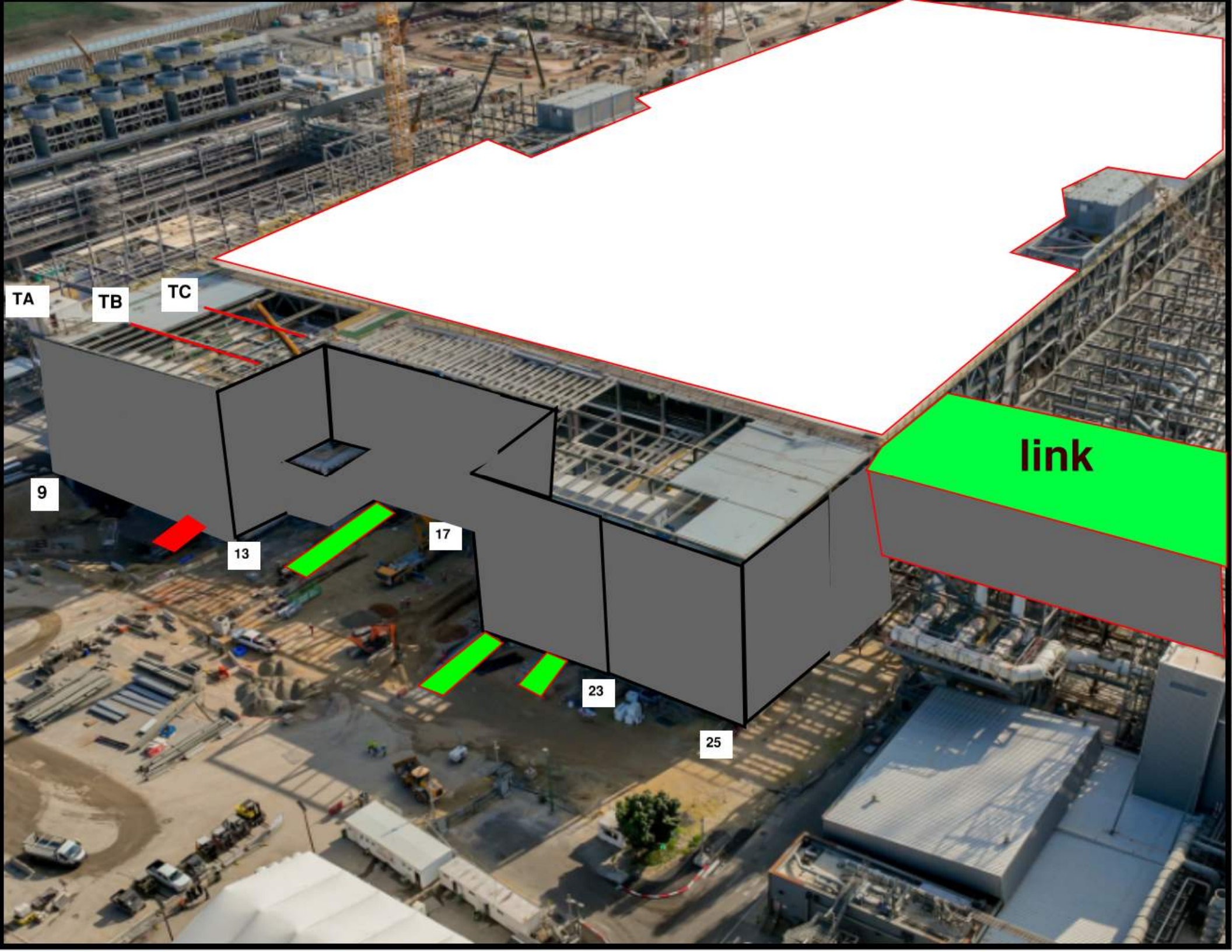




Siding Penetration Request Form



Subcontractor must fill out and submit all required cells in order to get a penetration cut through the siding.



TA

TB

TC

9

13

17

23

25

link



MOD 2 EASTSIDE GIRTS/SIDING

2752/ 2751	2742/ 2741	2732/ 2731	2722/ 2721	2712/ 2711	2552/ 2551	2542/ 2541	2532/ 2531	2522/ 2521	2512/ 2511	2502/ 2501
---------------	---------------	---------------	---------------	---------------	---------------	---------------	---------------	---------------	---------------	---------------

READY FOR GIRTS	
INSTALLING GIRTS	
READY FOR PANELS	
PANELS INSTALLED	

MOD 2 WESTSIDE GIRTS/SIDING

READY FOR GIRTS 

INSTALLING GIRTS 

READY FOR PANELS 

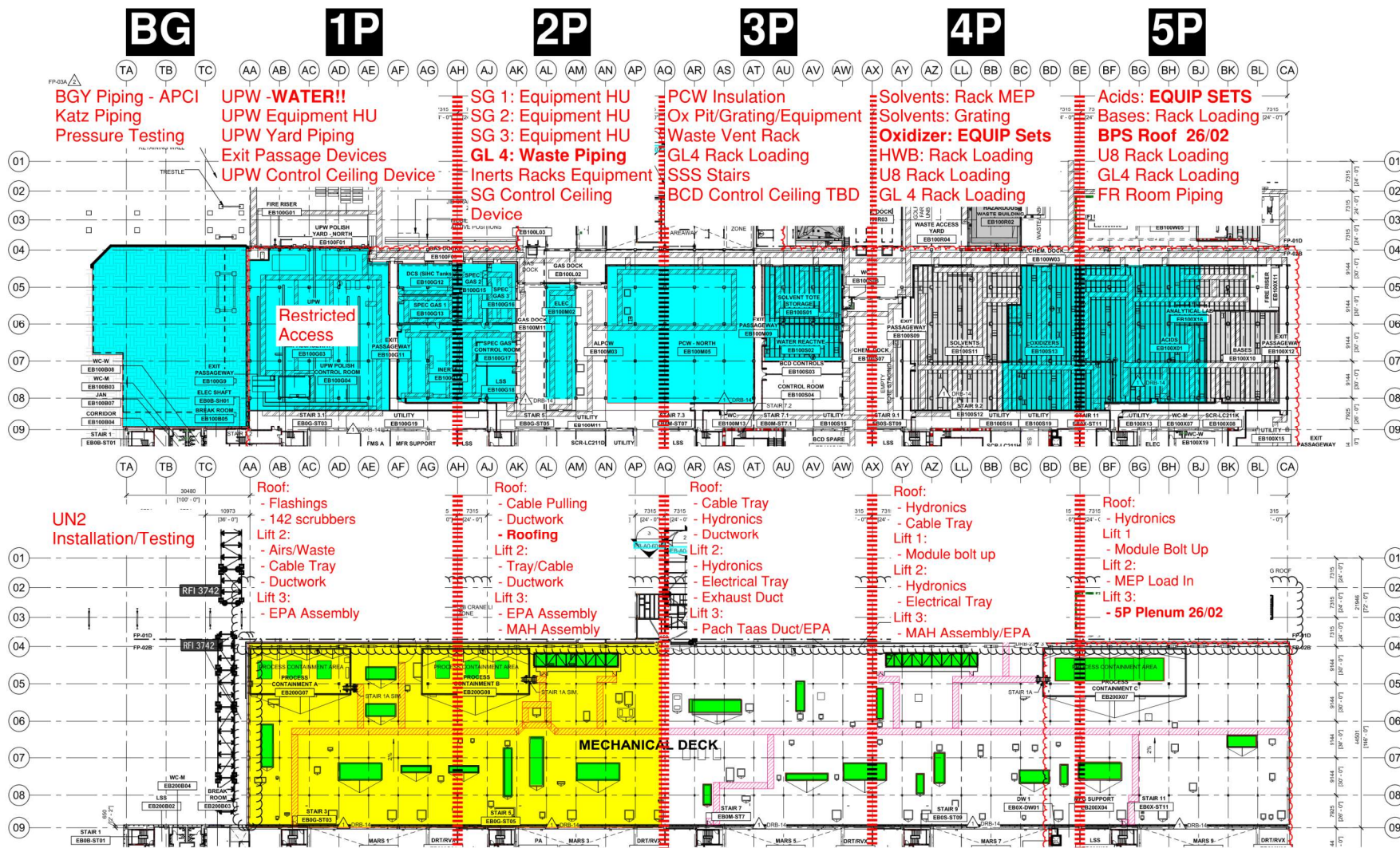
PANELS INSTALLED 

2602/ 2601	M I M O	2612/ 2611	MIMO 2622/ 2621	2632/ 2631	2642/ 2641	2652/ 2651	2812/ 2811	2822/ 2821	2832/ 2831	2842/ 2841	2852/ 2851
---------------	------------------	---------------	-----------------------	---------------	---------------	---------------	---------------	---------------	---------------	---------------	---------------

PSSS.1

Utility Level 1YA

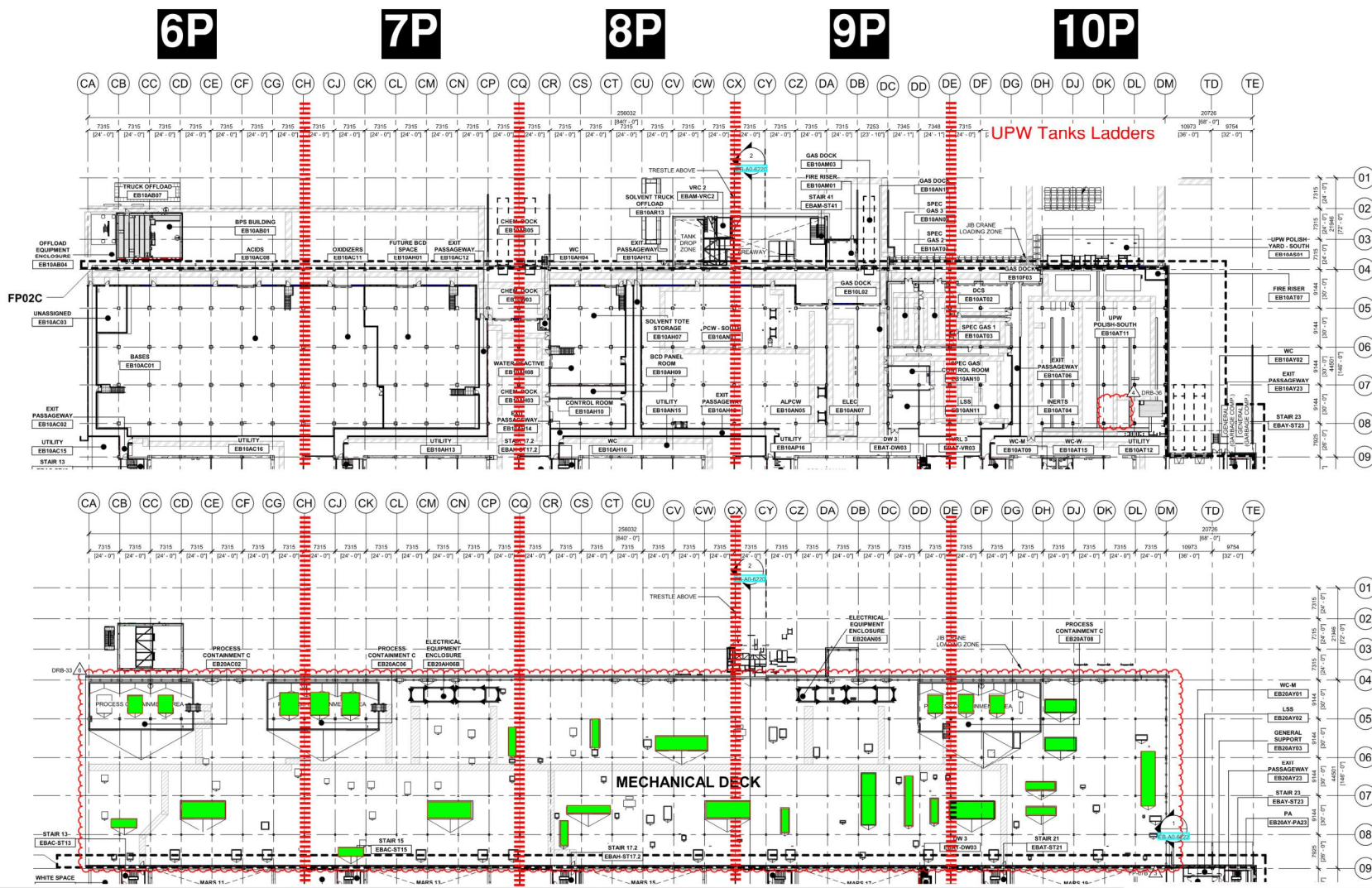
PSSS Roof 2SA



PSSS.2

Utility Level
1YA

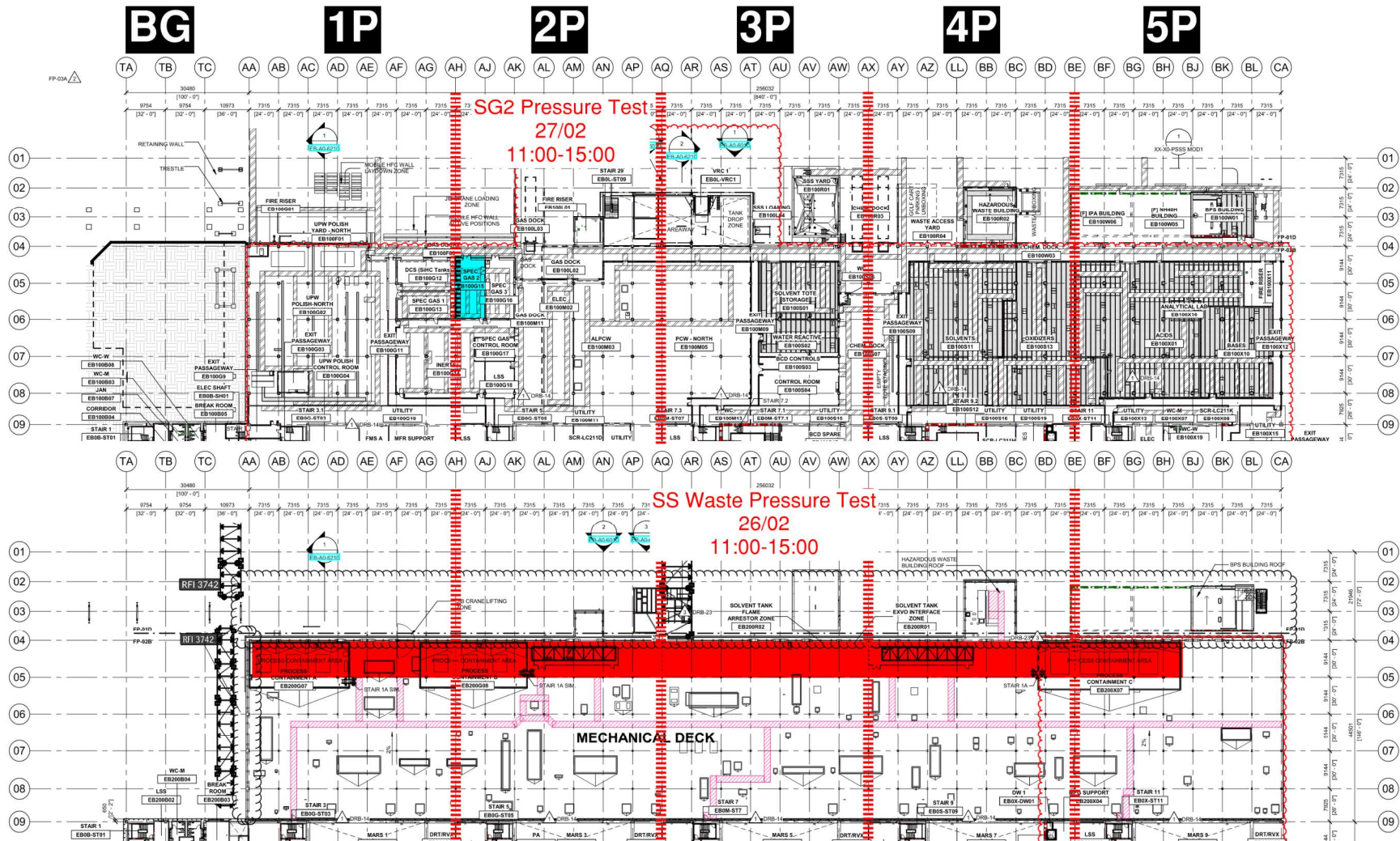
PSSS Roof
2SA



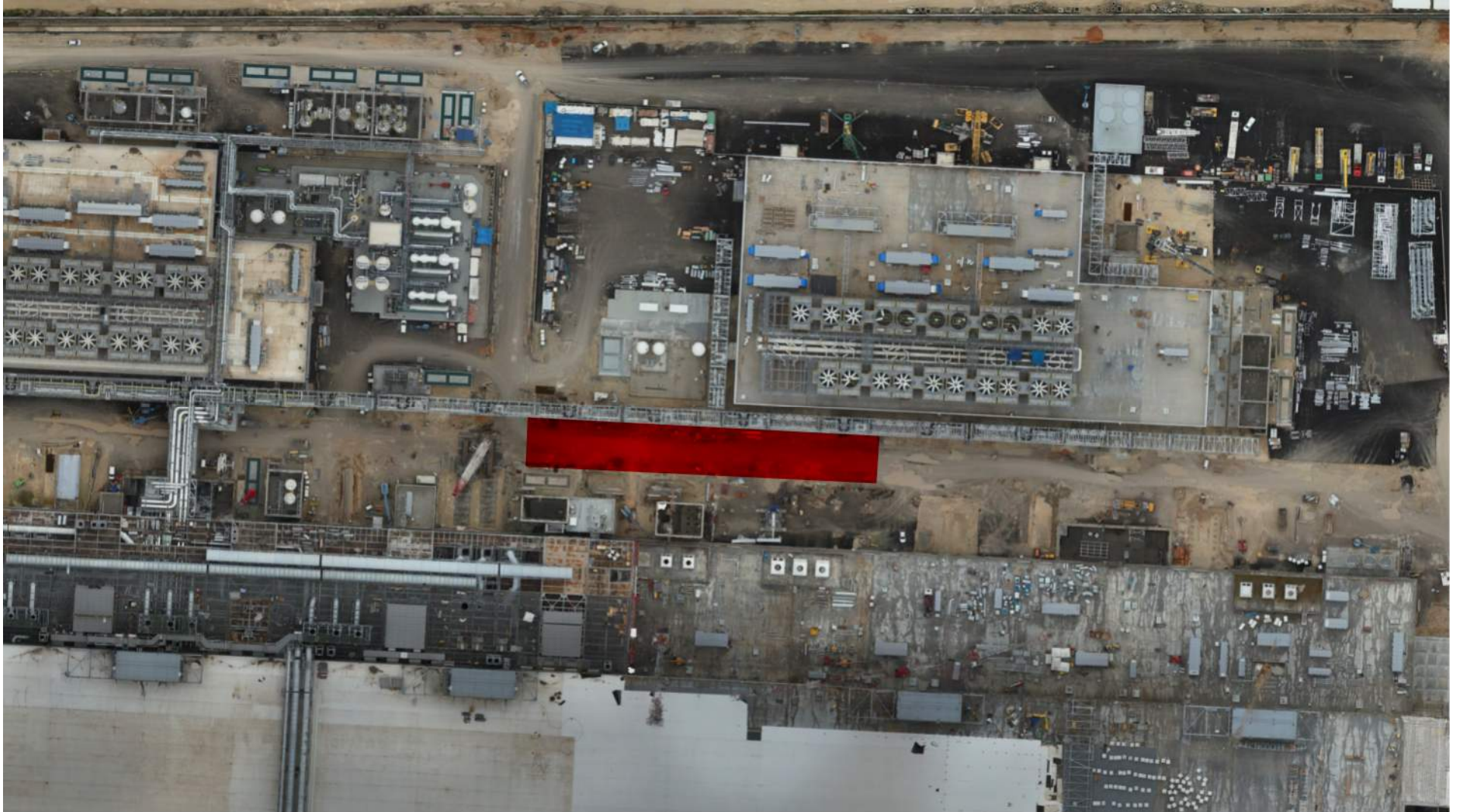
PSSS Pressure Testing

Utility Level
1YA

PSSS Roof
2SA



3800 Dismantle WW10



IF YOU ARE WORKING NIGHT
SHIFT ON THE PSSS NEXT WEEK
MOVING FORWARD YOU MUST
COME DISCUSS WITH ETHAN
WOLERY!!!



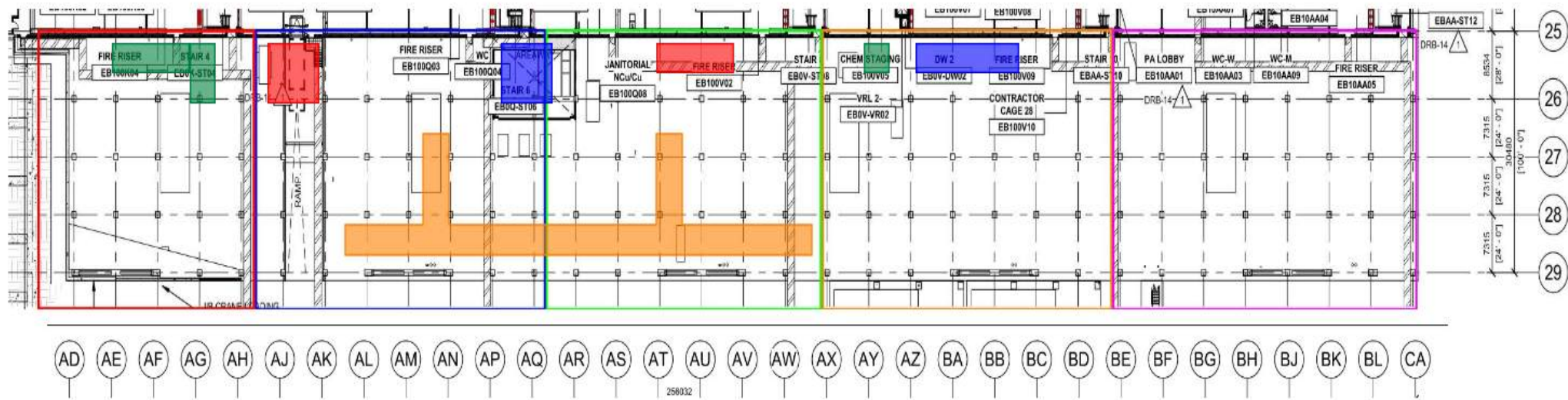
WJG – UL

* Megason - working on fire detection and alarm

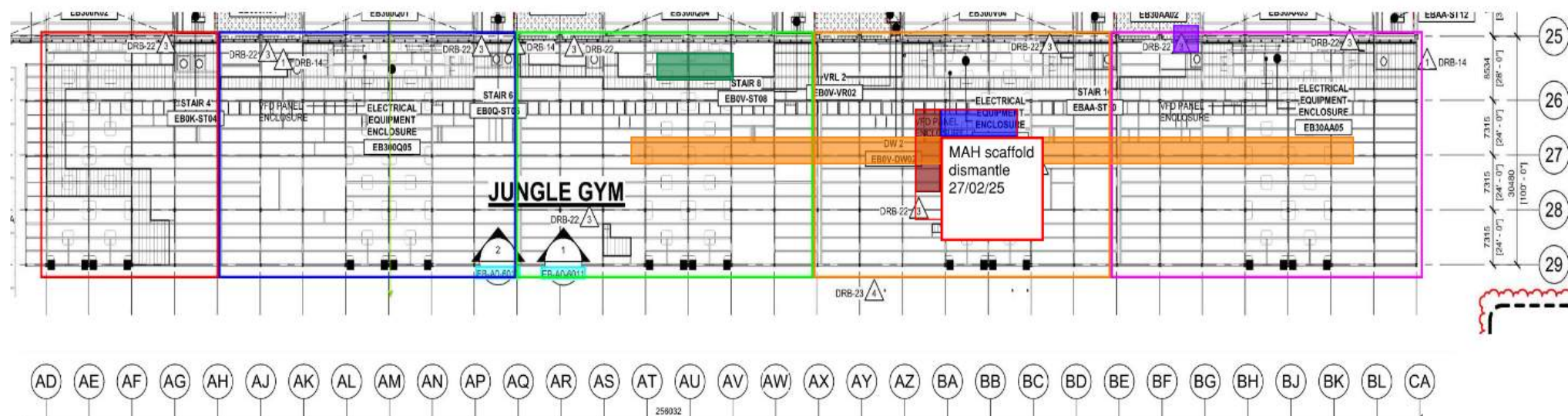
* Afcon - installation of permanent lighting and cable pulling.
* Pach Taas - installation of modules in west SUT.
* Carmel Bidud - working on dampers and ducts into the FAB

* Afcon - installation of permanent lighting and cable pulling to the fixtures.
* Pach Taas - installation of wall penetrations

* SK - installation of 3" cooper pipe
* W&W - welding of shims for outriggers

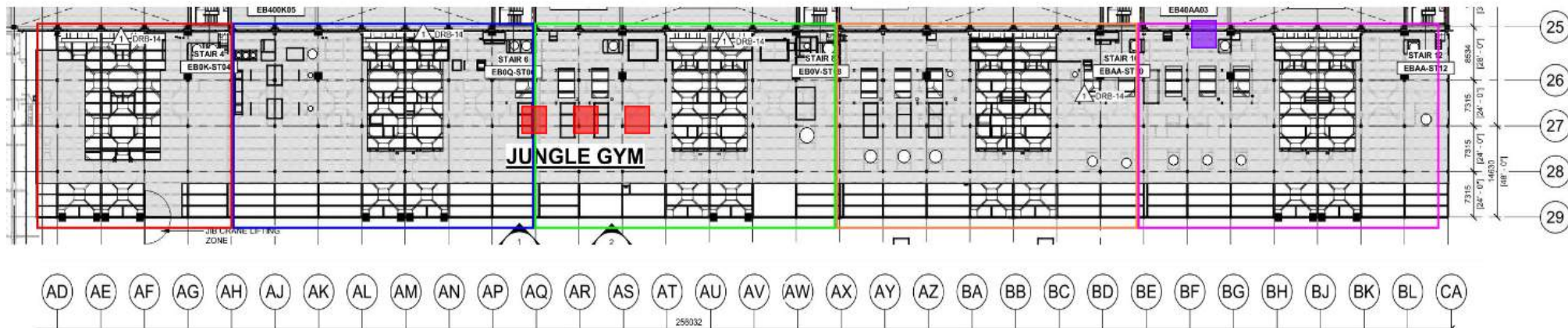


		<p>* Pach Taas - installation of 1800 mm module and WP.</p>	<p>* SK - installation of CRW pipes to MAH.</p> <p>*Afcon - pulling cables and doing connections to MAH.</p> <p>*4J MAH scaffold will be dismantled on 27/02/25</p>	<p>* Chemo Aharon - finishing Insulation and filling UPN 117 with water for preassure test.</p> <p>* Chemo - pipe fitting for MARS pipes</p>
--	--	---	---	--



WJG – Lift 3

		* Pach Taas - working on bypass ductworks.		* Chemo - pipe fitting for MARS pipes
--	--	--	--	---------------------------------------



Pressure check for UPN 117 – UL

UL level(West JG) - Grids AL to BJ, 25 to 27



Pressure check for UPN 117 – LIFT2

Lift 2 - Grids AL to BJ, 25 to 27



Crane logistics

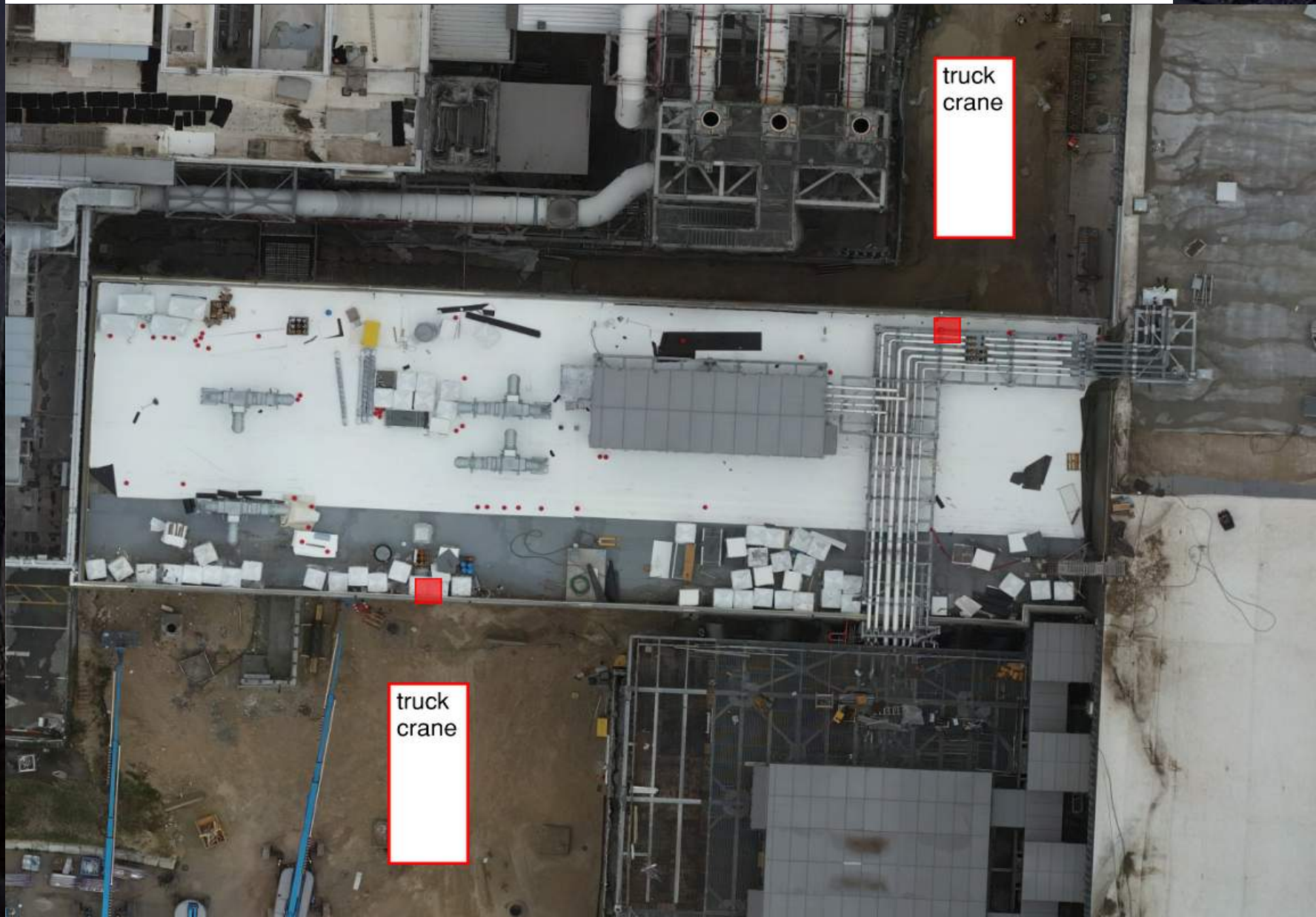
Crane: 500 ton crane
location: AQ on west
road

Crane: 650 ton crane
location: BE-BK on west
road. waiting for crane
pad build.





Removal of temp columns



Map Labels:

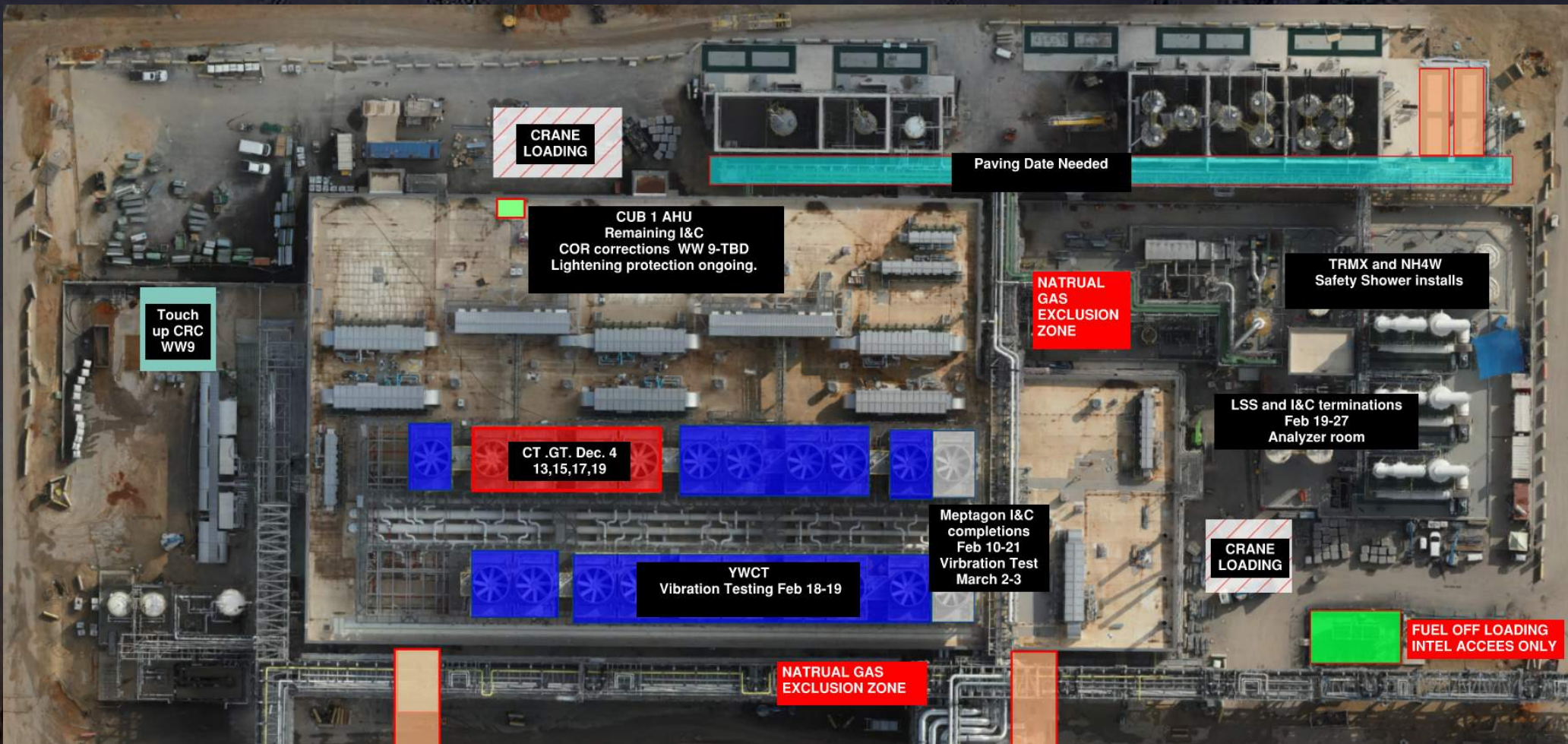
- North Yard:** Paving North Yard WW 7, Water Treatment.
- East Yard:** EAST YARD, I&C UPN 252 WWW 9.
- Central:** ELECTRICAL, OPS READY / PUNCHLIST RESTRICTED ACCESS SEE RED AREAS, WWT, FMS CONTROL ROOM I&C LAB, MECH. CONTROL ROOM, MECH. WORKSHOP, LIWS LAB, ANALYZER ROOM, NH4W 283.
- South:** CHILLERS, SAND FILTERS, BOILERS, OIL FUEL TANK, Scaffolding Removal or Modify March 6.
- West:** CUB 1 Evacuation Muster area North Yard, LVSS Shut down for Com cable pull Feb 20 0900-1200 Brand Roxtec Firestopping ongoing.
- Other:** BCS/BSA-JEA IA status for Tie in 253 complete 252 Feb 19-20, Pump 261-1,2,3,5,7 Start up WW 9 Bump Test 261-1,2-95 Feb 24, TMWX to Roof Trestle Pressure Tests Jan 26 RE Test ongoing, Insulation, Labeling Feb 5 QC walk DV Feb 10, NH4W to Roof Trestle Pressure Tests Inner pipe Jan 23 RE Test ongoing, Natural Gas to Boiler Feb.20, CX Natural Gas to Boiler Feb.24-27, Purge Lines and Charge Natural Gas To Site Feb.19, FUEL OFF LOADING INTEL ACCESS ONLY, Revised Access.

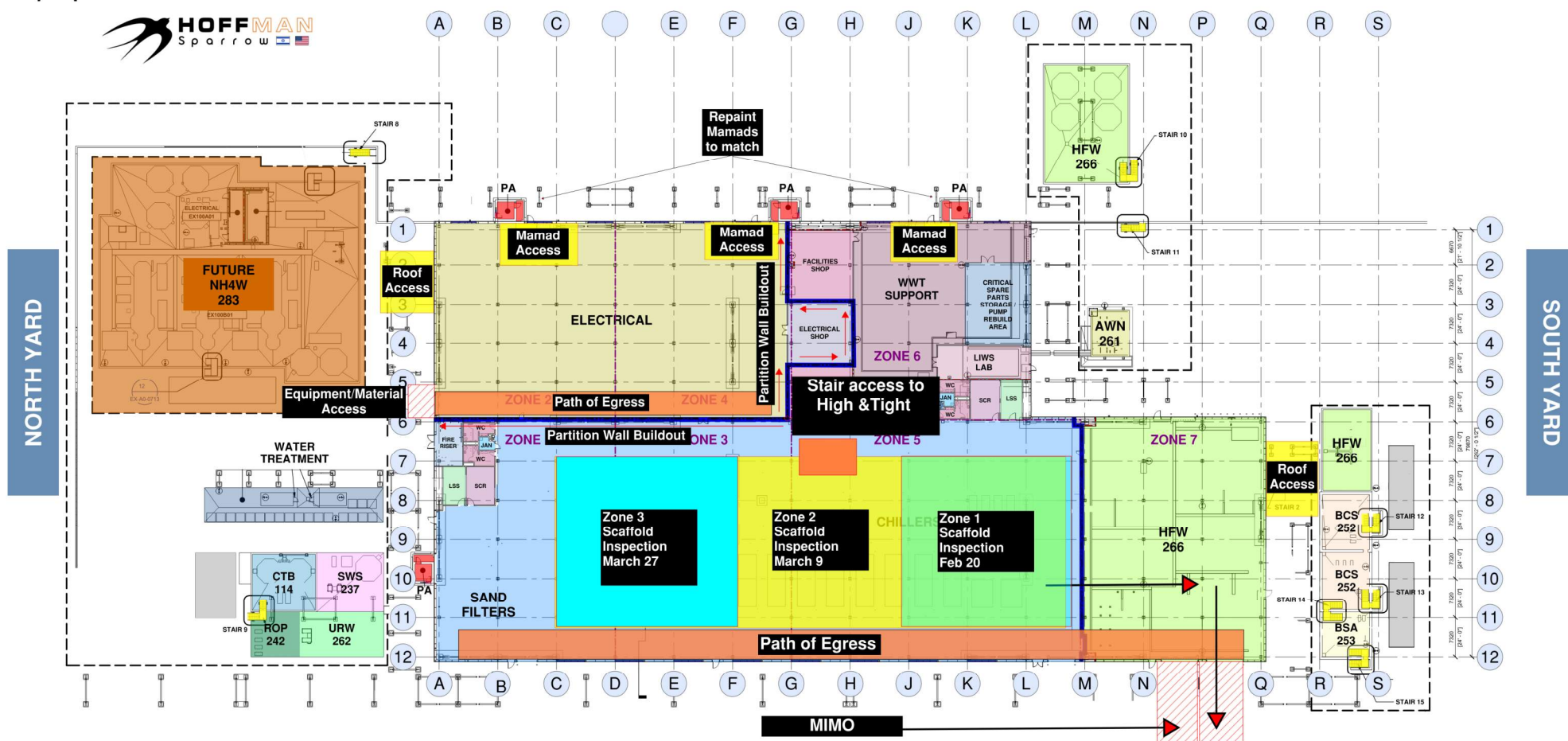
From	Circuit Number	To	Owner
3C11_E03-DNS023	5	LC23-FLT114-1-60	@Cooney, ZacaryX
3C11_E03-DNS023	6	LC23-FLT114-4-60	@Cooney, ZacaryX
3C11_E03-DNS023	18	LC23-VFD114-10-00	@Cooney, ZacaryX

Map Callouts:

- Truck Offload:** TRUCK OFFLOAD 1, TRUCK OFFLOAD 2, TRUCK OFFLOAD 3, TRUCK OFFLOAD 5, TRUCK OFFLOAD 6, TRUCK OFFLOAD 7.
- Stairs:** STAIR 1 (TO ROOF), STAIR 2 (TO ROOF), STAIR 3, STAIR 6, STAIR 7, STAIR 8, STAIR 9, STAIR 10, STAIR 11, STAIR 12, STAIR 13, STAIR 14, STAIR 15, STAIR 16, STAIR 17, STAIR 20.
- Ramps:** RAMP 1, RAMP 2, RAMP 3.
- Rooms:** BCS 252, BSA 253, GSW 269, OSS 718, CSW 270, FMS A, FMS B, SCR, LSS, JAN, WC, FIRE RISER, PA, AWW 261, NH4W 283.
- Zones:** ZONE 1, ZONE 2, ZONE 3, ZONE 4, ZONE 5, ZONE 6, ZONE 7, ZONE 8, ZONE 9.
- Exclusion Zones:** NATURAL GAS EXCLUSION ZONE.
- Other:** CTB 114, SWS 237, ROP 242, URW 262.

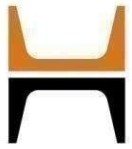
CUB 1 – EXTERIOR/ROOF



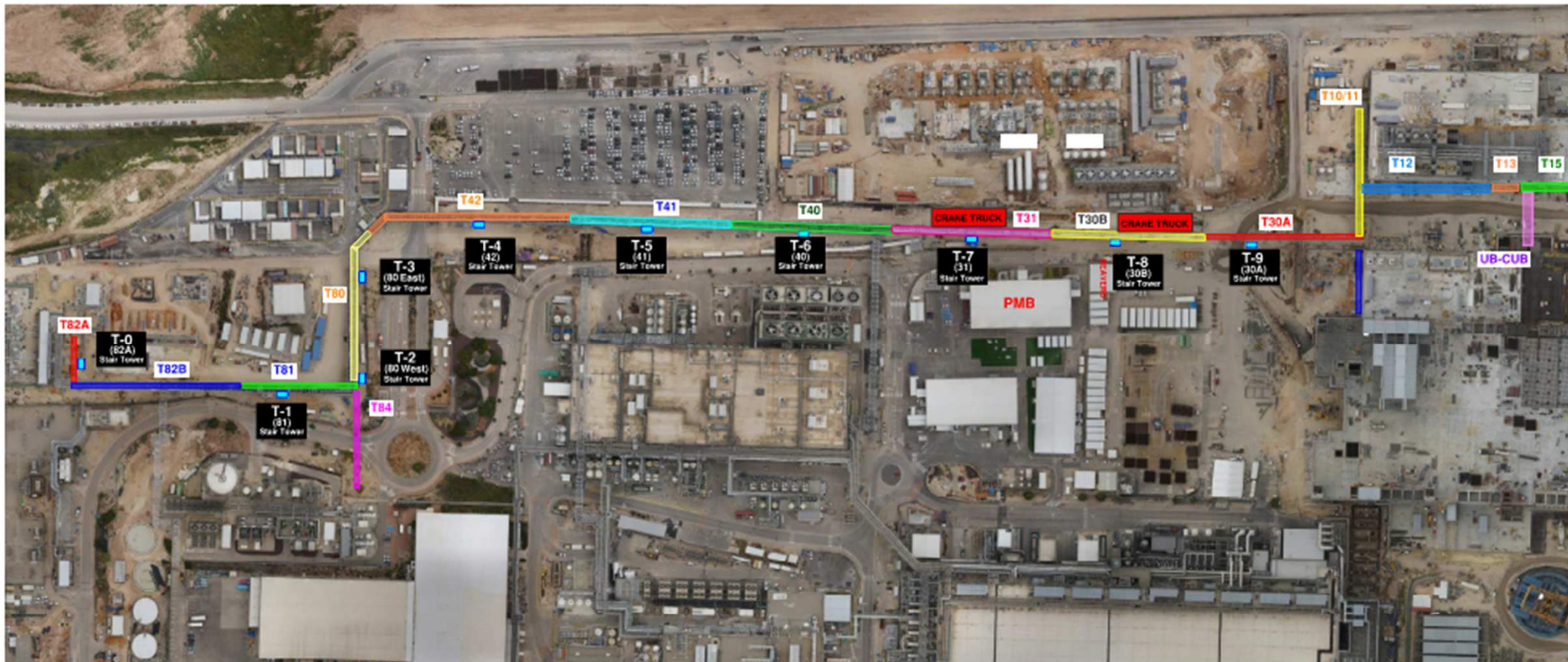


CUB 2 – EXTERIOR/ROOF





HOFFMAN CONSTRUCTION COMPANY

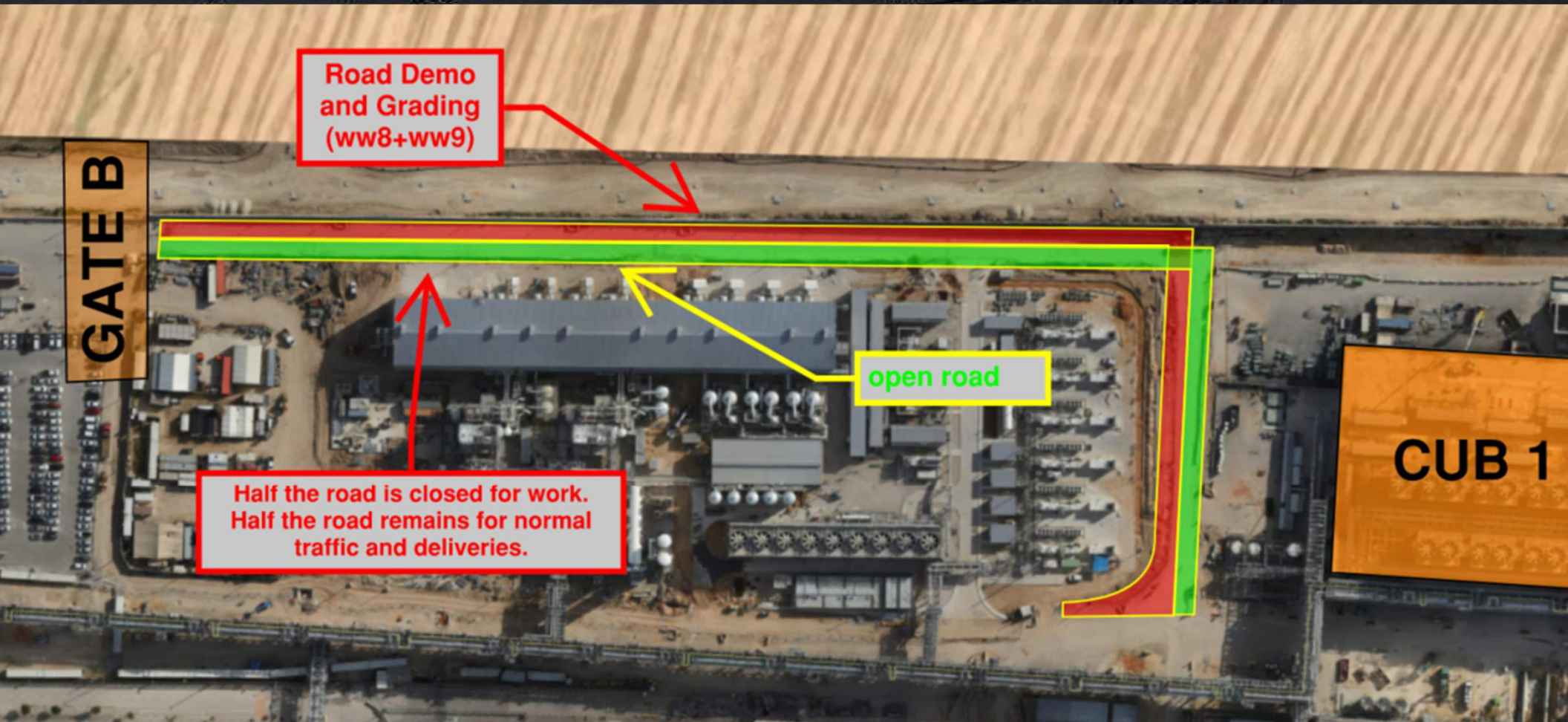




Daily Coordination Meeting

Site Logistics

North





HOFFMAN CONSTRUCTION COMPANY



Daily Coordination Meeting

Site Logistics

North





Daily Coordination Meeting

Site Logistics

South





Dropped object protection

1. All tools and materials will be tethered when working at heights.
2. These areas will be barricaded before the elevated work starts.
3. These hazards are addressed in you RAMS and PTP.
4. Remove tools and materials from grating areas that will fit through the grating or cover the grating.
5. Everyone knows this so now we just need to enforce.

Daily Coordination Meeting



14:00 Sign In