

Daily Coordination Meeting



14:00 Sign In

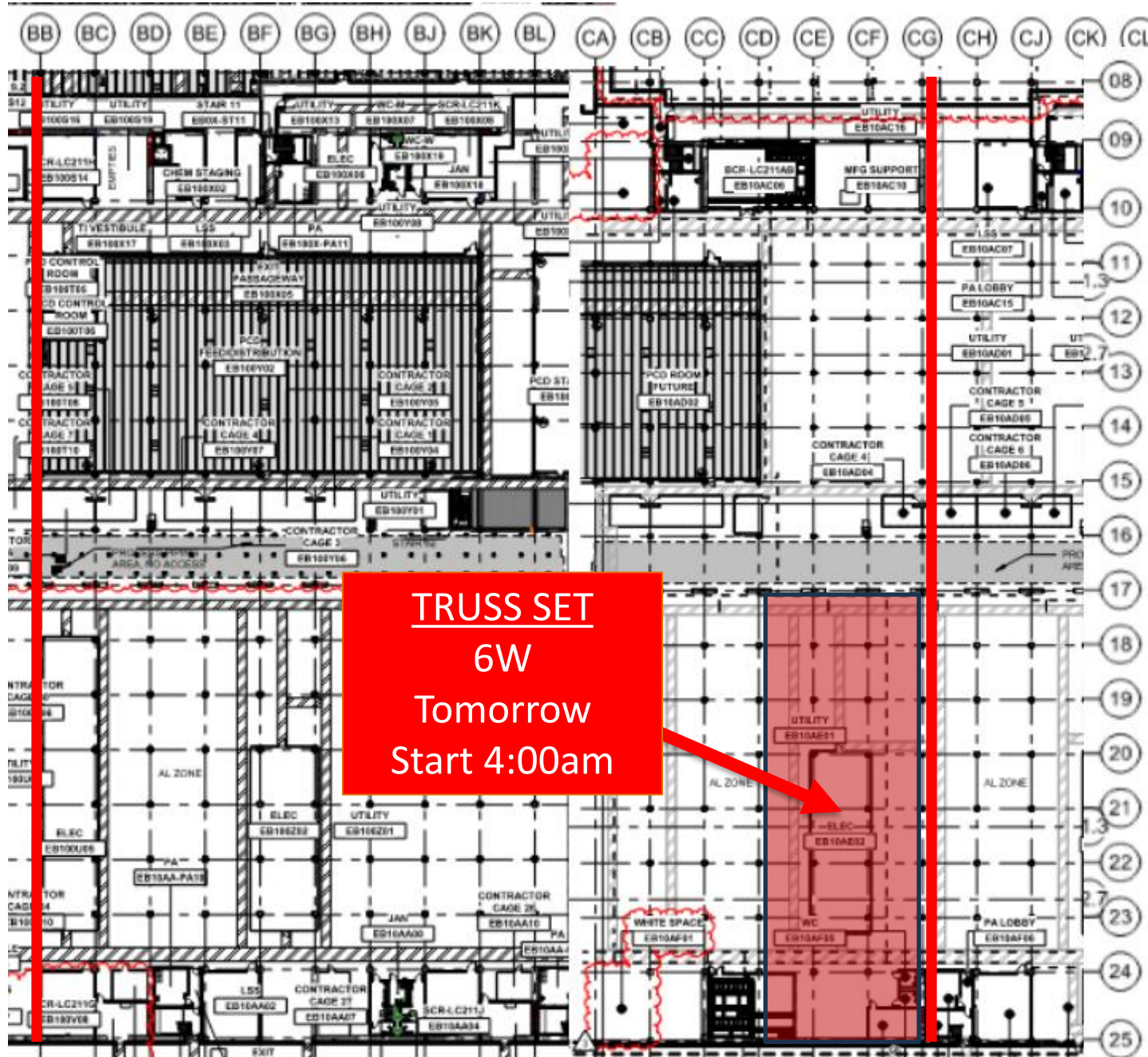
Daily Coordination Meeting

General Topics:

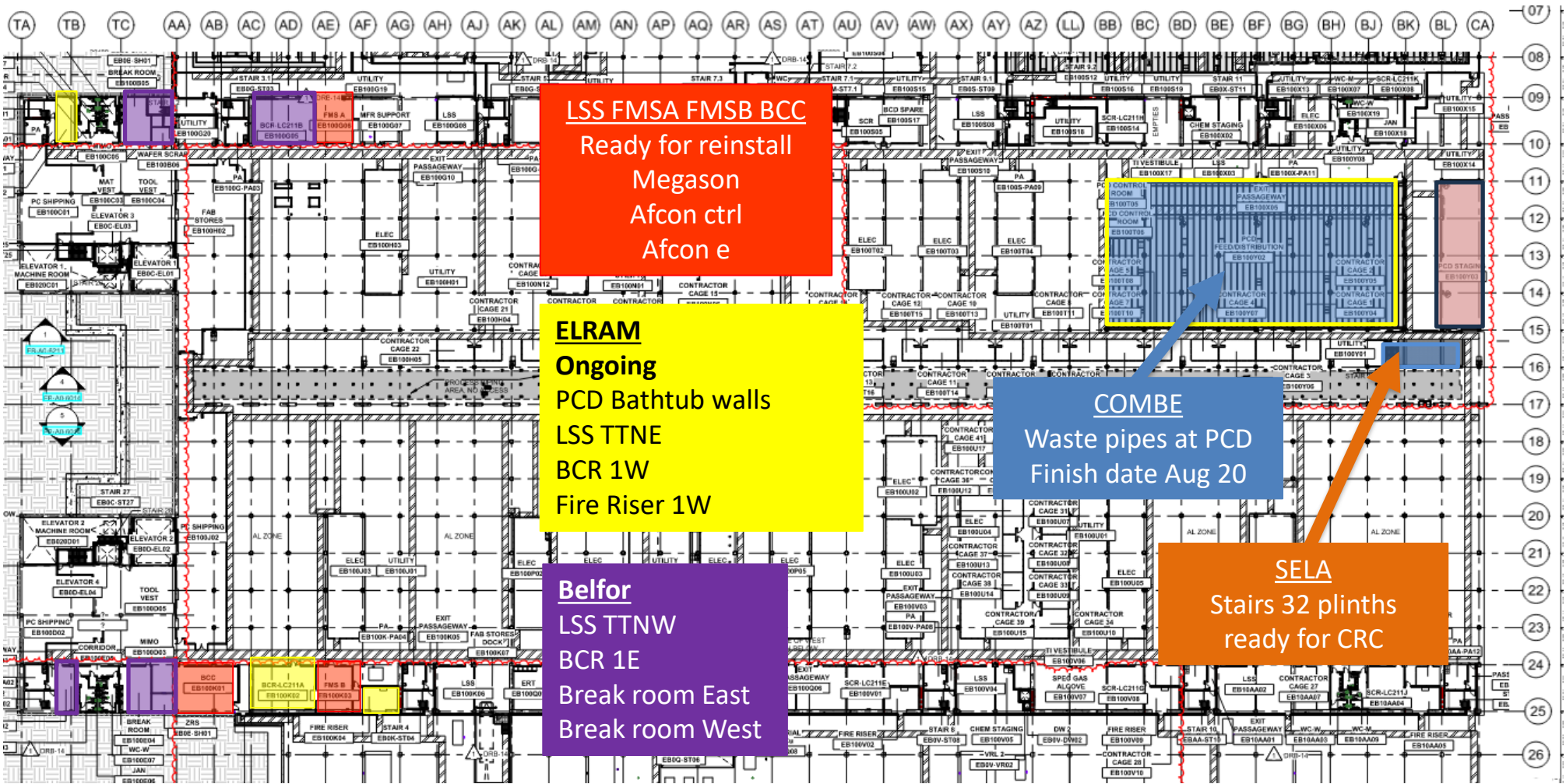
- Line of fire



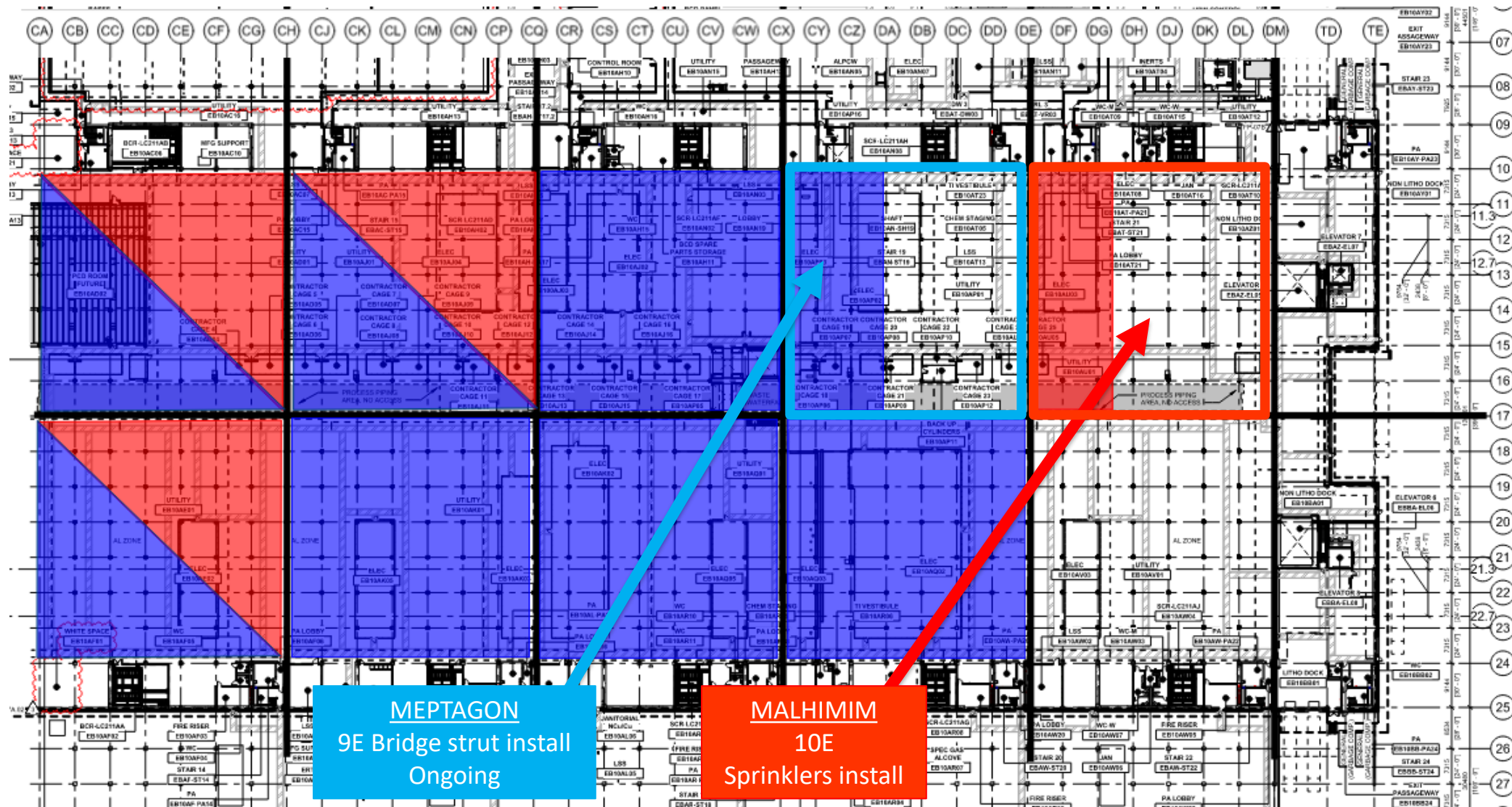
UTILITY LEVEL MOD2



UTILITY LEVEL MOD1

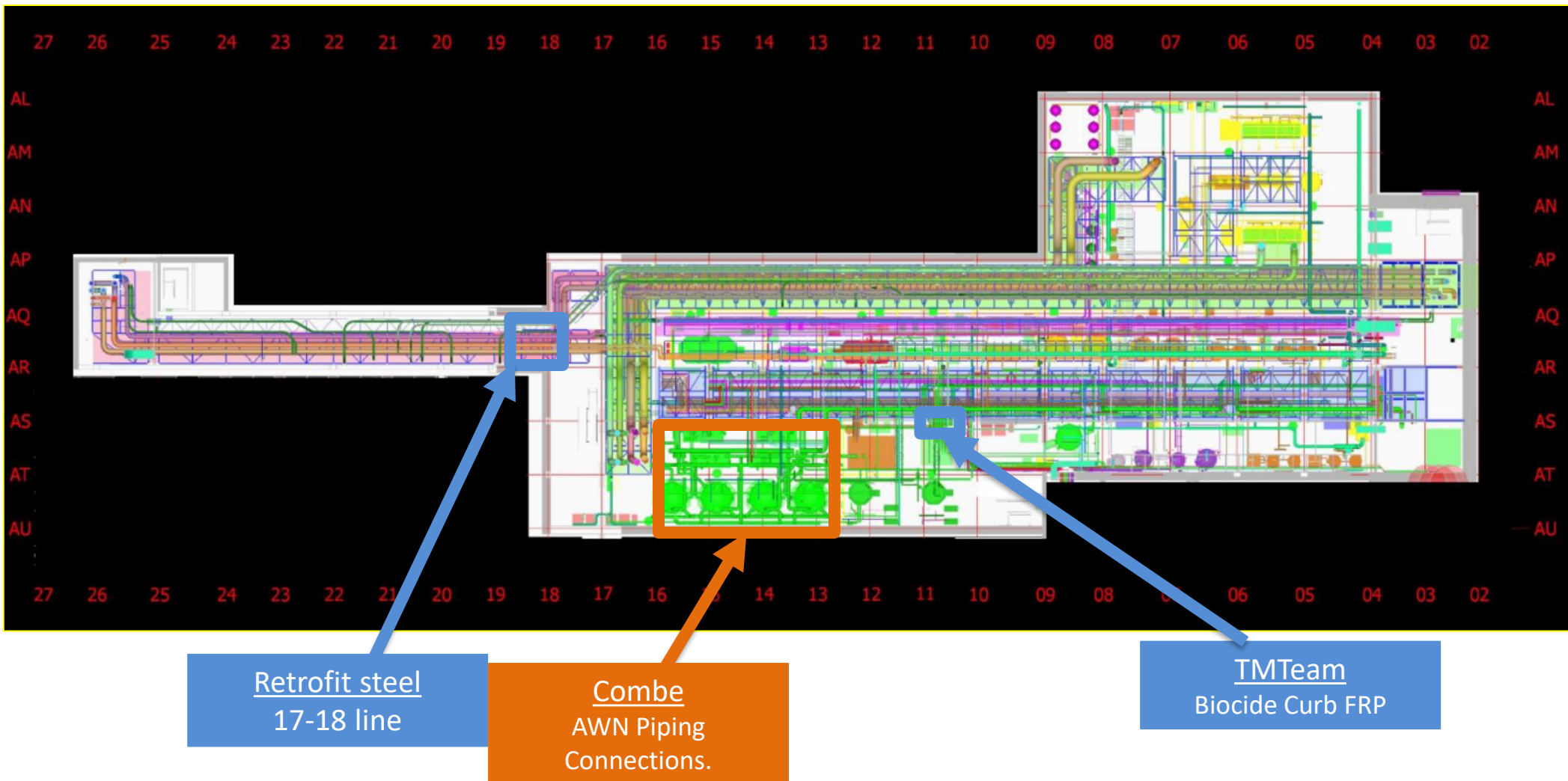


UTILITY LEVEL MOD2



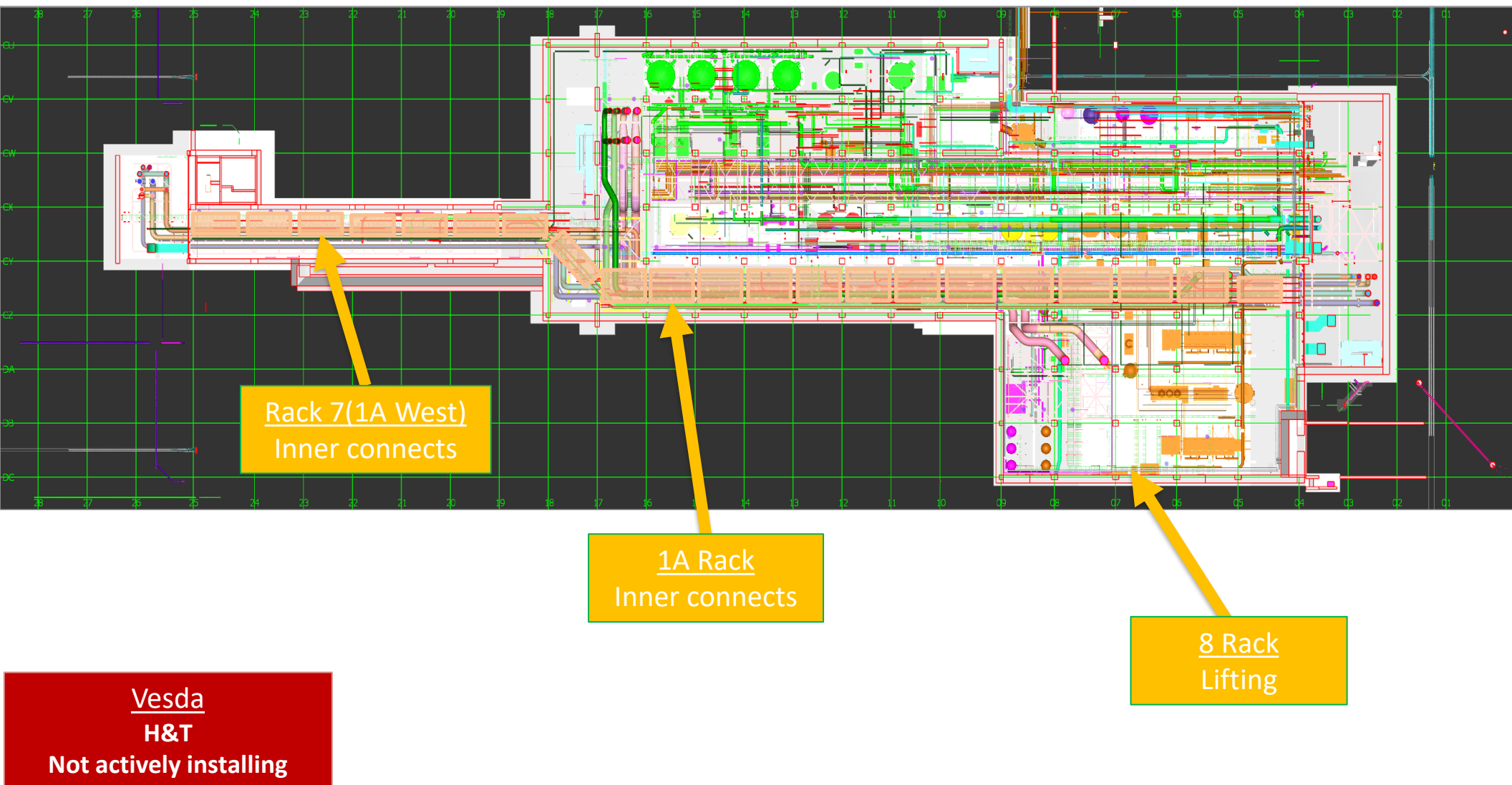


SUT 38.1 LEVEL

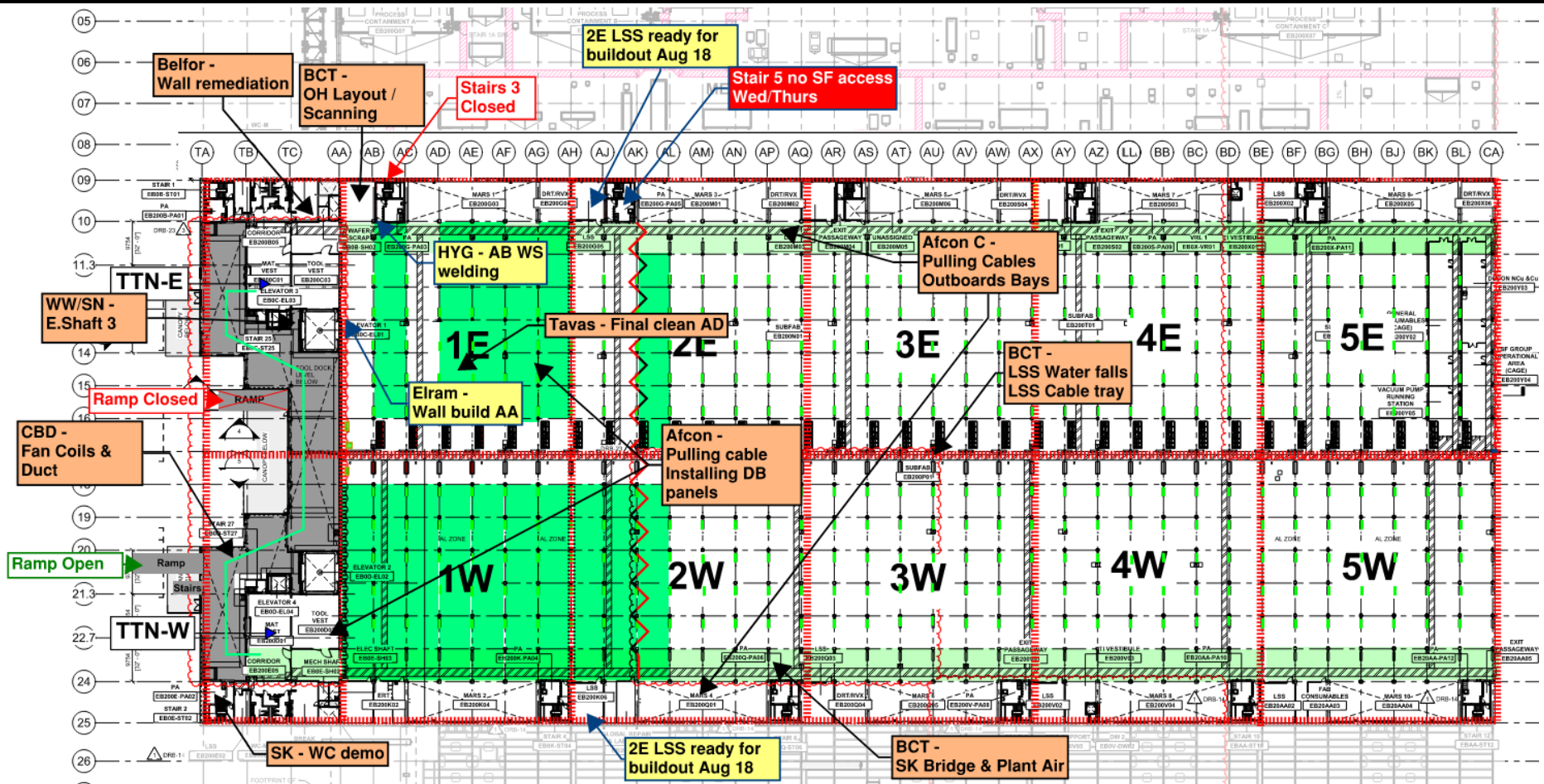




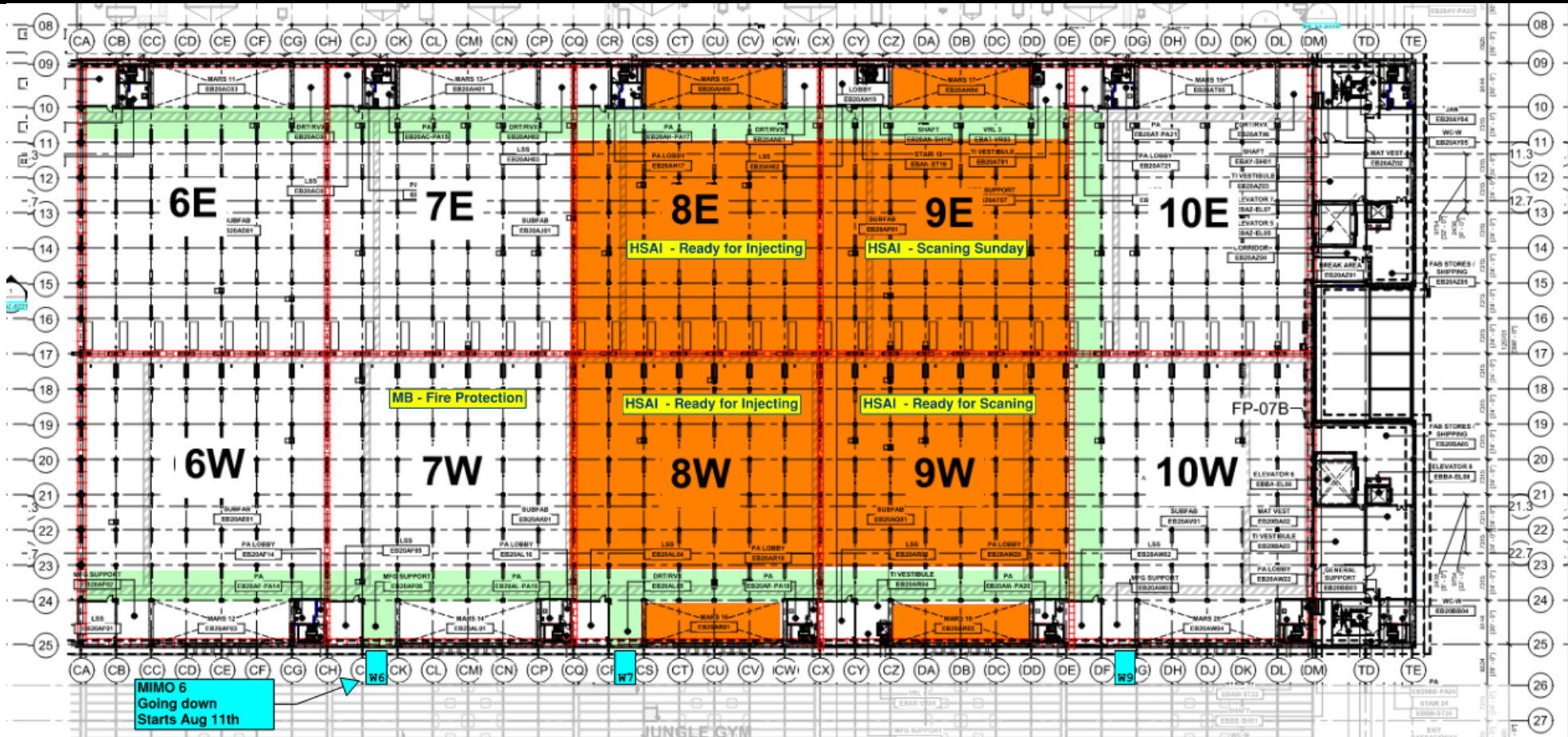
SUT 38.2 LEVEL



SUBFAB BUILDOUT MOD 1



SUBFAB BUILDOUT MOD 2



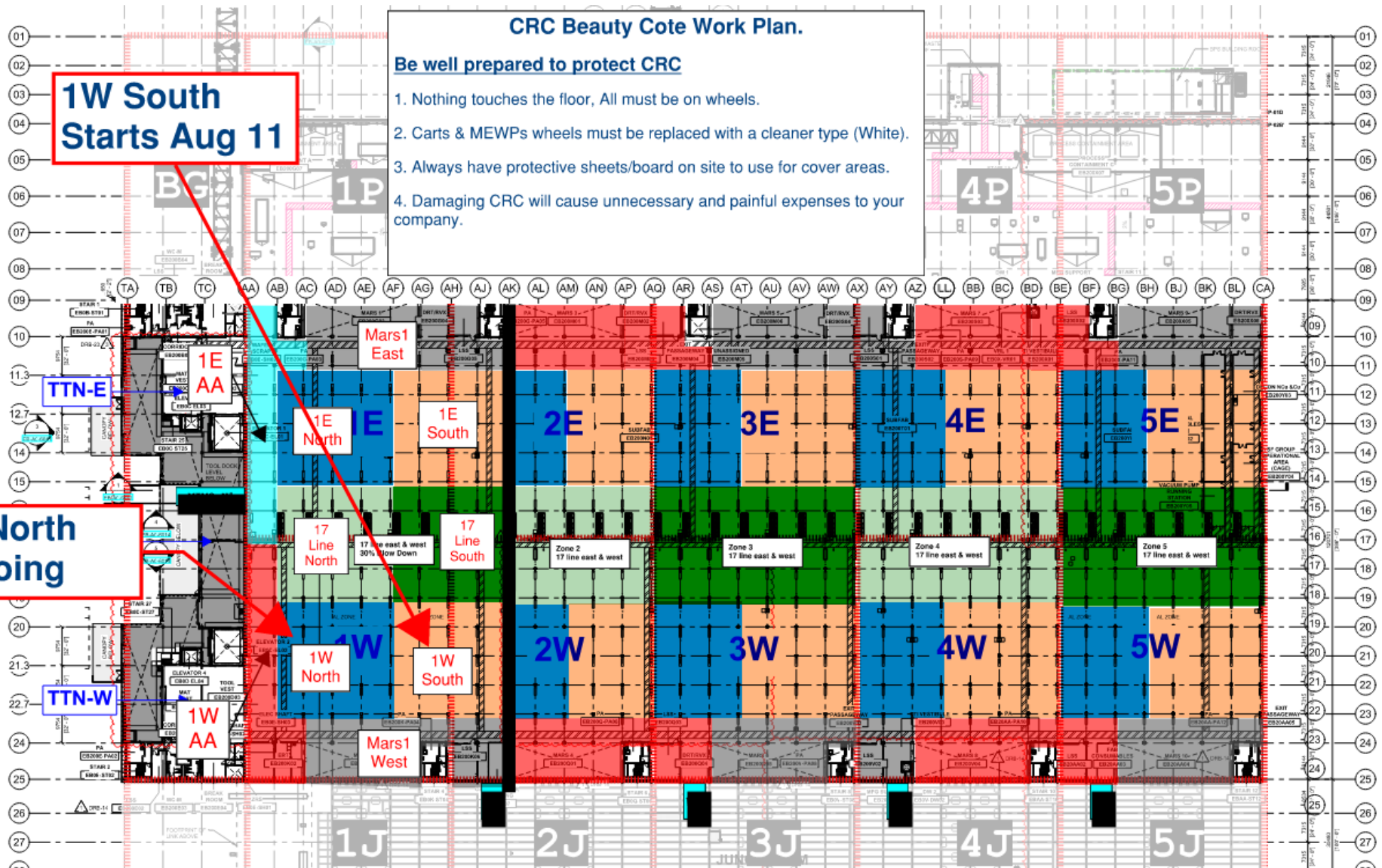
CRC Beauty Cote Work Plan.

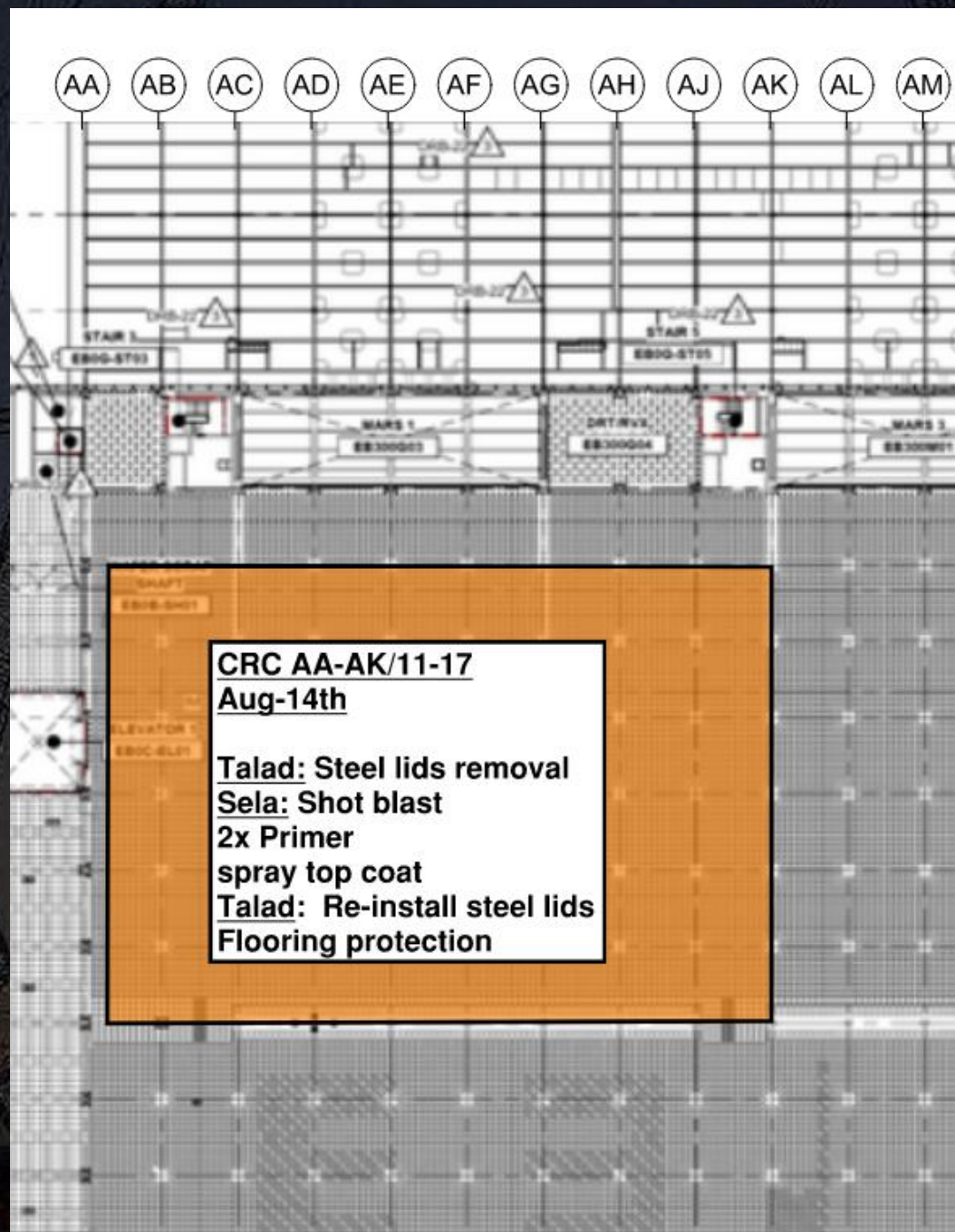
Be well prepared to protect CRC

1. Nothing touches the floor, All must be on wheels.
2. Carts & MEWPs wheels must be replaced with a cleaner type (White).
3. Always have protective sheets/board on site to use for cover areas.
4. Damaging CRC will cause unnecessary and painful expenses to your company.

**1W South
Starts Aug 11**

**1W North
Ongoing**



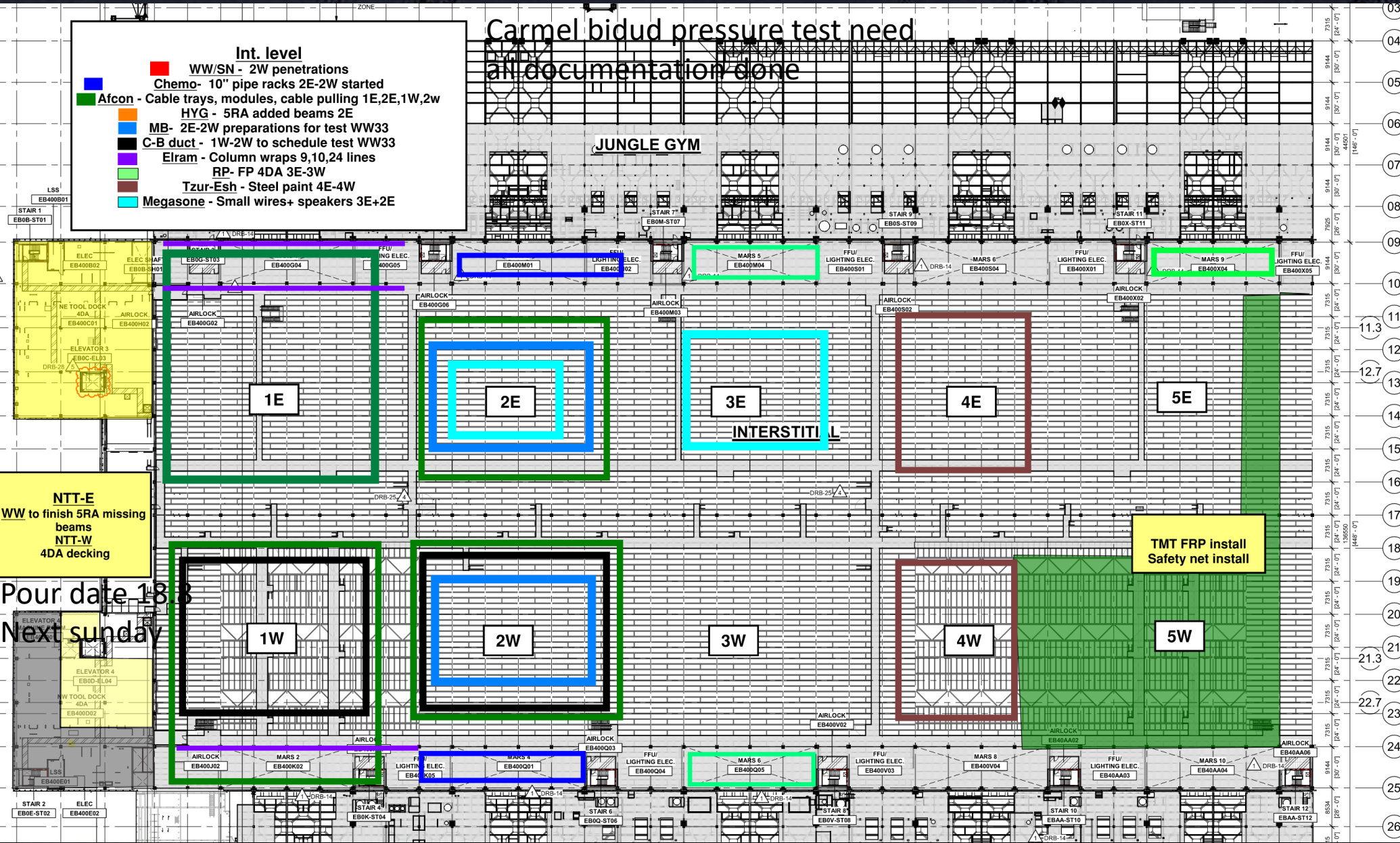


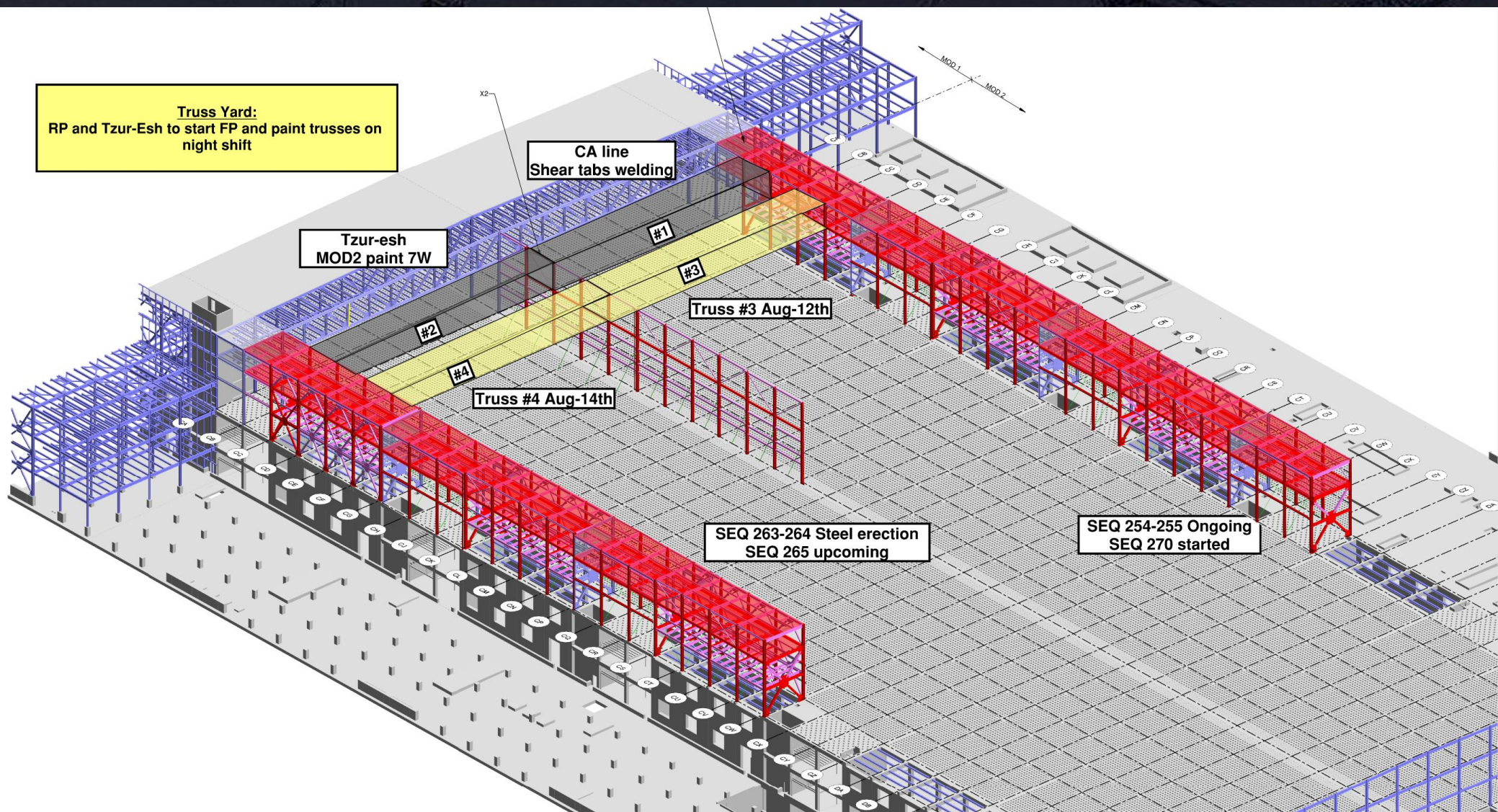
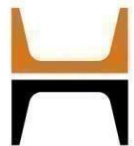


Carmel bidud pressure test need
all documentation done

Int. level

- WW/SN - 2W penetrations
- Chemo- 10" pipe racks 2E-2W started
- Afcon - Cable trays, modules, cable pulling 1E,2E,1W,2w
- HYG - 5RA added beams 2E
- MB- 2E-2W preparations for test WW33
- C-B duct - 1W-2W to schedule test WW33
- Elram - Column wraps 9,10,24 lines
- RP- FP 4DA 3E-3W
- Tzur-Esh - Steel paint 4E-4W
- Megasone - Small wires+ speakers 3E+2E





Truss Yard:
RP and Tzur-Esh to start FP and paint trusses on night shift

CA line
Shear tabs welding

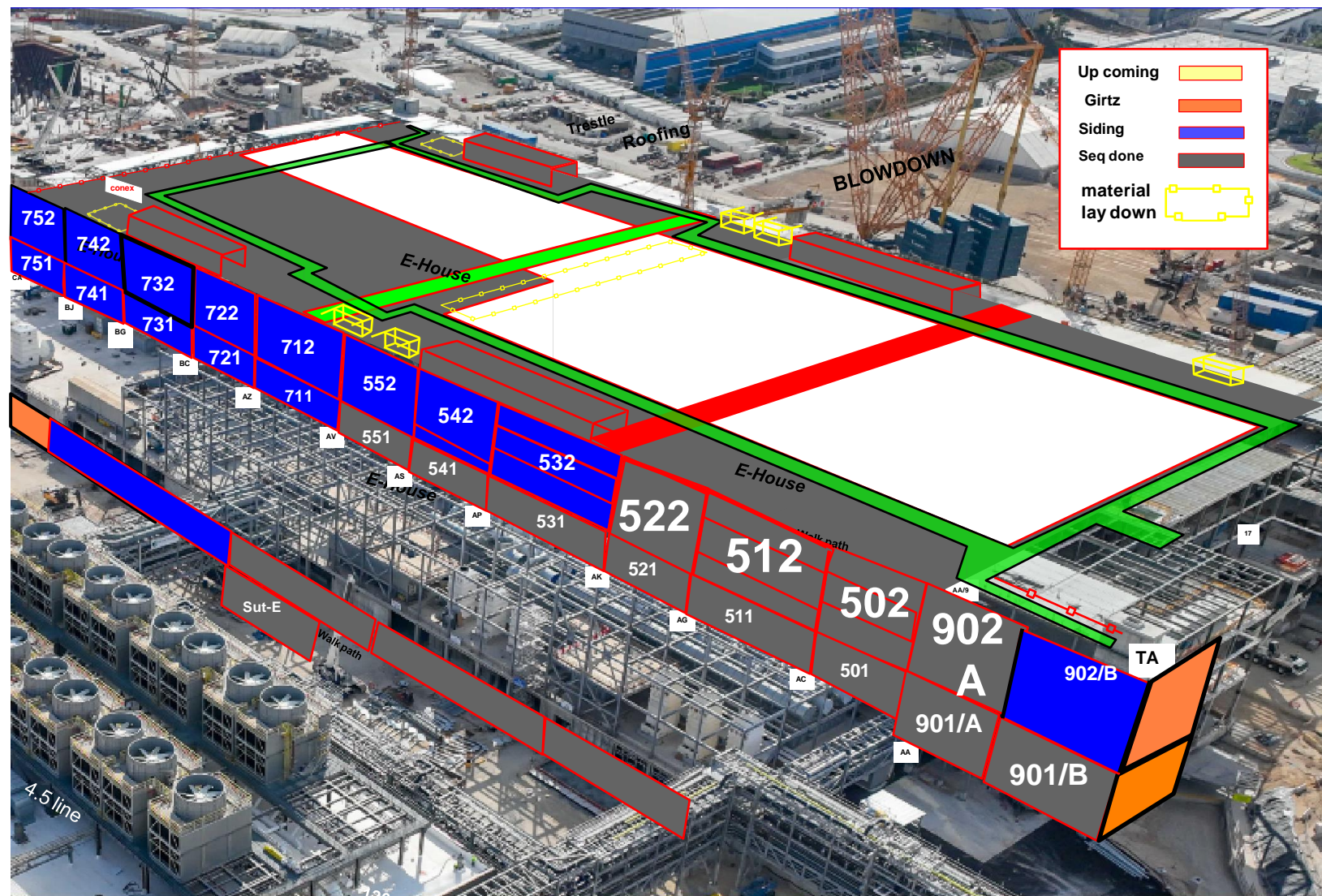
Tzur-esh
MOD2 paint 7W

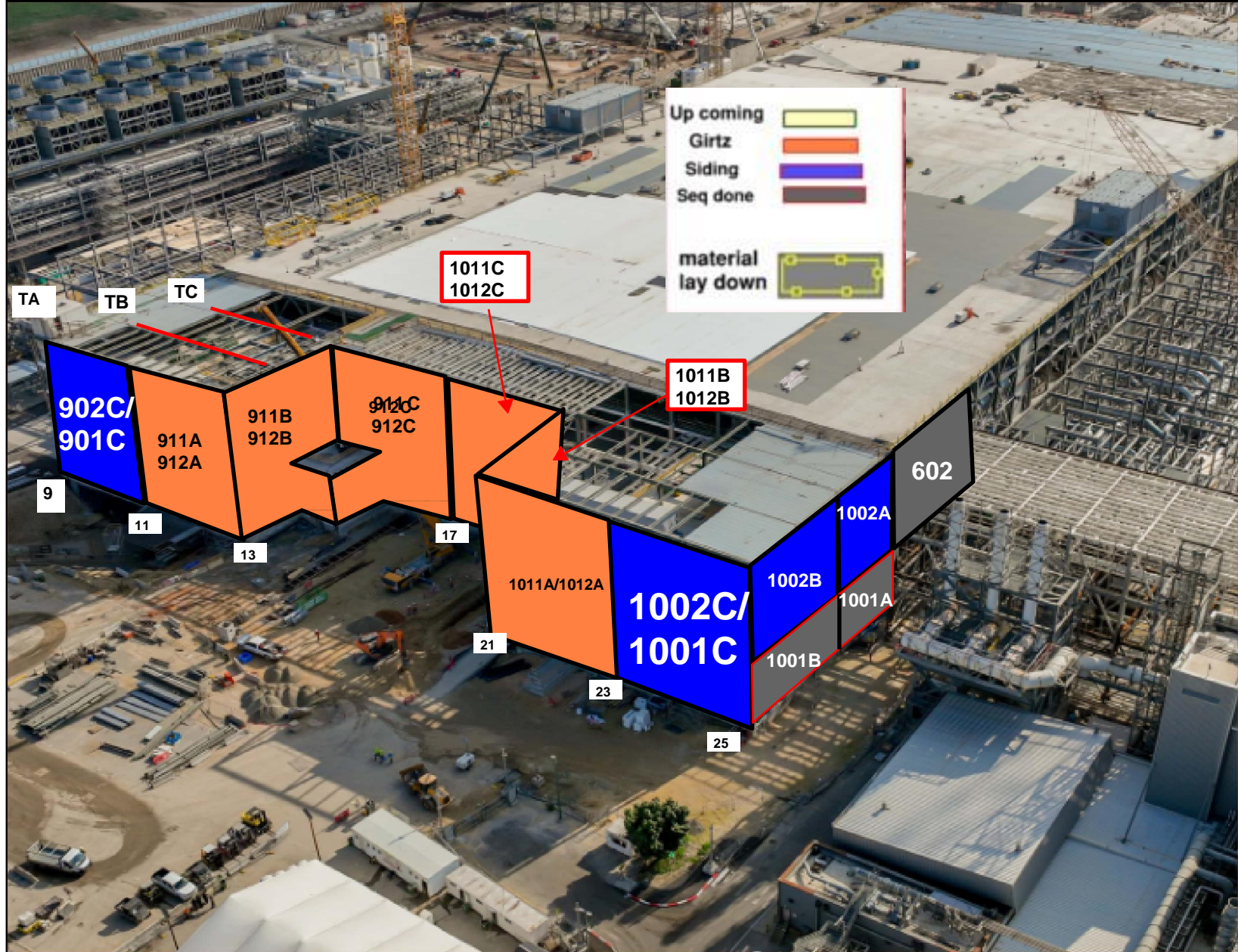
Truss #3 Aug-12th

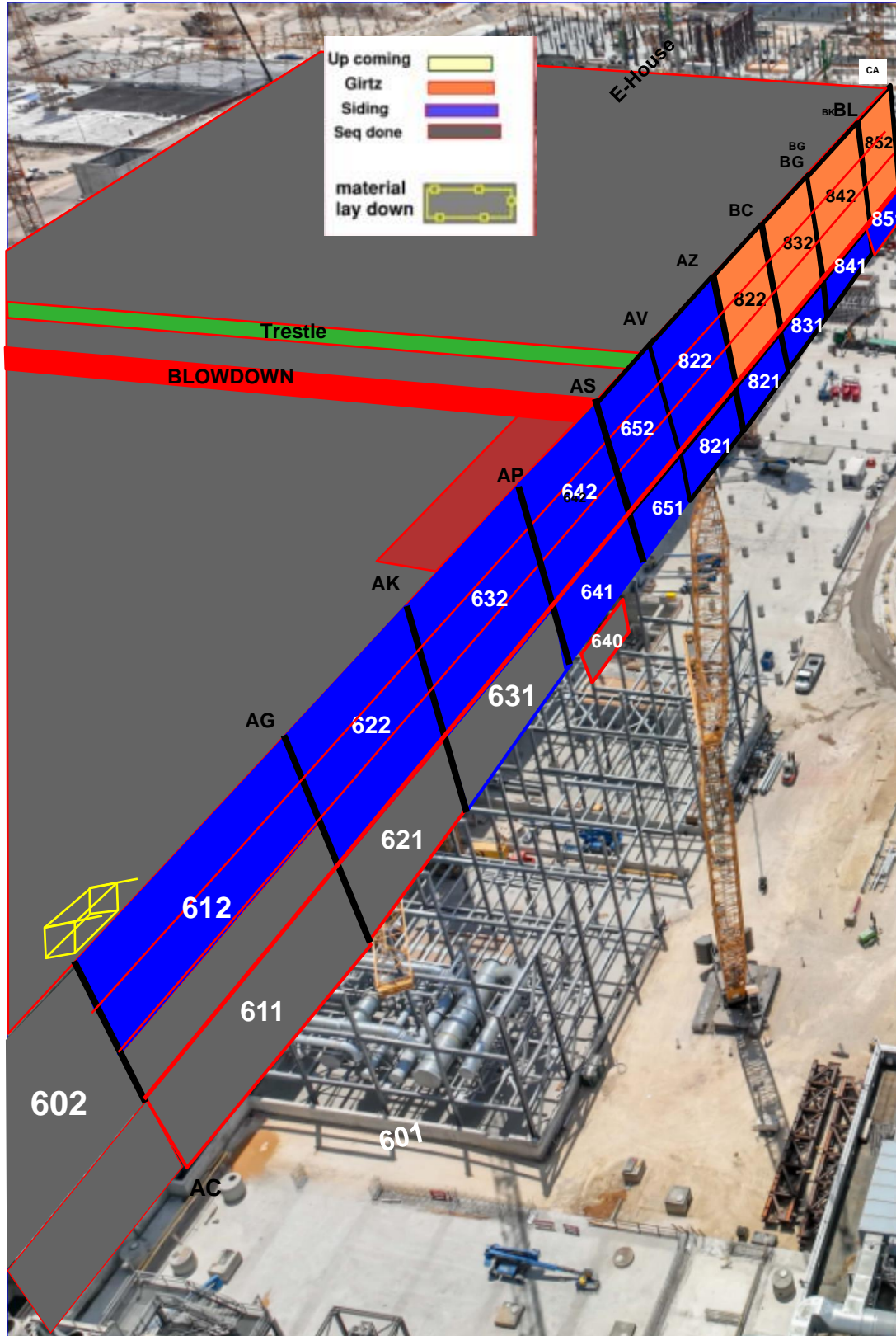
Truss #4 Aug-14th

SEQ 263-264 Steel erection
SEQ 265 upcoming

SEQ 254-255 Ongoing
SEQ 270 started



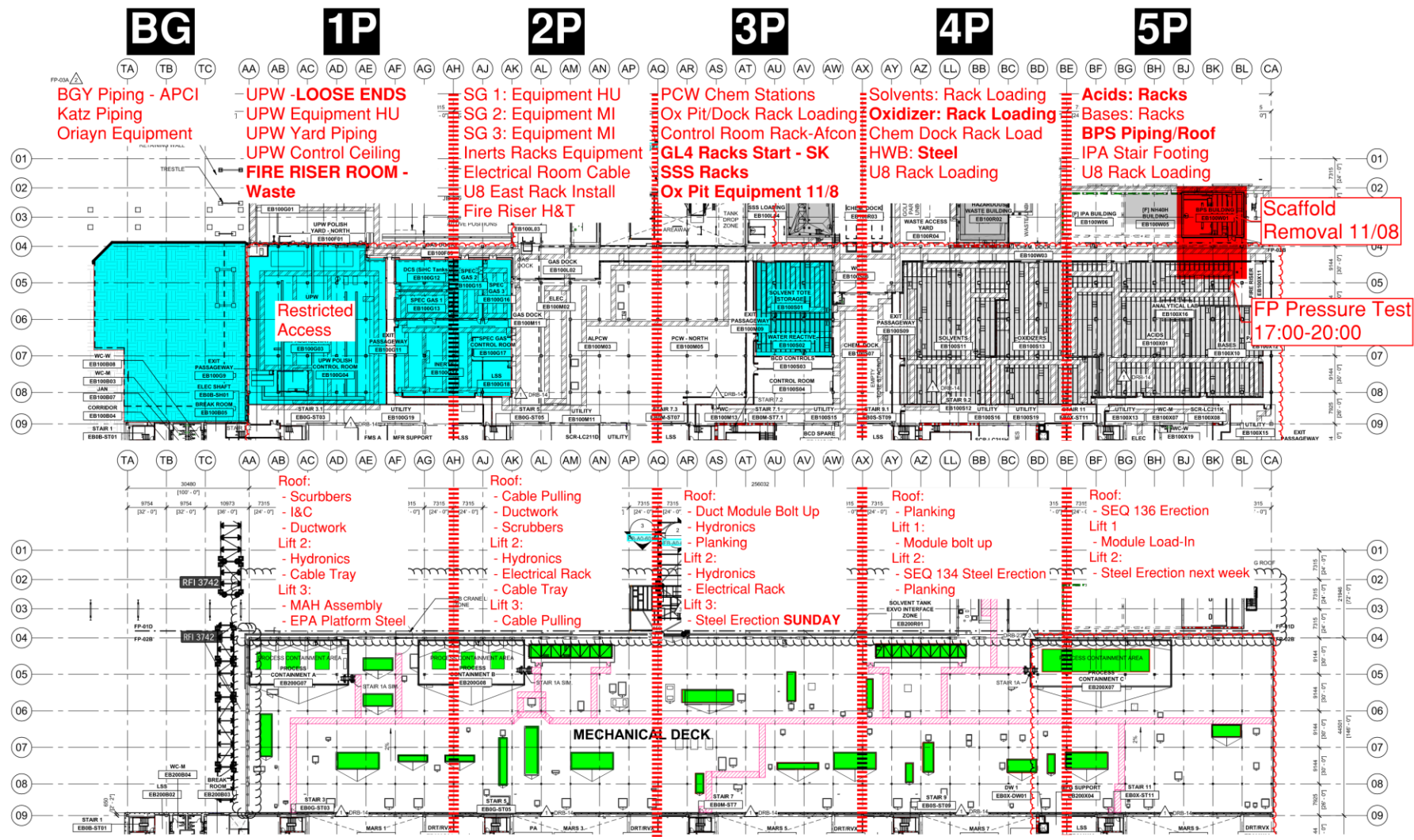




PSSS.1

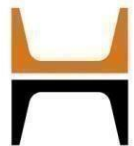
Utility Level
1YA

PSSS Roof
2SA





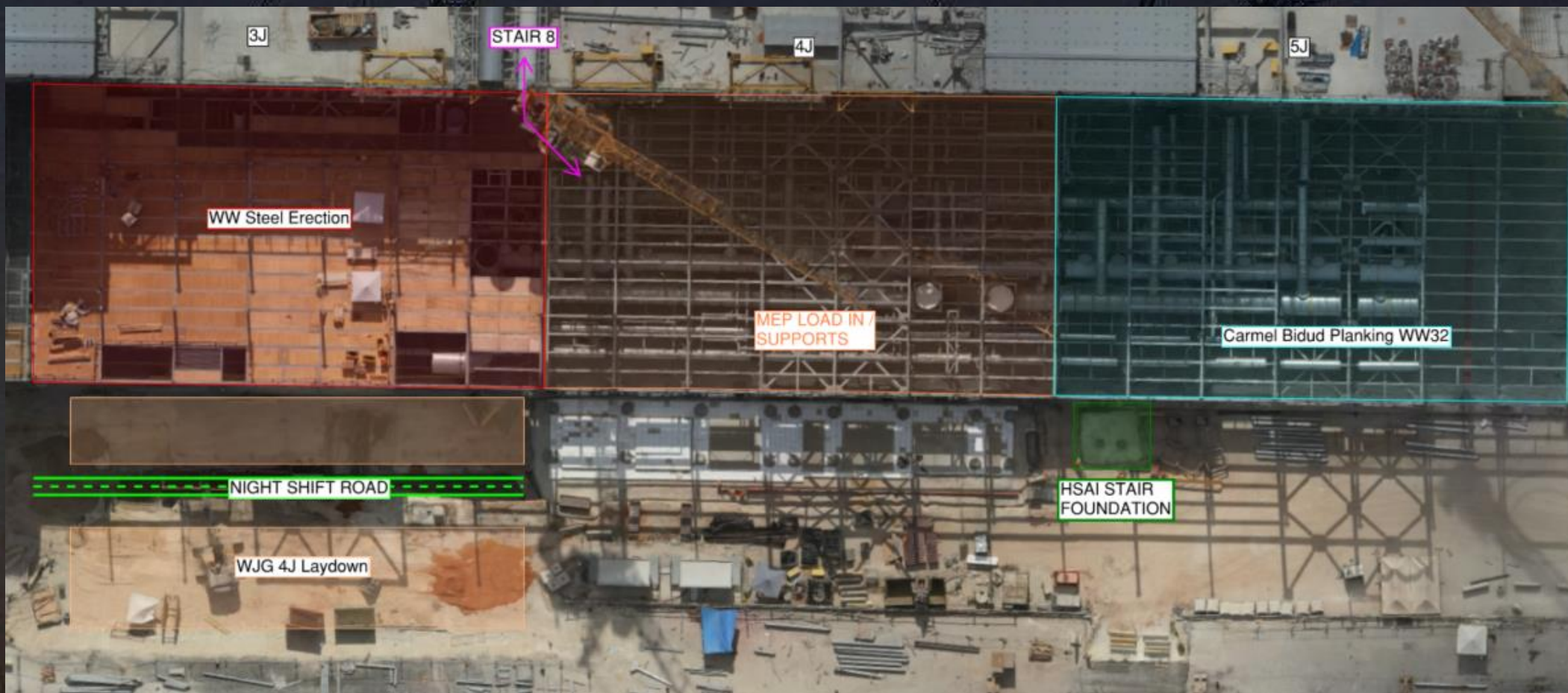
PSSS P1
PachTaas Operation
Plates: 15-08-2024
Air Blower: 20-08-2024
EPA Platform: 26-08-2024

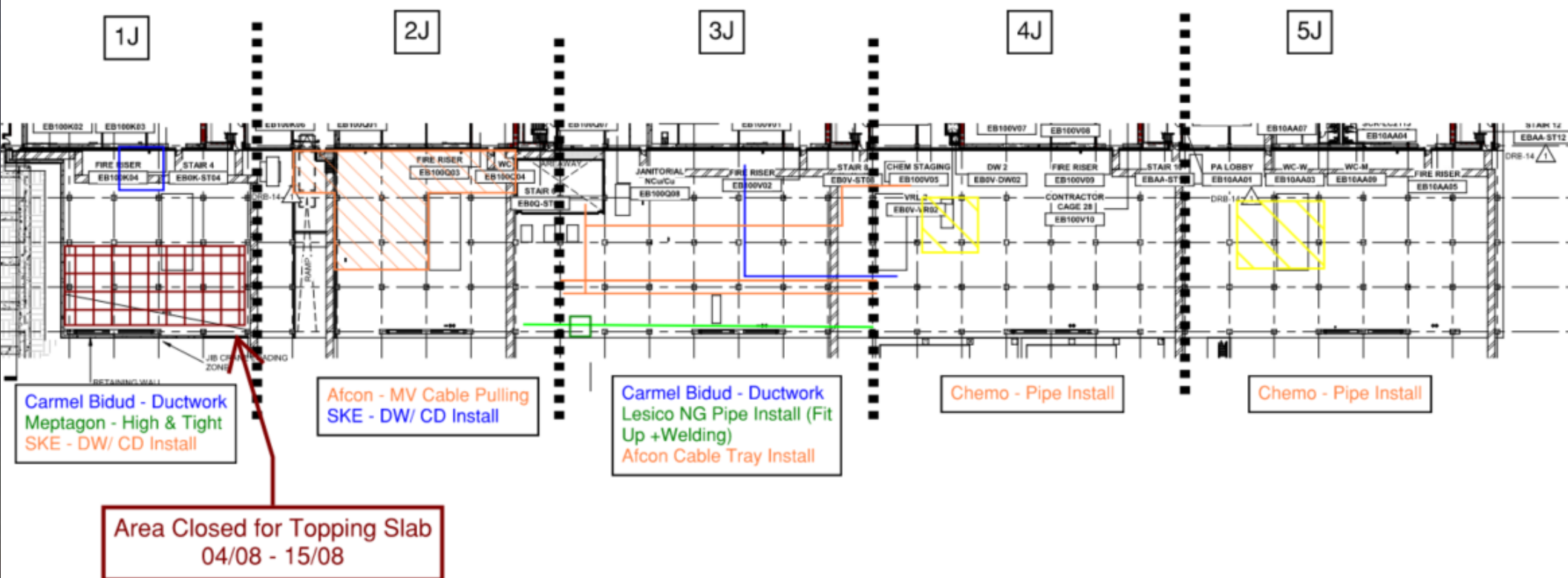


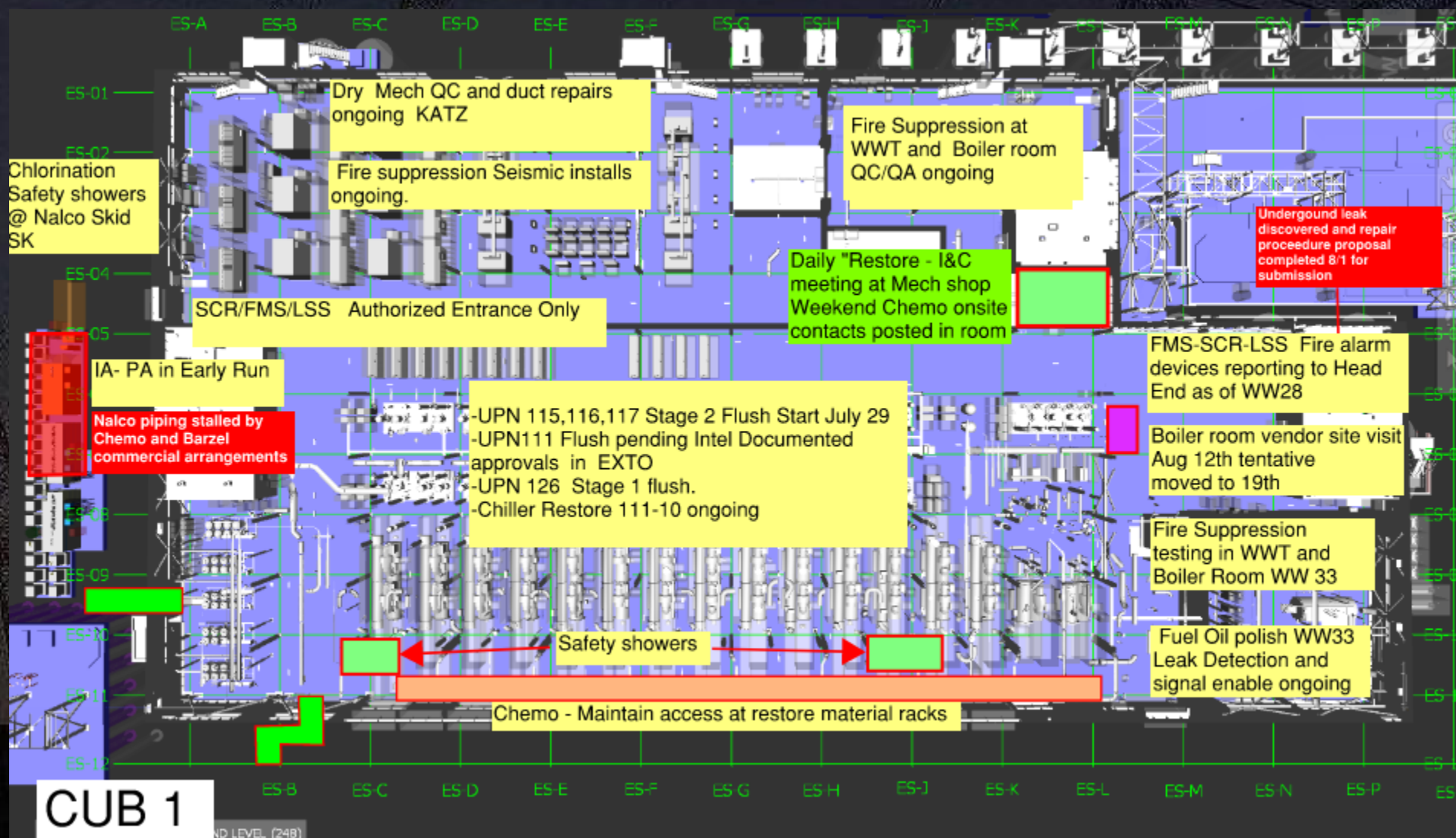
WJG 01J, 02J LIFT 2 & 3

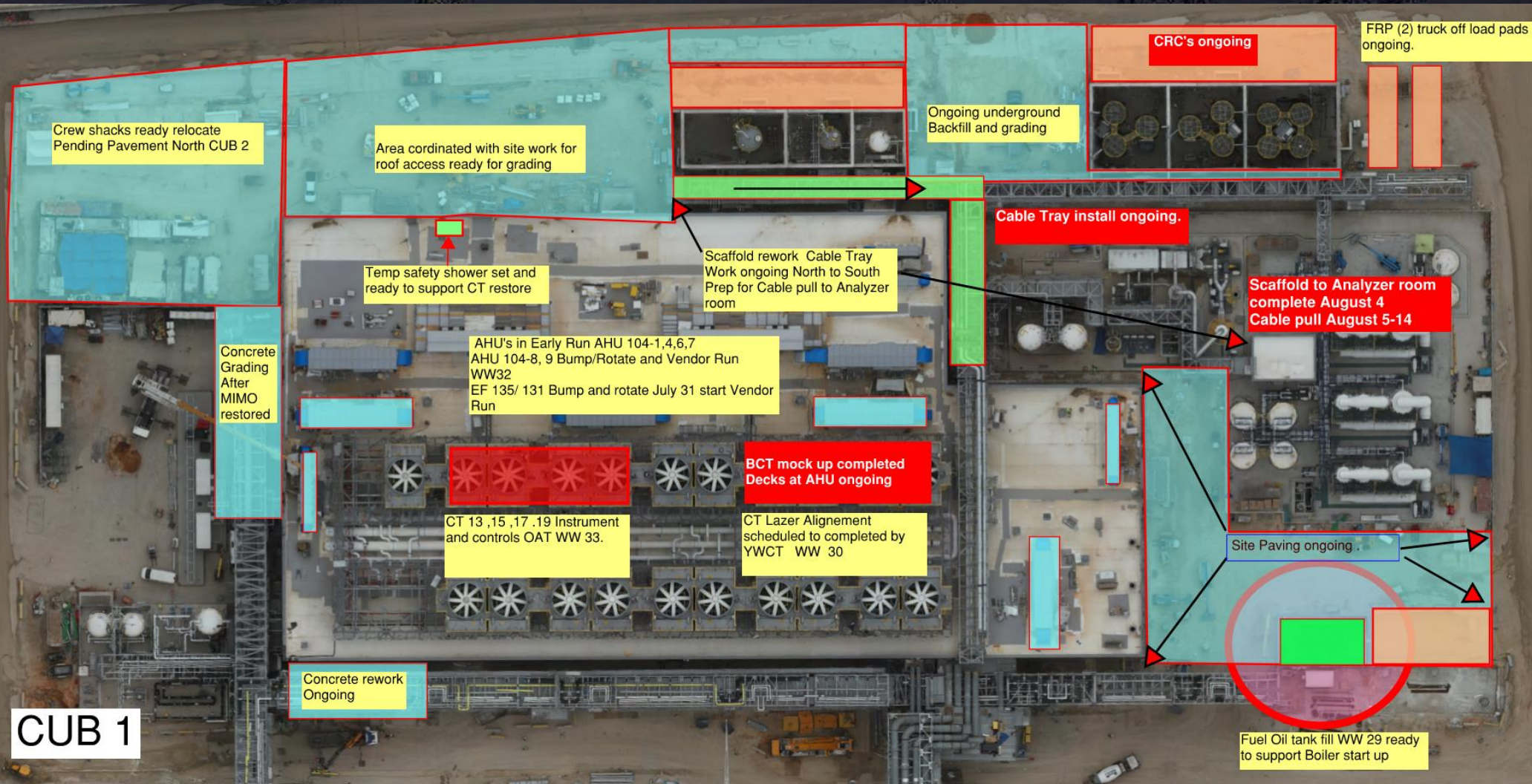


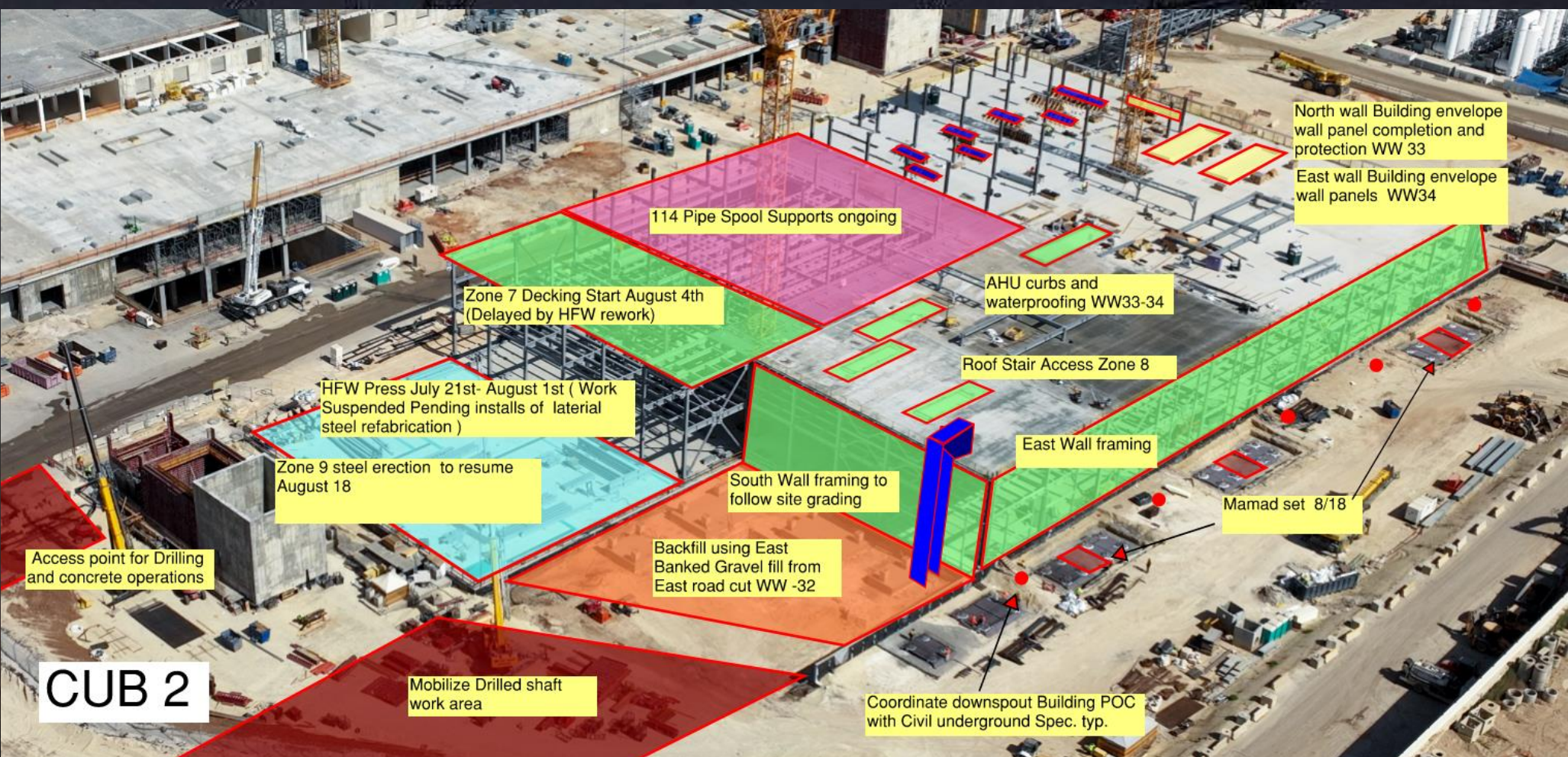
WJG 03J, 04J, 05J LIFT 2 & 3

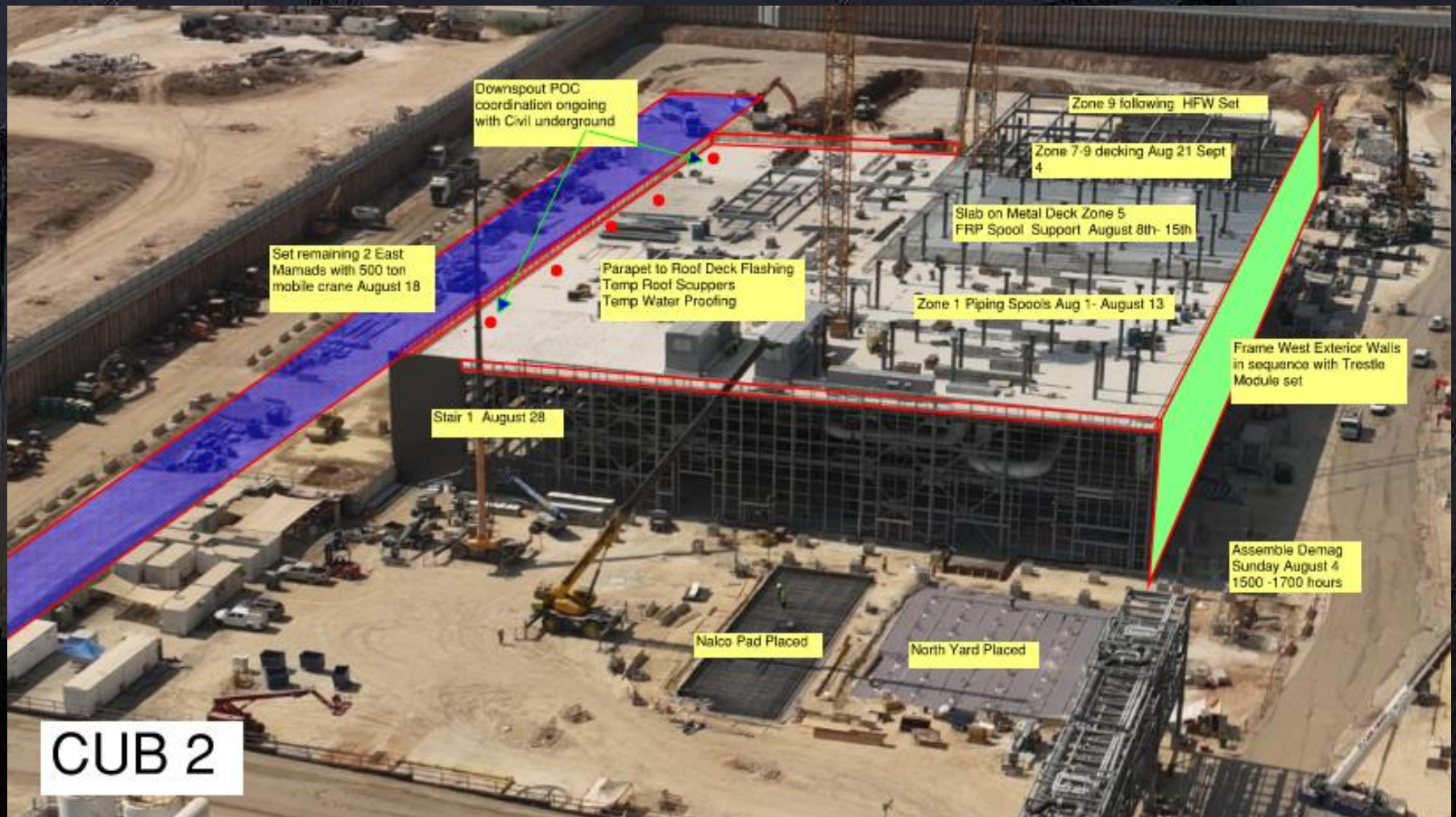














NO ENTRY
HV ENERGIZED AREA

Elmor-
SES- pulling control cables
AIS-term control cables
groung grid rejects

BYNET- SES & AIS
Laibling& prep for GT

Siemens / Pach Taas
SES & Lvss- E.F instal

TMT
Z 8 vac truck soil replacement
sealing -liftstation & sewage manholes

TMT- Rimon Intel
general cleaning
15th turnover to intels walk



HOFFMAN CONSTRUCTION COMPANY



Trestle - MOD 2 Steel erection

T-17 Lvl 1

August 14

August 11

August 13

August 18

August 15

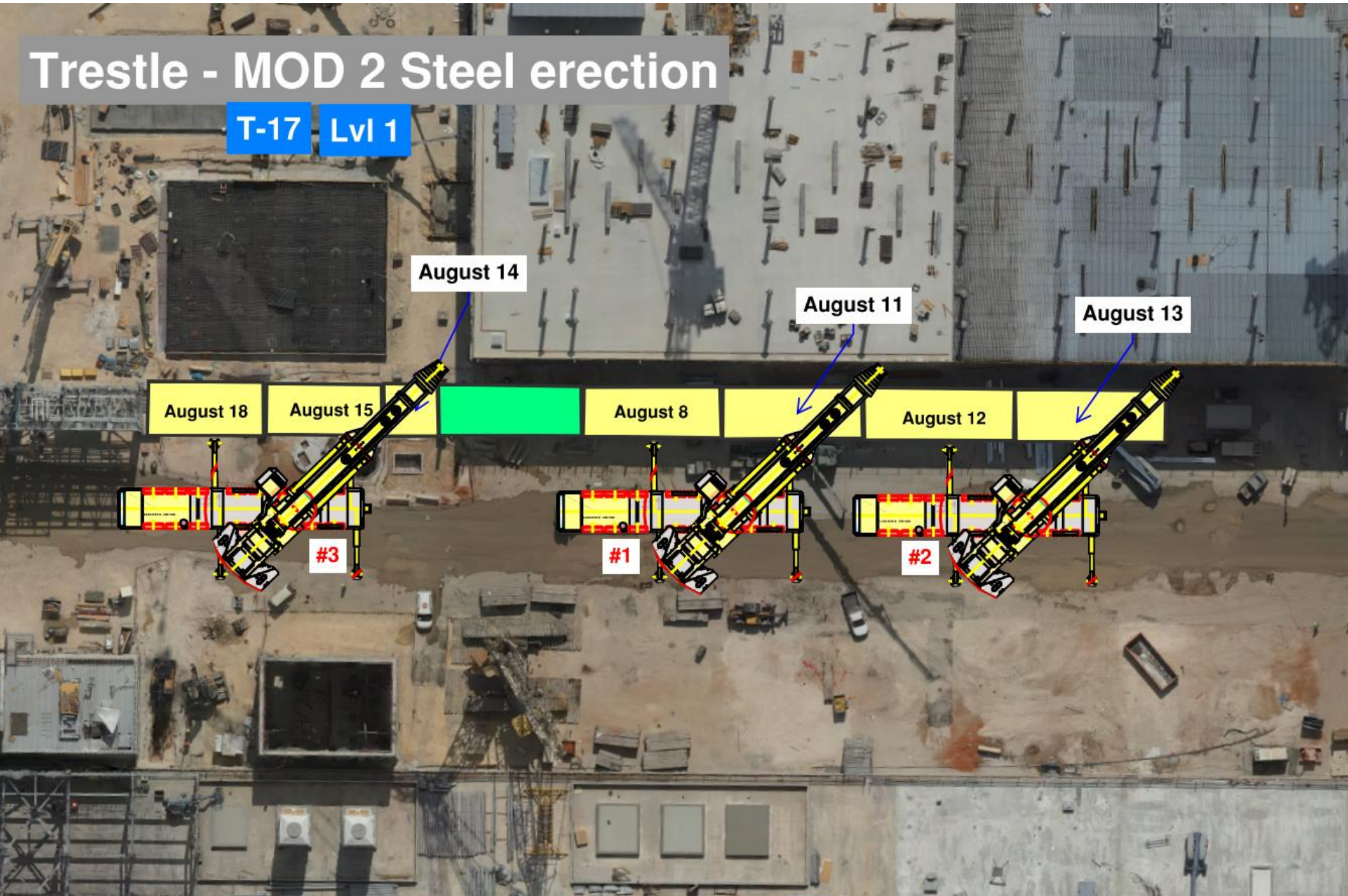
August 8

August 12

#3

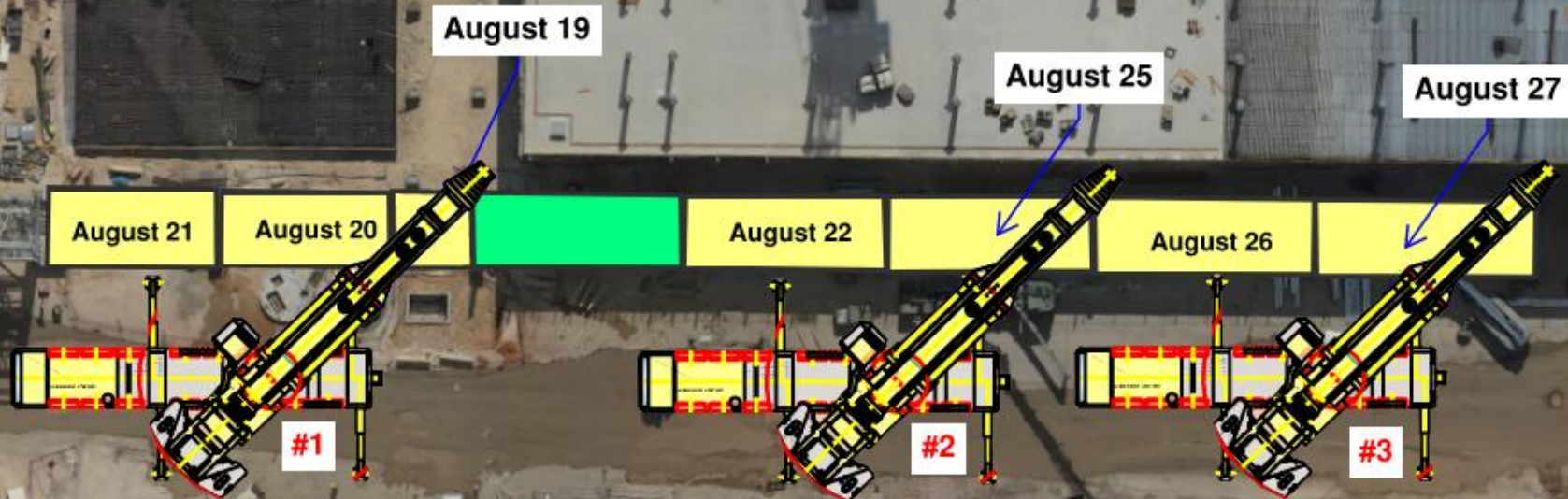
#1

#2



Trestle - MOD 2 Steel erection

T-17 Lvl 2



BSGS

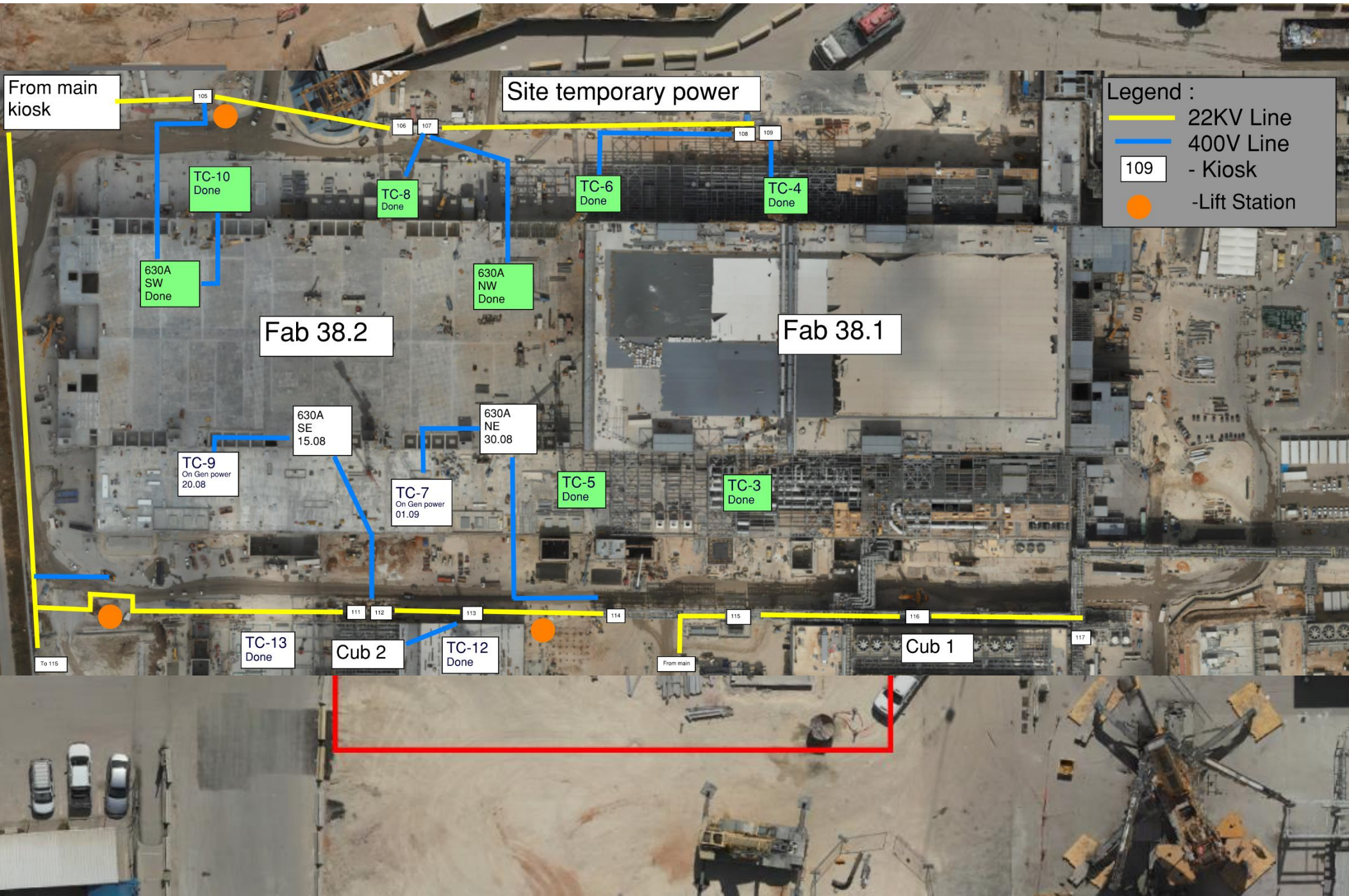


TRESTLE

Lesico 12" natural gas pipe pressure test exclusion zone

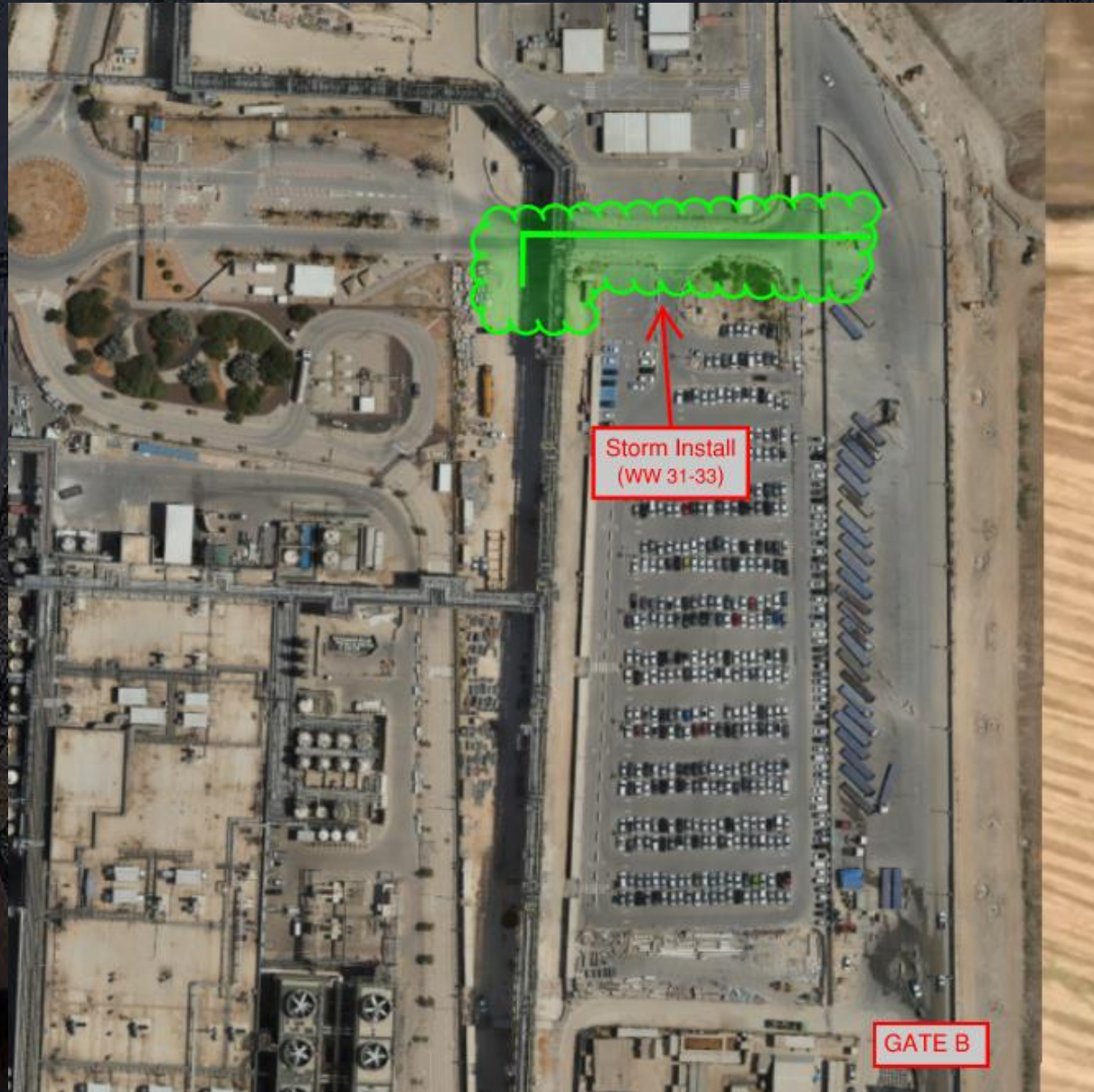
Wednesday, August 21st 1800 -Thursday, Aug 22nd 0100





Daily Coordination Meeting

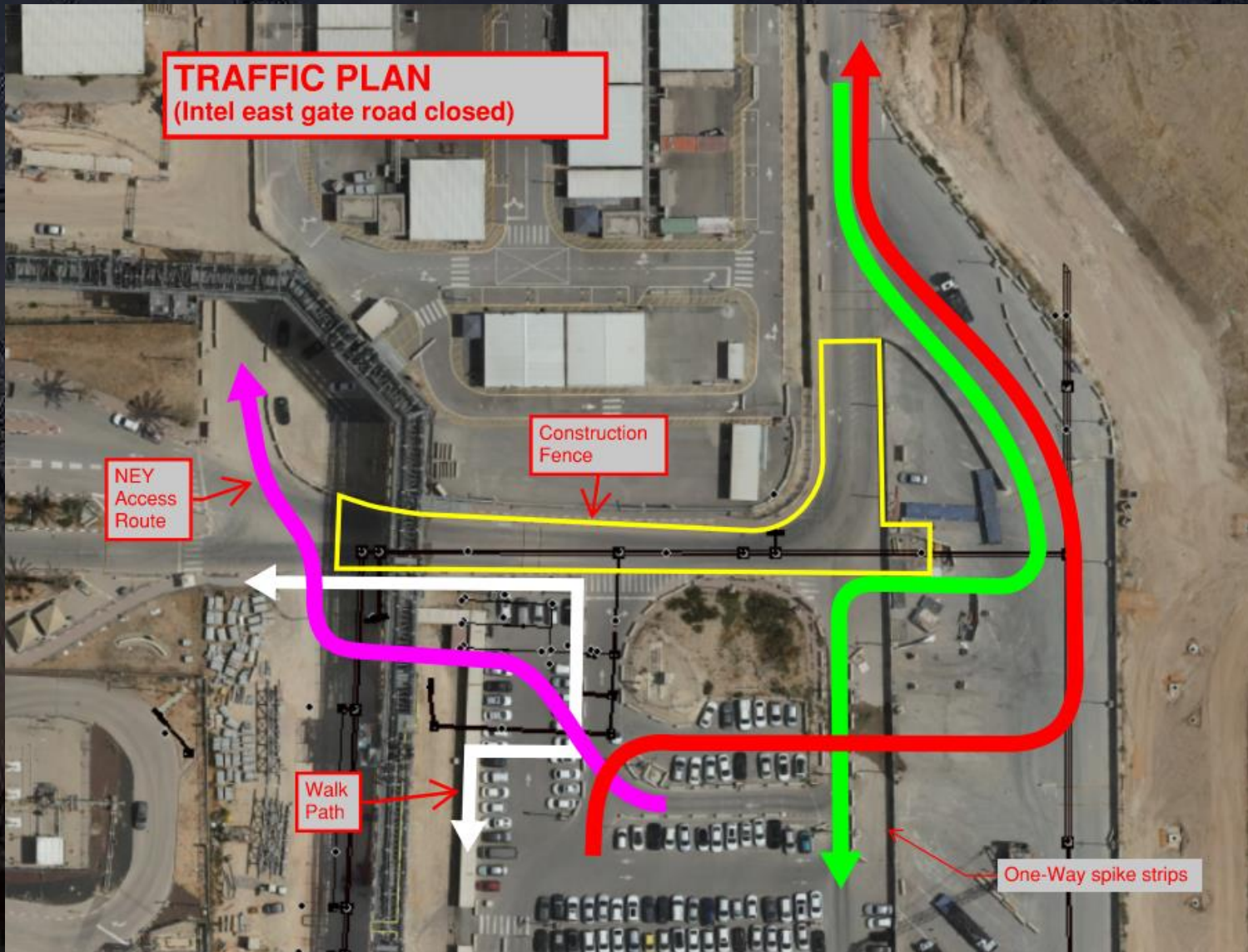
Site Logistics
North Gate B



Daily Coordination Meeting

Site Logistics

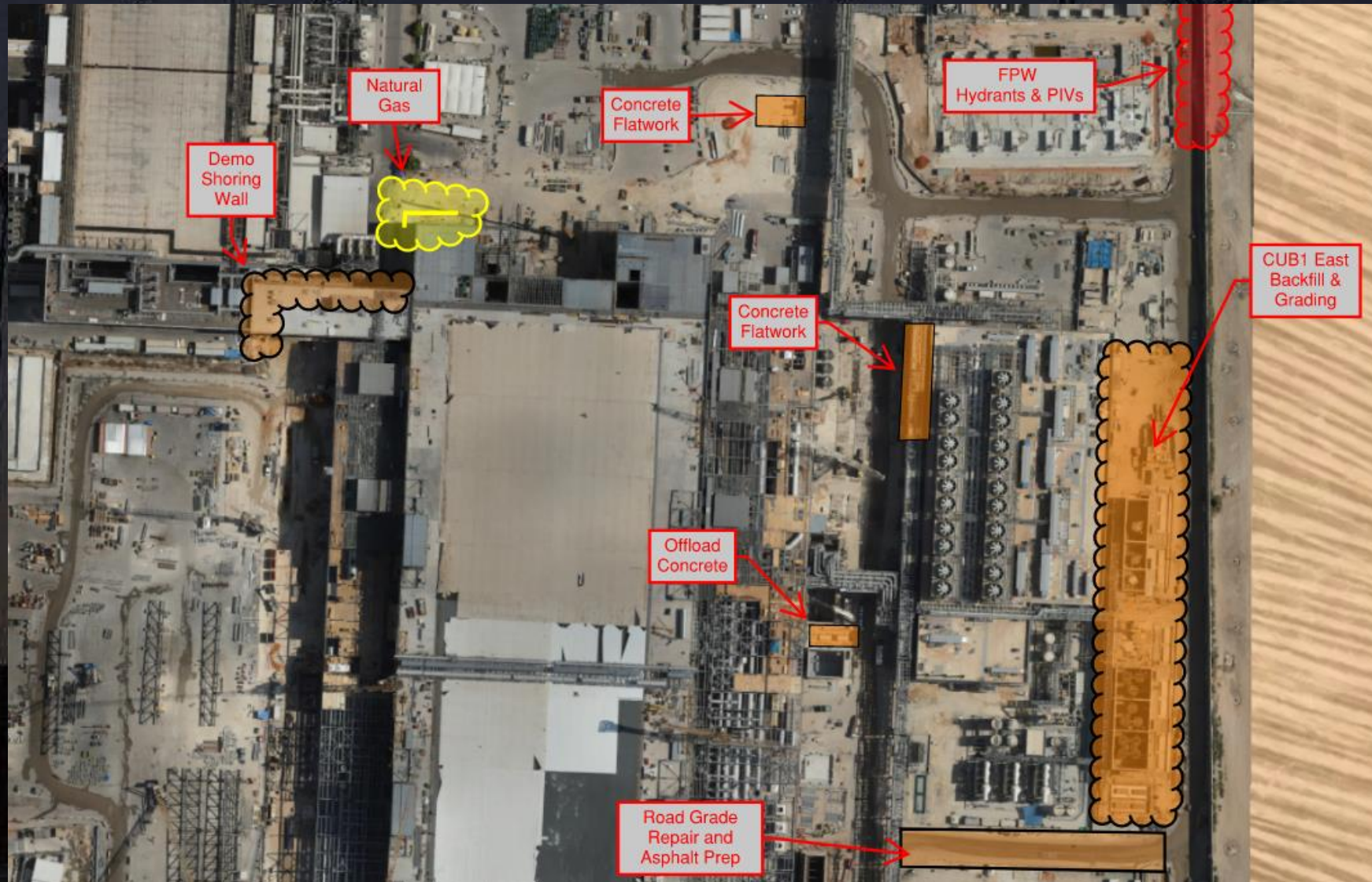
Traffic Plan



Daily Coordination Meeting

Site Logistics

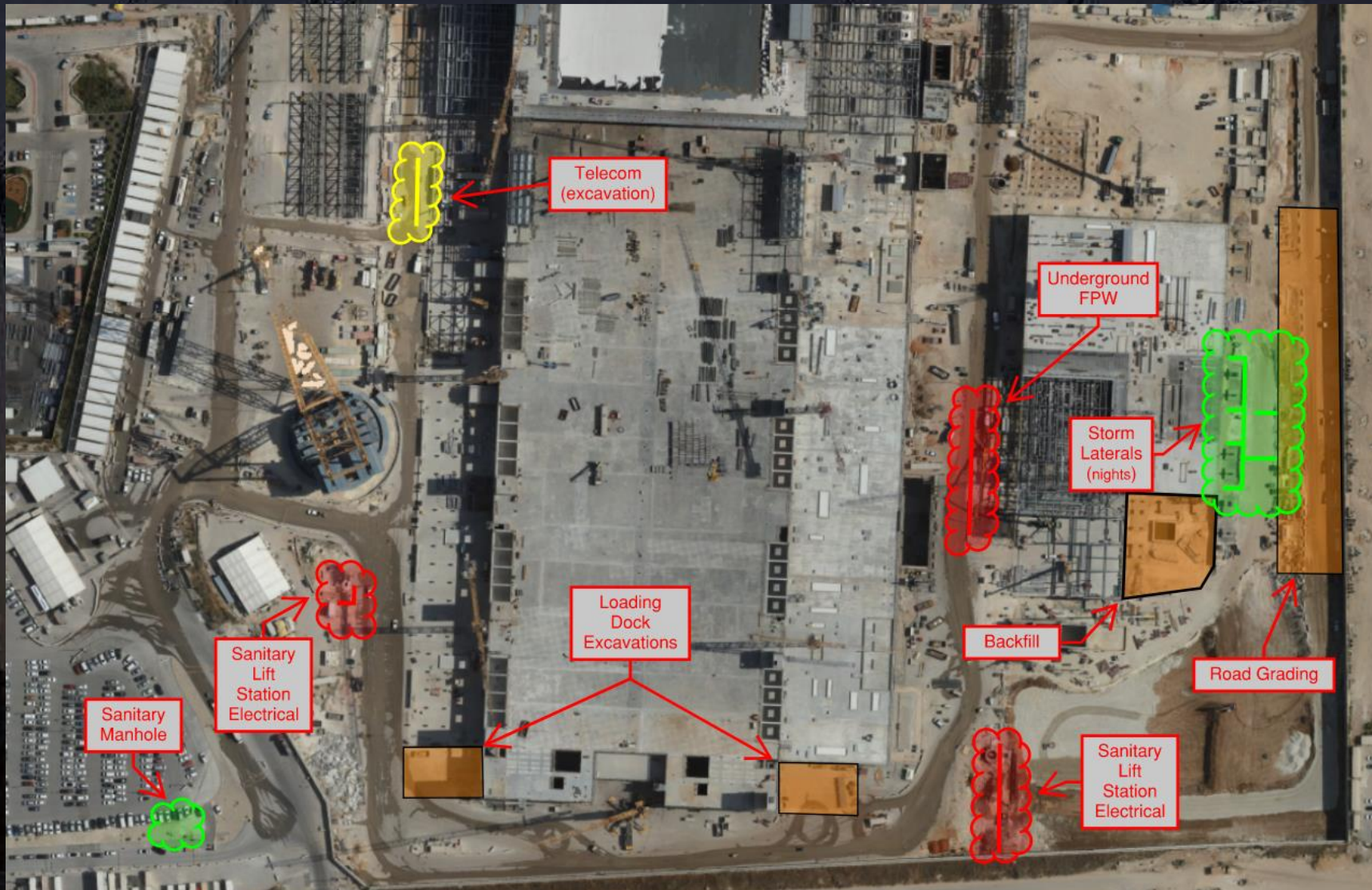
North



Daily Coordination Meeting

Site Logistics

South

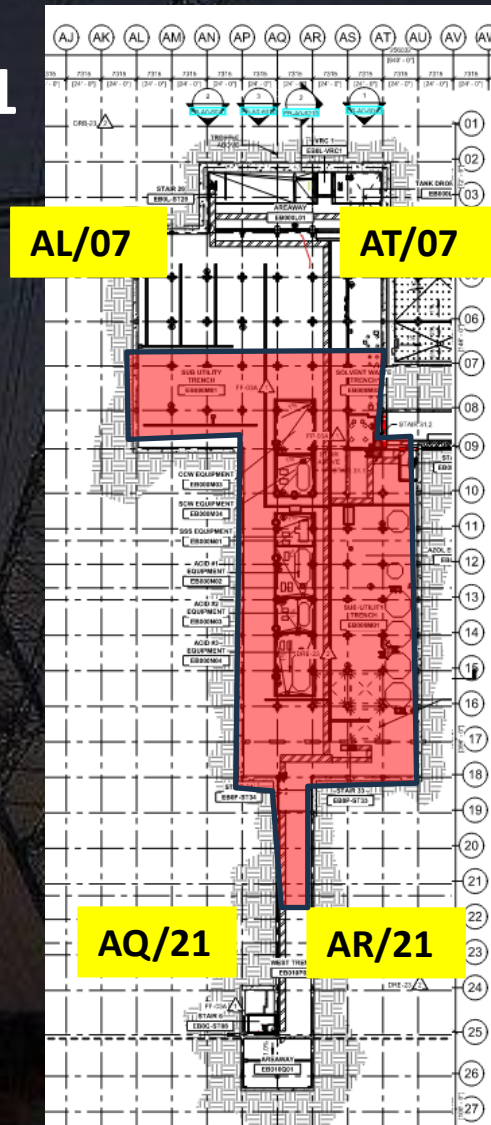




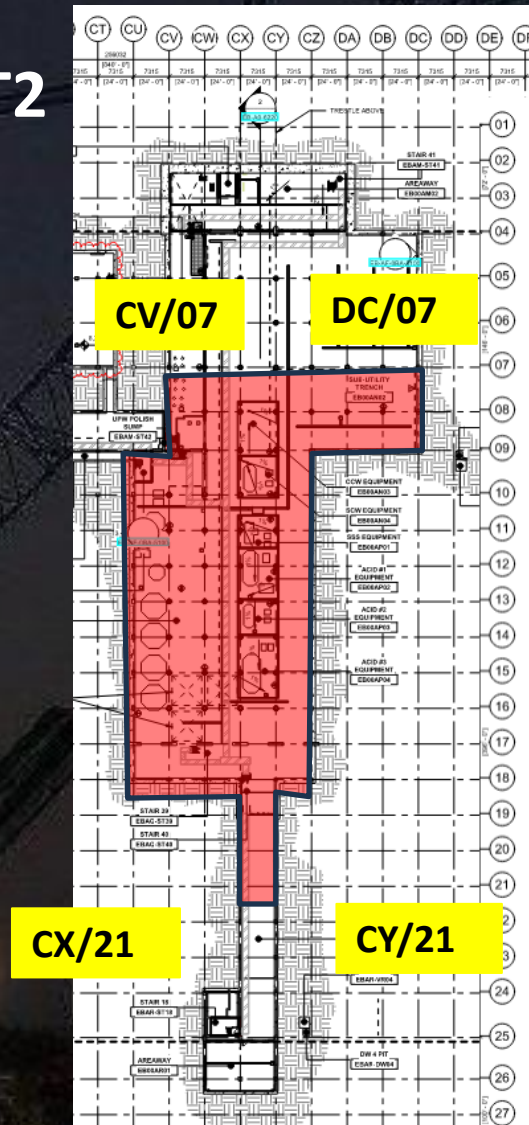
Daily Coordination Meeting

Site Logistics - Protected Areas (SUT Level)

SUT1

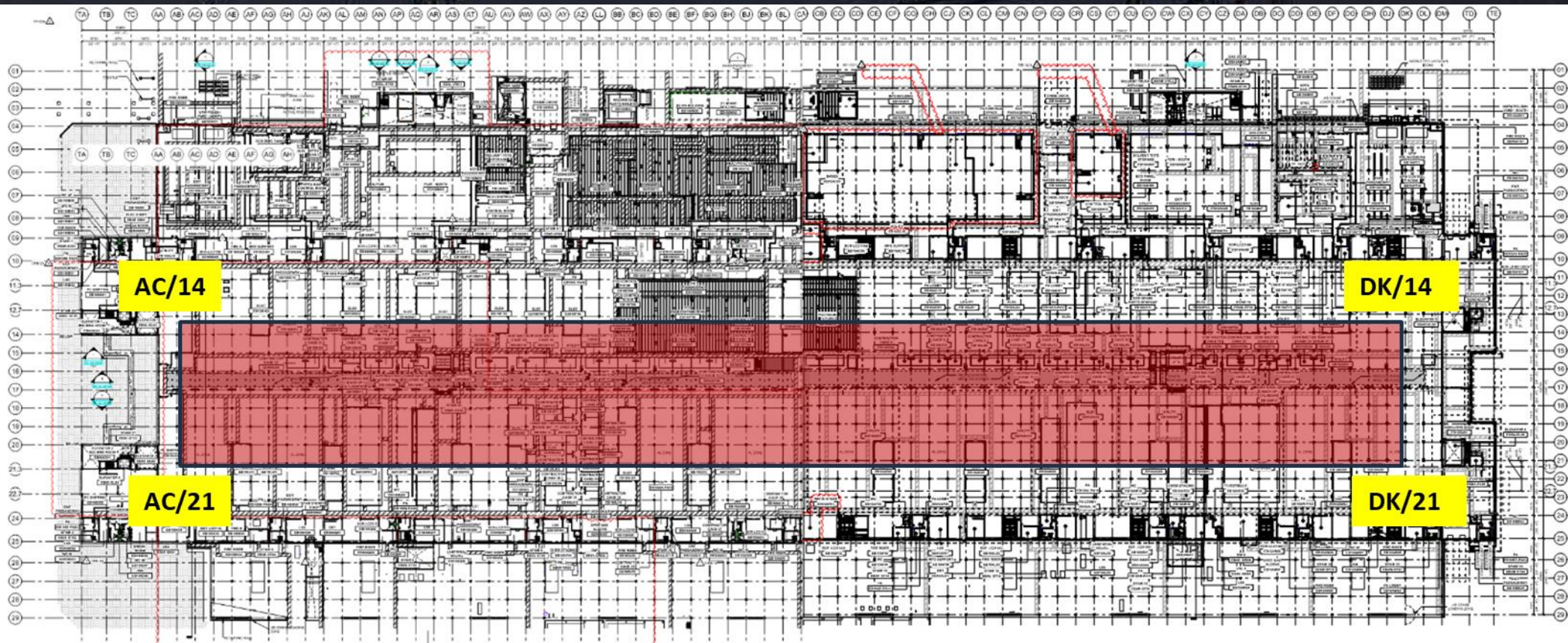


SUT2



Daily Coordination Meeting

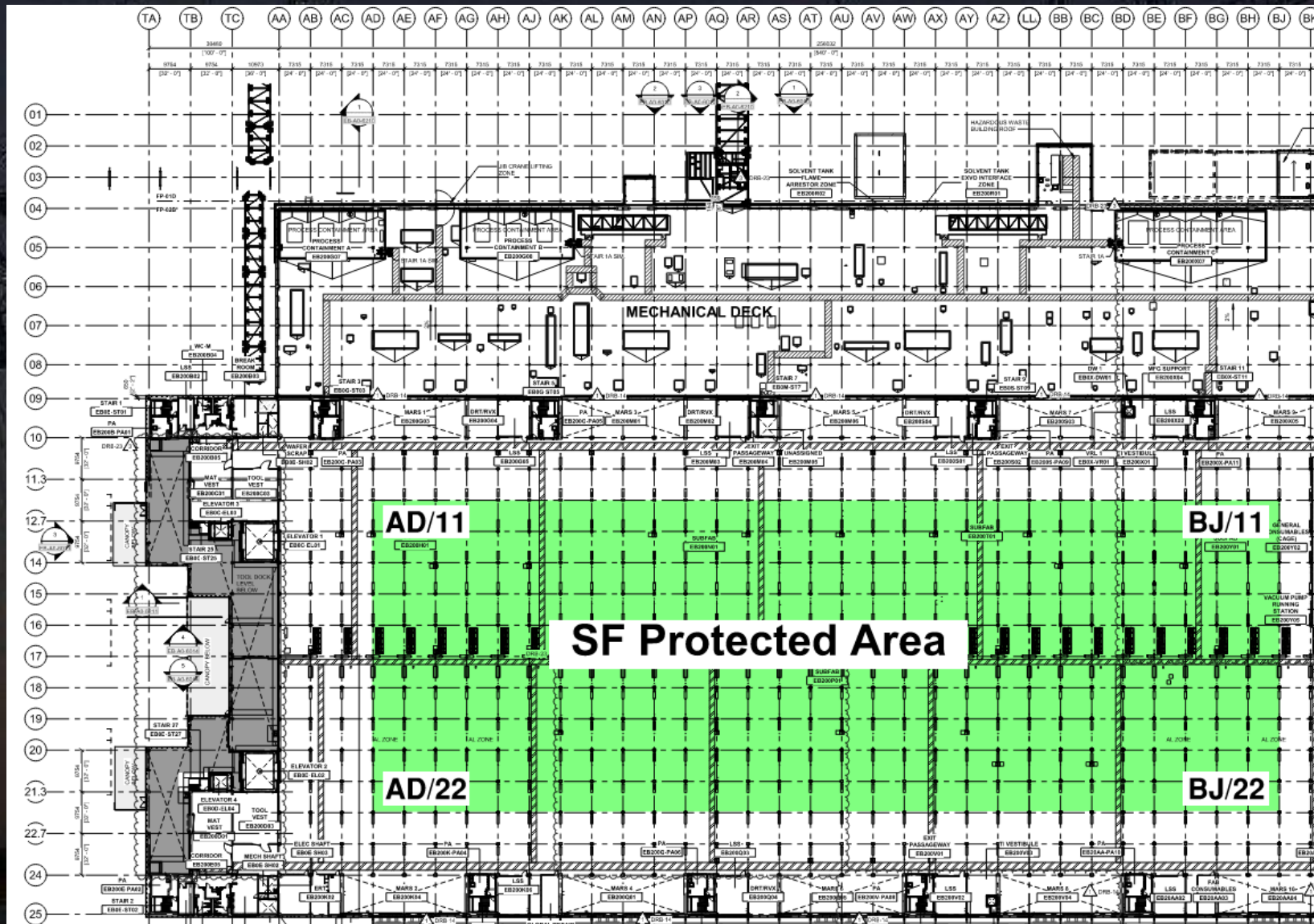
Site Logistics - Protected Areas (Utility Level)





Daily Coordination Meeting

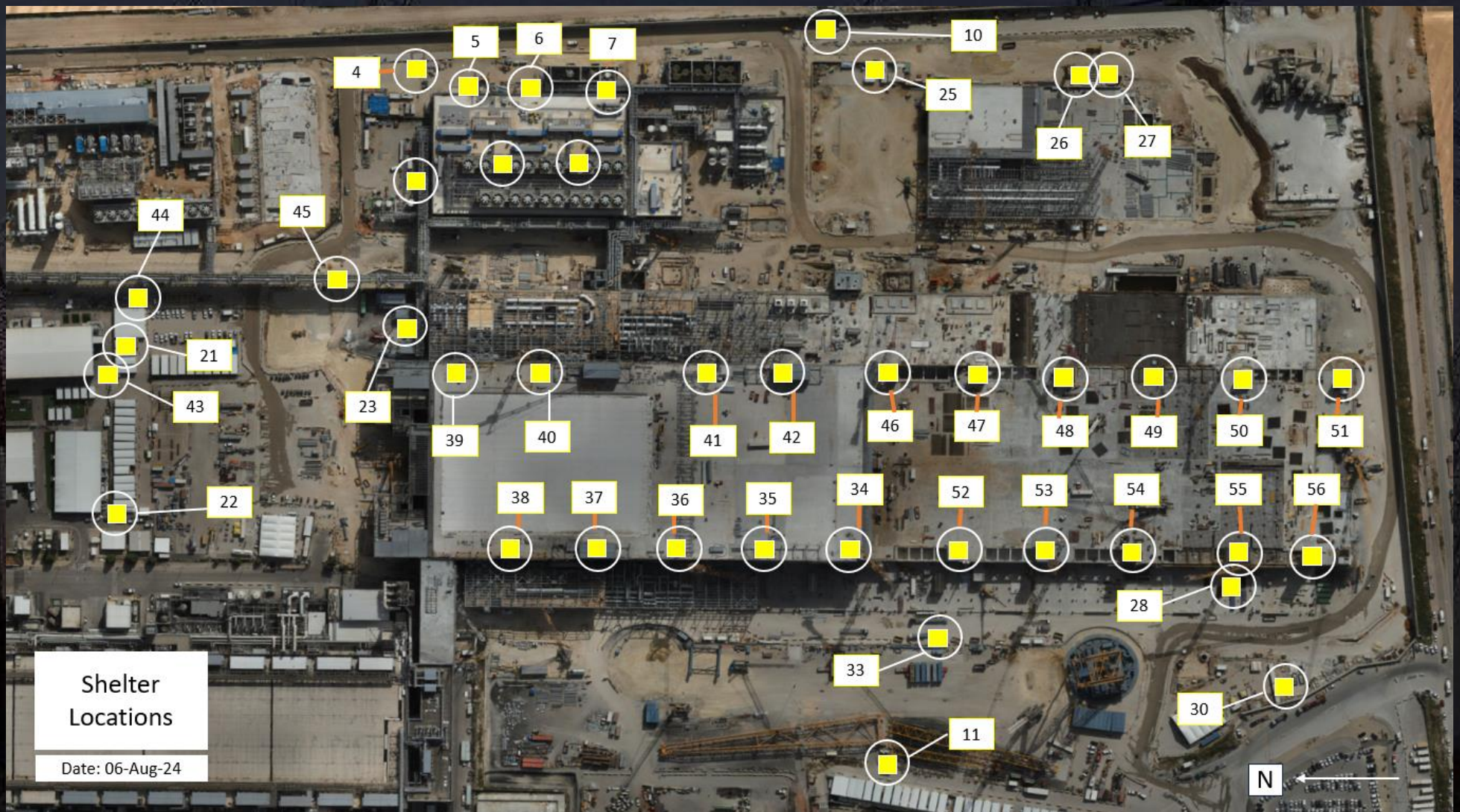
Site Logistics - Protected Areas (Subfab Level)



Daily Coordination Meeting

Site Logistics

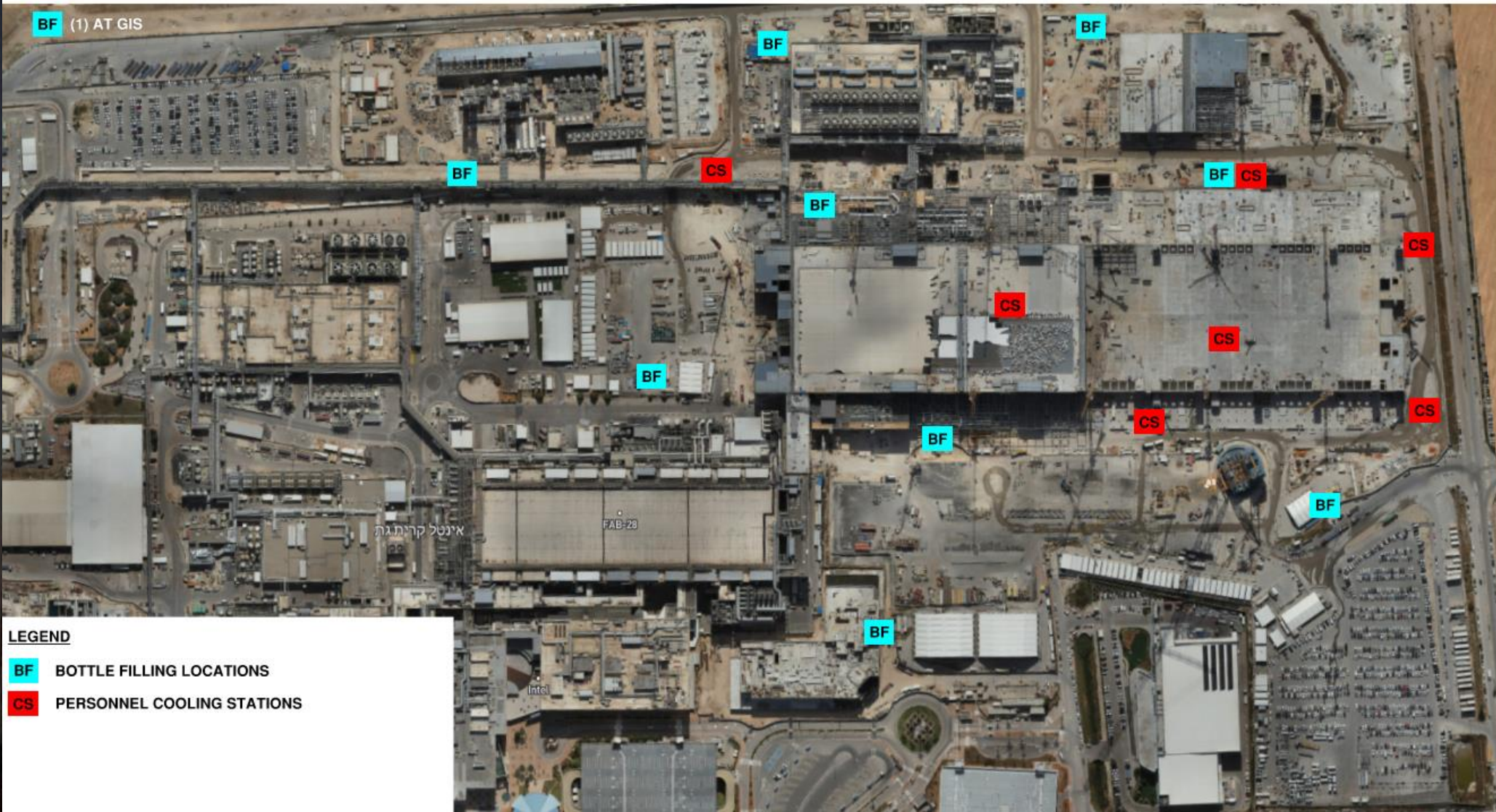
Protected Areas



Daily Coordination Meeting

WATER BOTTLE FILLING & PERSONNEL COOLING STATIONS

BF (1) AT GIS



Deep Cleaning of Break Tent B on Friday 16th Aug



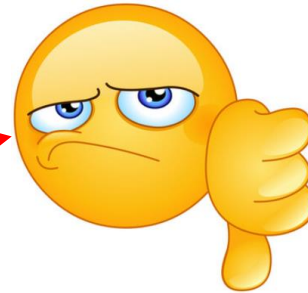
Commissioning

WW32

TCC Predicted: 69 (197 past due)

TCC Completed: **90**

Delta: **+21** (-176 total)



CCC Predicted: **35** (17 past due)

CCC Completed: **59**

Delta: **+24**



GT Predicted: **8** (30 past due)

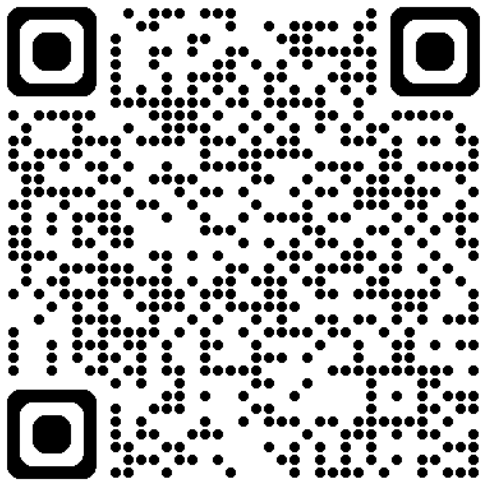
GT Completed: **51**

Delta: **+43**



Stop and Think- We've Got the Power

57 subcontractor folks signed into the meeting yesterday. Yet only 24 Stop and Thinks were done by people that don't work for HCC yesterday.



Are you aware of the power that was recently introduced on site? What type of power is it? *

How does this affect you? *

What other live systems are you working around? *

What are you going to do to protect yourself and others from this hazardous energy? *

Complete 1 per day

Stop and Think- We've Got the Power

**Subs that HAVE NOT completed a
Stop and Think**



Afcon Control and Automation
Air Products
Atkor
Avi Cranes
Belfor
Binyan Haretz
Chemo Aharon
Derech Afar
EL Fire Proof
Electra

El-Mor Electric
Elram
ETC system
HLM
Katz Arie Stainless Steel
Lesico
Ludan
Malchimim Badarom
Megason Electric
Meptagon

ElectroSafe
Newco-Tech
Rehatot Be'er Sheva
Shuv Eli Electric Engineering
Siemens Industrial
Skyline Cranes & Technologies
TM TEAM
TM TEAM - Job service
Tzur Esh Projects
W&W - AFCO Steel LLC
Yerushalmi Water Cooling Tower







Complete 1 per day



Heat Index- August 13th

	temperature (°F)															
	80	82	84	86	88	90	92	94	96	98	100	102	104	106	108	110
40	80	81	83	85	88	91	94	97	101	105	109	114	119	124	130	136
45	80	82	84	87	89	93	96	100	104	109	114	119	124	130	137	
50	81	83	85	88	91	95	99	103	108	113	118	124	131	137		
55	81	84	86	89	93	97	101	106	112	117	124	130	137			
60	82	84	88	91	95	100	105	110	116	123	129	137				
65	82	85	89	93	98	103	108	114	121	128	136					
70	83	86	90	95	100	105	112	119	126	134						
75	84	88	92	97	103	109	116	124	132							
80	84	89	94	100	106	113	121	129								
85	85	90	96	102	110	117	126	135								
90	86	91	98	105	113	122	131									
95	86	93	100	108	117	127										
100	87	95	103	112	121	132										

 Caution
  Extreme Caution
  Danger
  Extreme Danger

Extreme Caution

- Ensuring water and shaded areas available
- Acclimating workers
- Emergency planning and response
- Training workers and supervisors on the signs of heat stress and preventative measures
- Modified work schedules and/or rotating out workers
- Monitoring of workers for signs of heat stress

Daily Coordination Meeting



14:00 Sign In