

Daily Coordination Meeting

General Topics:

- Vehicle passes- pick up your passes from Safety trailer #12 by end of day Thursday

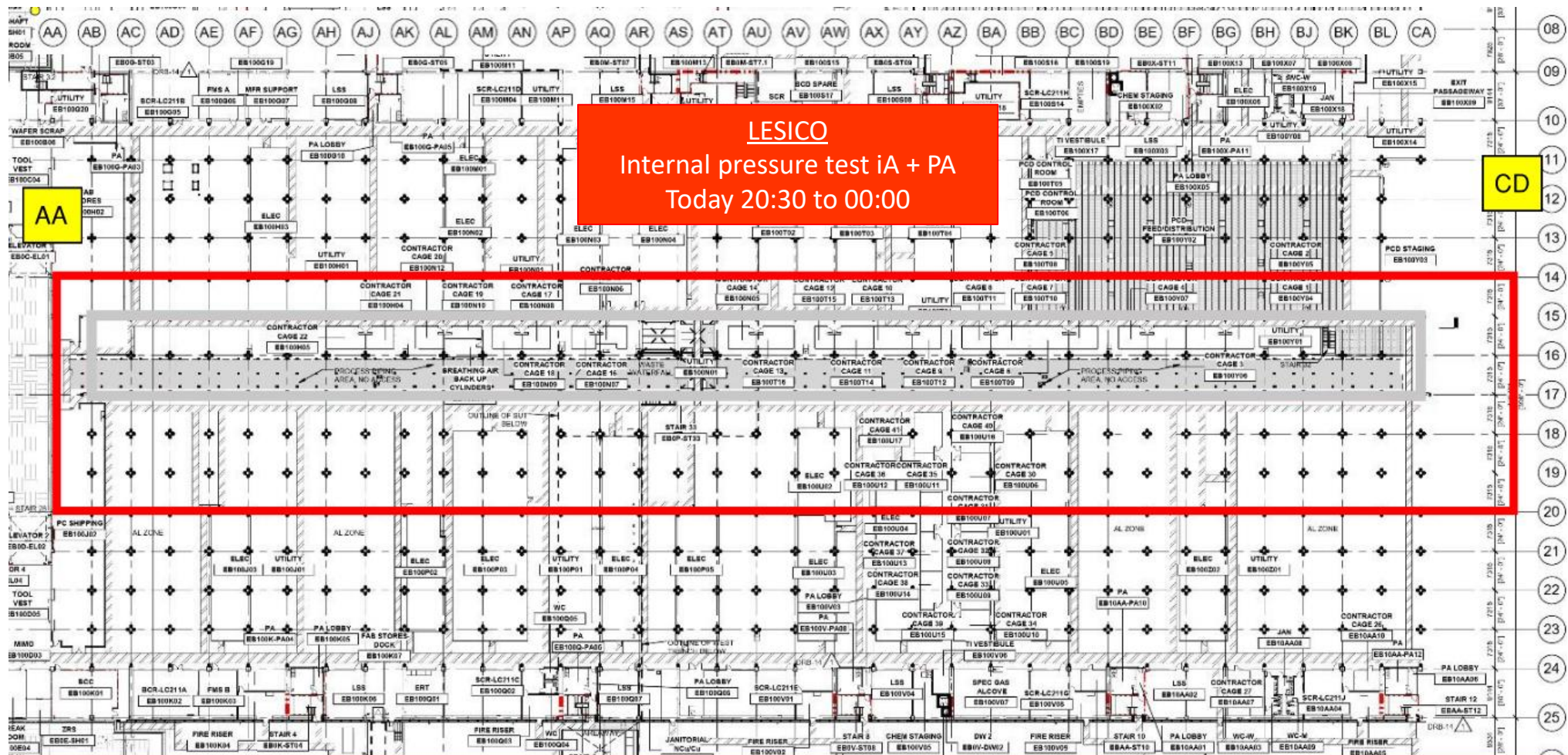




SCCA CUB2
12:00am



UTILITY LEVEL





HOFFMAN CONSTRUCTION COMPANY

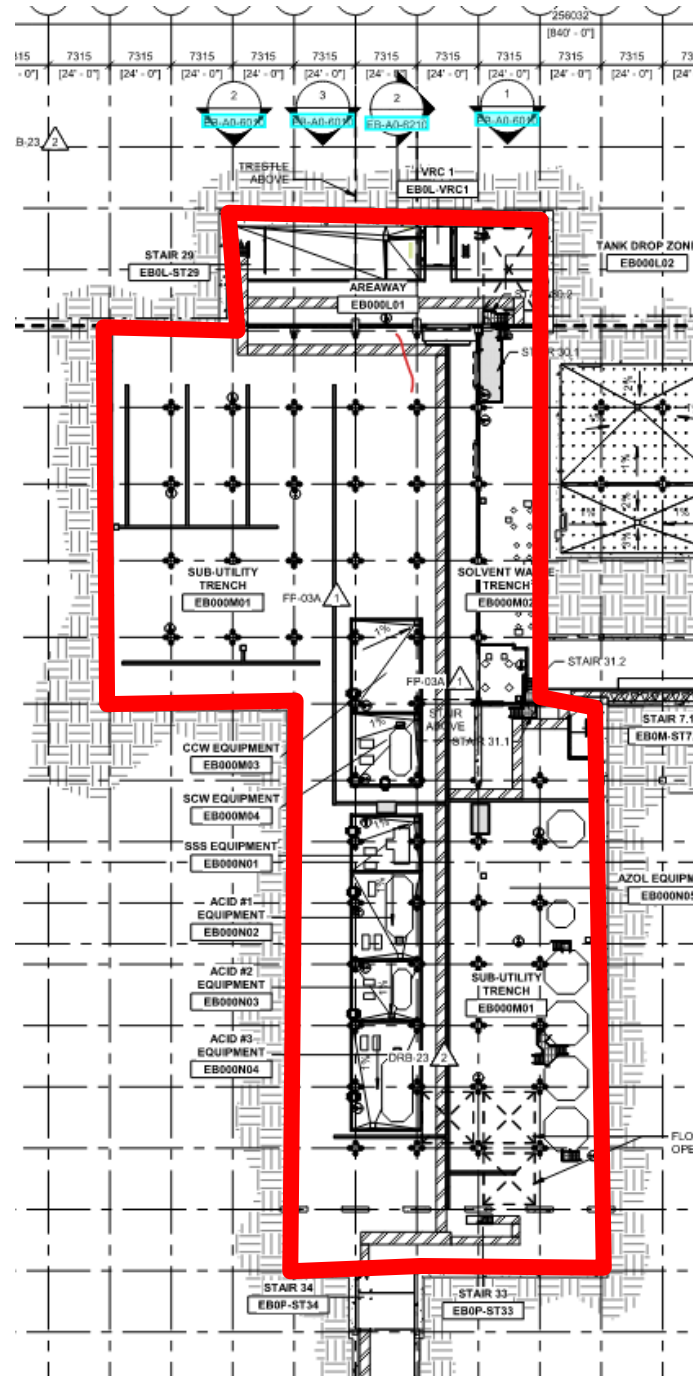


SUT

LESICO

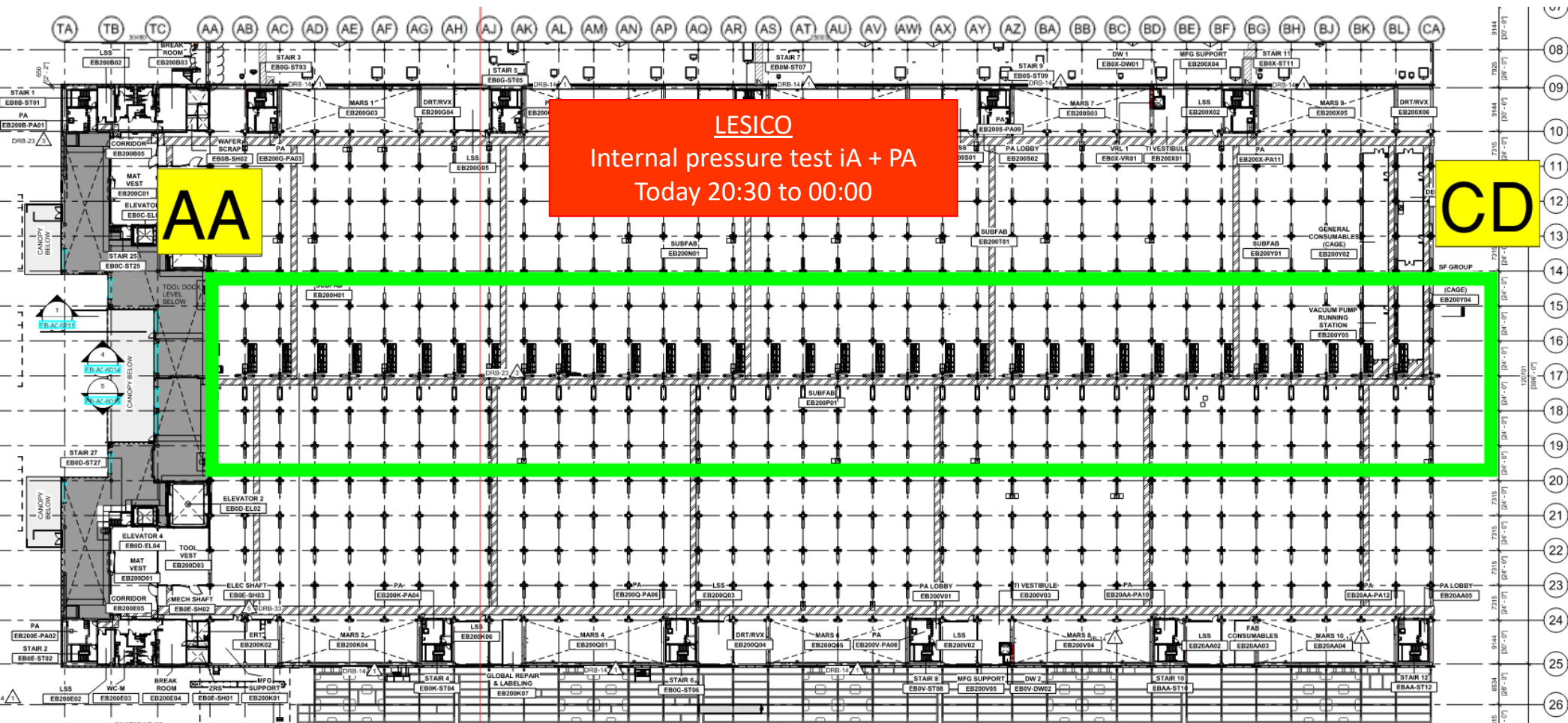
Internal pressure test iA + PA

Today 20:30 to 00:00



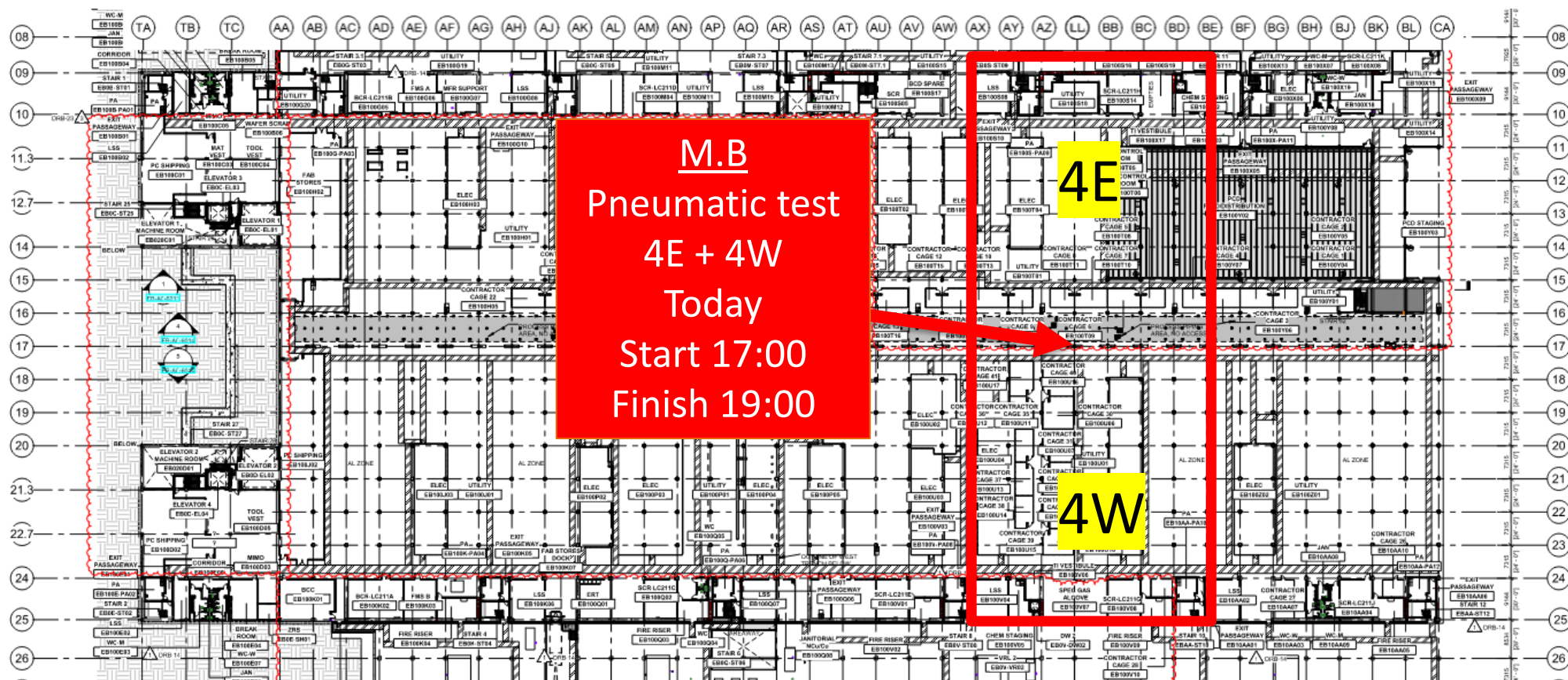
LESICO
Internal pressure test iA + PA
Today 20:30 to 00:00

CD





UTILITY LEVEL MOD1





TA TB TC AA AB AC AD AE AF AG AH AJ AK AL AM AN AP AQ AR AS AT AU AV AW AX AY AZ LL BB BC BD BE BF BG BH BJ BK BL CA

07 08 09 10 11 12 13 14 15 16 17 18 19 20 21 22 23 24 25 26

Mold remediation
FMS A room
Afcon elect
Afcon Ctrl
Megason

ELRAM
PCD Bathtub
walls!

COMBE
Waste pipes at PCD
Bathtub

Belfor
Need to be DONE
at BCC room

Talad
Full close of
GIS34 cage

HYG + HSI
HSI ongoing

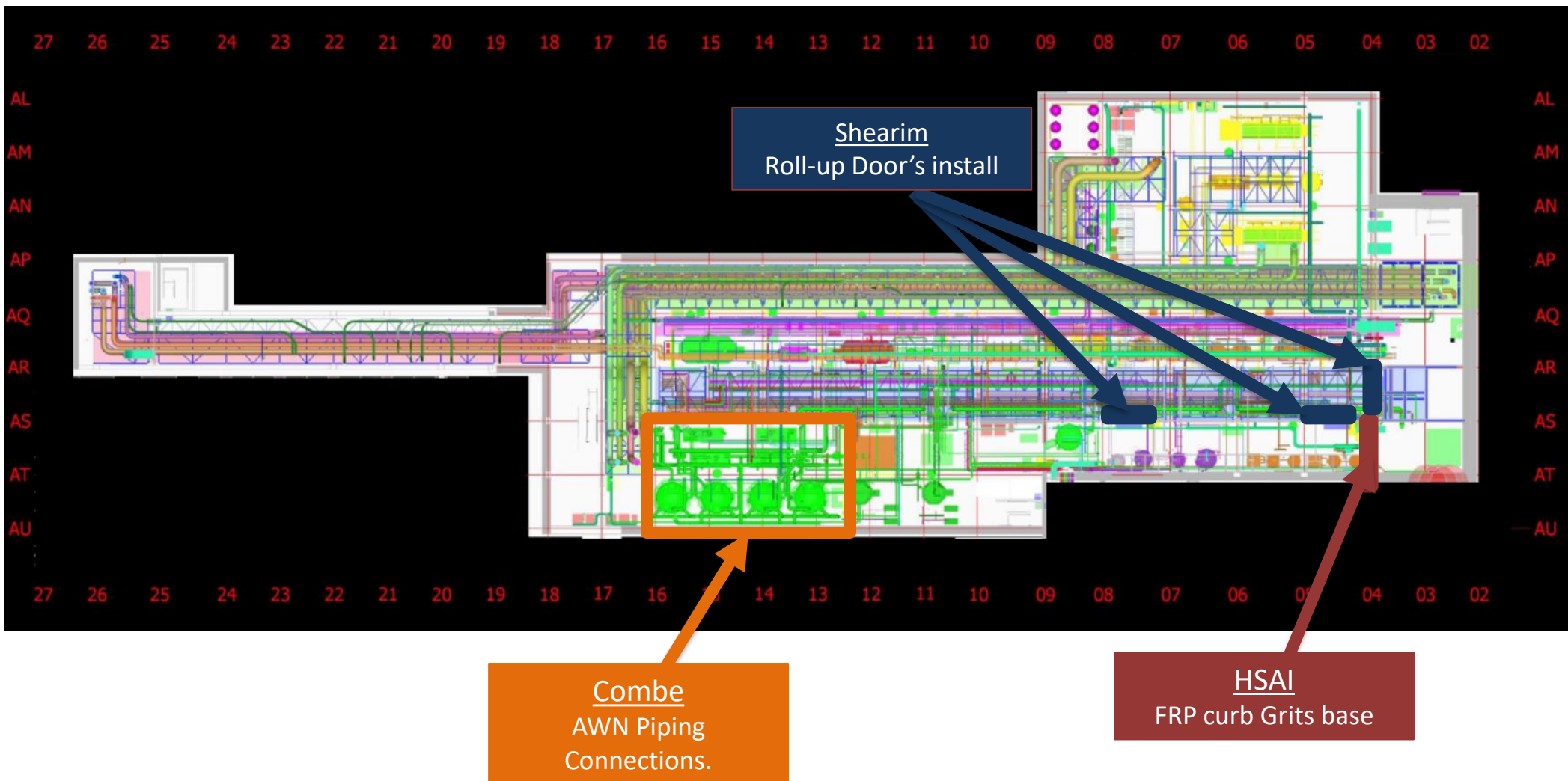


MEPTAGON
9W Bridge strut install
8E Start 7/28

Malhimim
8E 10W
Sprinklers install

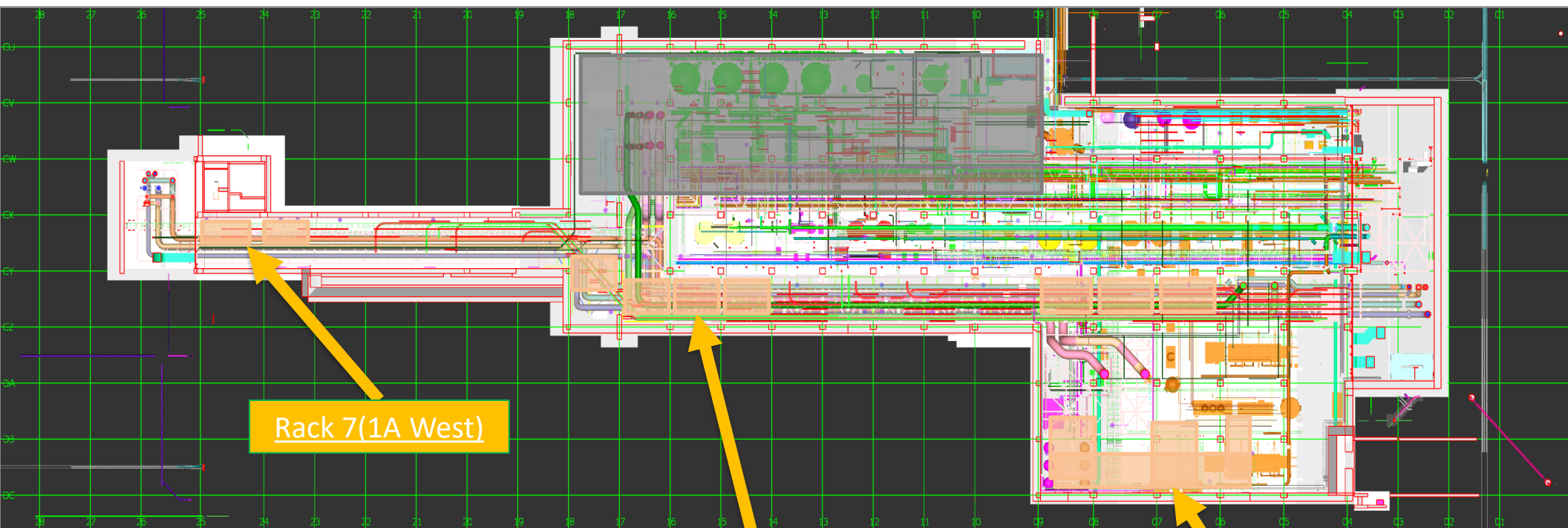


SUT 38.1 LEVEL





SUT 38.2 LEVEL



Rack 7(1A West)

1A Rack
Lifting

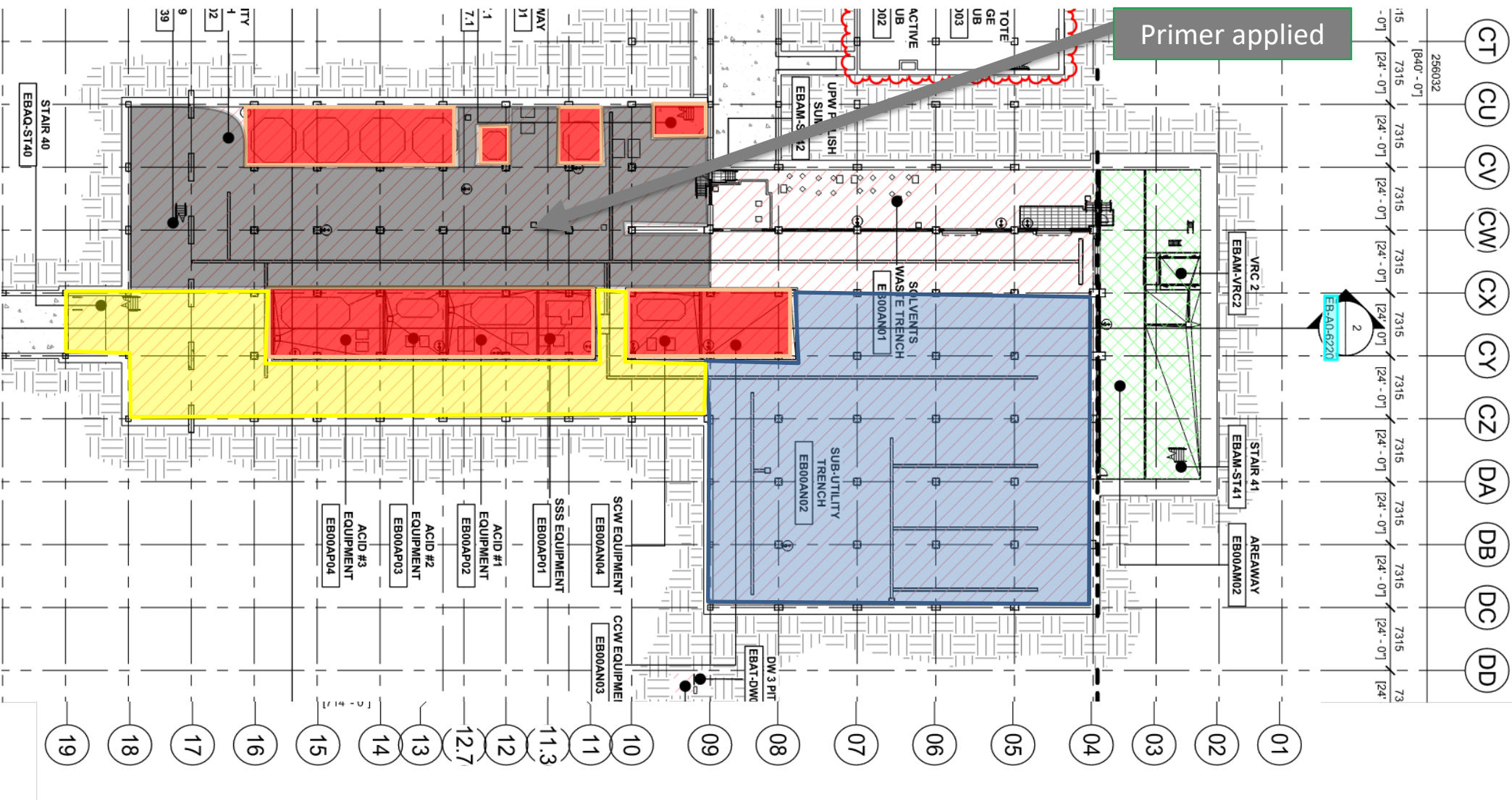
8 Rack

SKE
H&T
CRW
Move-In date ?

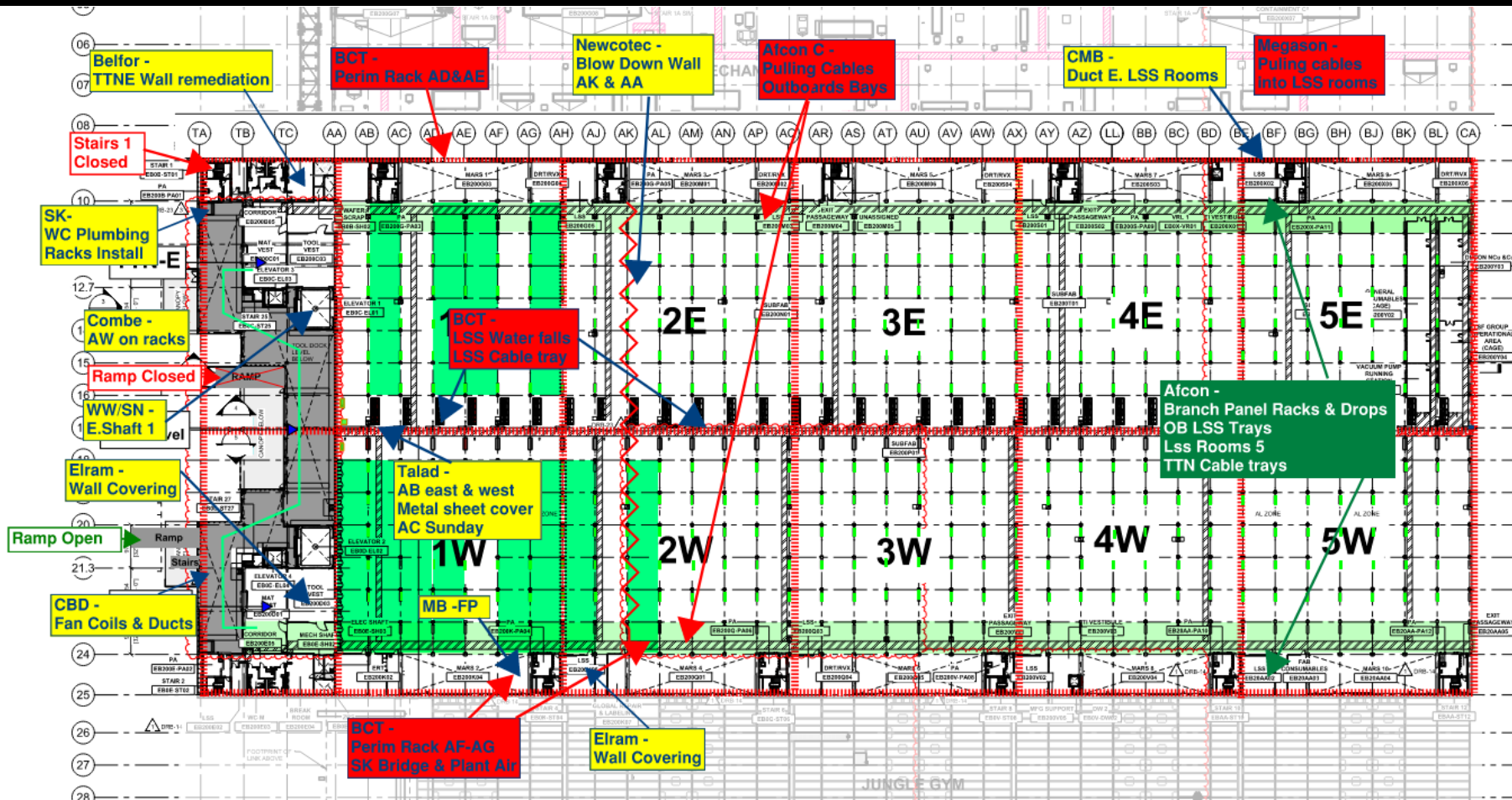
Vesda
H&T



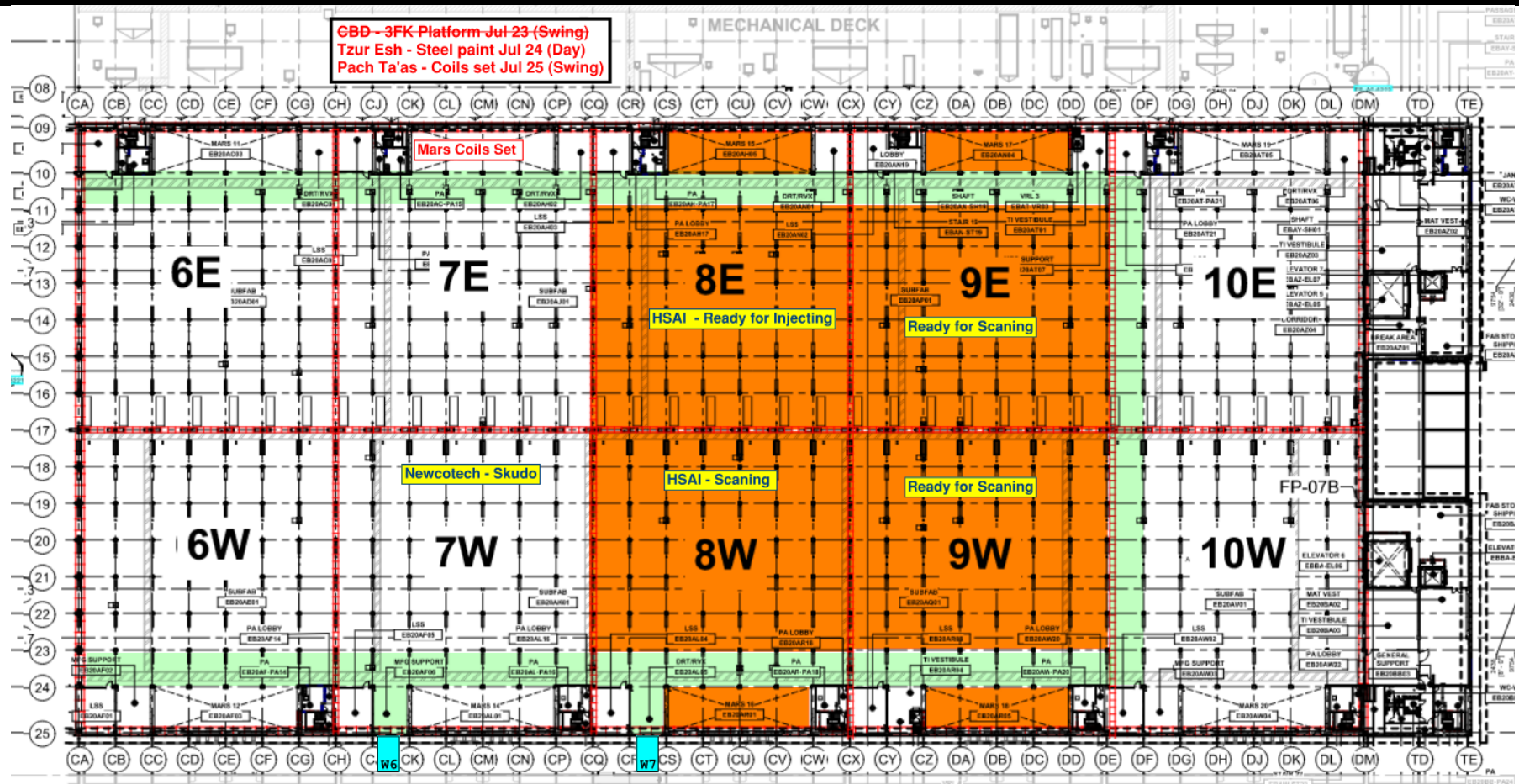
SUT 38.2 LEVEL CRC Plan



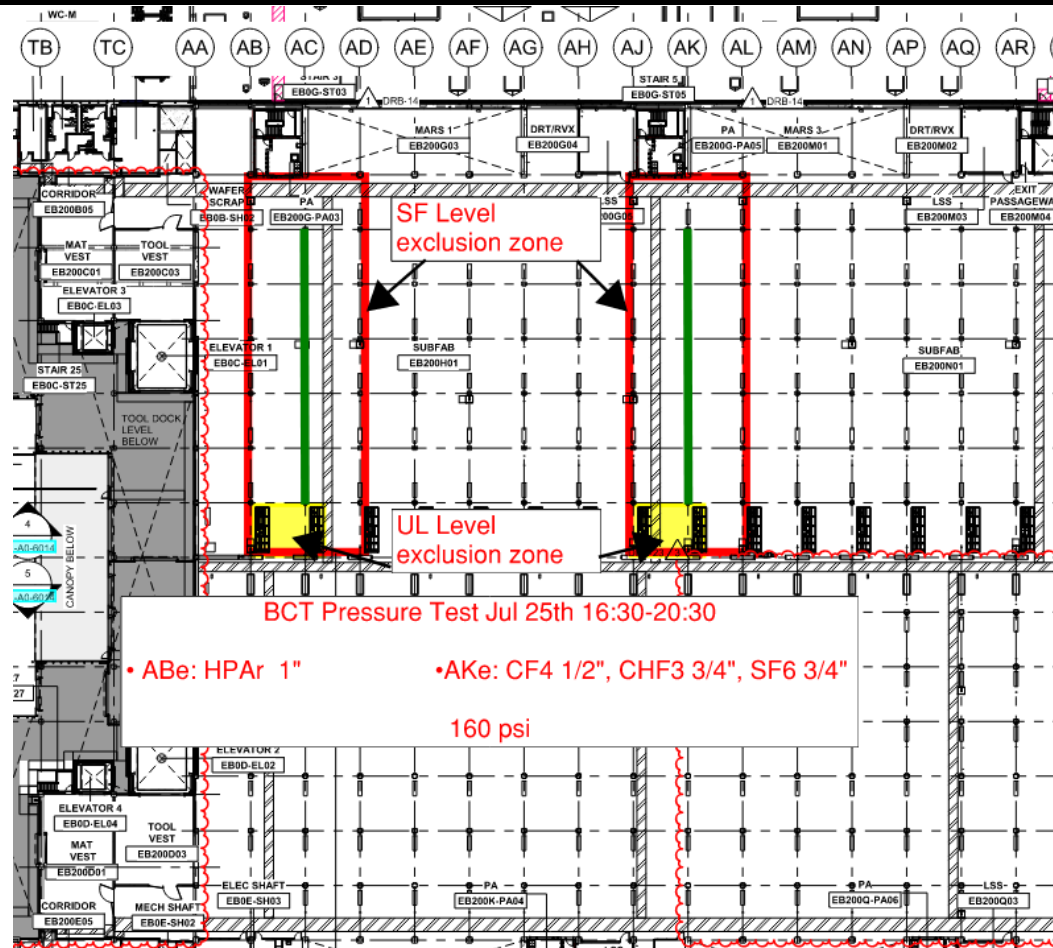
SUBFAB BUILDOUT MOD 1







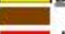




SUBFAB BUILDOUT MOD 2



SUBFAB BUILDOUT MOD 1





- CR level:**
-  **Afcon** - Cable trays, modules and stickers 1W,2E, 2W
 -  **MB** - 1E drops, 1W drops. 2E-2W IFF approved
 -  **Efram** - 10, 24 columns fix/wrap. 9.25 line columns wrapping
 -  **Meptagon** - Zero tolerance pipes 5E-5W. I&C preparations
 -  **D&P** - Ceiling rods 1E, 5E blades install. 16-17 line blades
 -  **Tzur-esh** - 24-25 lines. 4E.
 -  **HYG** - 1W Litho crane plates install, 5W Litho crane steel
 -  **PT** - Duct prep for test AA-AH east
 -  **Talad** - Seismic cables 1W.

Before - 1W 25 line ongoing moving to 1E

NTTE/W

YVW/SN - west side welding tabs and replacing beams
Efram - East/West floor done QA/QC
SK - east side pipes needs to be completed
HYG - East to finish steel. West receiving material

1E

2E

3E

4E

5E

FAB BALLROOM

1W

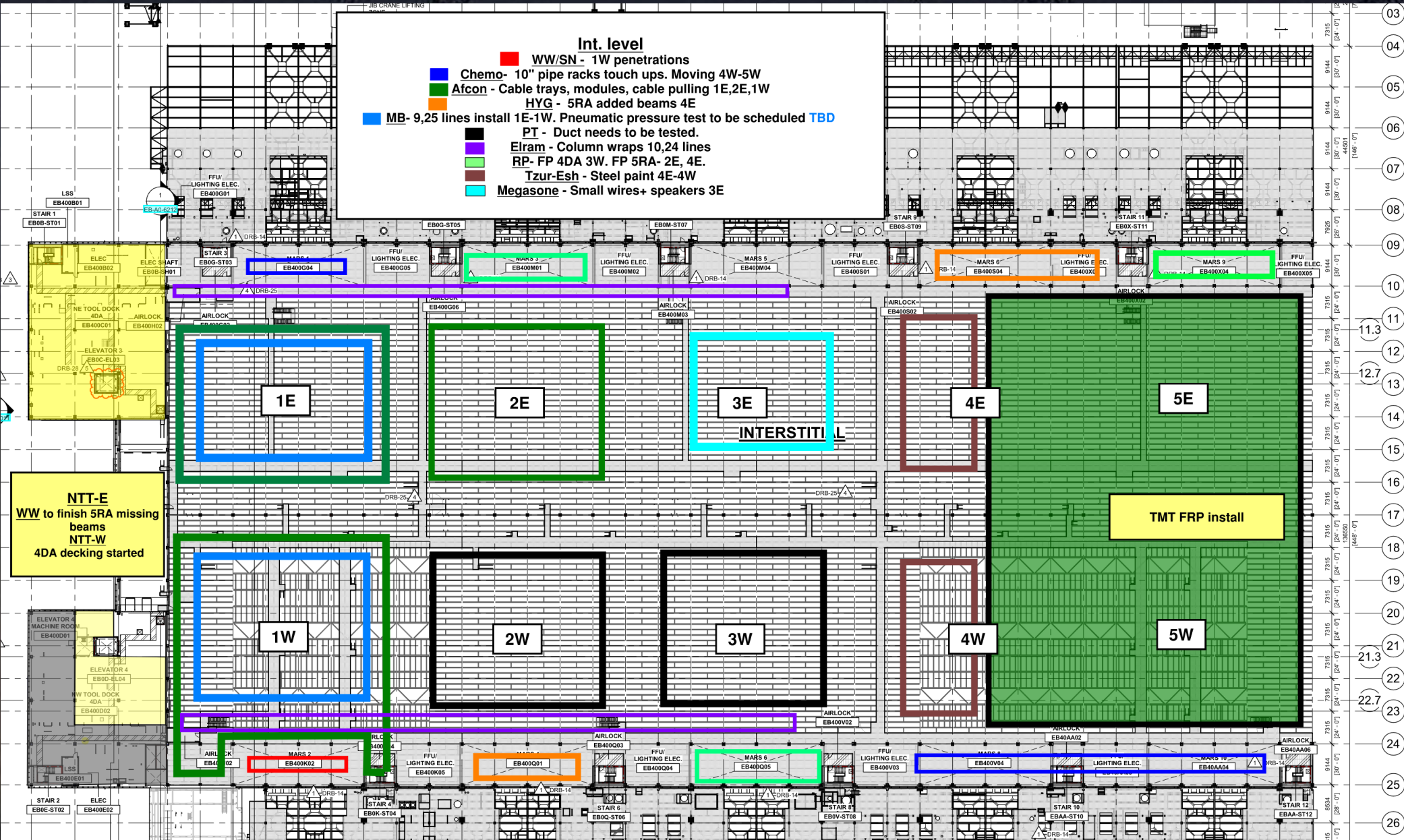
2W

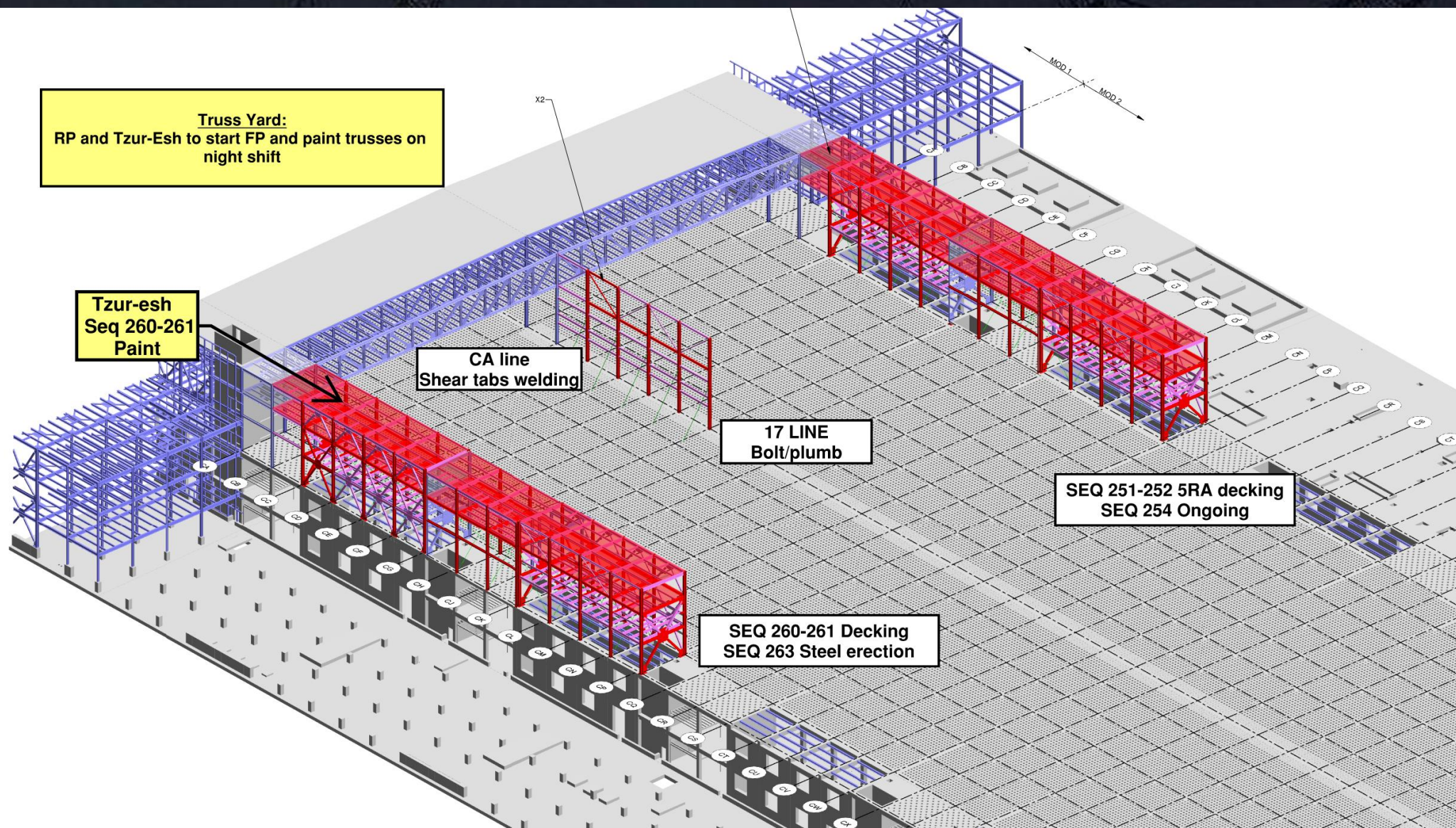
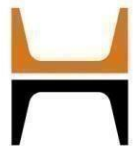
3W

4W

5W

Link
RP - Fire proofing
D&P - Bolts torque





Truss Yard:
RP and Tzur-Esh to start FP and paint trusses on night shift

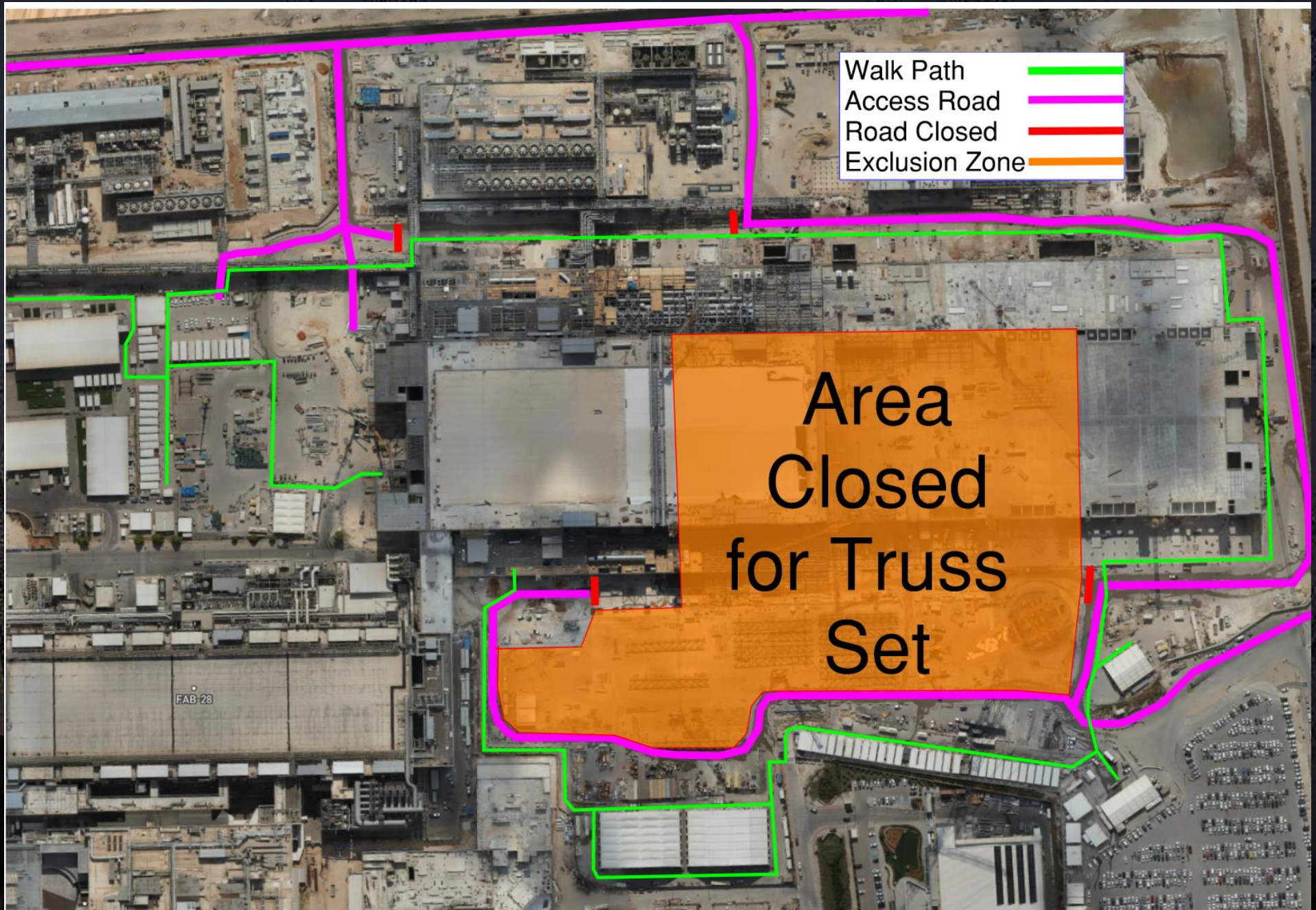
Tzur-esh
Seq 260-261
Paint

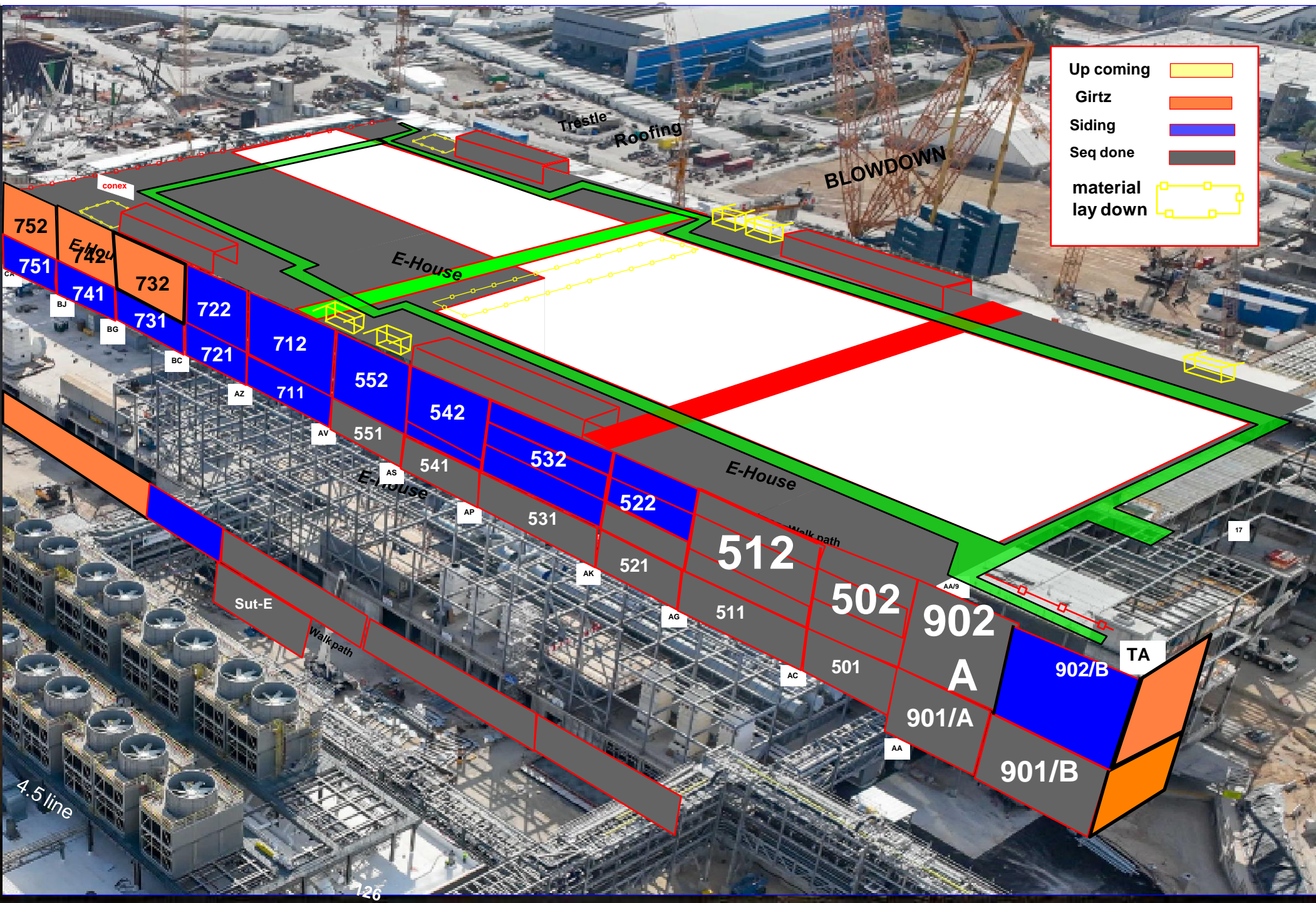
CA line
Shear tabs welding

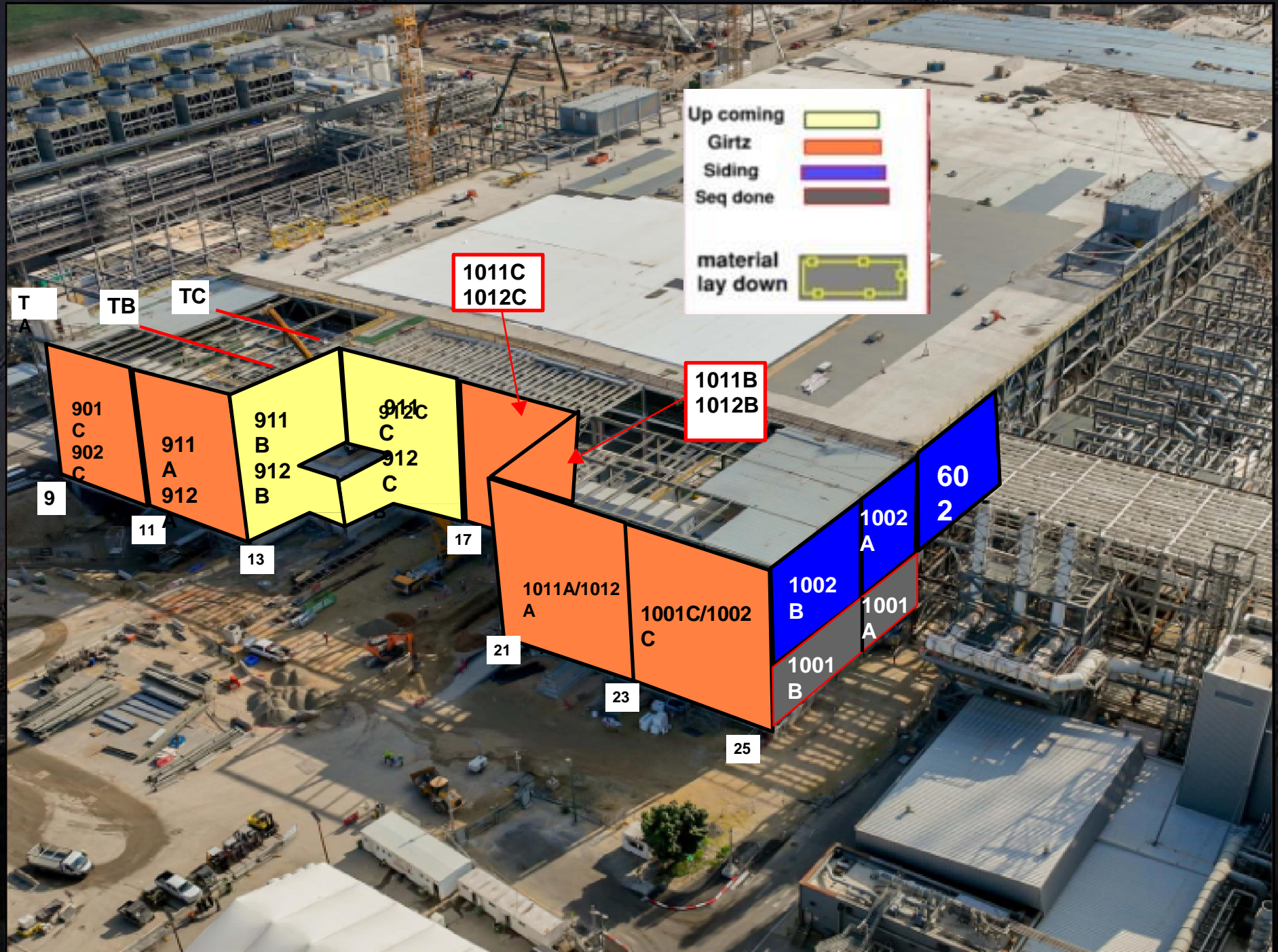
17 LINE
Bolt/plumb

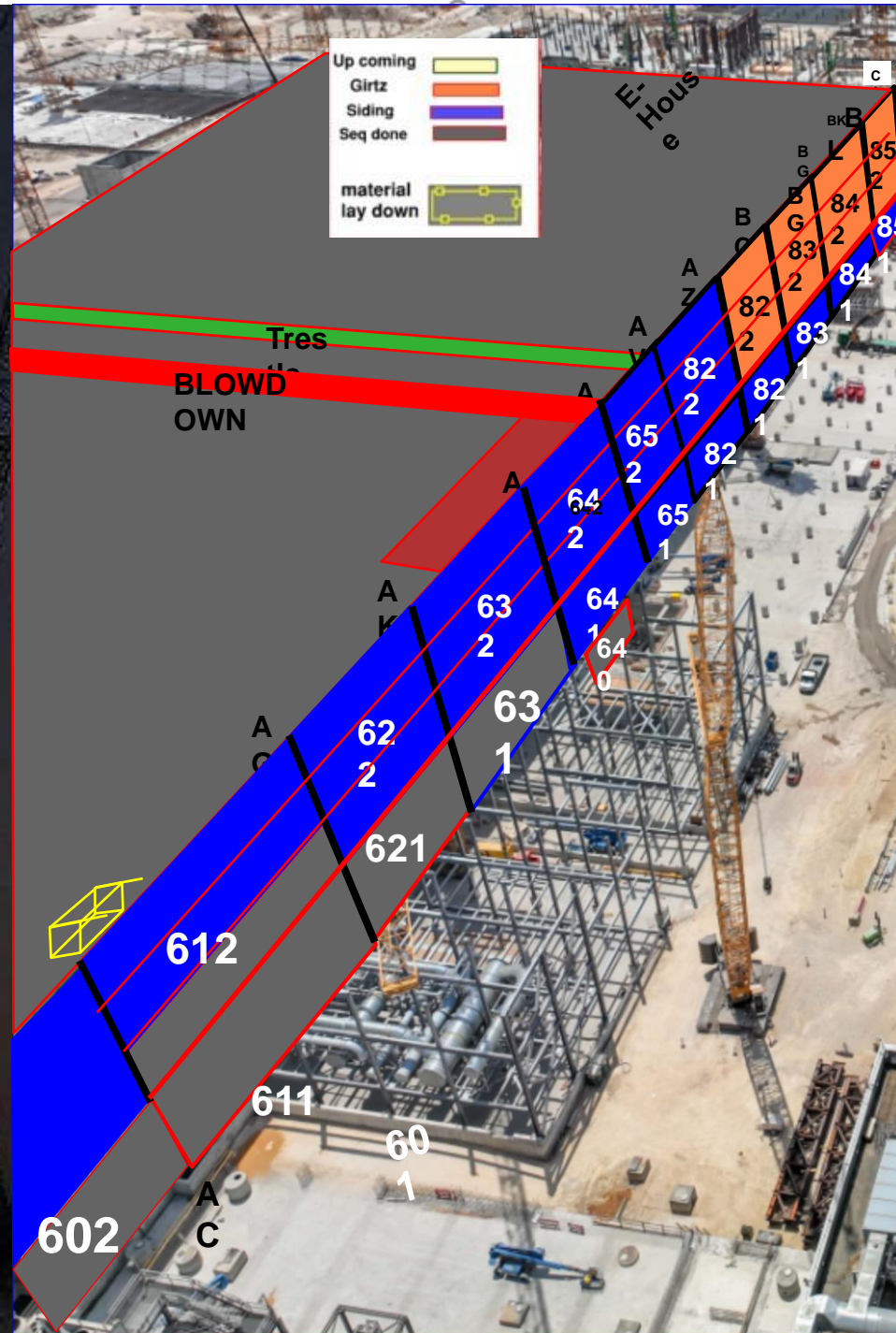
SEQ 251-252 5RA decking
SEQ 254 Ongoing

SEQ 260-261 Decking
SEQ 263 Steel erection





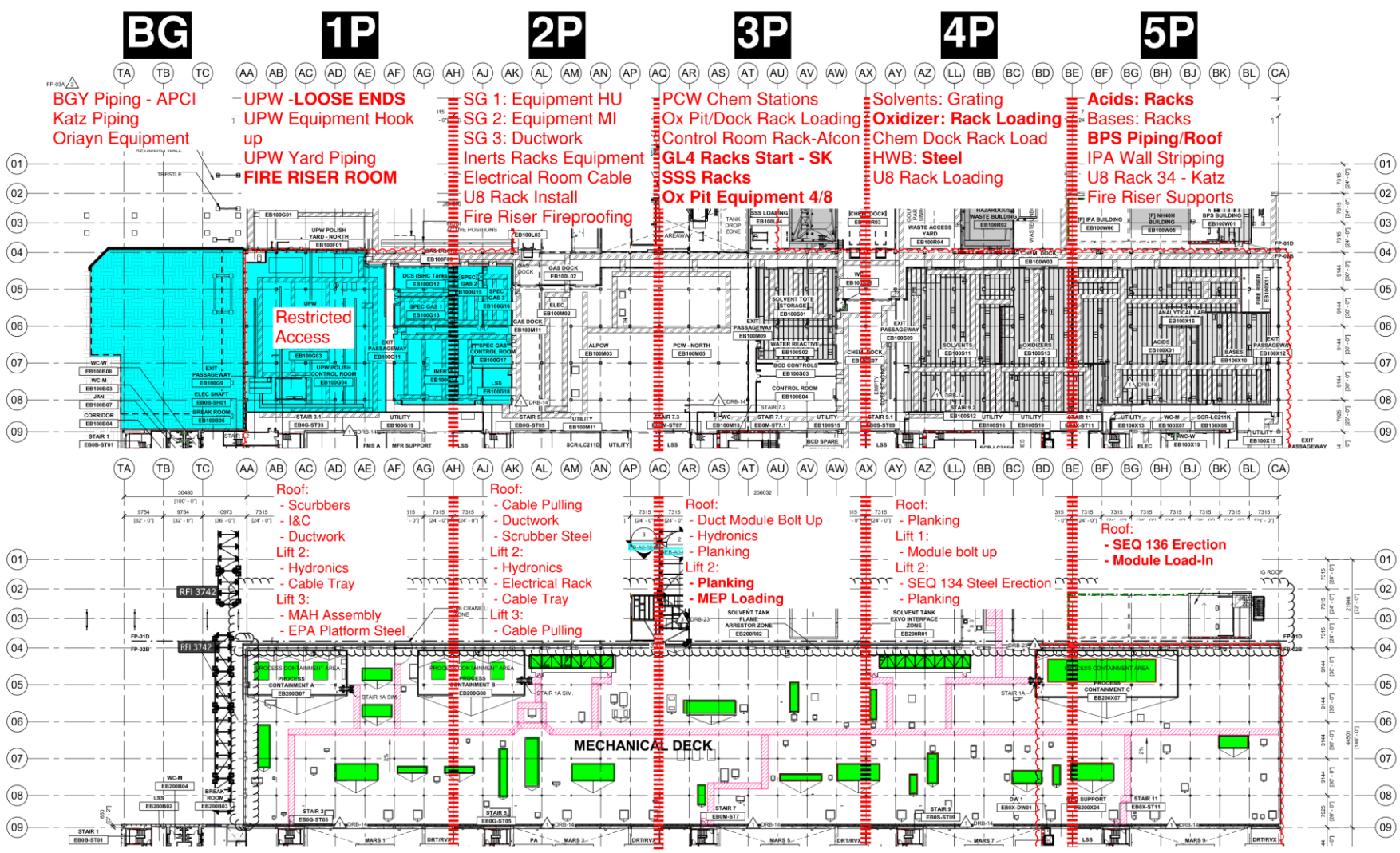




PSSS.1

Utility Level
1YA

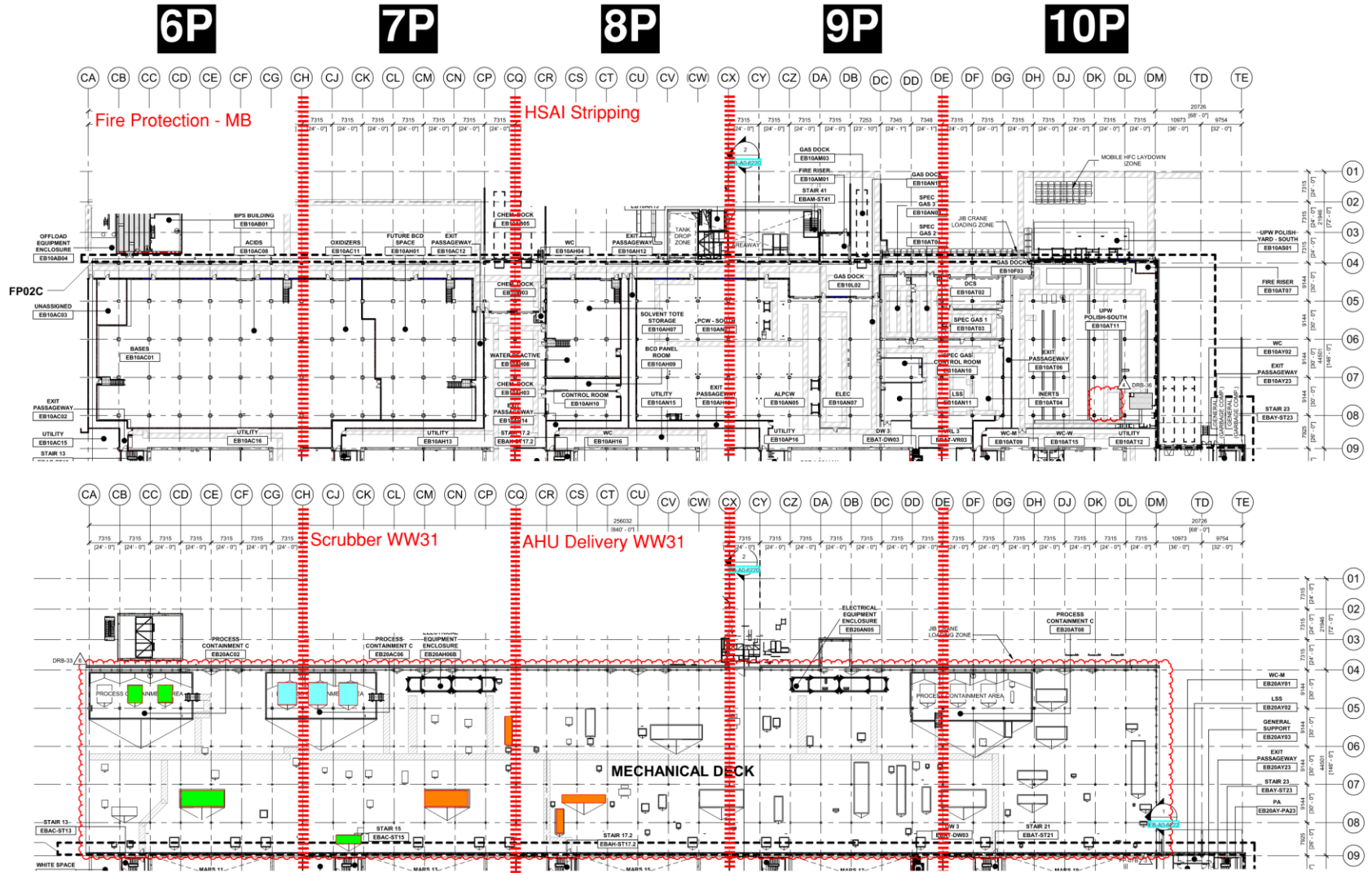
PSSS Roof
2SA



PSSS.2

Utility Level 1YA

PSSS Roof 2SA





WJG 01J, 02J LIFT 2 & 3



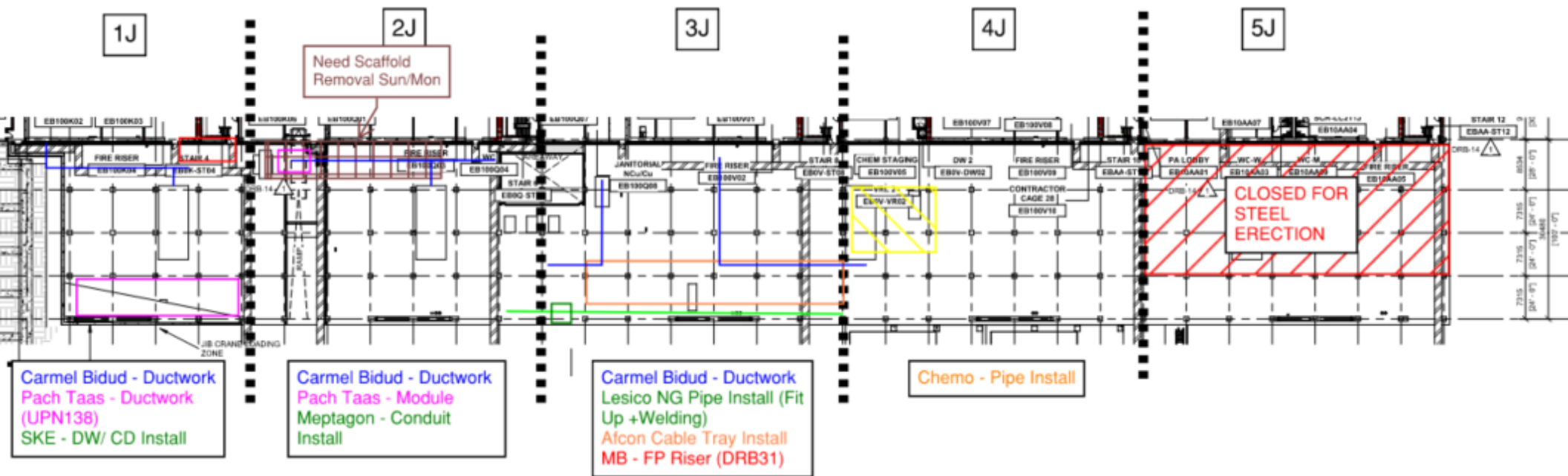


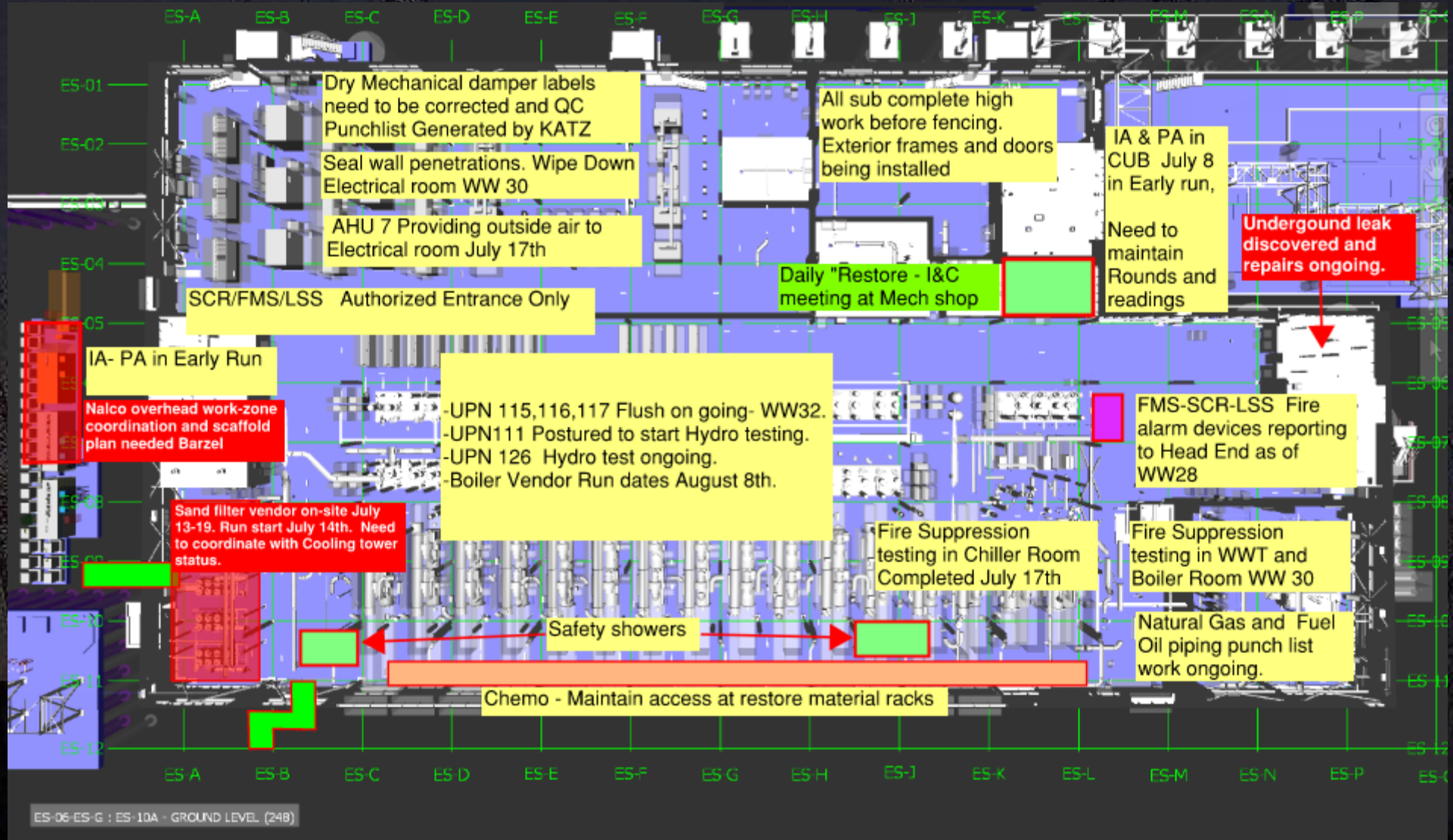
WJG 03J, 04J, 05J LIFT 2 & 3

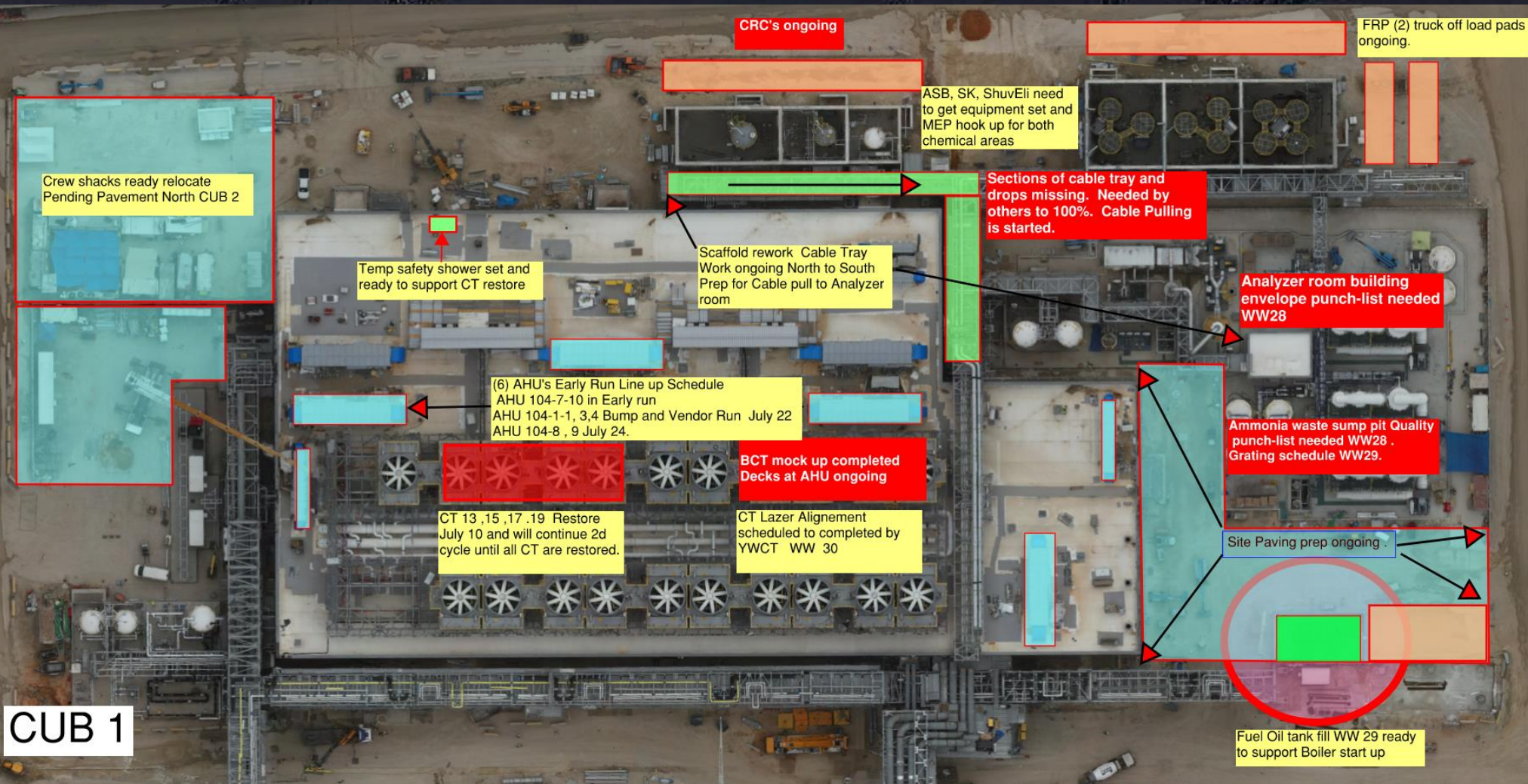


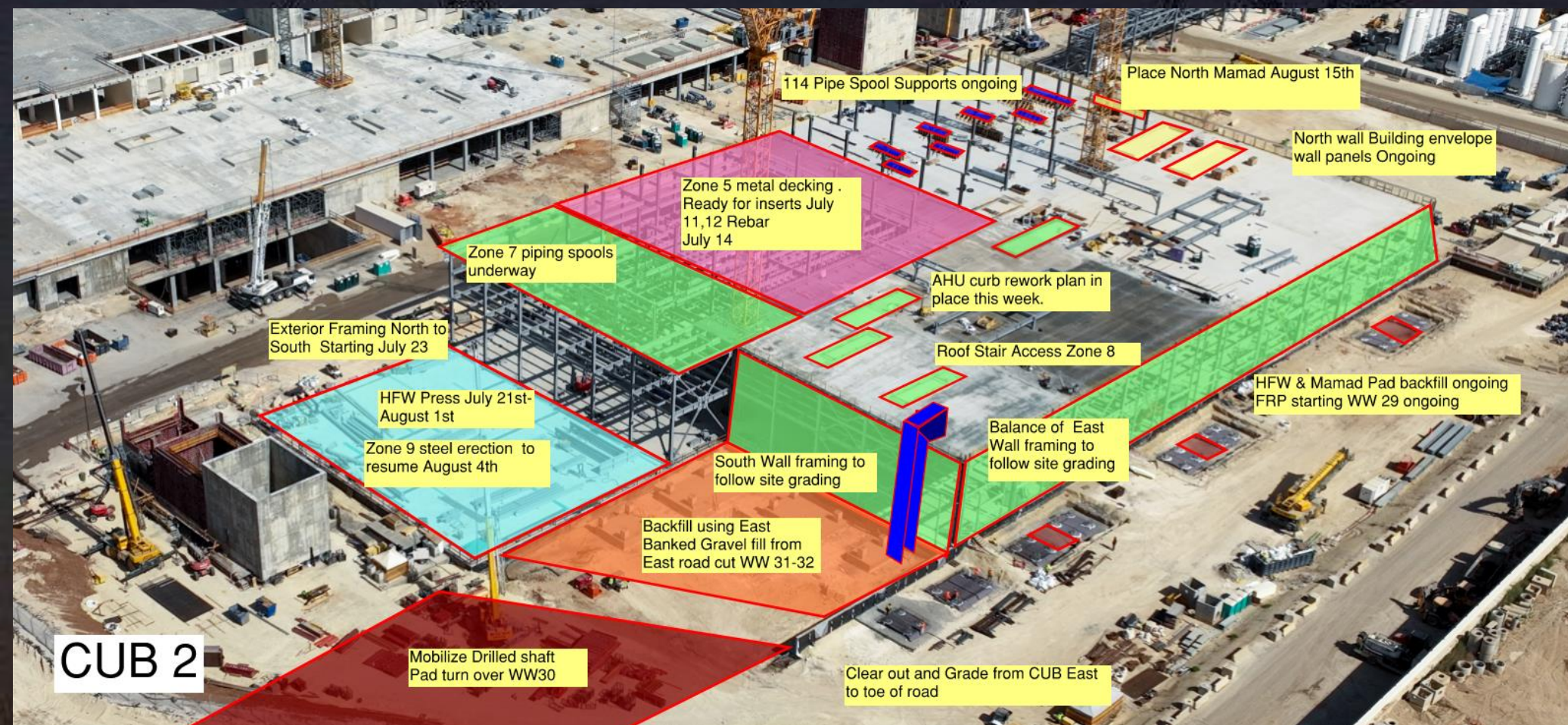


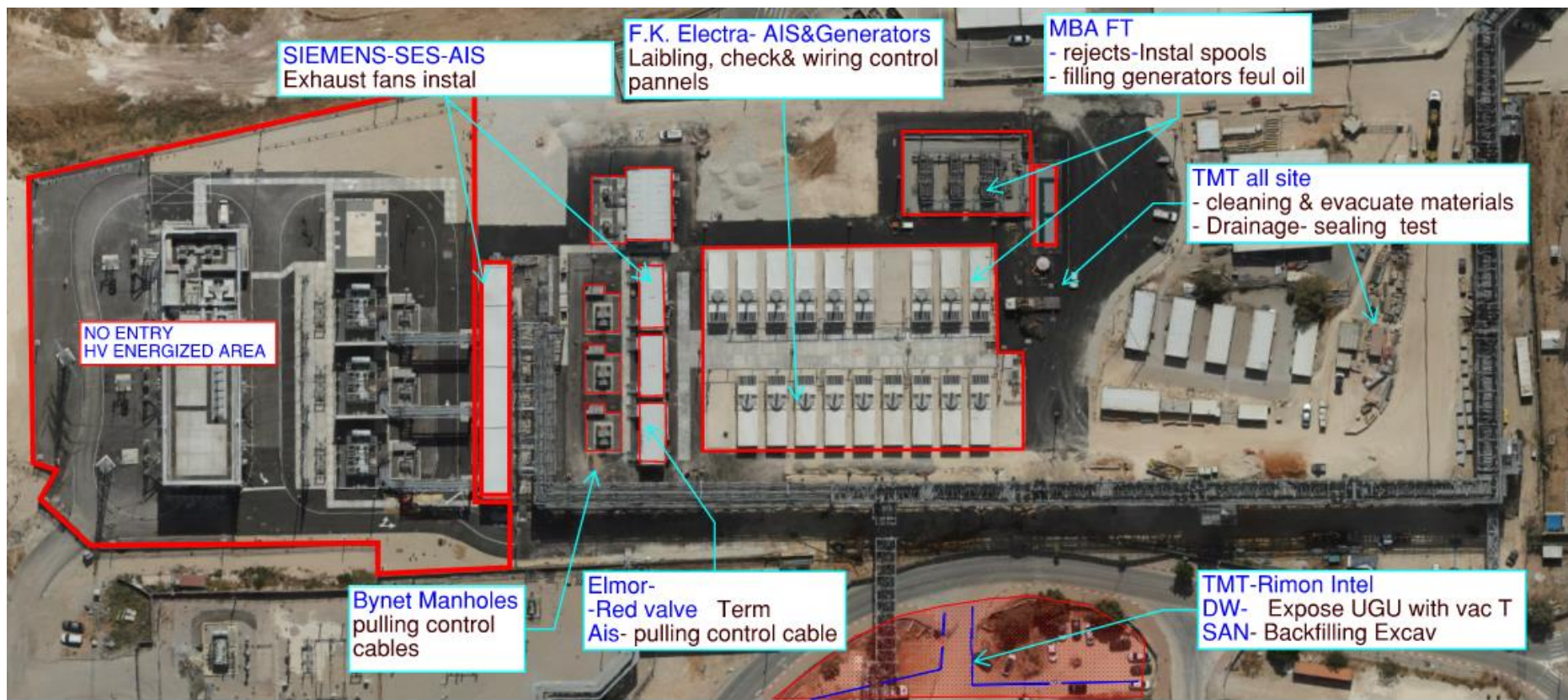
WJG UTILITY LEVEL BUILD OUT











Trench lids will be instal 5/9/24
complete your sow before.

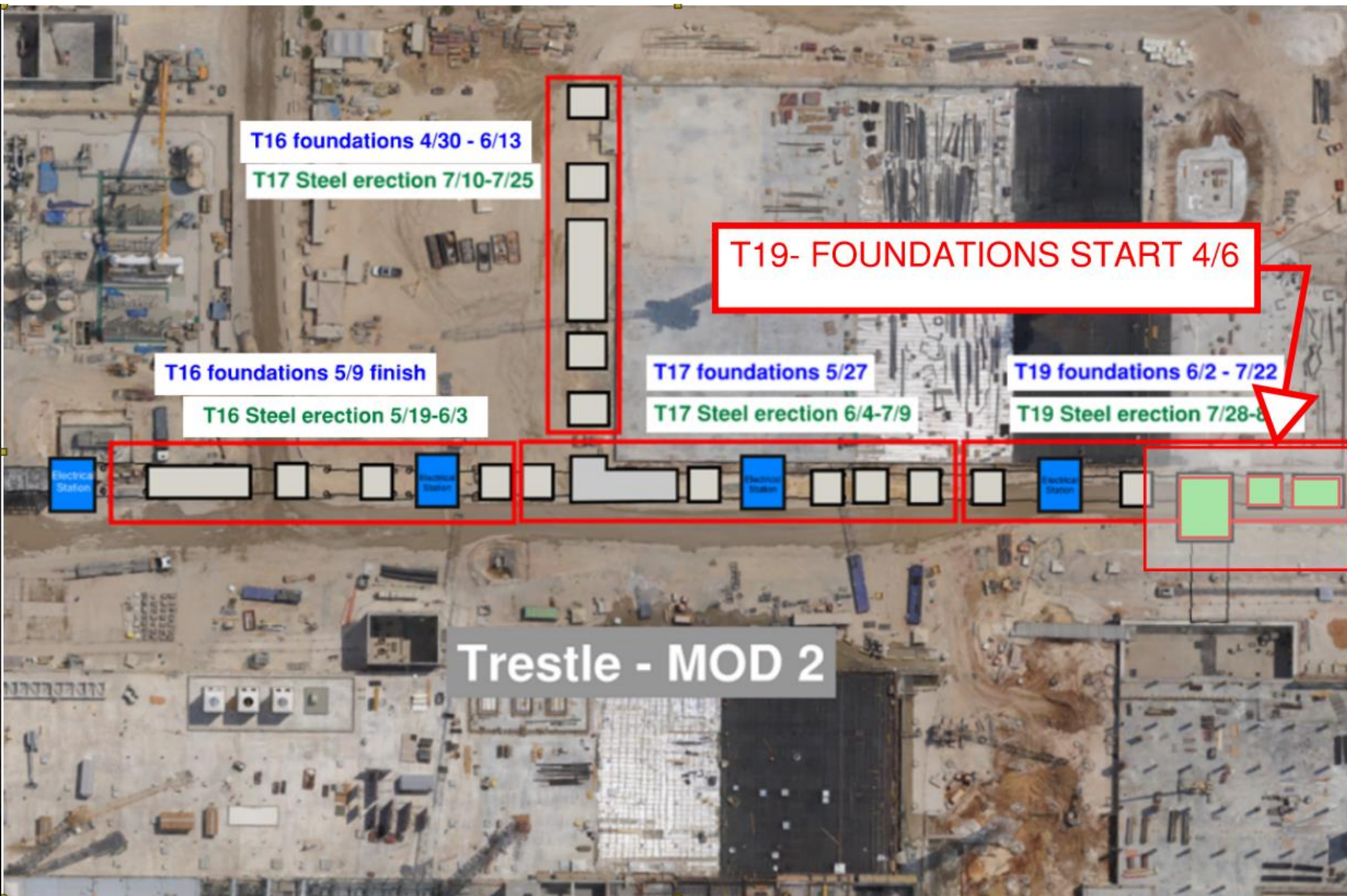
crane
locati
on

HRA AREA

Planning machinery-
truck, boom lift, fork
... etc work- requires
coordination in
advance Hcc Sup &
meet the requirement
before starting work
to insure not damage
facilities

For all subs
for compeleting SOW to submit microshedule till
25.07.24 for each sow , including disconnect &
evacuate trailers & material & must comply with
P6 SCHEDULE 100%
after NEY area turned to intel need sipp all NEY

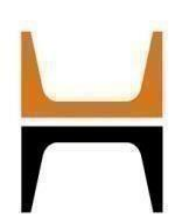




BSGS







HOFFMAN CONSTRUCTION COMPANY



HOFFMAN
Sparrow  

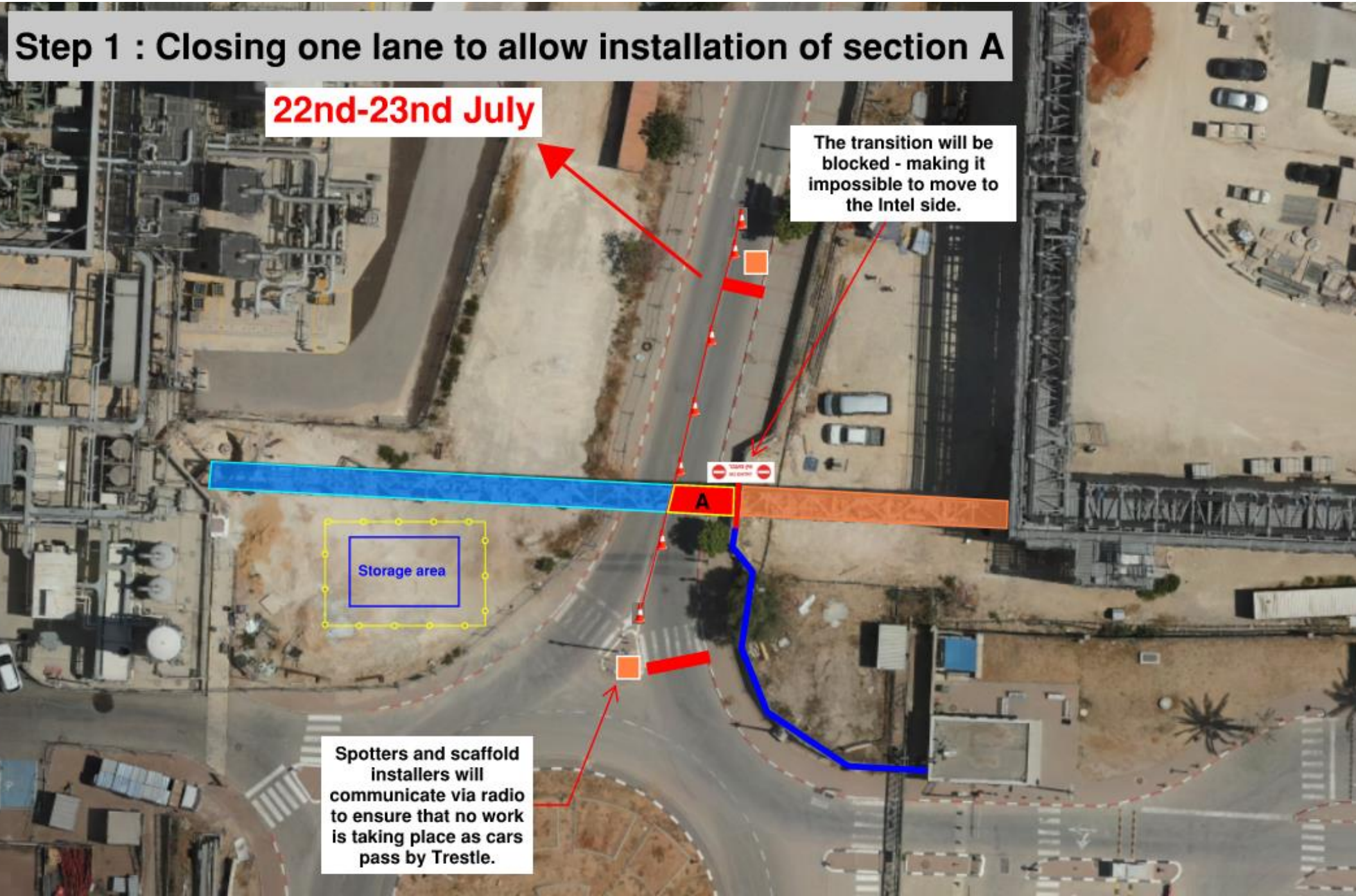
Step 1 : Closing one lane to allow installation of section A

22nd-23rd July

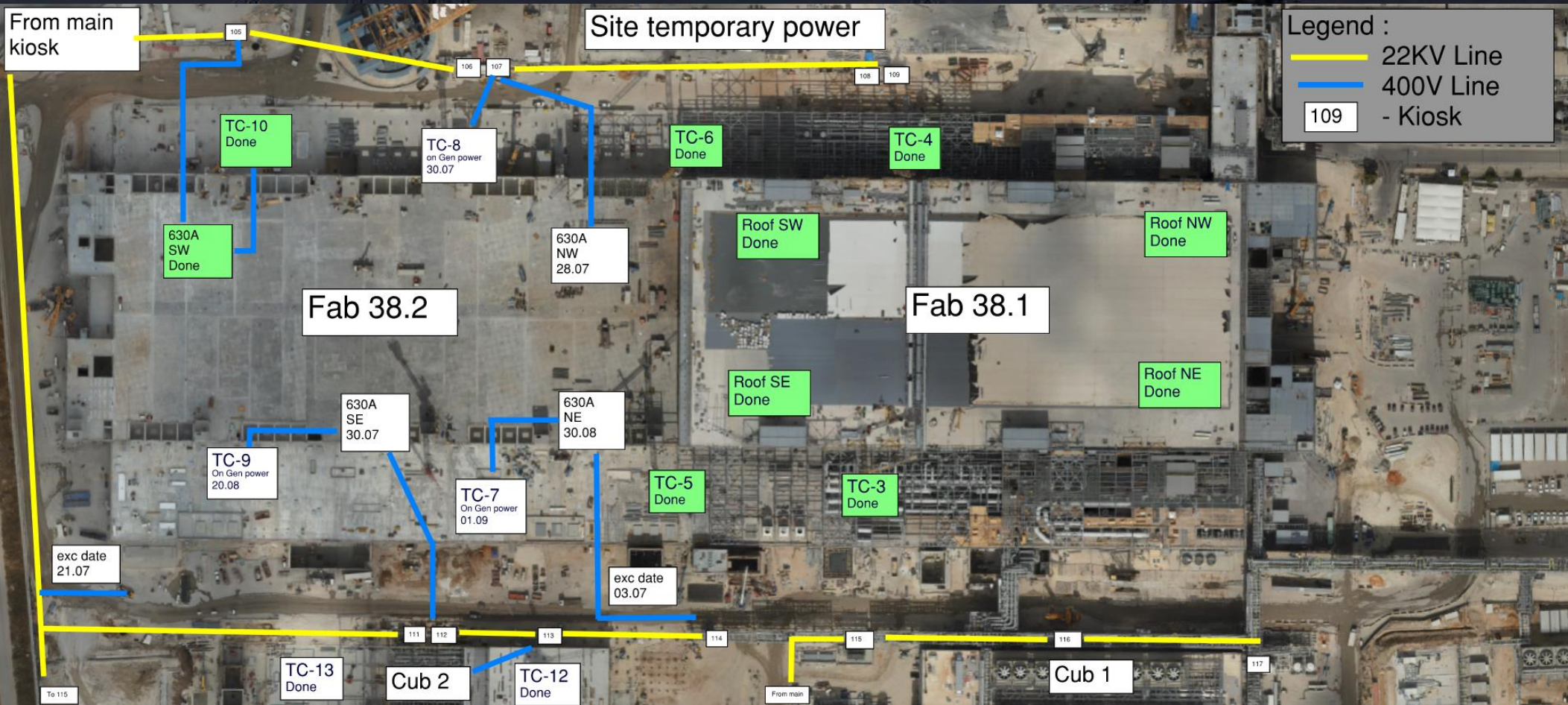
The transition will be blocked - making it impossible to move to the Intel side.

Storage area

Spotters and scaffold installers will communicate via radio to ensure that no work is taking place as cars pass by Trestle.



Daily Coordination Meeting



Daily Coordination Meeting

Site Logistics
North Gate B

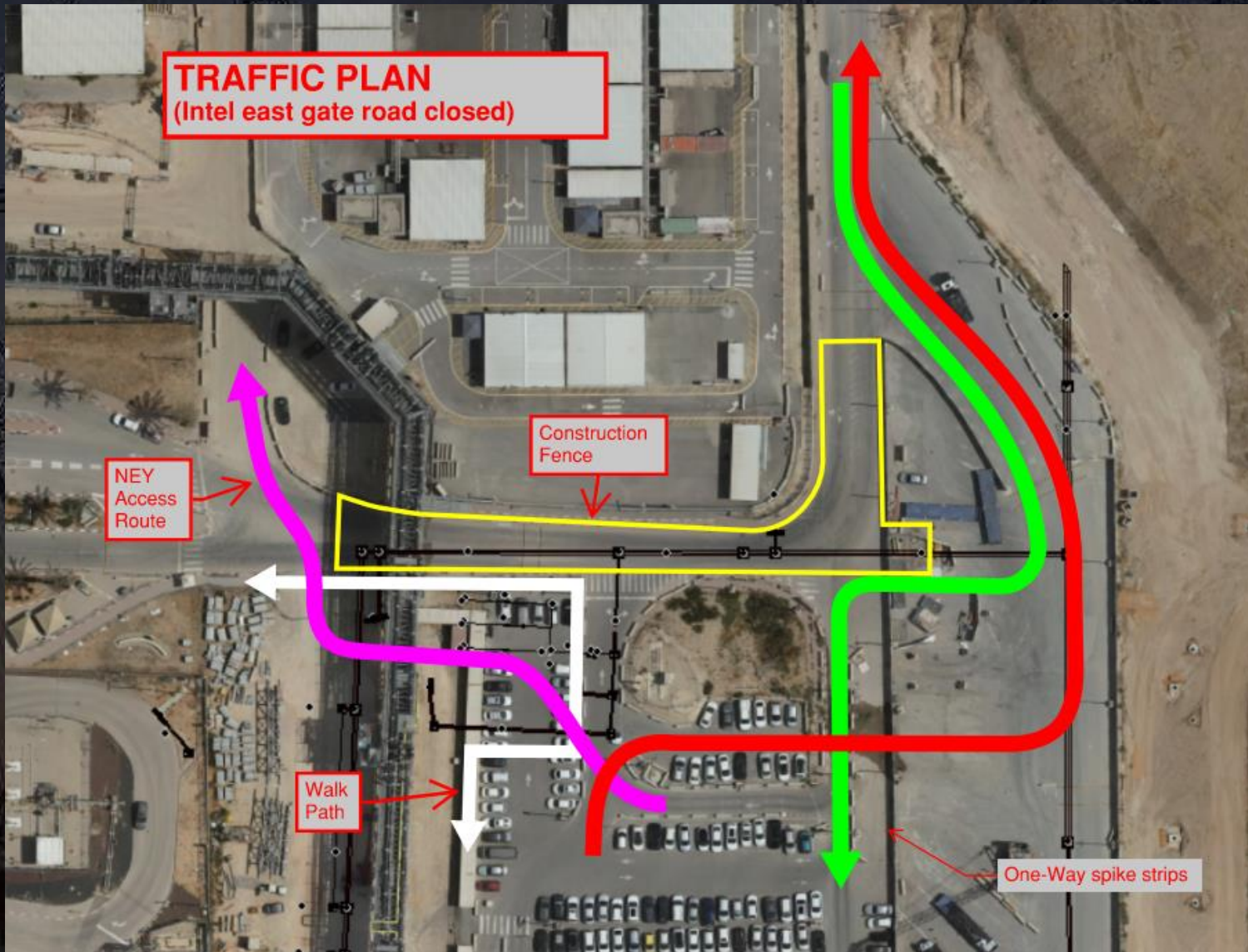




Daily Coordination Meeting

Site Logistics

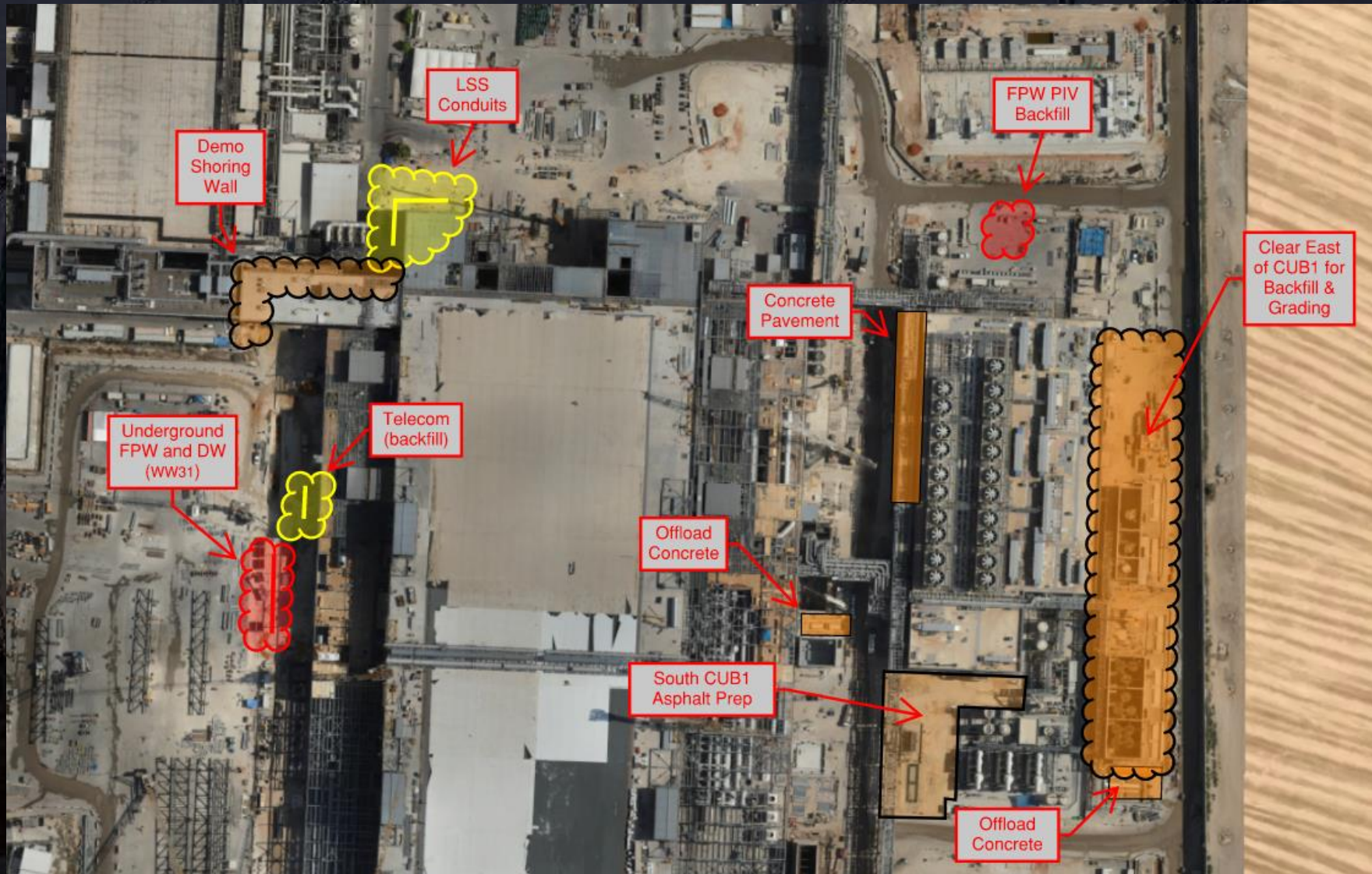
Traffic Plan



Daily Coordination Meeting

Site Logistics

North



Daily Coordination Meeting

Site Logistics

South





HOFFMAN CONSTRUCTION COMPANY



Daily Coordination Meeting

Site Logistics

SW Parking

Sanitary



Daily Coordination Meeting

WATER BOTTLE FILLING & PERSONNEL COOLING STATIONS

BF (1) AT GIS



Incident Reporting

- All incidents, including near misses, must be reported immediately.
- We are seeing a trend of lack of reporting, or reports coming several hours after an incident occurred.
- Incident reporting is required so that we can properly investigate incidents, ensure that unsafe conditions are not present, and so that we can learn from the incident.
- We believe in learning from everything, part of that is ensuring that we know about incidents, and that we properly analyze those incidents.

Heat Index- July 23rd

	temperature (°F)															
	80	82	84	86	88	90	92	94	96	98	100	102	104	106	108	110
40	80	81	83	85	88	91	94	97	100	105	109	114	119	124	130	136
45	80	82	84	87	89	93	96	100	104	109	114	119	124	130	137	
50	81	83	85	88	91	95	99	103	108	113	118	124	131	137		
55	81	84	86	89	93	97	101	106	112	117	124	130	137			
60	82	84	88	91	95	100	105	110	116	123	129	137				
65	82	85	89	93	98	103	108	114	121	128	136					
70	83	86	90	95	100	105	112	119	126	134						
75	84	88	92	97	103	109	116	124	132							
80	84	89	94	100	106	113	121	129								
85	85	90	96	102	110	117	126	135								
90	86	91	98	105	113	122	131									
95	86	93	100	108	117	127										
100	87	95	103	112	121	132										

Caution
Extreme Caution
Danger
Extreme Danger

Extreme Caution

- Ensuring water and shaded areas available
- Acclimating workers
- Emergency planning and response
- Training workers and supervisors on the signs of heat stress and preventative measures
- Modified work schedules and/or rotating out workers
- Monitoring of workers for signs of heat stress