

# Daily Coordination Meeting



14:00 Sign In

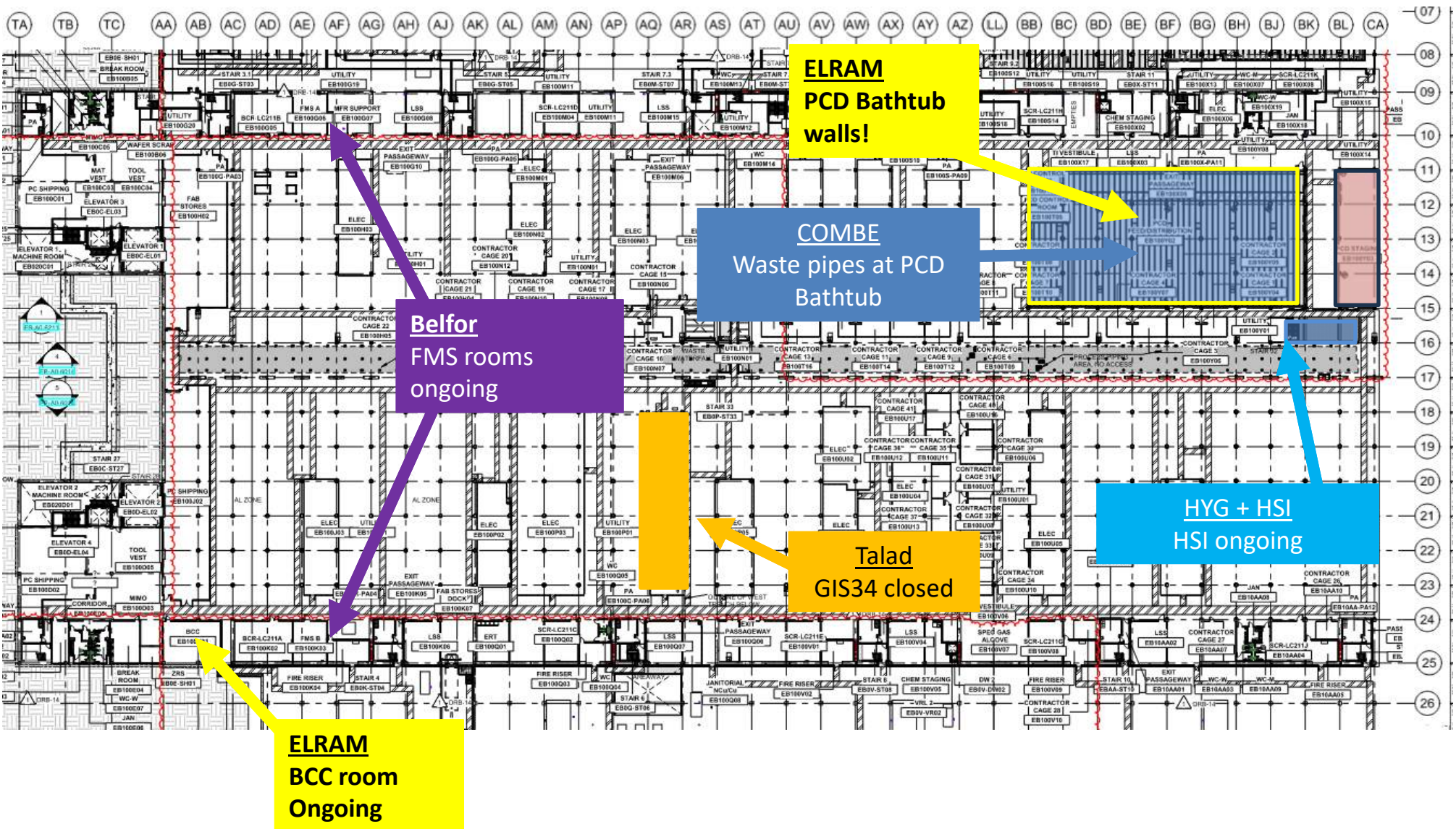
# Daily Coordination Meeting

General Topics:

- Stop work authority



# UTILITY LEVEL MOD1







Malhimim  
8E 10W  
Sprinklers install

MEPTAGON  
9W Bridge strut install  
8E Start 7/30



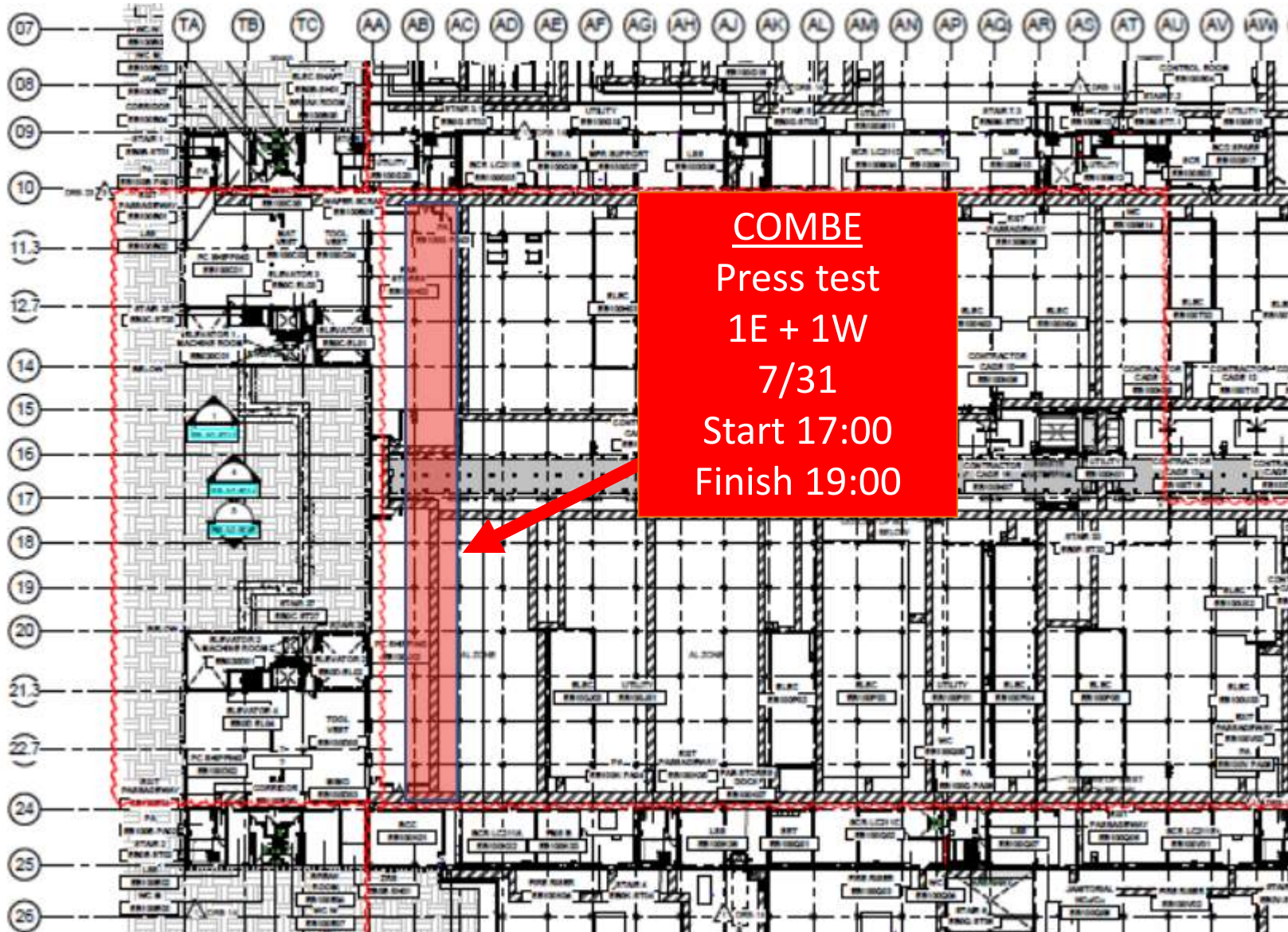
**TRUSS SET  
6E  
Tomorrow  
Start 4:00am**

TRUSS SET  
6E  
Tomorrow  
Start 4:00am





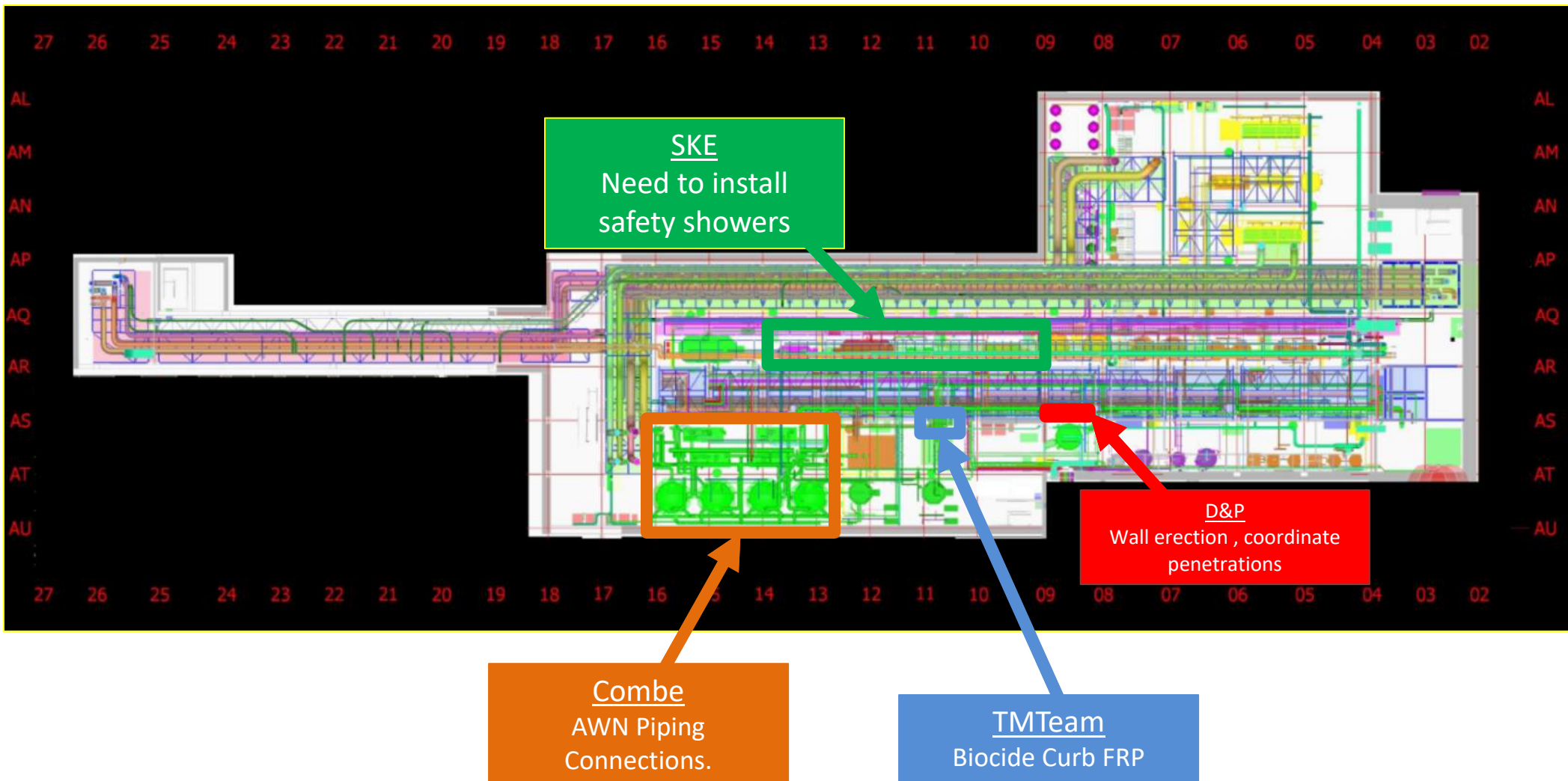
# UTILITY LEVEL MOD1



COMBE  
Press test  
1E + 1W  
7/31  
Start 17:00  
Finish 19:00



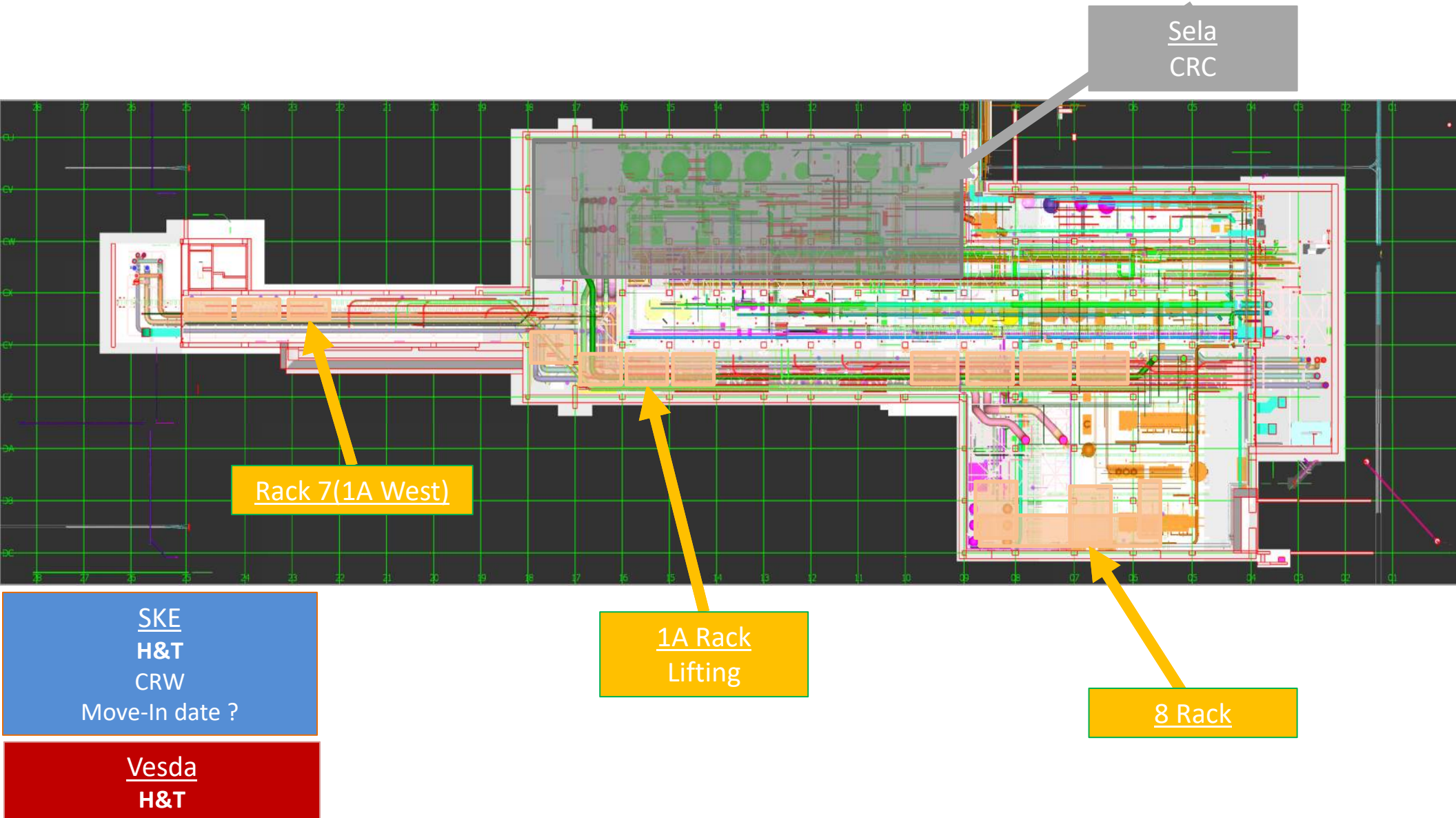
## SUT 38.1 LEVEL



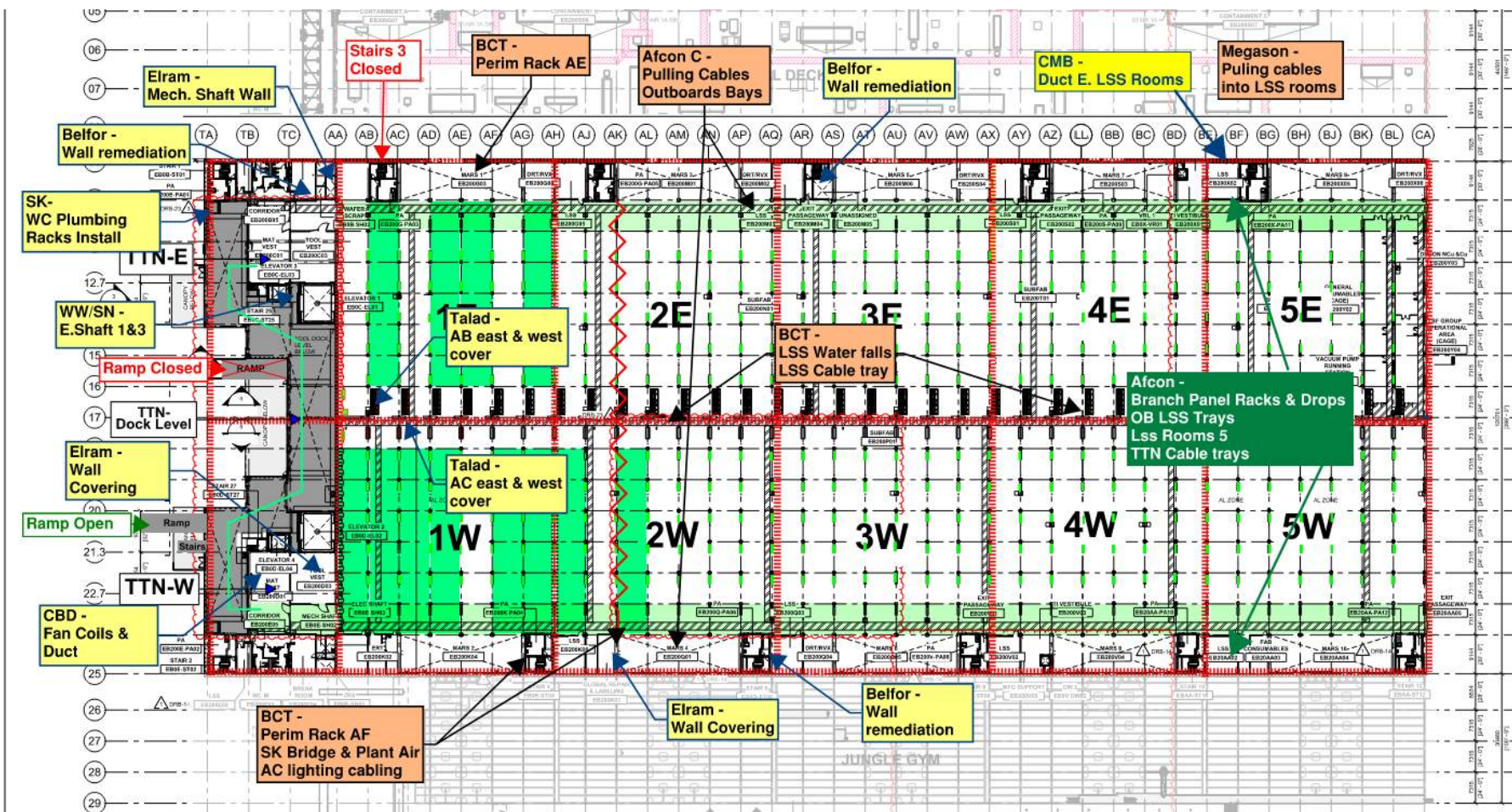




## SUT 38.2 LEVEL

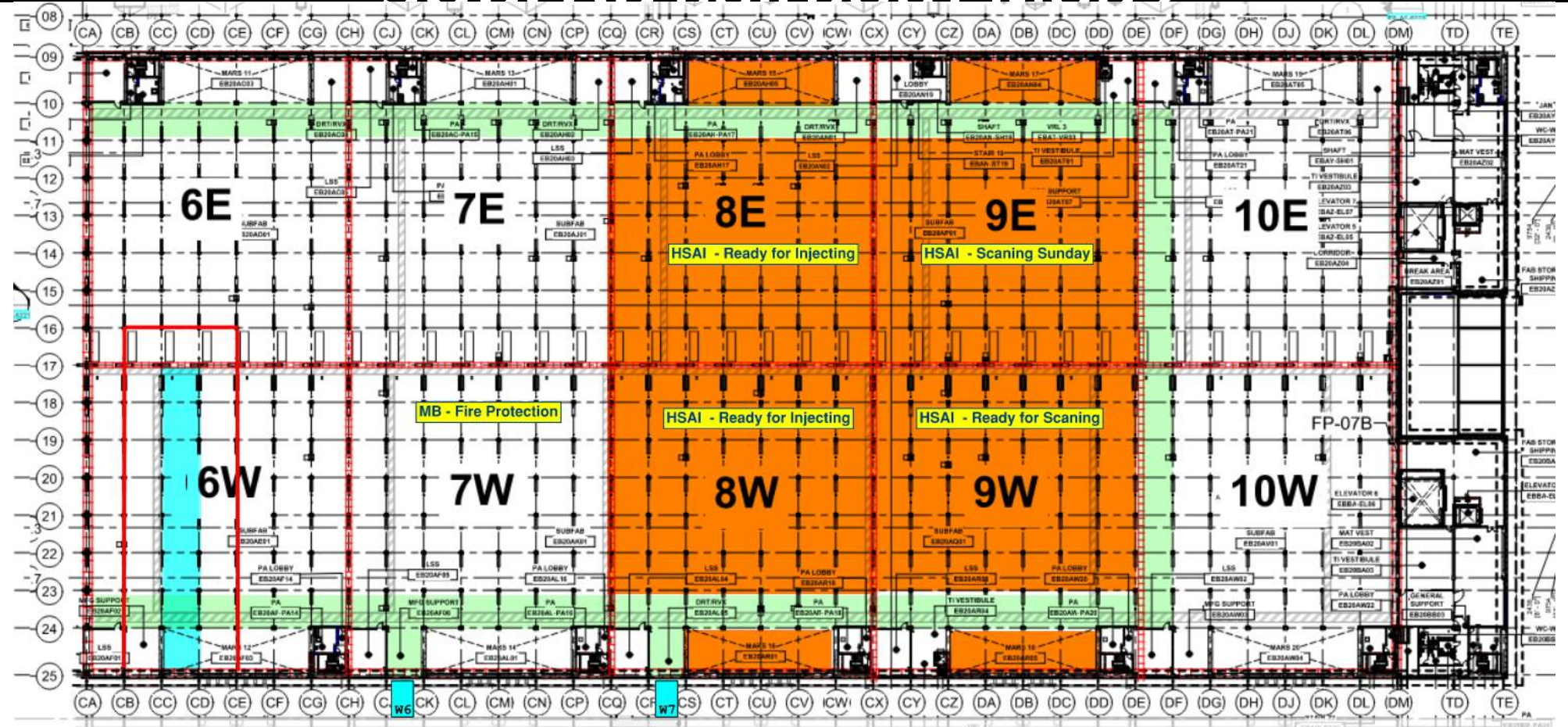








# SUBFAB BUILDOUT MOD 2





## **CRC Beauty Cote Work Plan.**

**Be well prepared to protect CRC**

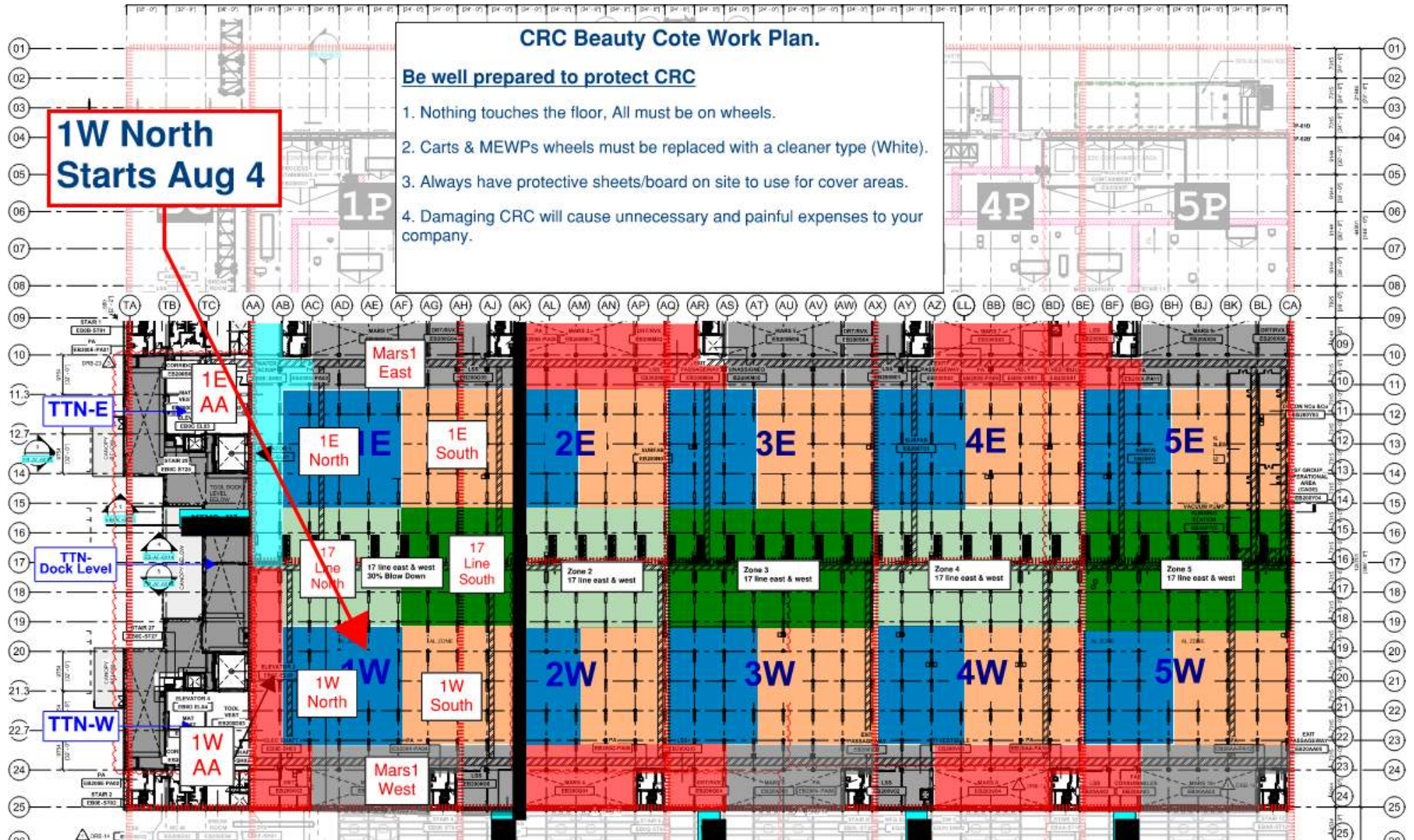
1. Nothing touches the floor, All must be on wheels.
2. Carts & MEWPs wheels must be replaced with a cleaner type (White).
3. Always have protective sheets/board on site to use for cover areas.
4. Damaging CRC will cause unnecessary and painful expenses to your company.

### Be well prepared to protect CRC

1. Nothing touches the floor, All must be on wheels.
2. Carts & MEWPs wheels must be replaced with a cleaner type (White).
3. Always have protective sheets/board on site to use for cover areas.
4. Damaging CRC will cause unnecessary and painful expenses to your company.

- ### Be well prepared to protect CRC
1. Nothing touches the floor, All must be on wheels.
  2. Carts & MEWPs wheels must be replaced with a cleaner type (White).
  3. Always have protective sheets/board on site to use for cover areas.
  4. Damaging CRC will cause unnecessary and painful expenses to your company.

## 1W North Starts Aug 4







- CR level:**
- Alcon** - Cable trays, modules and stickers 1W,2E, 2W
  - MB** - 1E drops, 1W drops, 2E- drops
  - Elram** - 10, 24 columns fix/wrap.  
9,25 line columns wrapping
  - Meptagon** - Zero tolerance pipes 5E-5W, I&C preparations
  - D&P** - Ceiling rods 1E, 5E blades install.
  - Tzur-esh** - 24-25 lines, 4E-4W
  - HYG** - 1W Litho crane plates install, 5W Litho crane steel
  - PT** - Duct prep for test AA-AH east
  - Talad** - Seismic cables 1W.

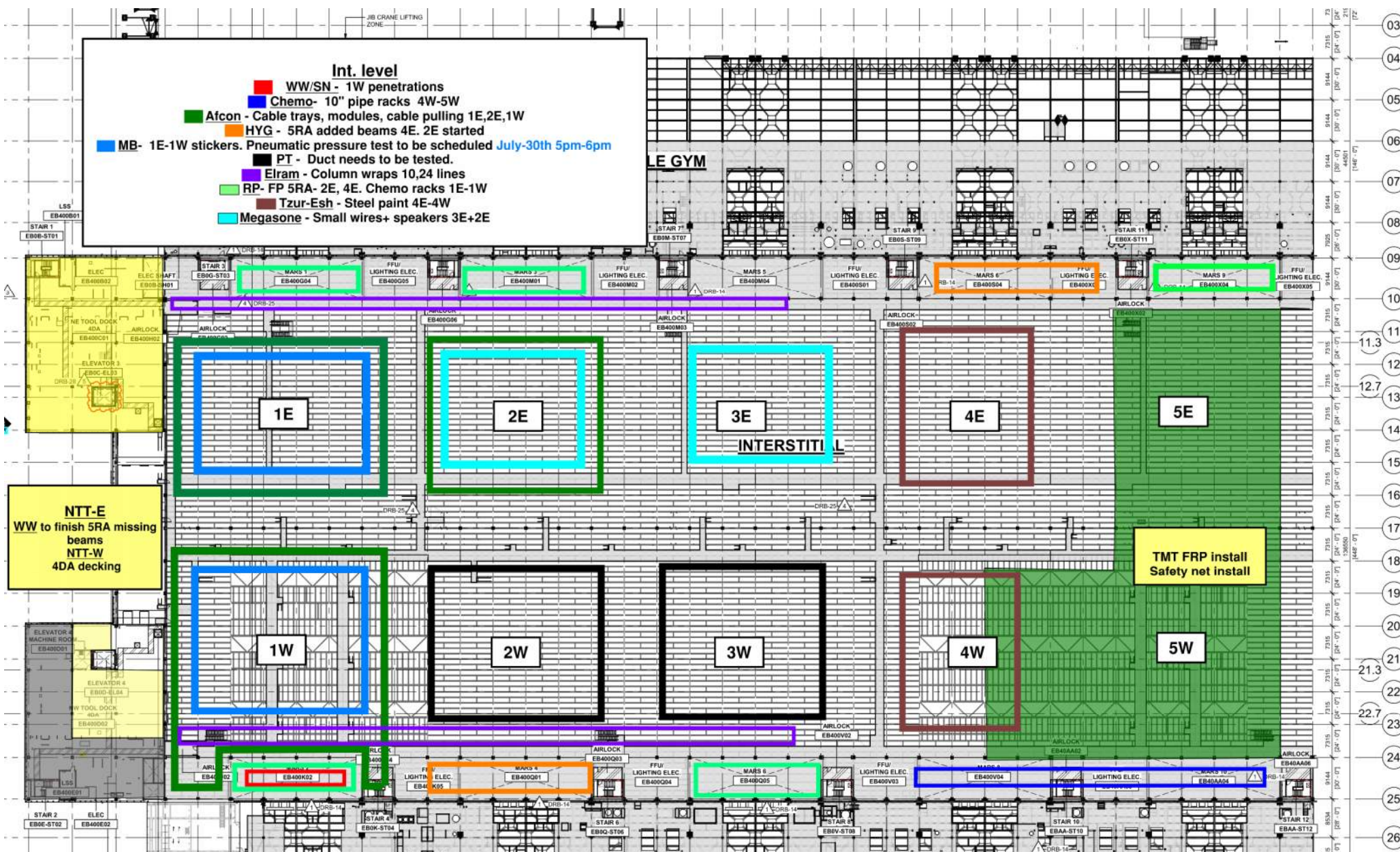
**Belfore** - 1W 25 line done  
1E 9 Line Ongoing

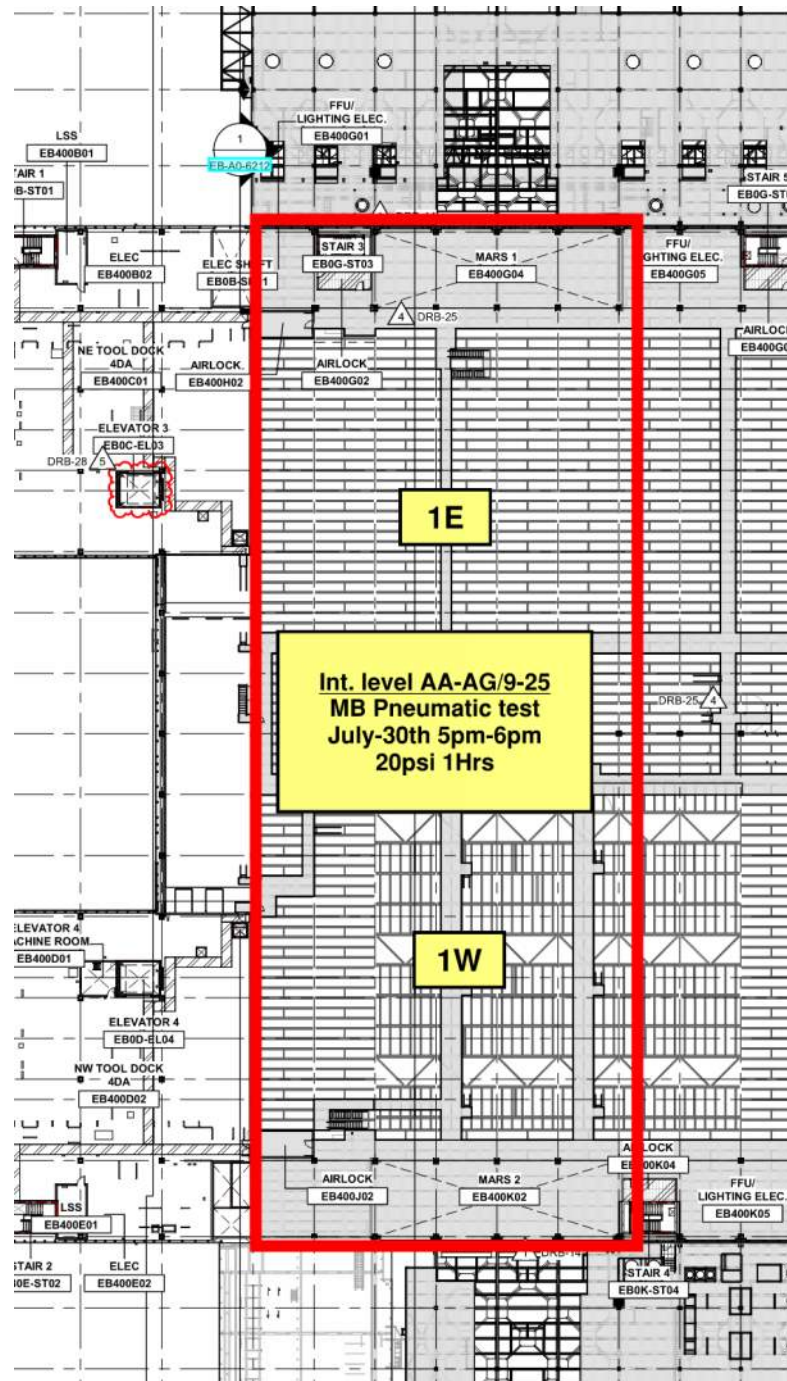
**NTTEW**

**WW/SN** - west side  
welding tabs and  
replacing beams  
**Elram** - East/West floor  
done QA/QC  
**SK** - east side pipes  
needs to be completed  
**HYG** - East to finish steel.  
West receiving material

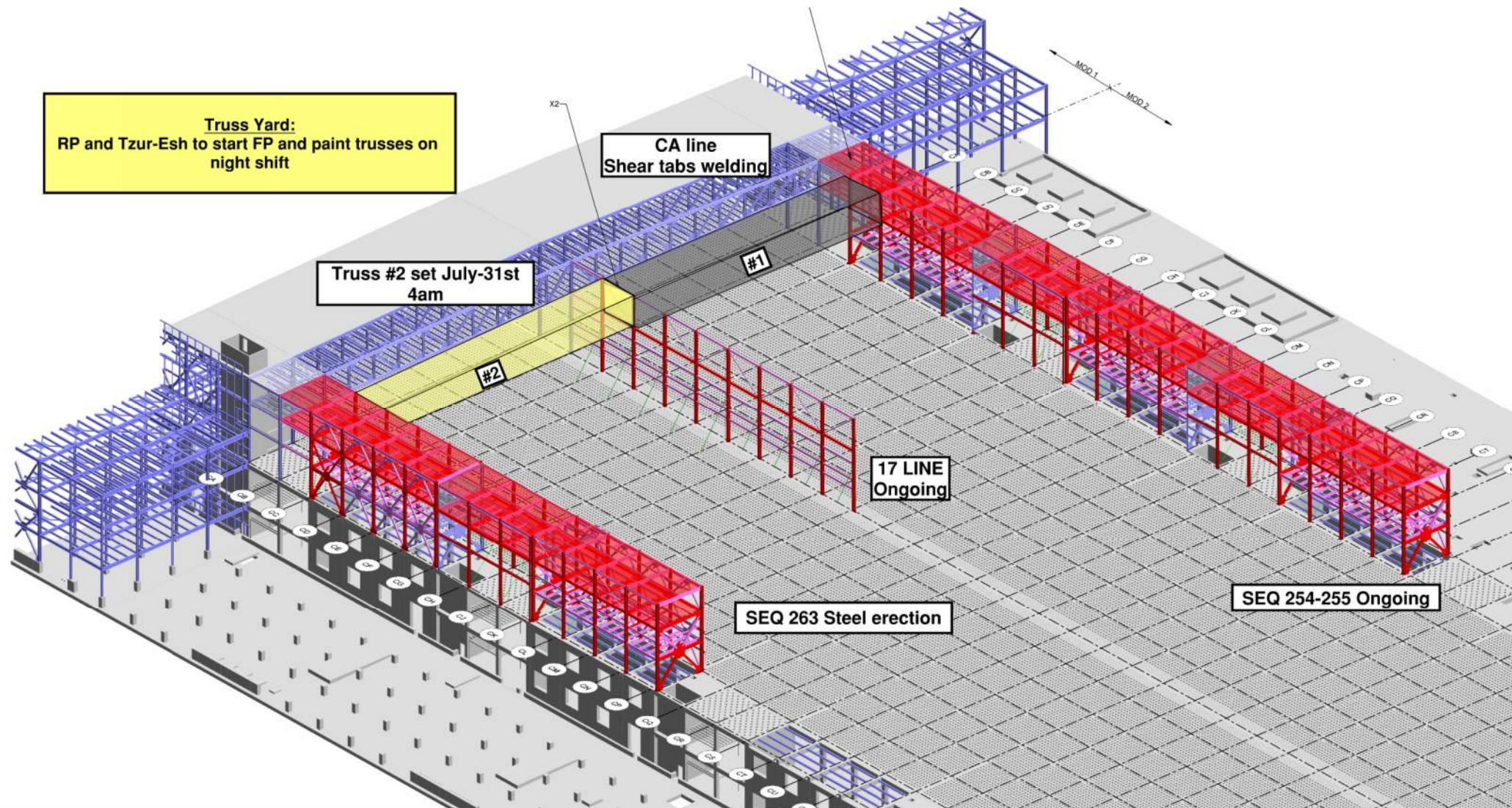
**Link**  
RP - To start FP  
blades



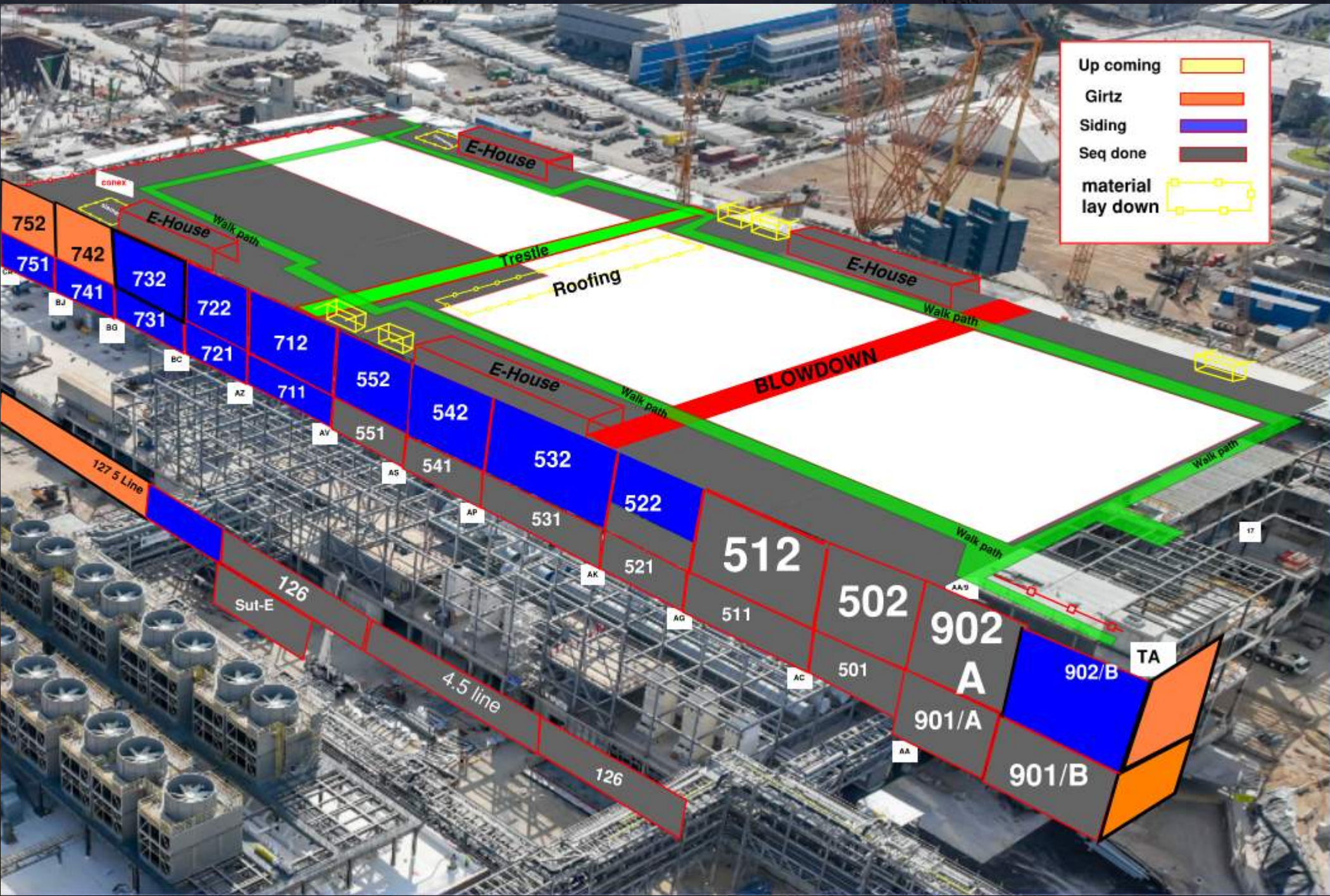




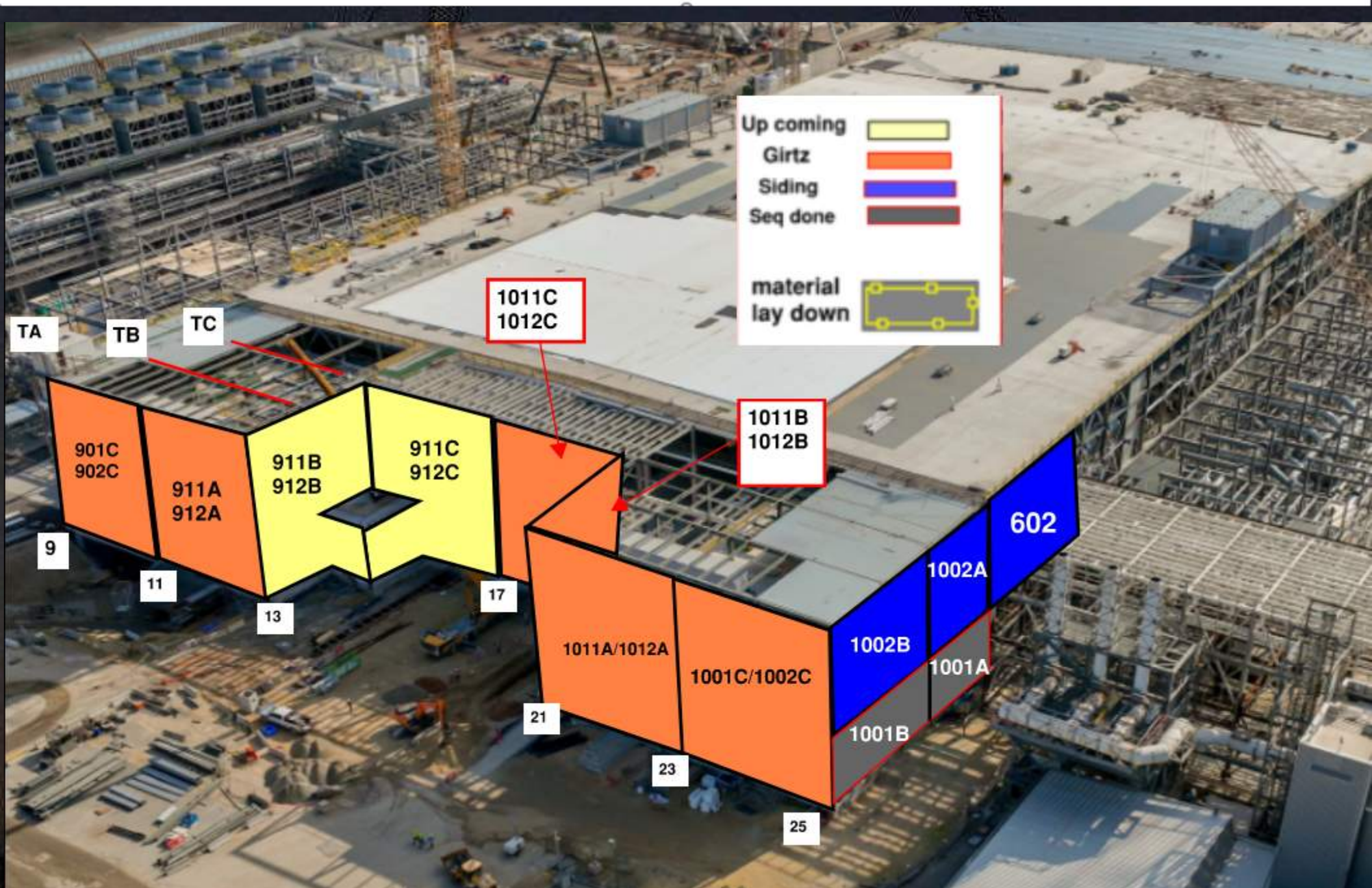




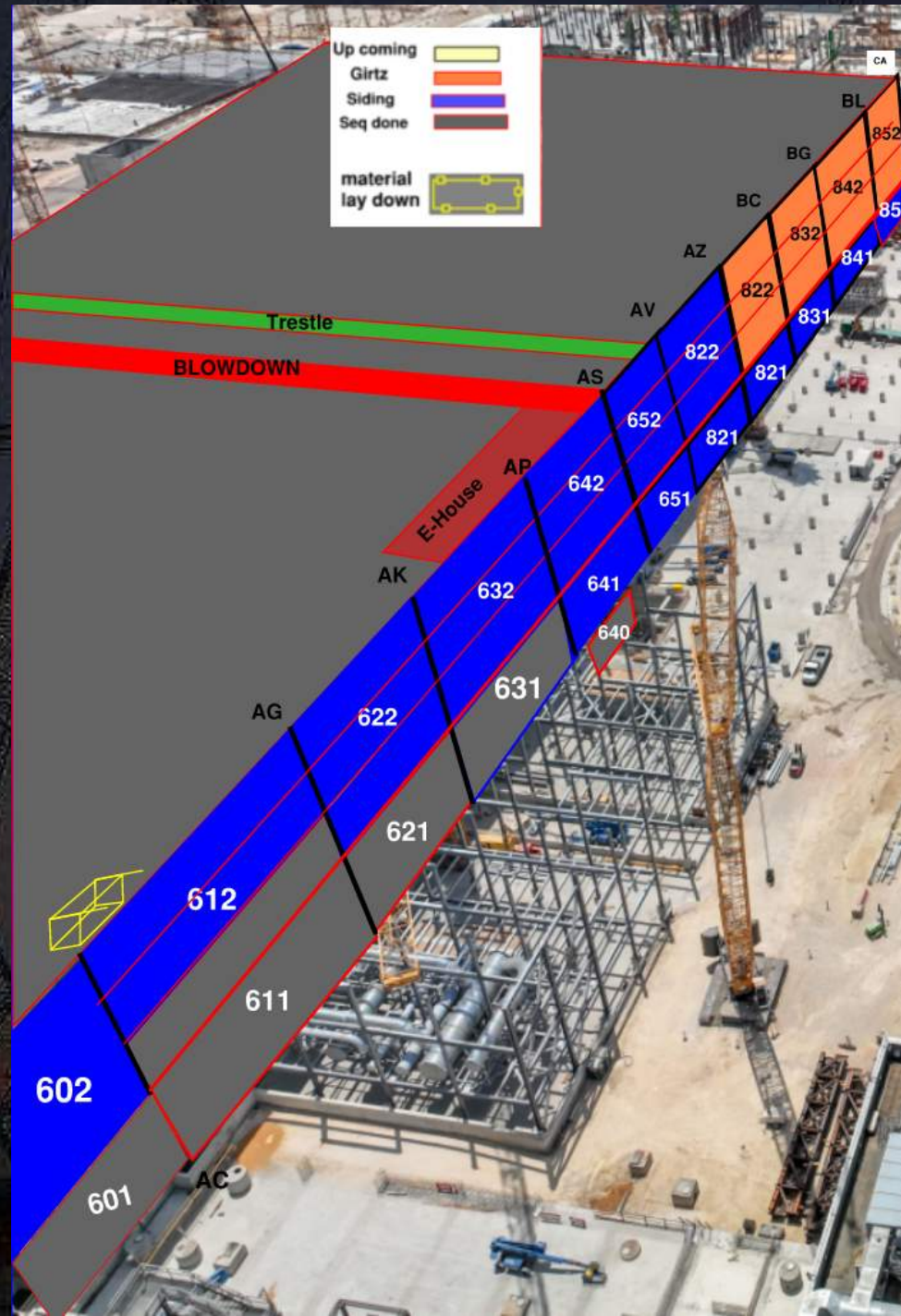










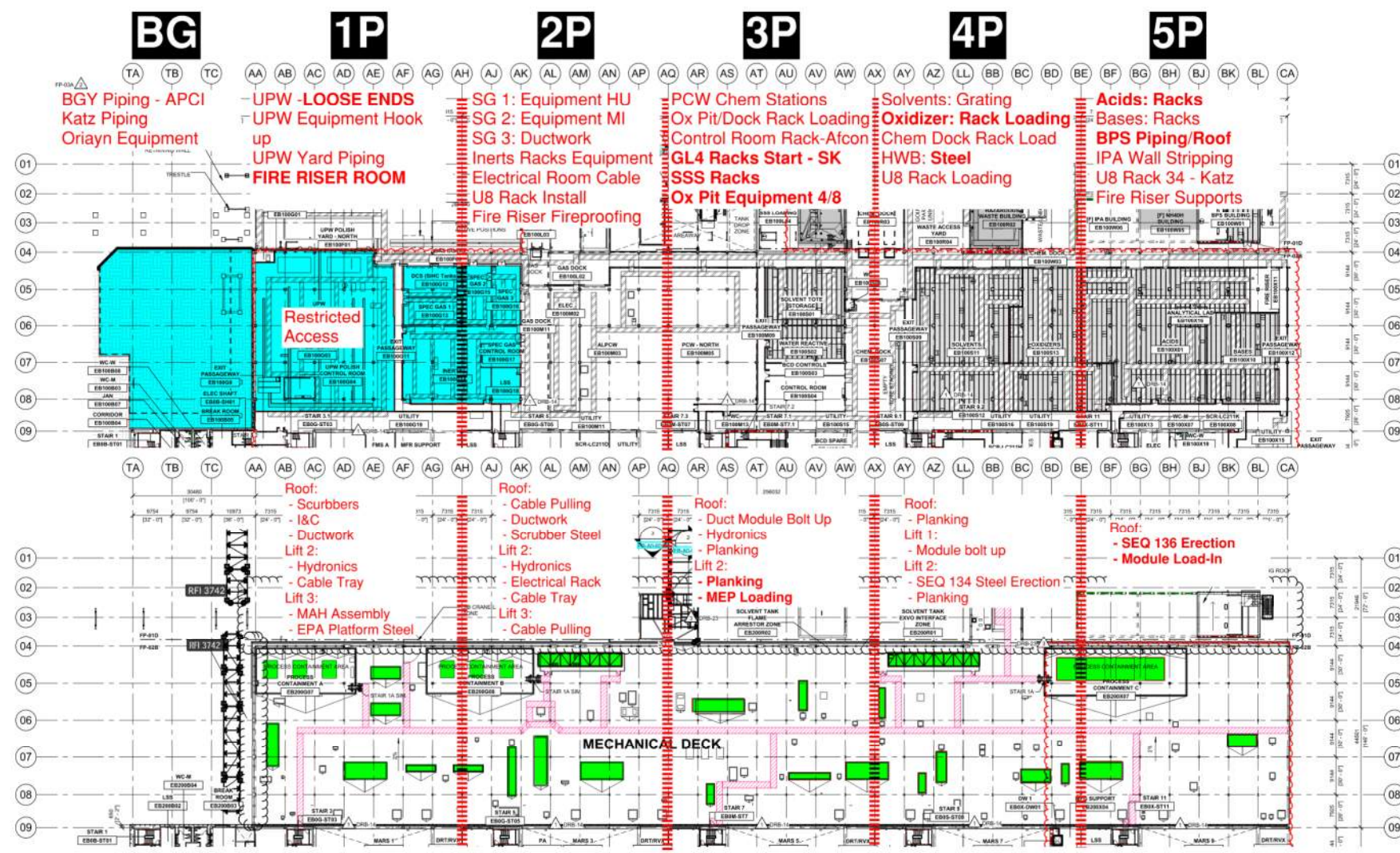




# PSSS.1

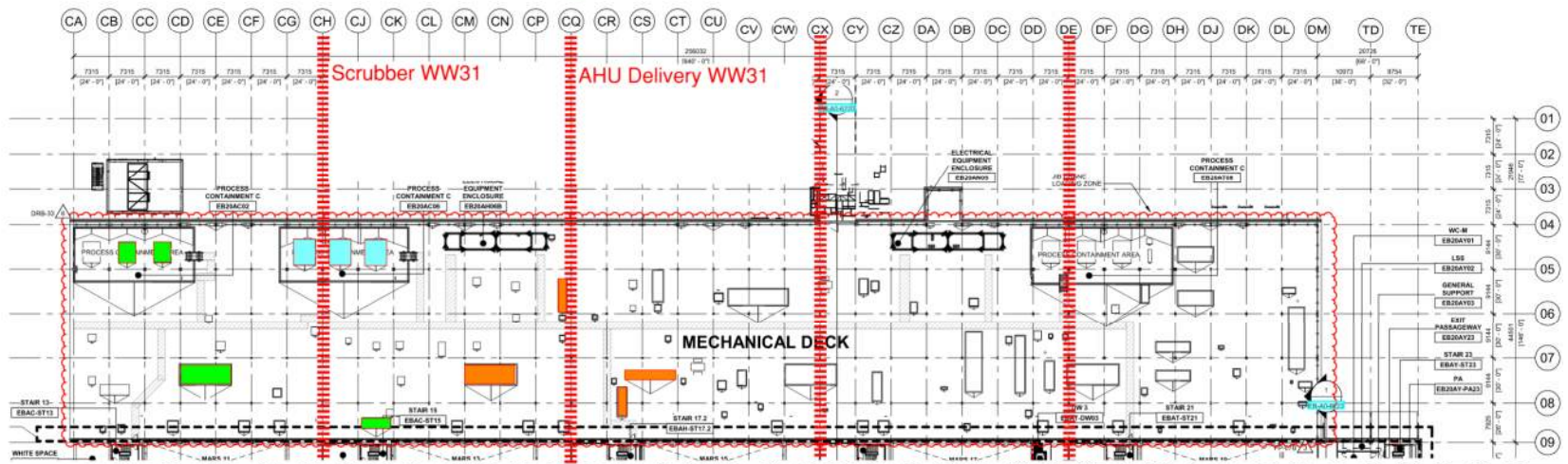
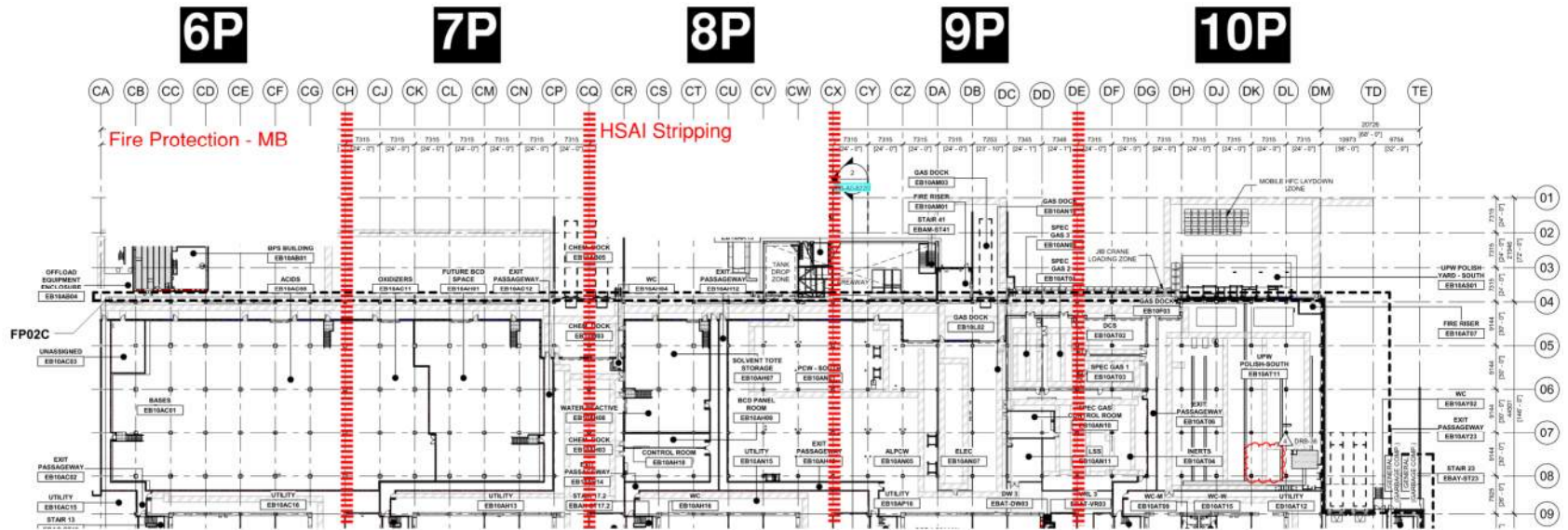
Utility Level  
1YA

PSSS Roof  
2SA





# PSSS.2







## WJG 01J, 02J LIFT 2 & 3





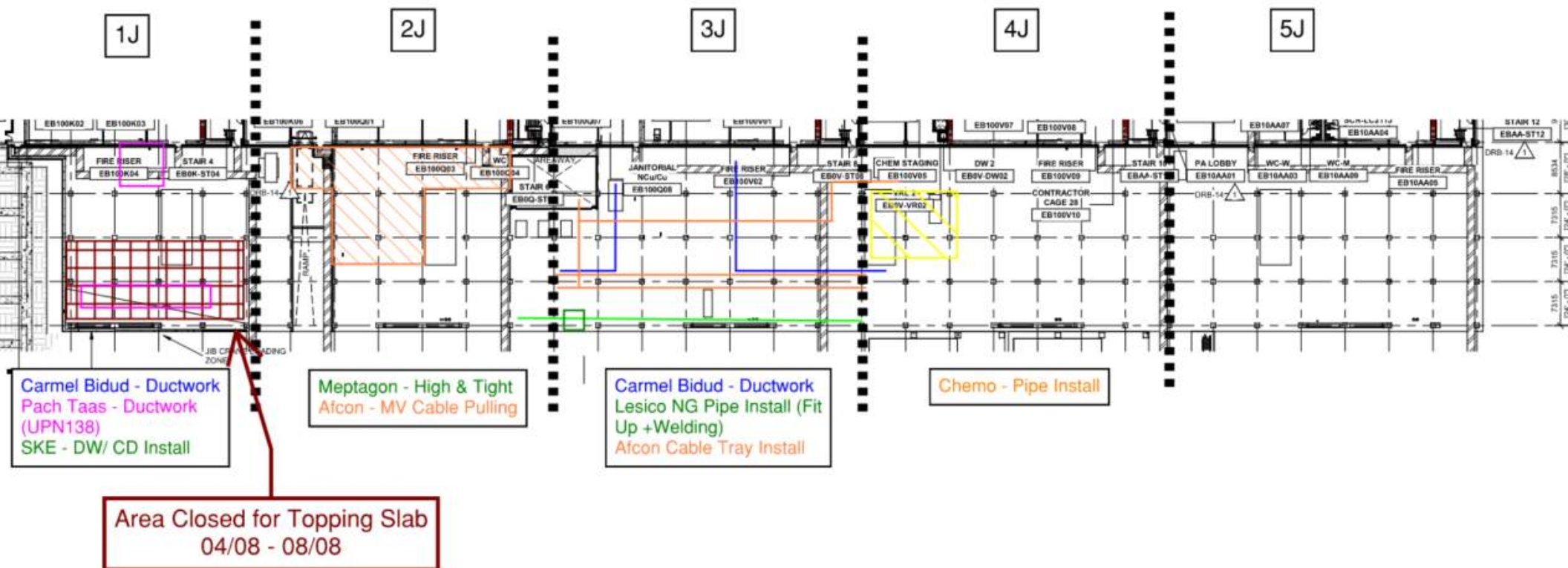
# WJG 03J, 04J, 05J LIFT 2 & 3



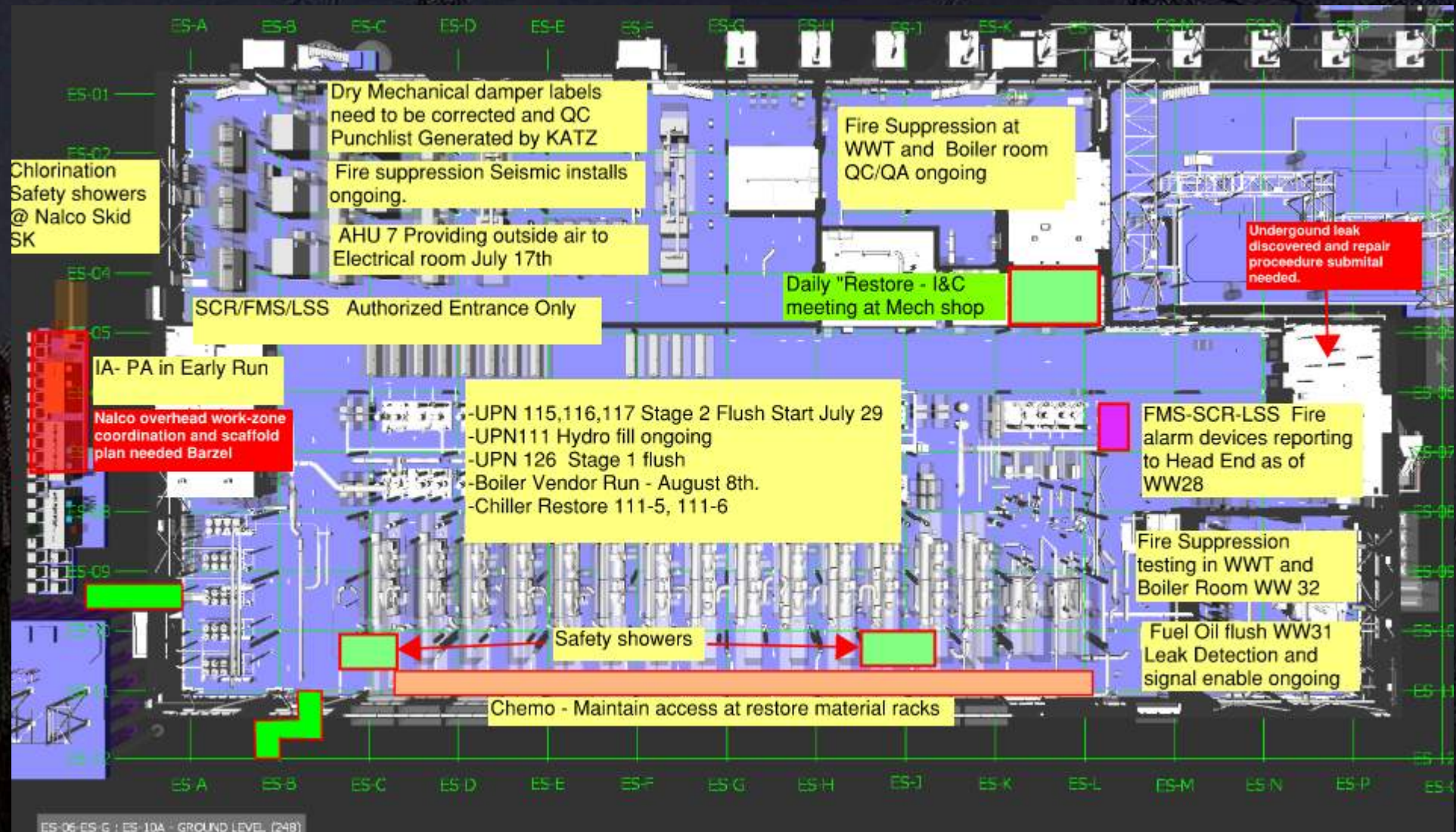




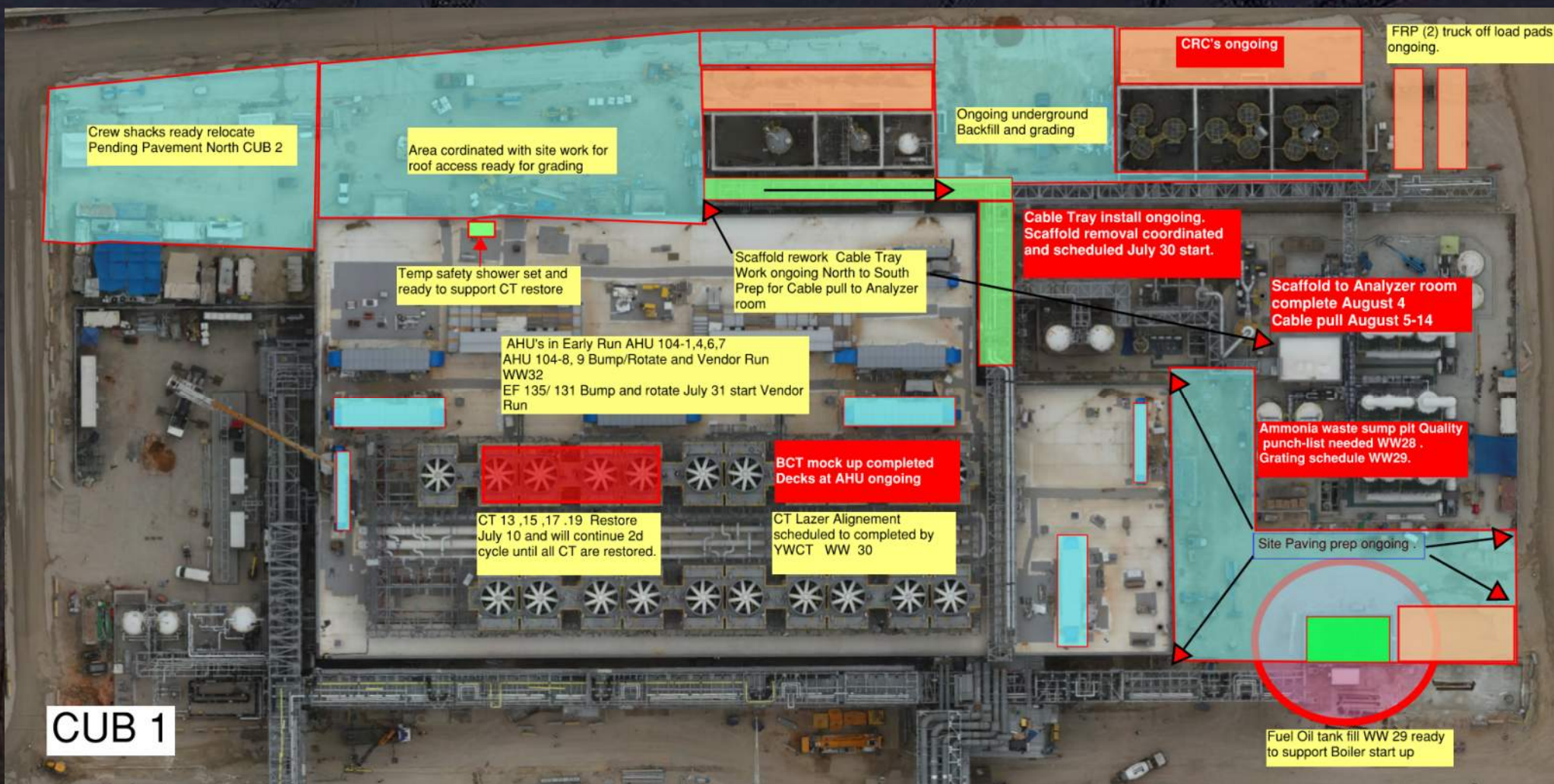
# WJG UTILITY LEVEL BUILD OUT



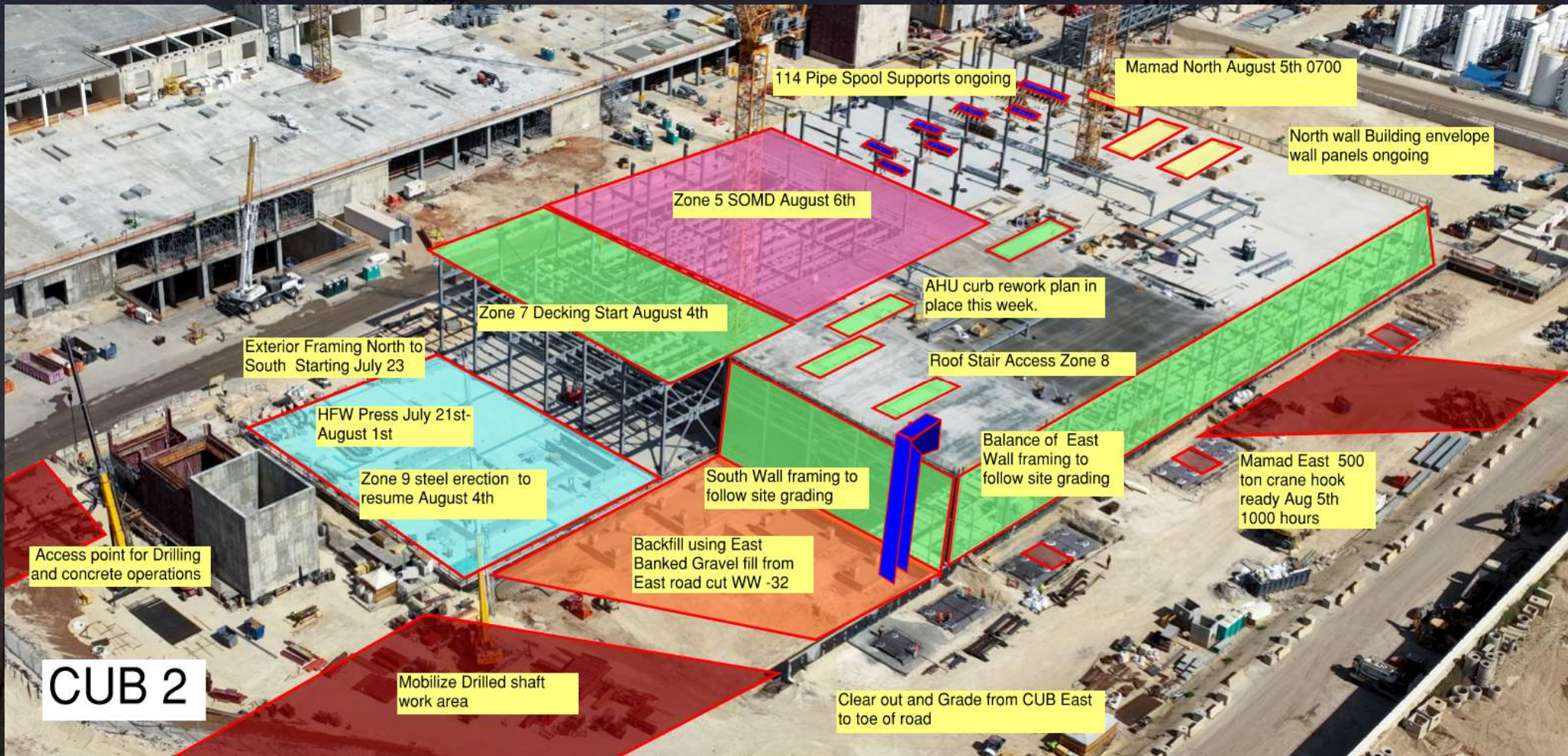




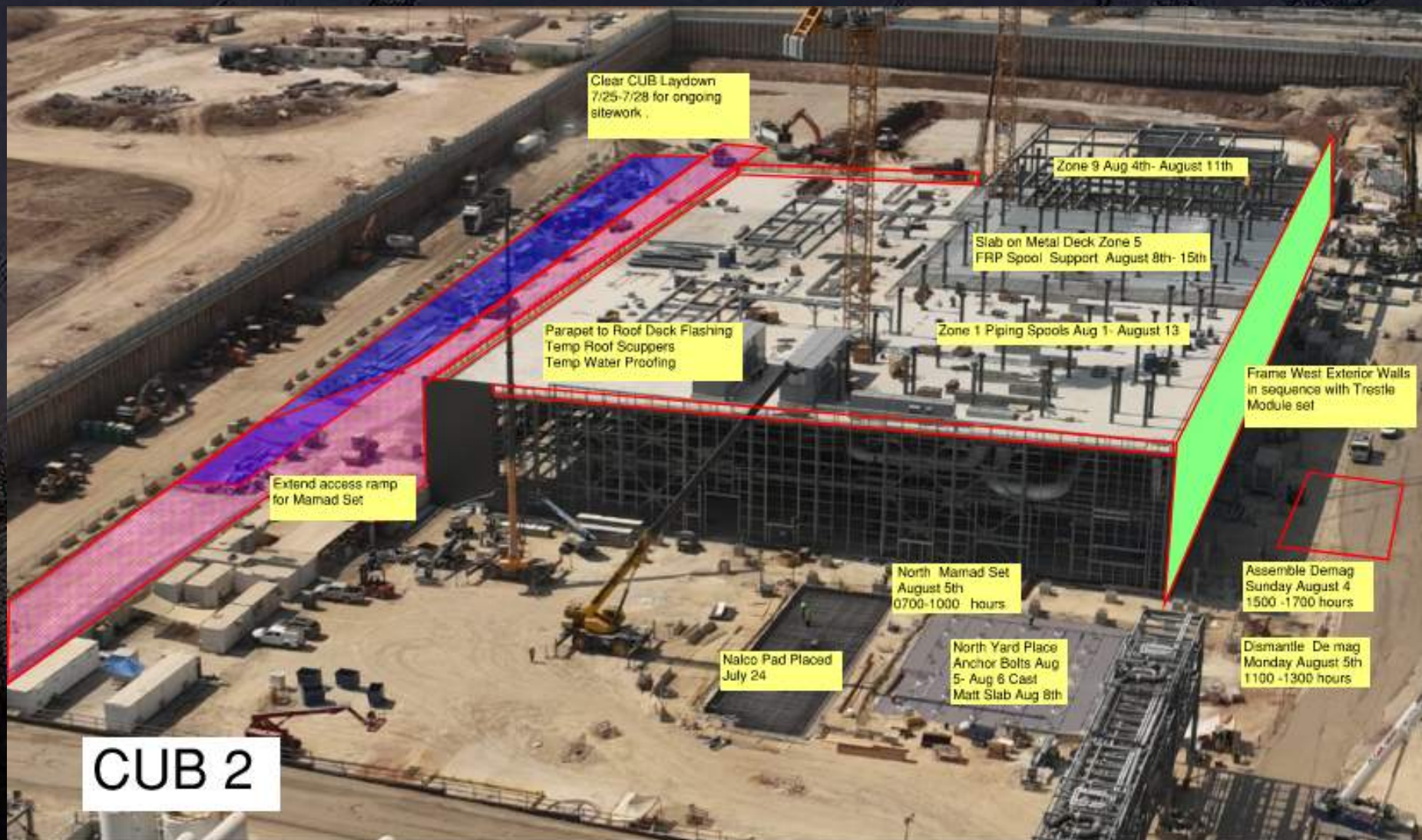














Elmor-  
Z 2- Red valve- wiring control cables  
- fixing damaged Ground grid

SIEMENS  
SES-Roxtec instai & cable covers  
AIS - Exhaust fans instal

NO ENTRY  
HV ENERGIZED AREA

Bynet SES  
-Arranging & Term FO cables

TMT  
- Z 8 instal FHC& liftstation  
pump conduits works  
- Z 5- Testing & sealing  
drainage manholes

TMT-Rimon Intel  
DW-vac truck UGU  
SAN- connect to  
manhole&cast CLSM

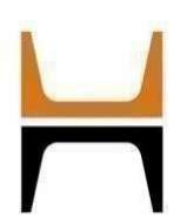




**HOFFMAN CONSTRUCTION COMPANY**







**HOFFMAN CONSTRUCTION COMPANY**

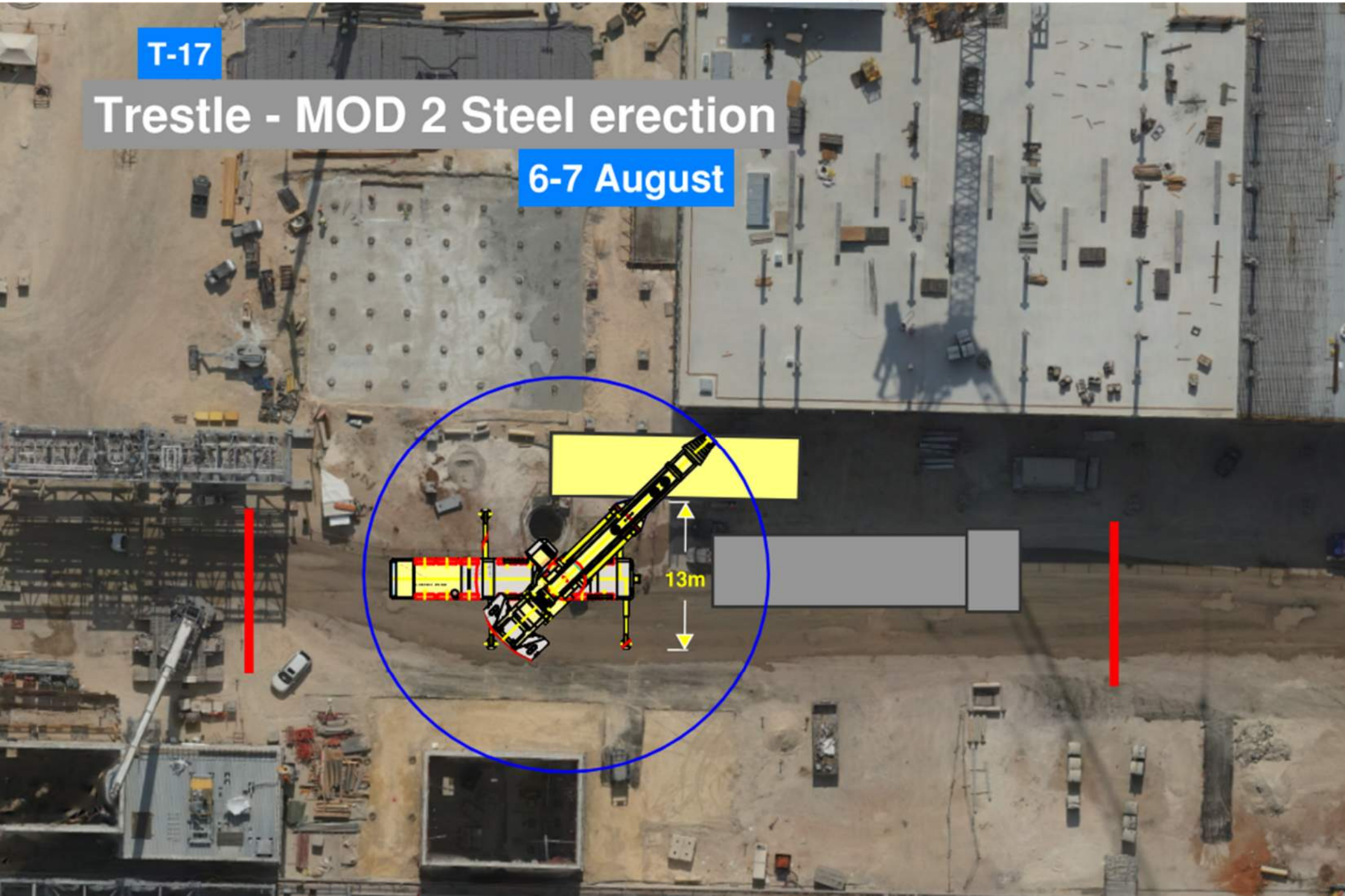


**HOFFMAN**  
Sparrow  

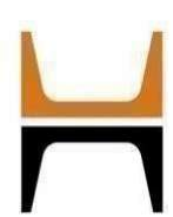
**T-17**

**Trestle - MOD 2 Steel erection**

**6-7 August**





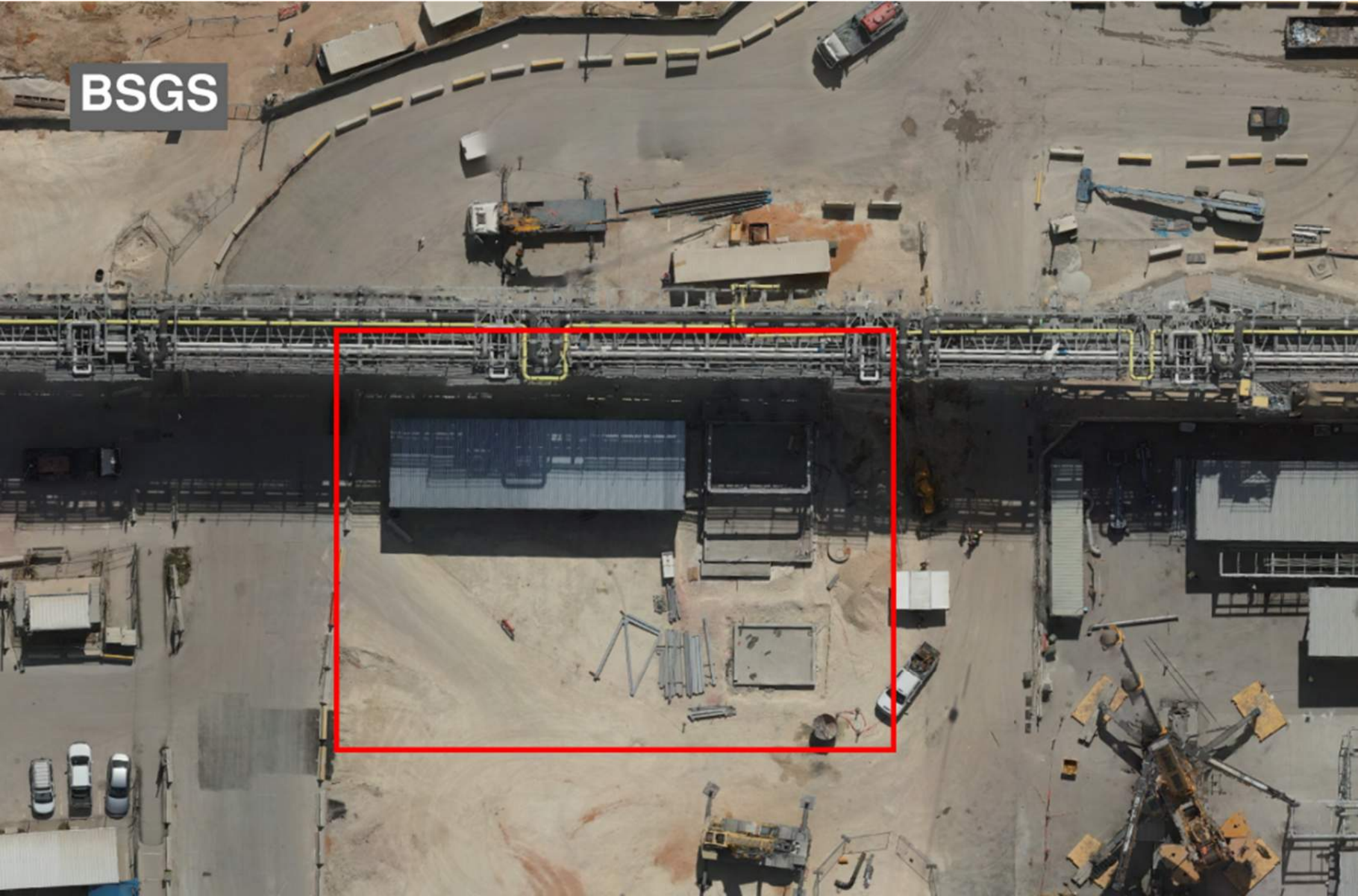


**HOFFMAN CONSTRUCTION COMPANY**

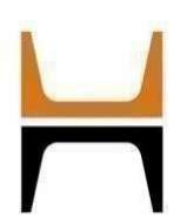


**HOFFMAN**  
Sparrow  

**BSGS**







**HOFFMAN CONSTRUCTION COMPANY**



**HOFFMAN**  
Sparrow  

**NDT radiography test at BGC vacuum tanks area**

**Spoter**

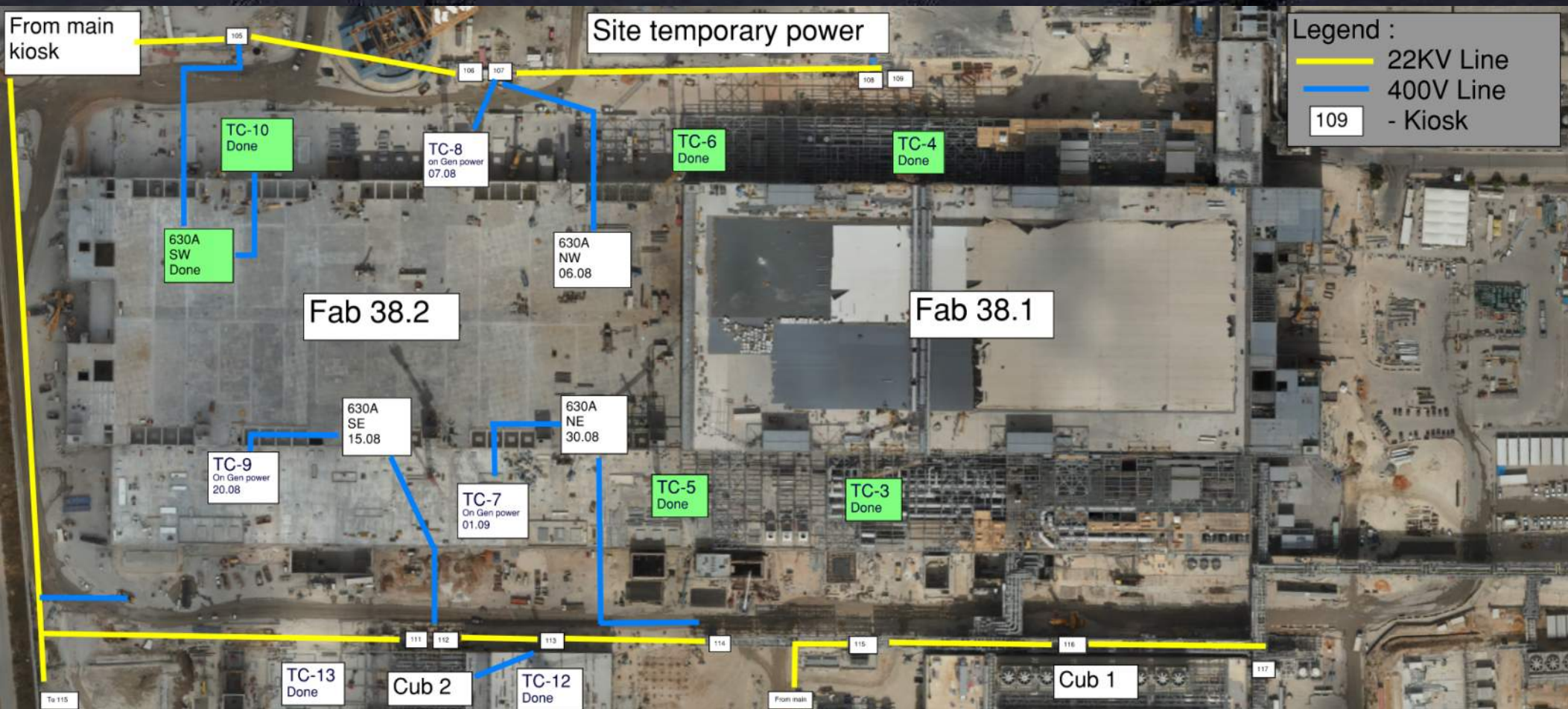
**Spoter**

**Wednesday night July 31st at  
22:00  
Finish on August 1st at 05:00am**





# Daily Coordination Meeting







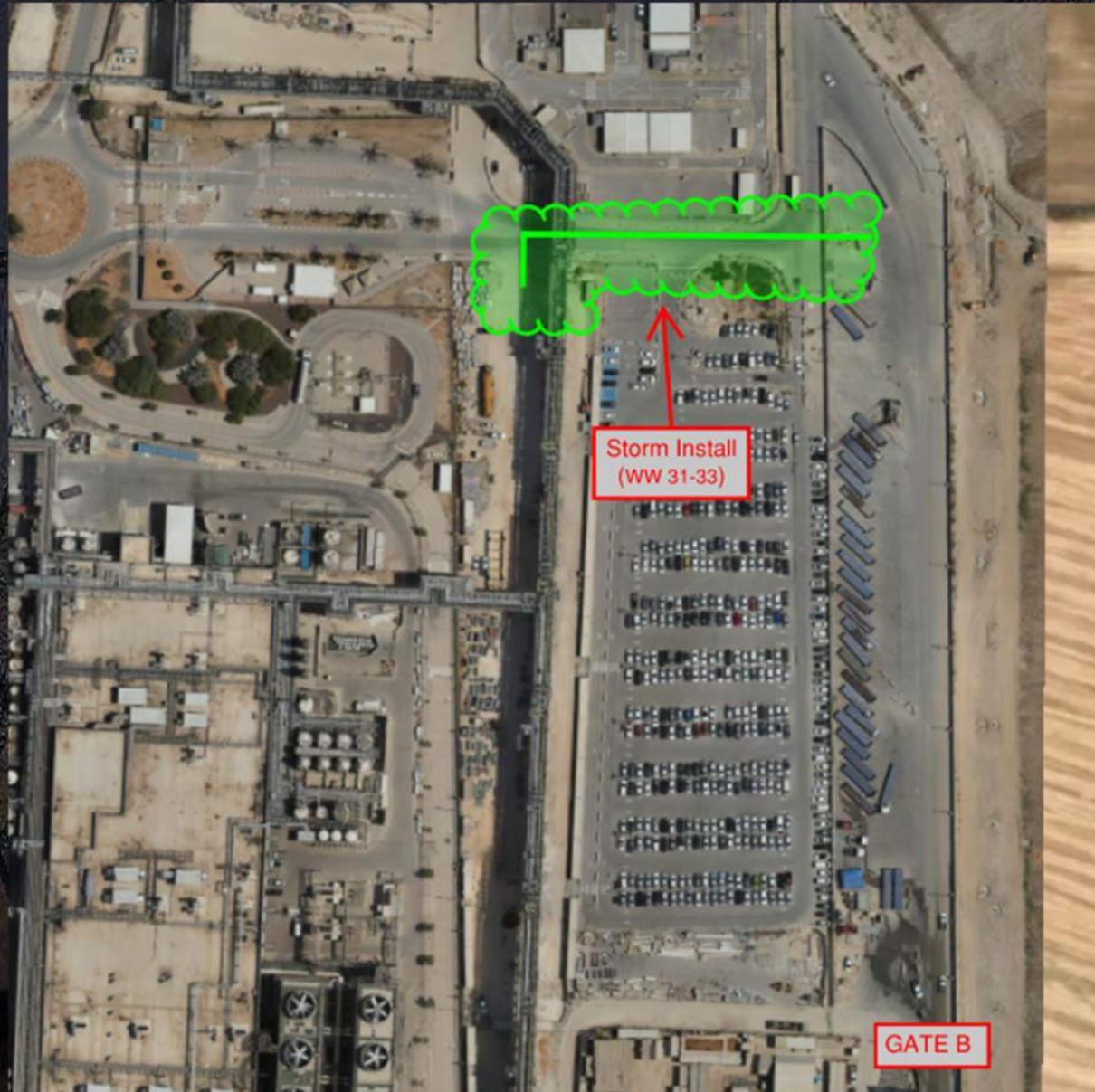
**HOFFMAN CONSTRUCTION COMPANY**



# Daily Coordination Meeting

Site Logistics

North Gate B



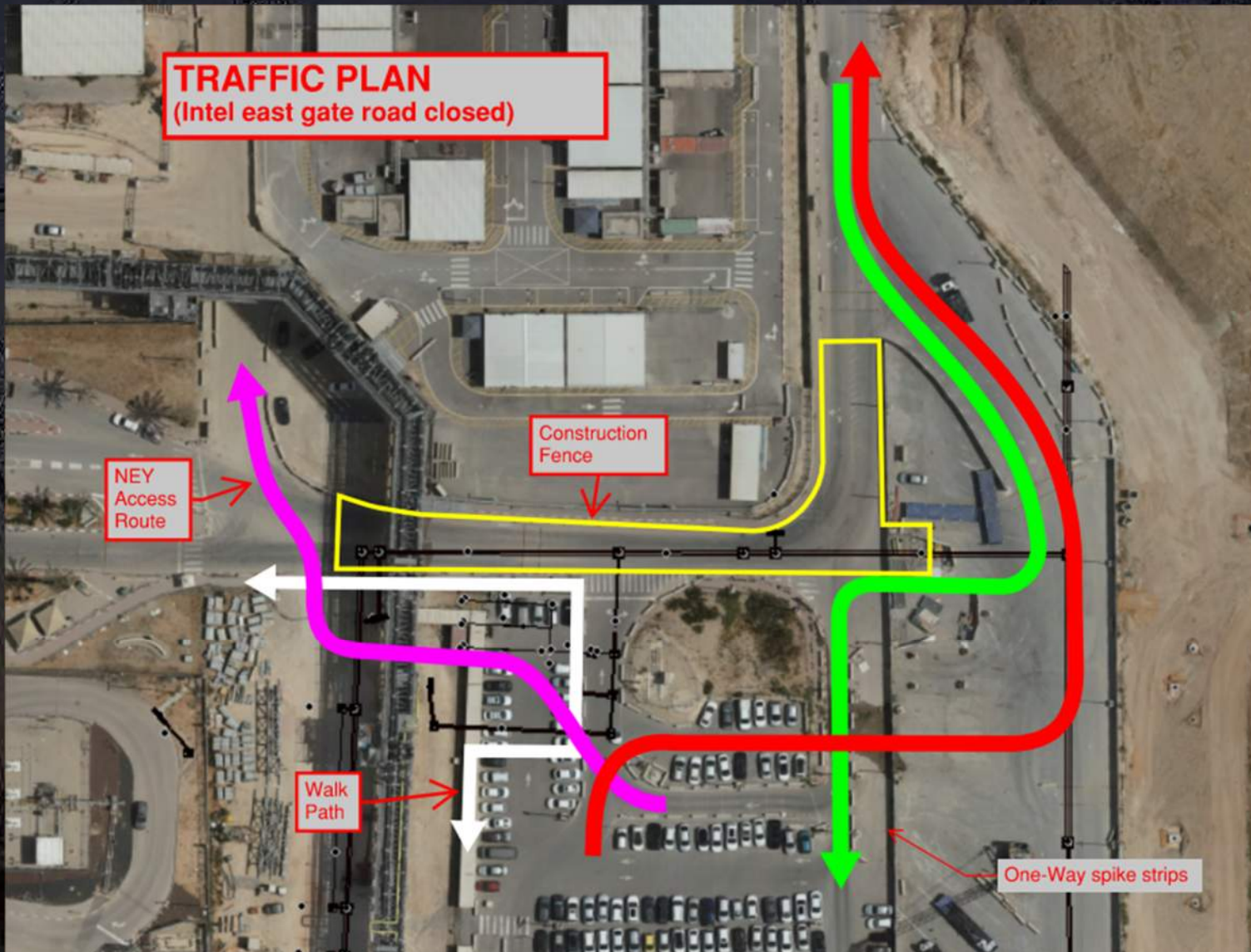




# Daily Coordination Meeting

## Site Logistics

### Traffic Plan



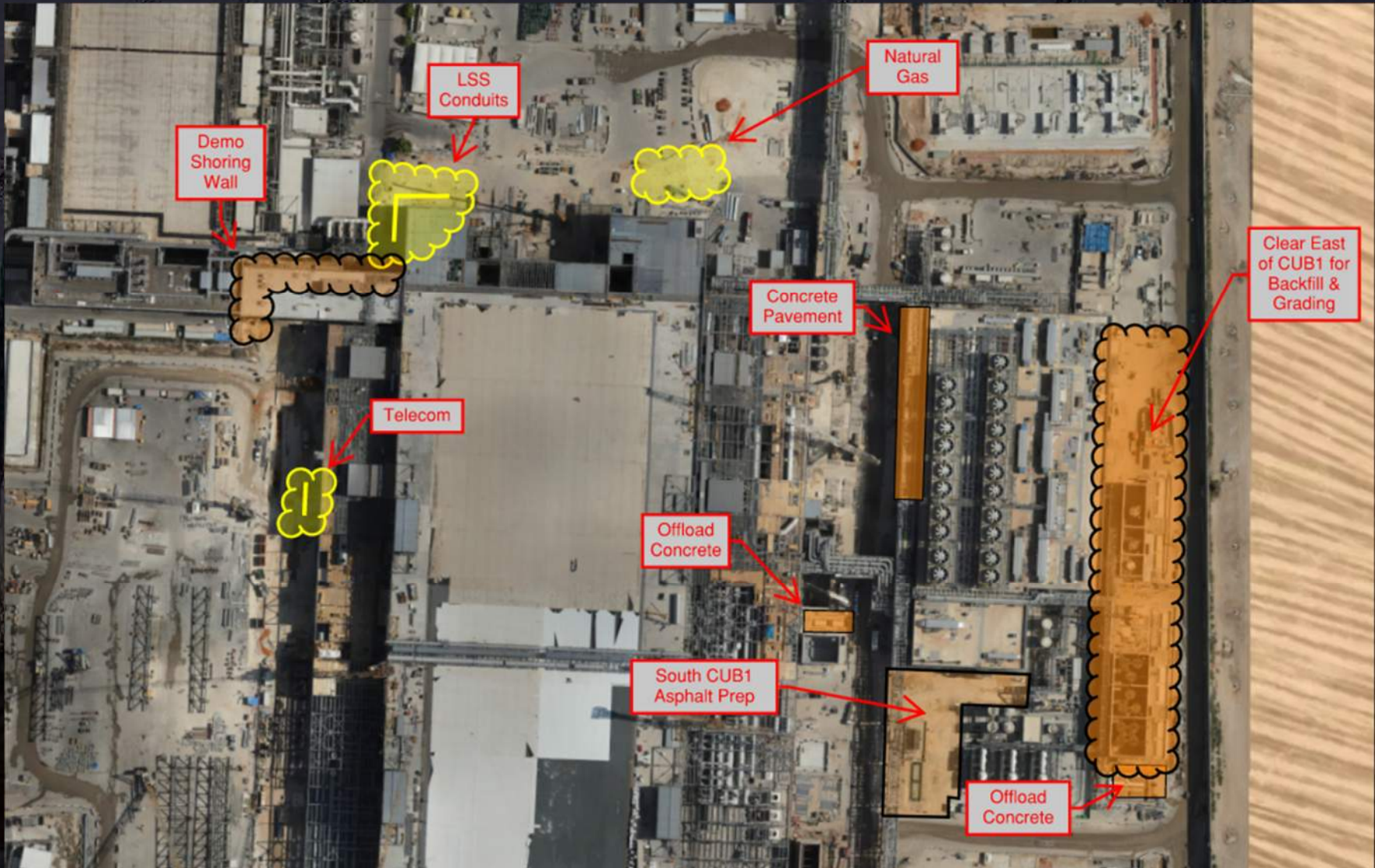




# Daily Coordination Meeting

Site Logistics

North







# Daily Coordination Meeting

## Site Logistics

### South







**HOFFMAN CONSTRUCTION COMPANY**

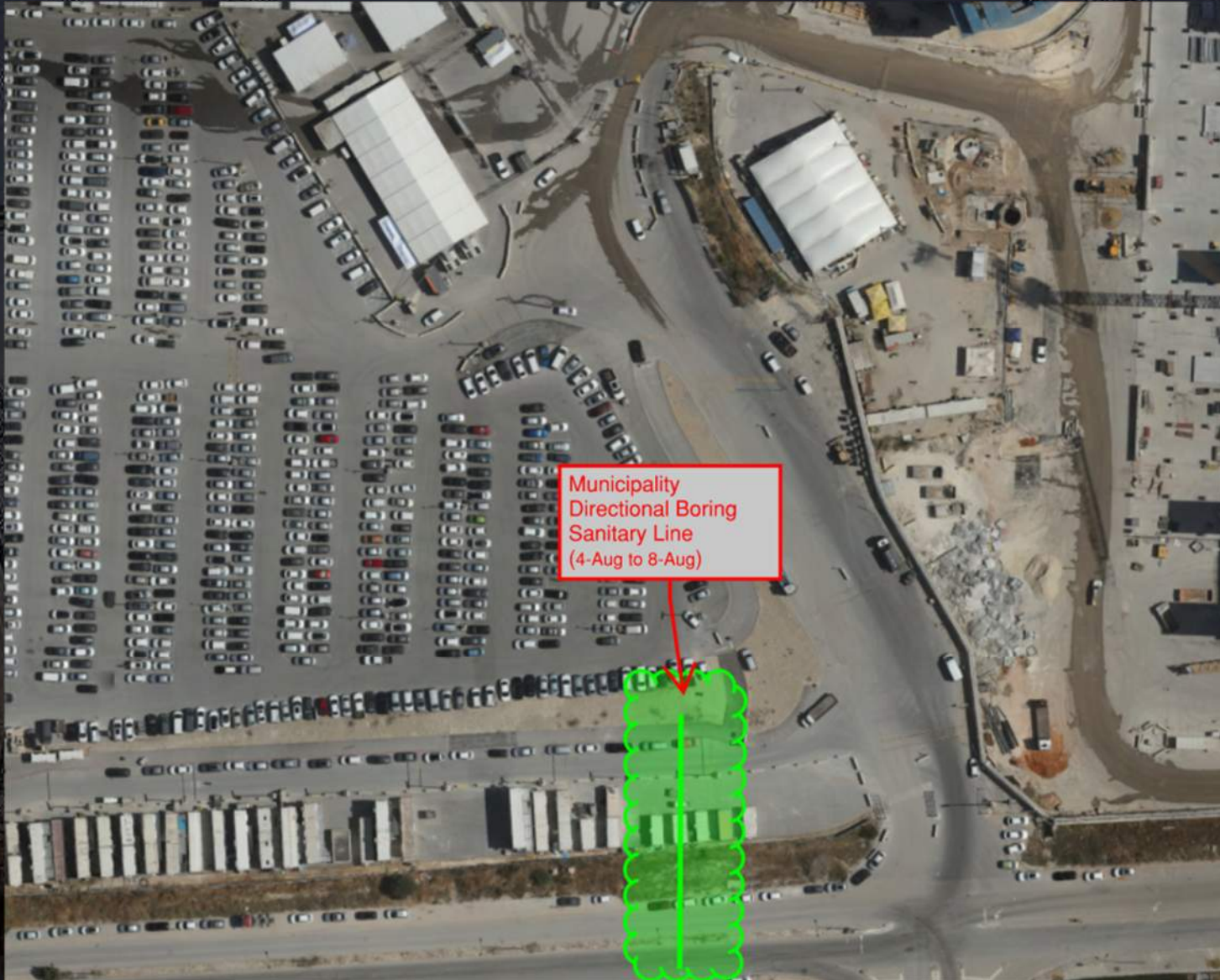


# Daily Coordination Meeting

Site Logistics

SW Parking

Sanitary







# Daily Coordination Meeting

Site Logistics

SW Parking







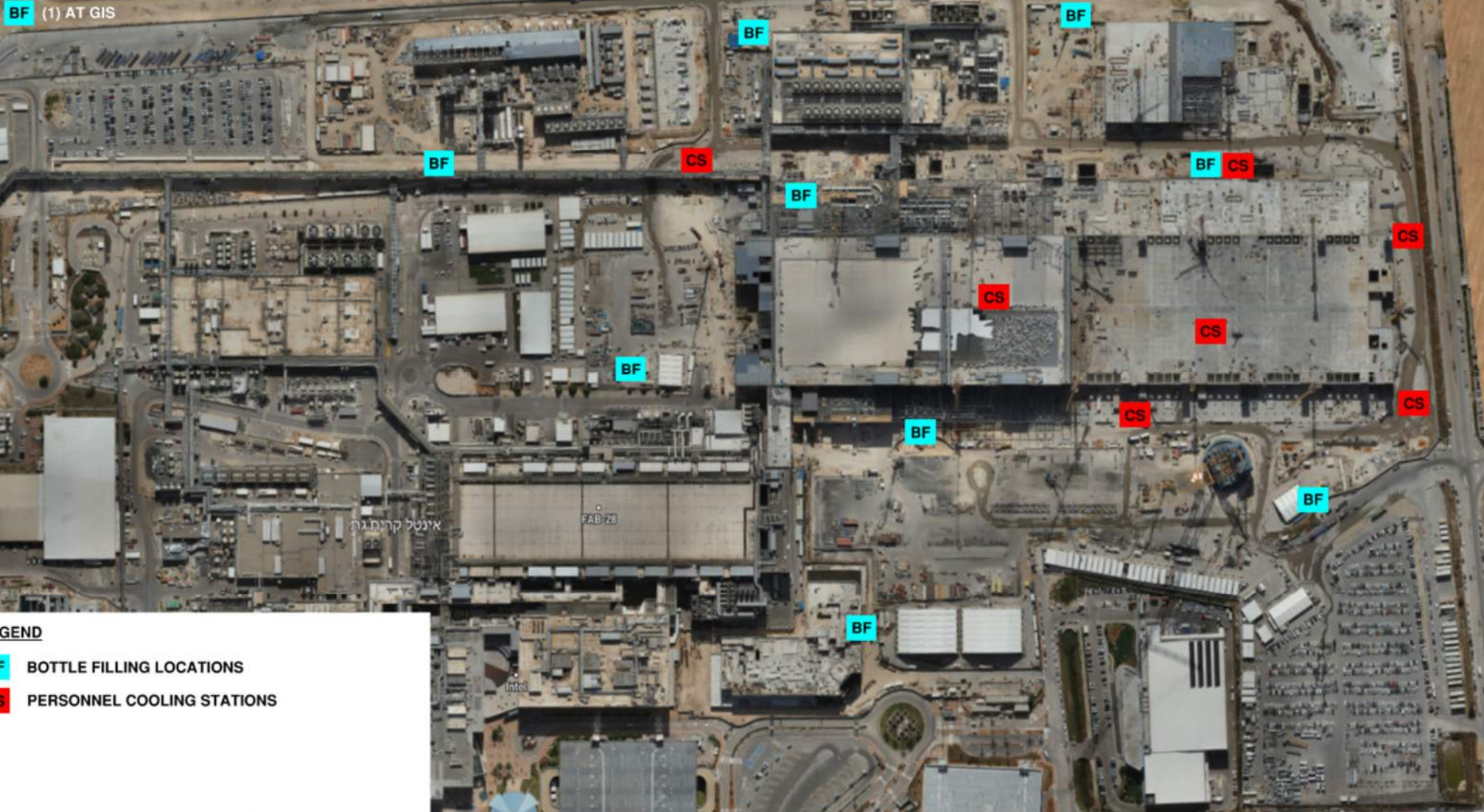
**HOFFMAN CONSTRUCTION COMPANY**



# Daily Coordination Meeting

## WATER BOTTLE FILLING & PERSONNEL COOLING STATIONS

BF (1) AT GIS



### LEGEND

- BF** BOTTLE FILLING LOCATIONS
- CS** PERSONNEL COOLING STATIONS



## Commissioning

### WW30

TCC Predicted: 105 (93 past due)

TCC Completed: **123**

Delta: **+18** (-75 total)

CCC Predicted: **51** (8 past due)

CCC Completed: **37**

Delta: **-14** (-22 total)

GT Predicted: **119** (24 past due)

GT Completed: **41**

Delta: **-78** (-102 total)







# Mentorship Program

- Mentorship programs are required for this project for all new hires. This is not simply a “buddy system” but a structured program to ensure our new hires are given the proper guidance when they are first on the project.
- It does not matter if they have 0 or 30 years of experience, the mentorship program must be applied to every single new hire.
- The newly hired employee must be in the program for a minimum of 4 weeks.
- The person that is assigned as someone's mentor cannot be their team leader, a safety person, etc. It should be someone that is doing the same job/similar the new hire will be performing.
- Mentors must understand company and site rules/policy and must be able to guide the employee. This means they need to speak the same language.



# Heat Index- July 30<sup>th</sup>

	temperature (°F)															
	80	82	84	86	88	90	92	94	96	98	100	102	104	106	108	110
Relative Humidity (%)	40	80	81	83	85	88	91	94	97	105	109	114	119	124	130	136
	45	80	82	84	87	89	93	96	100	104	109	114	119	124	130	137
	50	81	83	85	88	91	95	99	103	108	113	118	124	131	137	
	55	81	84	86	89	93	97	101	106	112	117	124	130	137		
	60	82	84	88	91	95	100	105	110	116	123	129	137			
	65	82	85	89	93	98	103	108	114	121	128	136				
	70	83	86	90	95	100	105	112	119	126	134					
	75	84	88	92	97	103	109	116	124	132						
	80	84	89	94	100	106	113	121	129							
	85	85	90	96	102	110	117	126	135							
	90	86	91	98	105	113	122	131								
	95	86	93	100	108	117	127									
	100	87	95	103	112	121	132									

 Caution
 Extreme Caution
 Danger
 Extreme Danger

## Extreme Caution

- Ensuring water and shaded areas available
- Acclimating workers
- Emergency planning and response
- Training workers and supervisors on the signs of heat stress and preventative measures
- Modified work schedules and/or rotating out workers
- Monitoring of workers for signs of heat stress



# Daily Coordination Meeting





# HCC/EHS Weekend Work- 26.07.2024

## White Board Meeting in Beavers at 06:30

### **Superintendents**

- Ethan Wolery 052-6041765
- Gilad Haziza 052-5984370

### **CSA CM**

- Idan Dahan 052-5949702
- Nikol Loboda 052-3124965
- Andy Jollands 052-9659290

### **MEP**

- Michael Ohehir 052-4168879
- Leslie Kelly 052-6391546
- Hillel Mashiah 052-6175084
- David Young 052-2241683

### **QA/Cx**

### **Cranes**

- Hadar Shem Tov 054-6693626

### **Safety**

- Safety Foreman -Waseem Alhozil- 052-358-4978
- Safety Assistant- Husam Natasheh- 053-2478114
- Safety Professional – Anan Ragbe-058-7708886



# Subcontractor Weekend Work- 26.07.2024

## FAB

### Utility Level

- Carmel raks  
Foreman; Lucy 0506552488  
Ehs; Michel 0542634700
- Combe upw  
Foreman; Edward 0526419894  
Ehs; Michael 0525506596
- Elram  
Foreman: Shlomo 0545551702  
Ehs: shy 0523632132
- Combe waste  
Foreman: Denis 0525238504  
Ehs: Michael 0525506596
- Chemo  
Ehs lilach 0547886704  
Forman sergey 0544659688
- Carmel duct
- Afcon electrical
- HYG

### Clean Room

### Subfab

- Carmel Bidud – AA scaffold removal  
Ibrahim – 052-951-9833
- Afcon E – SF LSS Rooms.     Avieli – 052-600-8487
- WW – Elev. Shaft 1

## PSSS

- Pach Taas – Module bolting PSSS Roof and Lift 2  
Foreman – Vadim – 052-6229005  
Safety – Offek – 050-7838486
- W&W – SEQ 131,134,136, and 2P Scrubber Grating  
Foreman – Willie – 052-6145521  
Safety – Gary Lambert – 1-405-833-8910
- Katz – U8 Rack 7 Plate Install  
Foreman - Polishchuk - 054-750-1845.  
Safety – Ofer Ilisar - 054-675-6690
- Katz Piping – UPW Room  
Foreman – Konstantin Tsib – 054-7861613  
Safety – Ofer Ilisar - 054-675-6690
- Afcon Electrical – Cable Tray and Cable Pulling 1-4P UL and 1-2P Roof & Lift 2  
Foreman – Charles – 055-2740190  
Safety – Stevan – 055-9129333
- Combe UPW – UPW Room, UPW Yard, and Water Reactive Piping  
Foreman – Eduard – 052-6419894  
Safety – Michael – 052-6419894
- Chemo A. – PSSS Roof and Lift 2  
Foreman – Maor – 050-955-9071  
Safety – Rotem – 054-447-7112
- HSAI – BIPA & MOD2 Stripping  
Foreman – Dave – 052-4121028  
Safety – Sam – 052-5259268
- Carmel Bidud – 5P/U8 Rack 7 Ductwork & Roof Ductwork  
Foreman – Hitim – 052-7053353  
Safety – Michael – 054-2634700

## Girts



# Subcontractor Weekend Work- 26.07.2024

## WJG

- Afcon
- W&W
- Pach Taas
- Chemo Aharon

## Site

- **Derech Afar** – Sanitary lift station & sanitary underground install  
Supervision = Raed: 054-2442030  
EHS = Alex: 054-5403849
- **Olizki** – Sweepers and water trucks, truck offloads, concrete flatwork (PCC) & excavation  
Supervision = Yossi: 052-2180485  
EHS = Ben: 052-4033565

## Trestle

- SN- Piping

## CUB

- H.s.a.i
- Chemo
- Saminajami cub 2

## GIS/NEY

TMT: •

Zone 8 Welding of fire fighting piping with the help of a crane

Zone 7+8+warehouse general cleaning and hot work in favor of a concrete floor 1\*1

Manager - Ido Deus 050-866262