

# Daily Coordination Meeting



14:00 Sign In

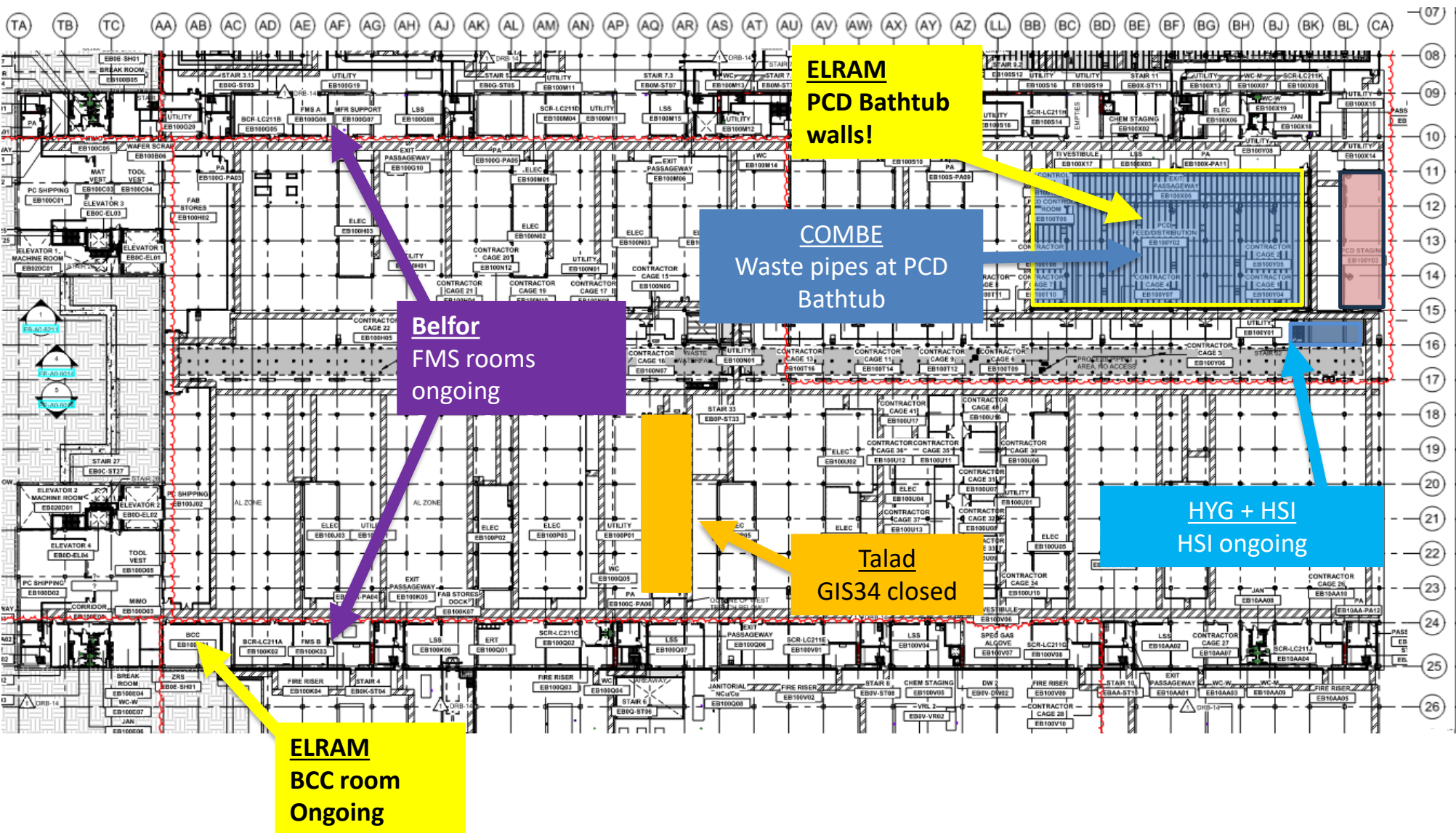
# Daily Coordination Meeting

General Topics:

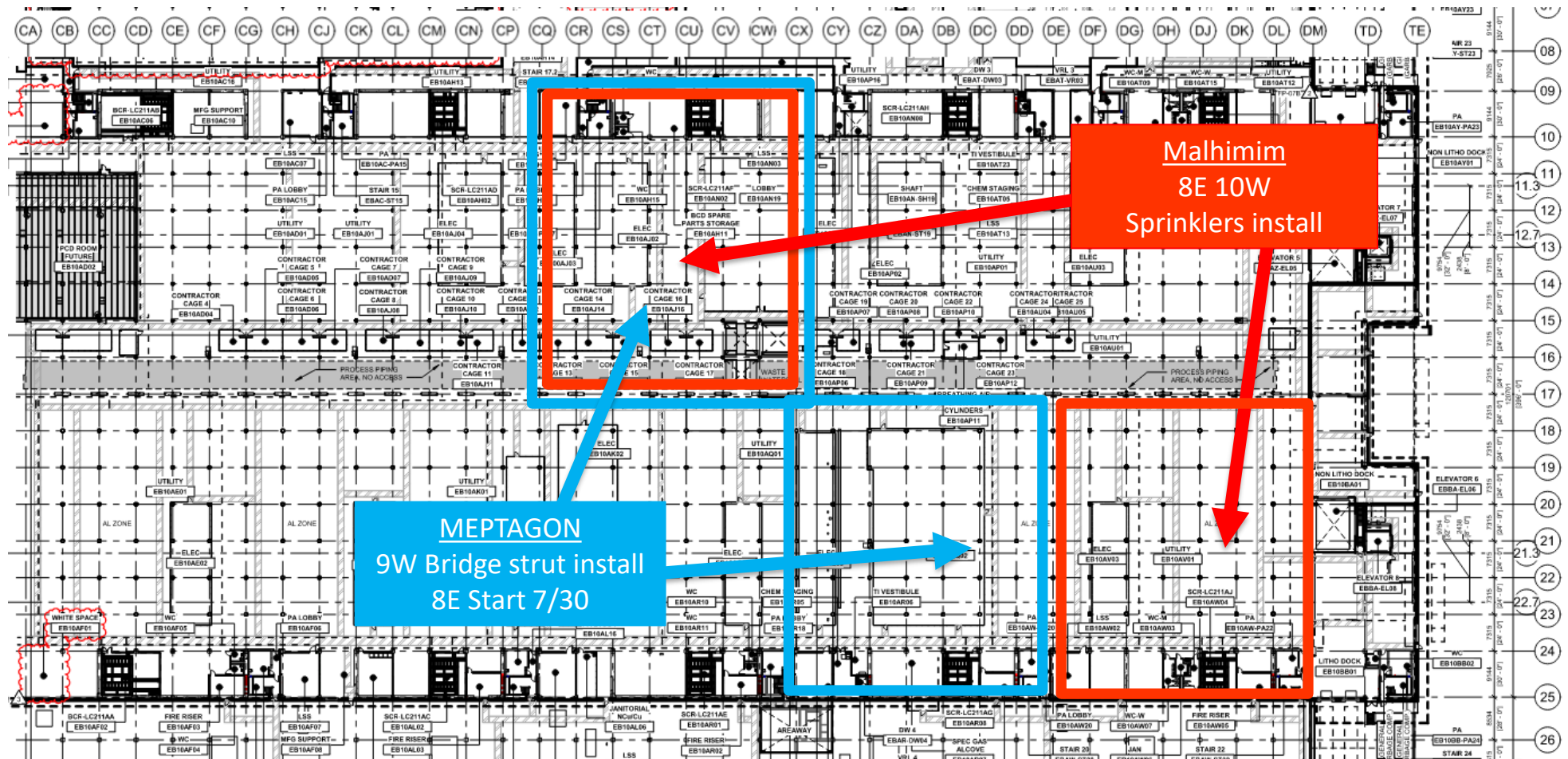
- Storing material near leading edges



# UTILITY LEVEL MOD1



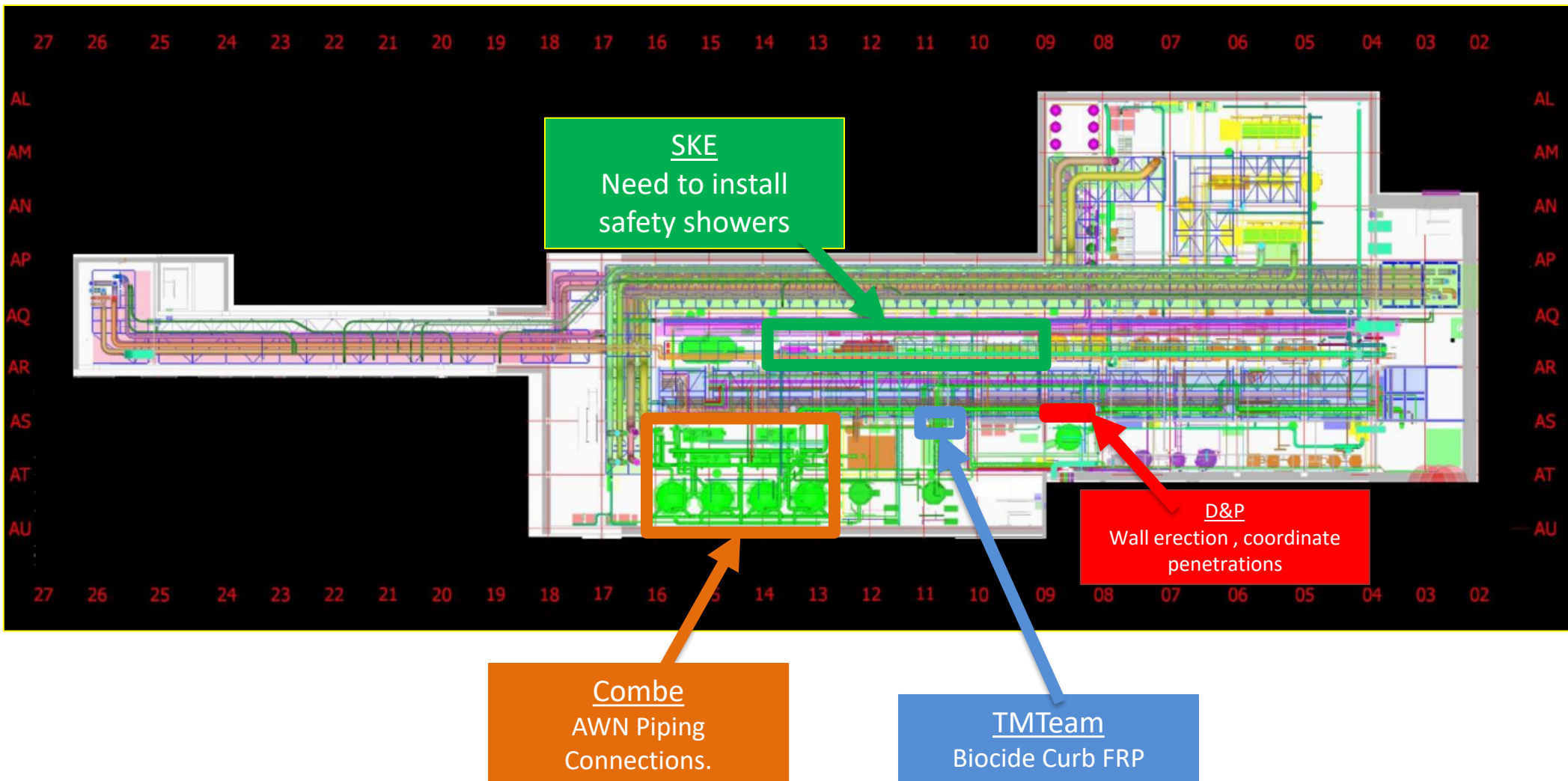
# UTILITY LEVEL MOD2





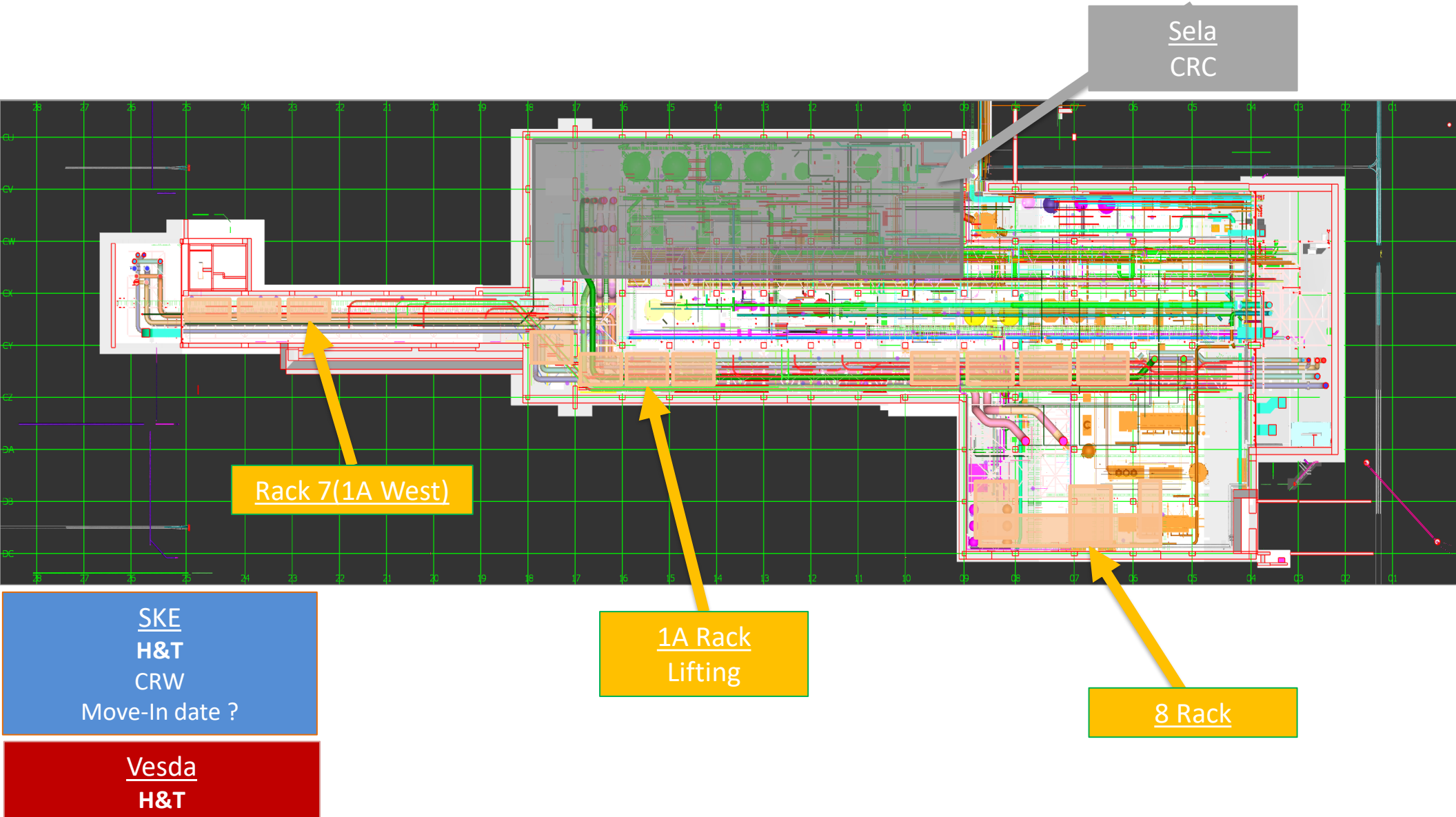


## SUT 38.1 LEVEL



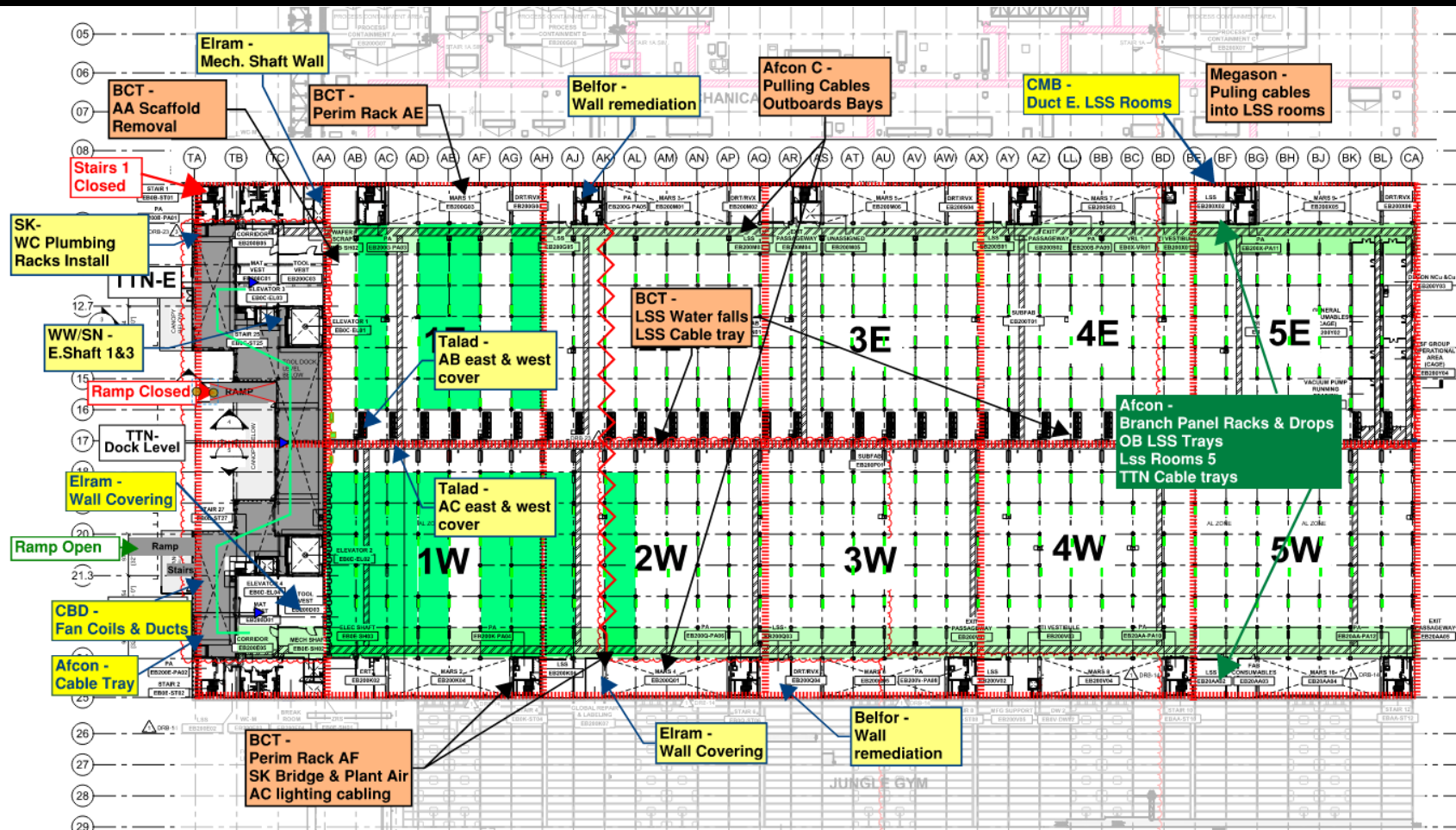


## SUT 38.2 LEVEL

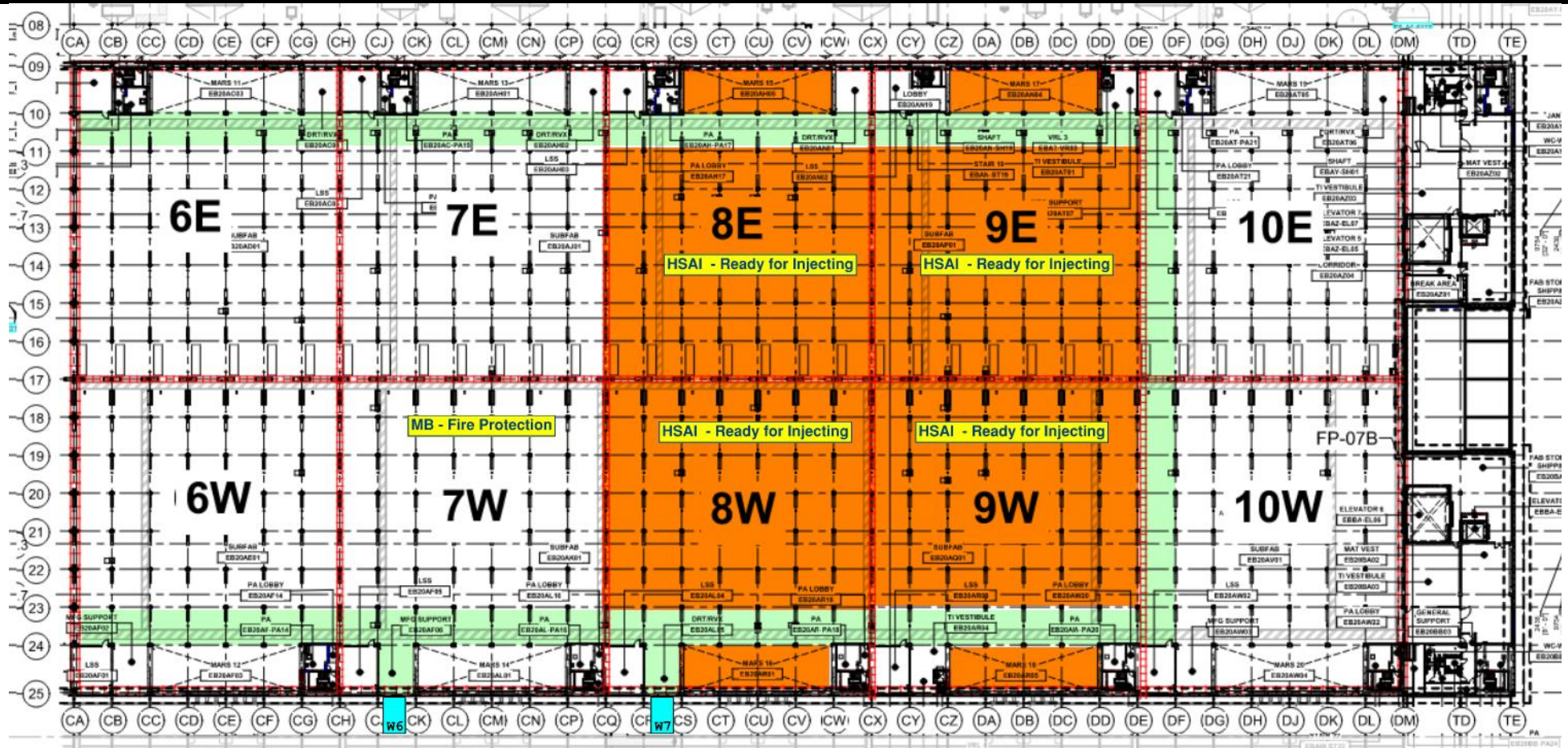




# SUBFAB BUILDOUT MOD 1












## SUBFAB BUILDOUT MOD 2







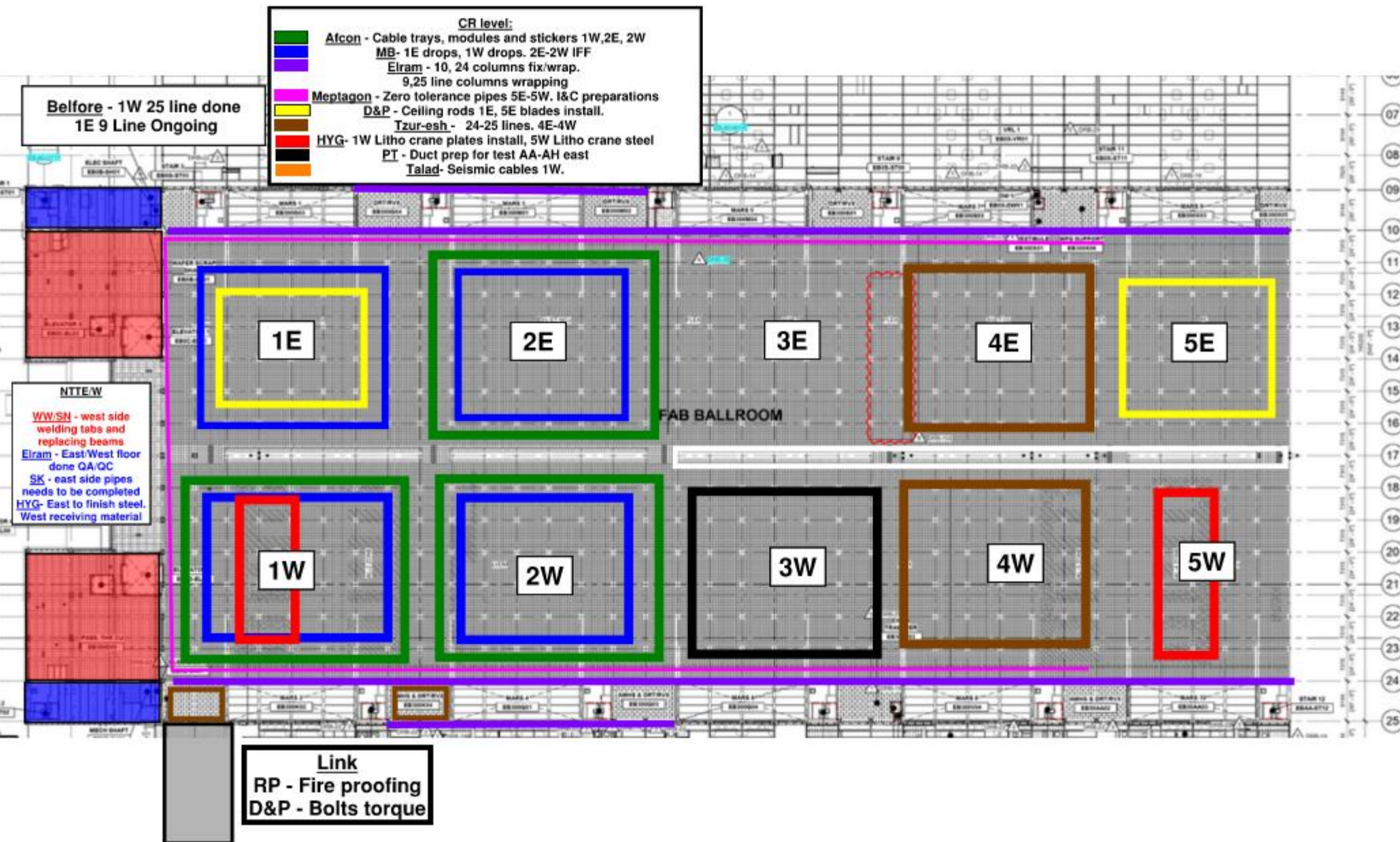
CR level:	
	<b>Alcon</b> - Cable trays, modules and stickers 1W,2E, 2W
	<b>MB</b> - 1E drops, 1W drops. 2E-2W IFF
	<b>Elram</b> - 10, 24 columns fix/wrap. 9,25 line columns wrapping
	<b>Meptagon</b> - Zero tolerance pipes 5E-5W. I&C preparations
	<b>D&amp;P</b> - Ceiling rods 1E, 5E blades install.
	<b>Tzur-esh</b> - 24-25 lines. 4E-4W
	<b>HYG</b> - 1W Litho crane plates install, 5W Litho crane steel
	<b>PT</b> - Duct prep for test AA-AH east
	<b>Talad</b> - Seismic cables 1W.

**Before** - 1W 25 line done  
1E 9 Line Ongoing

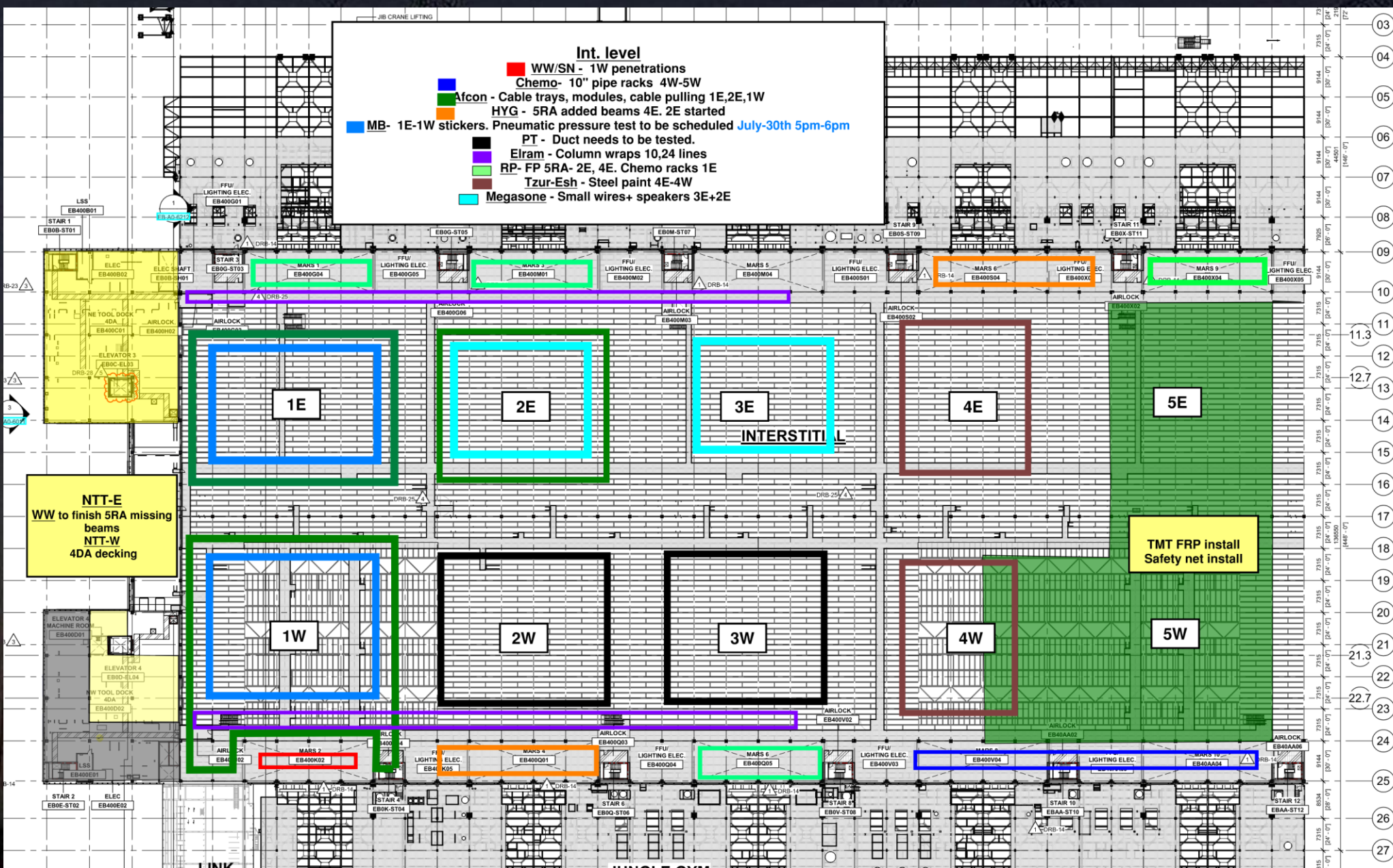
**NTTE/W**

**WW/SN** - west side  
welding tabs and  
replacing beams  
**Elram** - East/West floor  
done QA/QC  
**SK** - east side pipes  
needs to be completed  
**HYG** - East to finish steel.  
West receiving material

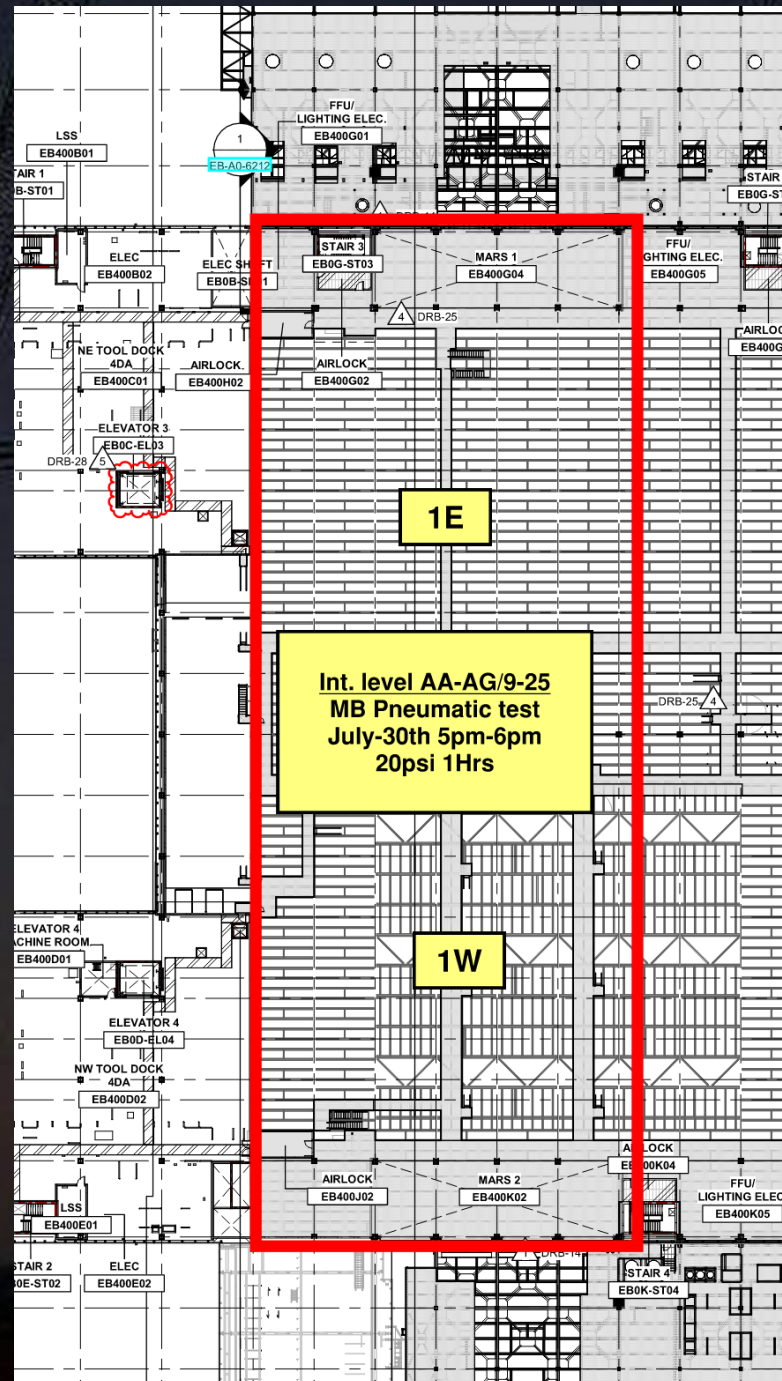
**Link**  
RP - Fire proofing  
D&P - Bolts torque







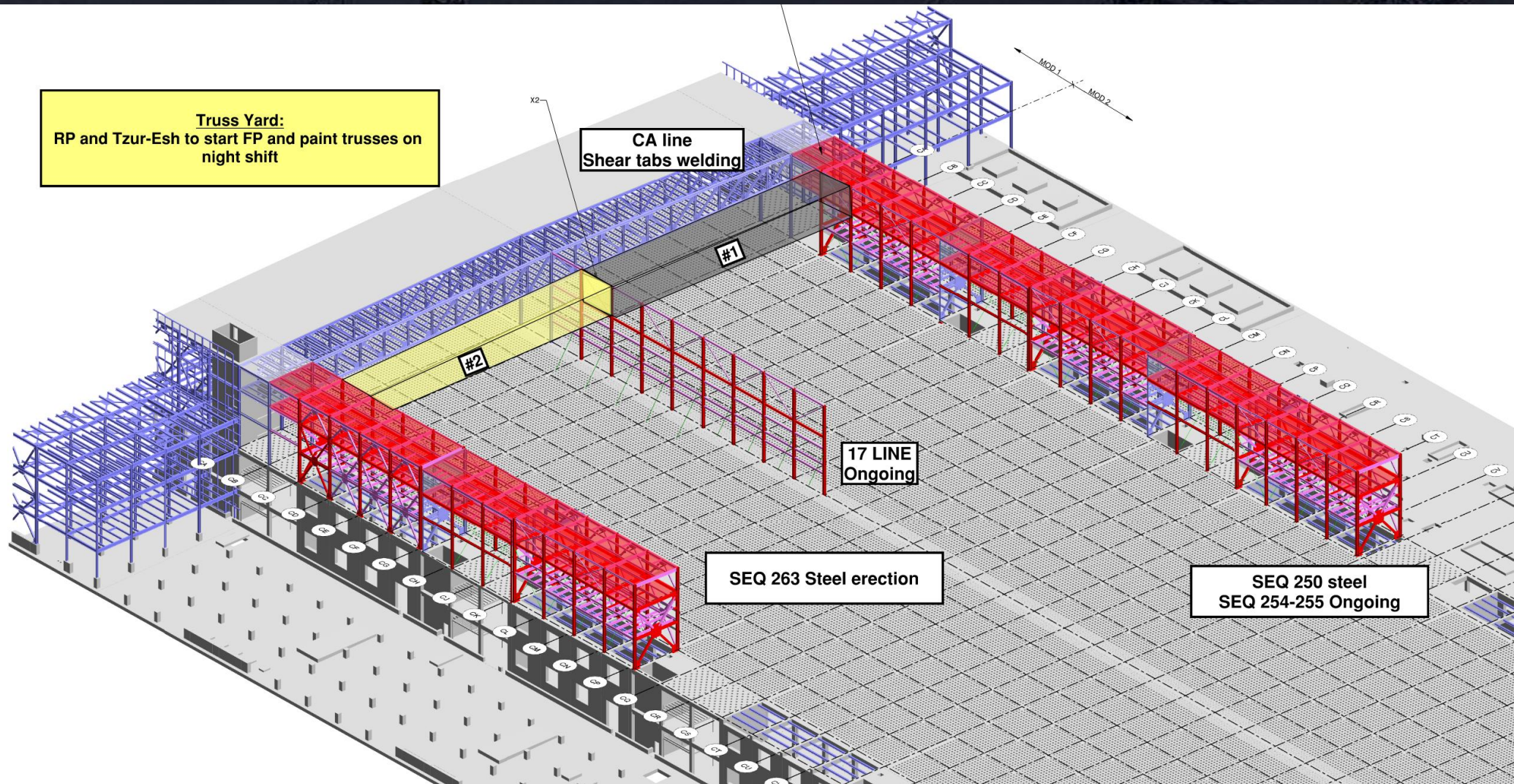








**HOFFMAN CONSTRUCTION COMPANY**



**Truss Yard:**

RP and Tzur-Esh to start FP and paint trusses on night shift

CA line  
Shear tabs welding

#1

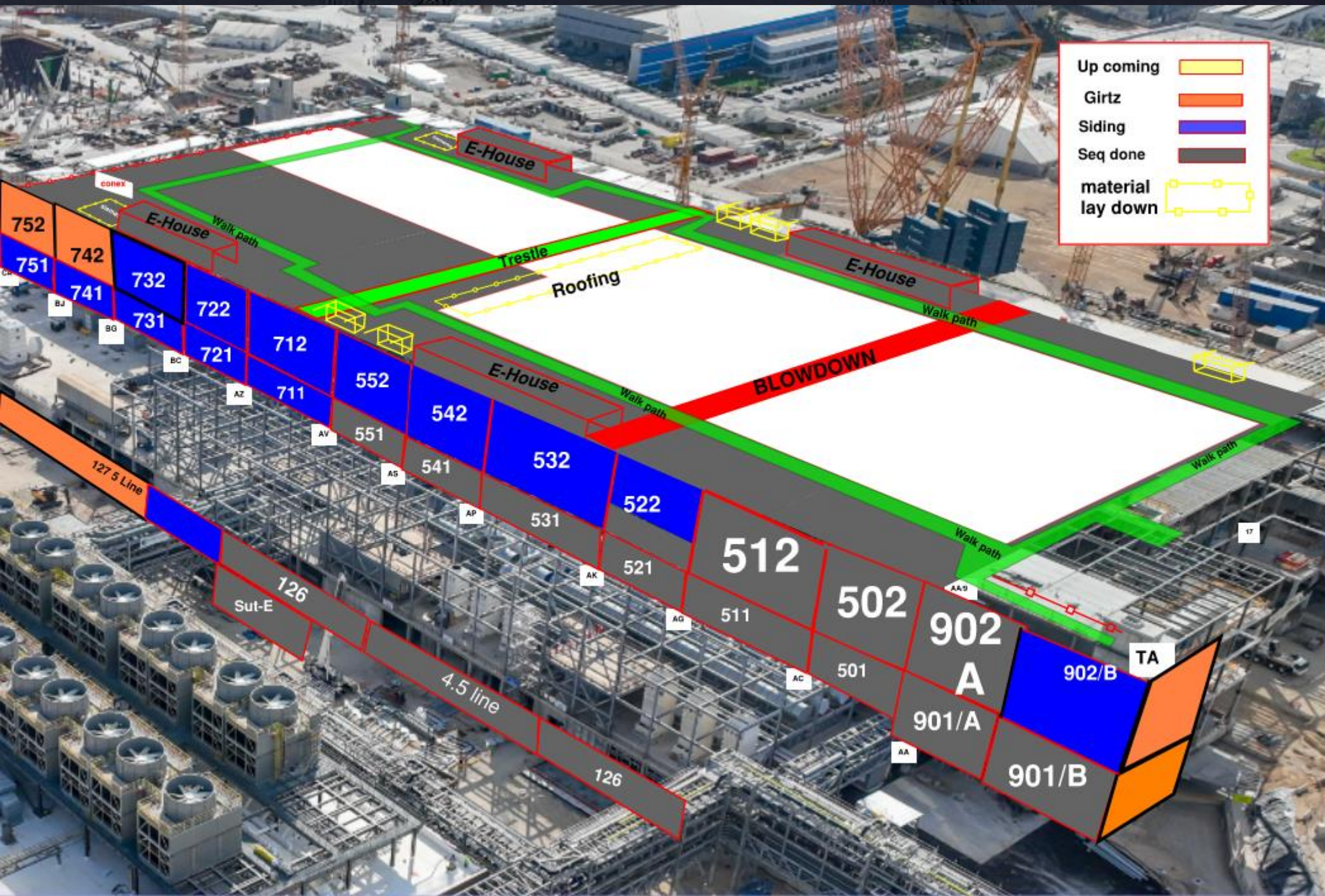
#2

17 LINE  
Ongoing

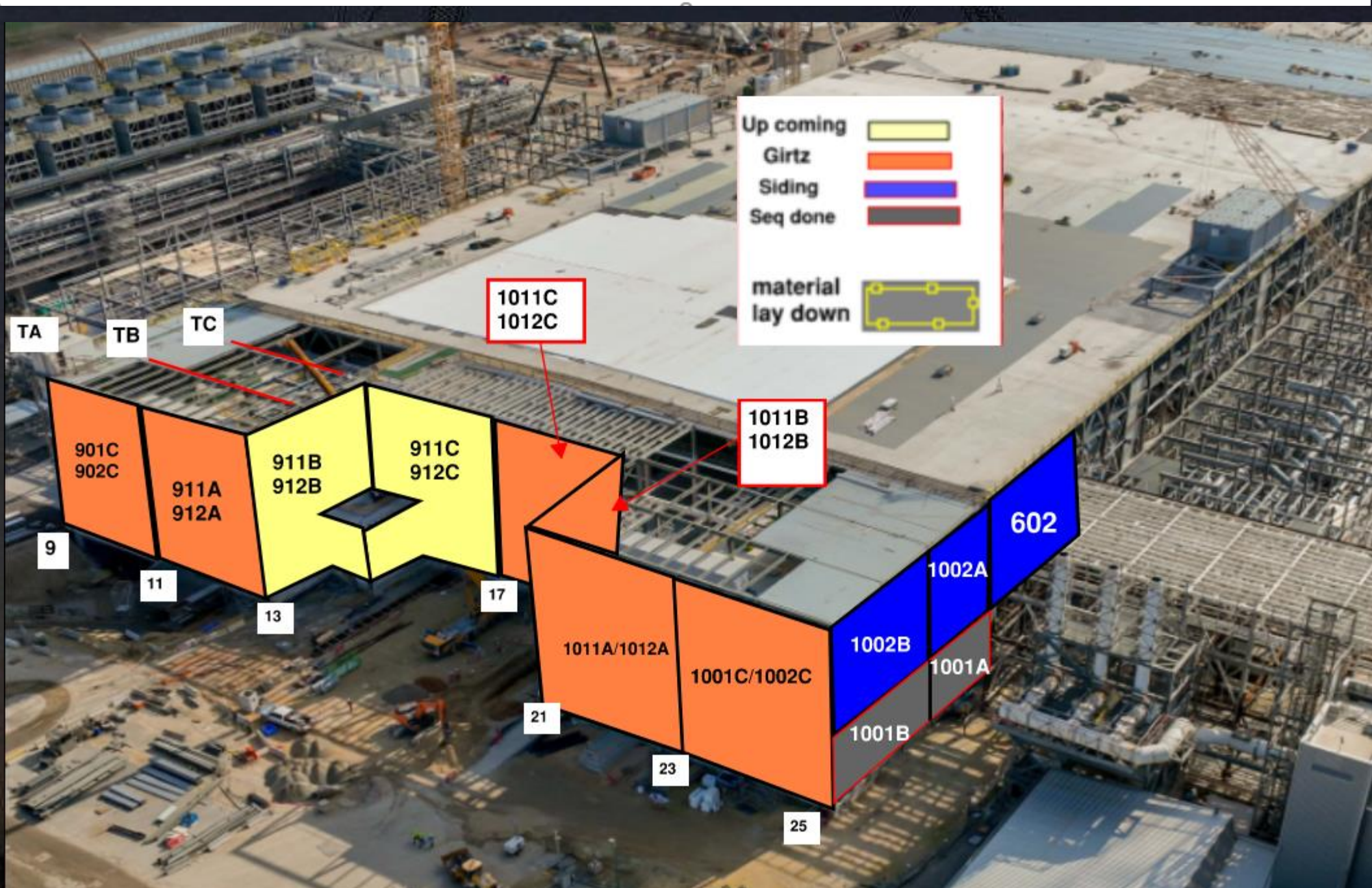
SEQ 263 Steel erection

SEQ 250 steel  
SEQ 254-255 Ongoing

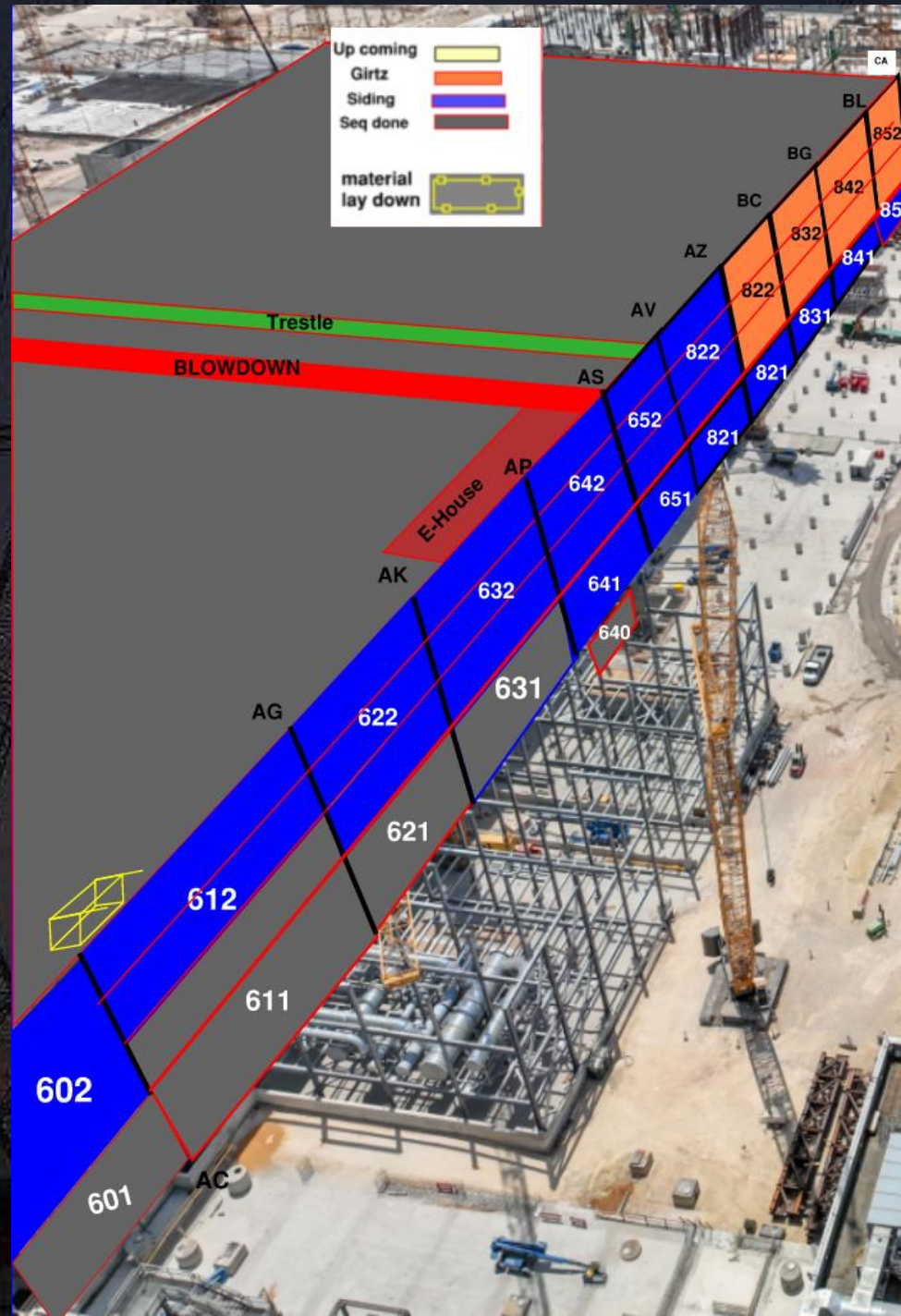








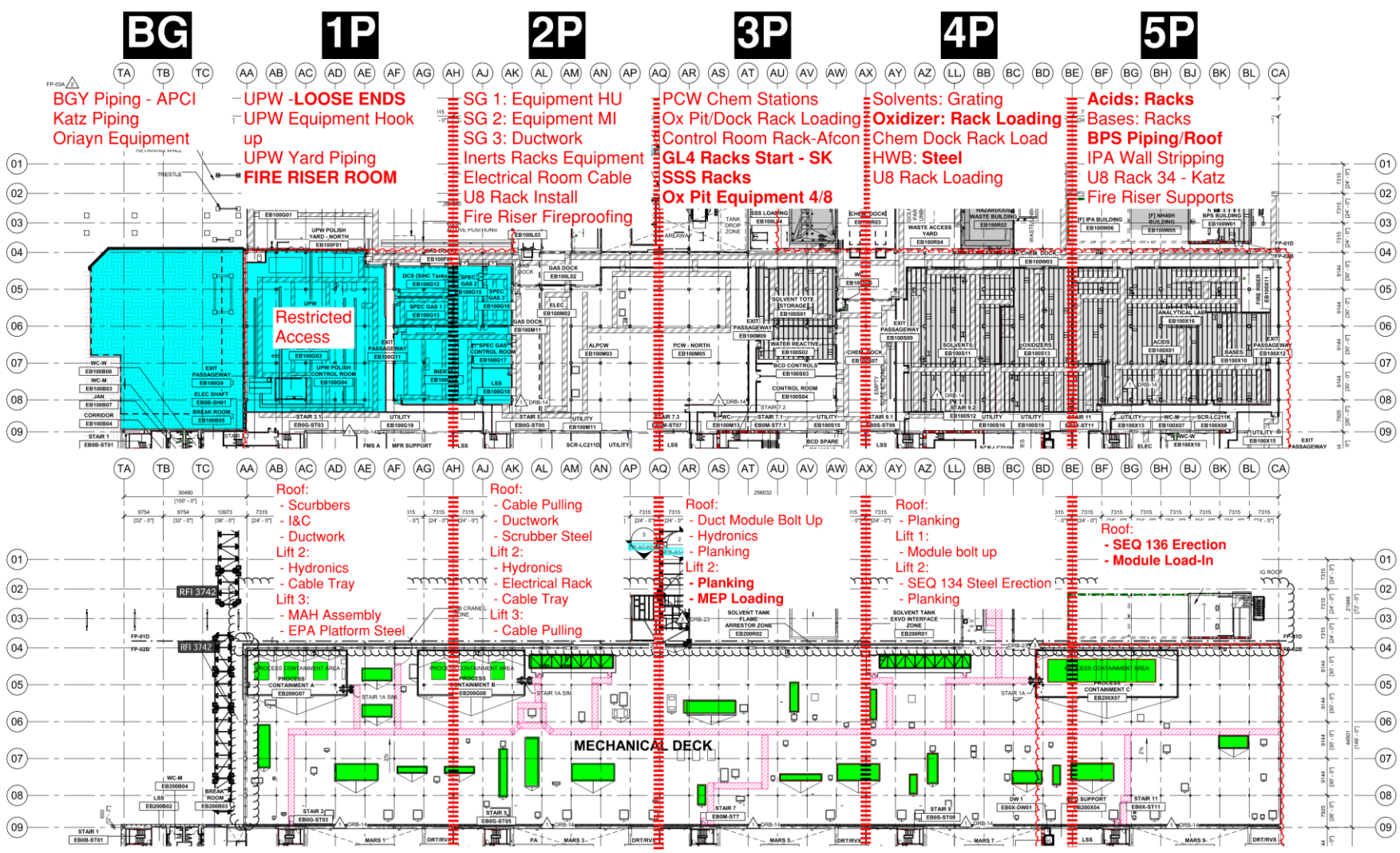




# PSSS.1

Utility Level  
1YA

PSSS Roof  
2SA

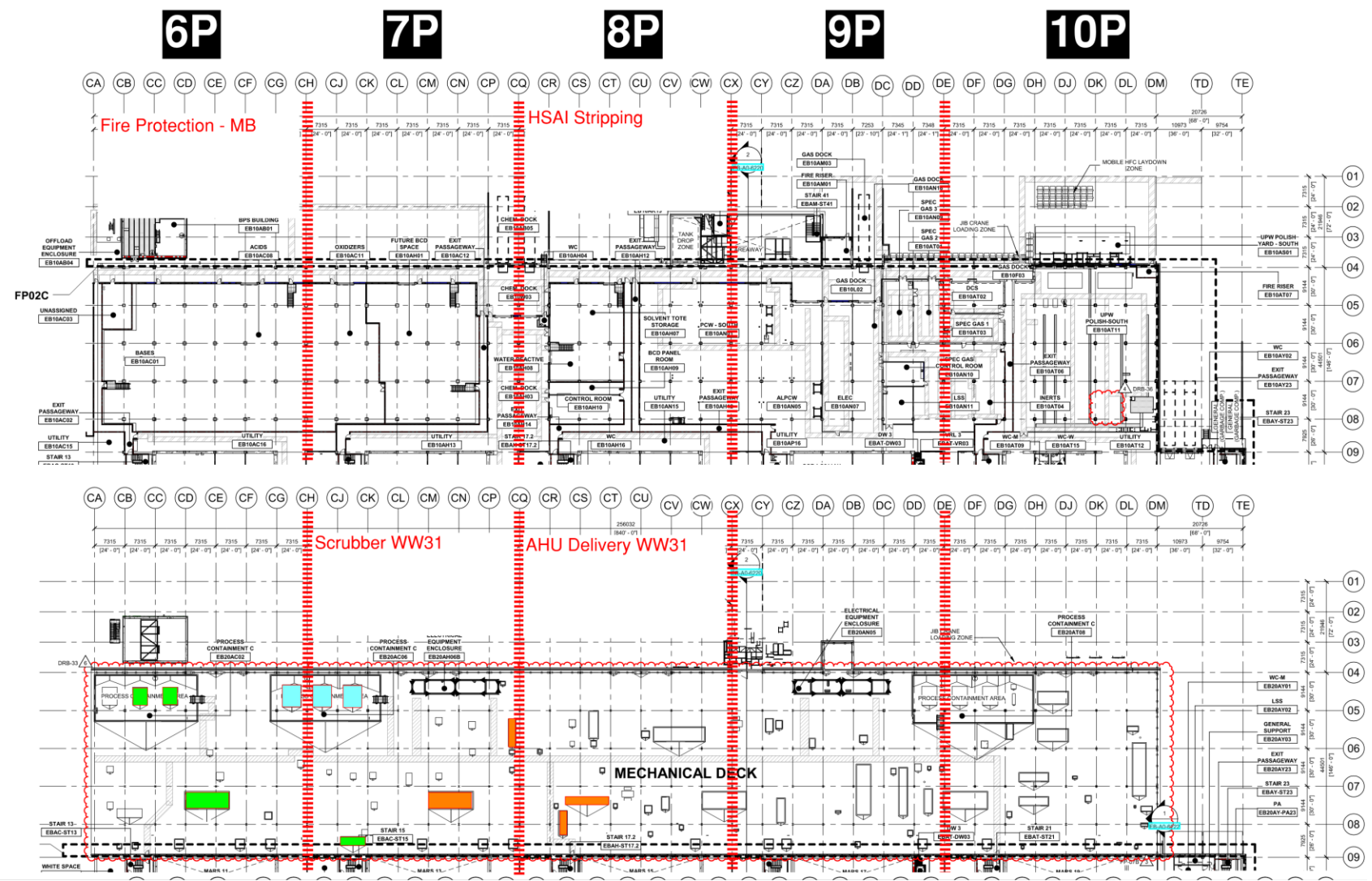


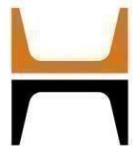


# PSSS.2

Utility Level  
1YA

PSSS Roof  
2SA





## WJG 01J, 02J LIFT 2 & 3

MAH  
Scaffold -  
Green Tag

MAH  
Scaffold -  
Yellow Tag

LIFT 2:  
AFCON CABLE TRAY INSTALLATION  
PACH TAAS - DUCTWORK  
CHEMO - PUNCHLIST/PRESSURE TESTING

UNDER LINK  
SK - DOMESTIC WATER





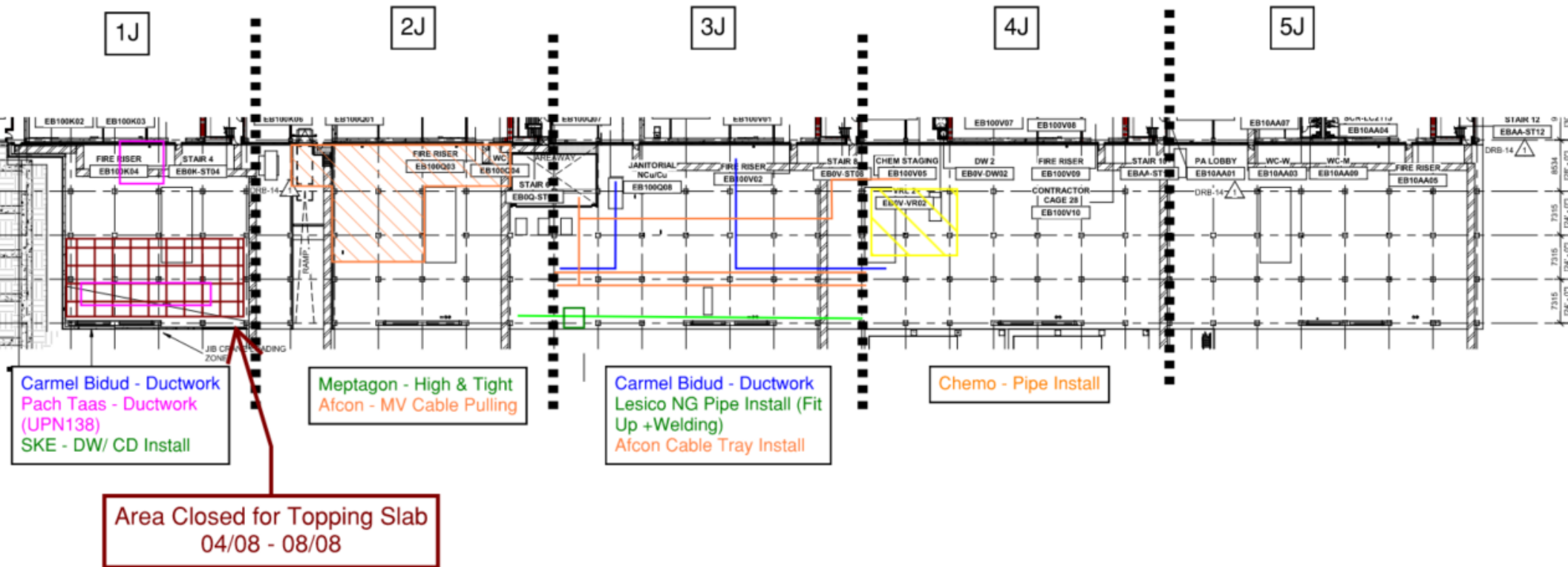


# WJG 03J, 04J, 05J LIFT 2 & 3

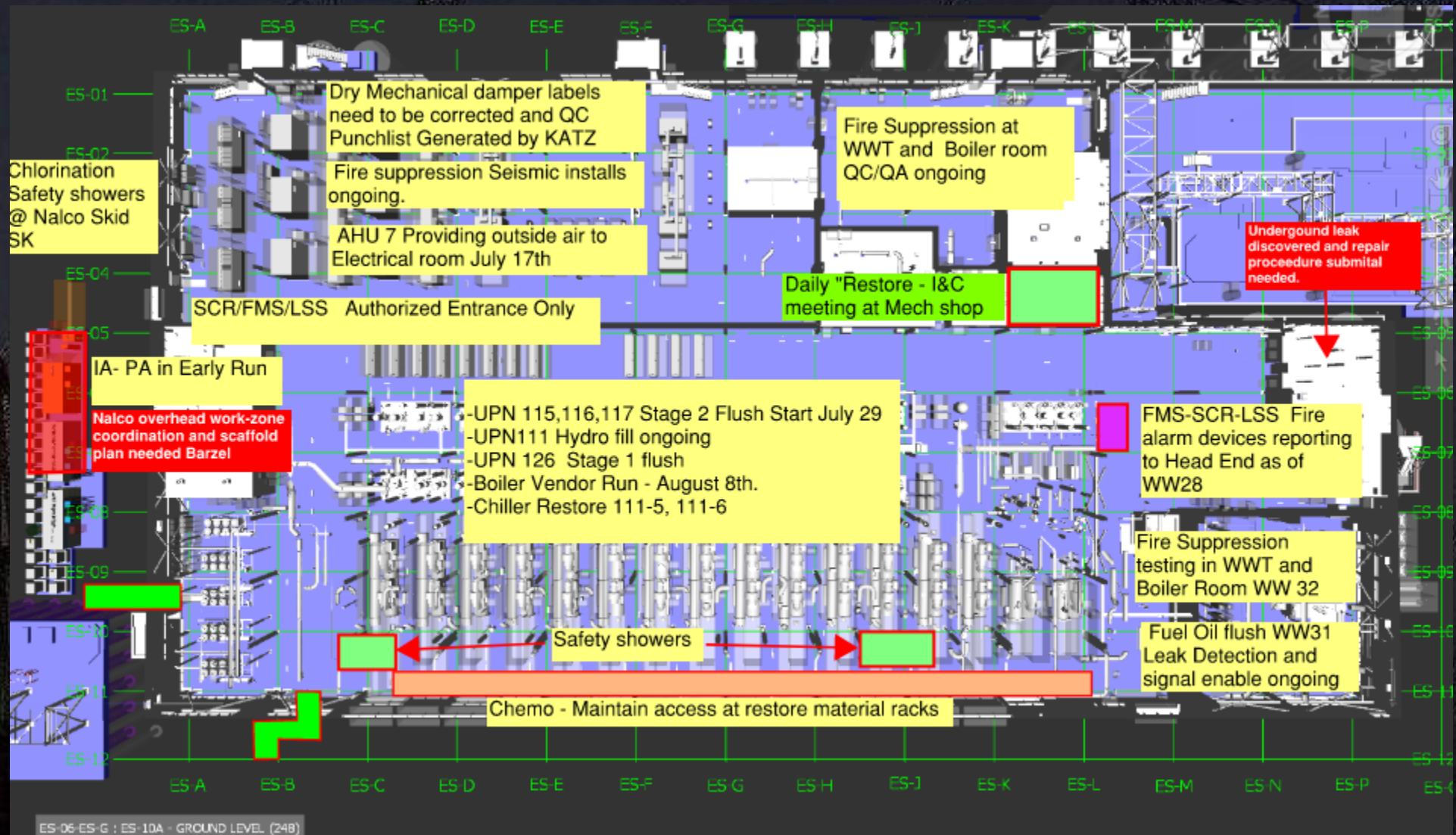




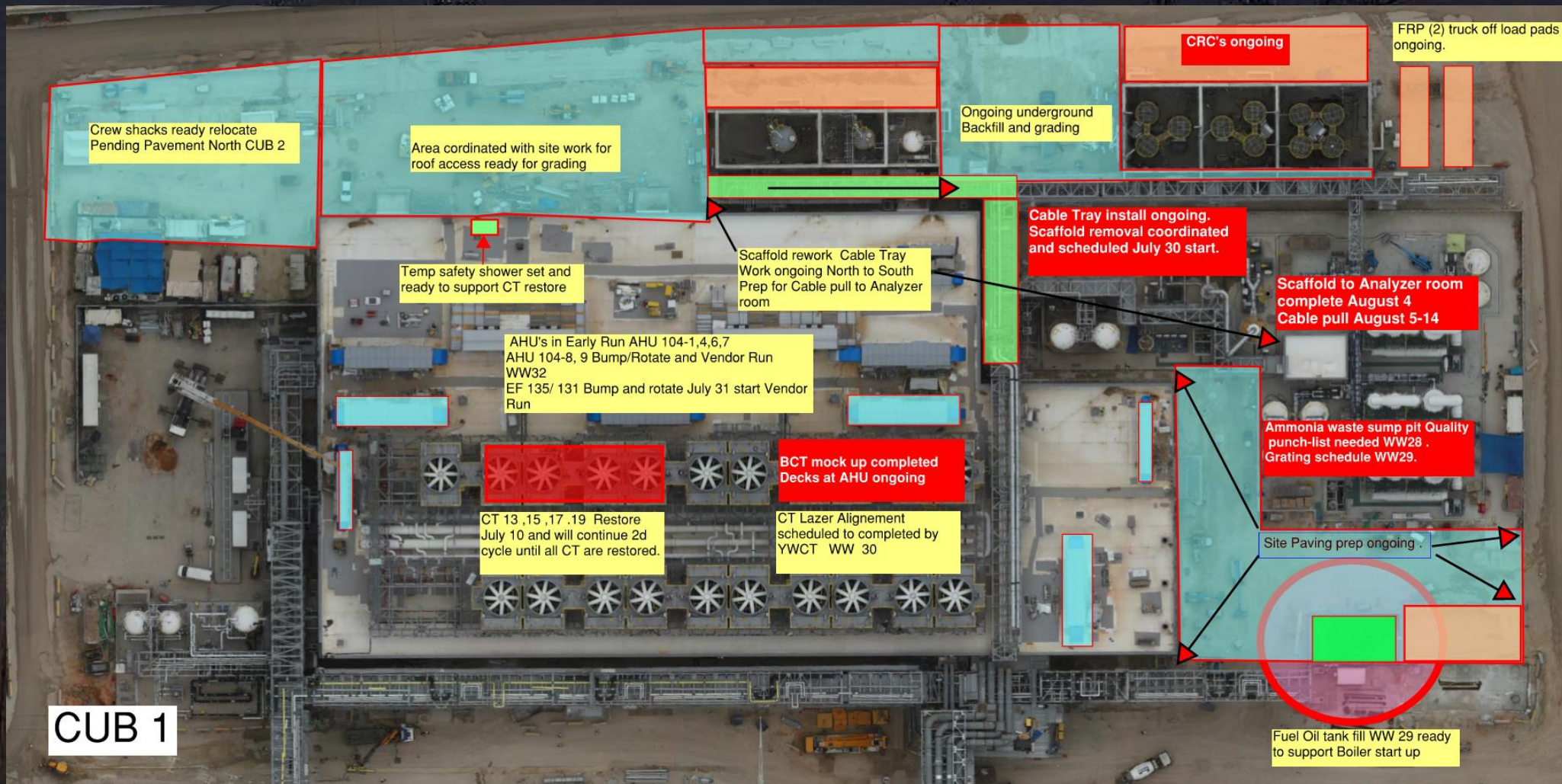
# WJG UTILITY LEVEL BUILD OUT



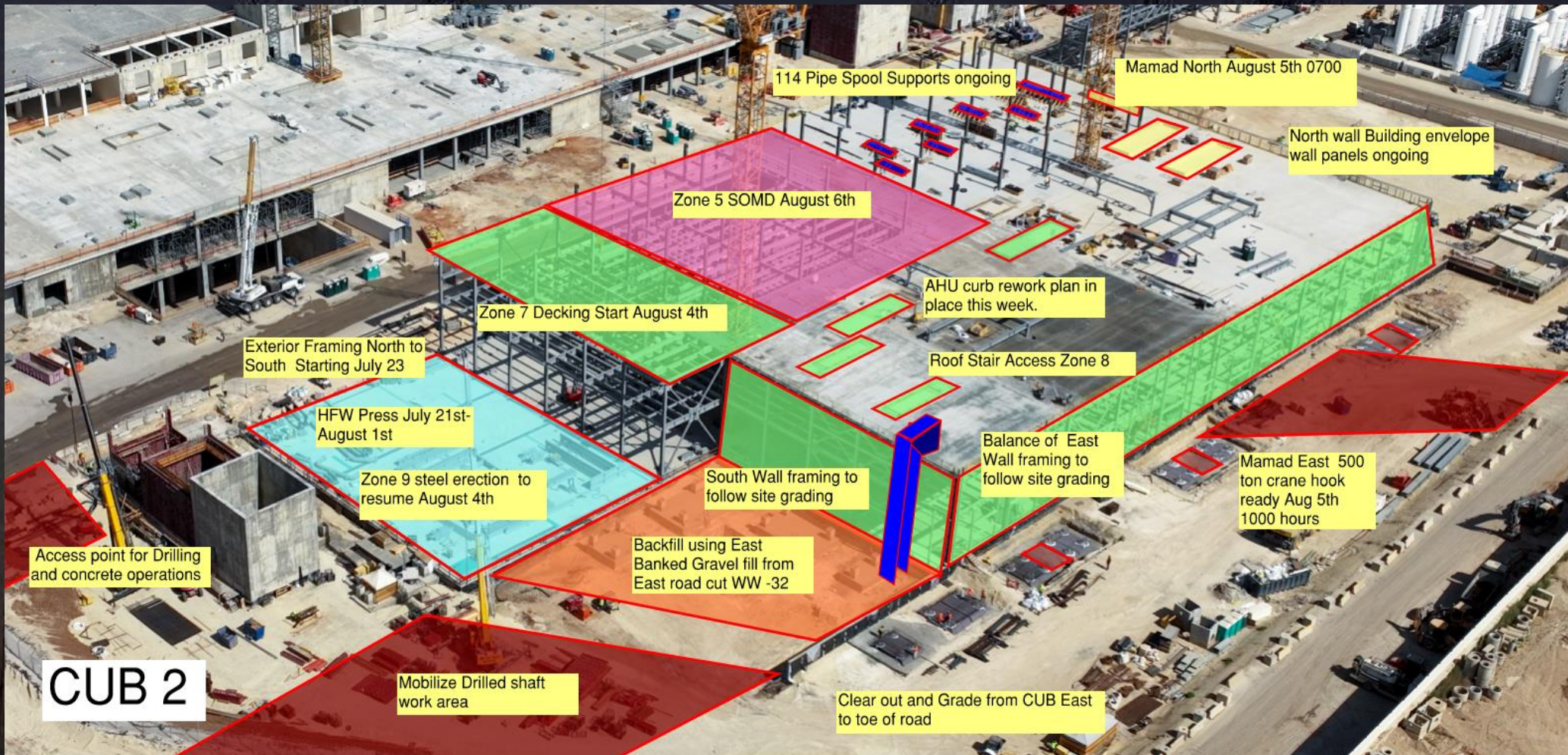




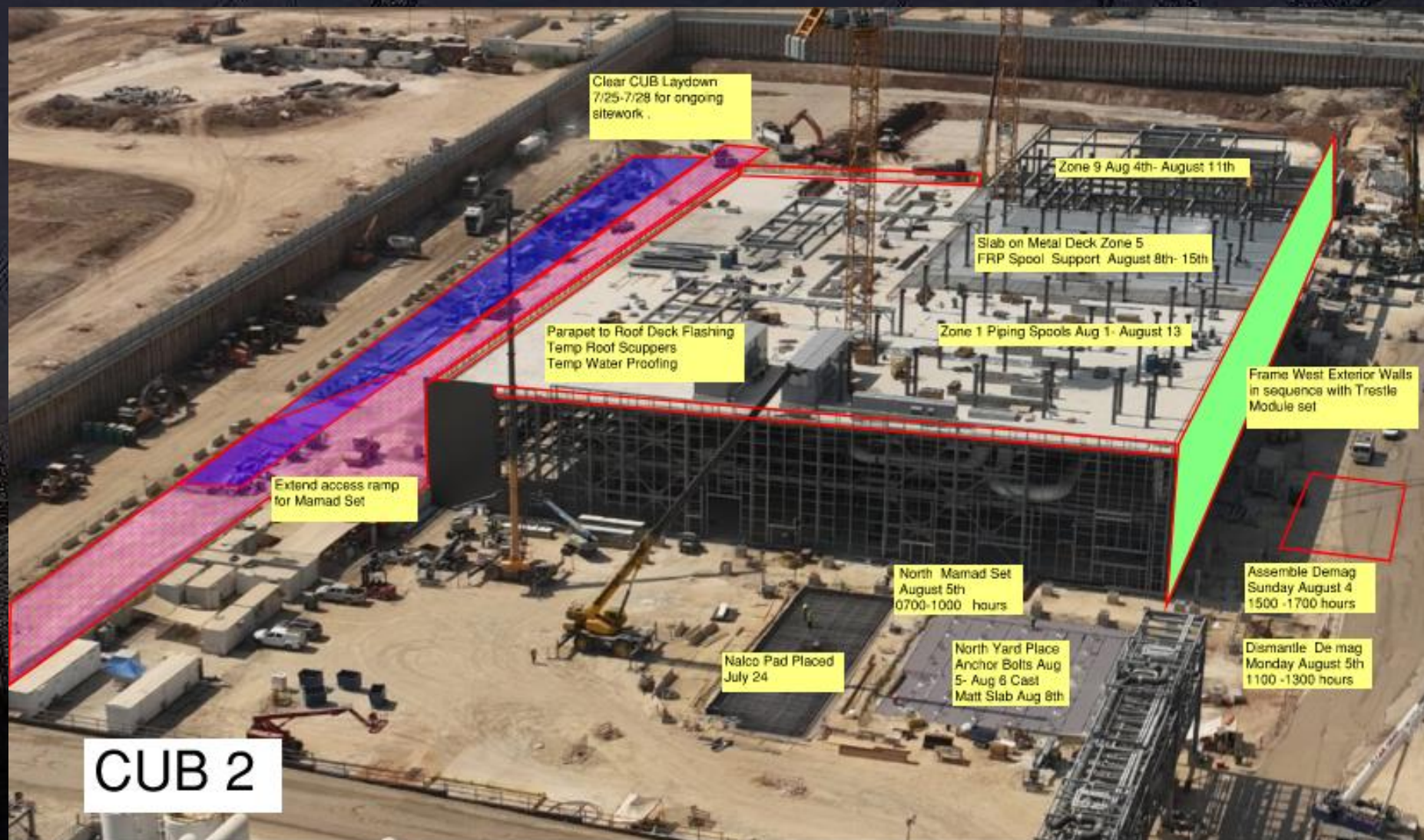




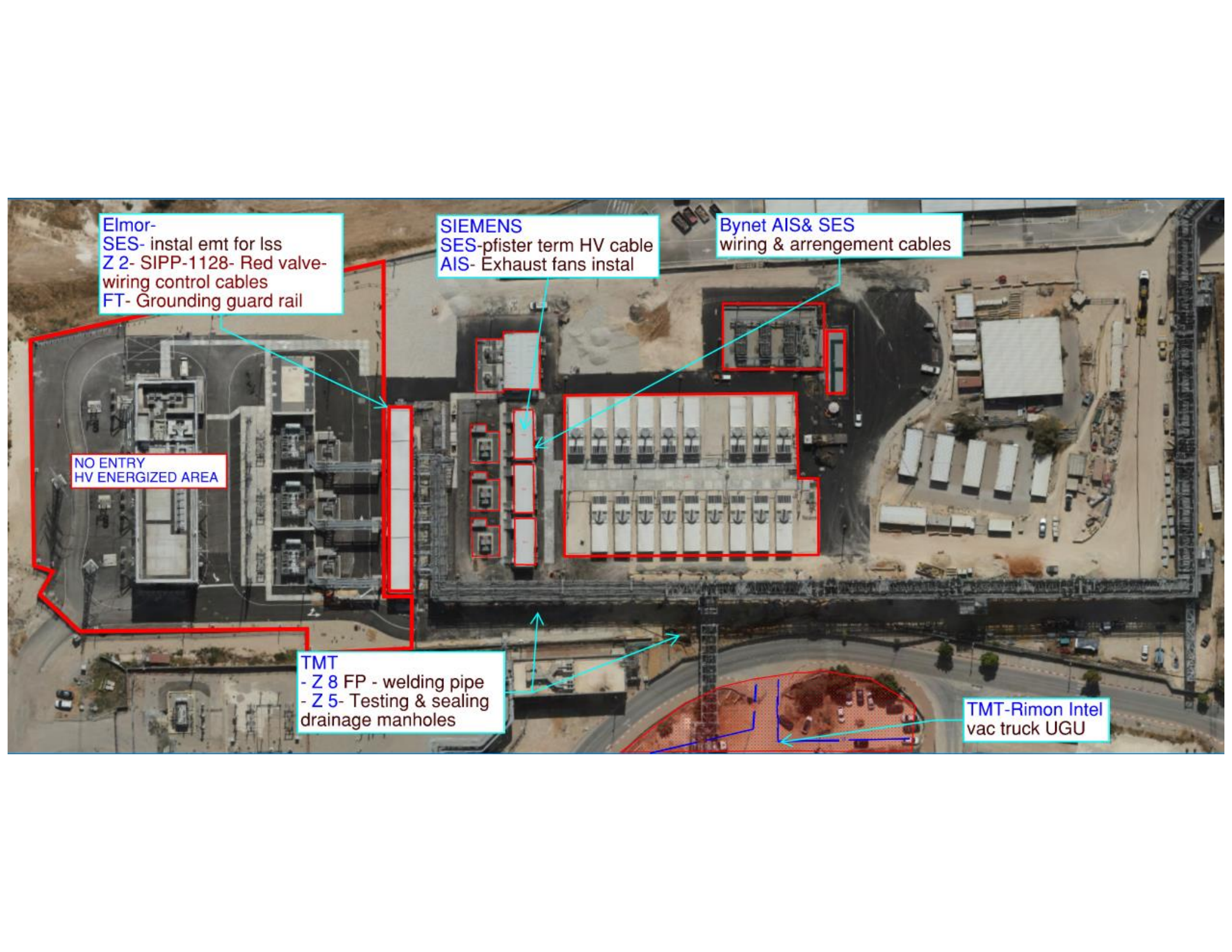












Elmor-  
SES- instal emt for lss  
Z 2- SIPP-1128- Red valve-  
wiring control cables  
FT- Grounding guard rail

NO ENTRY  
HV ENERGIZED AREA

SIEMENS  
SES- pfister term HV cable  
AIS- Exhaust fans instal

Bynet AIS& SES  
wiring & arrangement cables

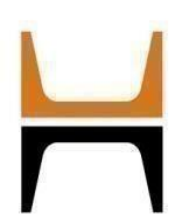
TMT  
- Z 8 FP - welding pipe  
- Z 5- Testing & sealing  
drainage manholes

TMT-Rimon Intel  
vac truck UGU









**HOFFMAN CONSTRUCTION COMPANY**

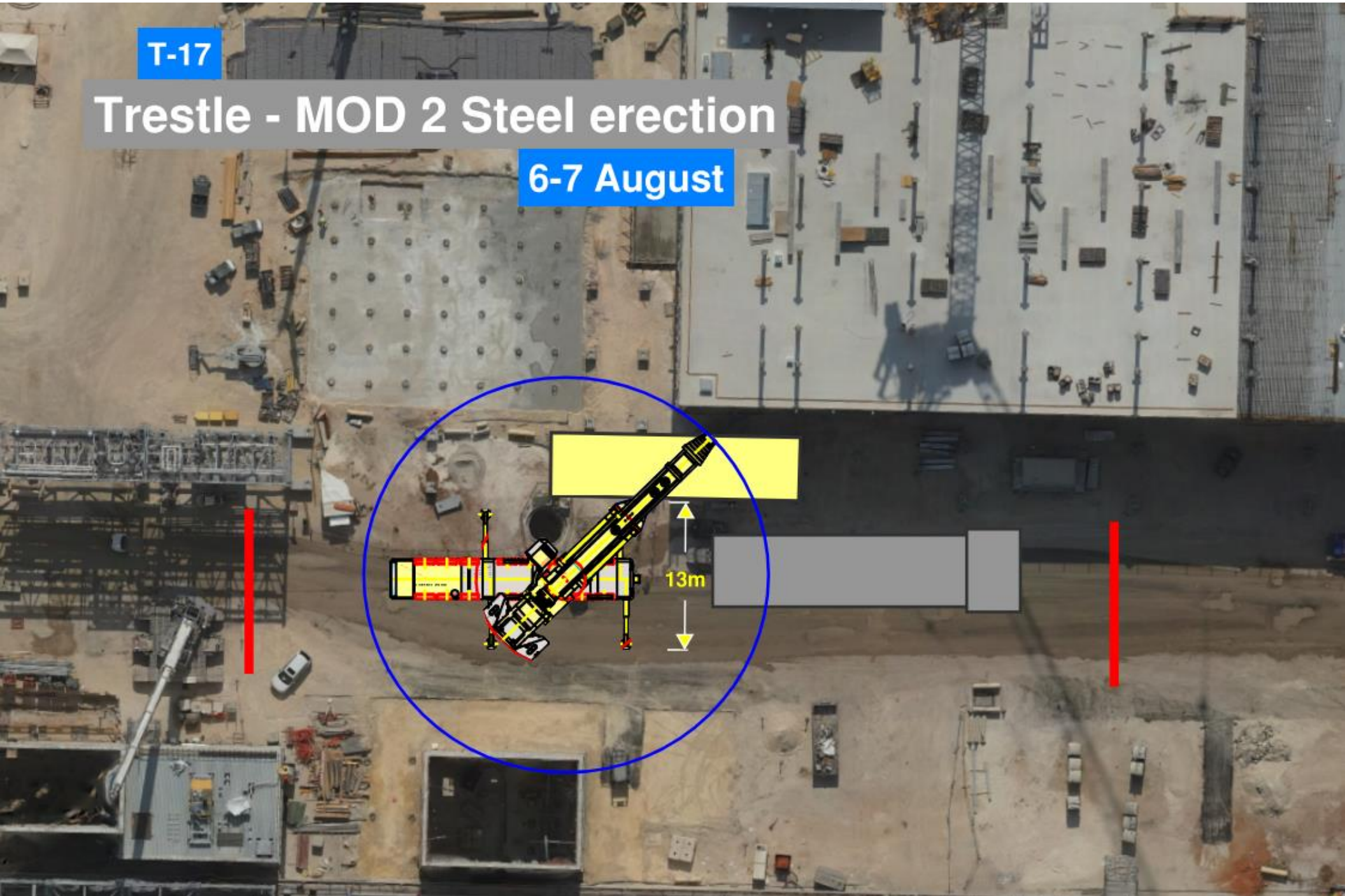


**HOFFMAN**  
Sparrow  

**T-17**

**Trestle - MOD 2 Steel erection**

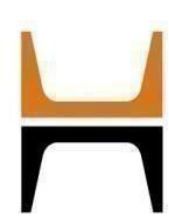
**6-7 August**











**HOFFMAN CONSTRUCTION COMPANY**



**HOFFMAN**  
Sparrow  

**NDT radiography test at BGC vacuum tanks area**

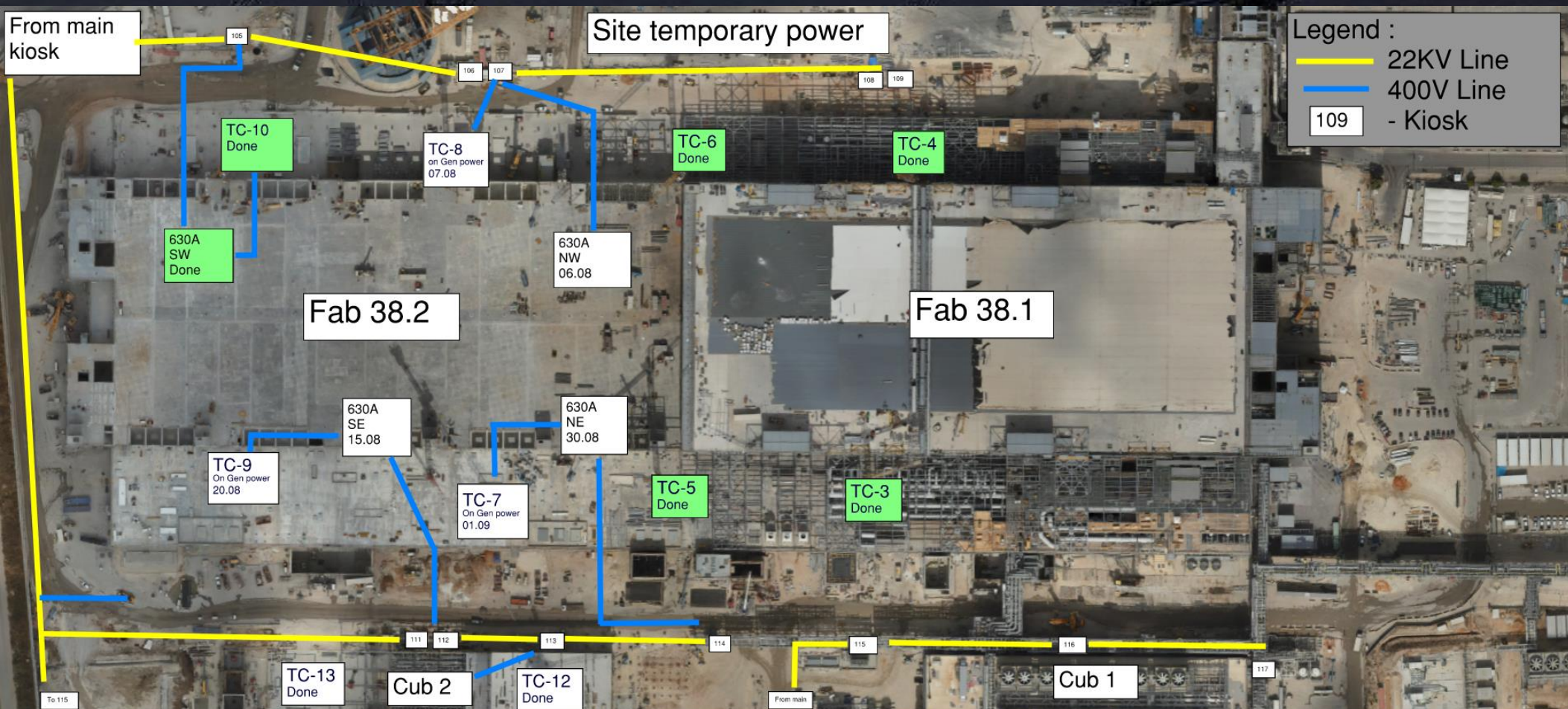
**Spoter**

**Spoter**

**Wednesday night July 28rd at  
22:00 To  
July 29th at 05:00 am.**



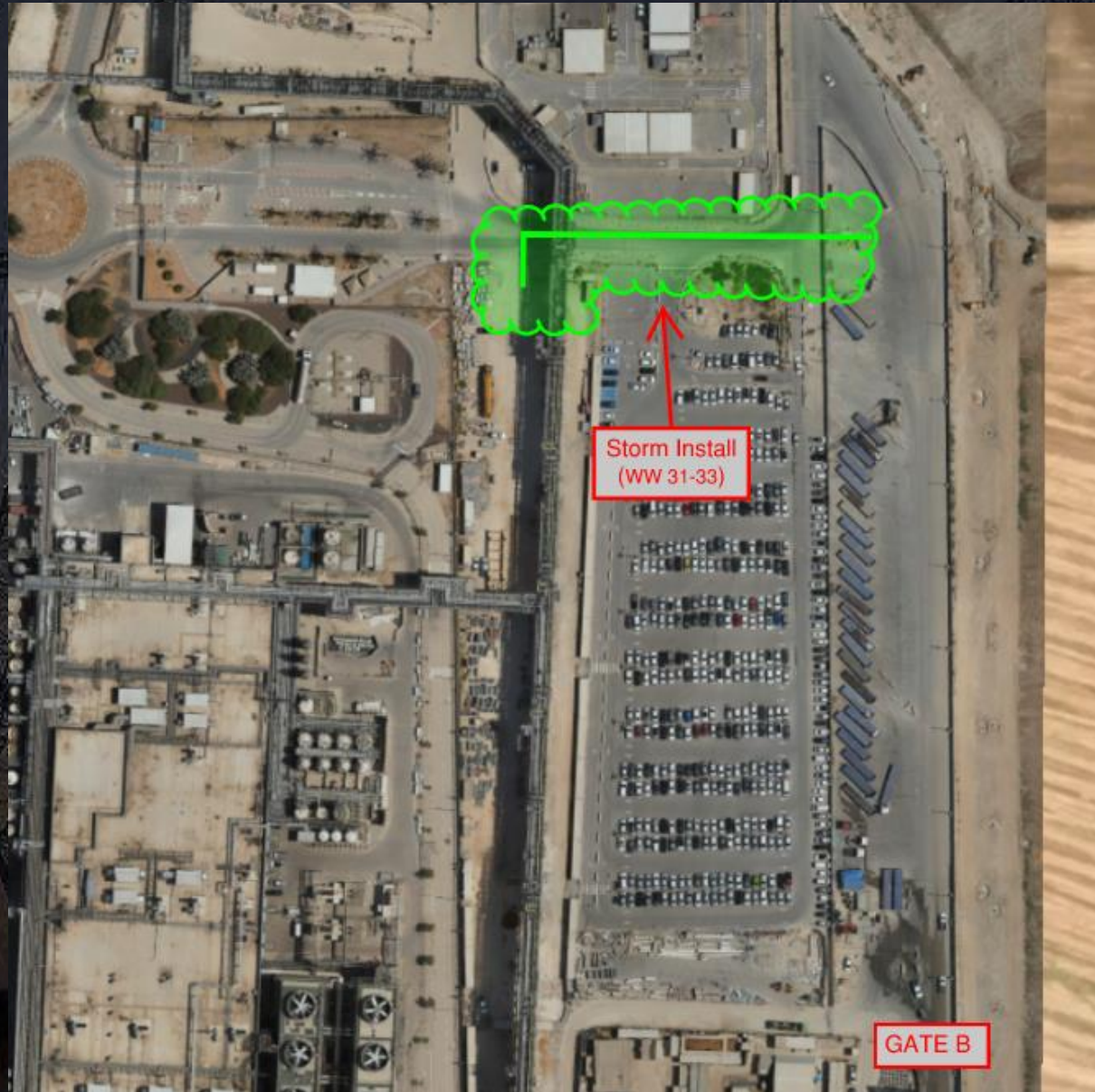
# Daily Coordination Meeting





# Daily Coordination Meeting

Site Logistics  
North Gate B

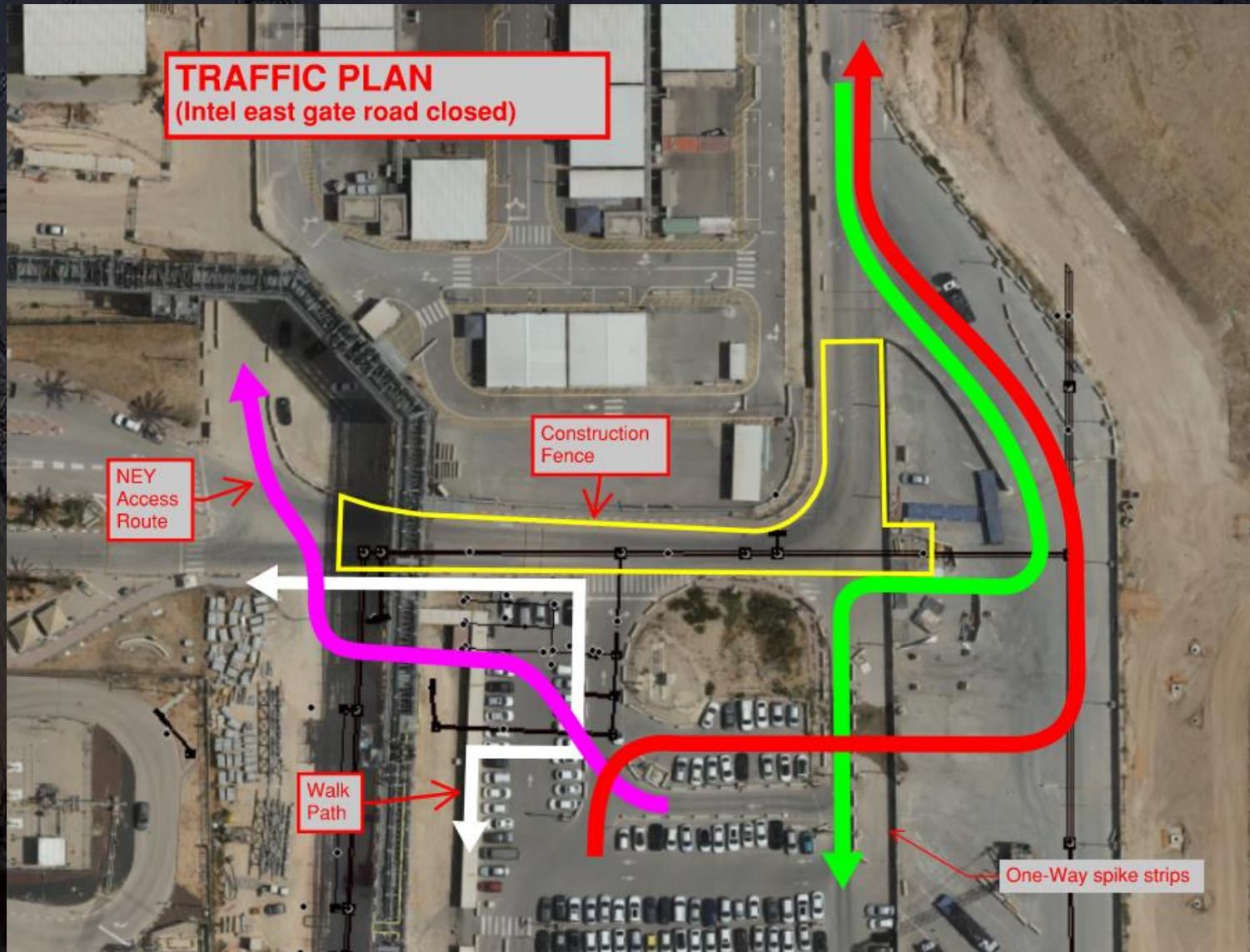




# Daily Coordination Meeting

## Site Logistics

### Traffic Plan

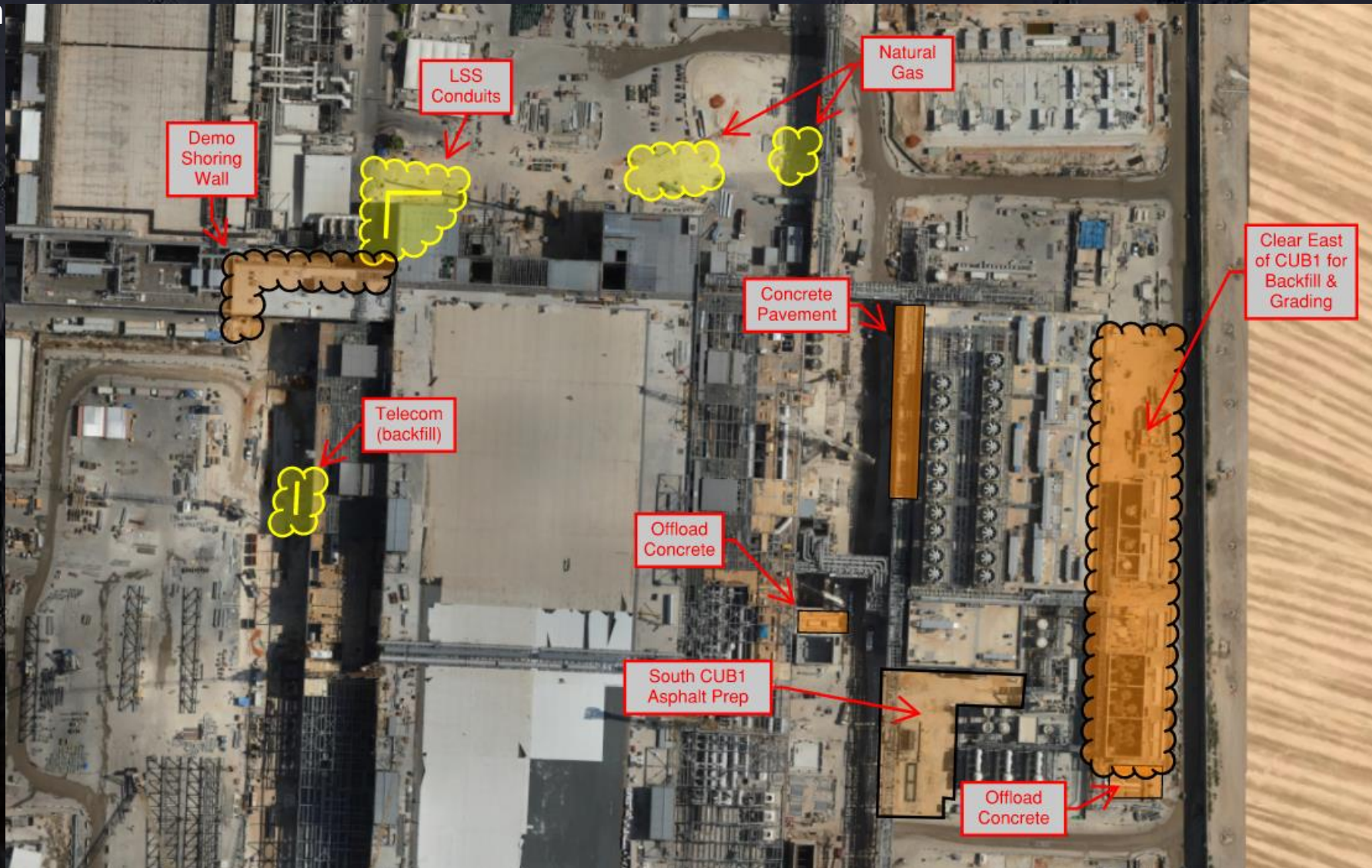




# Daily Coordination Meeting

Site Logistics

North





# Daily Coordination Meeting

Site Logistics

South







**HOFFMAN CONSTRUCTION COMPANY**



# Daily Coordination Meeting

Site Logistics

SW Parking

Sanitary







# Daily Coordination Meeting

Site Logistics

SW Parking

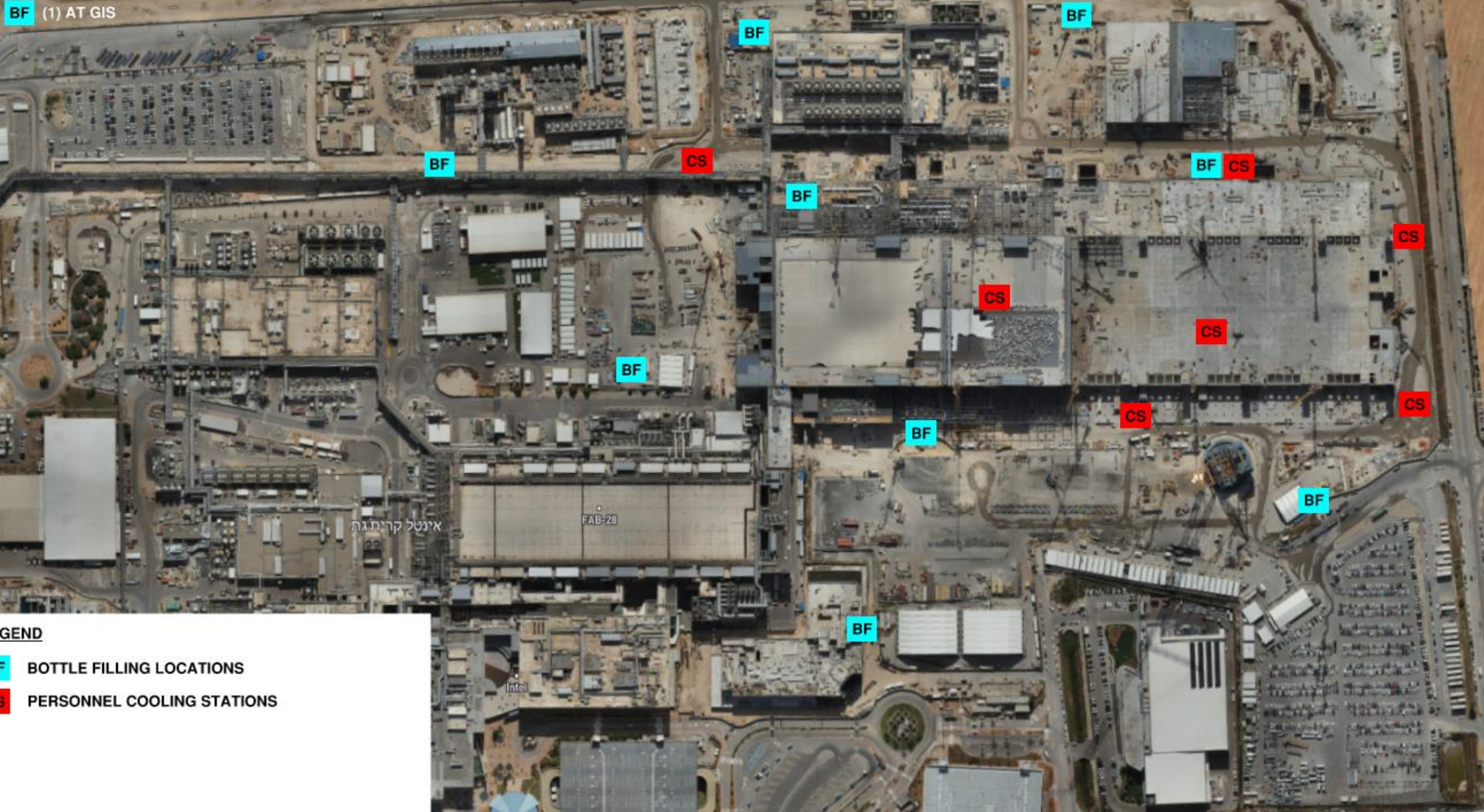




# Daily Coordination Meeting

## WATER BOTTLE FILLING & PERSONNEL COOLING STATIONS

BF (1) AT GIS





## Commissioning

### WW30

TCC Predicted: 105 (93 past due)

TCC Completed: **123**

Delta: **+18** (-75 total)

CCC Predicted: **51** (8 past due)

CCC Completed: **37**

Delta: **-14** (-22 total)

GT Predicted: **119** (24 past due)

GT Completed: **41**

Delta: **-78** (-102 total)







# Both Feet on the Floor of MEWPs

- As access to our WAH activities becomes more complex, we are seeing an increase in employees elevating themselves above guardrails to access their work.
- Whether we are working near an MEWP guardrail, a scaffold guardrail, or leading edge guardrails- we cannot elevate ourselves above that guardrail without additional fall protection measures.
- It is NEVER permitted to stand on the toe board, mid-rail, or top rail of any guardrail system as it is not an appropriate standing surface for work to take place.
- If a person has appropriate additional fall protection means, an approved plan, and an appropriate work surface- we can assess if elevating ourselves above the guardrail can be done safely.



# Heat Index- July 29<sup>th</sup>

	temperature (°F)															
	80	82	84	86	88	90	92	94	96	98	100	102	104	106	108	110
40	80	81	83	85	88	91	94	97	101	105	109	114	119	124	130	136
45	80	82	84	87	89	93	96	100	104	109	114	119	124	130	137	
50	81	83	85	88	91	95	99	103	108	113	118	124	131	137		
55	81	84	86	89	93	97	101	106	112	117	124	130	137			
60	82	84	88	91	95	100	105	110	116	123	129	137				
65	82	85	89	93	98	103	108	114	121	128	136					
70	83	86	90	95	100	105	112	119	126	134						
75	84	88	92	97	103	109	116	124	132							
80	84	89	94	100	106	113	121	129								
85	85	90	96	102	110	117	126	135								
90	86	91	98	105	113	122	131									
95	86	93	100	108	117	127										
100	87	95	103	112	121	132										

 Caution
  Extreme Caution
  Danger
  Extreme Danger

## Extreme Caution

- Ensuring water and shaded areas available
- Acclimating workers
- Emergency planning and response
- Training workers and supervisors on the signs of heat stress and preventative measures
- Modified work schedules and/or rotating out workers
- Monitoring of workers for signs of heat stress



# Daily Coordination Meeting



14:00 Sign In