

# Daily Coordination Meeting



# Daily Coordination Meeting

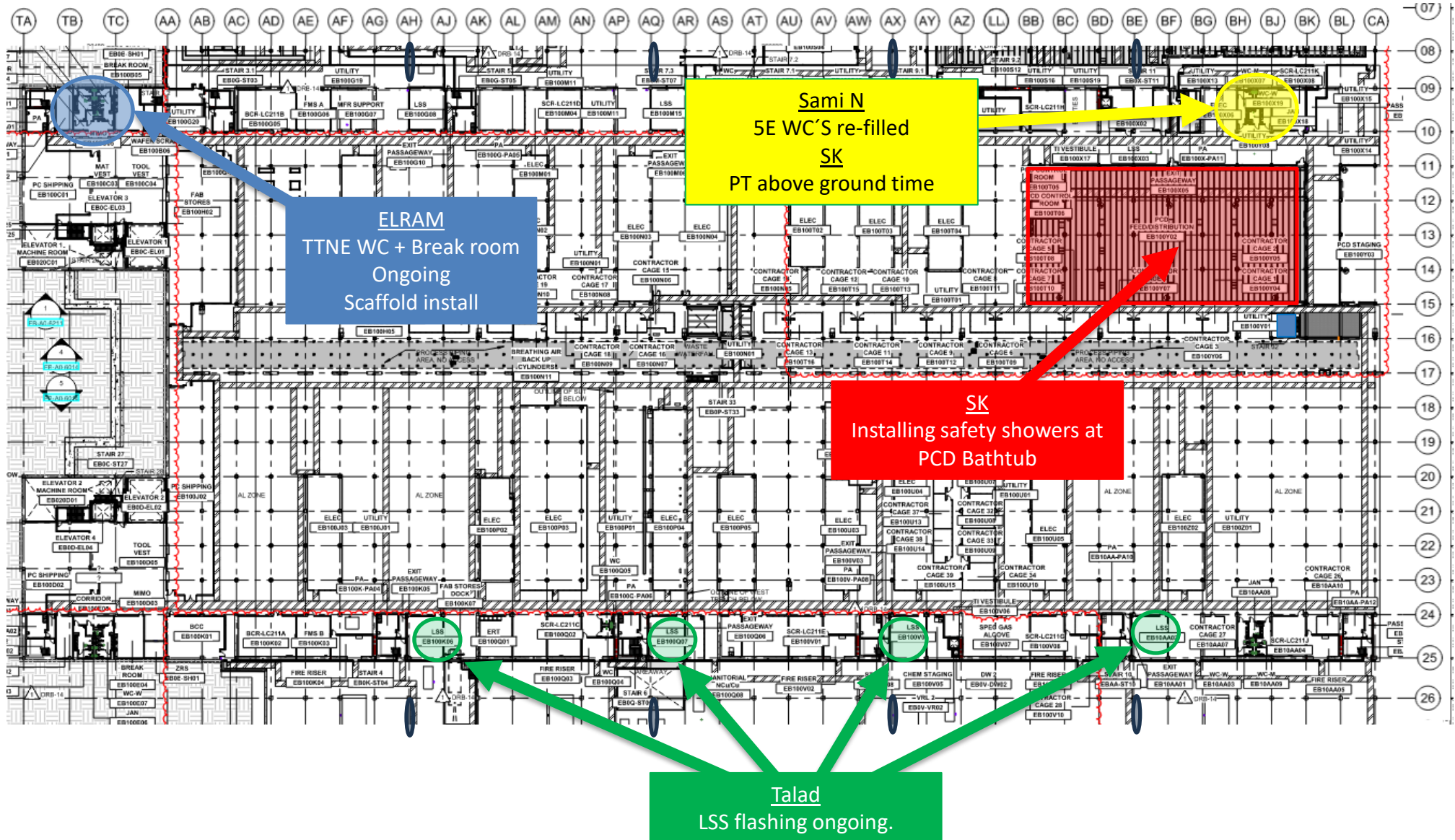
## General Topics:

- Hot weather, drink plenty of water.
- Physical drivers license with operator and spotter of MEWP.
- Good comms between operator and spotter.
- Patience as we work through the process of MEWP approval.



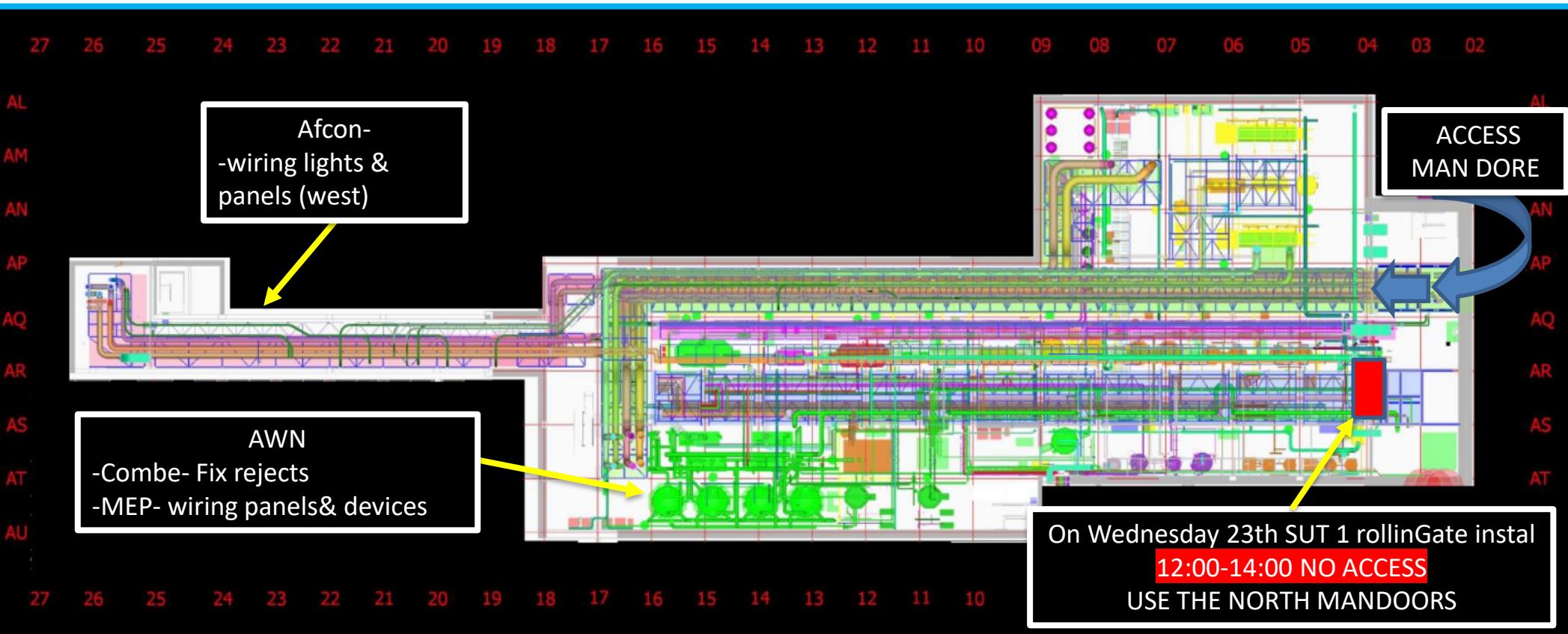


UTILITY LEVEL MOD1





## SUT 38.1 LEVEL





## SUT 38.1 LEVEL – EVACUATE MATERIALS

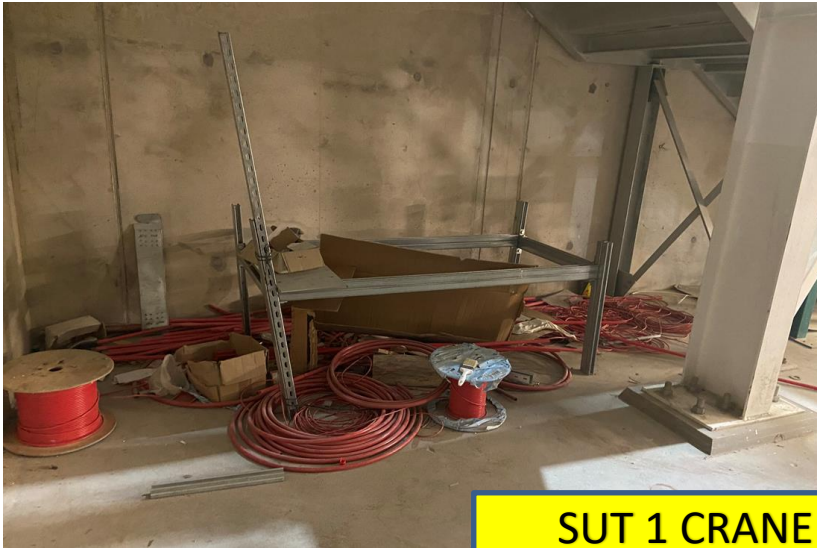
DEDICATED crane for subs to  
evacuate materials  
Wednesday 09:00-13:00

### EVERY SUBCONTRACTOR SHOULD:

1. BARRICADE MATERIALS 360
2. SINAGE EACH TOOLBOX,  
PALLET, RACKS...COMPANY &  
CONTACT PERSON DETAILES.
3. UNRECOGNIZED MATERIALS  
WILL THROWN TO GARPAGE

ON THURSEDAY 24<sup>th</sup> JS  
EVACUATE UNAPPROVED  
MAYTREALS





**SUT 1 CRANE SCHEDULED for ALL  
SUBCONTRACTORS to evacuate  
materials tomorrow  
Wednesday- 09:00-13:00**





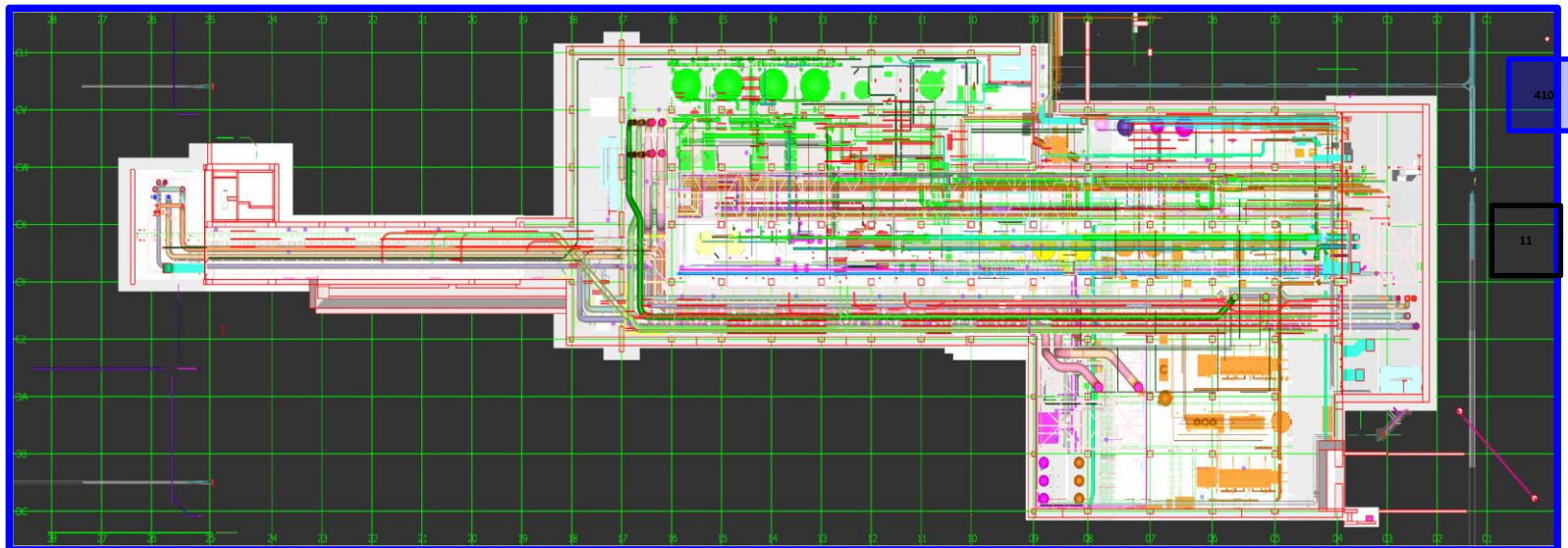


**SUT 1 CRANE SCHEDULED for ALL  
SUBCONTRACTORS to evacuate  
materials tomorrow  
Wednesday- 09:00-13:00**



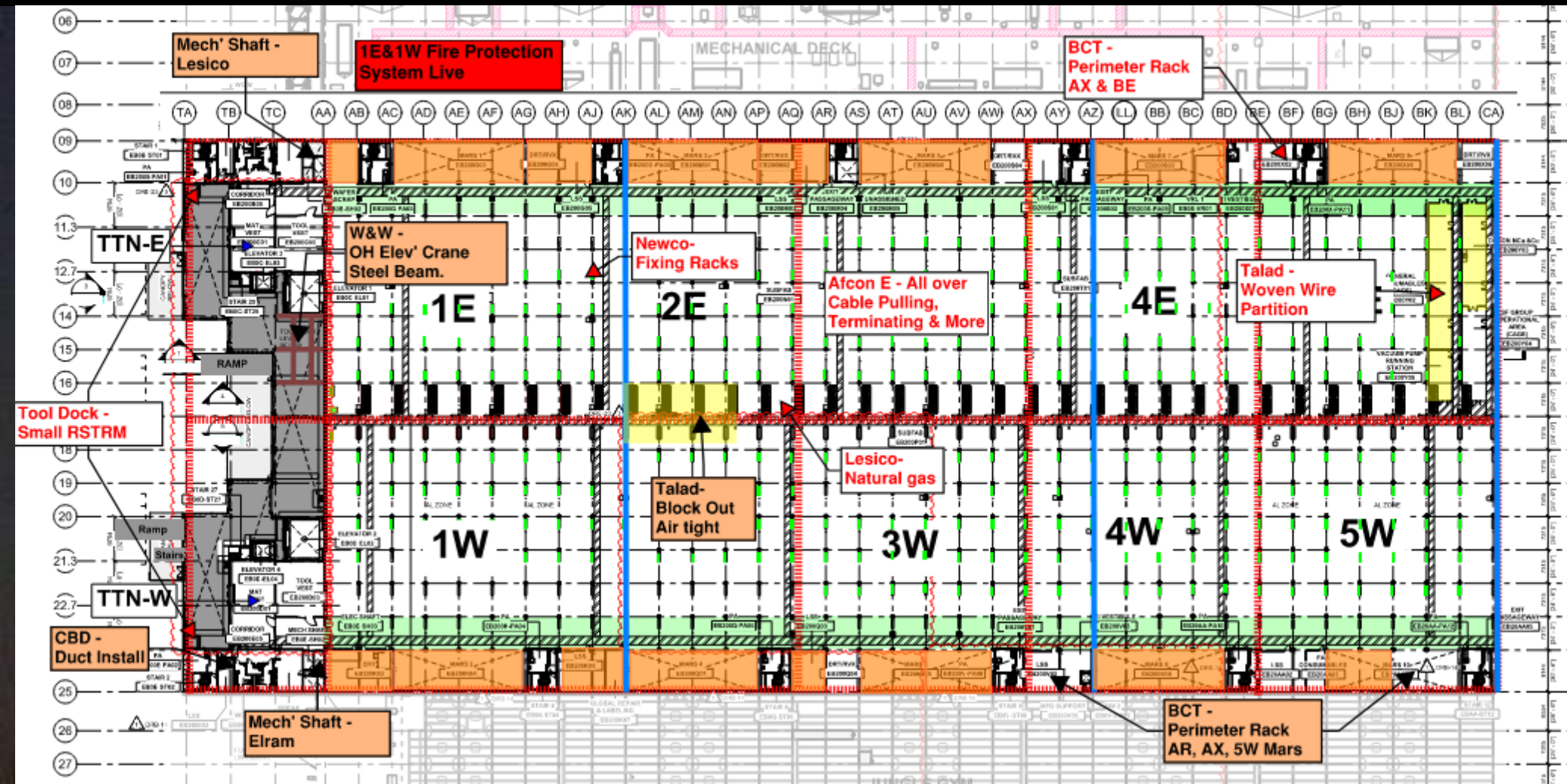
SUT 38.2 LEVEL

EVERY MATERIAL SHOULD BE:  
IN ORDER  
BARRICADED PROPERLY  
SINAGED





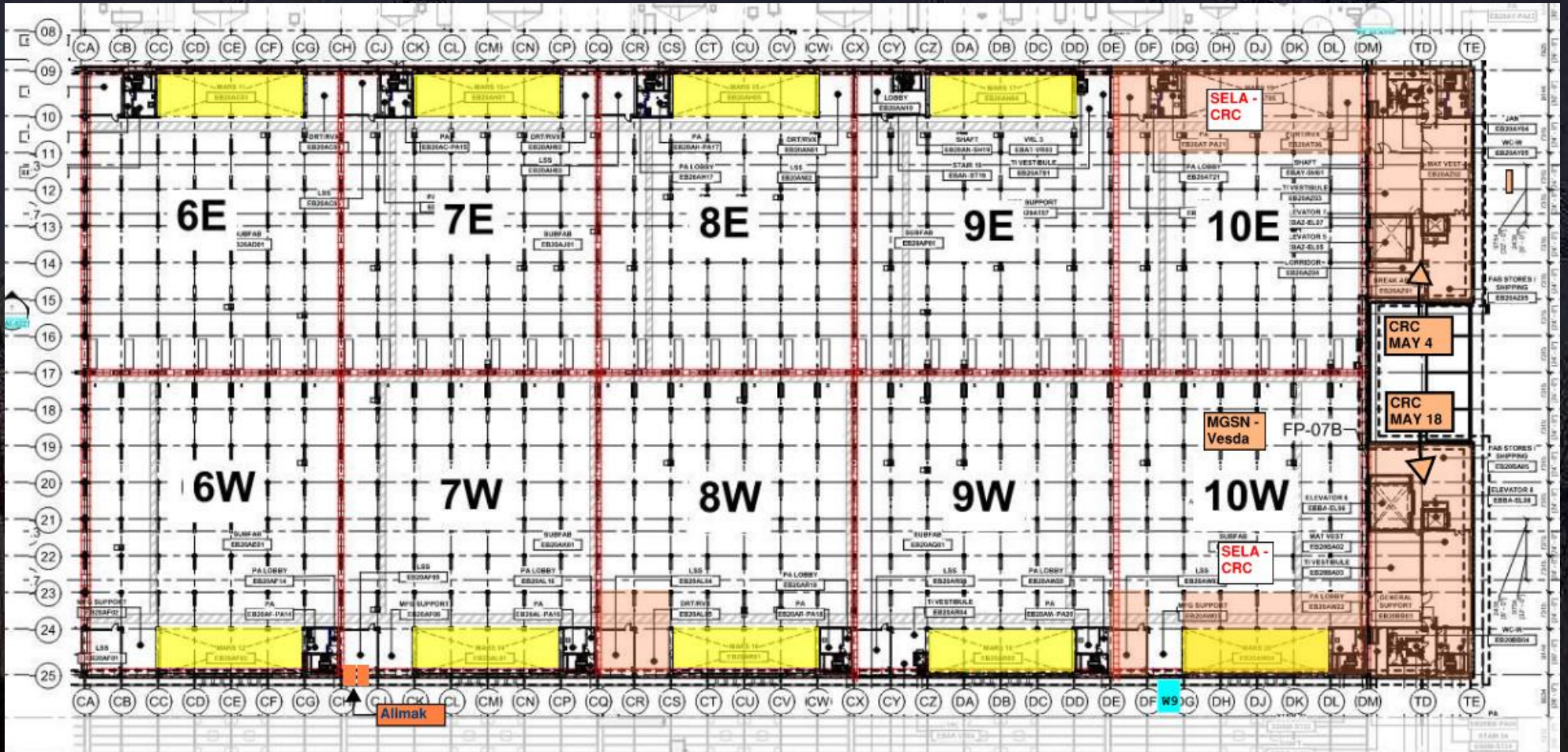
# SUBFAB BUILDOUT MOD 1



[illegible]

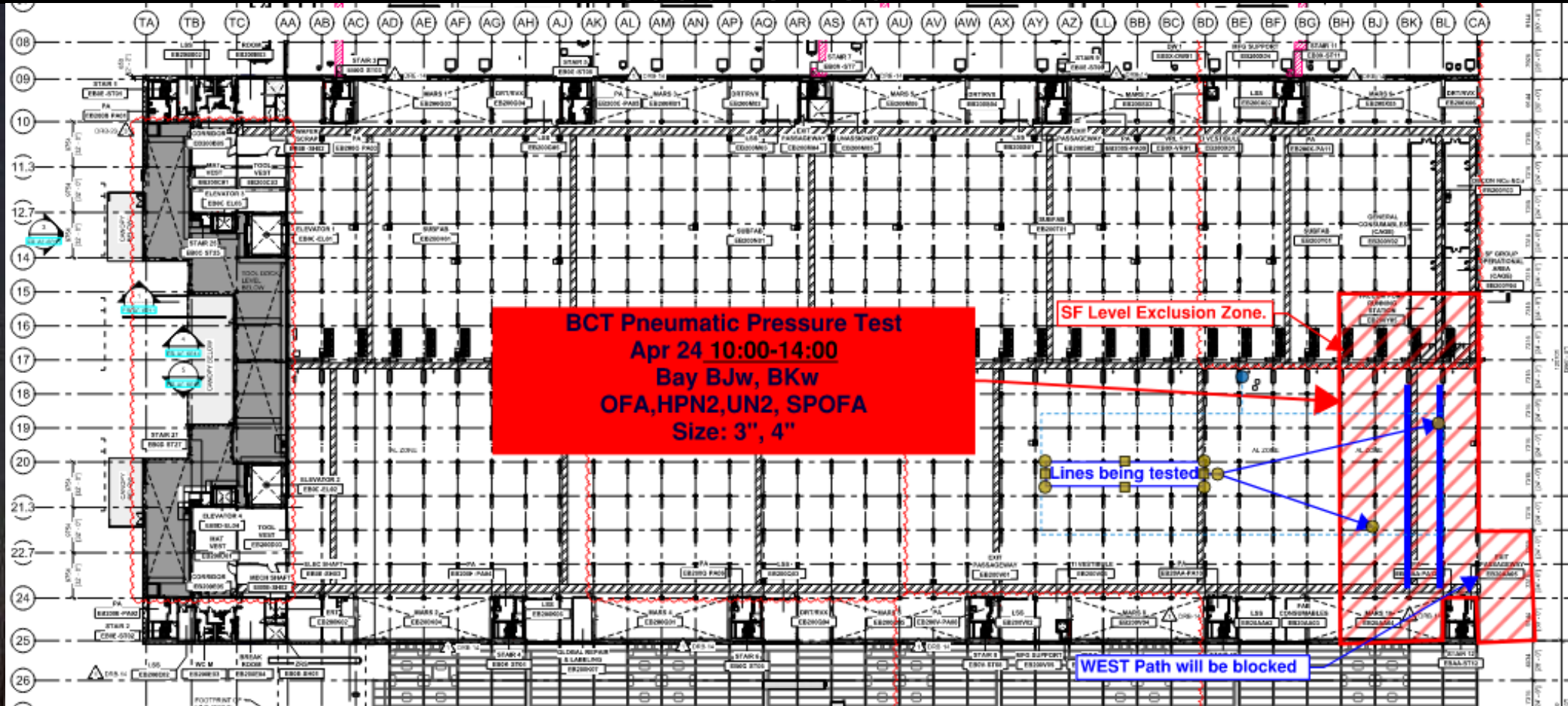


# SUBFAB BUILDOUT MOD 2

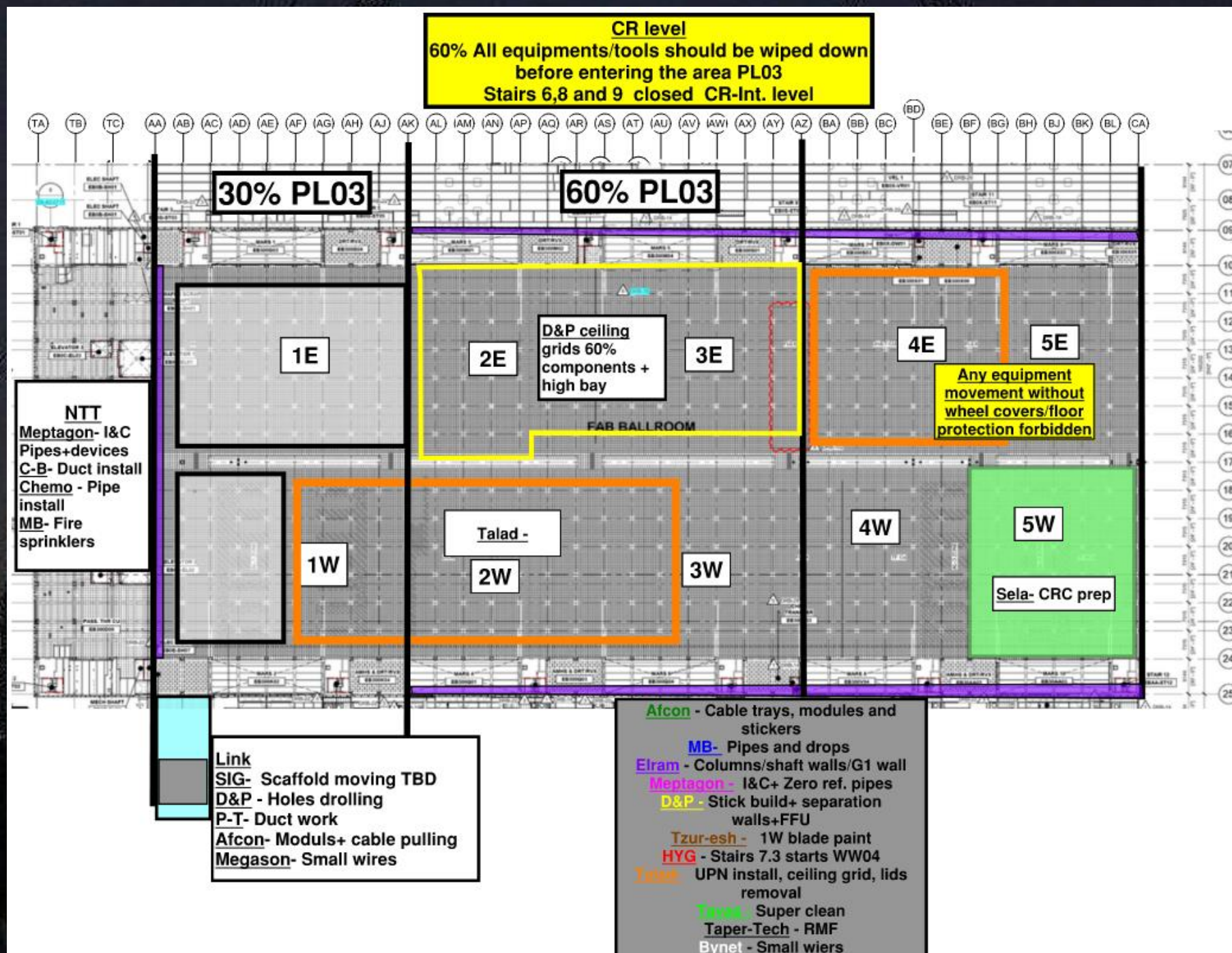


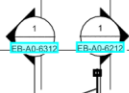


# BCT Pressure Test APR 24









JIB CRANE LIFTING ZONE

**Aifcon** - Cable trays, modules and stickers

**MB** - Fire sprinklers

**Elram** - Gypsum/G1 wall

**Chemo** - Skids and pipes

**SK** - IA pipes

**Tzur-esh** - Paint+ touch ups

**WW** - Cat walk

**RPC** - 4DA/5DA FP

**Tavas** - Super clean

**Bynet** - Communication weirs

**Megasone** - Speakers

**Meptagon** - I&C

**Int. level**

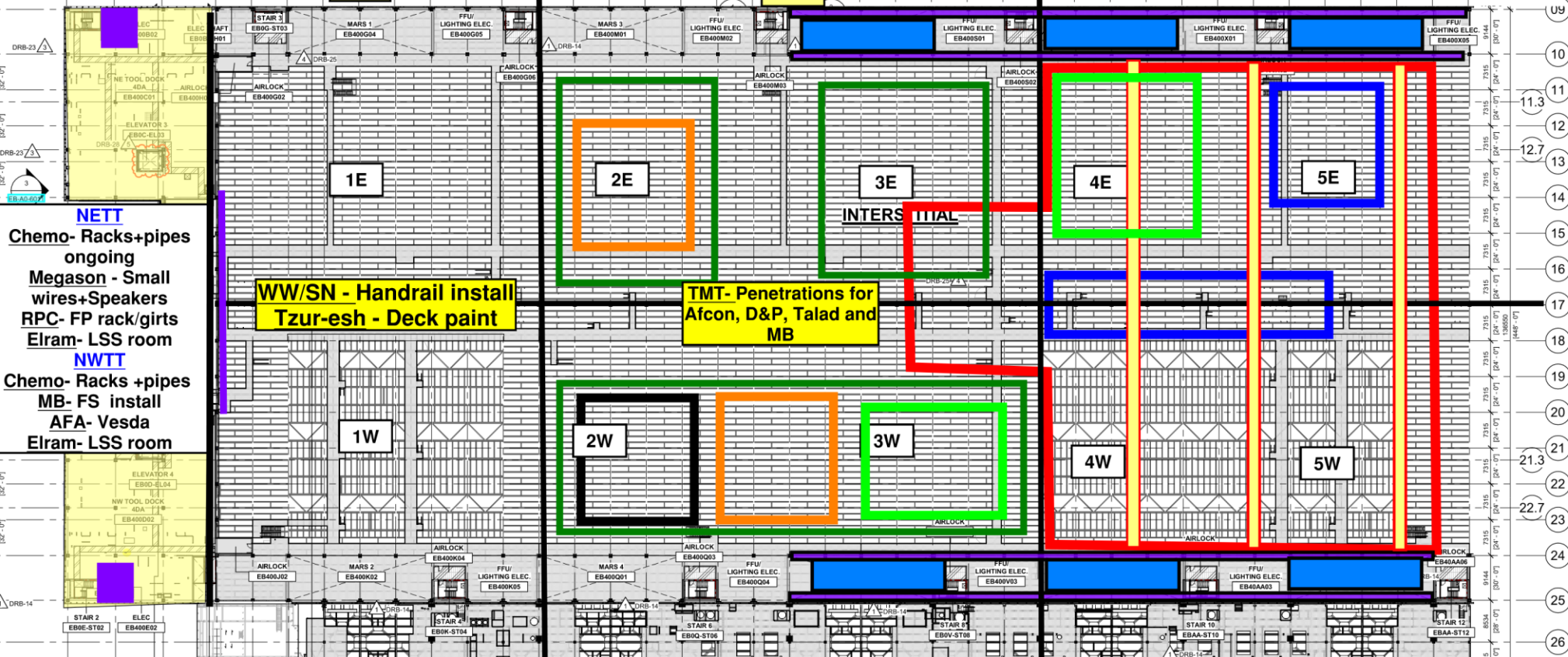
**Walk on FRP is approved.**

**Do not move carts/ stage material without plywood**

TA TB TC AA AB AC AD AE AF AG AH AJ AK AL AM AN AP AQ AR AS AT AU AV AW AX AY AZ BA BB BC BD BE BF BG BH BJ BK BL CA

30%

60%



**NETT**

**Chemo**- Racks+pipes ongoing

**Megasone** - Small wires+Speakers

**RPC** - FP rack/girts

**Elram**- LSS room

**NWTT**

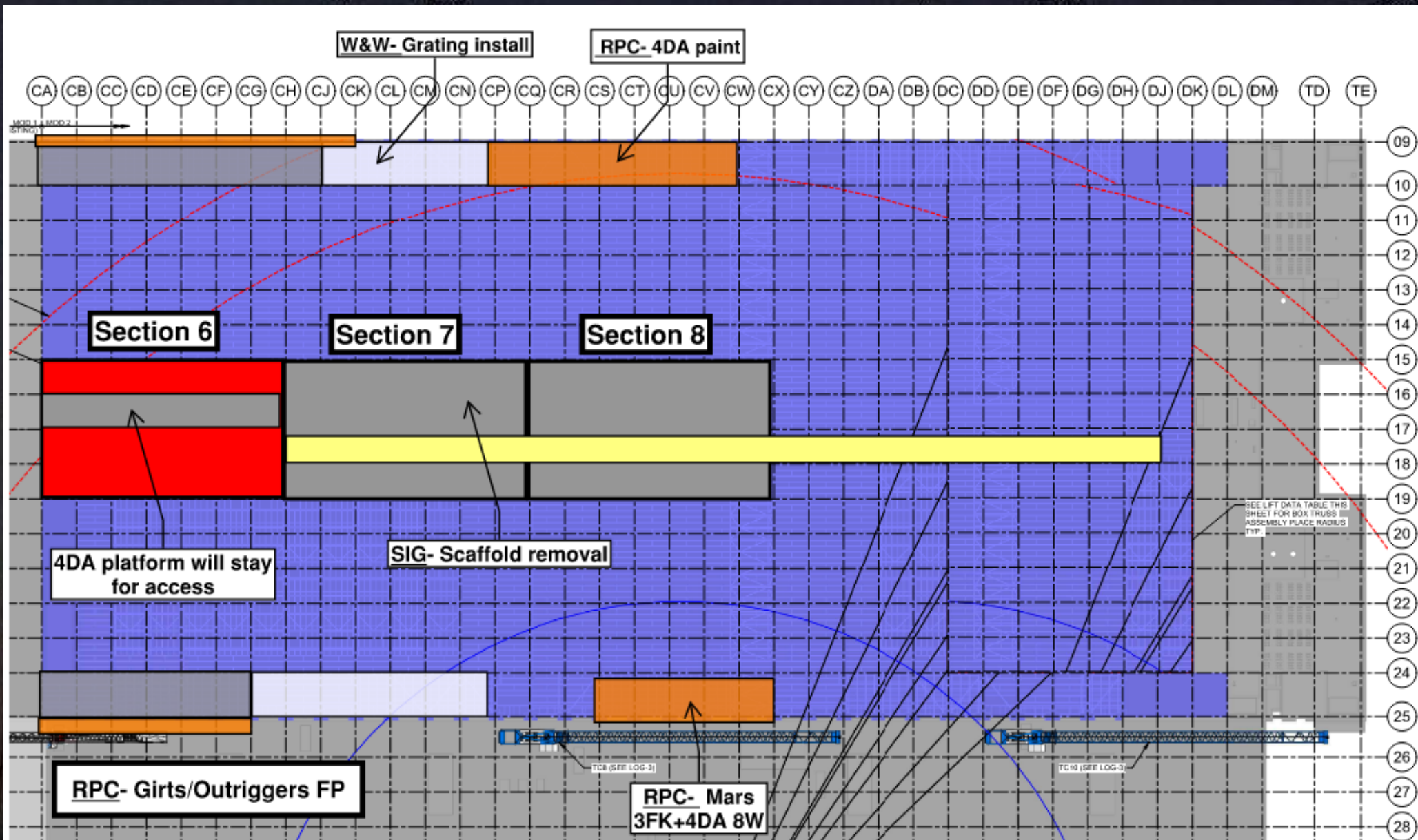
**Chemo**- Racks +pipes

**MB**- FS install

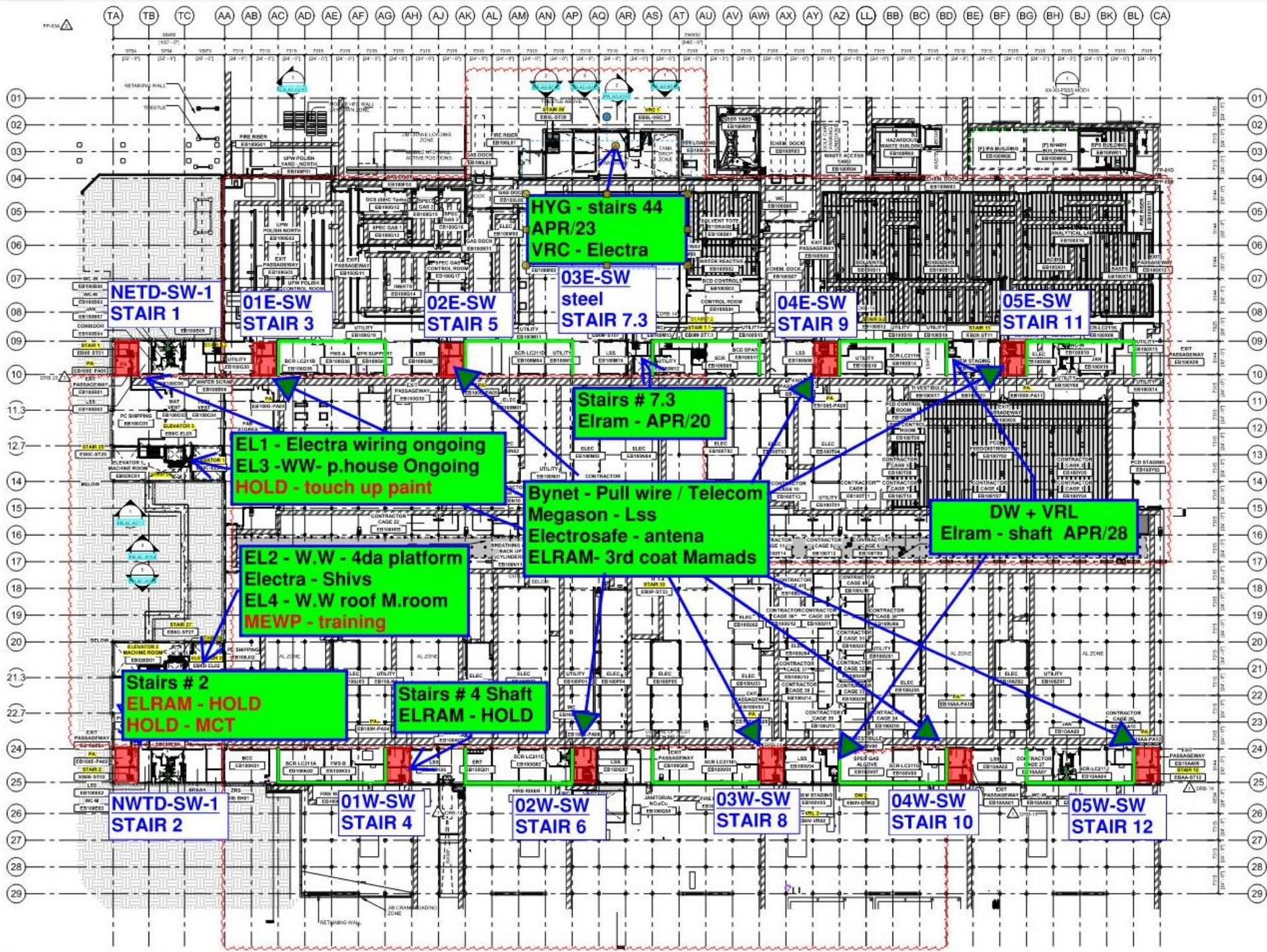
**AFA**- Vesda

**Elram**- LSS room



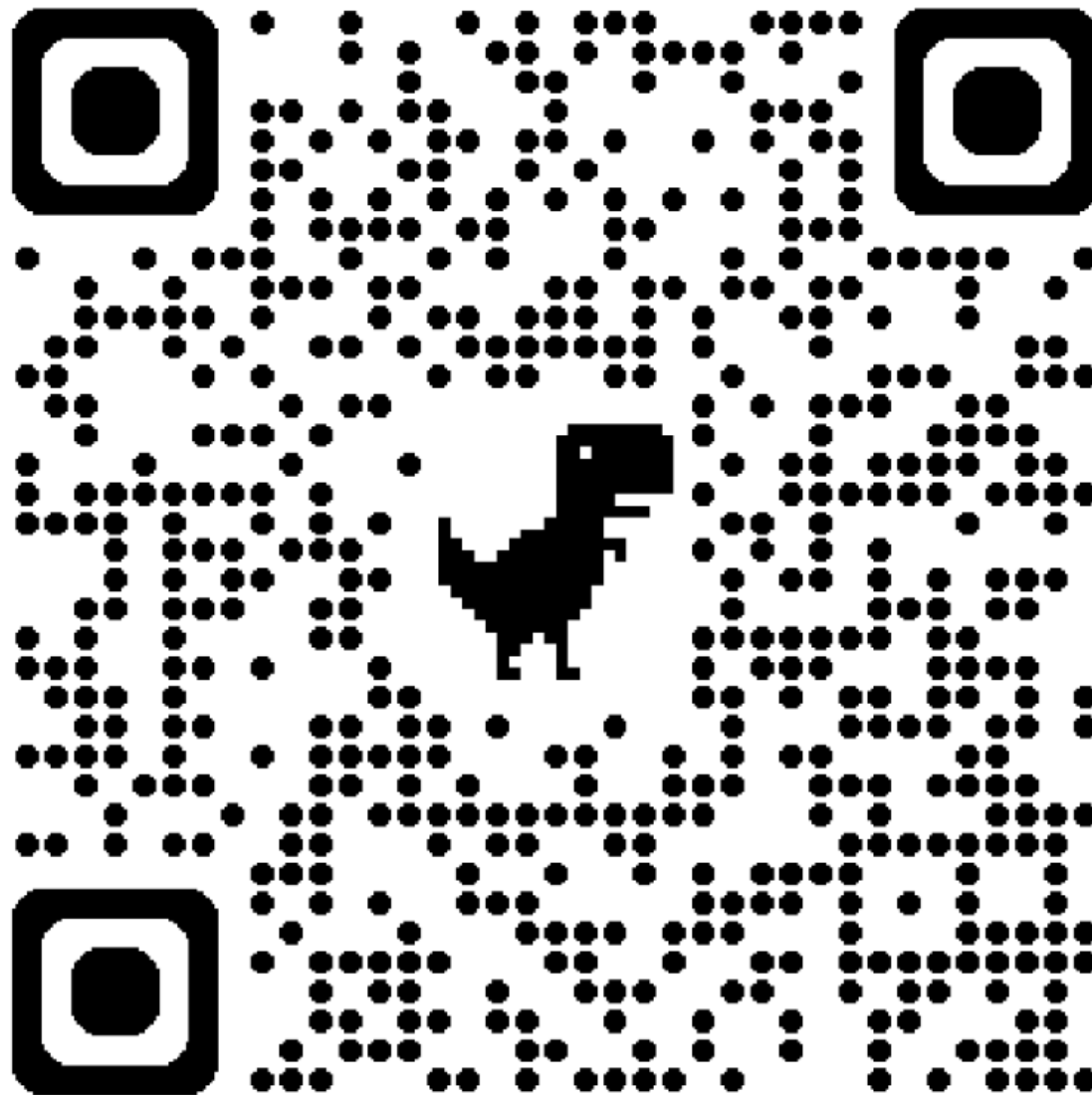




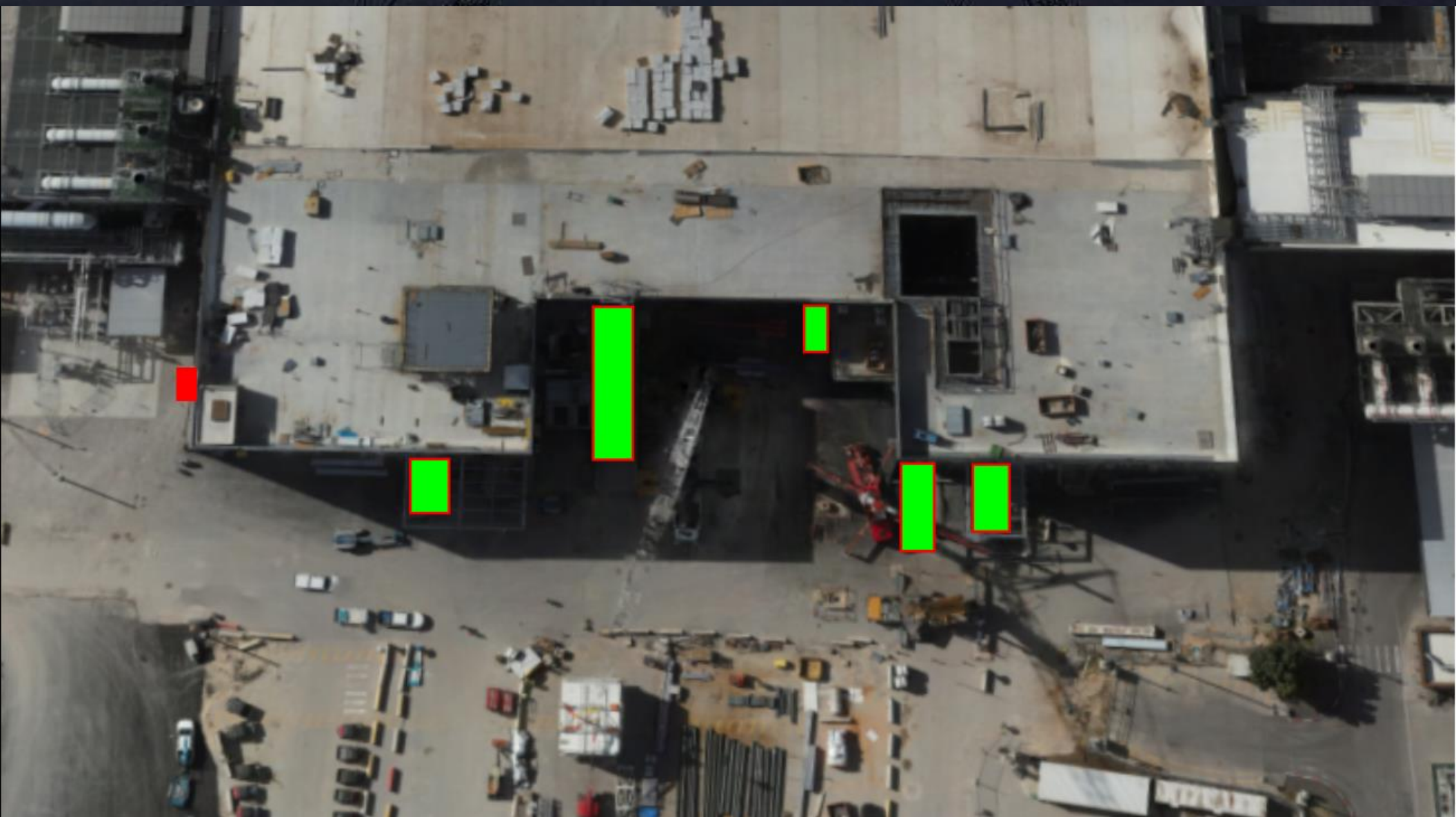




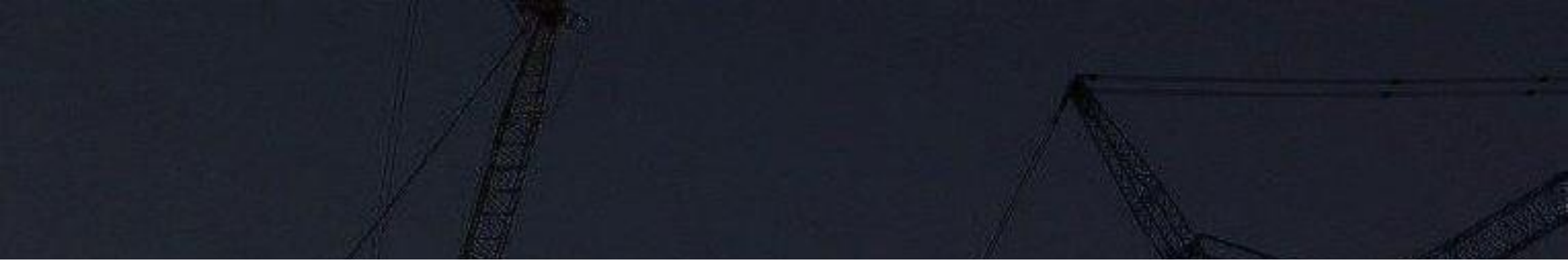
# Request Form



Subcontractor must fill out and submit all required cells in order to get a penetration cut through the siding.

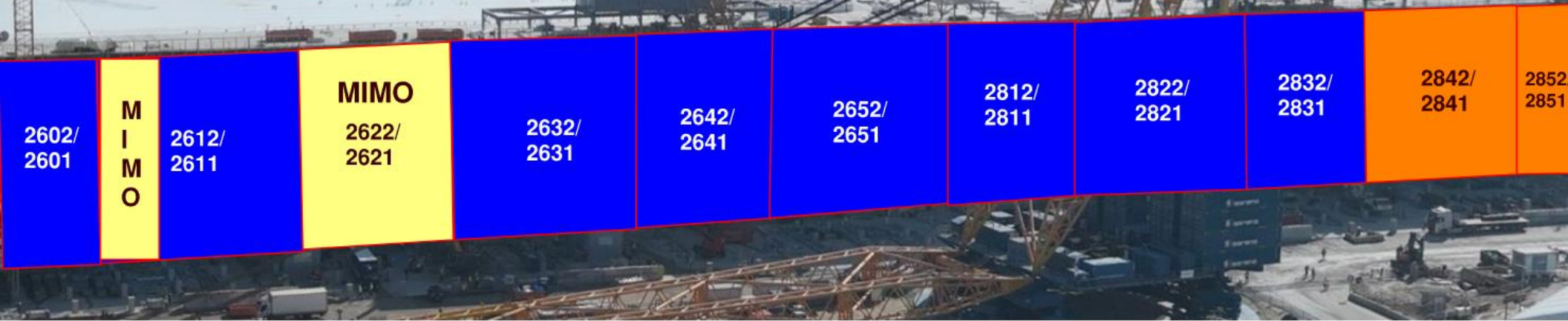






- READY FOR GIRTS 
- INSTALLING GIRTS 
- READY FOR PANELS 
- PANELS INSTALLED 

MOD 2 WESTSIDE GIRTS/SIDING



## MOD 2 EASTSIDE GIRTS/SIDING



2752/ 2751	2742/ 2741	2732/ 2731	2722/ 2721	2712/ 2711	2552/ 2551	2542/ 2541	2532/ 2531	2522/ 2521	2512/ 2511	2502/ 2501
---------------	---------------	---------------	---------------	---------------	---------------	---------------	---------------	---------------	---------------	---------------

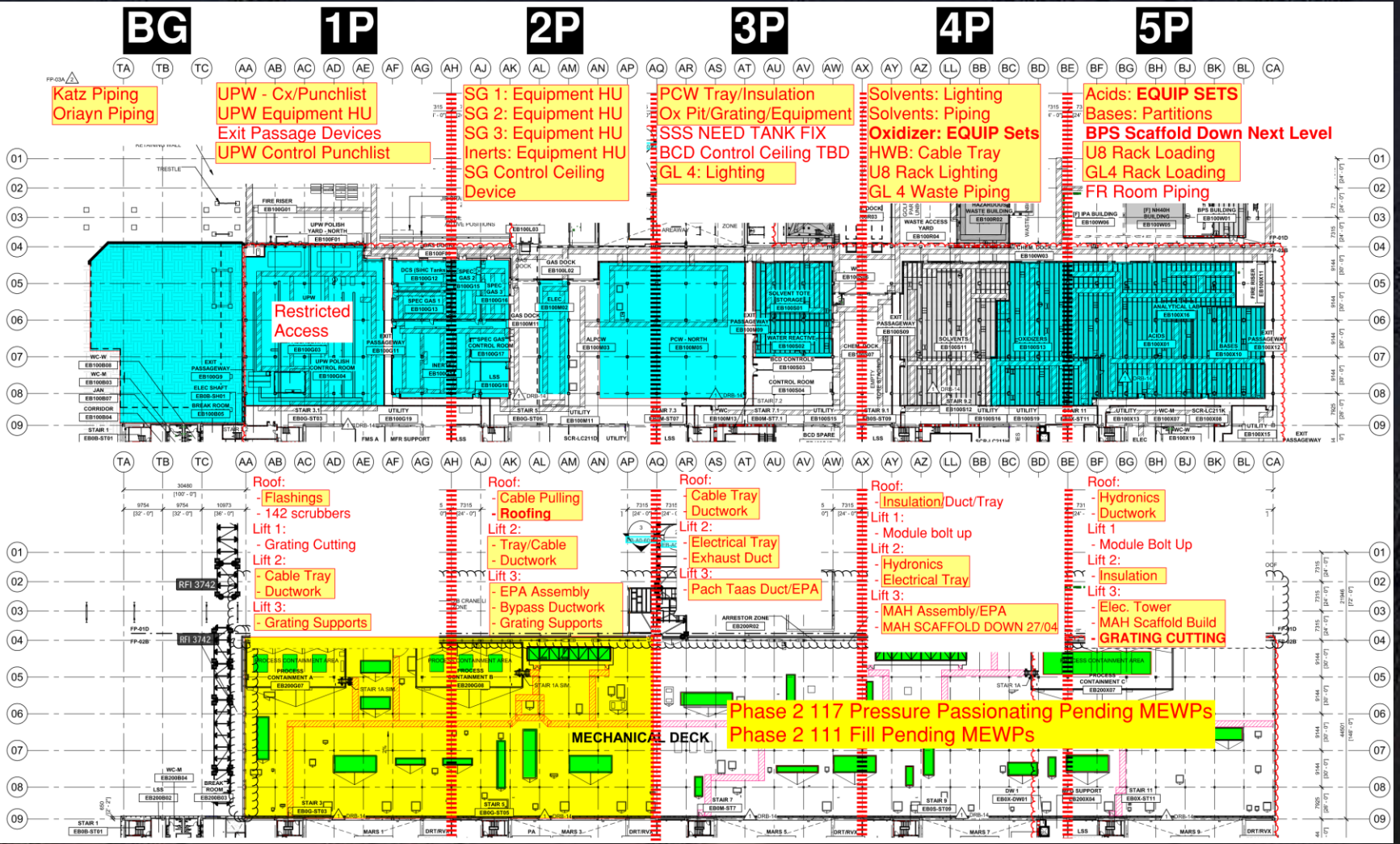
READY FOR GIRTS	
INSTALLING GIRTS	
READY FOR PANELS	
PANELS INSTALLED	



# PSSS.1

Utility Level  
1YA

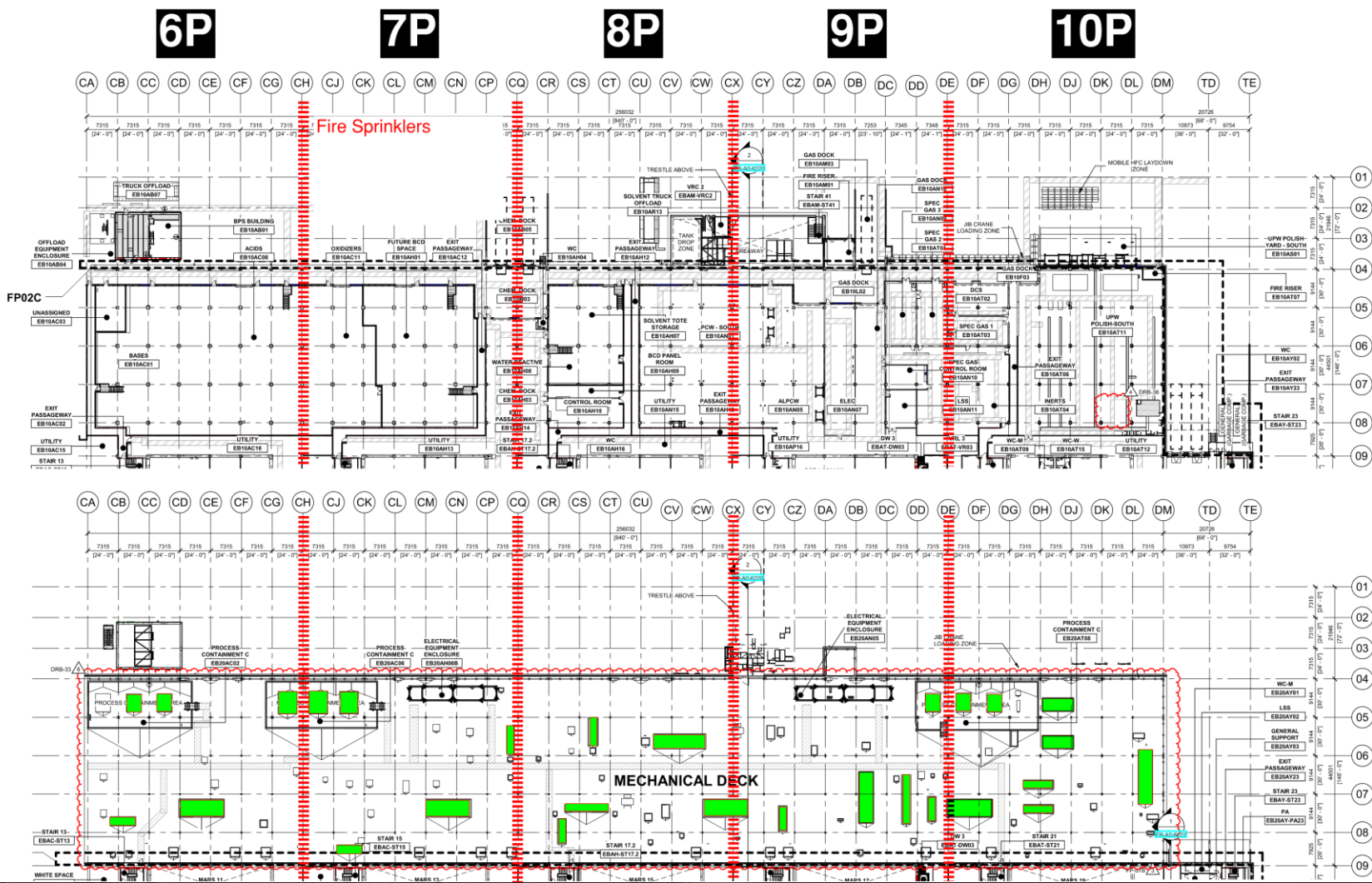
PSSS Roof  
2SA



# PSSS.2

Utility Level  
1YA

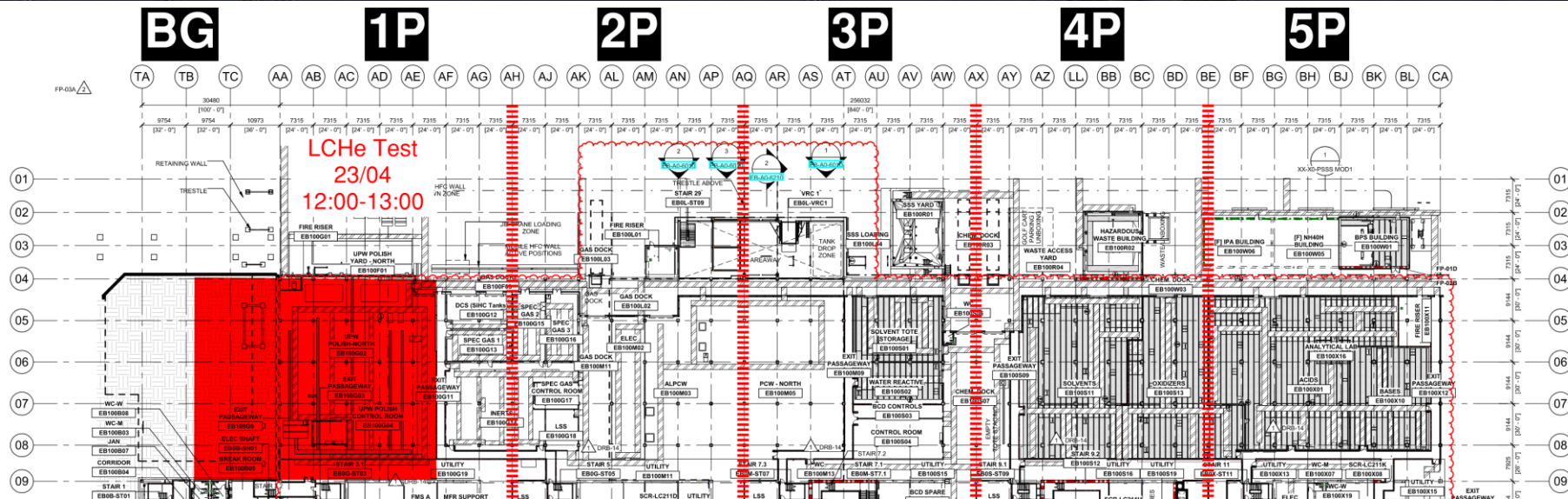
PSSS Roof  
2SA





# PSSS Pressure Tests

Utility Level  
1YA





# BGY GN2 Purging

21<sup>st</sup>-24<sup>th</sup>  
continuous  
noise  
BGY Closed



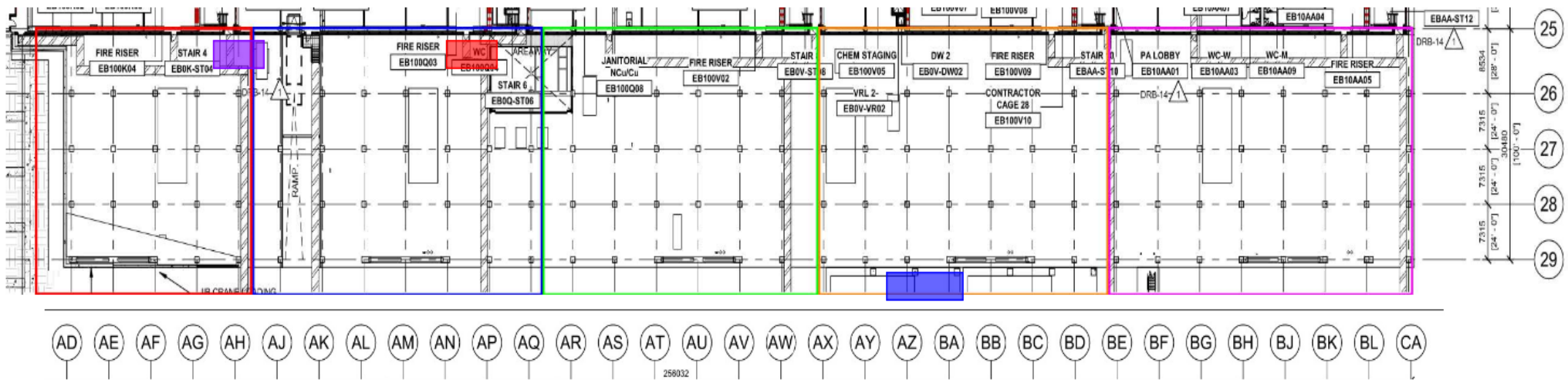


## WJG – UL

\* Carmel Bidud - erection of scaffold for flashing measurements and installation.

\* A.A. scaffold - modification of scaffold for MB

\* Lesico - welding and grouting pipe support



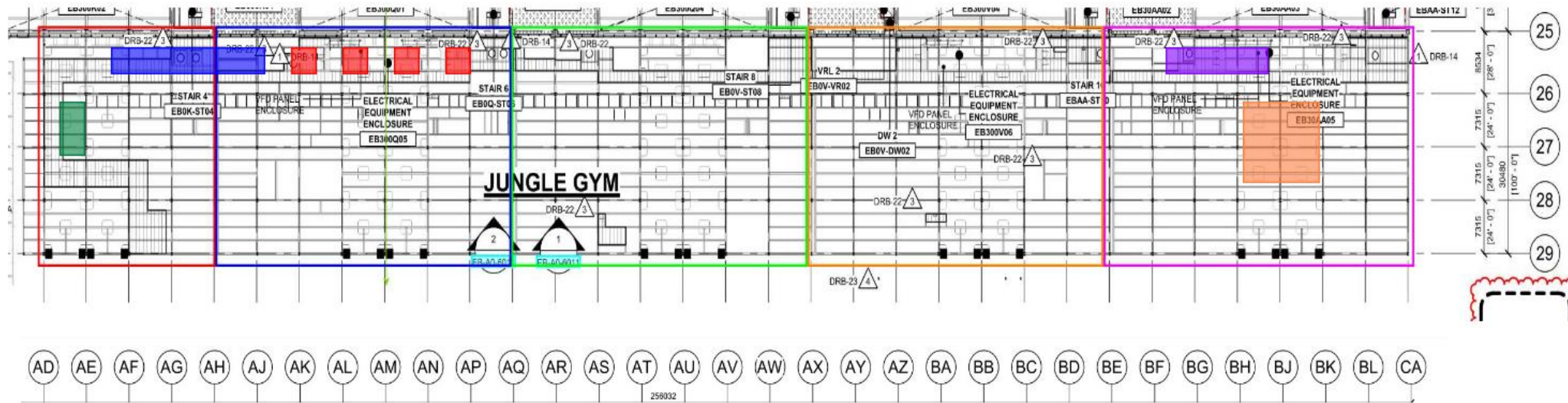


## WJG – Lift 2

\* Taper tech - fixing planking after stiffeners installation  
\* Chemo - continuing insulation

\* W&W - QC for stiffeners and galvanization

\* SK - working on connections to MAH  
\* Afcon - installation of cable tray underneath MAH and doing cable pulling to VFD + working inside VFD





## WJG – Lift 3

\* SN - installing and welding penetrations supports

\* Taper tech - performing planking penetrations and removing ramps for permanent handrails  
\* SN - handrails installation

Pach Taas - working on the fans



# Crane logistics

Crane: 750 ton crane  
is breaking down on  
Thursday 24/04/25

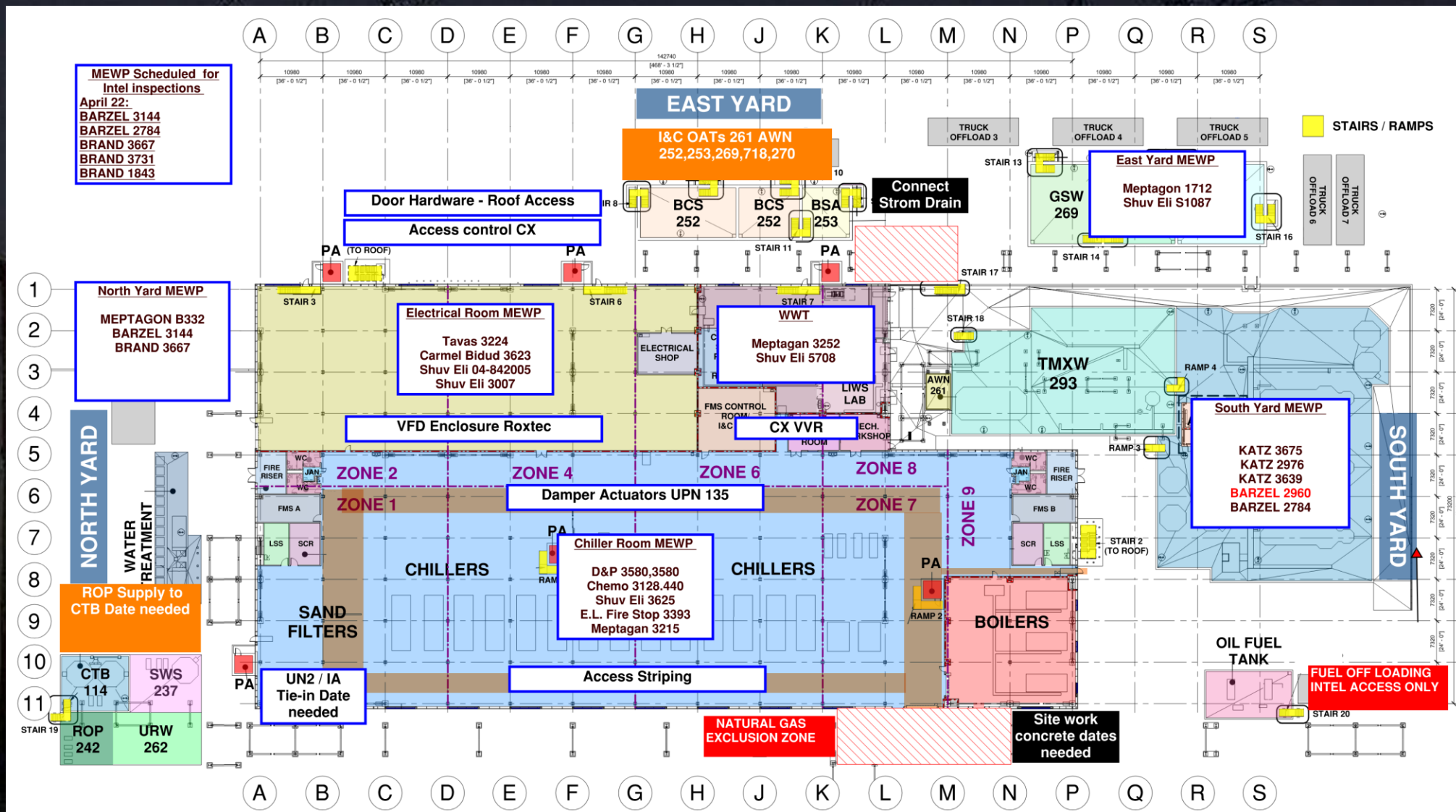




# CUB 1 Ops Ready April 29







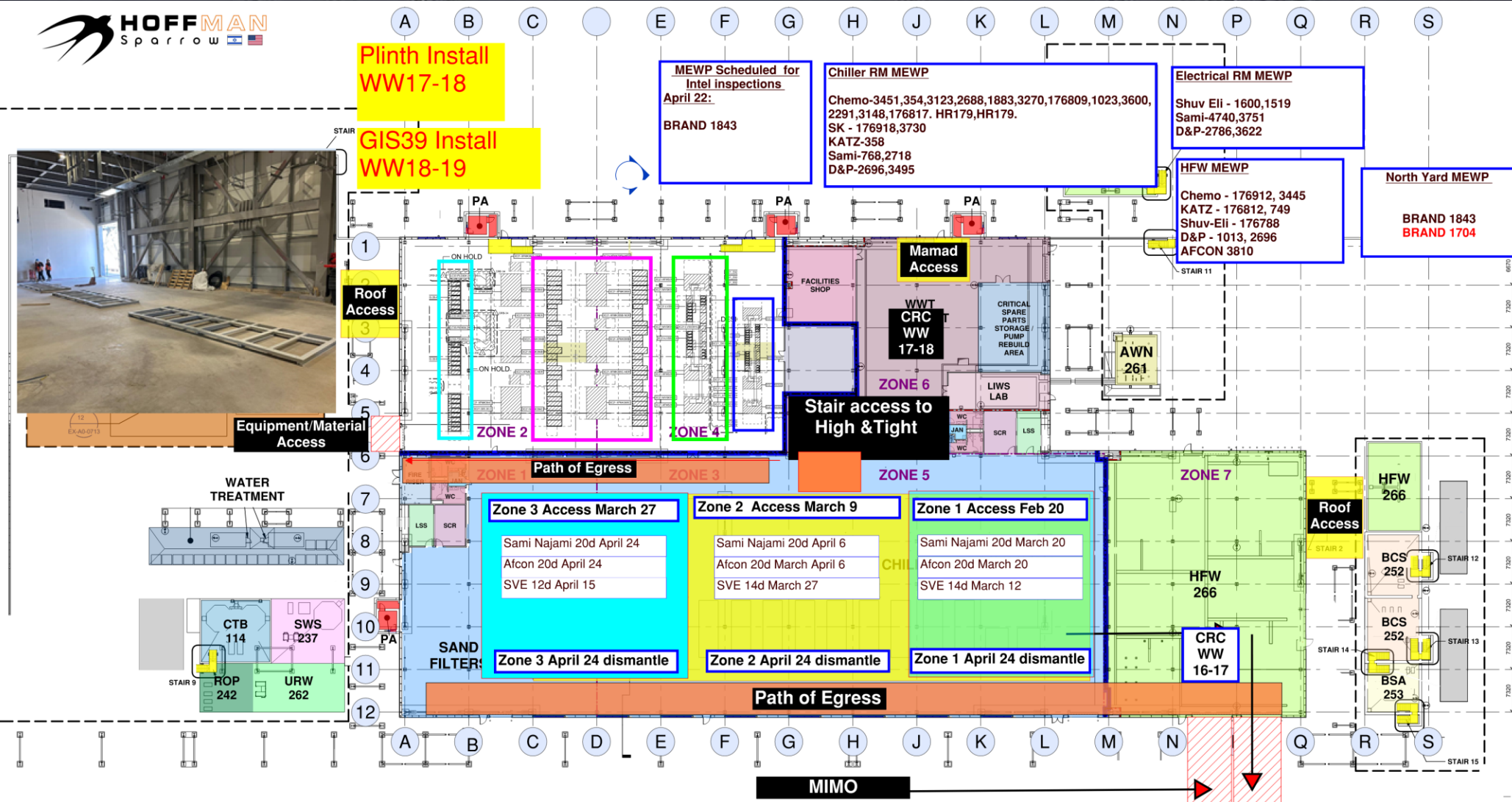




# CUB 1 – EXTERIOR/ROOF

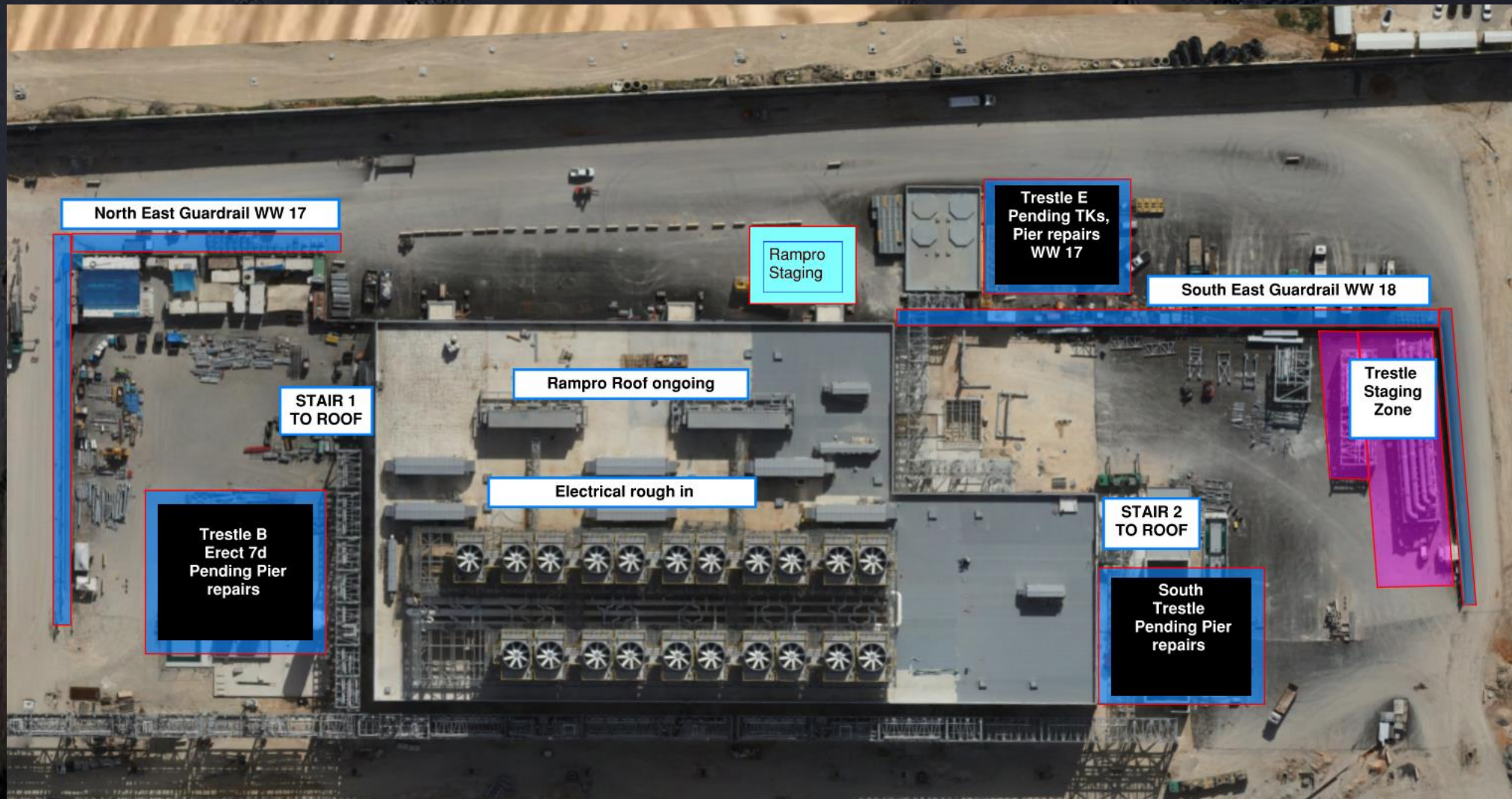








# CUB 2- Trestles/Roof/Guardrails



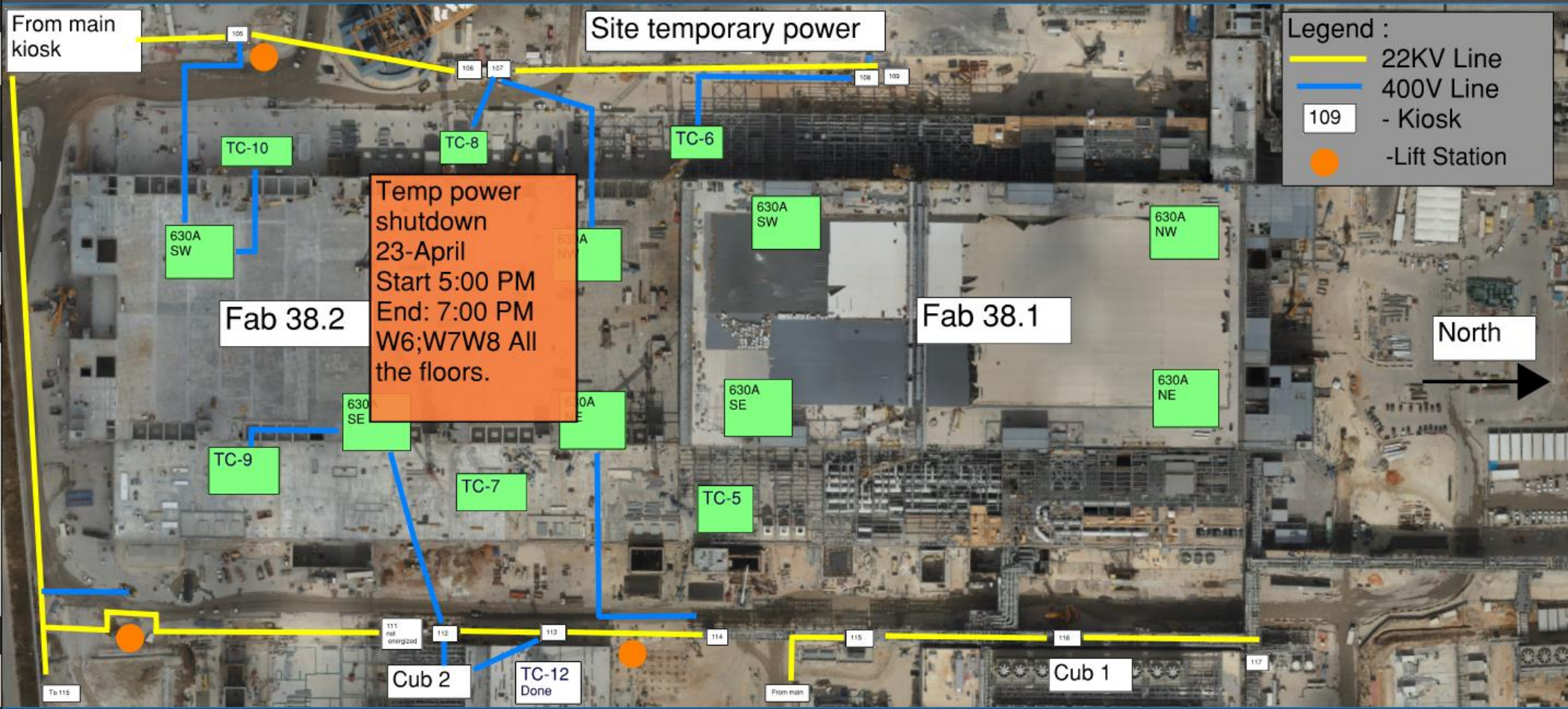








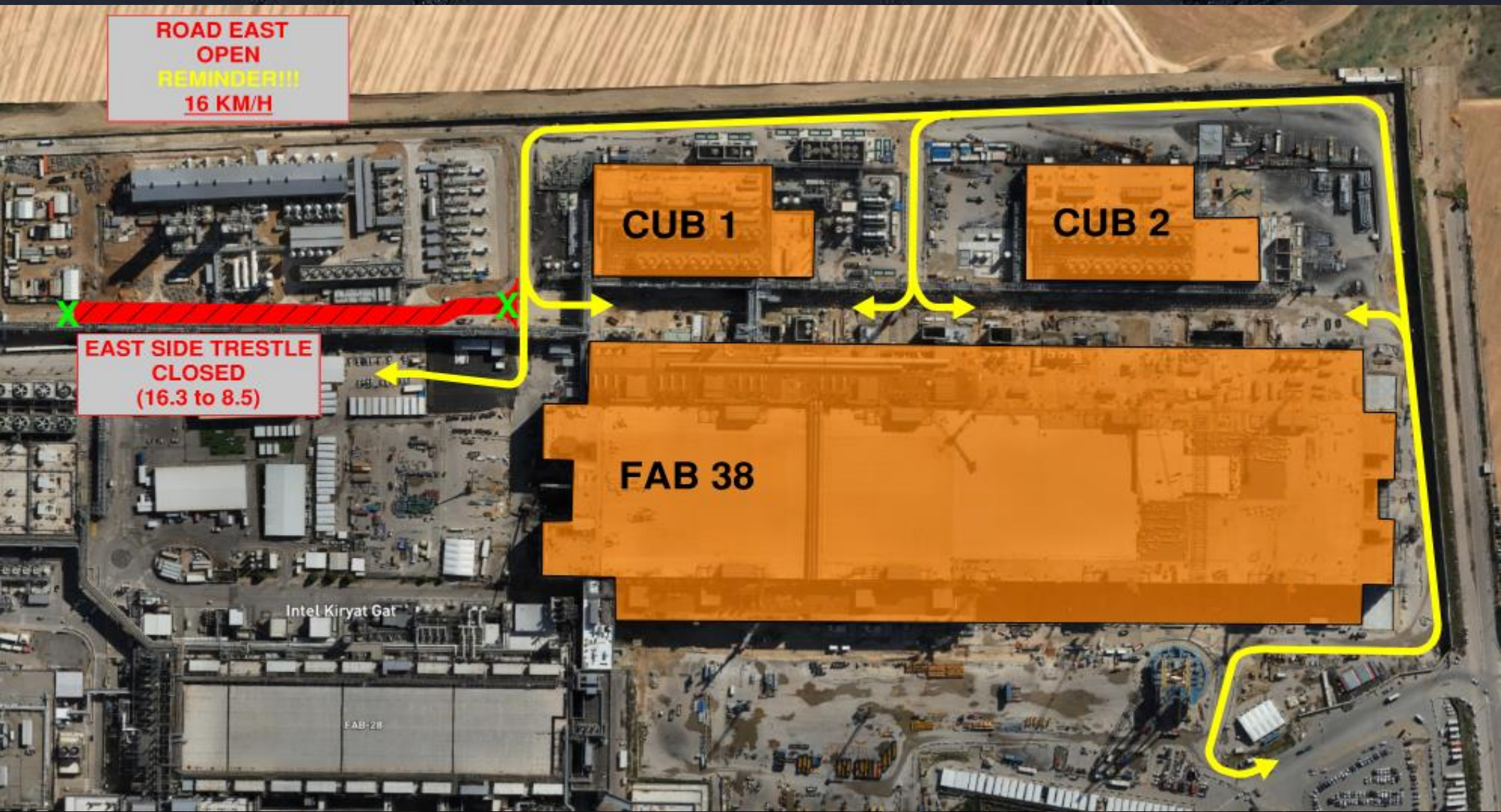
# TEMP POWER





# Daily Coordination Meeting

## Site Logistics





# Daily Coordination Meeting

## Site Logistics: North





# Daily Coordination Meeting

## Site Logistics: South





# Daily Coordination Meeting

## MAMAD Locations

MAMAD LOCATIONS (19-March-2025)  
■ LARGE  
■ SMALL  
■ BUILDING

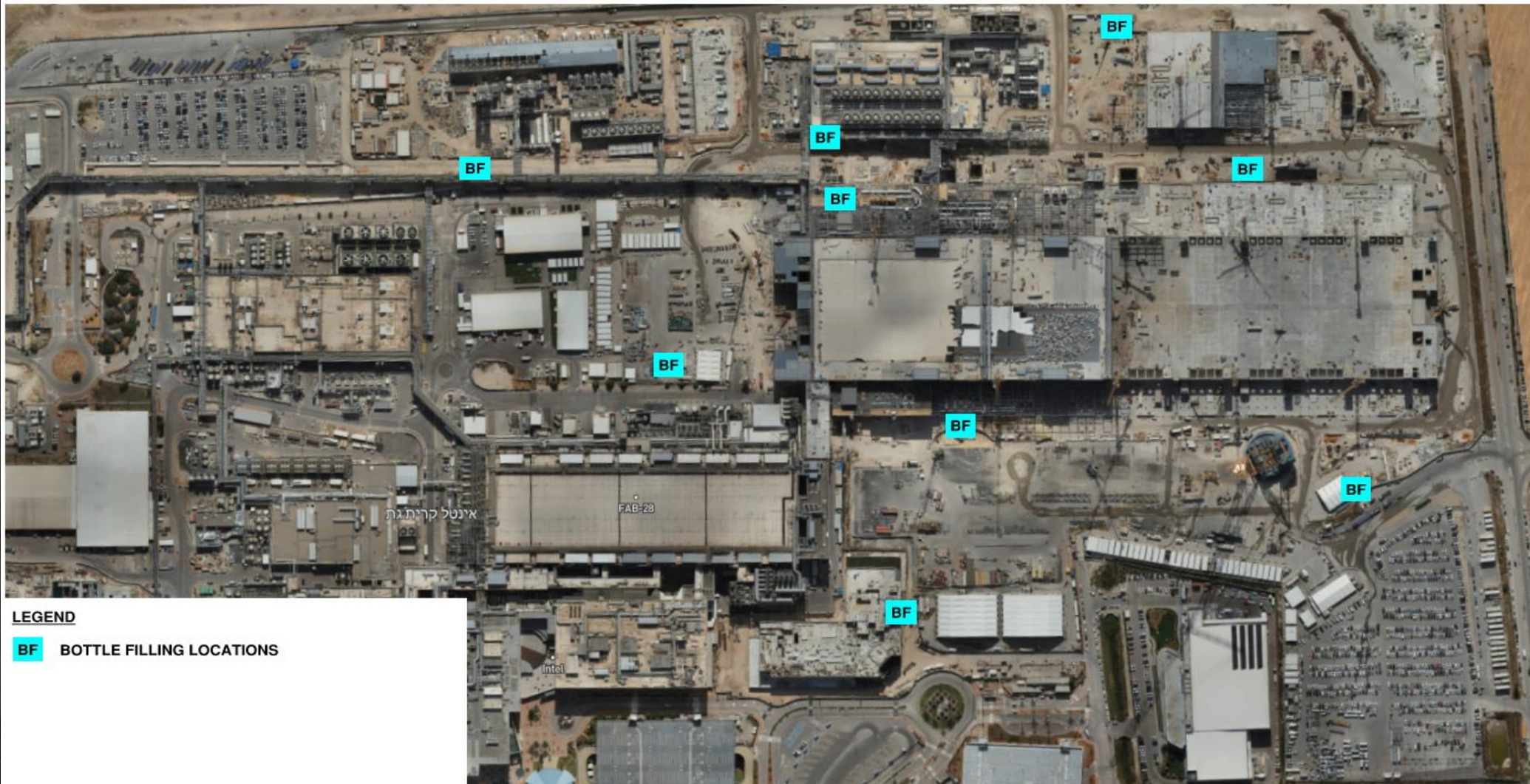




# Daily Coordination Meeting

## WATER BOTTLE FILLING STATIONS

## WATER BOTTLE FILLING STATIONS







# BACK TO MEWP WORK

A.S Barzel	1	2	Cub 1 + 2	Ready to schedule   ממתין לקביעת זימון בדיקה				
BRAND INDUSTRIAL LTD		3	1843 cub2 3731...3667 cub1	Ready to schedule   ממתין לקביעת זימון בדיקה				
D&P Clean Room Ltd	15		CR	Approved   מאושר	04/20/25	1 PM	Approved	Monday 21, 9 AM
ELECTROSAFE LTD	1		Utility 14 AU	Approved   מאושר	04/17/25		Approved	Monday 21, 8 AM
ELRAM PROJECT LTD				Ready to schedule   ממתין לקביעת זימון בדיקה	04/22/25	AM		
ETC Systems LTD	2		Utility CA14 \ PSSS roof	Scheduled   נקבע זימון לבדיקה	04/21/25	13:15		
HYG STEEL 1990 LTD		1	buggy parking	Approved   מאושר	04/20/25		Scheduled	Tuesday 22, AM
Katz Arie Stainless Steel	13	4	CUB 2 / SITE CLOSE TO PMP / UTILITY	Not ready to schedule   לא מוכן לקביעת זימון בדיקה				
Newco - Tec LTD	2		clean room	Scheduled   נקבע זימון לבדיקה	04/22/25	9:30		
Rolling Plains Constriction Inc	3	4	clean room	Approved   מאושר	04/20/25		Approved	Monday 21, 10 AM
SIG Industrial LTD	3		clean room	Fixes pending   ממתין לתיקון	04/20/25	12:30		
SK ENGINEERING & PROJECT (C	11	5		Scheduled   נקבע זימון לבדיקה	04/21/25	14:00		
Sami Najami WW Tooldock	2	4	North Tooldock Outside	Ready to schedule   ממתין לקביעת זימון בדיקה				
TM TEAM LTD	1		clean room	Scheduled   נקבע זימון לבדיקה	04/21/25	15:00		
W&W - AFCO Steel LLC	5	13	wjg/ south fan deck / ut / tool tower / sub fab / psss	Scheduled   נקבע זימון לבדיקה	04/21/25		Scheduled	Monday 21, 1 PM

## Update after Intel walks:

- Working at heights permit.
- Contact information on MEWP.

**Get 100% ready → Contact us → Get your MEWP approved**



# BACK TO MEWP WORK

## 1. Documentation available on the equipment in the field:

- I. Equipment registration document (Rishayon).
- II. Valid Bodek inspection report (Tasker) – must be valid within 6 months of inspection.
- III. Equipment insurance document (Bituach). The identification number for this equipment must be written in the insurance.
- IV. Supplier inspection report – signed and available for review.
- V. Supplier training certificate for equipment operation.
- VI. 18C designation letter listing approved operators and spotters for the specific equipment.
- VII. Equipment manual – must be available in Hebrew and in the language of the operator (QR code acceptable for one language).
- VIII. Working on heights permit.

## 2. Equipment marking:

Each MEWP must be clearly marked with:

- I. The company name and contact information.
- II. A printed list of approved operators and spotters assigned to that equipment.



# BACK TO MEWP WORK

## **3. Intel MEWP Checklist:**

Must be fully completed and signed for each piece of equipment and ready for review in the field.

## **4. Intel MEWP Assessment:**

Must be available in the field and ready for review.

## **5. Visual Inspection of the MEWP:**

- I. All handrails and doors must function properly and be free of damage.
- II. MEWP oil diapers must be properly installed. No red/yellow ropes or wires are permitted.
- III. No temporary or improvised fixes are allowed on any operational system.
- IV. The MEWP must be clean, including the operator's remote control.
- V. Please make sure all items are ready before the scheduled inspection.



# Daily Coordination Meeting



14:00 Sign In