

# Daily Coordination Meeting



# Daily Coordination Meeting

## General Topics:

- Weather
- Electrical work – only by electricians



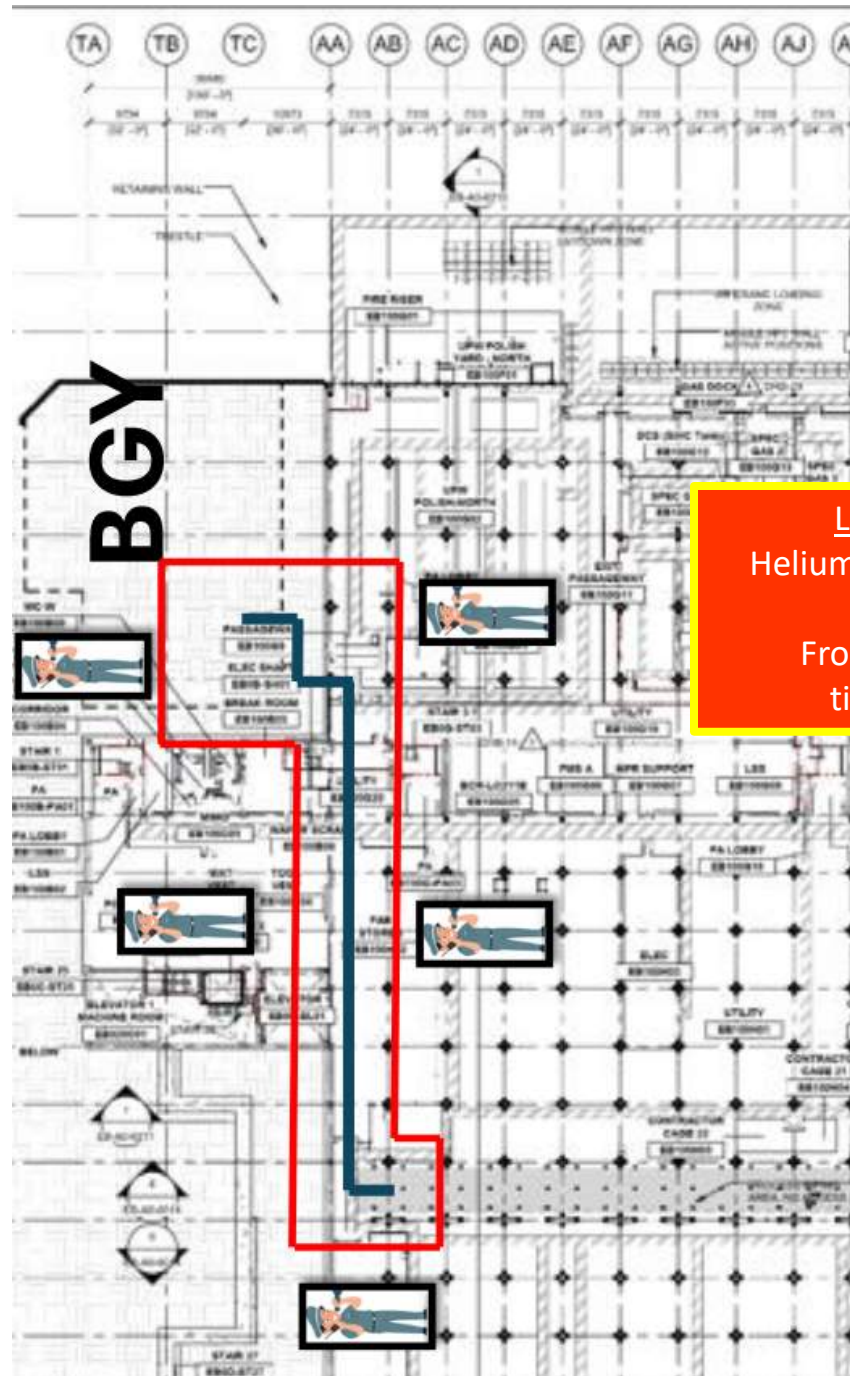
NETT - SOMD  
12:00 am



HOFFMAN CONSTRUCTION COMPANY



## UTILITY LEVEL PRESS TEST



LESICO

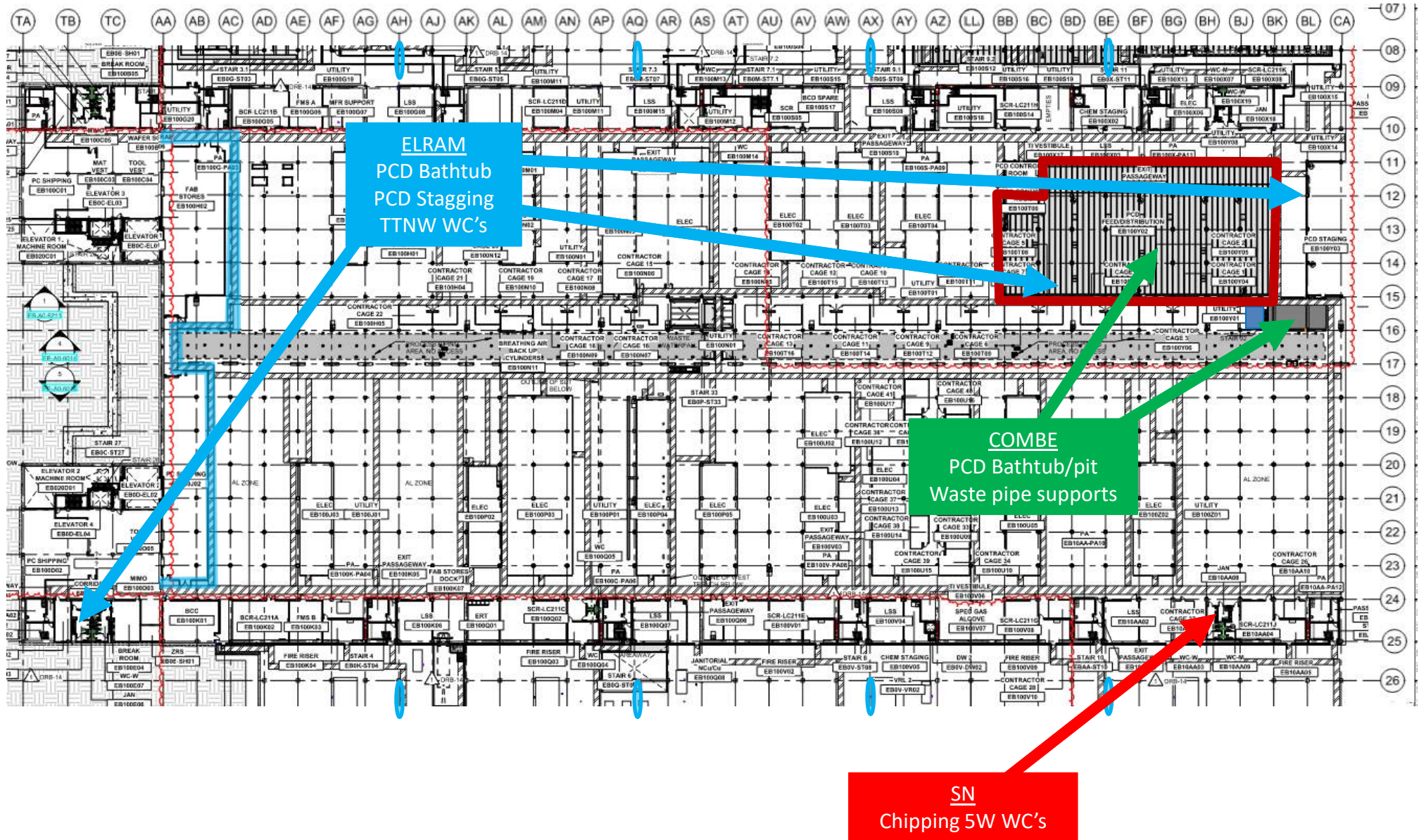
Helium leak check

2/18

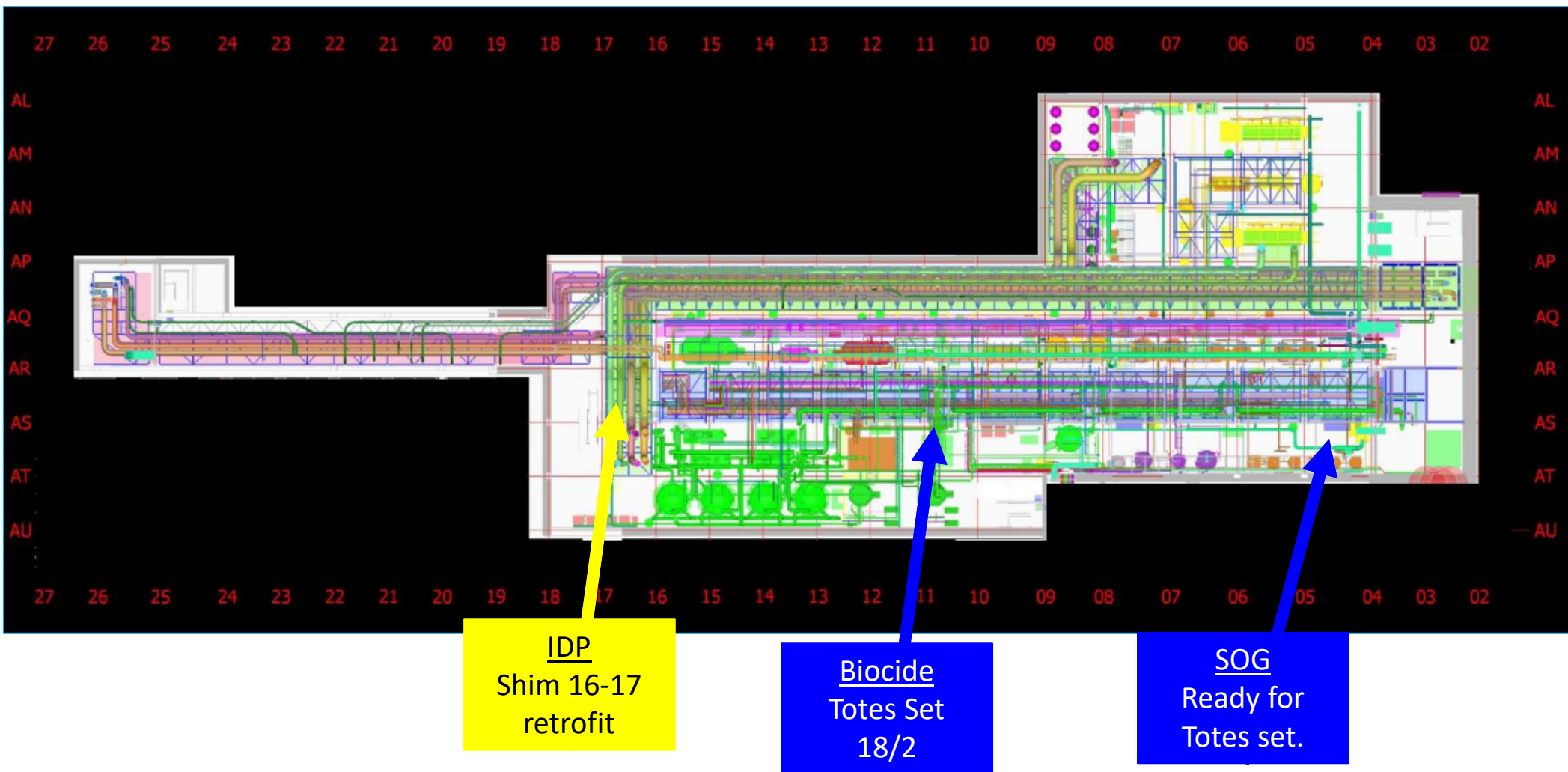
From 17:00

till 1:00

# UTILITY LEVEL MOD1



## SUT 38.1 LEVEL





HOFFMAN CONSTRUCTION COMPANY



SUT 38.2 LEVEL

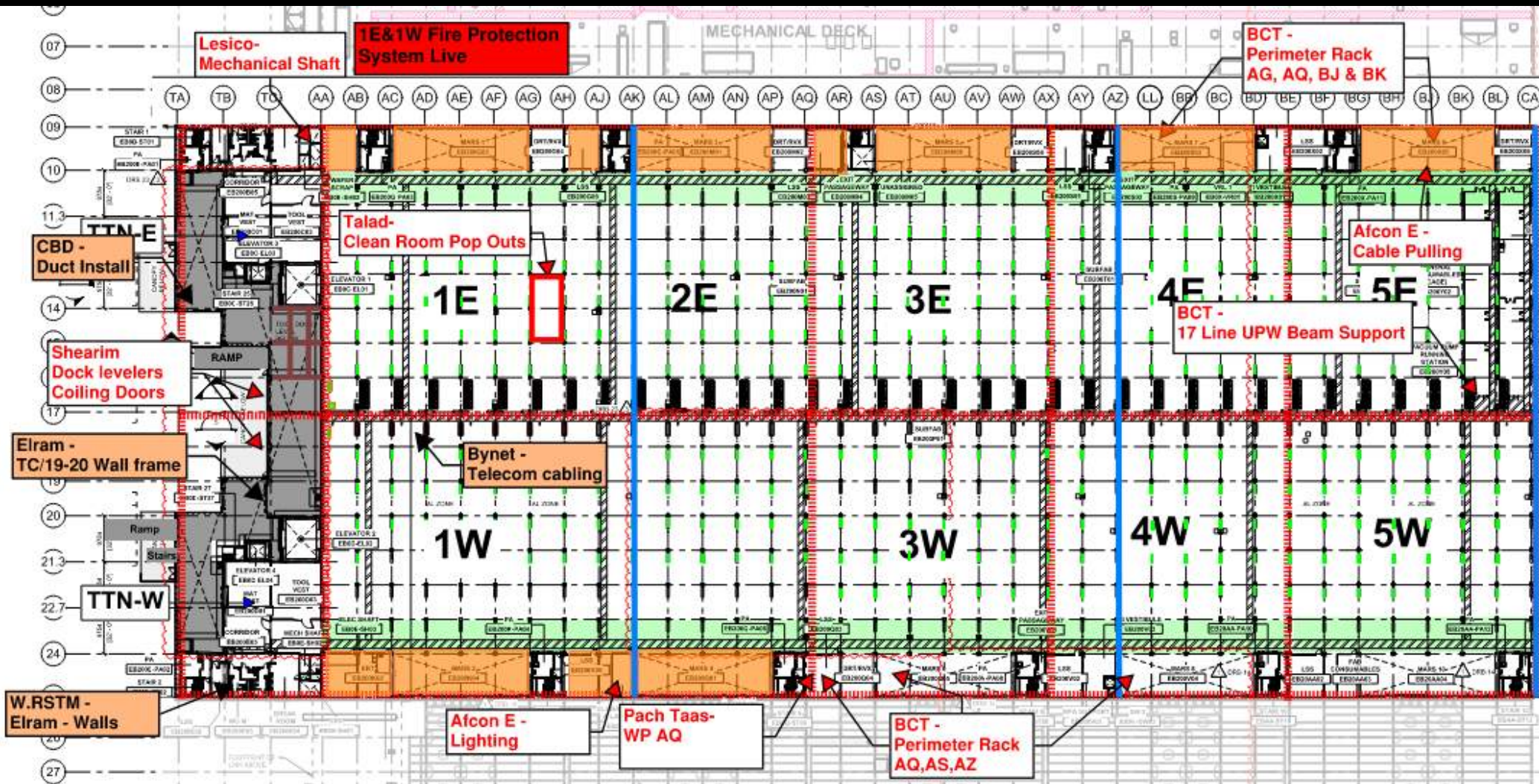
Rack 4b  
Inter  
Connection's



Temp stairs  
relocation

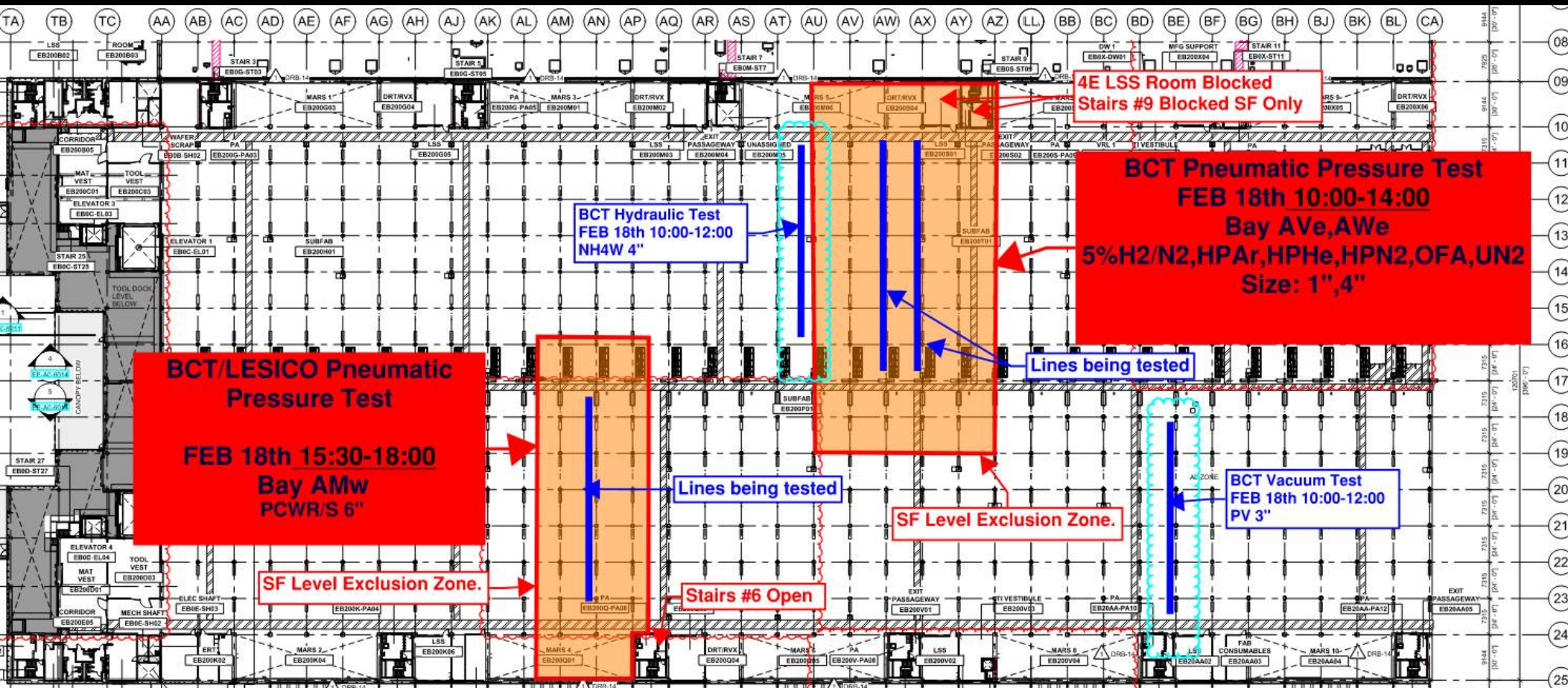
16.2.2025	Module 1
17.02.2025	Module 2
24.02.2025	Module 3
25.02.2025	Module 4
03.03.2025	Module 5
04.03.2025	Module 6

# SUBFAB BUILDOUT MOD 1



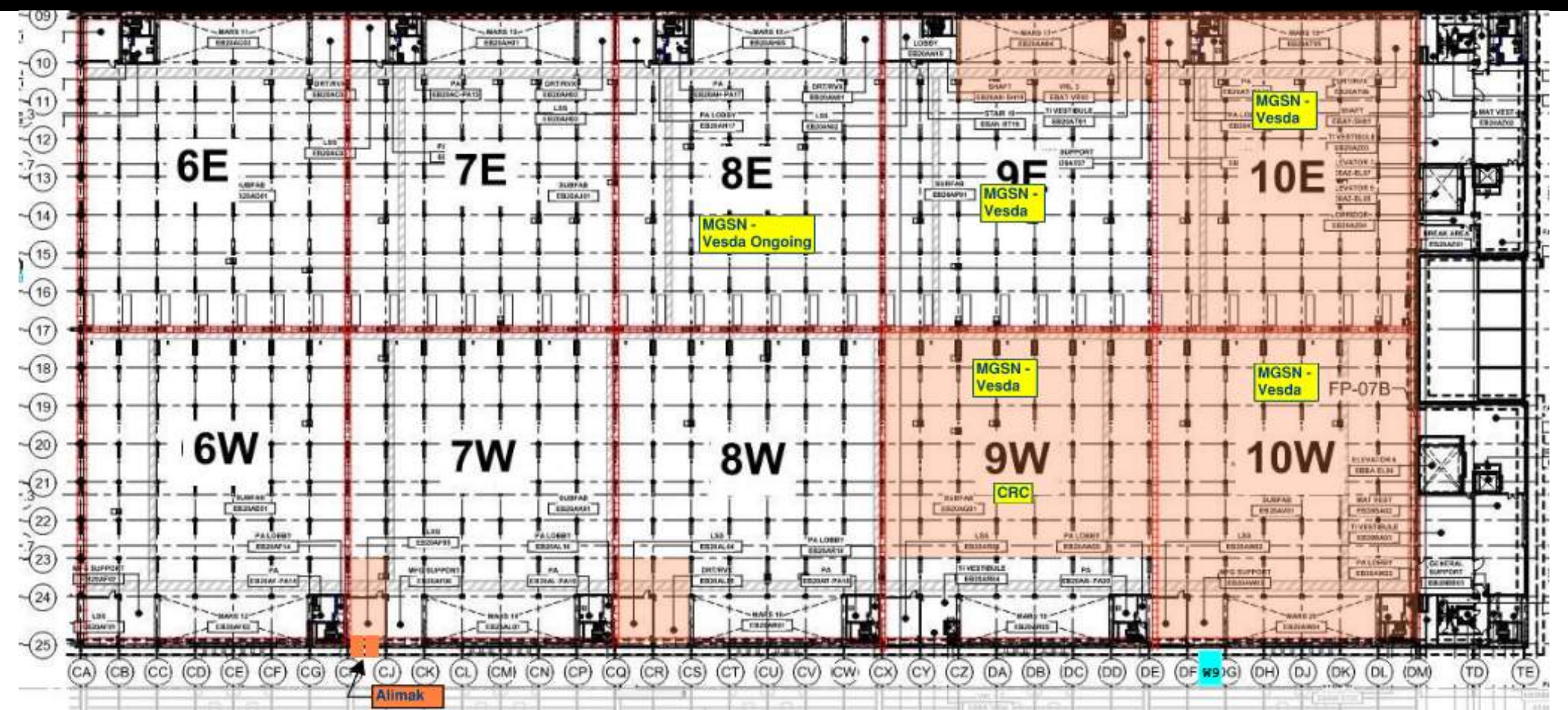
The chart is a grid with columns labeled TA through CA and rows labeled 08 through 25. The grid is divided into four main sections: 1E, 2E, 3E, 4E (top) and 1W, 2W, 3W, 4W (bottom). Each section contains various construction tasks and their durations. Key tasks include 'MARS 3E', 'MARS 4E', 'MARS 5E', 'MARS 3W', 'MARS 4W', 'MARS 5W', 'SHORING INSTALLED', 'ELEVATOR 1', 'ELEVATOR 2', 'ELEVATOR 3', 'ELEVATOR 4', 'MECH SHAFT', 'TOOL VEST', 'TOOL DOCK LEVEL BELOW', 'CANOPY', 'STAIR 1', 'STAIR 2', 'STAIR 27', 'STAIR 28', 'STAIR 29', 'STAIR 30', 'STAIR 31', 'STAIR 32', 'STAIR 33', 'STAIR 34', 'STAIR 35', 'STAIR 36', 'STAIR 37', 'STAIR 38', 'STAIR 39', 'STAIR 40', 'STAIR 41', 'STAIR 42', 'STAIR 43', 'STAIR 44', 'STAIR 45', 'STAIR 46', 'STAIR 47', 'STAIR 48', 'STAIR 49', 'STAIR 50', 'STAIR 51', 'STAIR 52', 'STAIR 53', 'STAIR 54', 'STAIR 55', 'STAIR 56', 'STAIR 57', 'STAIR 58', 'STAIR 59', 'STAIR 60', 'STAIR 61', 'STAIR 62', 'STAIR 63', 'STAIR 64', 'STAIR 65', 'STAIR 66', 'STAIR 67', 'STAIR 68', 'STAIR 69', 'STAIR 70', 'STAIR 71', 'STAIR 72', 'STAIR 73', 'STAIR 74', 'STAIR 75', 'STAIR 76', 'STAIR 77', 'STAIR 78', 'STAIR 79', 'STAIR 80', 'STAIR 81', 'STAIR 82', 'STAIR 83', 'STAIR 84', 'STAIR 85', 'STAIR 86', 'STAIR 87', 'STAIR 88', 'STAIR 89', 'STAIR 90', 'STAIR 91', 'STAIR 92', 'STAIR 93', 'STAIR 94', 'STAIR 95', 'STAIR 96', 'STAIR 97', 'STAIR 98', 'STAIR 99', 'STAIR 100'. The chart also includes a legend for 'SHORING INSTALLED' and 'ELEVATOR 1'.

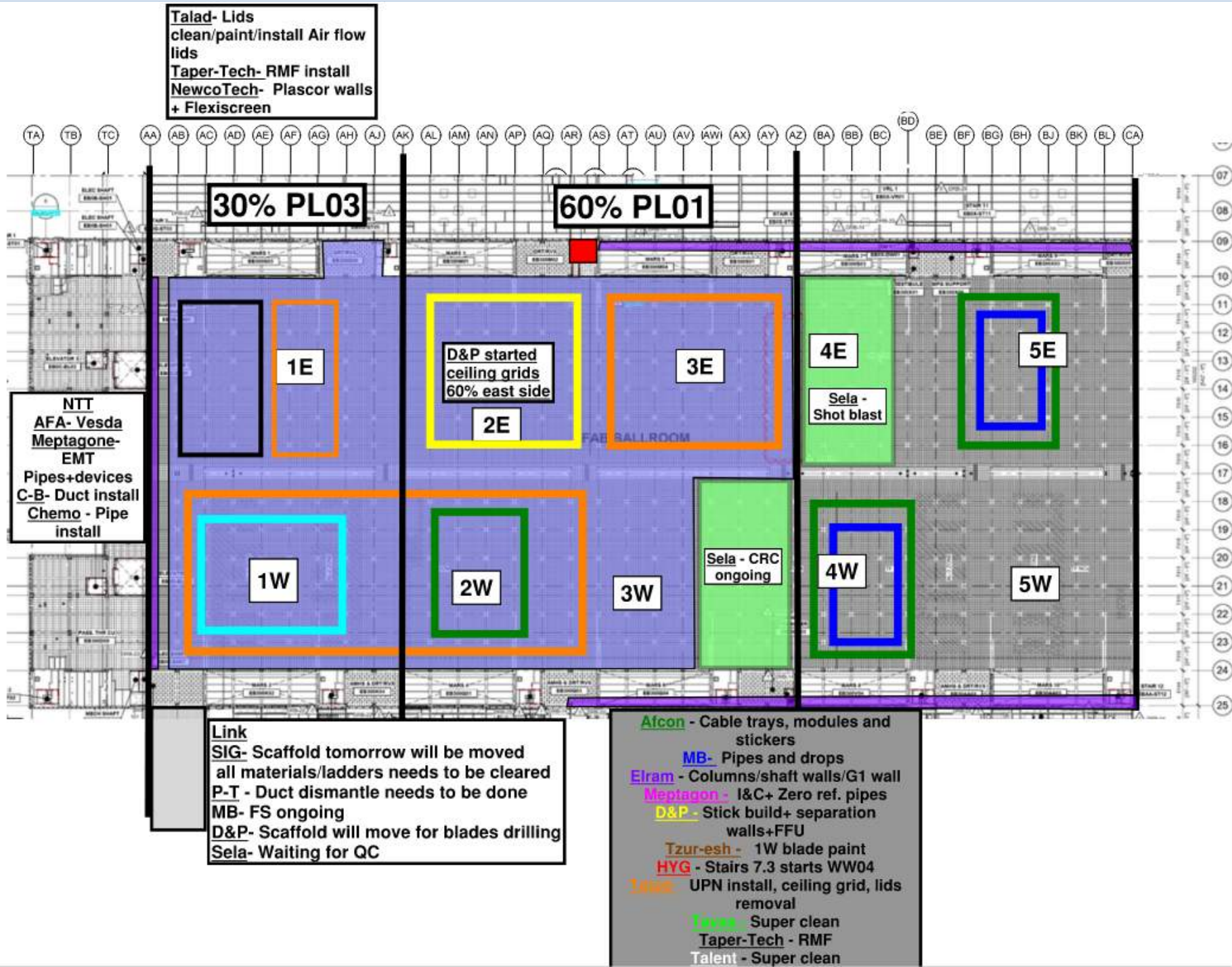
# BCT Pressure Tests Today

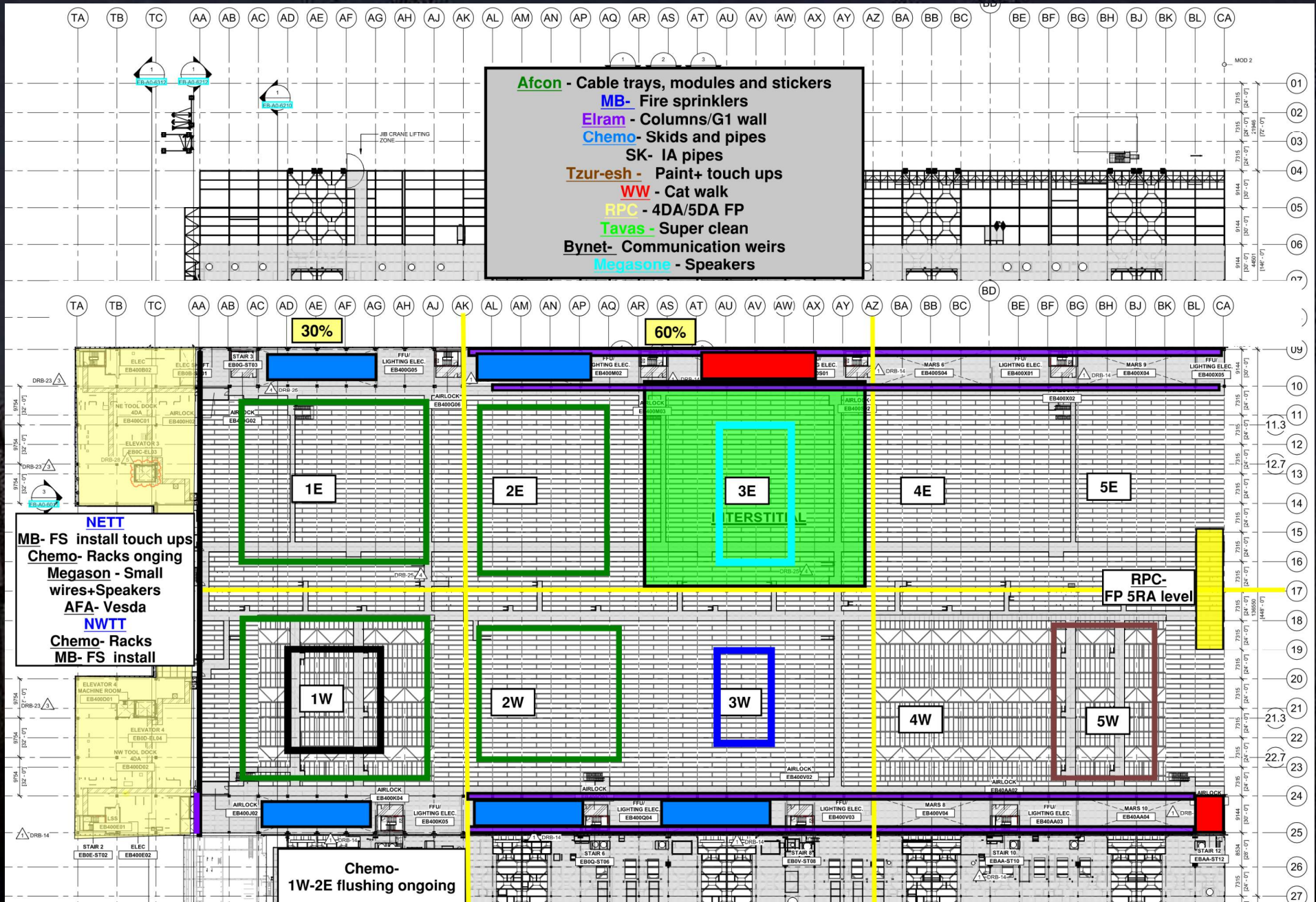


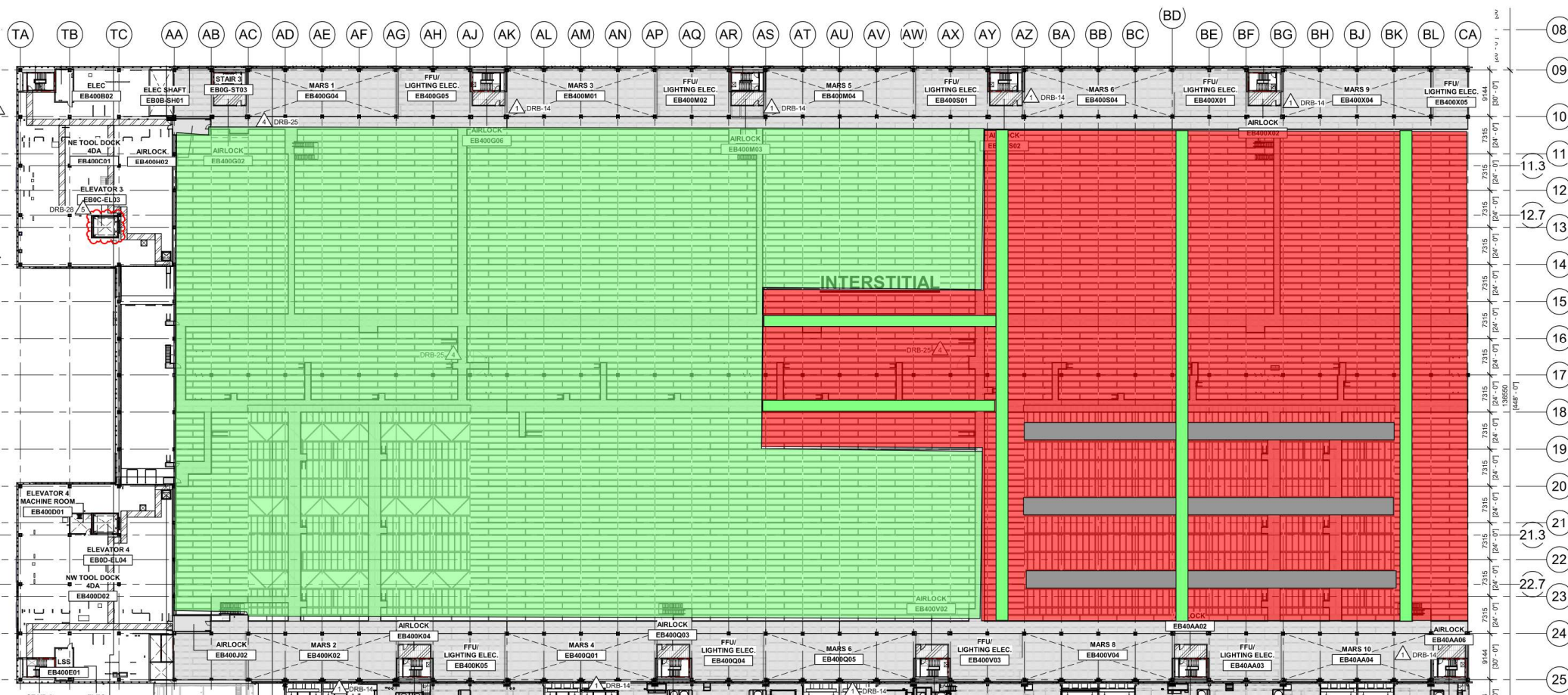


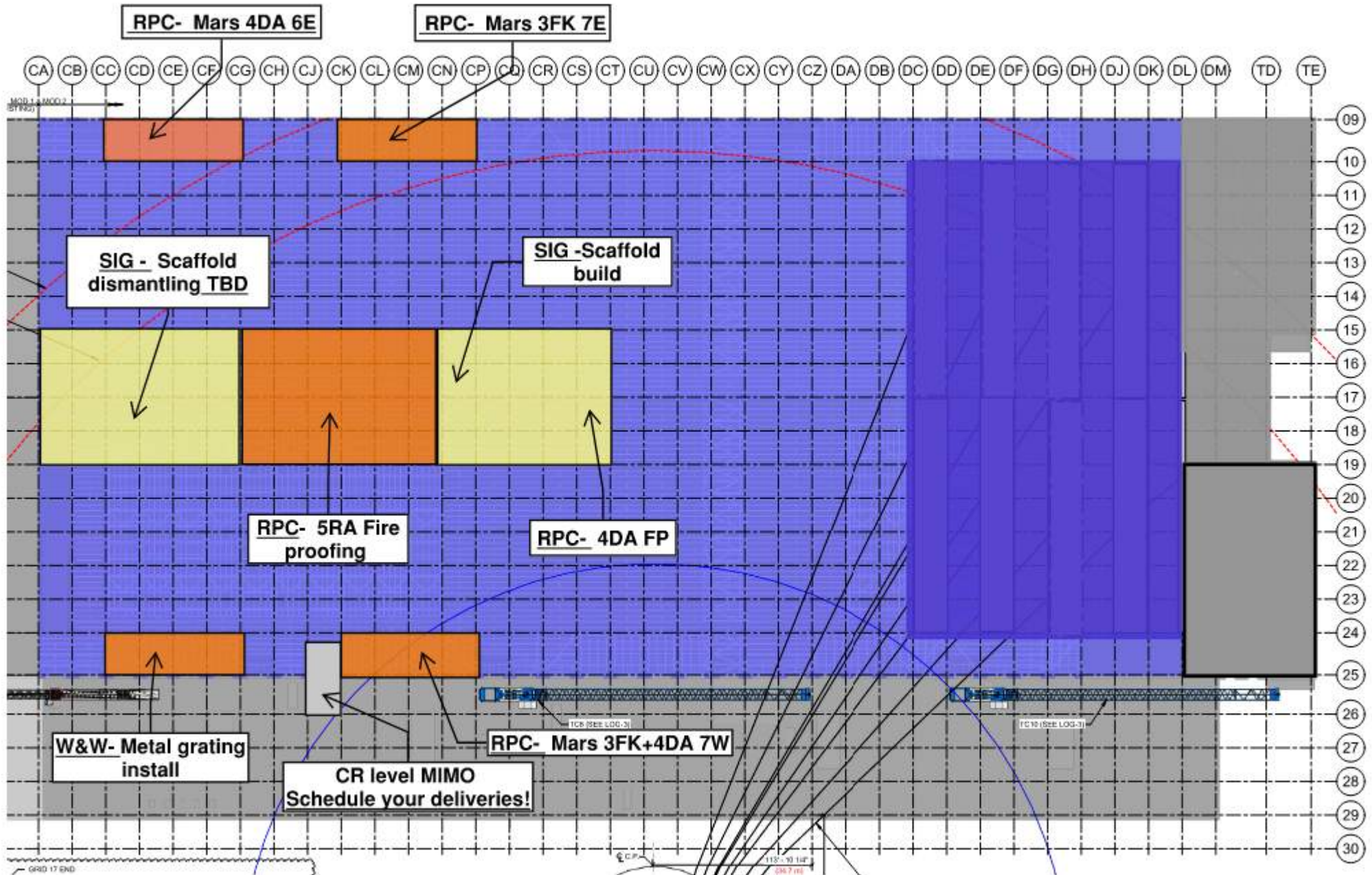
## SUBFAB BUILDOUT MOD 2

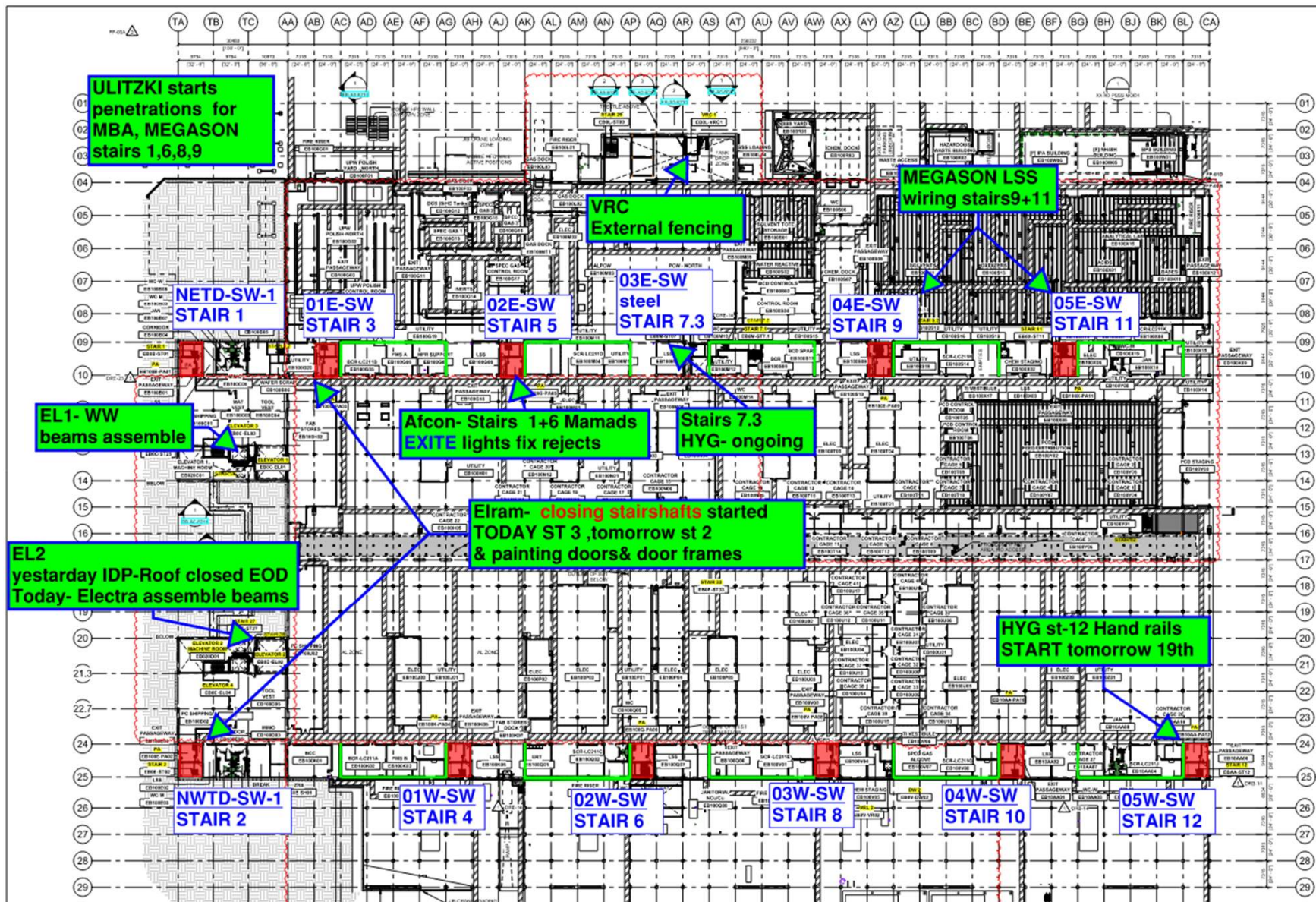




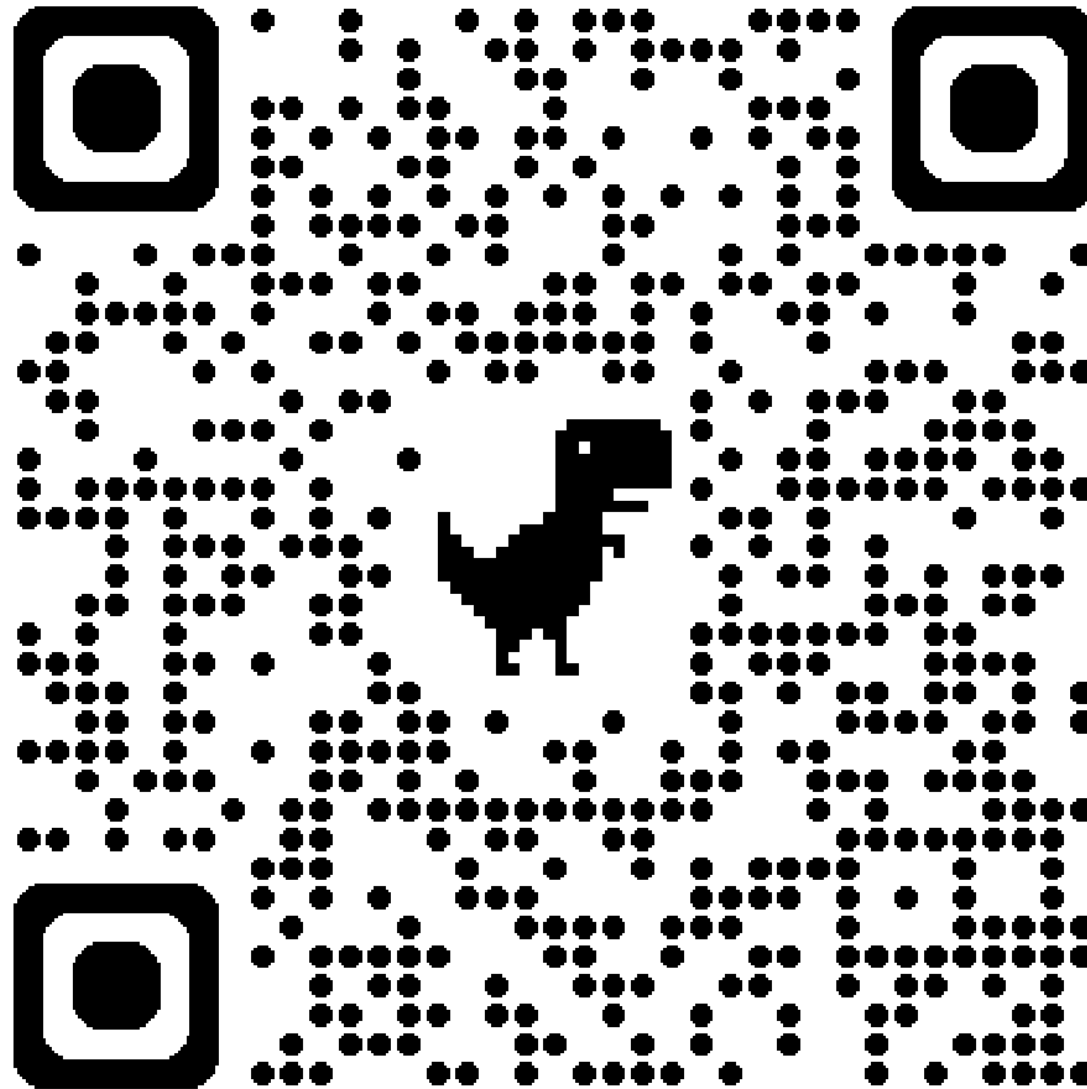




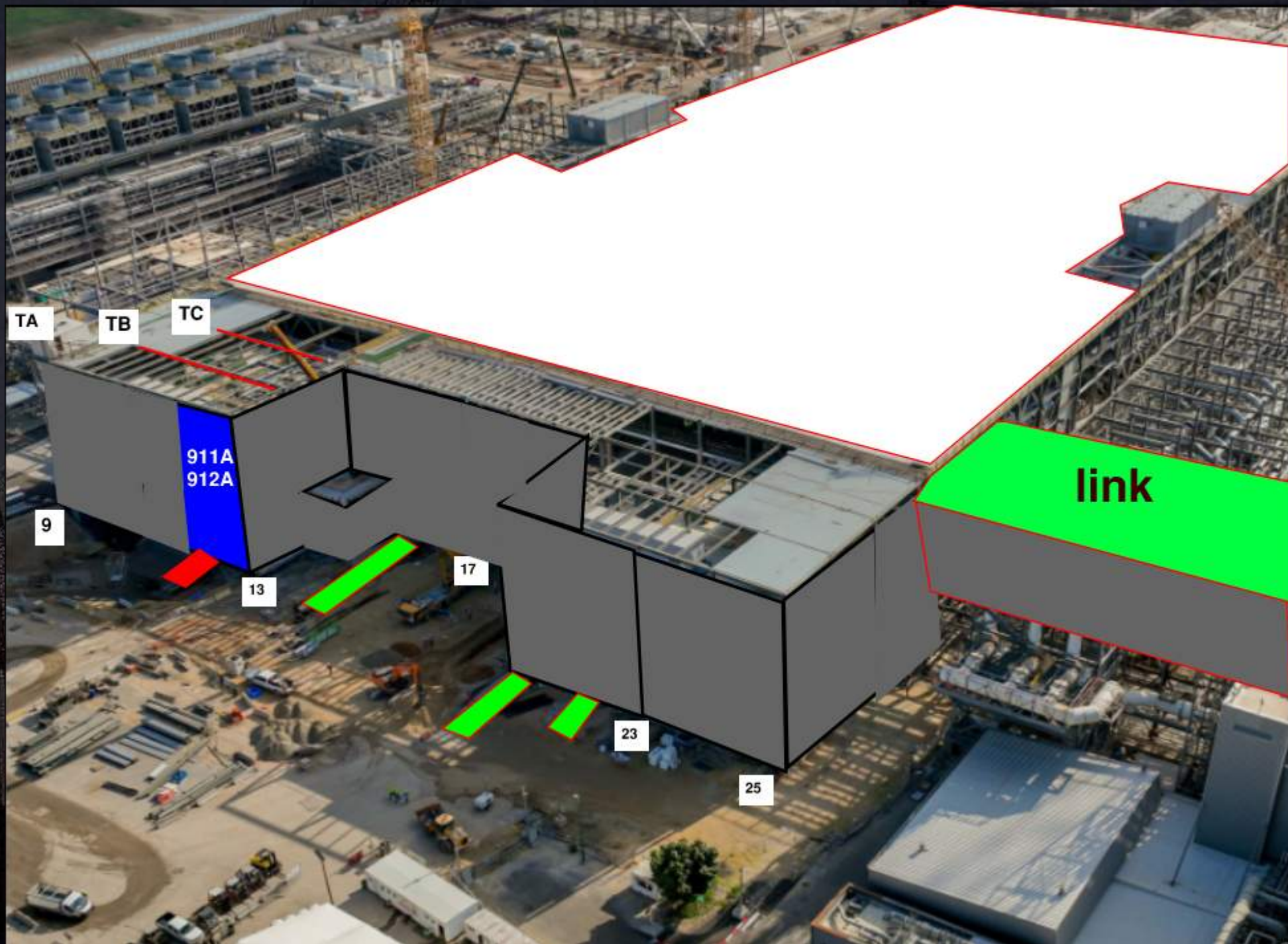


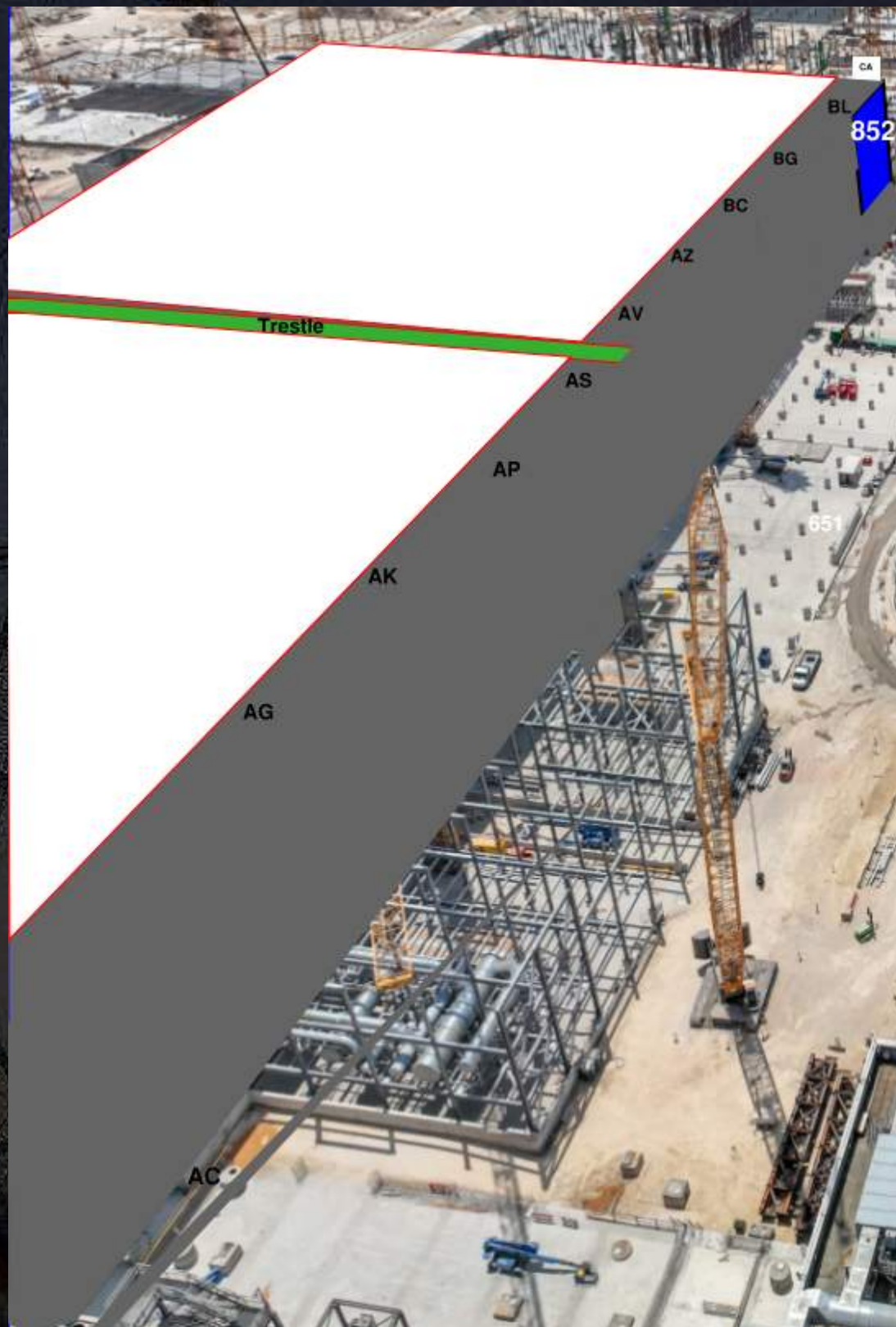


# Siding Penetration Request Form



Subcontractor must fill out and submit all required cells in order to get a penetration cut through the siding.

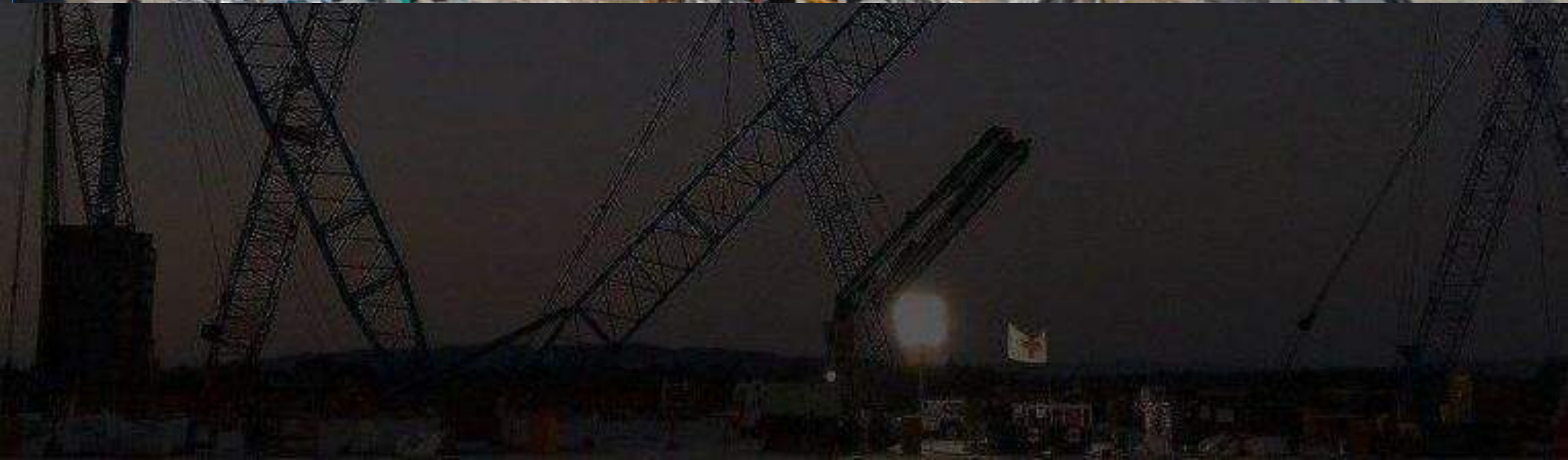






## MODEL EXISTING OFFICE/CLUBING

2752/ 2751	2742/ 2741	2732/ 2731	2722/ 2721	2712/ 2711	2552/ 2551	2542/ 2541	2532/ 2531	2522/ 2521	2512/ 2511	2502/ 2501
---------------	---------------	---------------	---------------	---------------	---------------	---------------	---------------	---------------	---------------	---------------





## MOD 2 WESTSIDE GIRTS/SIDING

2602/  
2601

2612/  
2611

2622/  
2621

2632/  
2631

2642/  
2641

2652/  
2651

2812/  
2811

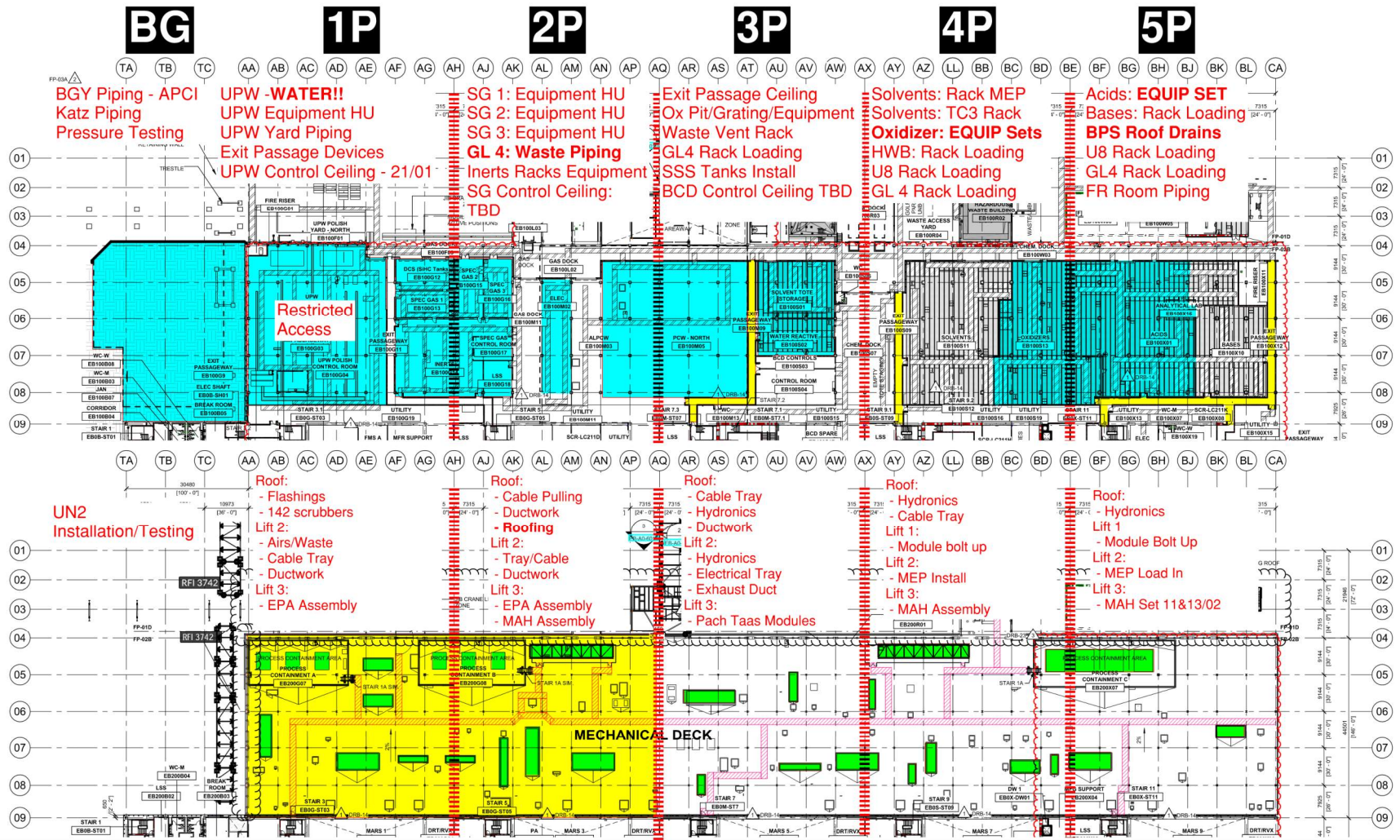
2822/  
2821

2832/  
2831

2842/  
2841

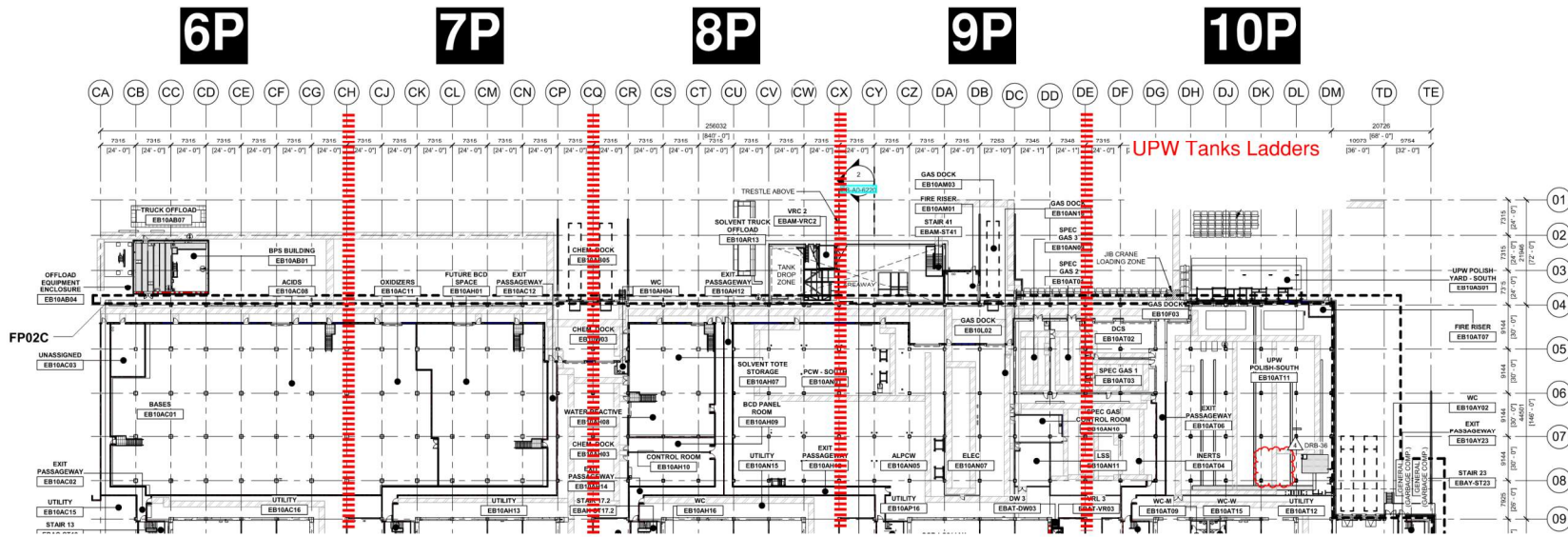
2852/  
2851

# PSSS.1

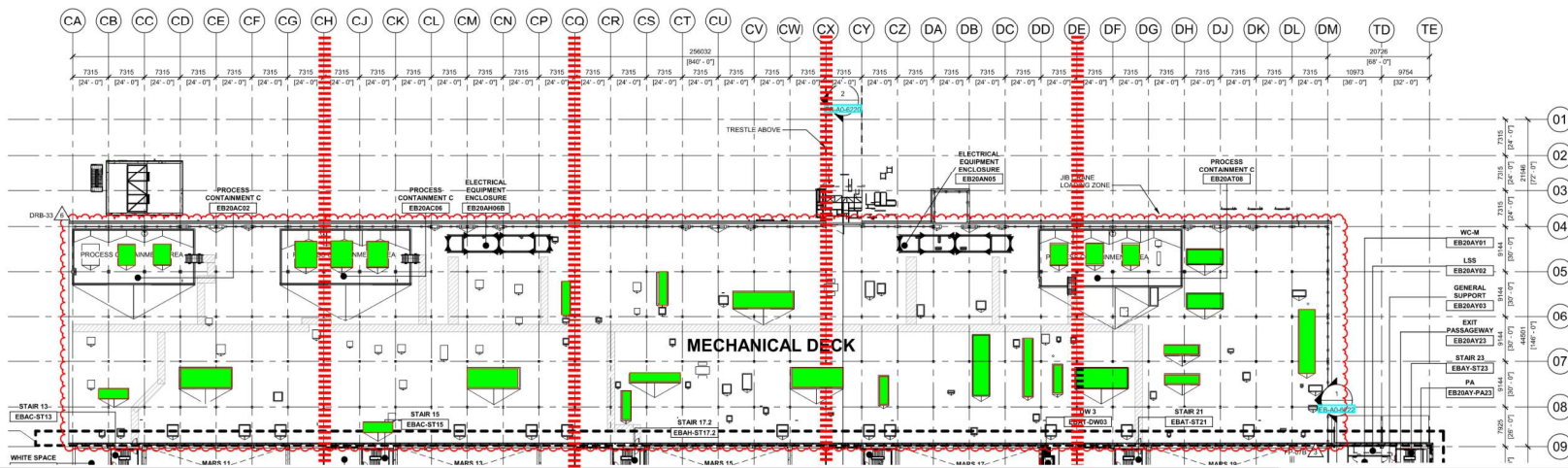


# PSSS.2

Utility Level  
1YA

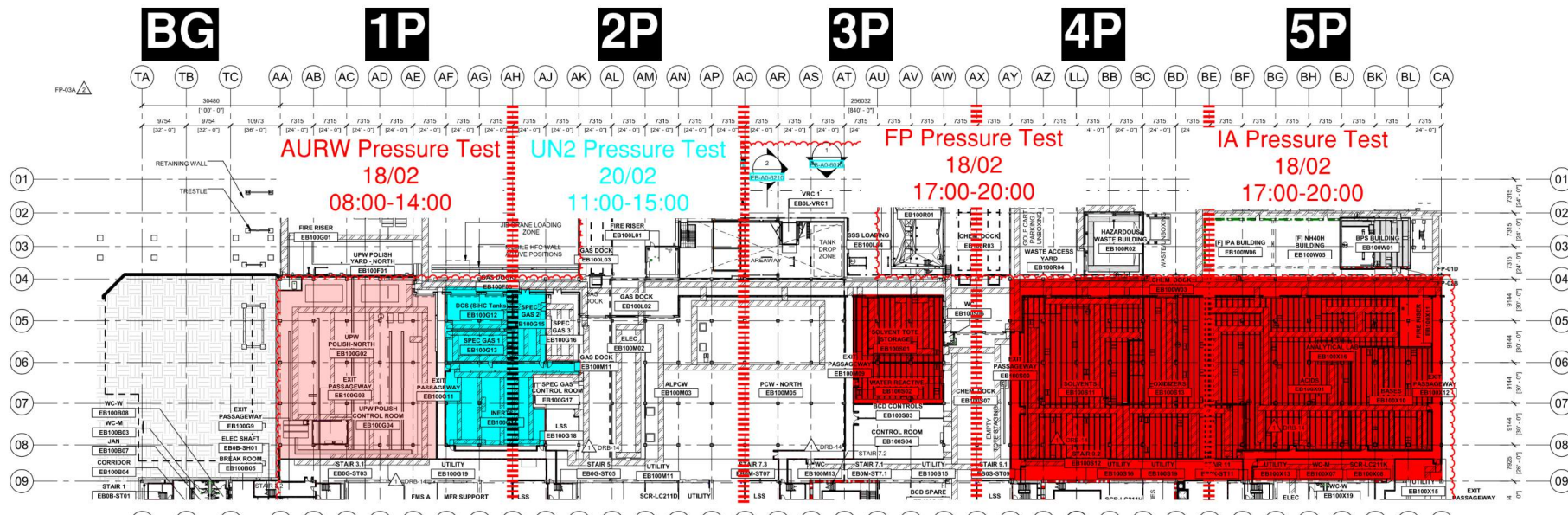


PSSS Roof  
2SA



# Utility Level

## 1YA



# 500T Dismantle 18<sup>th</sup>-20<sup>th</sup>





## WJG – UL

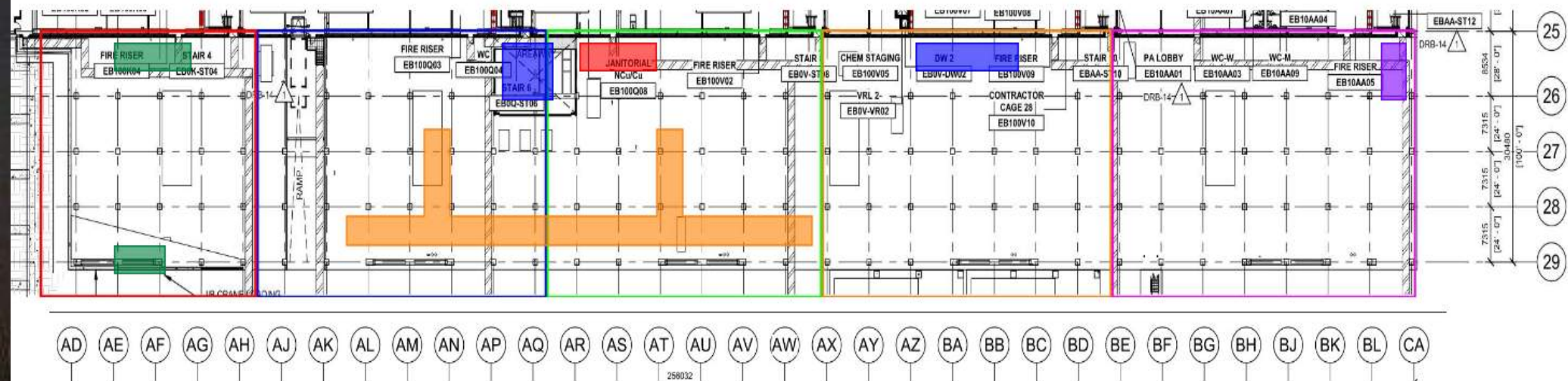
\* Megason - working on fire detection and alarm

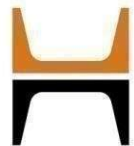
\* Afcon - installation of permanent lighting and cable pulling.  
\* Pach Taas - installation of modules in UL of west SUT.

\* Afcon - installation of permanent lighting and cable pulling to the fixtures.  
\* Pach Taas - installation of wall panels.

\* SK - installation of 3" cooper pipe

\* W&W - working on girts CA line





## WJG – Lift 2

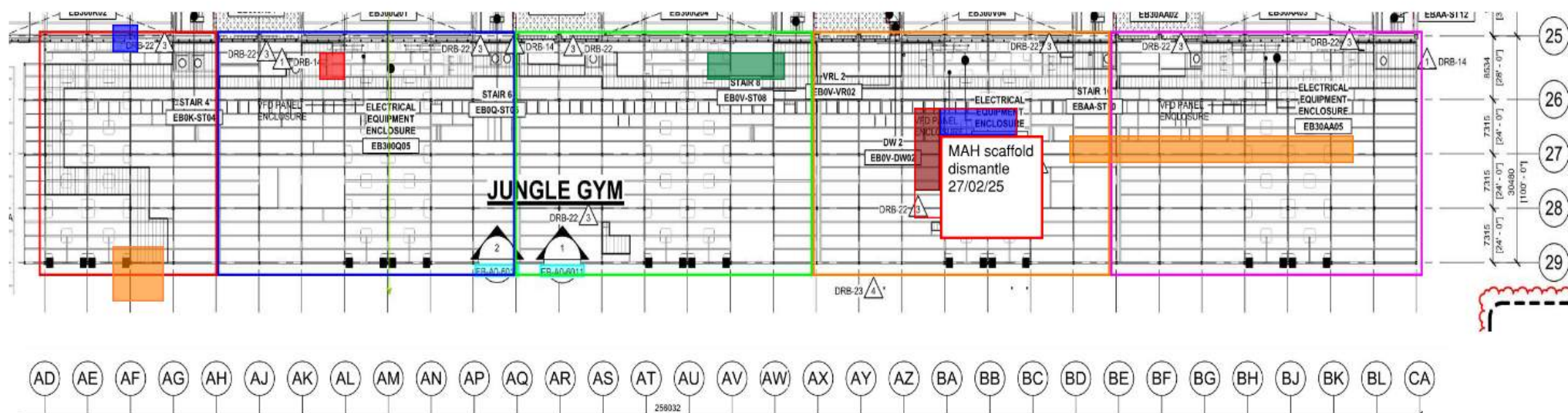
\* W&W - working on Jib crane supports.  
\* SIG - erecting a scaffold for SN gutter pipes works

\* Afcon - pulling cables from the roof

\* Pach Taas - installation of 1800 mm module and WP.

\* SK - installation of CRW pipes to MAH.  
\* Afcon - installation of cable trays and connections to MAH.  
\* 4J MAH scaffold will be dismantled on 27/02/25

\* Chemo Aharon - Insulation of UPN 117.



## WJG – Lift 3

W&W - fixing of gratings.

\*Afcon - pulling cables to the roof

\* Pach Taas - installation of horizontal ductworks to EPA platform.

\* Sami Najami - cutting grating penetrations.  
\* W&W - welding supports for Jib crane.

Sami Najami - cutting grating penetrations.



# WJG UTILITY LEVEL BUILD OUT

## Crane logistics

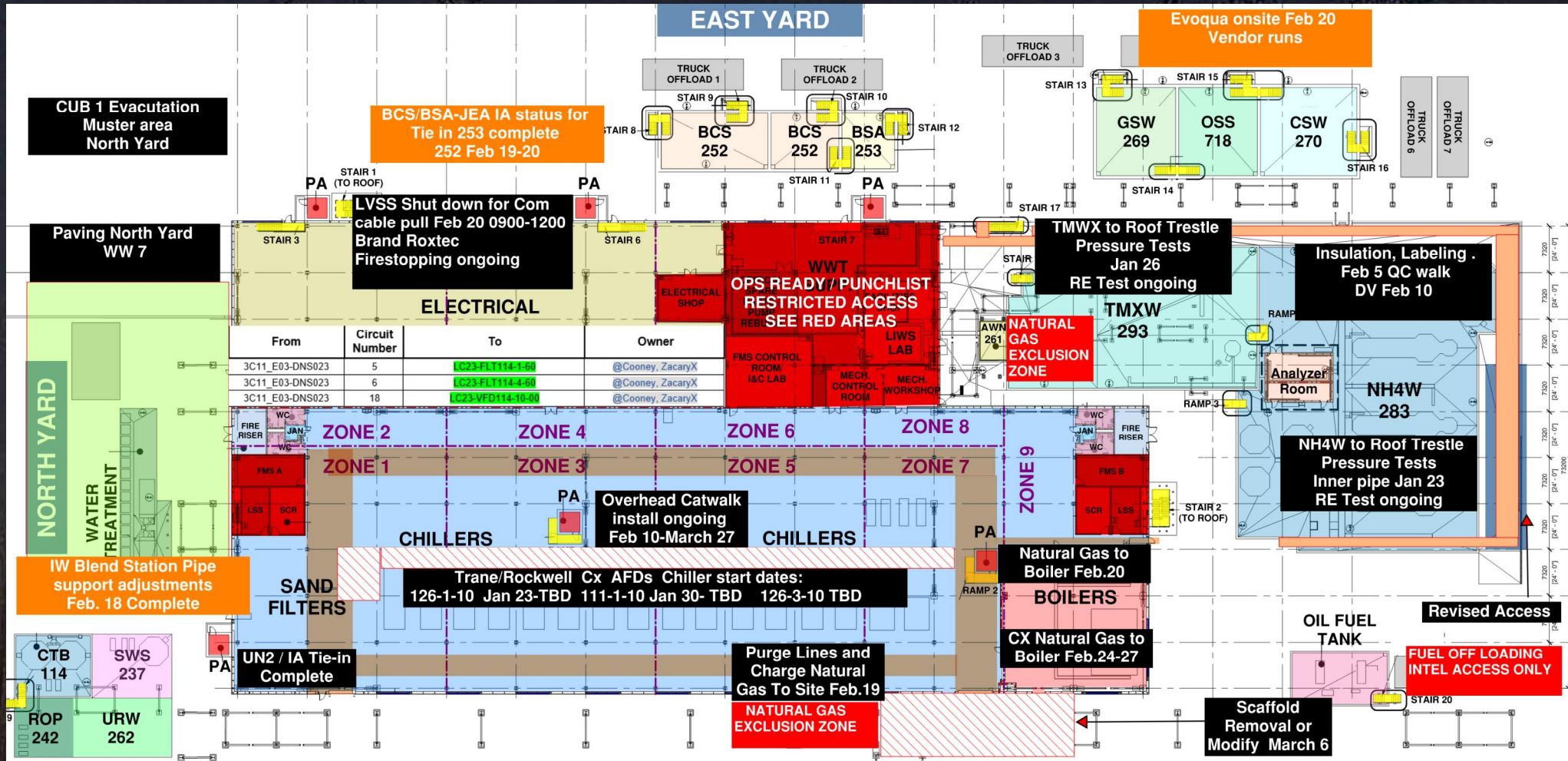
Crane: 220 ton  
location: AF on west  
road

Crane: 500 ton  
location: AQ on west  
road



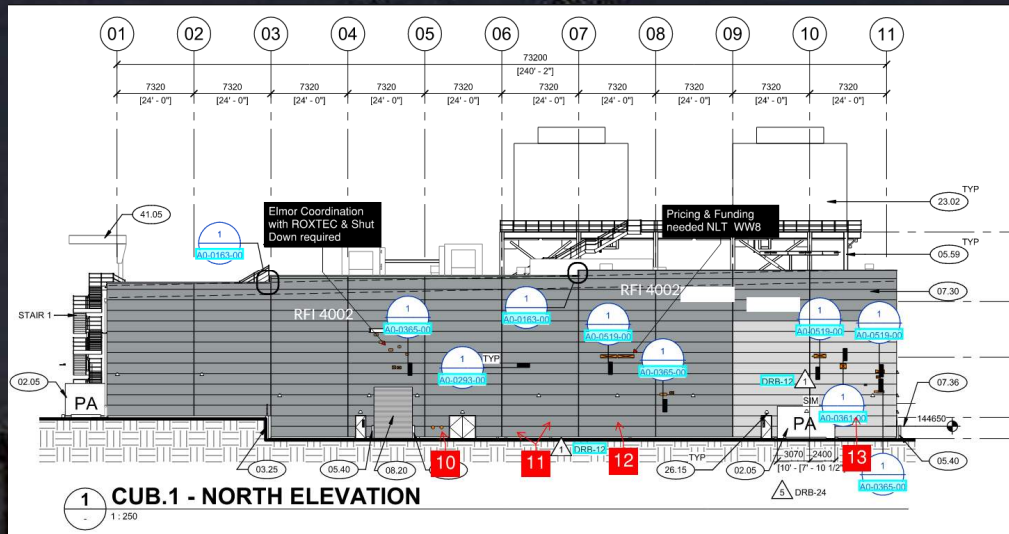


# CUB 1

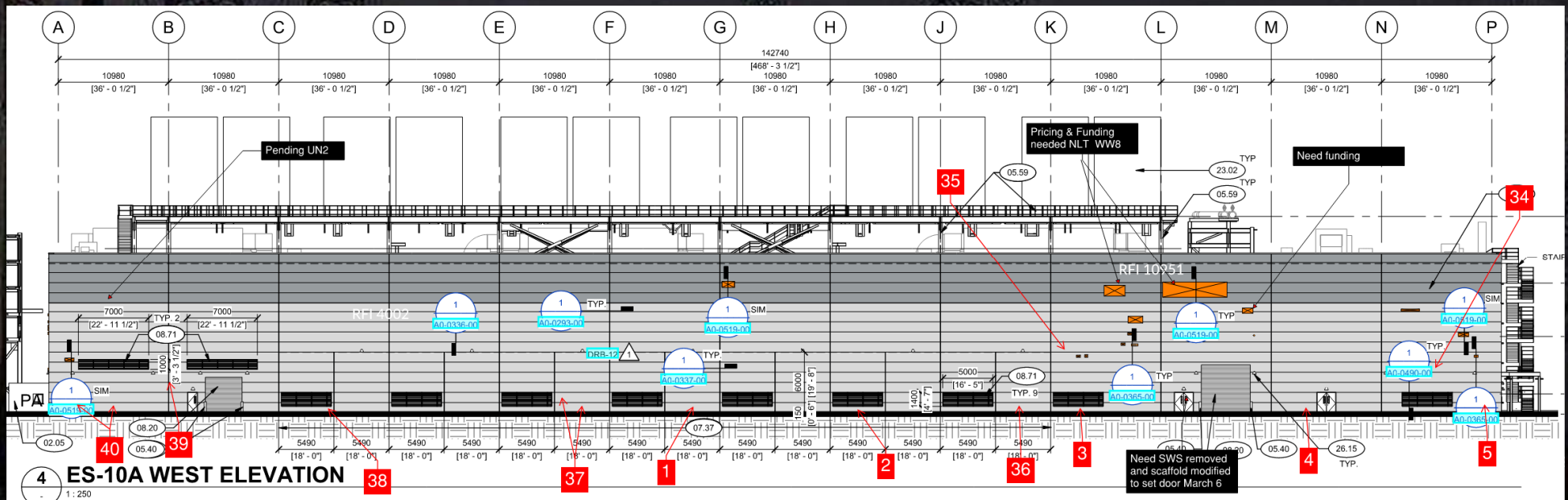




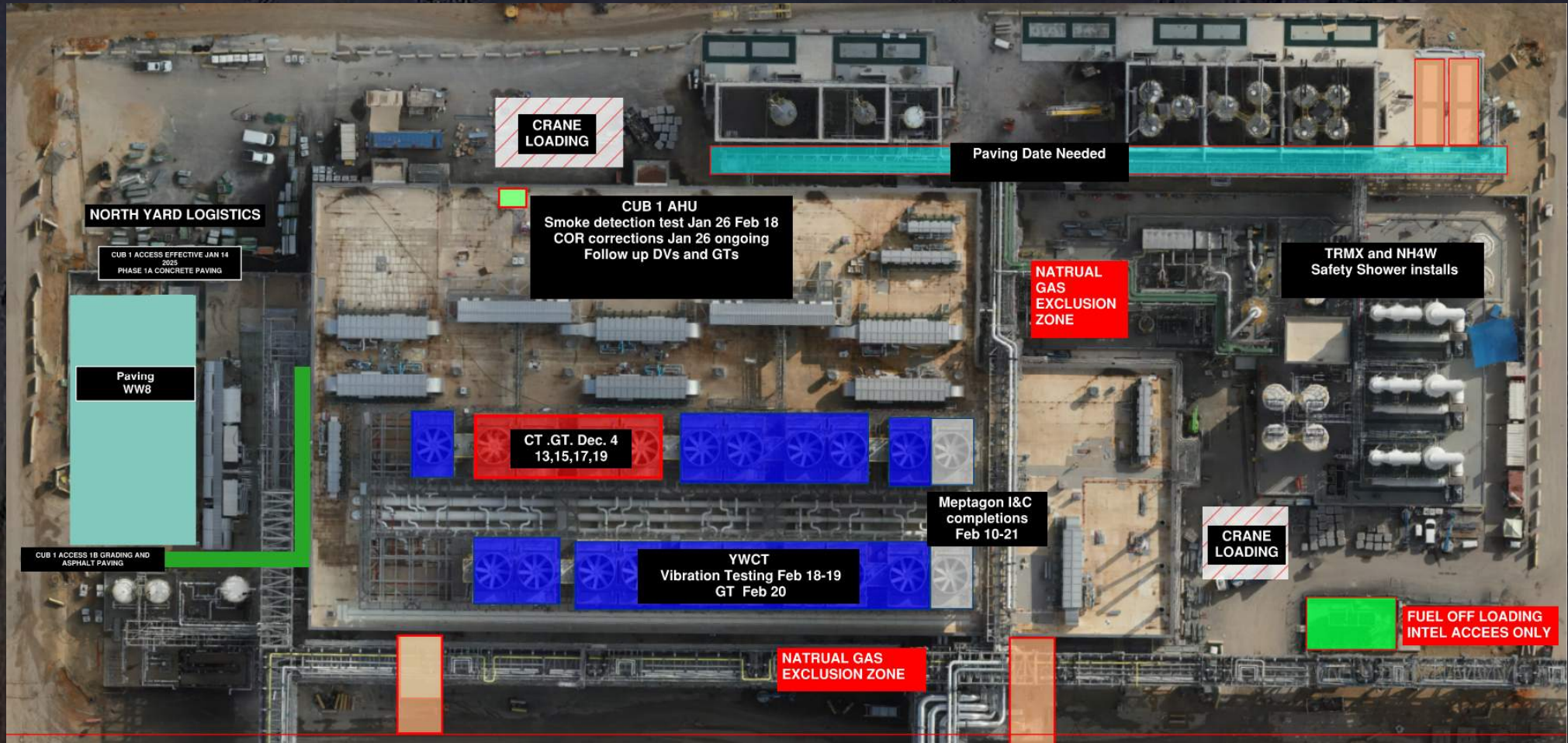
# CUB 1 Exterior Pre-Punch Status



1. North Elevation ROXTEC Electrical in Coordination with Elmor WW 8
2. West Elevation pending UN2 tie in, Blank out Conditioned water to CUB 2
3. Set Final Man door complete Access Controls March 6- 20
4. Light Fixtures ongoing West El.

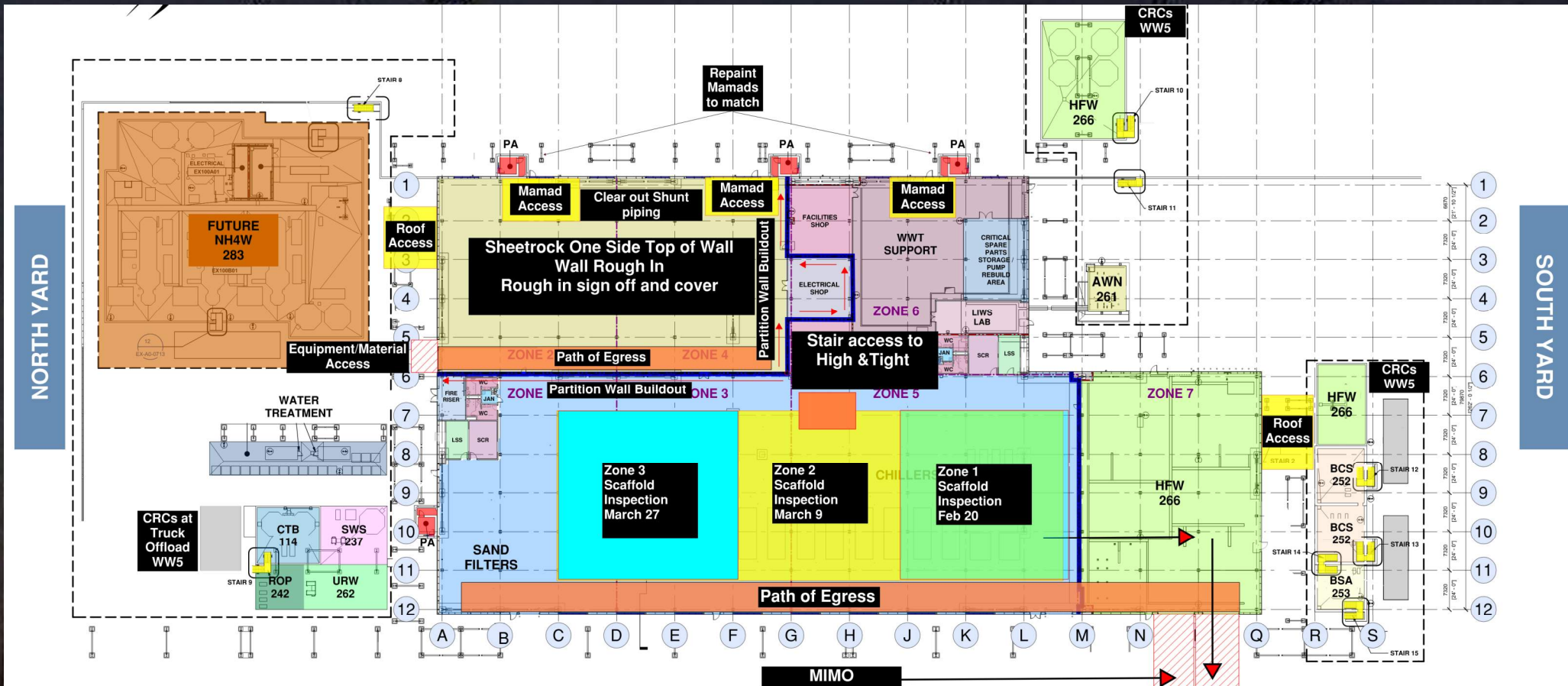


# CUB 1 – EXTERIOR/ROOF

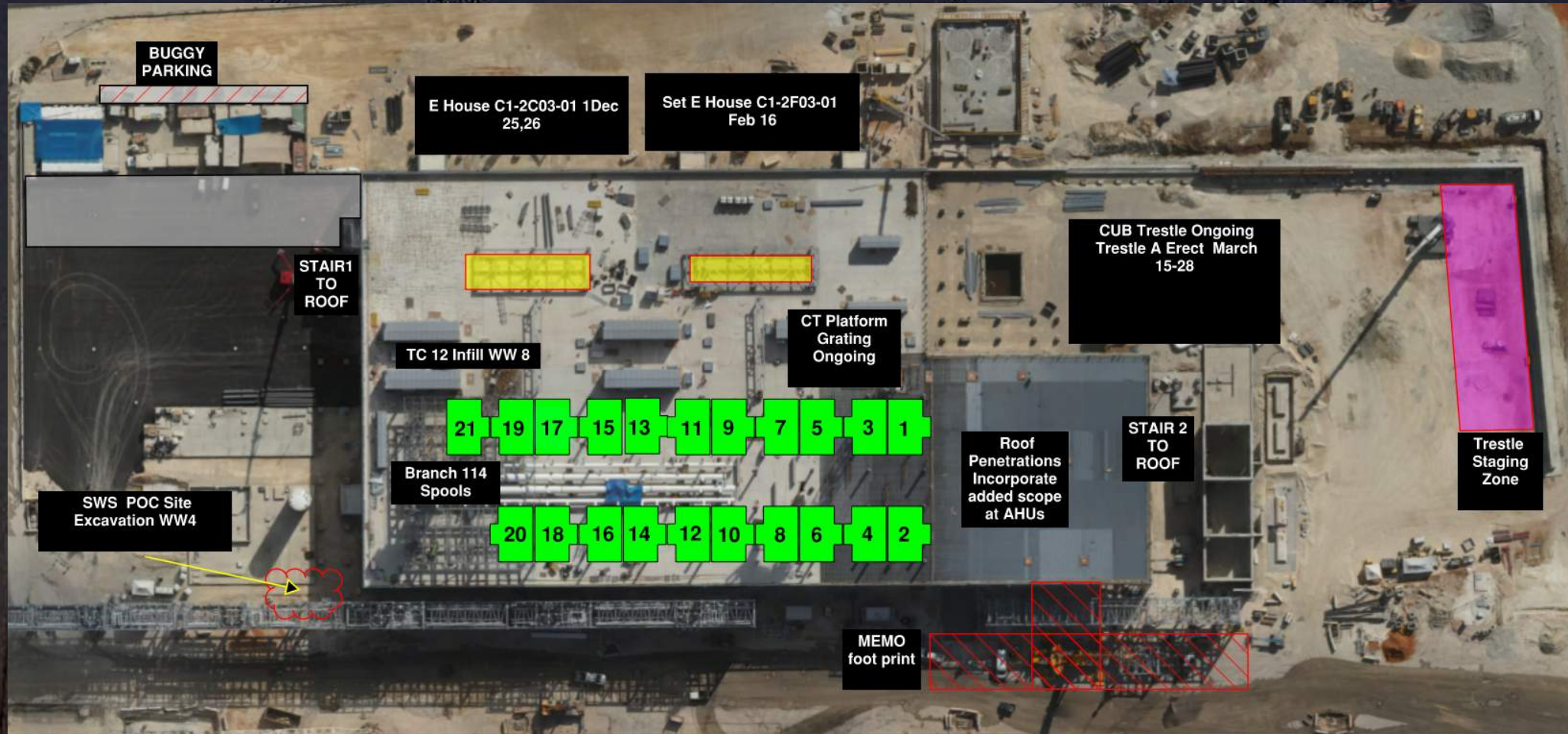


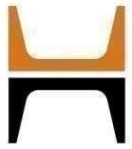


# CUB 2- Load in ,H&T, Framing and Sheetrock

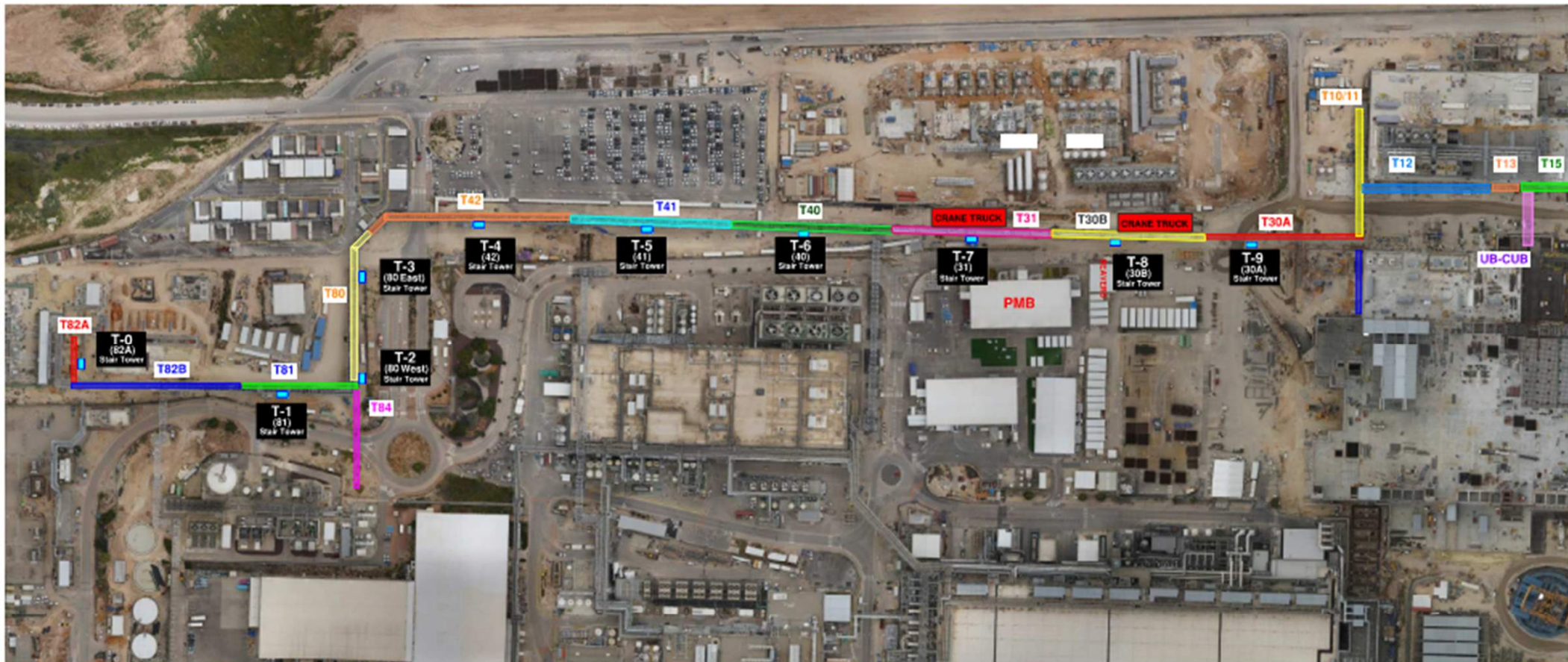


# CUB 2 – EXTERIOR/ROOF





**HOFFMAN CONSTRUCTION COMPANY**

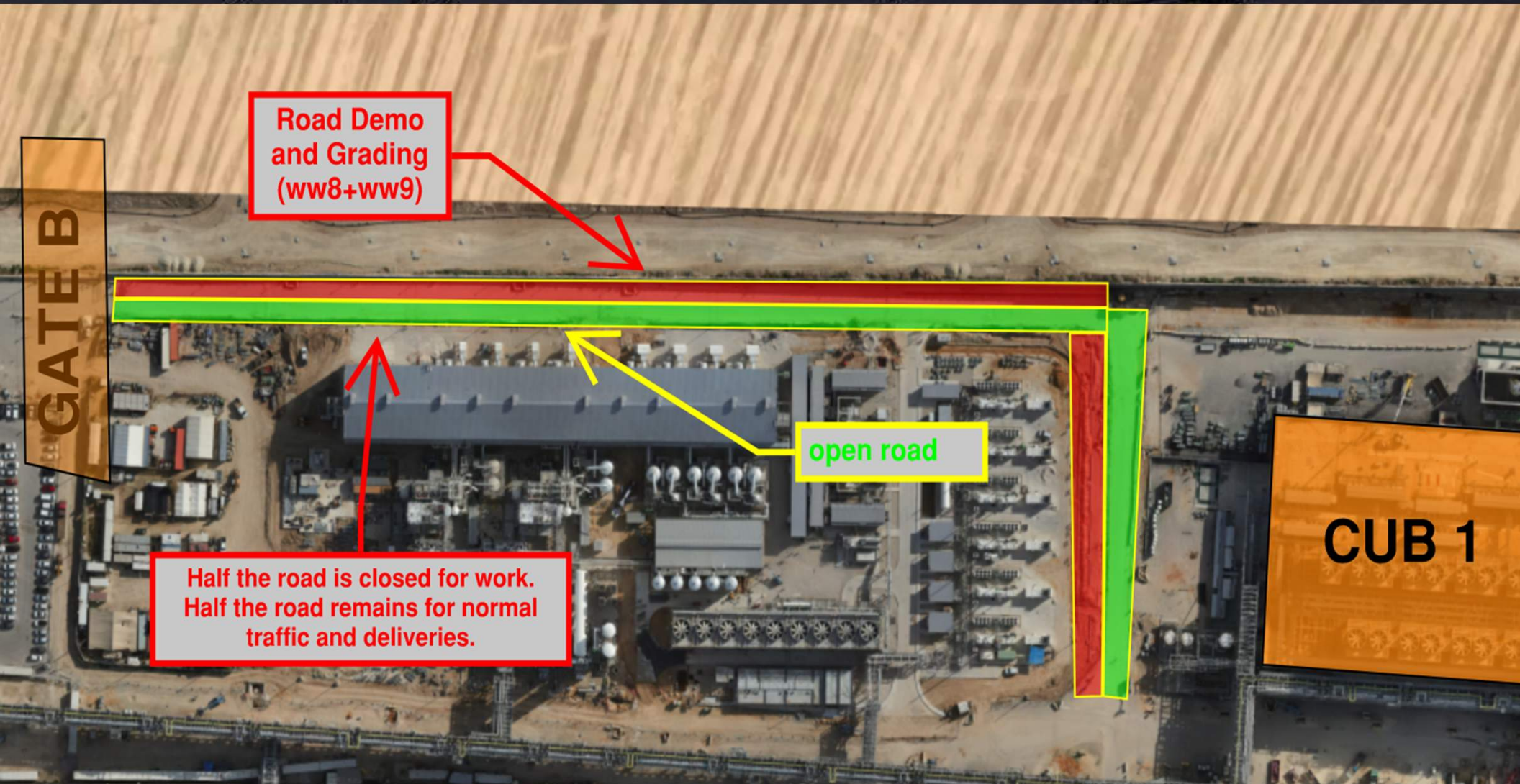




# Daily Coordination Meeting

Site Logistics

North





# Daily Coordination Meeting

## Site Logistics North





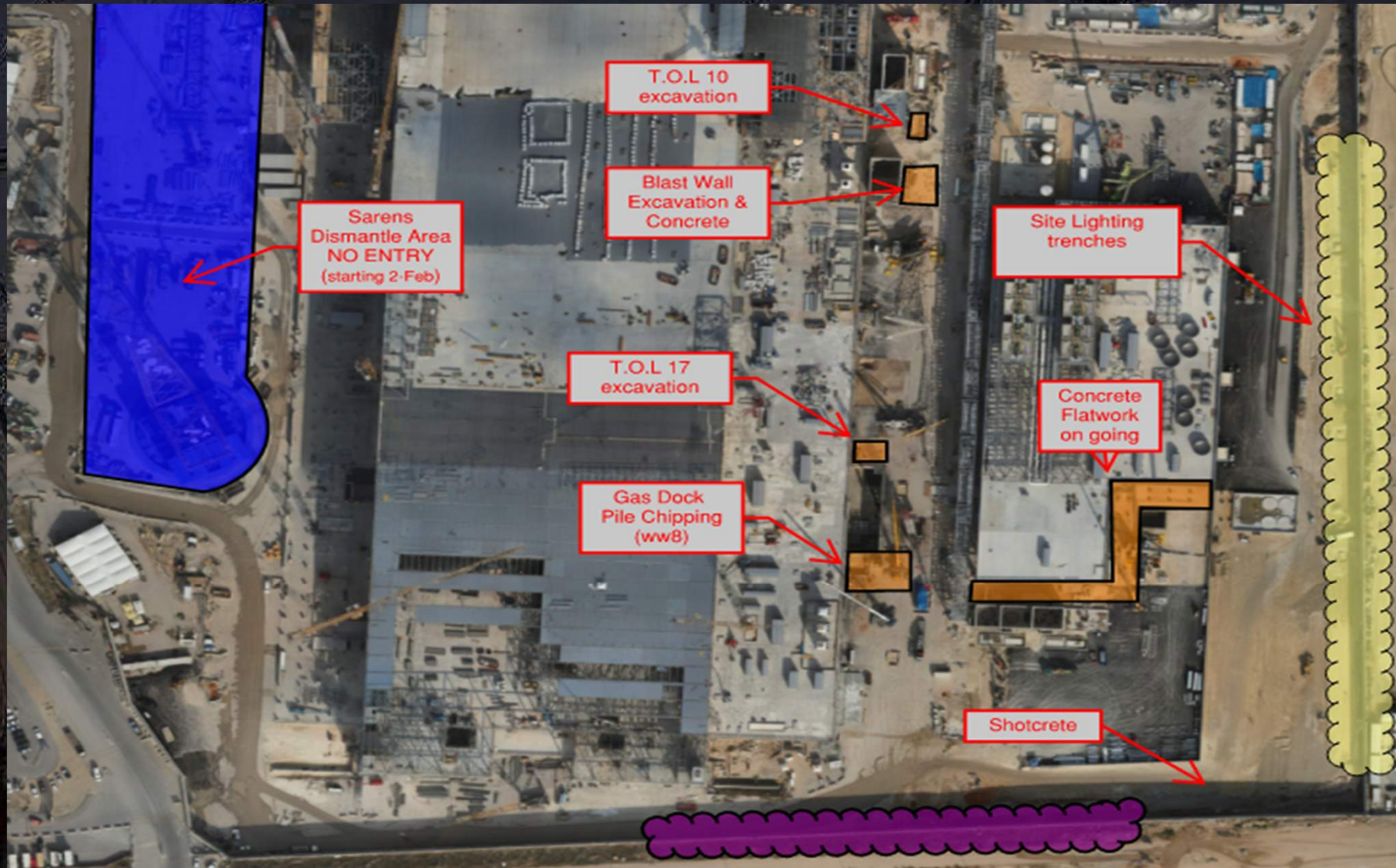
**HOFFMAN CONSTRUCTION COMPANY**



# Daily Coordination Meeting

Site Logistics

South



# Use of Scaffold

As everyone knows, there are 3 types of scaffolding tags on our site, each with a different meaning.

**Green Tag** – You can climb the scaffold without the need for a harness. The feet must **always** remain on the scaffold floor.

**Yellow Tag** – You can climb the scaffold only with a harness, and 100% tie-off must be always maintained while working on the scaffold.

**Red Tag** – The scaffold is closed for climbing or passage.

Additionally, in all the above situations, it is important to note that no part of your body should be placed or stand on the scaffold, neither your feet nor your hands.



# Extreme Cold

A reminder to everyone, the weather next week is expected to be unusually cold. Workers should be prepared to come with warm clothing for work.

24/02 | שני

4<sup>UV</sup><sub>MAX</sub>  0°-2°

23/02 | ראשון

3<sup>UV</sup><sub>MAX</sub>  1°-6°

# Daily Coordination Meeting



14:00 Sign In