

Daily Coordination Meeting

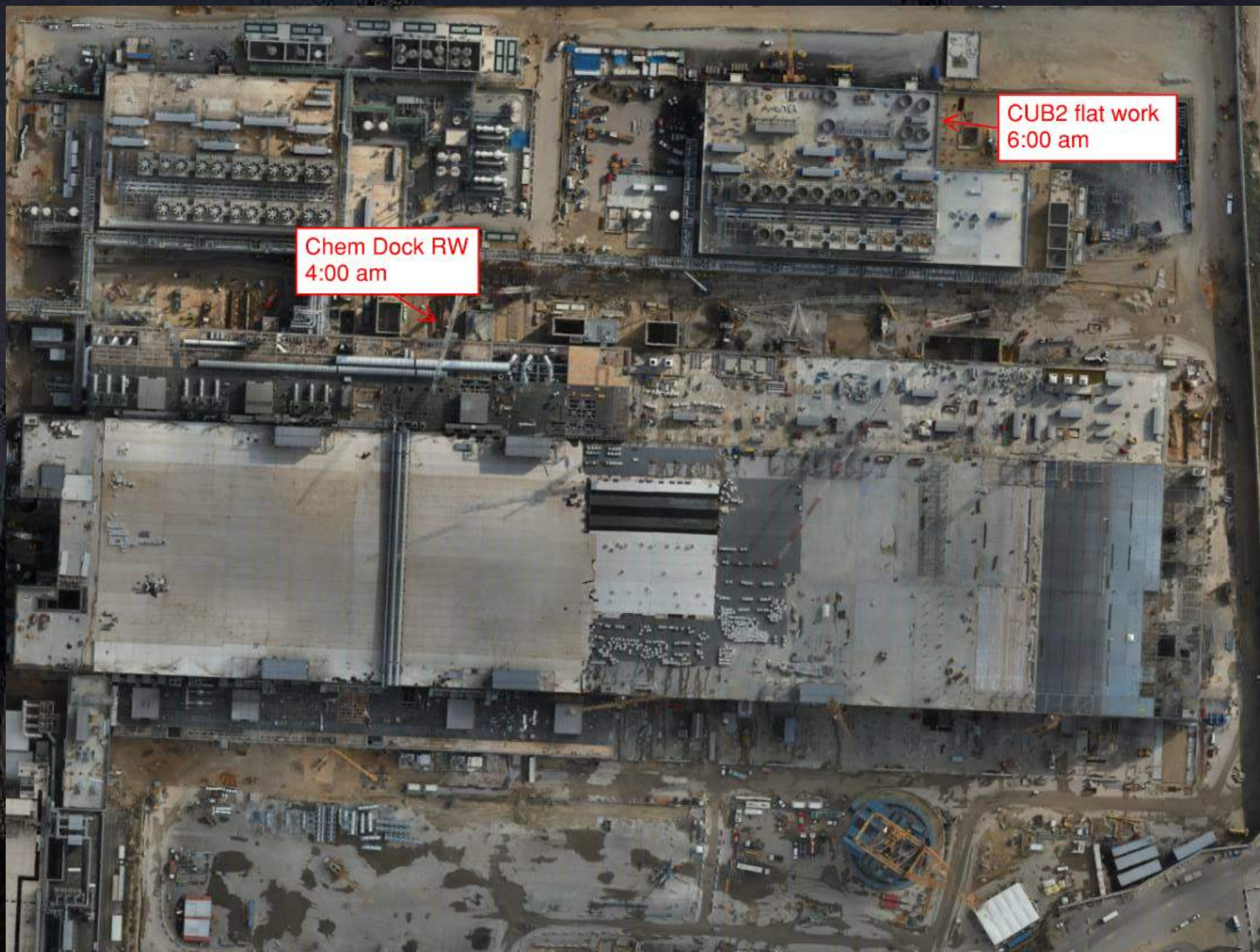


14:00 Sign In

Daily Coordination Meeting

General Topics:

- Assume all systems are live



Chem Dock RW
4:00 am

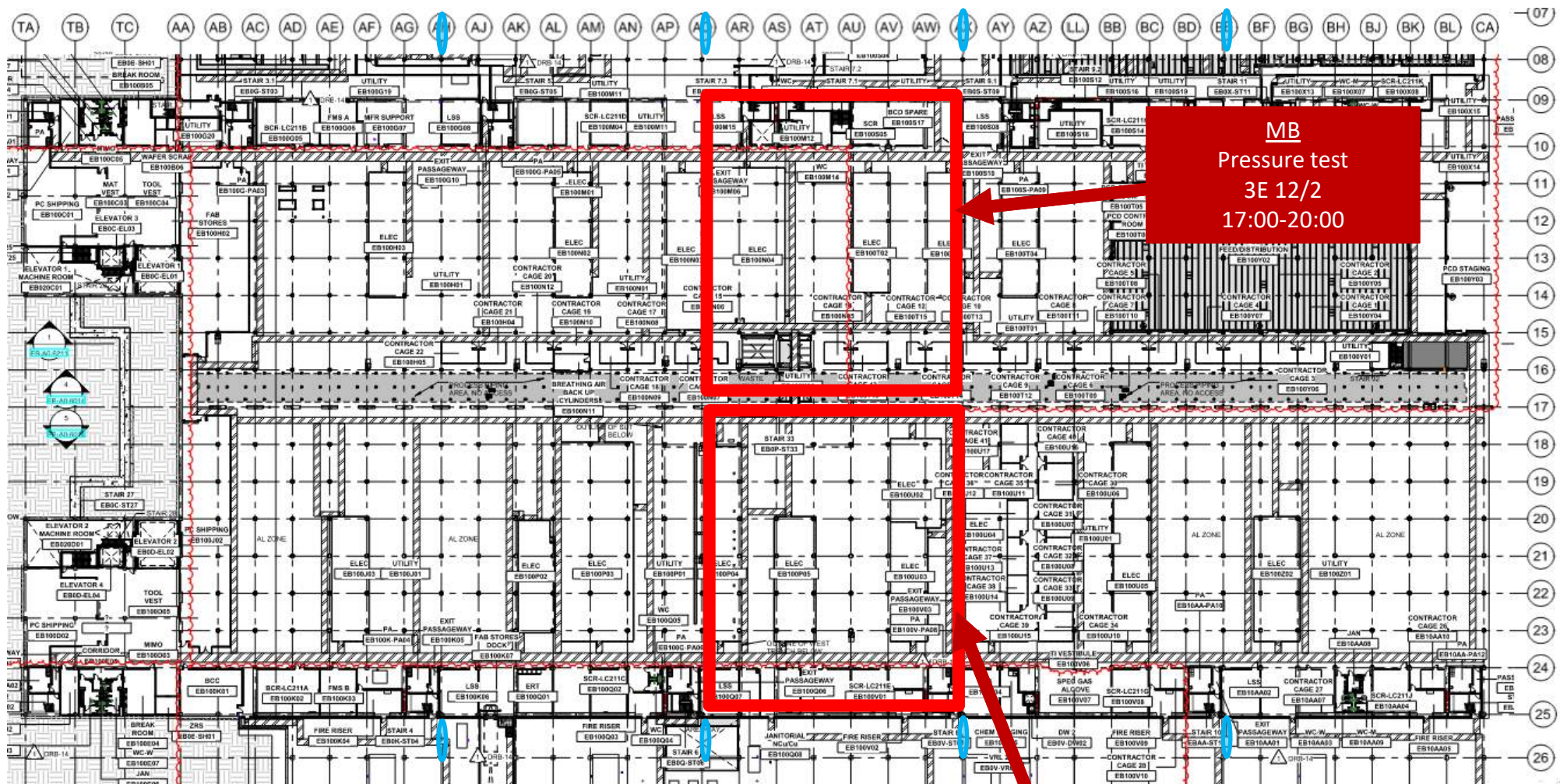
CUB2 flat work
6:00 am



ELRAM
 Ars Vac room
 PCD Bathtub
 PCD Staging
 TTNW WC's
 5W Studs WC's

HEATCOIL REPL.
 Taper Tech Finish
 MEP GO!

Pressure test M.B



MB
Pressure test
3E 12/2
17:00-20:00

MB
Pressure test
3W 11/2
17:00-20:00



Utility Level MOD2

Don't bring any material without coordination with Oscar M.

Stagging material is possible but must be coordinated and must follow the rules (no combustibles, nothing touch the floor ETC.)

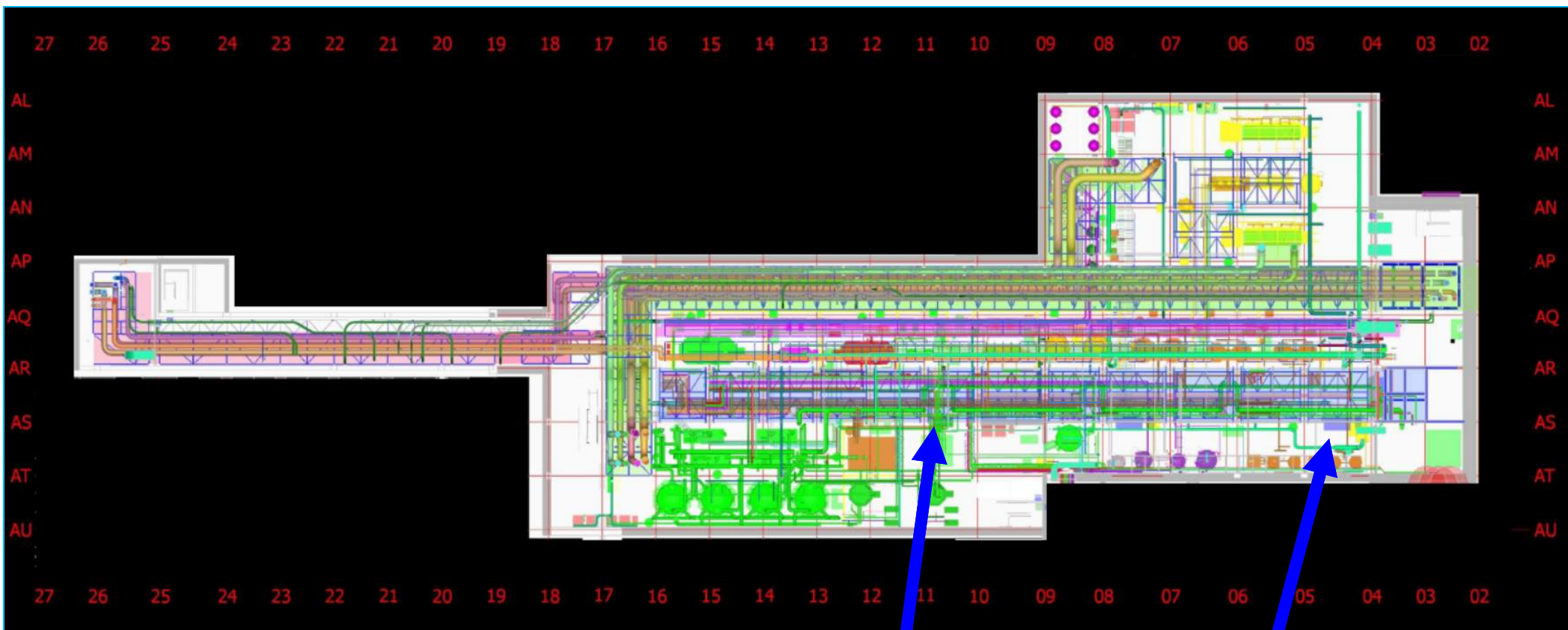
Thanks.

Don't bring any material without coordination with Oscar M.

Staggering material is possible but must be coordinated and must follow the rules (no combustibles, nothing touch the floor ETC.)

Thanks.

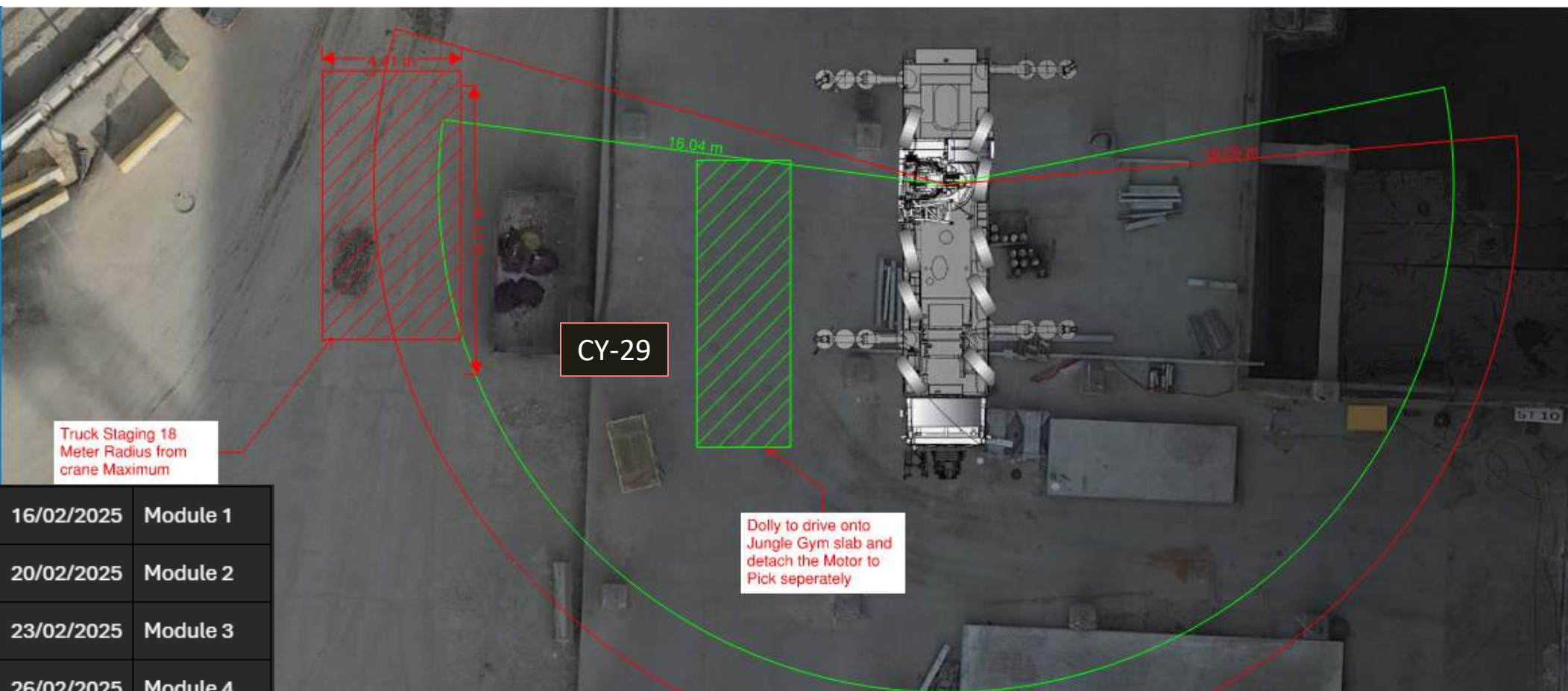
SUT 38.1 LEVEL



Biocide
Ready for
Totes set.

SOG
Ready for
Totes set.

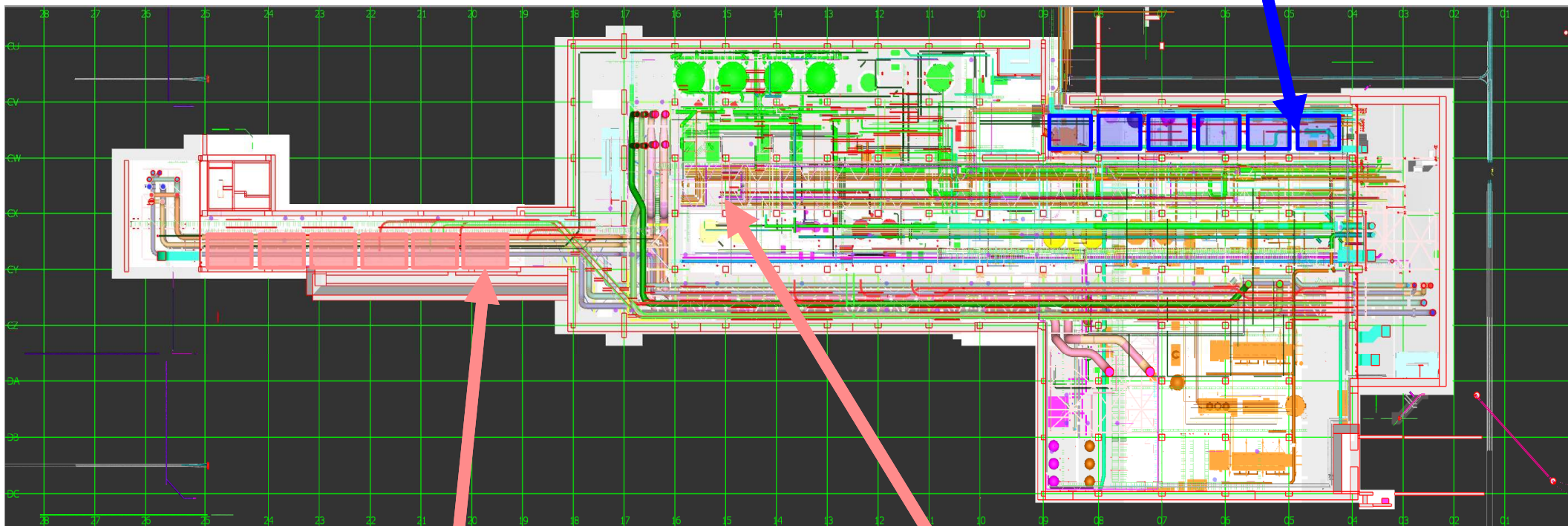
West SUT2 Rack 6



16/02/2025	Module 1
20/02/2025	Module 2
23/02/2025	Module 3
26/02/2025	Module 4
02/03/2025	Module 5
04/03/2025	Module 6

SUT 38.2 LEVEL

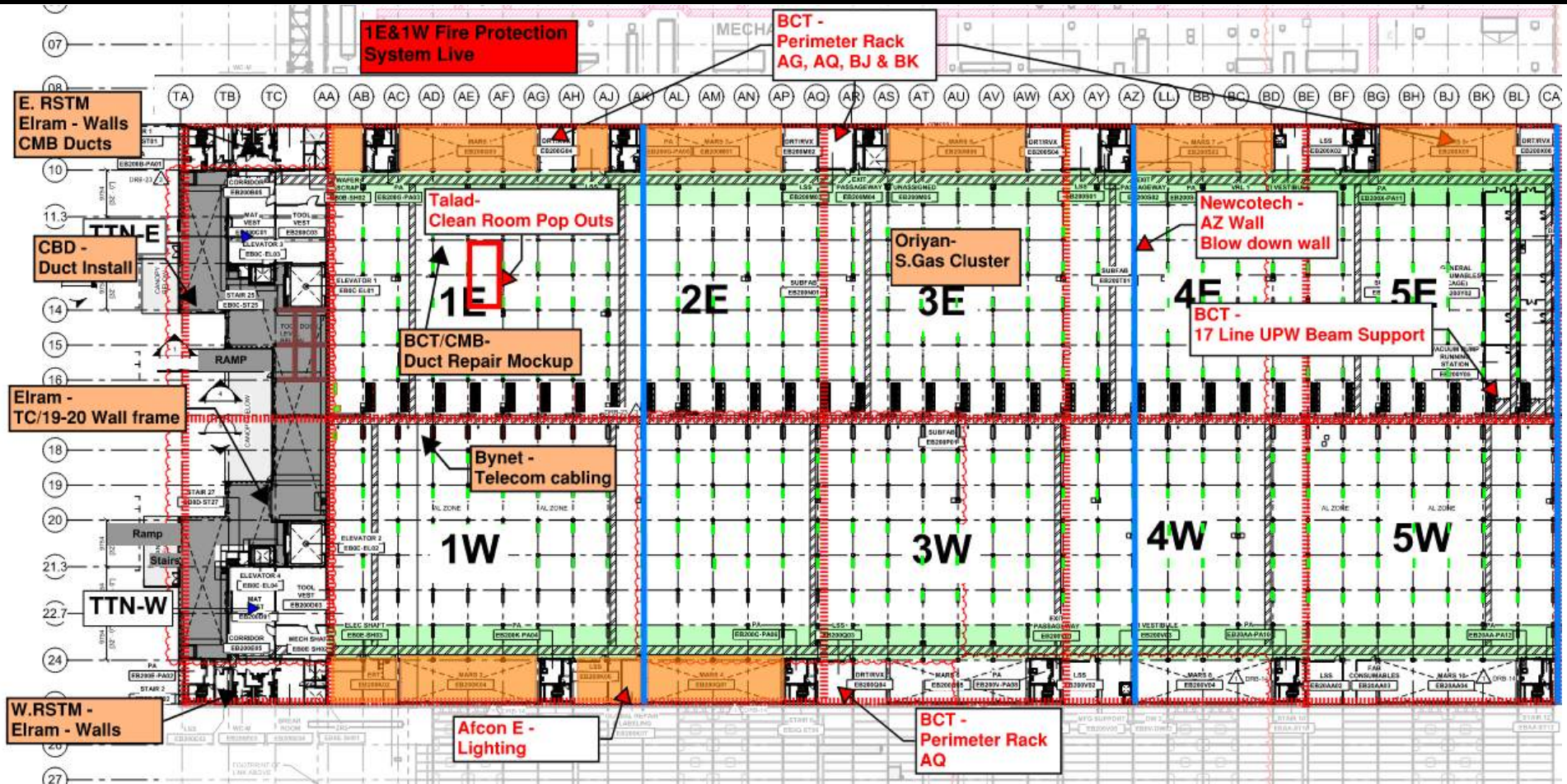
Rack 4b
Inter
Connection's



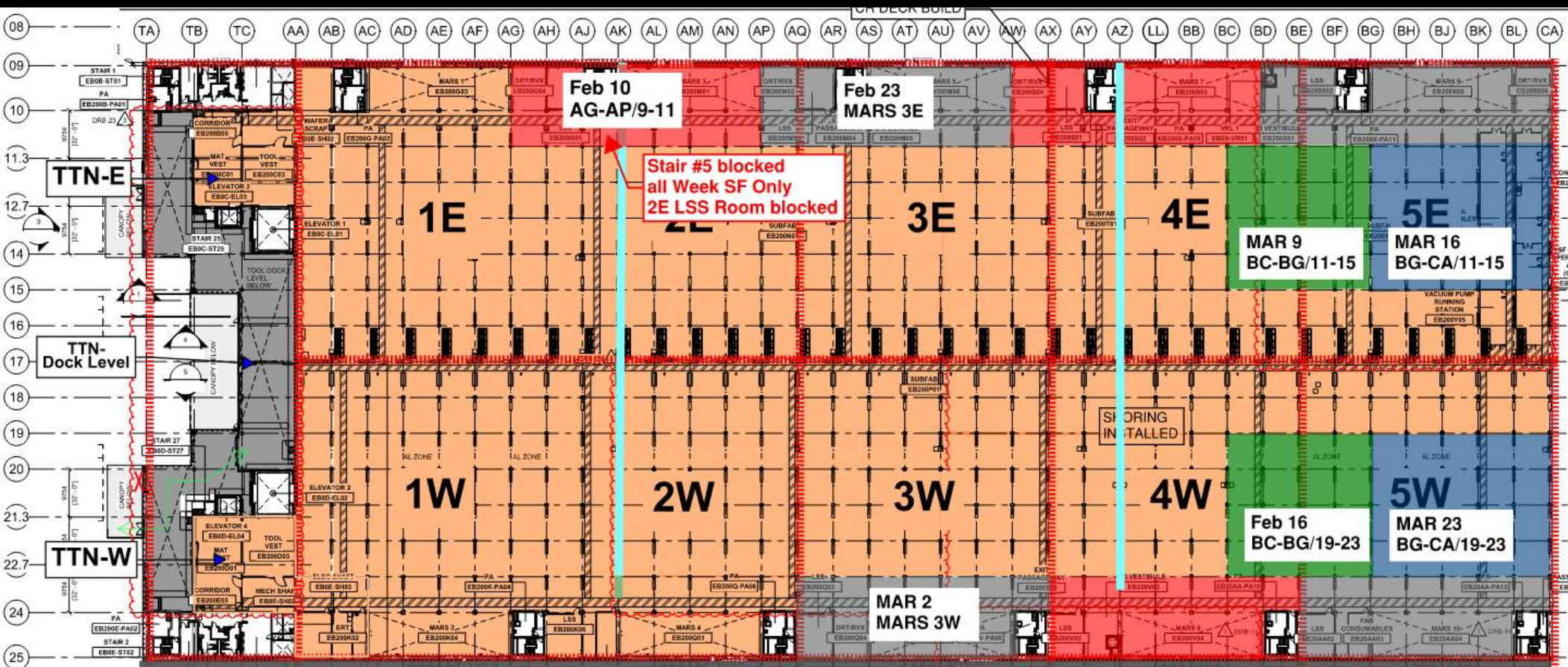
Rack 6
MIMO -
Module #1
16.2.25

Temp stairs
relocation

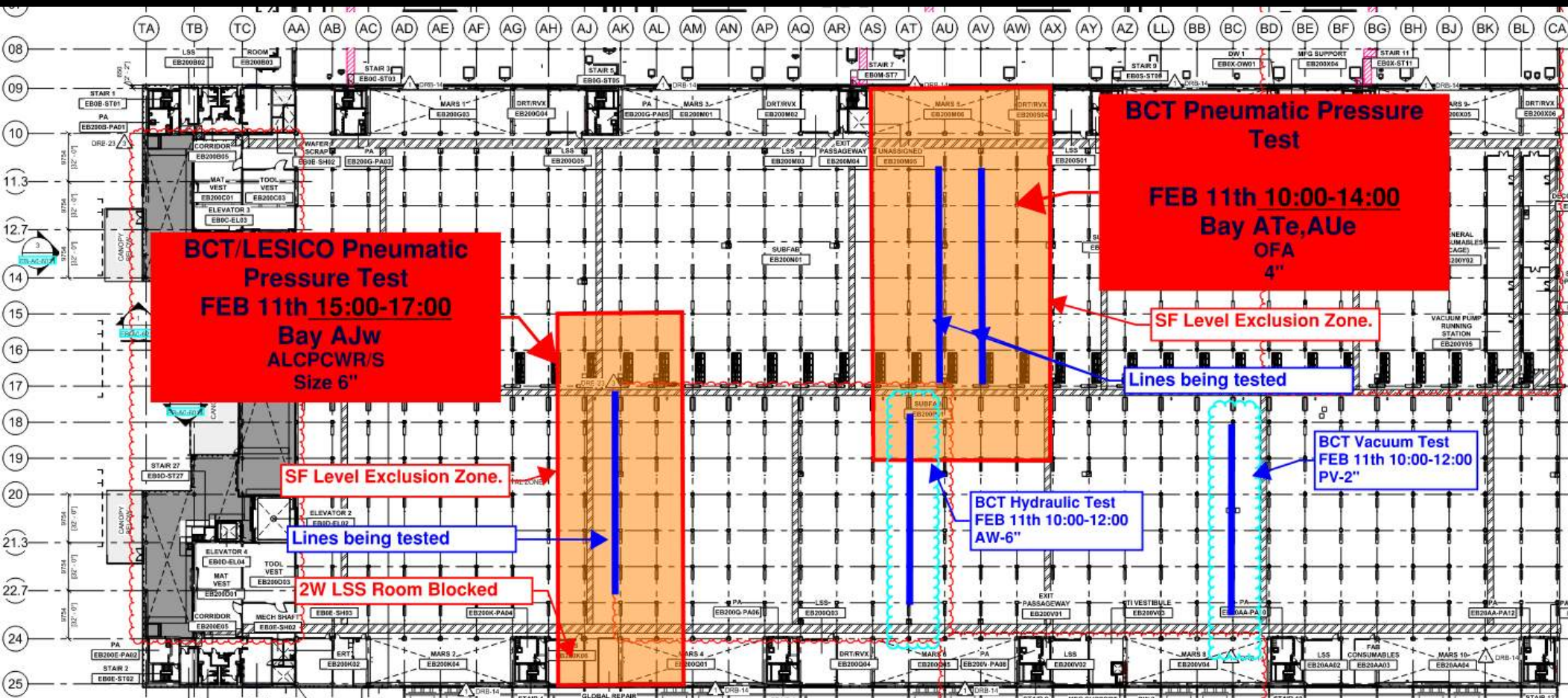
SUBFAB BUILDOUT MOD 1



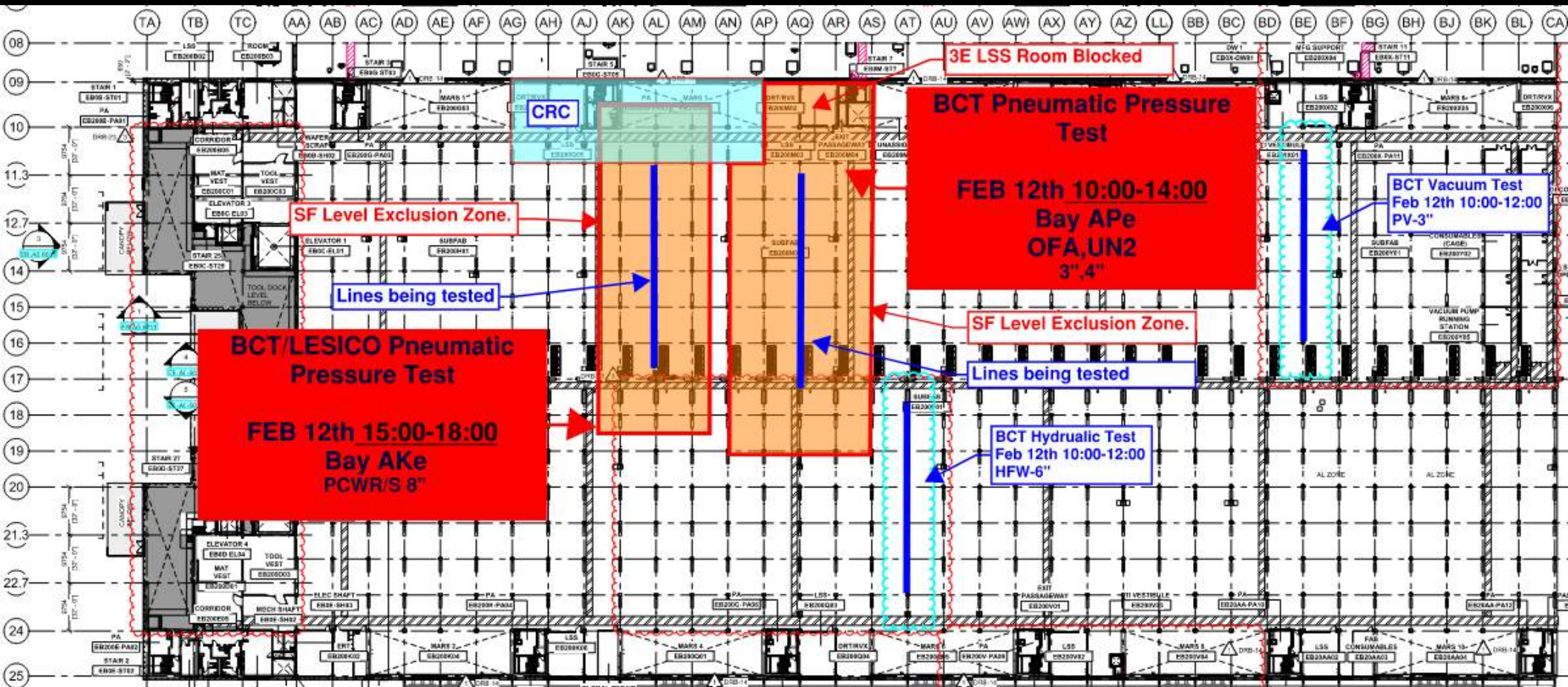
SUBFAB CRC TOPCOAT



BCT Pressure Tests Today



BCT Pressure Tests Tomorrow

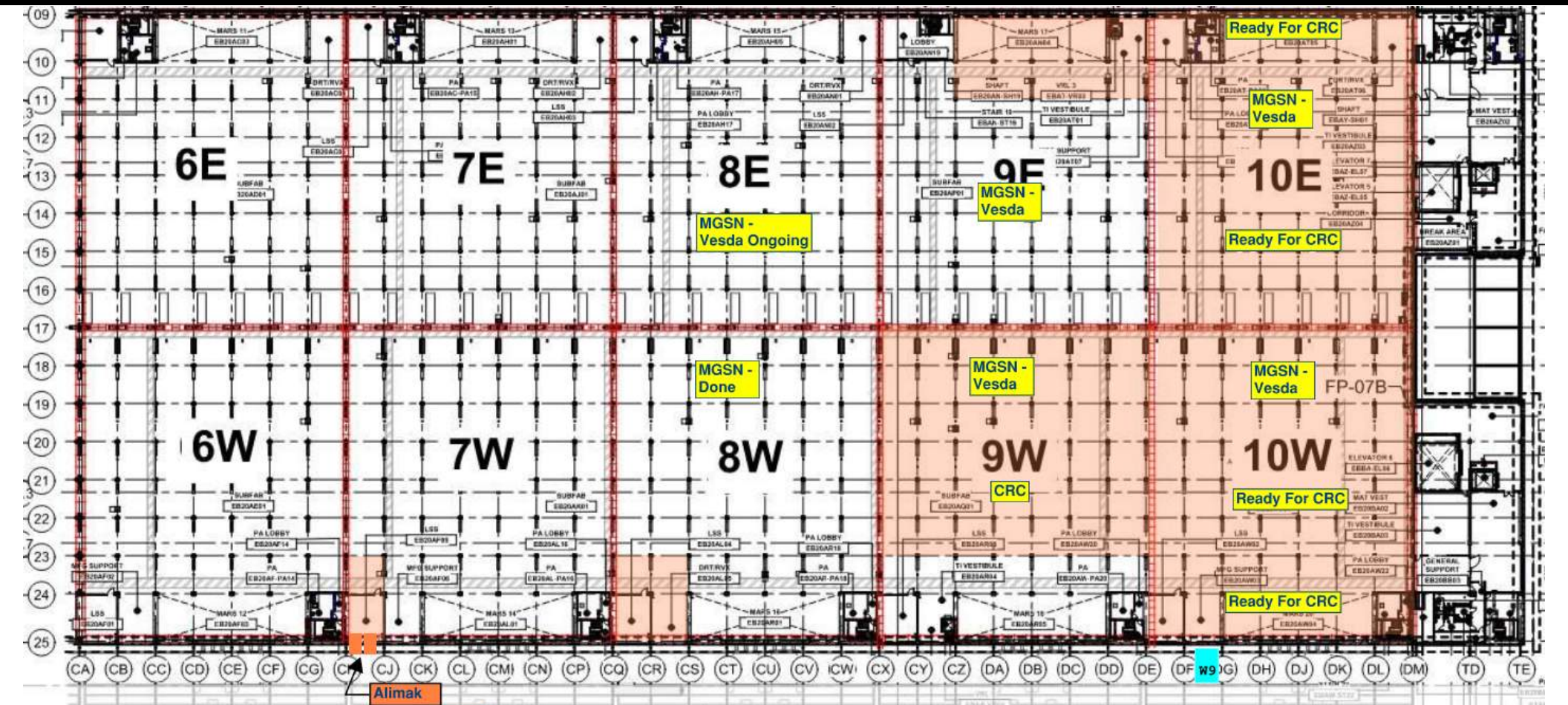


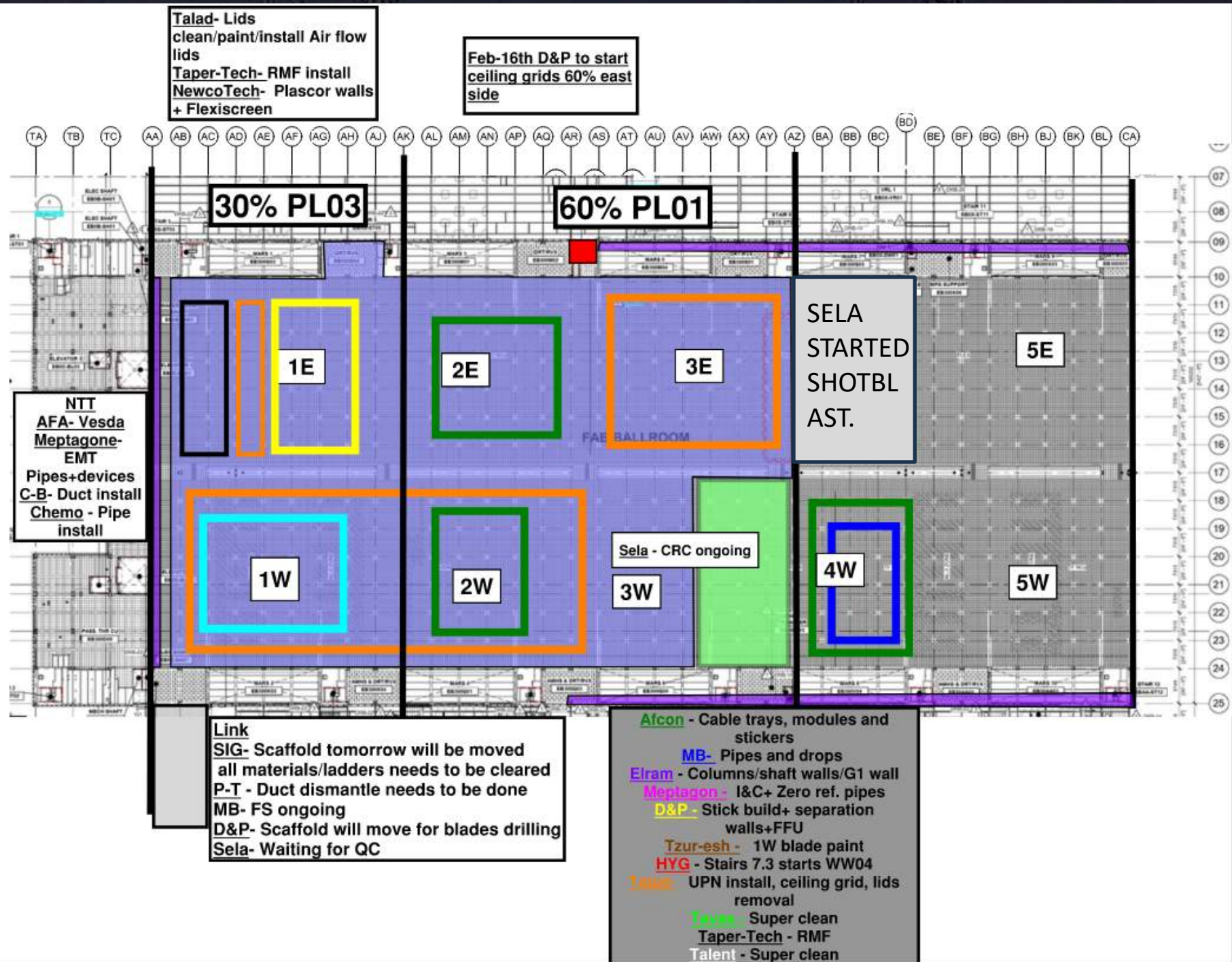
LESICO NDT Test
FEB 12th 17:00-13th 05:00
Bay AS,AT
UN2
Size 4",6"

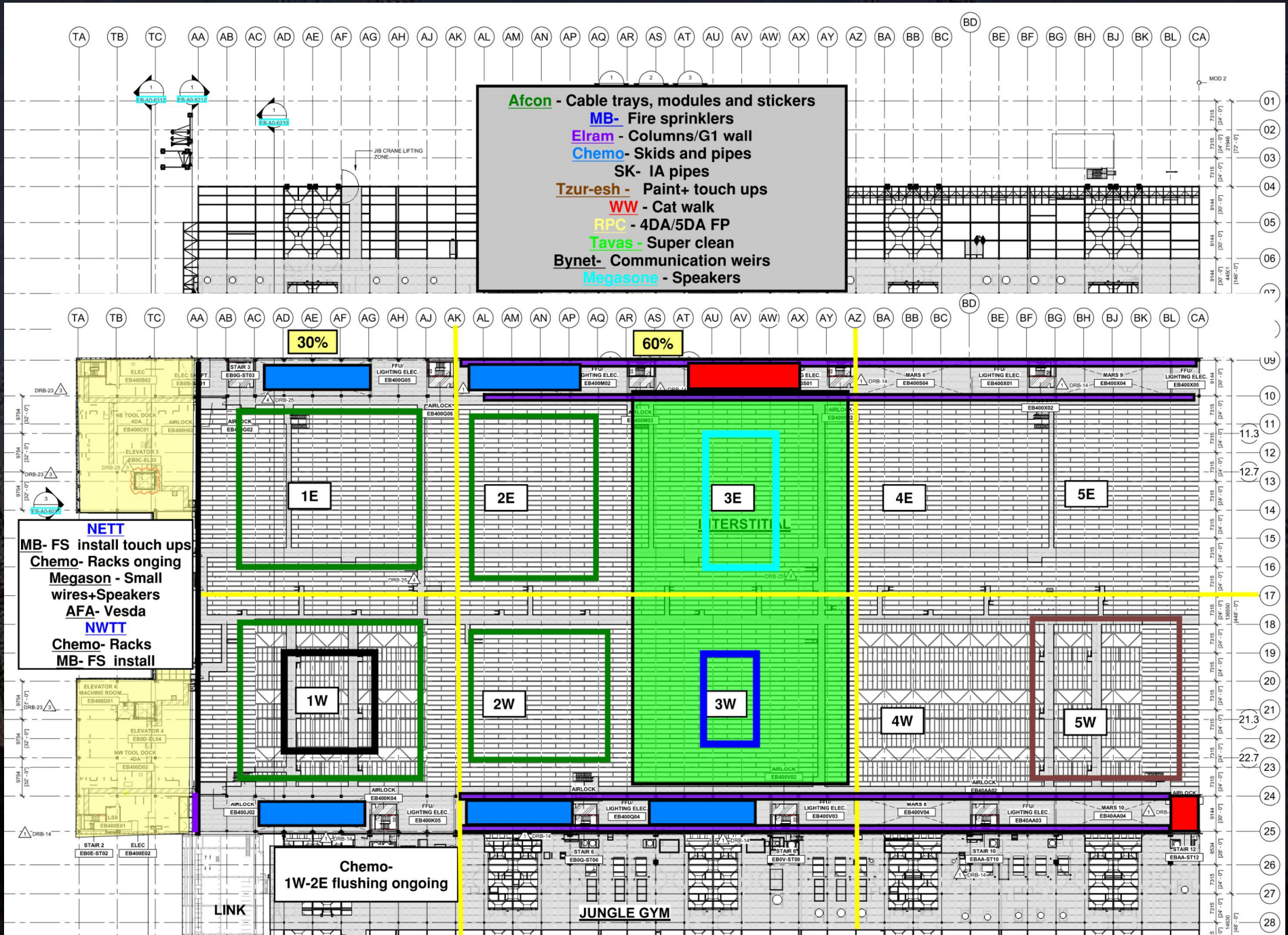
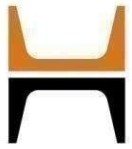
SF Level Exclusion Zone.

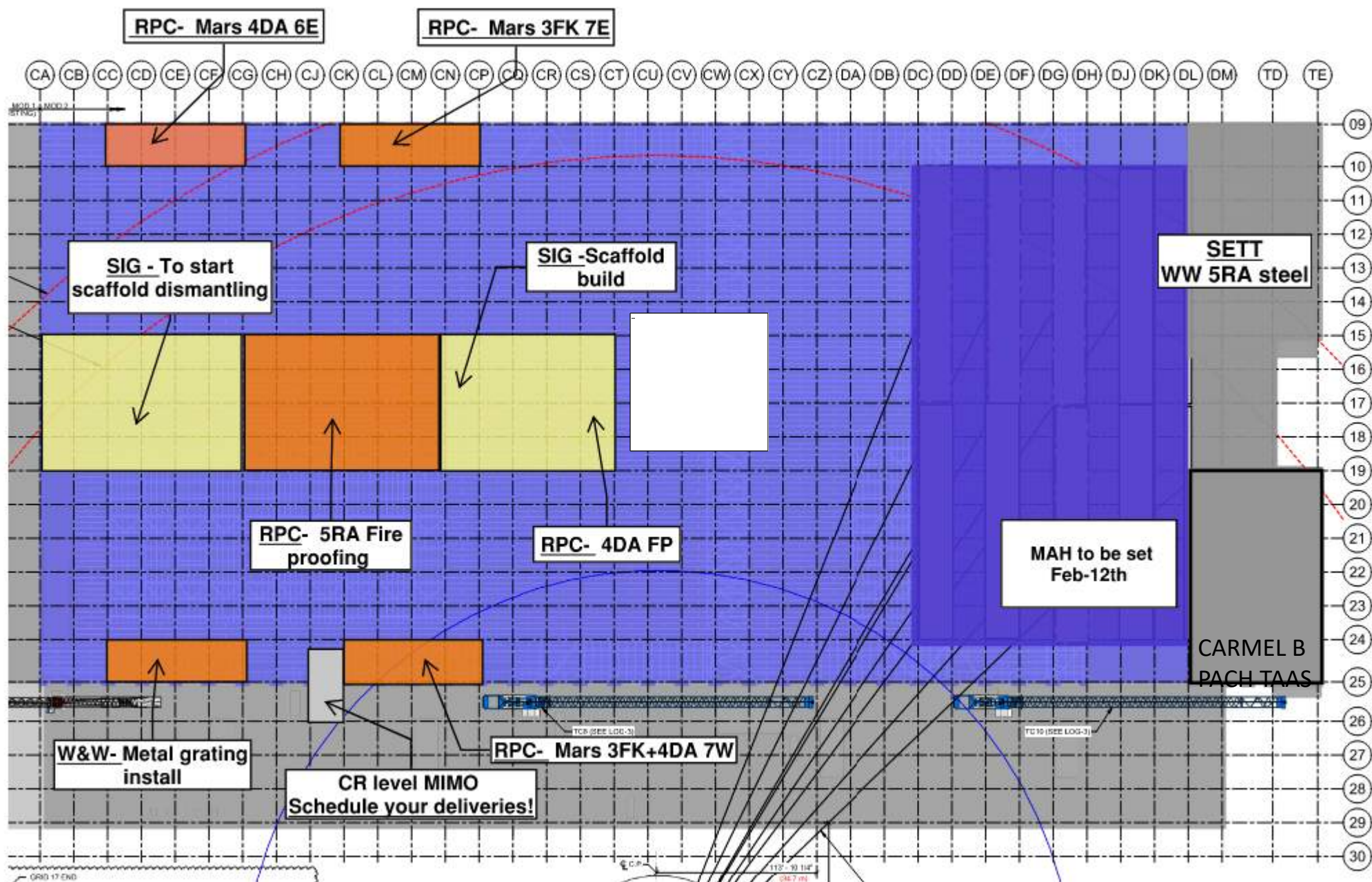
Lines being tested

SUBFAB BUILDOUT MOD 2









Clean Room Wall Of Shame

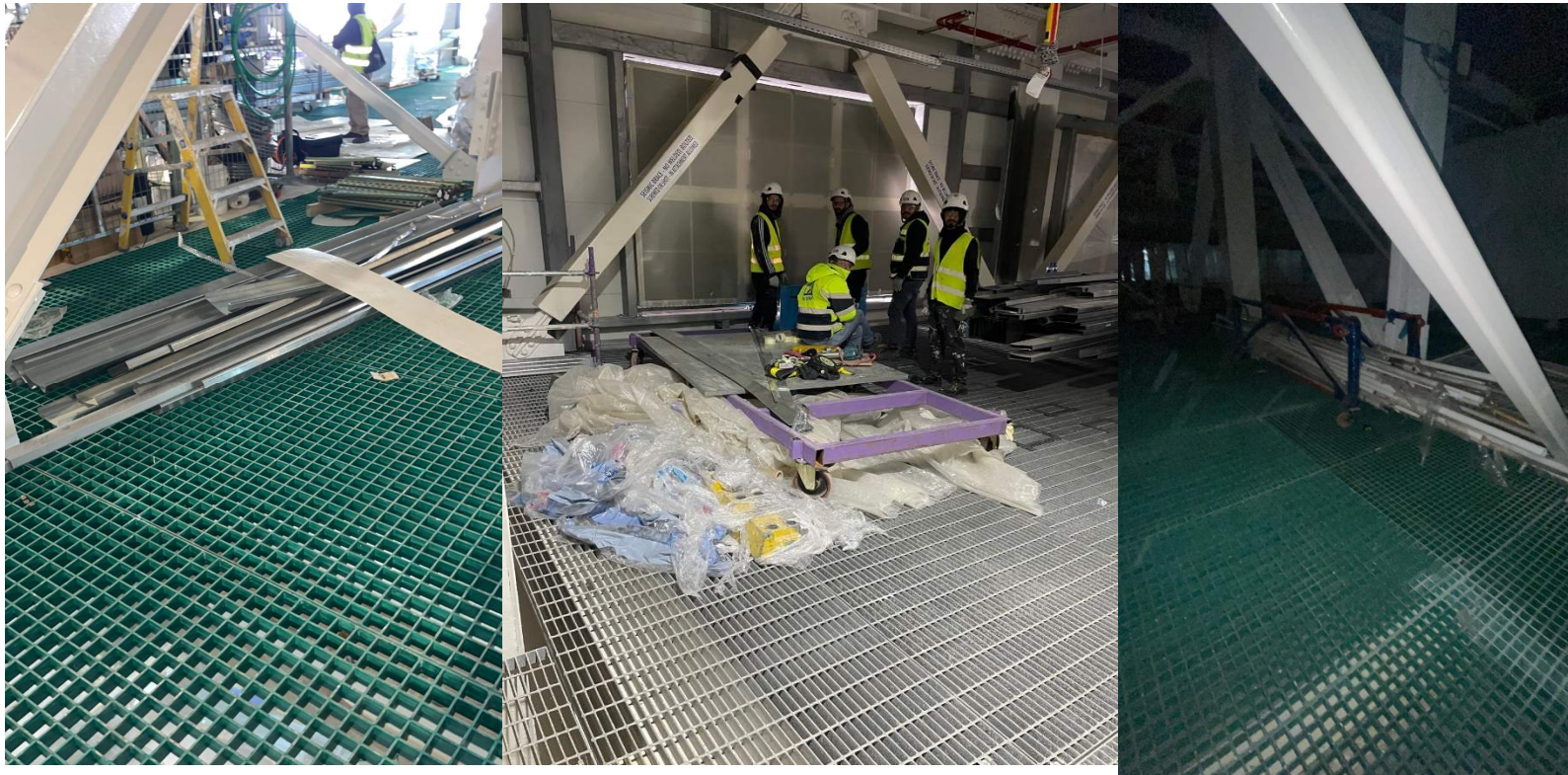
AFCON

ETC

Pach-taas

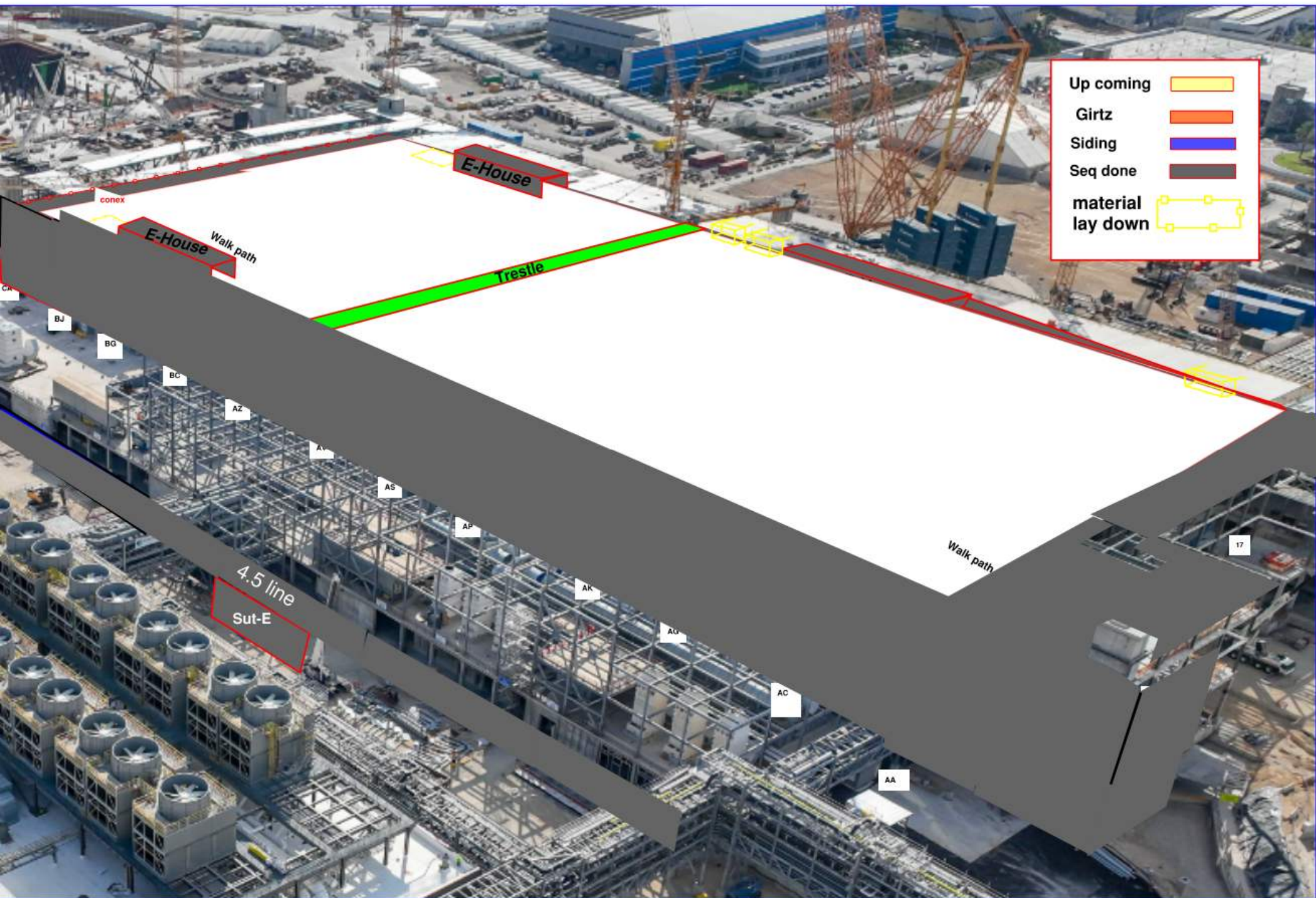


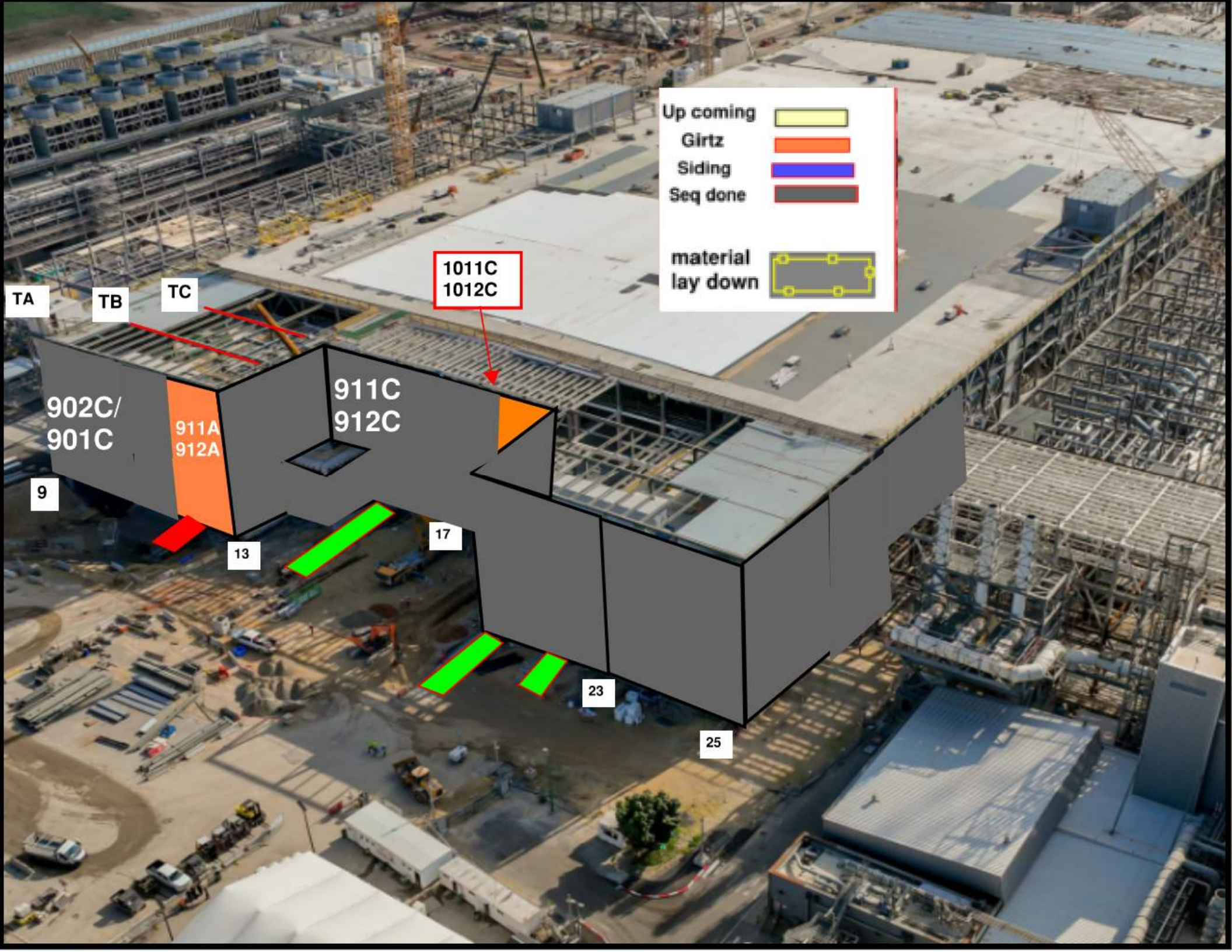
Clean Room Wall Of Shame








Alimak Shut Down
night Shift
Sunday + Monday
FEB/11~12
from 16:00 p.m till 05:00 a.m




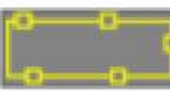


Up coming 

Girtz 

Siding 

Seq done 

material lay down 

1011C
1012C

TA

TB

TC

902C/
901C

911A
912A

911C
912C

9

13

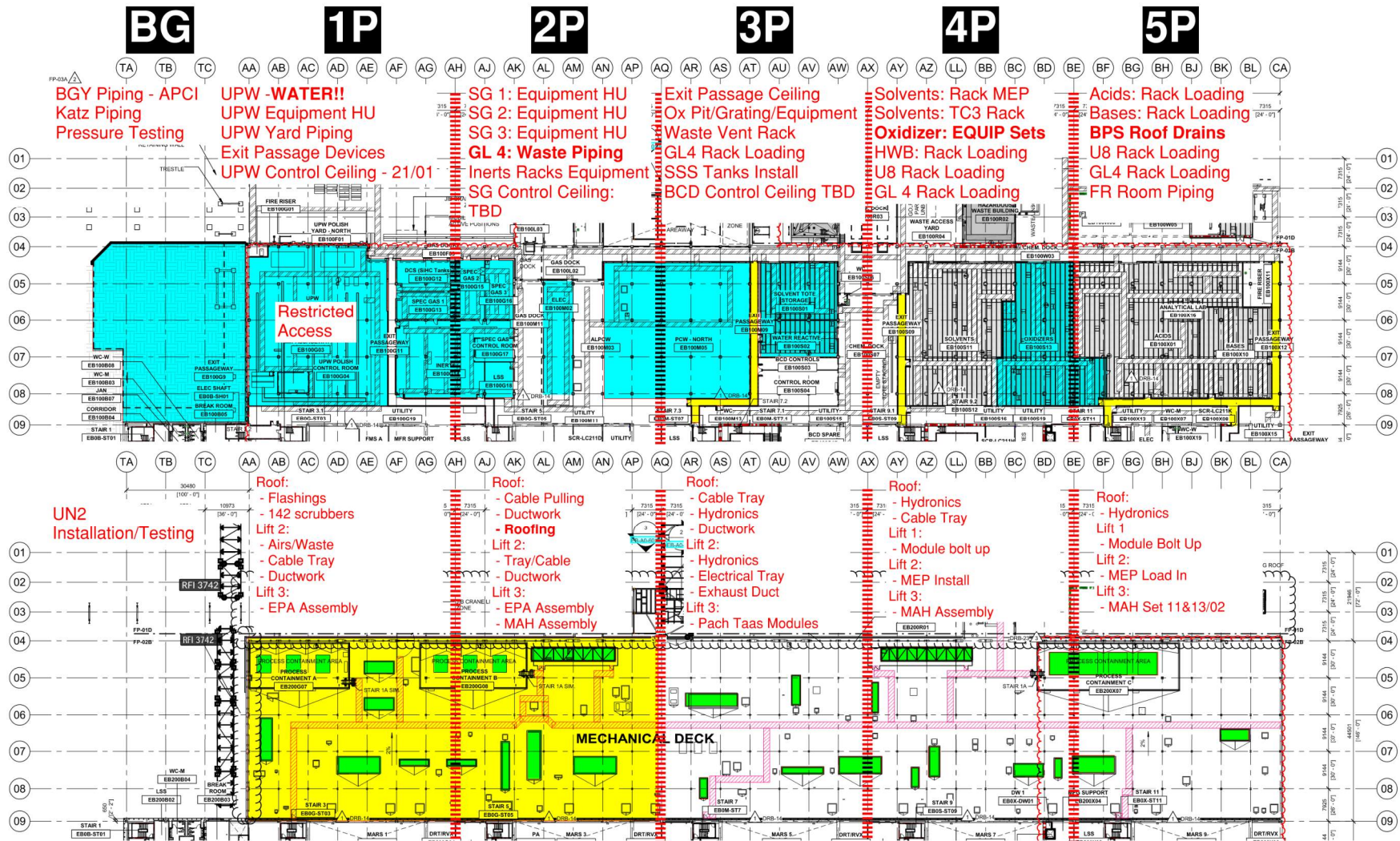
17

23

25

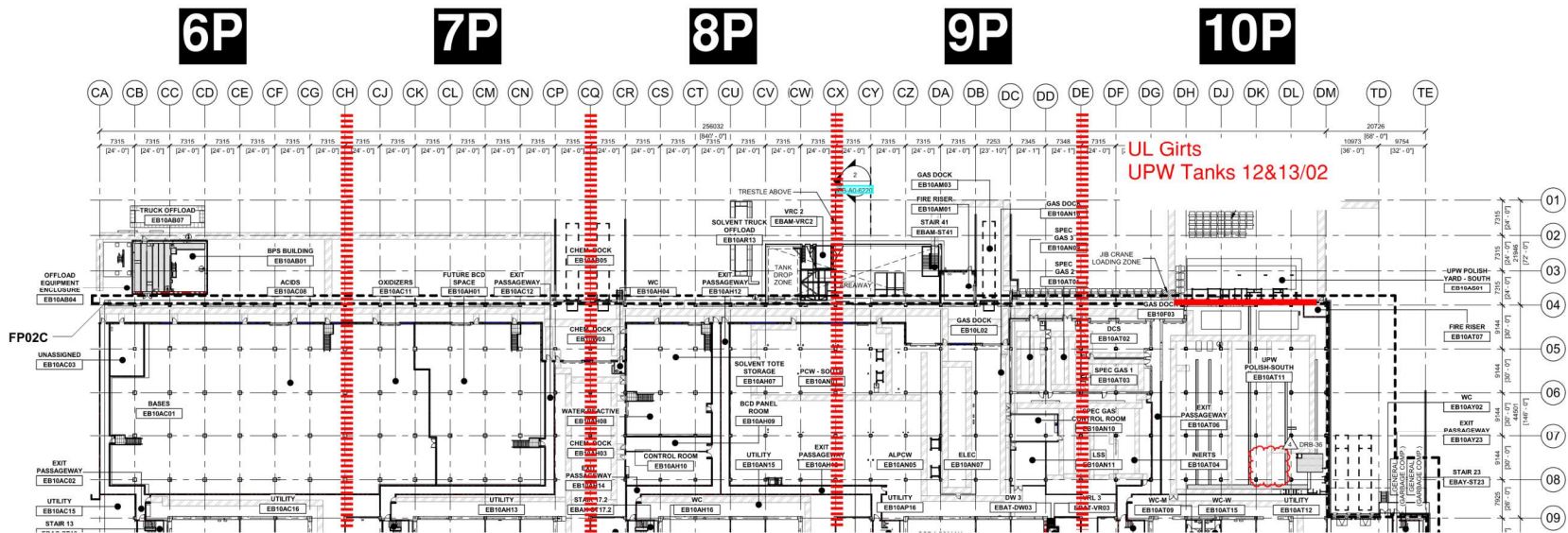


PSSS.1

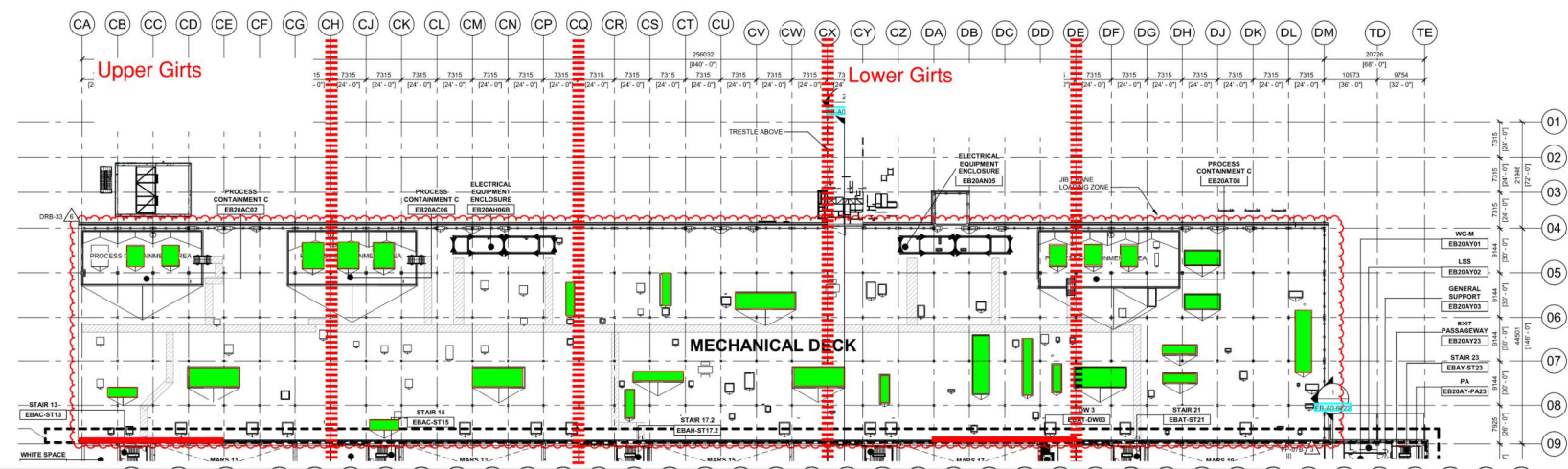


PSSS.2

Utility Level
1YA



PSSS Roof
2SA



PSSS Pressure Tests

BG

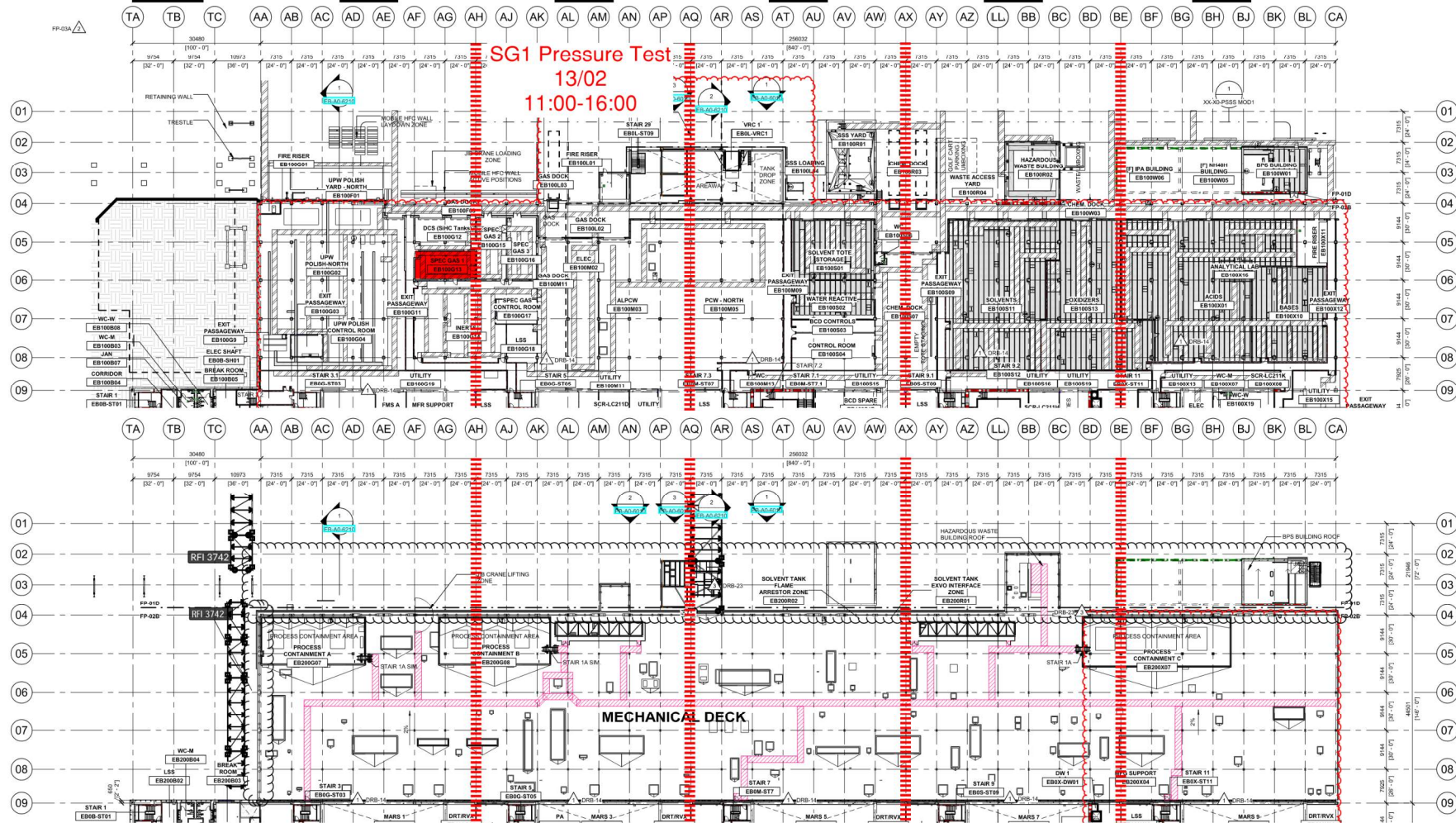
1P

2P

3P

4P

5P



Utility Level
1YA

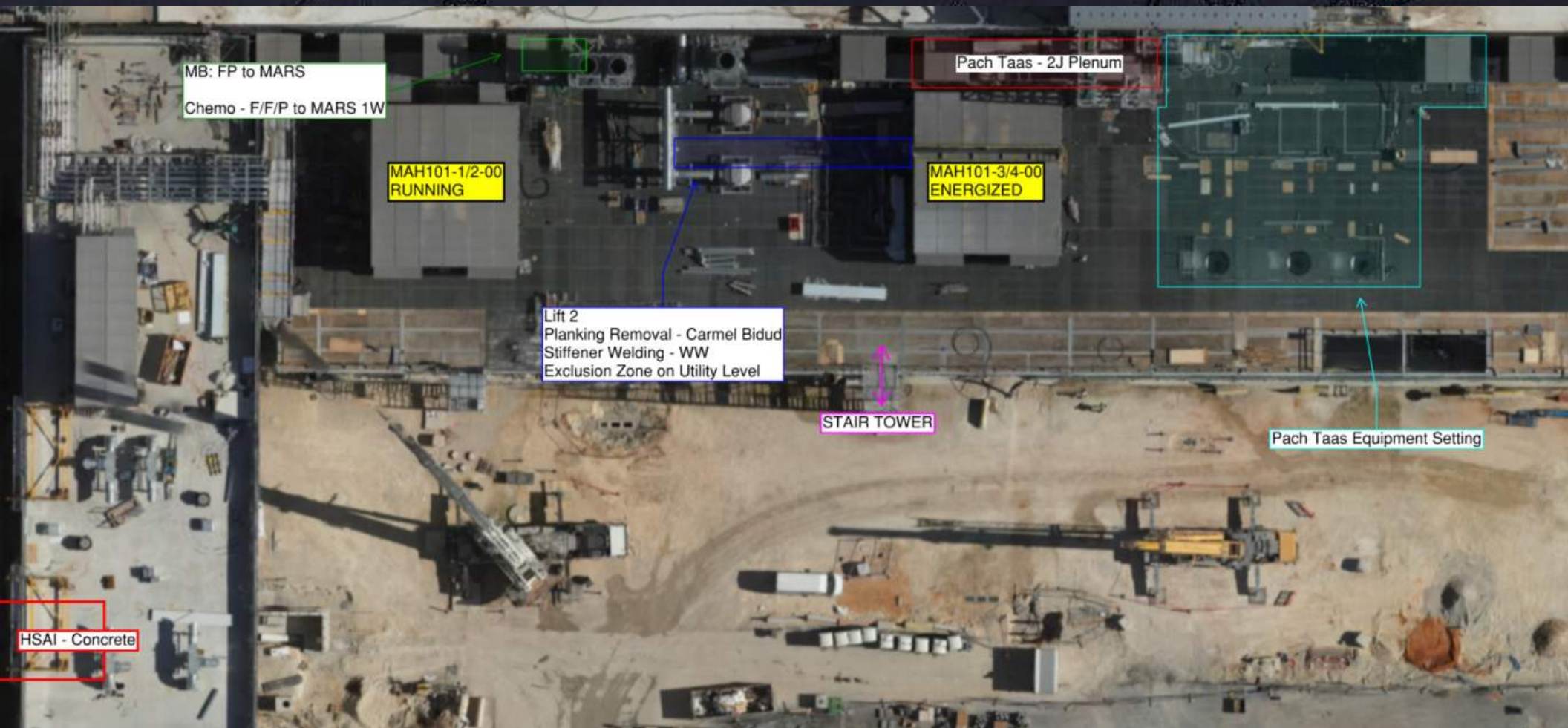
PSSS Roof
2SA

MOD2 UPW Tank Delivery 11/02



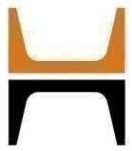


WJG 01J, 02J LIFT 2 & 3

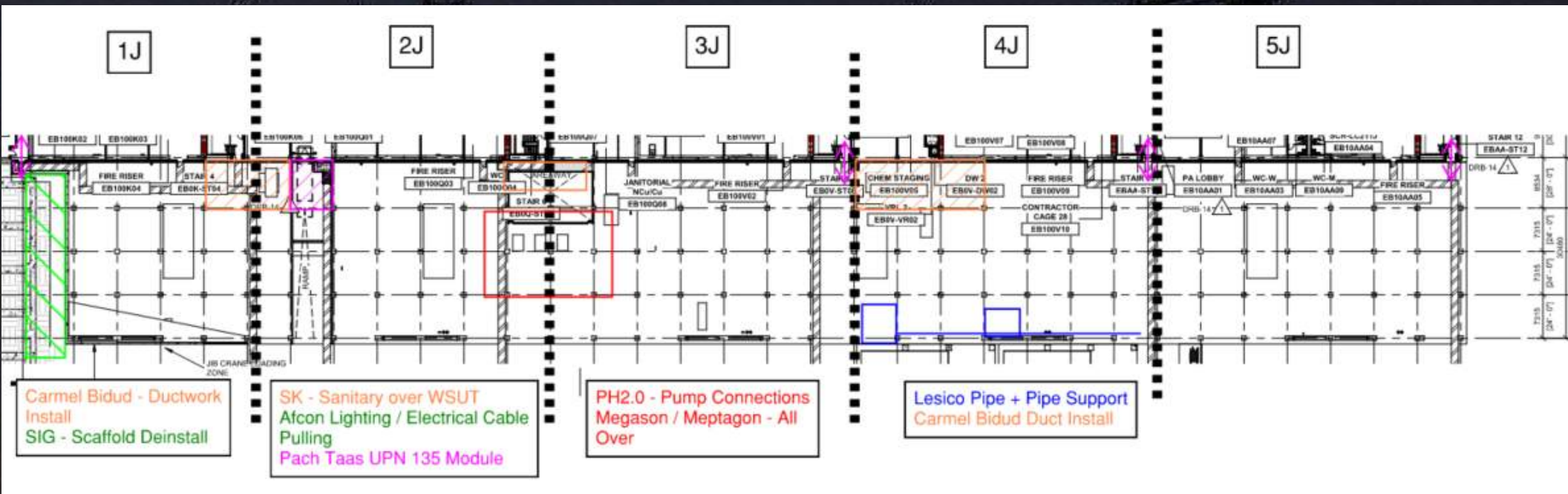


WJG 03J, 04J, 05J LIFT 2 & 3



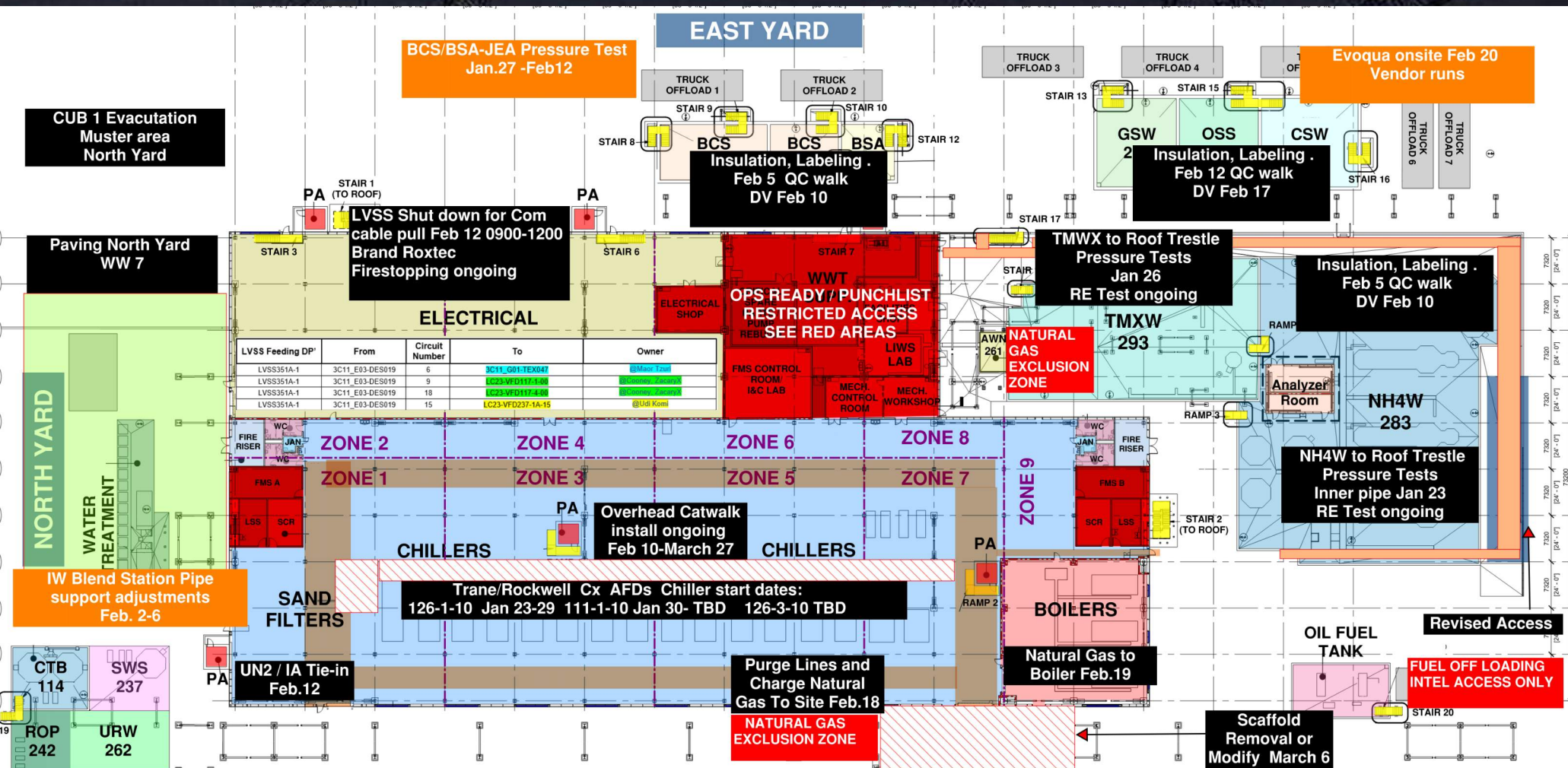


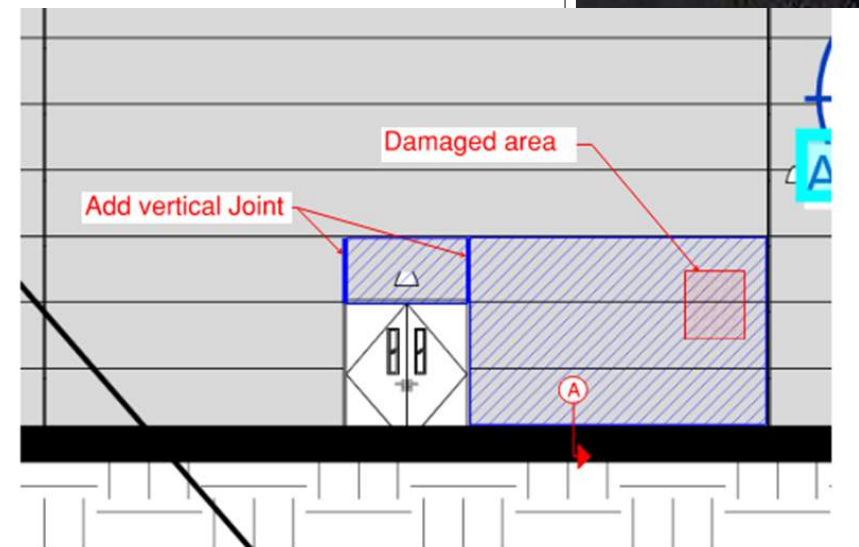
WJG UTILITY LEVEL BUILD OUT



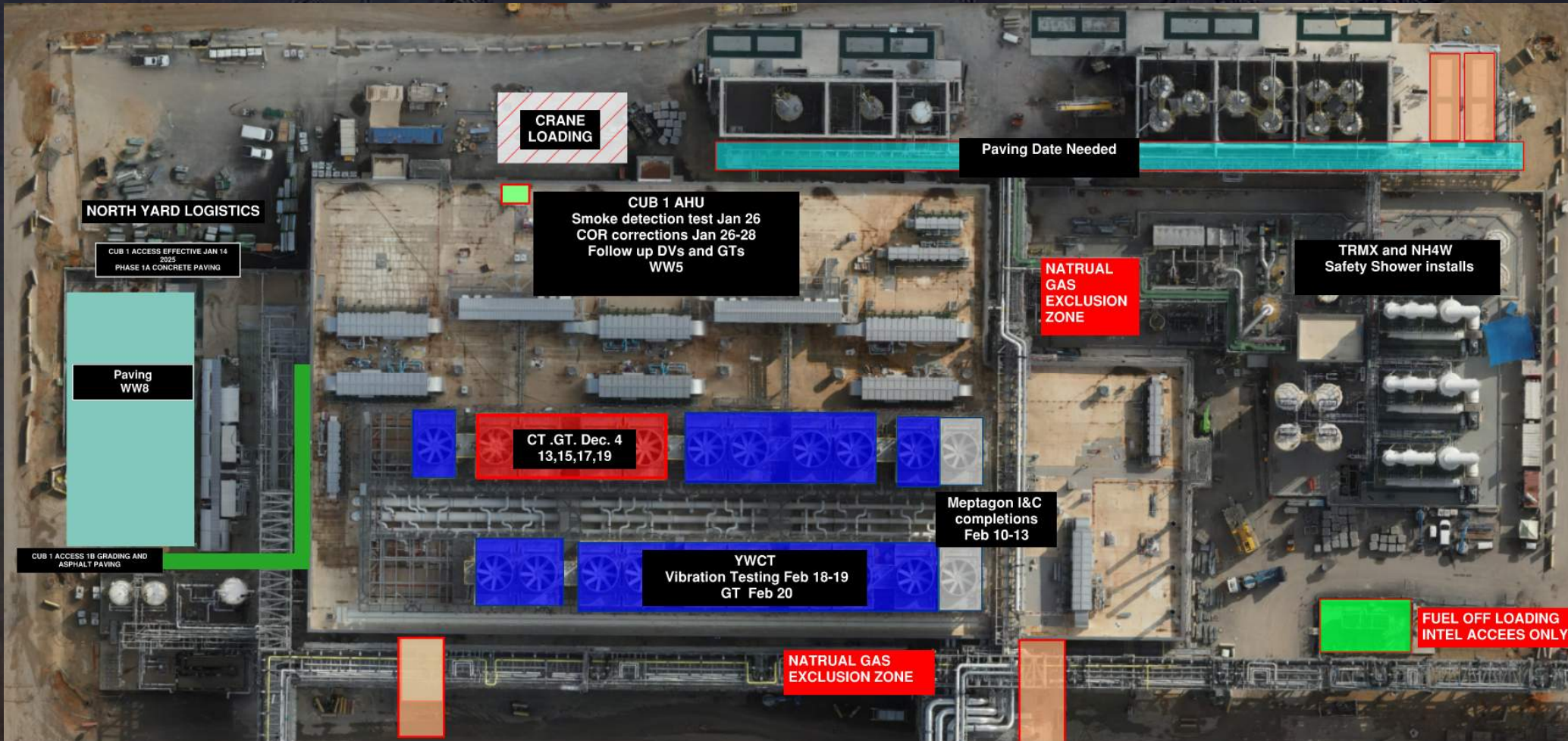


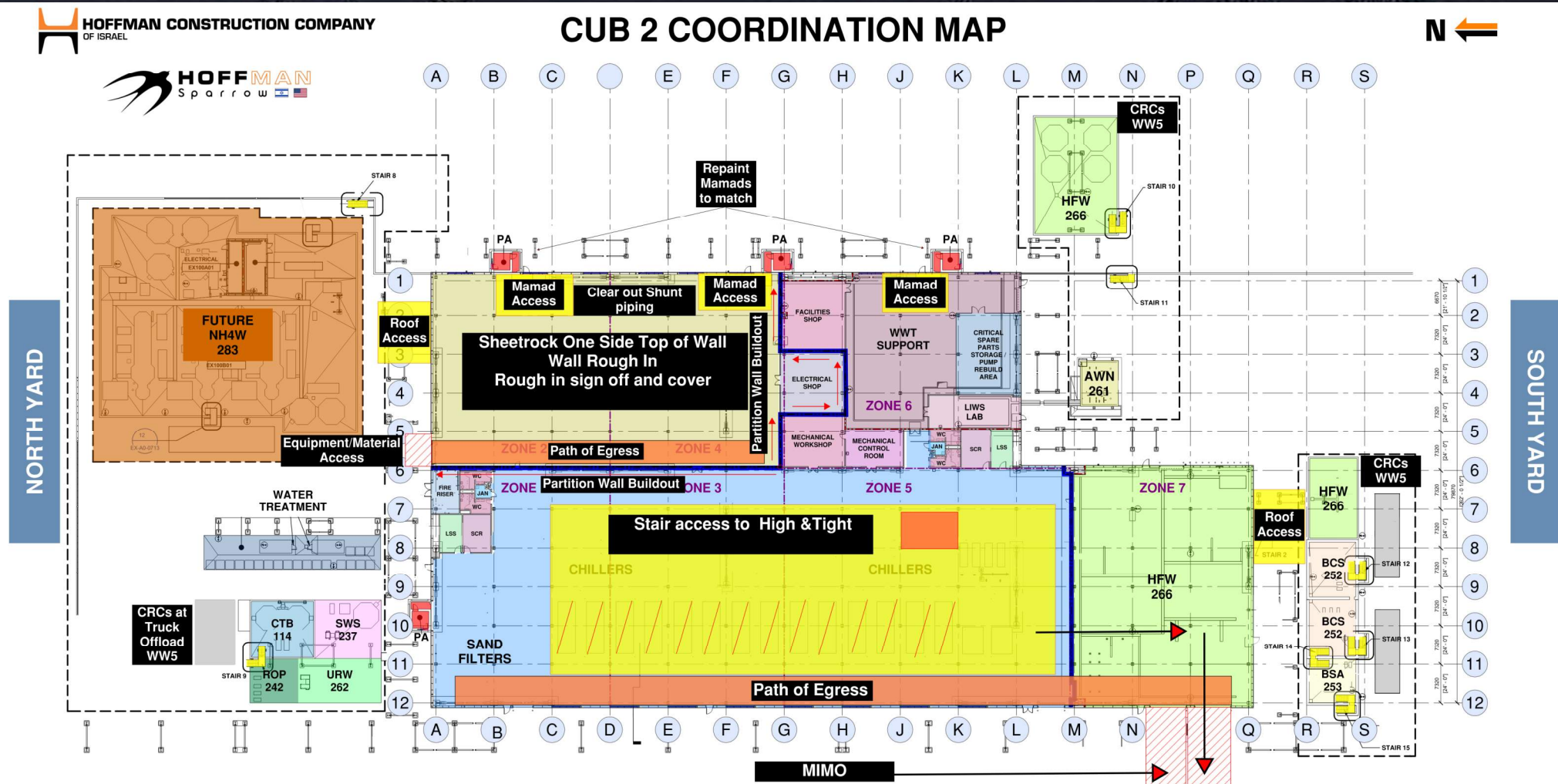
CUB 1





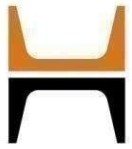
CUB 1 – EXTERIOR/ROOF



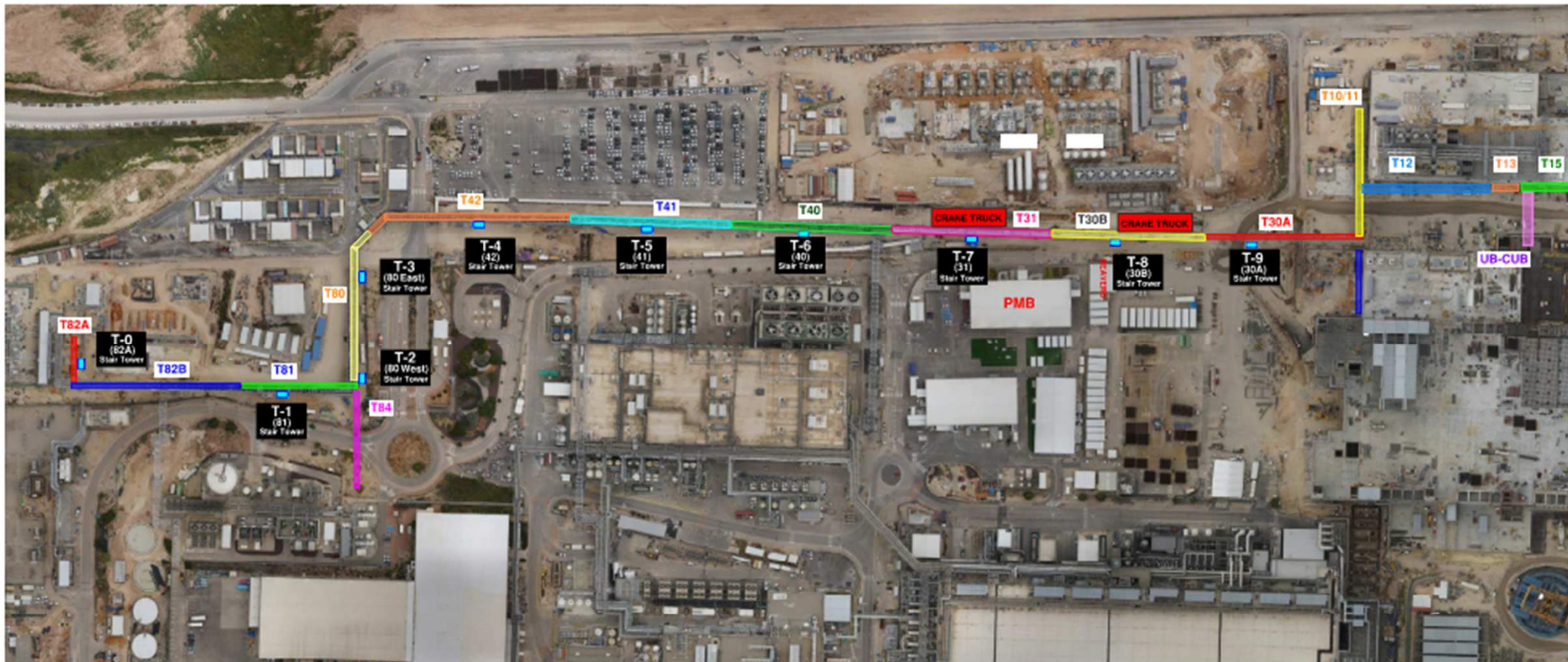


CUB 2 – EXTERIOR/ROOF





HOFFMAN CONSTRUCTION COMPANY





HOFFMAN CONSTRUCTION COMPANY



Daily Coordination Meeting

Site Logistics
North



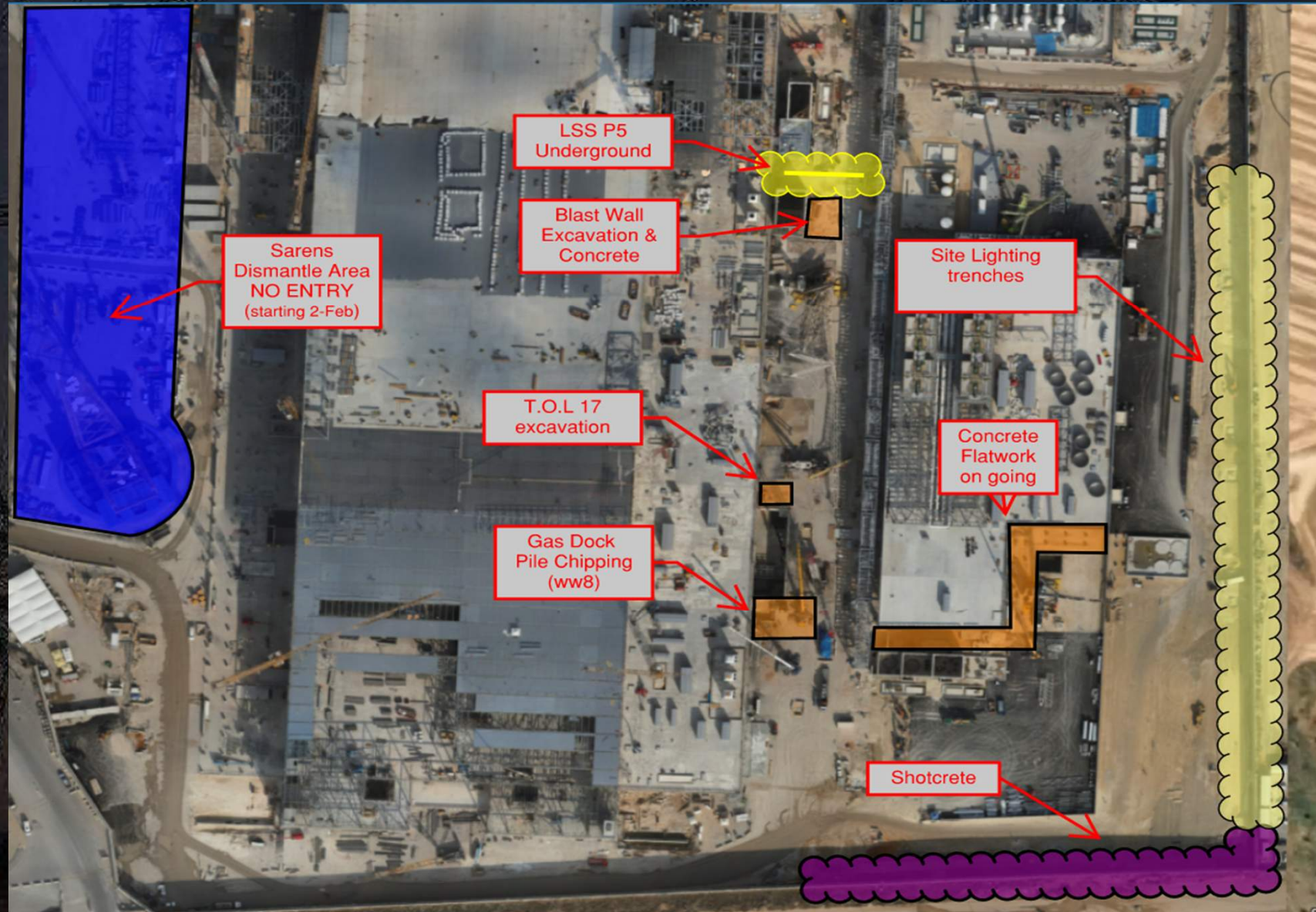


HOFFMAN CONSTRUCTION COMPANY



Daily Coordination Meeting

Site Logistics
South



Congestion, Barricades, Parking Equipment

- We need to ensure that when we are done with equipment for the day that we are parking equipment out of potential driving, walking, or work areas.
- This will help us reduce equipment congestion in work areas. Further to this though, is ensuring that we aren't bringing more equipment to site than is needed.
- If we are working in close proximity to other pieces of equipment and are creating potential pinch points with those equipment- hard barricades must be in place to keep personnel out.
- Counterweight swing radii of cranes and MEWPs need to be red barricaded. The barricade needs to be large enough to fully enclose the operational swing of the equipment.

Daily Coordination Meeting



14:00 Sign In