

Daily Coordination Meeting



14:00 Sign In



Daily Coordination Meeting

General Topics:

- HFC guidelines - nothing changed in this area
 - Make sure closest protected area is noted on PTP
 - Red flags - missing personnel
 - Keep attention focused on tasks



equipment pads
CUB2 7:00 am

1J curb
8:30 am

SWTD dock
leveler
8:00 am

אינטל קרית גת

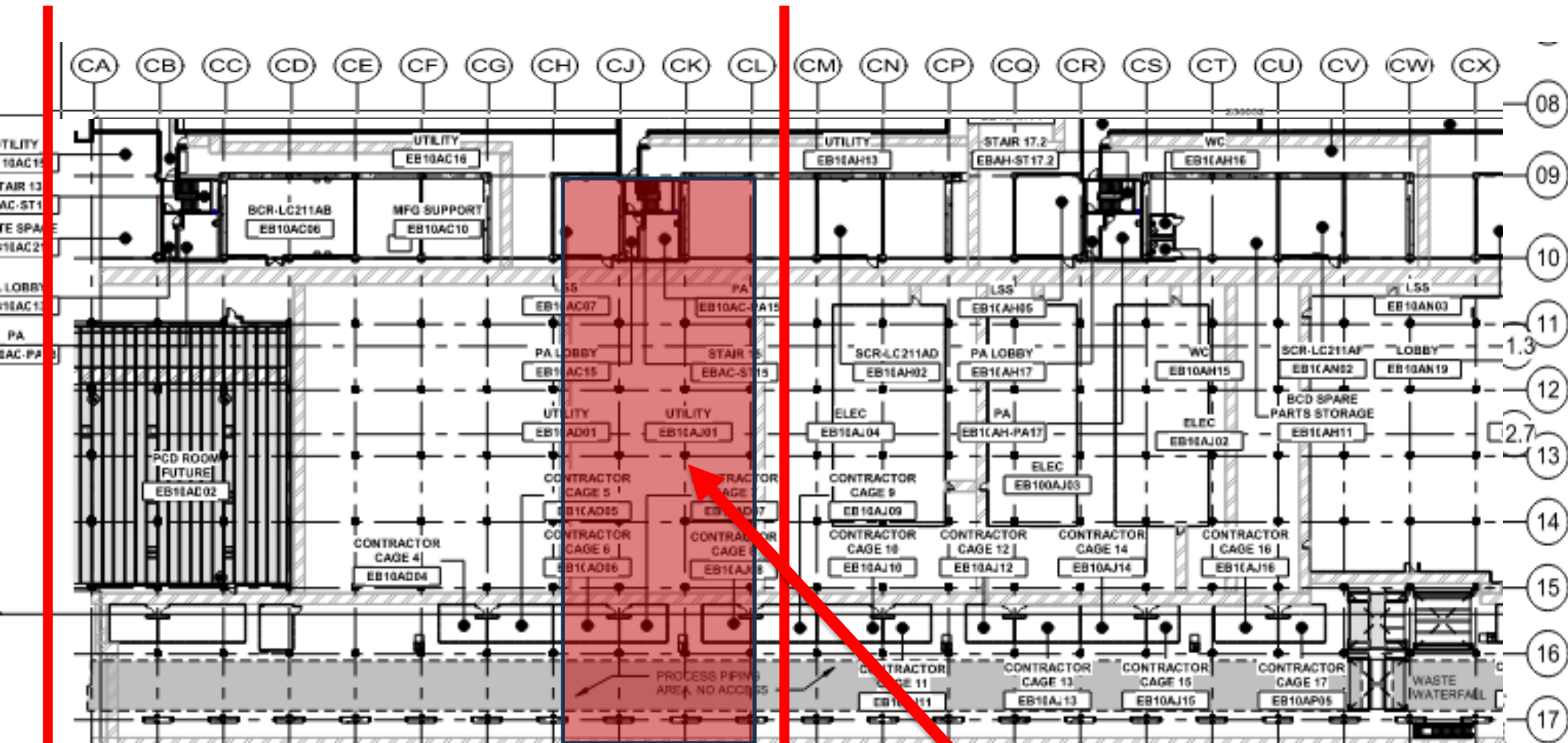
FAB-28



HOFFMAN CONSTRUCTION COMPANY



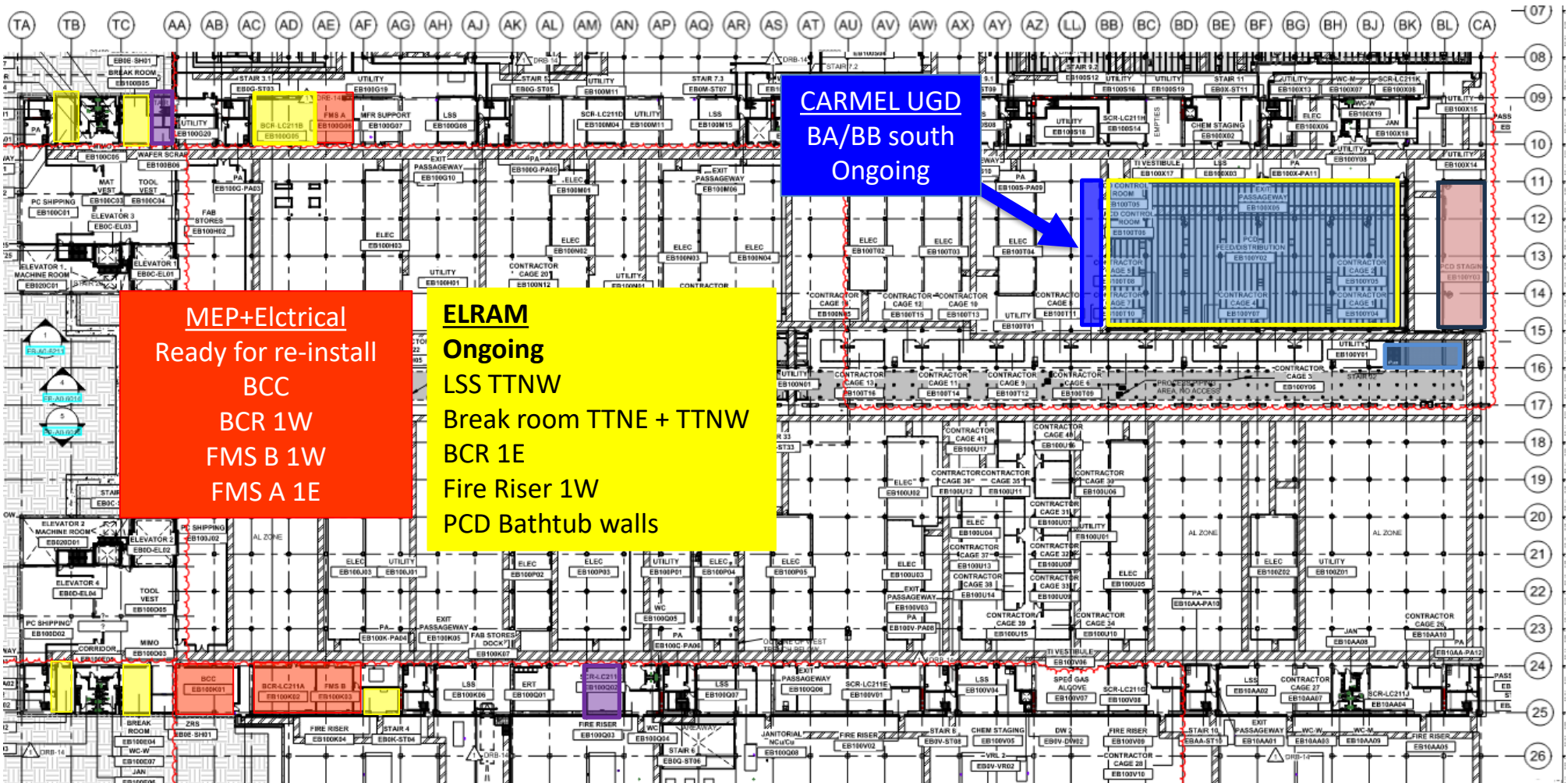
UTILITY LEVEL MOD2



BB
line

TRUSS SET
6W
Tomorrow
Start 4:00am

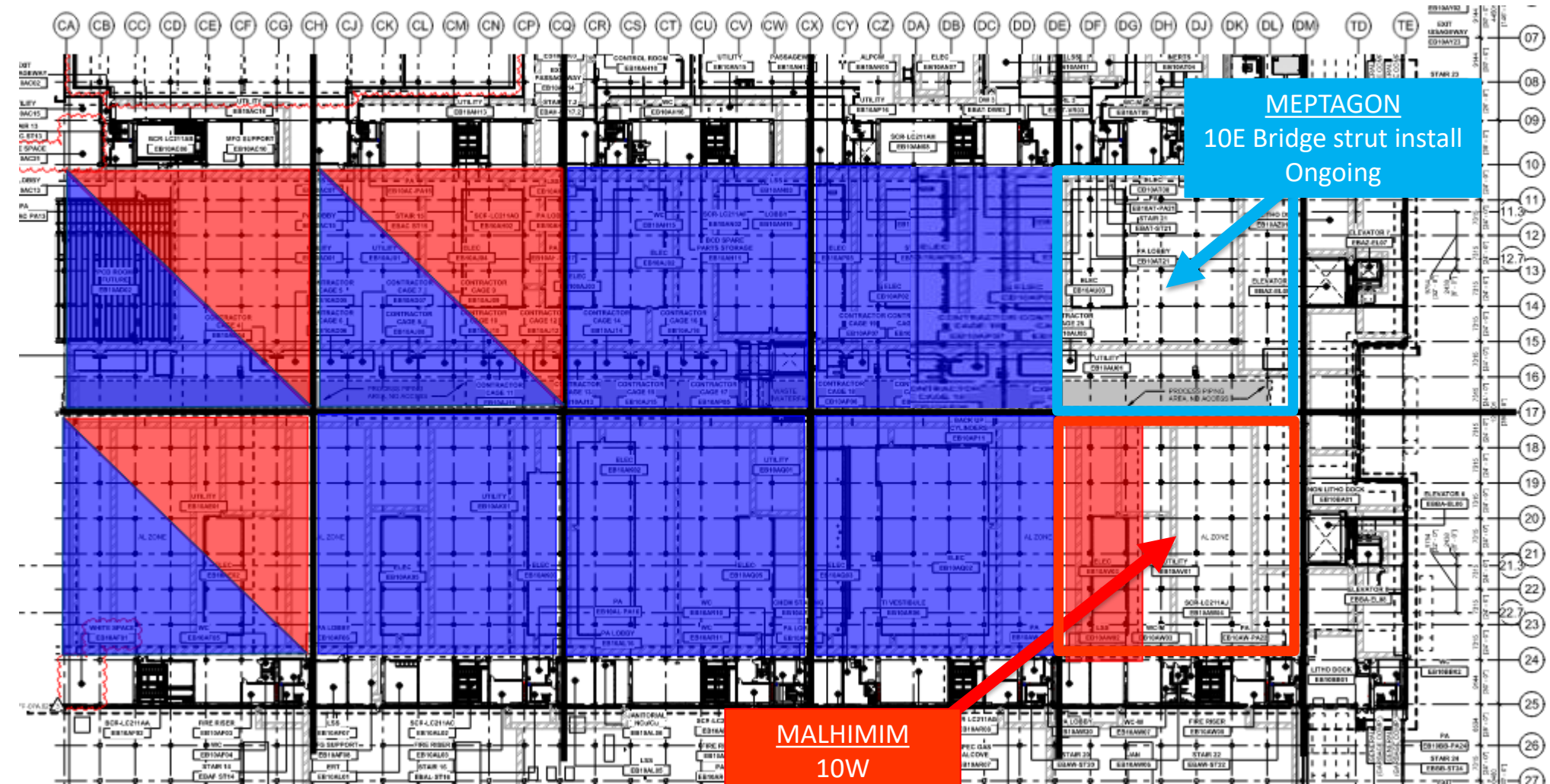
UTILITY LEVEL MOD1



UTILITY LEVEL MOD2

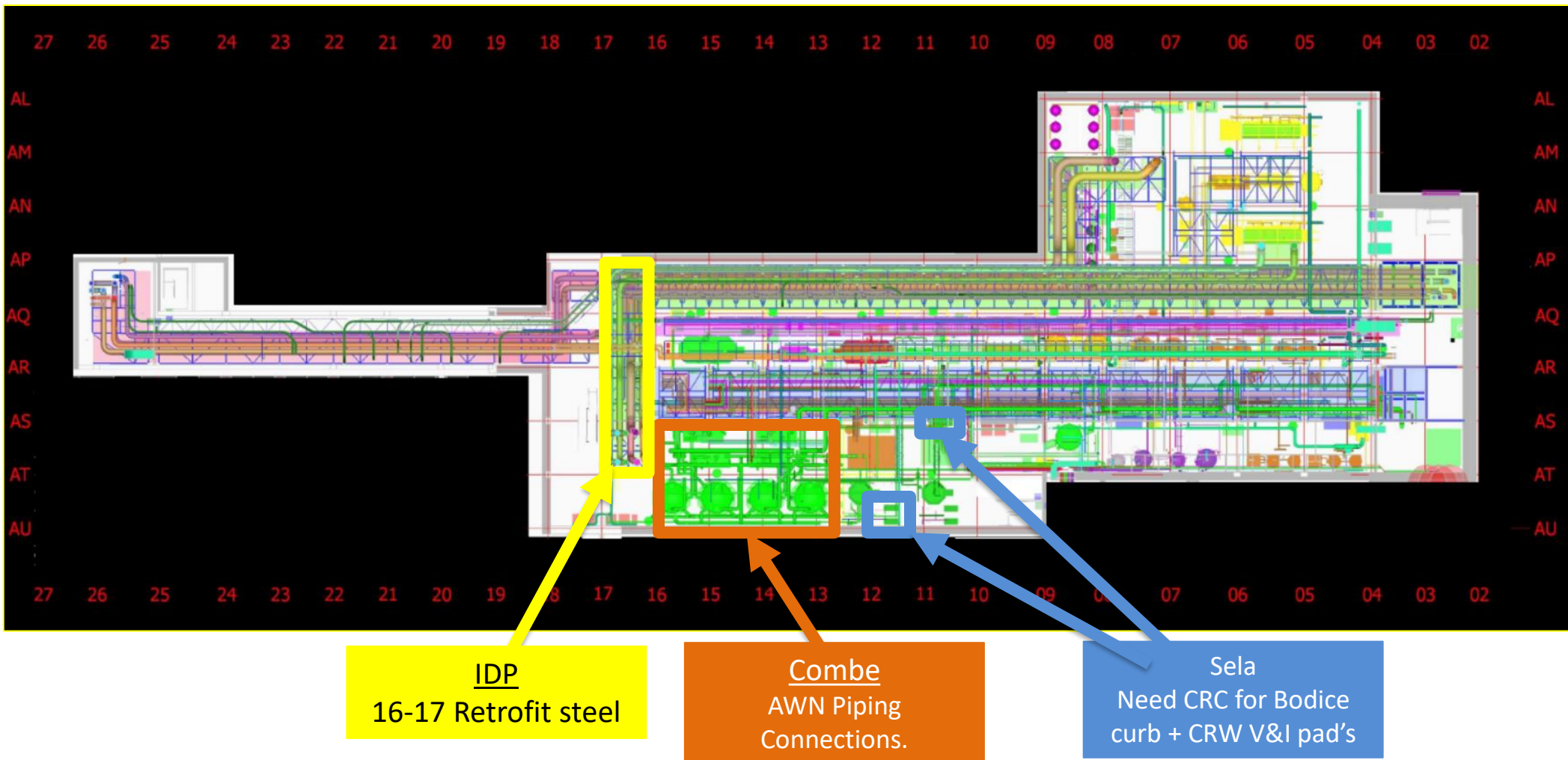
MEPTAGON
10E Bridge strut install
Ongoing

MALHIMIM
10W
Sprinklers install



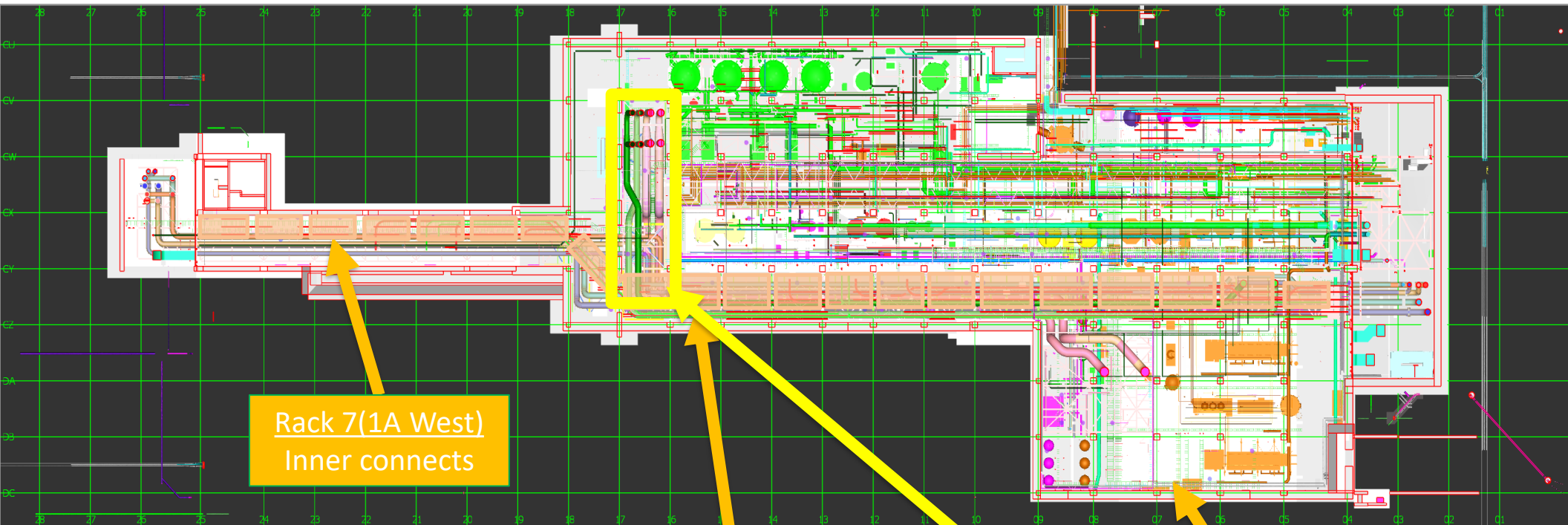


SUT 38.1 LEVEL





SUT 38.2 LEVEL



Rack 7(1A West)
Inner connects

1A Rack
Inner connects

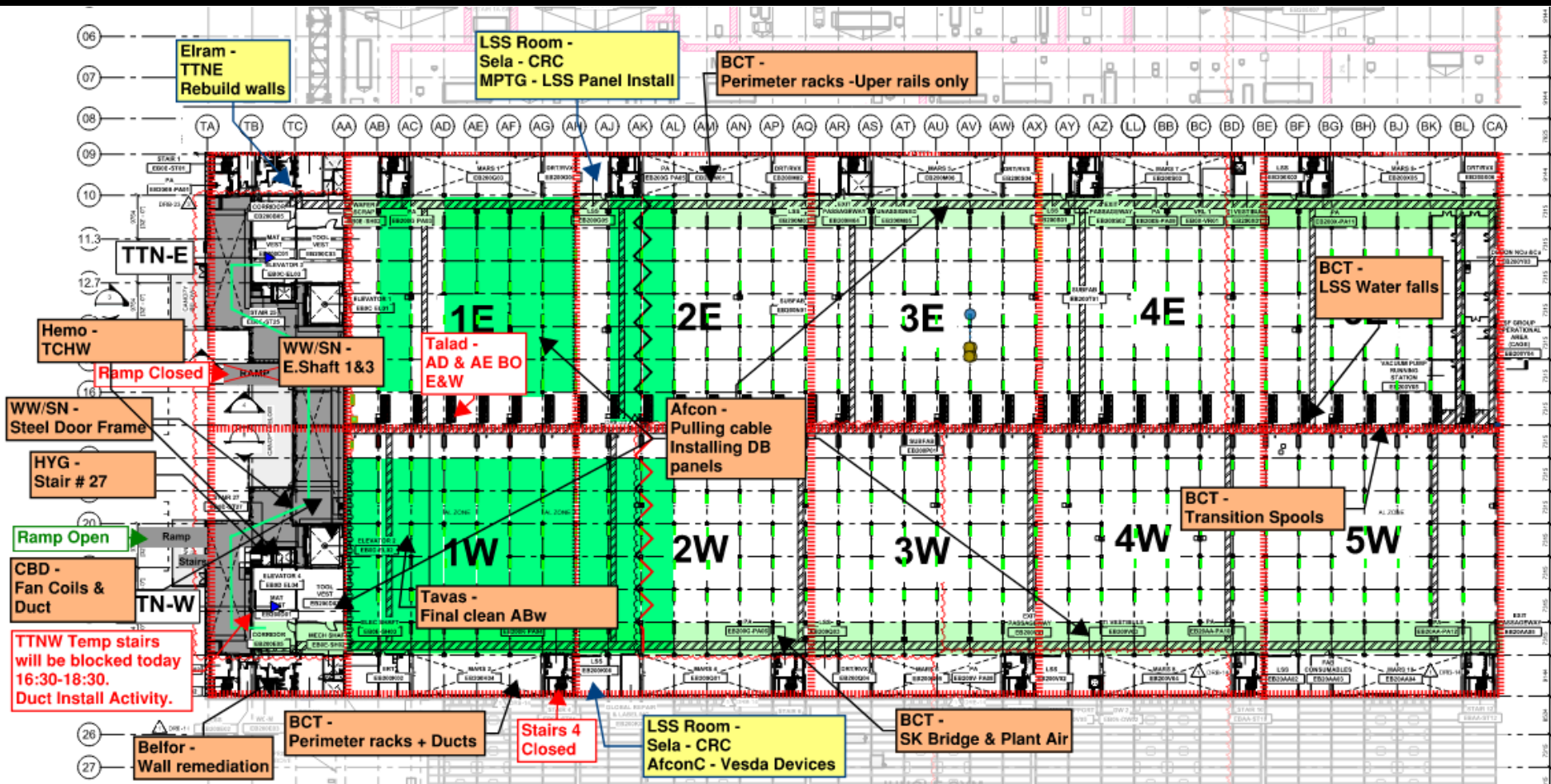
16-17 line
Upper Steel Bed
build

8 Rack
Lifting

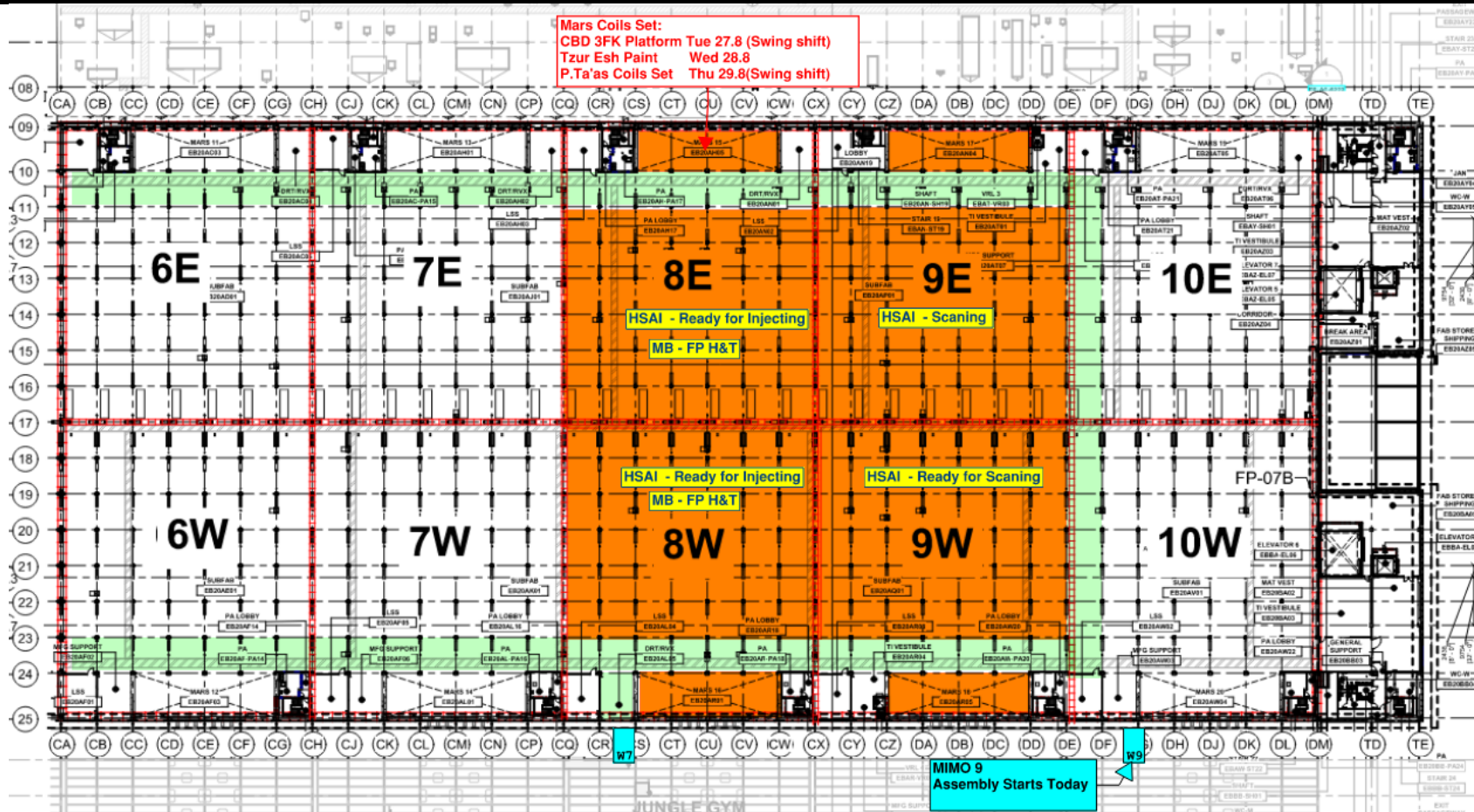
CRW
H&T
Installing supports

Vesda
H&T
Not actively installing

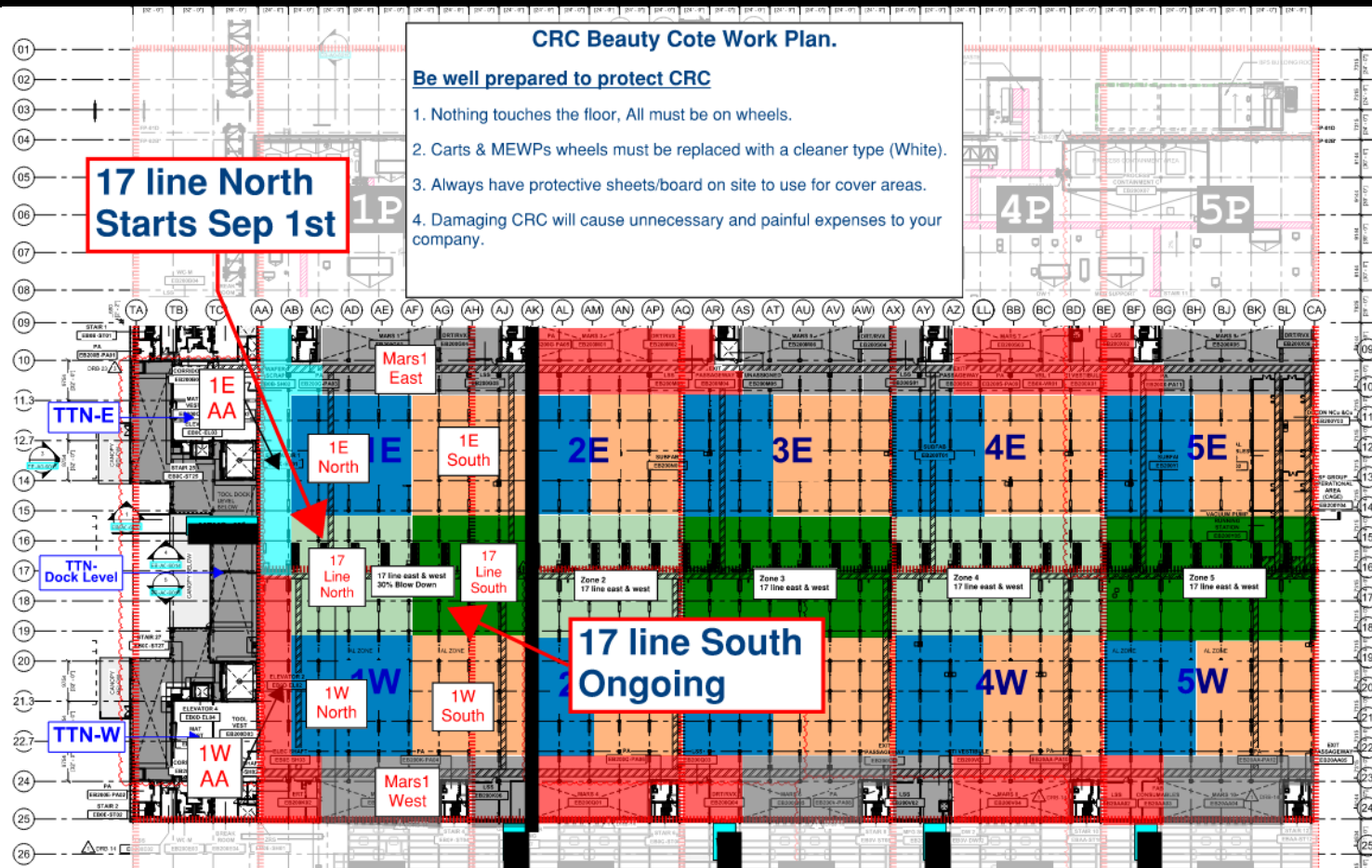
SUBFAB BUILDOUT MOD 1



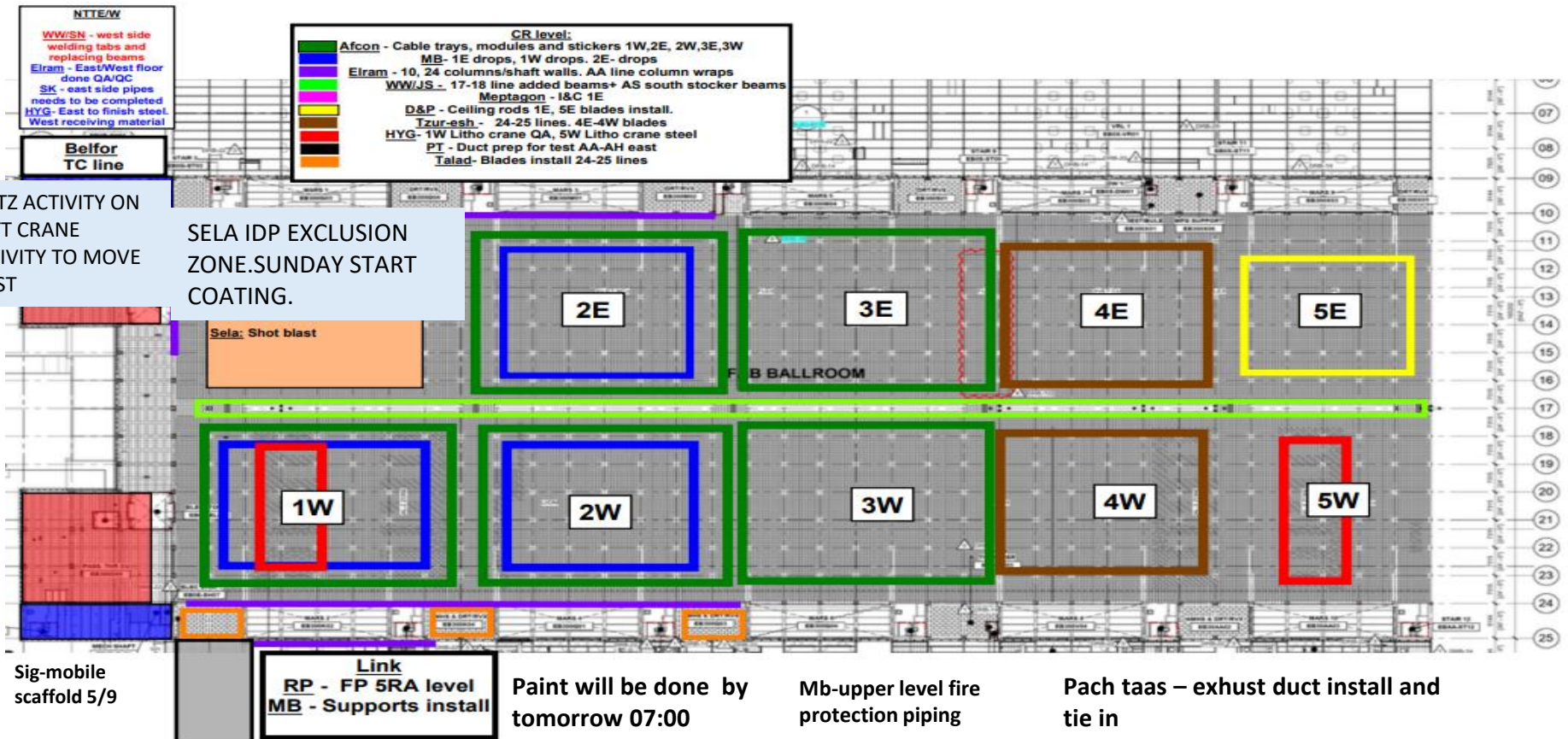
SUBFAB BUILDOUT MOD 2

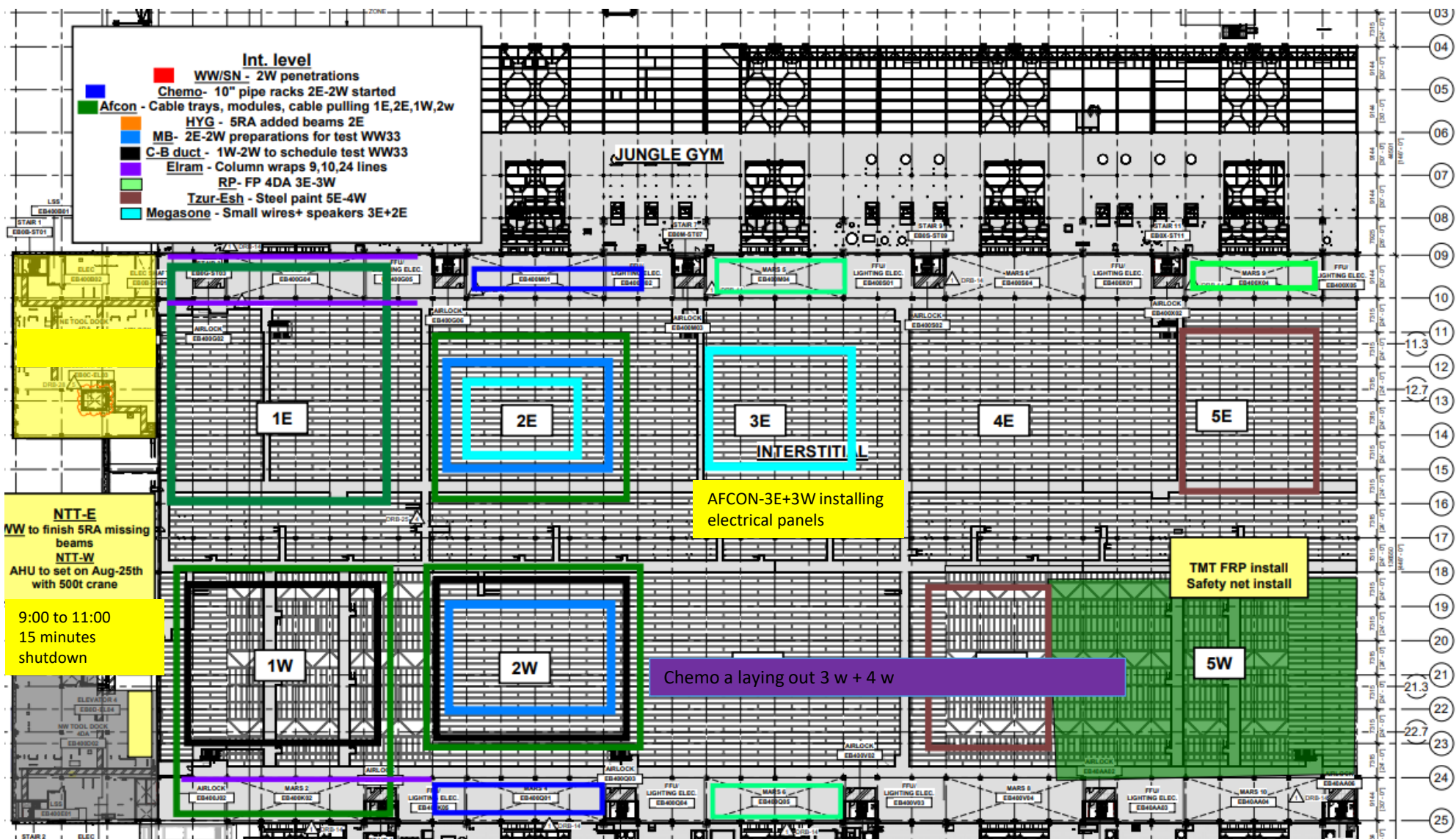


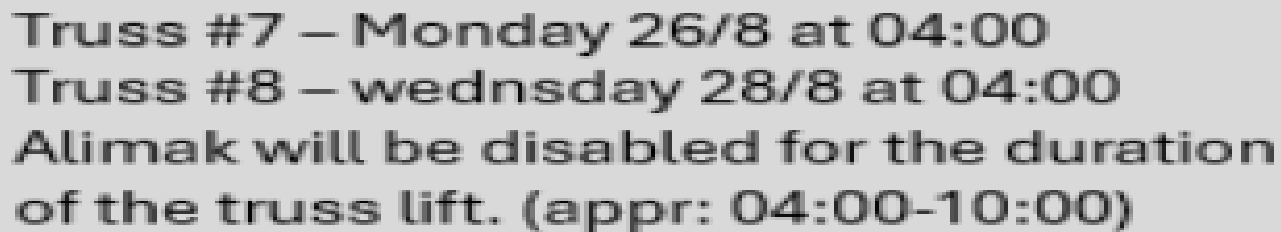
SUBFAB CRC TOPCOAT

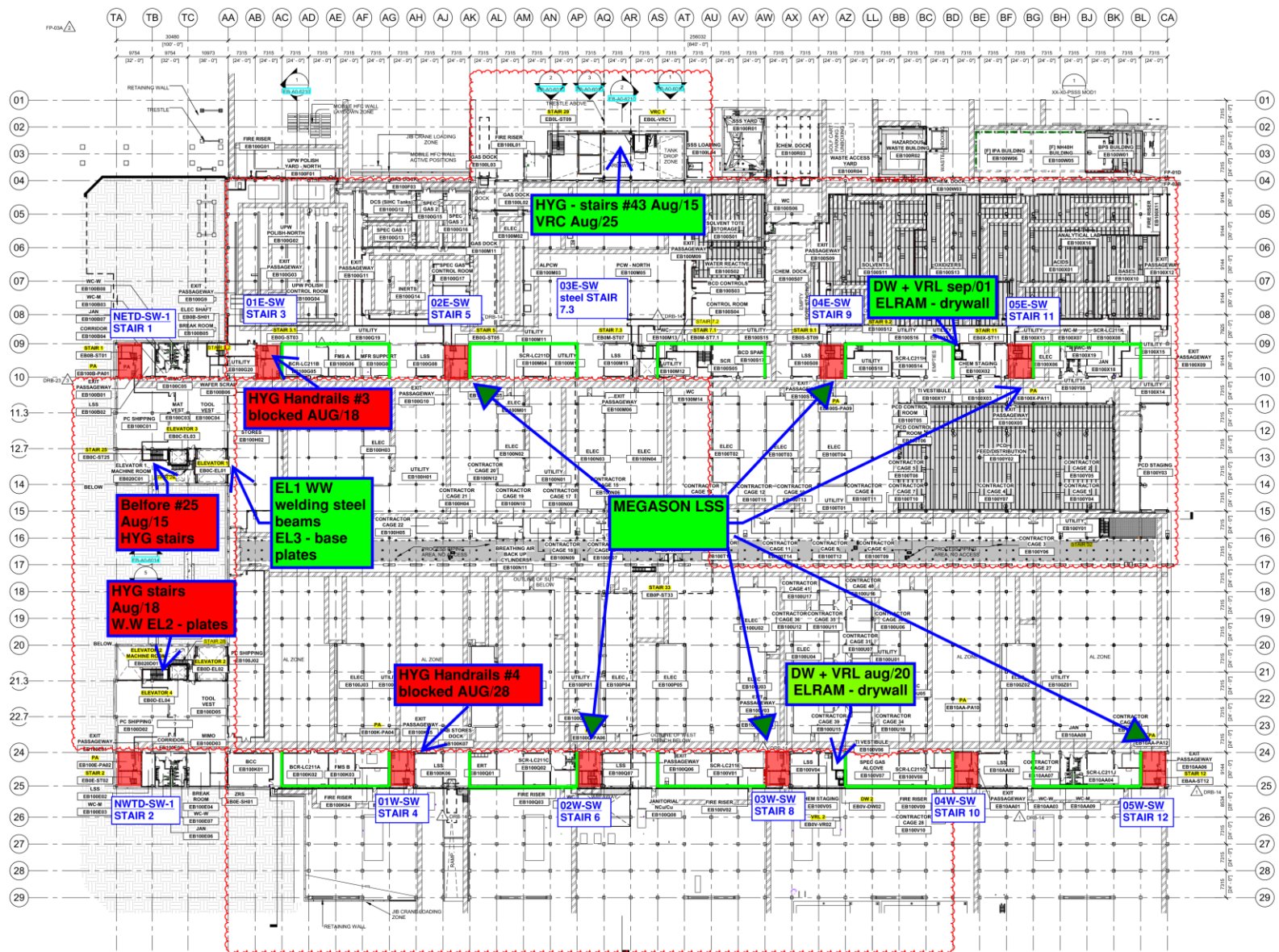


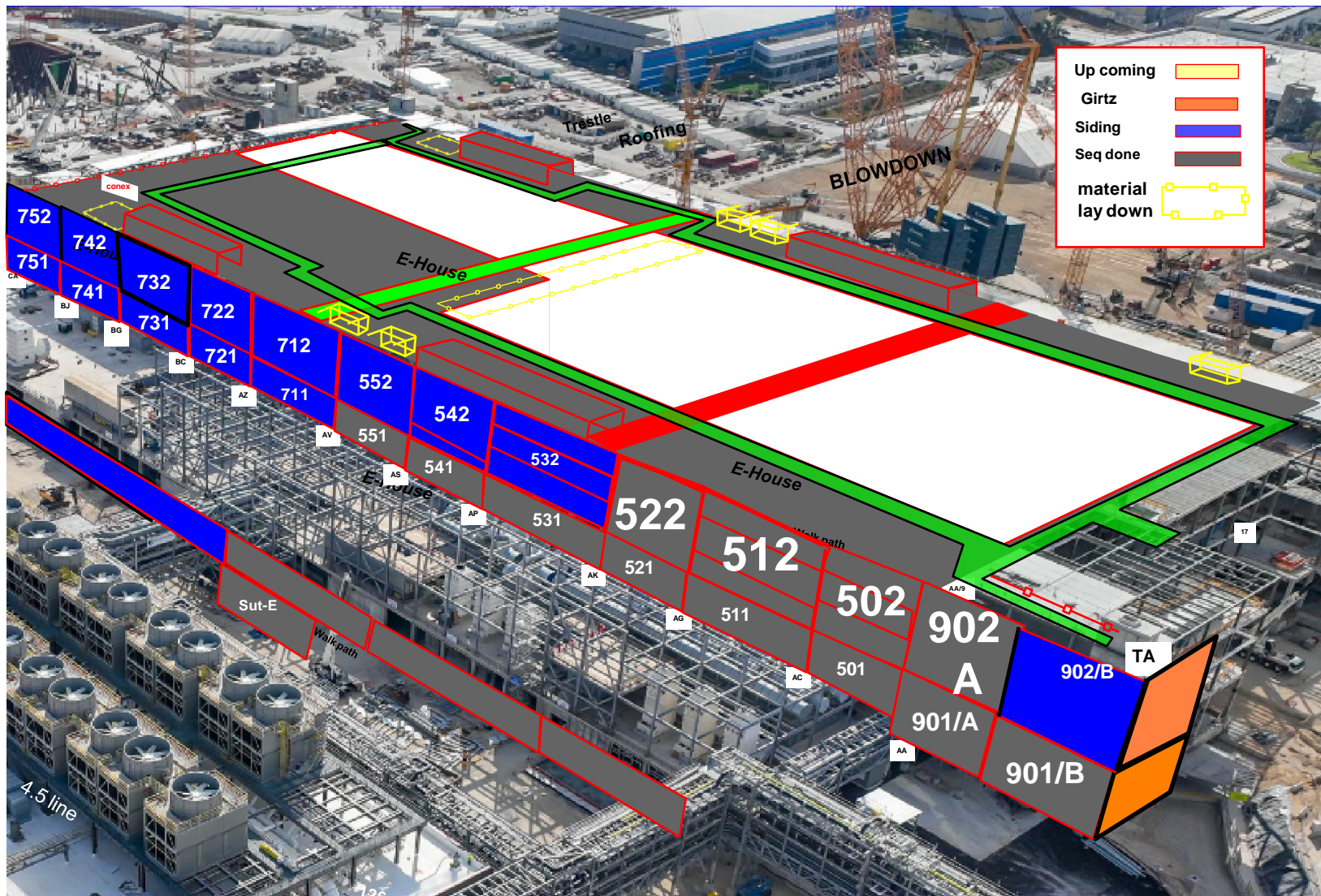
HOFFMAN CONSTRUCTION COMPANY



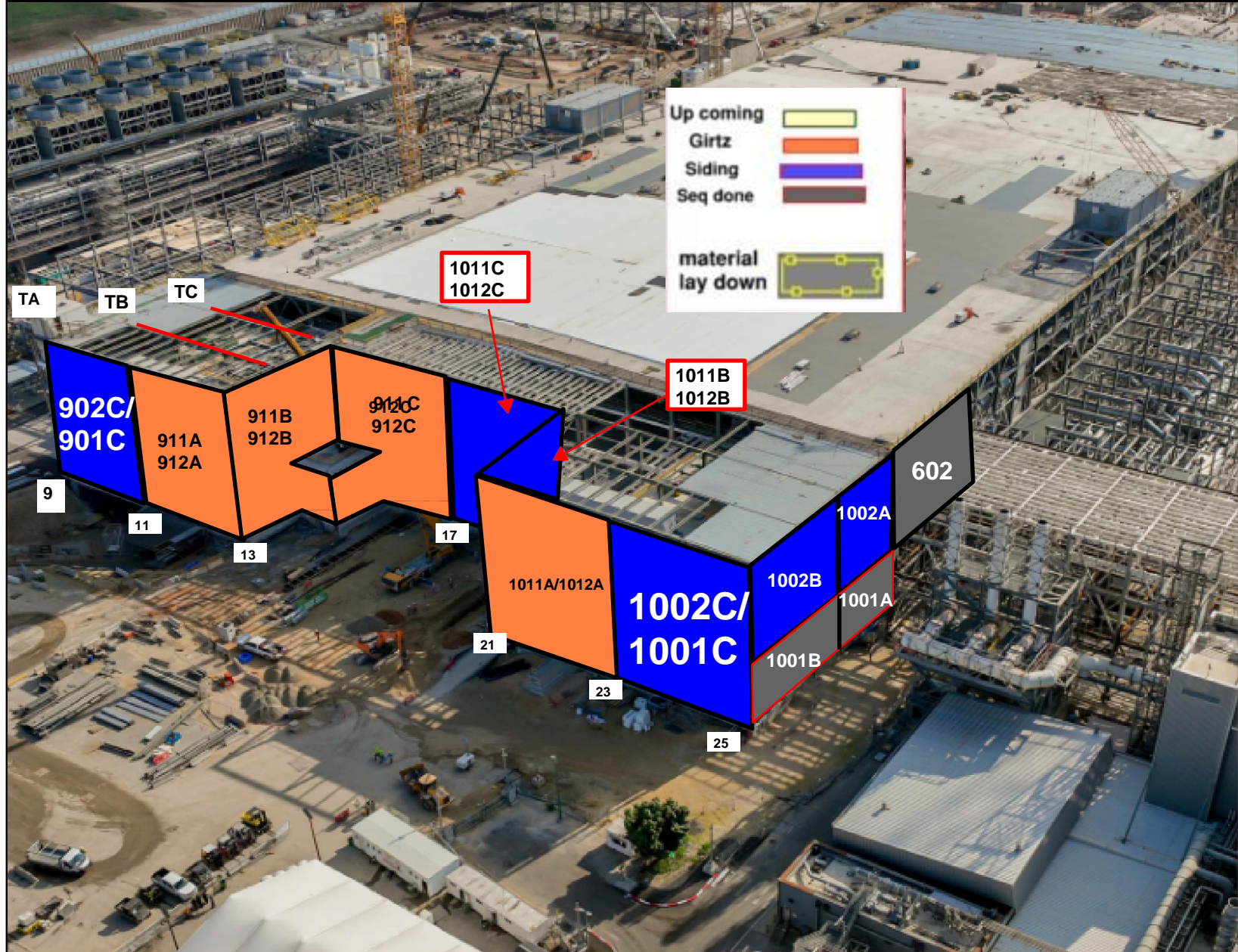


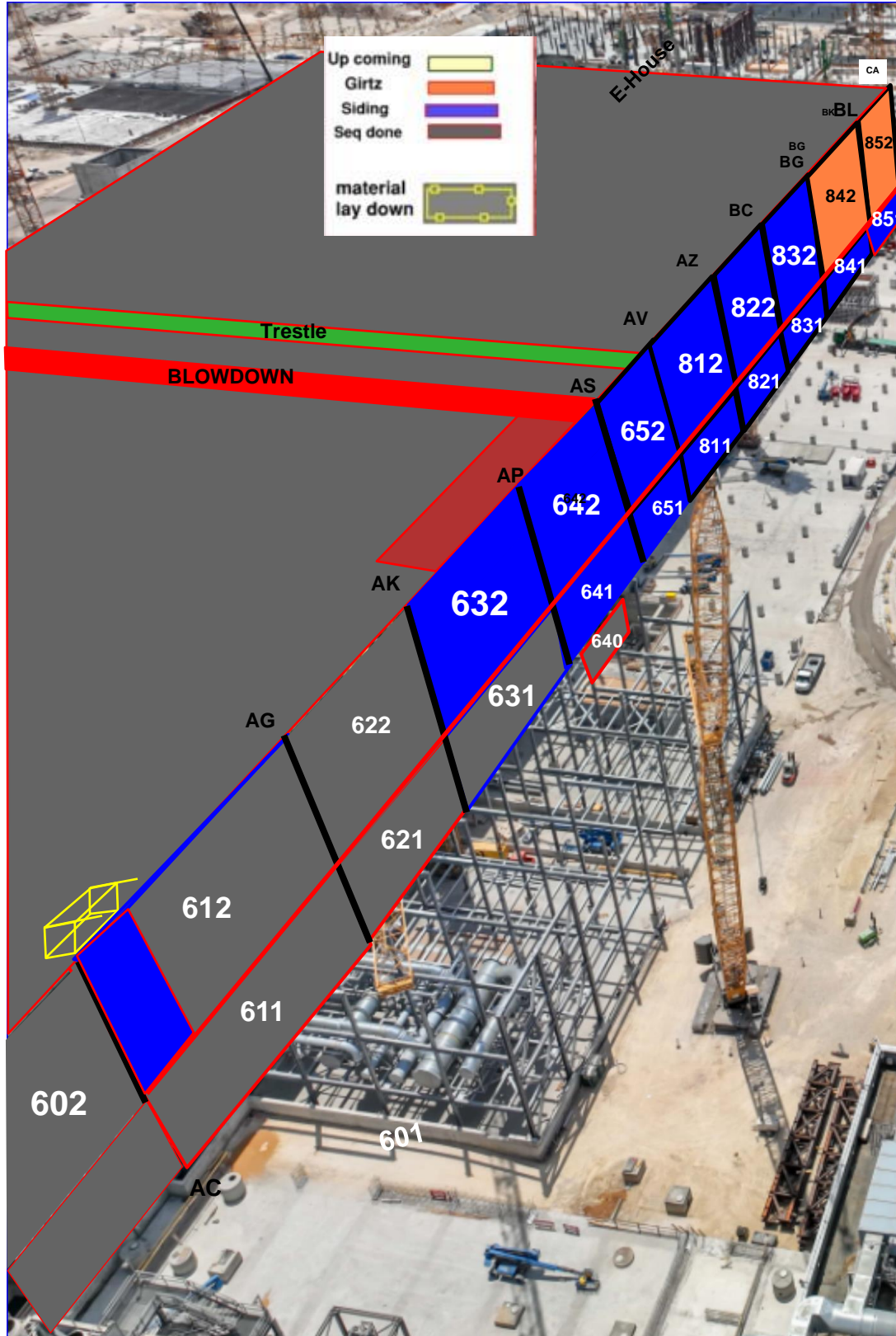
[illegible]





Walk path





West Side of FAB

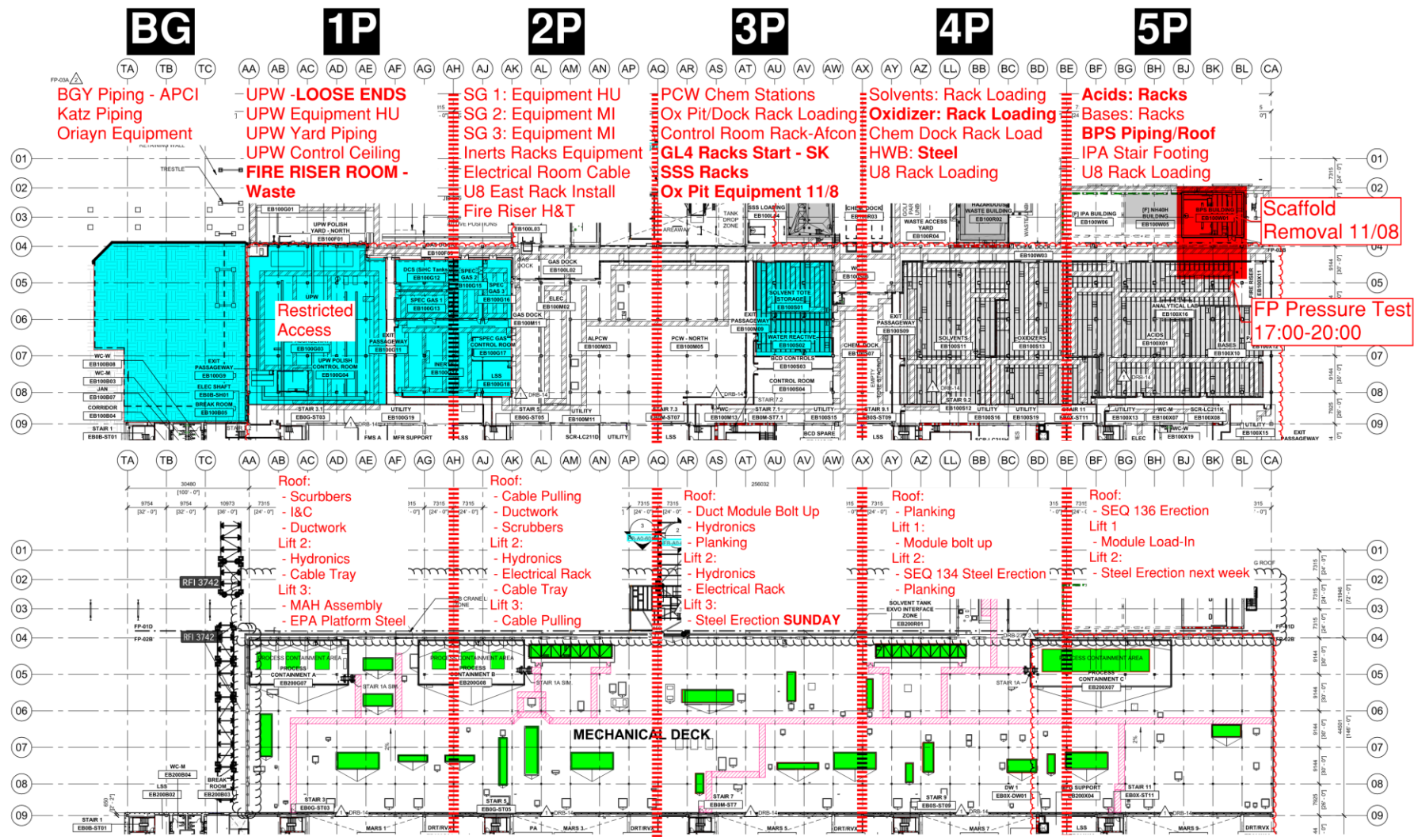
				BLOWDOWN 30%																							
	TA	TB	TC		AA	AB	AC	AD	AE	AF	AG	AH	AJ	AK	AL	AM	AN	AP	AQ	AR	AS	AT					
	1001 / 1002				601 / 602		611 / 612				621 / 622				631 / 632					641 / 642				651 / 652			
Total		28	28	28		15	18	31	31	31	31	31	31	31	31	31	31	31	31	31	31	31	31				
Installed		8	14	10		15	18	14	31	31	31	31	31	27	19	24	24	13	6	6	14	6	10				
%		29%	50%	36%		100%	100%	45%	100%	100%	100%	100%	100%	87%	61%	77%	77%	42%	19%	19%	45%	19%	100%				
31		0	0	0		1	1	0	1	1	1	1	1	0	0	0	0	0	0	0	0	0	0				
30		0	0	0		1	1	0	1	1	1	1	1	0	0	0	0	0	0	0	0	0	0				
29		0	0	0		1	1	0	1	1	1	1	1	0	0	0	0	0	0	0	0	0	0				
28		0	0	0		1	1	0	1	1	1	1	1	0	0	0	0	0	0	0	0	0	0				
27		0	0	0				0	1	1	1	1	1	0	0	0	0	0	0	0	0	0	0				
26		0	0	0				0	1	1	1	1	1	0	0	0	0	0	0	0	0	0	0				
25		0	0	0				0	1	1	1	1	1	0	0	0	0	0	0	0	0	0	0				
24		0	0	0				0	1	1	1	1	1	0	0	1	1	0	0	0	0	0	0				
23		0	0	0	Link			0	1	1	1	1	1	0	0	1	1	0	0	0	0	0	0				
22		0	0	0				0	1	1	1	1	1	1	0	0	1	1	0	0	0	0	0				
21		0	0	0				0	1	1	1	1	1	1	0	0	1	1	0	0	0	0	0				
20		0	0	0				0	1	1	1	1	1	1	0	0	1	1	0	0	0	0	0				
19		0	0	0				0	1	1	1	1	1	1	0	0	1	1	0	0	0	0	0				
18		0	0	0				0	1	1	1	1	1	1	0	0	1	1	0	0	0	0	0				
17		0	1	0				0	1	1	1	1	1	1	0	0	1	1	0	0	0	0	0				
16		0	1	0				0	1	1	1	1	1	1	0	0	1	1	0	0	0	0	0				
15		0	1	0			0	1	1	1	1	1	1	0	0	1	1	0	0	0	0	0					
14		0	1	0			0	1	1	1	1	1	1	0	0	1	1	0	0	0	1	0					
13		0	1	0			0	1	1	1	1	1	1	0	0	1	1	0	0	0	1	0					
12		0	1	0			0	1	1	1	1	1	1	0	0	1	1	0	0	0	1	0					
11		1	1	1		1	1	1	1	1	1	1	1	1	1	1	1	1	0	0	1	0					
10		1	1	1		1	1	1	1	1	1	1	1	1	1	1	1	0	0	0	1	0					
9		1	1	1		1	1	1	1	1	1	1	1	1	1	1	1	0	0	0	1	0					
8		1	1	1		1	1	1	1	1	1	1	1	1	1	1	1	0	0	0	1	0					
7		1	1	1		1	1	1	1	1	1	1	1	1	1	1	1	0	0	0	1	0					
6		1	1	1		1	1	1	1	1	1	1	1	1	1	1	1	0	0	0	1	0					
5		1	1	1		1	1	1	1	1	1	1	1	1	1	1	1	0	0	0	1	0					
4		1	1	1		1	1	1	1	1	1	1	1	1	1	1	1	0	0	0	1	0					
3		1	1	1		1	1	1	1	1	1	1	1	1	1	1	1	0	0	0	1	0					
2		1	1	1		1	1	1	1	1	1	1	1	1	1	1	1	0	0	0	1	0					
1		1	1	1		1	1	1	1	1	1	1	1	1	1	1	1	0	0	0	1	0					

[illegible]

PSSS.1

Utility Level
1YA

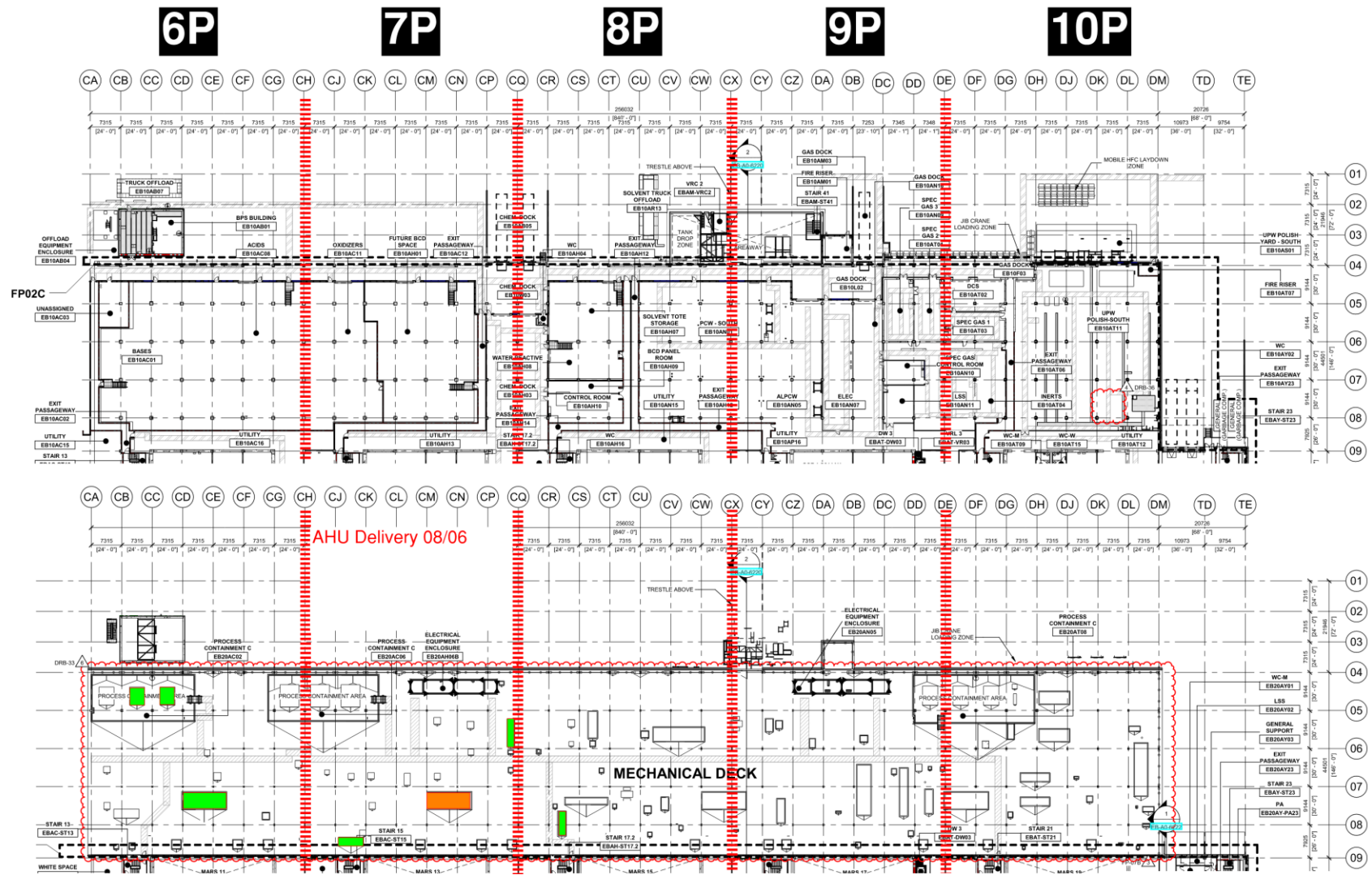
PSSS Roof
2SA

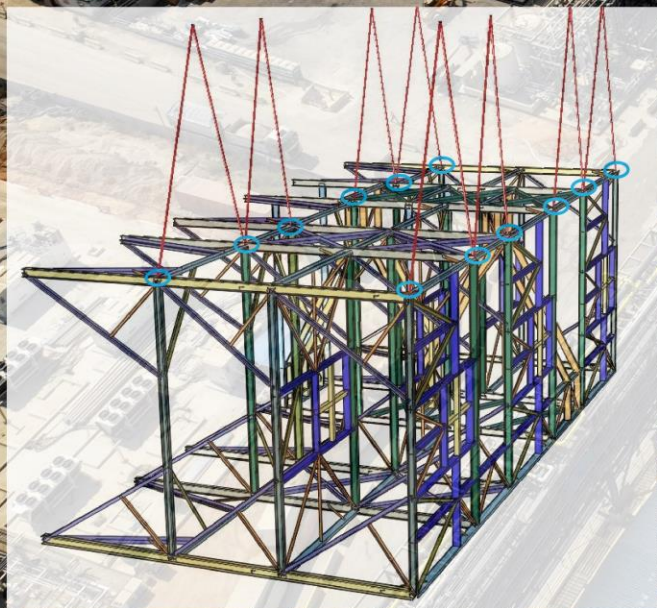
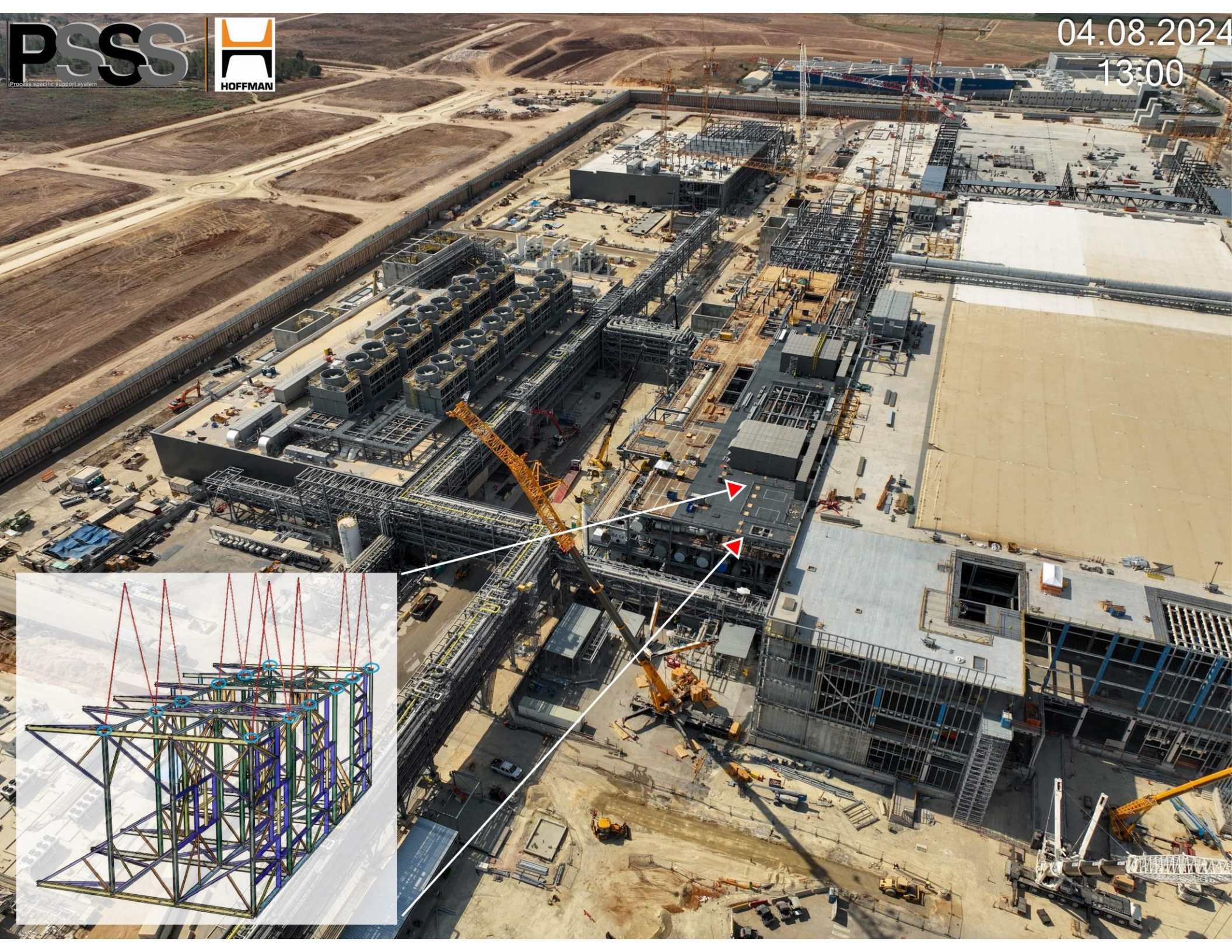



PSSS.2

Utility Level
1YA

PSSS Roof
2SA



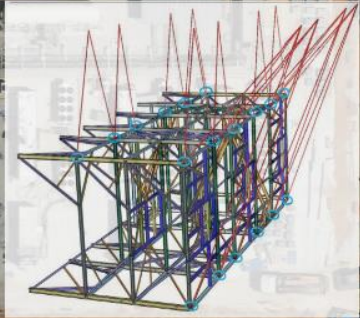
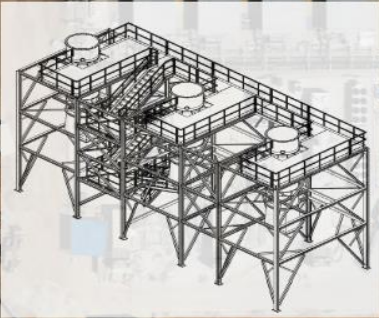
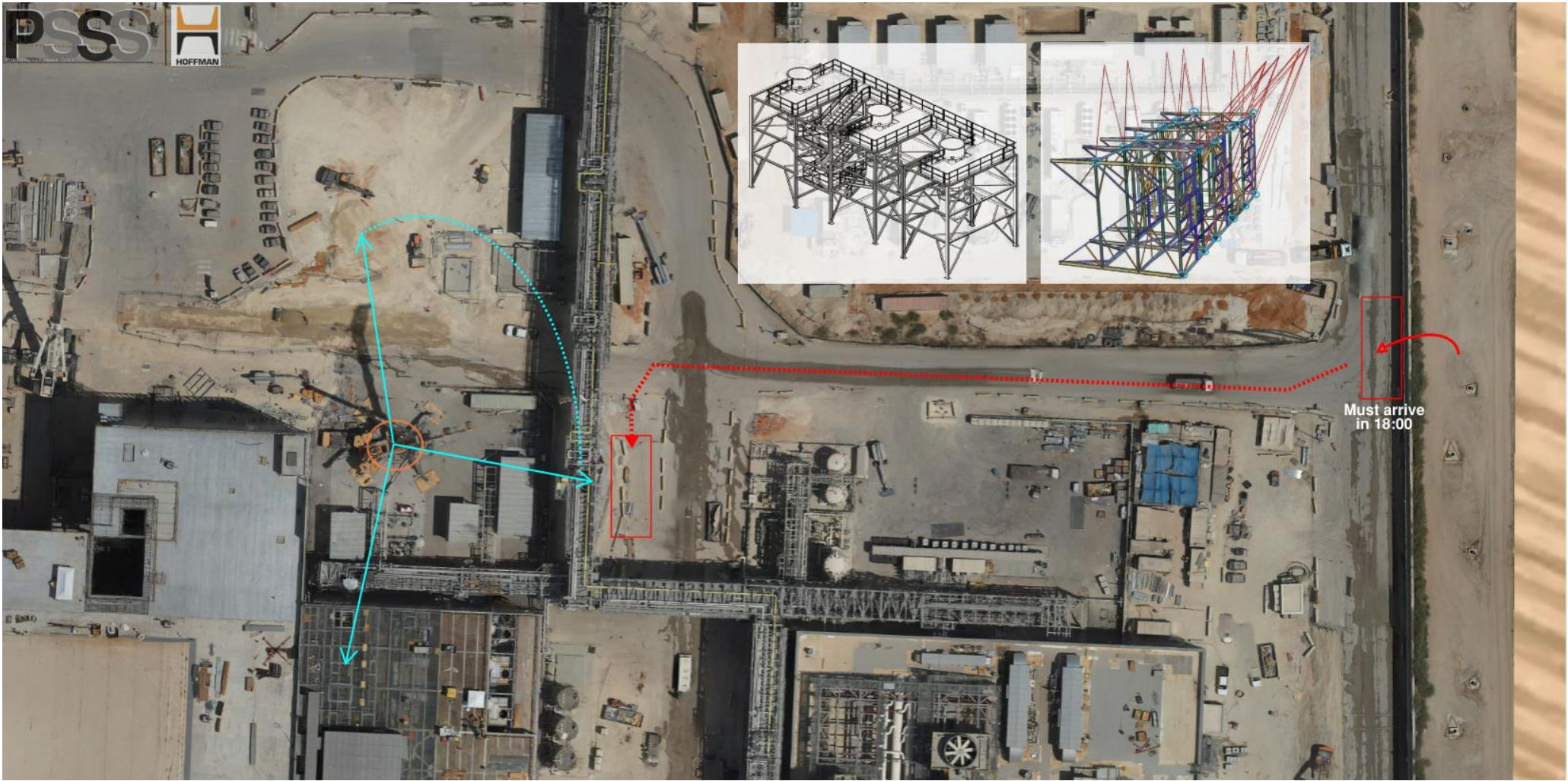




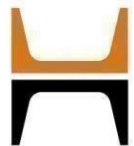
PSSS P1
PachTaas Operation
Plates: 15-08-2024
Air Blower: 20-08-2024
EPA Platform: 26-08-2024

Single
EPA Platform

Fan



Must arrive
in 18:00

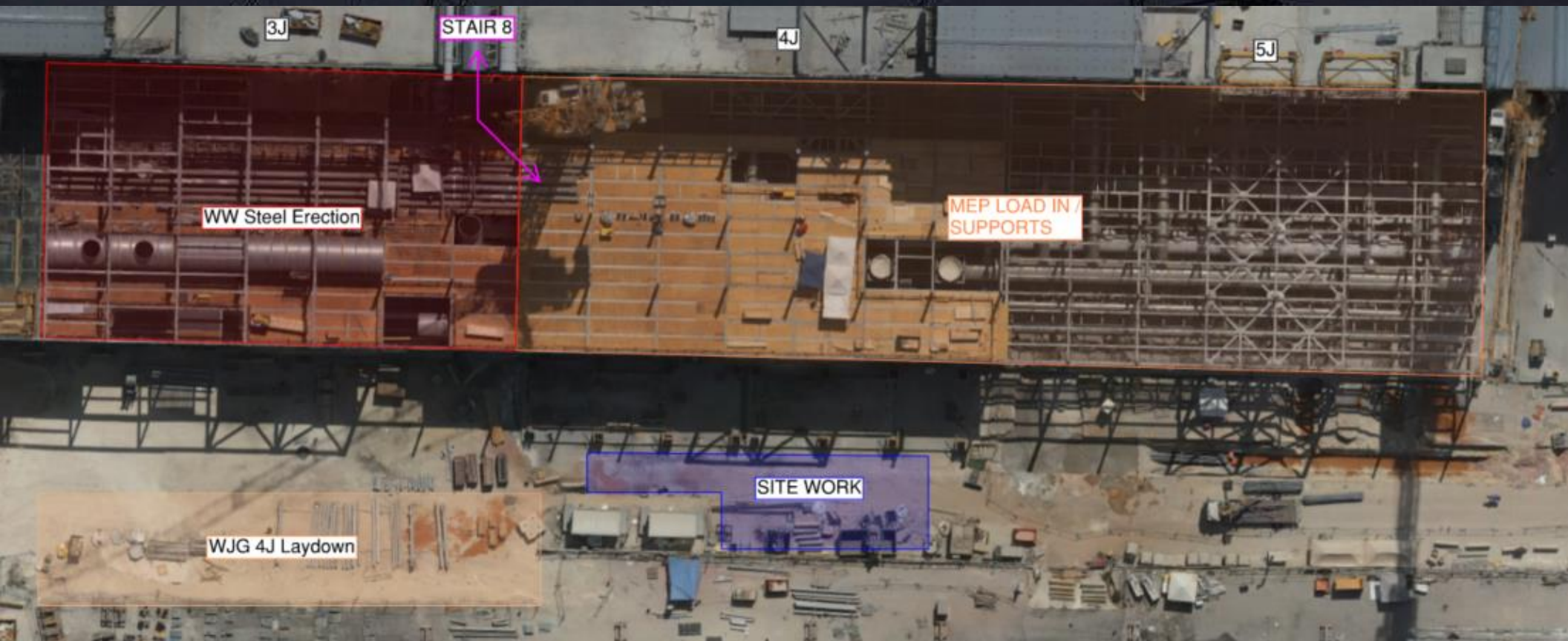


WJG 01J, 02J LIFT 2 & 3



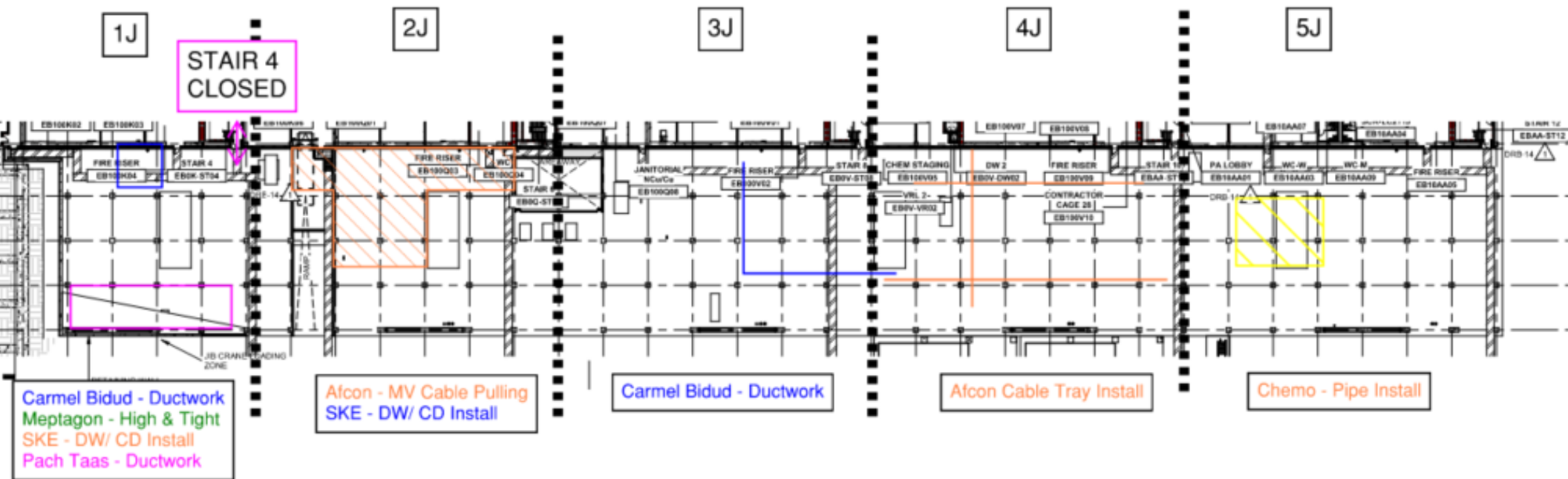


WJG 03J, 04J, 05J LIFT 2 & 3



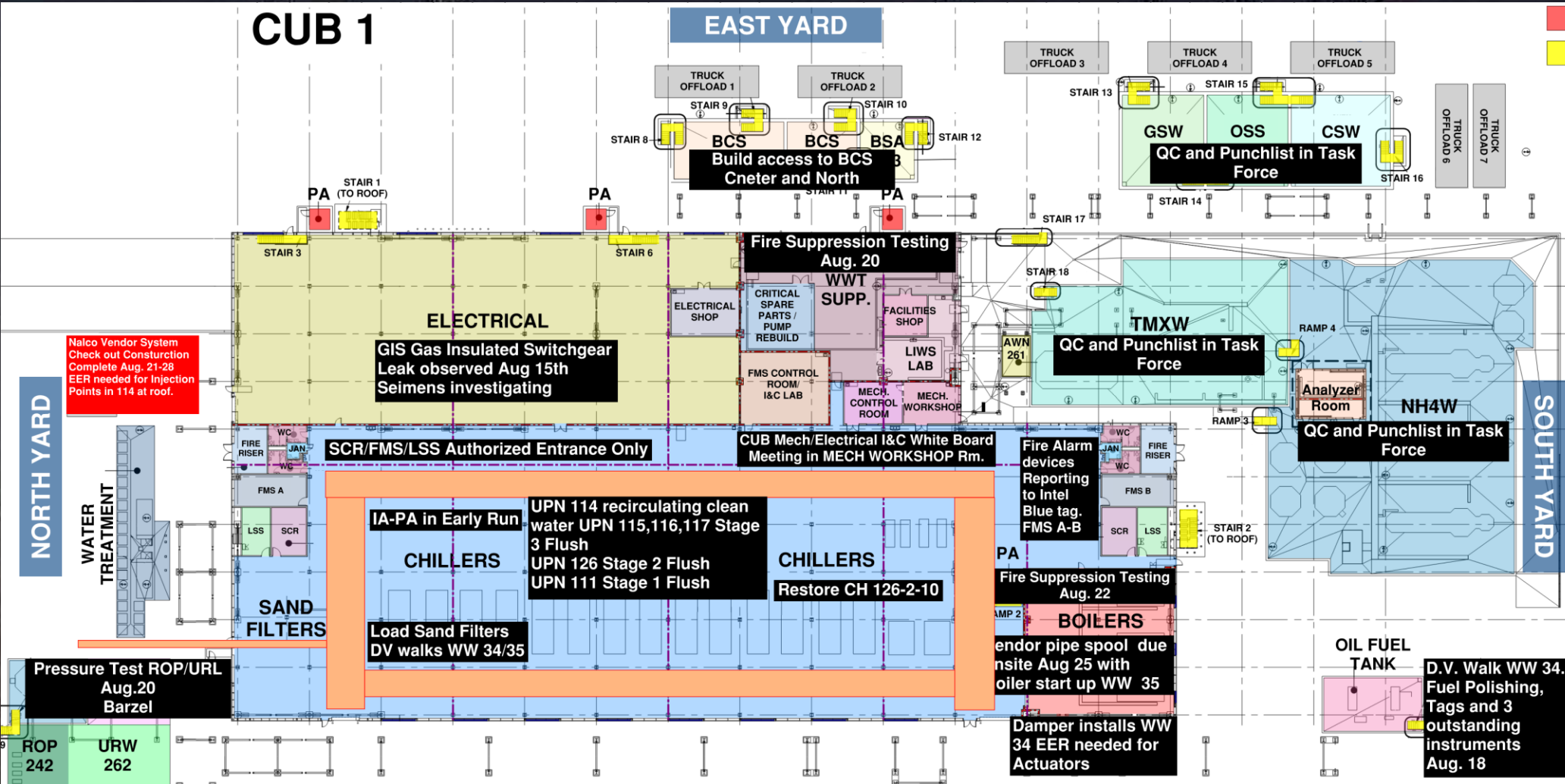


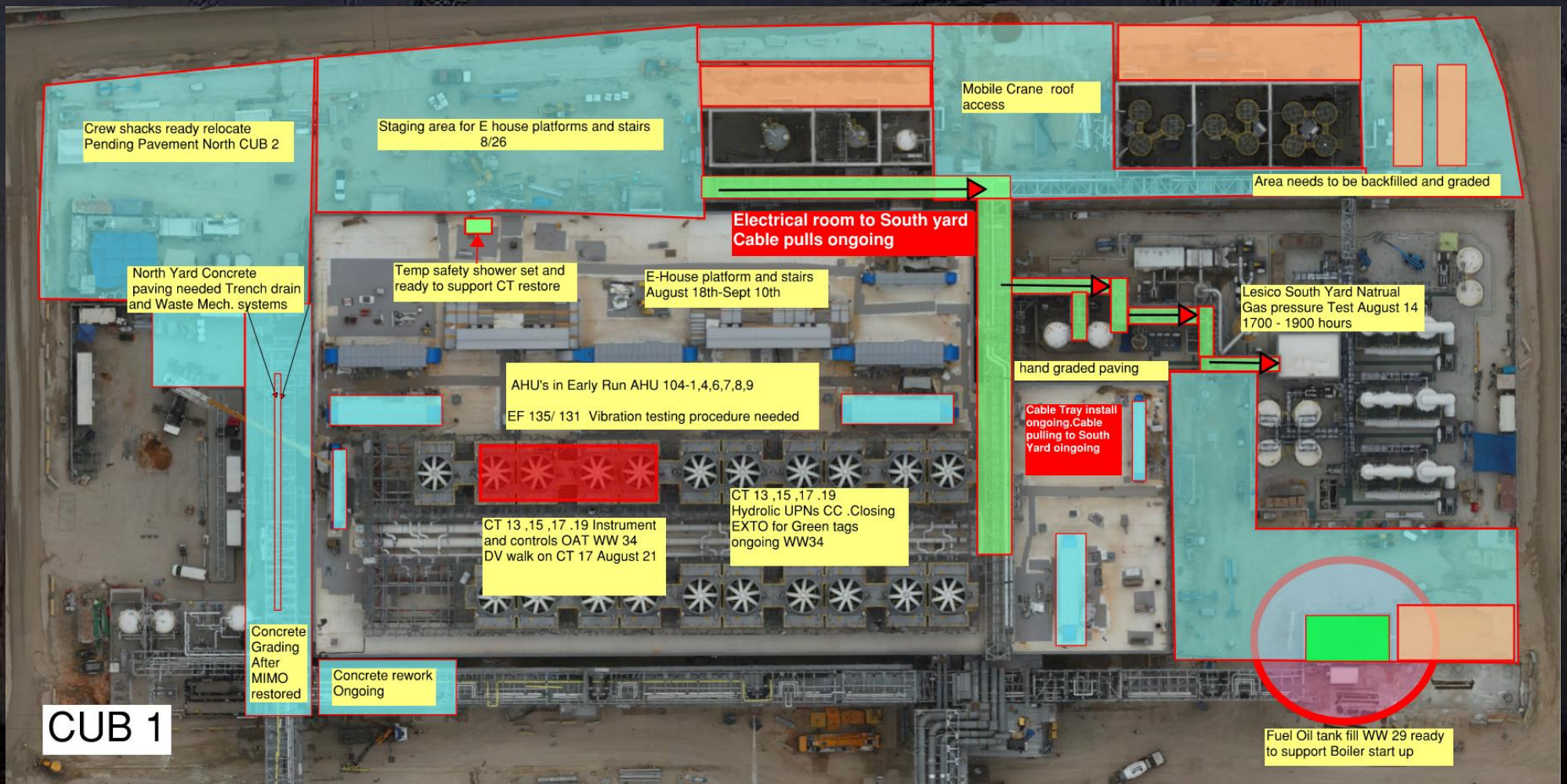
WJG UTILITY LEVEL BUILD OUT

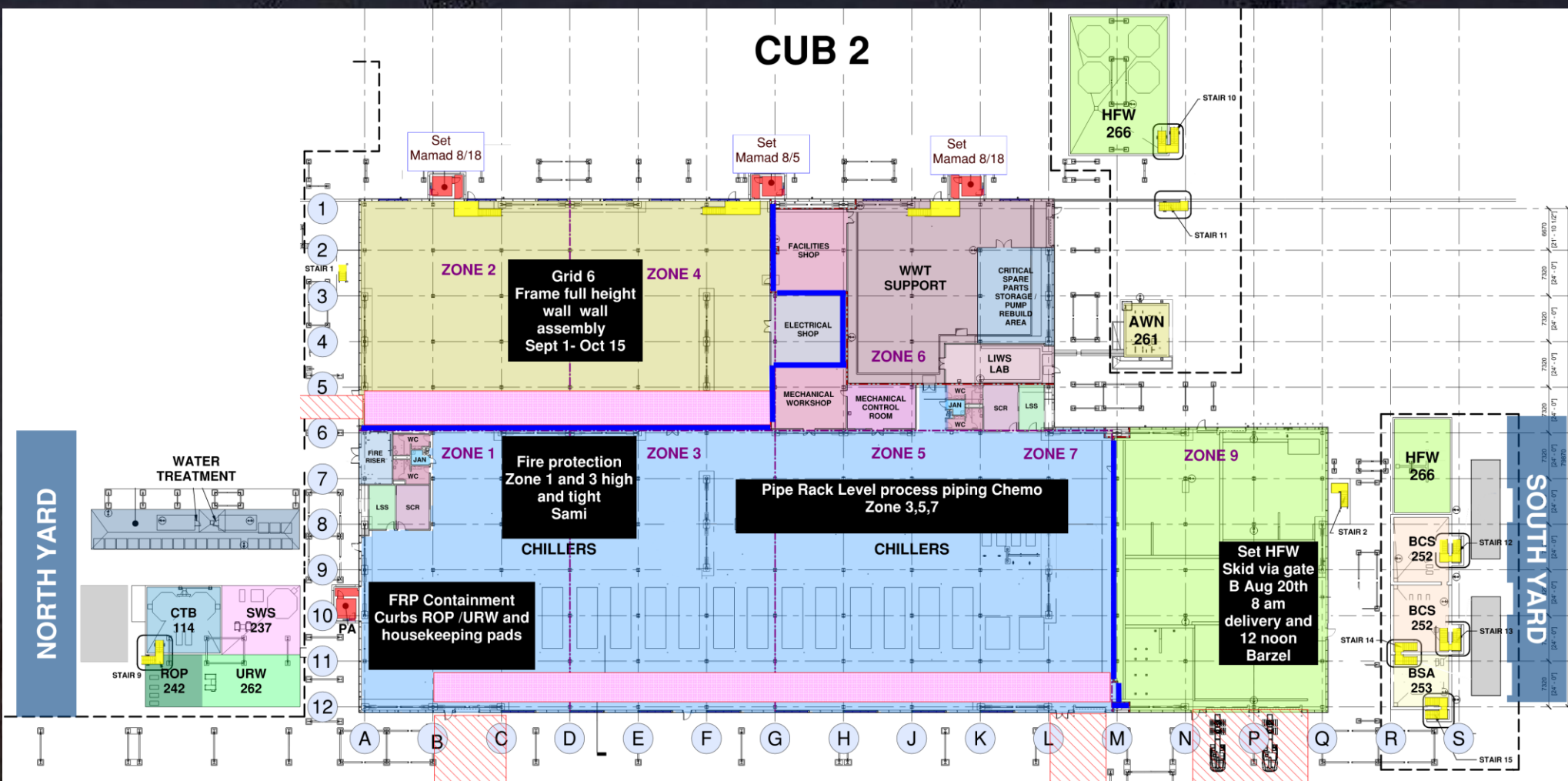


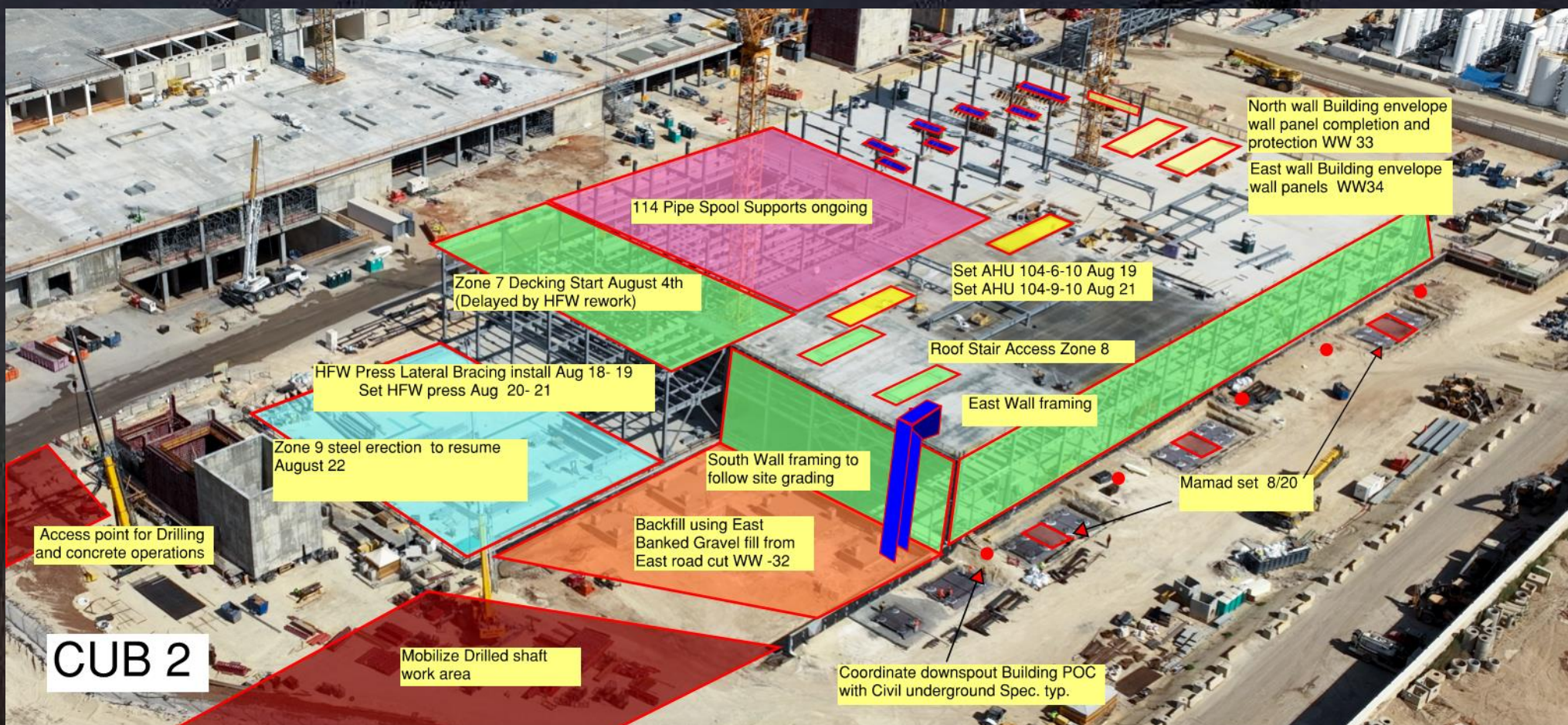


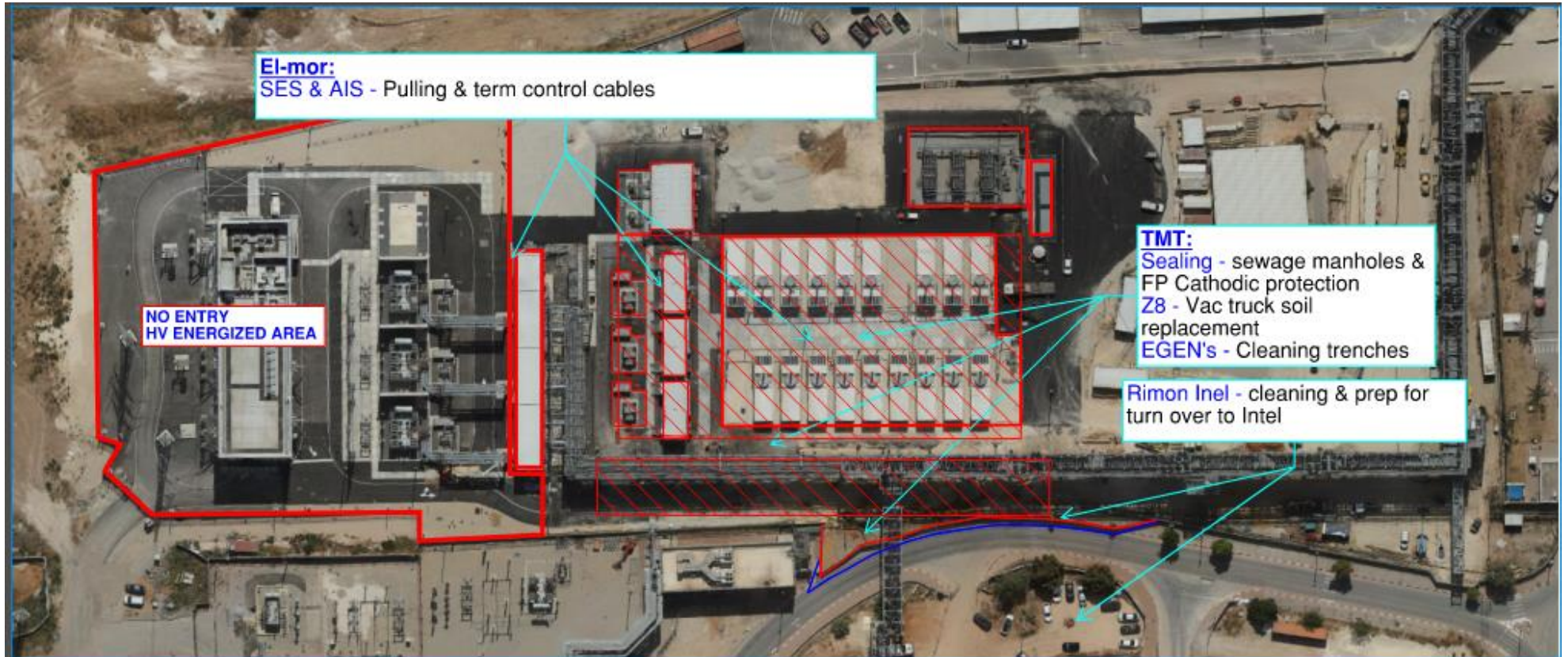
CUB 1











El-mor:
SES & AIS - Pulling & term control cables

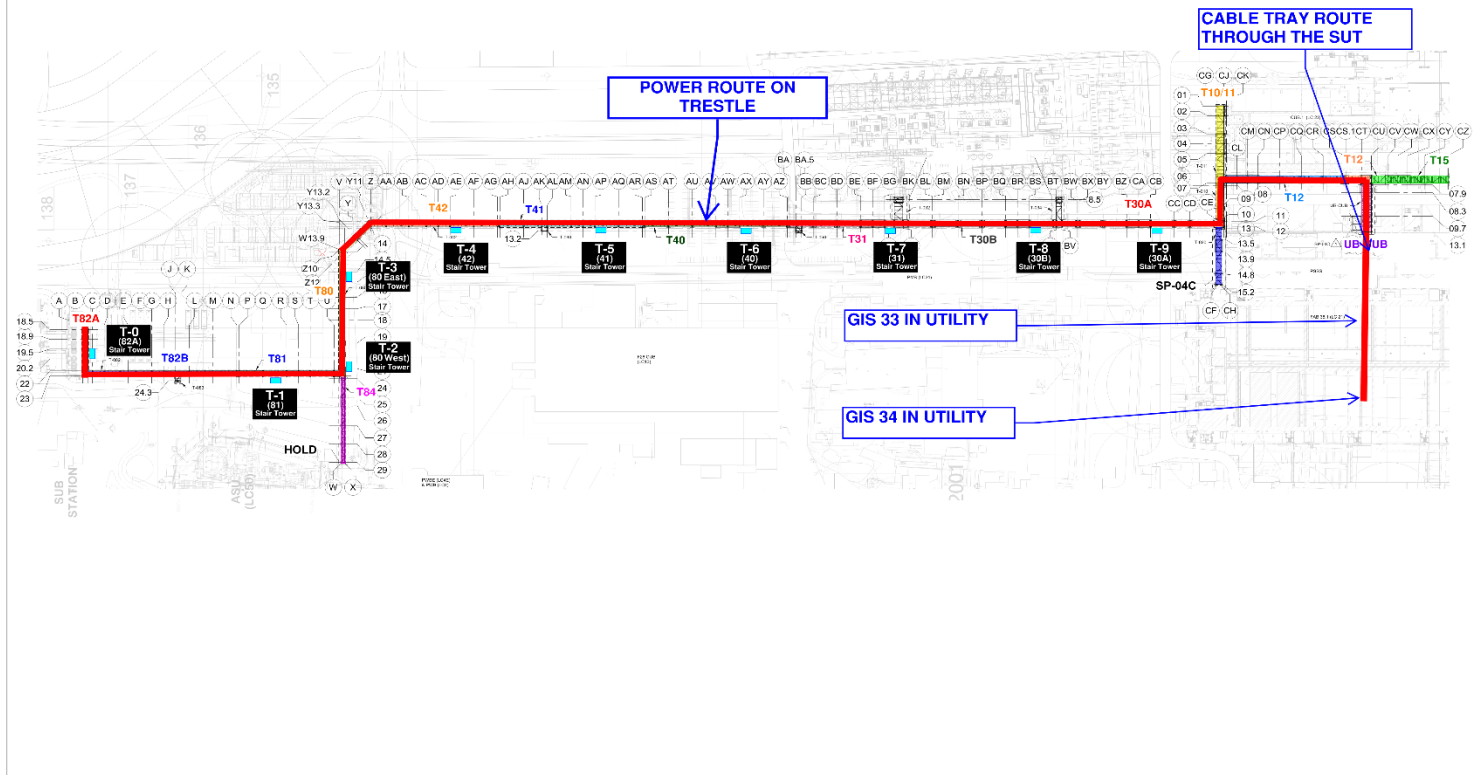
NO ENTRY
HV ENERGIZED AREA

TMT:
Sealing - sewage manholes &
FP Cathodic protection
Z8 - Vac truck soil
replacement
EGEN's - Cleaning trenches

Rimon Inel - cleaning & prep for
turn over to Intel



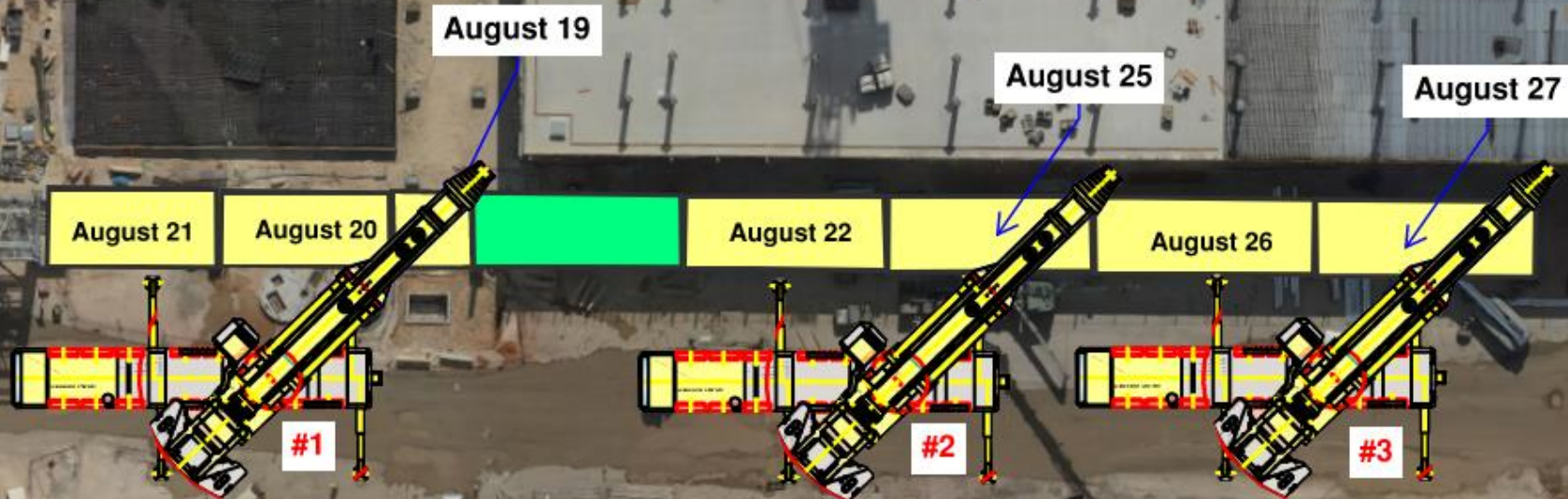
FAB GIS 33&34 Train A PERMENENT POWER AUGUST 27TH 7:00am to 8:00am.

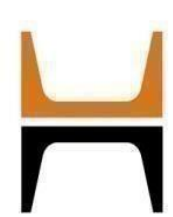




Trestle - MOD 2 Steel erection

T-17 Lvl 2





HOFFMAN CONSTRUCTION COMPANY

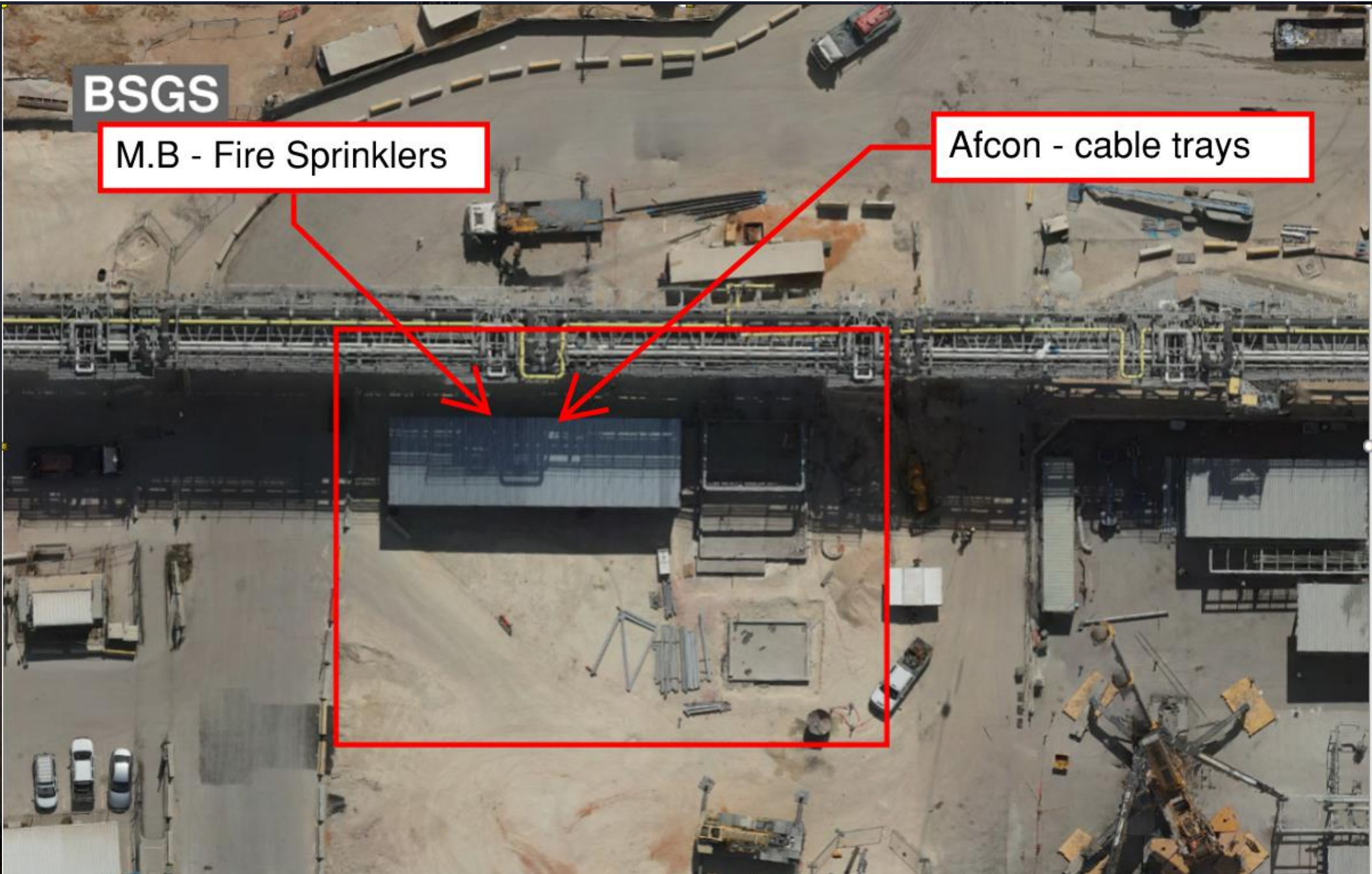


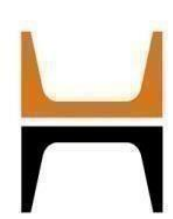
HOFFMAN
Sparrow  

BSGS

M.B - Fire Sprinklers

Afcon - cable trays



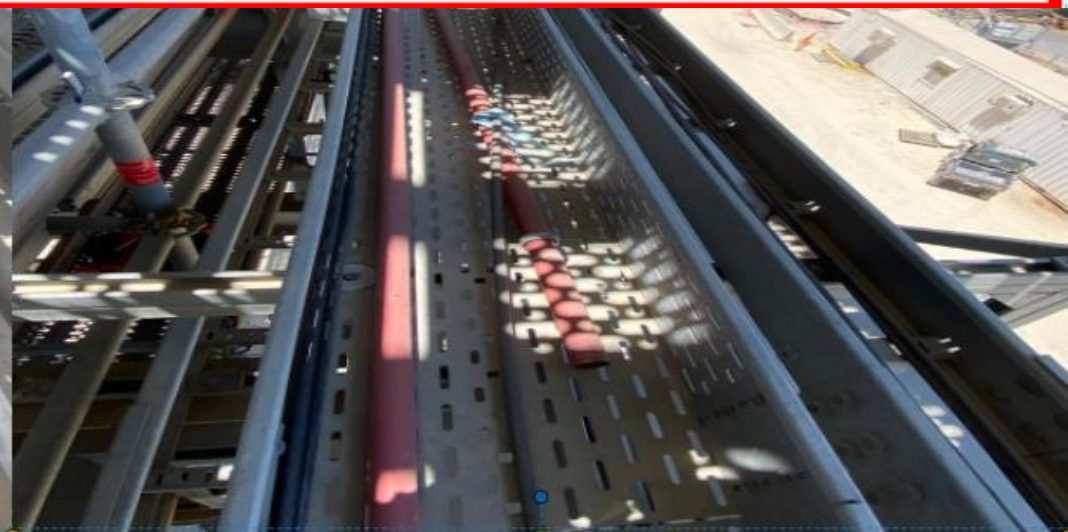


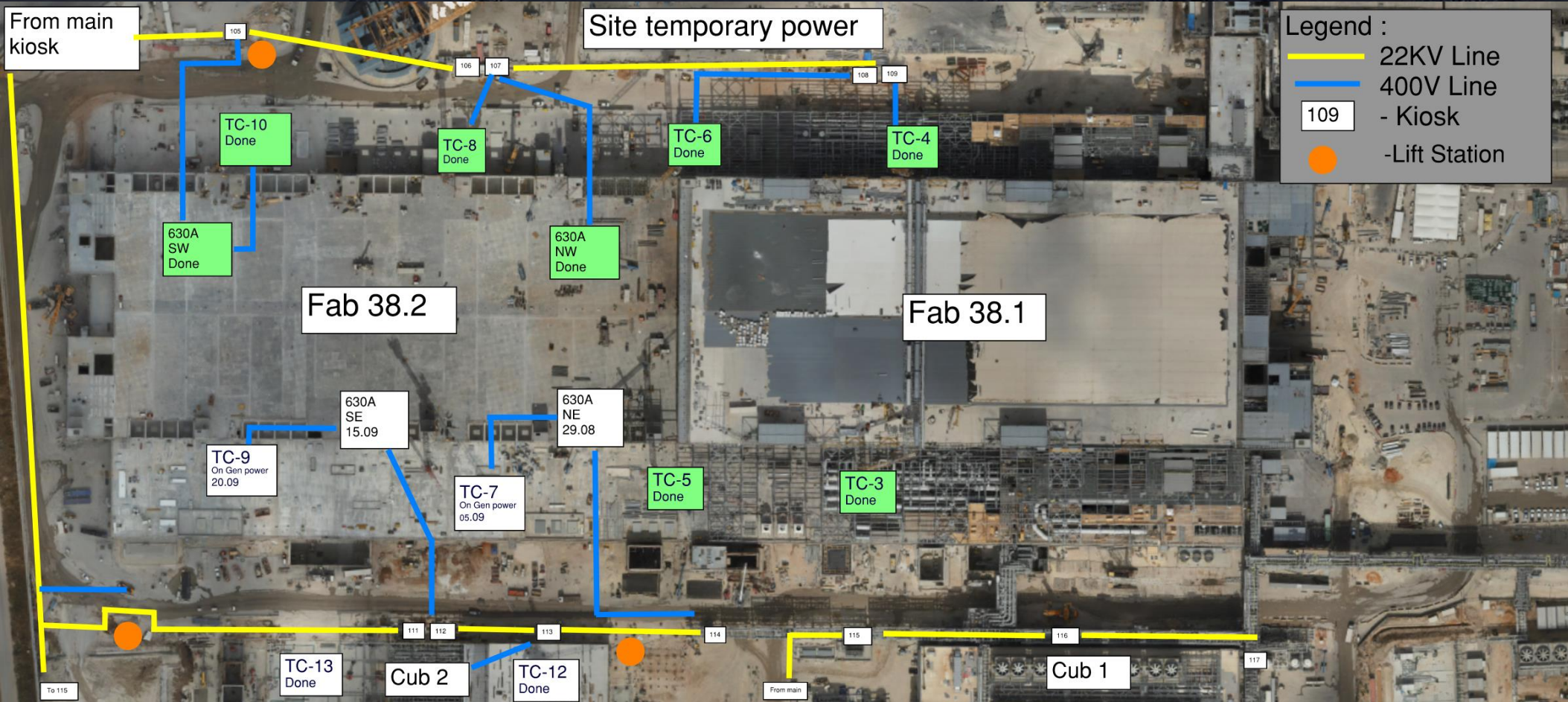
HOFFMAN CONSTRUCTION COMPANY



HOFFMAN
Sparrow  

CENTER CATWALKS LEVEL 2 FIBER OPTIC TRAYS





Daily Coordination Meeting

Site Logistics

North Gate B



Daily Coordination Meeting

Site Logistics

North



Daily Coordination Meeting

Site Logistics

South





Daily Coordination Meeting

Site Logistics

Cleanup: Subcontractor shall always keep the project free from the accumulation of waste materials caused by its employees, Subcontractor's employees, or Work on the project. Subcontractor shall continually and thoroughly cleanup and remove from jobsite, at its sole expense, all waste, debris, surplus equipment and surplus materials resulting from Subcontractor's operations. If Subcontractor fails to clean up such waste, debris, surplus materials and surplus equipment, such clean up and removal will be done by others and costs for this work will be deducted from the Subcontract by Contractor.



Daily Coordination Meeting

Site Logistics

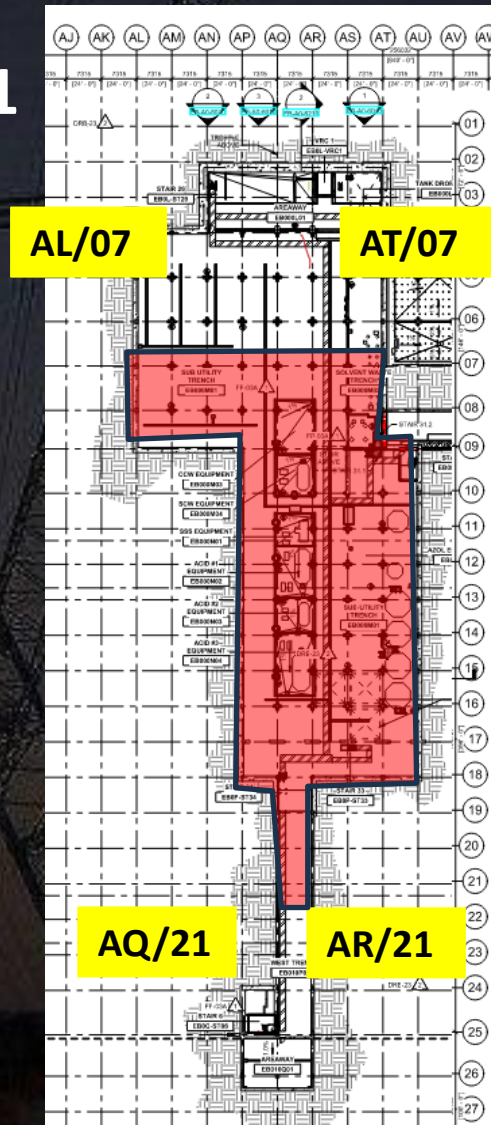
Site Cleanup



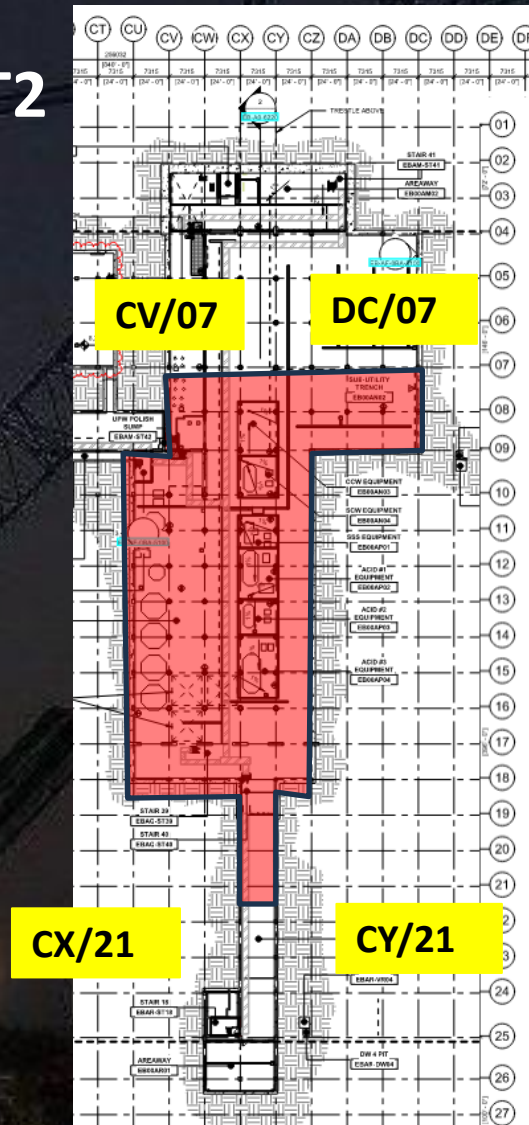
Daily Coordination Meeting

Site Logistics - Protected Areas (SUT Level)

SUT1

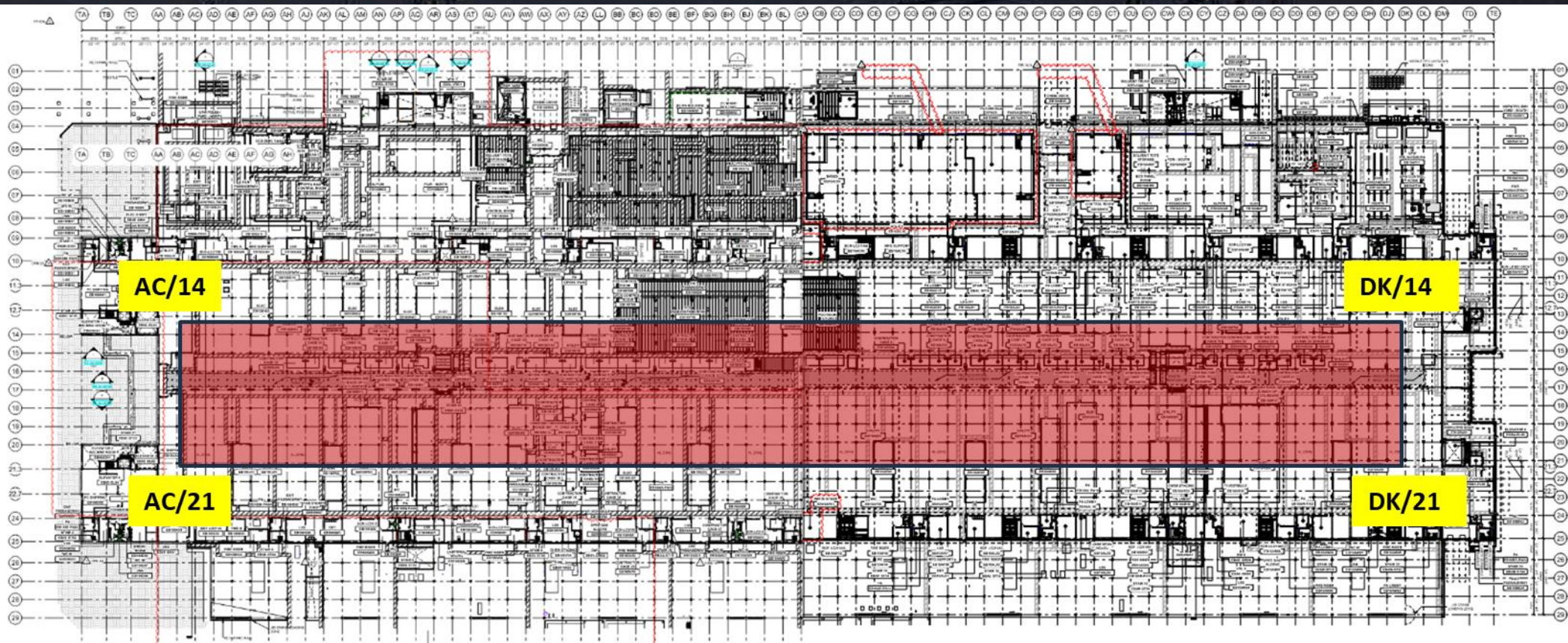


SUT2



Daily Coordination Meeting

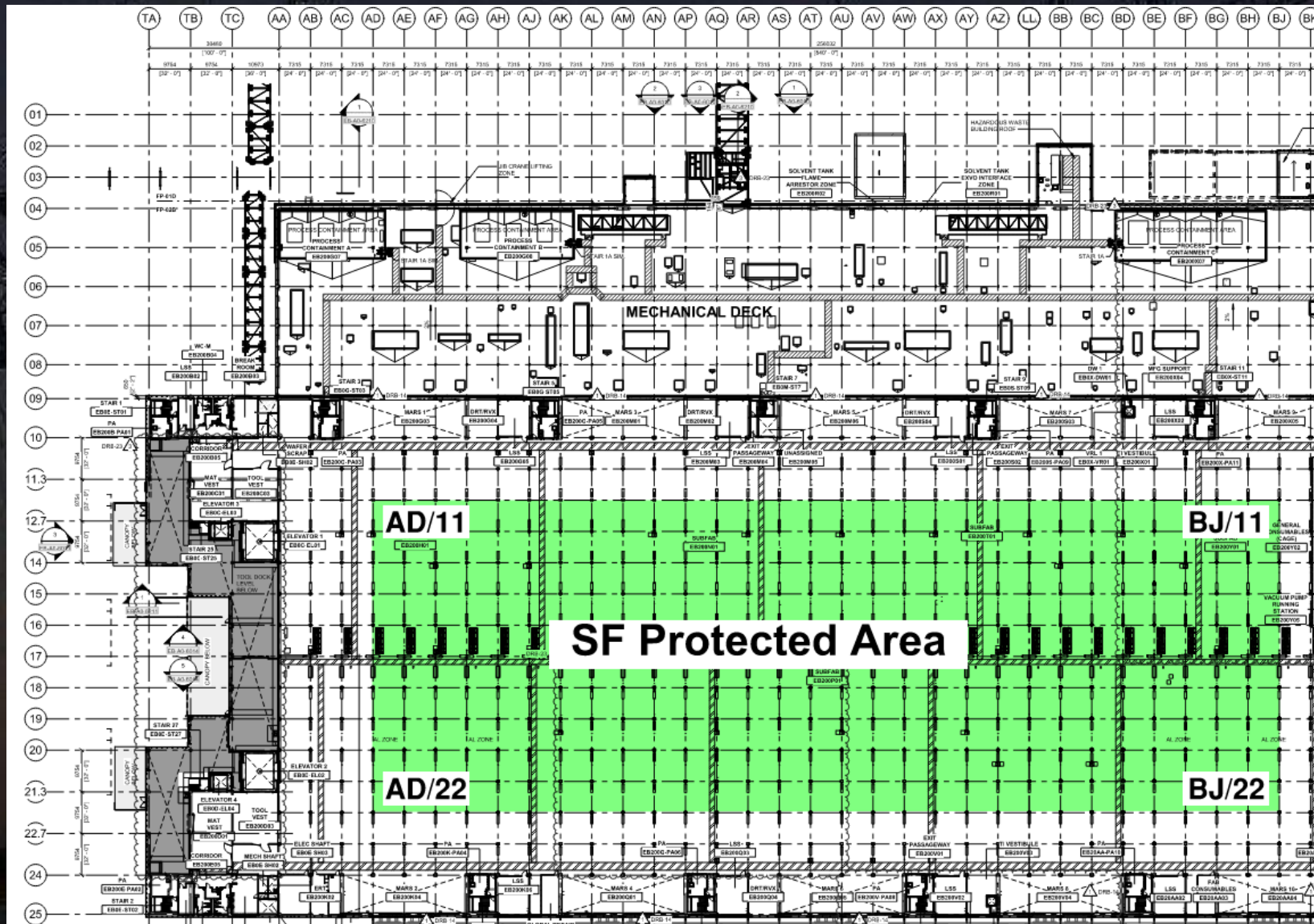
Site Logistics - Protected Areas (Utility Level)





Daily Coordination Meeting

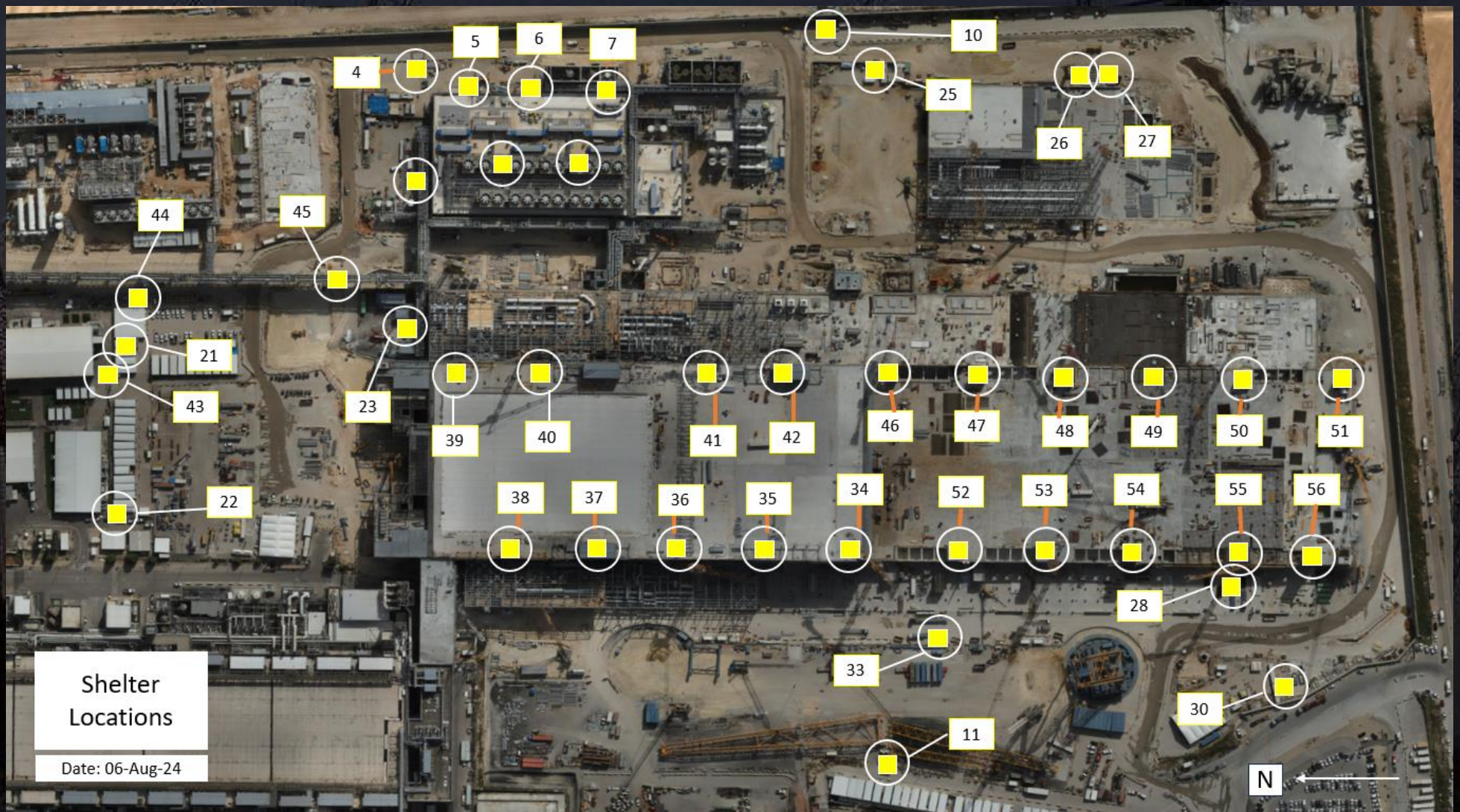
Site Logistics - Protected Areas (Subfab Level)



Daily Coordination Meeting

Site Logistics

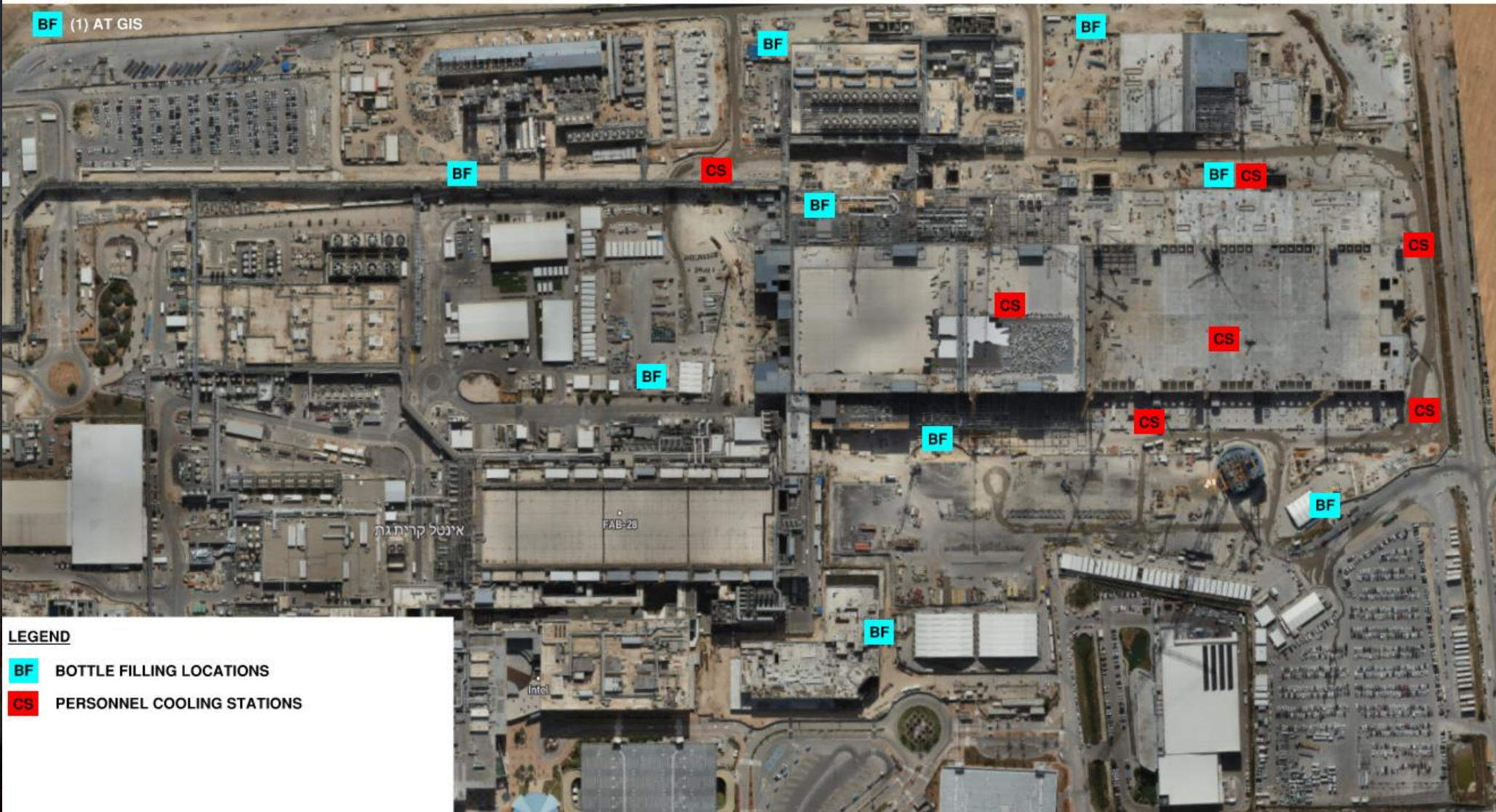
Protected Areas



Daily Coordination Meeting

WATER BOTTLE FILLING & PERSONNEL COOLING STATIONS

BF (1) AT GIS





Housekeeping


- Looking at the job site, we did not do an extra good clean up on Thursday. Housekeeping is not just about the job site looking nice and orderly.
- It is important to reduce congestion and pinch points—creating fewer opportunities for someone to become caught between 2 objects.
- It is important to remove fire hazards—reducing the chance that combustibles will be ignited, because they won't be there.
- It is important to remove tripping hazards—removing the obstacles that someone could trip over.
- It is important to stack material safely—ensuring that our material doesn't shift unexpectedly and strike someone.
- It is important to have a clear area so that hazards are more obvious while workers are focused on what they're doing.

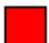
Heat Index- August 26th

	temperature (°F)																	
	80	82	84	86	88	90	92	94	96	98	100	102	104	106	108	110		
Relative Humidity (%)	40	80	81	83	85	88	91	94	97	100	103	106	109	114	119	124	130	136
	45	80	82	84	87	89	93	96	100	104	109	114	119	124	130	137		
	50	81	83	85	88	91	95	99	103	108	113	118	124	131	137			
	55	81	84	86	89	93	97	101	106	112	117	124	130	137				
	60	82	84	88	91	95	100	105	110	116	123	129	137					
	65	82	85	89	93	98	103	108	114	121	128	136						
	70	83	86	90	95	100	105	112	119	126	134							
	75	84	88	92	97	103	109	116	124	132								
	80	84	89	94	100	106	113	121	129									
	85	85	90	96	102	110	117	126	135									
	90	86	91	98	105	113	122	131										
95	86	93	100	108	117	127												
100	87	95	103	112	121	132												

 Caution

 Extreme Caution

 Danger

 Extreme Danger

Extreme Caution Bordering on Danger

- Ensuring water and shaded areas available
- Acclimating workers
- Emergency planning and response
- Training workers and supervisors on the signs of heat stress and preventative measures
- Modified work schedules and/or rotating out workers
- Monitoring of workers for signs of heat stress
- Additional water breaks mandated. (Can be in work area)
- Increased rotation and monitoring of workers and area conditions.

Daily Coordination Meeting



14:00 Sign In