

Daily Coordination Meeting



14:00 Sign In

Daily Coordination Meeting

General Topics:

- **More Wet Weather in the Forecast**



5RA roof hatch pour
back
4:00 am

5RA smoke vent
curbs x2
6:30 am

Roof hatches will be poured with
the 220 on West side and 500 on
the East side starting at 4:00 am

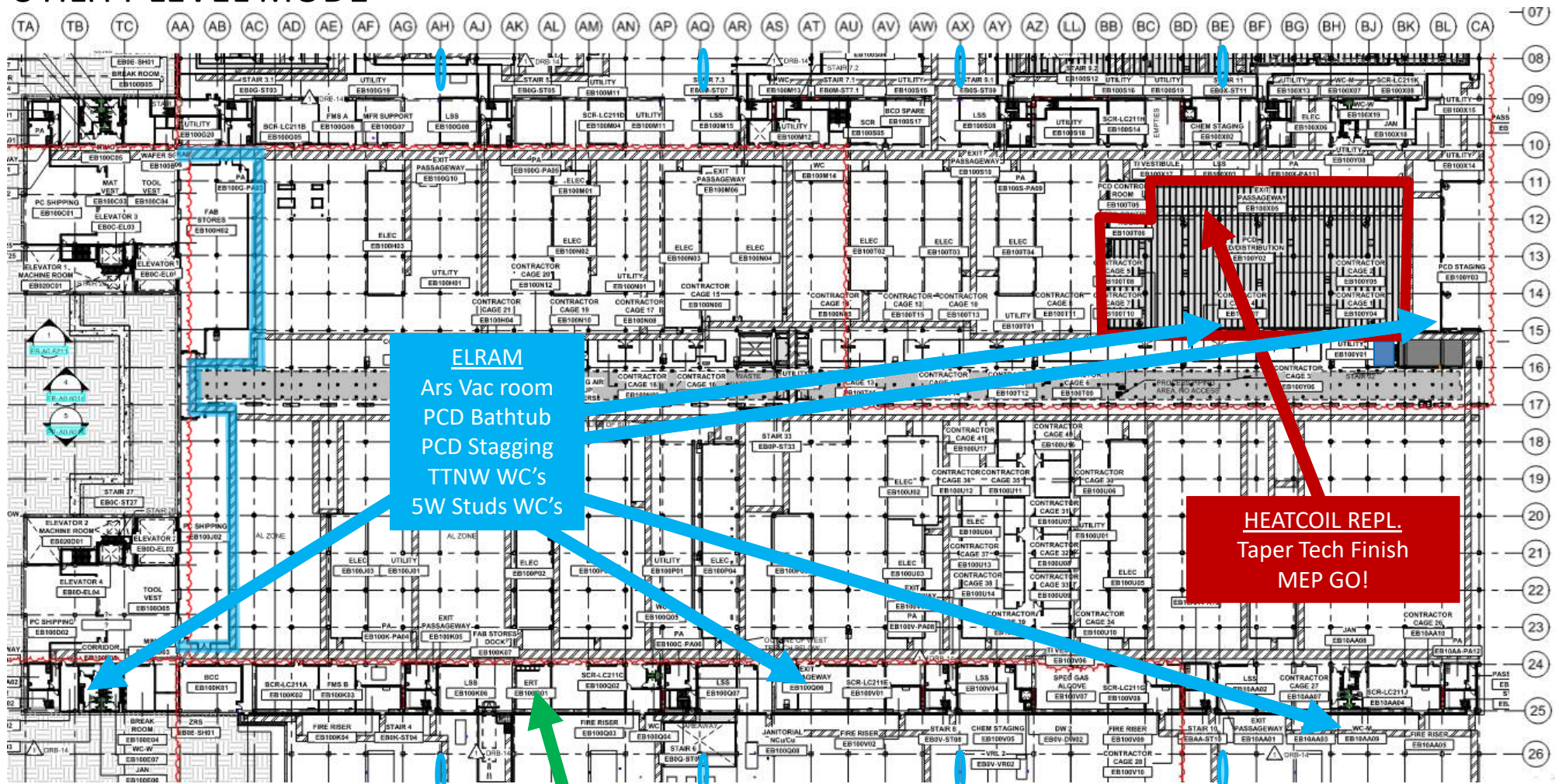
smoke vent curbs will be poured
with TC5 at 6:30 am and TC7 at
7:00 am

SWTT 4DA - AHU will be poured
with the 1250 at 4:00 am

5RA roof hatch pour
back
4:00 am

SWTT 4DA - AHU
4:00 am

UTILITY LEVEL MOD1





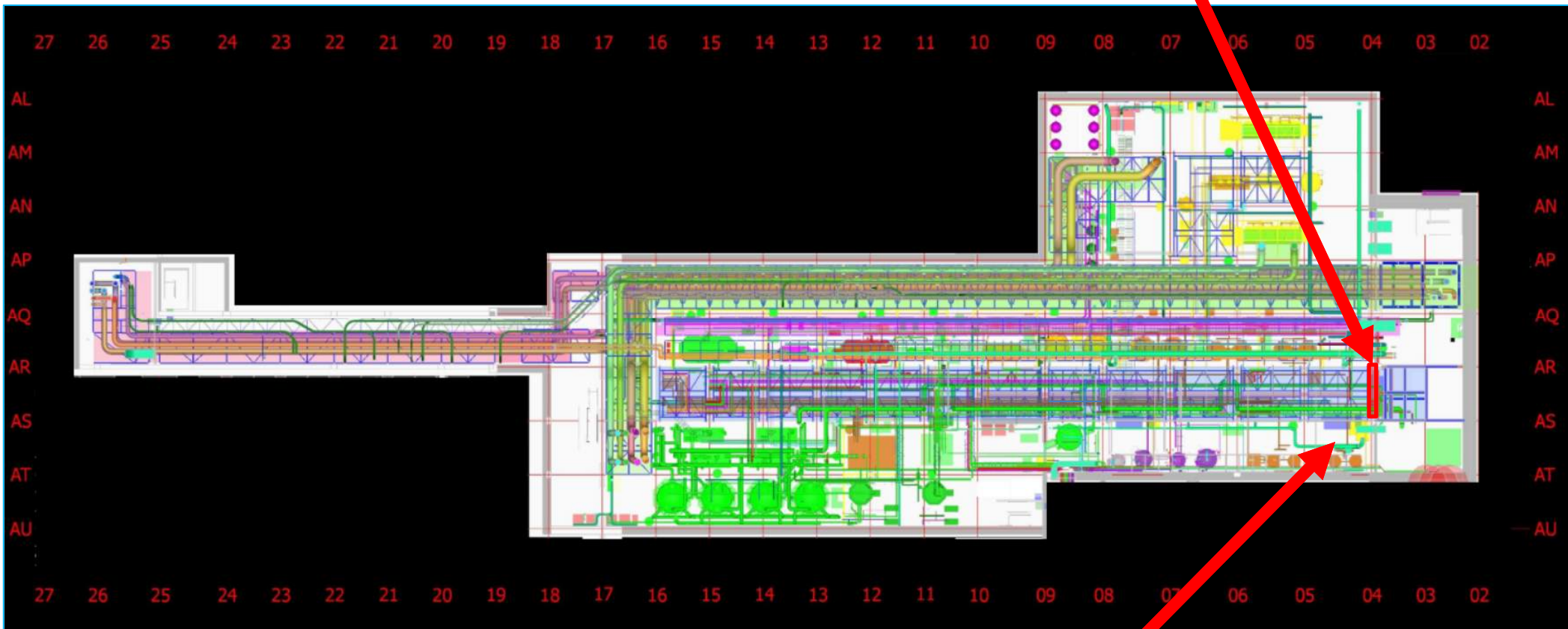
Don't bring any material without coordination with Oscar M.

Staggering material is possible but must be coordinated and must follow the rules (no combustibles, nothing touch the floor ETC.)

Thanks.

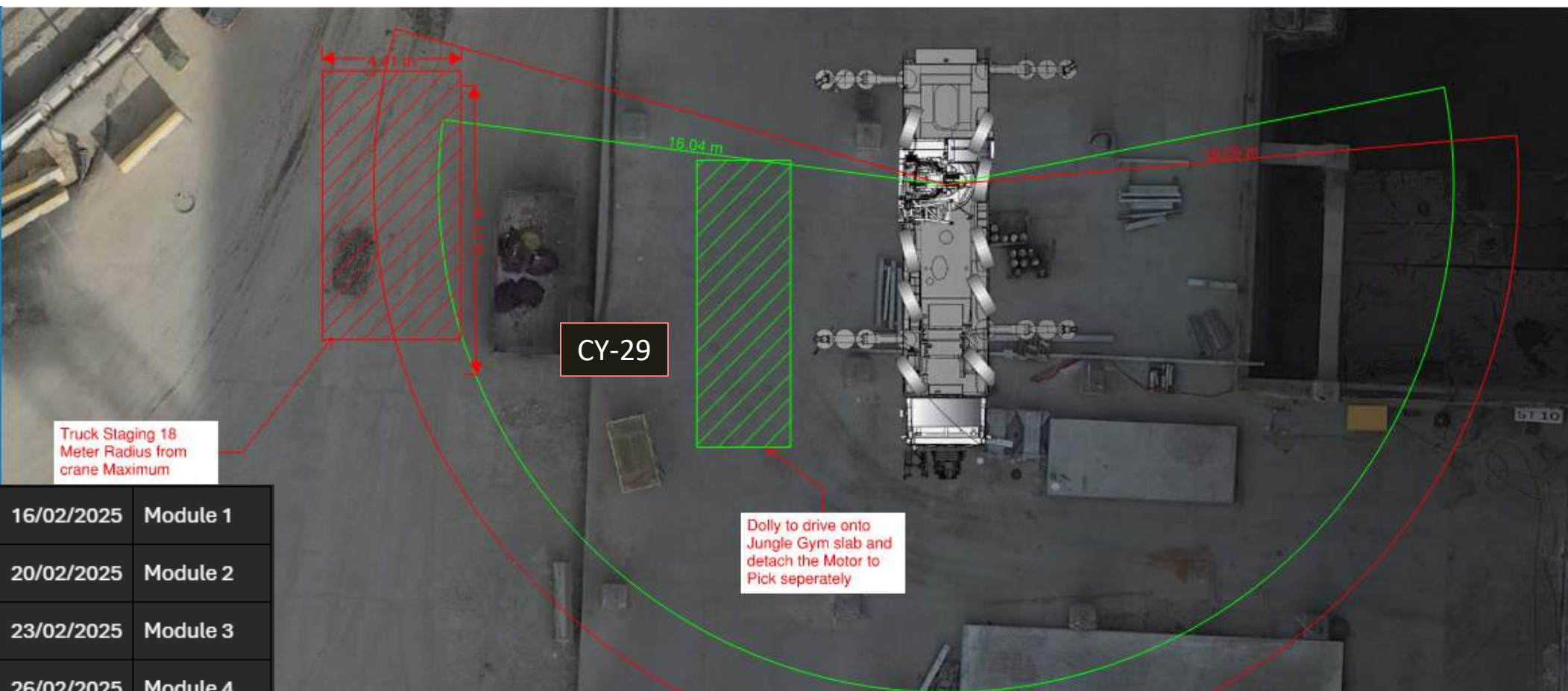
SUT 38.1 LEVEL

OH roll-up door
Install
?



HYG
SOG platform install
Ongoing

West SUT2 Rack 6



16/02/2025	Module 1
20/02/2025	Module 2
23/02/2025	Module 3
26/02/2025	Module 4
02/03/2025	Module 5
04/03/2025	Module 6



HOFFMAN CONSTRUCTION COMPANY



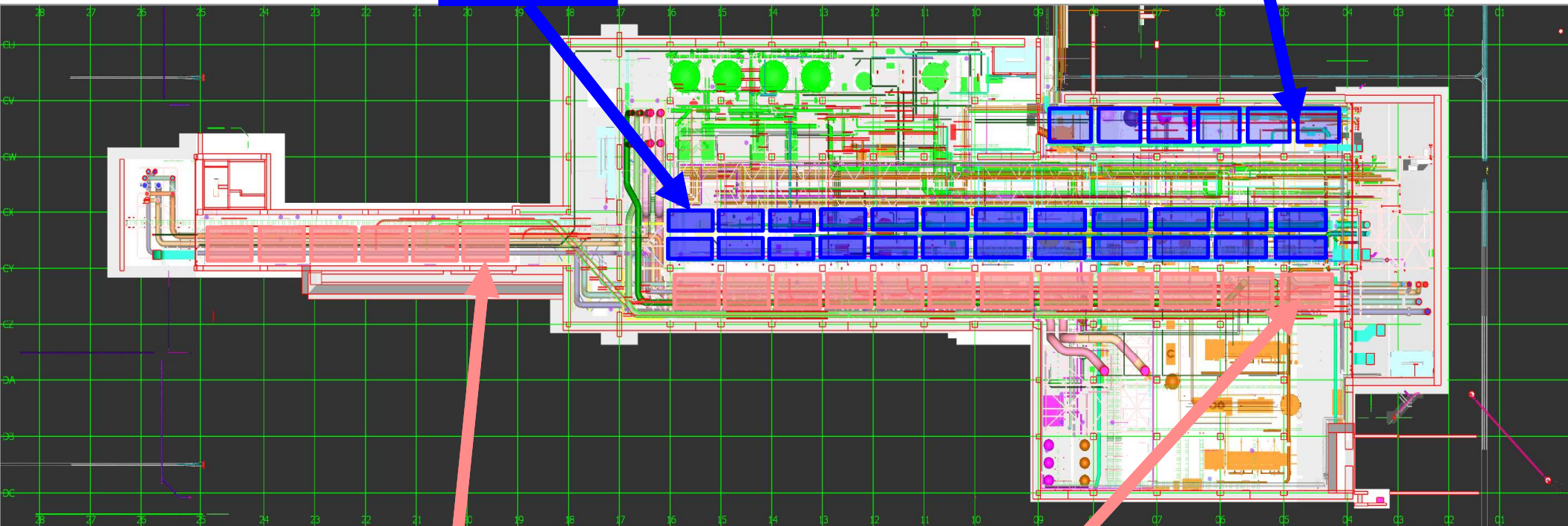
SUT 38.2 LEVEL

Rack 1B
Pending
lifting EQP

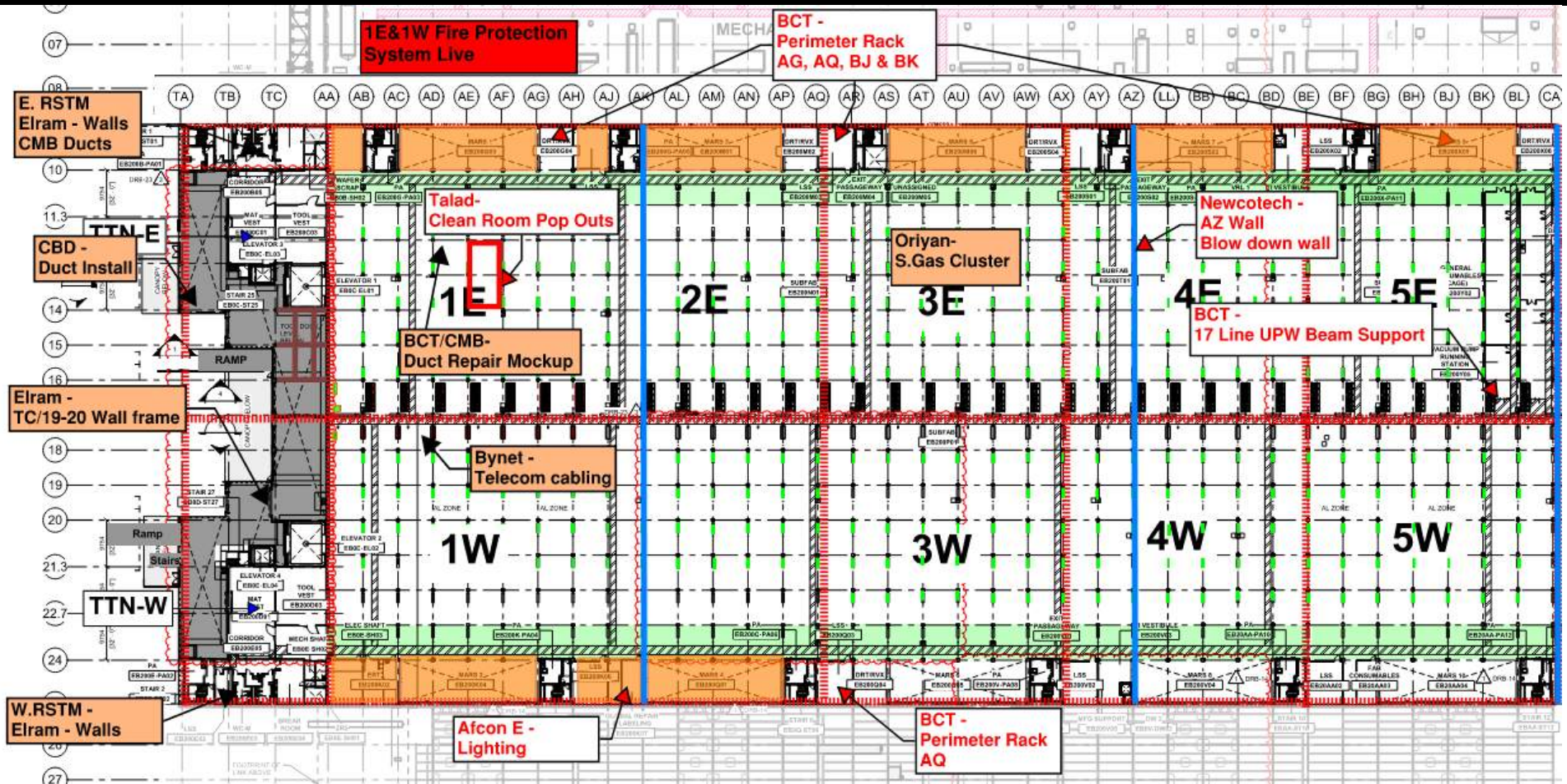
Rack 4b
Inter
Connection's

Rack 6
MIMO -
Module #1
16.2.25

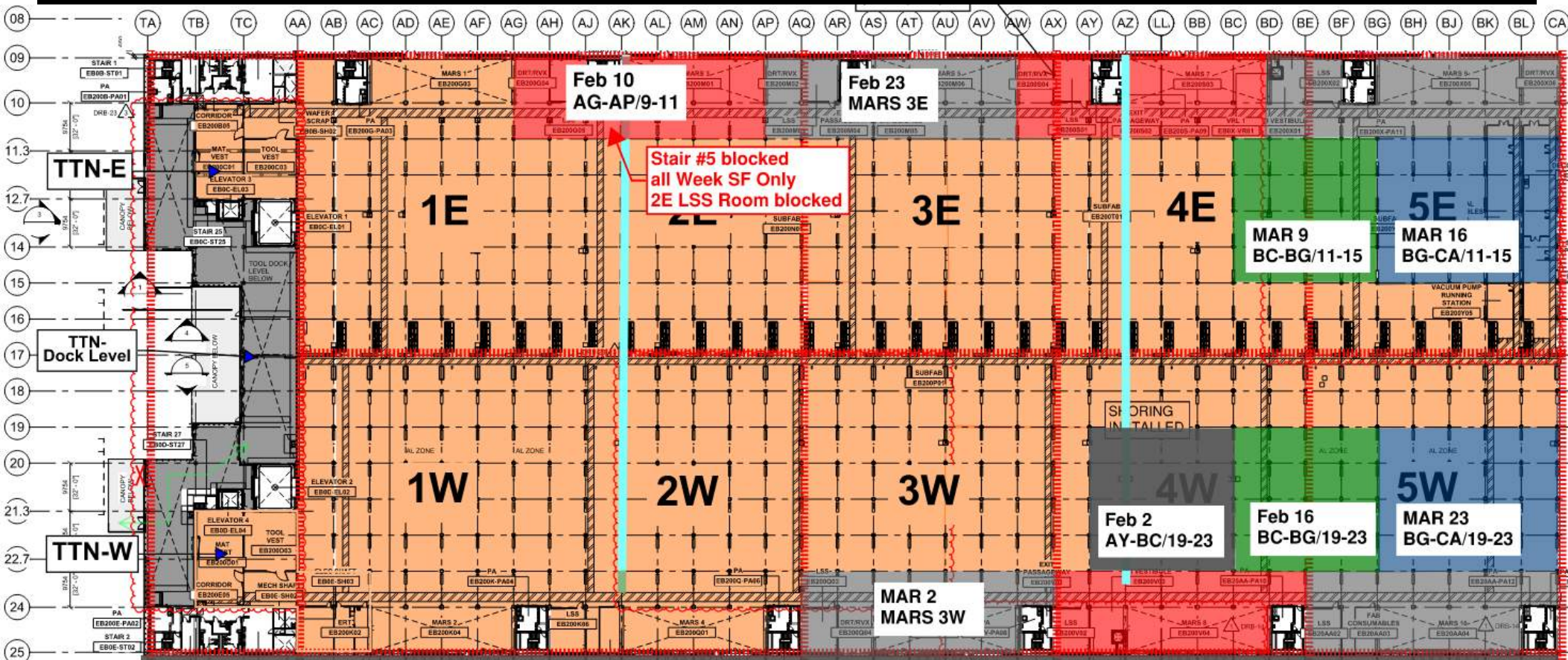
Rack 2
MIMO -
Module #12
10.2.25



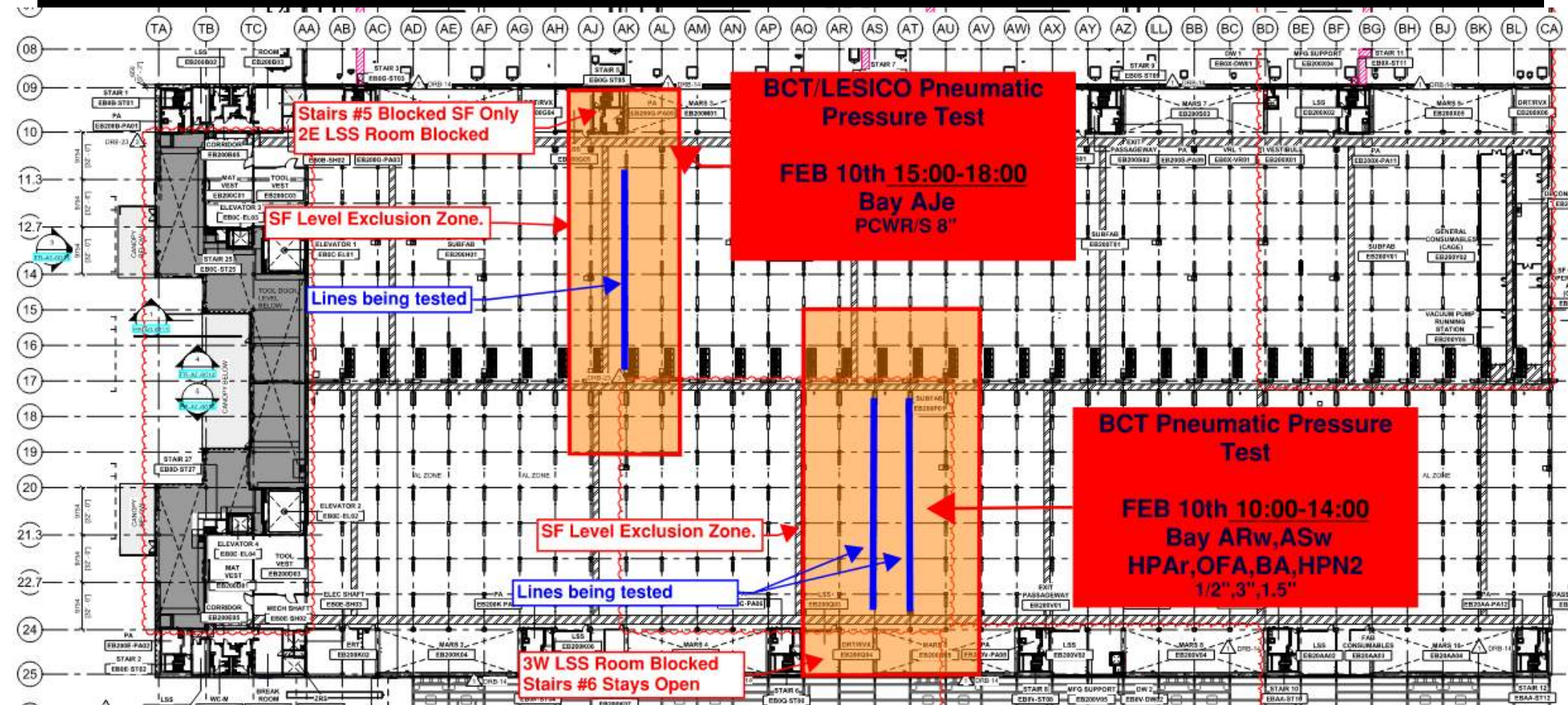
SUBFAB BUILDOUT MOD 1



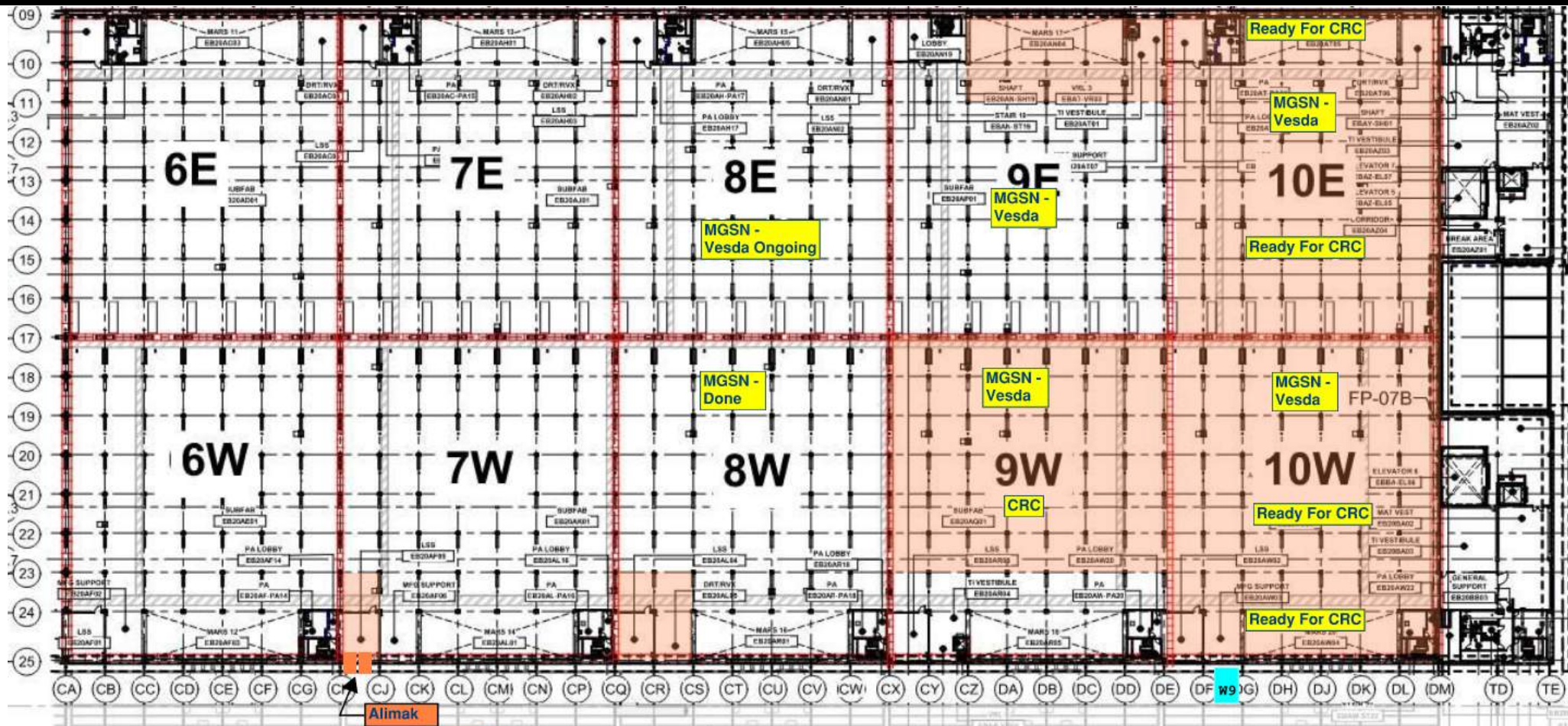
SUBFAB CRC TOPCOAT



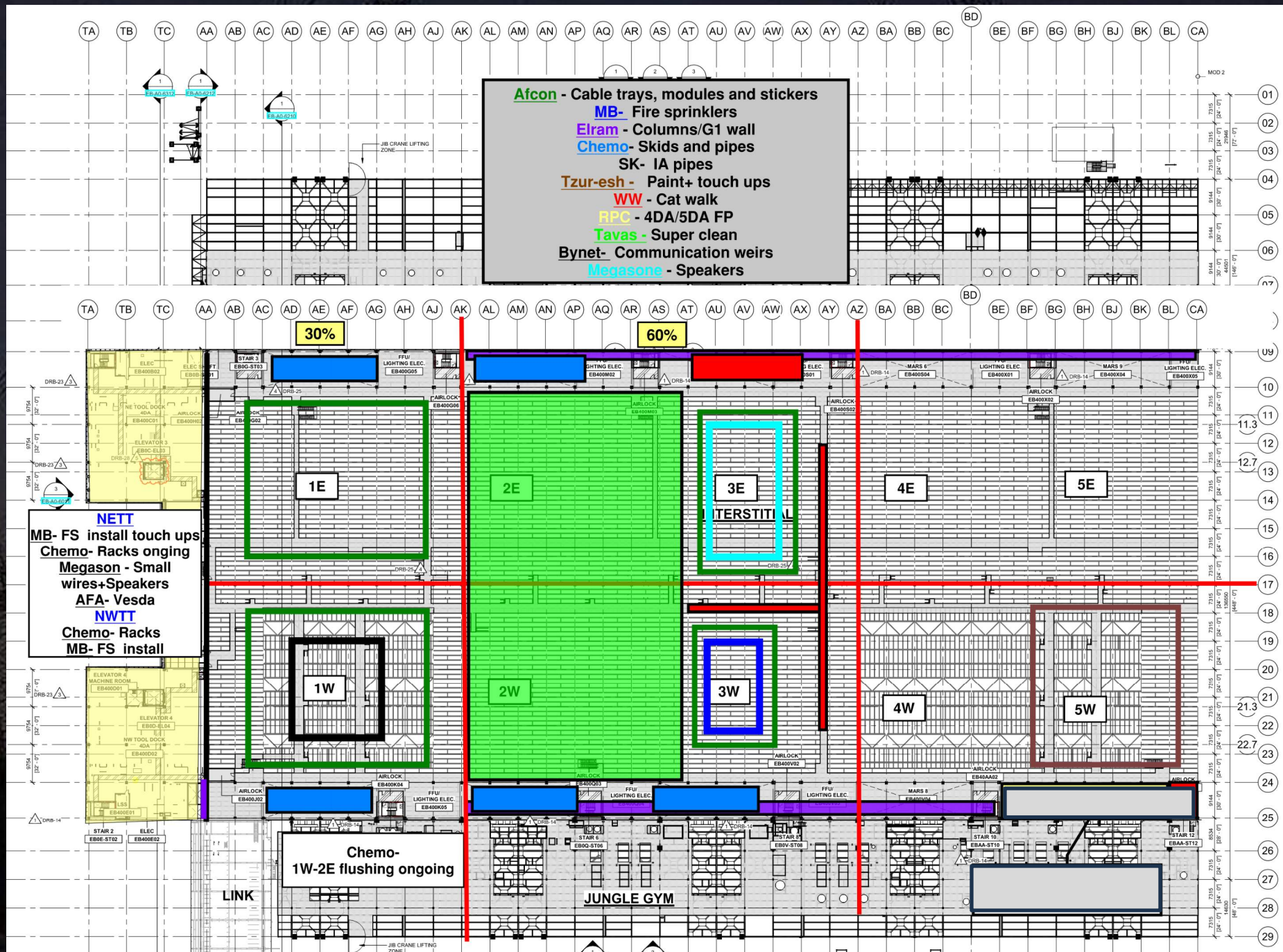
BCT Pressure Tests Tomorrow

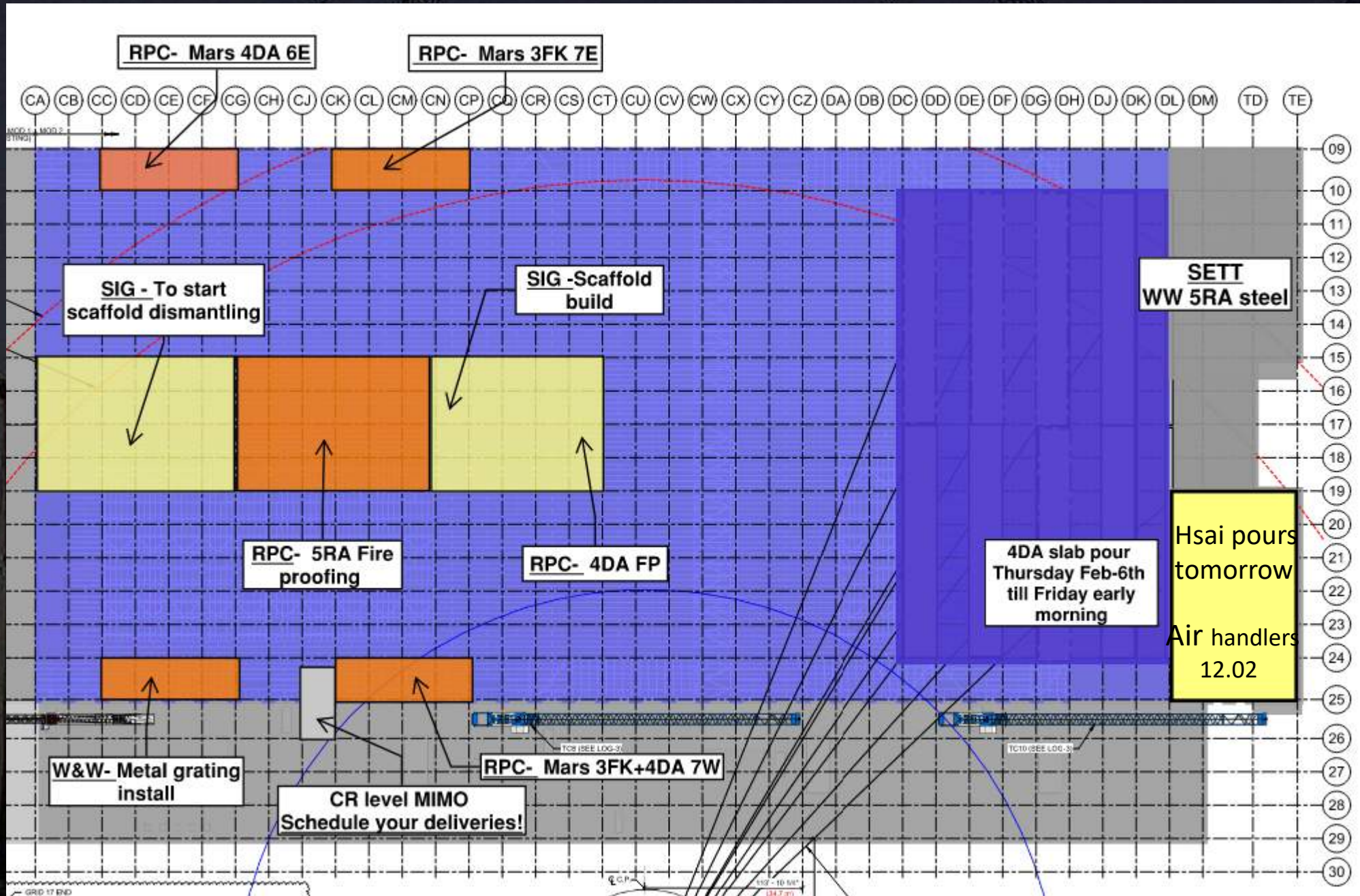


SUBFAB BUILDOUT MOD 2





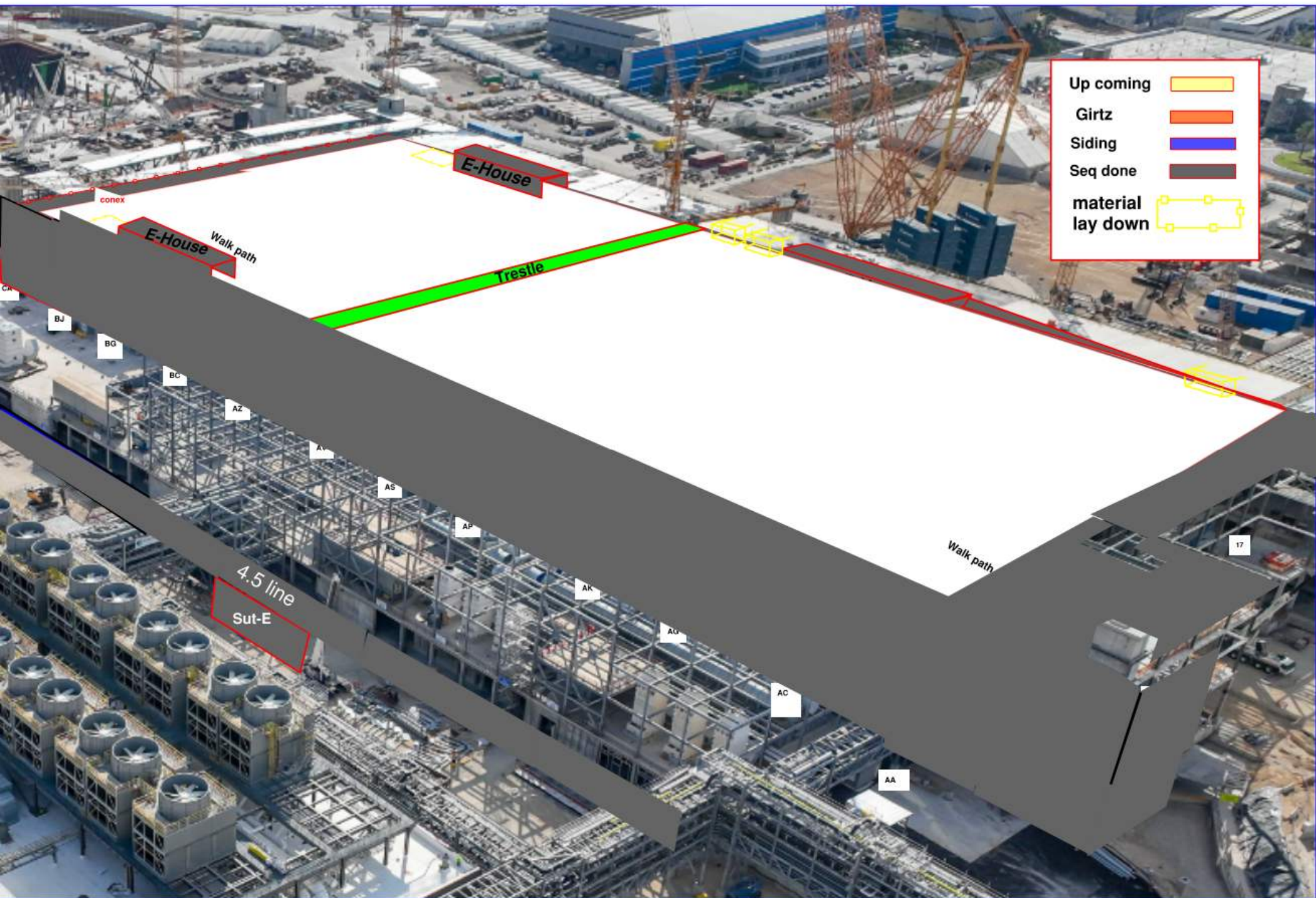


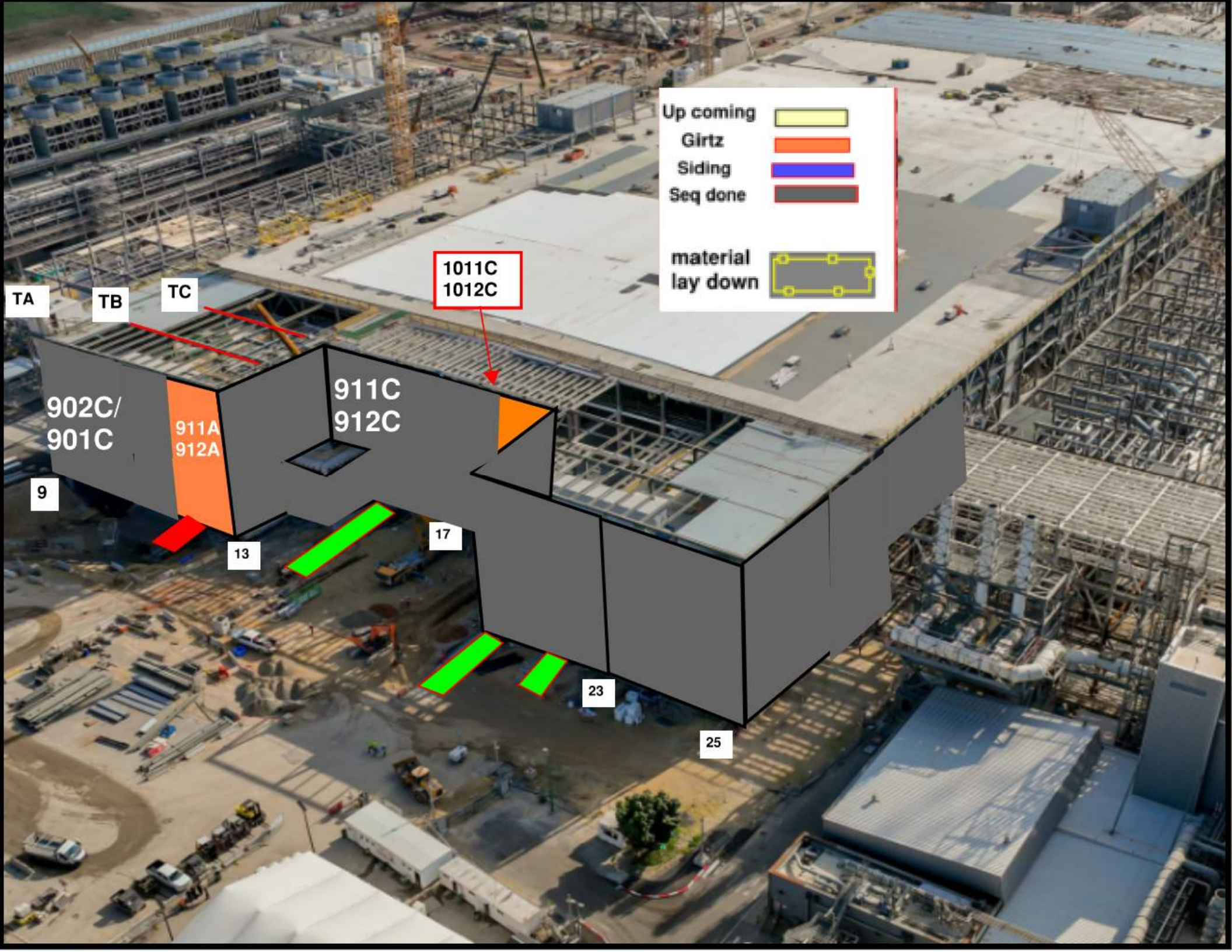




Alimak Shut Down
night Shift
Sunday + Monday
from 16:00 p.m till
05:00 a.m

LIFTS
WED
4.30





Up coming

Girtz

Siding

Seq done

material lay down

TA

TB

TC

1011C
1012C

902C/
901C

911A
912A

911C
912C

9

13

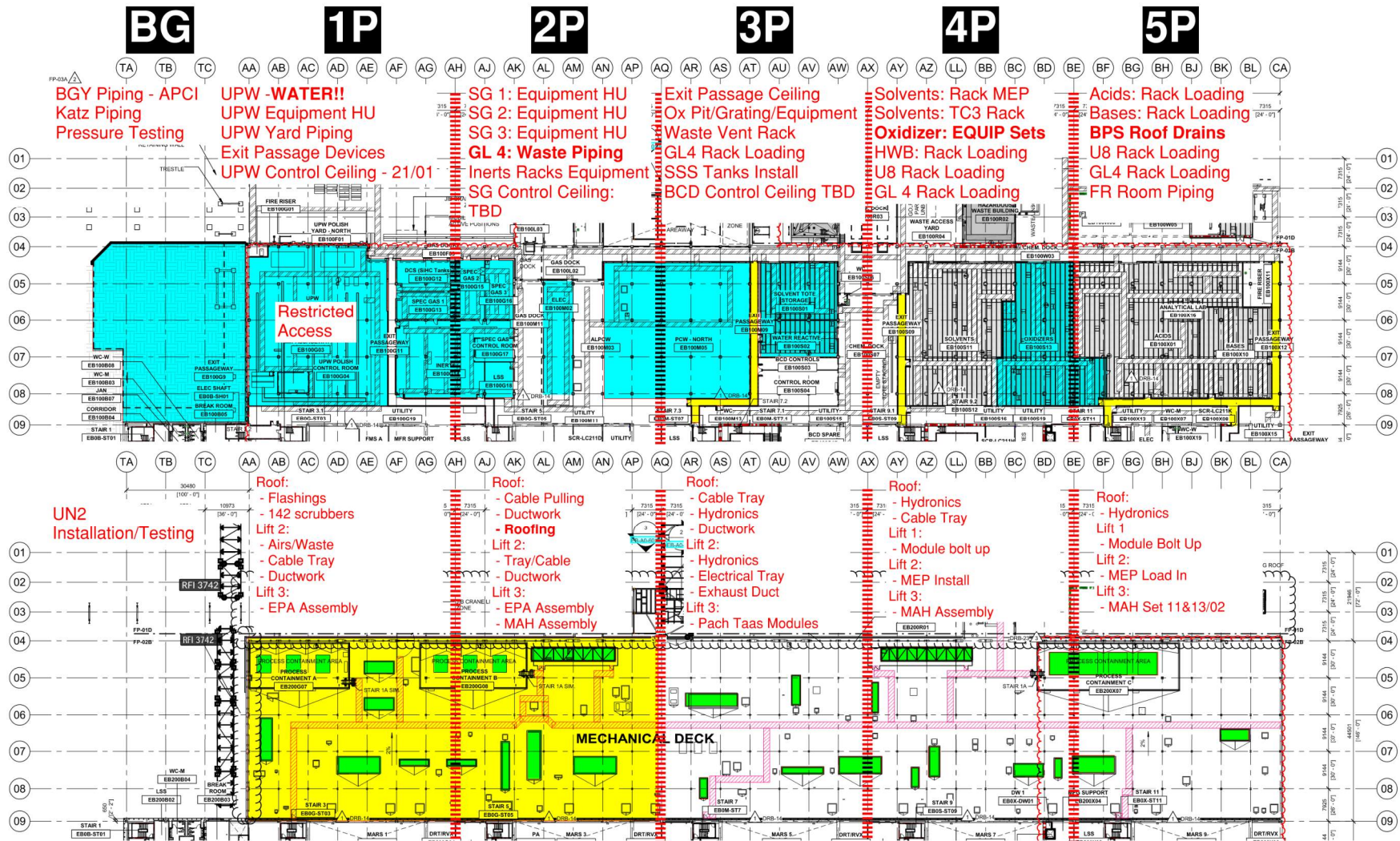
17

23

25

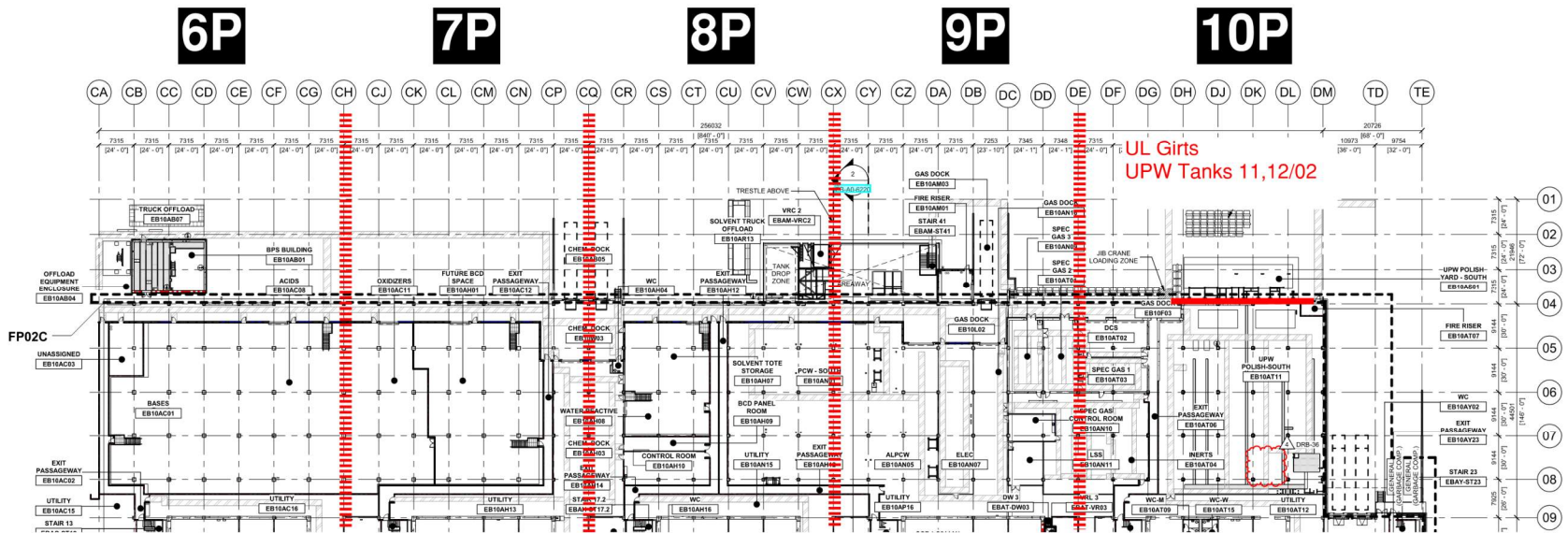


PSSS.1

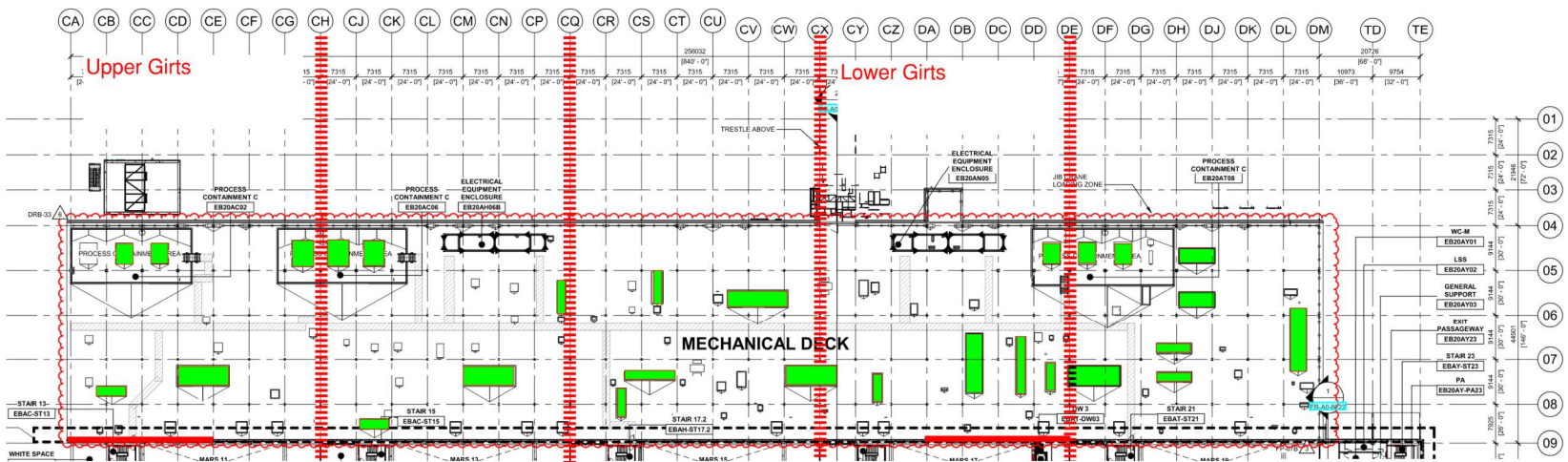


PSSS.2

Utility Level 1YA



PSSS Roof 2SA



PSSS 05/02 Pressure Tests

BG

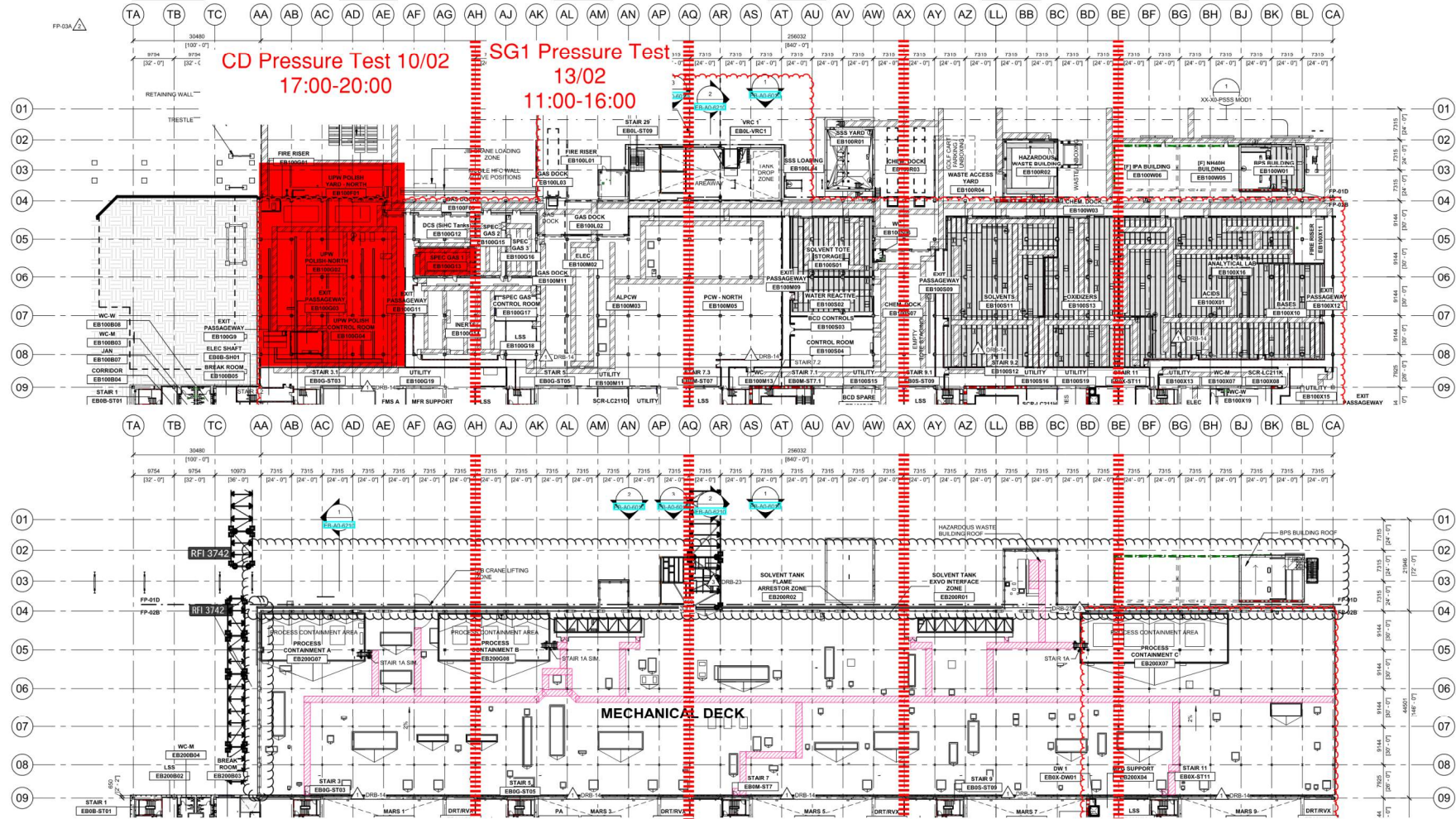
1P

2P

3P

4P

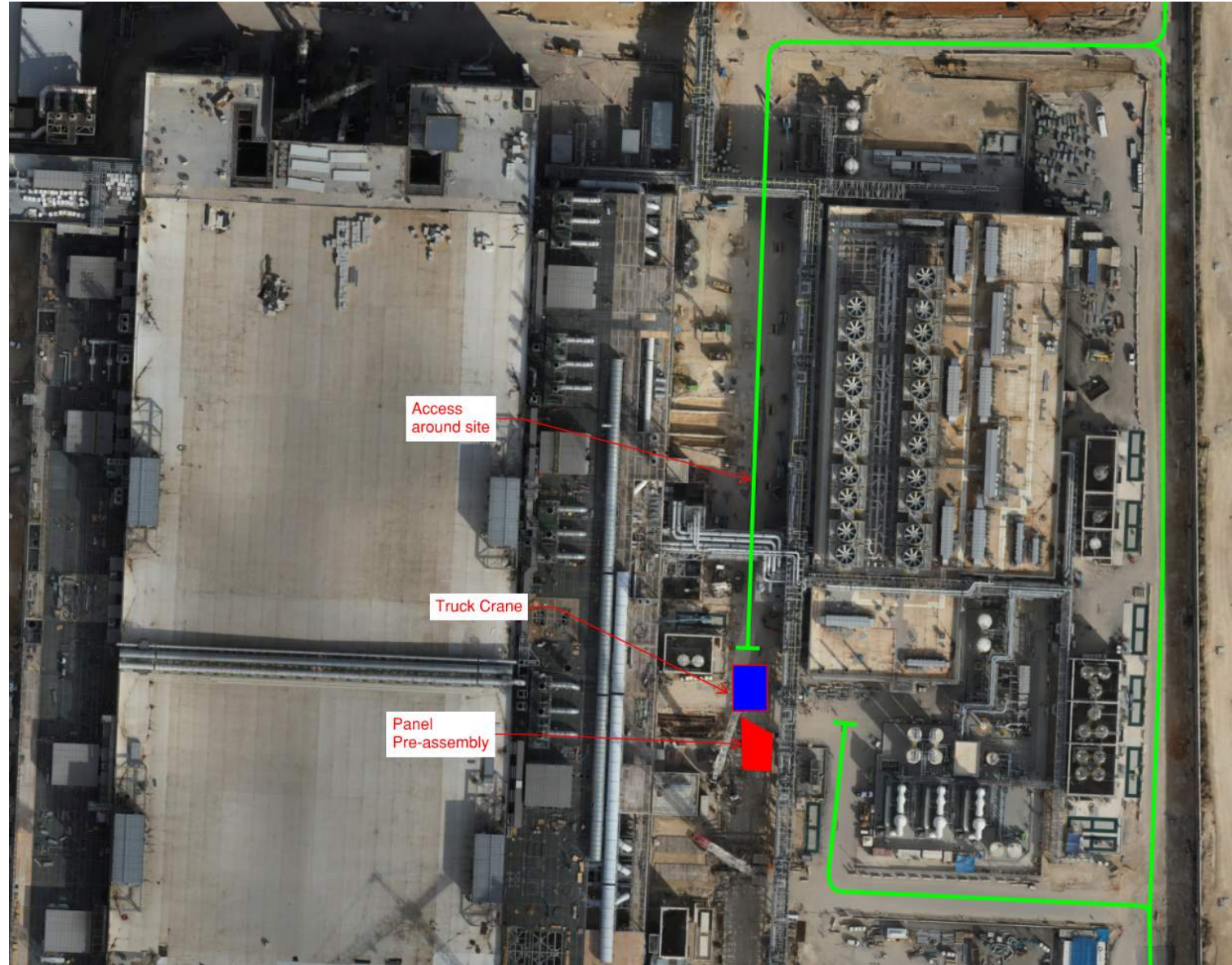
5P



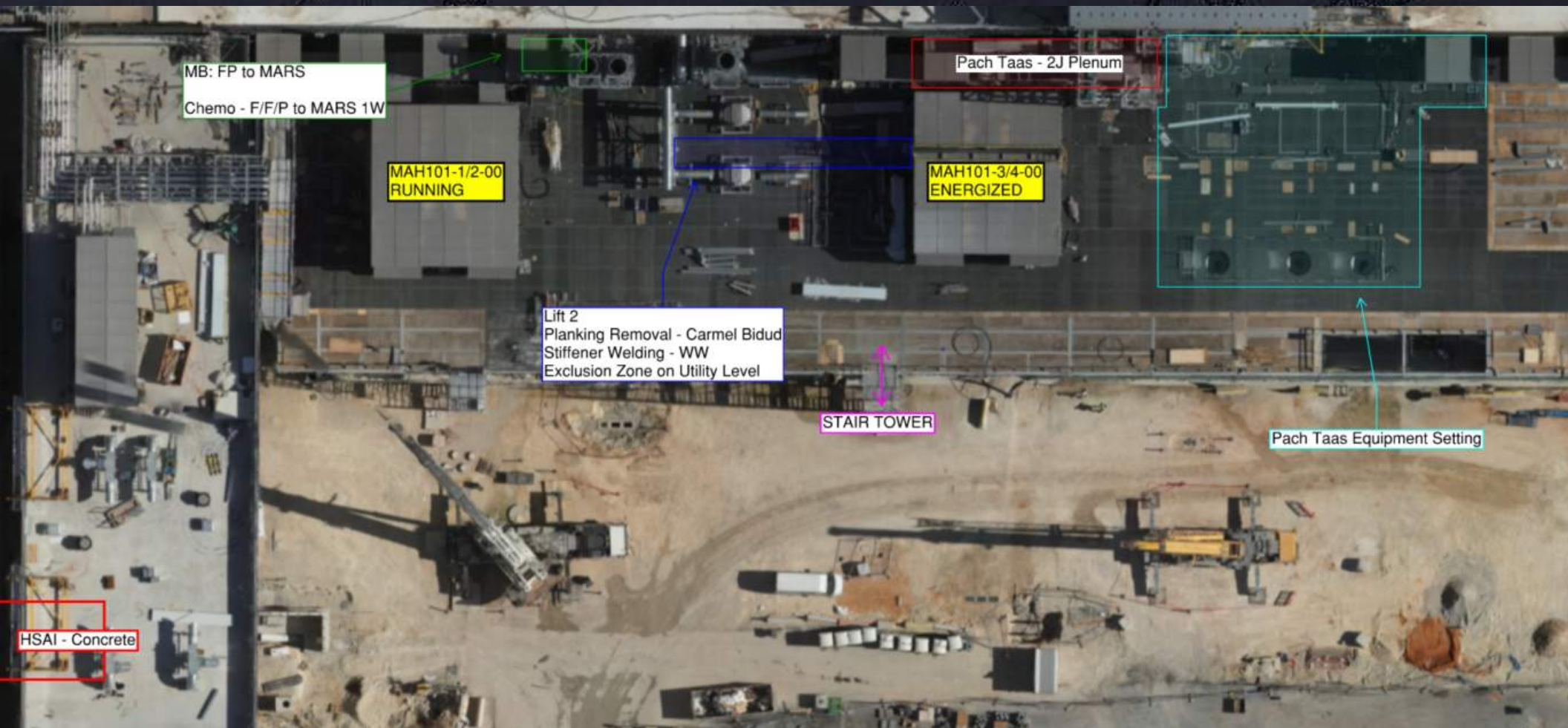
Utility Level
1YA

PSSS Roof
2SA

GUT ROAD
CLOSURE
10/02 @
14:00-18:00

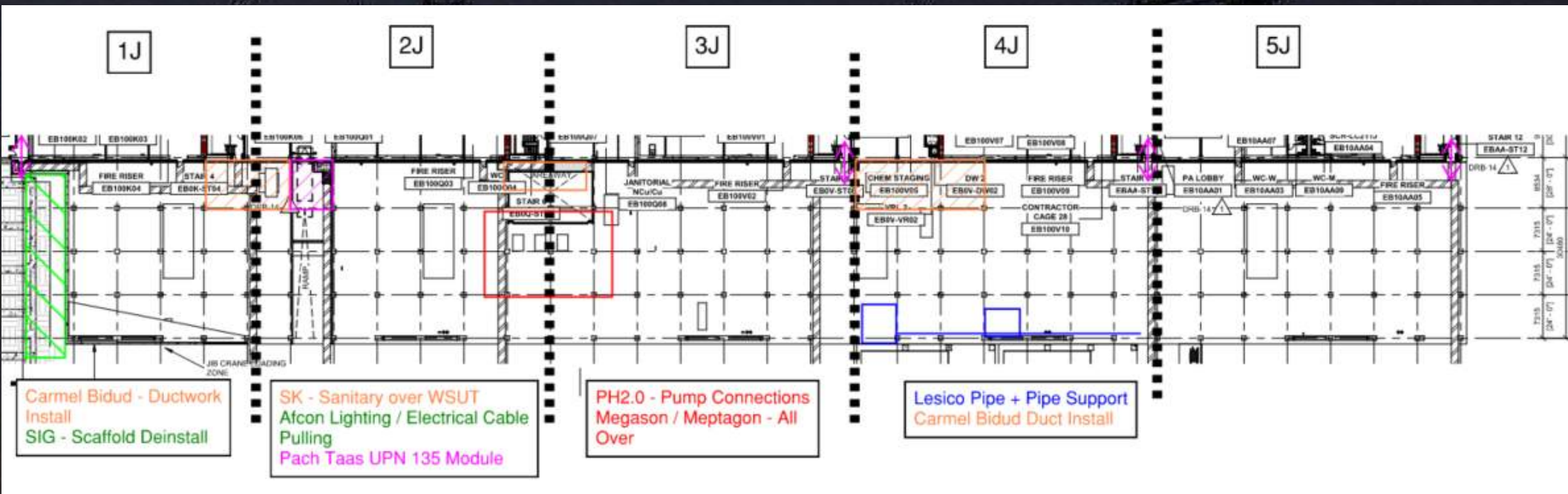


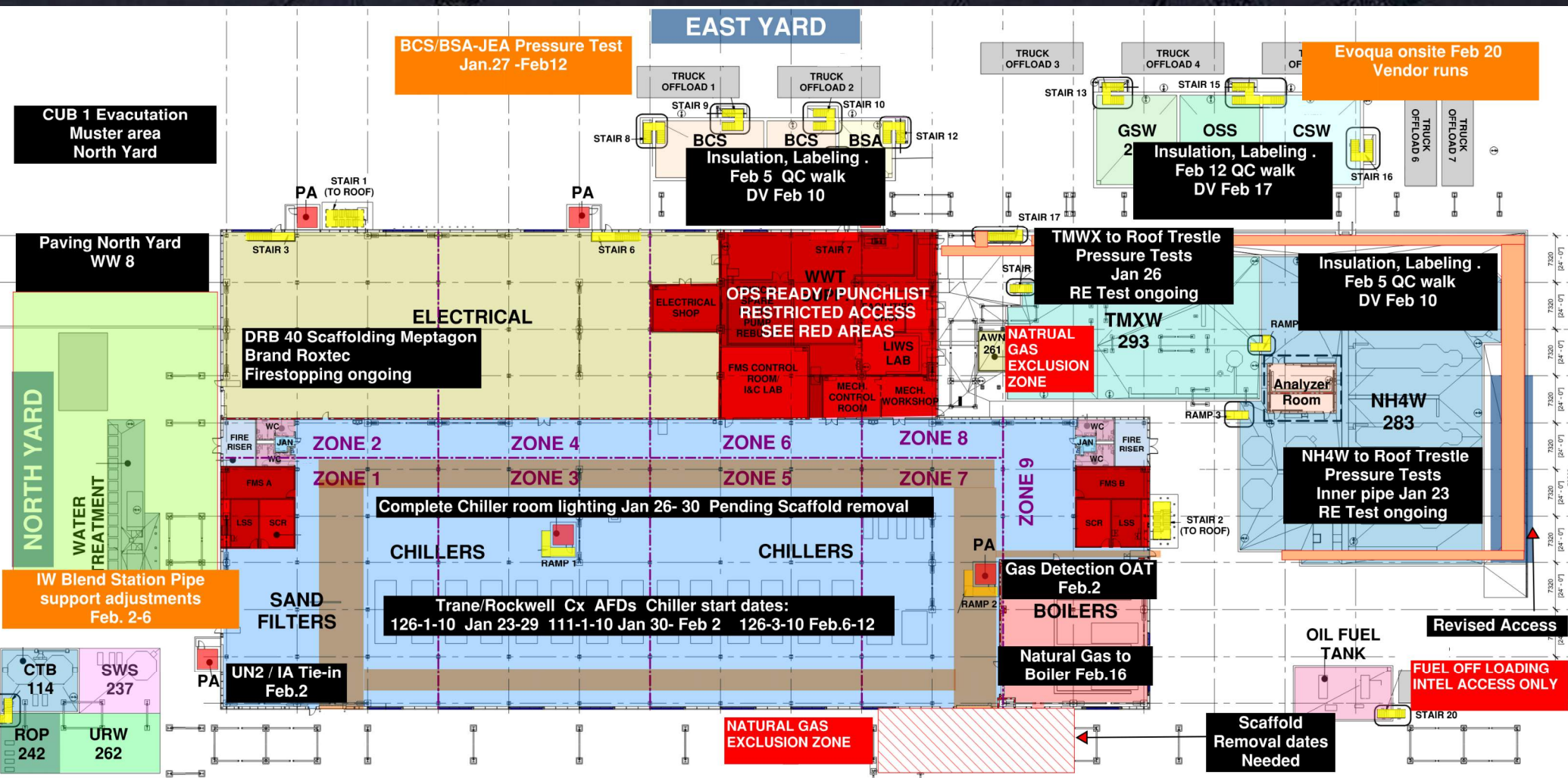
WJG 01J, 02J LIFT 2 & 3



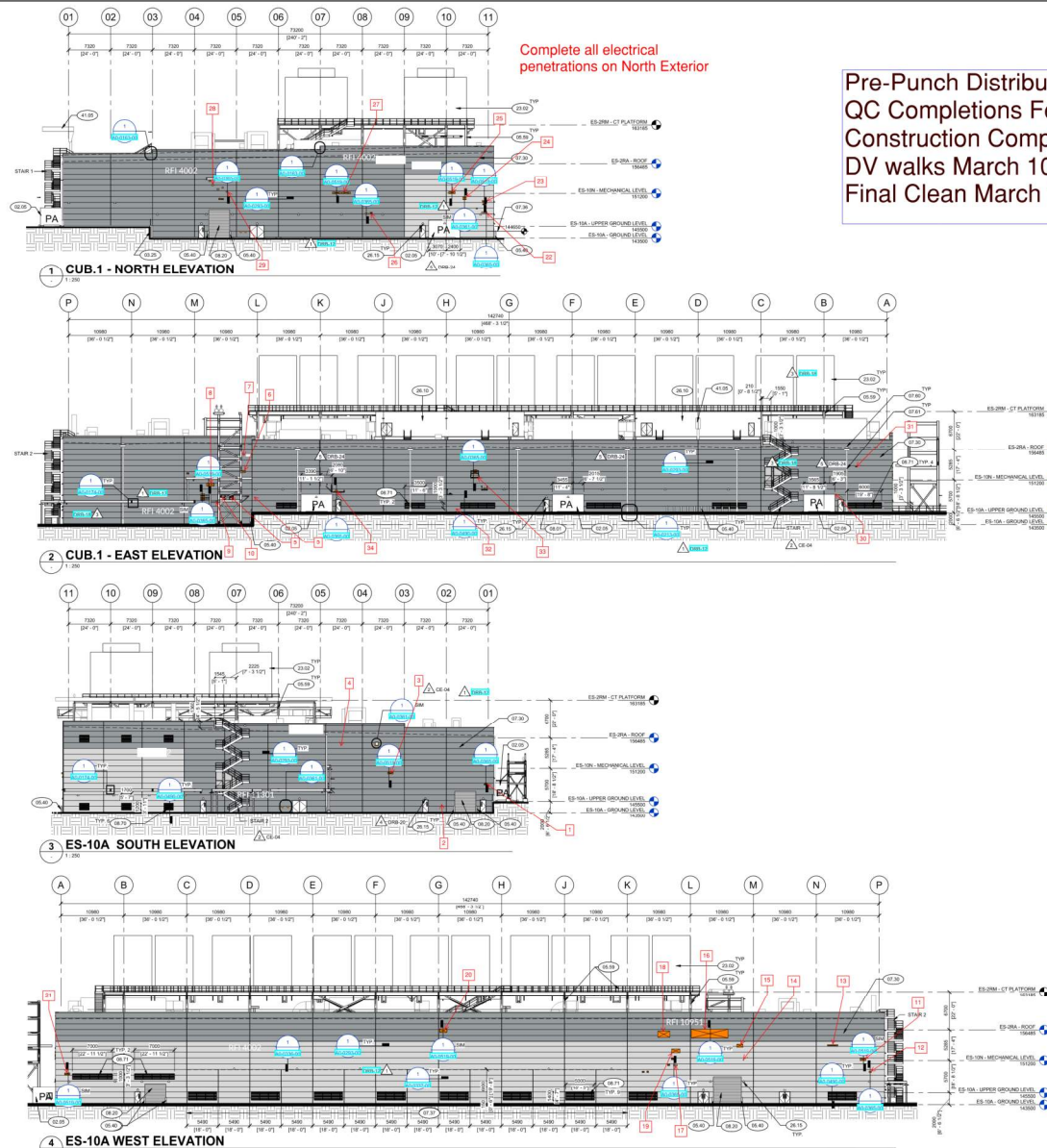
WJG 03J, 04J, 05J LIFT 2 & 3







CUB 1 Exterior Pre-Punch Status



Pre-Punch Distributed Feb 2
QC Completions Feb 9-March 9th
Construction Complete Feb 20
DV walks March 10-11
Final Clean March 12-March 16

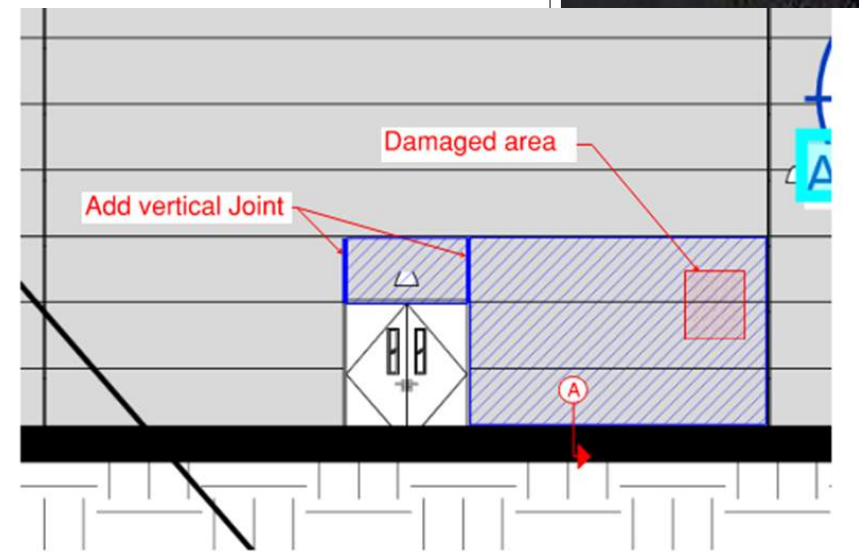
GENERAL NOTES

- A. FOR SYMBOLS AND ABBREVIATIONS, SEE DRAWING SDA-1003.
- B. THE SPECIFICATIONS FOR THE FABRICATION OF STEEL FOR SCOPE NARRATIVE FOR THIS PACKAGE. THE DRAWINGS AND SPECIFICATIONS ARE TO BE TAKEN TOGETHER TO BE THE BASIS FOR THE FABRICATION OF THE STRUCTURE.
- C. REFER TO STRUCTURAL DRAWINGS FOR DESIGN OF LOAD-BEARING FRAMING SYSTEMS, STEEL CHANNELS, COILS, AND OTHER STRUCTURAL MEMBERS.
- D. COORDINATE SEQUENCE OF INSTALLATION OF STRUCTURES/COMPONENTS ADJACENT TO THE BUILDINGS TO ENSURE THE PROPER SEQUENCE OF CONSTRUCTION, WITHOUT NECESSARY NOTCHING/CUTTING PANELS AROUND OBSTRUCTIONS.
- E. COORDINATE FABRICATION OF STEEL MEMBERS WITH OTHER CONSTRUCTION ALLOWED WITHOUT EXCEEDING PENETRATIONS AS COORDINATED. COORDINATE FIRST PROTECTION OF STEEL, THE BACK AND OTHER SUPPORTS NEED NOT BE PROTECTED.
- F. A FIRE RATING IS THE DRAINAGE.
- G. EXPOSED STEEL SURFACES THAT ARE NOT PREFABRICATED OR SCHEDULED TO RECEIVE A PAINT COATING SYSTEM SHALL BE HOT DIPPED GALVANIZED.
- H. REFER TO MECHANICAL DRAWINGS FOR THE TYPE OF HANDLES/FURNISHES AND HANDLERS.
- I. REFER TO ELECTRICAL DRAWINGS FOR VENDOR FURNISHED 4-PHASE STRUCTURES, CABLE TRAYS, AND OTHER ELECTRICAL EQUIPMENT.
- J. SEAL AIR-TIGHT ALL PENETRATIONS THROUGH THE EXTERIOR ENVELOPE. PENETRATIONS THROUGH THE AIR ENVELOPE SHALL BE SEALED AIR-TIGHT WITH MULTIPLE LAYERS OF MEMBRANE.
- K. ADDRESS BUILDING FIRE DATA AND REQUIREMENTS WITH THE FIREPROOFING. REFER TO SPECIFICATION SECTION 05_30_00 FIREPROOFING.

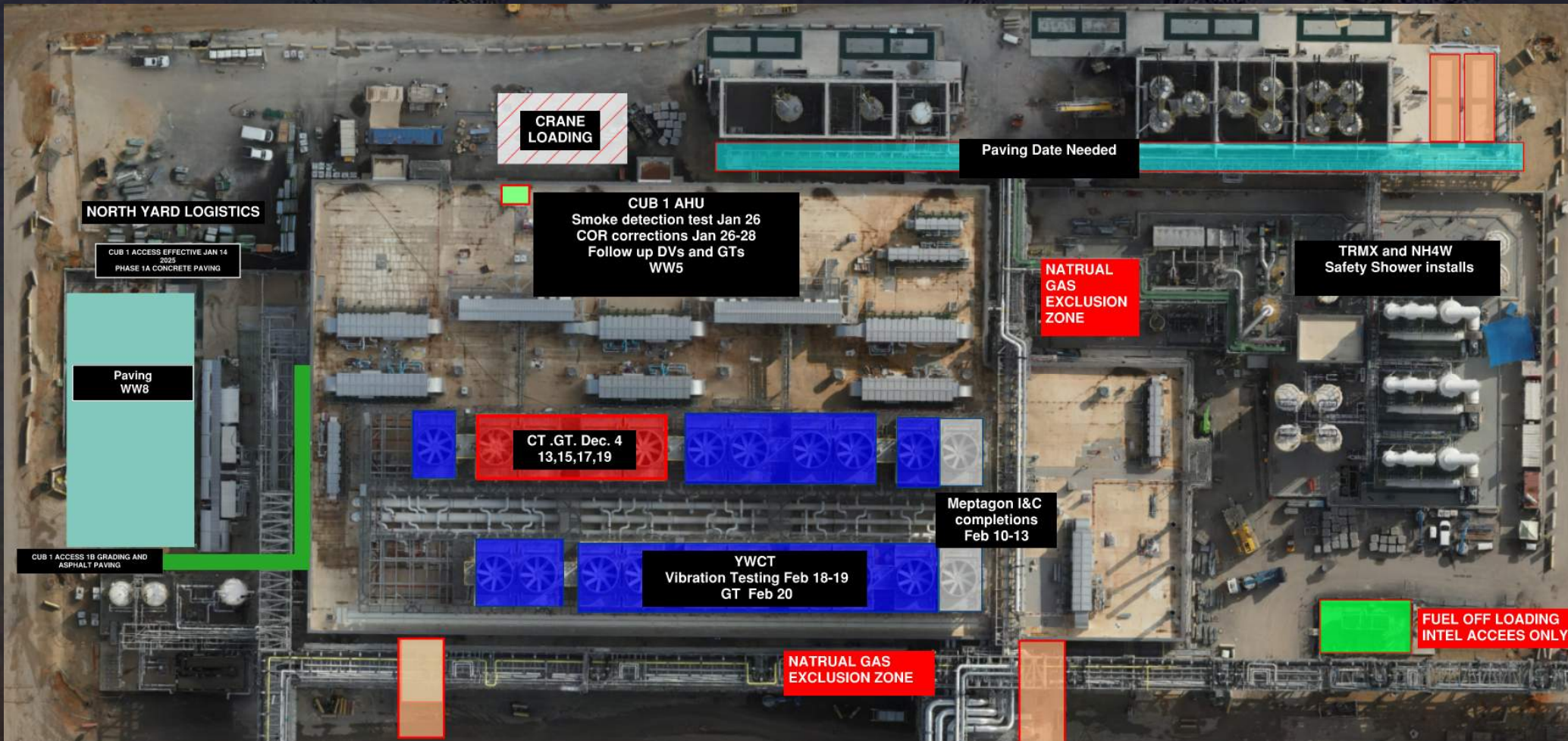
KEYED NOTES:

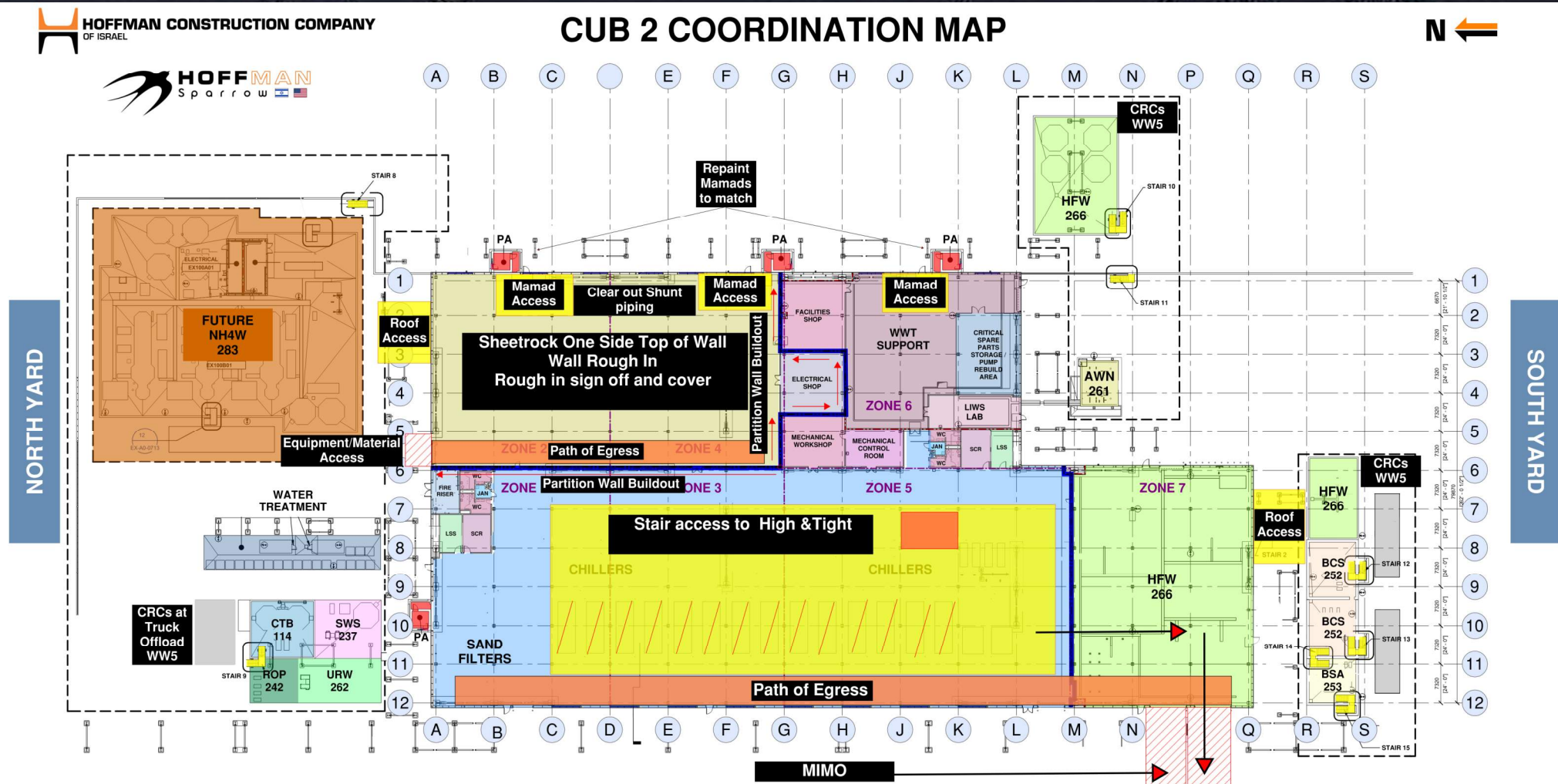
- | | |
|----|--|
| 02 | PRE-ANALYZED CONCRETE PROTECTED AREA ENCLOSED AND PROTECTED BY HOME |
| 03 | FORMING AND CONCRETE PLACEMENT AND FINISHING OF PLACEMENT AND INSTALLATION |
| 04 | WITH ADJACENT ASSEMBLIES AS INDICATED |
| 05 | CONCRETE REINFORCEMENT |
| 06 | ROLL-ON: SEE STRUCTURAL OR CIVIL APP. CORROSION RESISTANT PAVE SYSTEM-12 |
| 07 | RELAY: SEE STRUCTURAL OR CIVIL APP. CORROSION RESISTANT PAVE SYSTEM-12 |
| 08 | NOT COVERED GALVANIZED STEEL WITH CORROSION RESISTANT PAVE SYSTEM-12 |
| 09 | INTERIOR OR EXTERIOR: SEE STRUCTURAL AND SPECIFICATIONS OR 13, 18, 30 |
| 10 | PAINTING AND COATING |
| 11 | COMPOSITE METAL PANEL TYPE C4: MINERAL WOOL CORE, 100MM THK, 18 |
| 12 | SPECIFICATION 47, 18, 30 |
| 13 | GROUNDPOINT FOR COMPOSITE METAL PANEL SYSTEM: LAY OUT CONTRACTOR TO |
| 14 | COORDINATE PANELS TO MATCH PANELS TO MATCH PANELS TO MATCH PANELS TO |
| 15 | PROPERTY TO DETERMINE GROUND, SPACING AND CONNECTIONS WITH PANELS ON |
| 16 | VERTICAL SURFACES |
| 17 | REMOVABLE SECTION OF EXTERIOR WALL CLADDING |
| 18 | SCUPPER AND CONNECTIONS TO SEE SPECIFICATIONS OR 13, 18, 30 |
| 19 | DOWNPOUT TYPE 1, SEE SPECIFICATIONS OR 13, 18, 30 |

1. UN2 Lesico piping complete needed to close penetrations
2. SWS Make up and Temp shower water lines need to be removed from Building openings
3. Boiler room wall repairs Feb 9-19

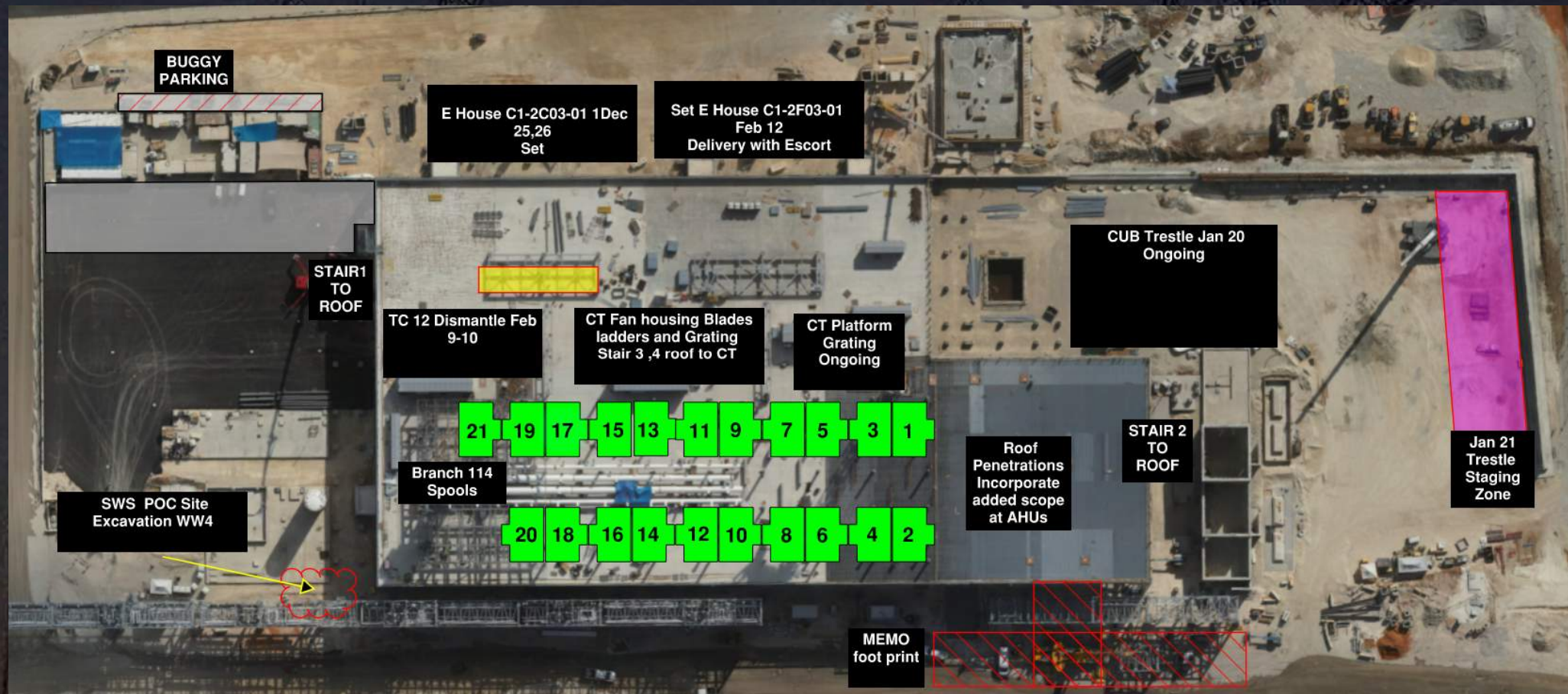


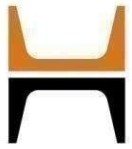
CUB 1 – EXTERIOR/ROOF



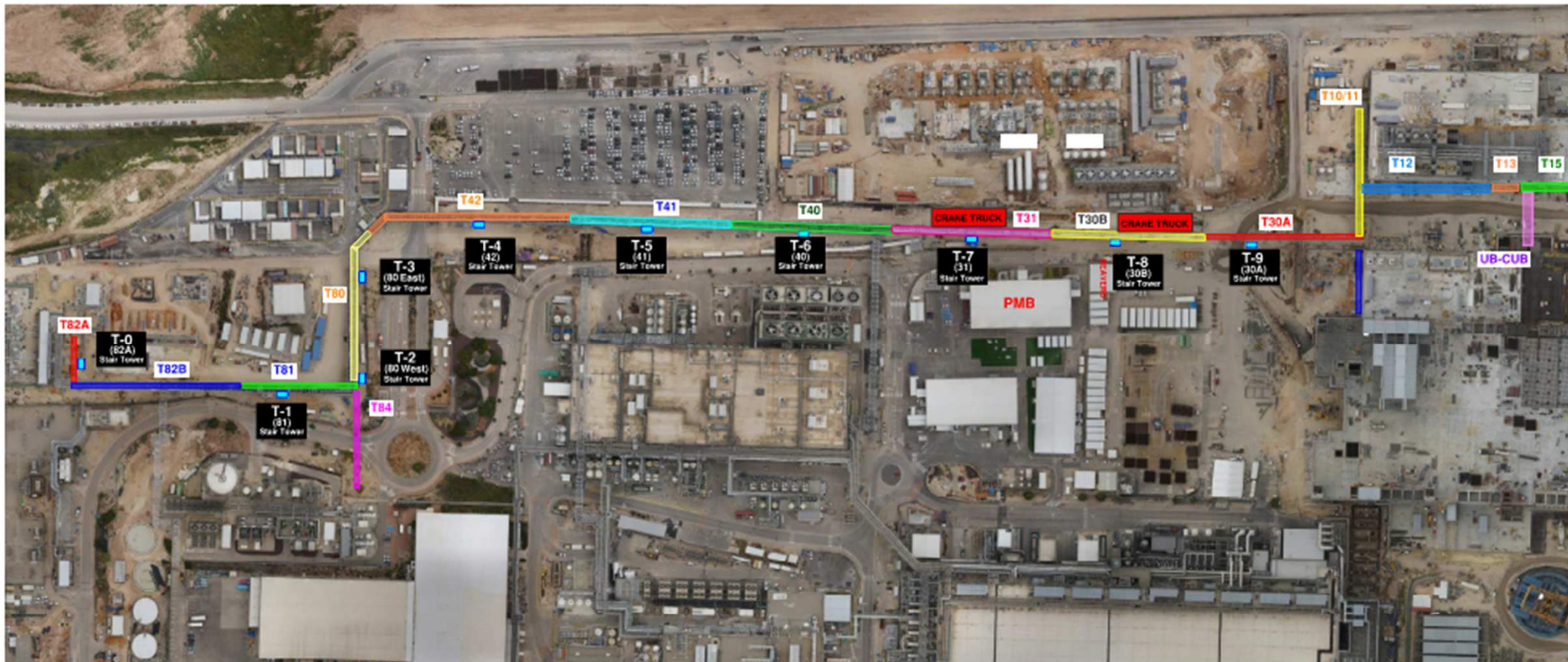


CUB 2 – EXTERIOR/ROOF





HOFFMAN CONSTRUCTION COMPANY





HOFFMAN CONSTRUCTION COMPANY



Daily Coordination Meeting

Site Logistics

North Entry





Daily Coordination Meeting

Site Logistics North

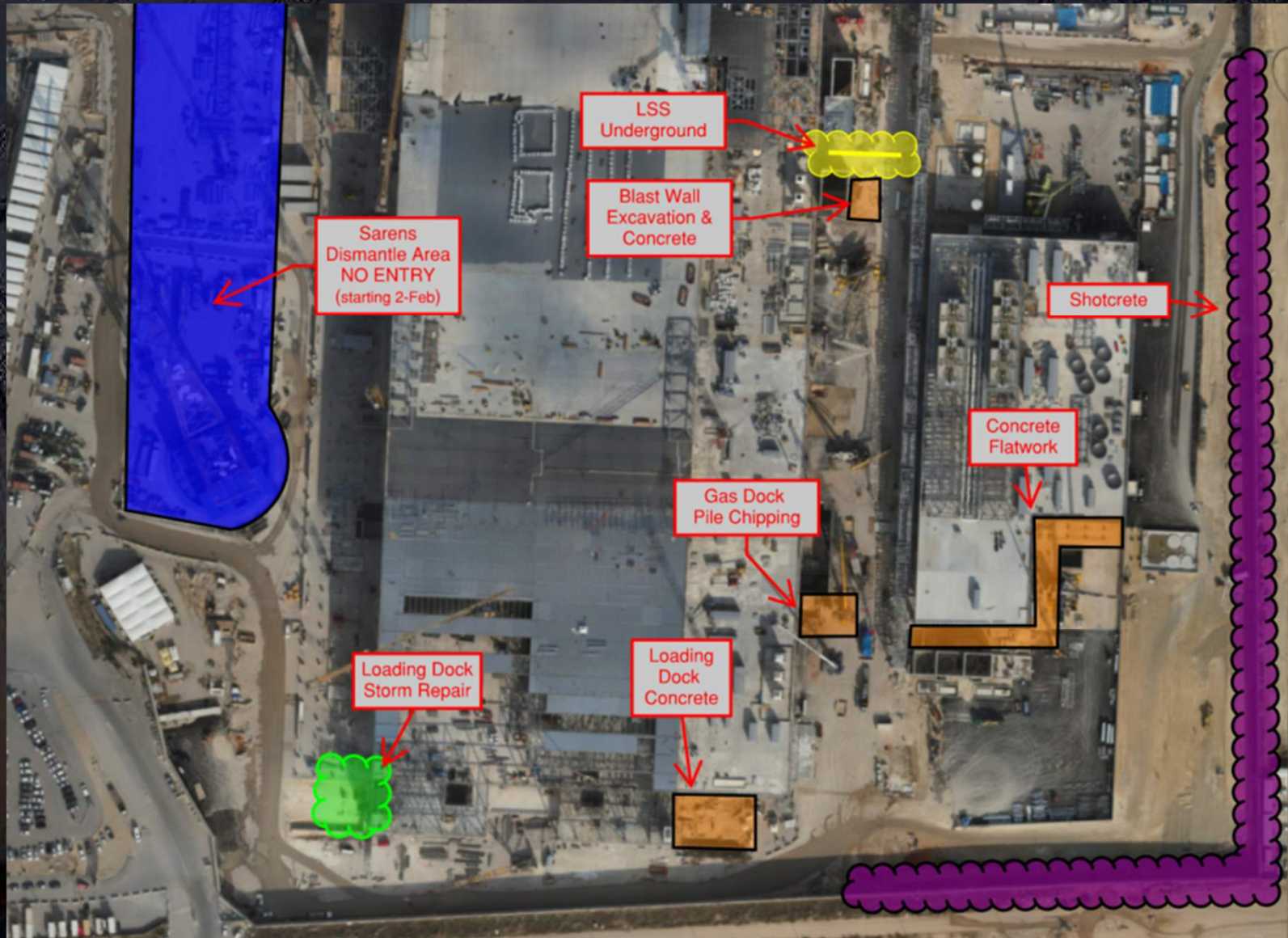


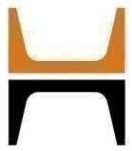


Daily Coordination Meeting

Site Logistics

South

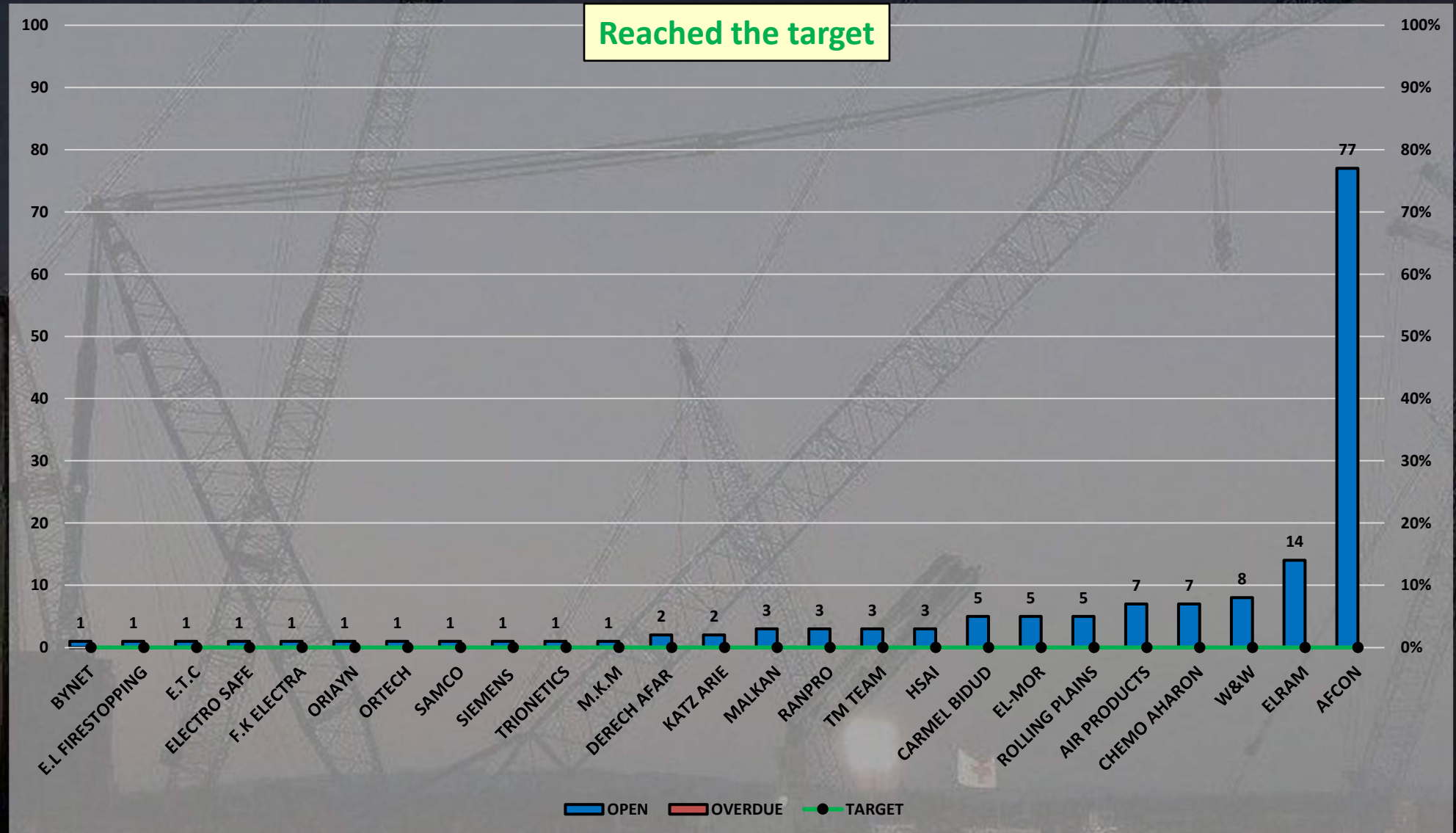


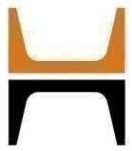


Overdue/Open CORs By Subcontractor WW7 (5% Target)

Open – 649 CORs

Overdue – 170 CORs

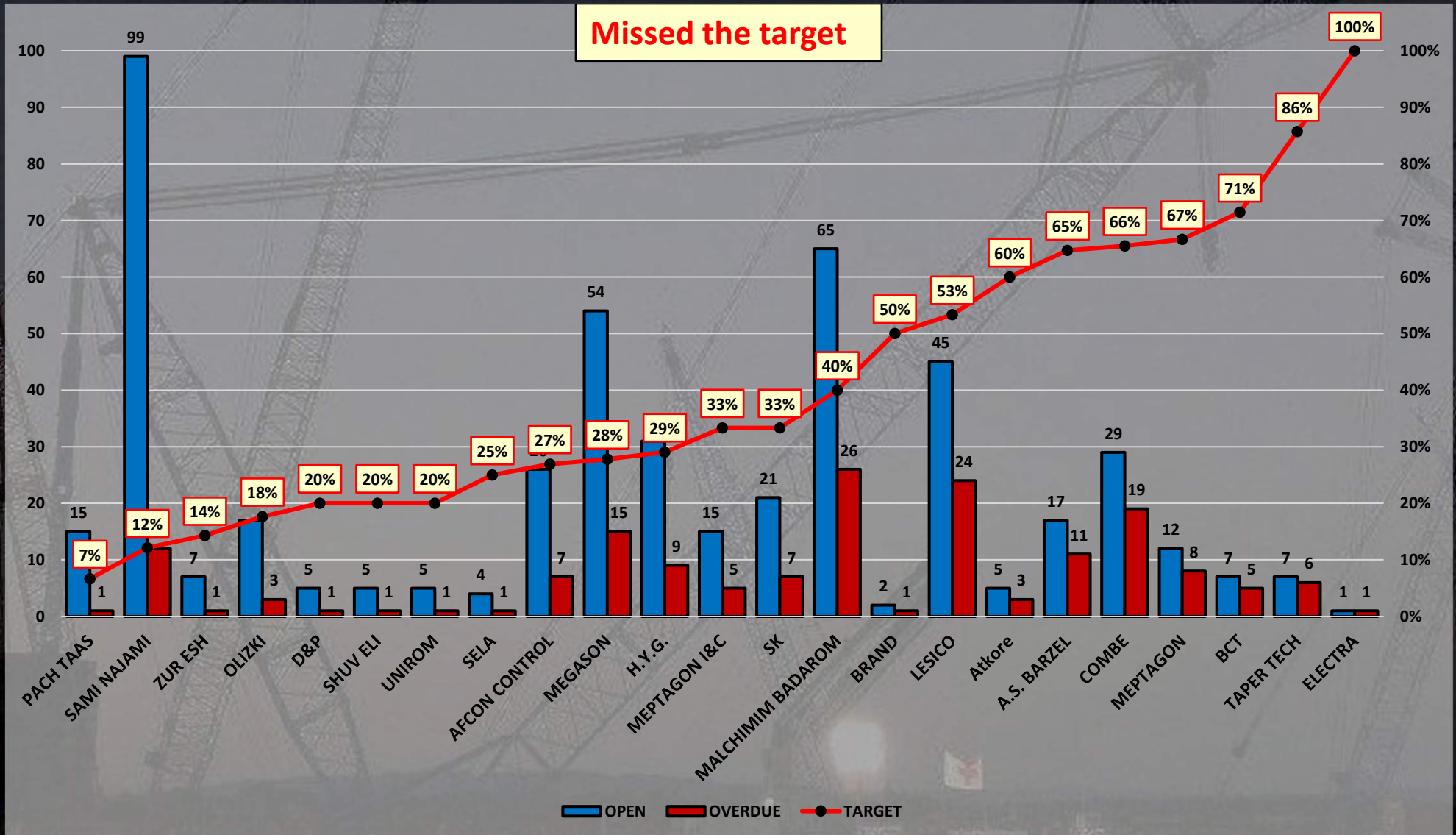




Overdue/Open CORs By Subcontractor WW7 (5% Target)

Open – 649 CORs

Overdue – 170 CORs



Slips, Trips, Falls

- Seeing an increase in people being injured from slips, trips, and falls. There are some basics that we need to brush up on to help prevent injuries:
 - Use designated walkways, if there is not a designated walkway, alert HCC.
 - Know what your feet are stepping on, do not use phone while walking.
 - Remove boot covers when leaving clean room space
 - Remove tripping hazards, do not just step over/on them.
 - Do not run.
 - Use handrails on stairs.

Daily Coordination Meeting



14:00 Sign In