

Daily Coordination Meeting

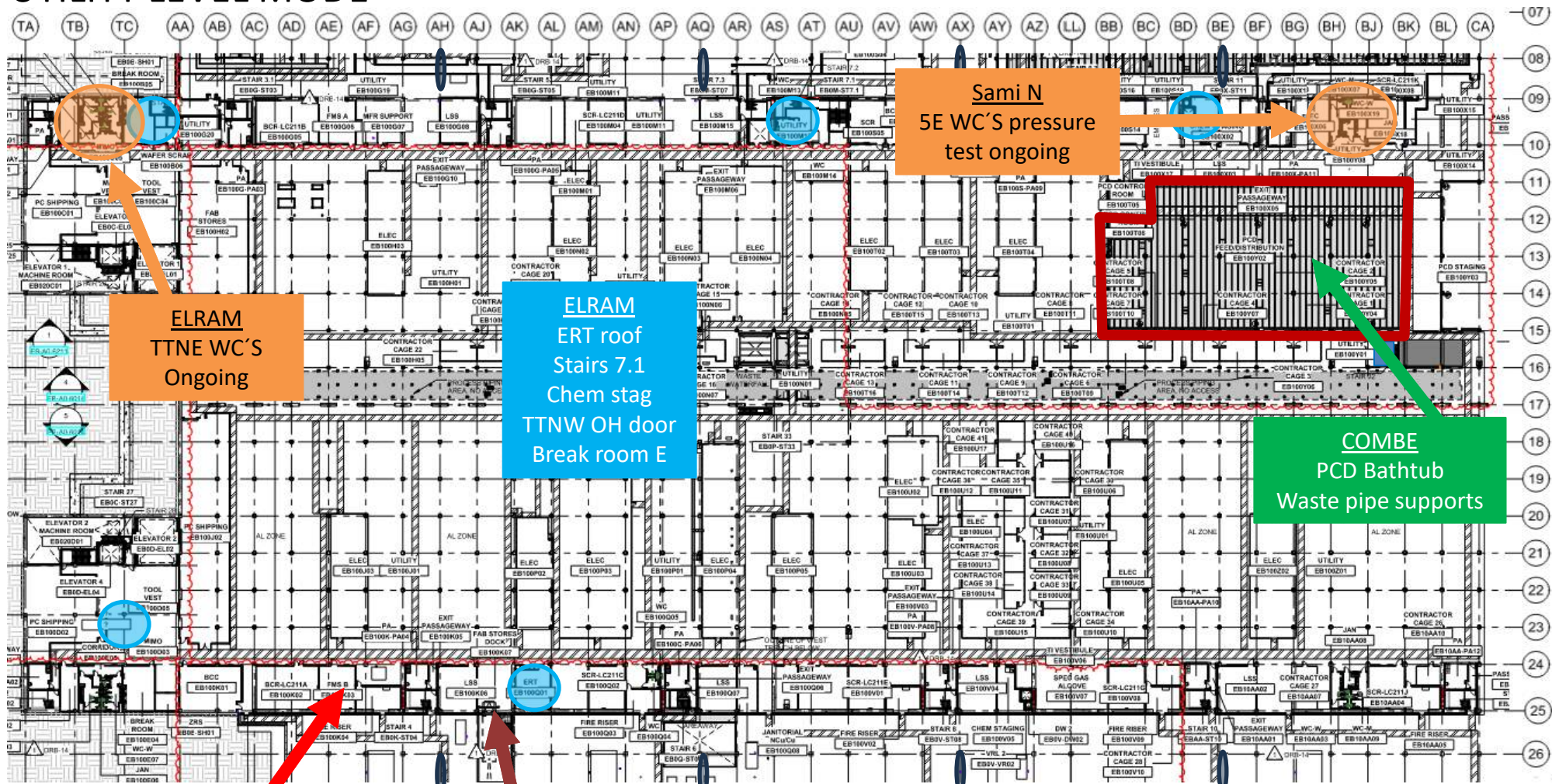


Daily Coordination Meeting

General Topics:

- Interstitial stop work – another dropped object
- Meeting attendance

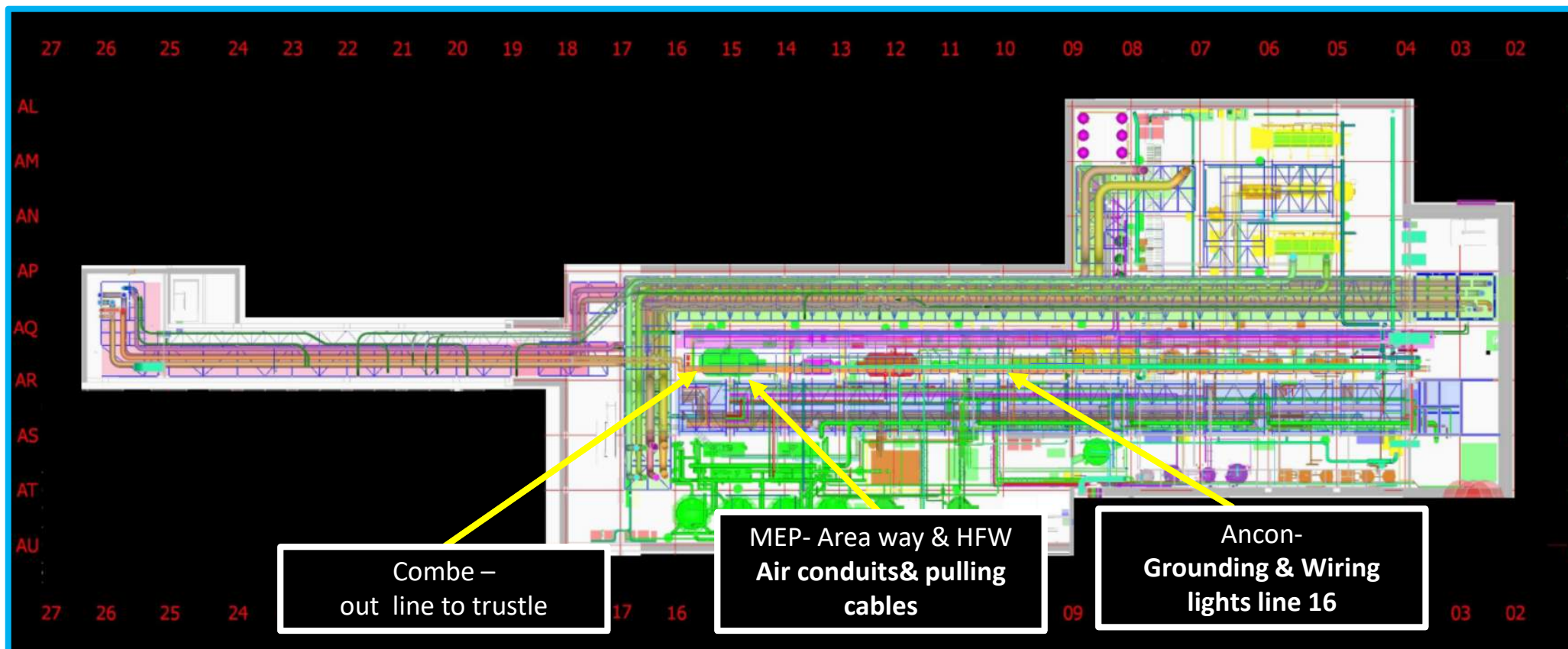
UTILITY LEVEL MOD1



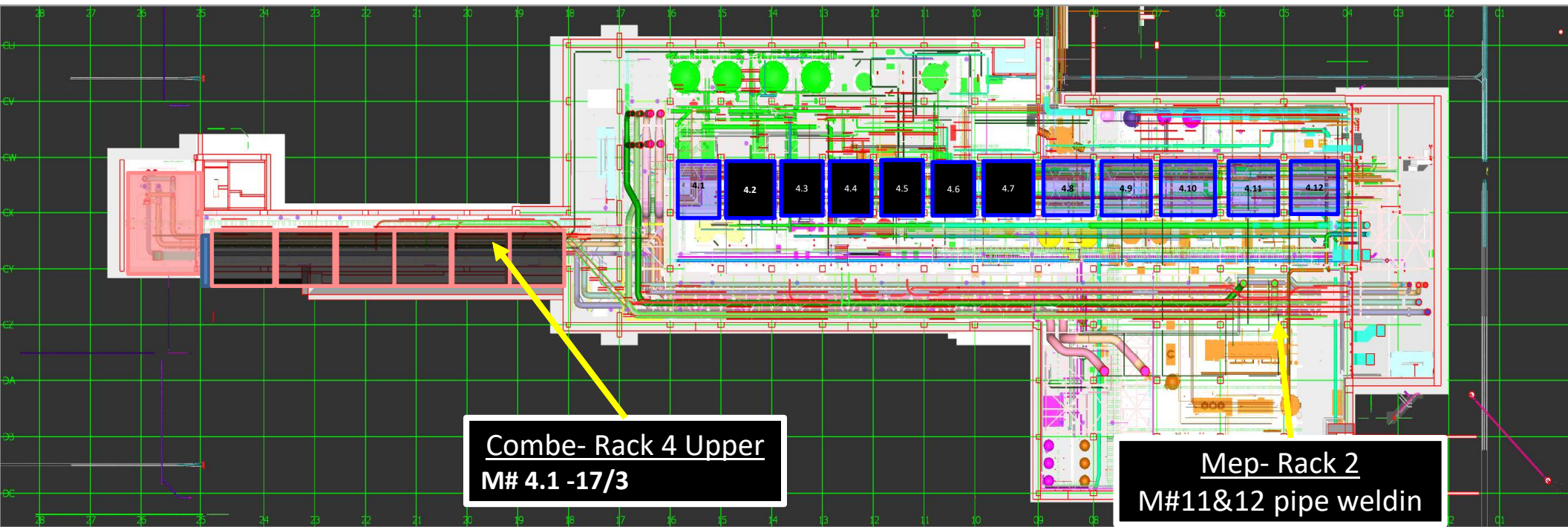
HYG
FMS B
3/18
Carmel back
3/23

SHEARIM
Need start
date !?

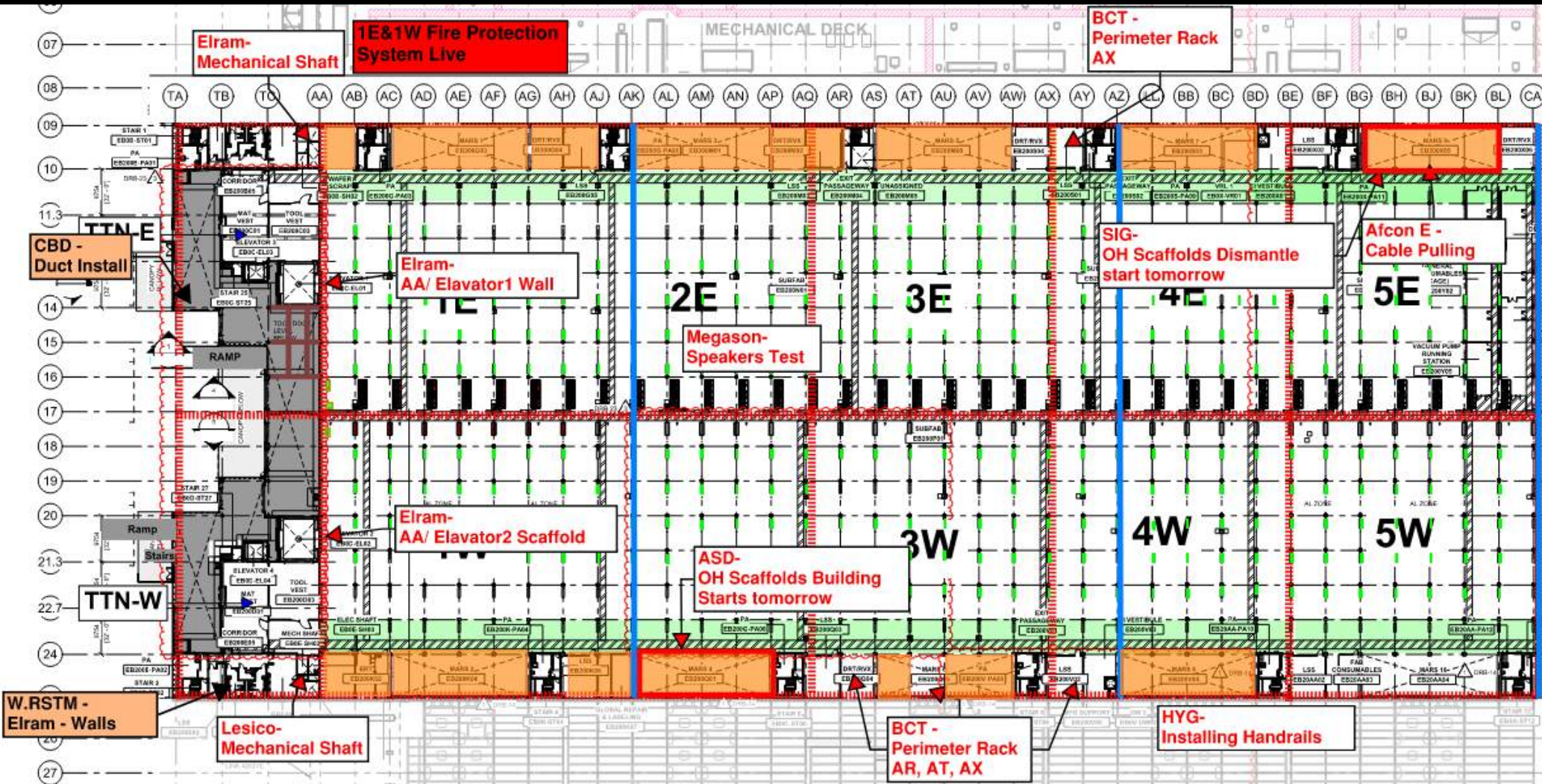
SUT 38.1 LEVEL

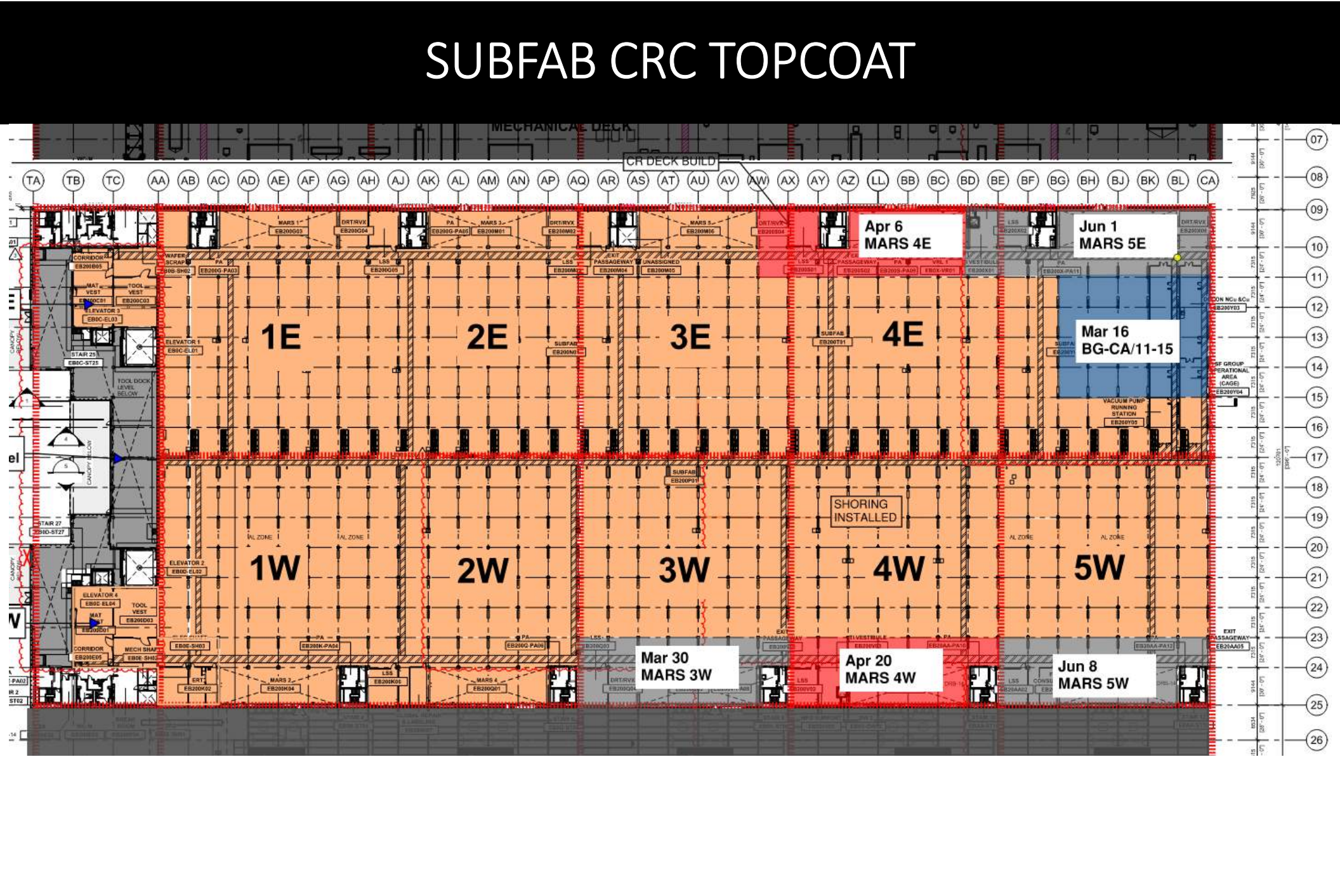


SUT 38.2 LEVEL

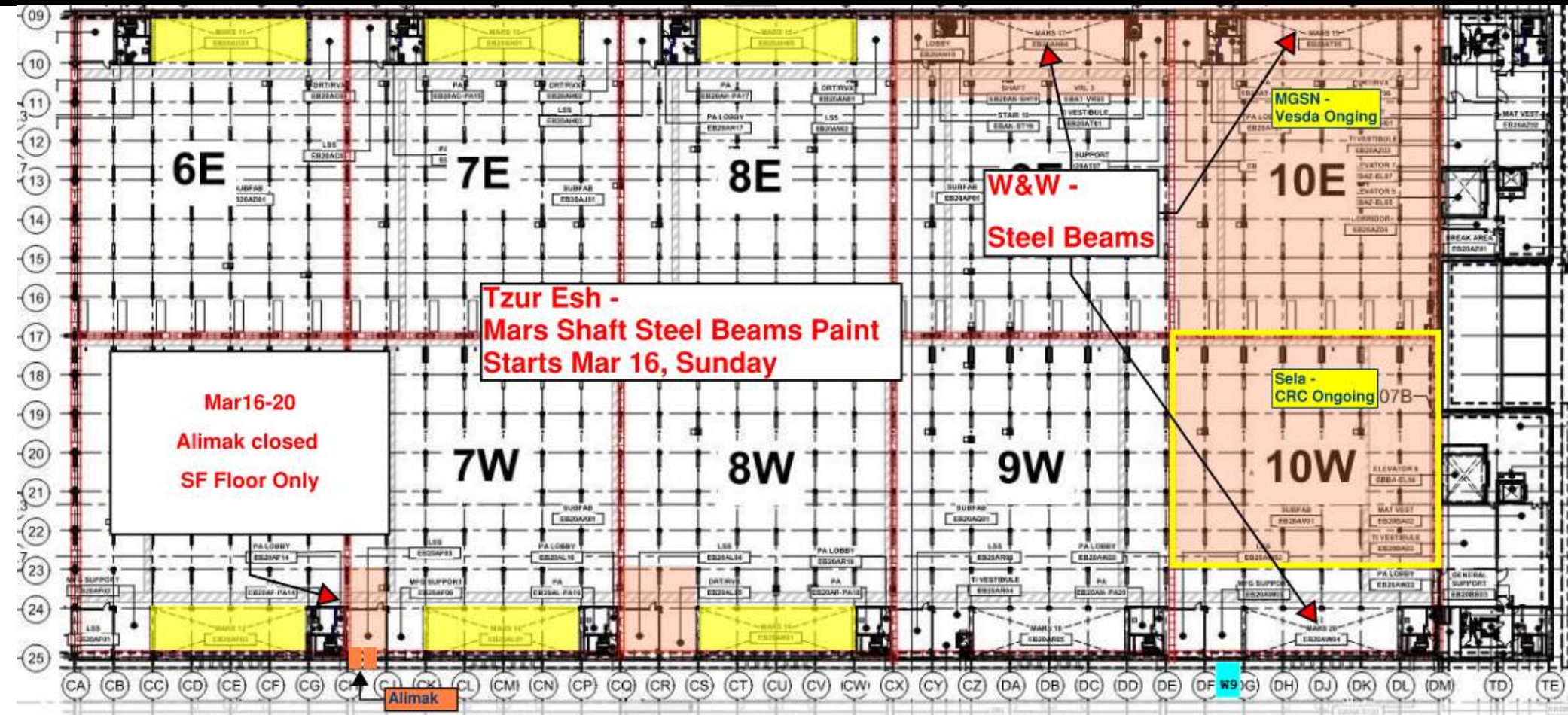


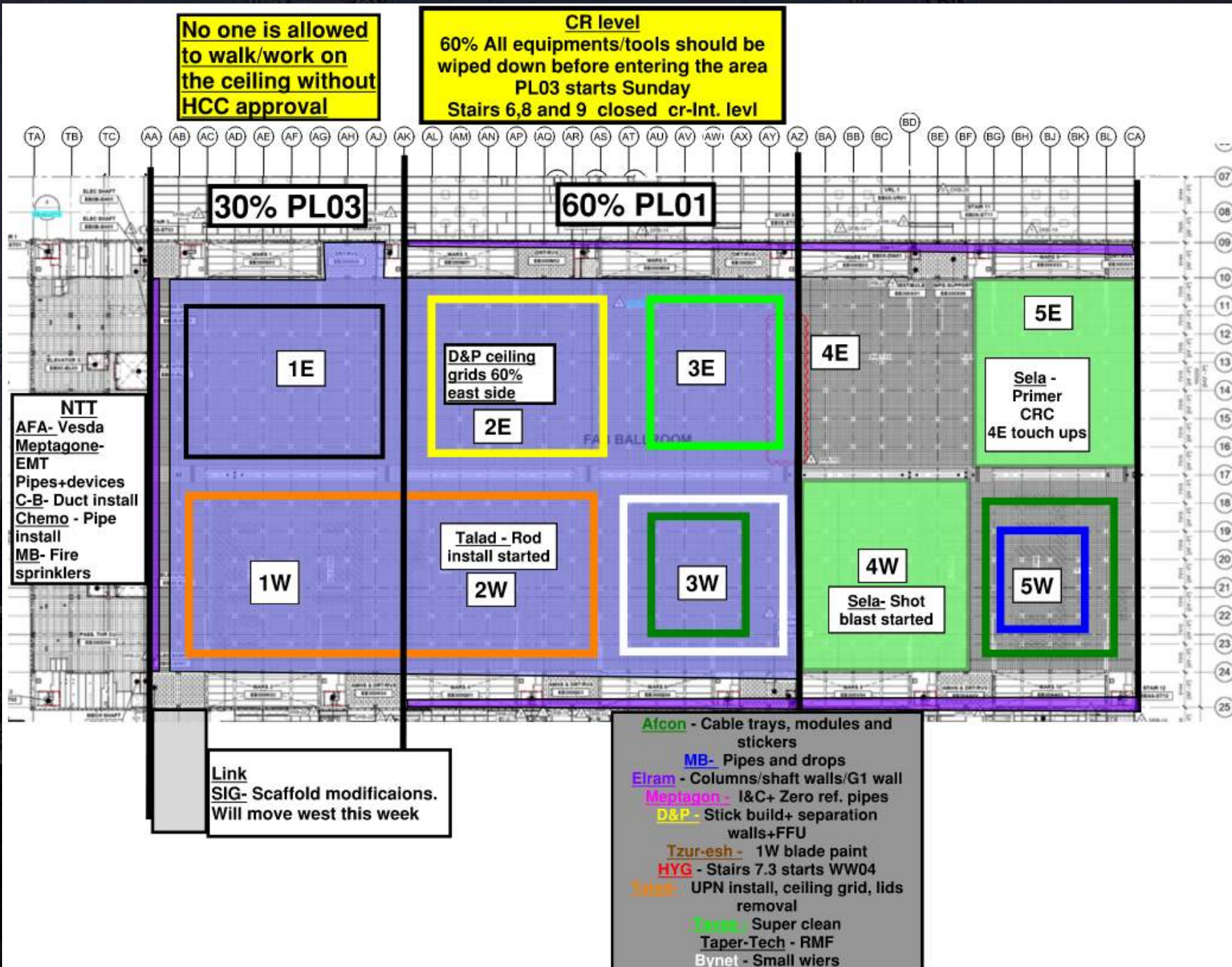
SUBFAB BUILDOUT MOD 1

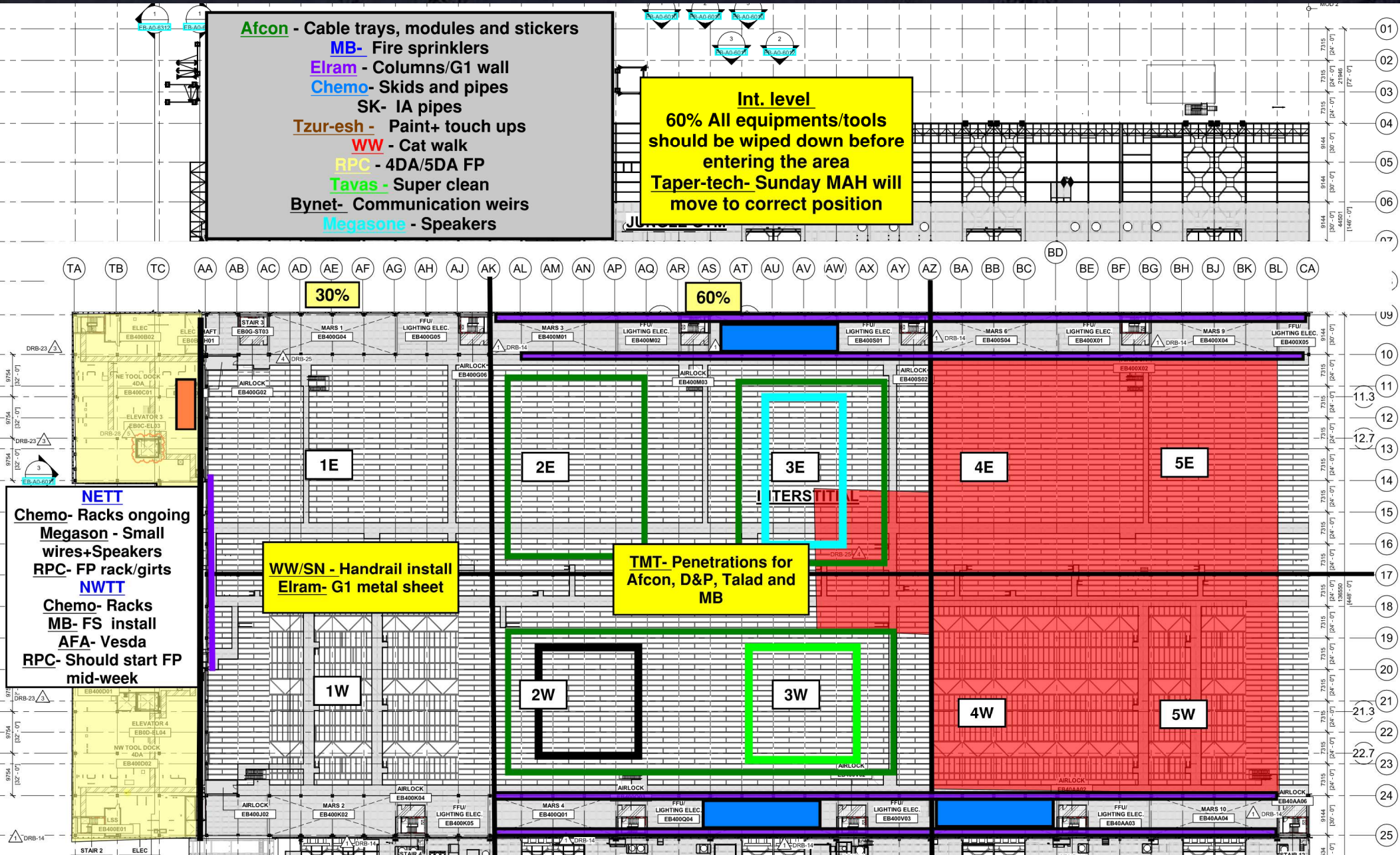


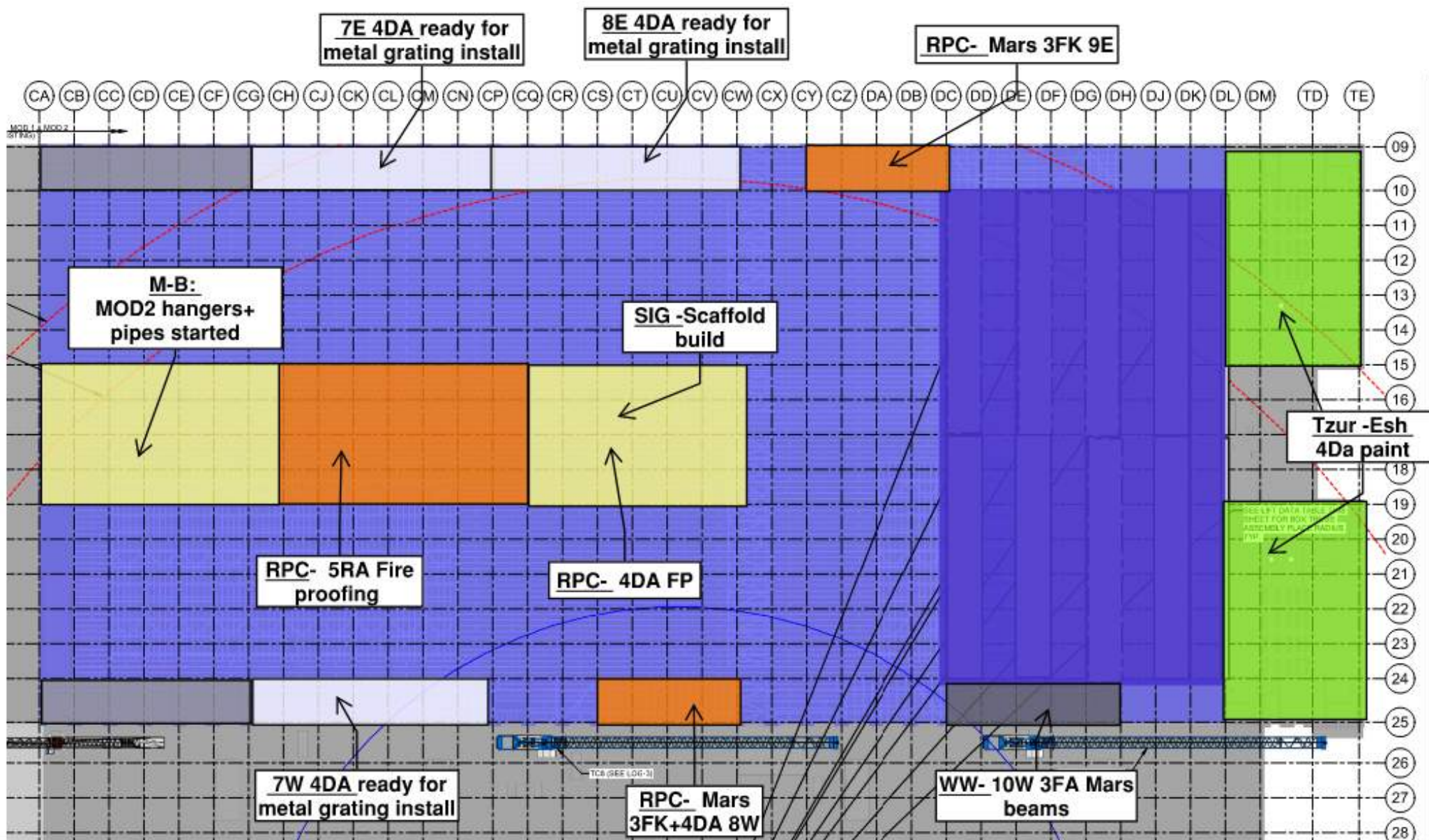


SUBFAB BUILDOUT MOD 2







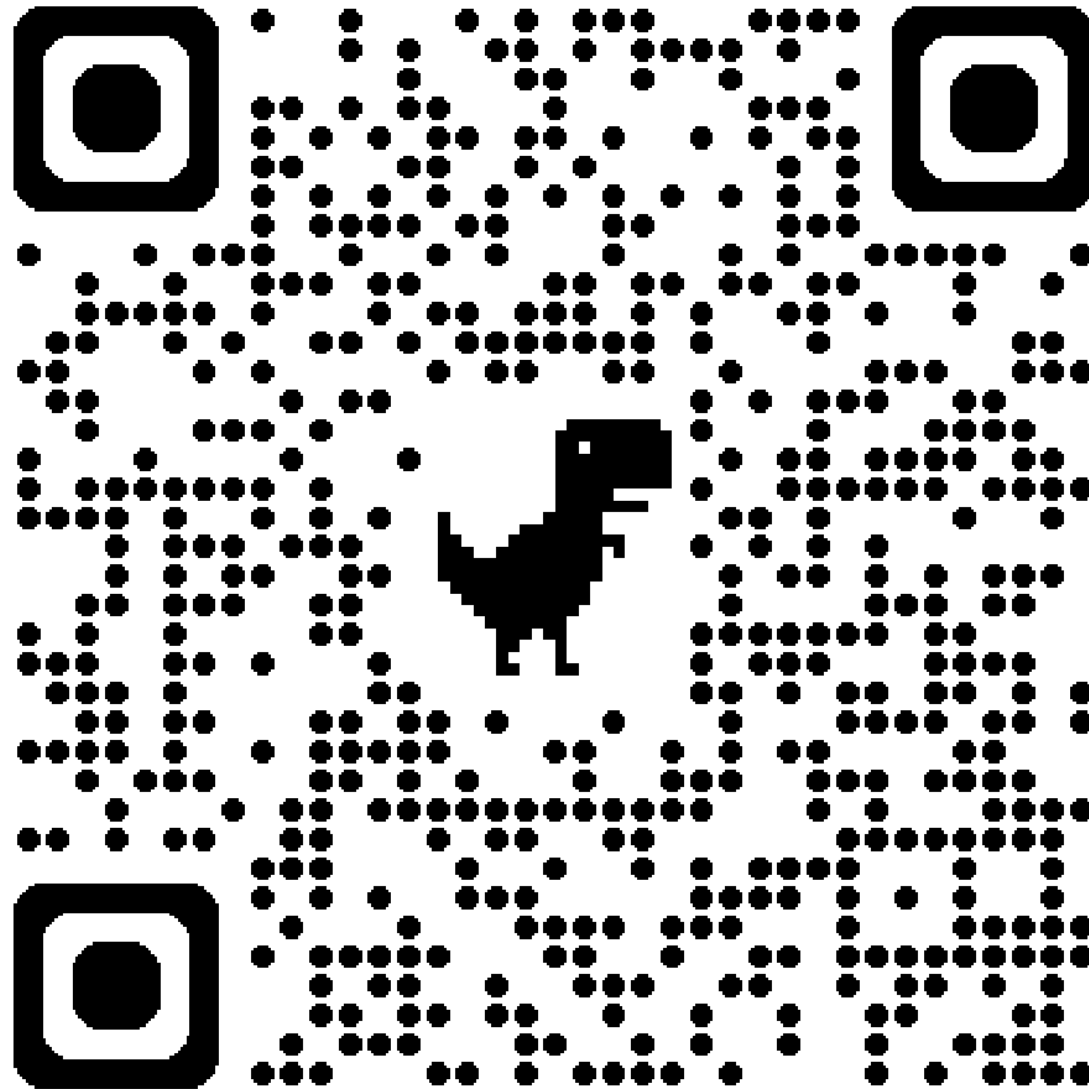




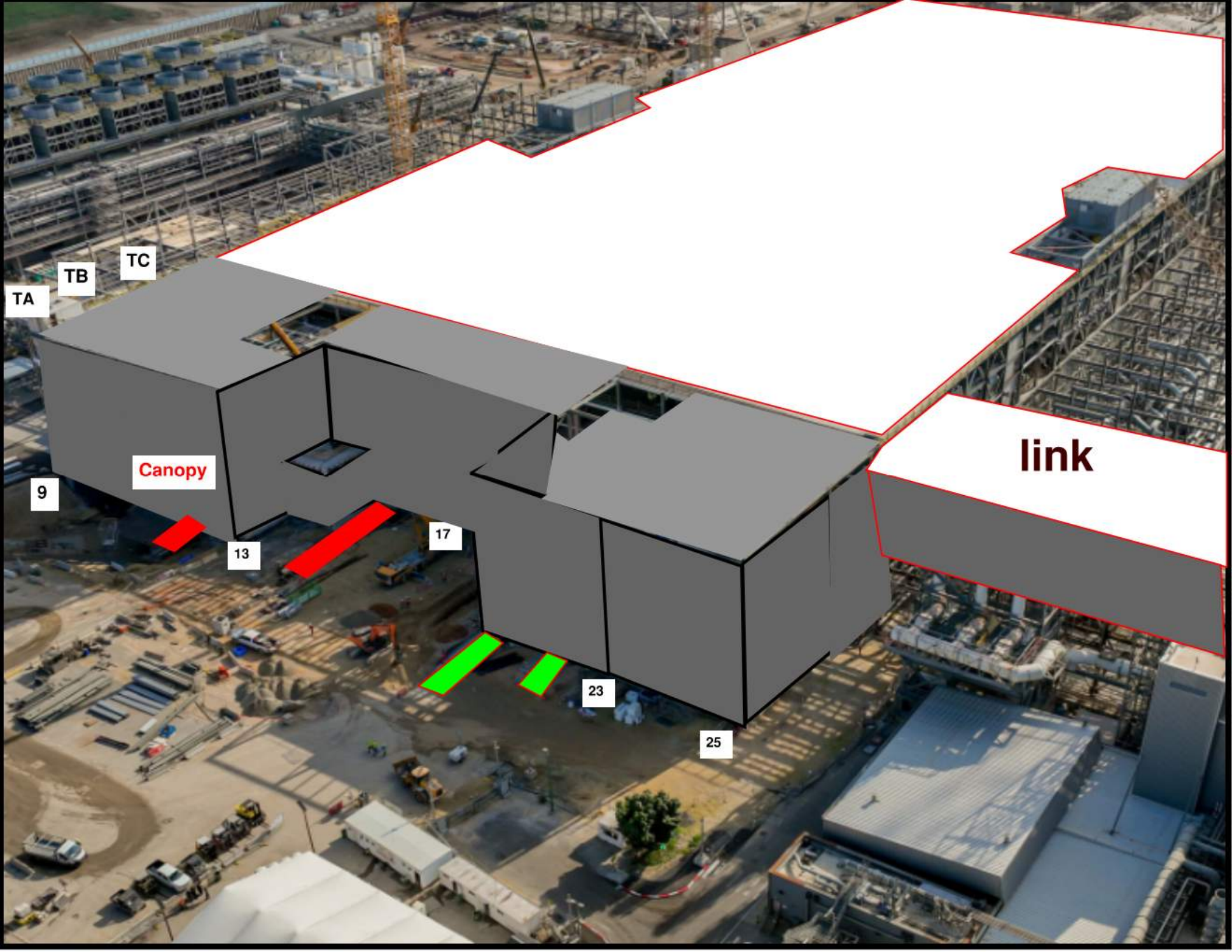
HOFFMAN CONSTRUCTION COMPANY



Siding Penetration Request Form



Subcontractor must fill out and submit all required cells in order to get a penetration cut through the siding.



TA

TB

TC

Canopy

link

9

13

17

23

25



MOD 2 EASTSIDE GIRTS/SIDING

2752/ 2751	2742/ 2741	2732/ 2731	2722/ 2721	2712/ 2711	2552/ 2551	2542/ 2541	2532/ 2531	2522/ 2521	2512/ 2511	2502/ 2501

READY FOR GIRTS	
INSTALLING GIRTS	
READY FOR PANELS	
PANELS INSTALLED	

MOD 2 WESTSIDE GIRTS/SIDING

READY FOR GIRTS 

INSTALLING GIRTS 

READY FOR PANELS 

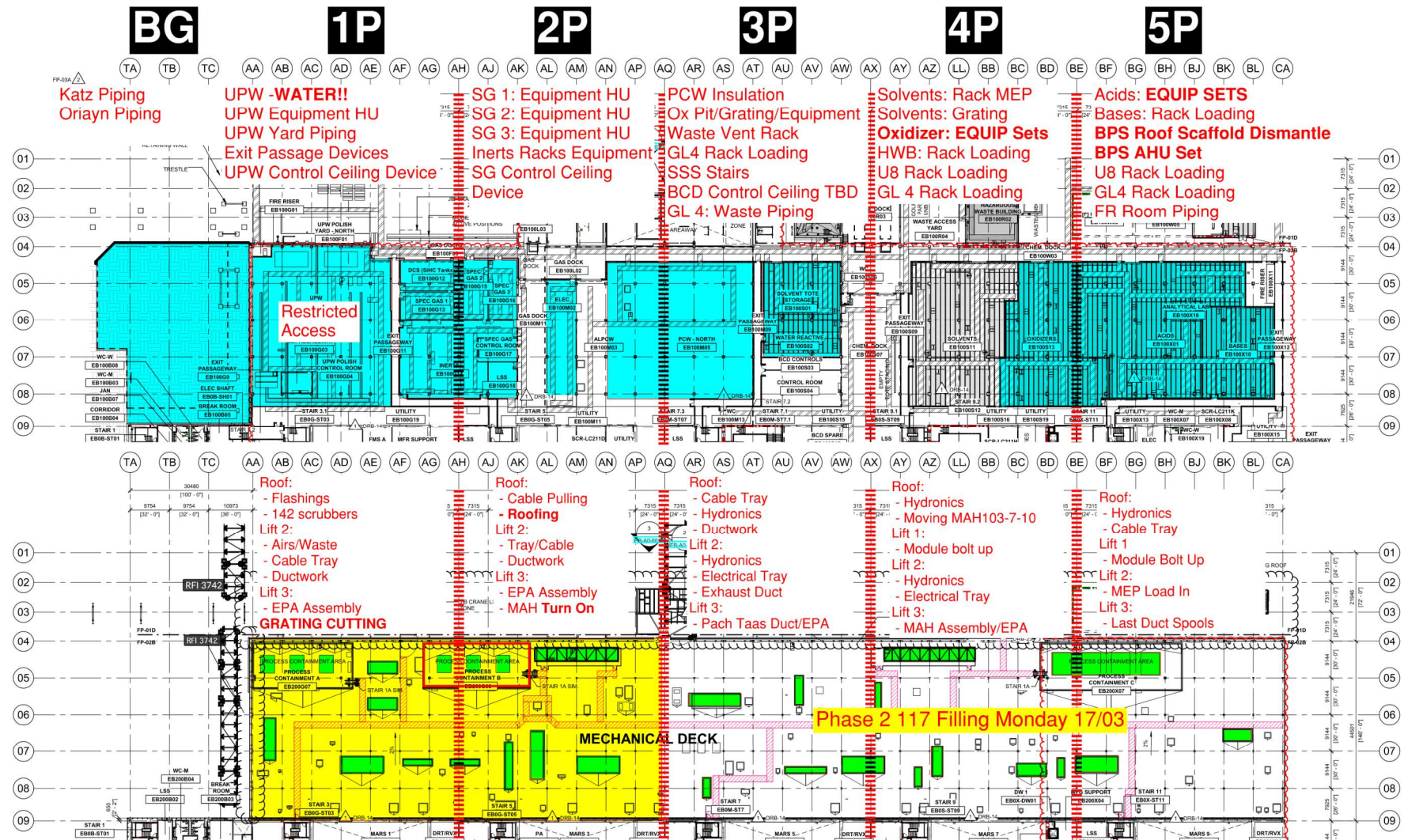
PANELS INSTALLED 



PSSS.1

Utility Level 1YA

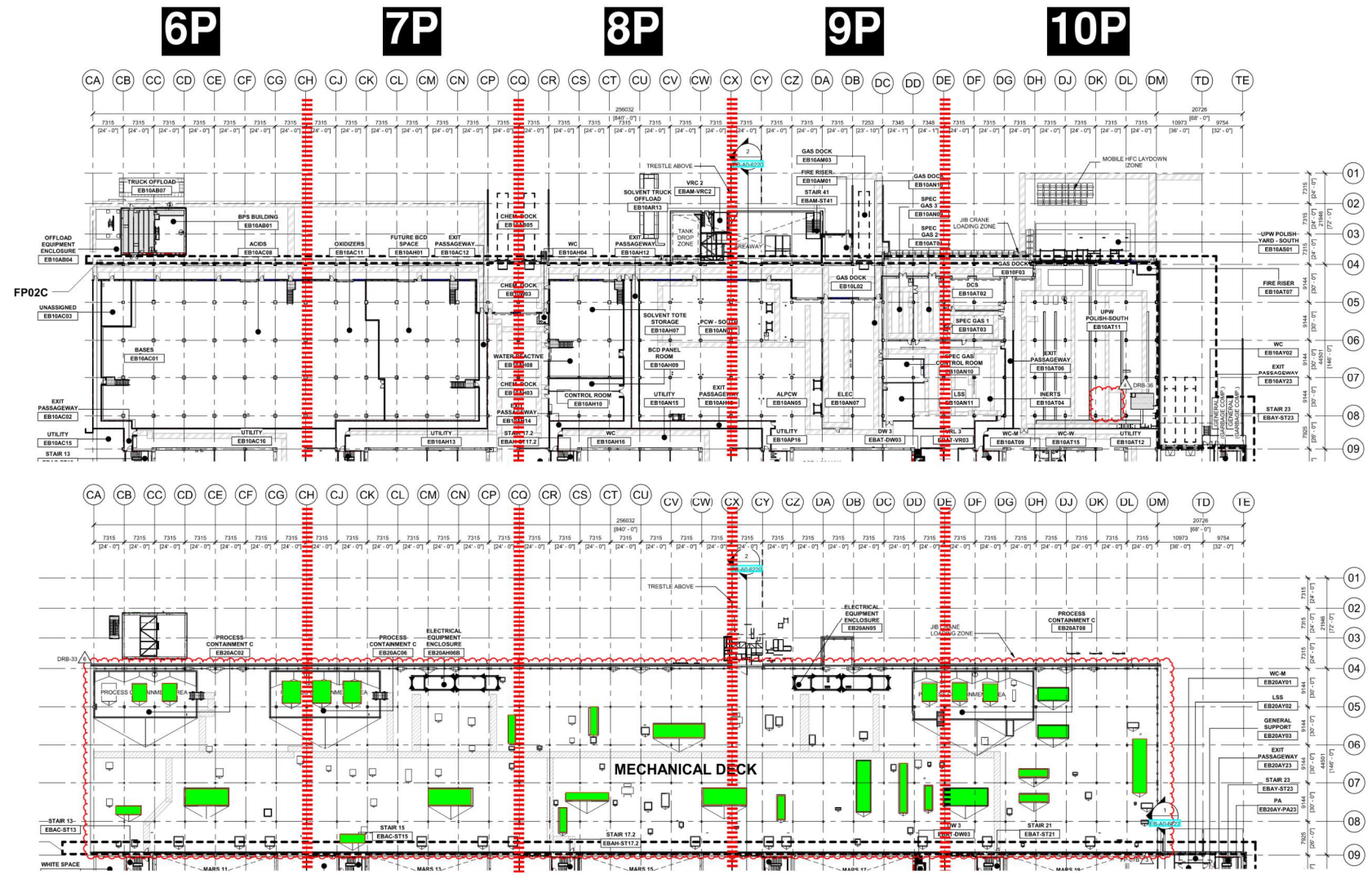
PSSS Roof 2SA



PSSS.2

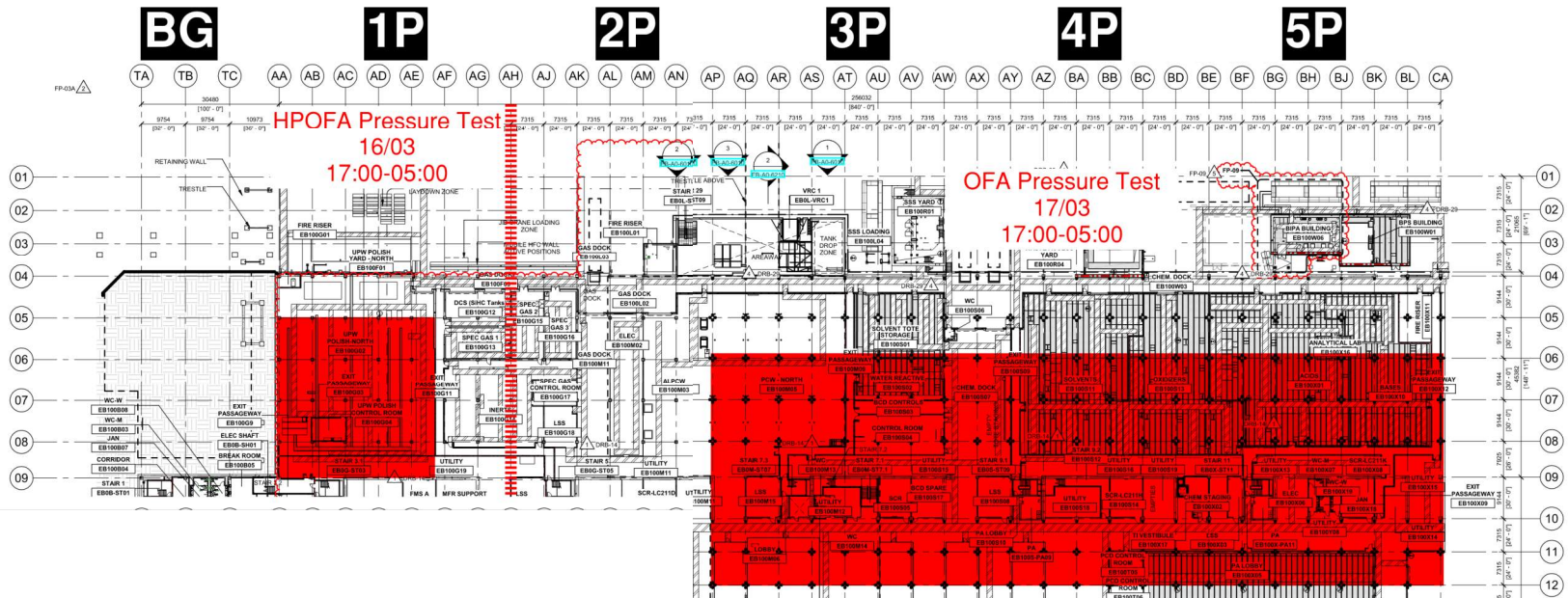
Utility Level
1YA

PSSS Roof
2SA

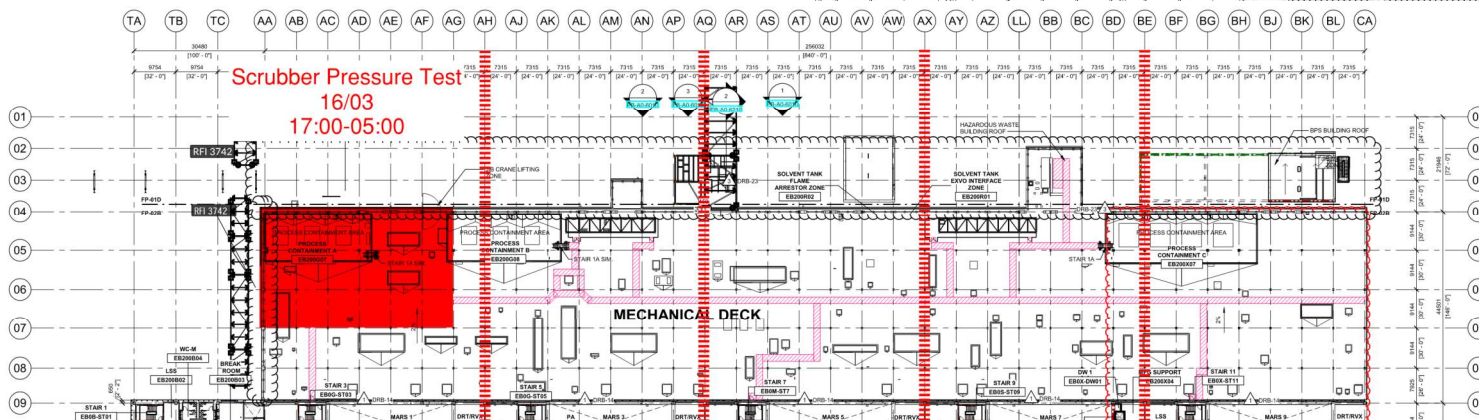


PSSS Pressure Testing

Utility Level
1YA



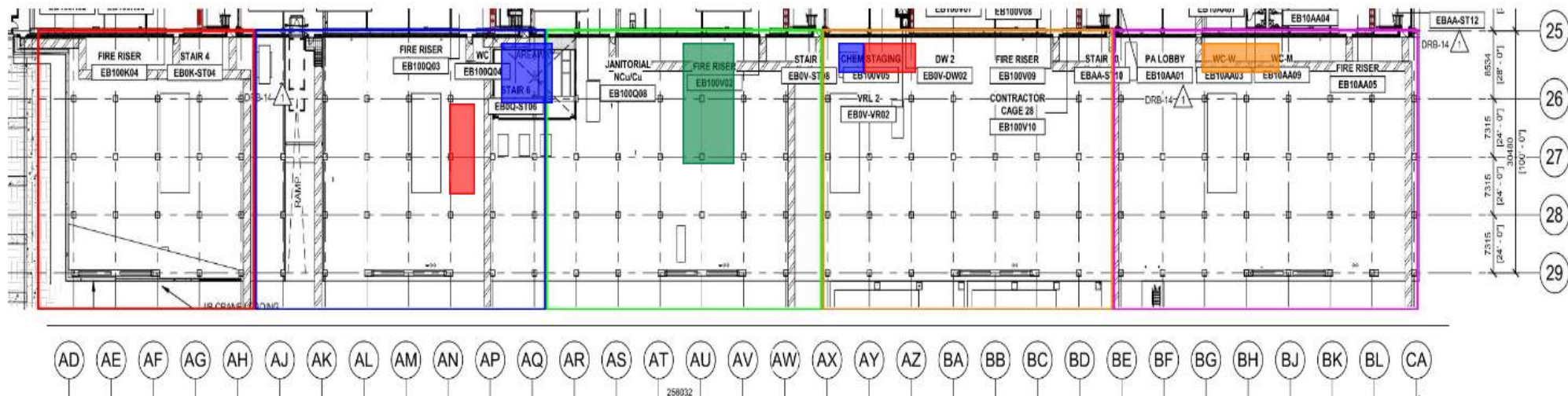
PSSS Roof
2SA





WJG – UL

	<ul style="list-style-type: none">*Pach Taas - installation of modules in west SUT.* BCT - installation of permanent stairs to AHU	<ul style="list-style-type: none">*Atcon - Installation of lighting and cable pulling	<ul style="list-style-type: none">* Carmel Bidud - installation of air ducts from AH* Megason - working on LSS	<ul style="list-style-type: none">* SK - working on CRW piping
--	---	---	---	--



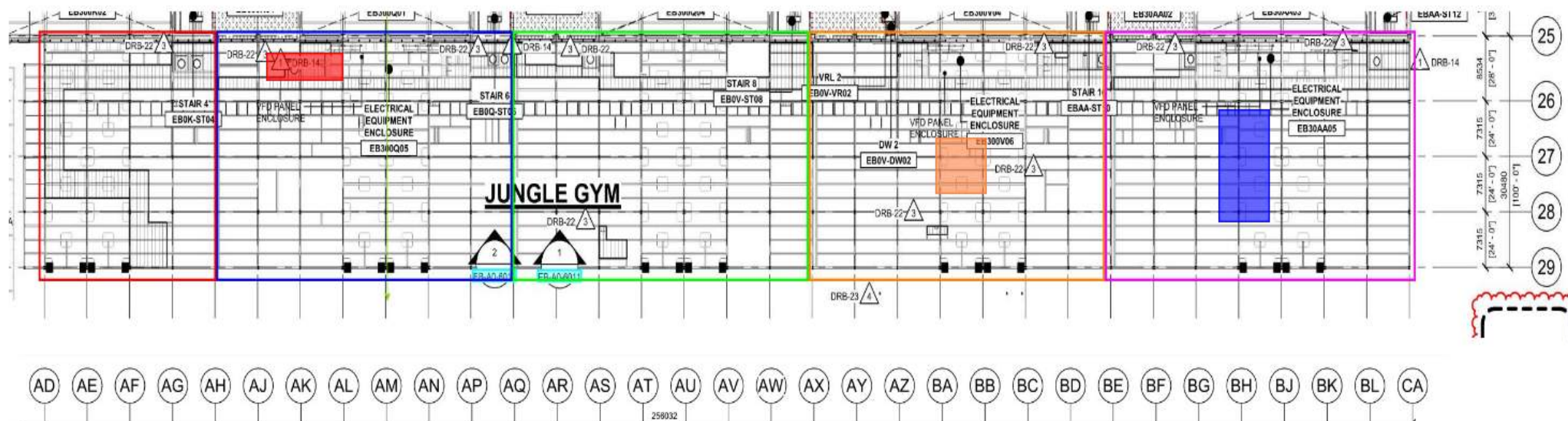


WJG – Lift 2

* Chemo - preparing for air test on UPN 113 in 2J-2W

* Pach Taas - connection of EPA platform to steel (second part)

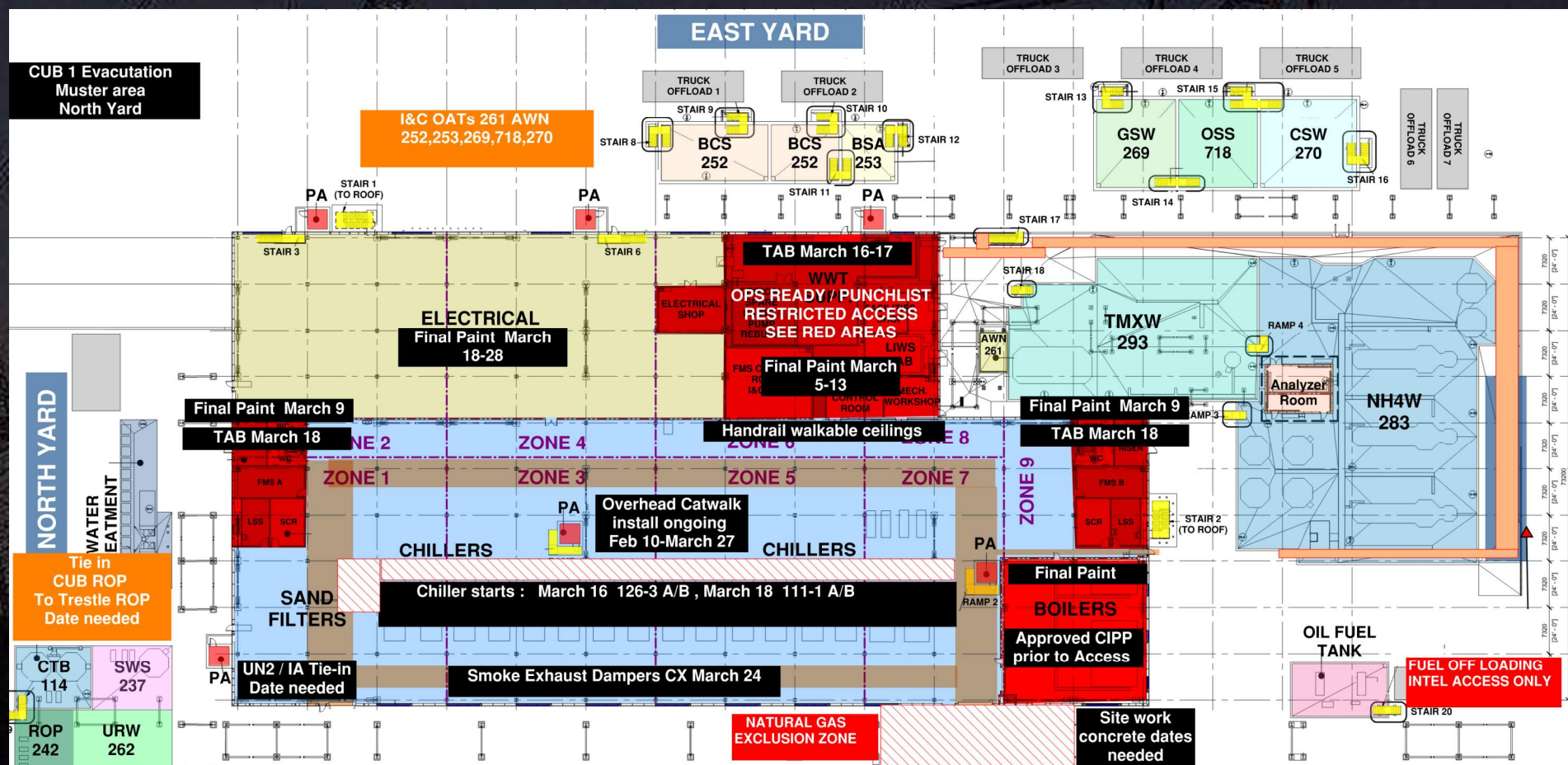
* Carmel Bidud - erection of 5J MAH scaffold



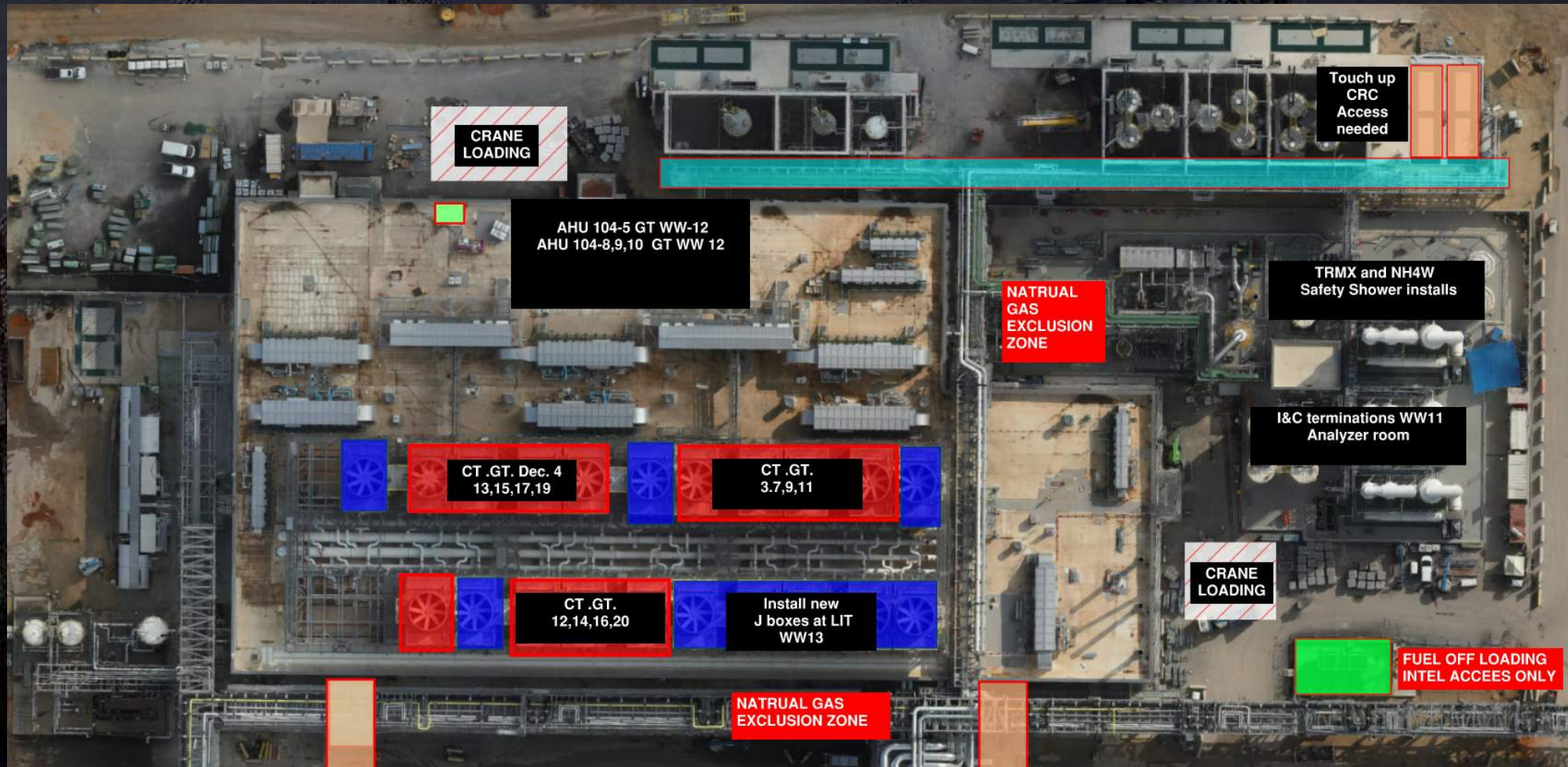
WJG – Lift 3

		* SN removing, cutting gratings and welding supports	* Pach Taas - hoisting and installing part 2 of the EPA platform	* SN -cutting grating penetrations
--	--	--	--	------------------------------------

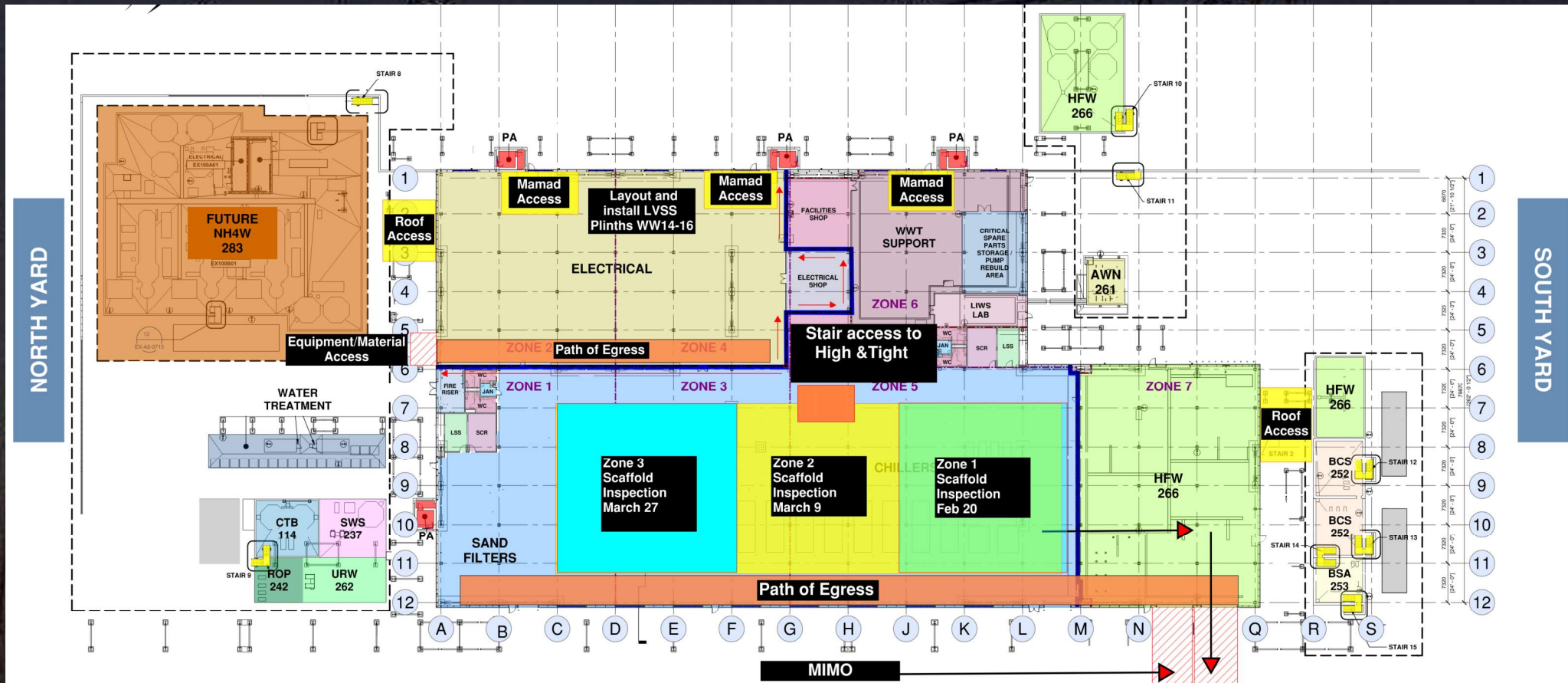




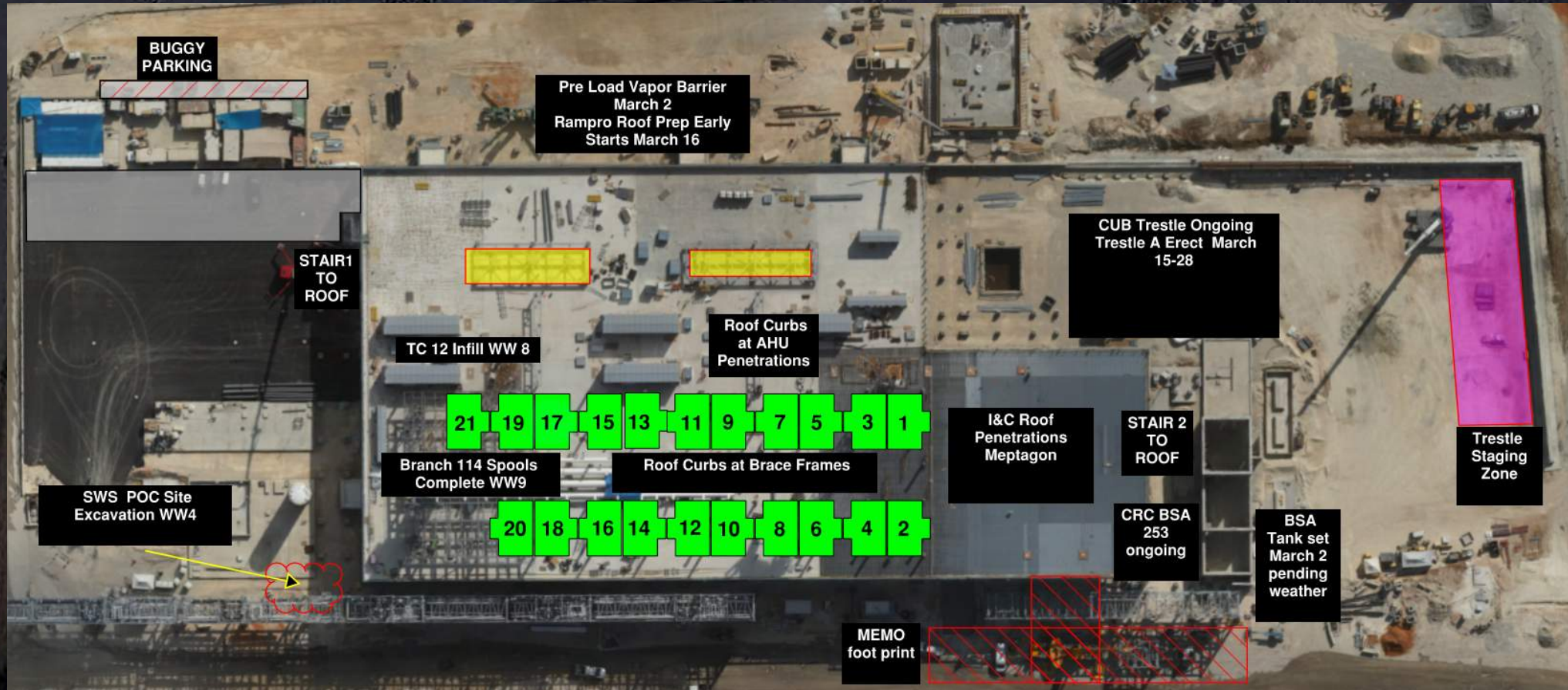
CUB 1 – EXTERIOR/ROOF

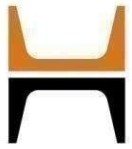


CUB 2- Load in ,H&T, Framing and Sheetrock

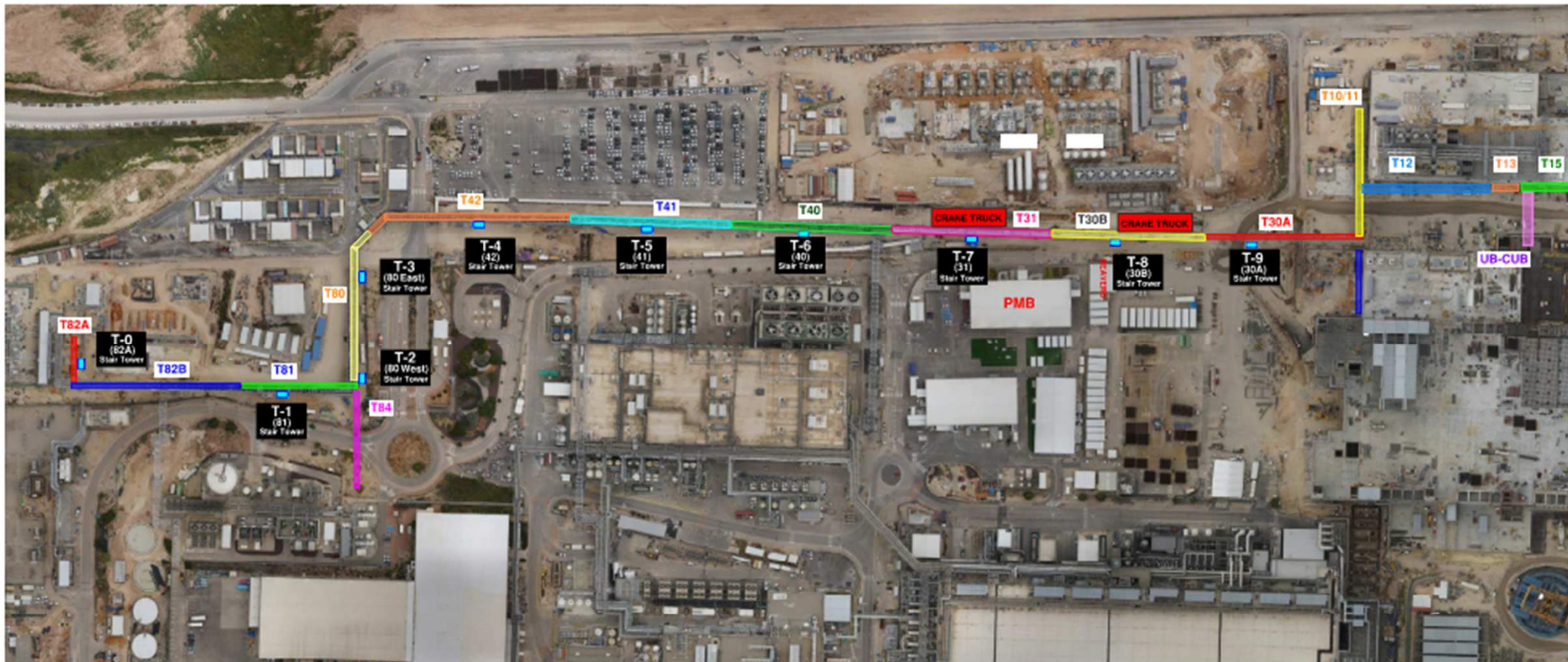


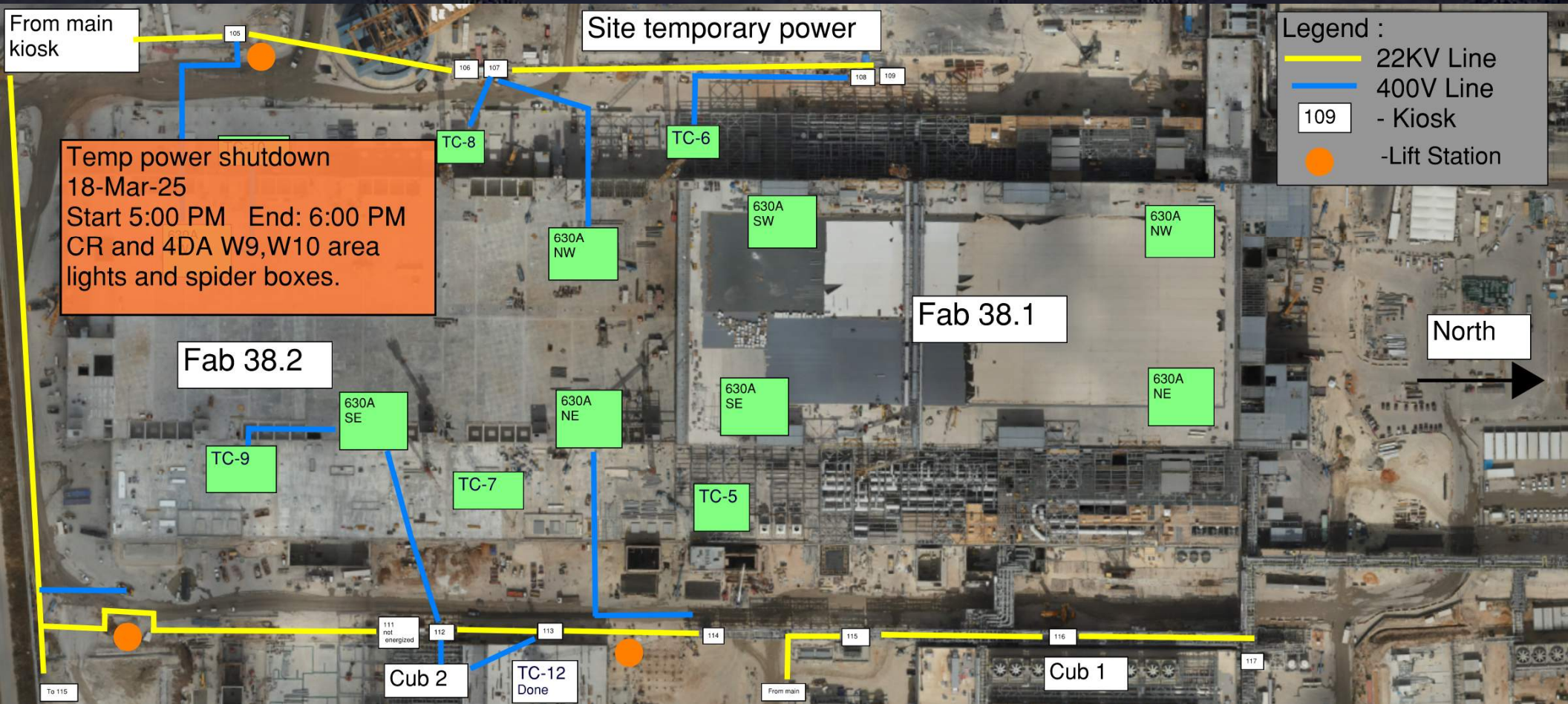
CUB 2 – EXTERIOR/ROOF





HOFFMAN CONSTRUCTION COMPANY



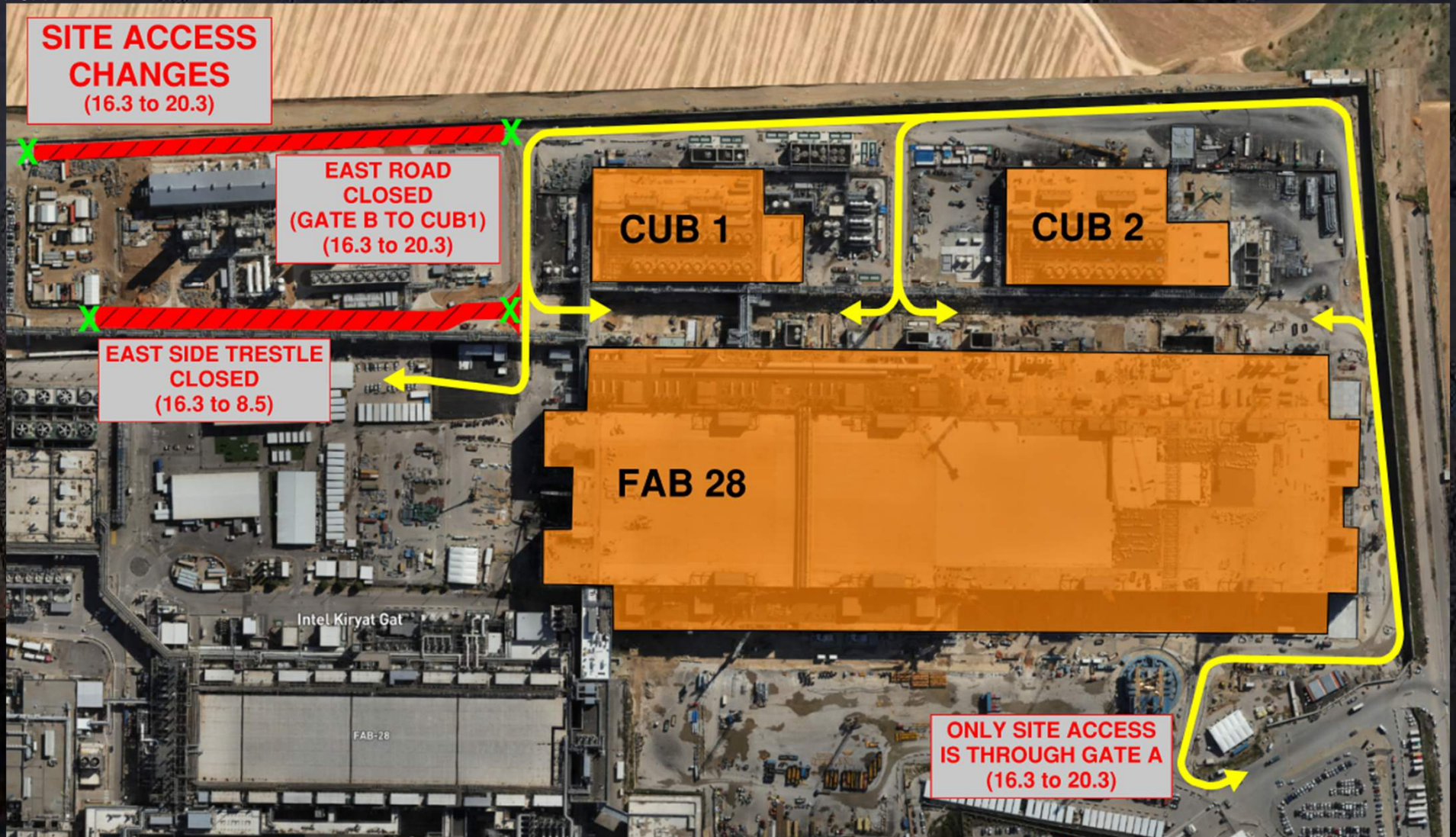




Daily Coordination Meeting

Site Logistics

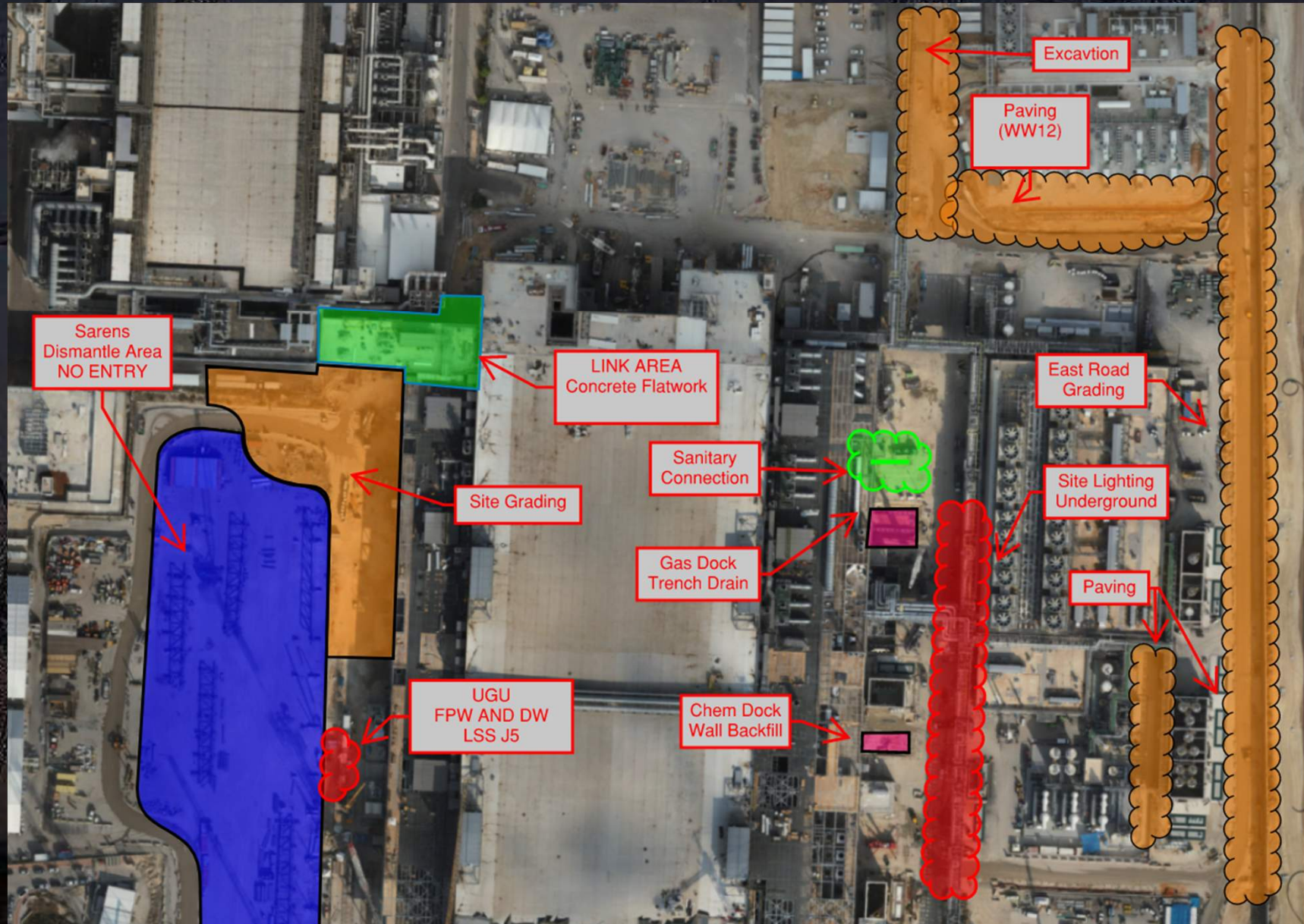
North





Daily Coordination Meeting

Site Logistics North



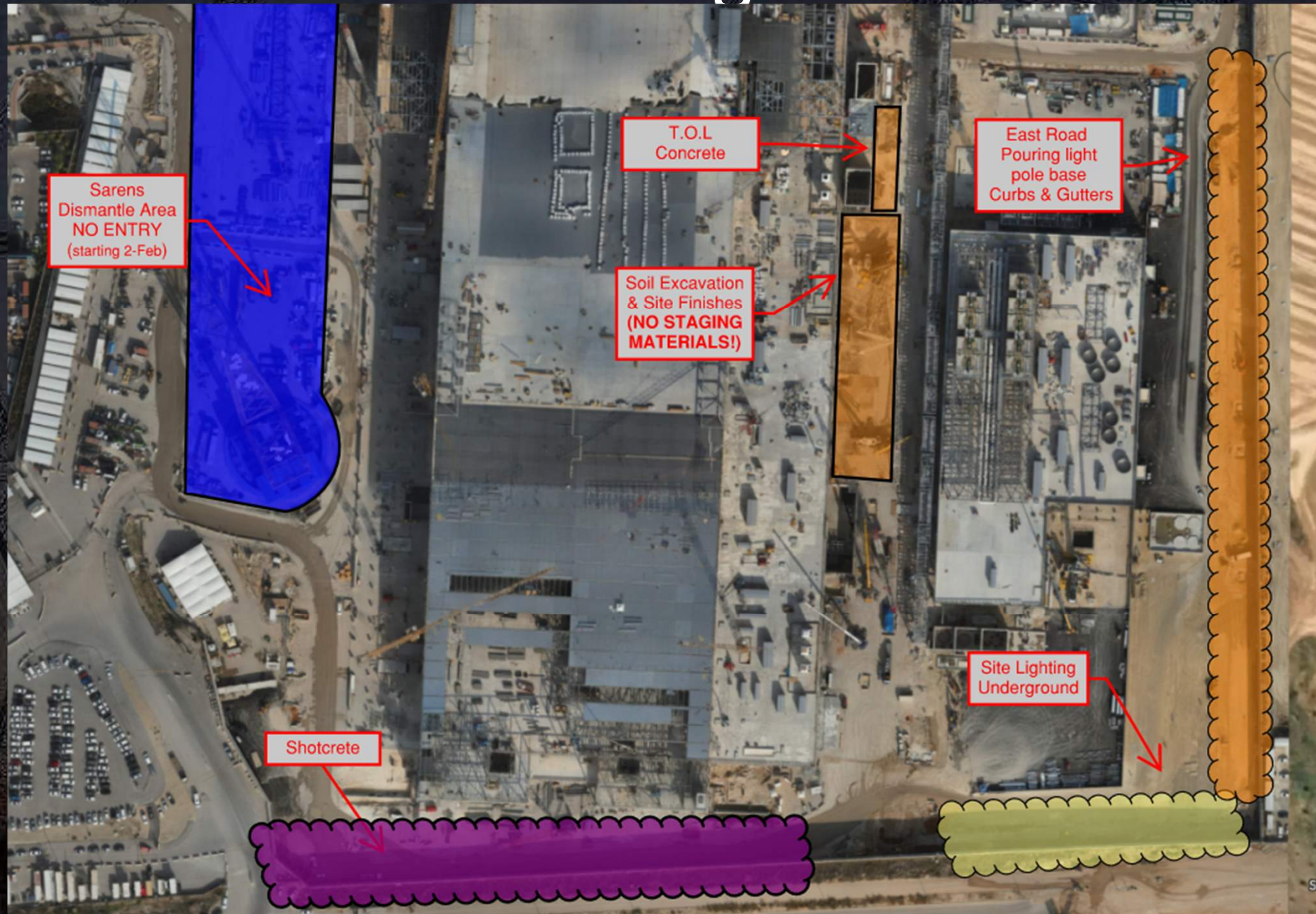


HOFFMAN CONSTRUCTION COMPANY



Daily Coordination Meeting

Site Logistics
South





Daily Coordination Meeting

Light plants are setup for lighting only, they are not properly grounded for use as temporary power.

***No one** is to use the light plants as a source of temporary power unless specifically approved through the Hoffman temp electrical team and Job Services.*

Dropped objects prevention

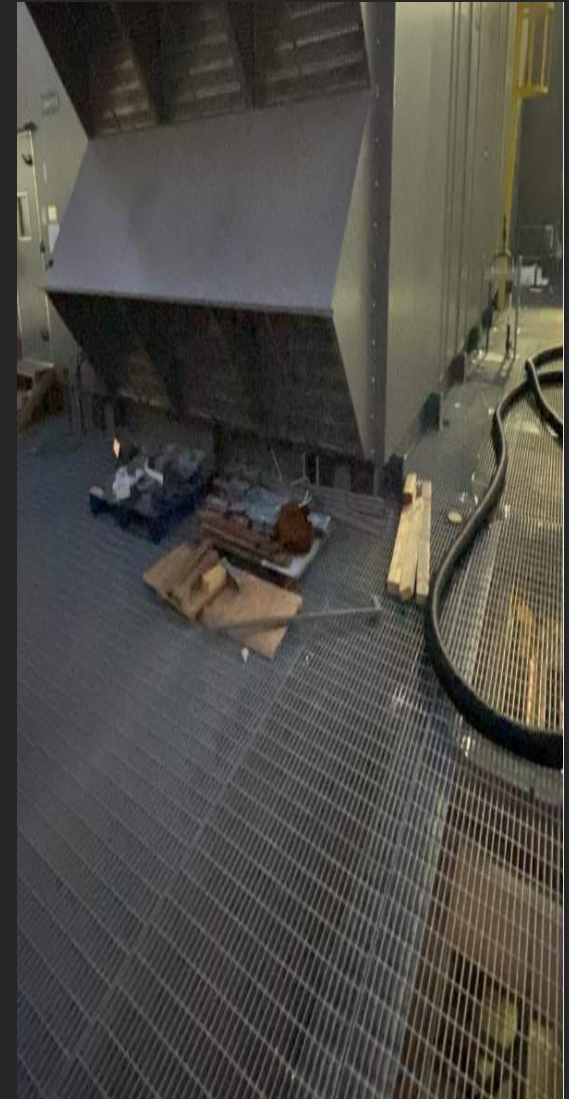
- Falling objects are a significant hazard on construction sites and other work environments.
- These objects can cause serious injuries or even fatalities to workers below. The risks arise from unsecured materials, tools, or equipment that may fall due to improper storage, lack of safety measures, or accidental displacement.
- To prevent these accidents, it is crucial to implement safety protocols such as securing tools and materials, using proper containment systems like nets or barriers, and ensuring workers wear appropriate head protection.
- Regular inspections and safety training also play a key role in minimizing the risk of falling objects.



HOFFMAN CONSTRUCTION COMPANY
OF ISRAEL



Dropped objects prevention



Daily Coordination Meeting



14:00 Sign In