

# Daily Coordination Meeting



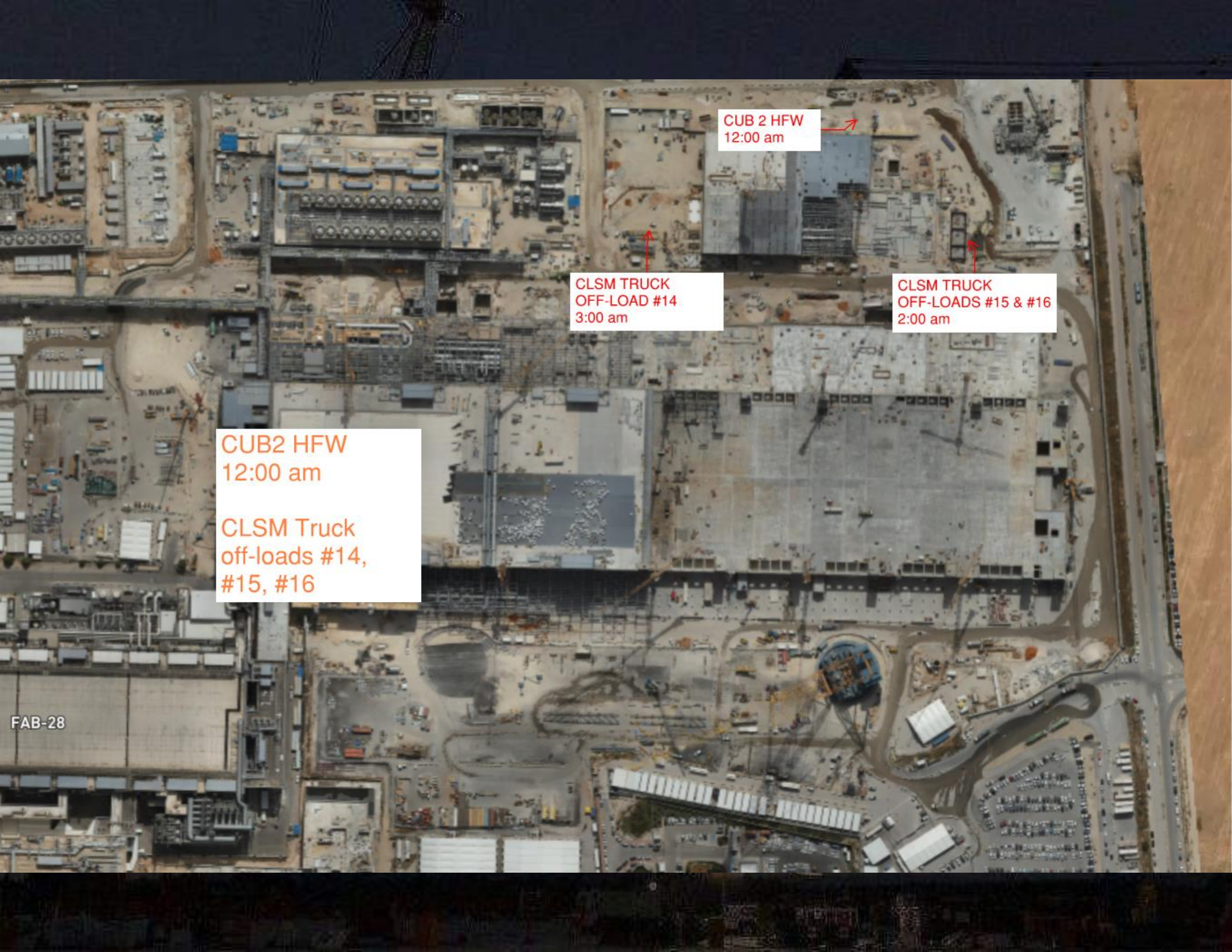
14:00 Sign In

# Daily Coordination Meeting

## General Topics:

- Red flags- holidays start next week





CUB 2 HFW  
12:00 am

CLSM TRUCK  
OFF-LOAD #14  
3:00 am

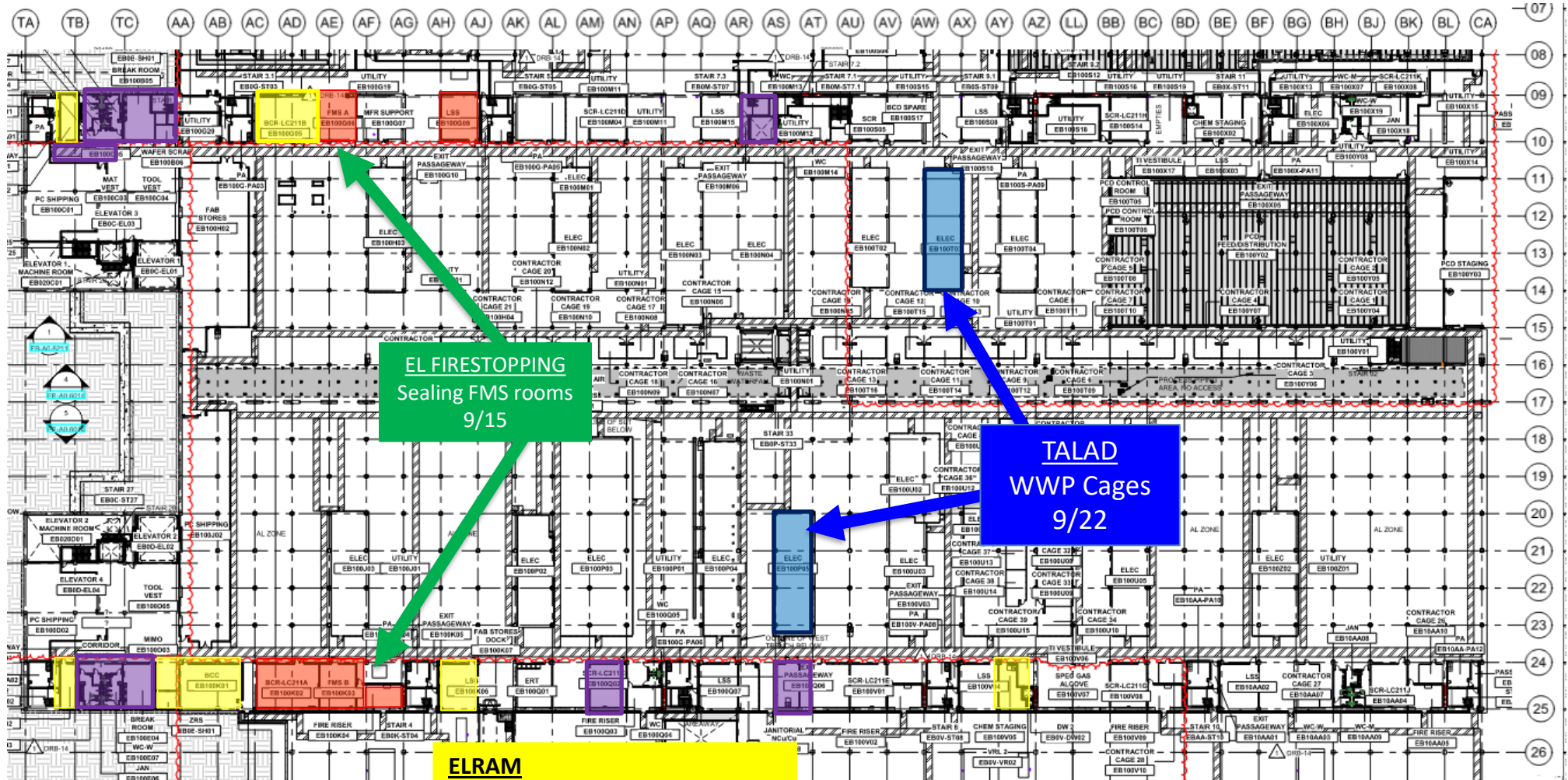
CLSM TRUCK  
OFF-LOADS #15 & #16  
2:00 am

CUB2 HFW  
12:00 am  
  
CLSM Truck  
off-loads #14,  
#15, #16

FAB-28



## UTILITY LEVEL MOD1



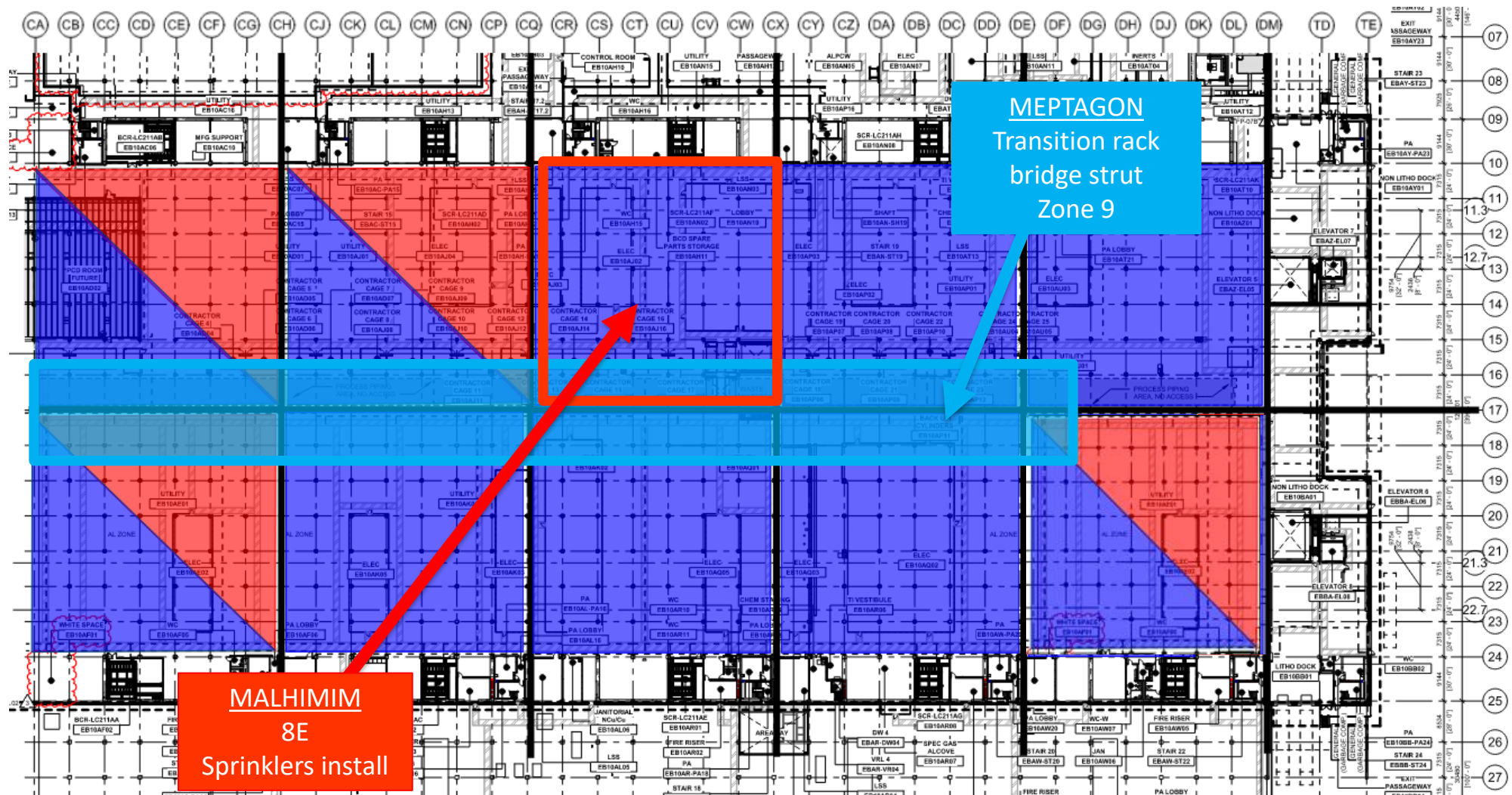
**BELFOR**  
 TTNE - Corridor + Toilets + Break R  
 Stairs 7.3  
 Wafer scrap  
 TTNW - Toilets + Break R  
 SCR 2W  
 Exit pass 3W

**ELRAM**  
 Ongoing  
 LSS TTNW + TTNE  
 BCR 1E  
 CHEN STAGING  
 LSS 2W  
 Chem staging  
**BACKING**  
 BCR 1E+1W – Pending funding  
 LSS's

**MEP+Elctrical**  
 Ready for re-install  
 FMS A 1E  
 FMS B 1W  
 Fire Risers 1W  
 BCC

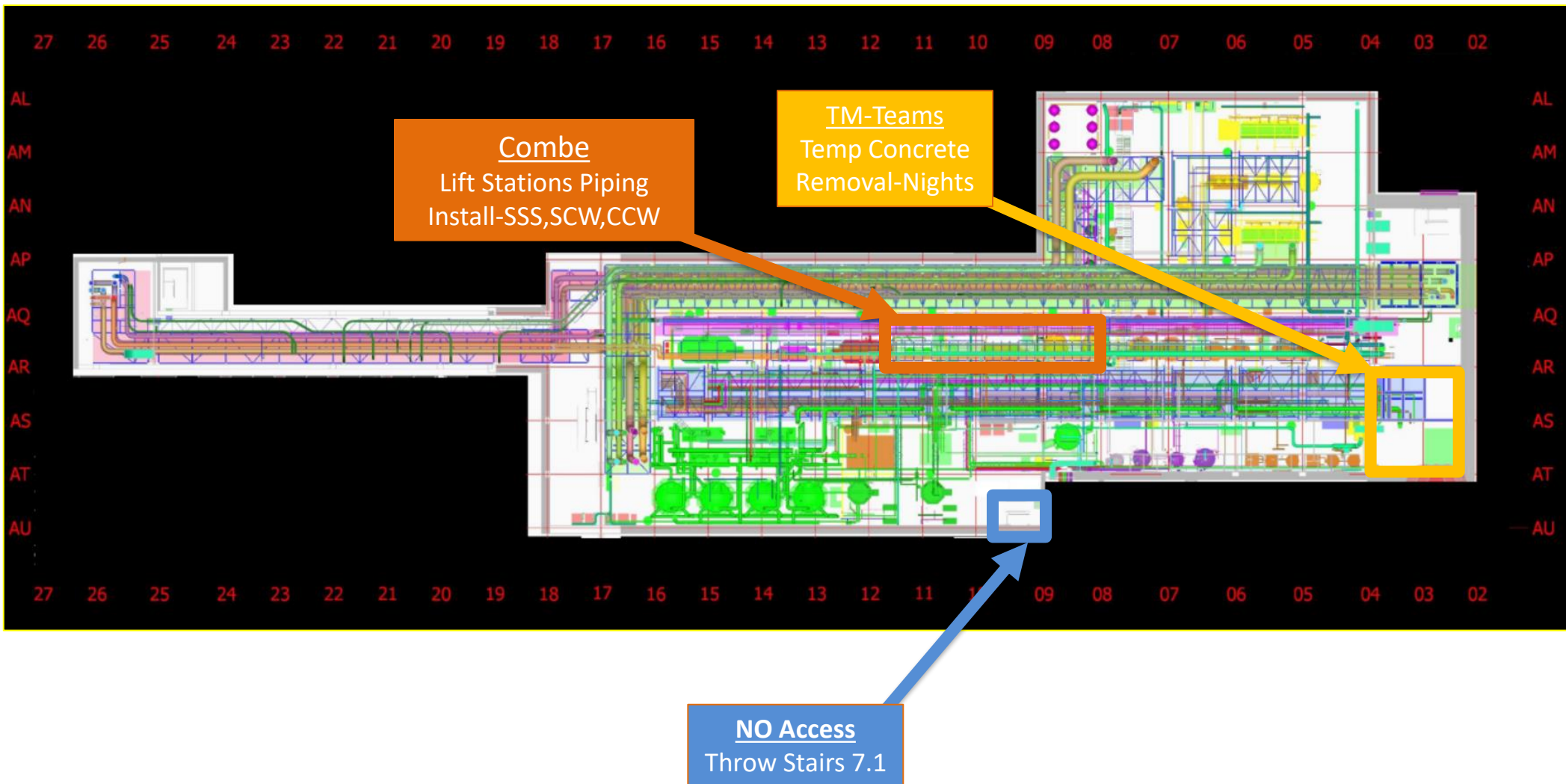


# UTILITY LEVEL MOD2





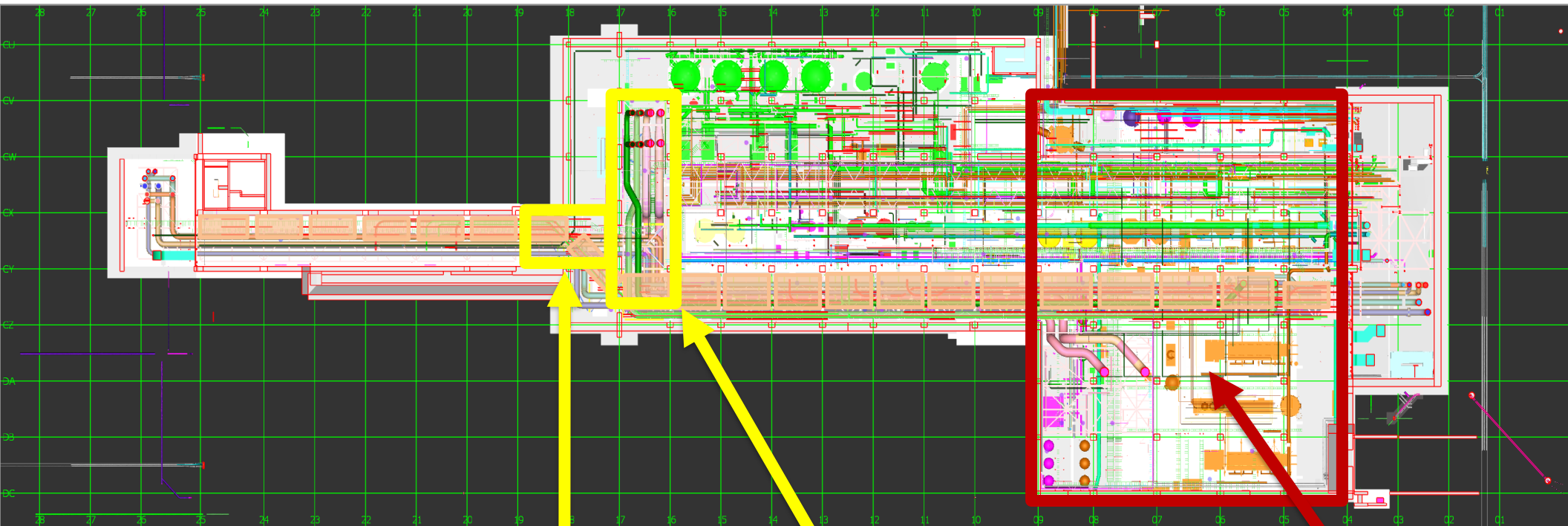
# SUT 38.1 LEVEL







## SUT 38.2 LEVEL



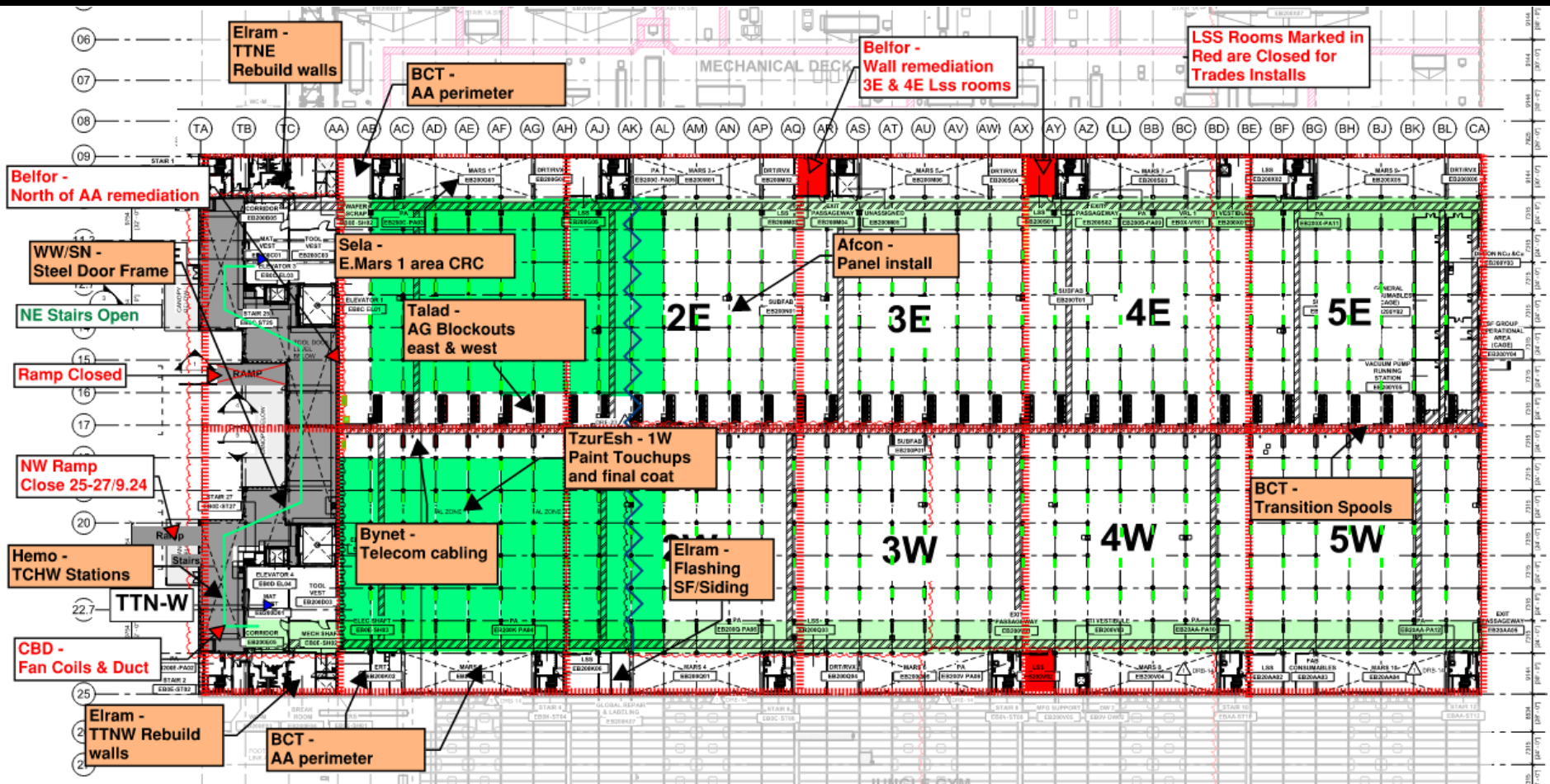
CRW  
H&T  
NEED PIPING

17-18 line  
Bore Loading

16-17 line  
lvl2+3  
bed lift: Need a  
Date

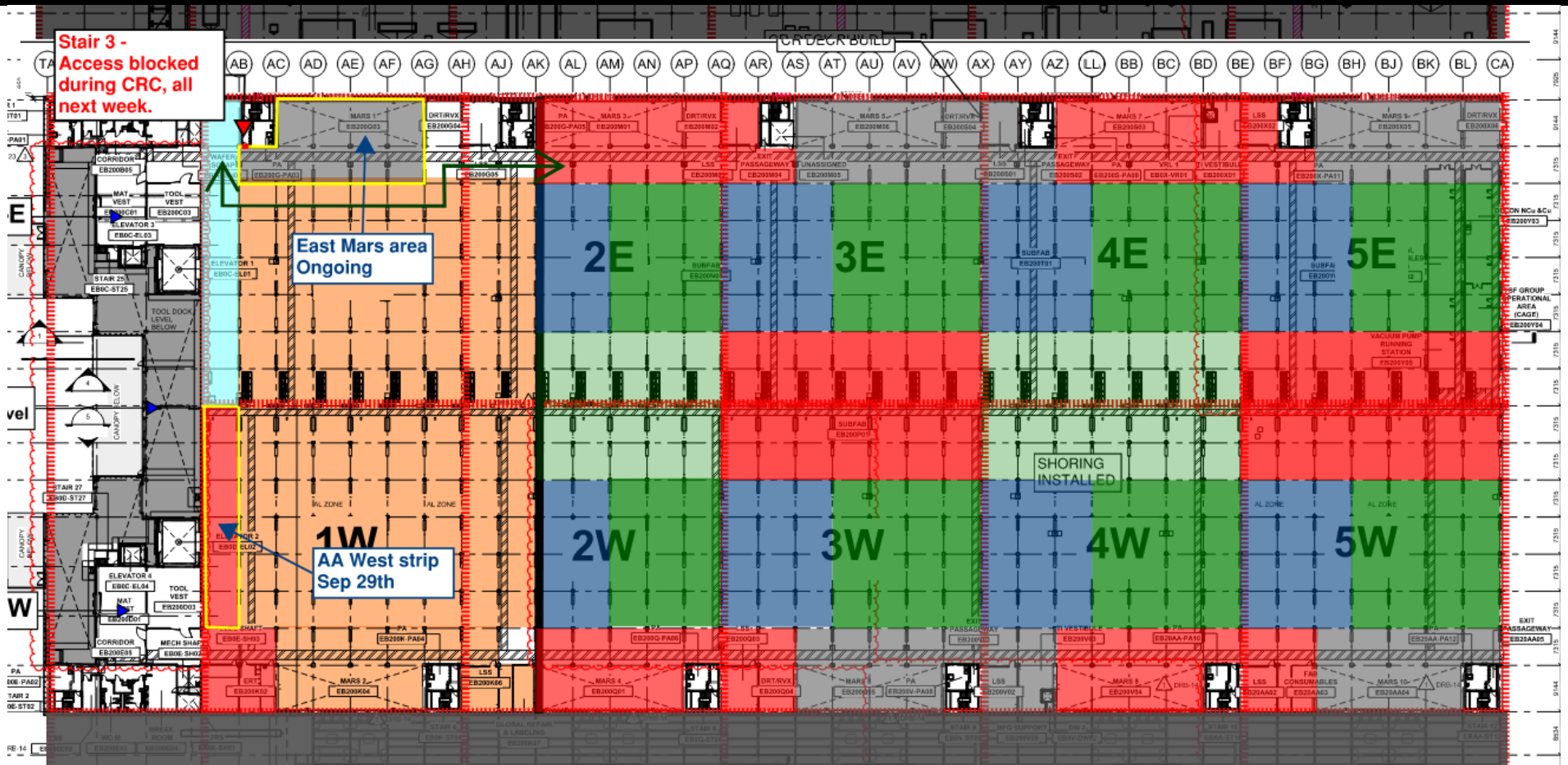
Vesda  
H&T  
Ongoing

## SUBFAB BUILDOUT MOD 1

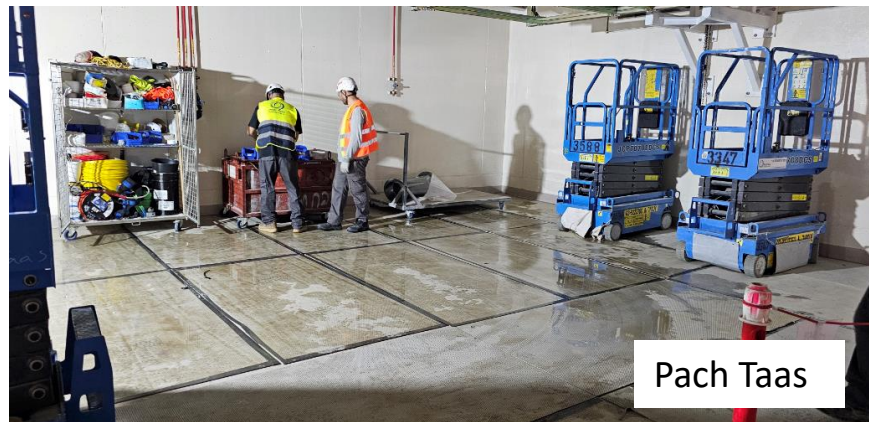
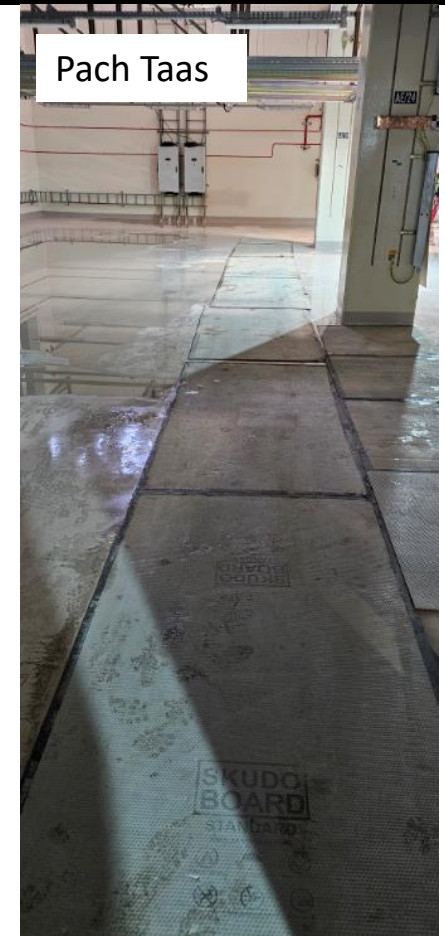




# SUBFAB CRC TOPCOAT

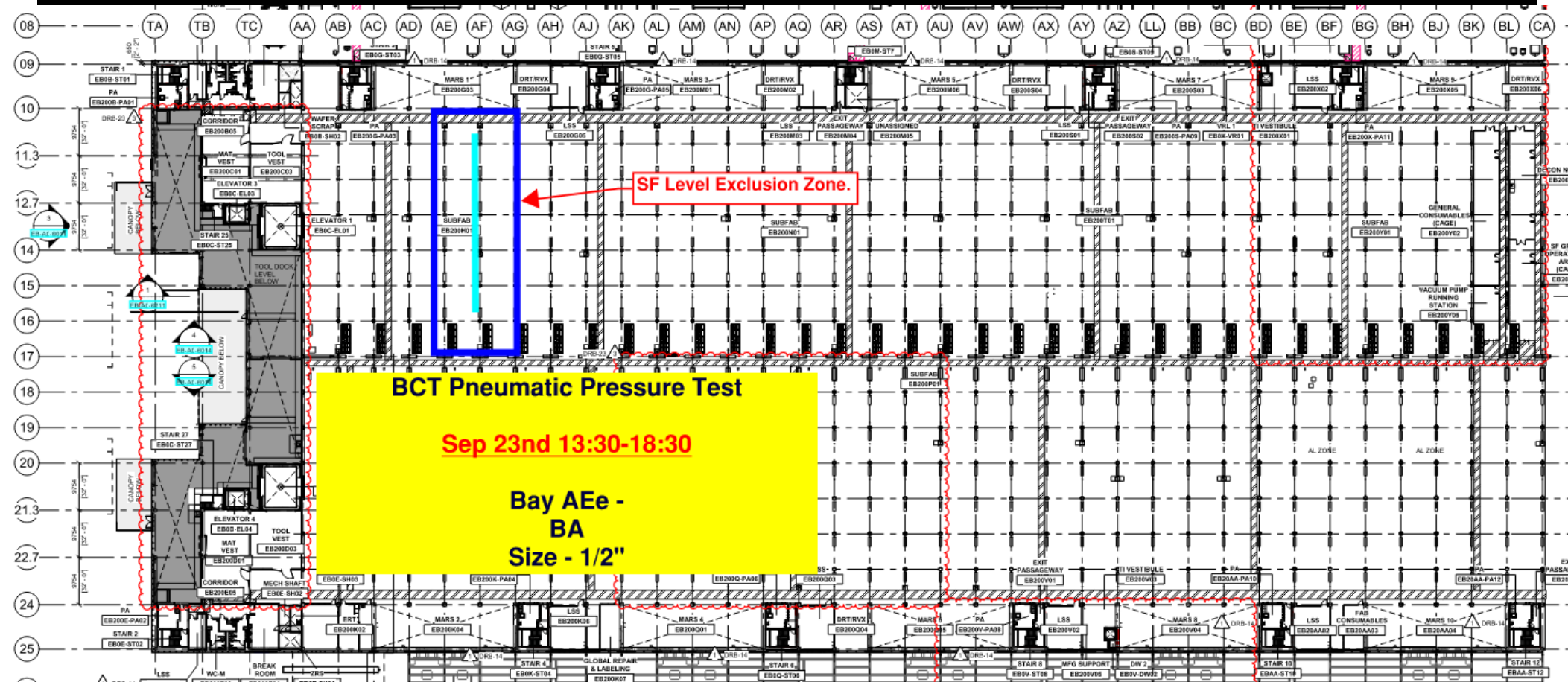


# SUBFAB CRC TOPCOAT

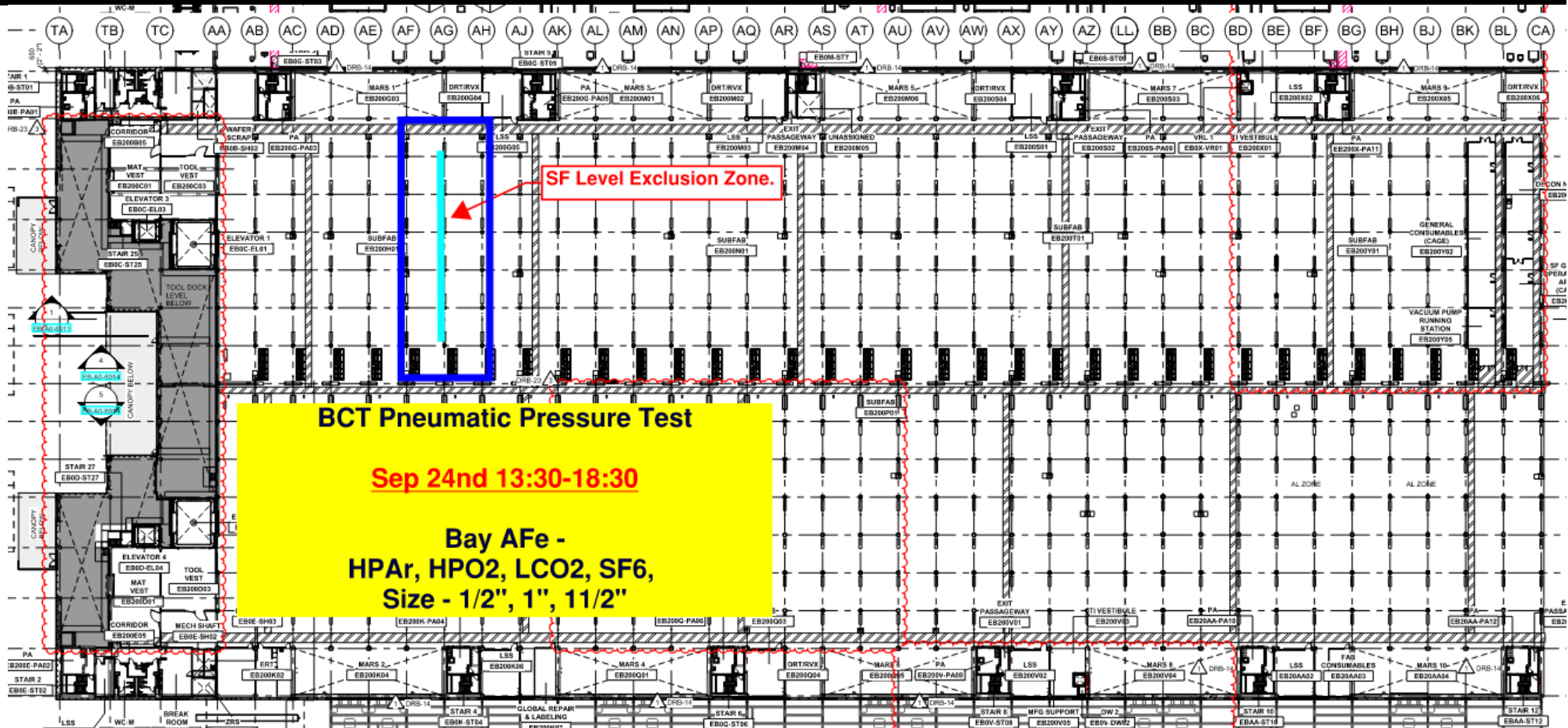




# SUBFUB PRESSURE TEST EXCLUSION ZONES

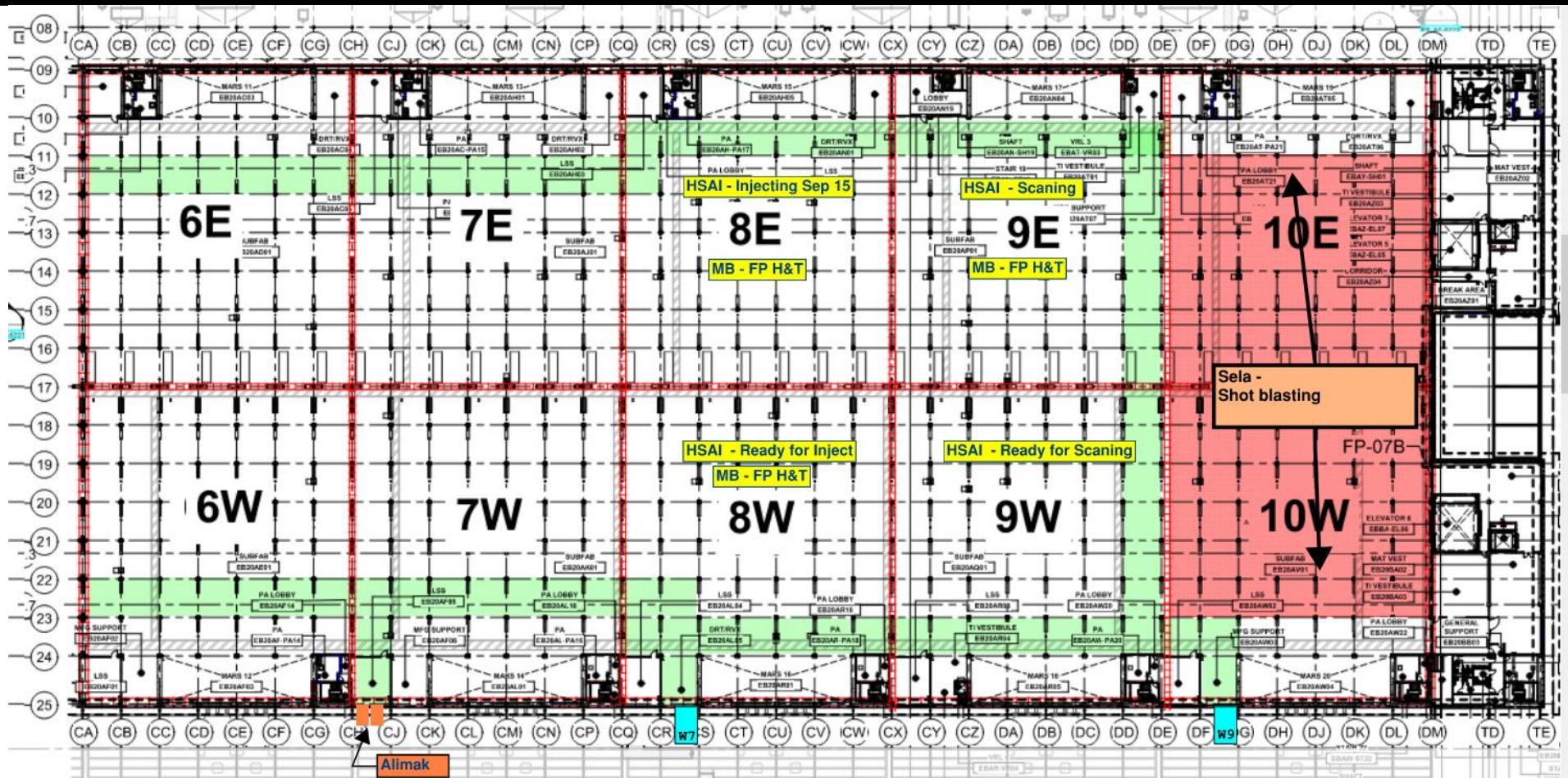


# SUBFUB PRESSURE TEST EXCLUSION ZONES

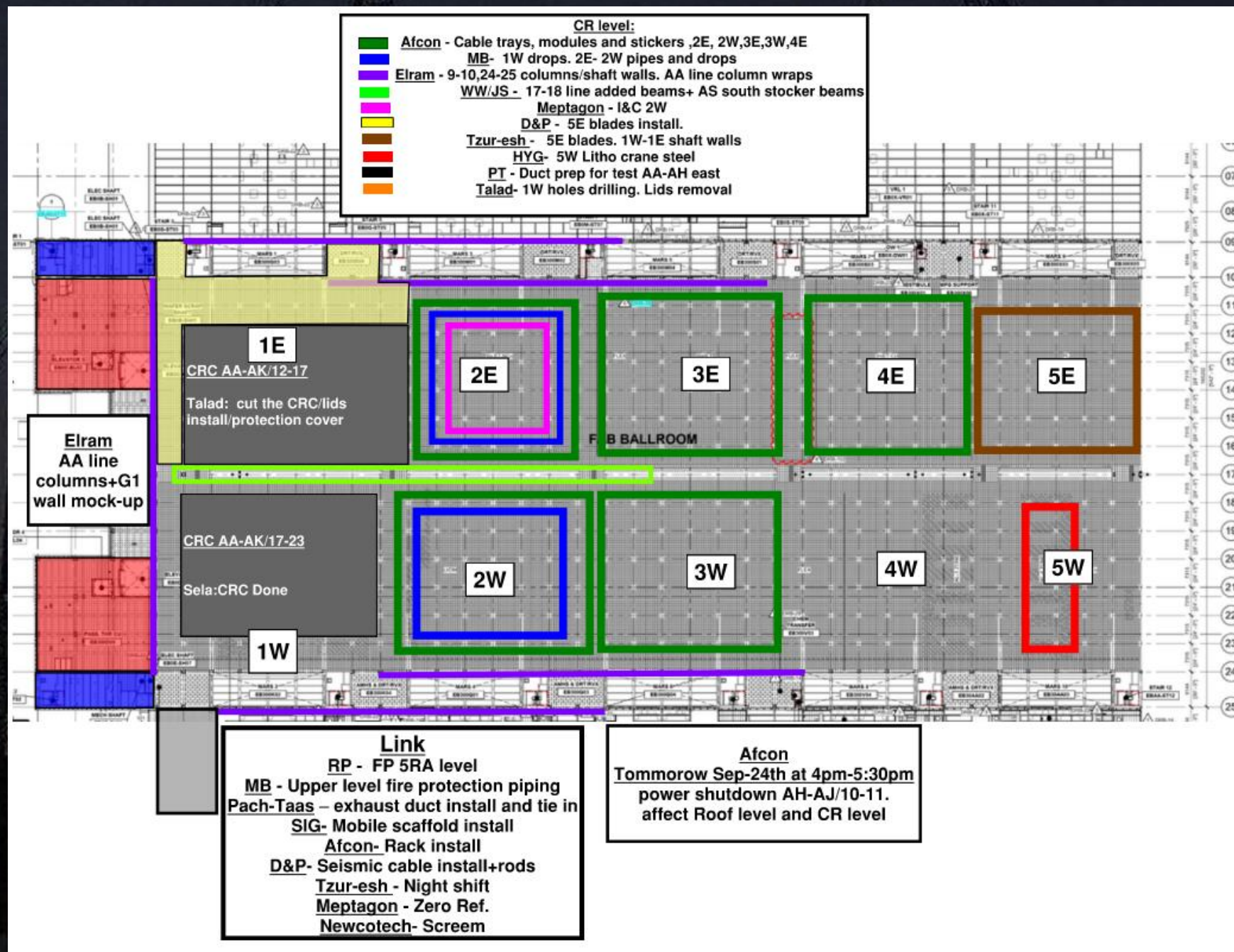




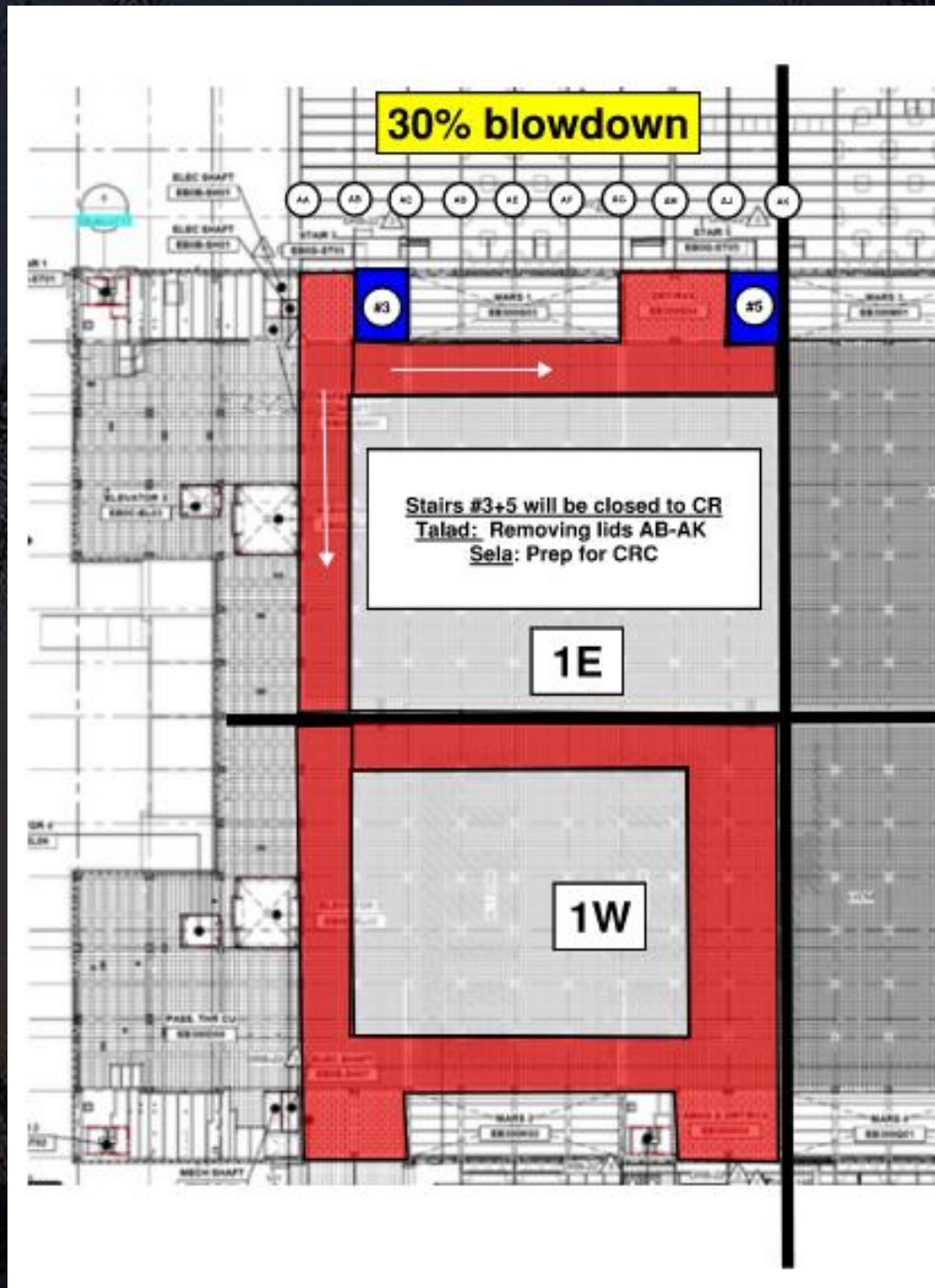
# SUBFAB BUILDOUT MOD 2

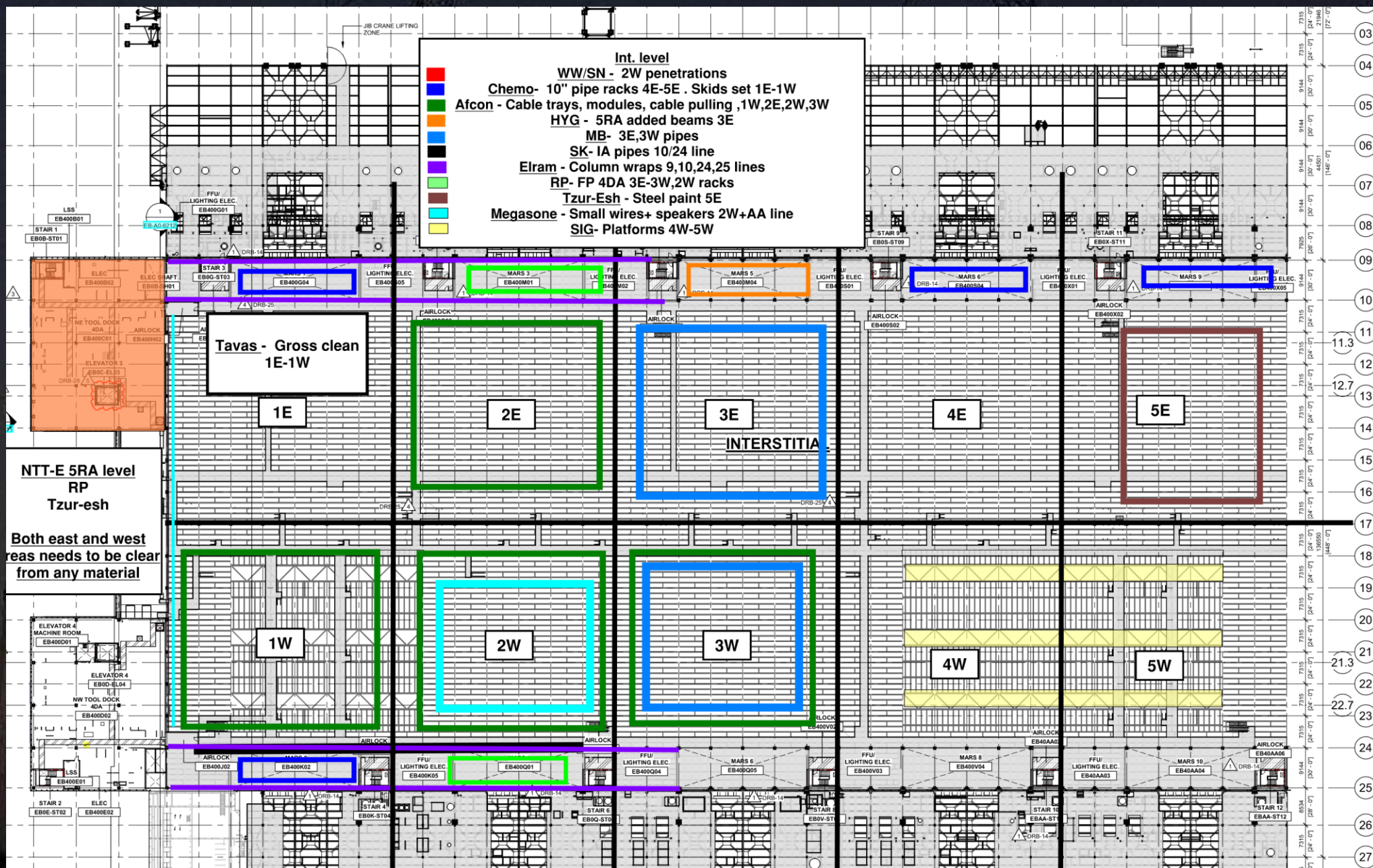
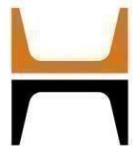




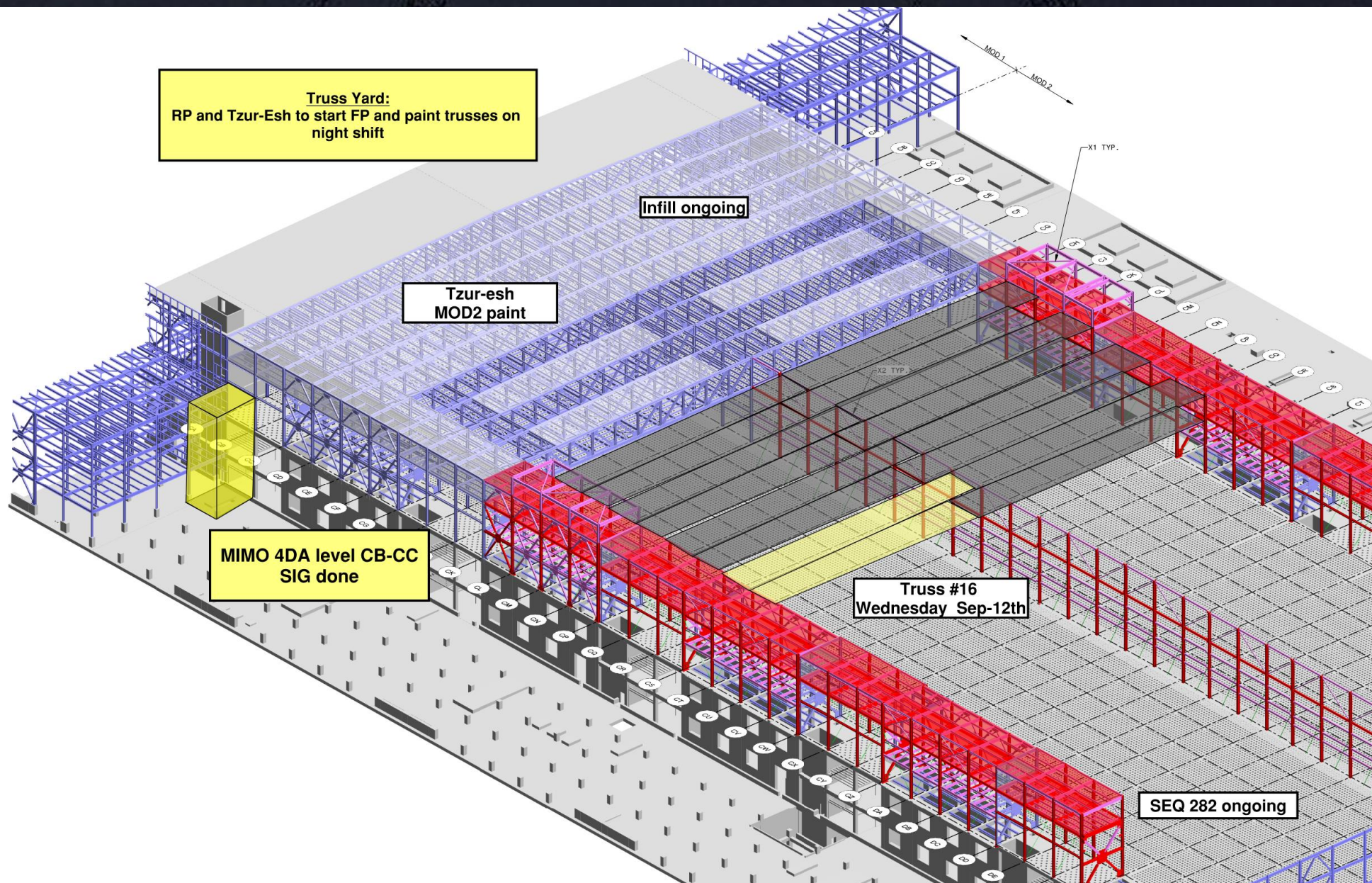
















**Clean Room Wall Of Shame**

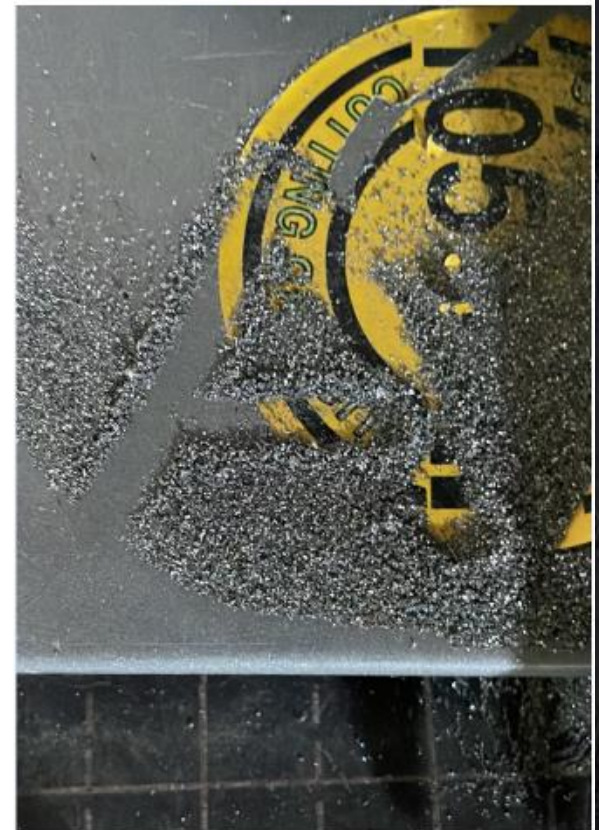
**SN**



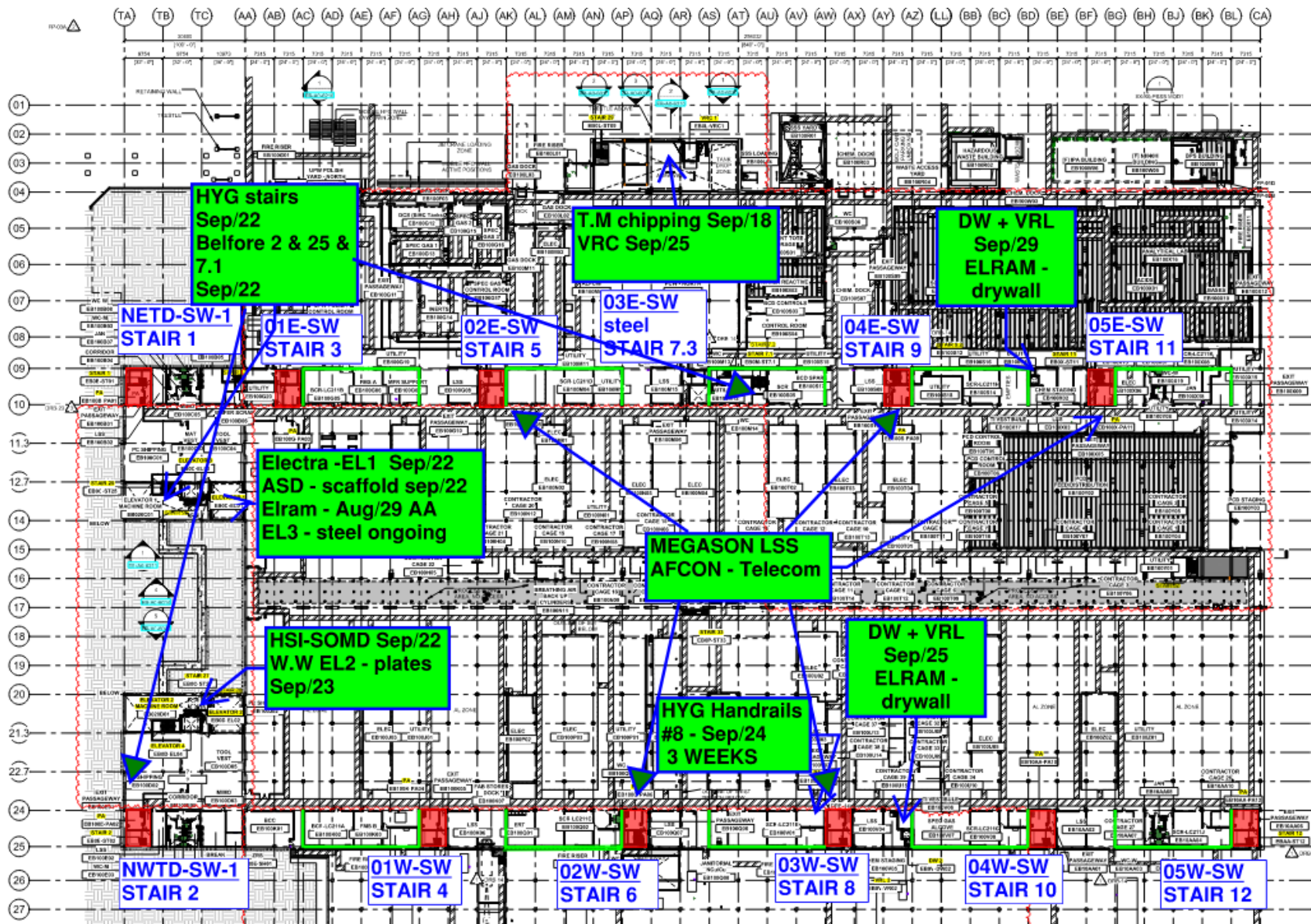
**Elram**



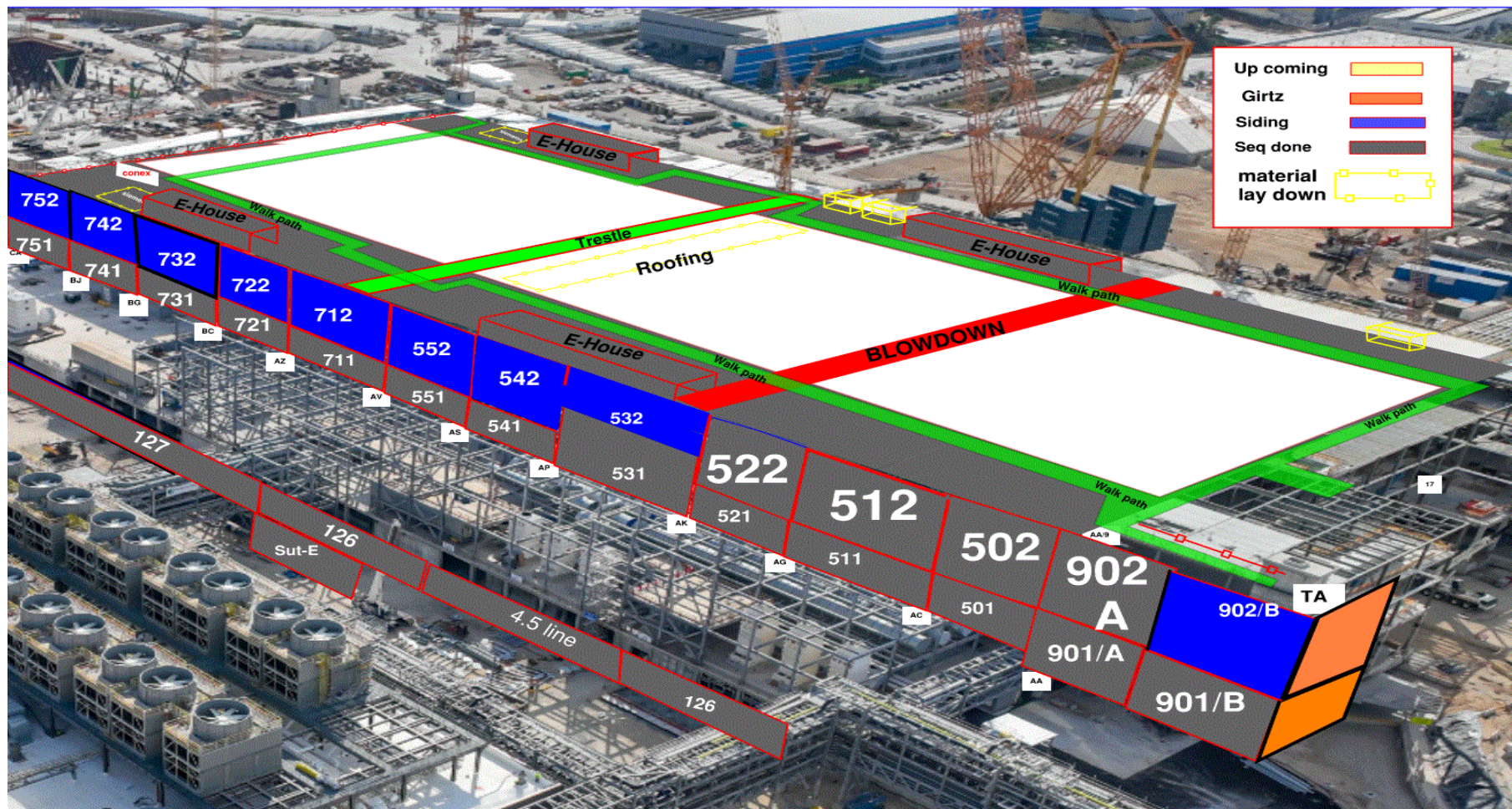
**Afcon**



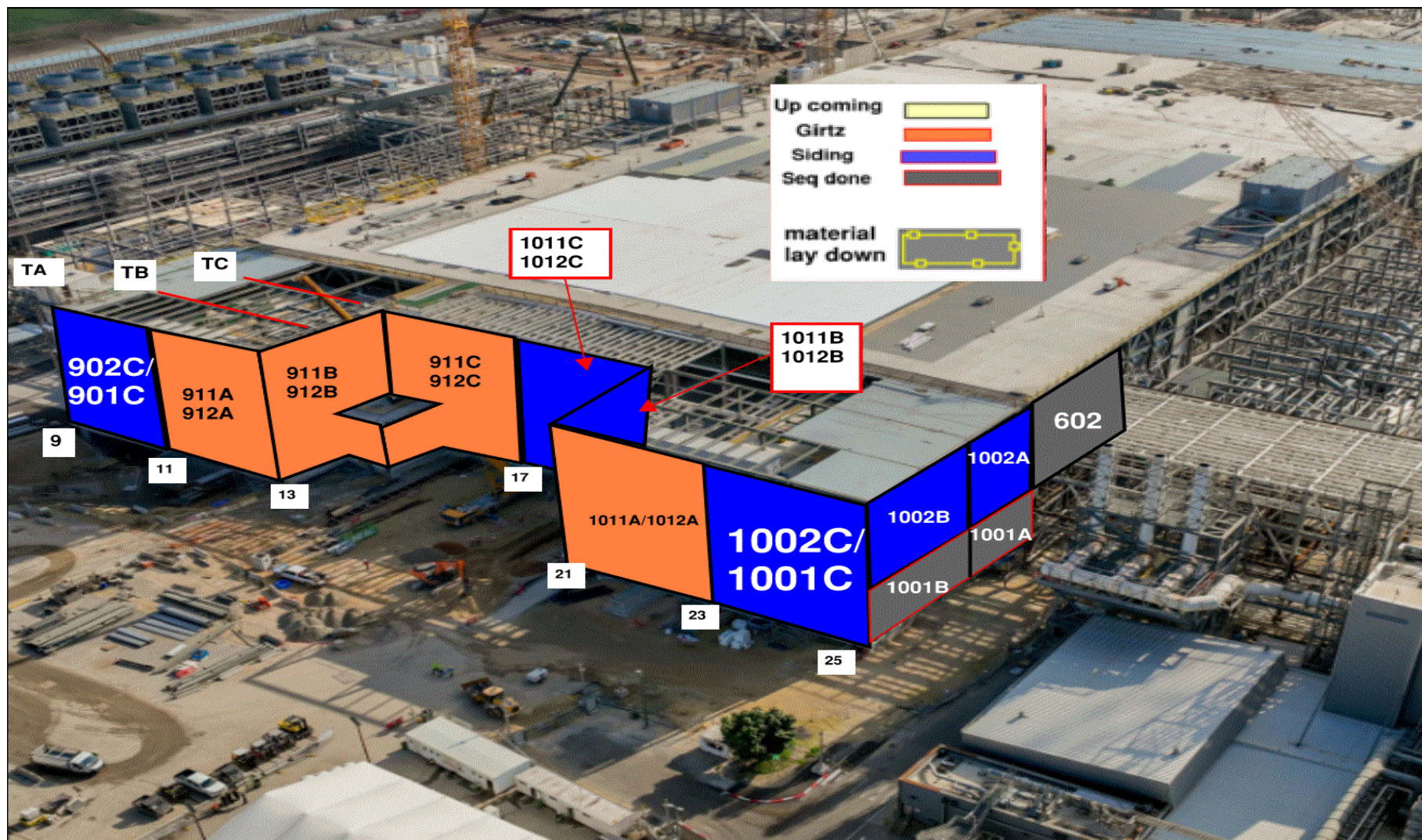




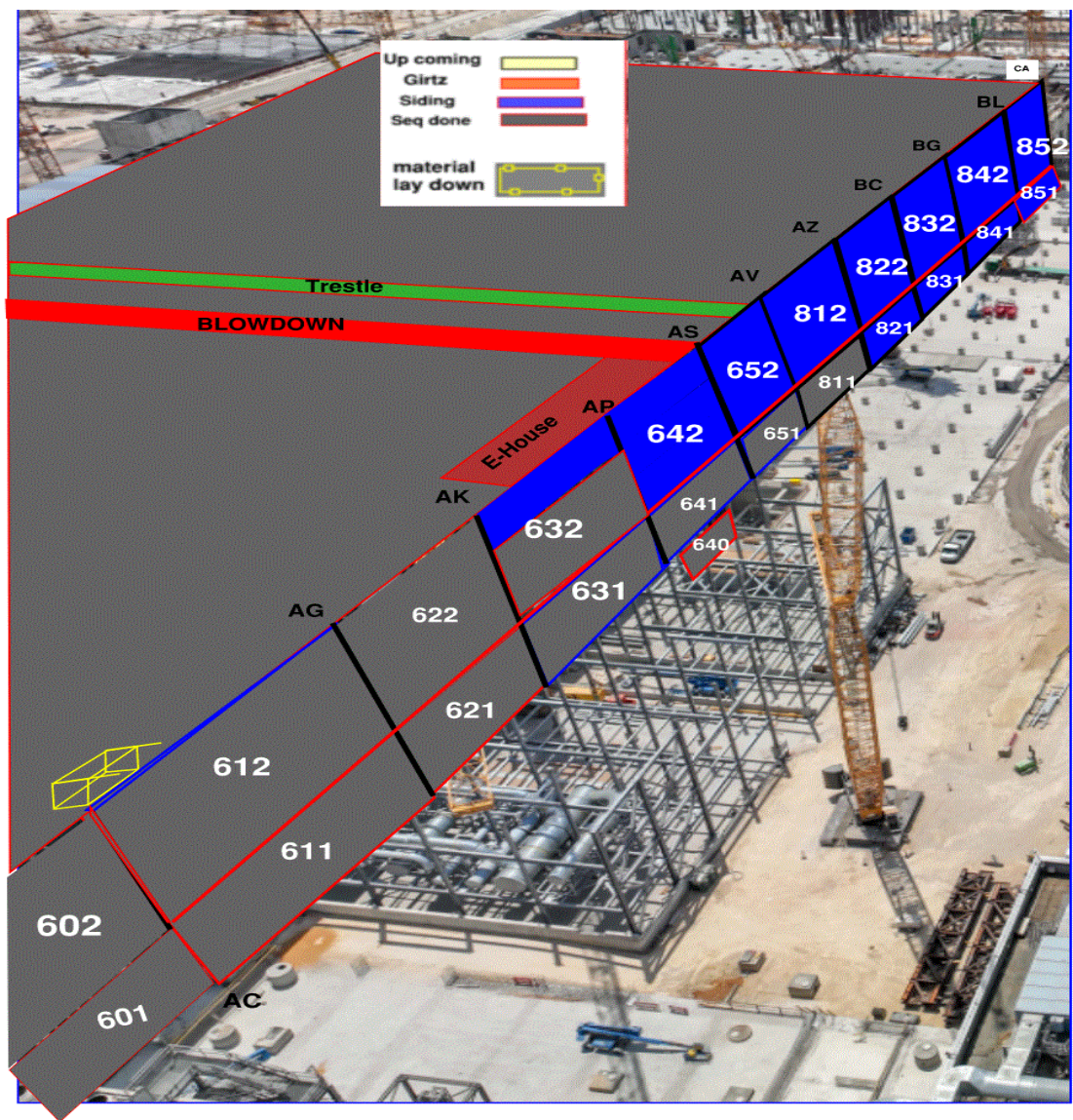














# Siding - West FAB - JYG

BLOWDOWN 30%

Siding - West FAB - JYG																																											
BLOWDOWN 30%																																											
TA	TB	TC	AA	AB	AC	AD	AE	AF	AG	AH	AI	AJ	AK	AL	AM	AN	AO	AR	AS	AT	AU	AV	AW	AX	AY	AZ	BA	BB	BC	BD	BE	BF	BG	BH	BI	BK	BL	CA					
1001 / 1002				601 / 602		611 / 612				621 / 622				631 / 632				641 / 642				651 / 652				811 / 812				821 / 822				831 / 832				841 / 842				851 / 852	
Total	20	20	20	15	10	31	31	31	31	31	31	31	31	31	24	23	13	14	14	14	6	6	6	6	14	14	14	14	14	6	6	9	13	1	1	1	1	1	1	1	1		
Installed	8	14	10	12	10	31	31	31	31	31	31	31	31	31	24	23	13	14	14	14	6	6	6	6	14	14	14	14	14	6	6	9	13	1	1	1	1	1	1	1			
%	29%	50%	36%	90%	100%	100%	100%	100%	100%	100%	100%	100%	100%	100%	77%	74%	42%	45%	45%	45%	19%	19%	19%	19%	45%	45%	45%	45%	45%	19%	19%	29%	42%	3%	3%	3%	3%	8%	8%	8%			
SRA	0	0	0			1	1	1	1	1	1	1	1	1	0	0	0	0	0	0	0	0	0	0	0	0	0	0	0	0	0	0	0	0	0	0	0	0	0				
	0	0	0			1	1	1	1	1	1	1	1	1	0	0	0	0	0	0	0	0	0	0	0	0	0	0	0	0	0	0	0	0	0	0	0	0					
	0	0	0			1	1	1	1	1	1	1	1	1	0	0	0	0	0	0	0	0	0	0	0	0	0	0	0	0	0	0	0	0	0	0	0	0					
	0	0	0			1	1	1	1	1	1	1	1	1	0	0	0	0	0	0	0	0	0	0	0	0	0	0	0	0	0	0	0	0	0	0	0	0					
4DA	0	0	0			1	1	1	1	1	1	1	1	1	0	0	0	0	0	0	0	0	0	0	0	0	0	0	0	0	0	0	0	0	0	0	0	0	0				
	0	0	0			1	1	1	1	1	1	1	1	1	0	0	0	0	0	0	0	0	0	0	0	0	0	0	0	0	0	0	0	0	0	0	0	0					
	0	0	0			1	1	1	1	1	1	1	1	1	0	0	0	0	0	0	0	0	0	0	0	0	0	0	0	0	0	0	0	0	0	0	0	0					
	0	0	0			1	1	1	1	1	1	1	1	1	0	0	0	0	0	0	0	0	0	0	0	0	0	0	0	0	0	0	0	0	0	0	0	0					
3FK	0	0	0			1	1	1	1	1	1	1	1	1	0	0	0	0	0	0	0	0	0	0	0	0	0	0	0	0	0	0	0	0	0	0	0	0	0				
	0	0	0			1	1	1	1	1	1	1	1	1	0	0	0	0	0	0	0	0	0	0	0	0	0	0	0	0	0	0	0	0	0	0	0	0					
	0	0	0			1	1	1	1	1	1	1	1	1	0	0	0	0	0	0	0	0	0	0	0	0	0	0	0	0	0	0	0	0	0	0	0	0					
	0	0	0			1	1	1	1	1	1	1	1	1	0	0	0	0	0	0	0	0	0	0	0	0	0	0	0	0	0	0	0	0	0	0	0	0					
3FA	0	0	0			1	1	1	1	1	1	1	1	1	0	0	0	0	0	0	0	0	0	0	0	0	0	0	0	0	0	0	0	0	0	0	0	0	0				
	0	0	0			1	1	1	1	1	1	1	1	1	0	0	0	0	0	0	0	0	0	0	0	0	0	0	0	0	0	0	0	0	0	0	0	0					
	0	0	0			1	1	1	1	1	1	1	1	1	0	0	0	0	0	0	0	0	0	0	0	0	0	0	0	0	0	0	0	0	0	0	0	0					
	0	0	0			1	1	1	1	1	1	1	1	1	0	0	0	0	0	0	0	0	0	0	0	0	0	0	0	0	0	0	0	0	0	0	0	0					
2SA SF	0	0	0			1	1	1	1	1	1	1	1	1	0	0	0	0	0	0	0	0	0	0	0	0	0	0	0	0	0	0	0	0	0	0	0	0	0				
	0	0	0			1	1	1	1	1	1	1	1	1	0	0	0	0	0	0	0	0	0	0	0	0	0	0	0	0	0	0	0	0	0	0	0	0					
	0	0	0			1	1	1	1	1	1	1	1	1	0	0	0	0	0	0	0	0	0	0	0	0	0	0	0	0	0	0	0	0	0	0	0	0					
	0	0	0			1	1	1	1	1	1	1	1	1	0	0	0	0	0	0	0	0	0	0	0	0	0	0	0	0	0	0	0	0	0	0	0	0					
UL	0	0	0			1	1	1	1	1	1	1	1	1	0	0	0	0	0	0	0	0	0	0	0	0	0	0	0	0	0	0	0	0	0	0	0	0	0				
	0	0	0			1	1	1	1	1	1	1	1	1	0	0	0	0	0	0	0	0	0	0	0	0	0	0	0	0	0	0	0	0	0	0	0	0					
	0	0	0			1	1	1	1	1	1	1	1	1	0	0	0	0	0	0	0	0	0	0	0	0	0	0	0	0	0	0	0	0	0	0	0	0					
	0	0	0			1	1	1	1	1	1	1	1	1	0	0	0	0	0	0	0	0	0	0	0	0	0	0	0	0	0	0	0	0	0	0	0	0					

Link

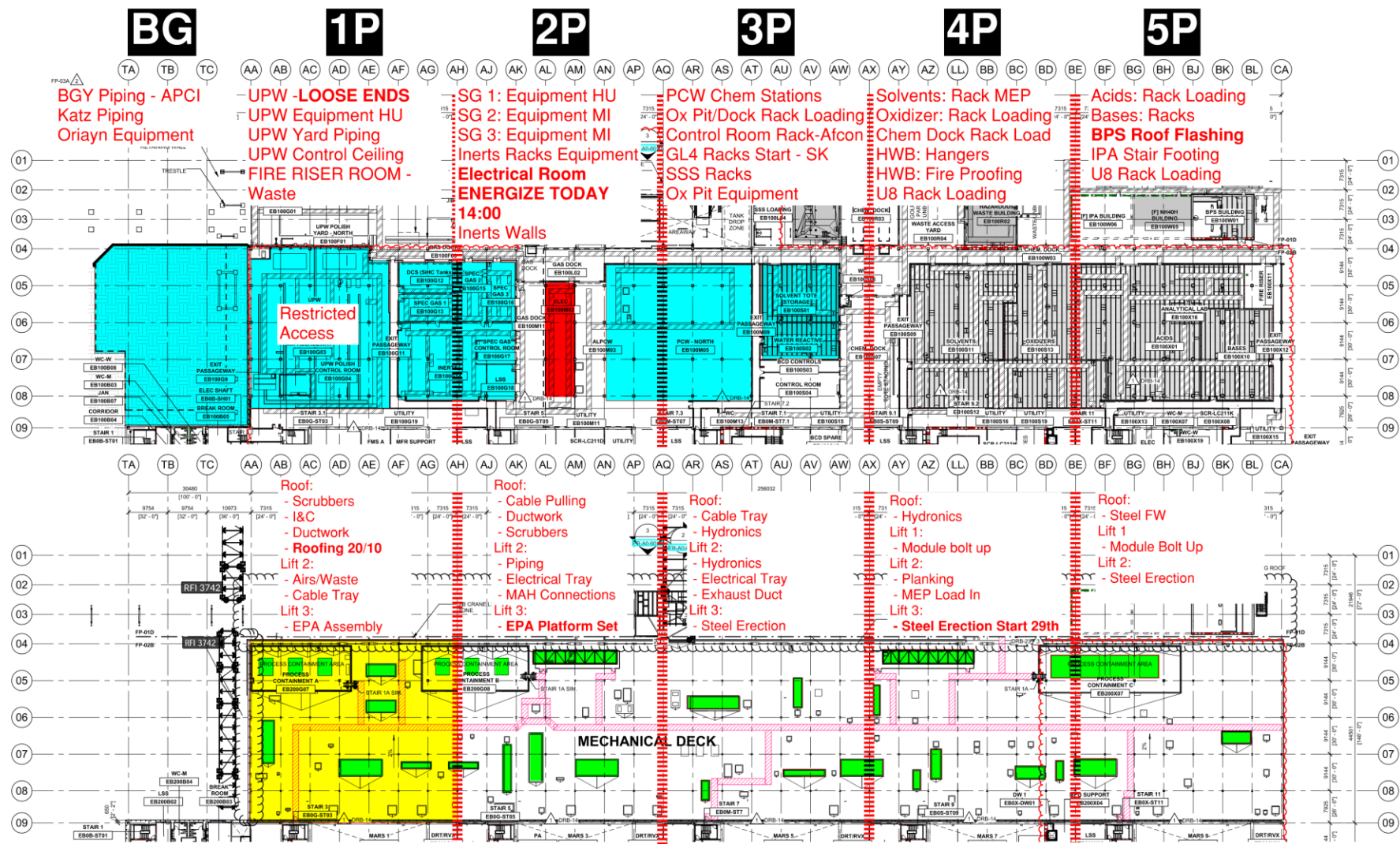
[illegible]



# PSSS.1

Utility Level  
1YA

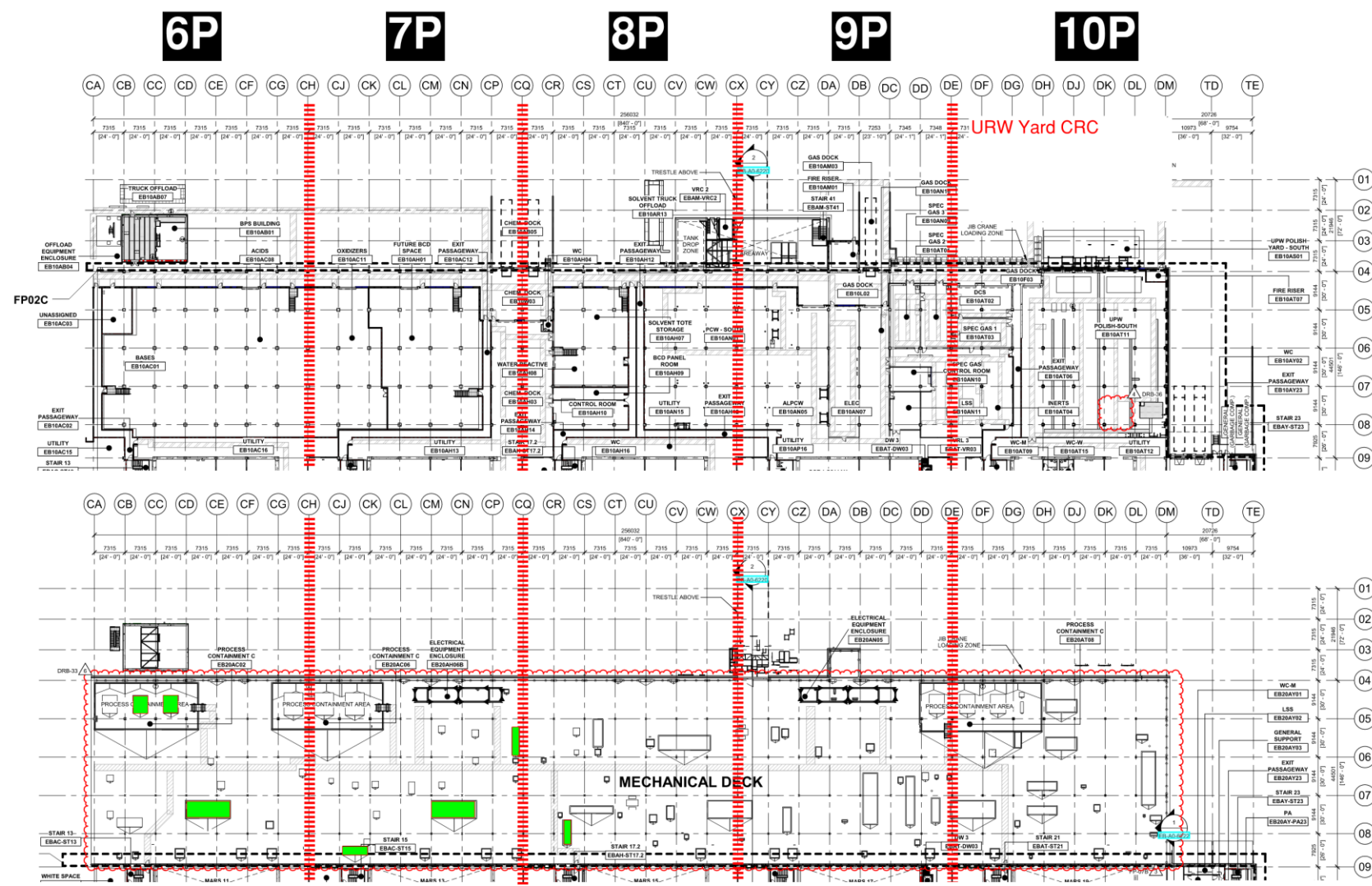
PSSS Roof  
2SA



# PSSS.2

Utility Level  
1YA

PSSS Roof  
2SA





PSSS

# 4P VFD Set

VFD Delivery 23/09

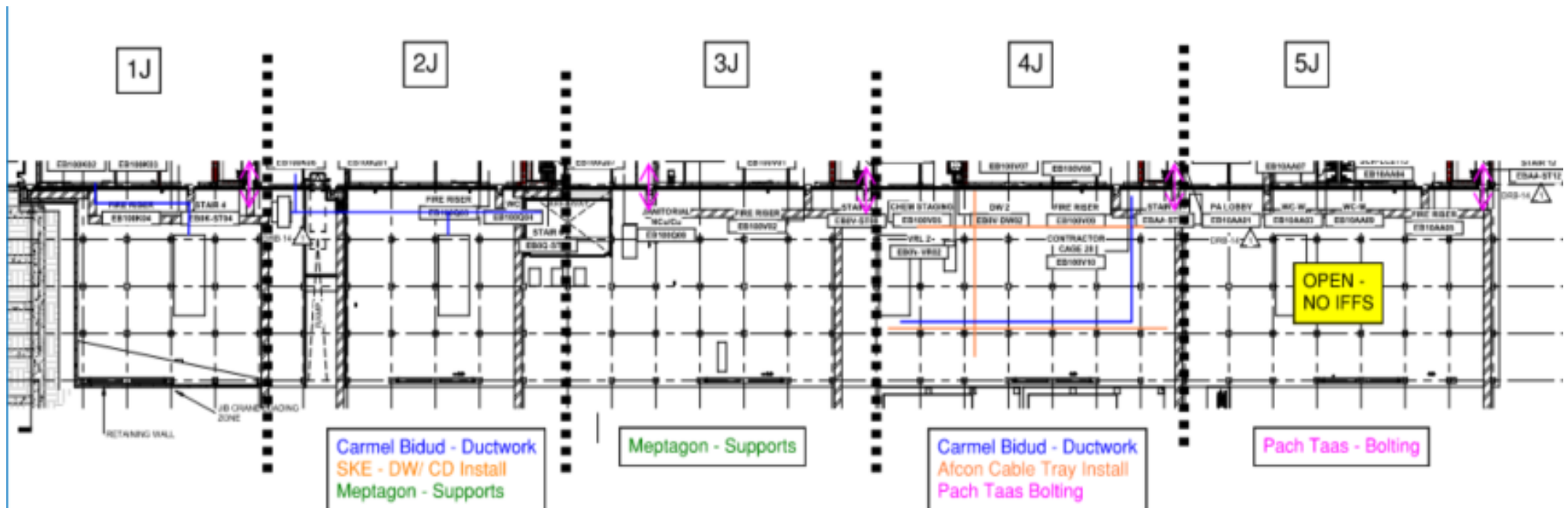
Hoist VFD – 24/09















**HOFFMAN CONSTRUCTION COMPANY**

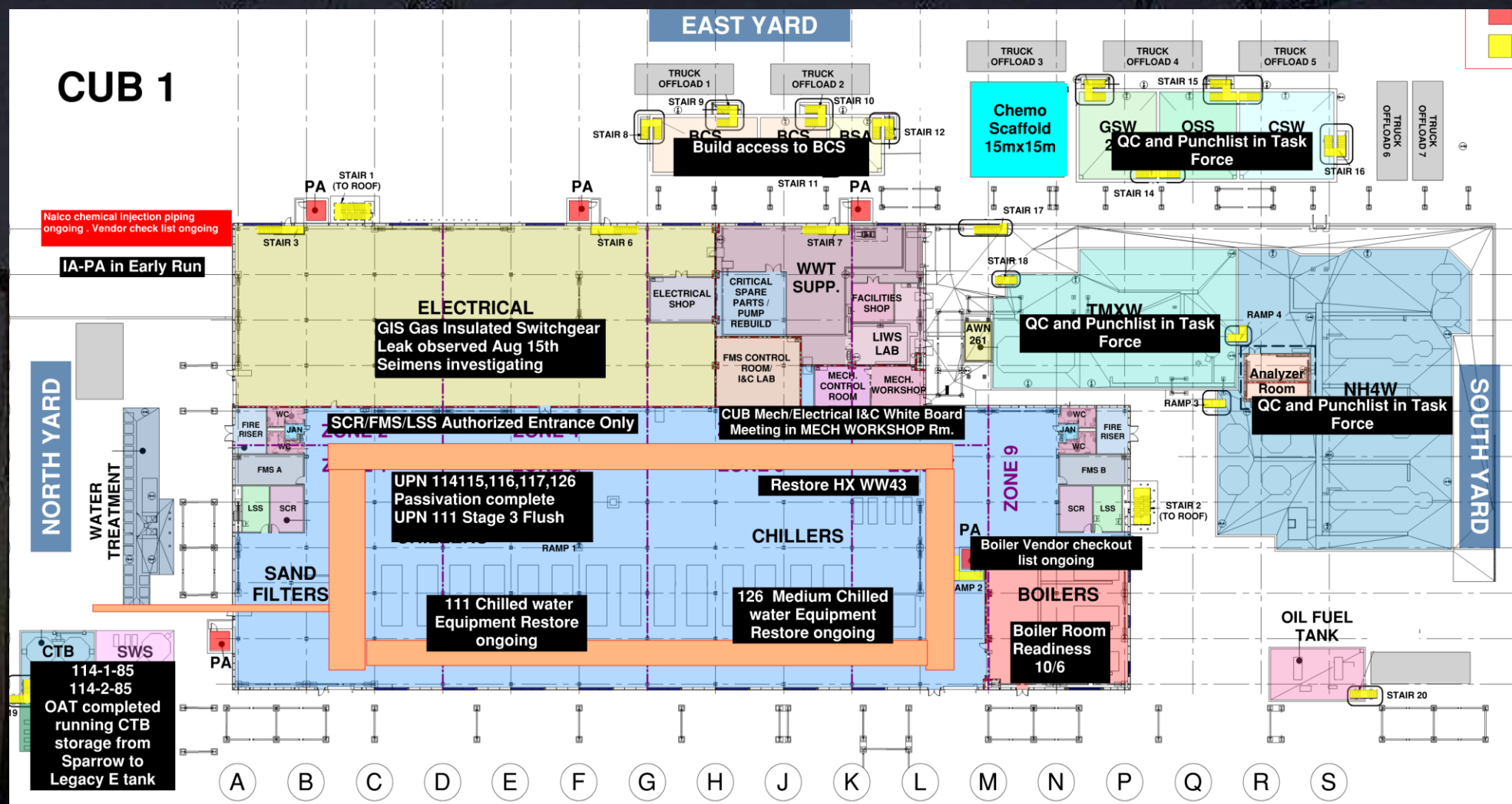


**New crane for 1J activities**

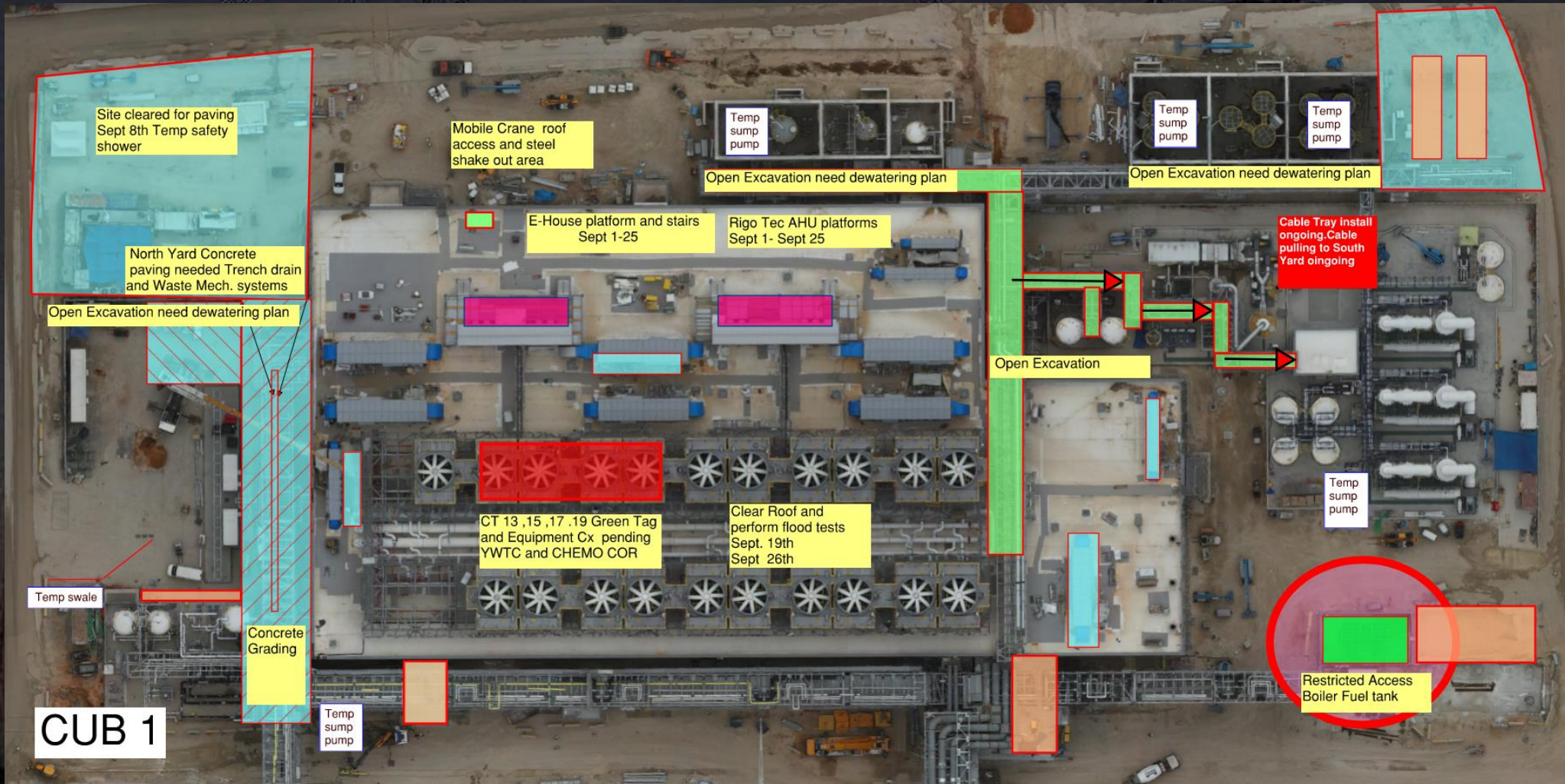
Walk Path

Truss Yard Fence

Unload Area for All Deliveries (via Crane)



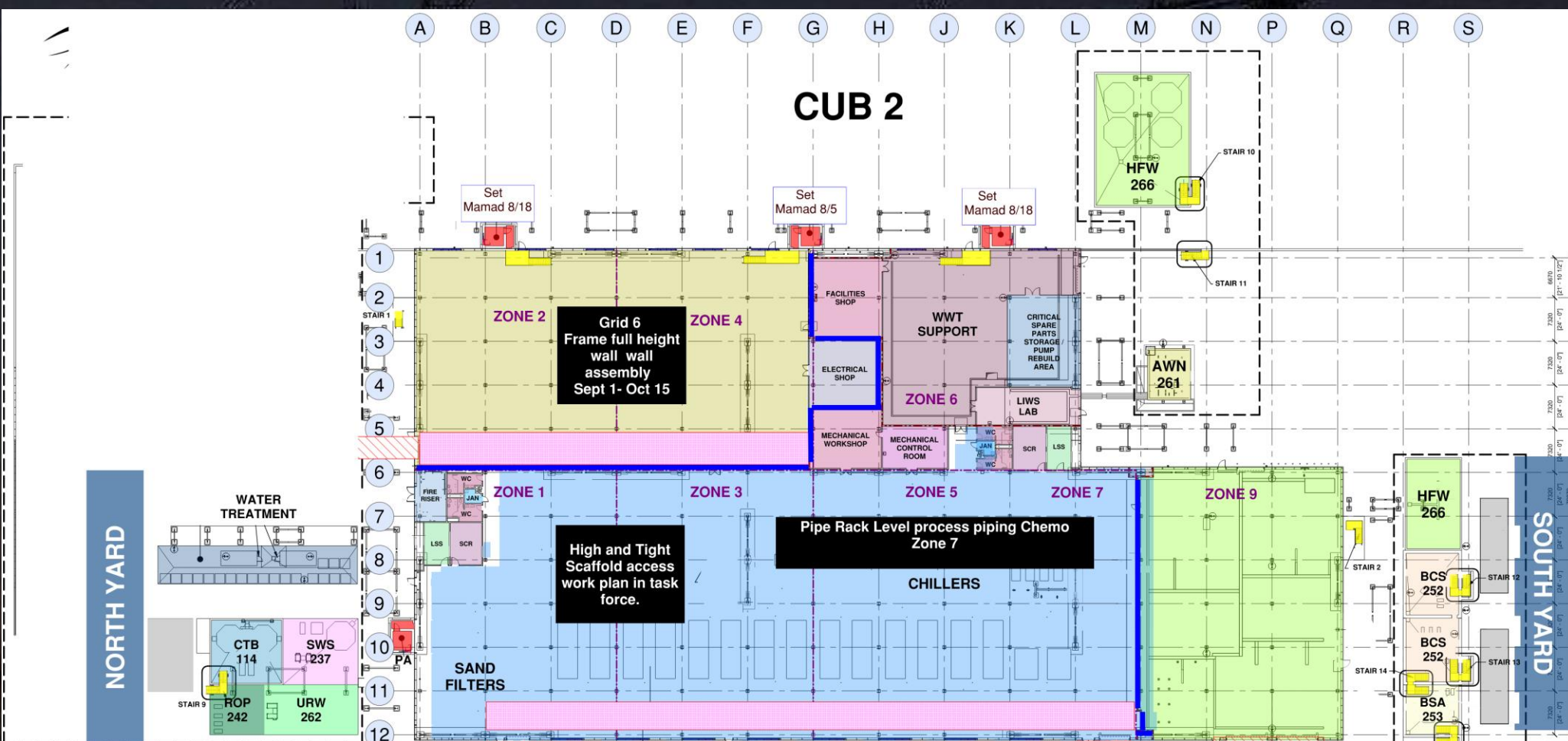




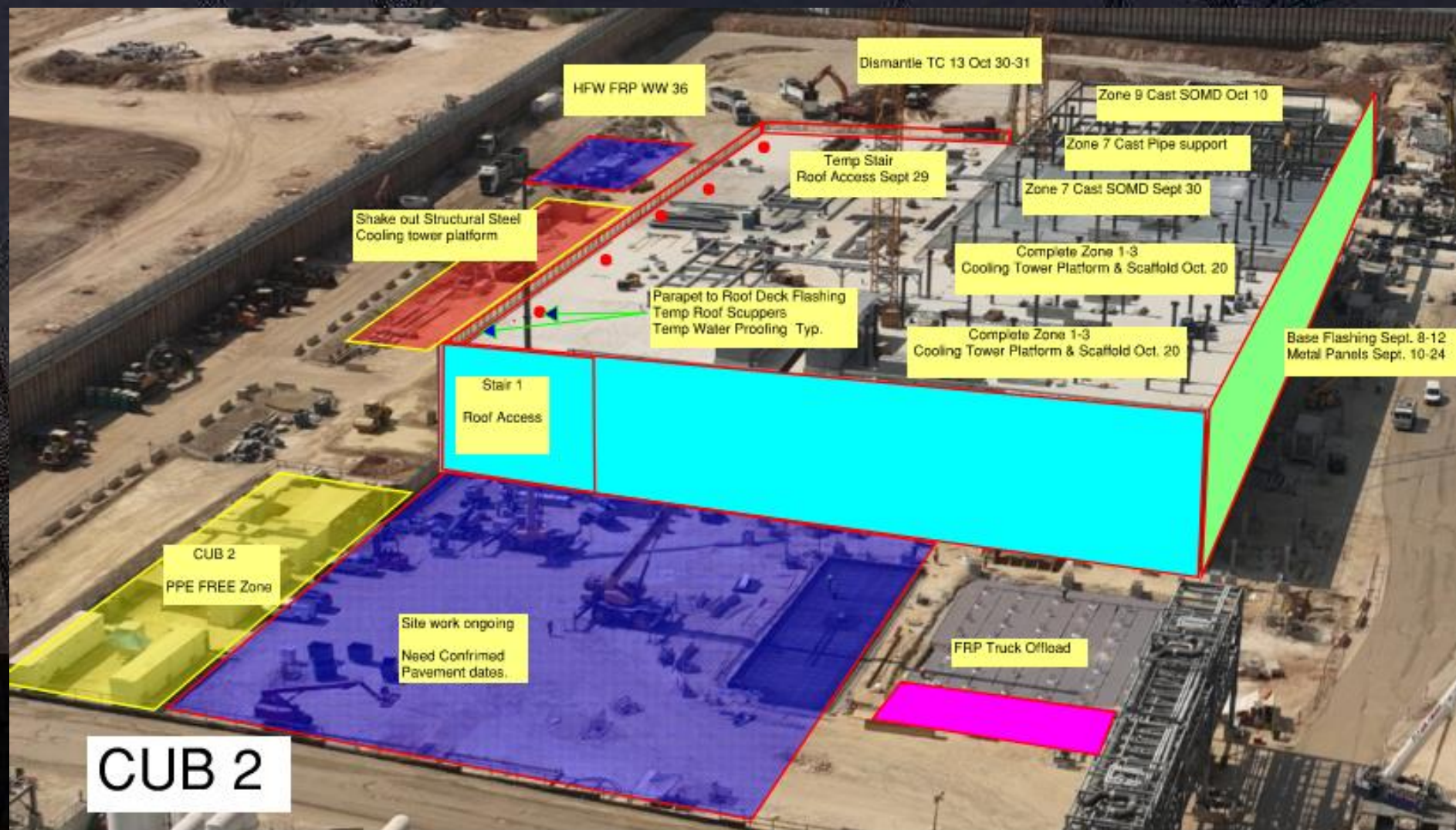




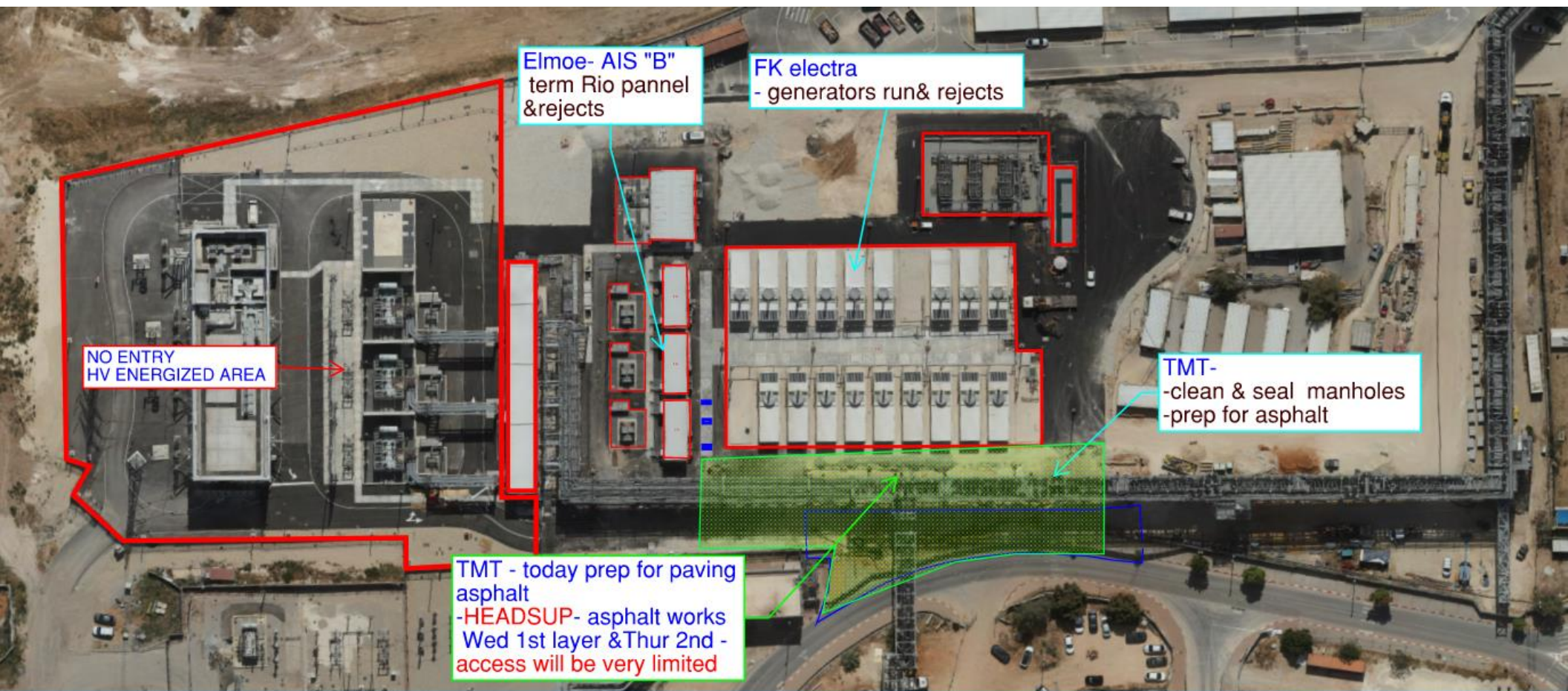
HOFFMAN CONSTRUCTION COMPANY











NO ENTRY  
HV ENERGIZED AREA

Elmoe- AIS "B"  
term Rio pannel  
& rejects

FK electra  
- generators run& rejects

TMT-  
-clean & seal manholes  
-prep for asphalt

TMT - today prep for paving  
asphalt  
-HEADSUP- asphalt works  
Wed 1st layer & Thur 2nd -  
access will be very limited









**HOFFMAN CONSTRUCTION COMPANY**



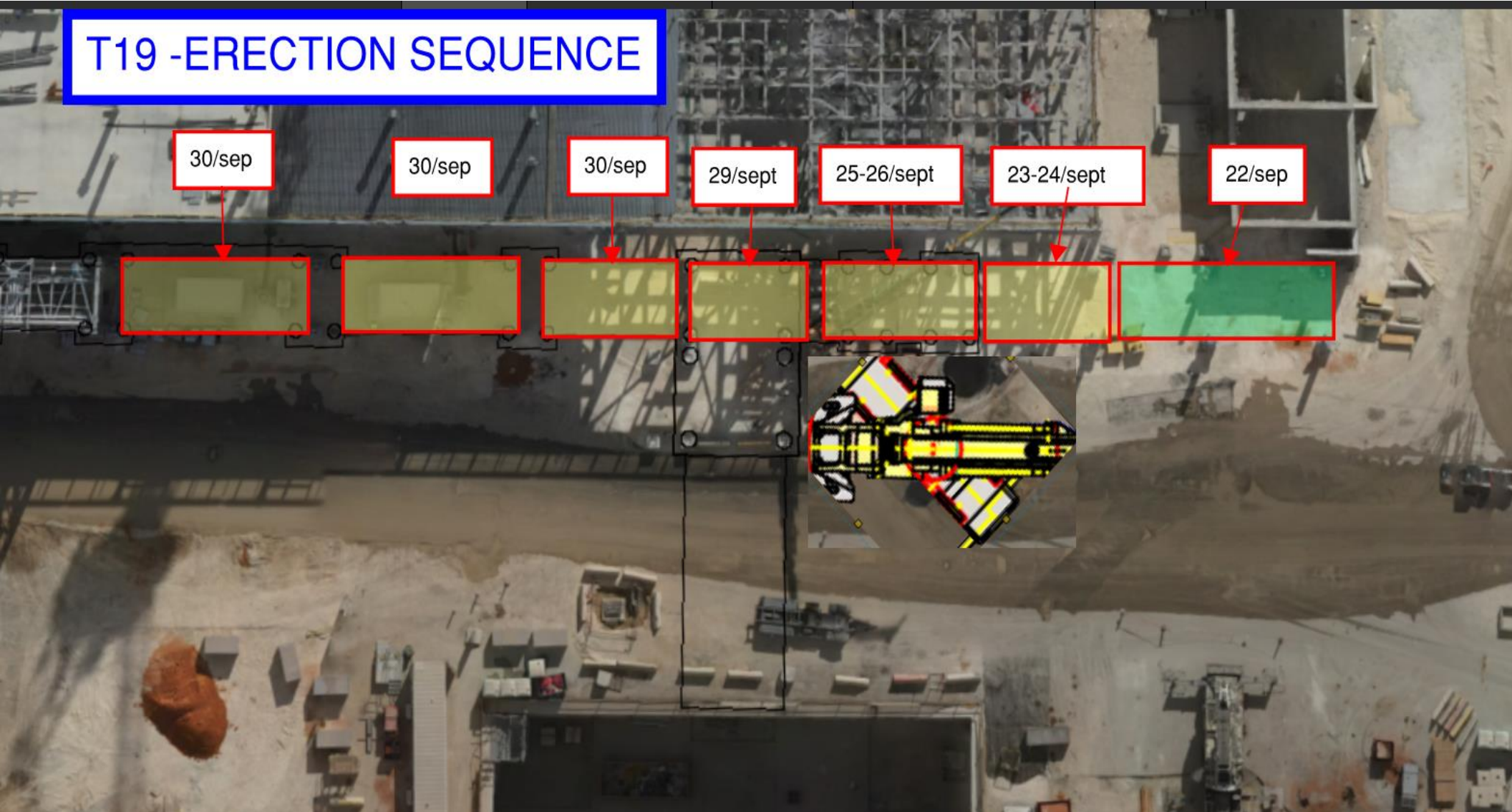
**HOFFMAN**  
Sparrow  

**NO PARKING OR MATERIAL STORAGE**

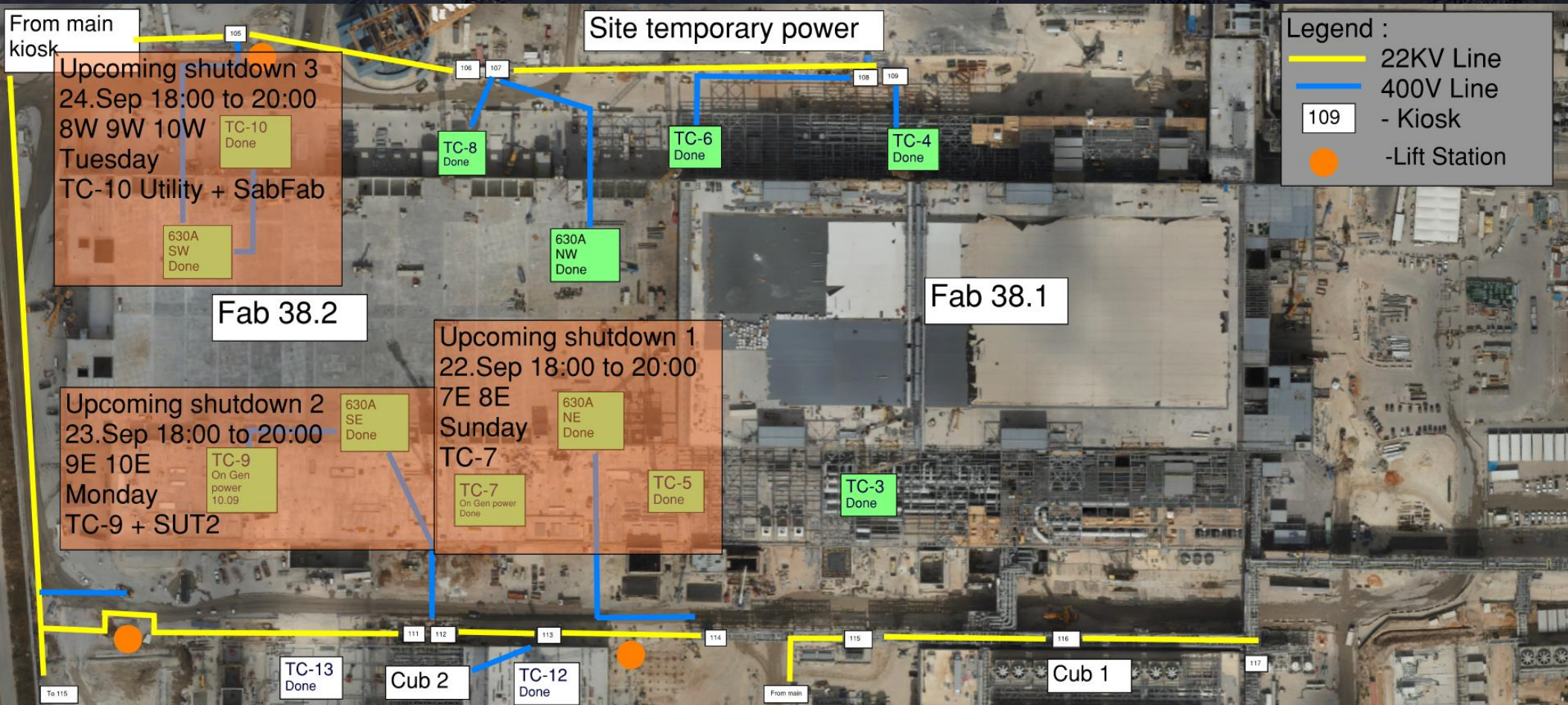
**BSGS**



## T19 -ERECTION SEQUENCE









# Daily Coordination Meeting

Site Logistics  
North Gate B







# Daily Coordination Meeting

## Site Logistics

### North

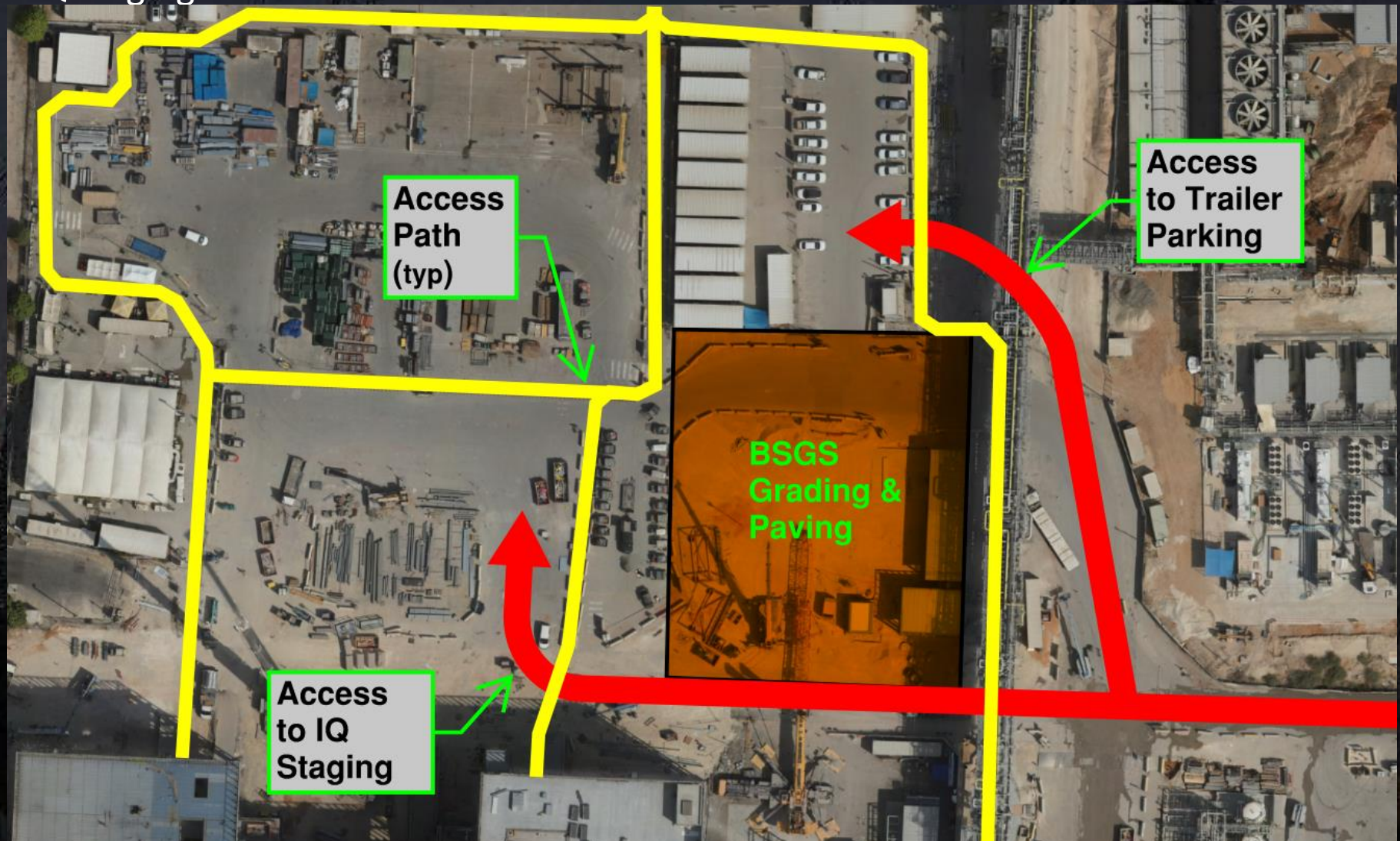




# Daily Coordination Meeting

## Site Logistics

### North IQ Staging Access

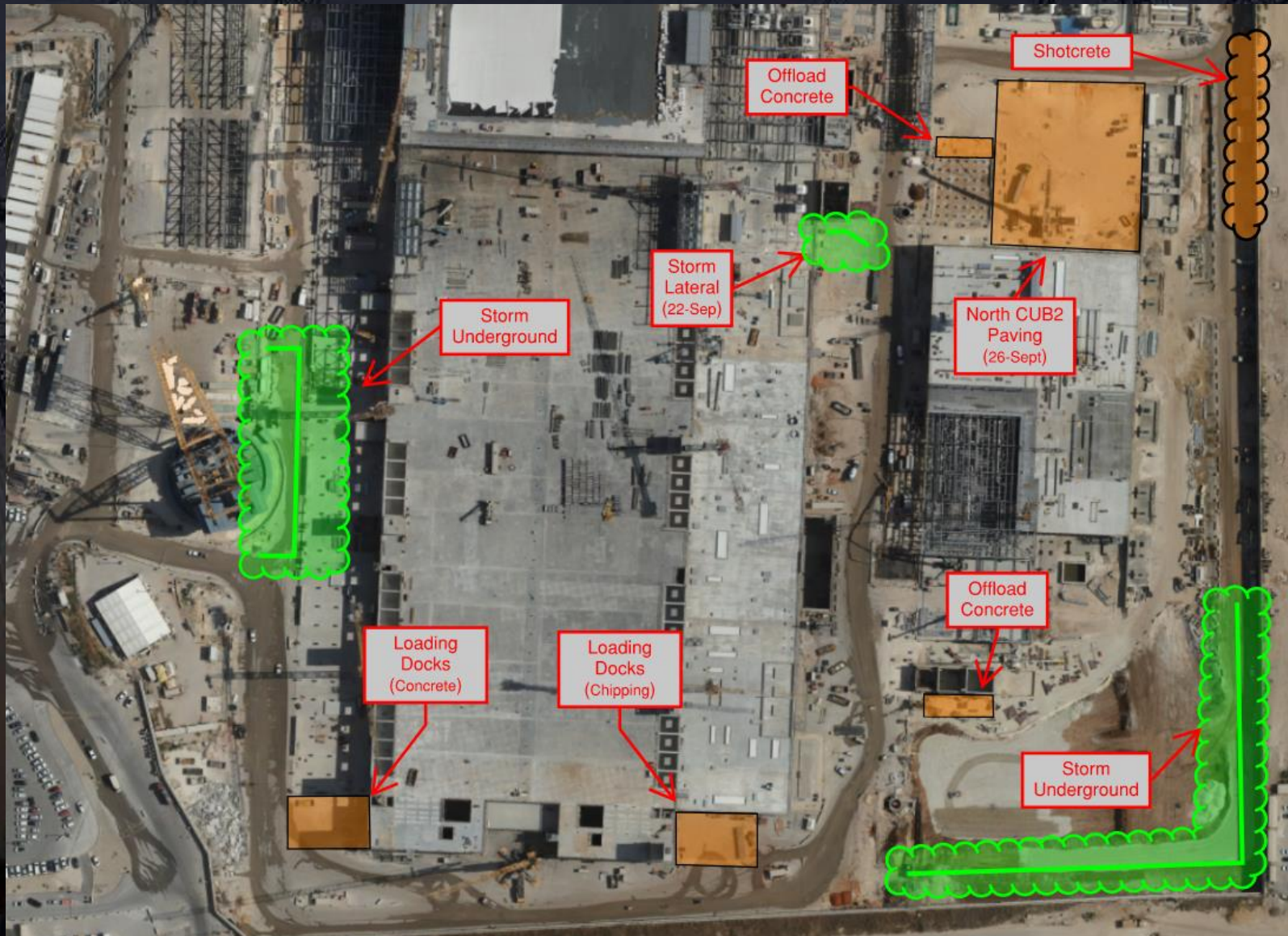




# Daily Coordination Meeting

## Site Logistics

### South





## Accessing Work at Heights

- All contractors performing work at heights need a plan for their workers on how they will access that work. This is vital when the work cannot be accessed with just an MEWP.
- We continue to have workers put themselves in danger because they are not given a plan for safe access of their work.
- Workers need a safe work platform that is wide enough (46 cm), and can support their weight with a safety factor. This excludes climbing on racks, the mid or top rail of MEWPs, or from using a 2x4, or anything similar.
- Remember, if you are asking your workers to tie off outside of an MEWP, you need a fall protection plan.

# Daily Coordination Meeting



14:00 Sign In