

Daily Coordination Meeting



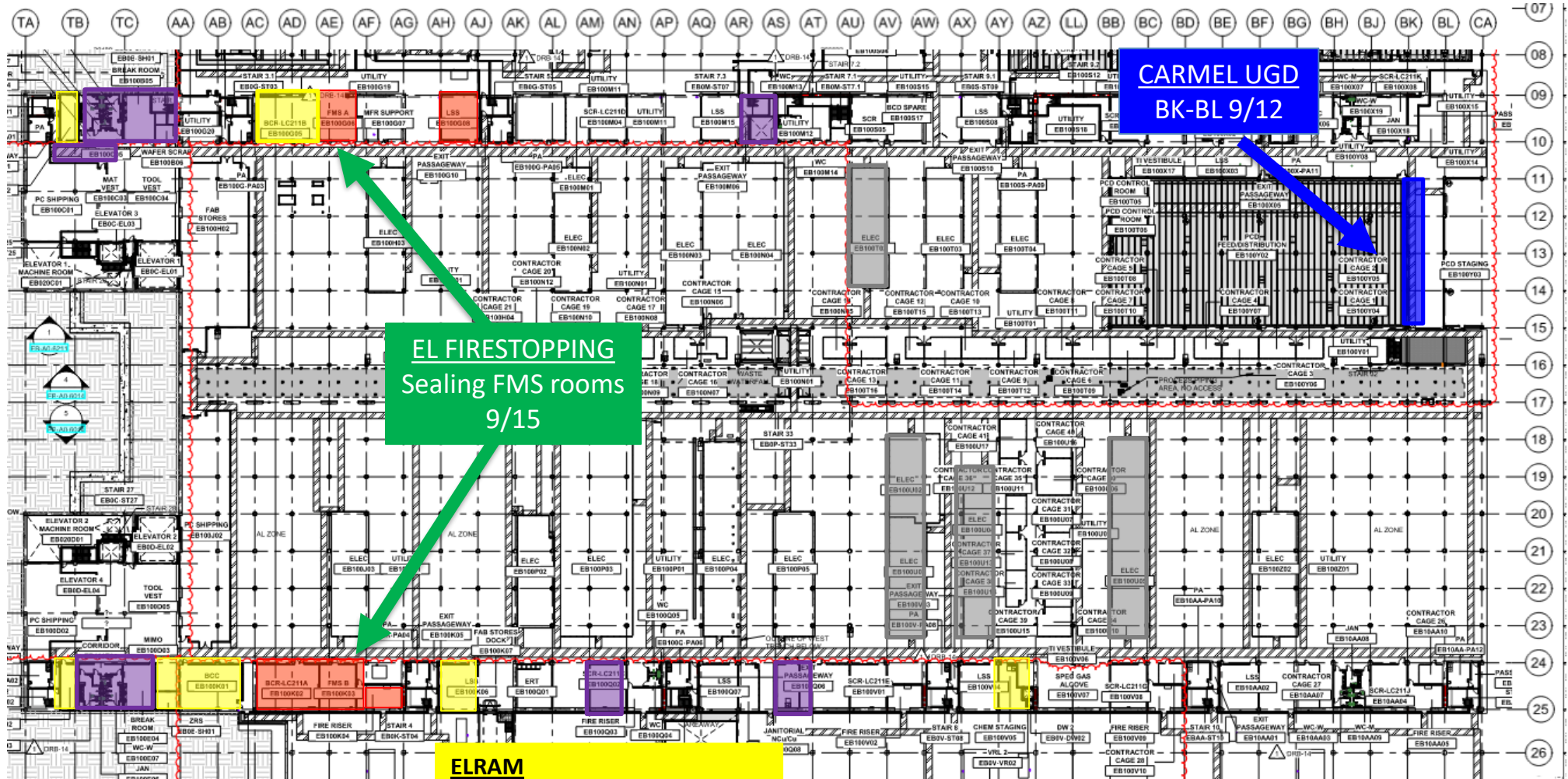
14:00 Sign In

Daily Coordination Meeting

General Topics:

- Accountability

UTILITY LEVEL MOD1



BELFOR

TTNE - Corridor + Toilets + Break R
Stairs 7.3
Wafer scrap
TTNW - Toilets + Break R
SCR 2W
Exit pass 3W

ELRAM

Ongoing
LSS TTNW + TTNE
BCR 1E
LSS 2W
Chem staging
BACKING
BCC
BCR 1E+1W
LSS's

MEP+Electrical

Ready for re-install
FMS A 1E
FMS B 1W
Fire Risers 1W
BCC - **Outside wall**
Inside N/S/E walls



MEPTAGON
10W
9/17

MALHIMIM

MEPTAGON

10W

9/17

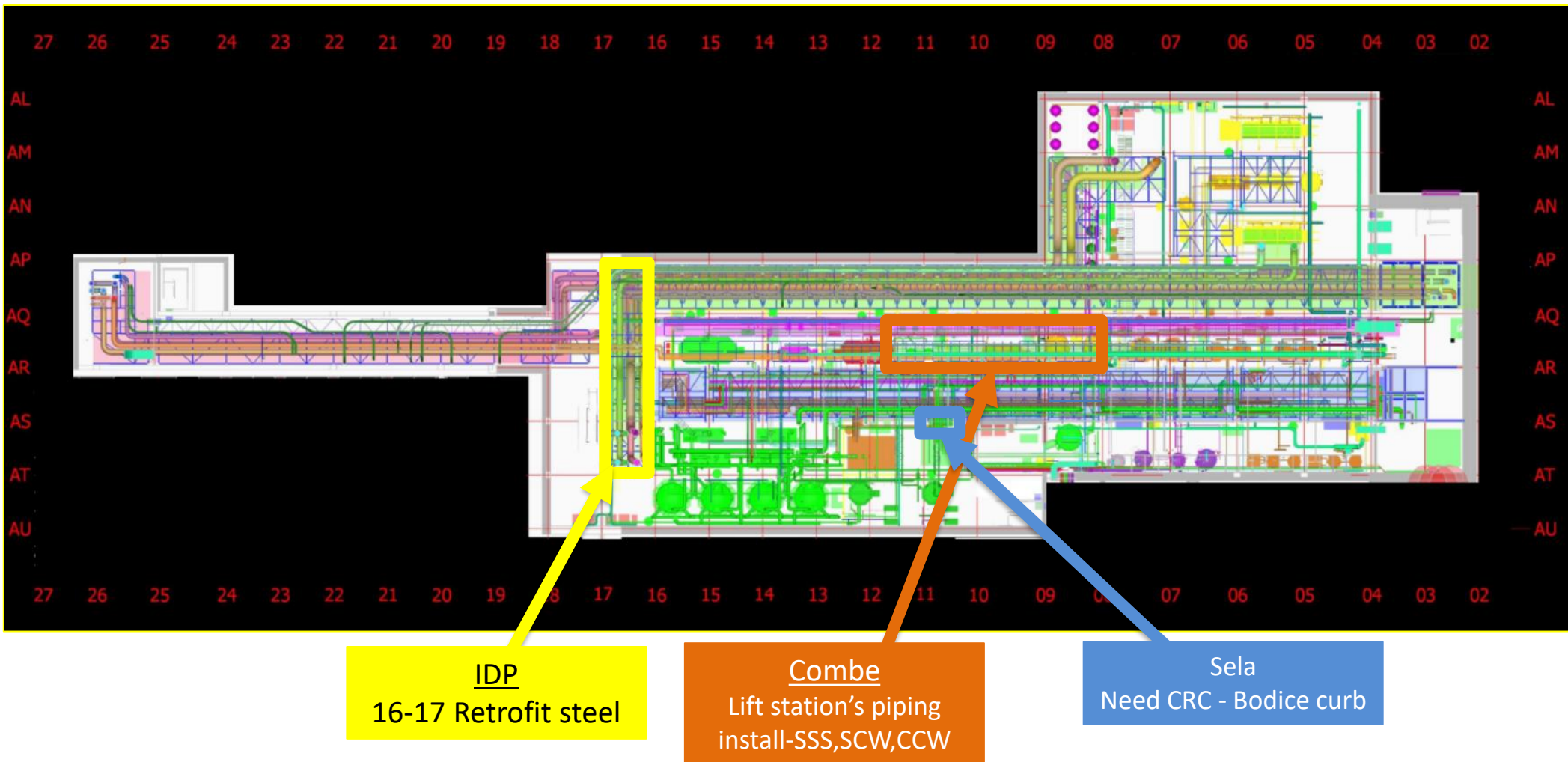
MALHIMIM

10W

Sprinklers install
9/17

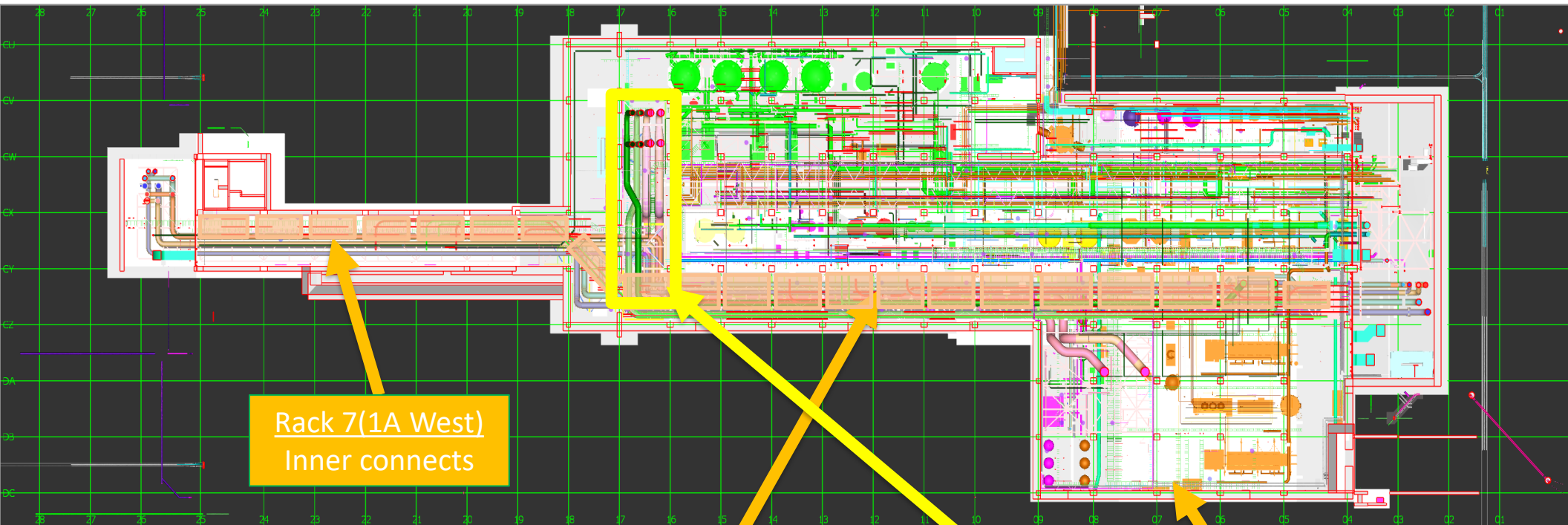


SUT 38.1 LEVEL





SUT 38.2 LEVEL



Rack 7(1A West)
Inner connects

CRW
H&T

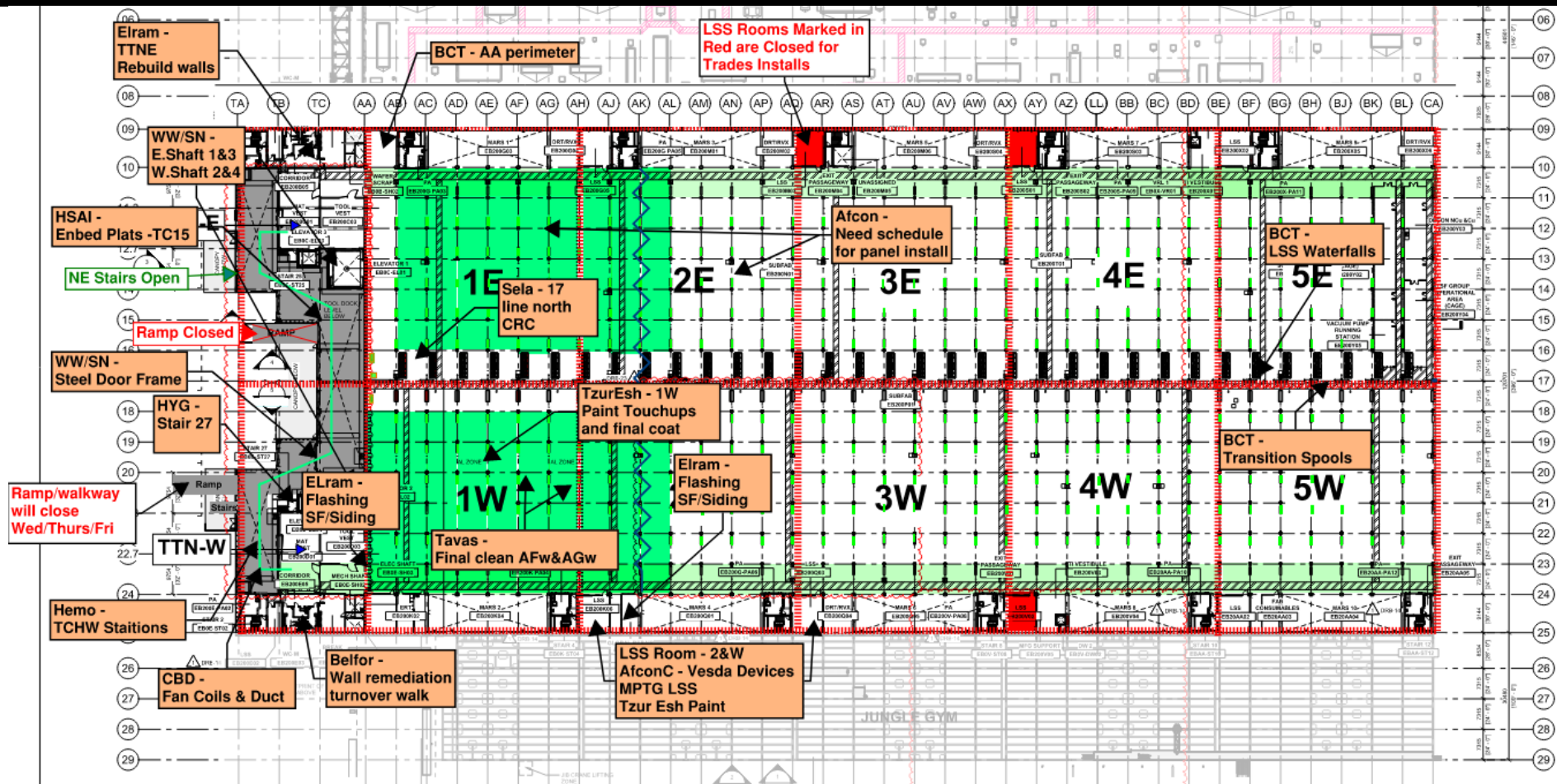
1A Rack
Inner connects

16-17 line
Upper bed lift
9/9

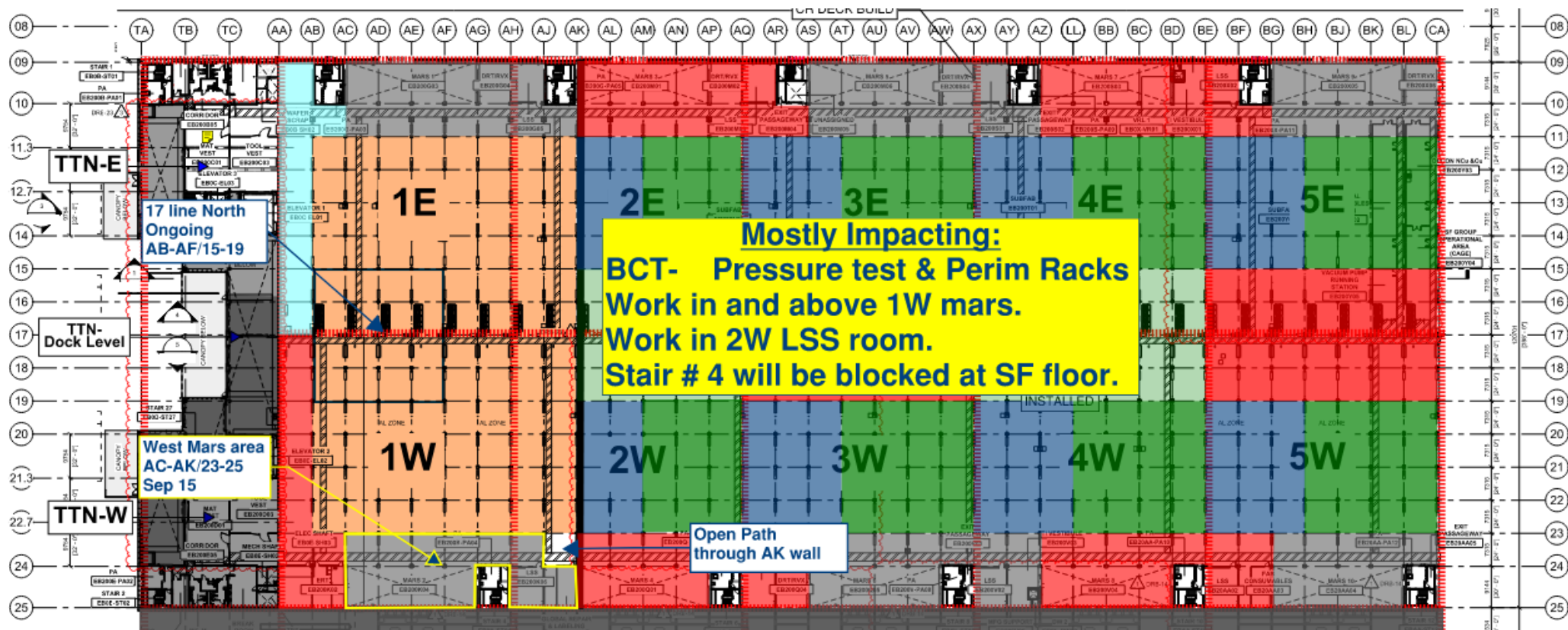
8 Rack
Pending SDC

Vesda
H&T
Not actively installing

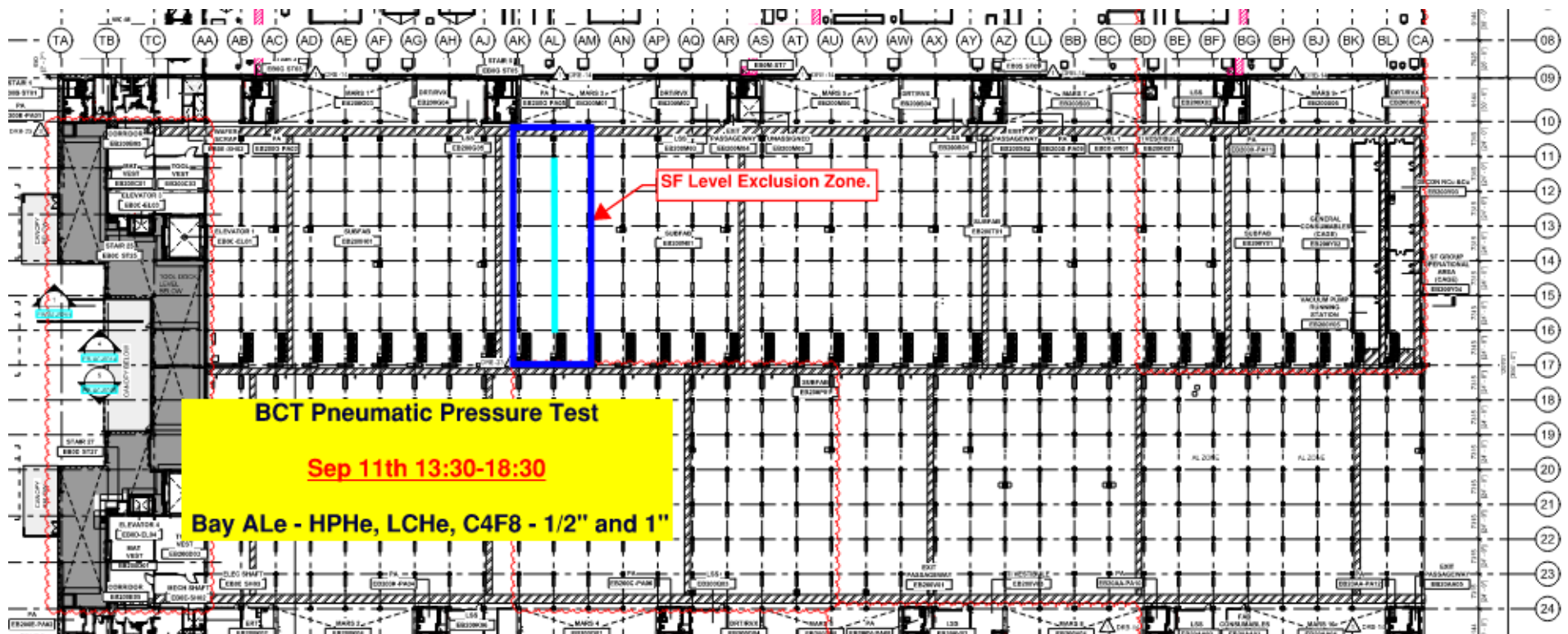
SUBFAB BUILDOUT MOD 1

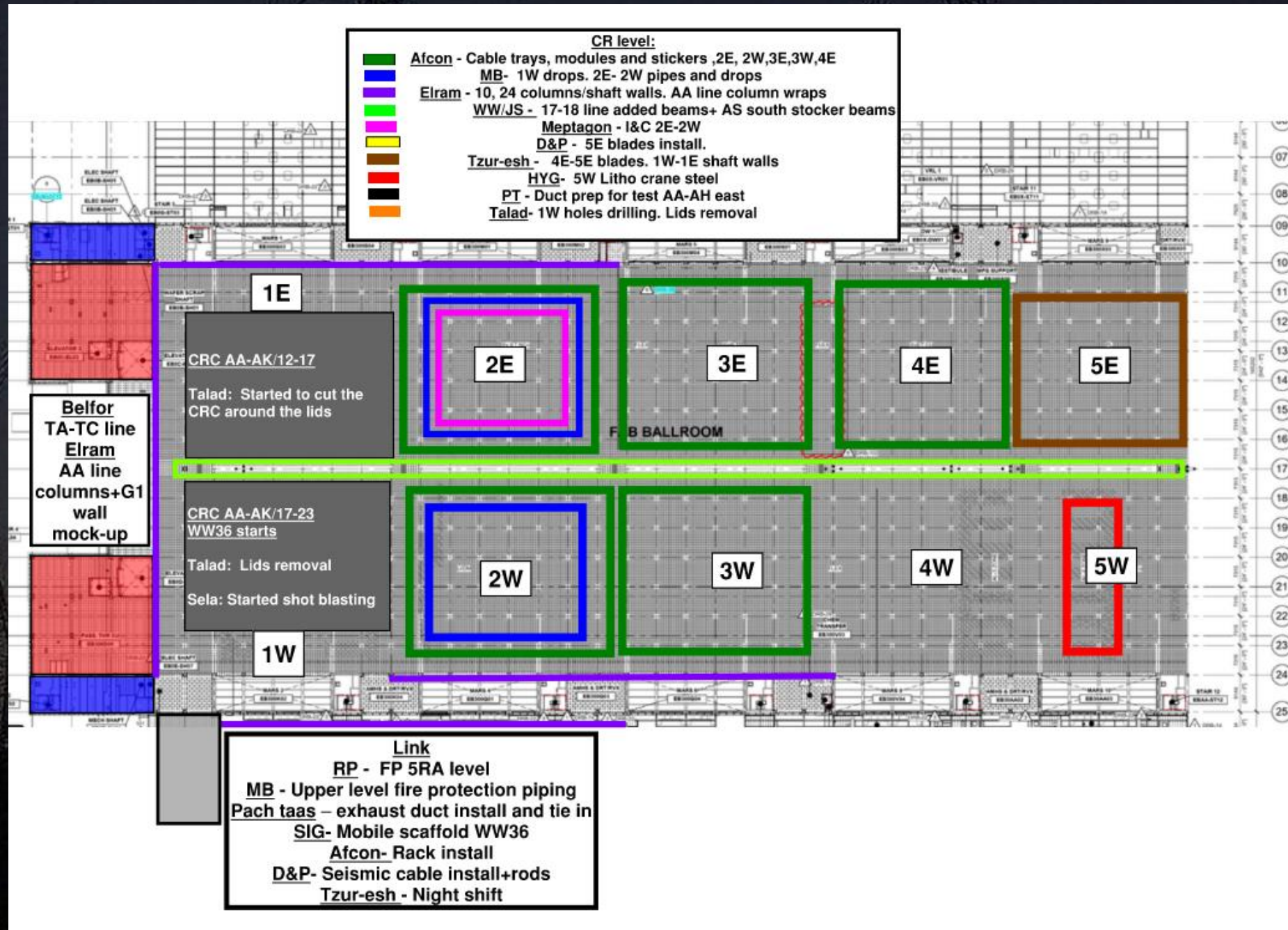


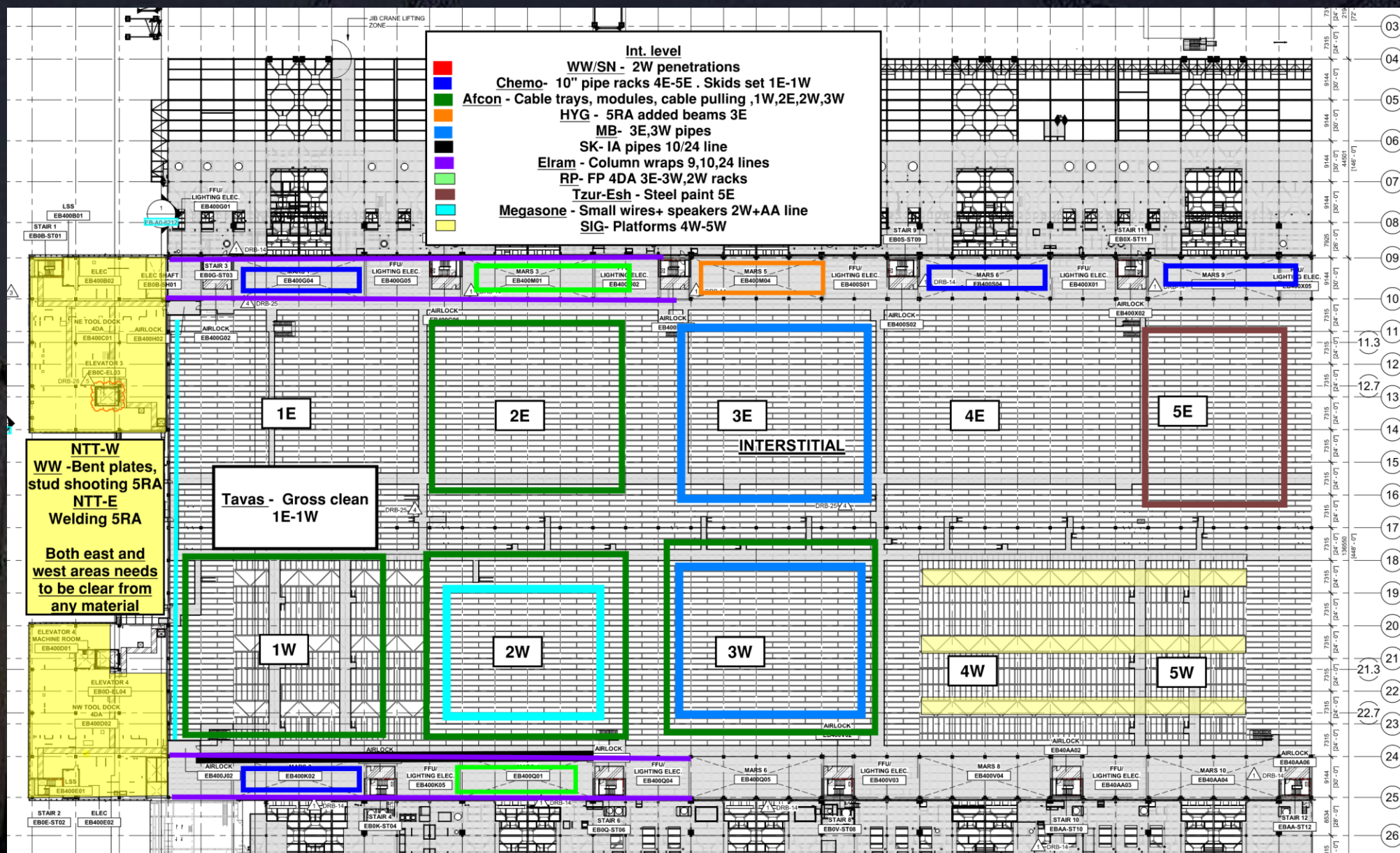
SUBFAB CRC TOPCOAT

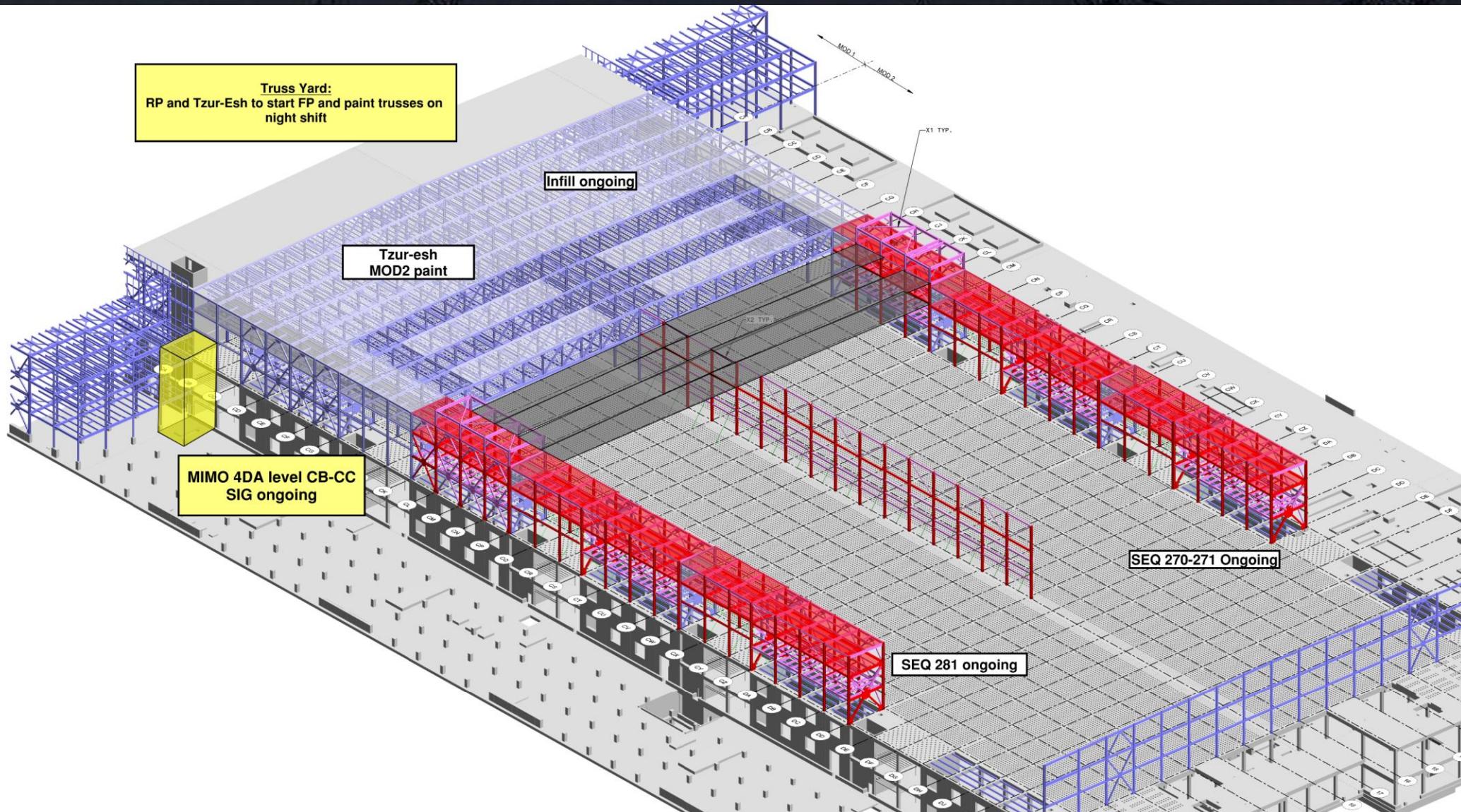


SUBFUB PRESSURE TEST EXCLUSION ZONES











HOFFMAN CONSTRUCTION COMPANY





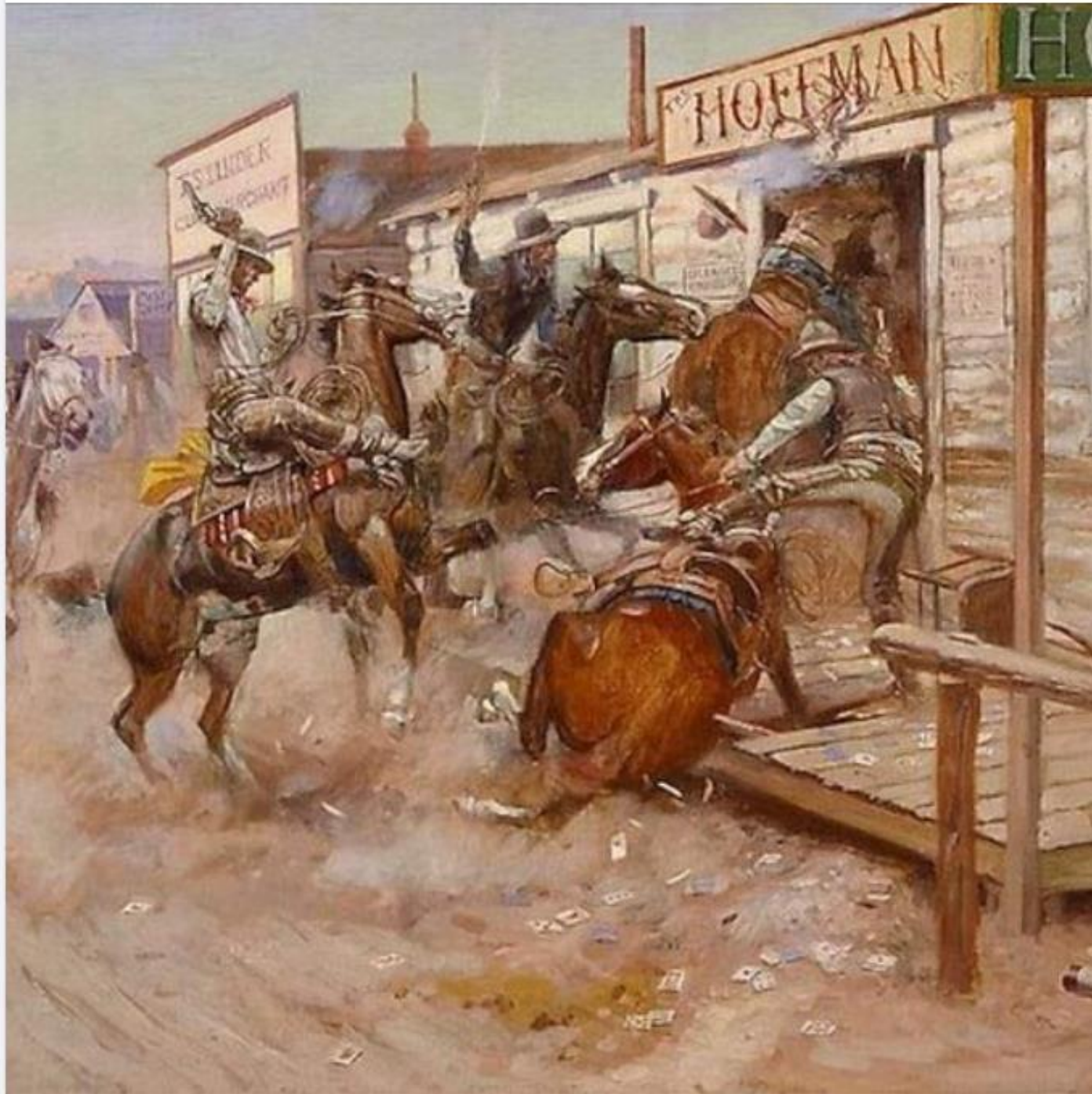
C. M. Russell, Cowboy Artist

Jeffrey Rennie · 18 hours ago ·



"In Without Knocking" by Charles M Russell

Charles (CM) Russell, the "cowboy artist"







Coroplast® Sheet

Coroplast® is made of polypropylene material that is tougher than corrugated fiberboard and lighter than extruded plastic sheet. It is electrostatically double treated by "Corona Discharge" on both sides to allow specifically formulated inks and adhesives to adhere. More colors available by special order, contact us for quote.

- Material of choice for today's screen printing industry
- Ideal for indoor & outdoor applications
- Waterproof & stain-resistant
- Sign stakes are 1/4" diameter zinc plated wire
- Cut tolerance $\pm 1/4$ "
- Sheets sold 10 per package only

TireSocks® – Non-Marking Tire Covers for Interior Construction

Product Resources

[Product Gallery](#)[Product Flyer](#)[Measures Guide](#)[Install Sheet](#)[Install Video](#)[Spec Sheet](#)[Product Search](#)[ORDER NOW](#)

Search by Part Number

TireSocks®



Equipment used for interior construction like boom lifts, scissor lifts, and warehouse forklifts often result in scuff marks and scratches on newly poured slabs and other finished flooring. Even equipment with non-marking tires can leave behind unsightly marks and residue. Clean up for this type of damage is time-consuming, tedious, and costly, typically causing major project delays and costly repairs. TireSocks® are the durable non-marking tire covers you need to protect your job site.

Also known as tire protectors, tire wraps or tire wheel covers, TireSocks provide surface protection that moves with your machines. They are easy to install, won't slip off tires, and self-center as you drive, making them the ideal tire covers for indoor construction projects. Protect your floor and bottom line with TireSocks.

Home / Cleaning, Sterilizing Supplies / Nilfisk GM80P Dry Vacuum Cleaner (9L, 300 x 390 x 410mm)



参考画像 (GM80P)

Nilfisk GM80P Dry Vacuum Cleaner (9L, 300 x 390 x 410mm)

Manufacturer: Nilfisk

Model: GM80P

Product code
111-63474

Price 1,707.23 USD

[Add to cart](#)[Buy now](#)[Request a quote](#)

*This is **standard price**, please click "**Request a quote**" to see the actual price.

*You can't find the product you need, please send us the picture/specifications/model/product code and quantity you need to email: info@qtetech.com.vn. We will find it for you.



5 Inch Casters Set of 4 Heavy Duty - Caster Wheels, CLOATFET Locking Casters, Swivel Casters with Brake (Top Plate), Double Ball Bearing Non Marking Castor Wheels for Cart Furniture Workbench

★★★★★ 754

600+ bought in past month

\$19⁹⁸

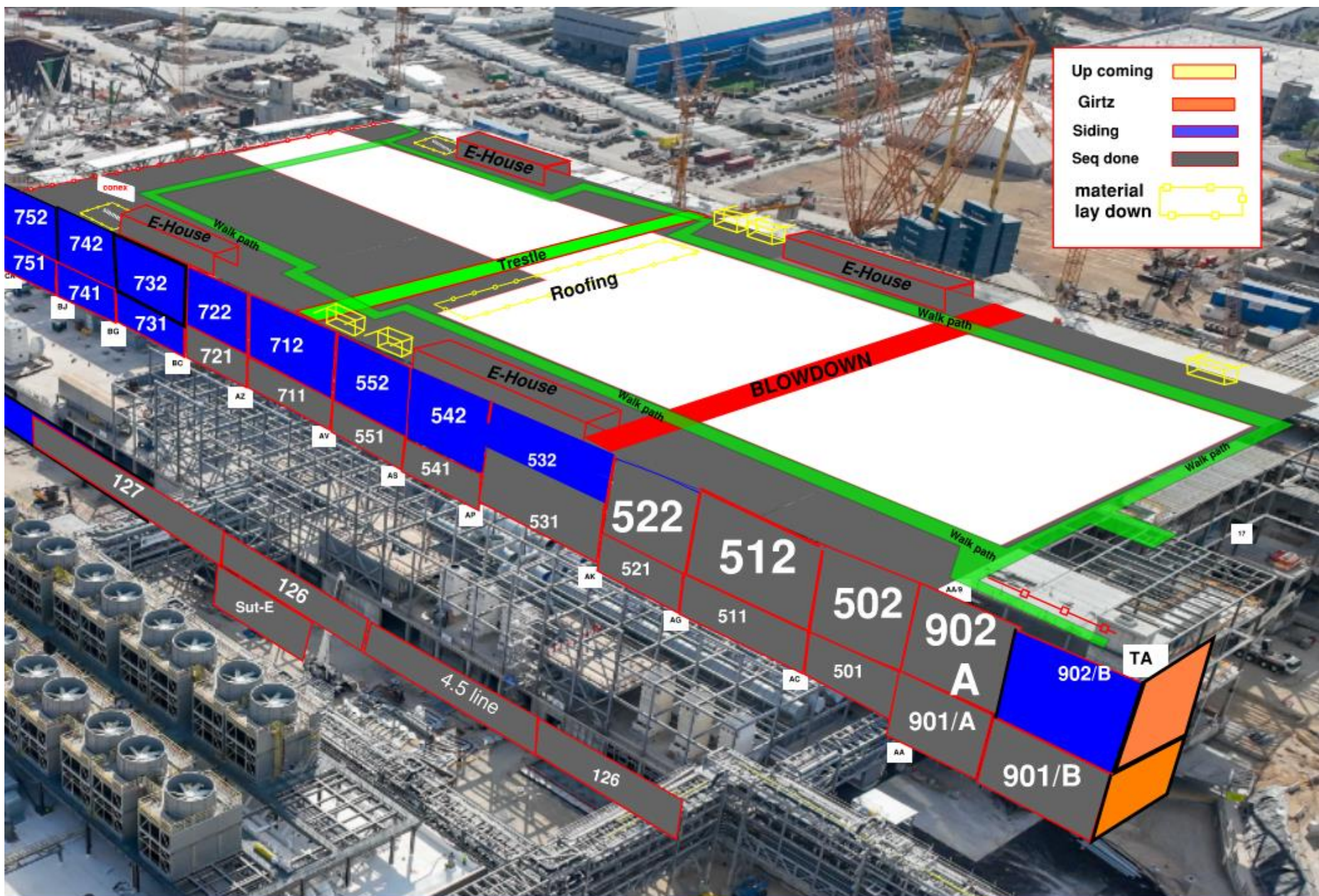
✓prime Same-Day

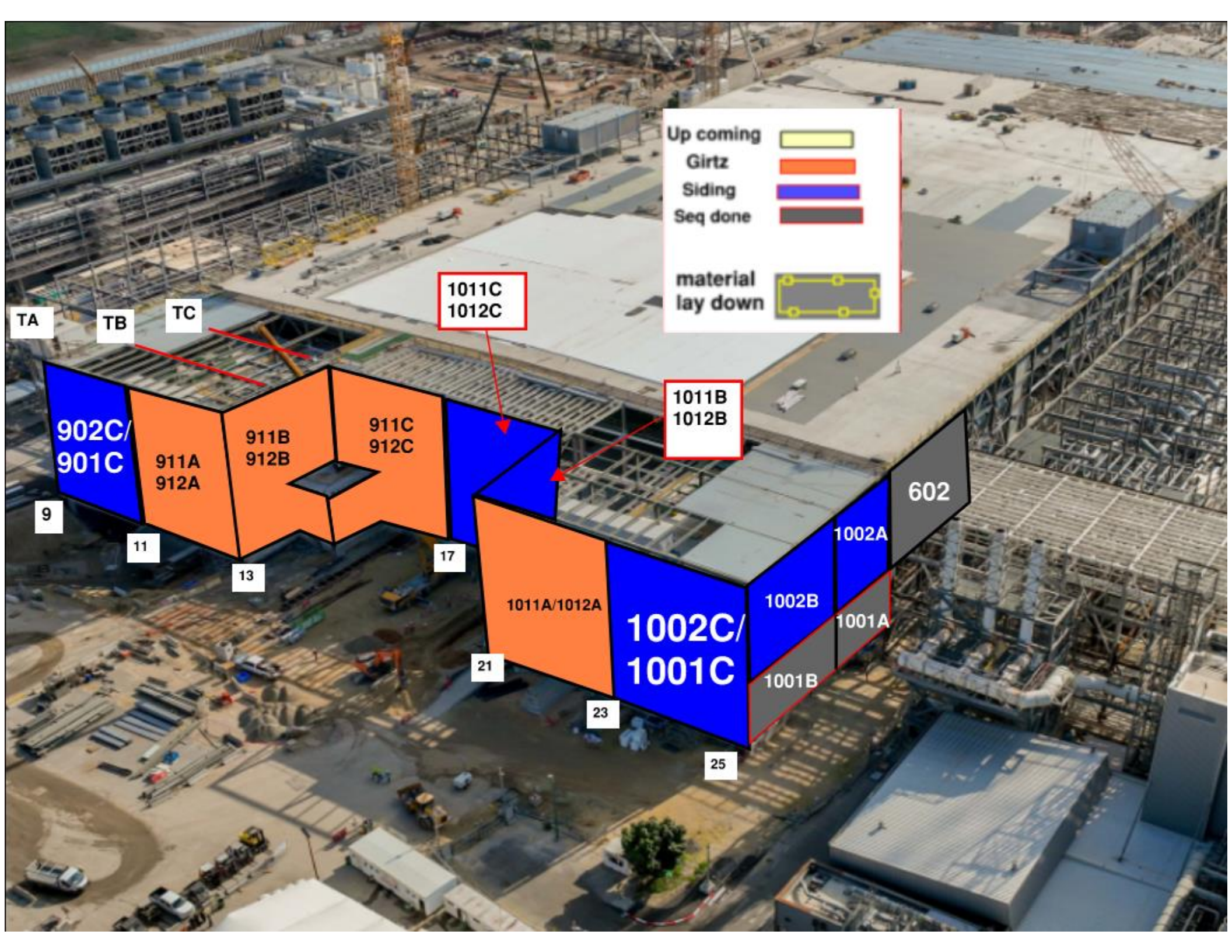
FREE delivery **Today 2 PM - 6 PM** on \$25 of qualifying items

[Add to cart](#)

14. All material entering the Clean Zone shall be cleaned after the start of Protocol Level 3. Cleaning shall consist of wiping down with the designated wipes every surface using unidirectional strokes. All surfaces, including surfaces that may appear clean, shall be wiped.
15. At the start of Protocol Level 3, all materials, tools, tool boxes, and construction equipment shall be in a like-new condition and show no signs of surface damage, paint chipping, or rust. Restricted materials should not be brought inside the cleanroom.
16. At the start of Protocol Level 3, items exhibiting signs of grease, rust, or other visible contamination shall not enter the Clean Zone. Any item with suspected contamination shall be brought to the attention of the Protocol Manager, who shall decide its disposition.

PROTOCOL LEVEL	STATIC PARTICLE LIMIT	DYNAMIC PARTICLE LIMIT
1	<1M	No Limit
2	<100k	<1M
3	<10k after MUA/RAH blowdown <5k prior to raised access floor or grid install	<100k after MUA/RAH blowdown <50k prior to raised access floor or grid install
4	<1k prior to HEPA install Post-HEPA; <10 Bay; <1000 Chase Follow Protocol Level 5 requirements during Certification particle data collection	<10k prior to HEPA install Post-HEPA; <100 Bay; <10k Chase Follow Protocol Level 5 requirements during Certification particle data collection
OP Ready	Dynamic particle limits drop to match the Static particle limit during certification and fab operations for all Protocol Levels. Fab level particles become more tightly controlled during fab operations. See 45_43_10_01 for particle count requirements.	





Up coming

Girtz

Siding

Seq done

material lay down

TA

TB

TC

1011C
1012C

1011B
1012B

902C/
901C

911A
912A

911B
912B

911C
912C

9

11

13

17

21

23

25

1011A/1012A

1002C/
1001C

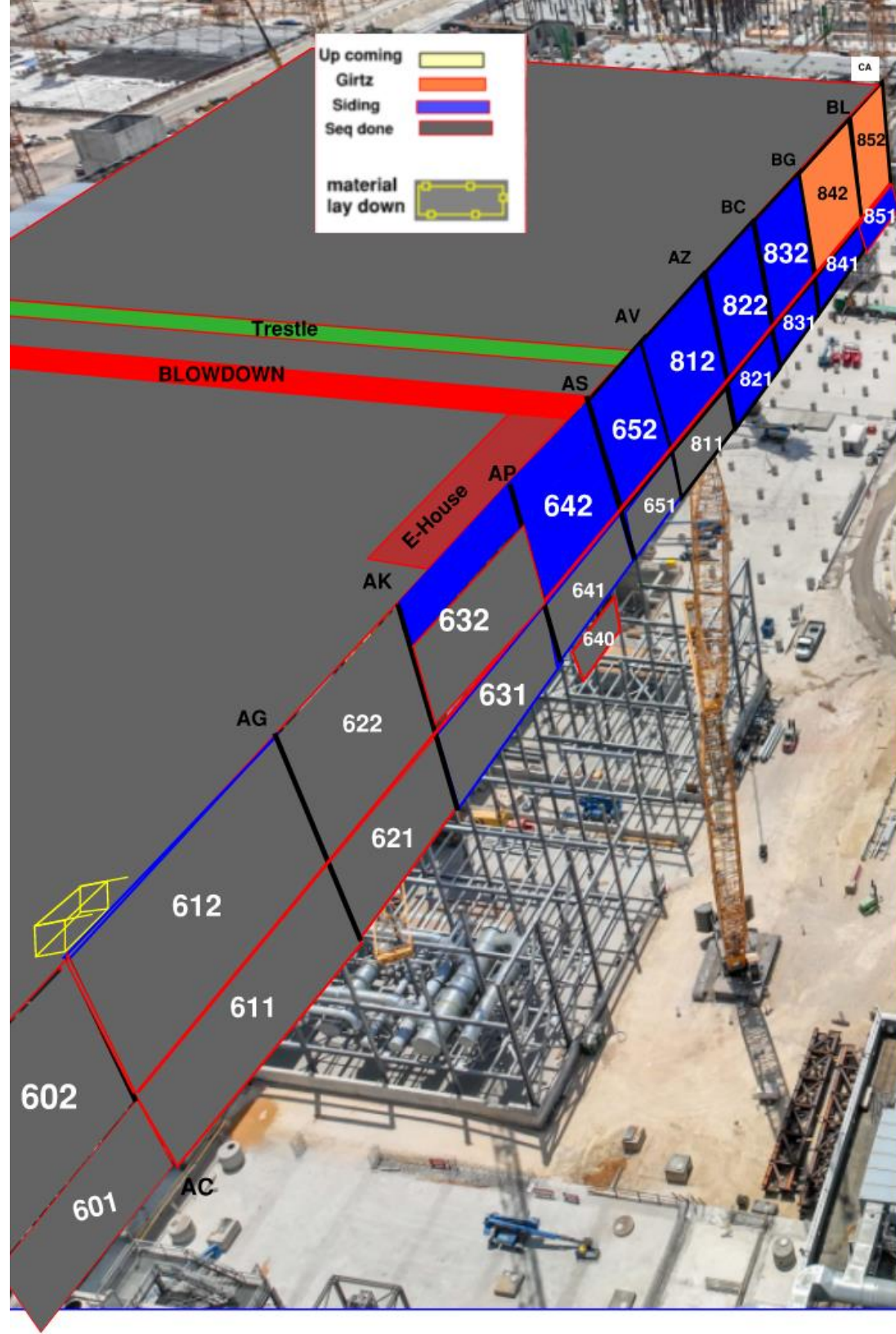
1002A

1002B

1001A

1001B

602



Siding - East FAB - PSSS

BLOWDOWN 30%

[illegible]

Siding - West FAB - JYG

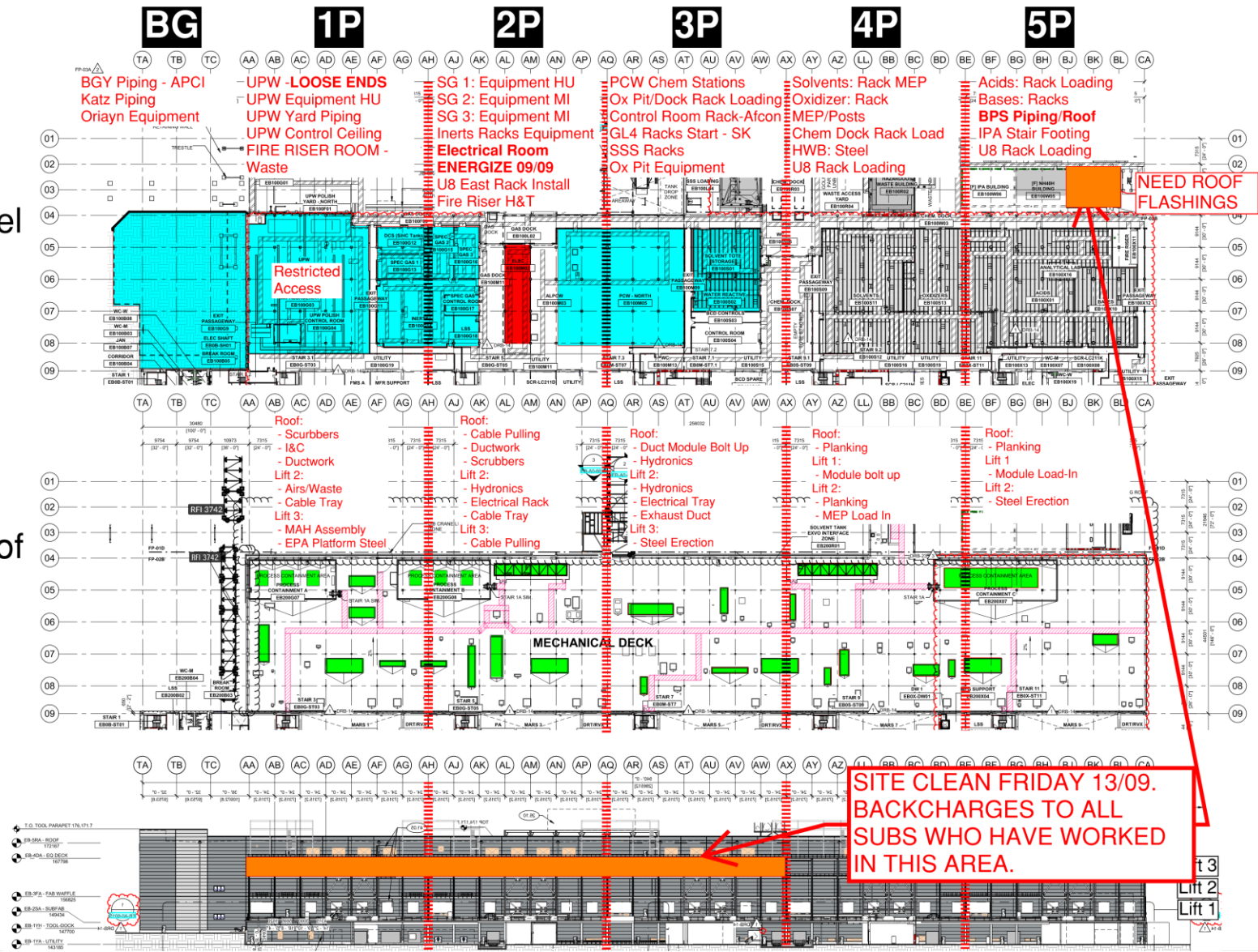
BLOWDOWN 30%

[illegible]

PSSS.1

Utility Level
1YA

PSSS Roof
2SA

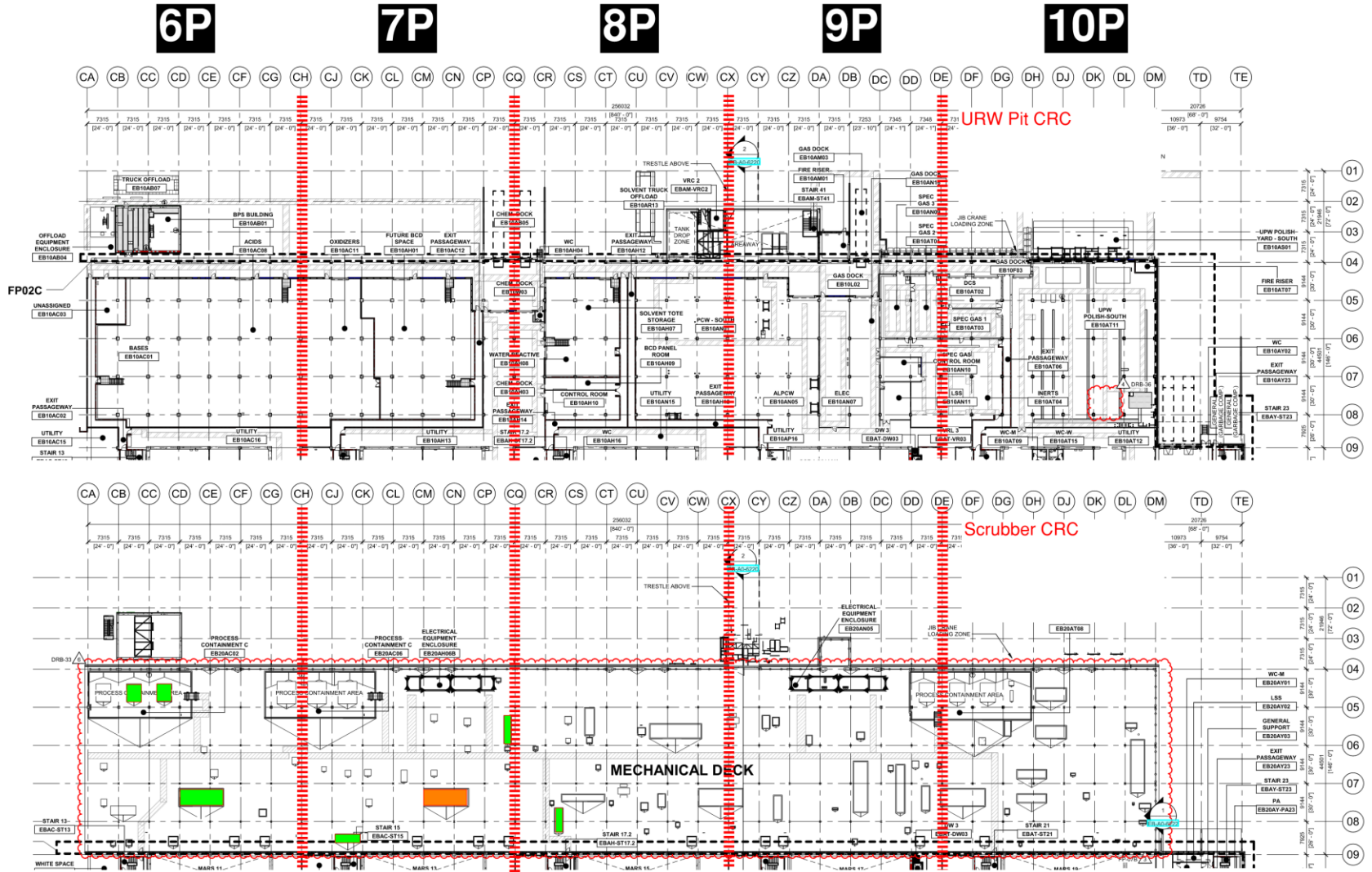


PSSS.2

Utility Level

1YA

PSSS Roof 2SA

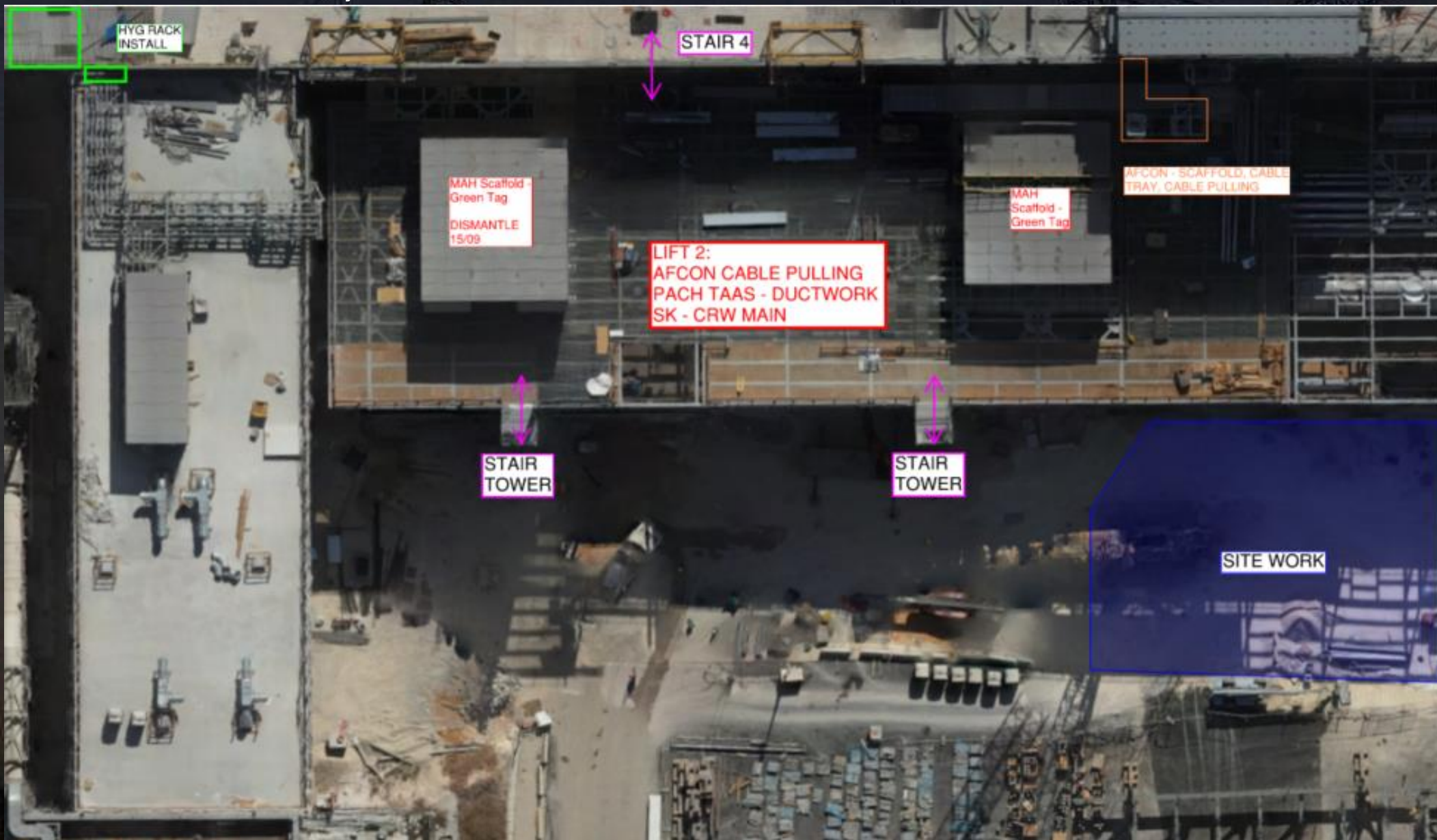


PSSS
CLEAN
13/09





WJG 01J, 02J LIFT 2 & 3





WJG 03J, 04J, 05J LIFT 2 & 3



Legend:

- Pach Taas - Ductwork (Pink)
- Carmel Bidud - Ductwork (Blue)
- SKE - DW/ CD Install (Orange)
- Meptagon - Supports (Green)

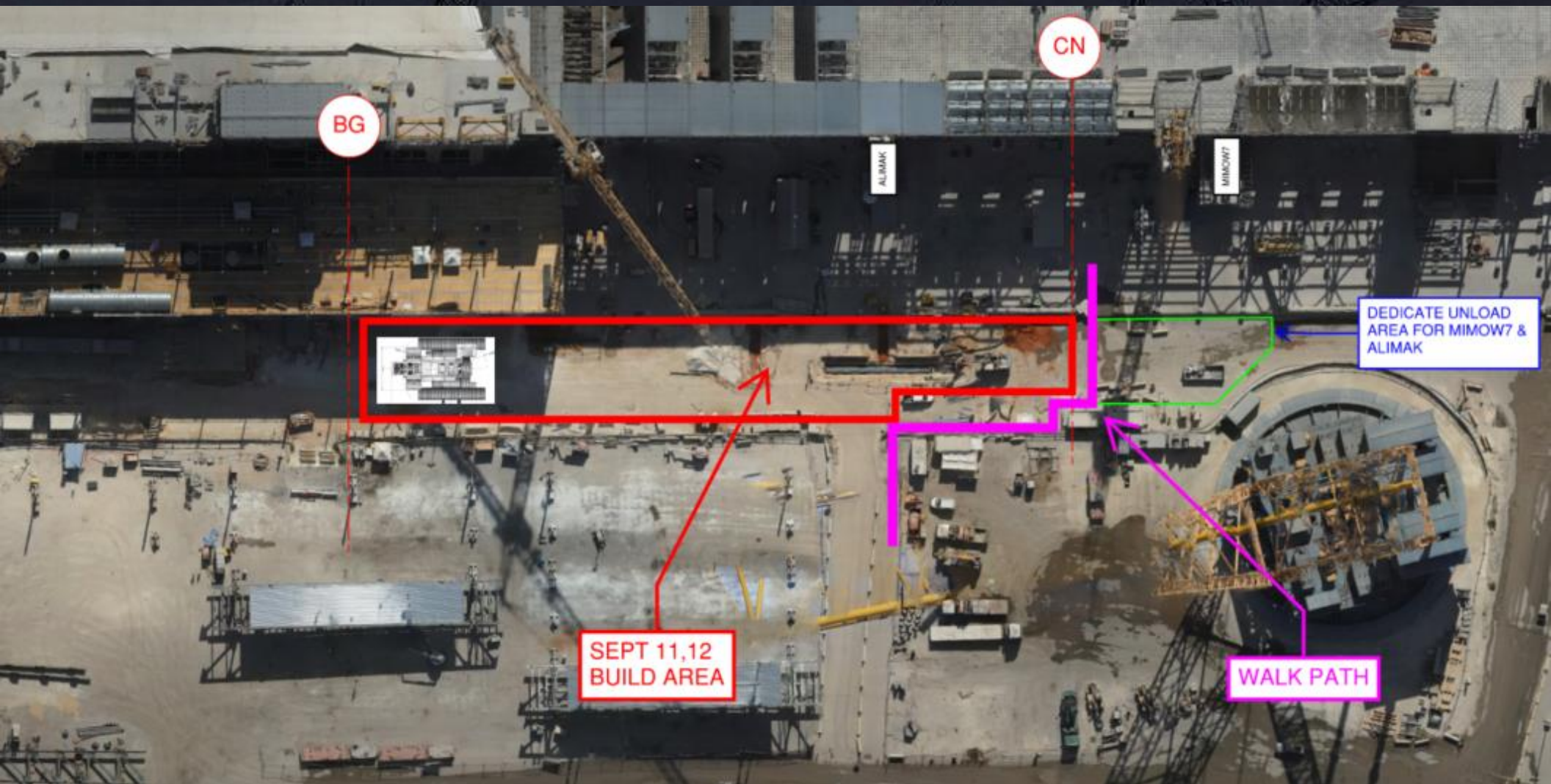
Rooms and Features:

- EB100K02, EB100K03, FIRE RISER EB100K04, STAIR 4 EB09-ST04
- EB100K05, FIRE RISER EB100K06, WC EB100K04, STAIR EB09-ST04
- EB100K07, JANITORIAL NCU/CU EB100K08, FIRE RISER EB100V02, STAIR EB09-ST04
- EB100V01, EB100V07, EB100V08, DW 2 EB0V-DW02, FIRE RISER EB100V09, STAIR EB09-ST04
- EB100V10, CHEM STAGING EB100V05, VRL 2 EB0V-VR02, CONTRACTOR CAGE 2B EB100V10
- EB10AA07, PA LOBBY EB10AA01, WC-W EB10AA03, WC-W EB10AA05, FIRE RISER EB10AA05, STAIR 12 EBAA-ST12

Other Labels:

- RETAINING WALL
- JB CRANE LOADING ZONE
- OPEN - NO IFFS

CC3800 Crane Build

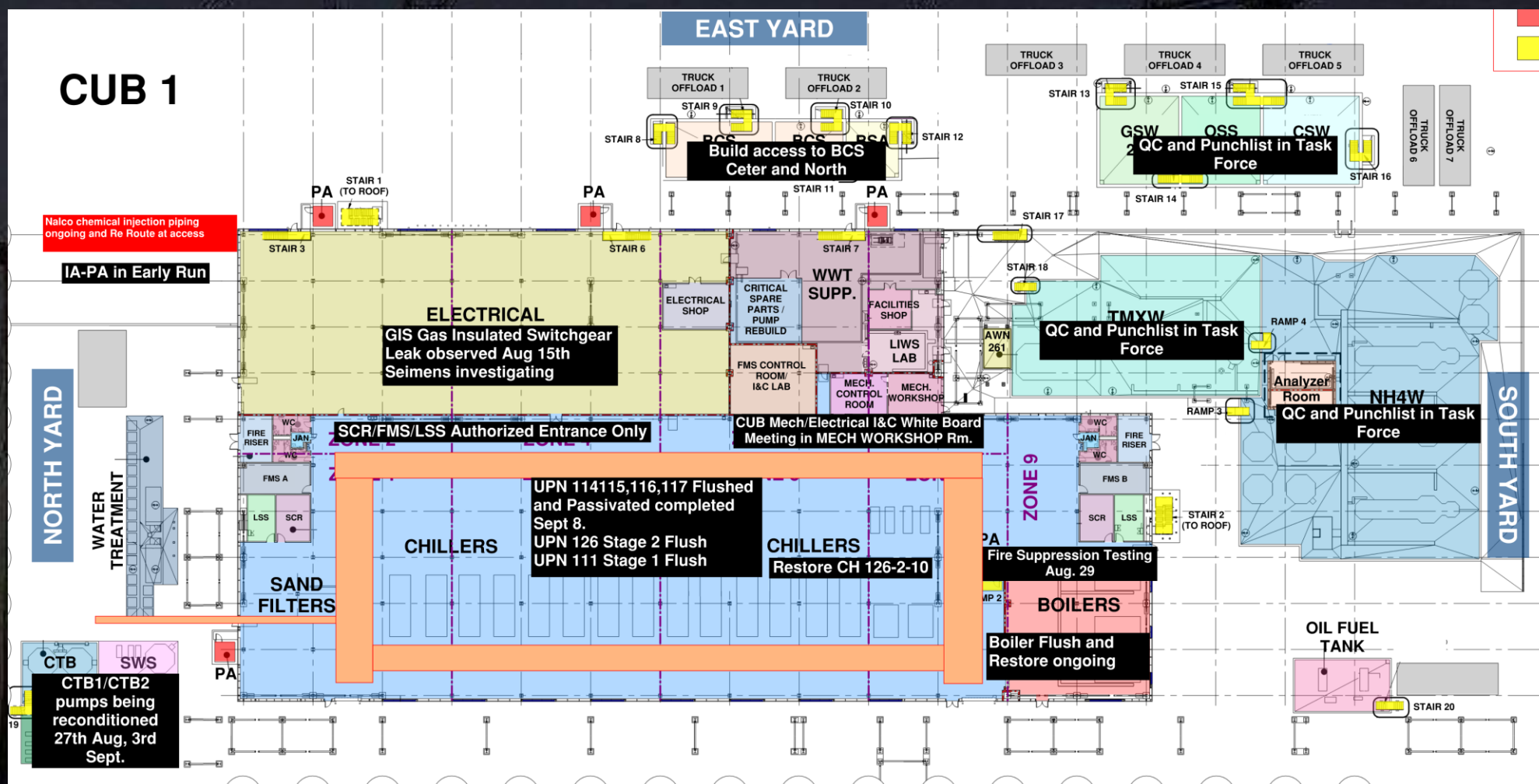


UPN 126/113
Fab

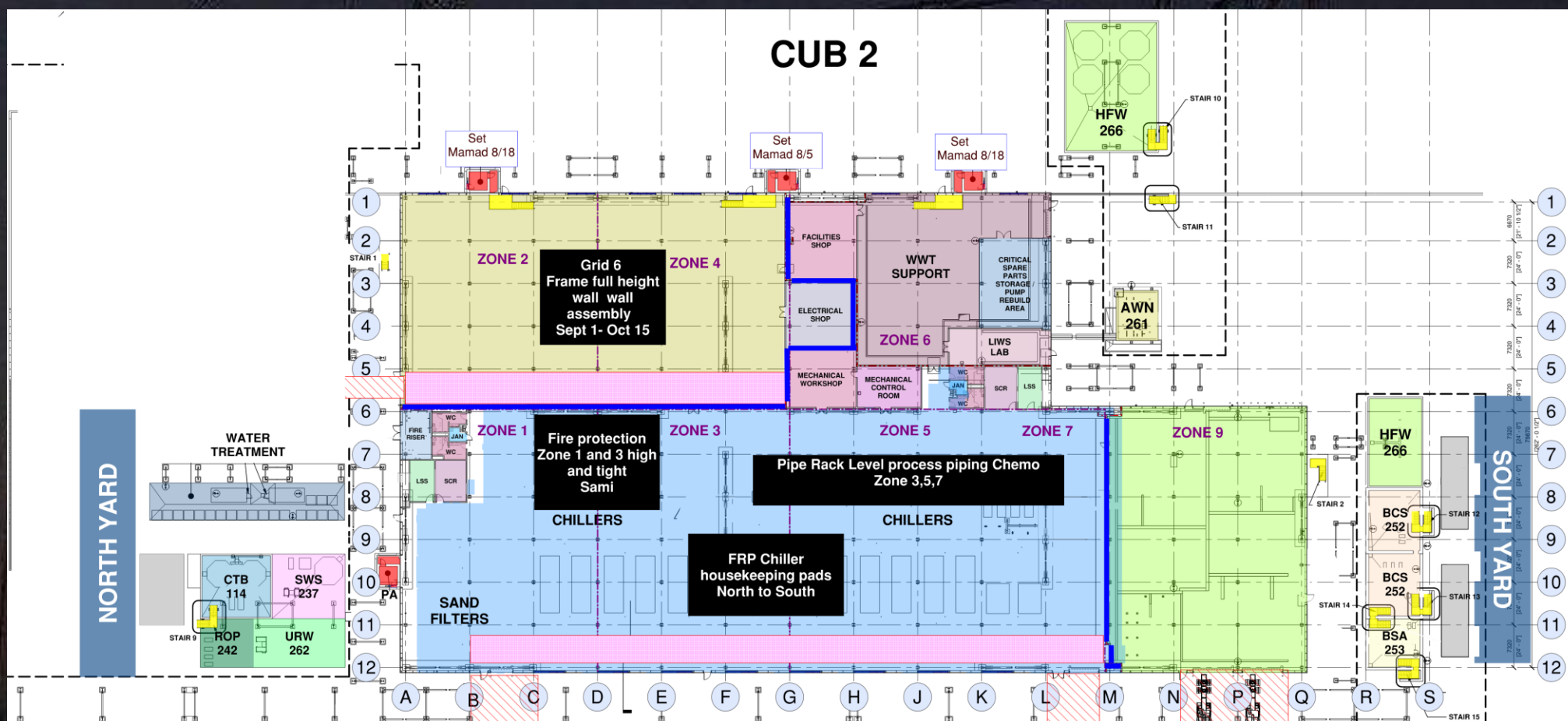


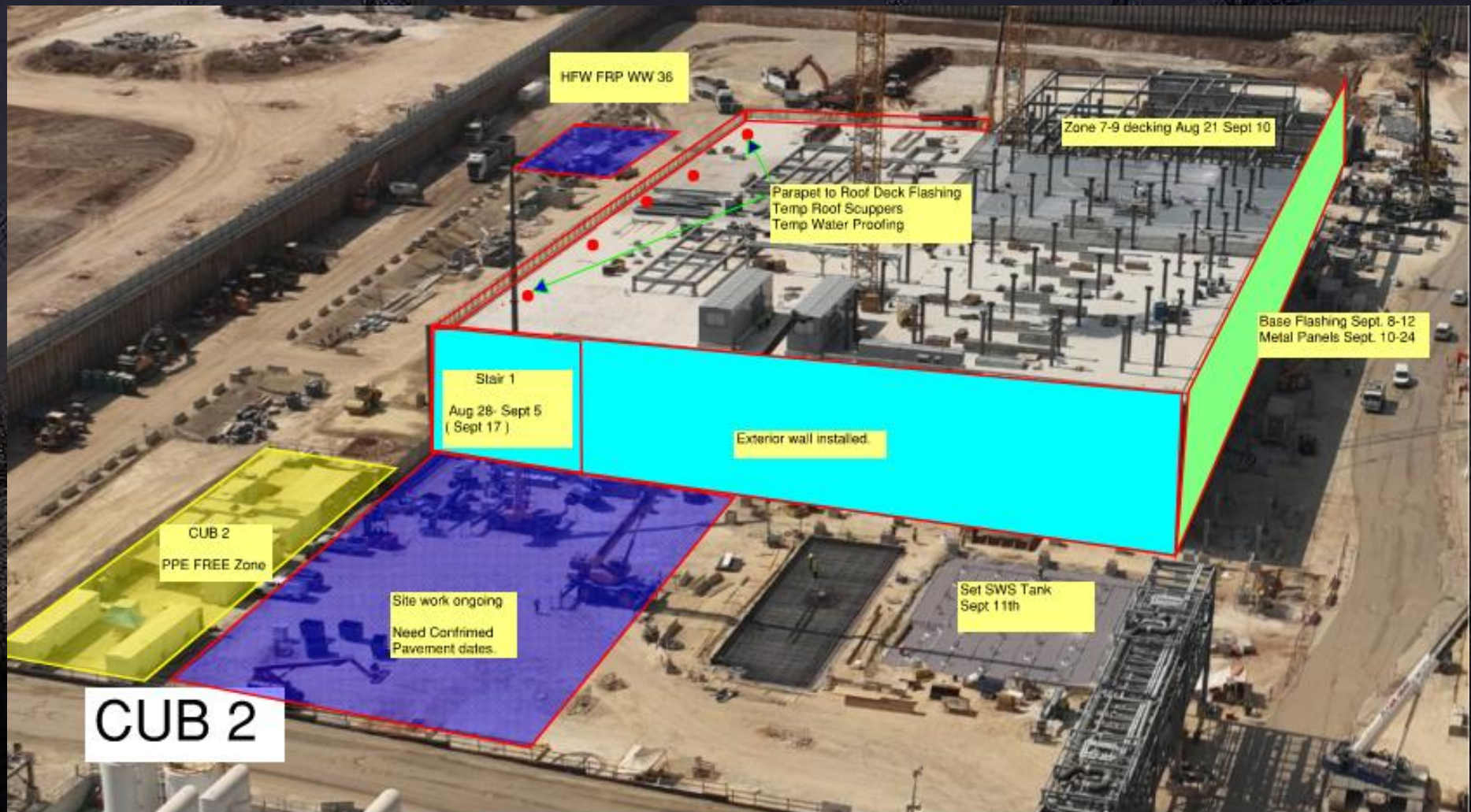
Passivation Ongoing
UPN126/113
North side EJG/WJG

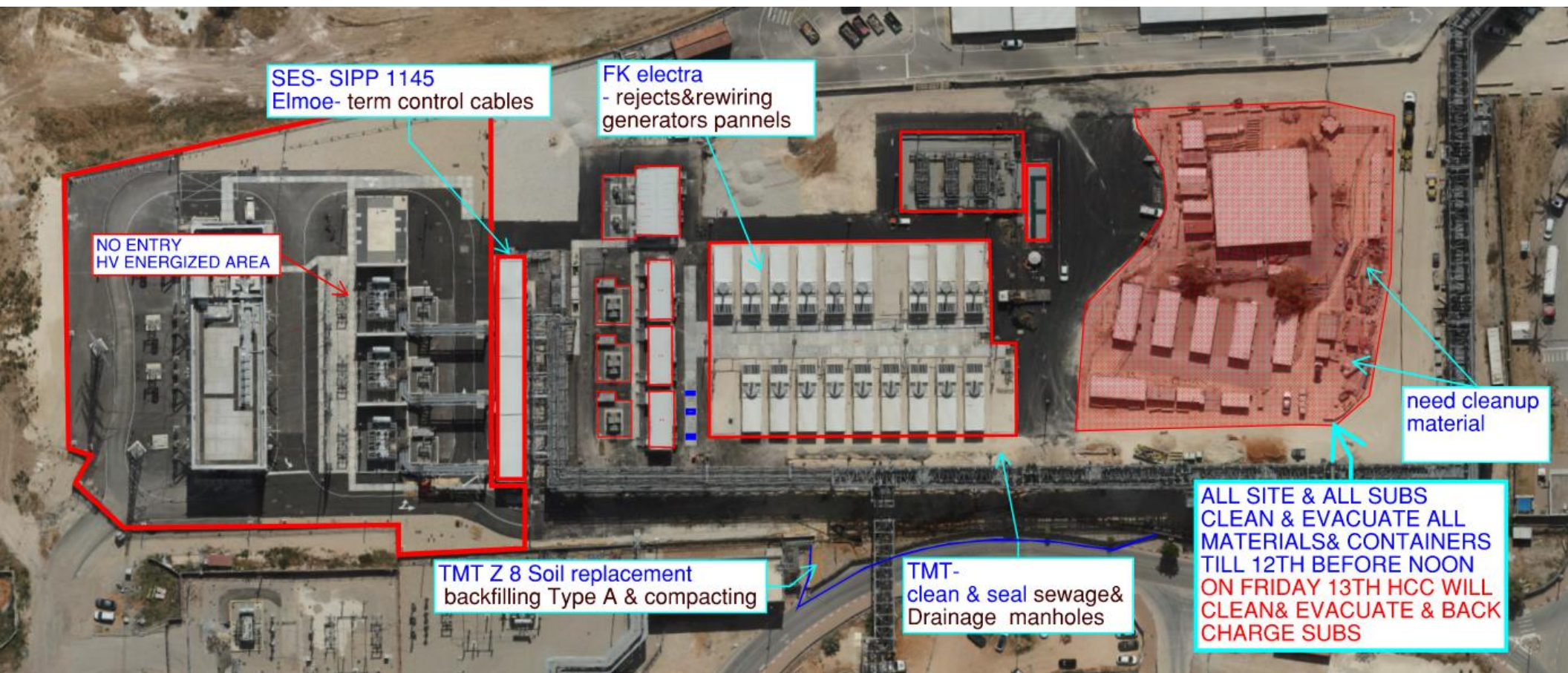
CUB 1











- TMT

EVACUATE MATERIALS
12.9 before noon

-

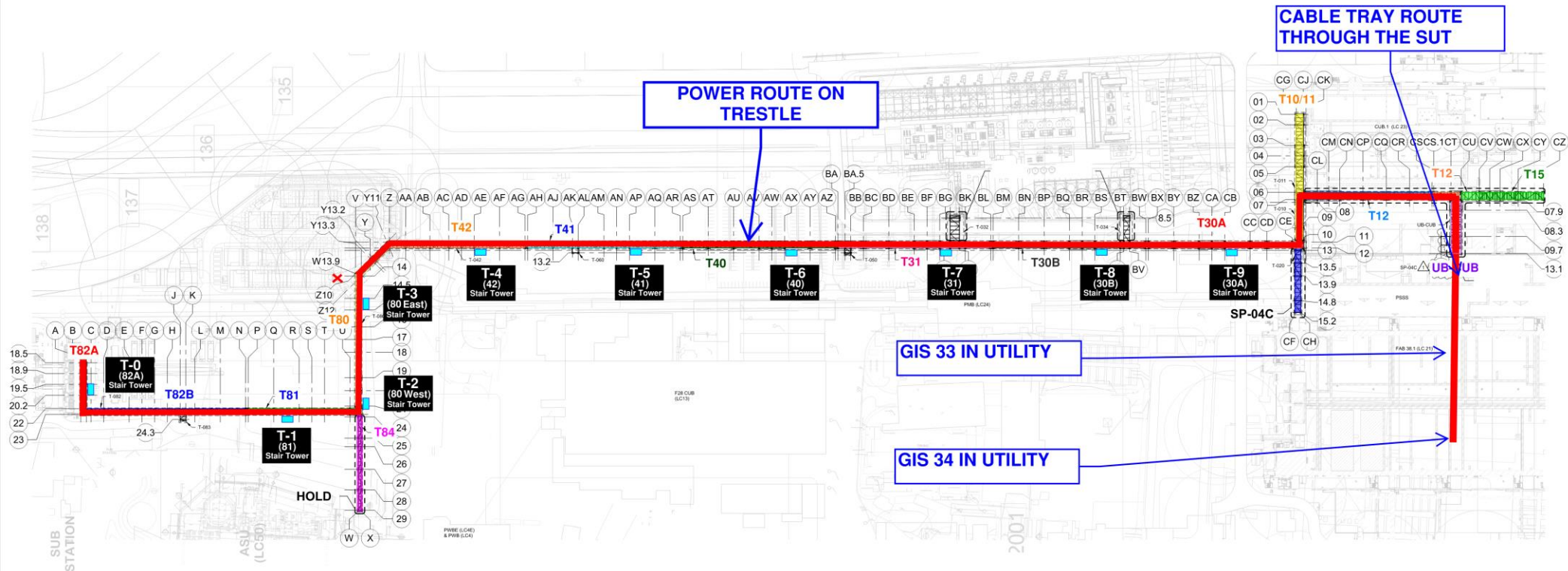


- Elmor

-EVACUATE MATERIALS 12.9
before noon



FAB GIS 33&34 PERMENENT POWER
September 8th 7:00am to 8:00am.





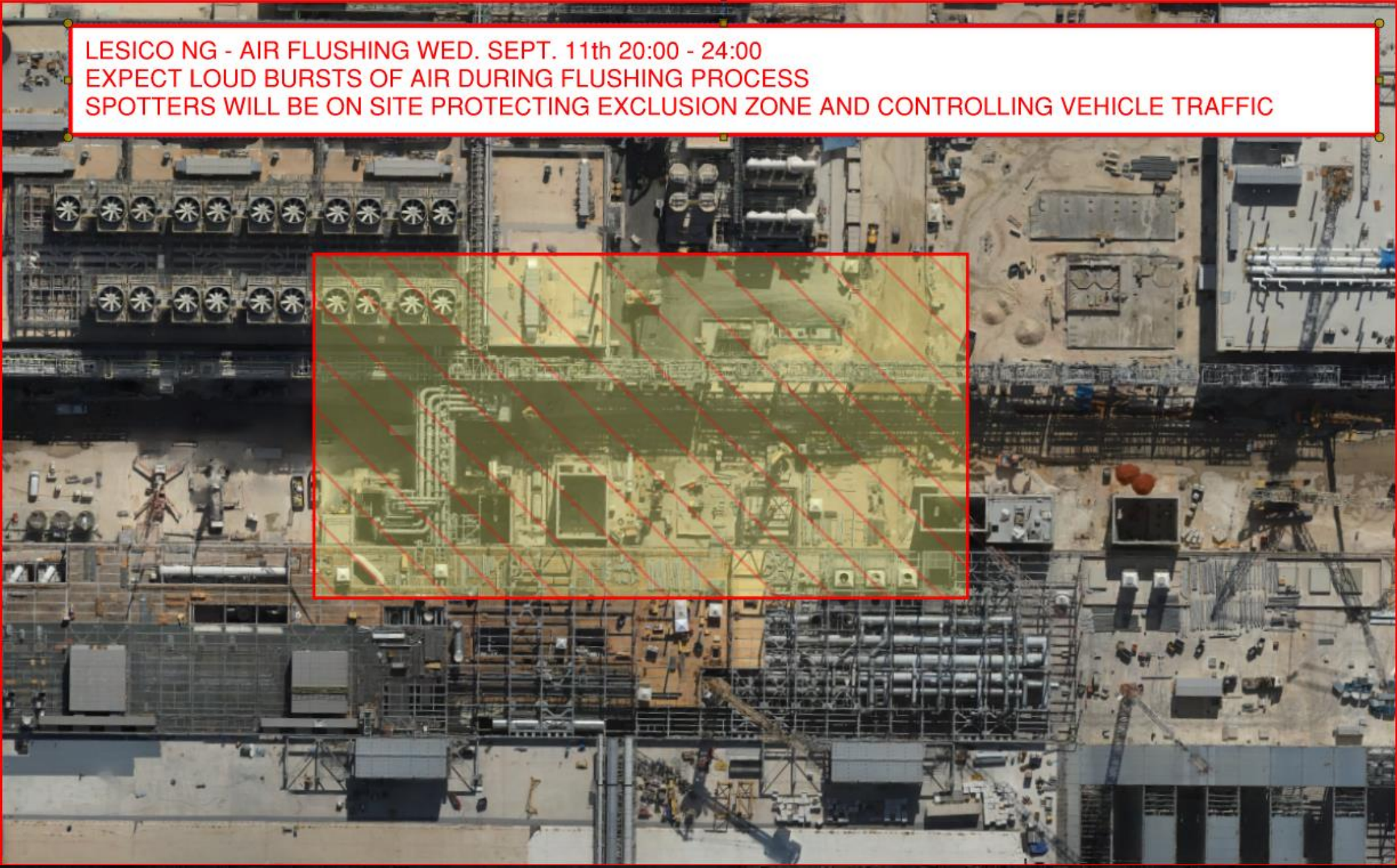


HOFFMAN CONSTRUCTION COMPANY



HOFFMAN
Sparrow  

LESICO NG - AIR FLUSHING WED. SEPT. 11th 20:00 - 24:00
EXPECT LOUD BURSTS OF AIR DURING FLUSHING PROCESS
SPOTTERS WILL BE ON SITE PROTECTING EXCLUSION ZONE AND CONTROLLING VEHICLE TRAFFIC



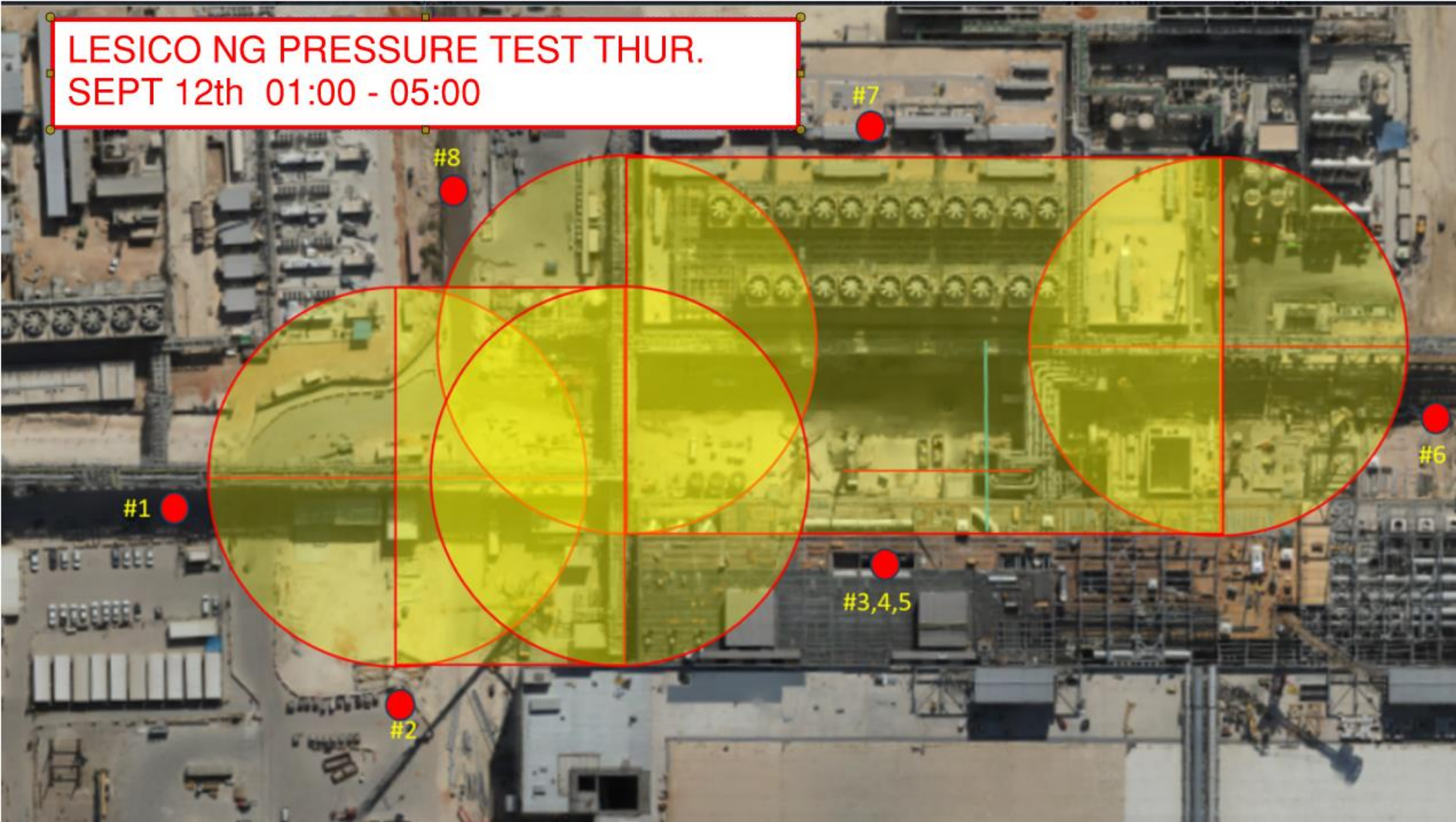


HOFFMAN CONSTRUCTION COMPANY



HOFFMAN
Sparrow  

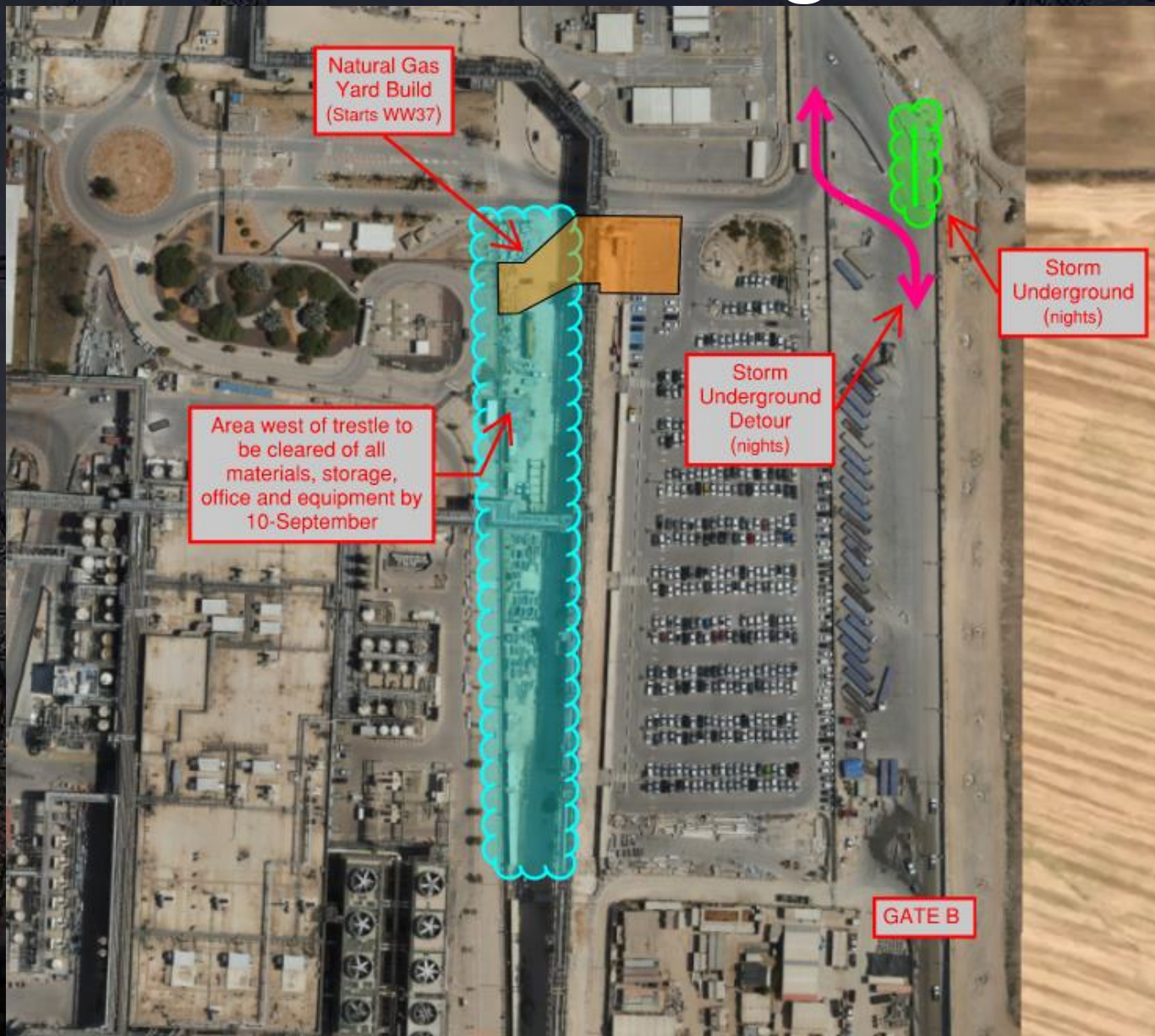
LESICO NG PRESSURE TEST THUR.
SEPT 12th 01:00 - 05:00





Daily Coordination Meeting

Site Logistics
North Gate B





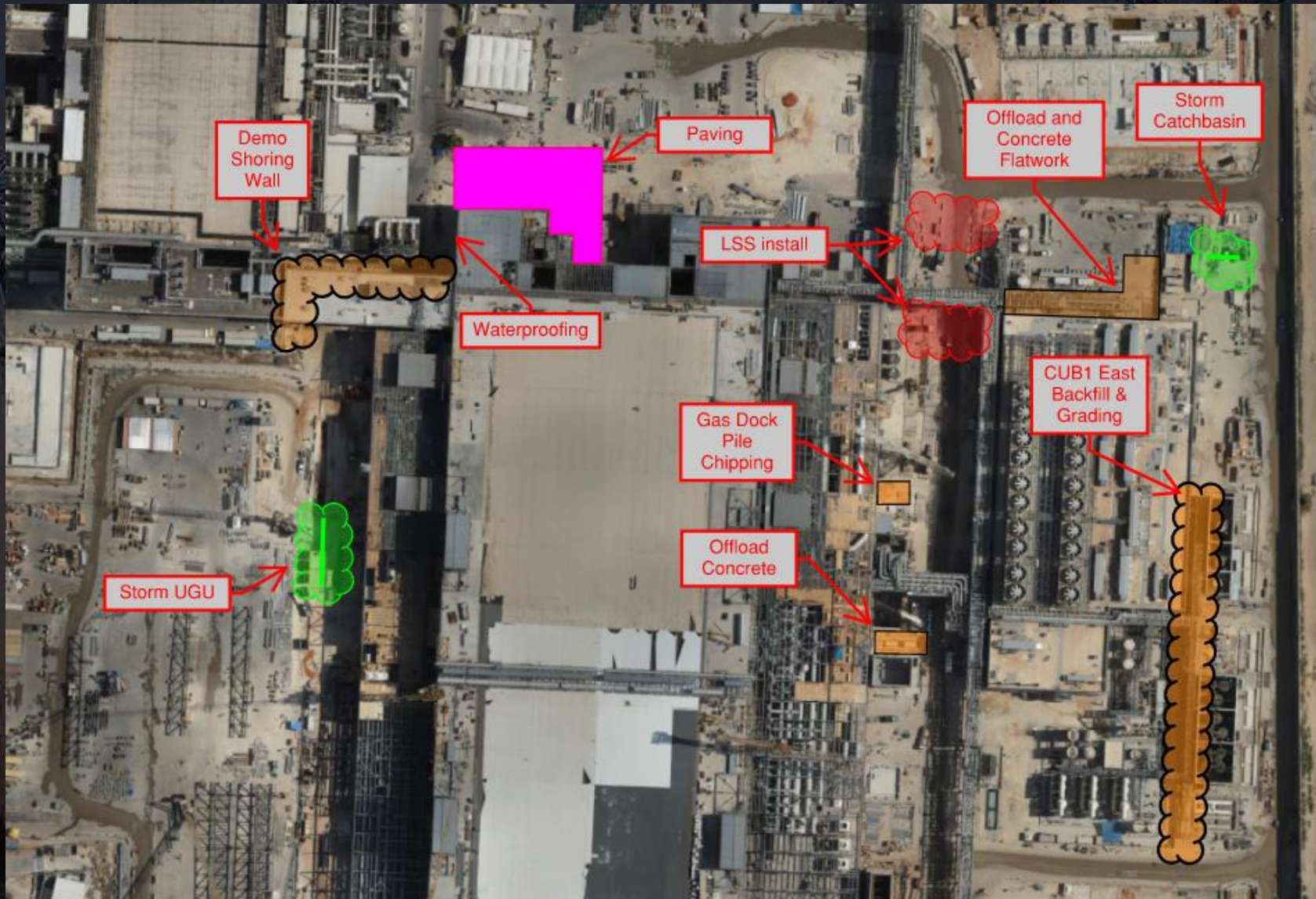
HOFFMAN CONSTRUCTION COMPANY



Daily Coordination Meeting

Site Logistics

North

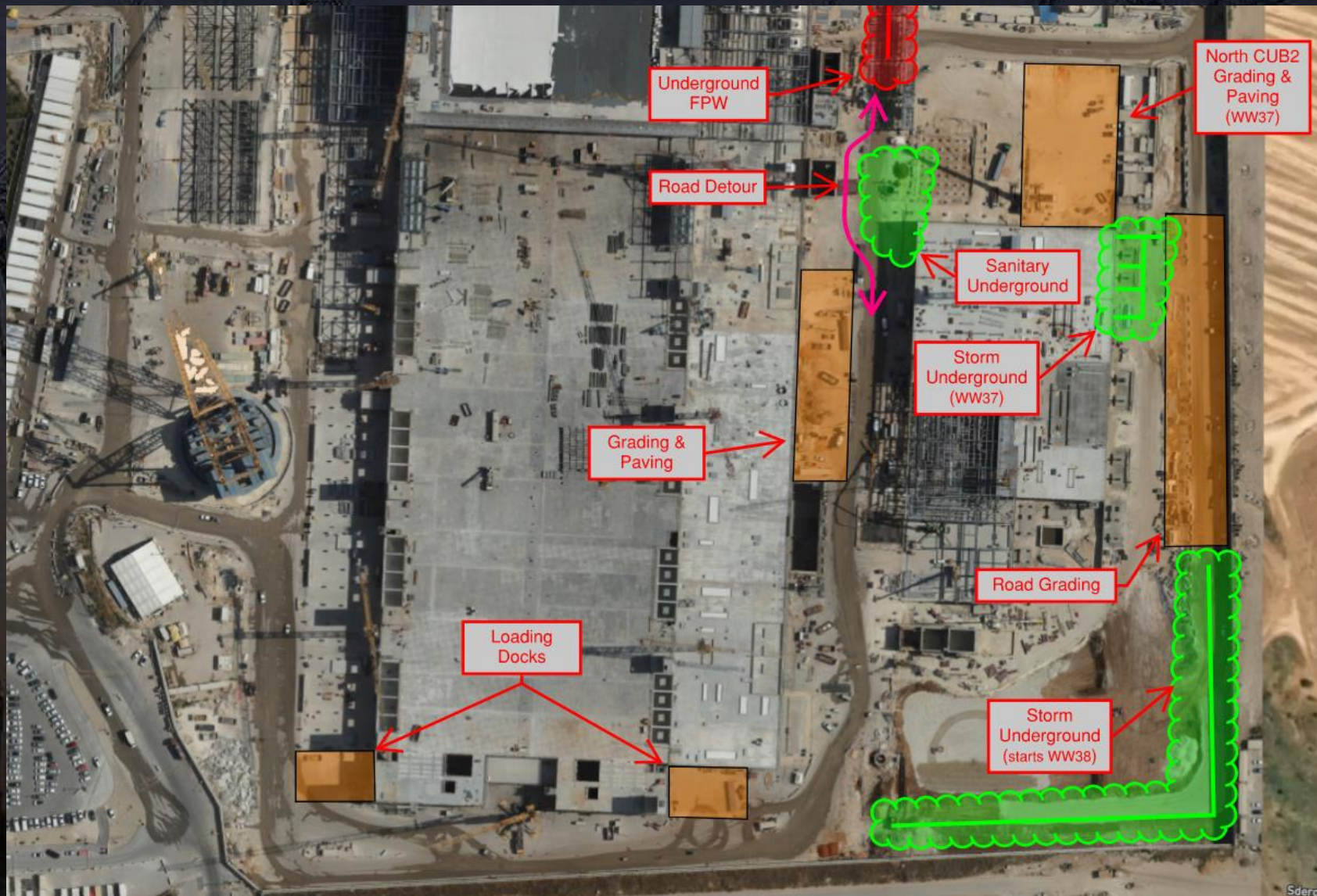




Daily Coordination Meeting

Site Logistics

South



Daily Coordination Meeting

Site Logistics

Cleanup: Subcontractor shall always keep the project free from the accumulation of waste materials caused by its employees, Subcontractor's employees, or Work on the project. Subcontractor shall continually and thoroughly cleanup and remove from jobsite, at its sole expense, all waste, debris, surplus equipment and surplus materials resulting from Subcontractor's operations. If Subcontractor fails to clean up such waste, debris, surplus materials and surplus equipment, such clean up and removal will be done by others and costs for this work will be deducted from the Subcontract by Contractor.

AREA IN ORANGE = NEY CLEANUP WHICH ALSO INCLUDES THE TRESTLE FRIDAY, 13-September-2024

***BACKCHARGES WILL BE SENT TO AFFECTED SUBCONTRACTORS, COST FOR EMPTY PALLETS AND WOOD WILL BE DIVIDED AMONG ALL SUBCONTRACTORS IN THE AREA.**

***ROPE AROUND MATERIAL DOES NOT MAKE IT ACCEPTABLE TO STORE ITEMS FOR MORE THAN 3 DAYS**



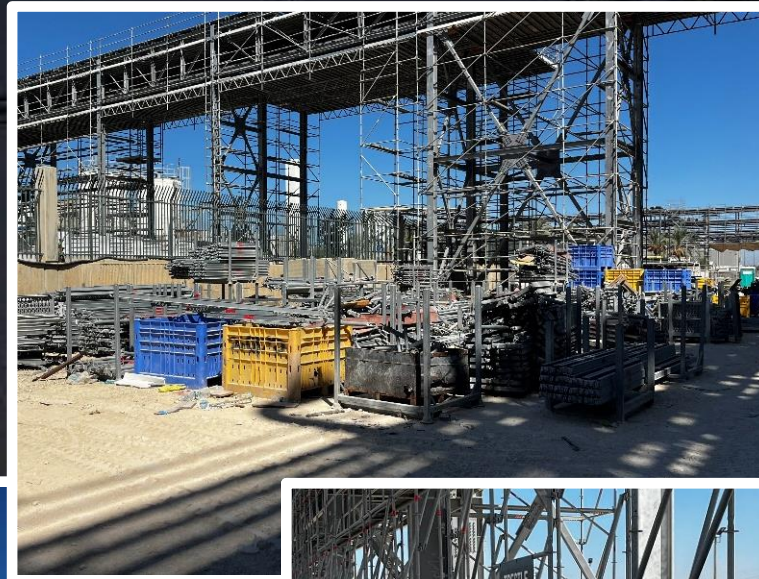
TRESTLE

NEY

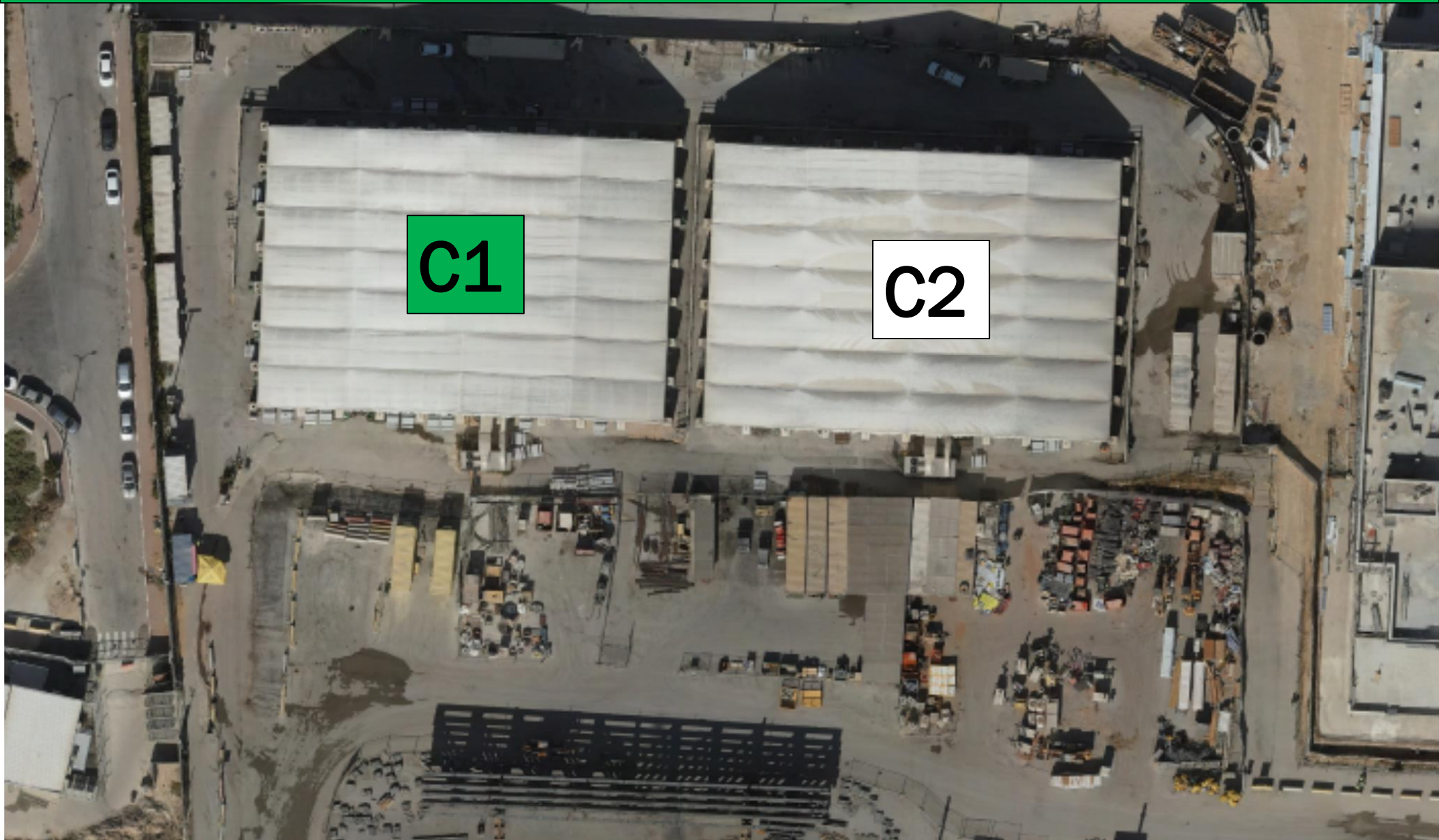
Daily Coordination Meeting

Site Logistics

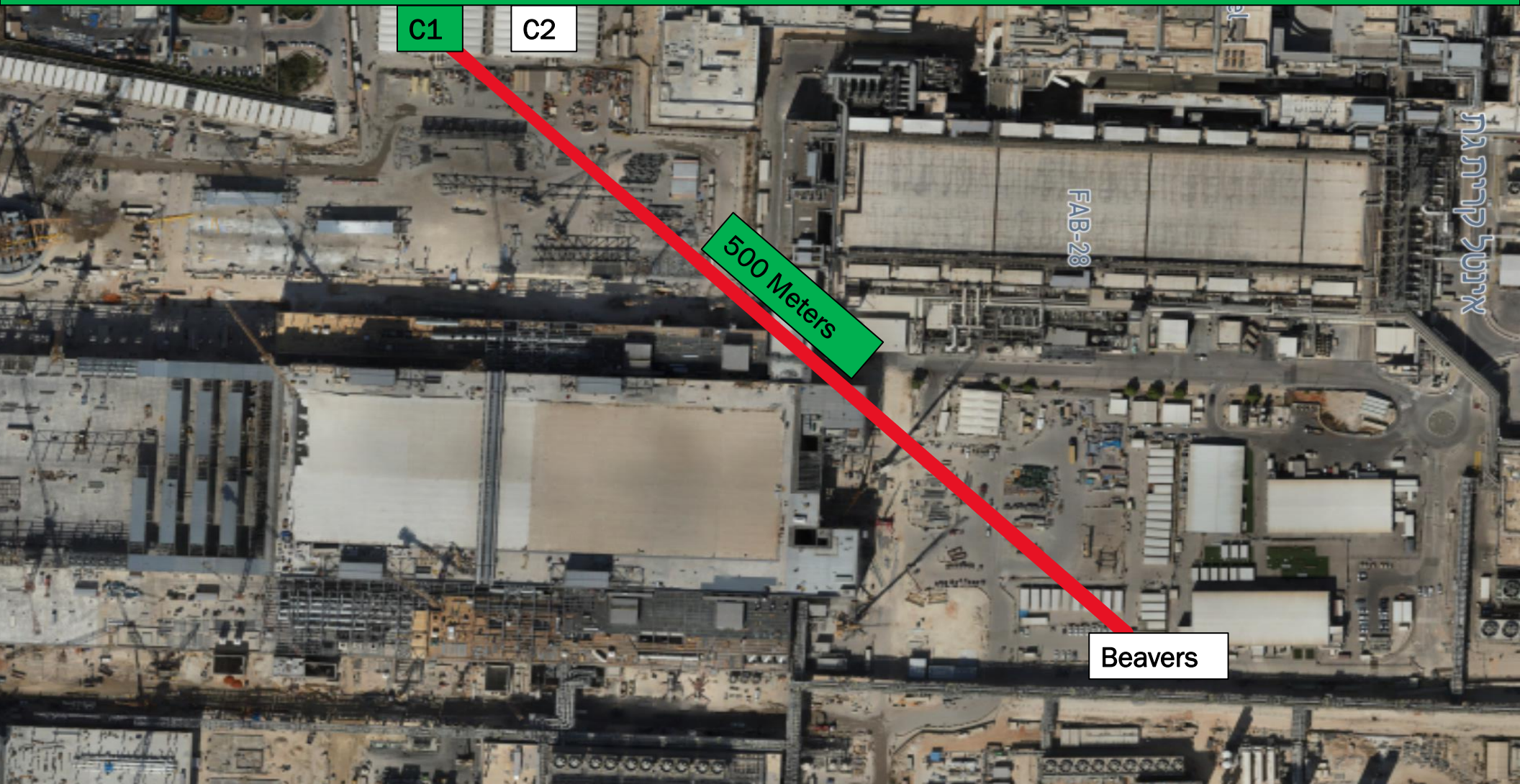
NEY / Trestle Cleanup



Deep cleaning on Friday 13th September – tent C1




Deep cleaning on Friday 13th September – tent C1





How Leaders Respond Matters


- Your mentality and reaction to field conditions, work progression, and safety issues directly affects the way your workers respond to obstacles in the field and can affect the incidents your company has.
- Be mindful as leaders what your response or lack of response could be saying to your workers.
- For instance- if you have a worker climbing on the midrail of an MEWP to access their work- what should your action be?
 - Many of you are deciding to do nothing, and thus your workers continue to put themselves in danger.
 - Instead you need to look at your plan for accessing that work and adjust, communicate, and execute that plan.
- If you see one of your workers without glasses- what is your response? How about when work isn't completed on time? How about when it is incredibly hot outside and your workers are stealing water?
- Remember that the words you say, the actions you take, all are important to the safety of your workers.


Heat Index- September 12th

	temperature (°F)																
	80	82	84	86	88	90	92	94	96	98	100	102	104	106	108	110	
Relative Humidity (%)	40	80	81	83	85	88	91	94	97	101		109	114	119	124	130	136
	45	80	82	84	87	89	93	96	100	104	109	114	119	124	130	137	
	50	81	83	85	88	91	95	99	103	108	113	118	124	131	137		
	55	81	84	86	89	93	97	101	106	112	117	124	130	137			
	60	82	84	88	91	95	100	105	110	116	123	129	137				
	65	82	85	89	93	98	103	108	114	121	128	136					
	70	83	86	90	95	100	105	112	119	126	134						
	75	84	88	92	97	103	109	116	124	132							
	80	84	89	94	100	106	113	121	129								
	85	85	90	96	102	110	117	126	135								
	90	86	91	98	105	113	122	131									
95	86	93	100	108	117	127											
100	87	95	103	112	121	132											

 Caution

 Extreme Caution

 Danger

 Extreme Danger

DANGER

- Ensuring water and shaded areas available
- Acclimating workers
- Emergency planning and response
- Training workers and supervisors on the signs of heat stress and preventative measures
- Modified work schedules and/or rotating out workers
- Monitoring of workers for signs of heat stress
- Additional water breaks mandated. (Can be in work area)
- Increased rotation and monitoring of workers and area conditions.

BE PREPARED. Fully in the danger zone tomorrow, not just bordering it.

Daily Coordination Meeting



14:00 Sign In