

Daily Coordination Meeting

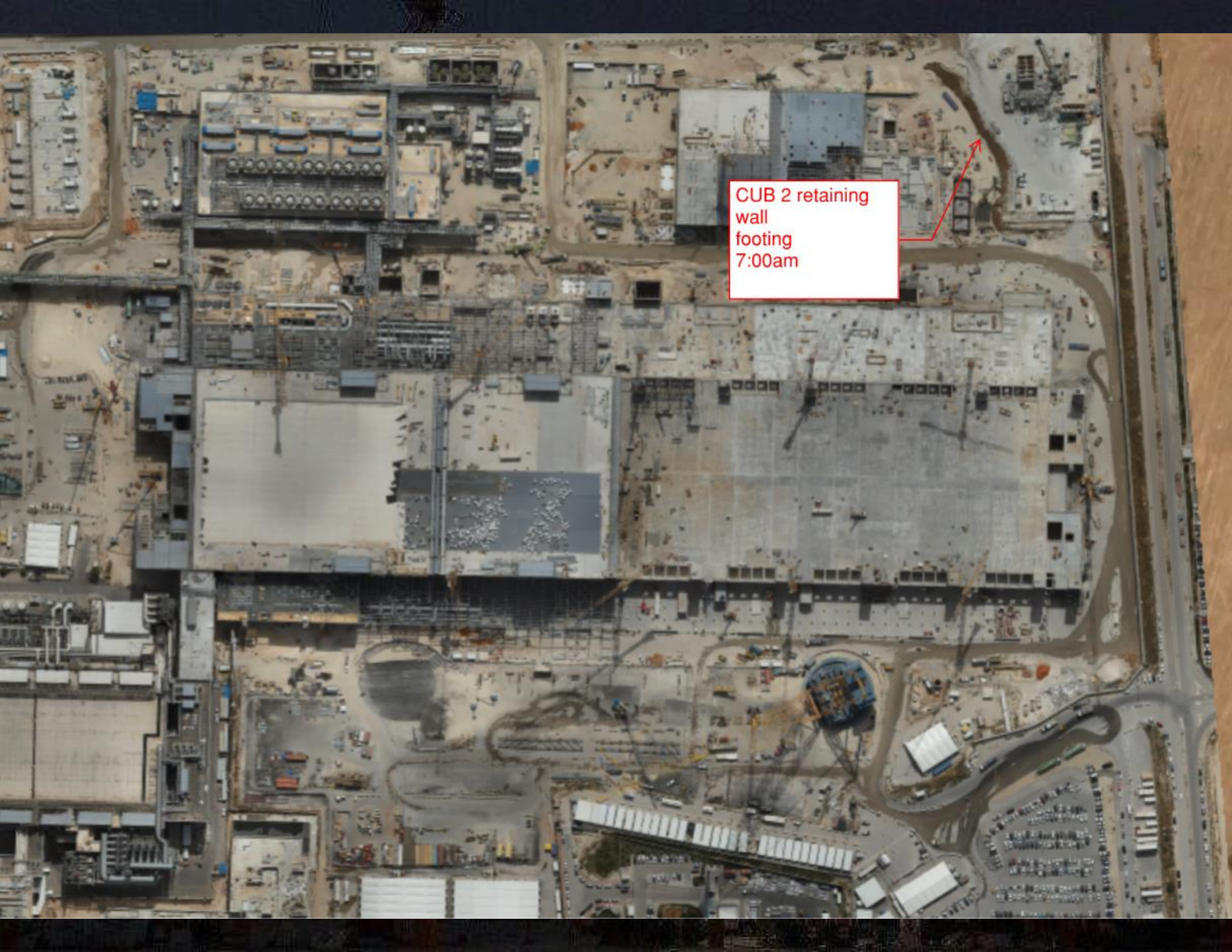


14:00 Sign In

Daily Coordination Meeting

General Topics:

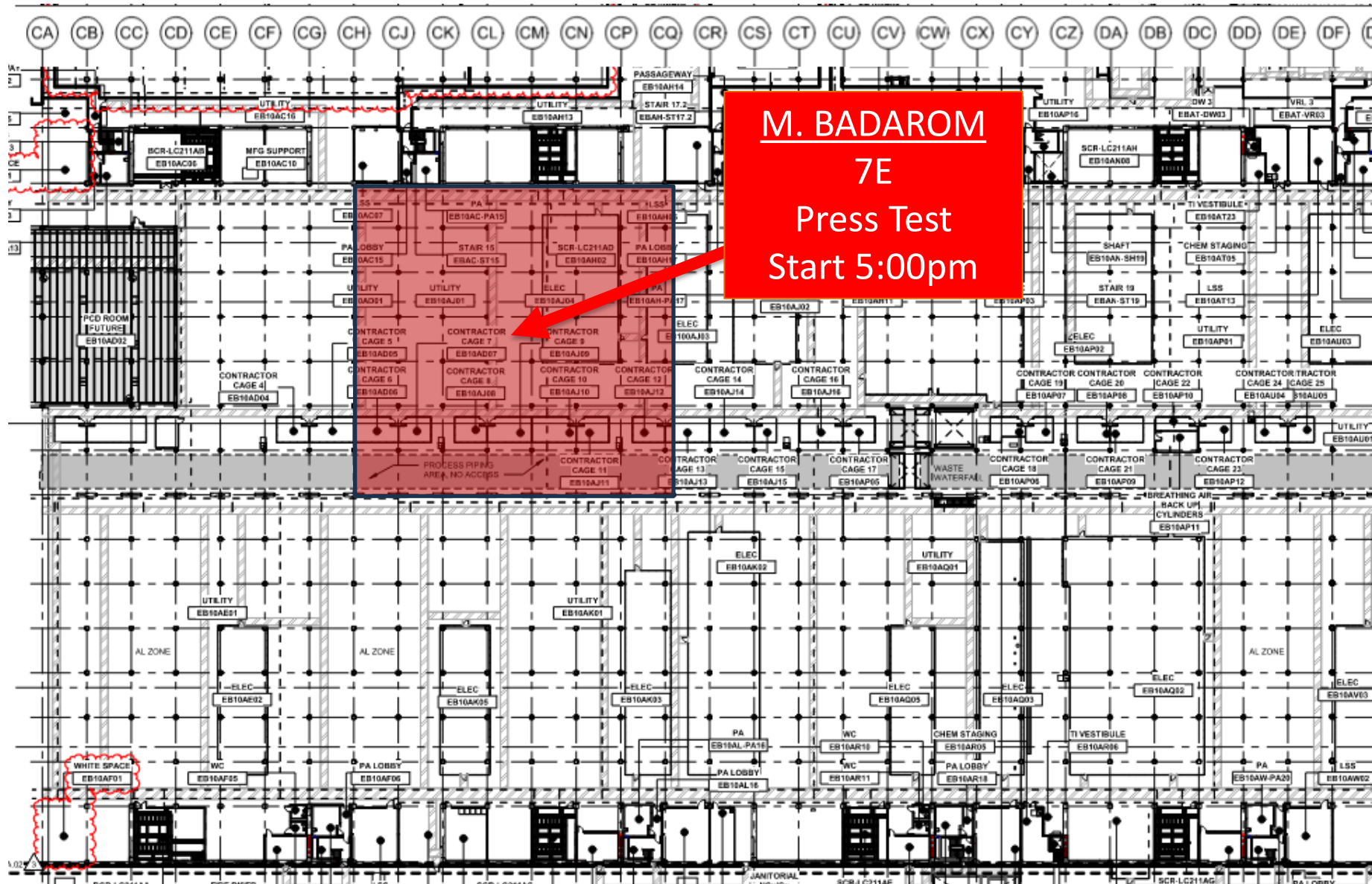
- Assume all systems are live



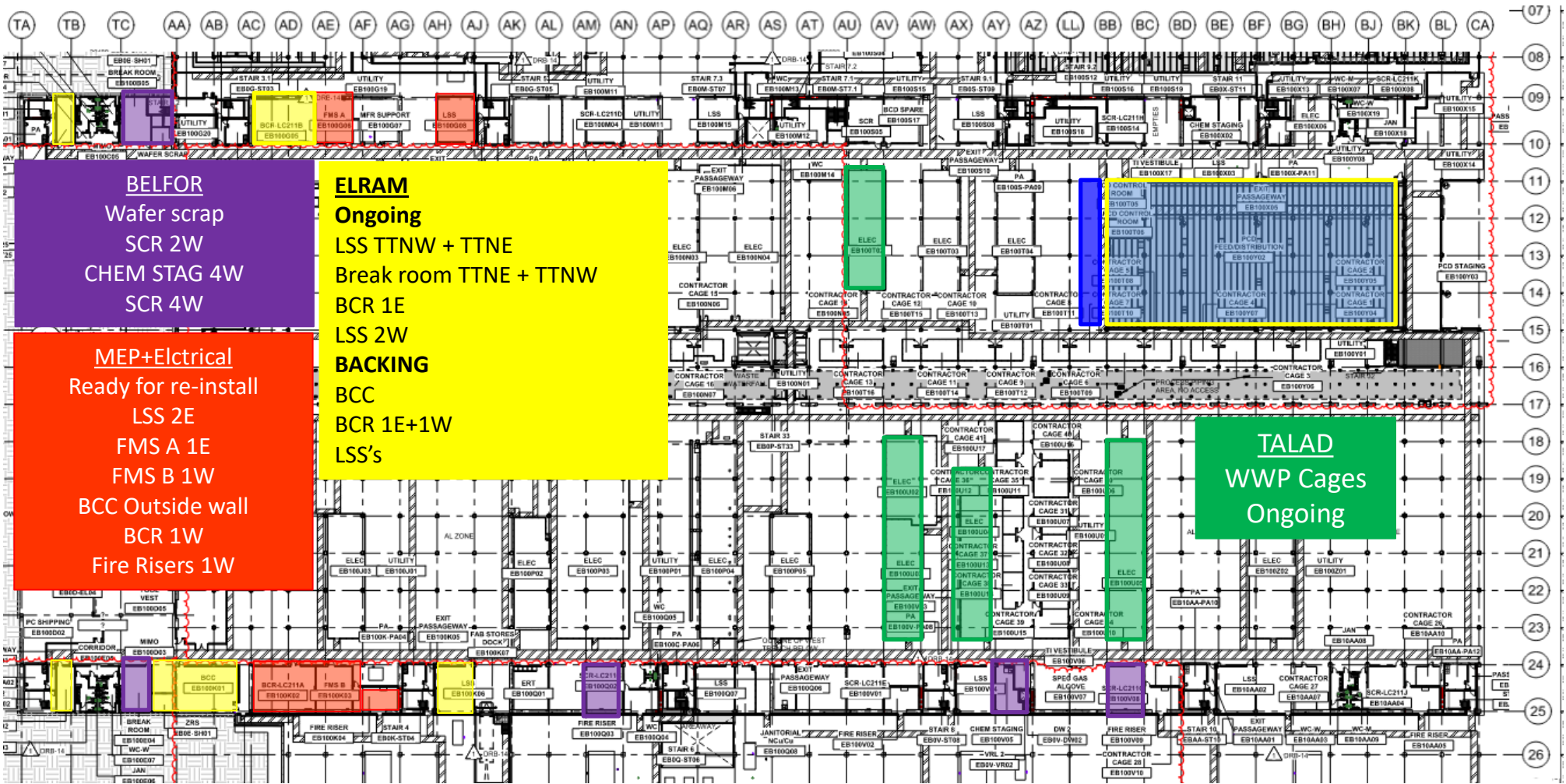
CUB 2 retaining
wall
footing
7:00am

This is an aerial photograph of a large-scale construction project. The image shows several large, rectangular concrete structures, some of which are partially completed. A prominent feature is a long, horizontal concrete wall or footing that runs across the middle of the site. To the right of this wall, there is a large, circular structure that appears to be a water tank or a similar large-diameter pipe. The ground is a mix of dirt, gravel, and concrete. There are various pieces of construction equipment, including cranes and trucks, scattered throughout the site. A red arrow points from the text box to a specific location on the right side of the image, near the circular structure. The overall scene is one of active construction.

UTILITY LEVEL TRUSS



UTILITY LEVEL MOD1



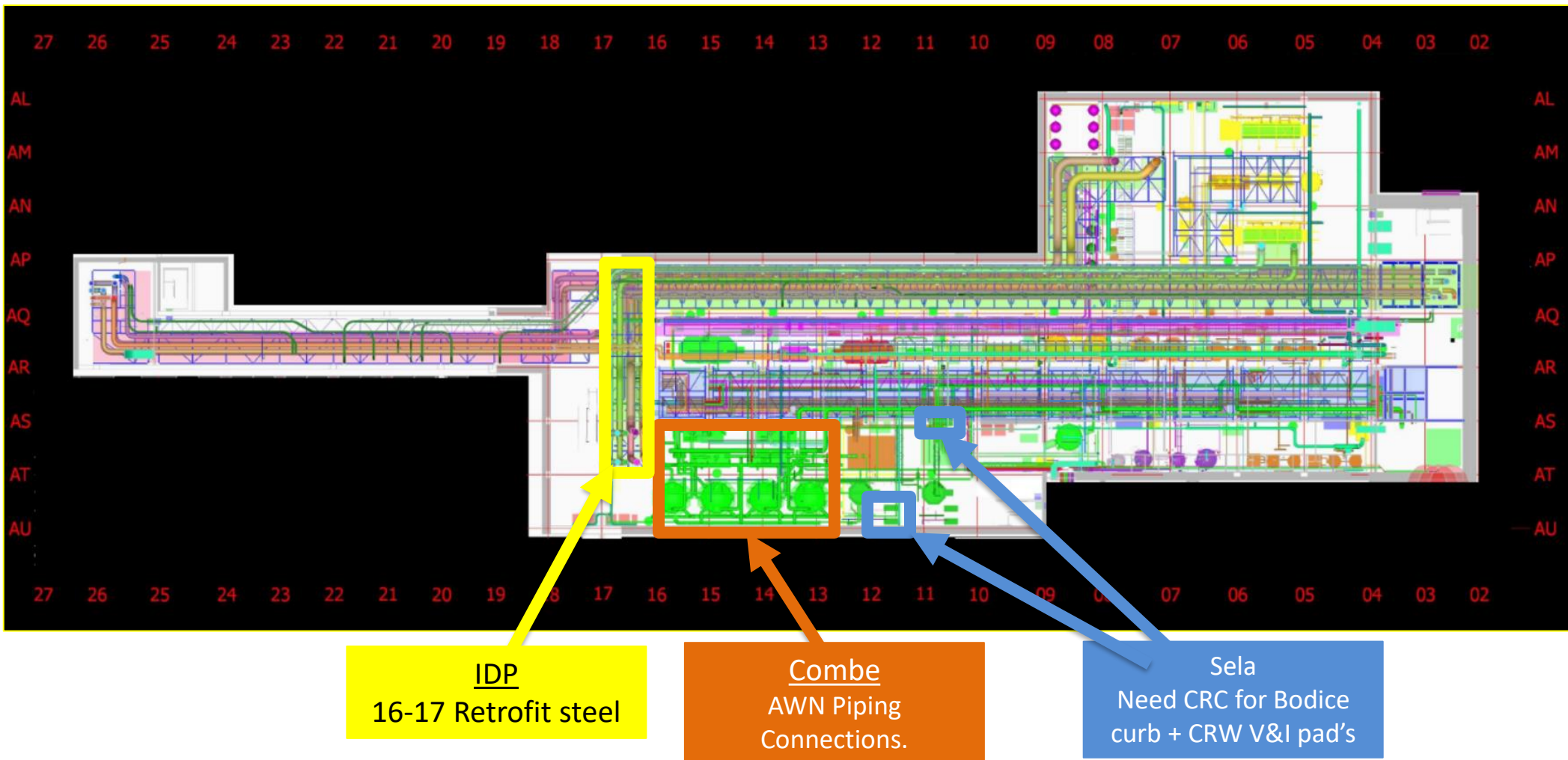


MEPTAGON
10E Bridge strut install
Ongoing

MALHIMIM
10W
Sprinklers install

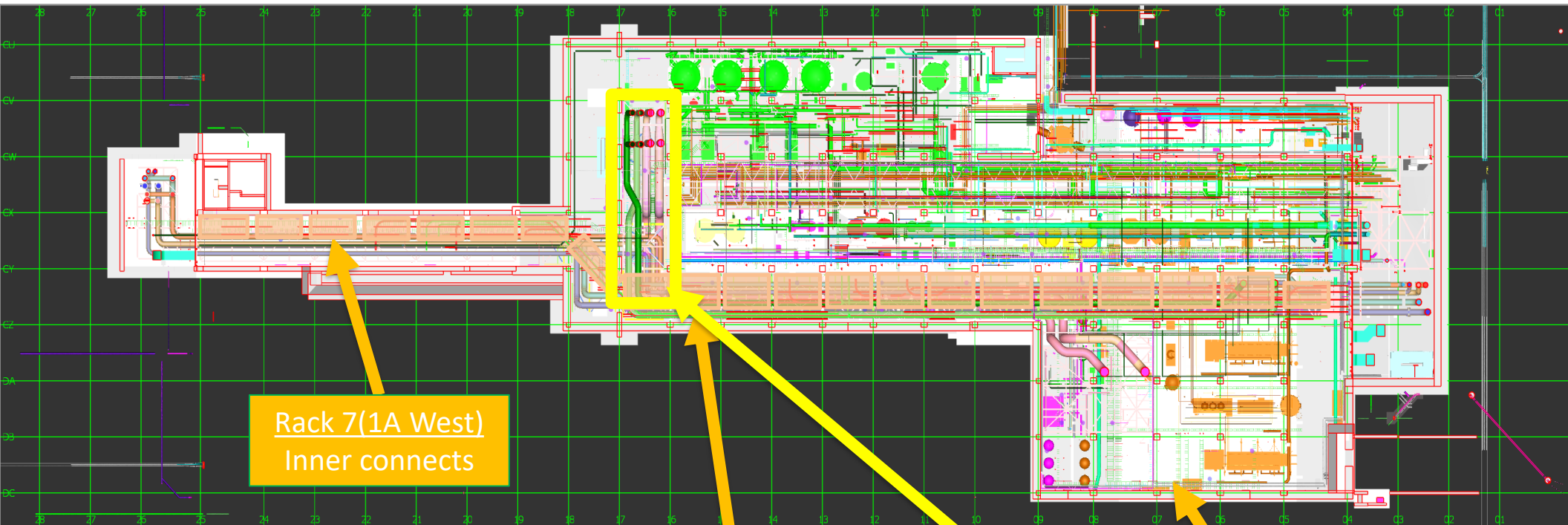


SUT 38.1 LEVEL





SUT 38.2 LEVEL



Rack 7(1A West)
Inner connects

1A Rack
Inner connects

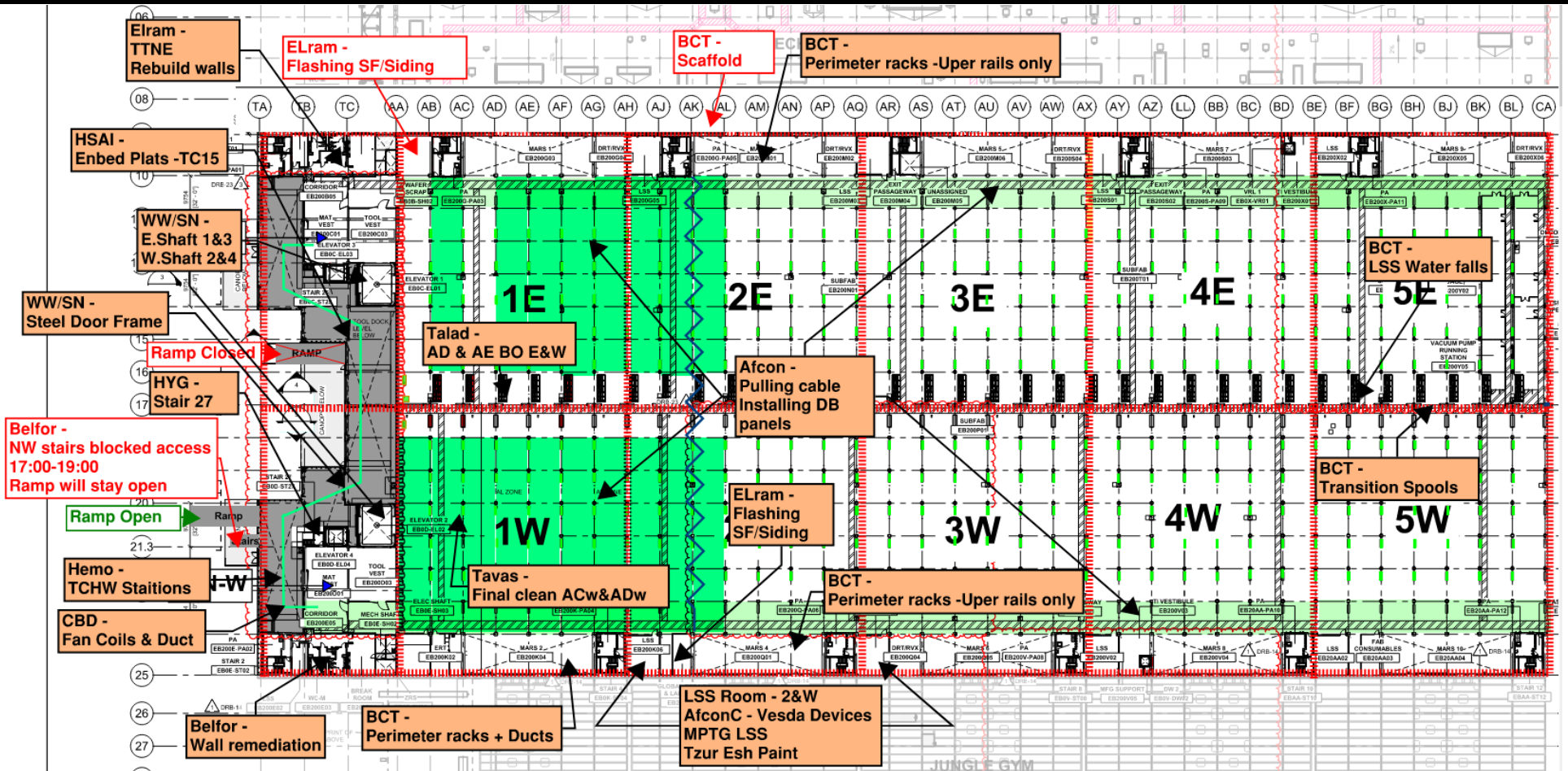
16-17 line
Upper Steel Bed
Pipe load-in

8 Rack
Lifting

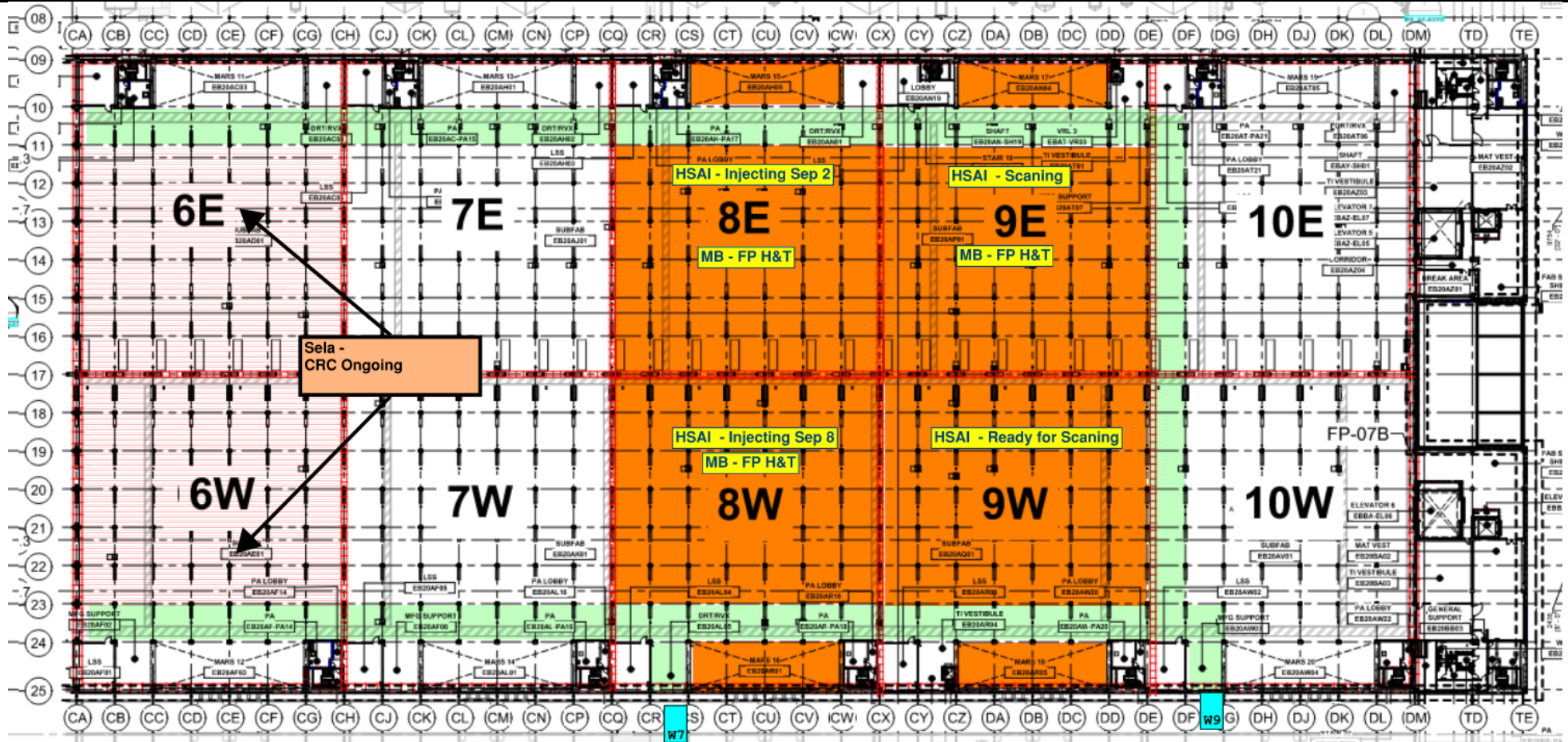
CRW
H&T
Installing supports

Vesda
H&T
Not actively installing

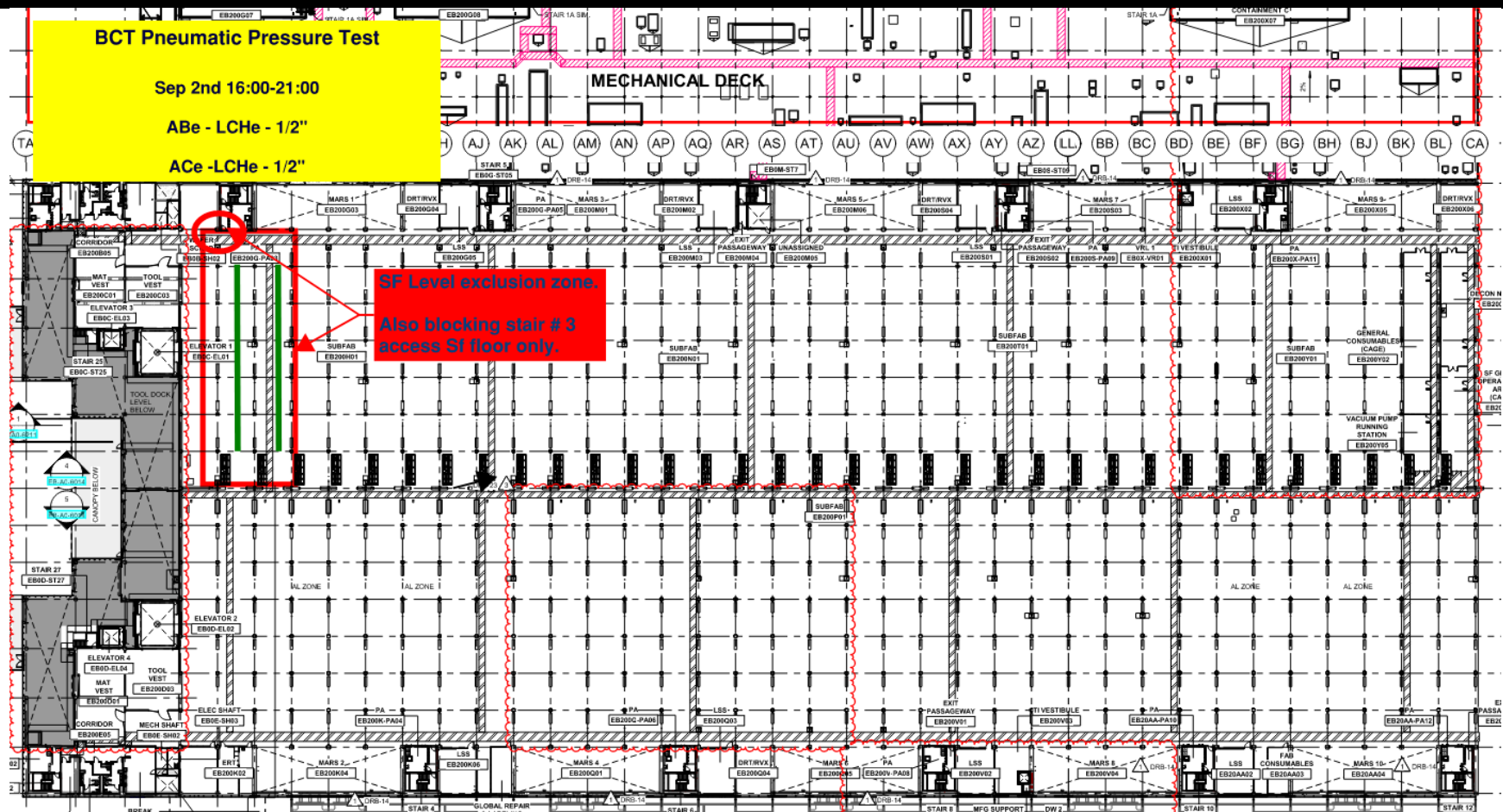
SUBFAB BUILDOUT MOD 1



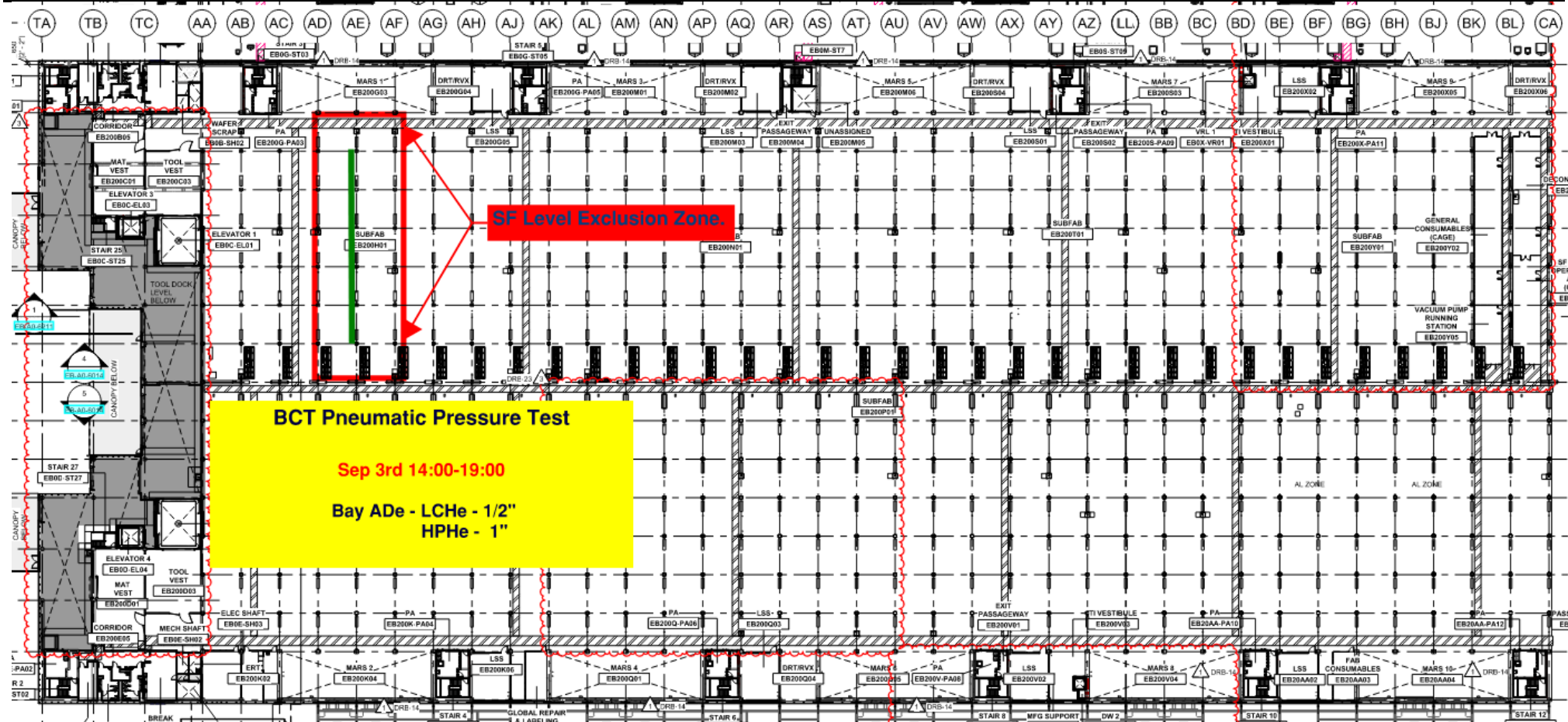
SUBFAB BUILDOUT MOD 2



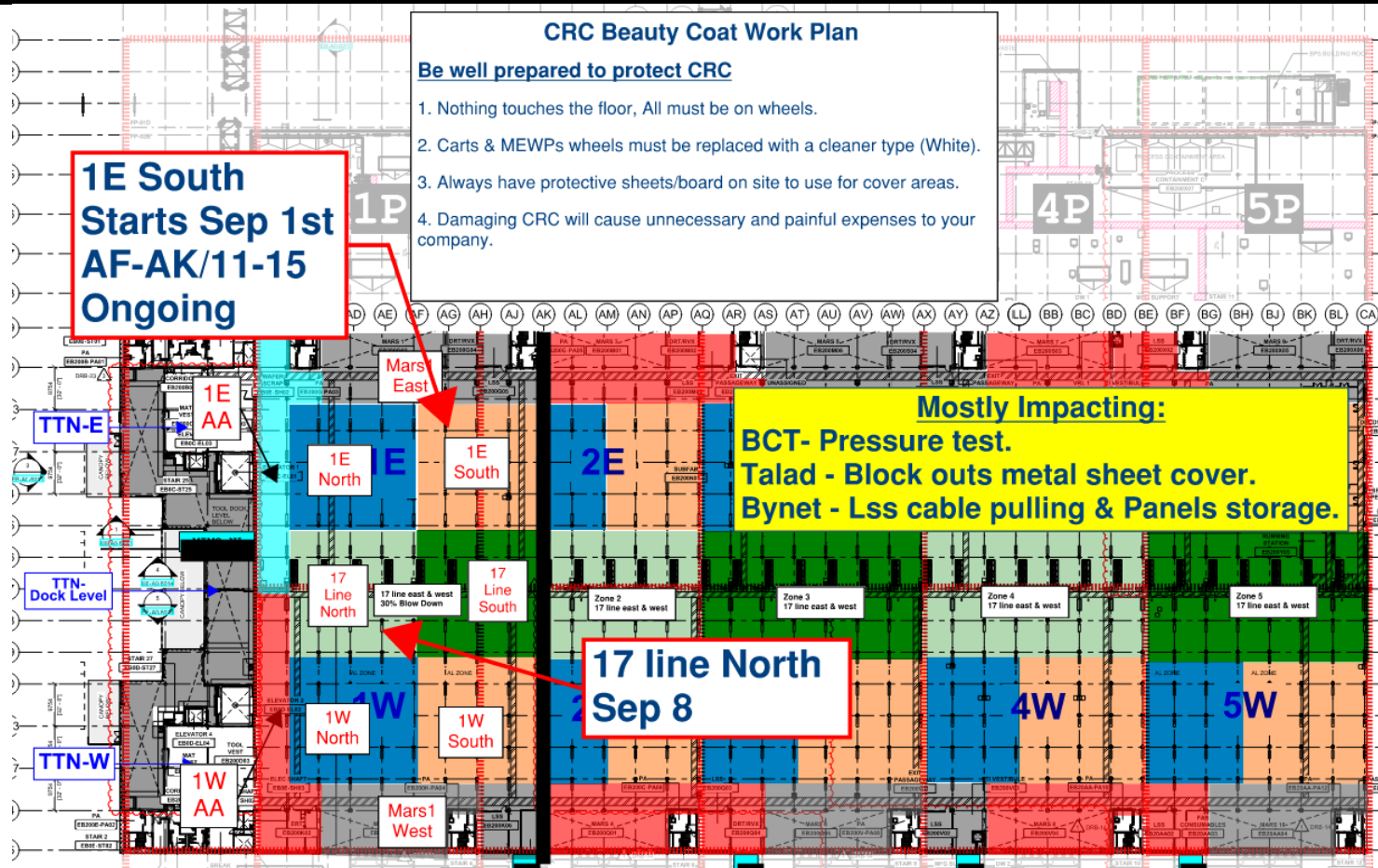
SUBFUB PRESSURE TEST EXCLUSION ZONES

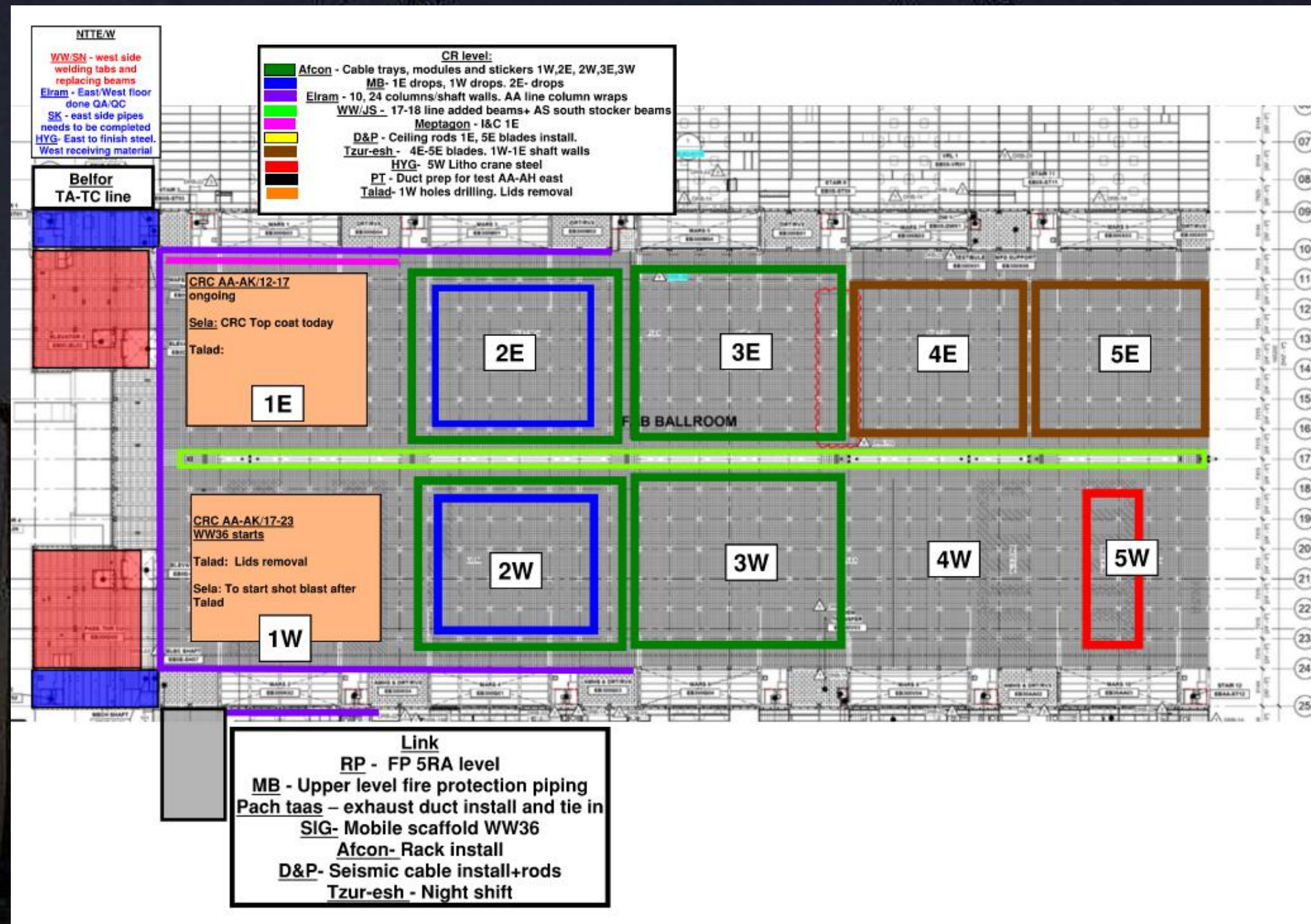


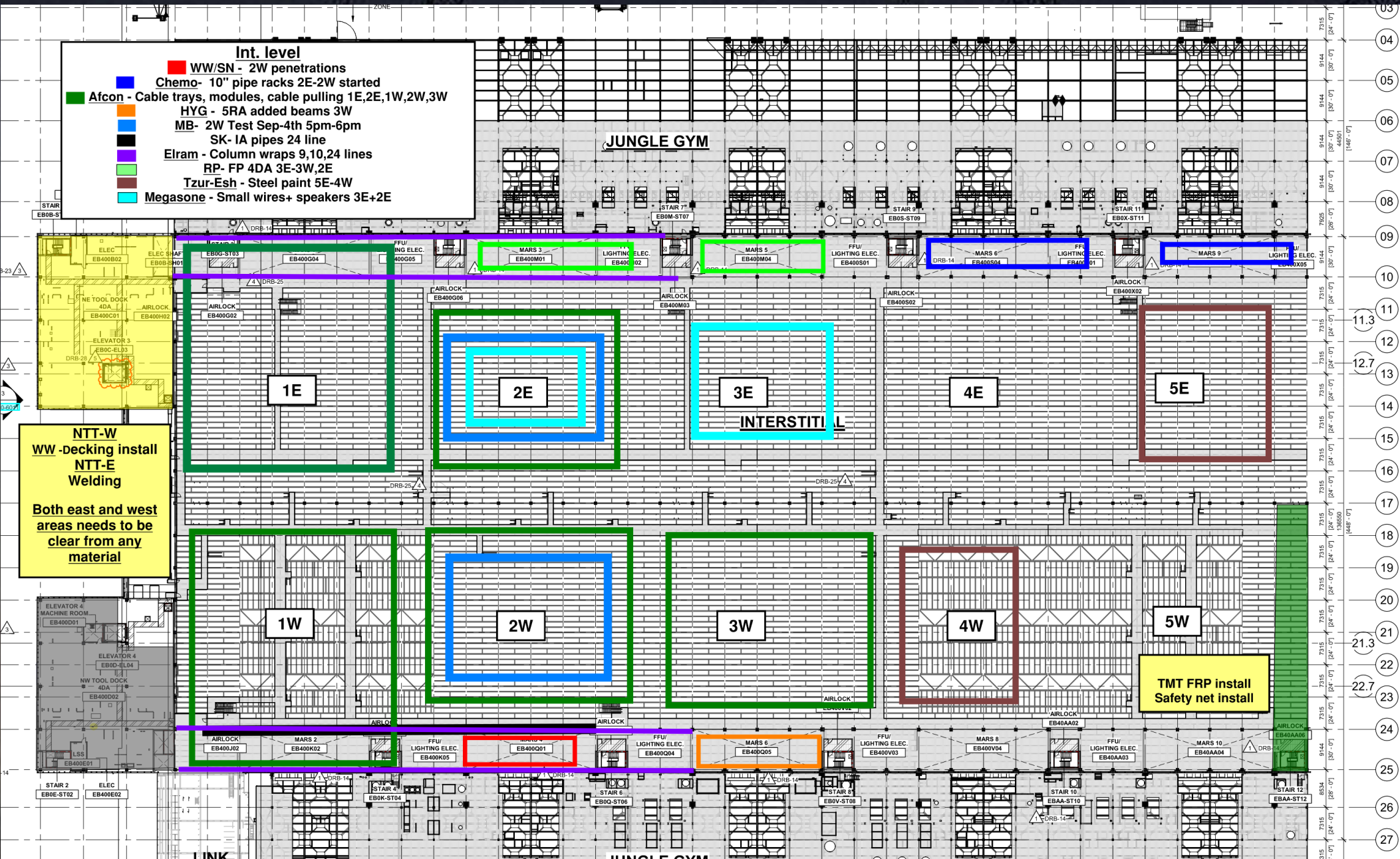
SUBFUB PRESSURE TEST EXCLUSION ZONES

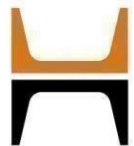


SUBFAB CRC TOPCOAT









Truss Yard:
RP and Tzur-Esh to start FP and paint trusses on night shift

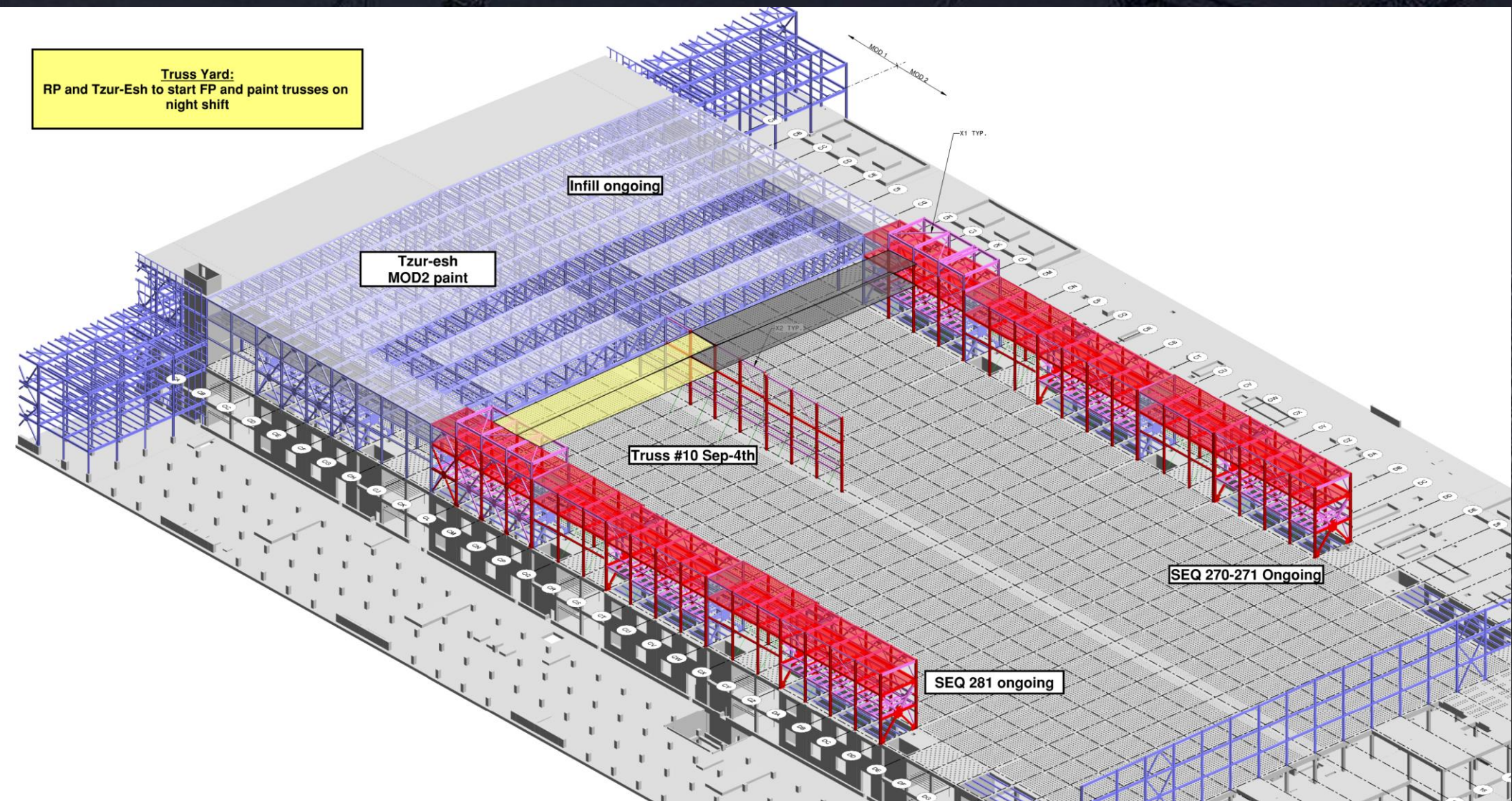
Infill ongoing

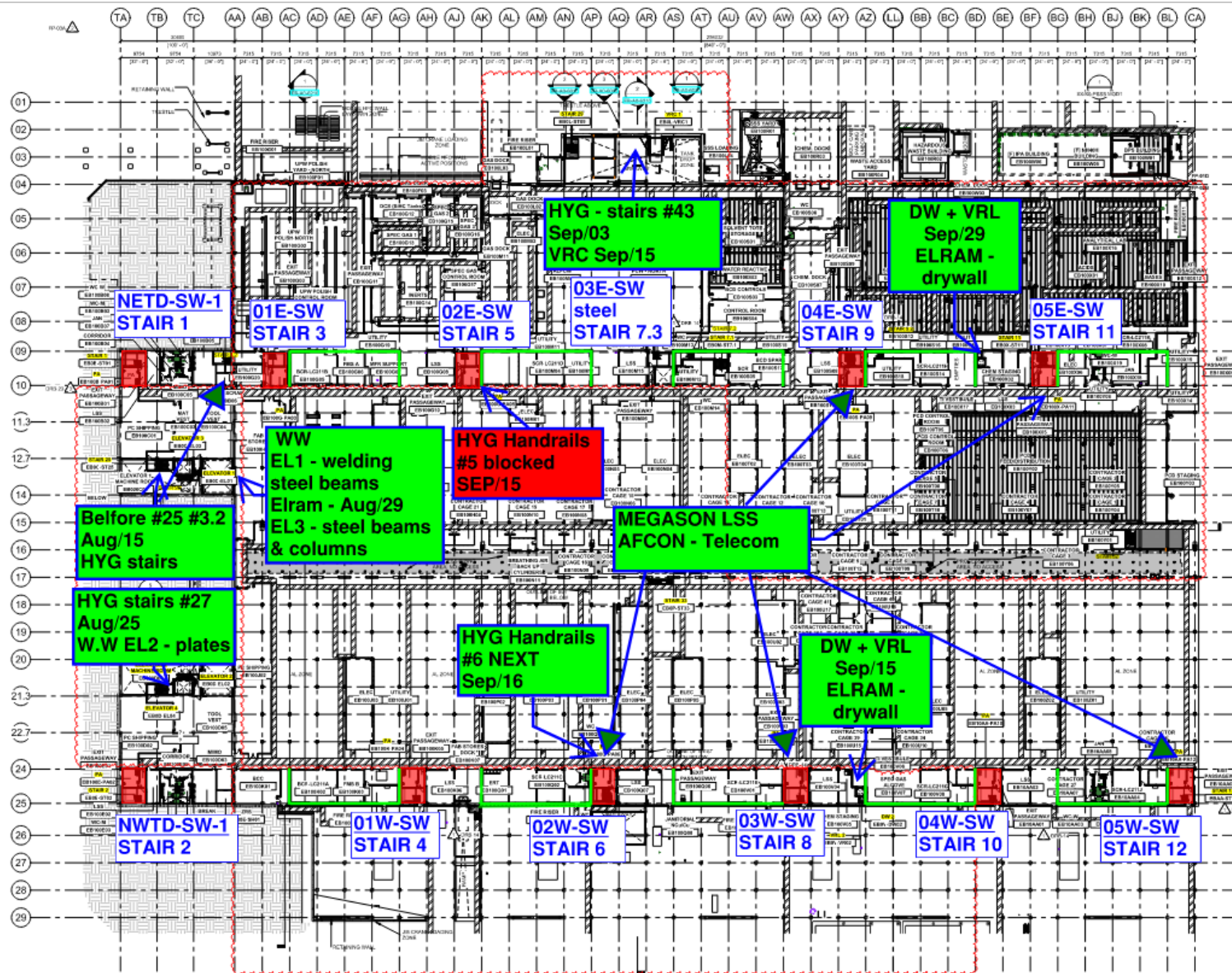
Tzur-esh
MOD2 paint

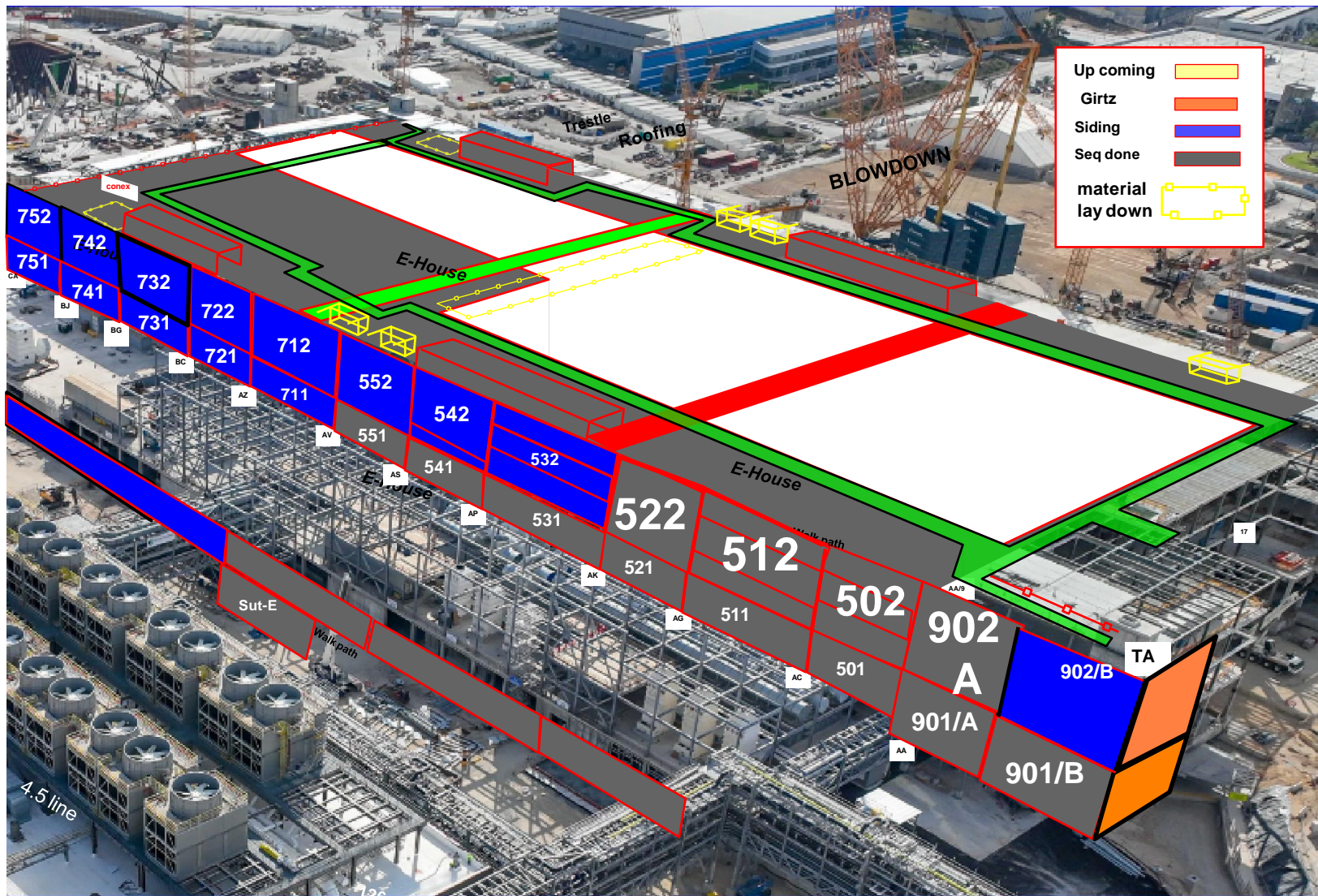
Truss #10 Sep-4th

SEQ 281 ongoing

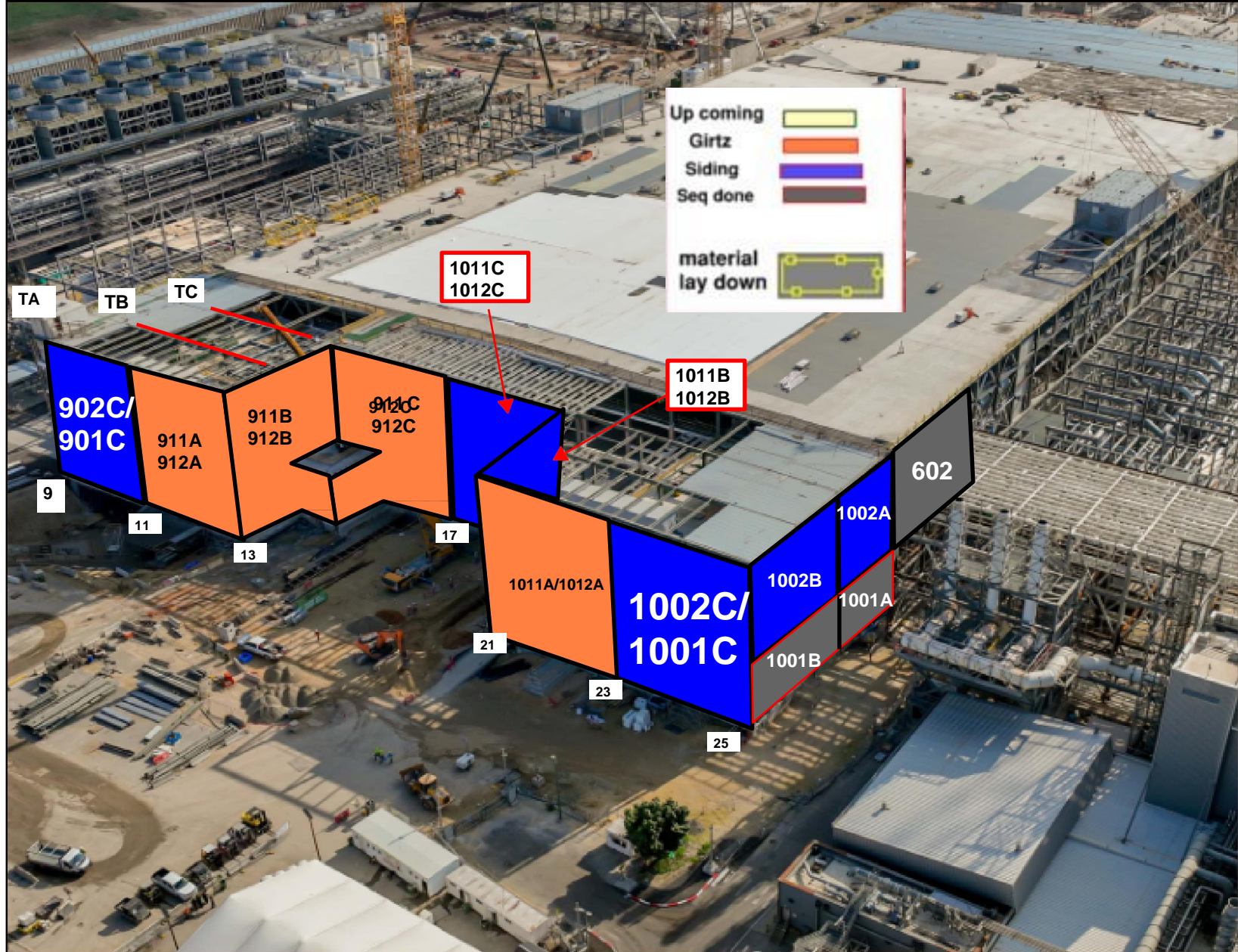
SEQ 270-271 Ongoing

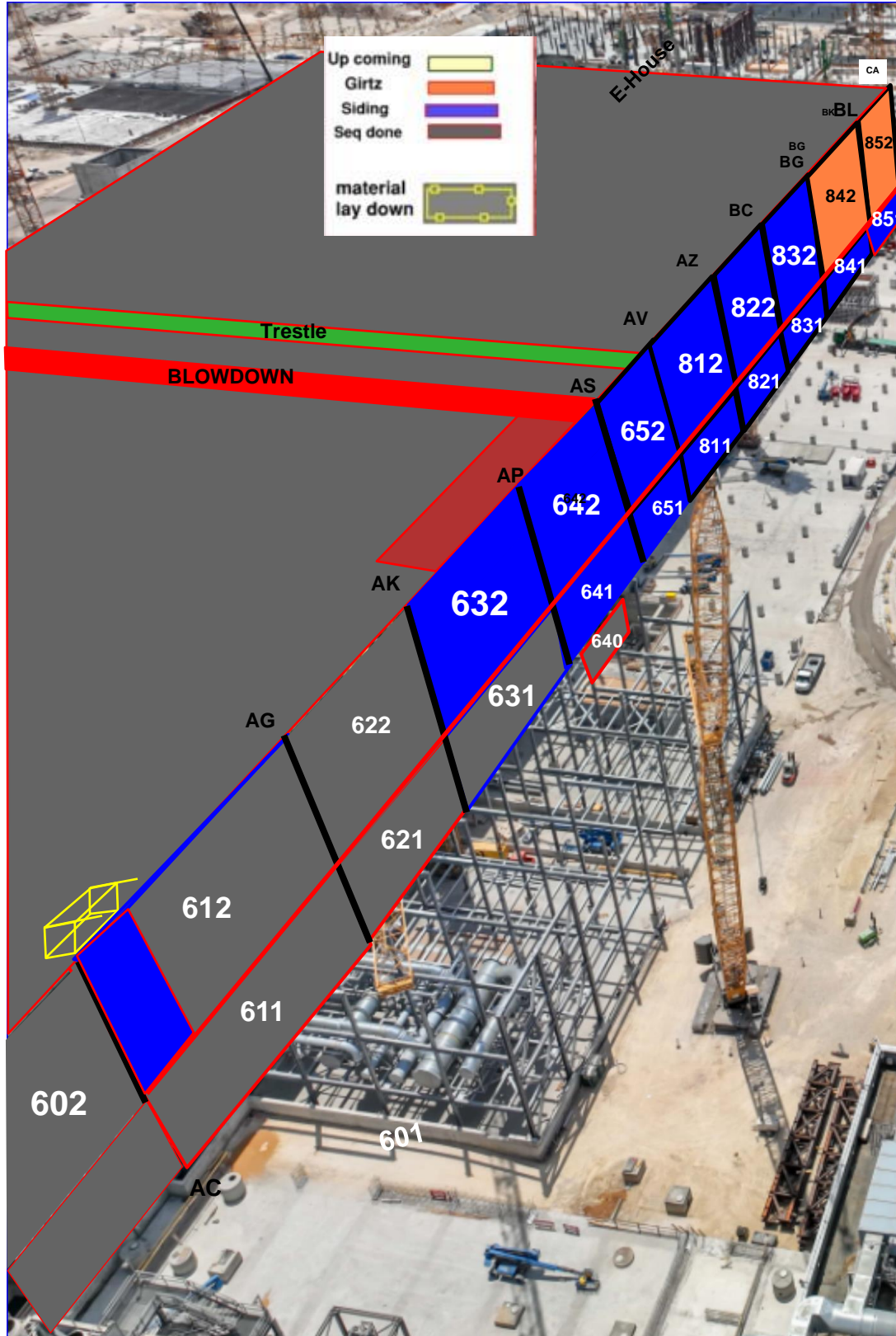






Walk path





[illegible]

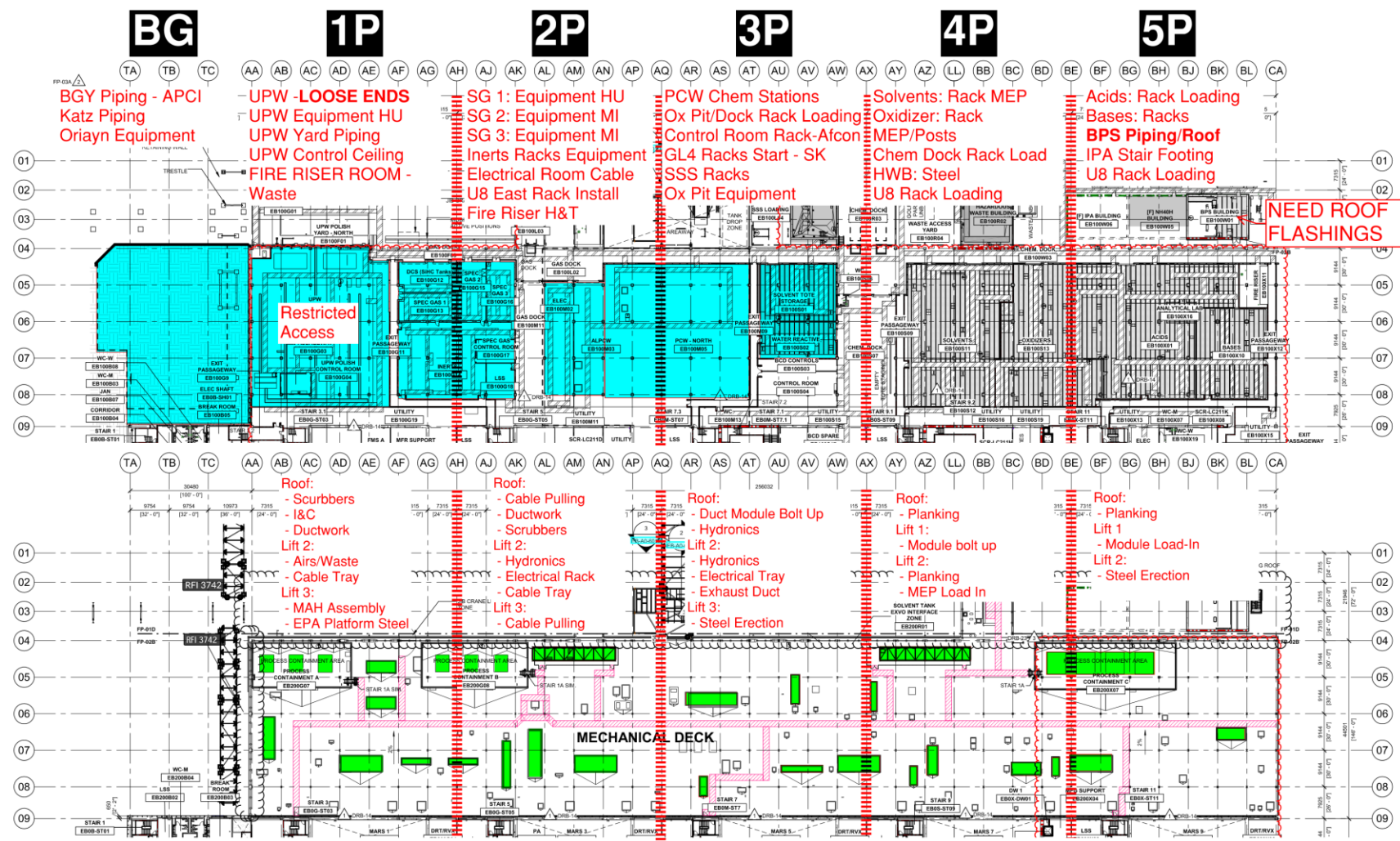
Siding - West FAB - JYG

[illegible]

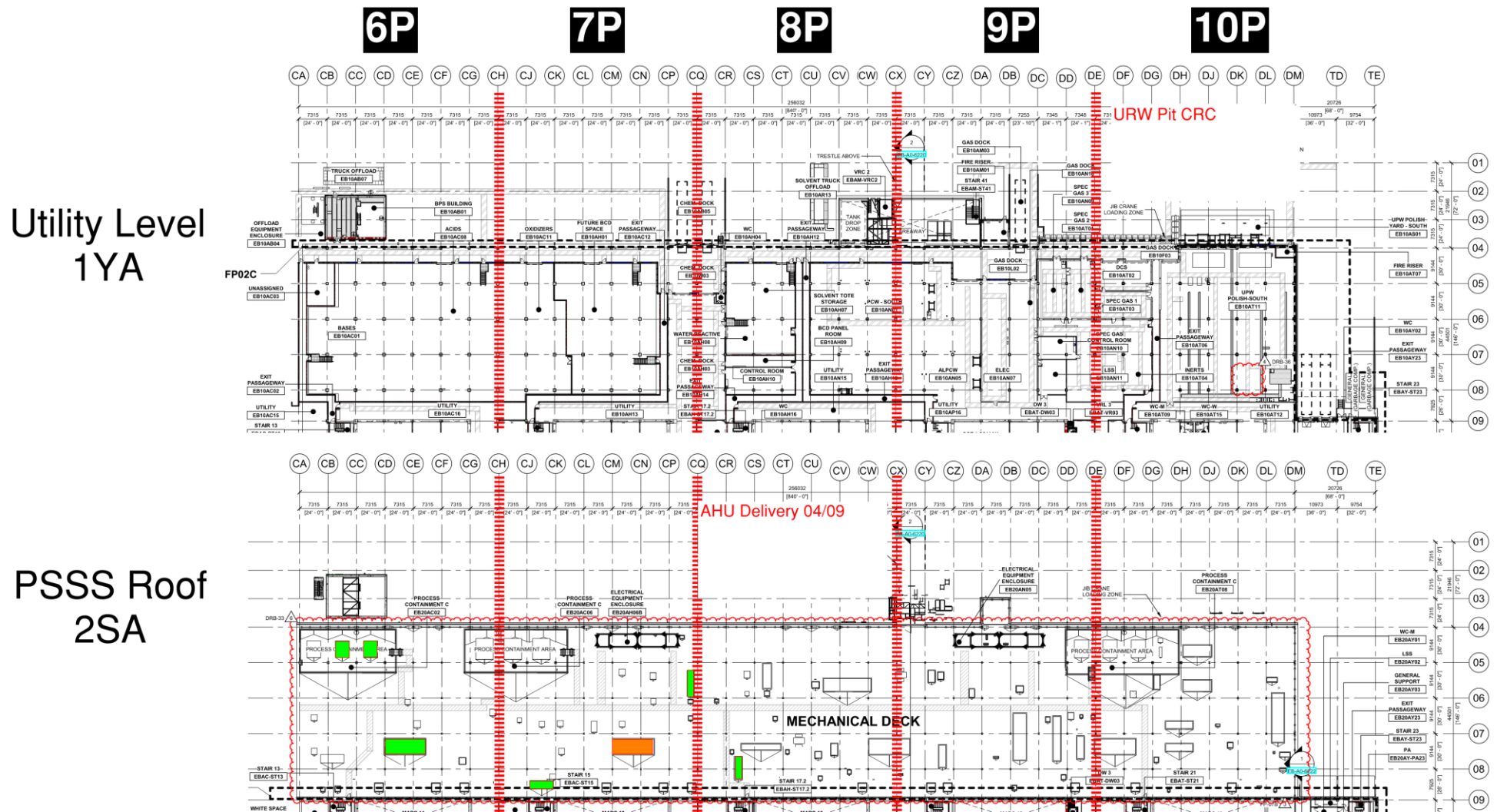
PSSS.1

Utility Level
1YA

PSSS Roof
2SA



PSSS.2

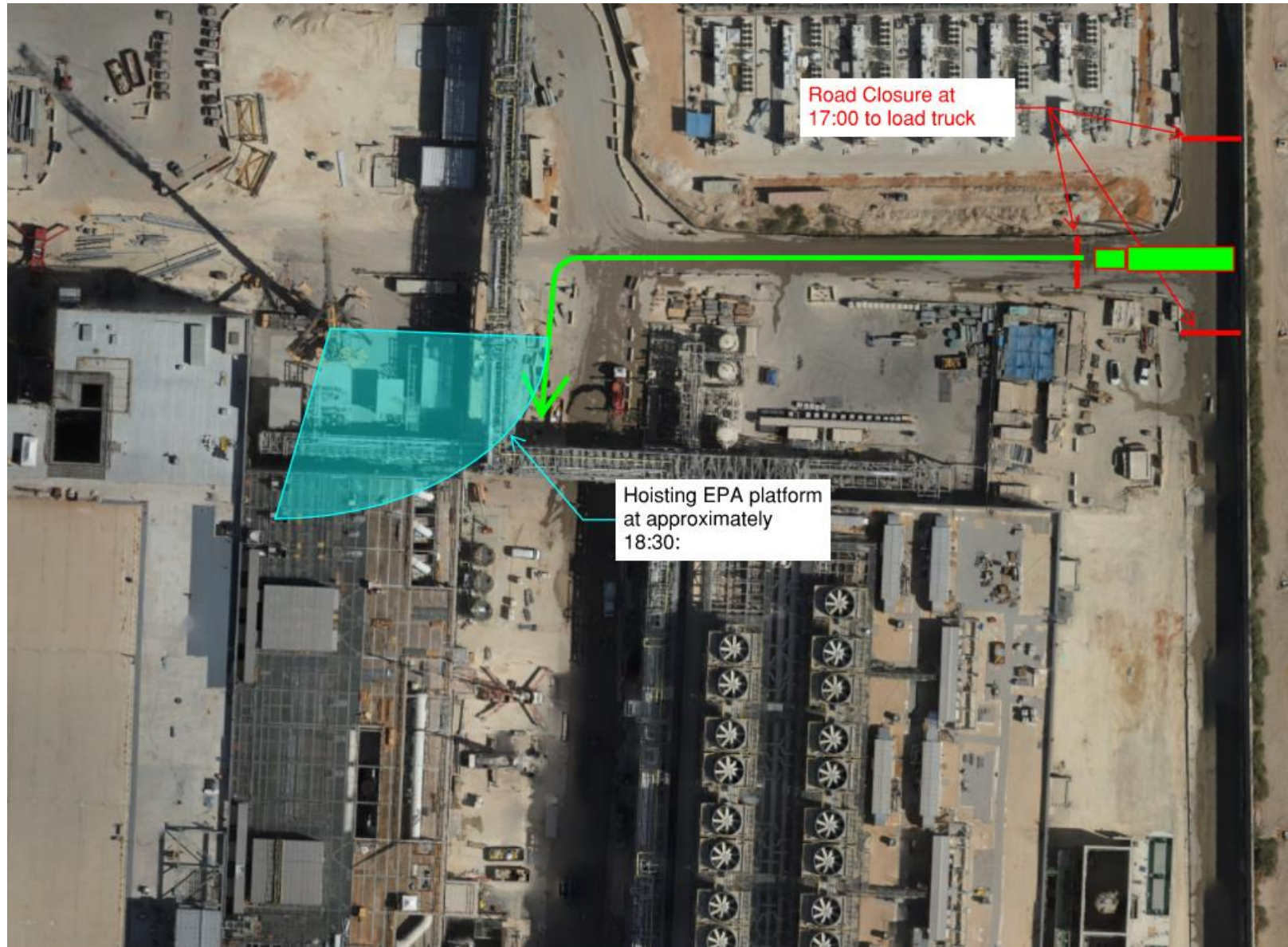


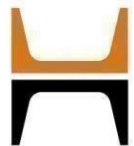
Utility Level 1YA

PSSS Roof
2SA

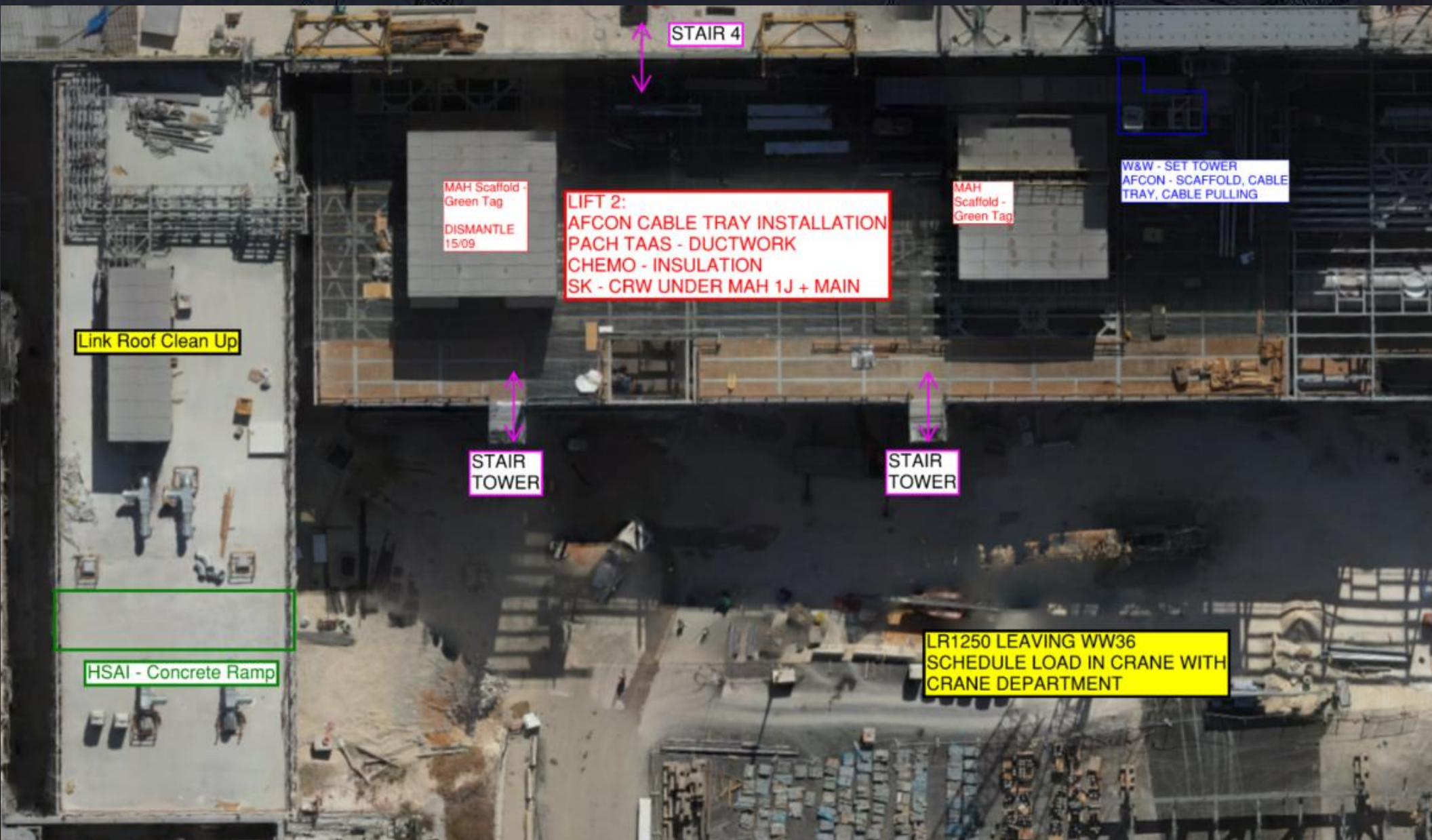
02/09 EPA Platform

17:00: Road
Closure of
East Road
18:30
Hoisting EPA
platform





WJG 01J, 02J LIFT 2 & 3

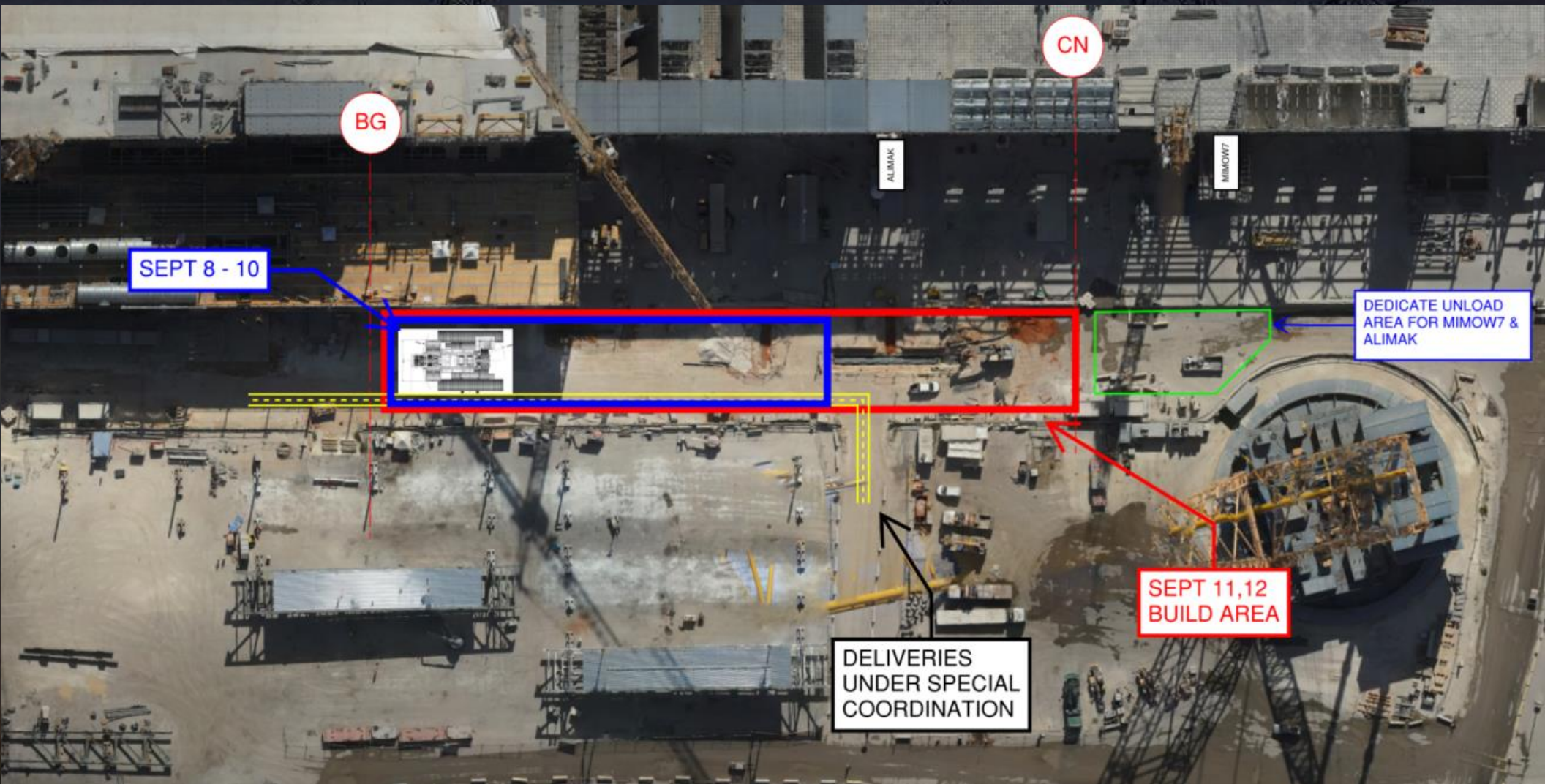


WJG 03J, 04J, 05J LIFT 2 & 3



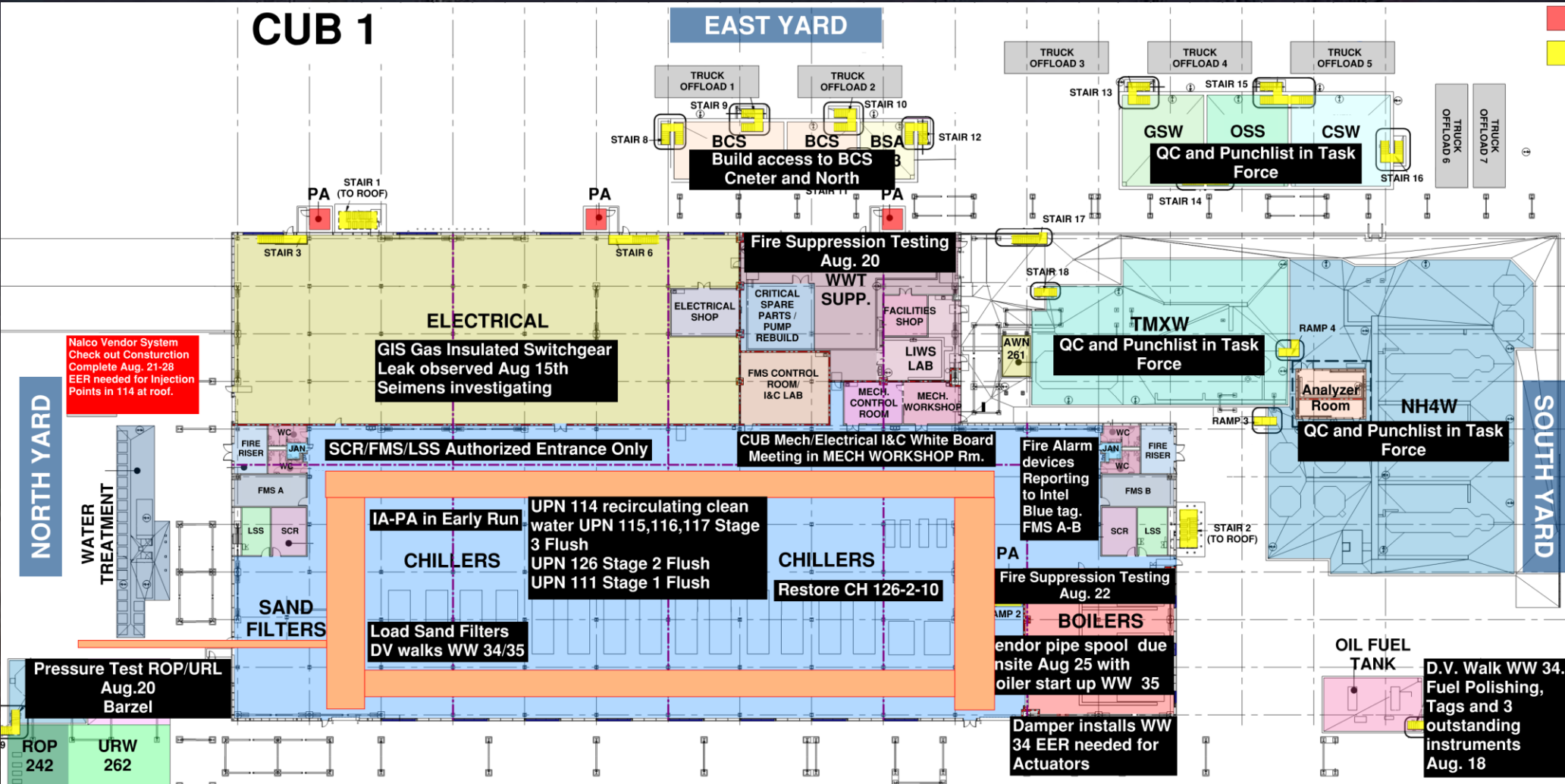
[illegible]

CC3800 Crane Build 08/09 – 11/09

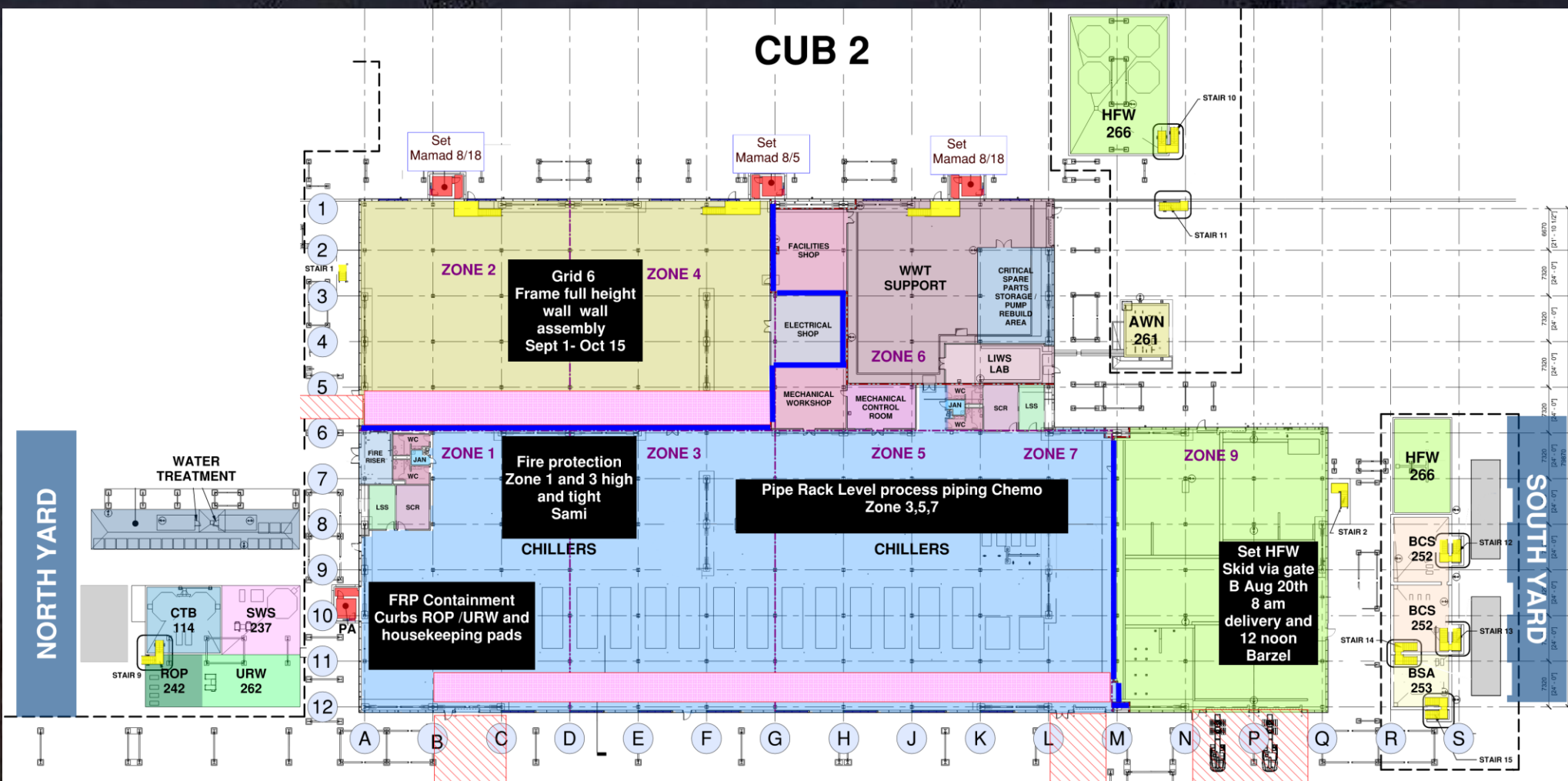


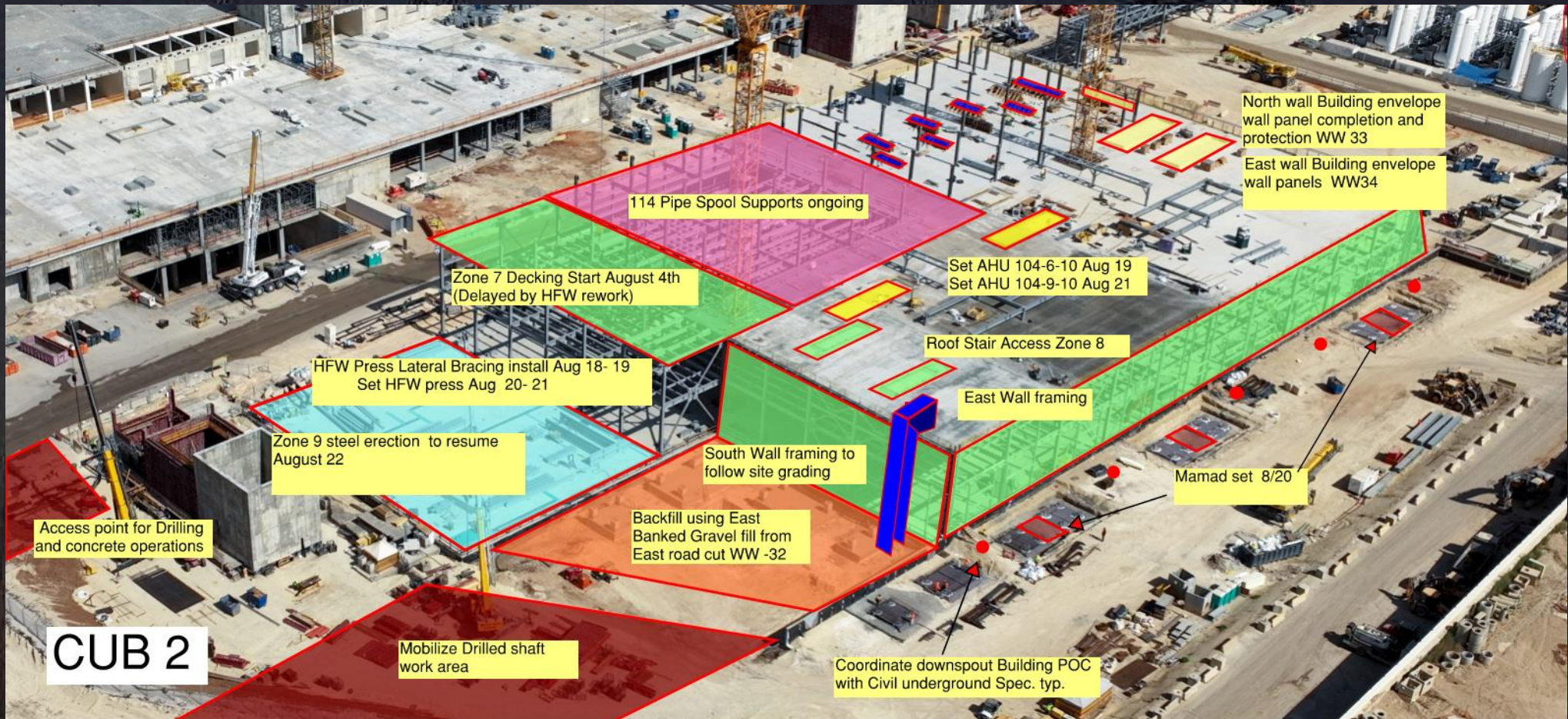


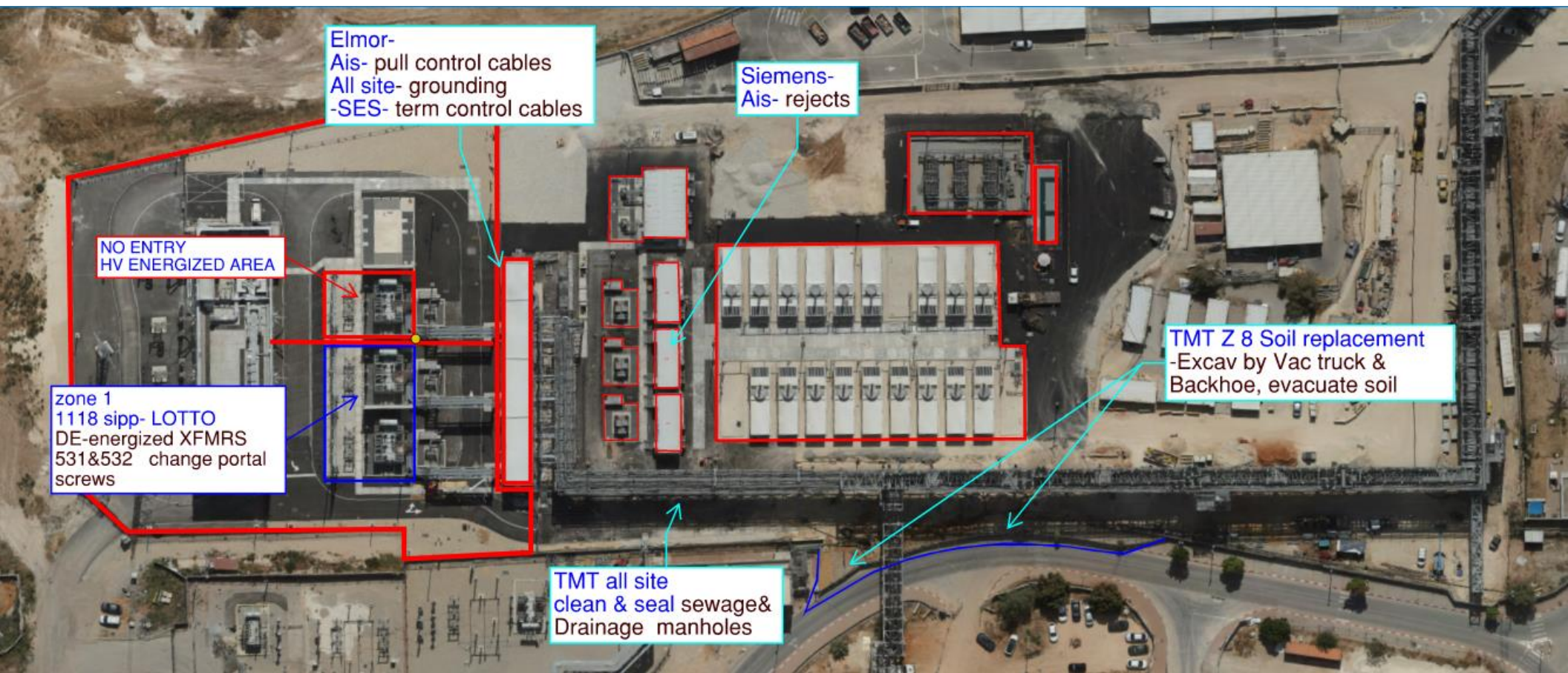
CUB 1











Elmor-
Ais- pull control cables
All site- grounding
-SES- term control cables

Siemens-
Ais- rejects

NO ENTRY
HV ENERGIZED AREA

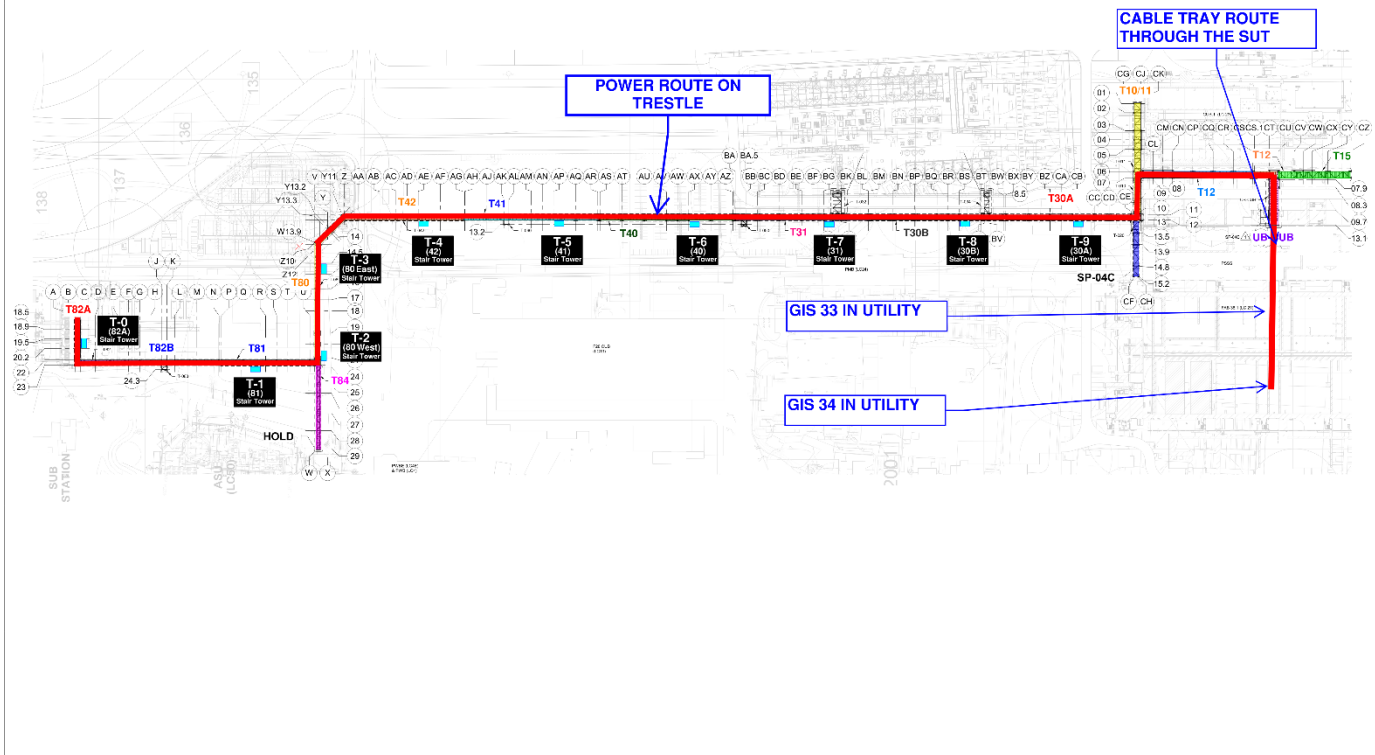
zone 1
1118 sipp- LOTTO
DE-energized XFMRS
531&532 change portal
screws

TMT Z 8 Soil replacement
-Excav by Vac truck &
Backhoe, evacuate soil

TMT all site
clean & seal sewage &
Drainage manholes

FAB GIS 33&34 PERMENENT POWER

September 3rd and 5th 7:00am to 8:00am.





HOFFMAN CONSTRUCTION COMPANY

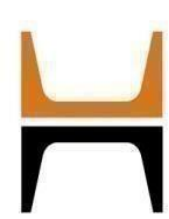


Lesico 12" natural gas pipe pressure test exclusion zone

Wednesday, September 4th 18:00 -Thursday, September 5th 01:00

All access to vehicles within exclusion zone will cut off at 17:50





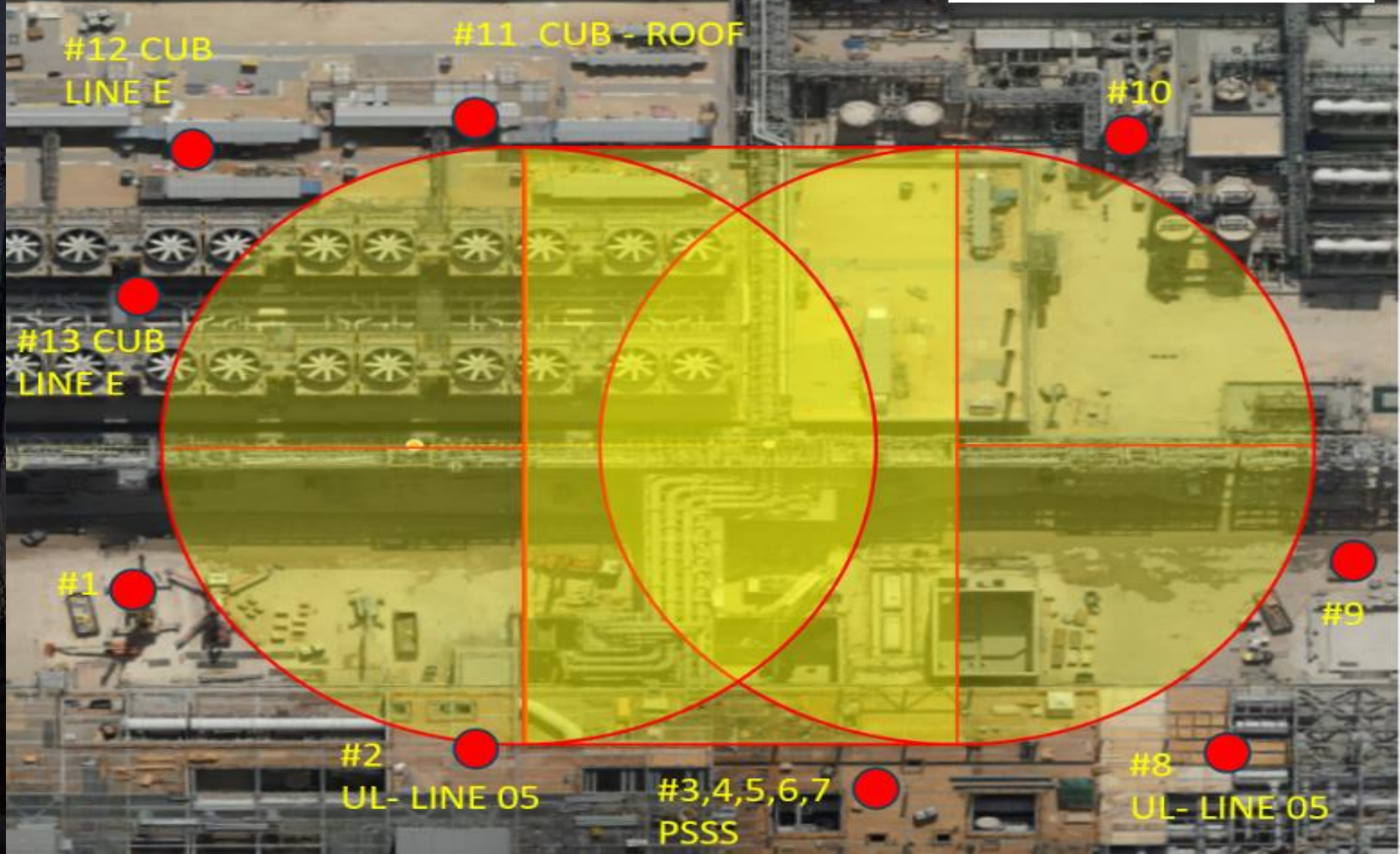
HOFFMAN CONSTRUCTION COMPANY

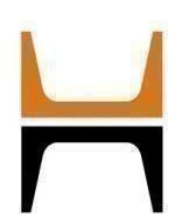


HOFFMAN
Sparrow  

Trestle Lesico NDT-10"-8" 4 welds 04/09/24

22:00-05:00

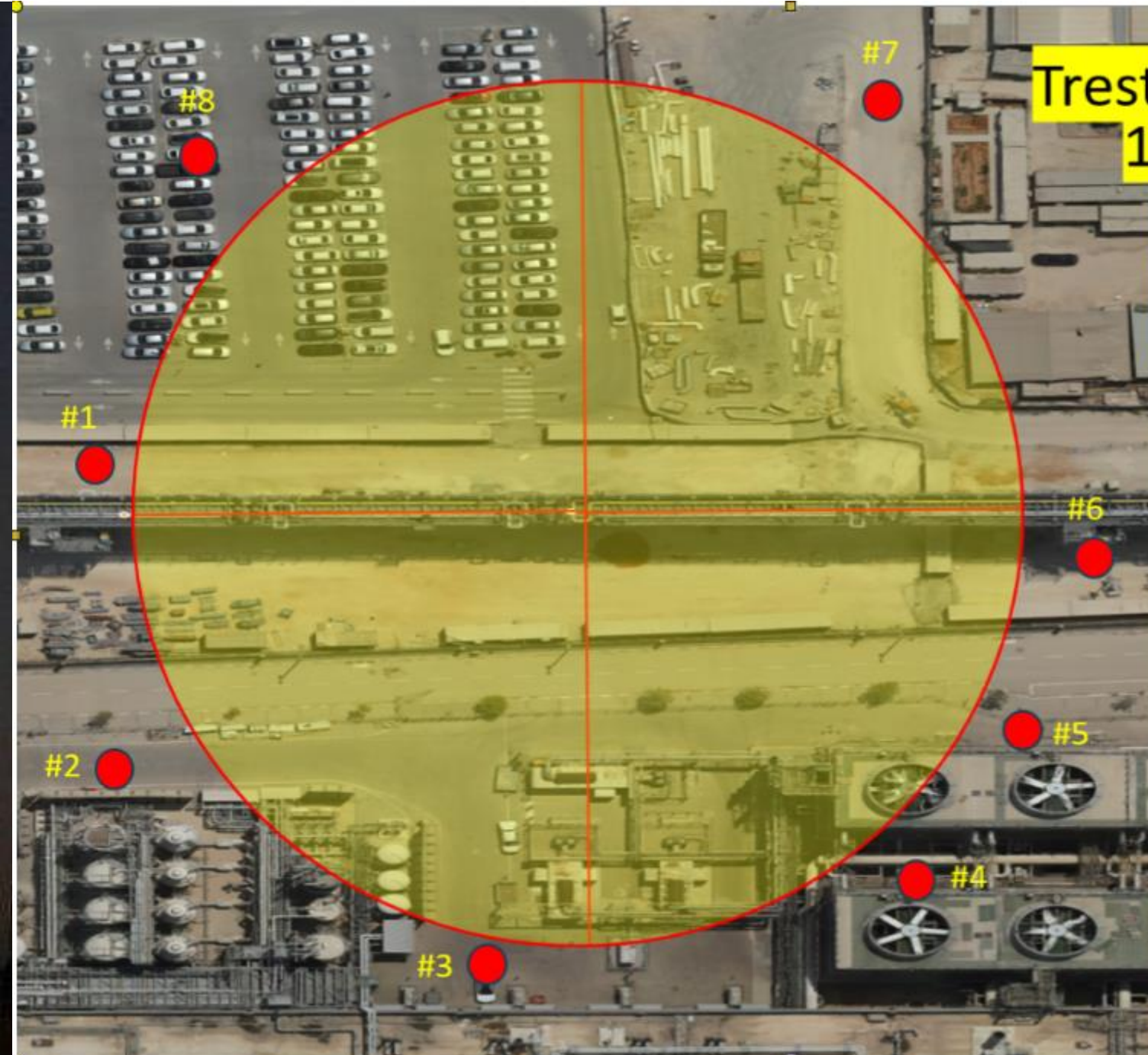




HOFFMAN CONSTRUCTION COMPANY



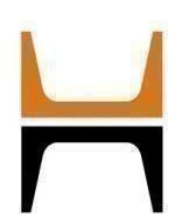
HOFFMAN
Sparrow  



**Trestle Lesico NDT-
12", 2 welds**

2/09/2024

19:00-22:00



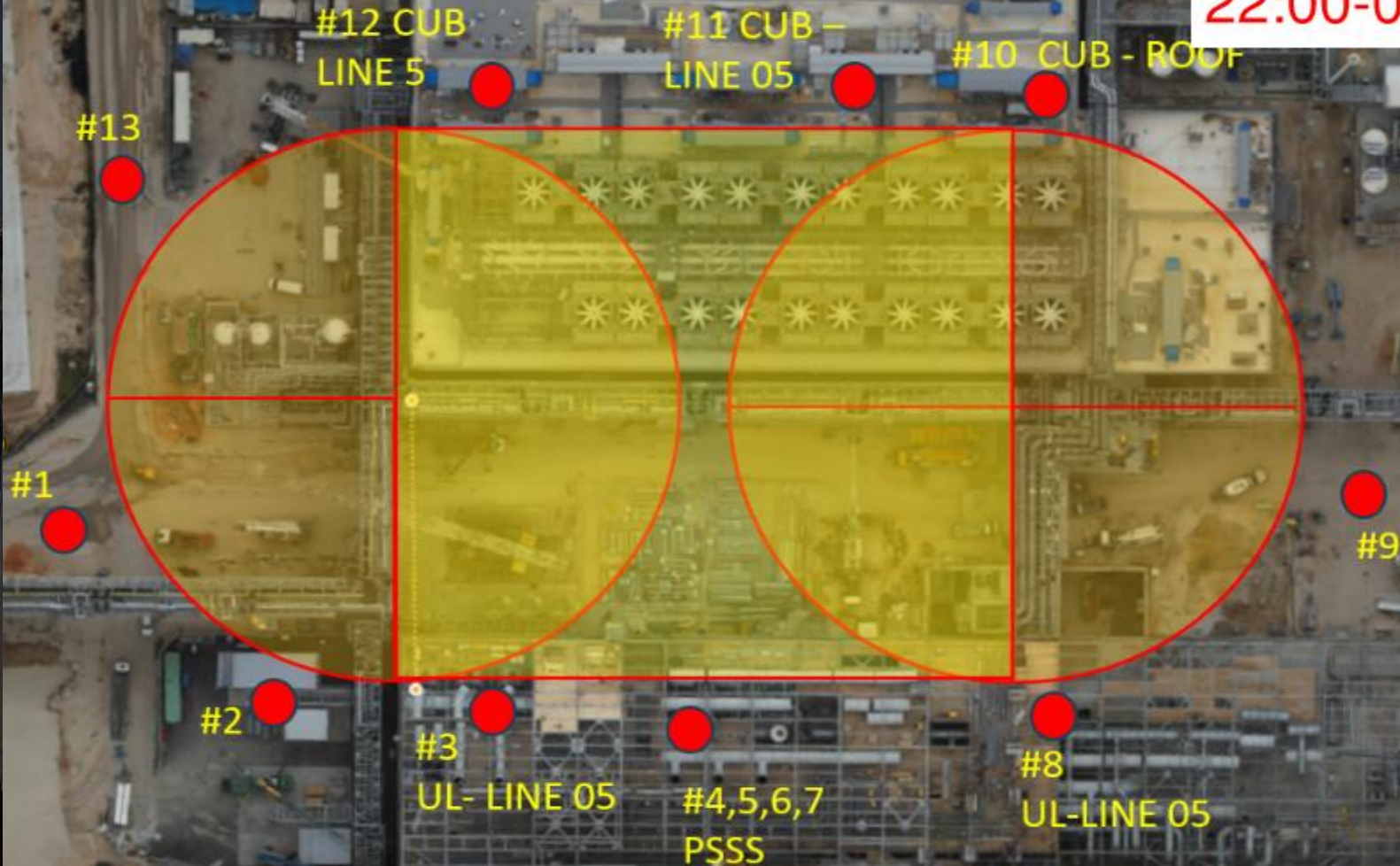
HOFFMAN CONSTRUCTION COMPANY



HOFFMAN
Sparrow  

Trestle Lesico NDT-10", 7 welds 05/09/24

22:00-05:00



From main
kiosk

Site temporary power

Legend :

- 22KV Line
- 400V Line
- 109 - Kiosk
- Lift Station

Fab 38.2

Fab 38.1

TC-9
On Gen
power
10.09

630A
SE
03.09

TC-7
On Gen power
10.09

630A
NE
03.09

TC-5
Done

TC-3
Done

TC-10
Done

630A
SW
Done

TC-8
Done

630A
NW
Done

TC-6
Done

TC-4
Done

TC-13
Done

Cub 2

TC-12
Done

Cub 1

From main

To 115



Daily Coordination Meeting

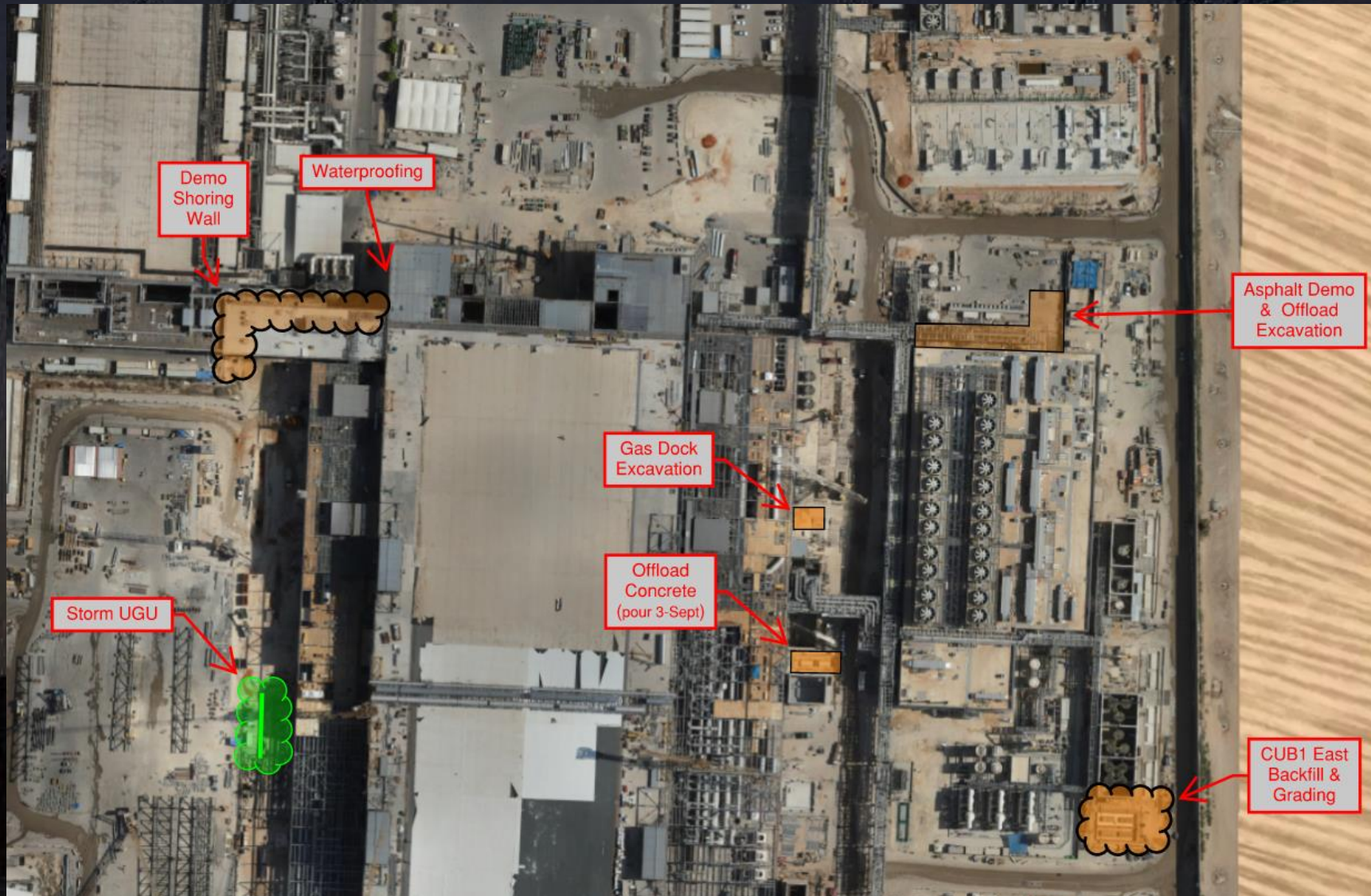
Site Logistics
North Gate B



Daily Coordination Meeting

Site Logistics

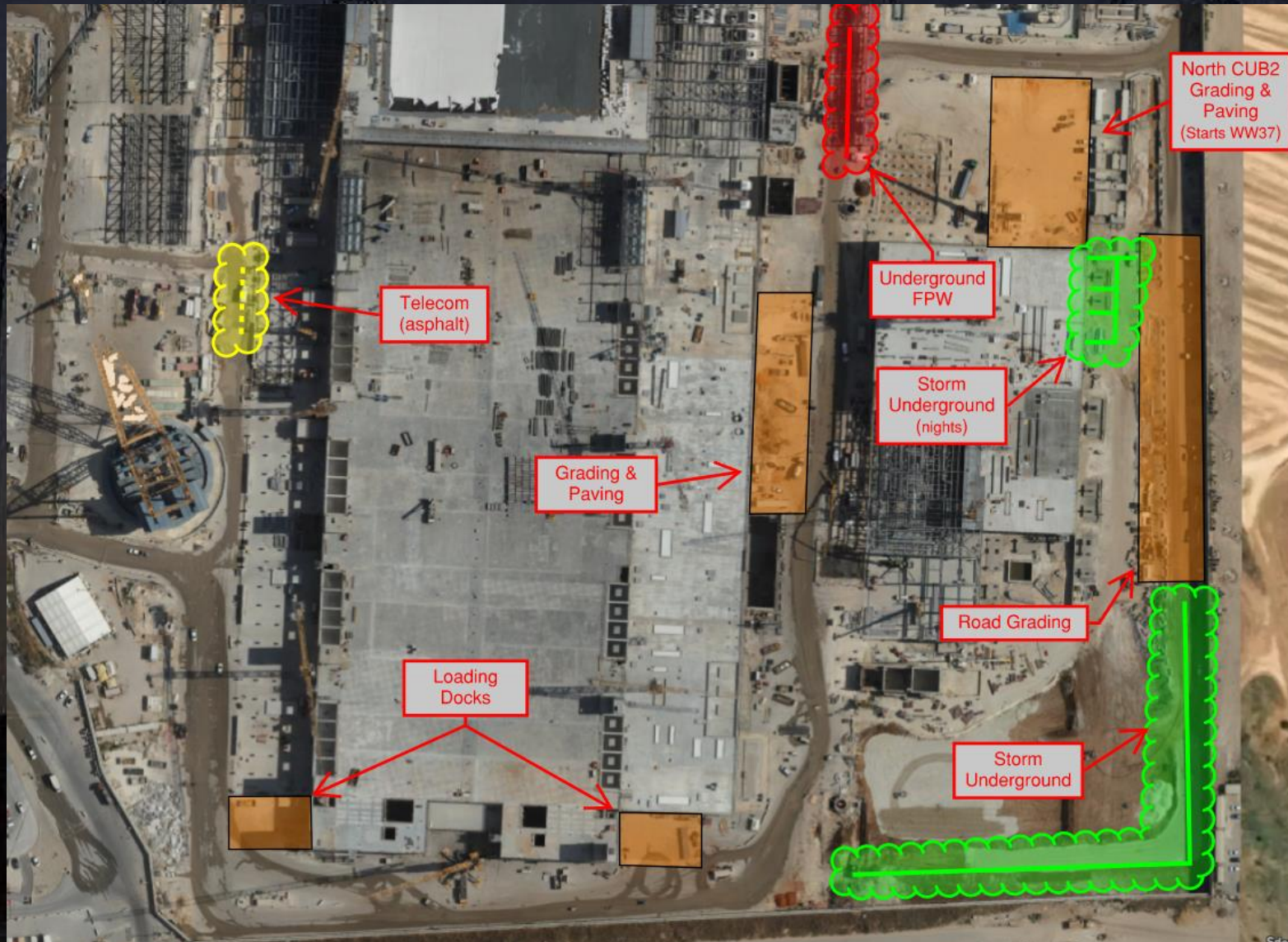
North



Daily Coordination Meeting

Site Logistics

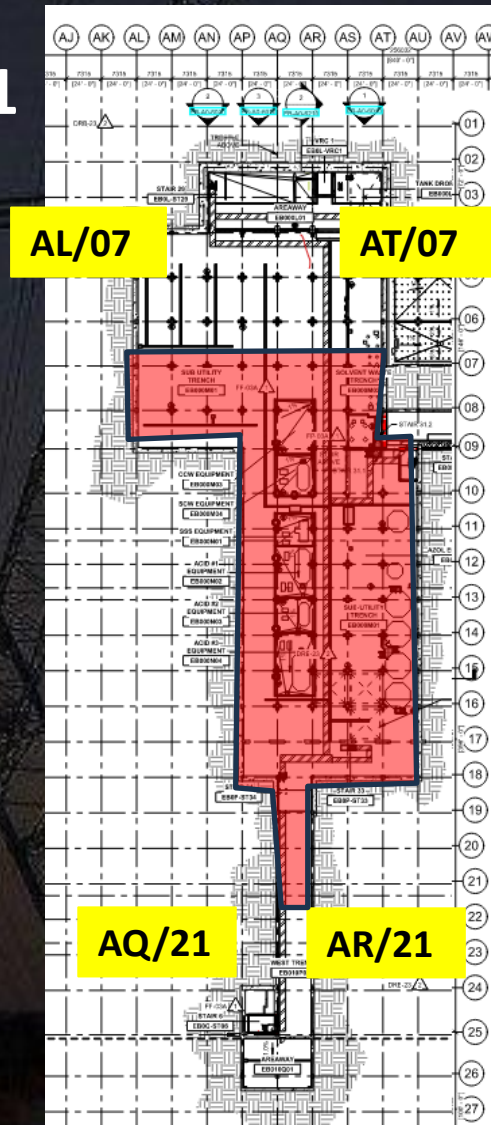
South



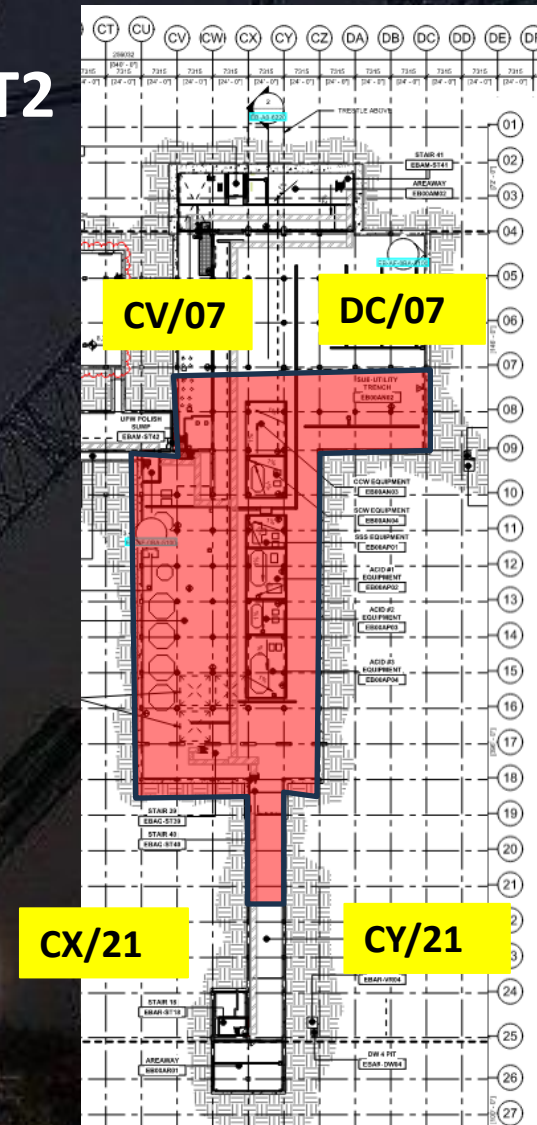
Daily Coordination Meeting

Site Logistics - Protected Areas (SUT Level)

SUT1

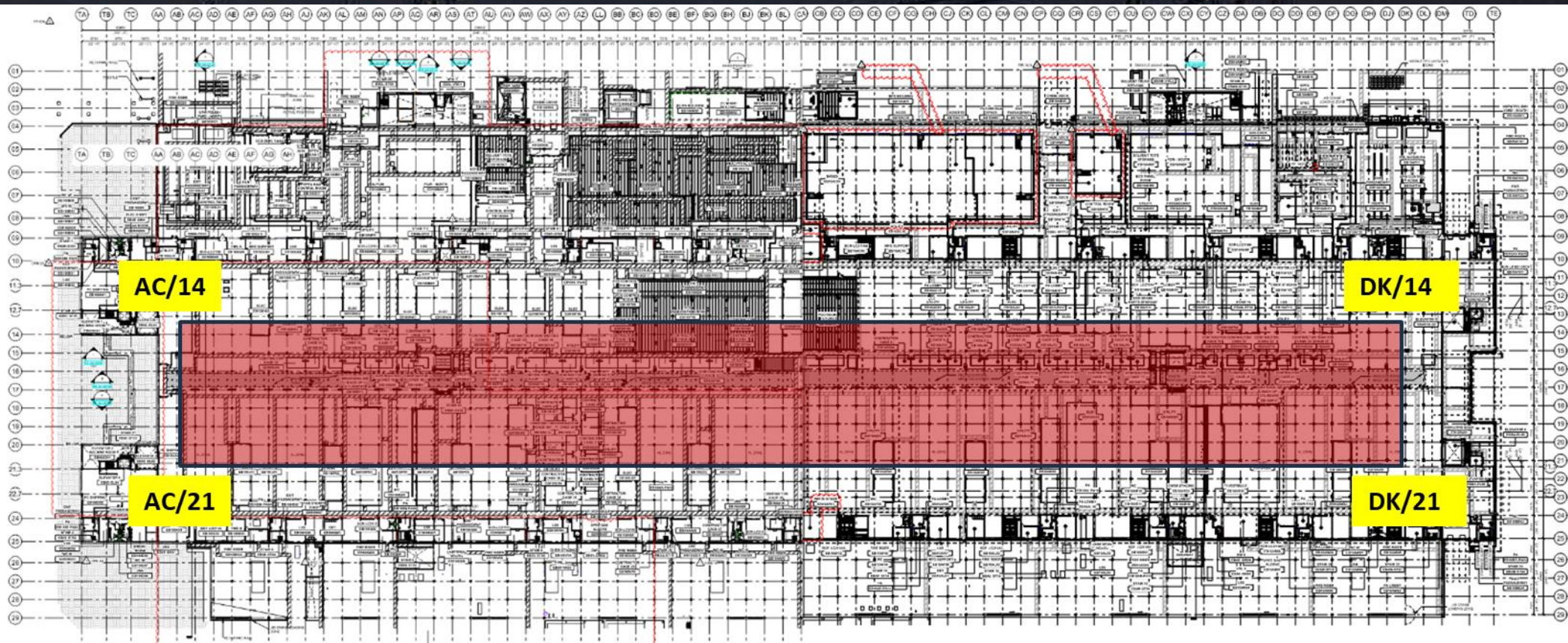


SUT2



Daily Coordination Meeting

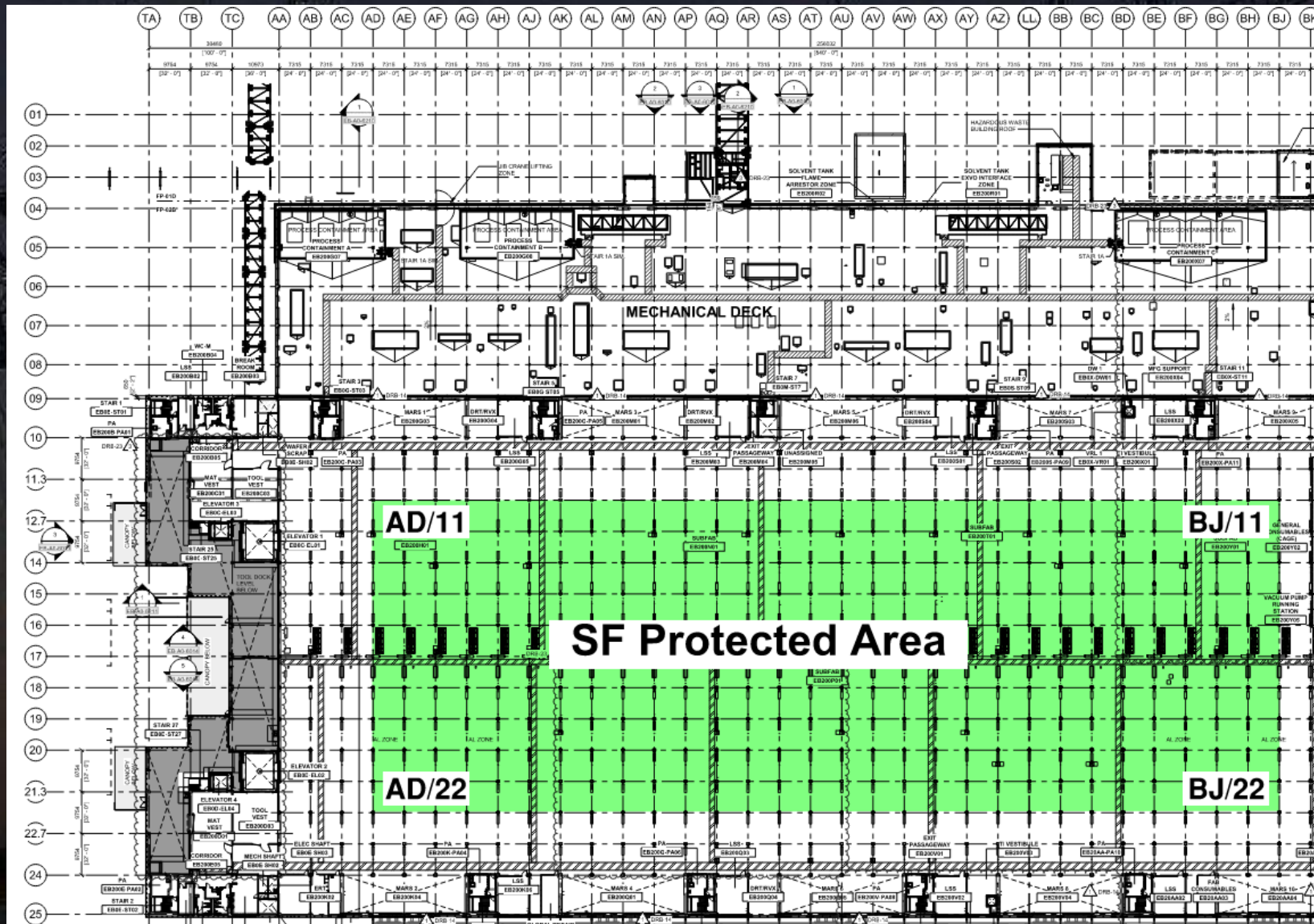
Site Logistics - Protected Areas (Utility Level)





Daily Coordination Meeting

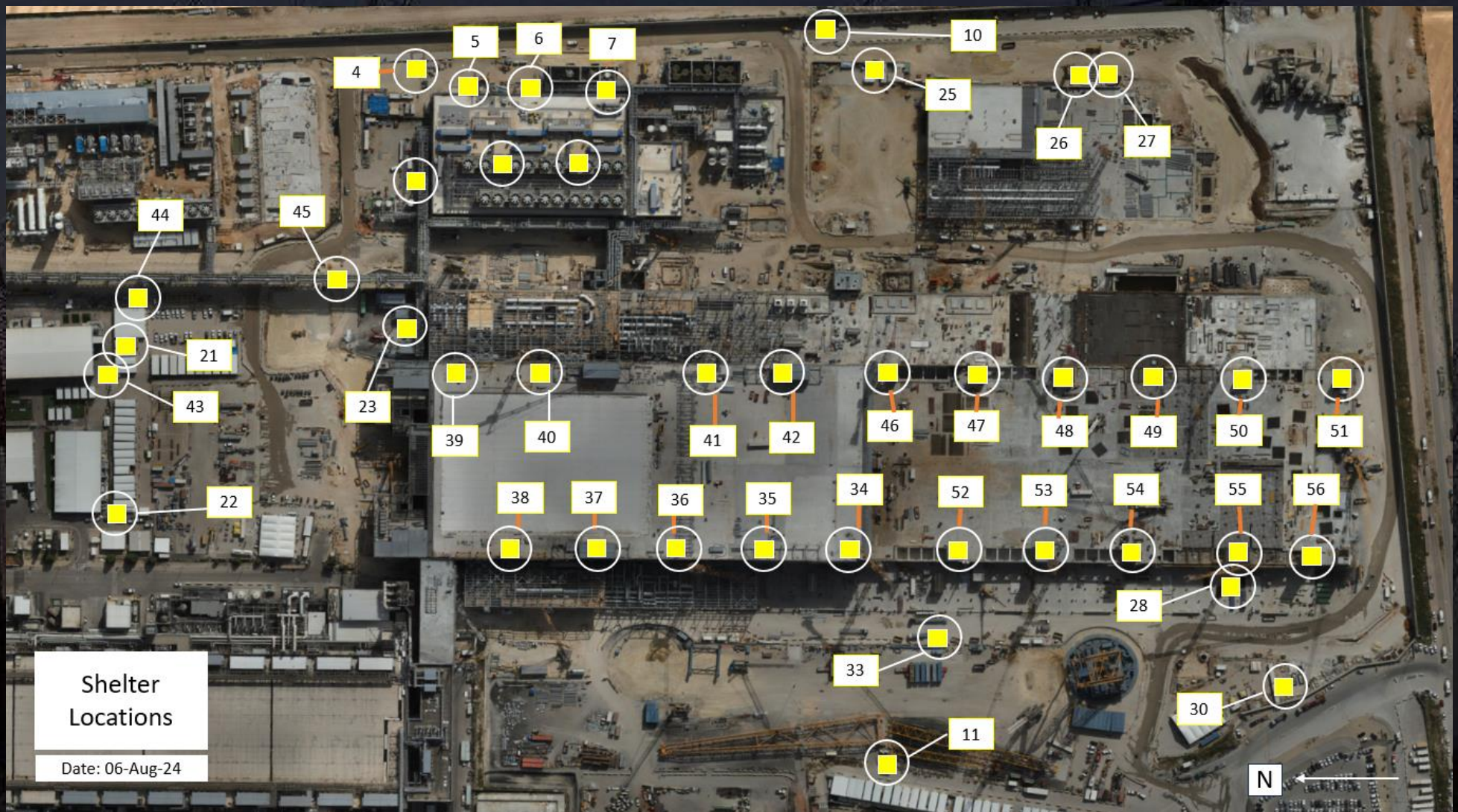
Site Logistics - Protected Areas (Subfab Level)



Daily Coordination Meeting

Site Logistics

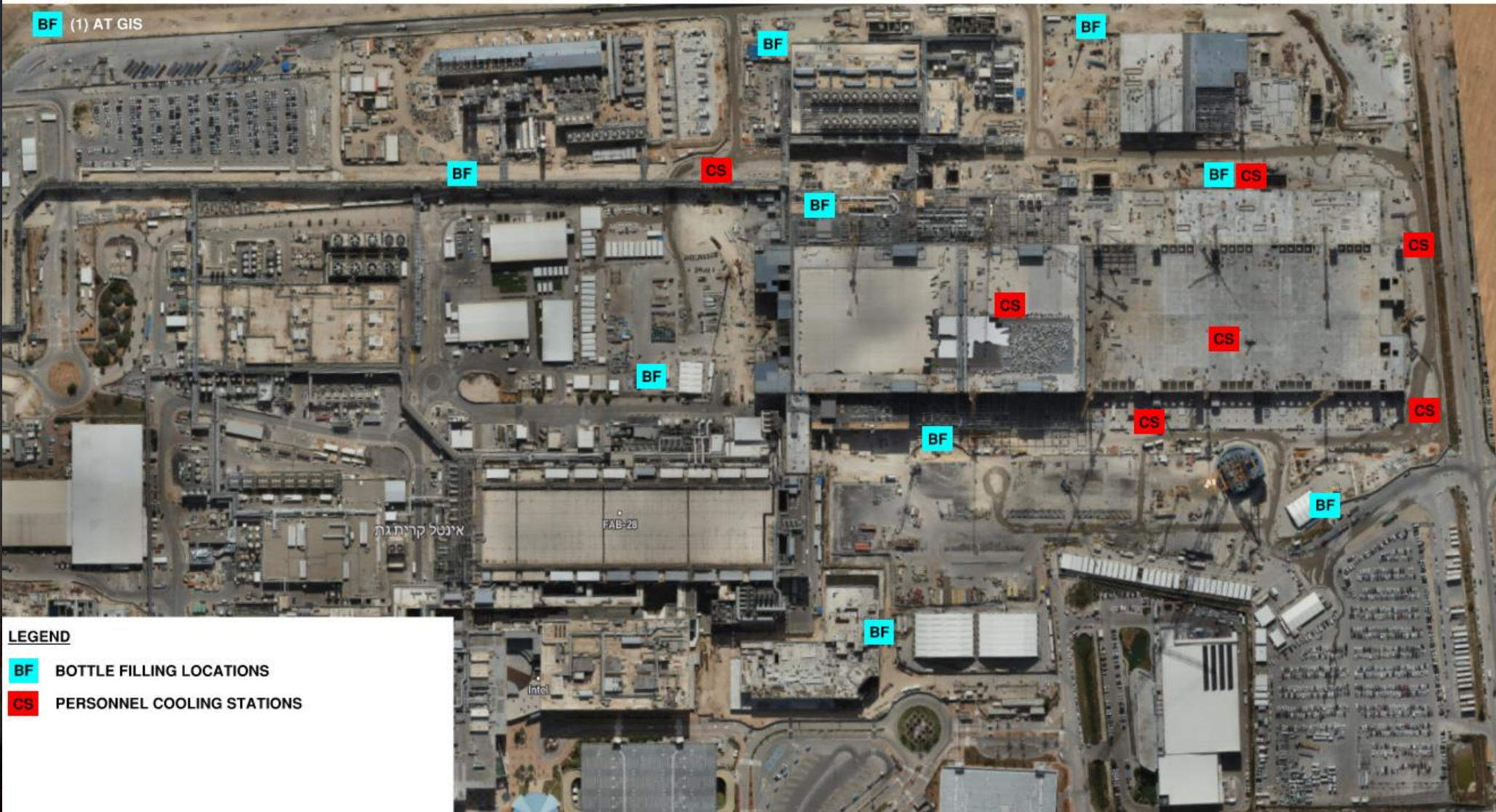
Protected Areas



Daily Coordination Meeting

WATER BOTTLE FILLING & PERSONNEL COOLING STATIONS

BF (1) AT GIS








Communication- Spotters and Operators


- Operators are responsible for communicating with their spotters what their intention is before they move their equipment.
- This will help the spotter to ensure they are checking that it is clear before the equipment moves.
- Spotters need to stop other equipment and pedestrians from entering the path that the operator wants to take.
- Spotters should not be allowing pedestrians to enter the path that the equipment is taking.
- If spotters are not able to be heard by the operator, alternative methods of communication need to be established. Many of the areas are too loud, and the operators up too high to be able to hear their spotter- this doesn't work!
- Hand signals, walk-talkies, etc. need to be used to ensure communication can still occur.


Heat Index- September 3rd

	temperature (°F)																
	80	82	84	86	88	90	92	94	96	98	100	102	104	106	108	110	
Relative Humidity (%)	40	80	81	83	85	88	91	94	97	101	105	109	114	119	124	130	136
	45	80	82	84	87	89		96	100	104	109	114	119	124	130	137	
	50	81	83	85	88	91	95	99	103	108	113	118	124	131	137		
	55	81	84	86	89	93	97	101	106	112	117	124	130	137			
	60	82	84	88	91	95	100	105	110	116	123	129	137				
	65	82	85	89	93	98	103	108	114	121	128	136					
	70	83	86	90	95	100	105	112	119	126	134						
	75	84	88	92	97	103	109	116	124	132							
	80	84	89	94	100	106	113	121	129								
	85	85	90	96	102	110	117	126	135								
	90	86	91	98	105	113	122	131									
95	86	93	100	108	117	127											
100	87	95	103	112	121	132											

 Caution

 Extreme Caution

 Danger

 Extreme Danger

Extreme Caution

- Ensuring water and shaded areas available
- Acclimating workers
- Emergency planning and response
- Training workers and supervisors on the signs of heat stress and preventative measures
- Modified work schedules and/or rotating out workers
- Monitoring of workers for signs of heat stress

Daily Coordination Meeting



14:00 Sign In