

# Daily Coordination Meeting



14:00 Sign In



# Daily Coordination Meeting

General Topics:

- ❖ Jobsite opened Thursday night shift, closed Friday.





SUT 1 topping  
slab @ 2:00 am

A red arrow points from this text box to a specific area on the construction site.

HWB  
curbs/pads  
@ 3:00 am

A red arrow points from this text box to a specific area on the construction site.

SUT 1 topping slab @ 2:00 am

HWB plinths/curbs and  
equipment pad @ 3:00 am

FAB-28

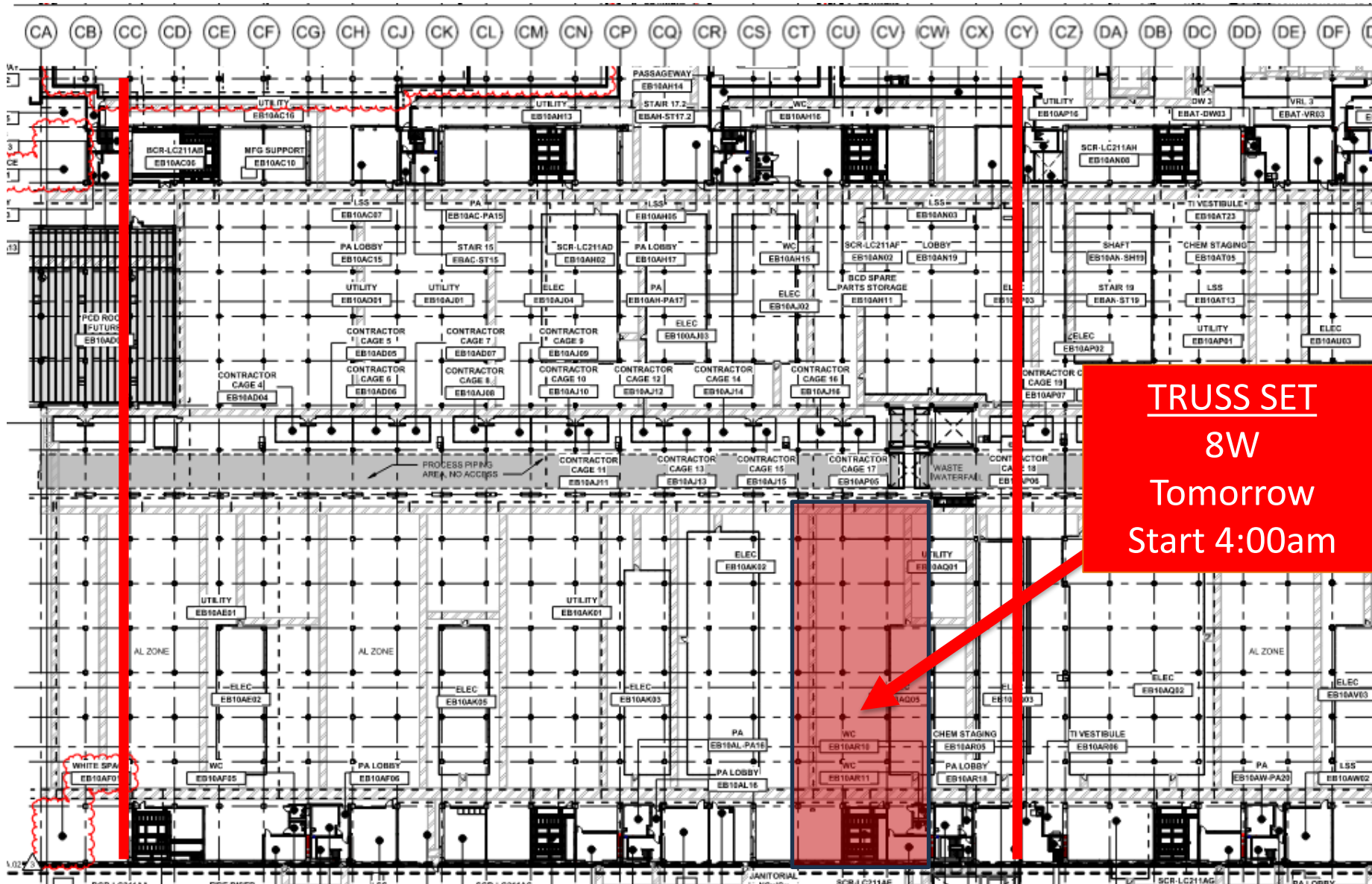




HOFFMAN CONSTRUCTION COMPANY



## UTILITY LEVEL TRUSS

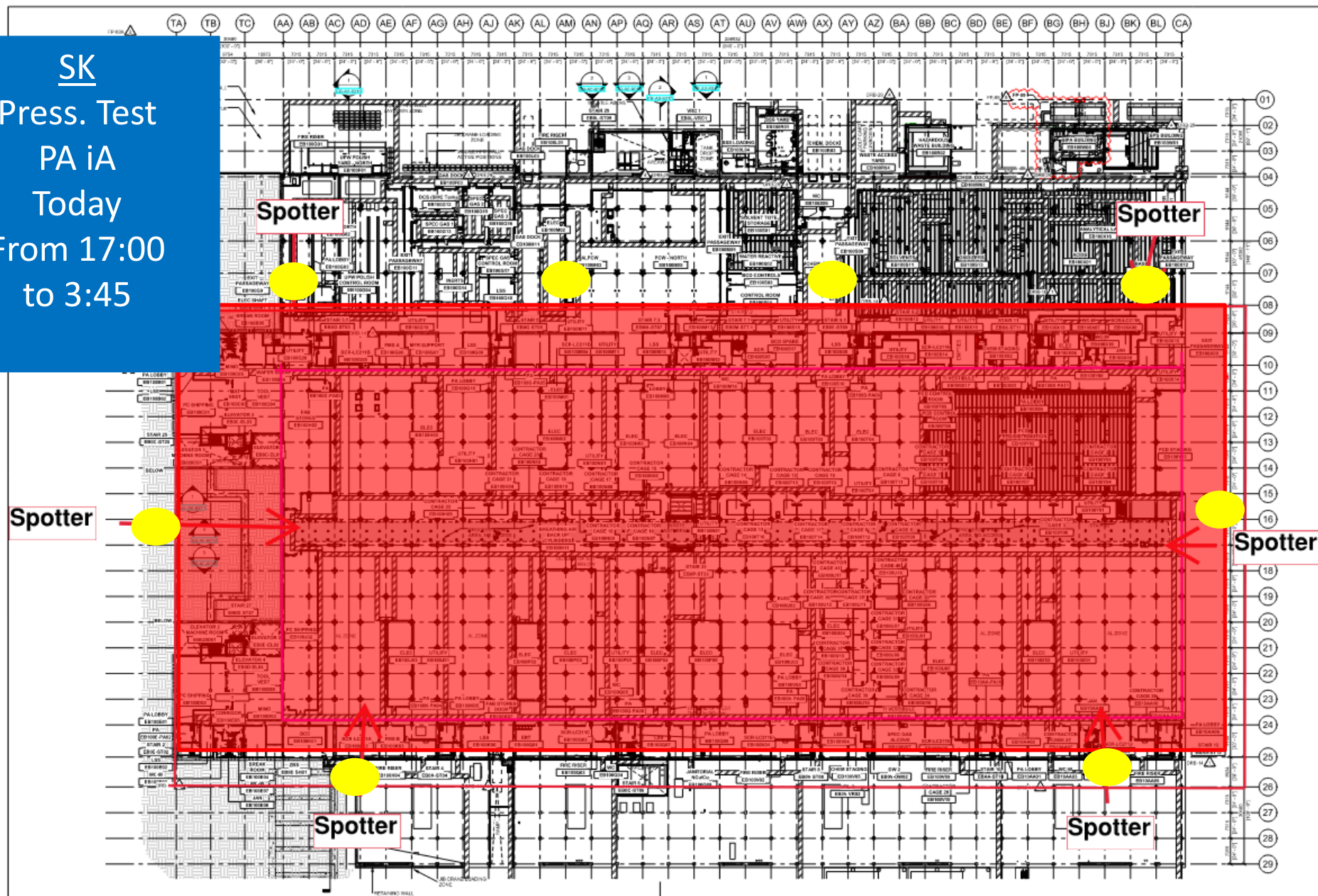


**TRUSS SET  
8W  
Tomorrow  
Start 4:00am**



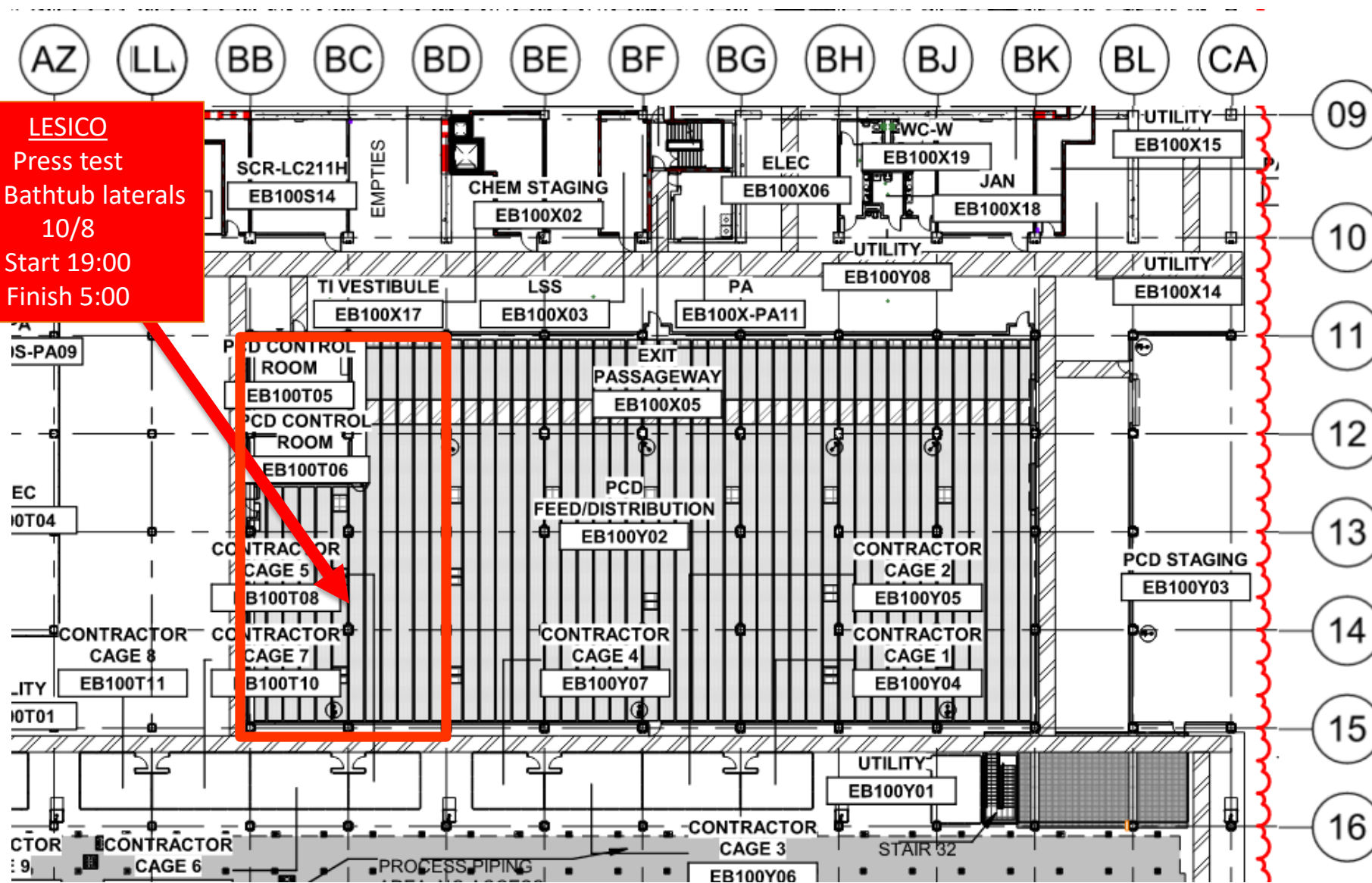


SK  
Press. Test  
PA iA  
Today  
From 17:00  
to 3:45





LESICO  
Press test  
PCD Bathtub laterals  
10/8  
Start 19:00  
Finish 5:00







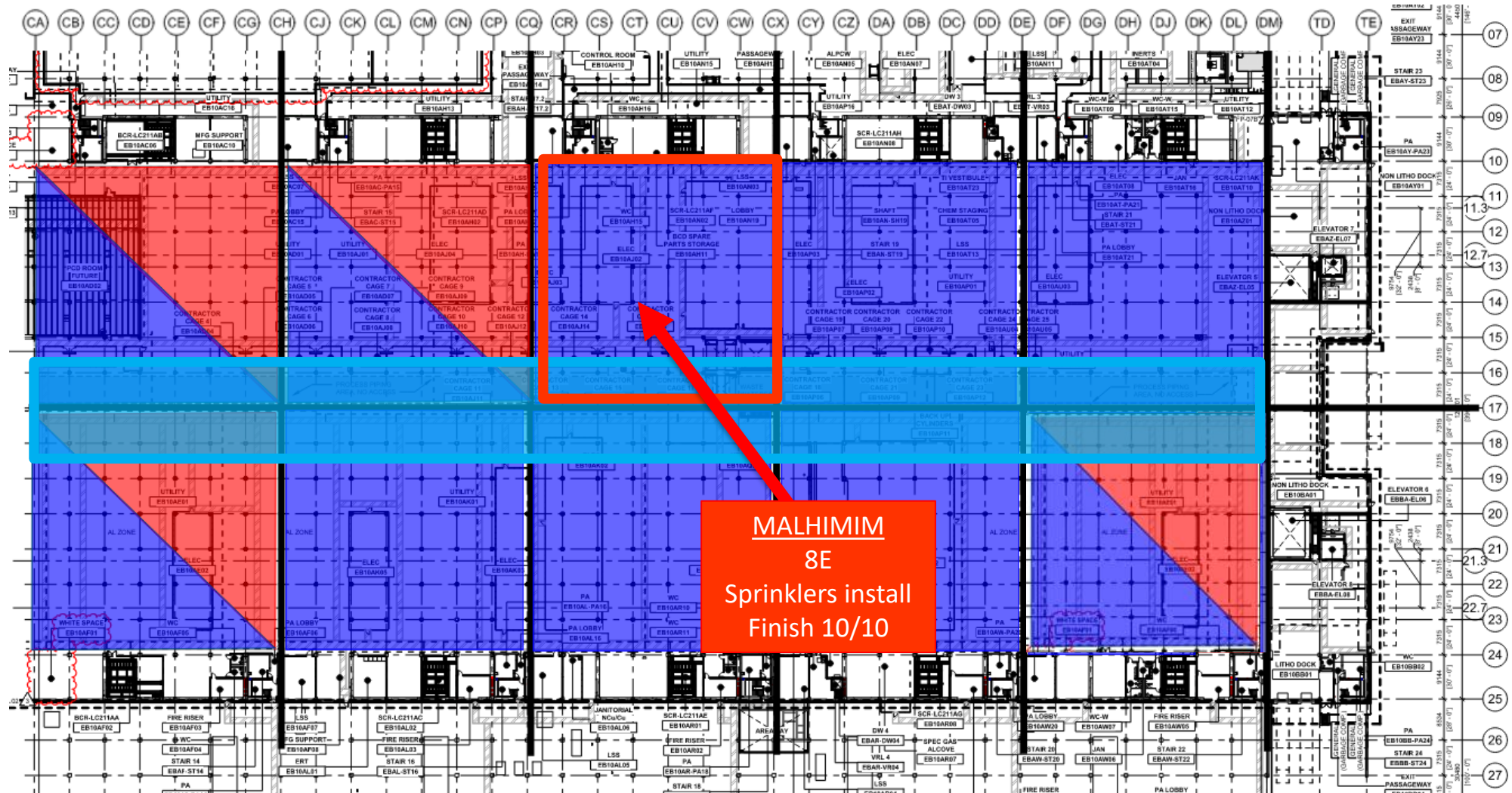
## BELFOR Mold remediation

## ELRAM

MEP+Elctrical  
Ready for re-install



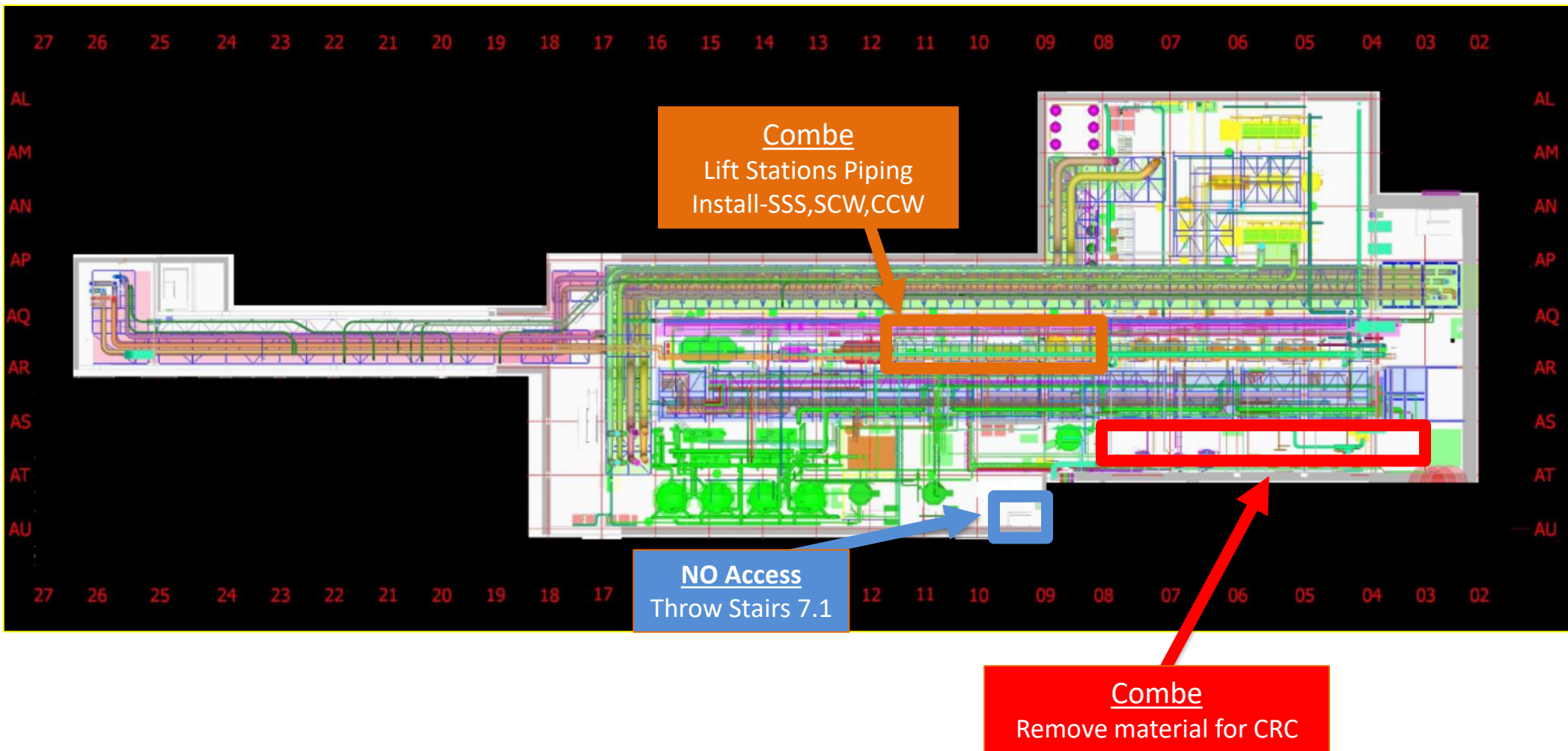
# UTILITY LEVEL MOD2







SUT 38.1 LEVEL





## SUT 38.1 LEVEL

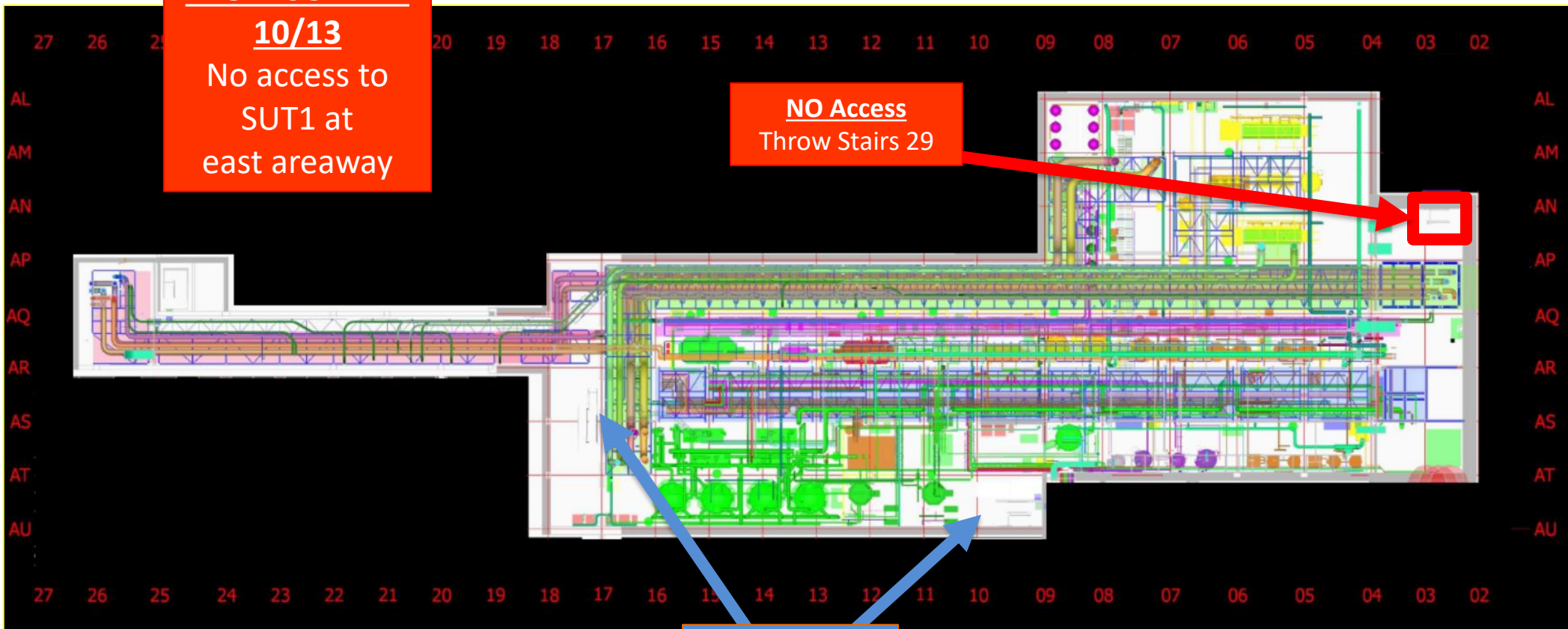
**FROM SUNDAY**

**10/13**

No access to  
SUT1 at  
east areaway

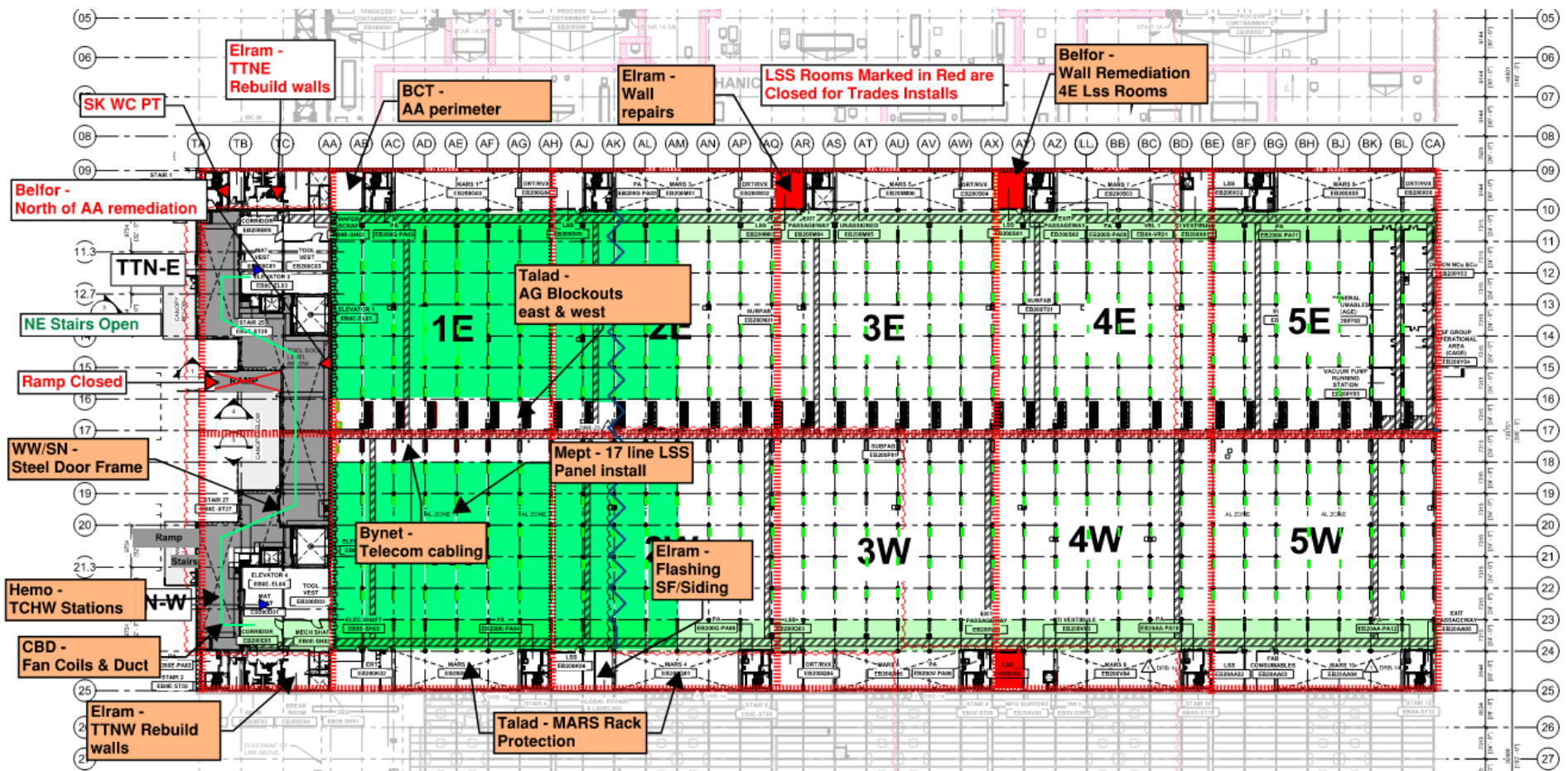
**NO Access**  
Throw Stairs 29

**Access**  
Throw Stairs 7.1  
and Stairs 33

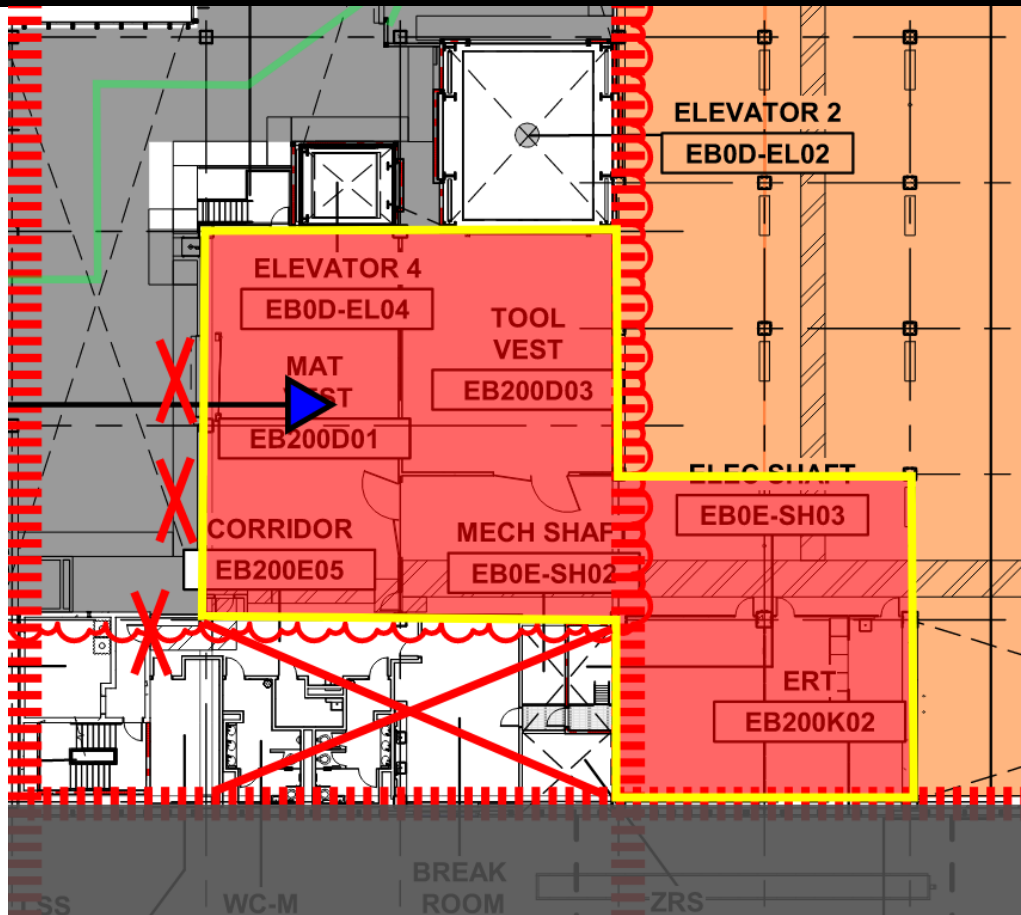




# SUBFAB BUILDOUT MOD 1



# SUBFAB NWTT DELIVERIES BLOCKED

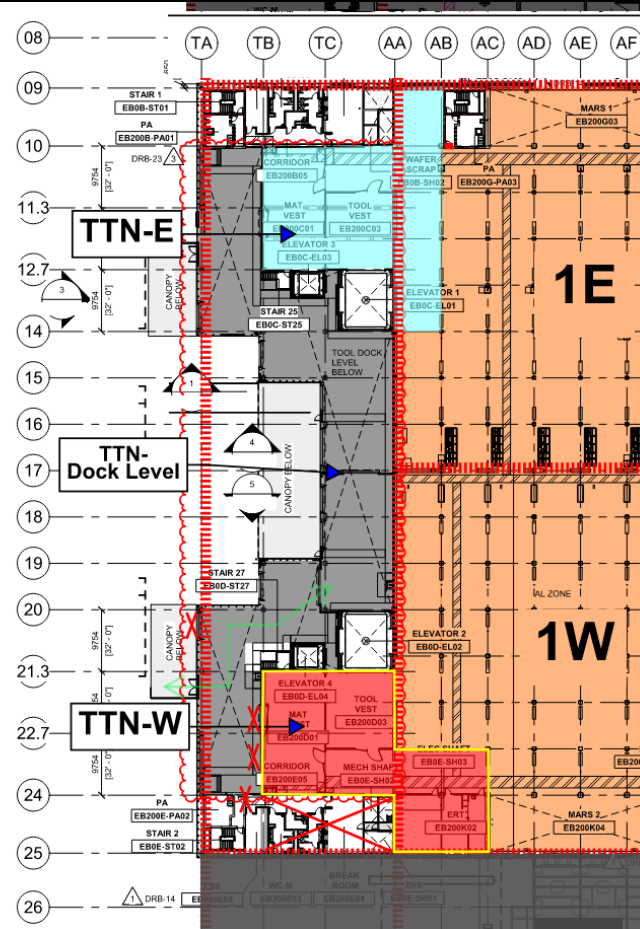


**Northwest delivery dock is permanently closed.**

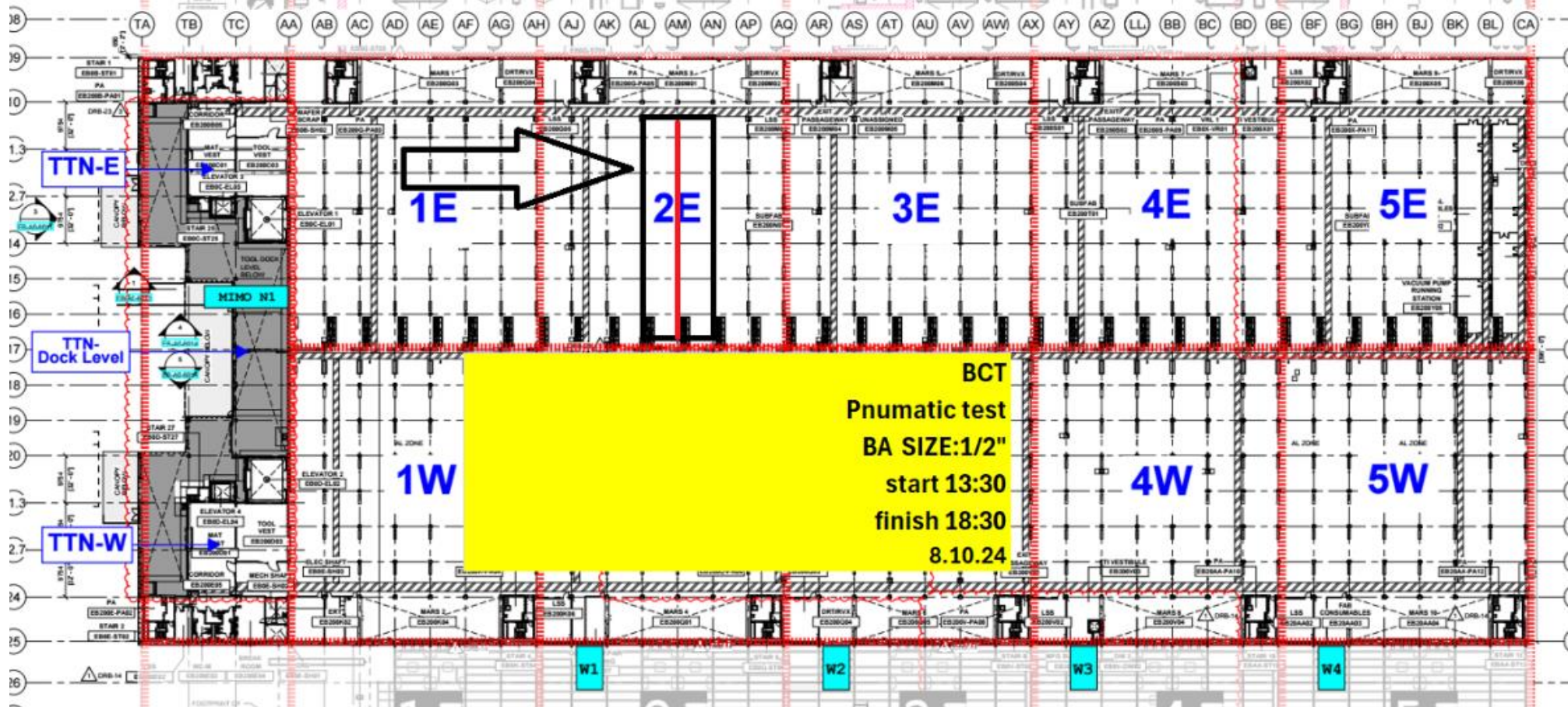
Deliveries from MIMO7, MIMO9 & Alimak only.



# SUBFAB CRC TOPCOAT

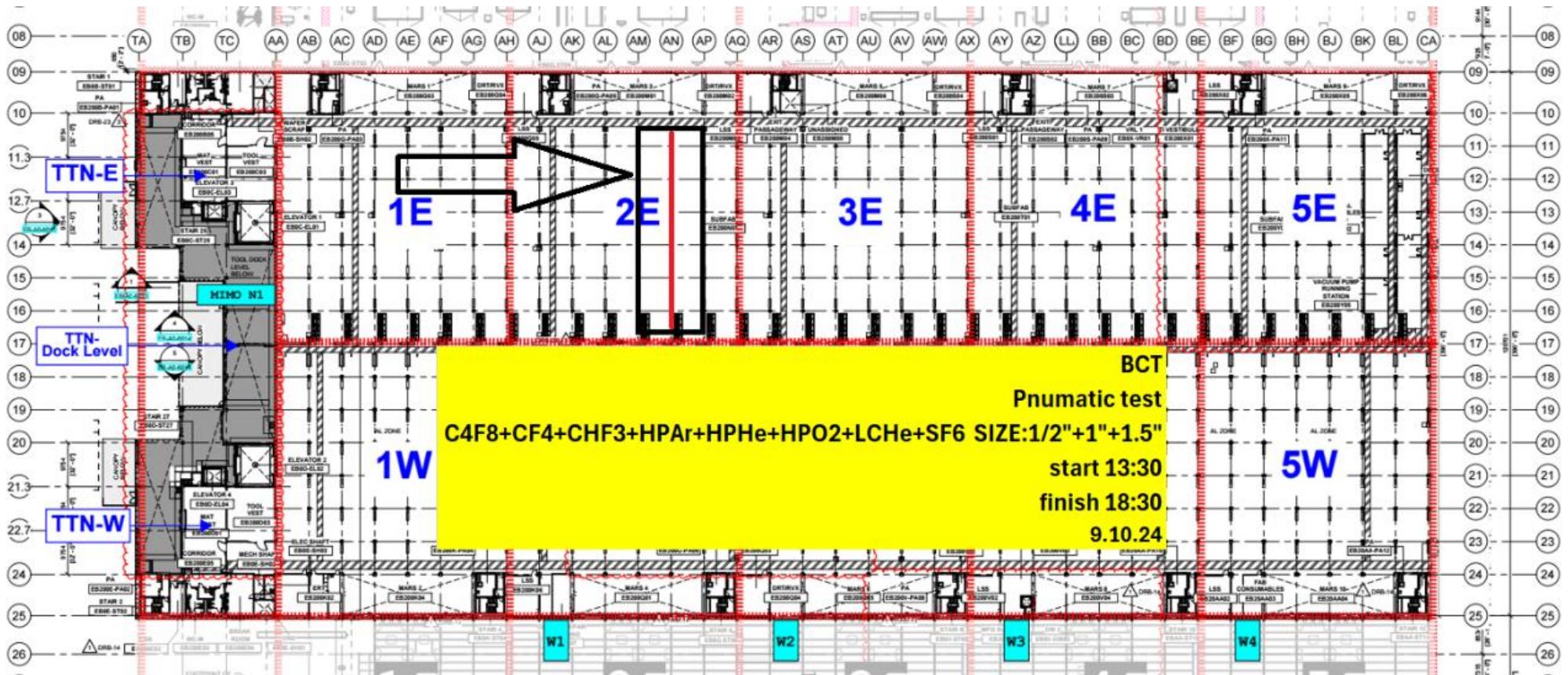


# BCT Pressure Test Exclusion Zone



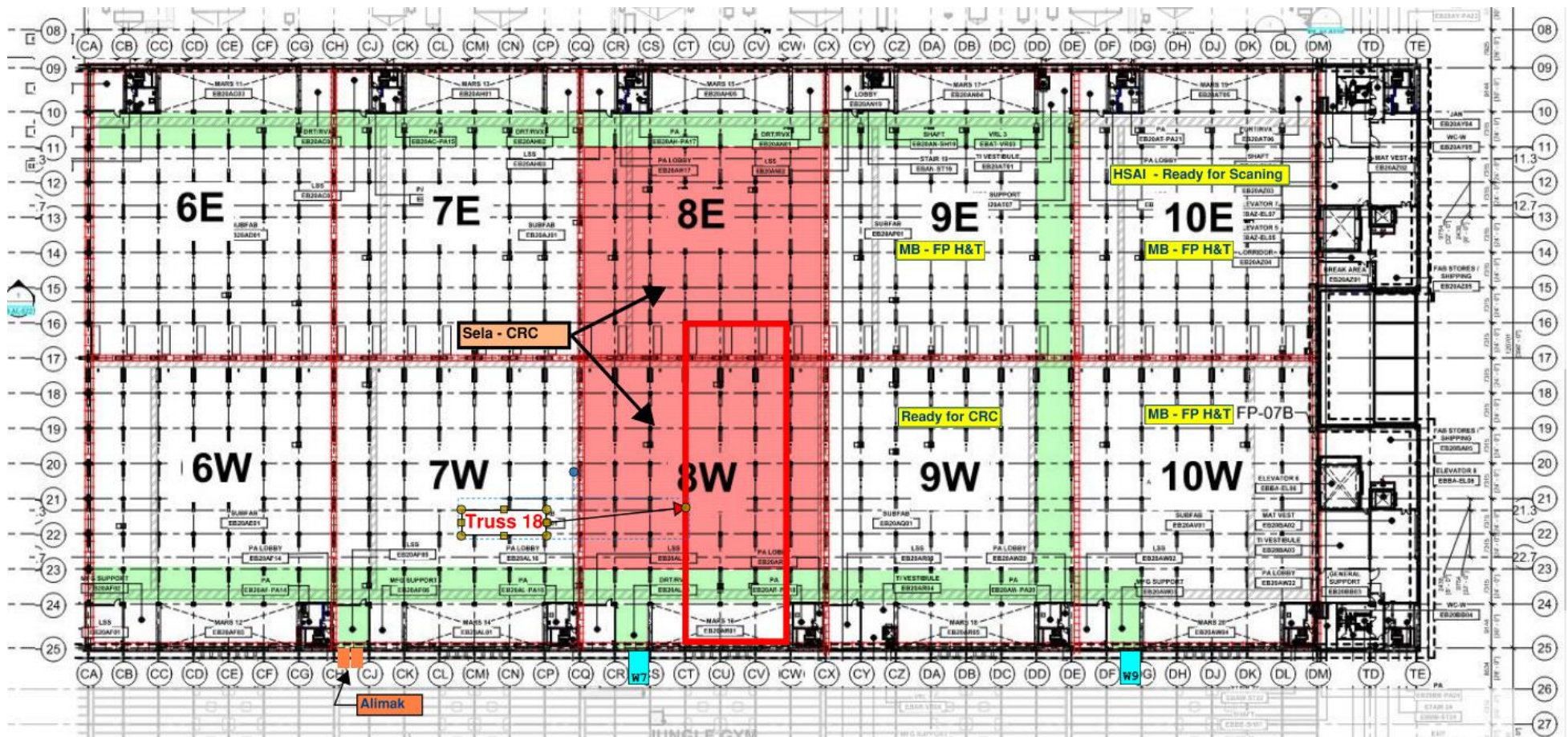


# BCT Pressure Test Exclusion Zone





# SUBFAB BUILDOUT MOD 2





Clean room

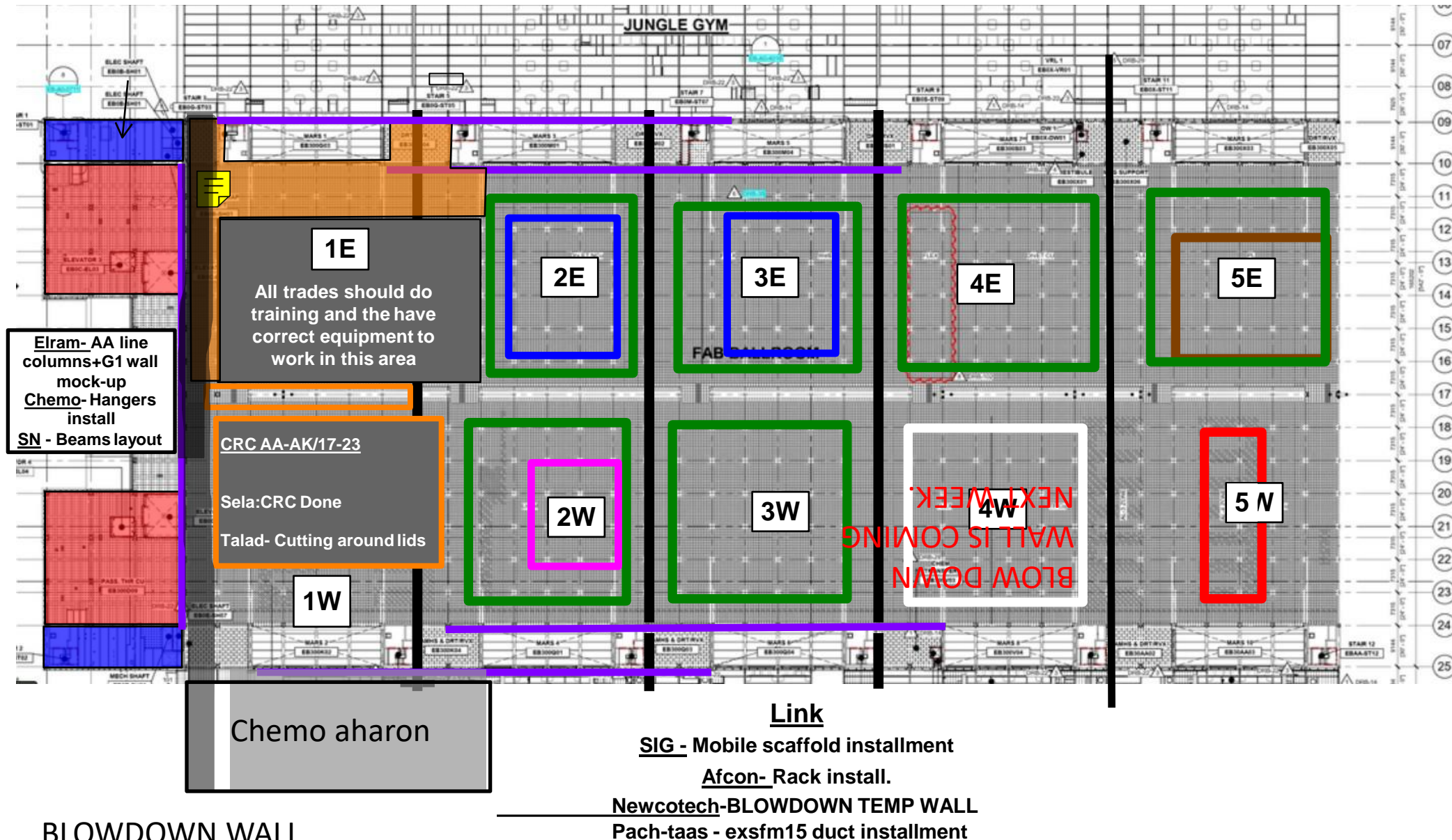
protocols apply!!

1. only electrical booms & scissors.

2. Booties for all wheels is a must.

sella crc 1E zone.

All subs working over head must protect 4da working areas with protective sheets to prevent plaster waste or any other waste from falling down on fresh crc coat



BLOWDOWN WALL  
IS COMING NEXT WEEK.



ELRAM-  
9,10,25 L  
COLUMN  
WRAPPING

**Int. level**

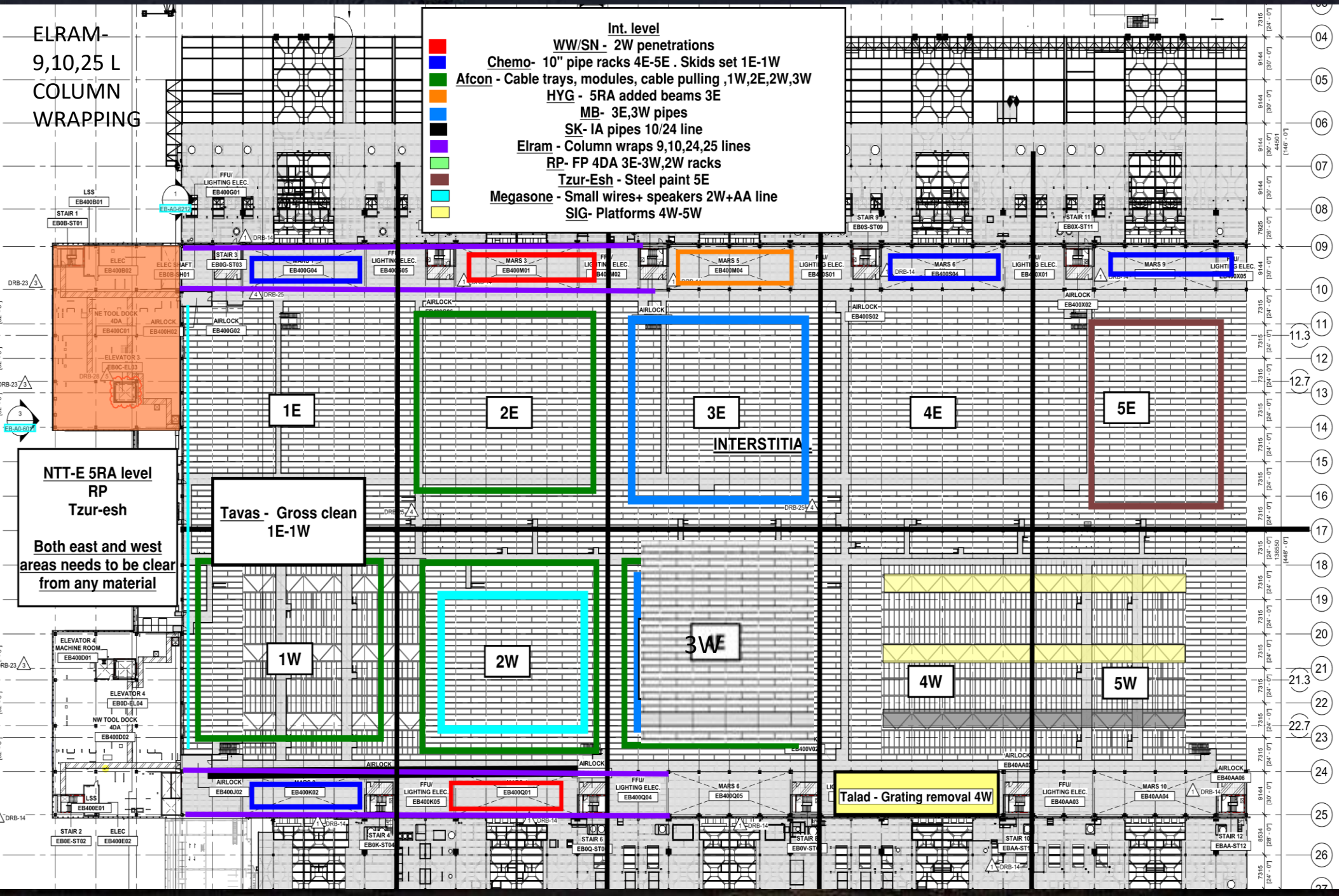
- WW/SN - 2W penetrations
- Chemo- 10" pipe racks 4E-5E . Skids set 1E-1W
- Afcon - Cable trays, modules, cable pulling ,1W,2E,2W,3W
- HYG - 5RA added beams 3E
- MB- 3E,3W pipes
- SK- 1A pipes 10/24 line
- Elram - Column wraps 9,10,24,25 lines
- RP- FP 4DA 3E-3W,2W racks
- Tzur-Esh - Steel paint 5E
- Megasone - Small wires+ speakers 2W+AA line
- SIG- Platforms 4W-5W

NTT-E 5RA level  
RP  
Tzur-esh

Tavas - Gross clean  
1E-1W

Both east and west  
areas needs to be clear  
from any material

Talad - Grating removal 4W







Truss Yard:  
RP and Tzur-Esh to start FP and paint trusses on night shift

Infill ongoing

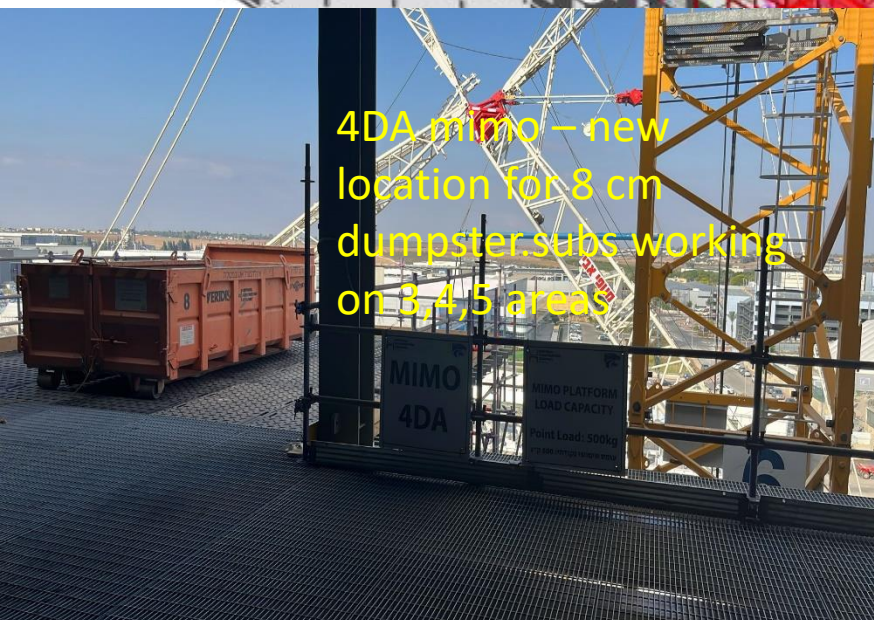
Tzur-esh  
MOD2 paint

MIMO 4DA level CB-CC  
SIG done

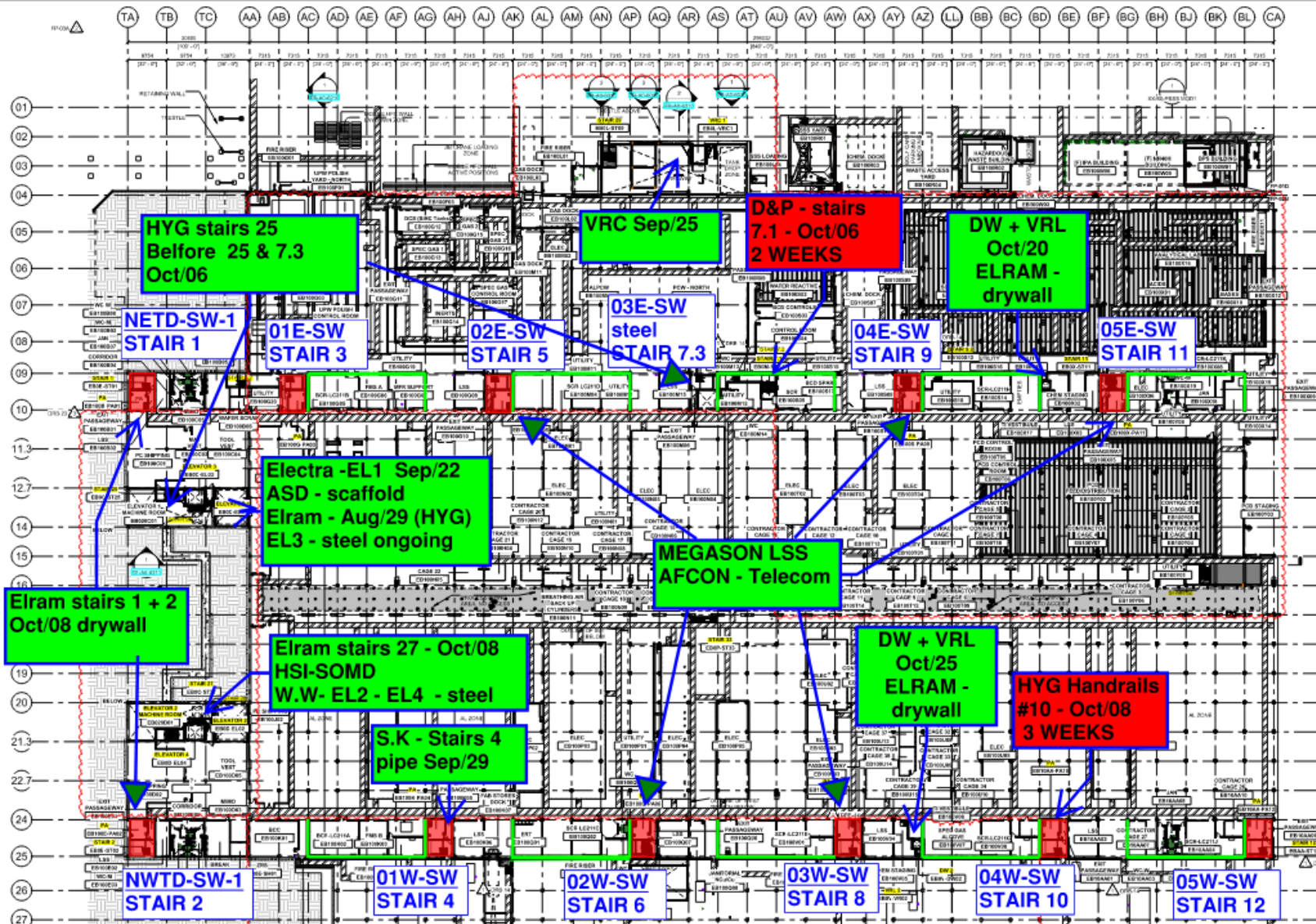
Truss # 18 will be installed  
Tomorrow 4 am. 9/10.

18

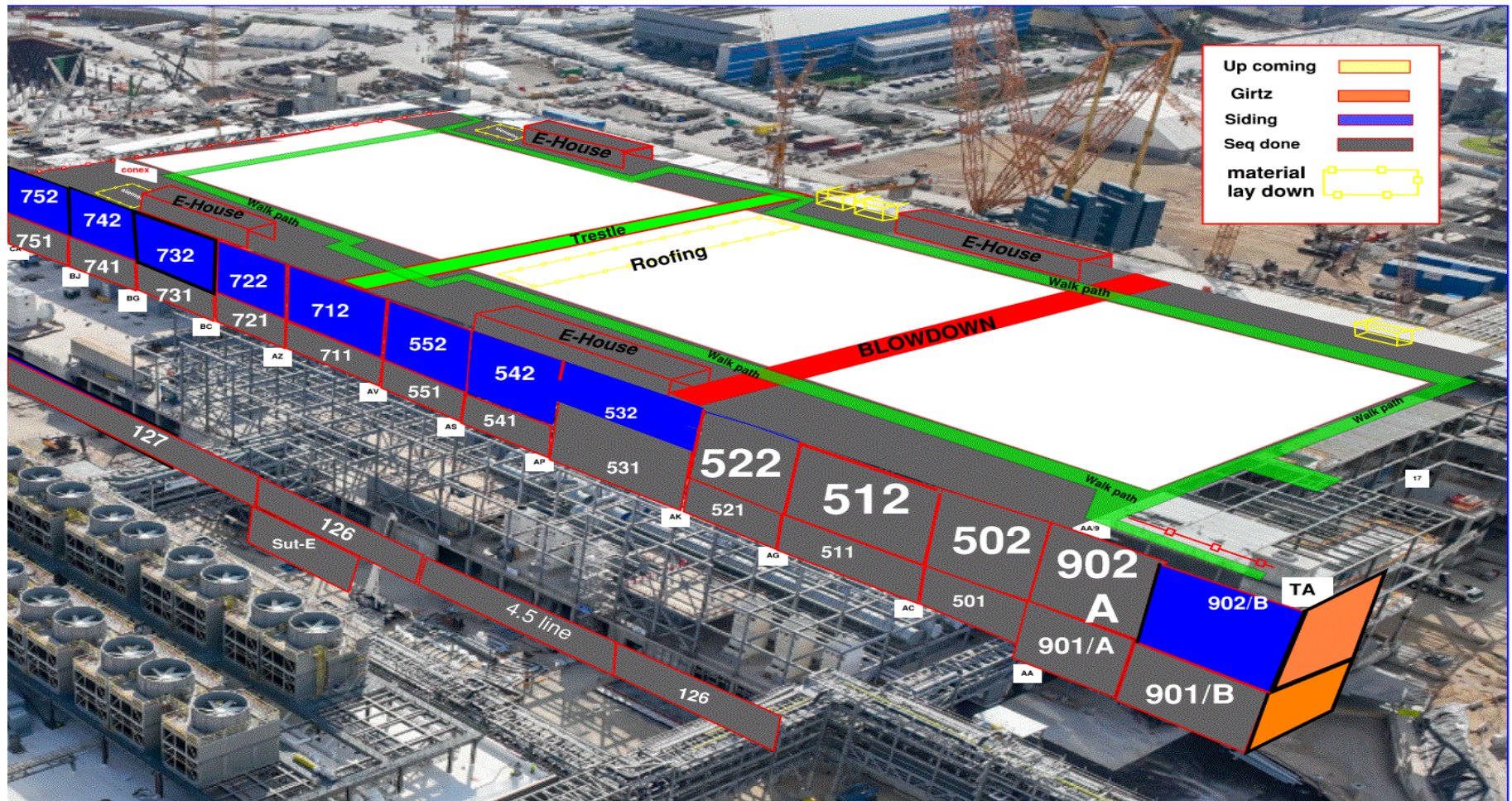
SEQ 282 ongoing



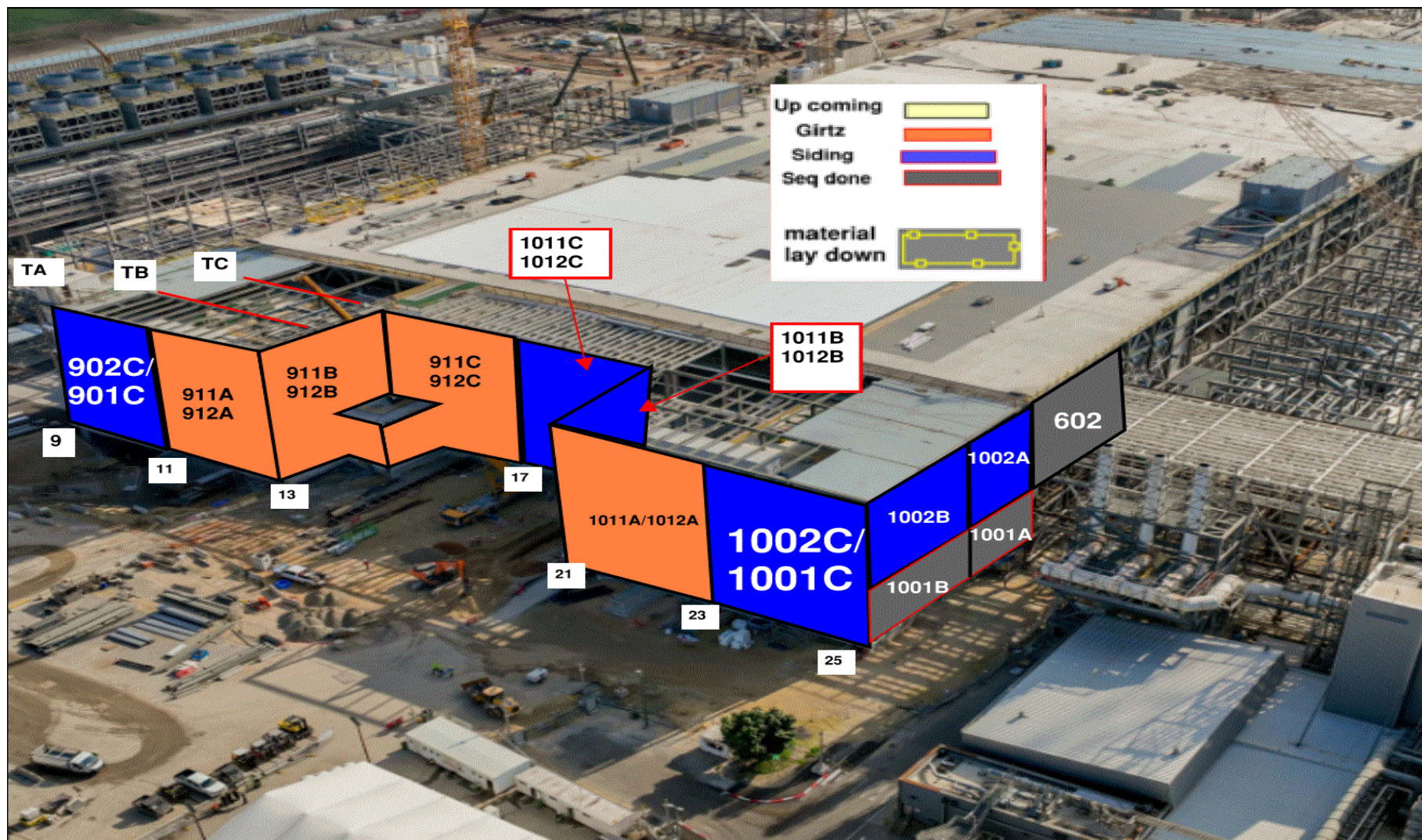




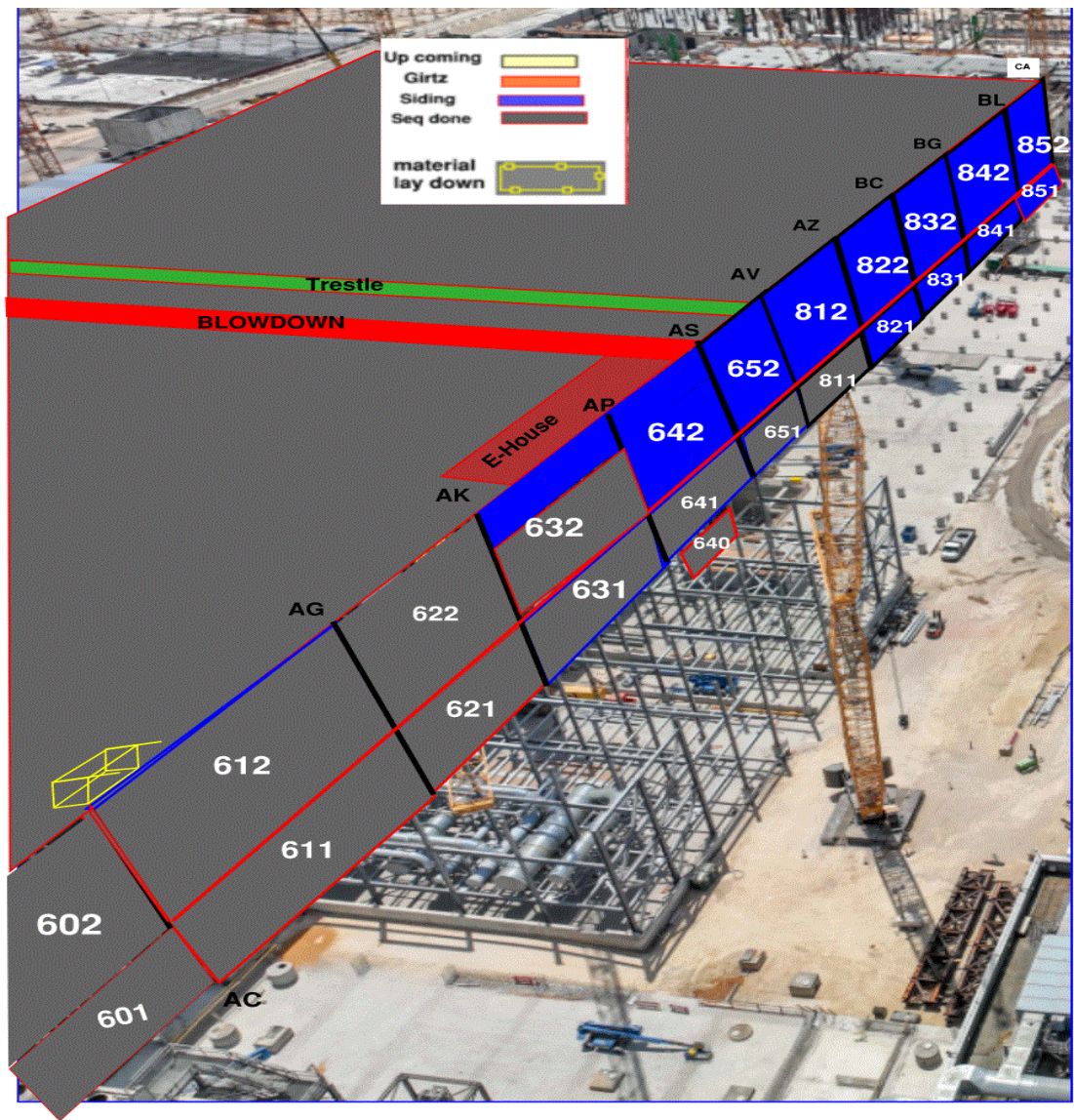












Siding - East FAB - PSSS

[illegible]

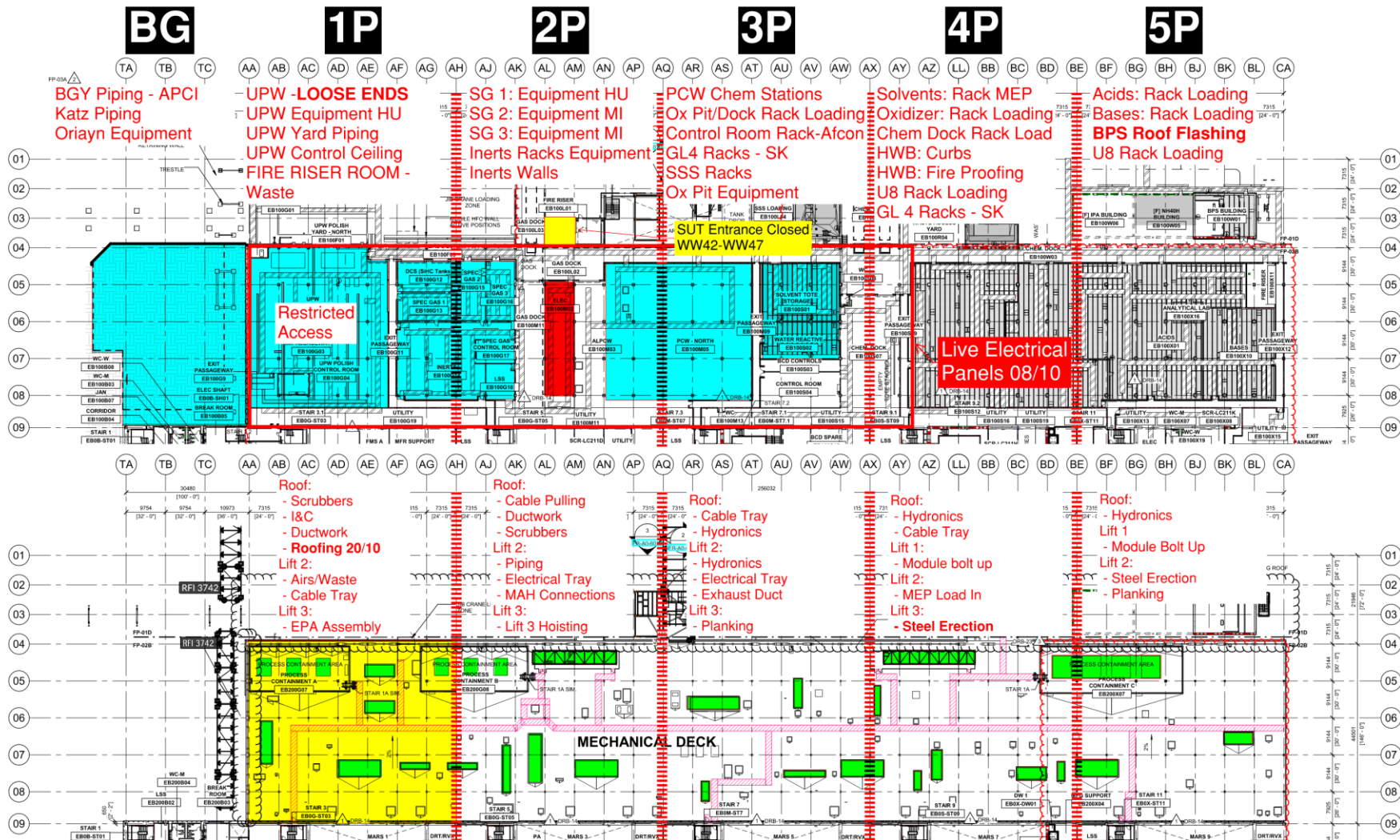


Siding - West FAB - JYG

## Link

1  
2  
3  
4  
5

# PSSS.1





# PSSS.2

6P

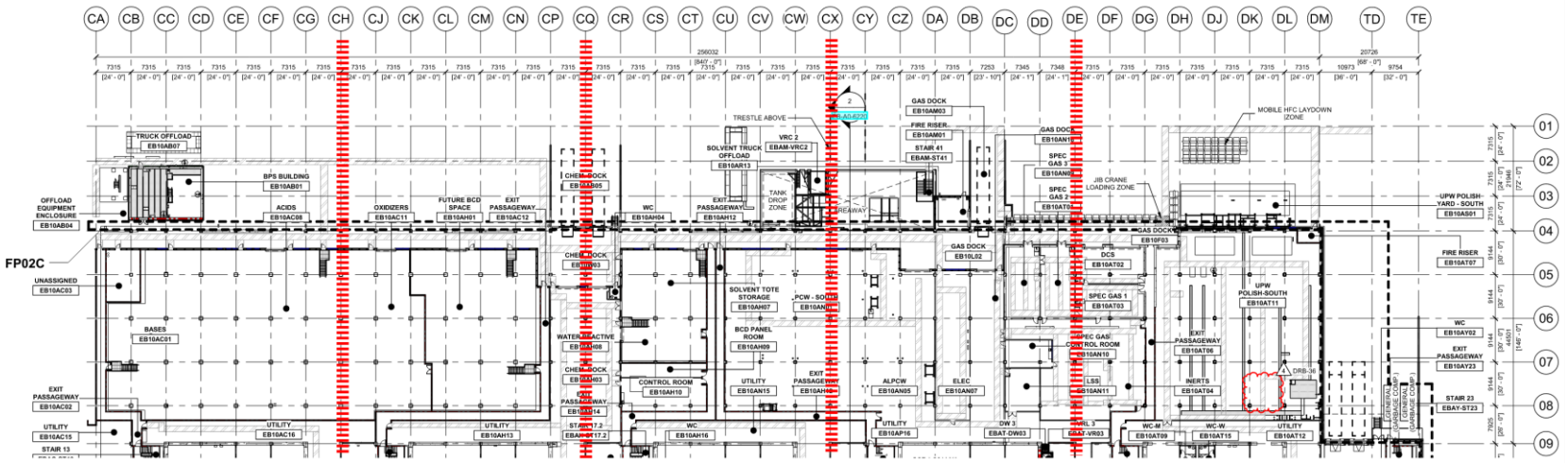
7P

8P

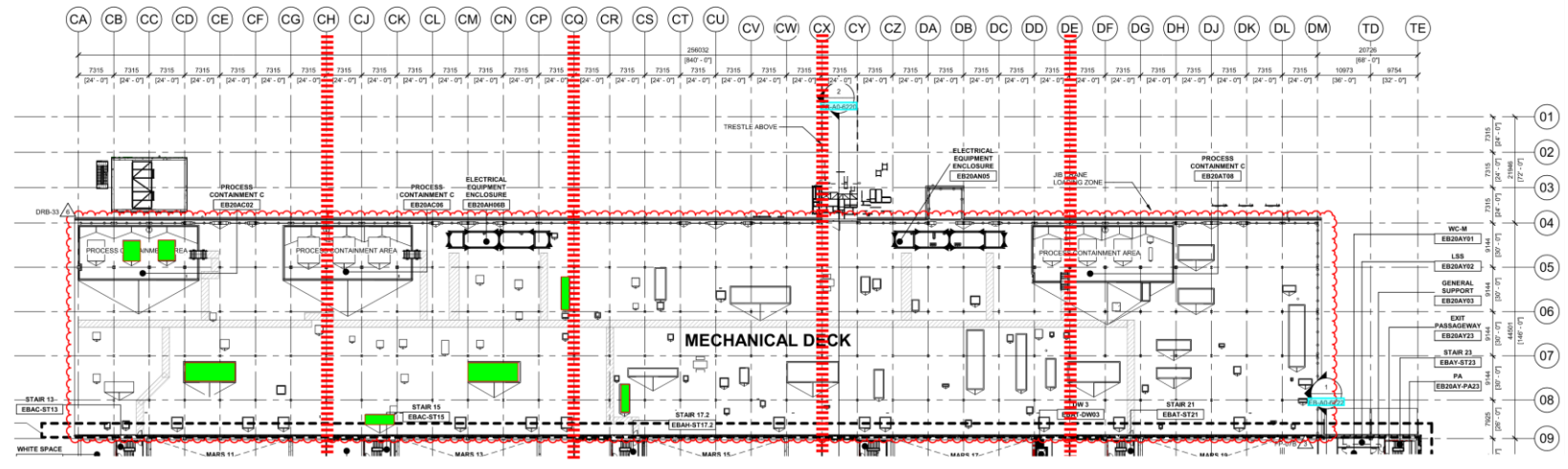
9P

10P

Utility Level  
1YA



PSSS Roof  
2SA



# 3P Plenum Delivery and Storage 07/10







# WJG 01J, 02J LIFT 2 & 3







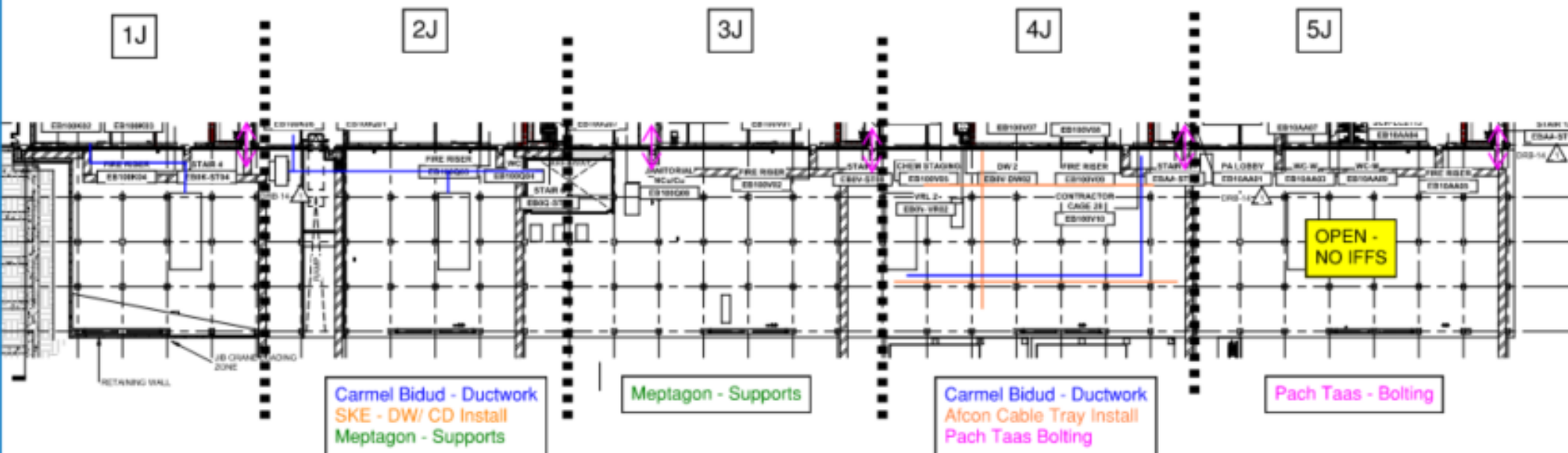
# WJG 03J, 04J, 05J LIFT 2 & 3



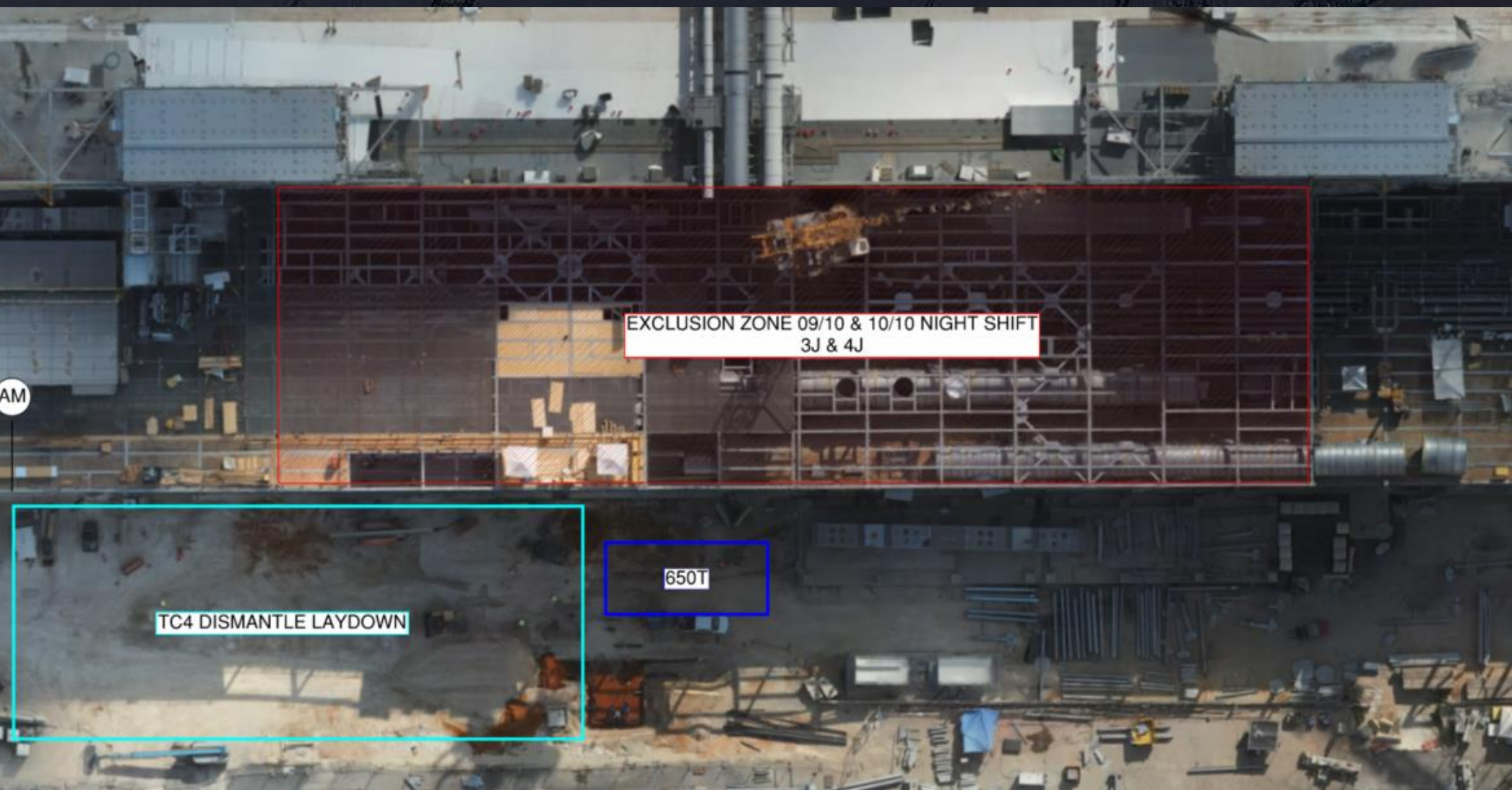




# WJG UTILITY LEVEL BUILD OUT

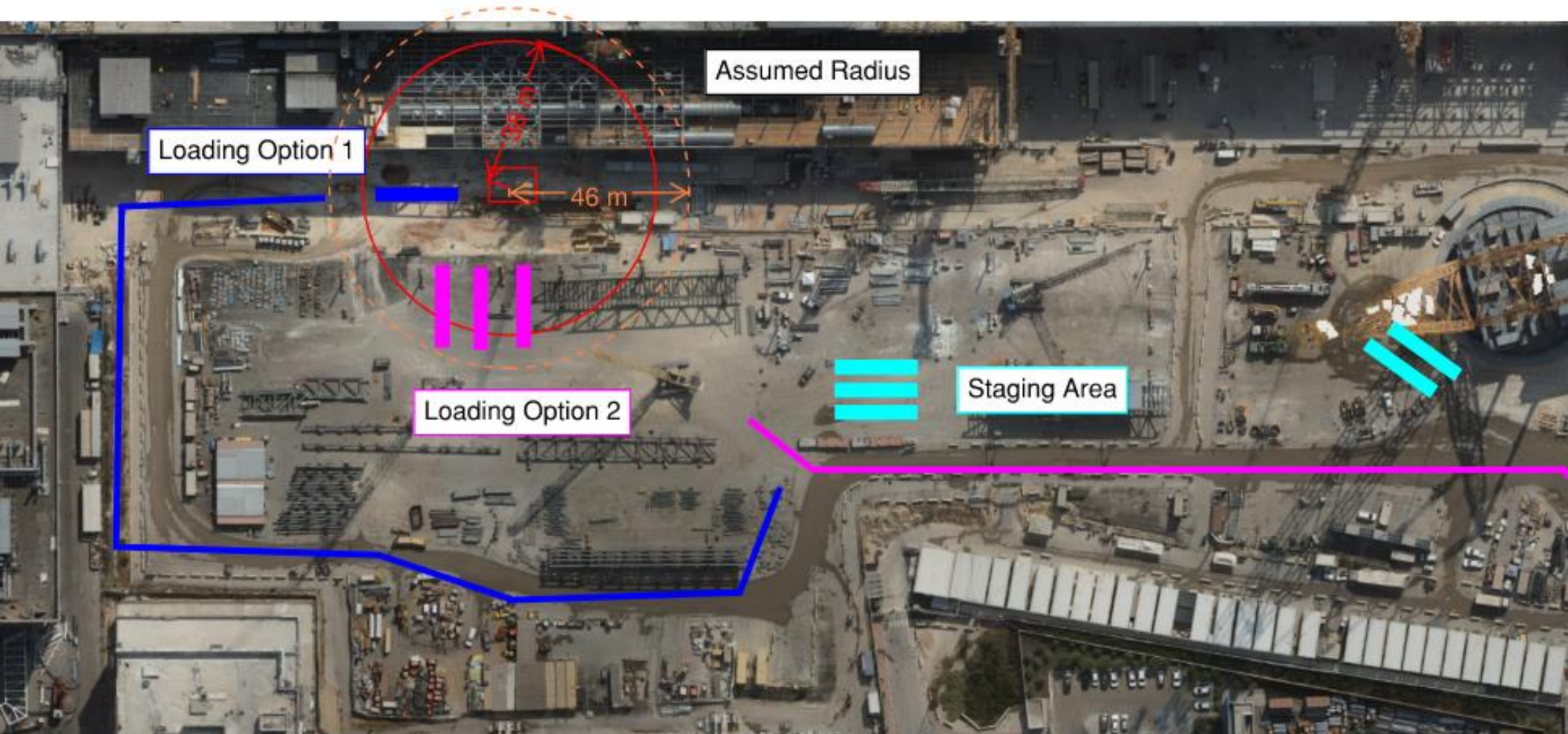


# TC4 Dismantle Exclusion Zones





# TC4 Dismantle Logistics



## Truck Staging:

Dependent on Box Build and W&W Permission - Park Empty Trucks in Truss Yard. Other Options: In Sarens Area, or Outside Gate A (limit 2)

## Truck Routing:

Option 1: Trailer north of crane, limit 1 truck only

Option 2: (Pending Box Build and W&W Permission) Stage 1-3 Trucks within 46m Radius

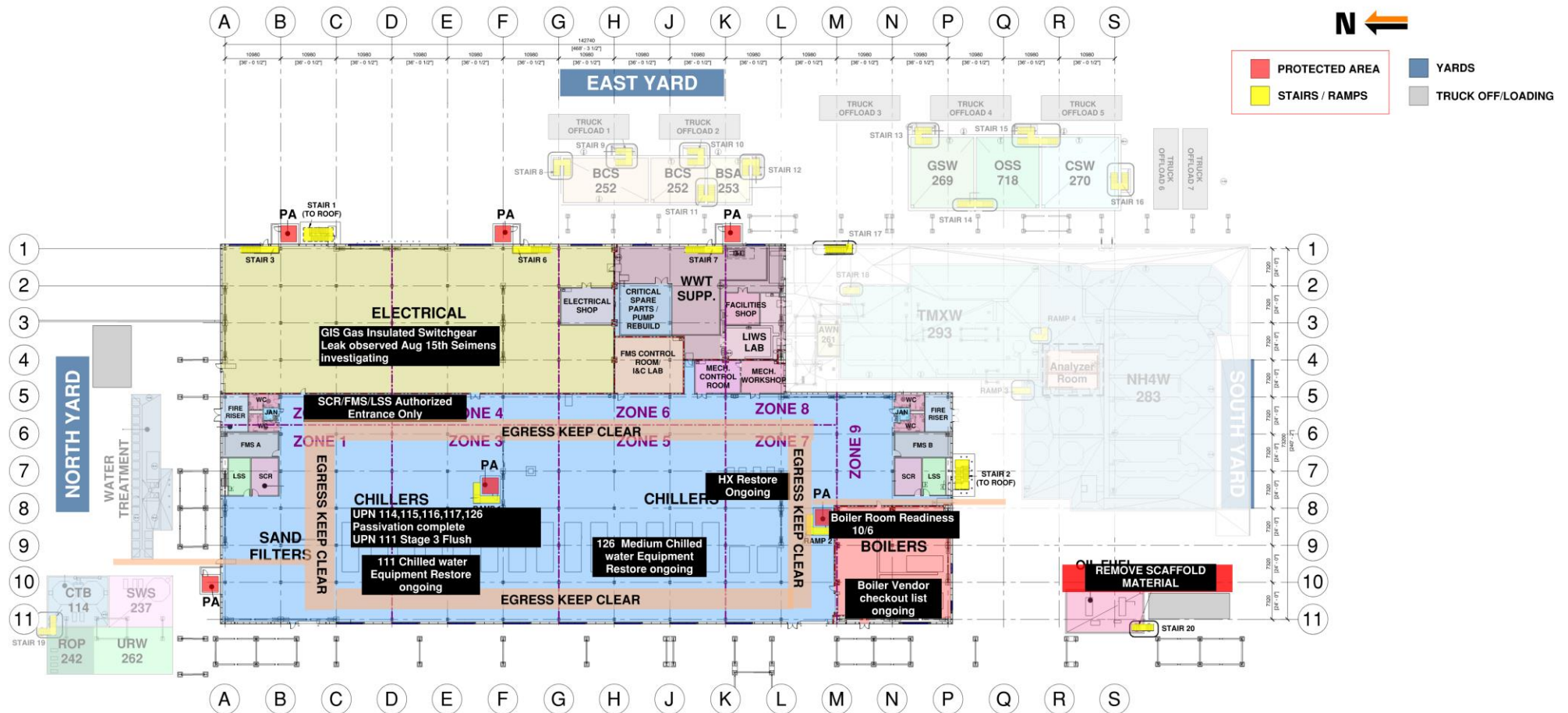




# CUB 1

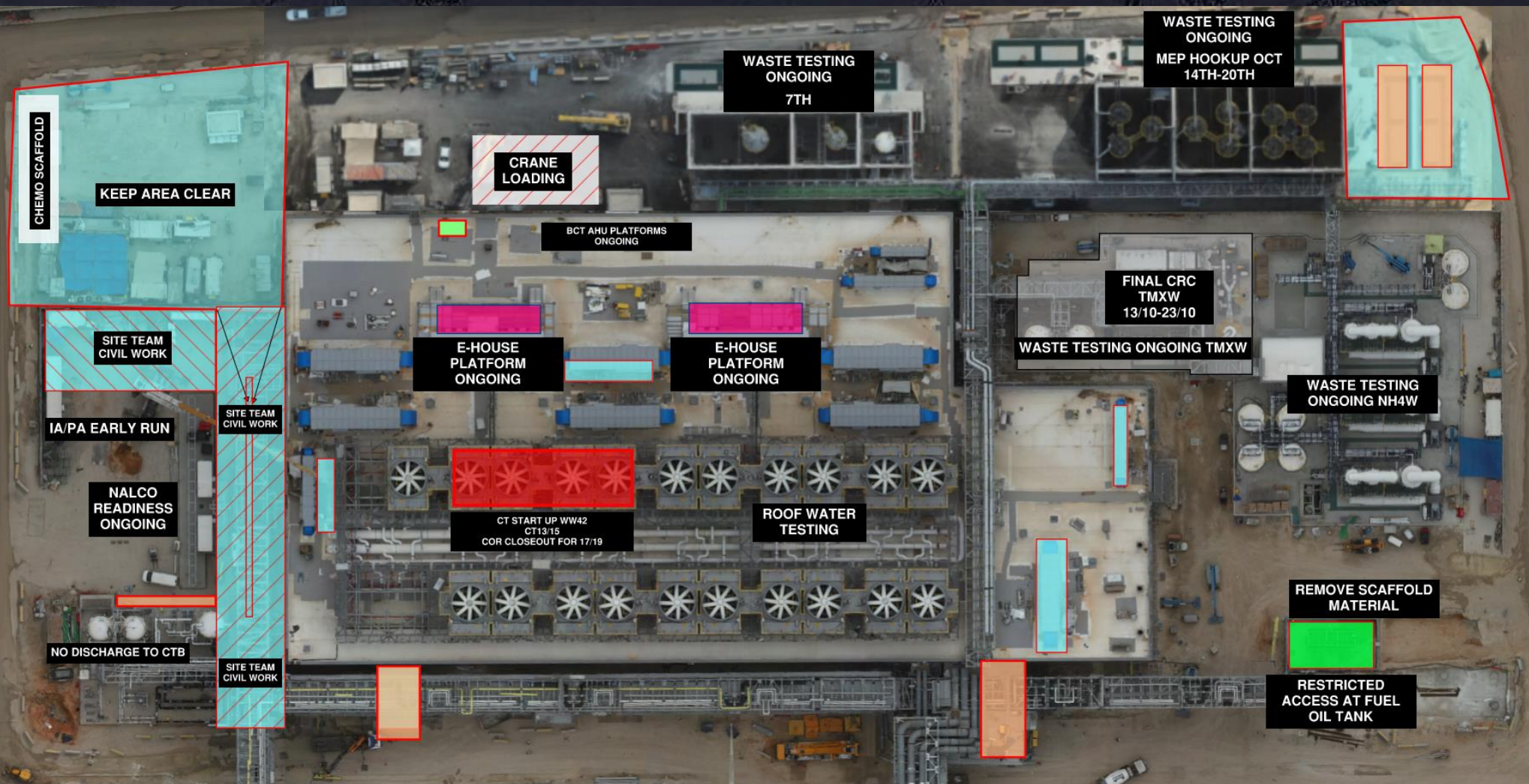
## CUB 1 COORDINATION MAP

UPDATED \_\_ / \_\_ / \_\_





# CUB 1 – EXTERIOR/ROOF



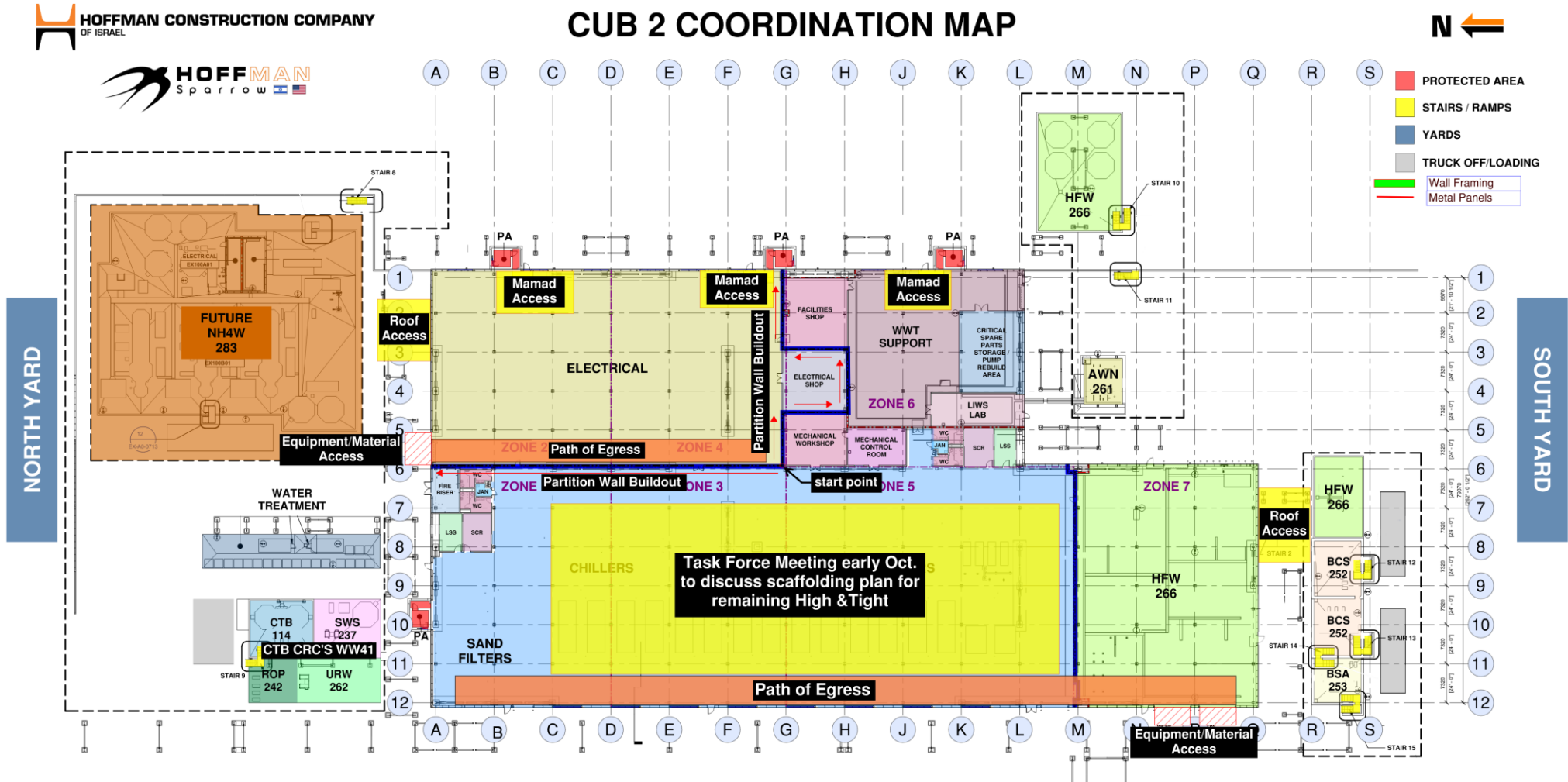


# CUB 2

## CUB 2 COORDINATION MAP

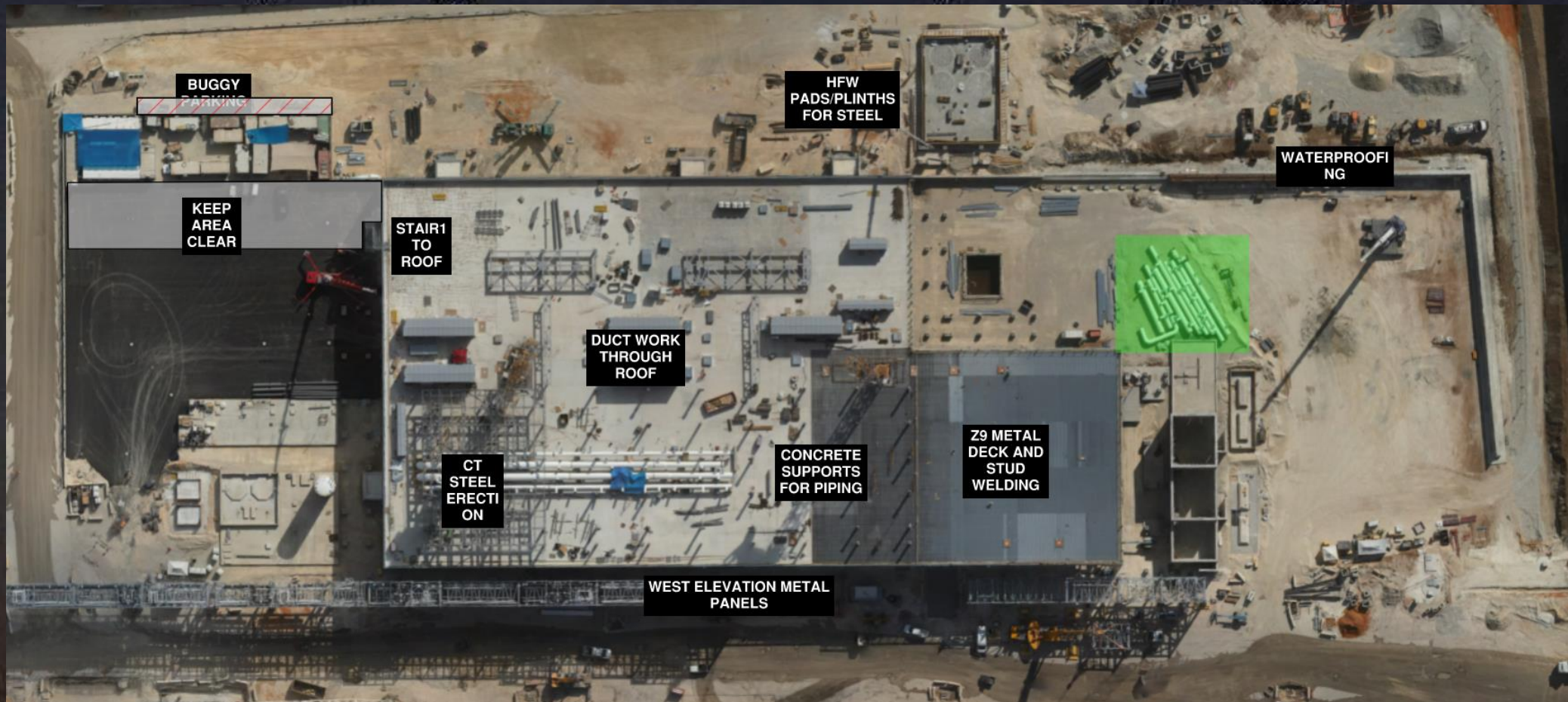


- PROTECTED AREA
- STAIRS / RAMPS
- YARDS
- TRUCK OFF/LOADING
- Wall Framing
- Metal Panels





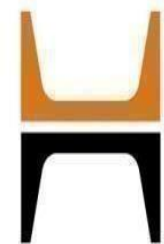
# CUB 2 – EXTERIOR/ROOF











**HOFFMAN CONSTRUCTION COMPANY**



**HOFFMAN**  
Sparrow



## T19 -ERECTION SEQUENCE

07/OCT

06/OCT

30/sep

29/sept

25-26/sept

23-24/sept

22/sep



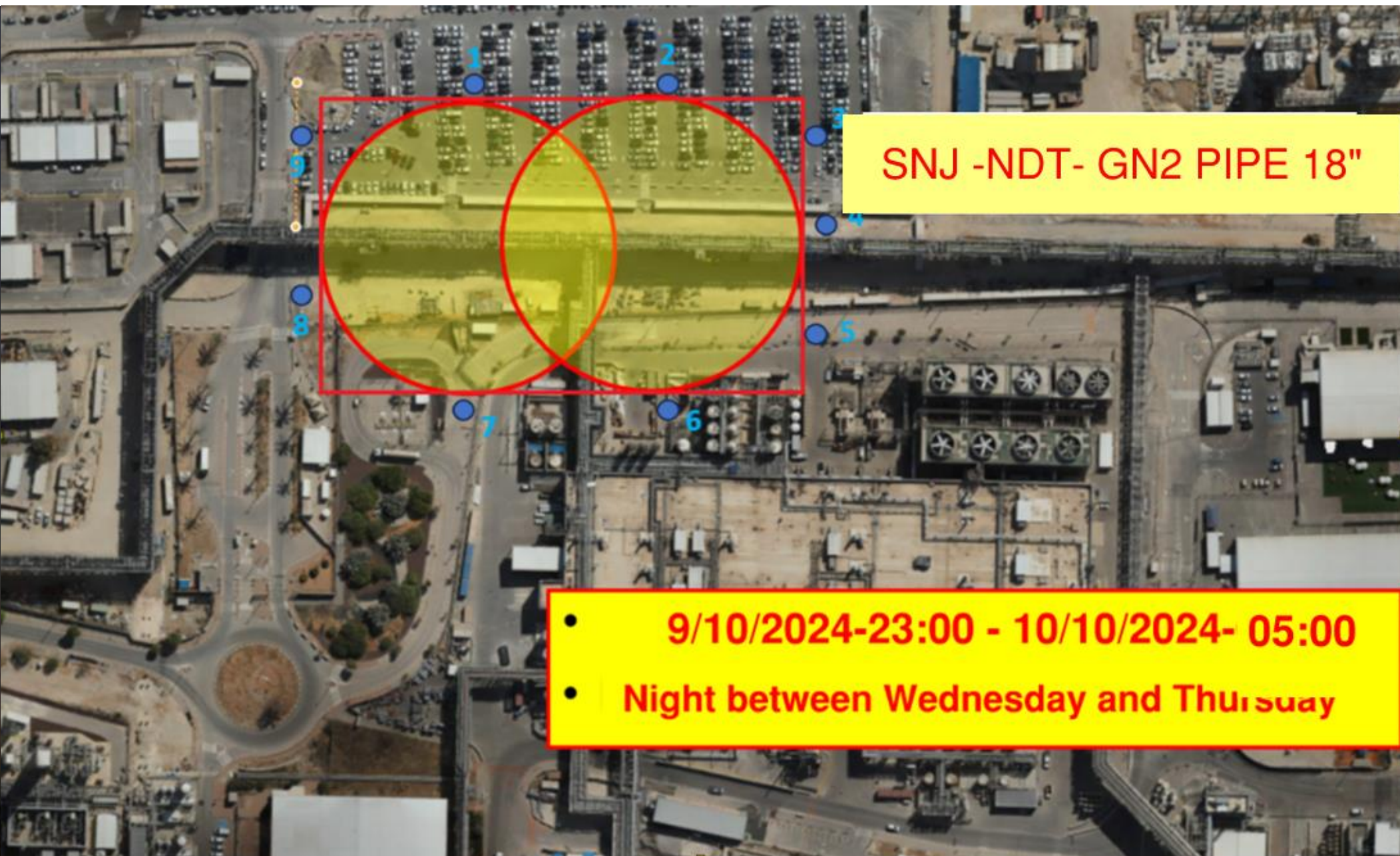




**HOFFMAN CONSTRUCTION COMPANY**



**HOFFMAN**  
Sparrow  



**SNJ -NDT- GN2 PIPE 18"**

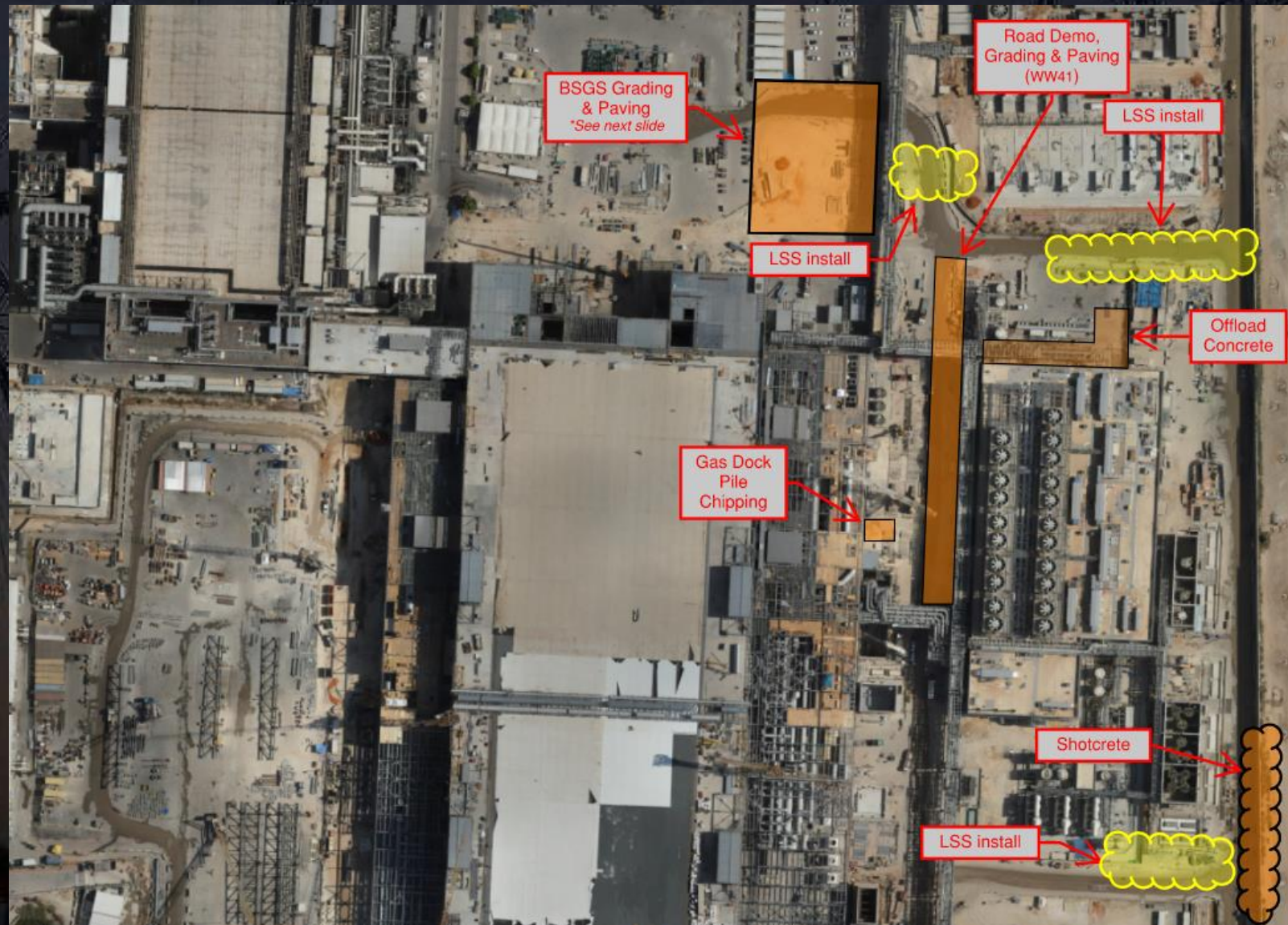
- **9/10/2024-23:00 - 10/10/2024- 05:00**
- **Night between Wednesday and Thursday**



# Daily Coordination Meeting

## Site Logistics

### North

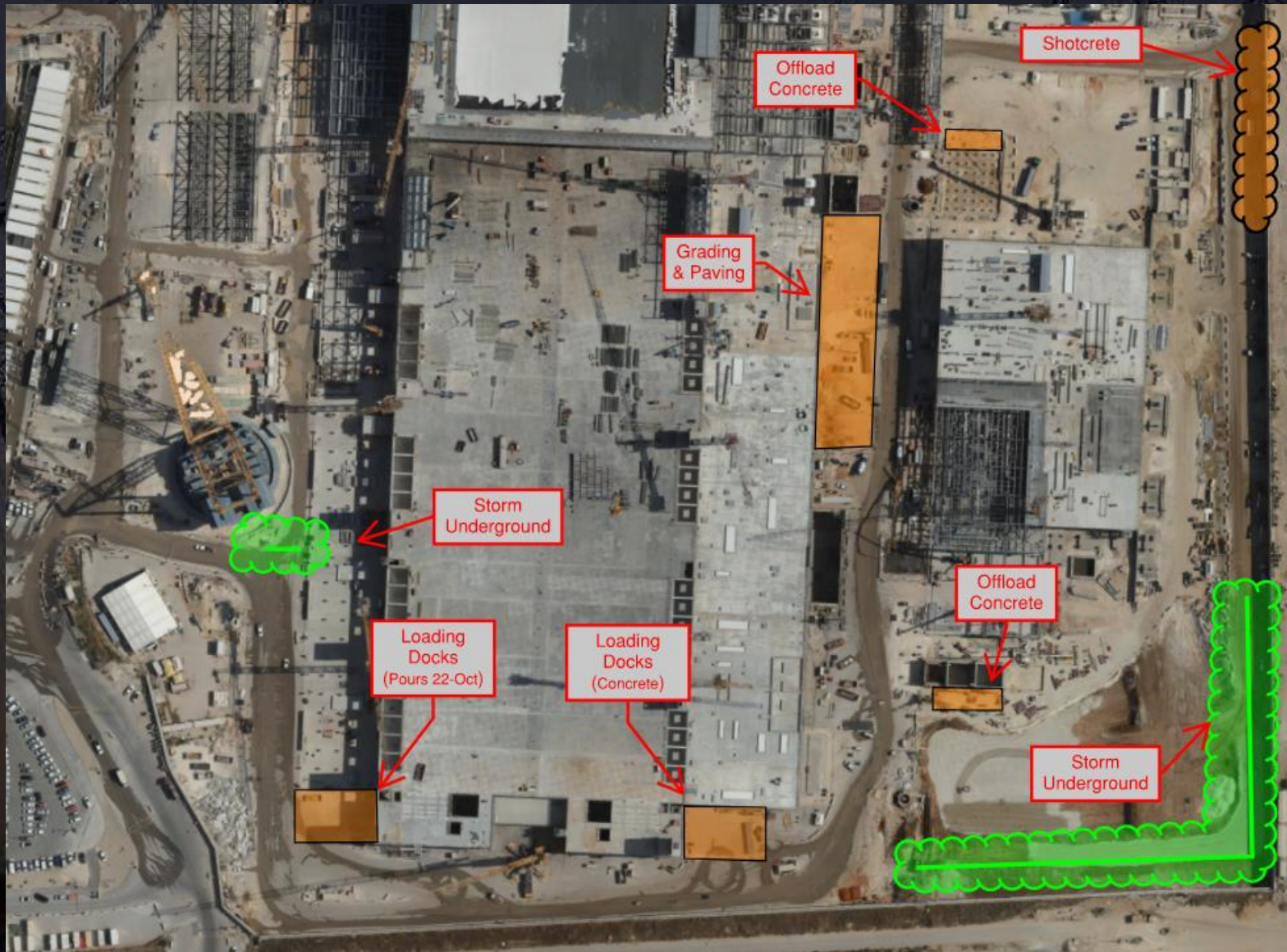




# Daily Coordination Meeting

## Site Logistics

### South

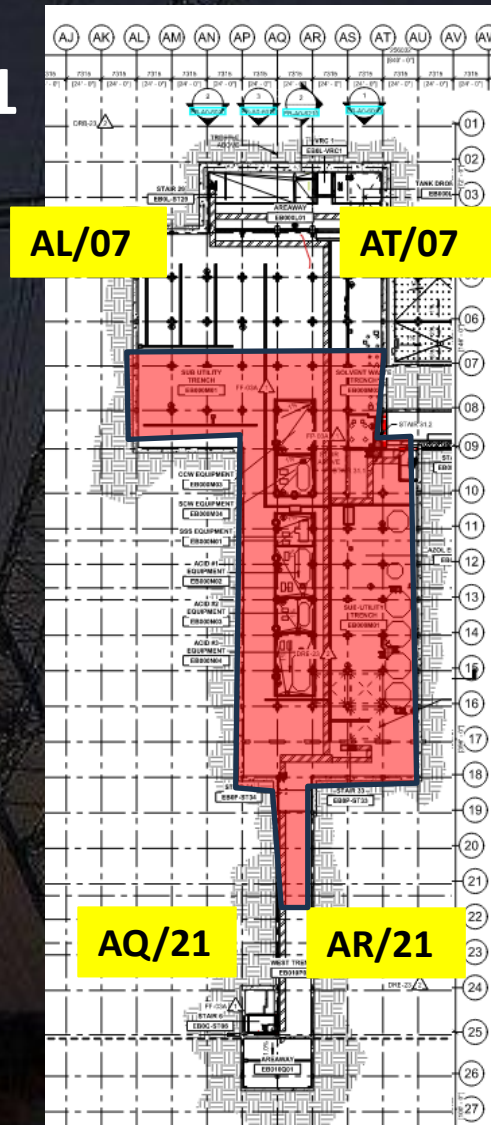




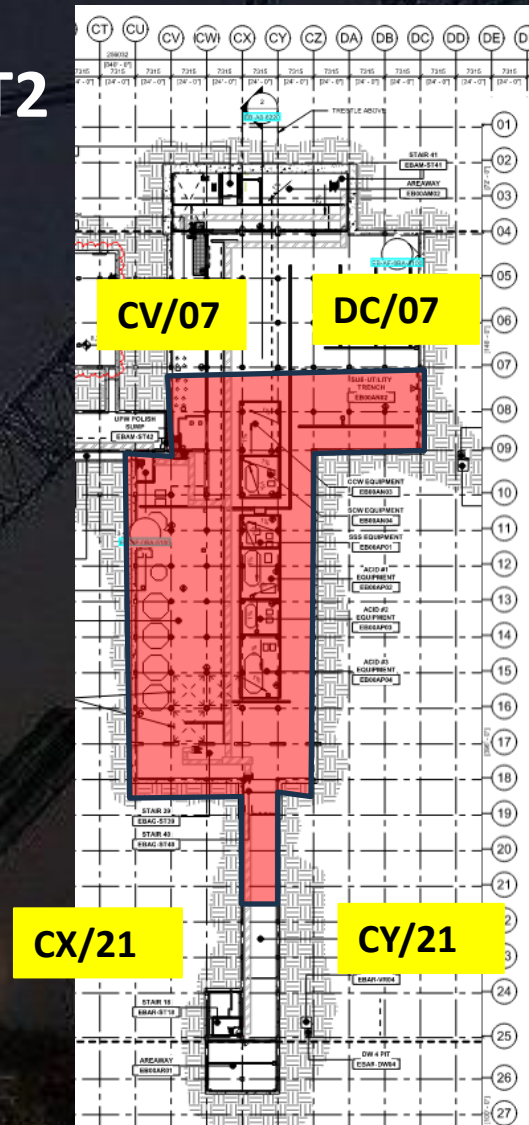
# Daily Coordination Meeting

## Site Logistics - Protected Areas (SUT Level)

**SUT1**



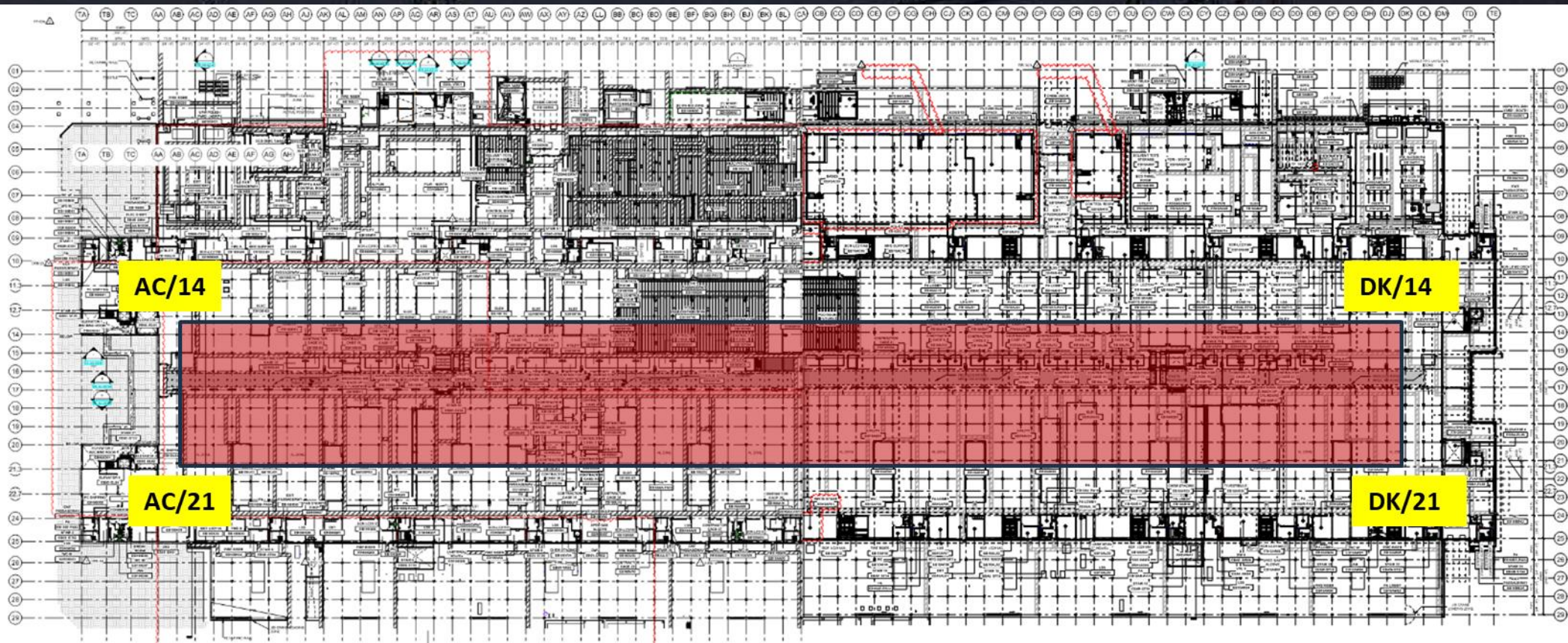
**SUT2**





# Daily Coordination Meeting

## Site Logistics - Protected Areas (Utility Level)

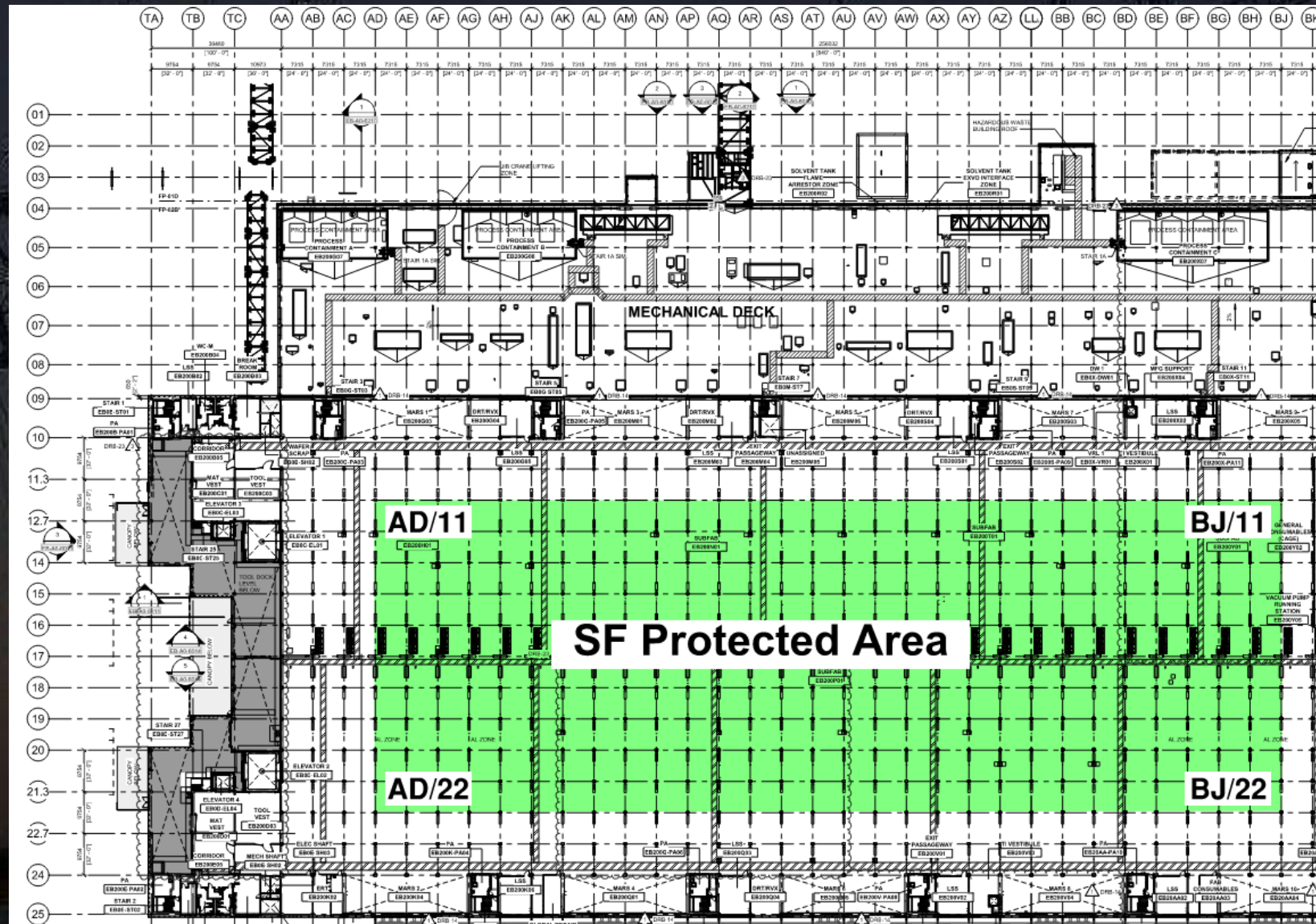






# Daily Coordination Meeting

## Site Logistics - Protected Areas (Subfab Level)

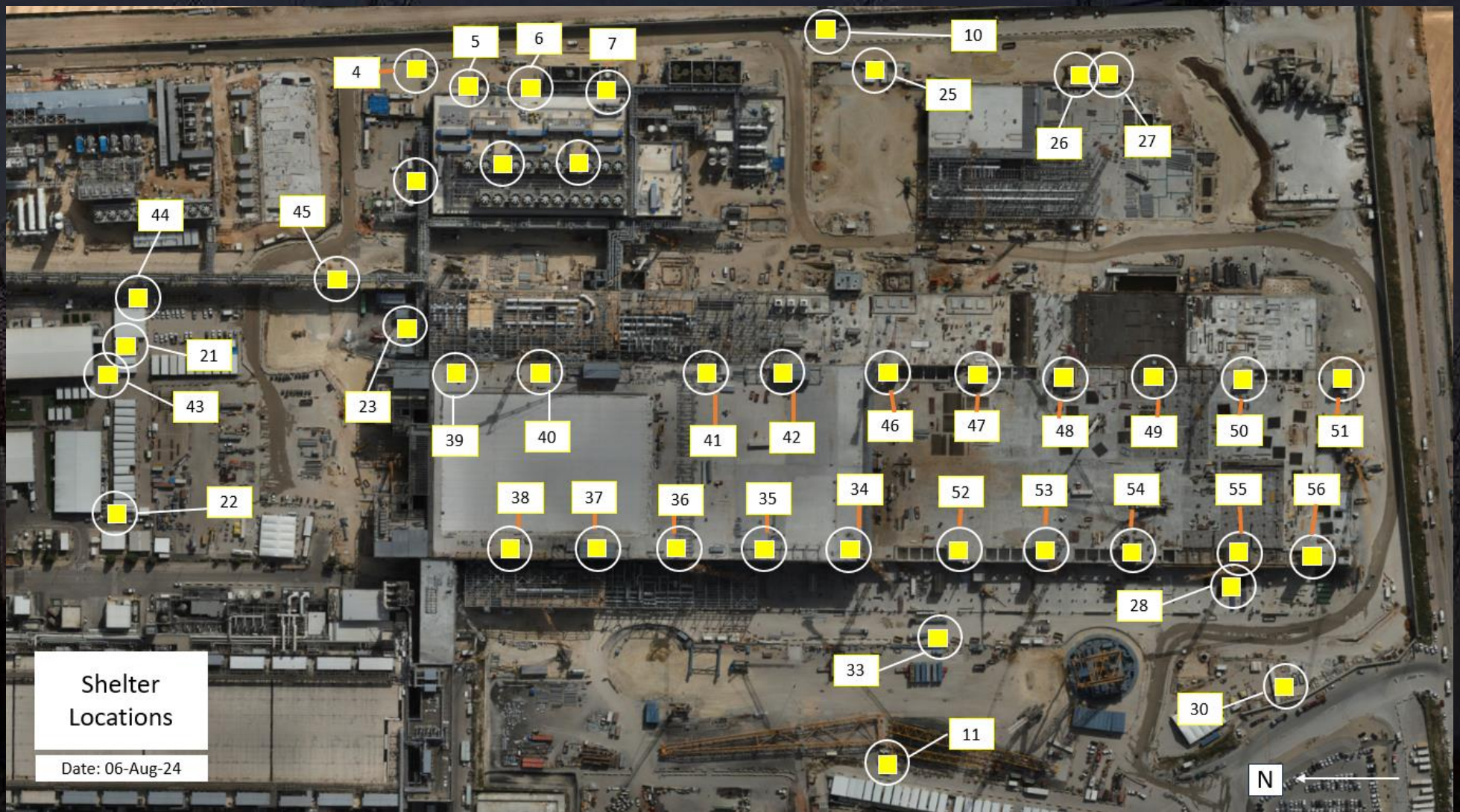




# Daily Coordination Meeting

Site Logistics

Protected Areas





# Communication of incident or Near Misses on Site

We feel there is a need to refresh and clarify the procedure when an injury, incident, or near miss occurs on site. First, it's important to emphasize that all incidents must be reported, regardless of whether they seem minor or significant. Employees should first inform their team leader or supervisor about any occurrence, and from there, it is the supervisor's responsibility to contact the appropriate personnel, whether they are superintendent or safety, to ensure we are aware of the situation.

We must avoid situations where an employee goes to the clinic on their own, and only once they arrive does everyone learn that an incident has occurred on site. It is essential to strengthen the reporting chain in these cases to ensure timely communication and response.

# Daily Coordination Meeting



14:00 Sign In