

Daily Coordination Meeting



Daily Coordination Meeting

General Topics:

- **Maintain Vigilance**

25M HOUR BBQ – 08 APRIL

Volunteer sign-up:



25M HOUR BBQ – 08 APRIL

Please see what is the designated hour for your company

A.S Barzel	11:30-12:15 A
Afcon Contracting Services	
Afcon Control and Automation Ltd	
Avi Cranes	
BCT PIPELINE PROCESSES LTD	
BRAND INDUSTRIAL LTD	
ByNet System Application Ltd	
DVIR.IE LTD	
D&P Clean Room Ltd	
Stage Design Ltd	
GLOBUS WORLDWIDE LOGISTICS	
Yerushalmi Water Cooling Tower LTD	

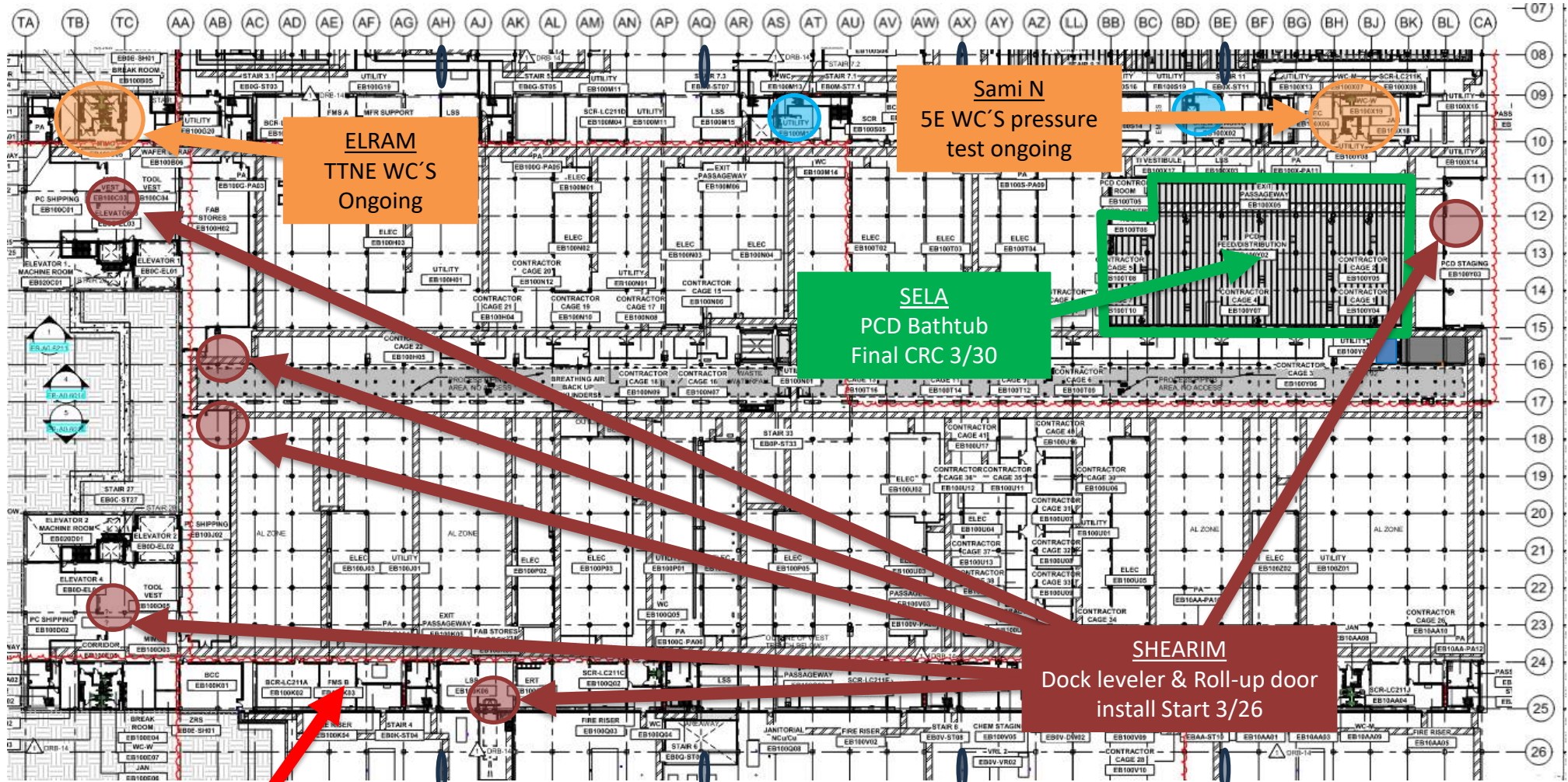
Carmel Bidud LTD (FAB + PSSS)	13:00-13:45 C
CHEMO AHARON LTD (FAB)	
COMBE LTD	
Derech Afar LTD	
E.L Fireproof LTD	
ELECTROSAFE LTD	
Electra Elevator	
EL-MORE ELECTRIC	
ELRAM PROJECT LTD	
ETC Systems LTD	
ORIAYN ADVANCED TECHNOLOGY SYSTEMS, LTD	
Olizki Infrastructures LTD	
ES Entry Systems LTD	
Sami Najami Engineering & Project LTD	

Hoffman Construction	12:15-13:00 B
Talad T.S LTD	
Tavas Cleaning and Security LTD	
TEAM3 LTD	
TM TEAM LTD- Job service	
TM TEAM LTD	
MALCHIMIM BADAROM	
TZUR ESH PROJECTS LTD	
W&W - AFKO Steel LLC	
INTEL	
JACOBS	
HB	
QA- AMTS, Q+,DPS	

Katz Arie Stainless Steel	13:45-14:30 D
HYG STEEL 1990 LTD	
Lesico LTD	
MEGASON ELECTRONIC & CONTROL 1987 LTD	
Meptagon LTD - I&C/ LSS	
Newco - Tec LTD	
Pach Taas LTF (Ashkelon)	
Ranpro LTD	
Rolling Plains Constriction Inc	
Sela Industrial Maintenance 2006LTD	
Shuv Eli Electric Engineering Ltd	
Siemens Industrial LTD	
SIG Industrial LTD	
SK ENGINEERING & PROJECT (CUB)	
Skyline Cranes& Technologies	



UTILITY LEVEL MOD1



Carmel Duct
FMS-B
Removing scaffold
4/2

ELRAM
TTNE WC'S
Ongoing

Sami N
5E WC'S pressure
test ongoing

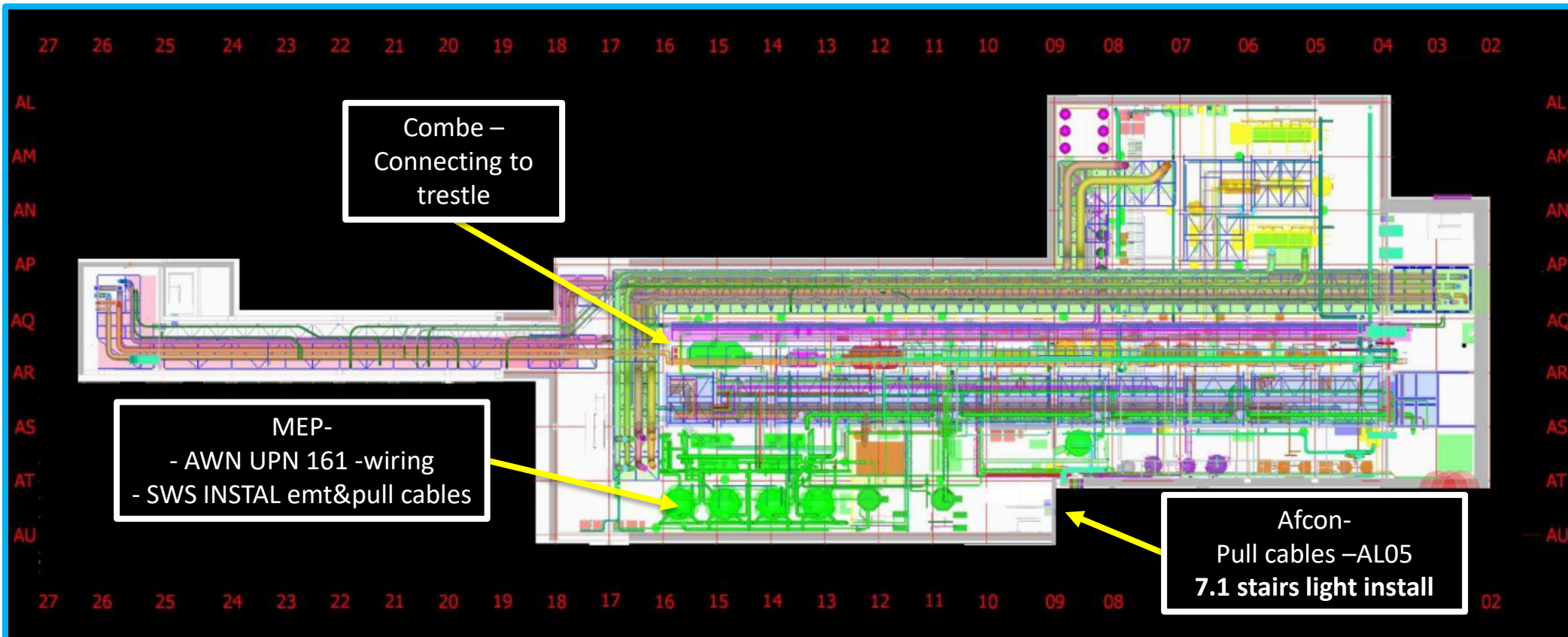
SELA
PCD Bathtub
Final CRC 3/30

SHEARIM
Dock leveler & Roll-up door
install Start 3/26

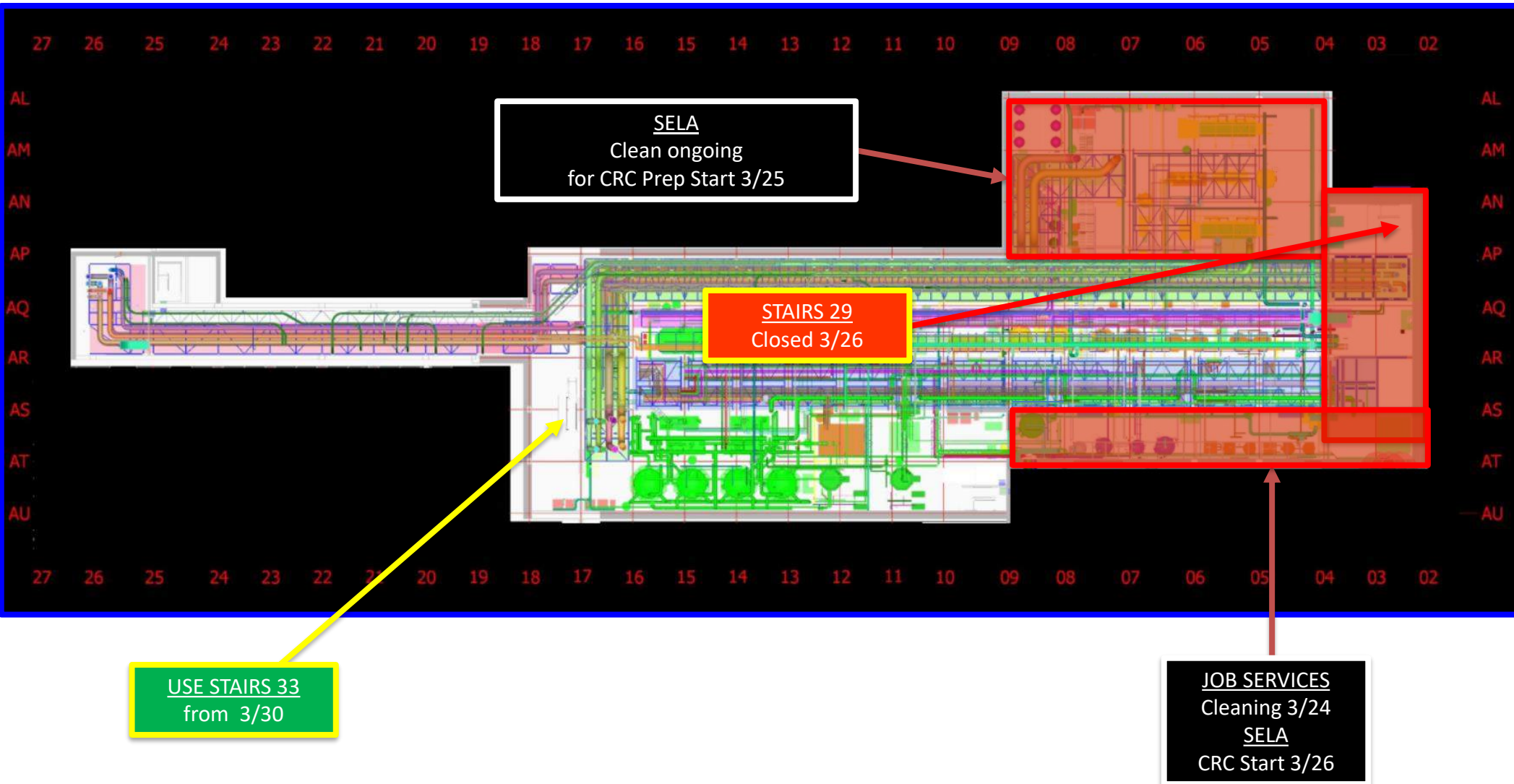
ELRAM
Stairs 7.1
Chem stag
TTNW OH door
Break room E



SUT 38.1 LEVEL



SUT 38.1 LEVEL



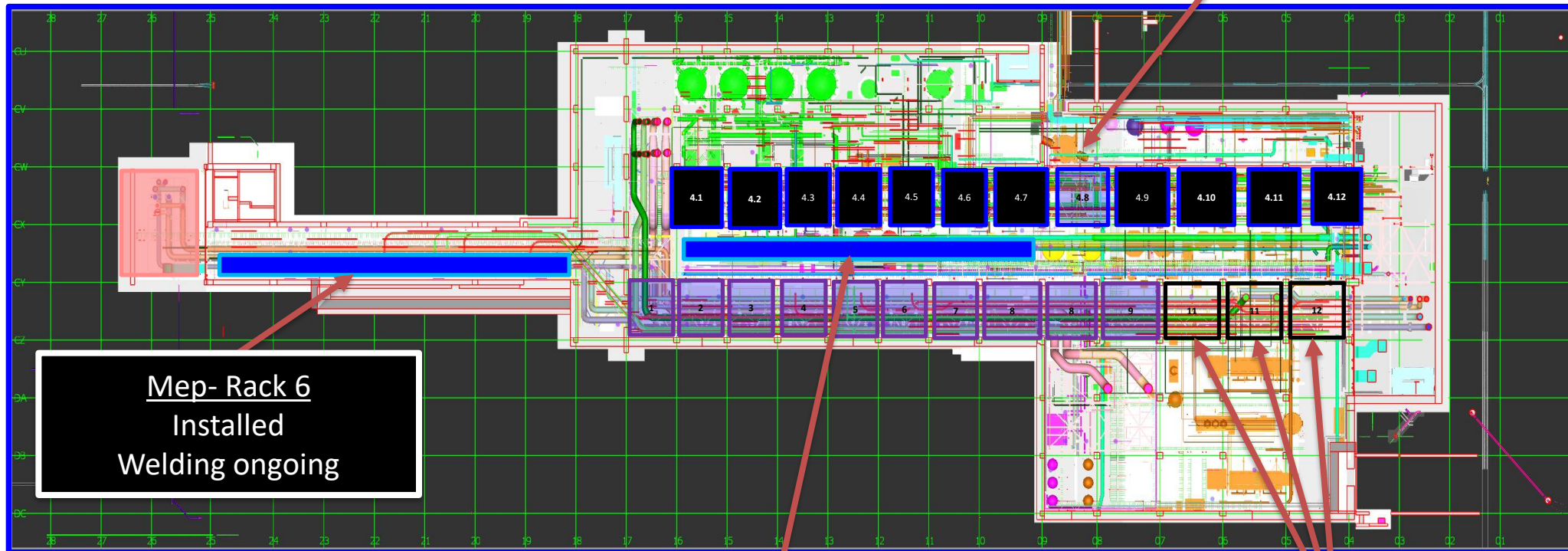
SUT 38.2 LEVEL

Combe- Rack 4 Upper

M#4.9- 20.3

M#4.10- 24.3

M#4.11- 26.3



Mep- Rack 6
Installed
Welding ongoing

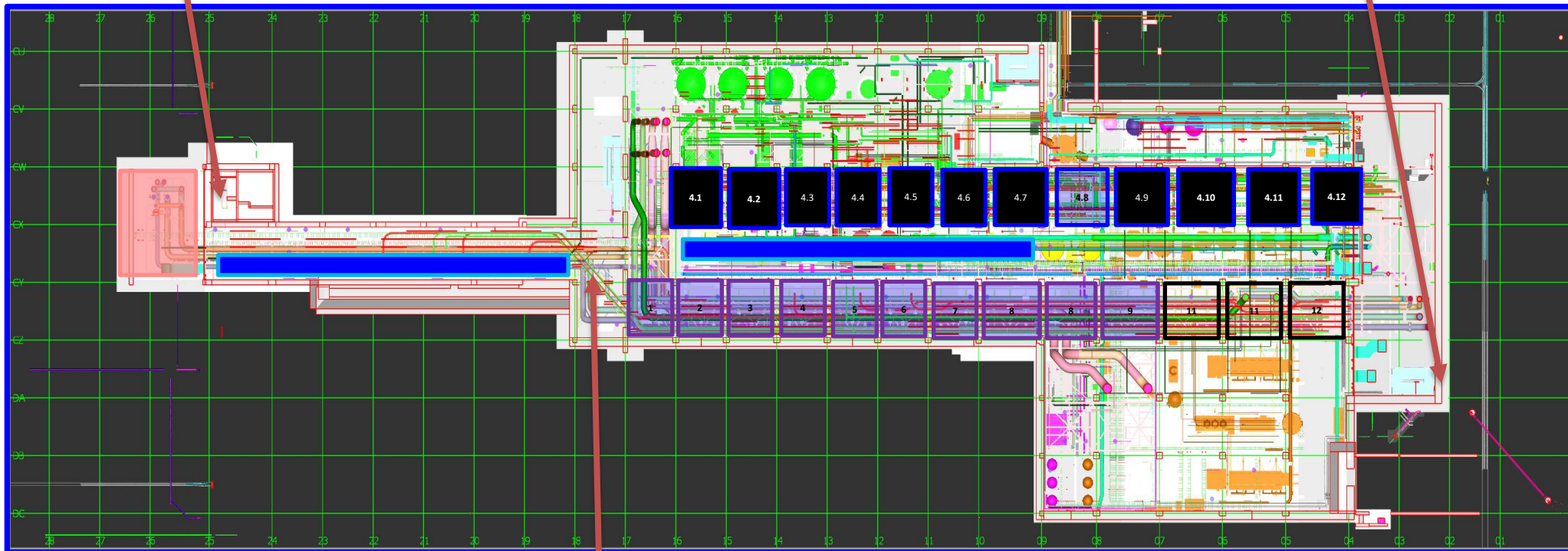
Combe- Rack 1B
Started today!

Mep- Rack 2
M#10&11&12 pipe weld

SUT 38.2 LEVEL ACCES

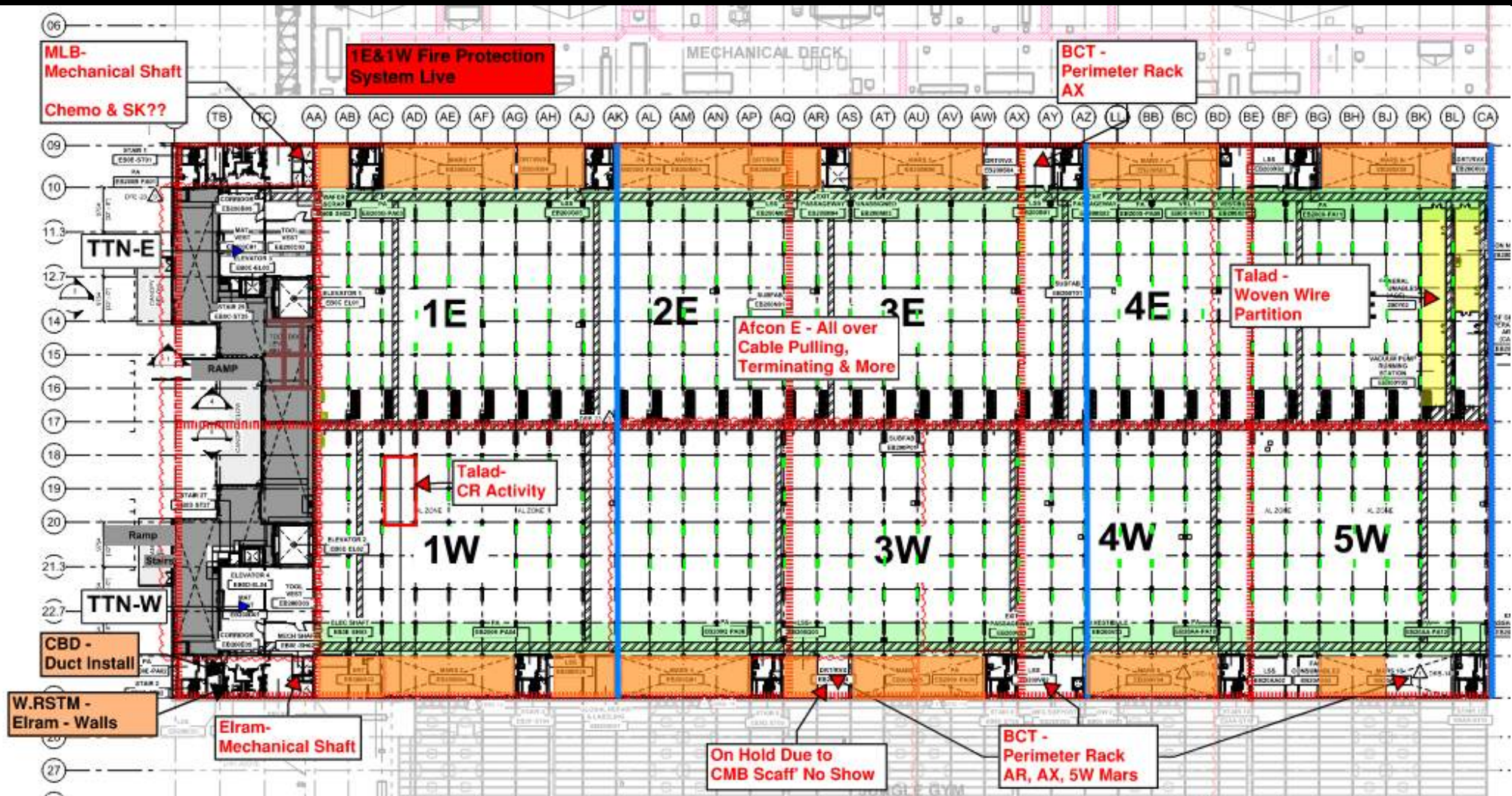
Stairs 18
Access to West SUT2

Temp Stairs
Access to East/center SUT2

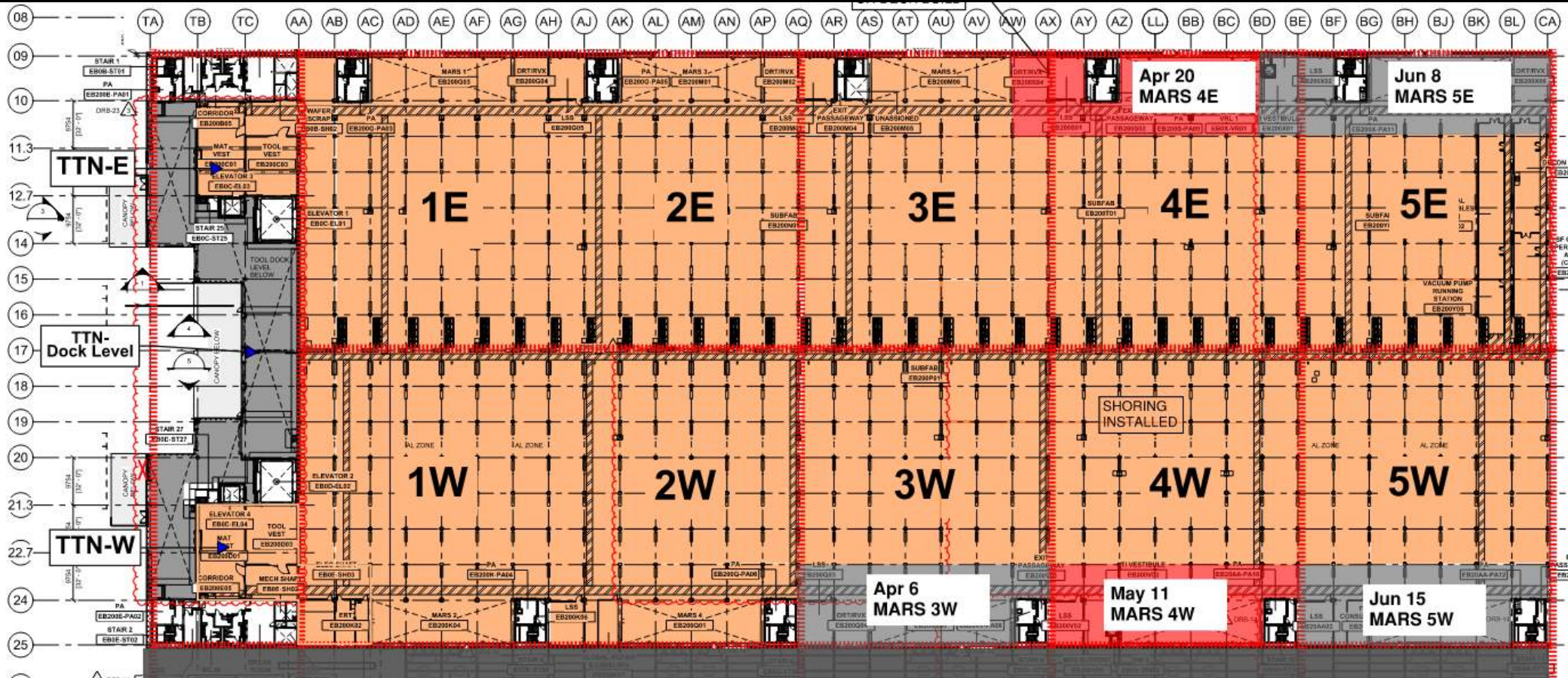


Stairs West to Center
Removed
Will be back Sunday 4/6

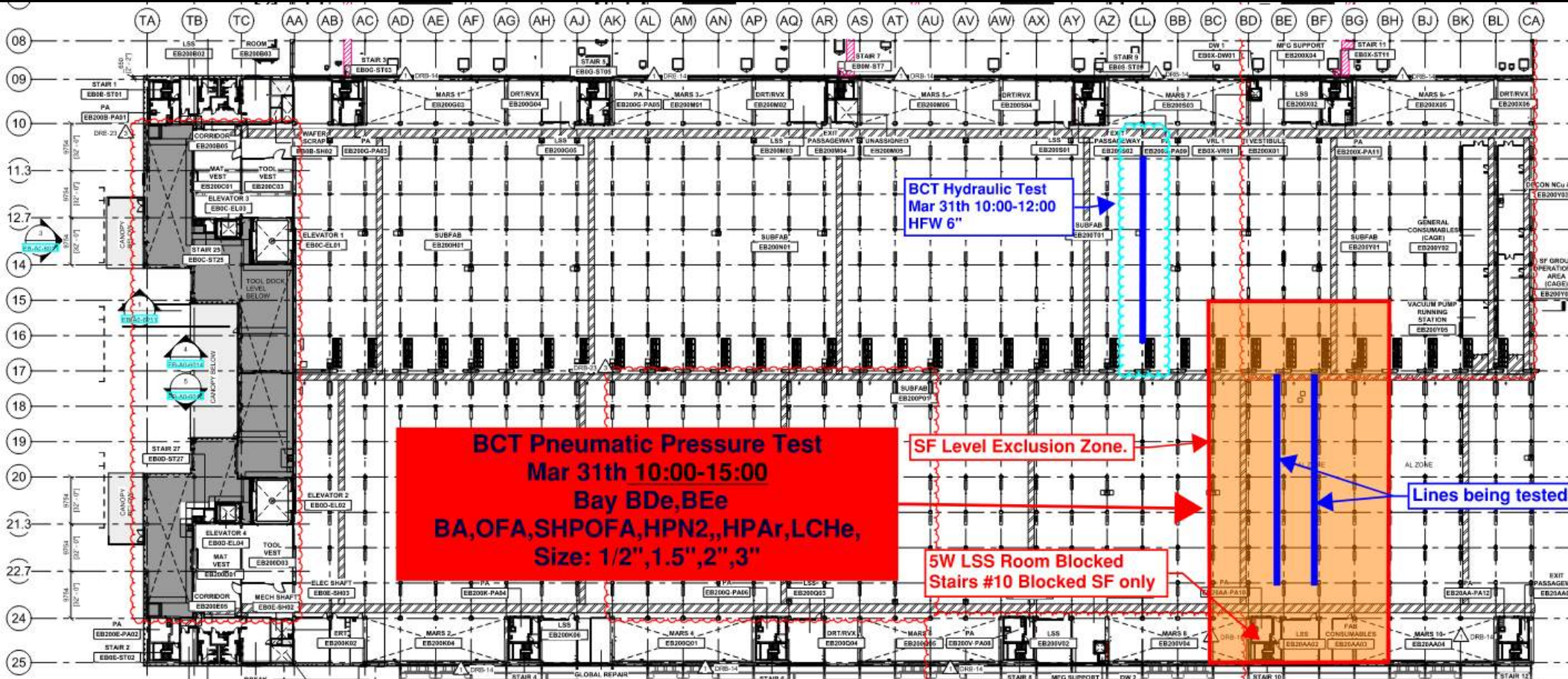
SUBFAB BUILDOUT MOD 1



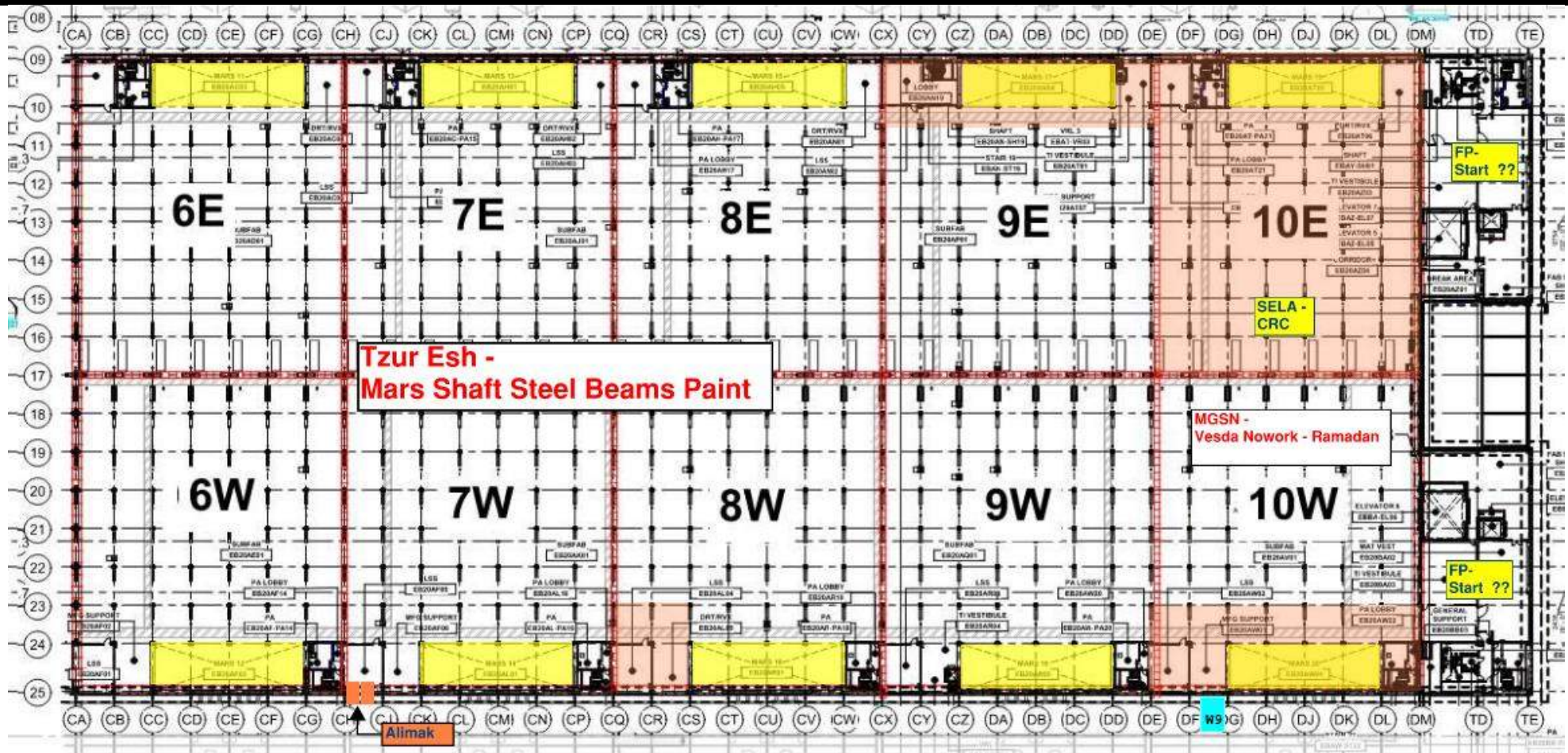
SUBFAB CRC TOPCOAT

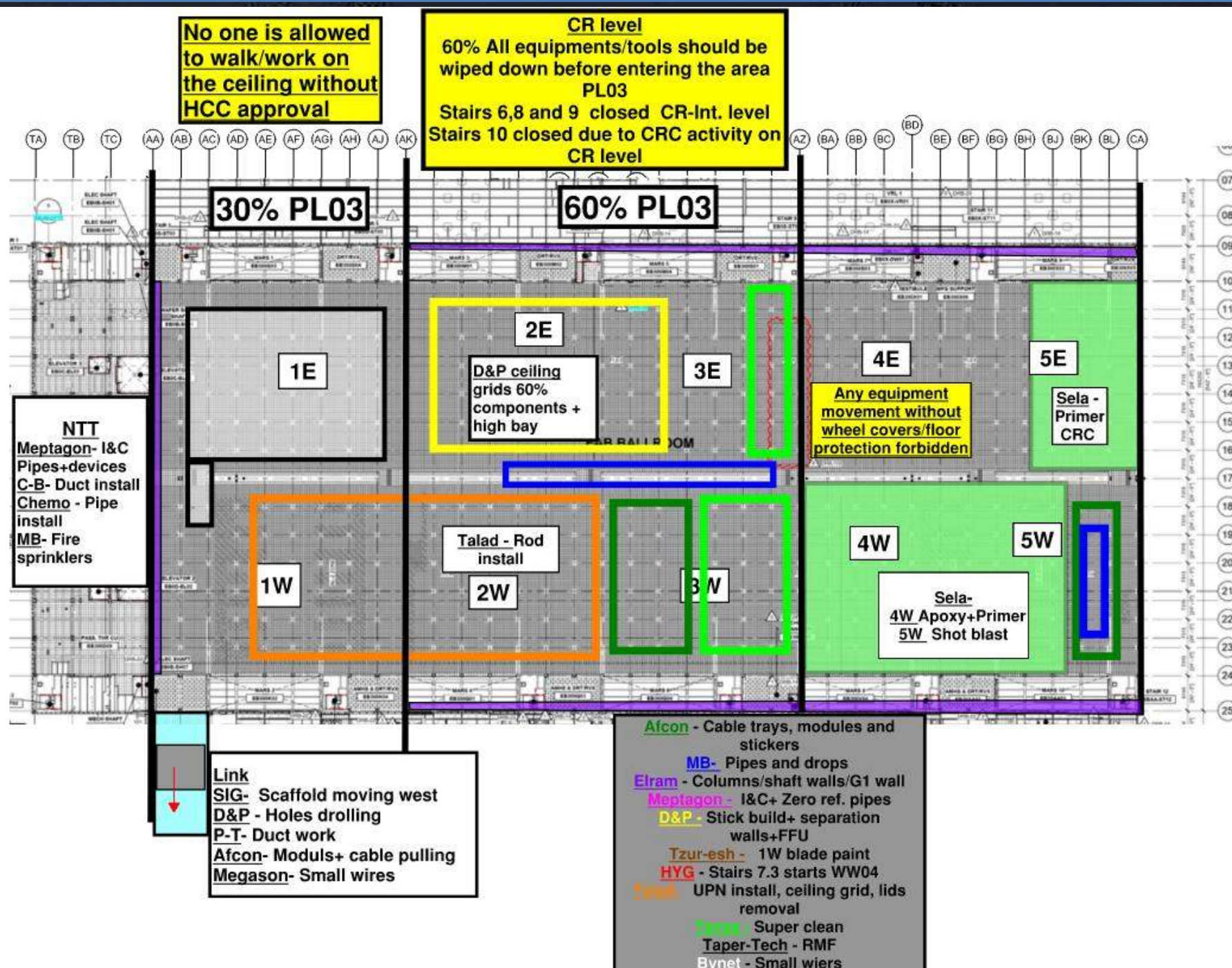


BCT Pressure Test Today



SUBFAB BUILDOUT MOD 2







Afcon - Cable trays, modules and stickers

MB - Fire sprinklers

Elram - Gypsum/G1 wall

Chemo - Skids and pipes

SK - IA pipes

Tzur-esh - Paint+ touch ups

WW - Cat walk

RPC - 4DA/5DA FP

Tavas - Super clean

Bynet - Communication weirs

Megasone - Speakers

Meptagon - I&C

Int. level

60% All equipments/tools should be wiped down before entering the area PL03

Int. level

Do not cross/remove the fence in 60%-100%

30%

60%

NETT

Chemo- Racks+pipes ongoing

Megasone - Small wires+Speakers

RPC- FP rack/girts

NWTT

Chemo- Racks

MB- FS install

AFA- Vesda

RPC- started FP racks

WW/SN - Handrail install

Elram - G1 metal sheet

TMT - Penetrations for

Afcon, D&P, Talad and MB

1E

2E

3E

4E

5E

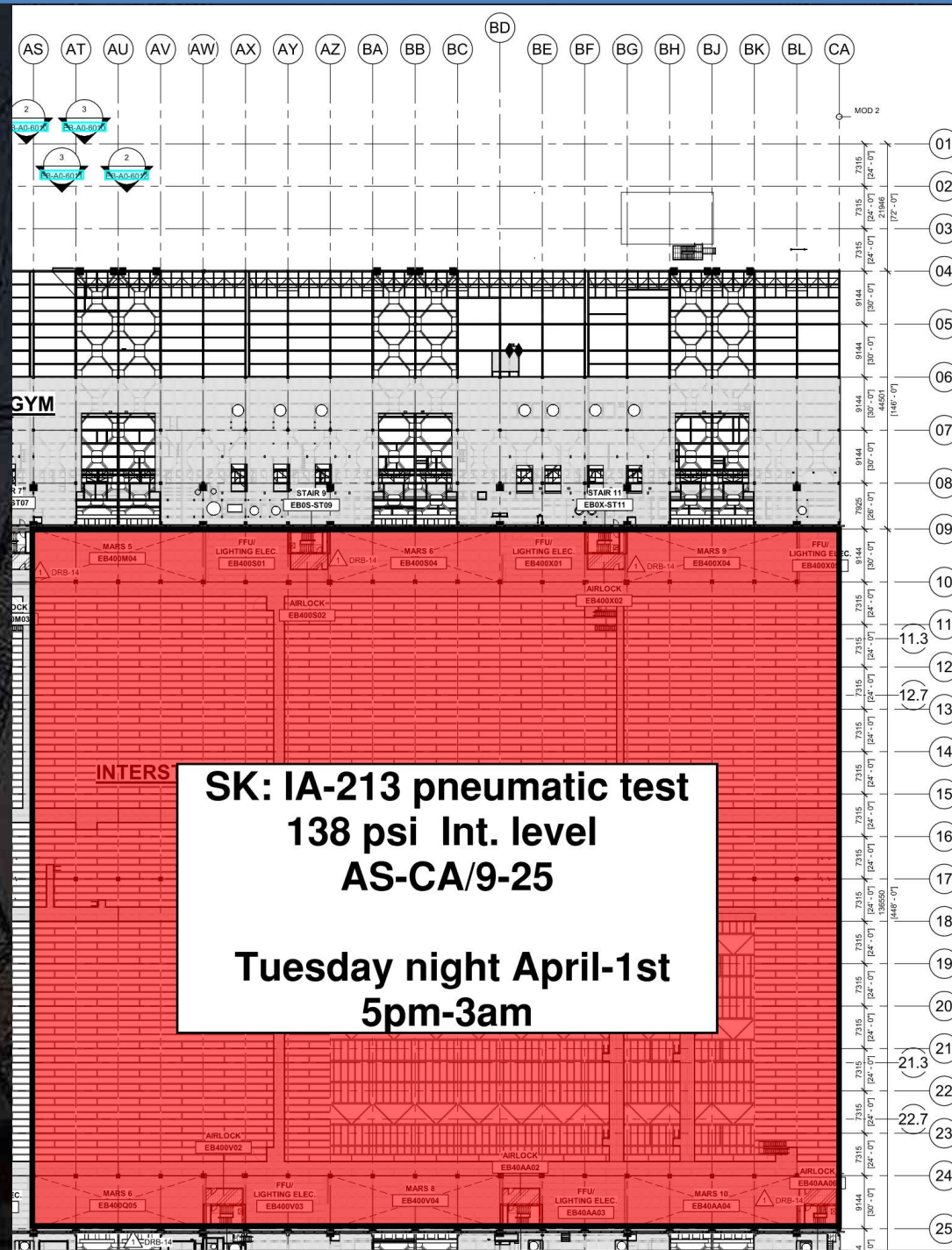
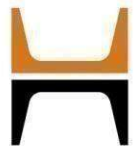
1W

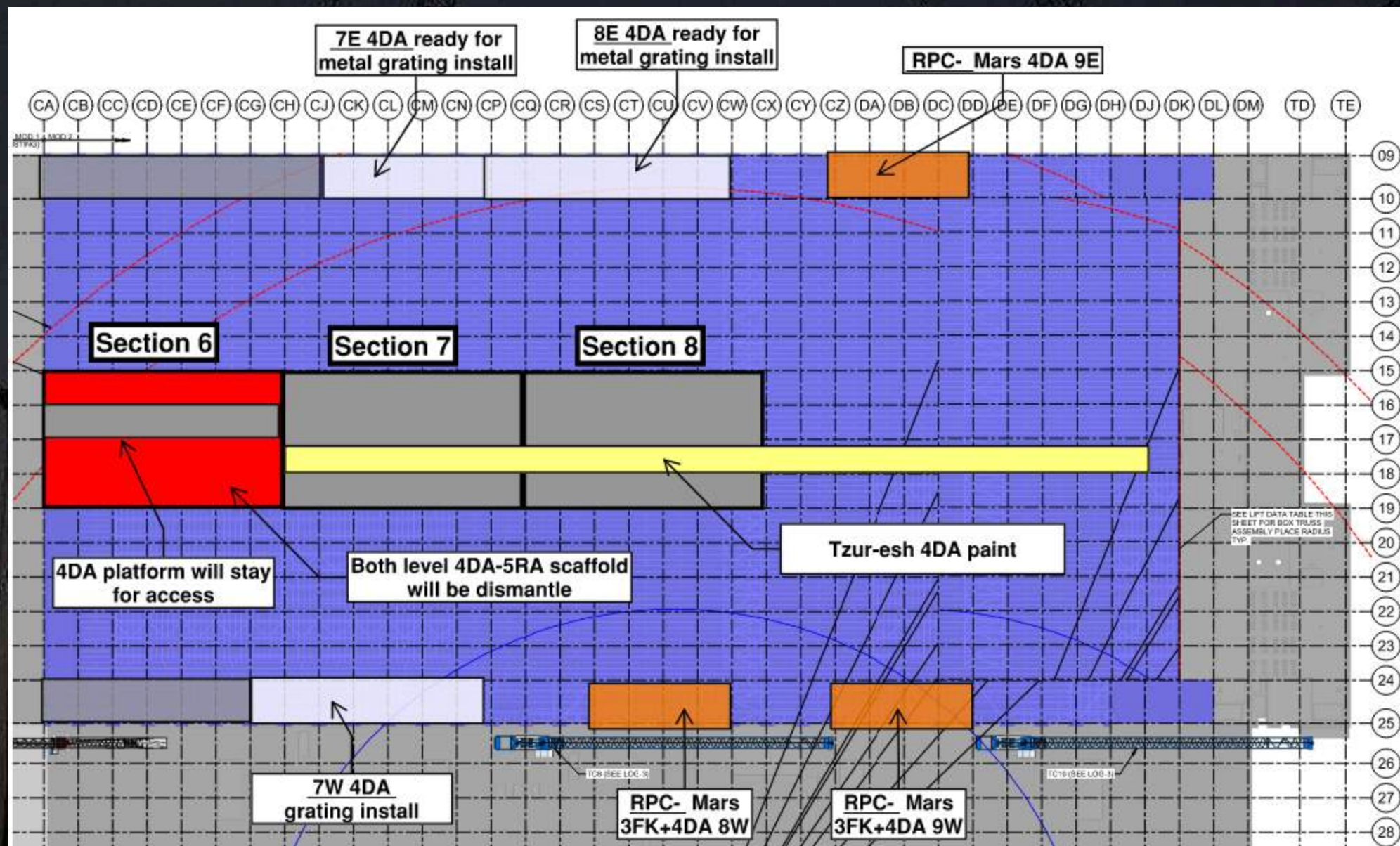
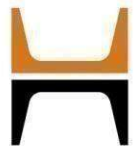
2W

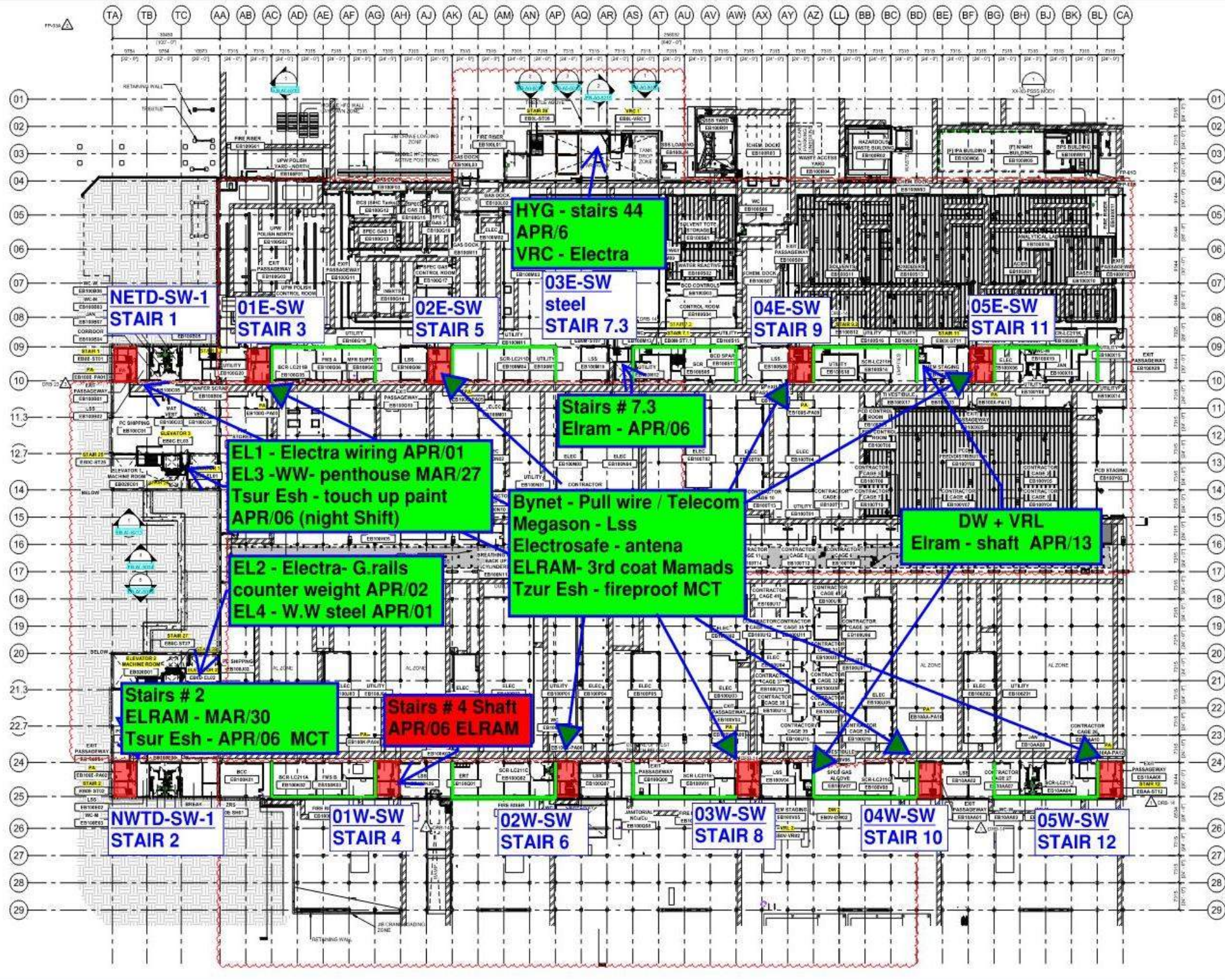
3W

4W

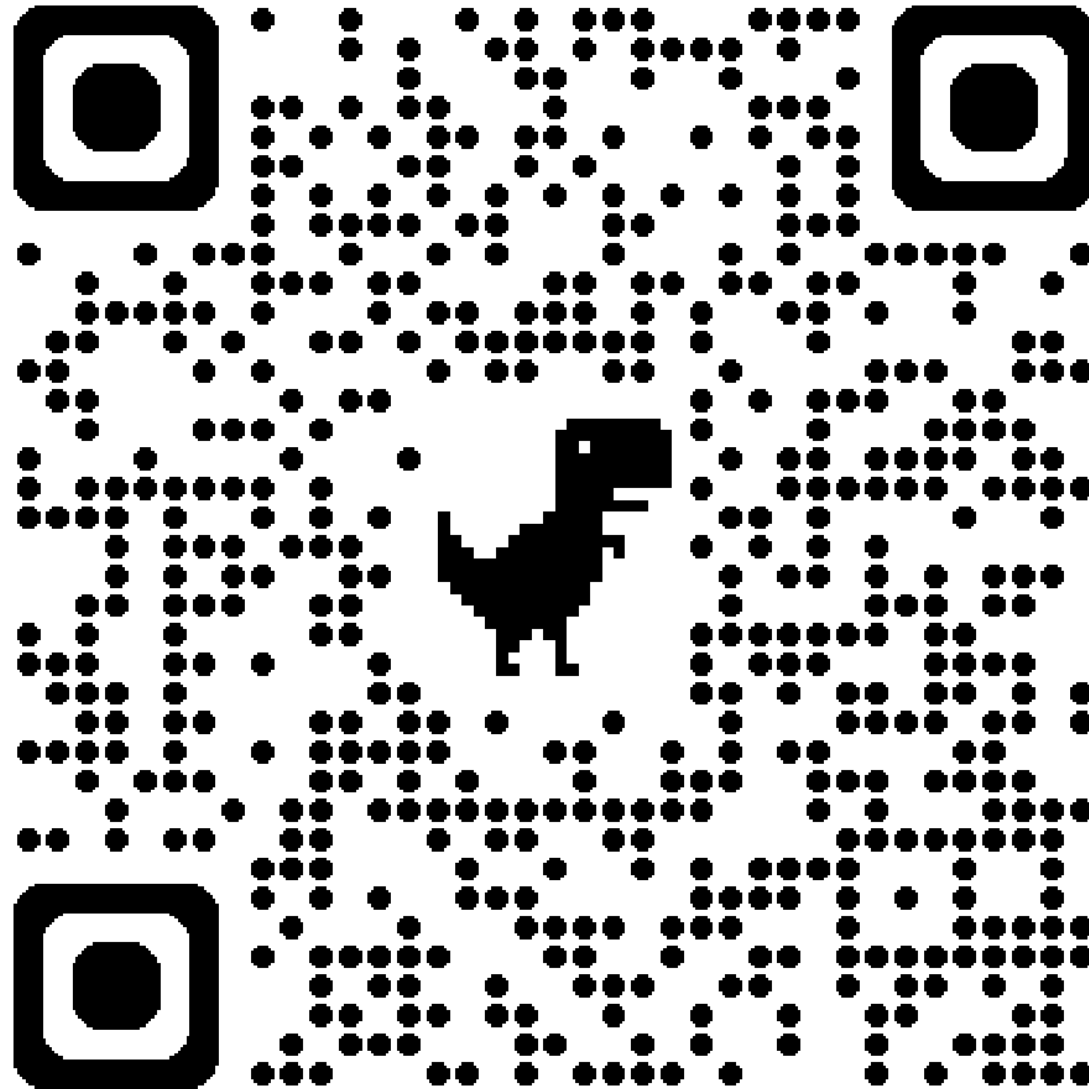
5W



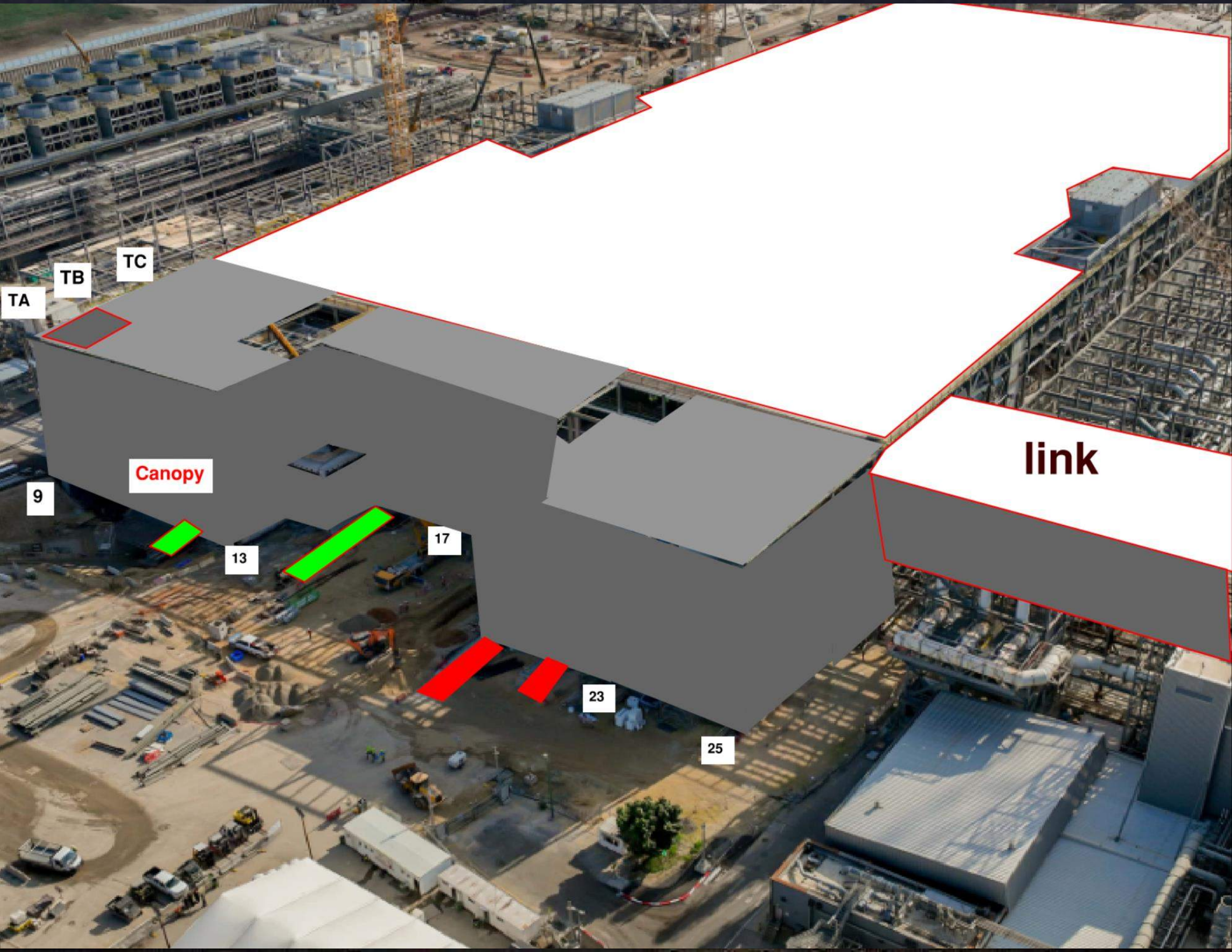




Siding Penetration Request Form



Subcontractor must fill out and submit all required cells in order to get a penetration cut through the siding.



TA

TB

TC

Canopy

9

13

17

23

25

link

MOD 2 EASTSIDE GIRTS/SIDING



2752/ 2751	2742/ 2741	2732/ 2731	2722/ 2721	2712/ 2711	2552/ 2551	2542/ 2541	2532/ 2531	2522/ 2521	2512/ 2511	2502/ 2501
---------------	---------------	---------------	---------------	---------------	---------------	---------------	---------------	---------------	---------------	---------------

READY FOR GIRTS



INSTALLING GIRTS



READY FOR PANELS



PANELS INSTALLED



MOD 2 WESTSIDE GIRTS/SIDING

READY FOR GIRTS 

INSTALLING GIRTS 

READY FOR PANELS 

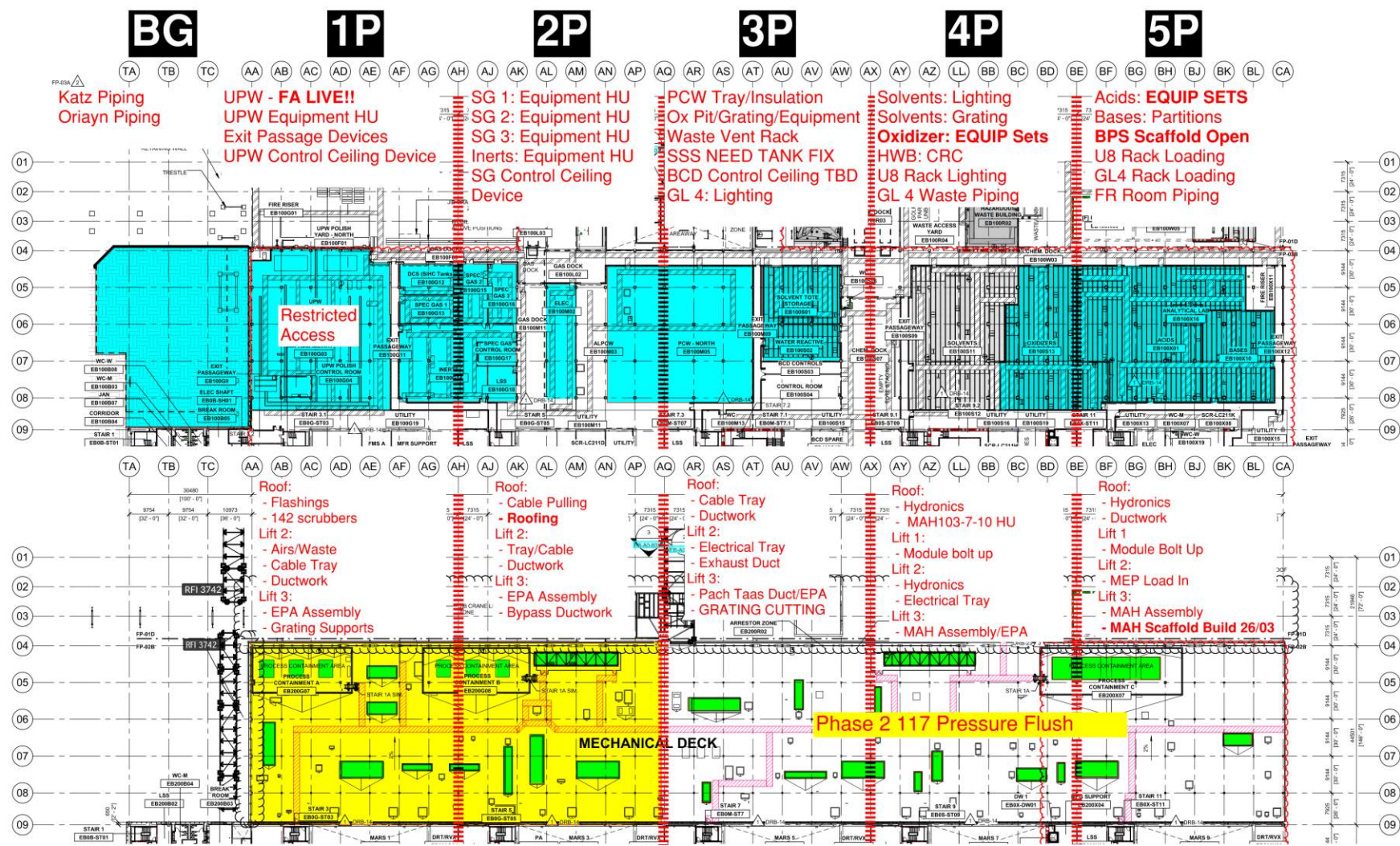
PANELS INSTALLED 



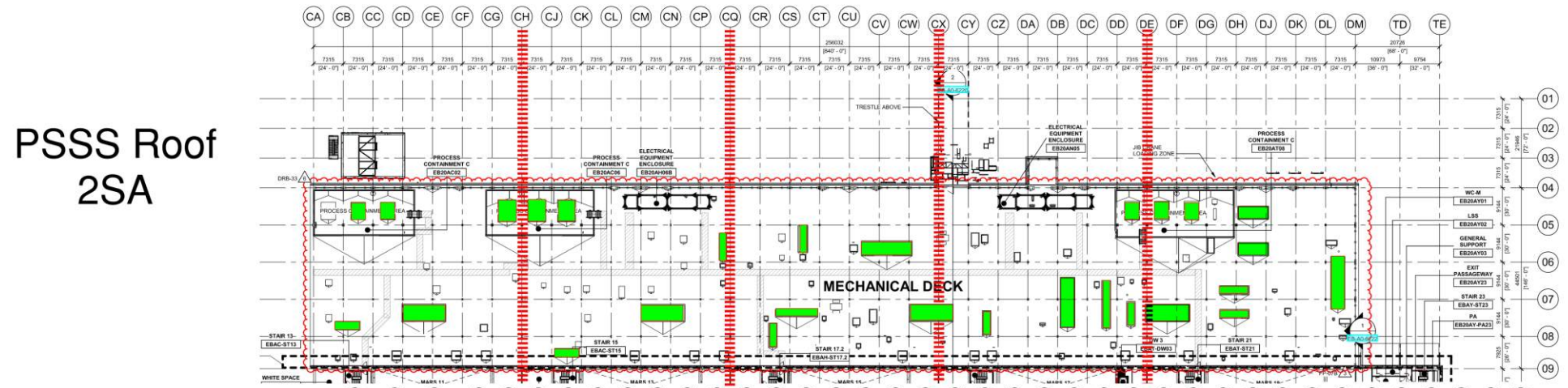
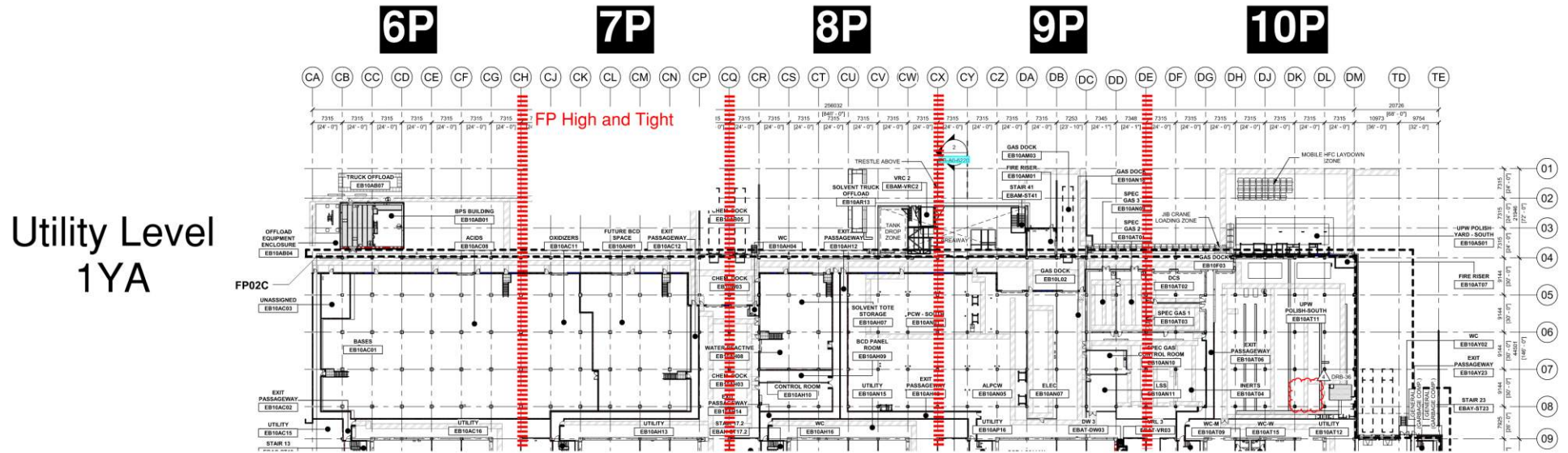
PSSS.1

Utility Level
1YA

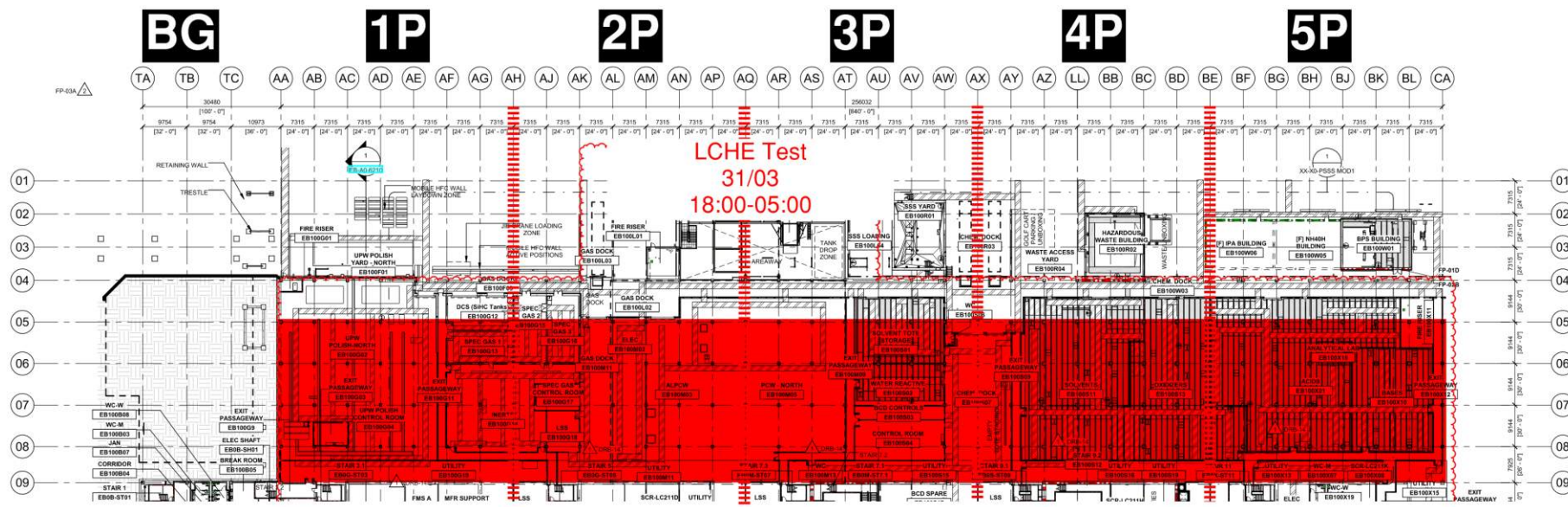
PSSS Roof
2SA



PSSS.2



PSSS Pressure Testing



Utility Level 1YA

BGY GN2 Bursting Zone Tomorrow



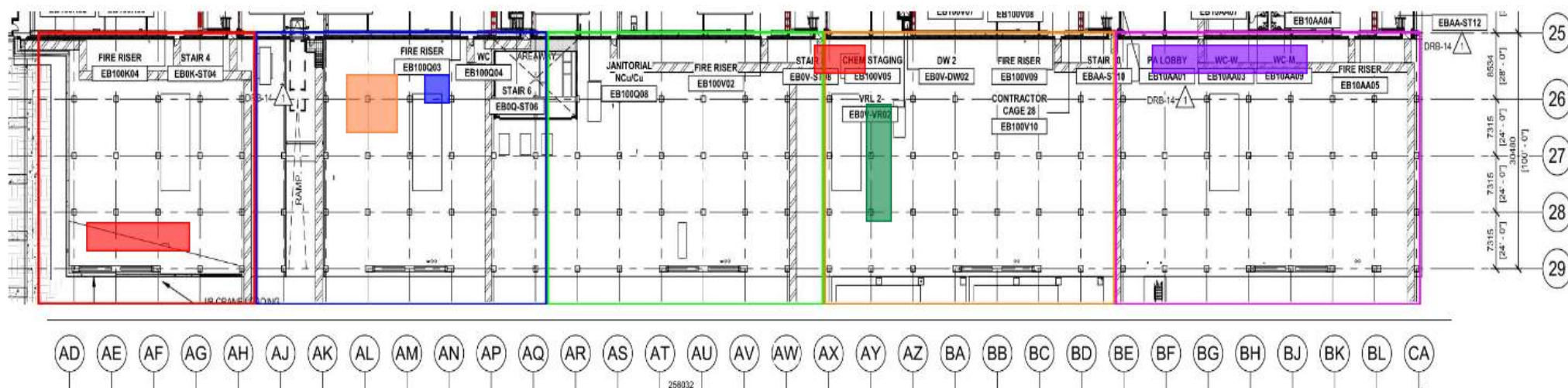
WJG – UL

* Pach Taas - fixing rejects on UPN 138

* Carmel Bidud - connection of last duct to AH
 * Pach Taas - completion of spools and lindapters on UPN 138

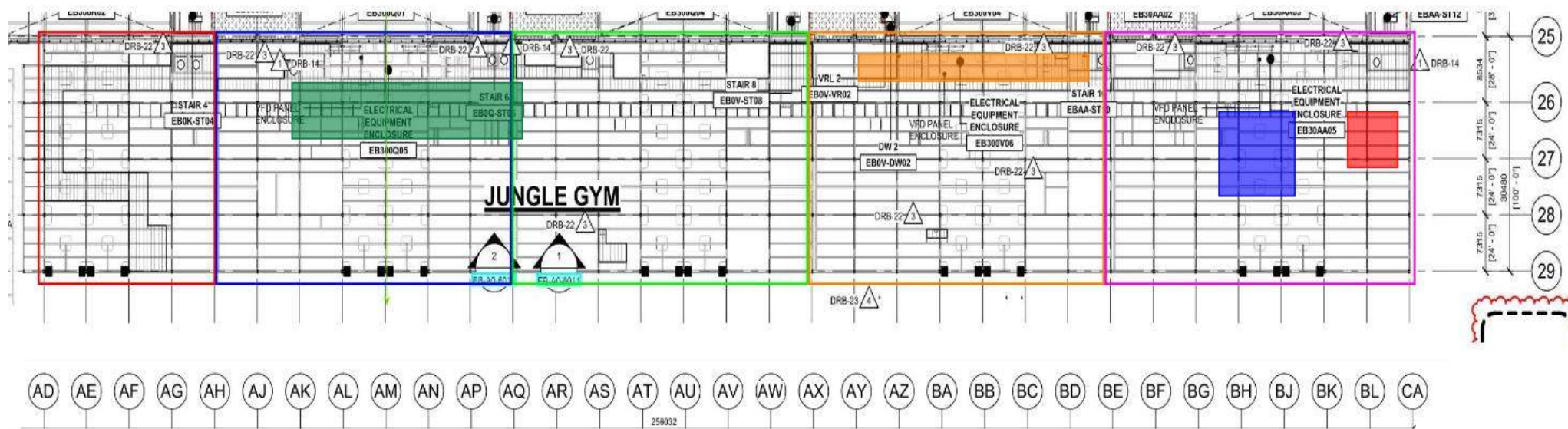
*Stage design - erection of Pach Taas scaffold
 *Afcon - Installation of lighting and cable pulling

* ASD - erection of scaffold for VFD derains
 * W&W - welding connections on CA line for MOD2 steel



WJG – Lift 2

	* Chemo - performing passivation to UPN 111		* Afcon - installation of cable trays	* Chemo - continuing insulation * SK - performing connections to MAH
--	---	--	---------------------------------------	---



WJG – Lift 3

			* Pach Taas - working on installation of bypass ducts	* SN -moving gratings for handrai installation
--	--	--	---	--

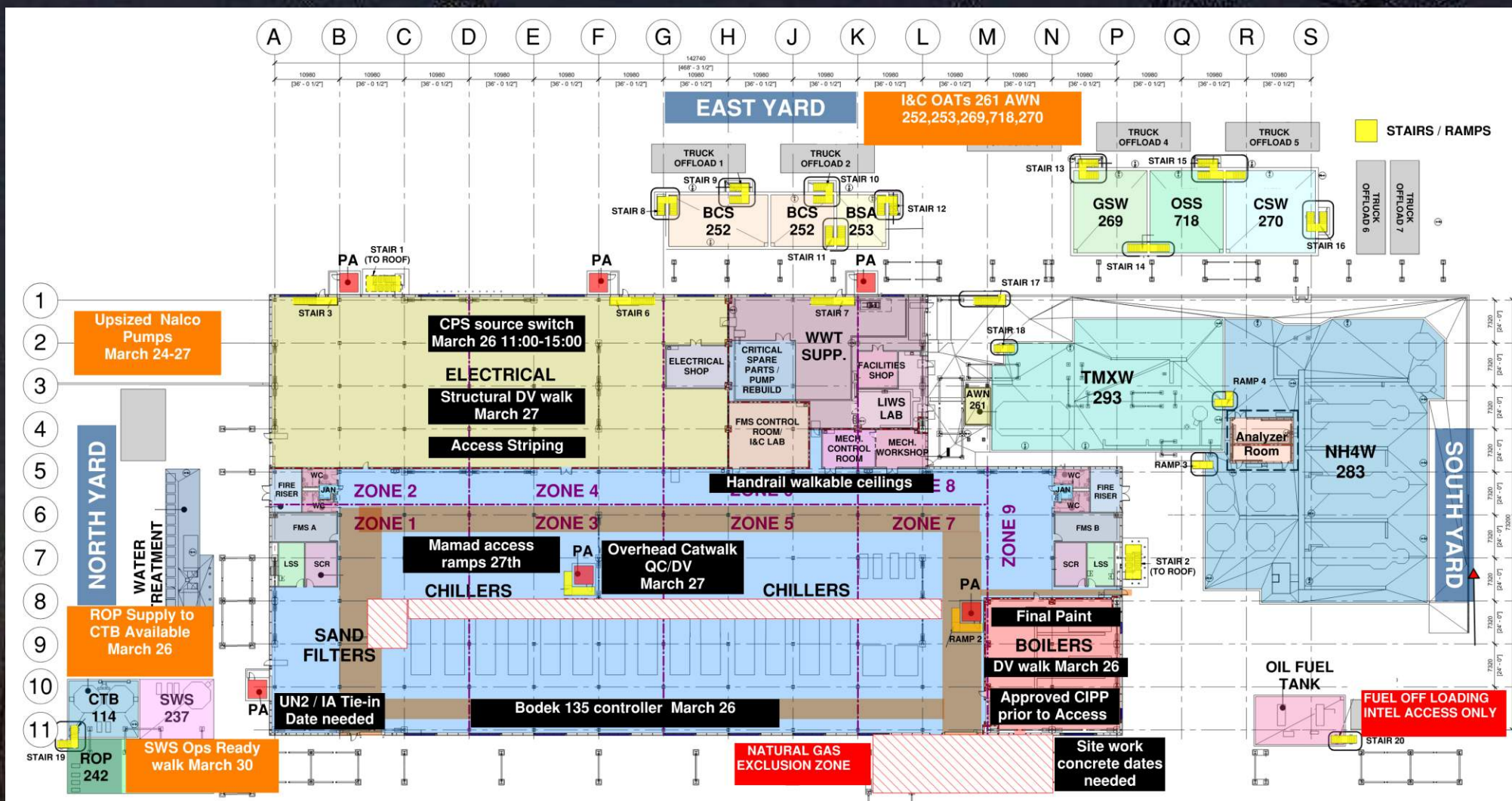


CUB 1 6 working days to room ready

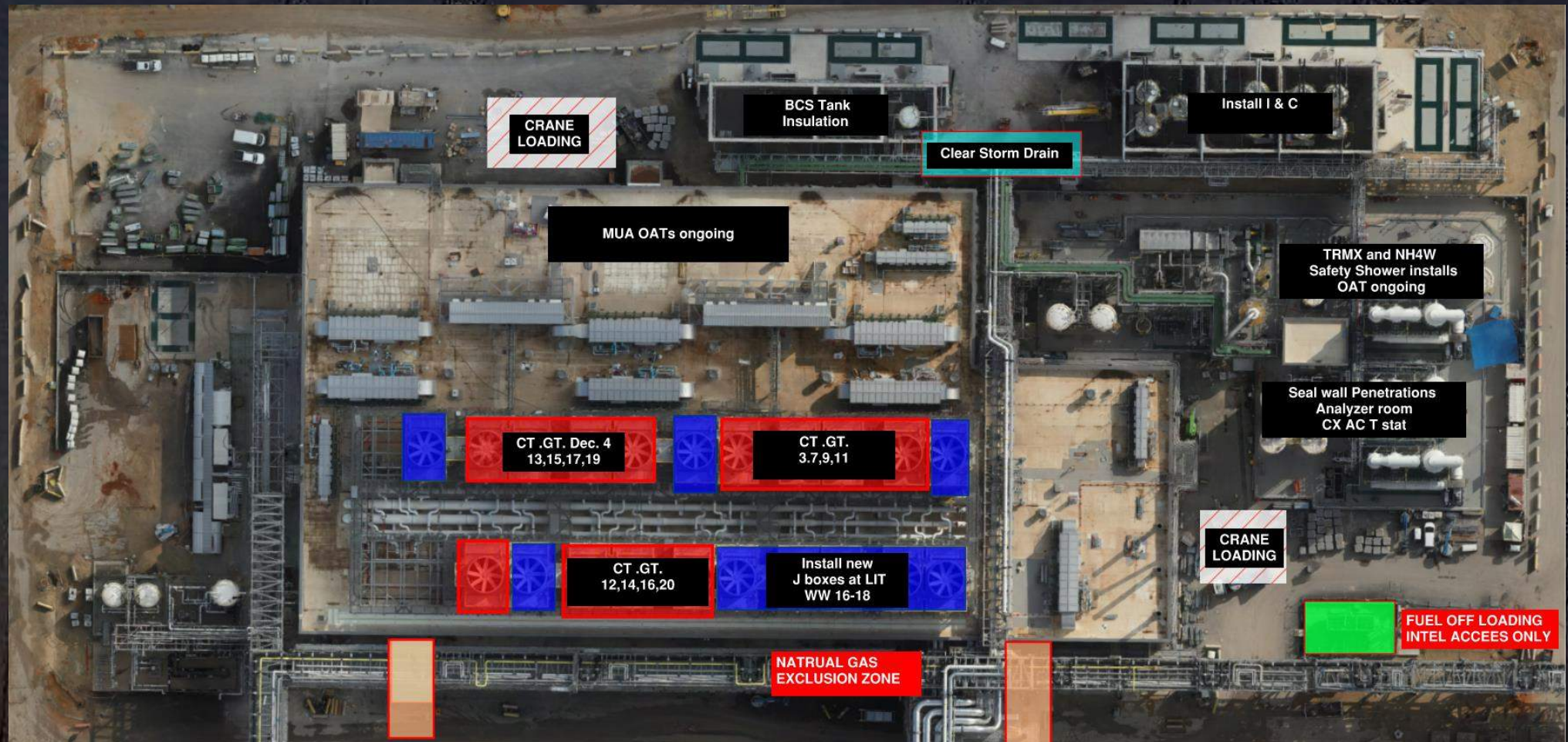


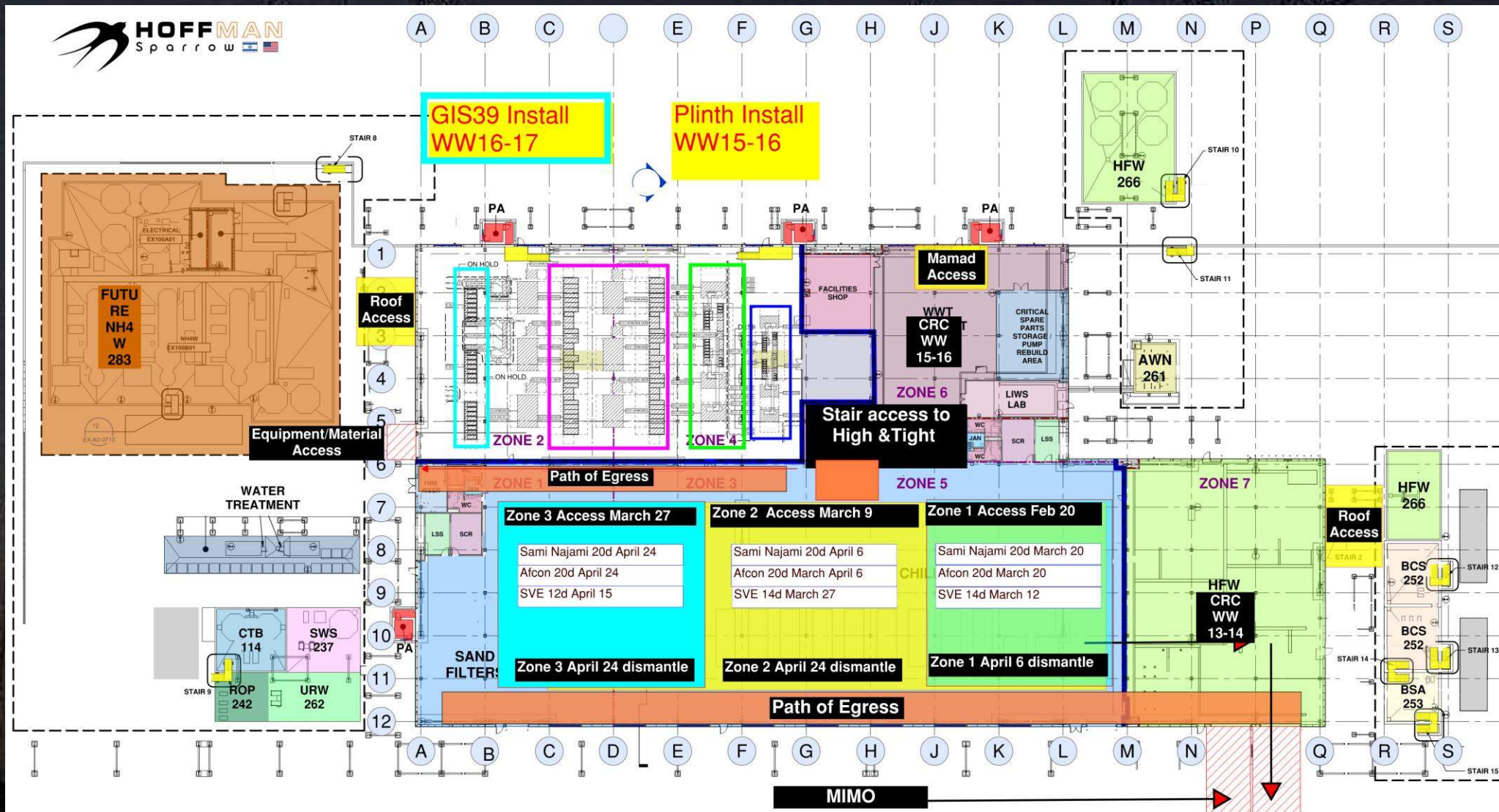


CUB 1

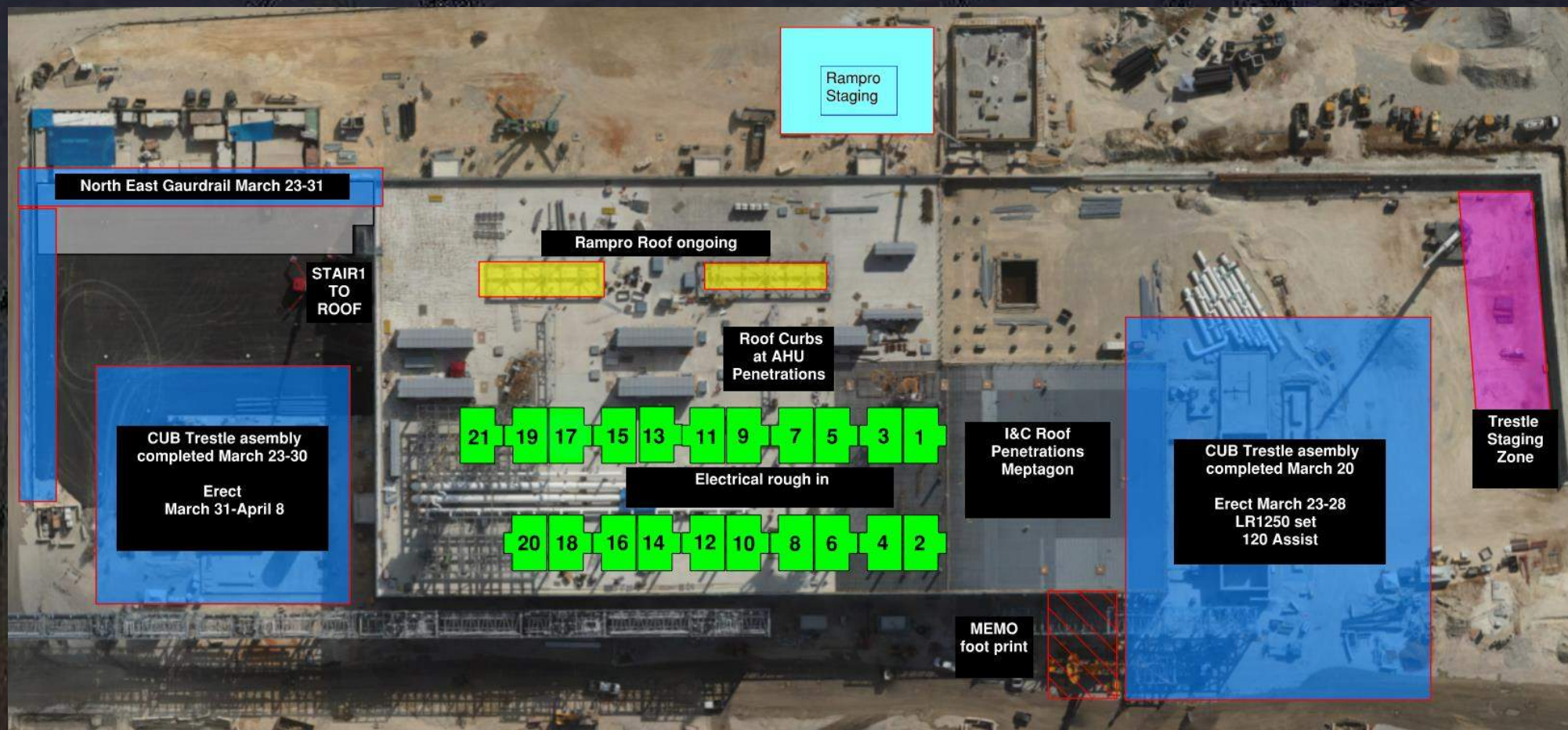


CUB 1 – EXTERIOR/ROOF





CUB 2 – EXTERIOR/ROOF

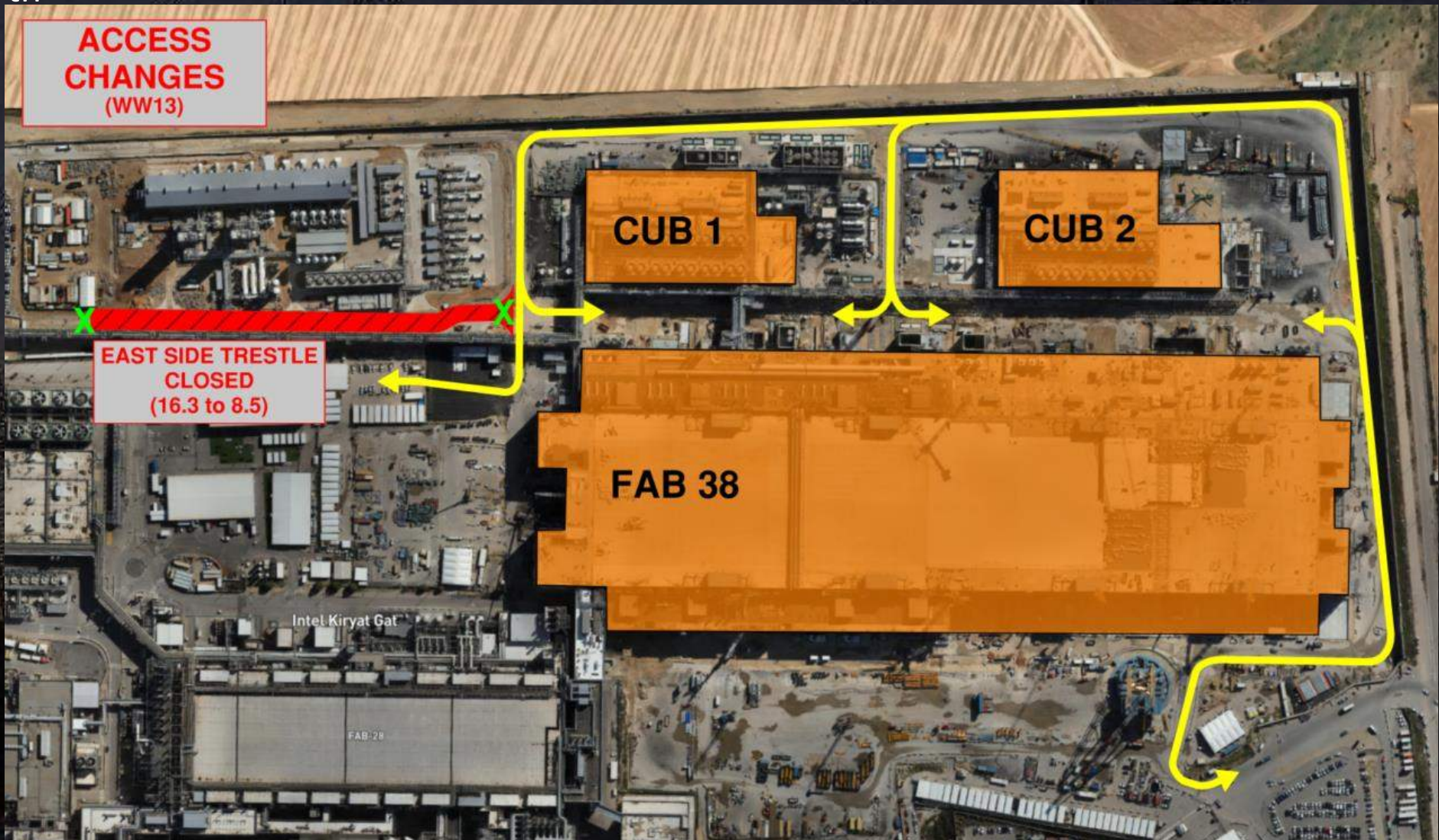




Daily Coordination Meeting

Site Logistics

North





HOFFMAN CONSTRUCTION COMPANY



Daily Coordination Meeting

Site Logistics
North





HOFFMAN CONSTRUCTION COMPANY



Daily Coordination Meeting

Site Logistics
South

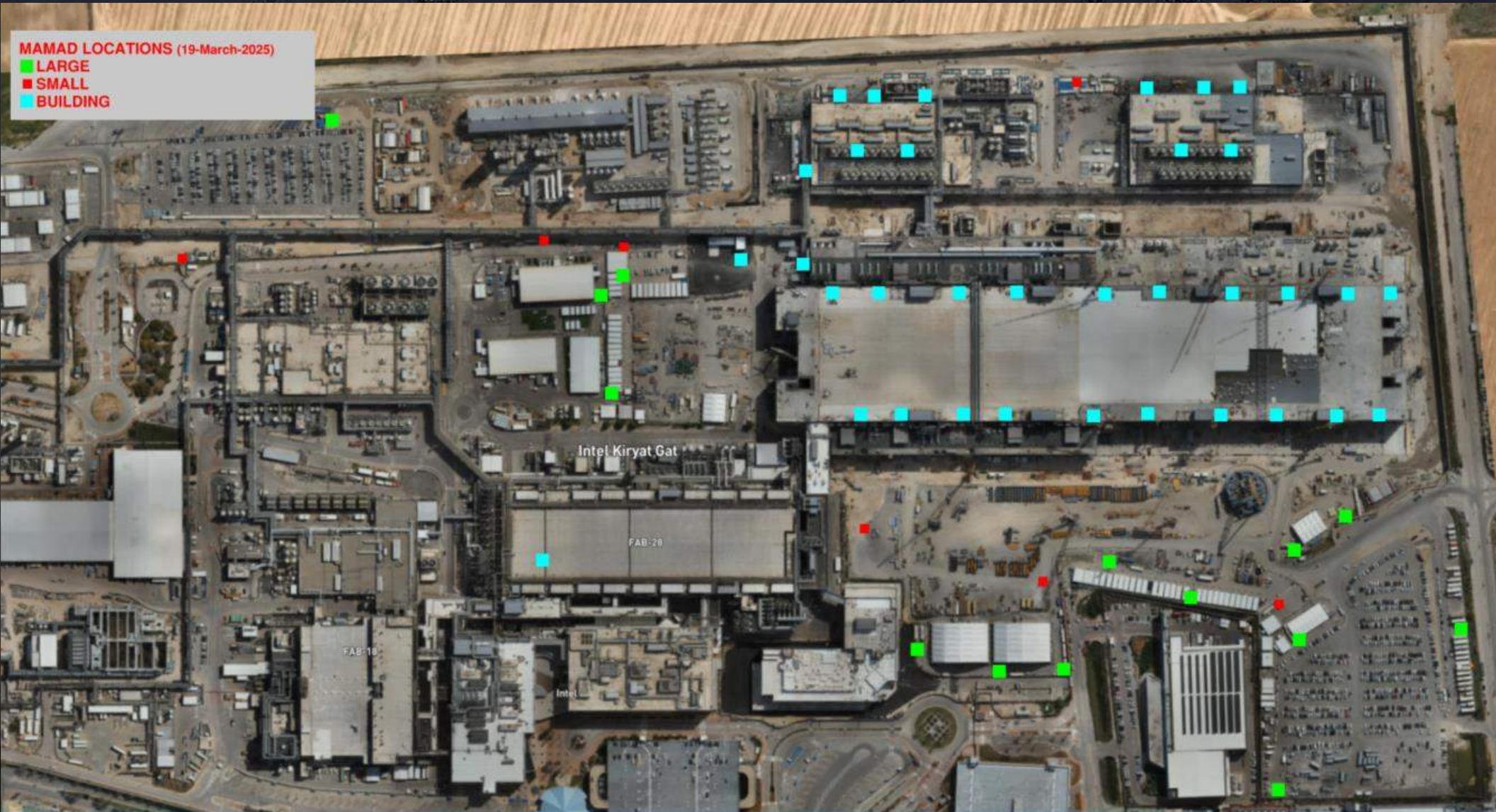


Daily Coordination Meeting

MAMAD Locations

MAMAD LOCATIONS (19-March-2025)

■ LARGE
■ SMALL
■ BUILDING



Area Assessment

When arriving at the work area, before starting any work, a scan and inspection of the area must be carried out to ensure it is free of hazards or dangers. If risks cannot be minimized or eliminated, at least be aware of them.

Here is a list of some topics that need to be checked before starting work:

- Visual inspection of the work area.
- Check for any active or live systems around us.
- Check for any openings or holes in the area, including ensuring the proper covering of openings or holes. If a hazard is found, report it and do not begin working near the hazard.
- Verify approval for all relevant plans and forms for the task (RAMS, fall arrest plan, confined space, hot work, working at height, HRA, and more).

Daily Coordination Meeting



14:00 Sign In