

# Daily Coordination Meeting




14:00 Sign In

# Daily Coordination Meeting

General Topics:

❖ Oct 7 remembrance





Cub 2 zone 8 @ pipe racks  
@ 12:00 am

HFW @ 3:00 am

HFW @ 3:00 am

CUB roof zone 8  
pipe racks @  
12:00 am

FAB-28



LESICO Press test at tub laterals 10/7 start 19:00 finish 5:00

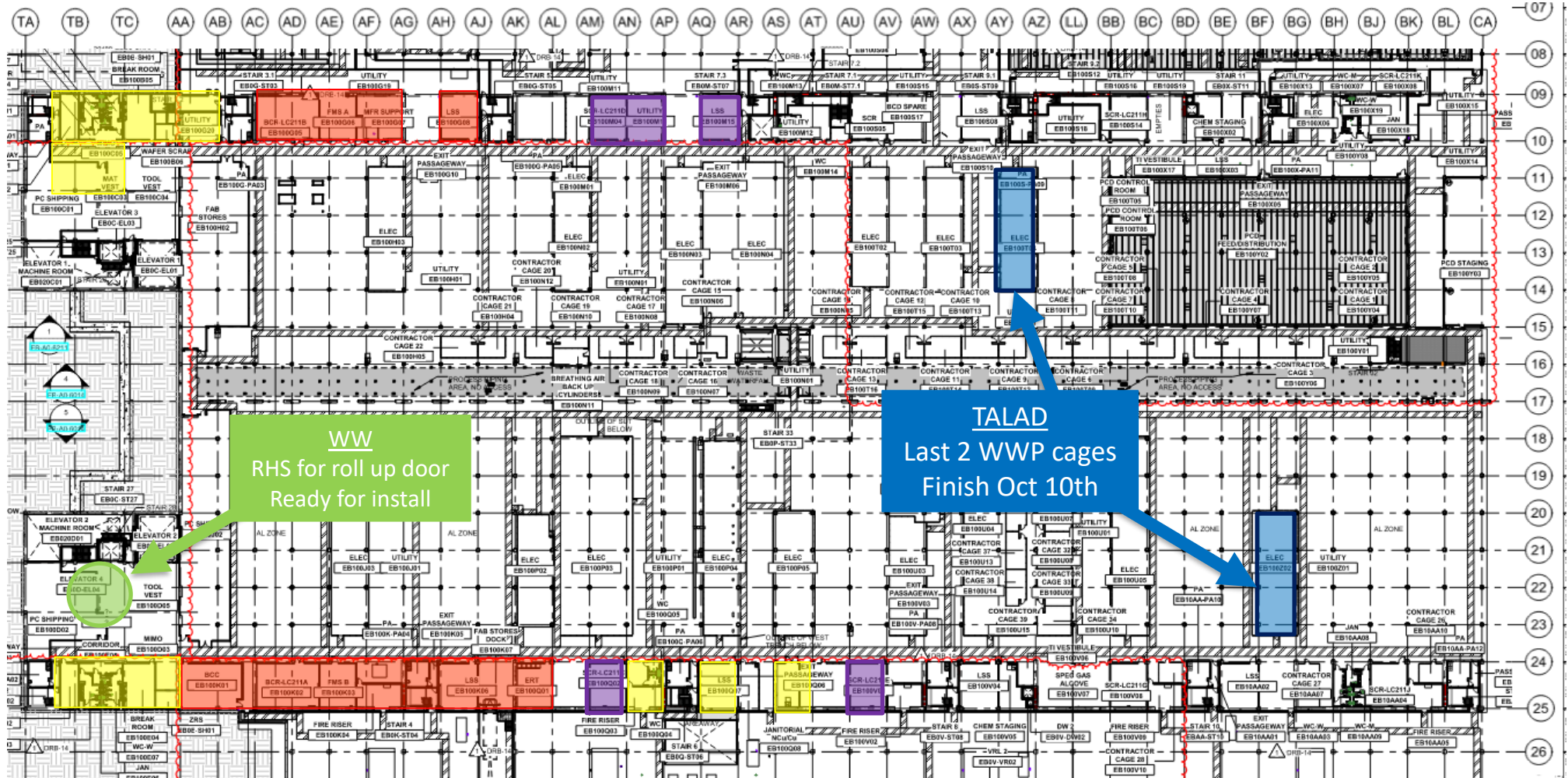
The floor plan includes the following labeled areas:

- Contractor Cage 1 (EB100Y04)
- Contractor Cage 2 (EB100Y05)
- Contractor Cage 3 (EB100Y06)
- Contractor Cage 4 (EB100Y07)
- Contractor Cage 5 (EB100T08)
- Contractor Cage 6 (EB100T09)
- Contractor Cage 7 (EB100T10)
- Contractor Cage 8 (EB100T11)
- PCD Control Room (EB100T05)
- PCD Control Room (EB100T06)
- PCD Feed/Distribution (EB100Y02)
- Exit Passageway (EB100X05)
- Utility (EB100Y01)
- Utility (EB100Y08)
- Utility (EB100Y14)
- Utility (EB100Y15)
- Chem Staging (EB100X02)
- Empty (EB100S14)
- Empty (EB100X03)
- Empty (EB100X06)
- Empty (EB100X18)
- Empty (EB100X19)
- Empty (EB100X17)
- Empty (EB100X14)
- Empty (EB100X15)
- Empty (EB100X16)
- Empty (EB100X17)
- Empty (EB100X18)
- Empty (EB100X19)
- Empty (EB100X20)
- Empty (EB100X21)
- Empty (EB100X22)
- Empty (EB100X23)
- Empty (EB100X24)
- Empty (EB100X25)
- Empty (EB100X26)
- Empty (EB100X27)
- Empty (EB100X28)
- Empty (EB100X29)
- Empty (EB100X30)
- Empty (EB100X31)
- Empty (EB100X32)
- Empty (EB100X33)
- Empty (EB100X34)
- Empty (EB100X35)
- Empty (EB100X36)
- Empty (EB100X37)
- Empty (EB100X38)
- Empty (EB100X39)
- Empty (EB100X40)
- Empty (EB100X41)
- Empty (EB100X42)
- Empty (EB100X43)
- Empty (EB100X44)
- Empty (EB100X45)
- Empty (EB100X46)
- Empty (EB100X47)
- Empty (EB100X48)
- Empty (EB100X49)
- Empty (EB100X50)
- Empty (EB100X51)
- Empty (EB100X52)
- Empty (EB100X53)
- Empty (EB100X54)
- Empty (EB100X55)
- Empty (EB100X56)
- Empty (EB100X57)
- Empty (EB100X58)
- Empty (EB100X59)
- Empty (EB100X60)
- Empty (EB100X61)
- Empty (EB100X62)
- Empty (EB100X63)
- Empty (EB100X64)
- Empty (EB100X65)
- Empty (EB100X66)
- Empty (EB100X67)
- Empty (EB100X68)
- Empty (EB100X69)
- Empty (EB100X70)
- Empty (EB100X71)
- Empty (EB100X72)
- Empty (EB100X73)
- Empty (EB100X74)
- Empty (EB100X75)
- Empty (EB100X76)
- Empty (EB100X77)
- Empty (EB100X78)
- Empty (EB100X79)
- Empty (EB100X80)
- Empty (EB100X81)
- Empty (EB100X82)
- Empty (EB100X83)
- Empty (EB100X84)
- Empty (EB100X85)
- Empty (EB100X86)
- Empty (EB100X87)
- Empty (EB100X88)
- Empty (EB100X89)
- Empty (EB100X90)
- Empty (EB100X91)
- Empty (EB100X92)
- Empty (EB100X93)
- Empty (EB100X94)
- Empty (EB100X95)
- Empty (EB100X96)
- Empty (EB100X97)
- Empty (EB100X98)
- Empty (EB100X99)
- Empty (EB100X100)





## UTILITY LEVEL MOD1



**BELFOR**  
Mold remediation

**ELRAM**  
Drywall install

**MEP+Electrical**  
Ready for re-install



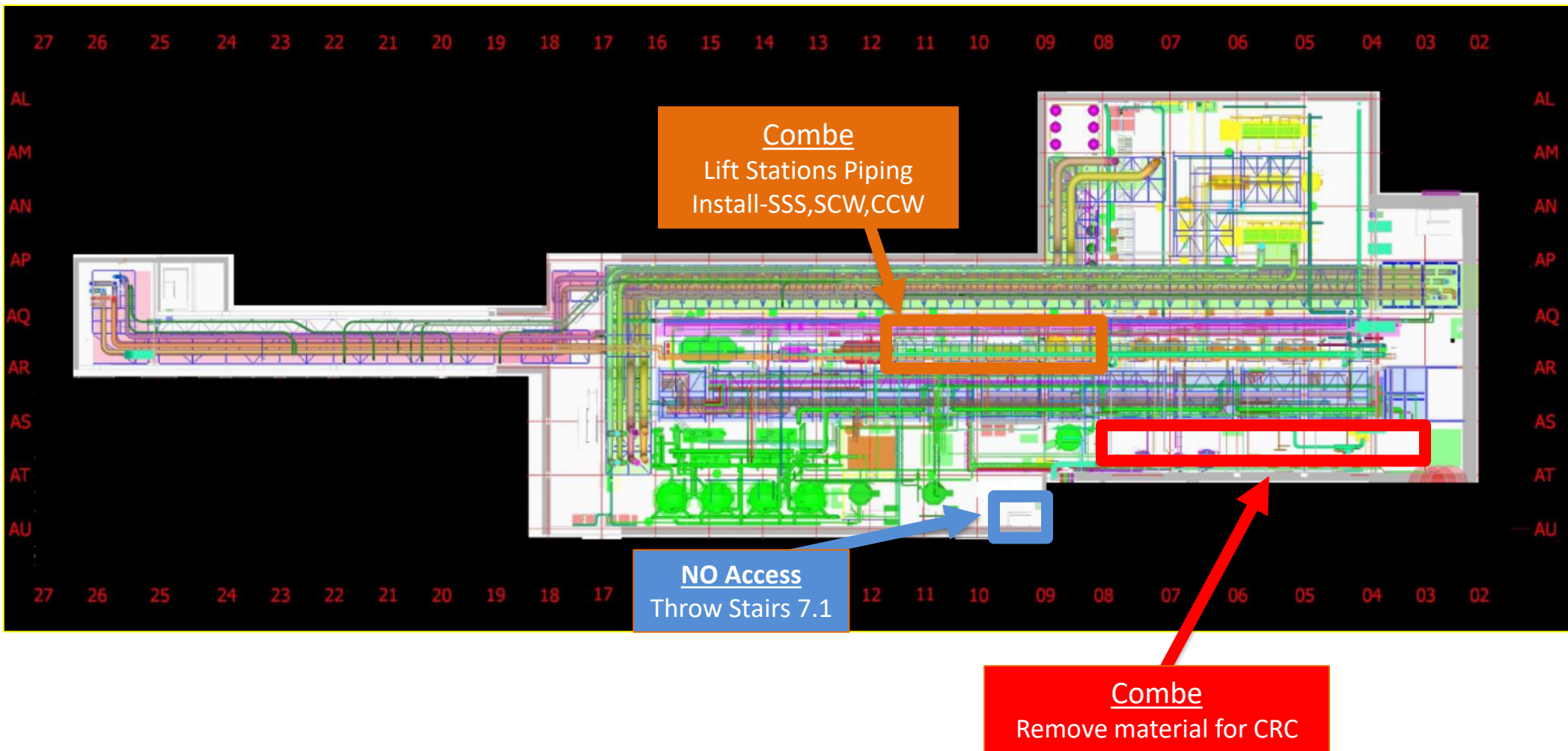
**MALHIMIM**  
8E  
Sprinklers install  
Finish 10/10

MALHIMIM  
8E  
Sprinklers install  
Finish 10/10

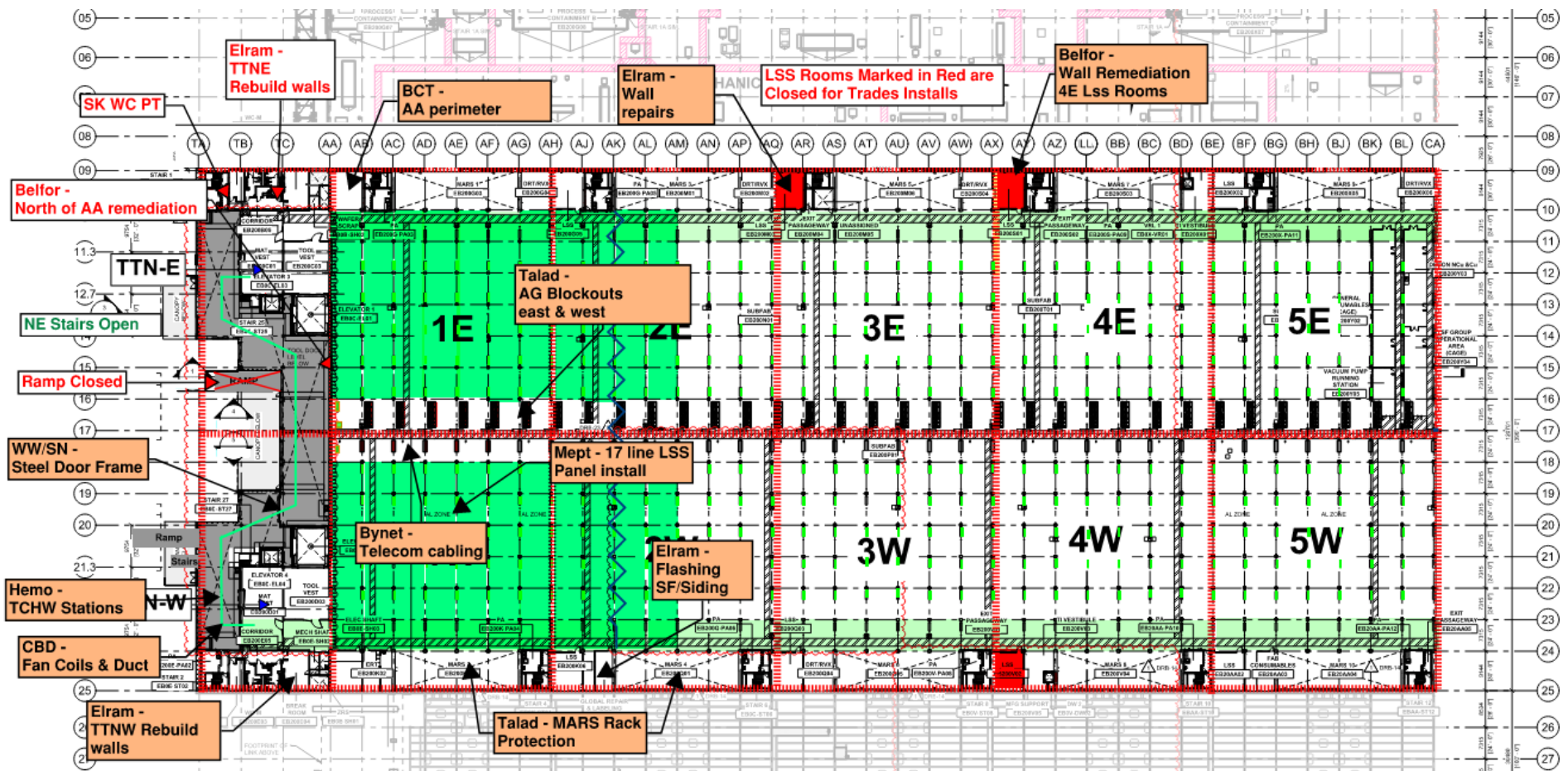




# SUT 38.1 LEVEL

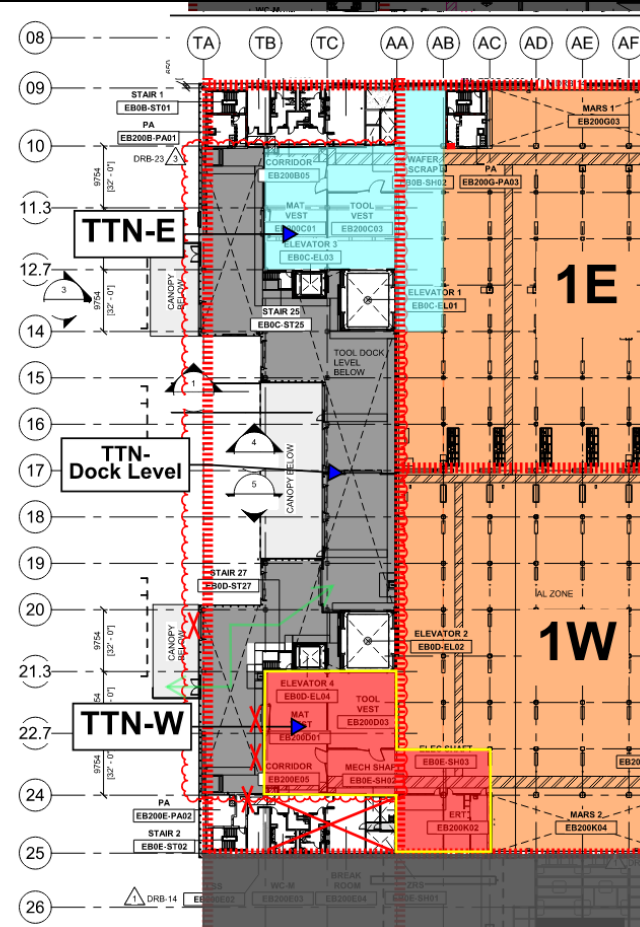


# SUBFAB BUILDOUT MOD 1

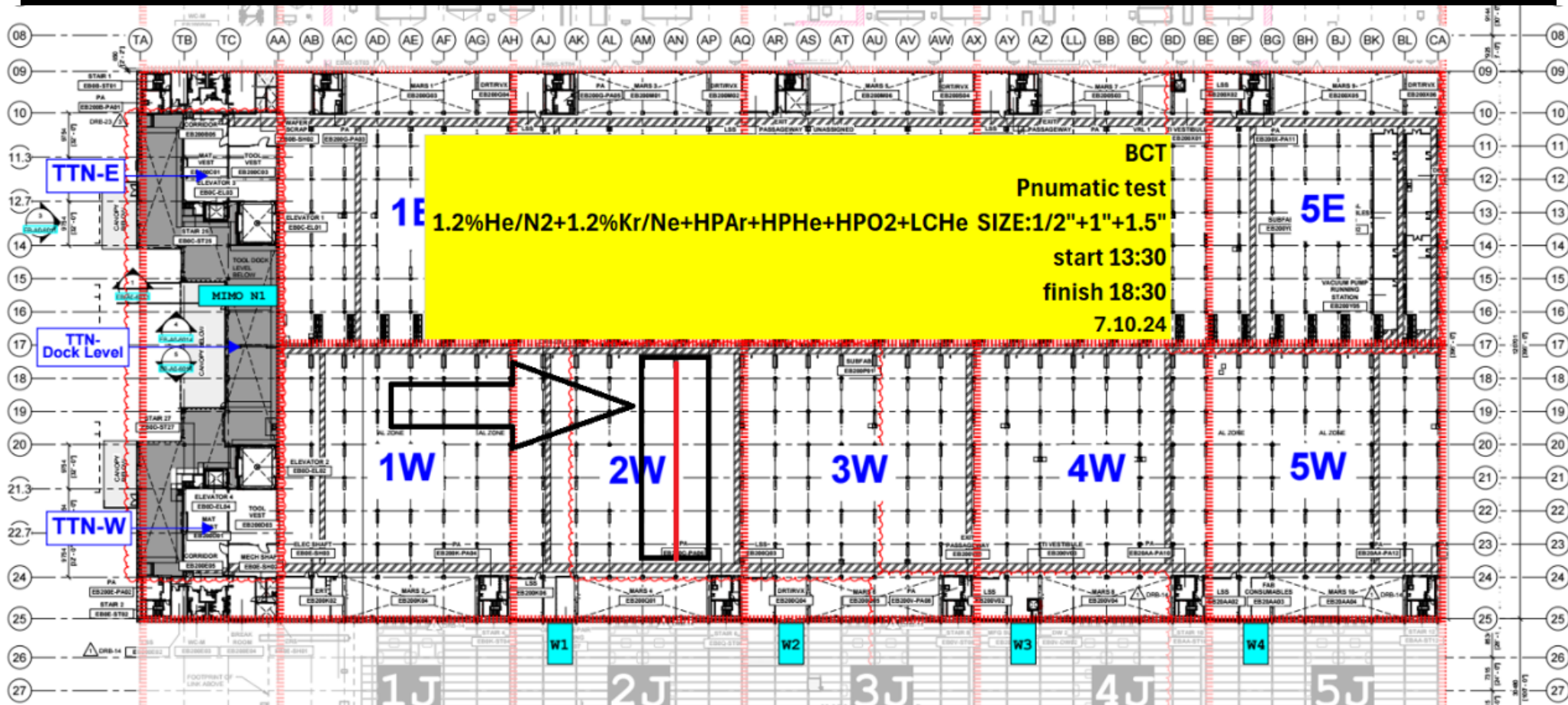




SUBFAB CRC TOPCOAT

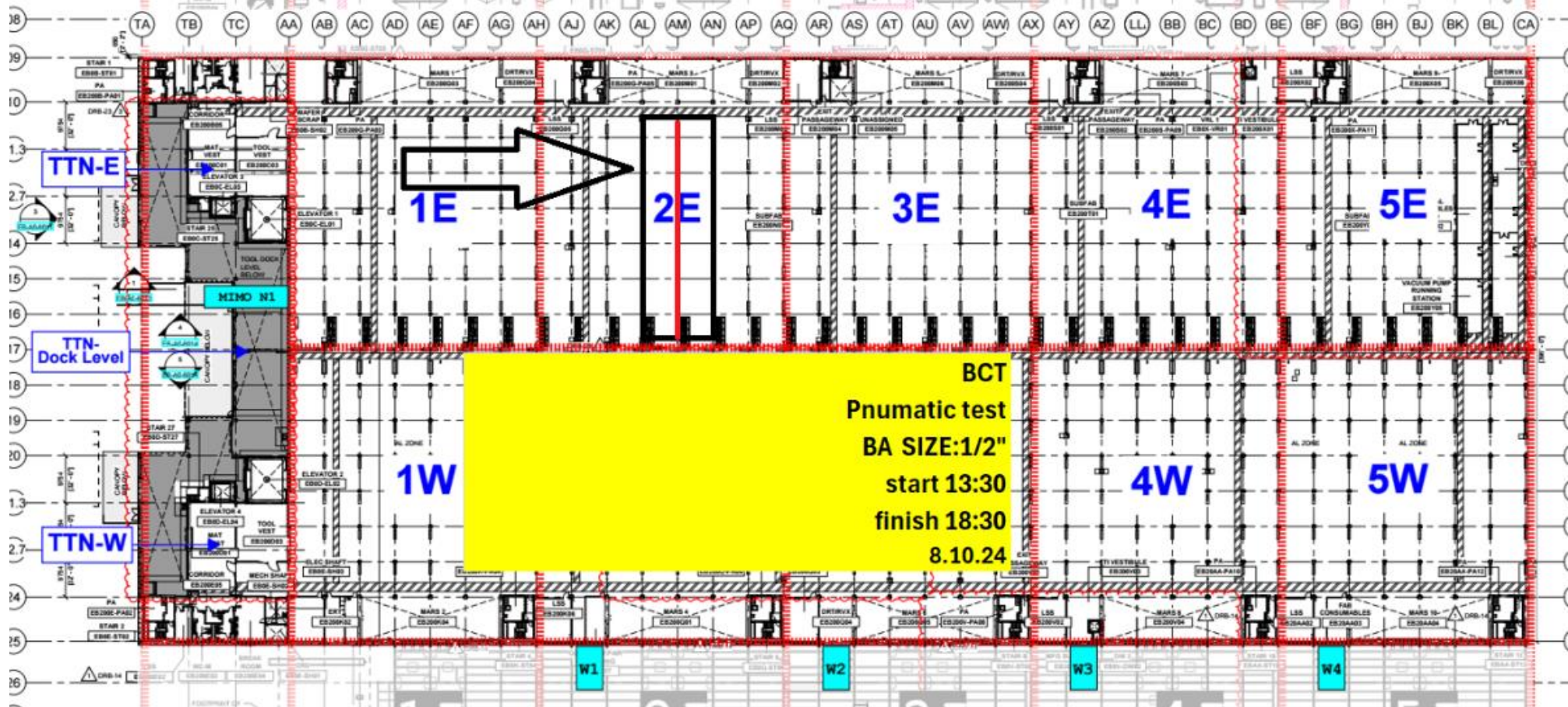


# BCT Pressure Test Exclusion Zone



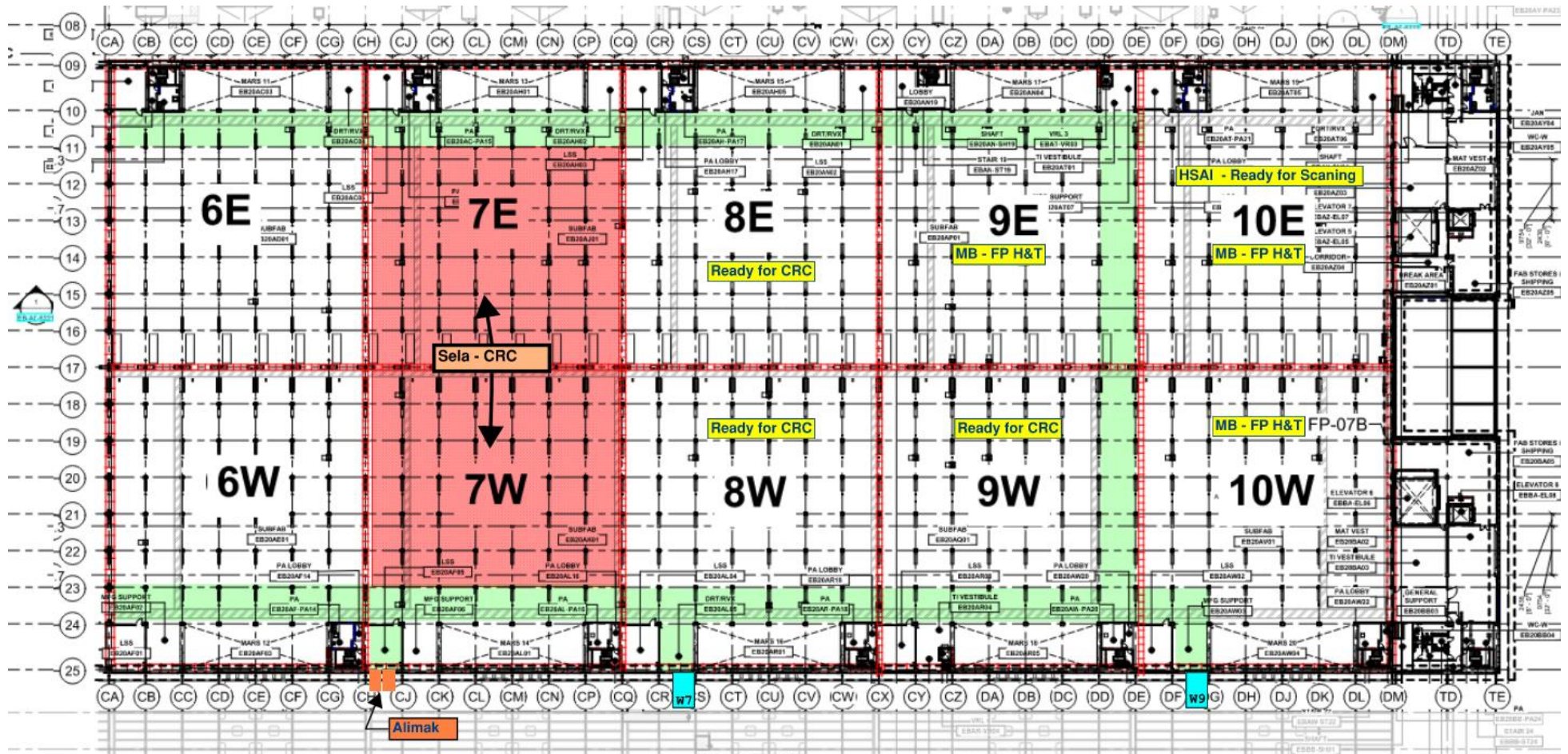


# BCT Pressure Test Exclusion Zone





# SUBFAB BUILDOUT MOD 2





Clean room

protocols apply!!

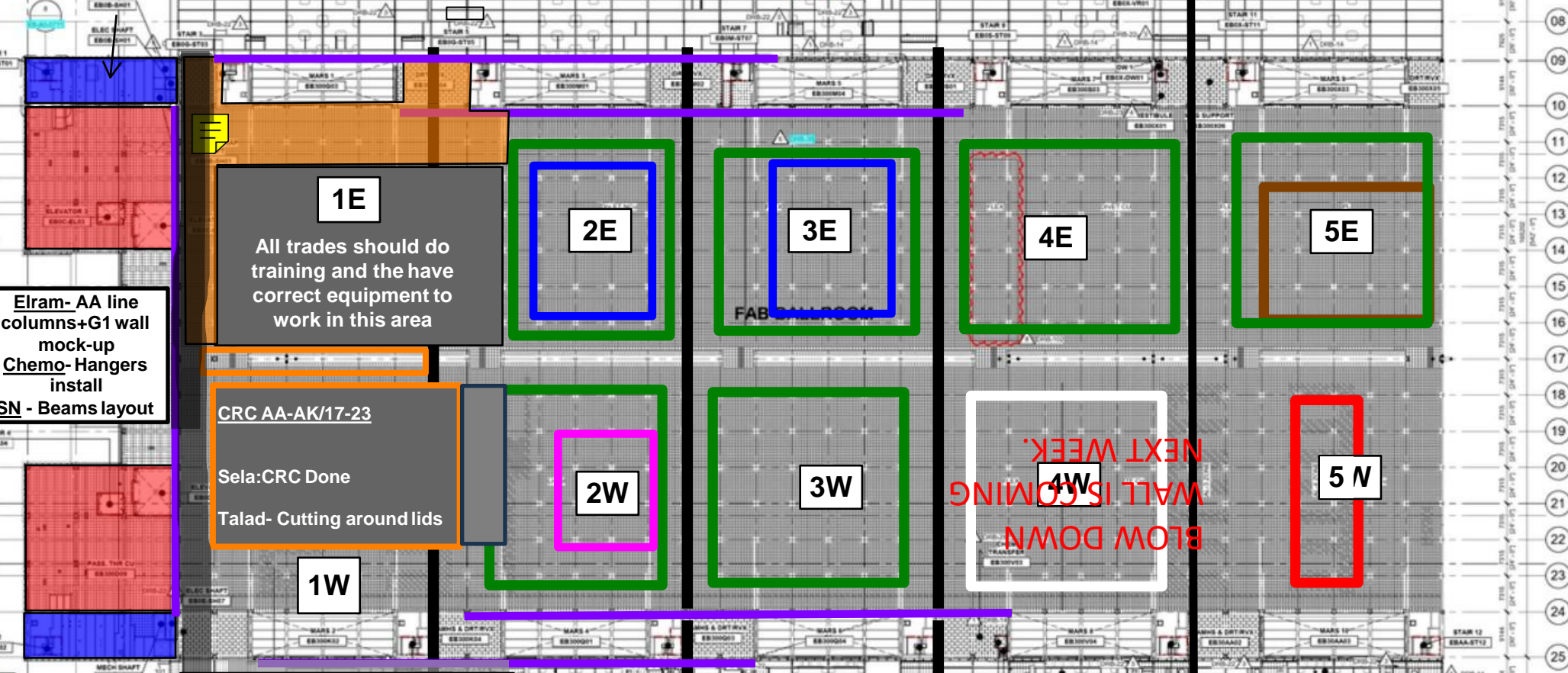
1. only electrical booms & scissors.

2. Booties for all wheels is a must.

sella crc 1E zone.

All subs working over head must protect 4da working areas with protective sheets to prevent plaster waste or any other waste from falling down on fresh crc coat.

ELRAM TA 9+10+24



Elram- AA line  
columns+G1 wall  
mock-up  
Chemo- Hangers  
install  
SN - Beams layout

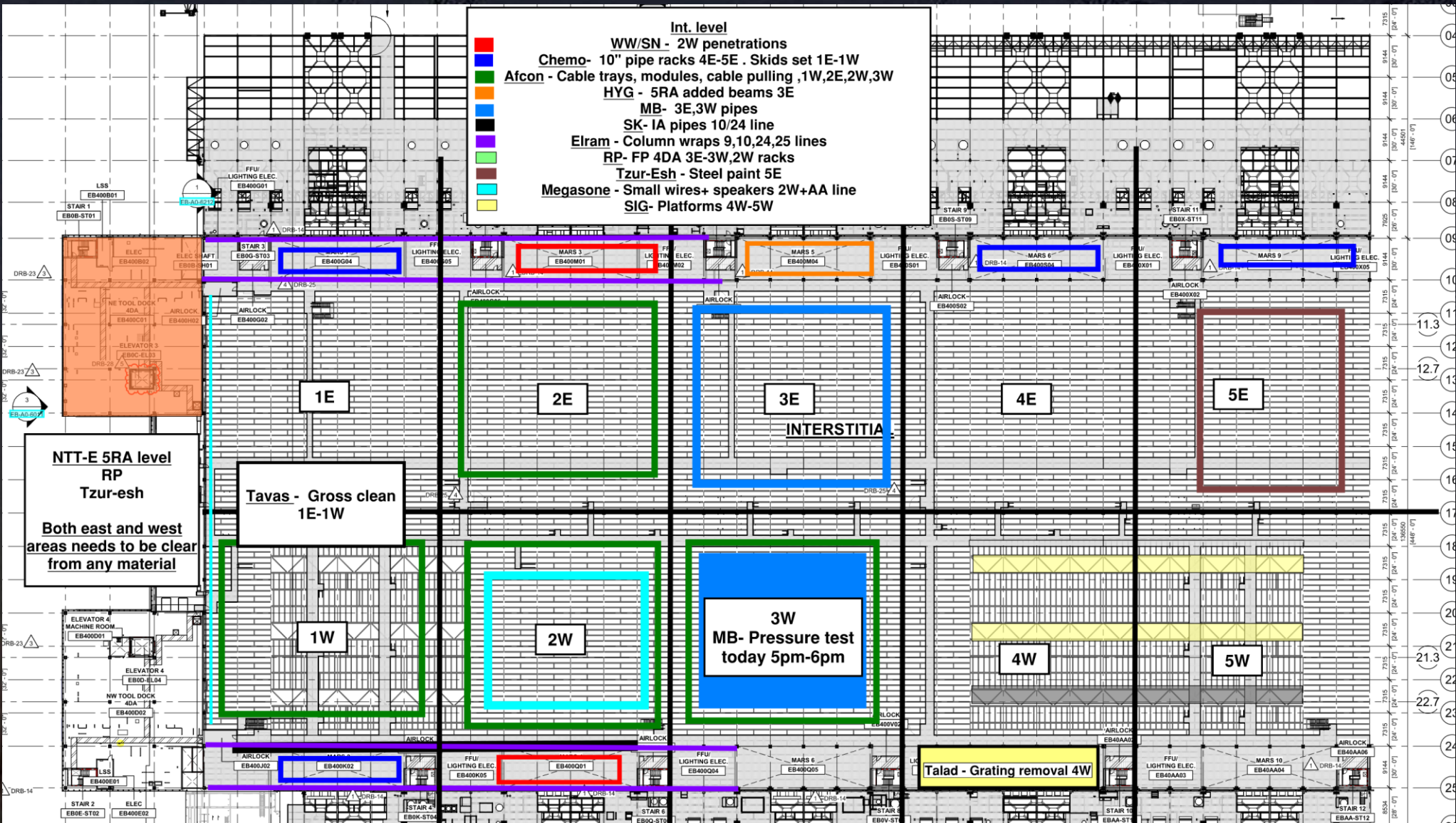
**1E**  
All trades should do  
training and the have  
correct equipment to  
work in this area

**CRC AA-AK/17-23**  
Sela: CRC Done  
Talad- Cutting around lids

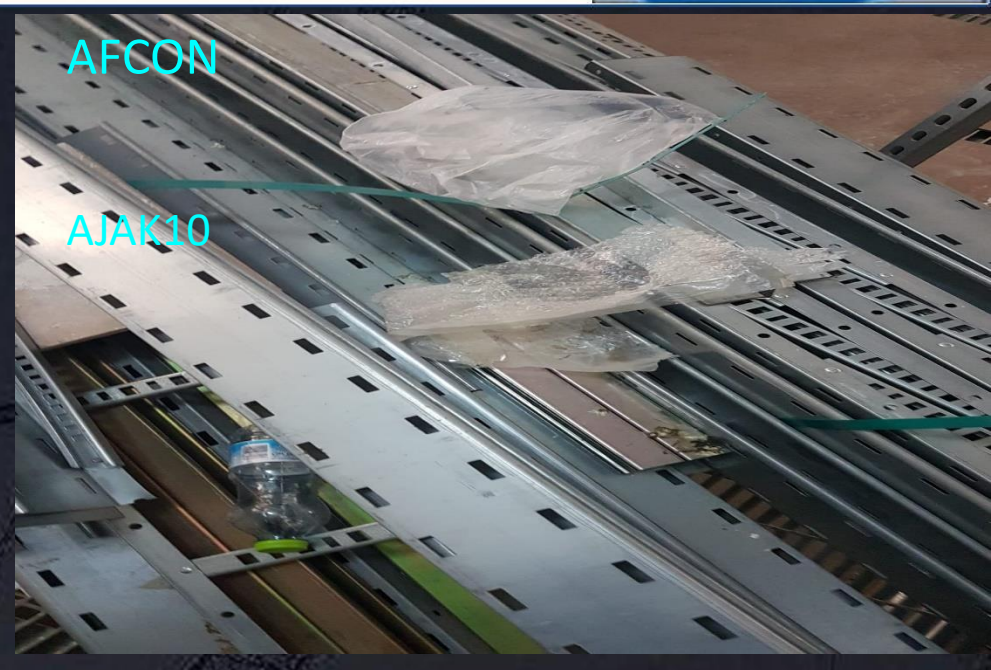
**Chemo aharon**

Link  
**SIG - Mobile scaffold installment**  
**Afcon- Rack install.**  
**Newcotech-BLOWDOWN TEMP WALL**  
**Pach-tas - exsfm15 duct installment**

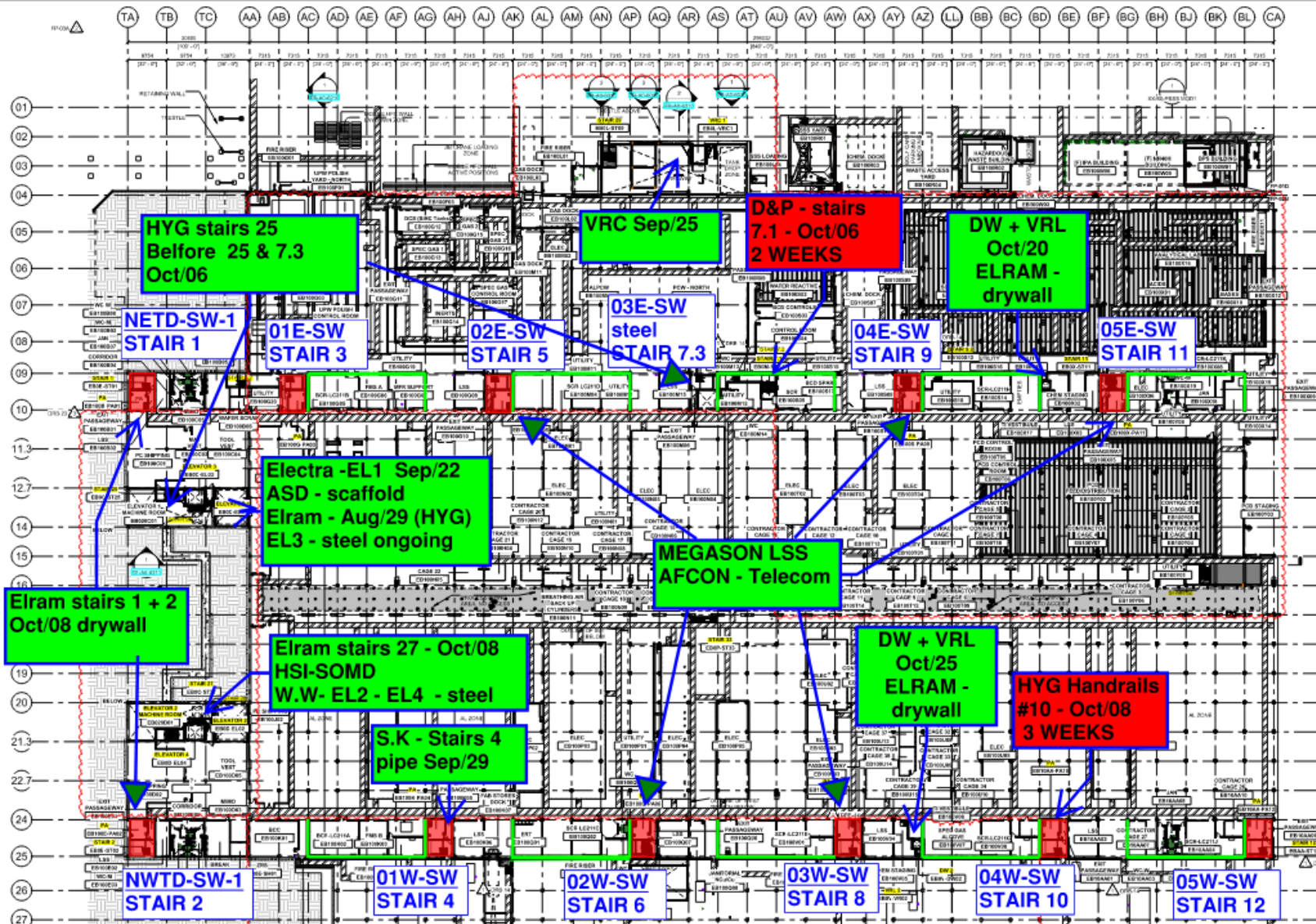
BLOWDOWN WALL  
IS COMING NEXT WEEK.



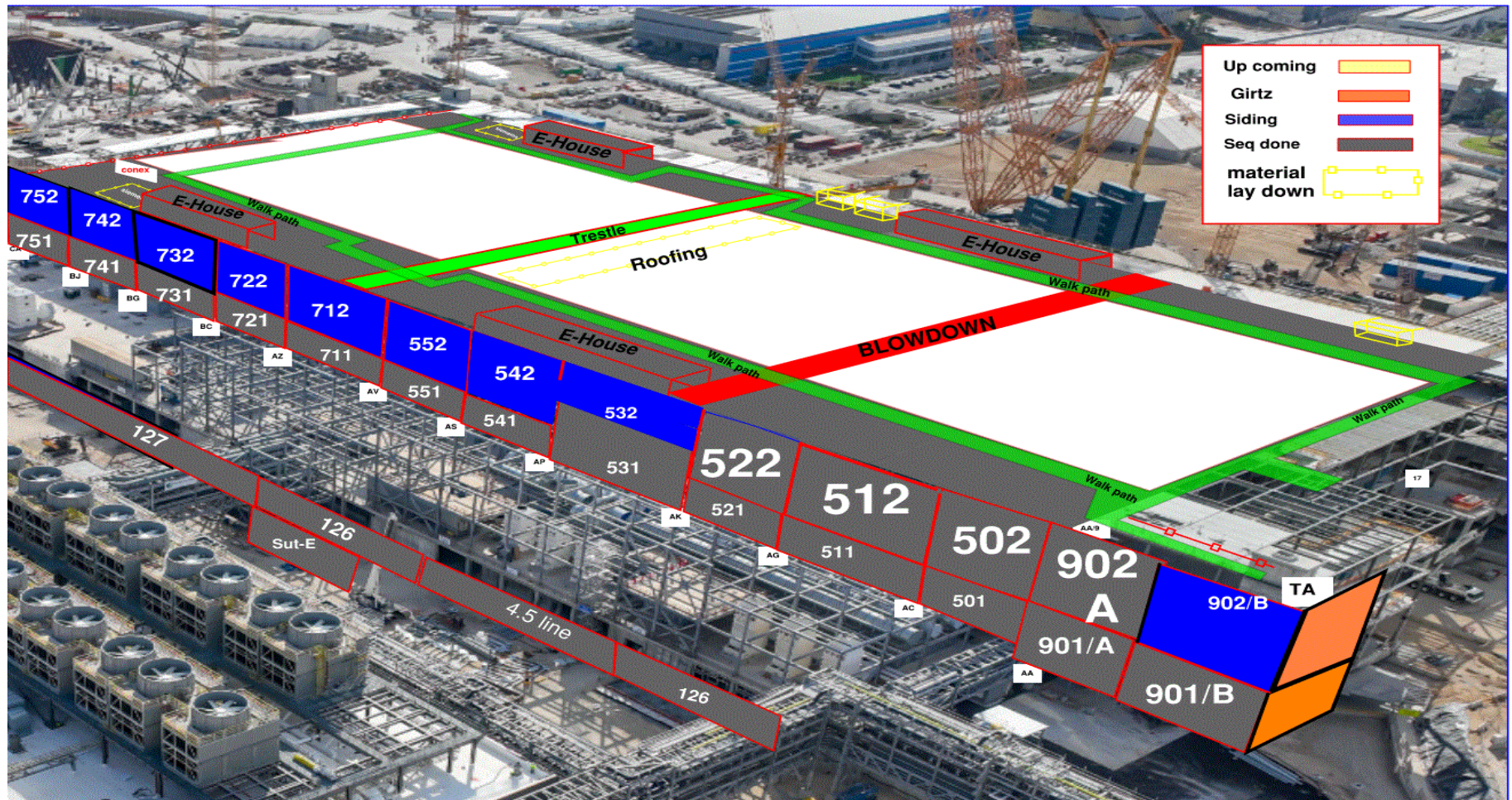




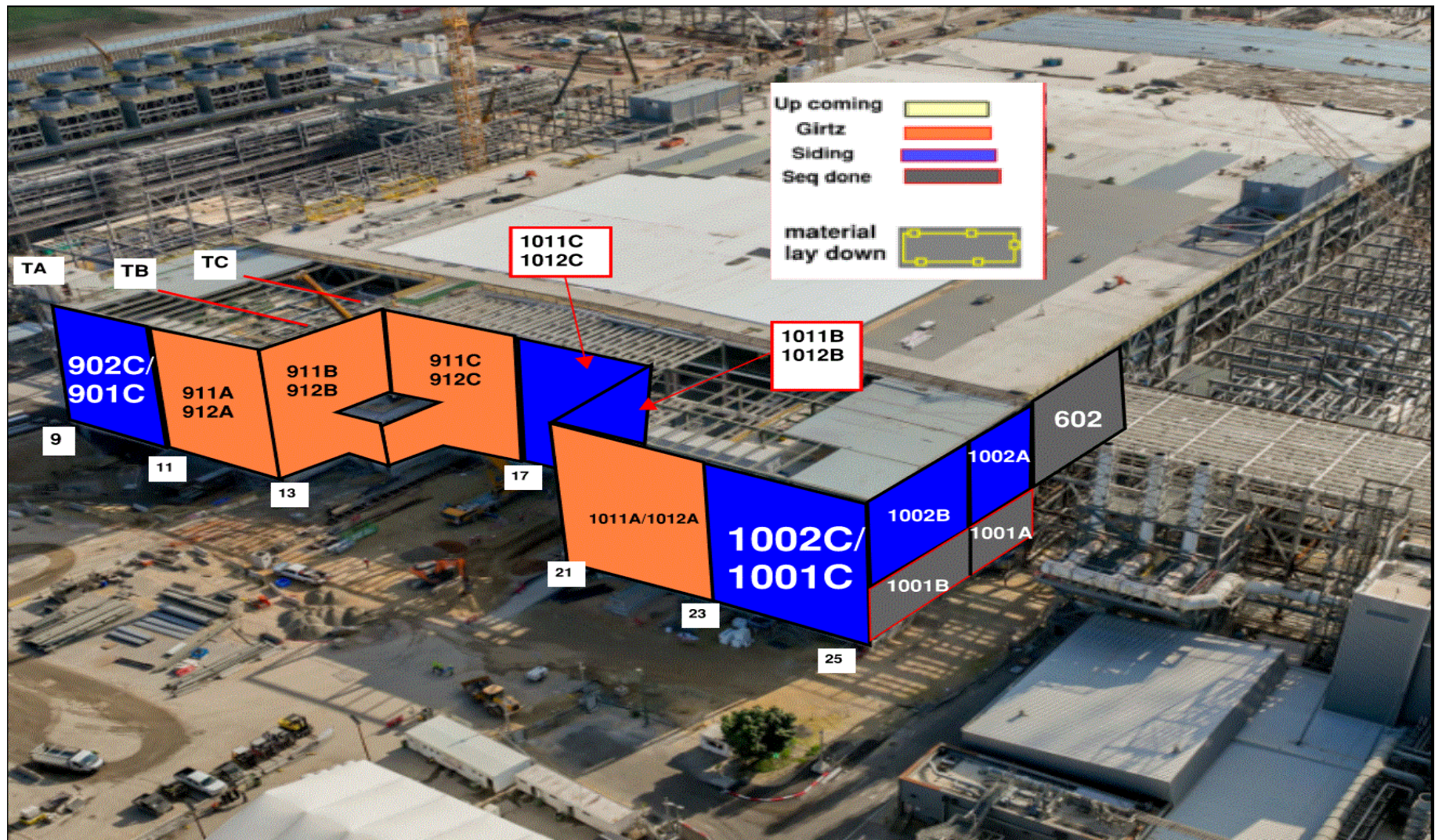




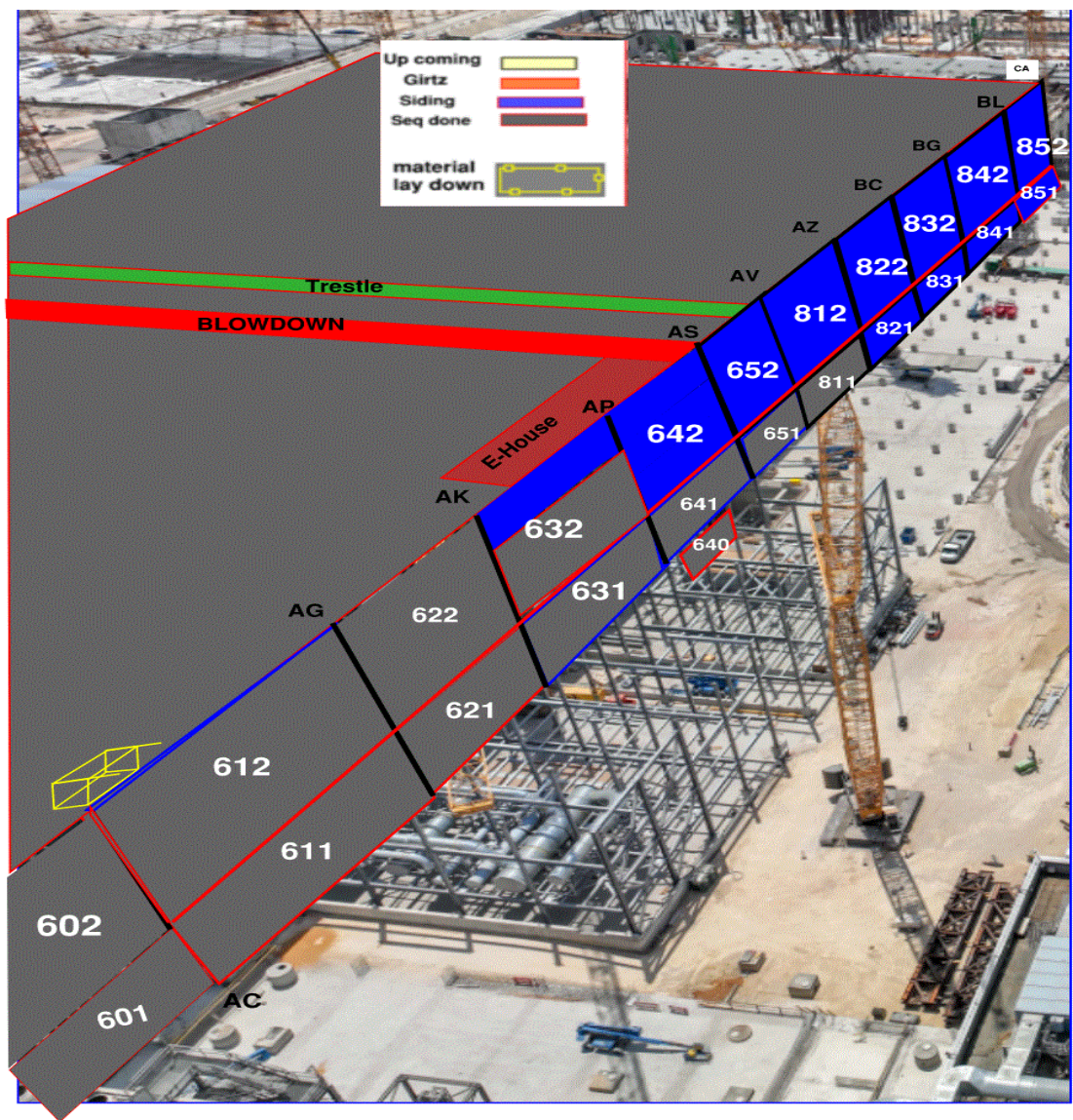












Siding - East FAB - PSSS

DEMO

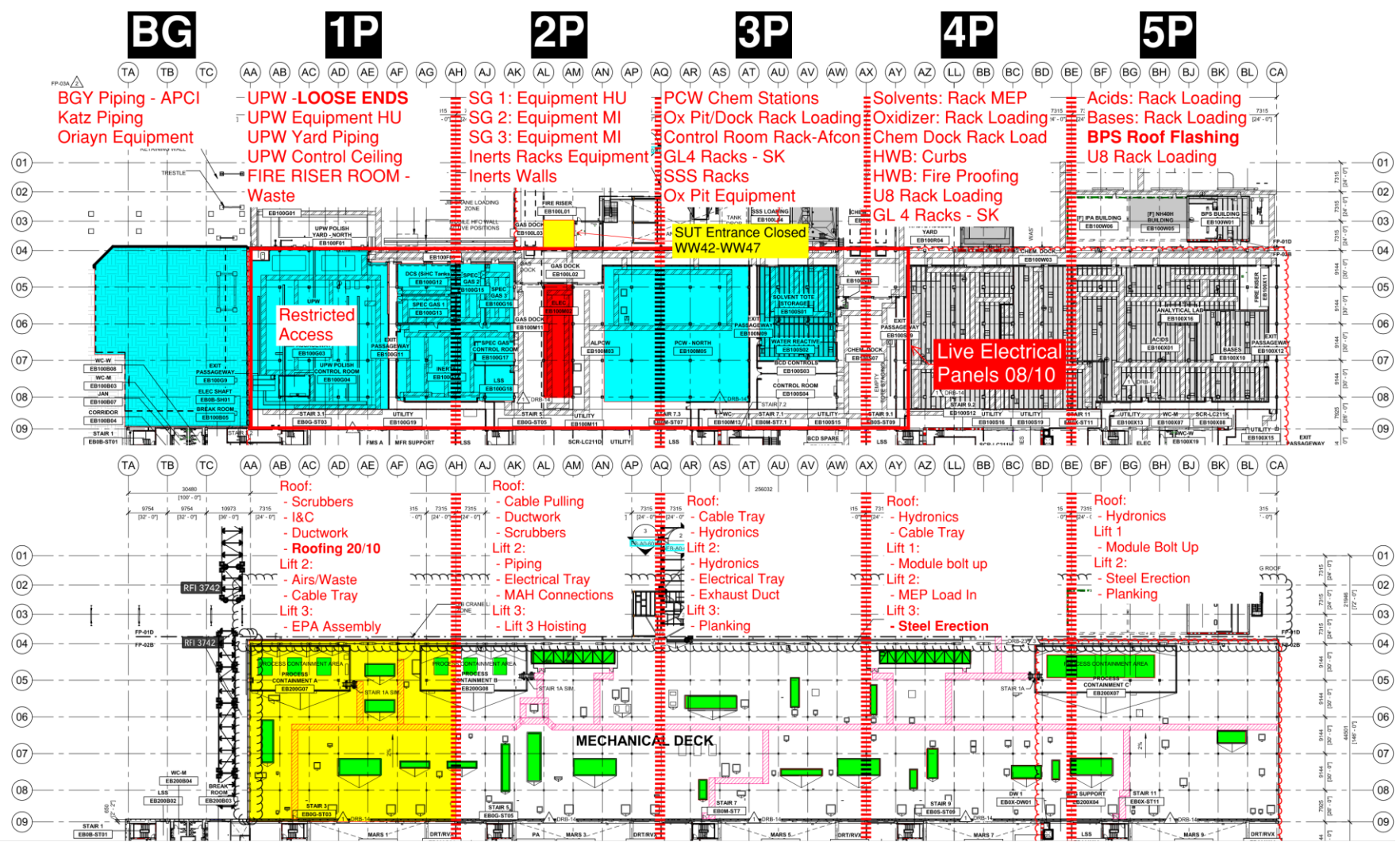


Siding - West FAB - JYG

## Link

1  
2  
3  
4  
5

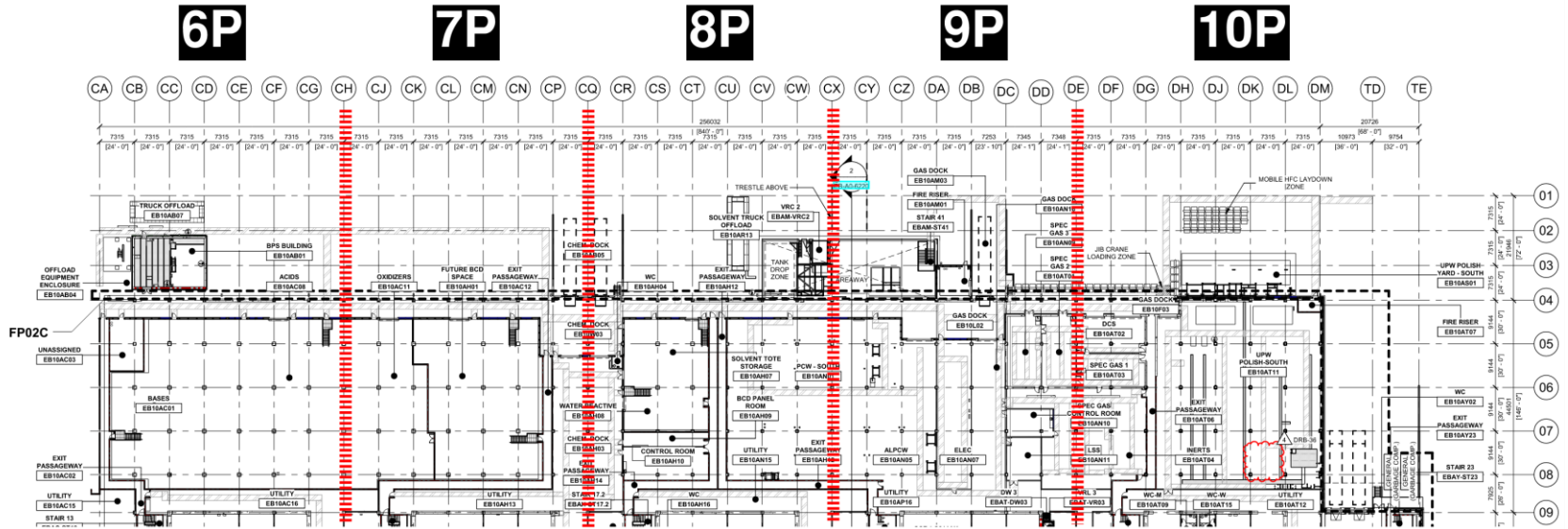
# PSSS.1



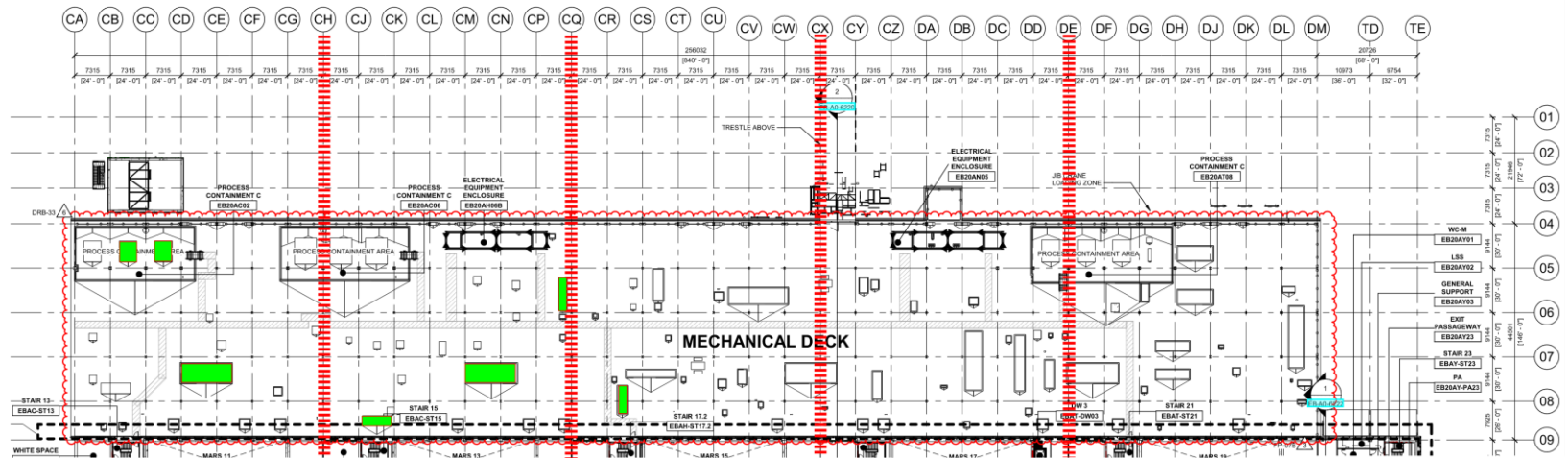


# PSSS.2

## Utility Level 1YA



# PSSS Roof 2SA



# 3P Plenum Delivery and Storage 07/10







## WJG 01J, 02J LIFT 2 & 3







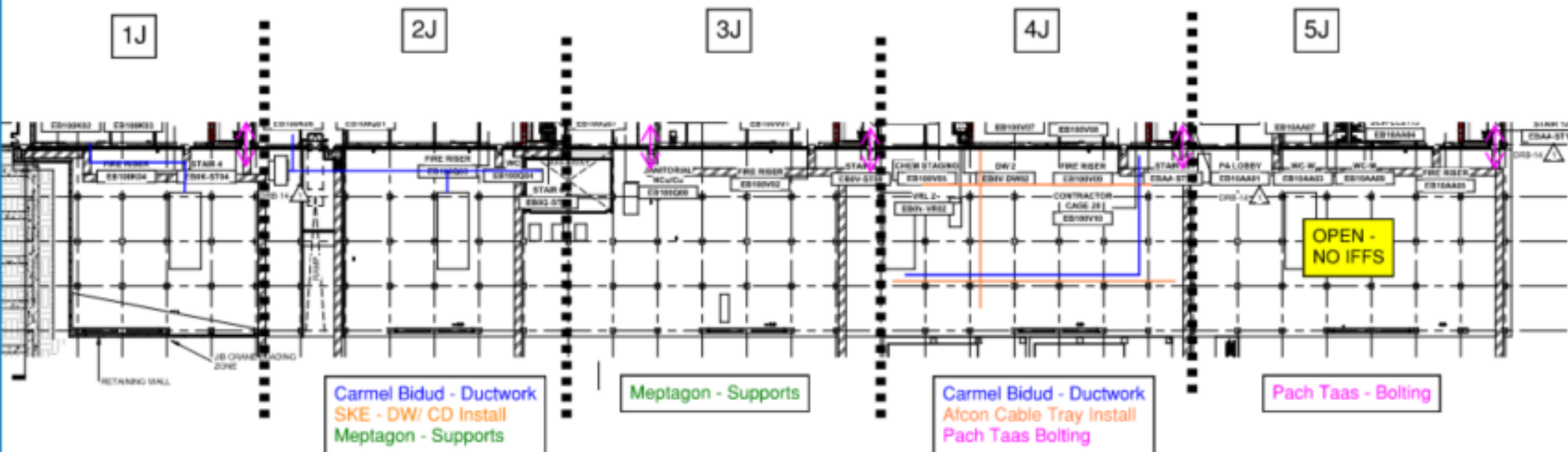
# WJG 03J, 04J, 05J LIFT 2 & 3



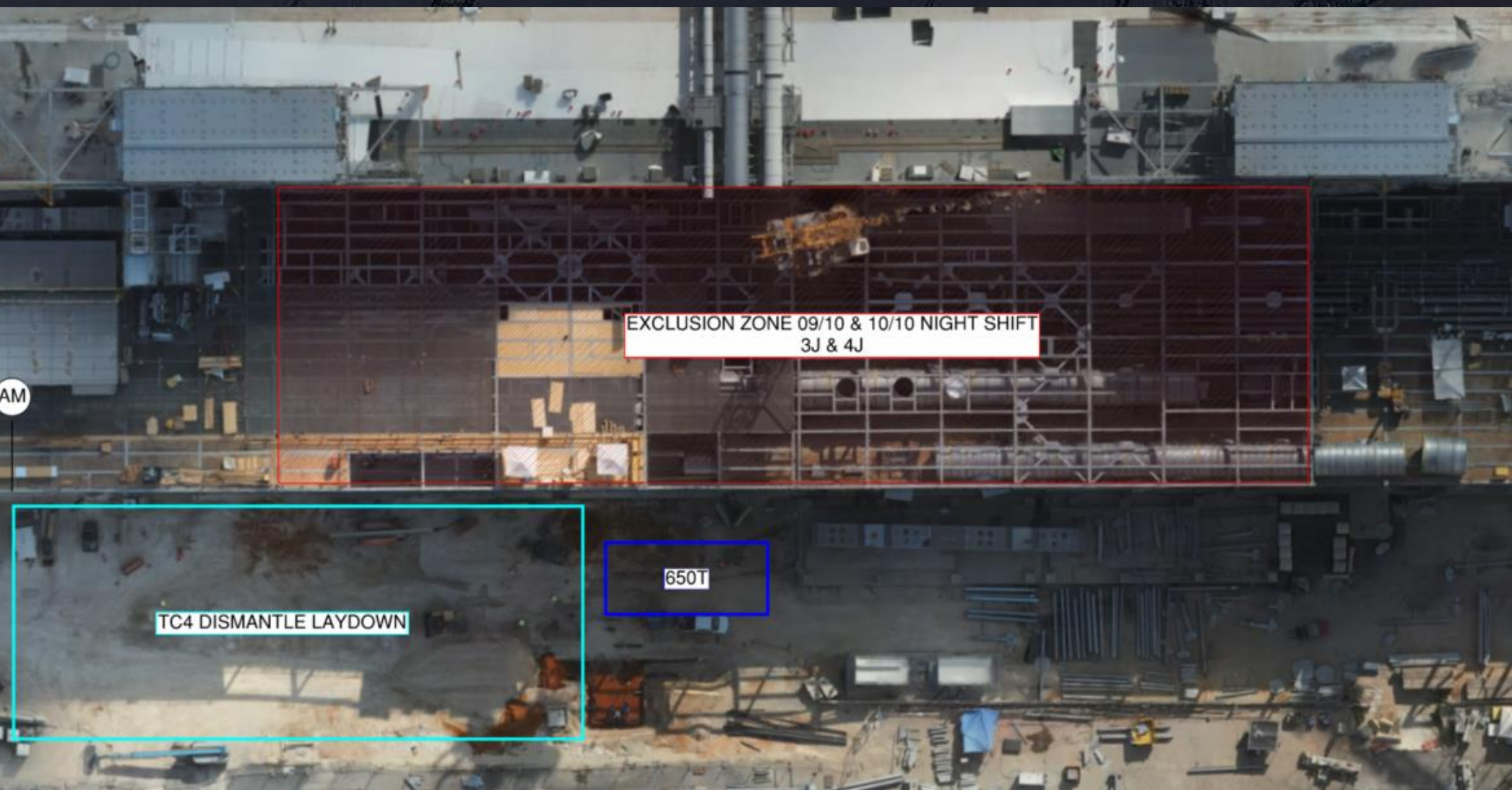




# WJG UTILITY LEVEL BUILD OUT

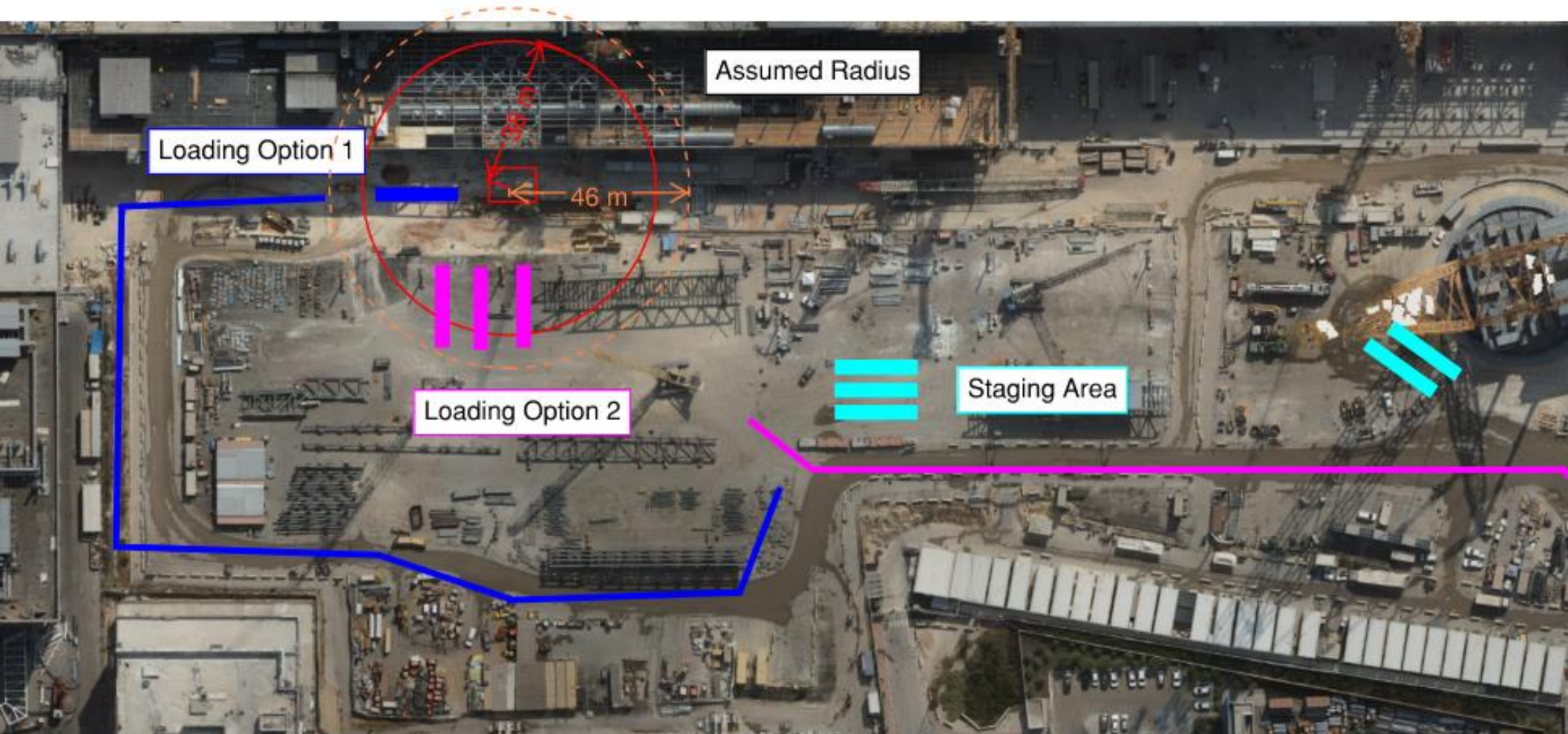


# TC4 Dismantle Exclusion Zones





# TC4 Dismantle Logistics



## Truck Staging:

Dependent on Box Build and W&W Permission - Park Empty Trucks in Truss Yard. Other Options: In Sarens Area, or Outside Gate A (limit 2)

## Truck Routing:

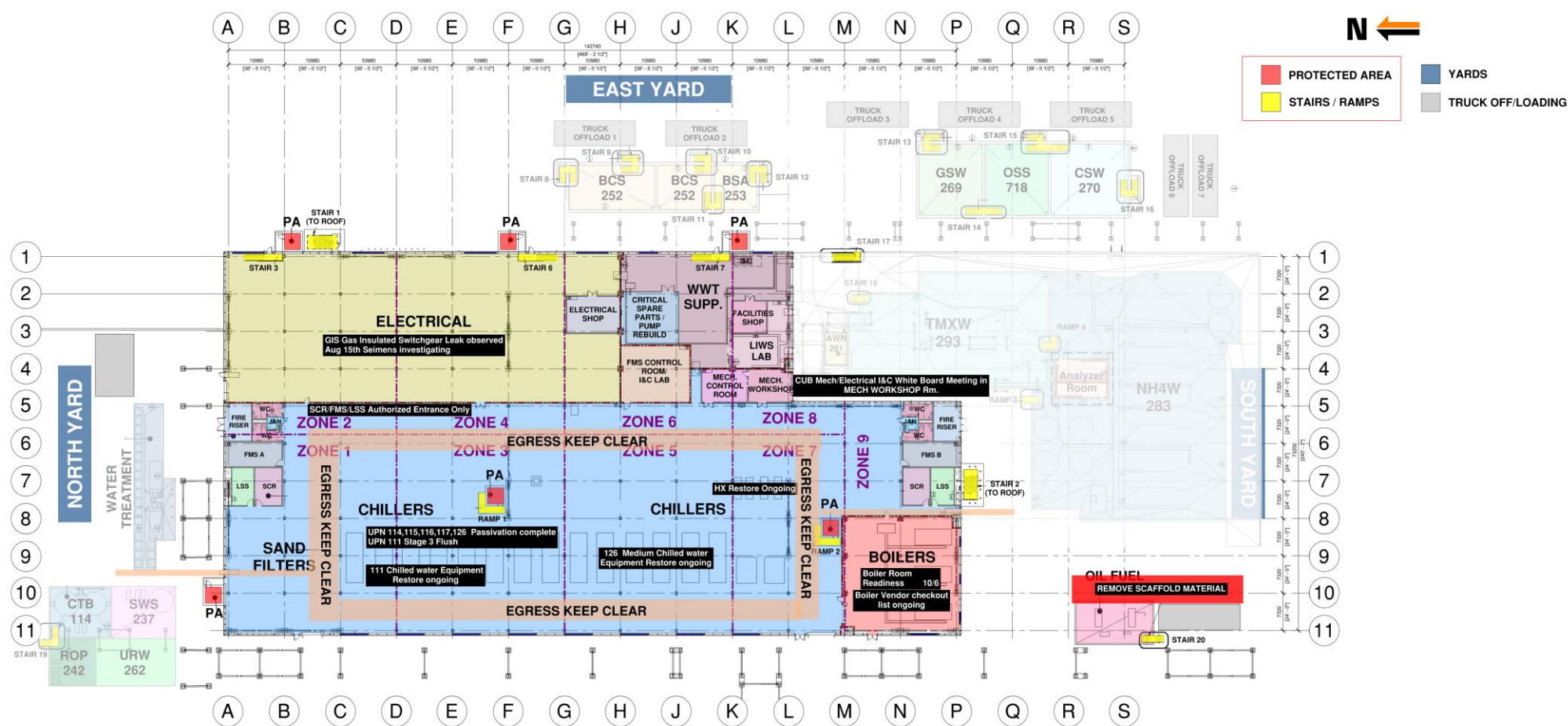
Option 1: Trailer north of crane, limit 1 truck only

Option 2: (Pending Box Build and W&W Permission) Stage 1-3 Trucks within 46m Radius



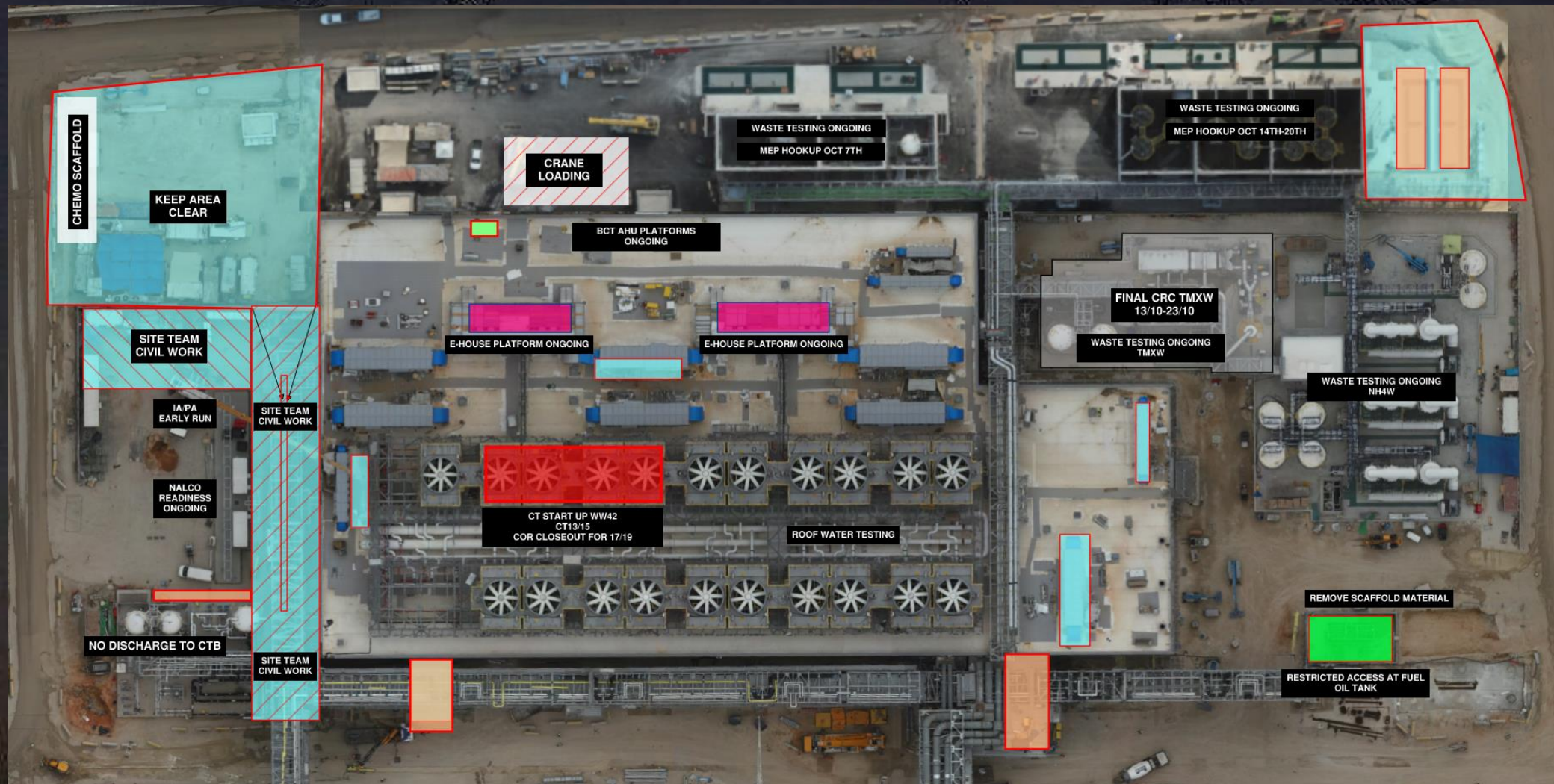
## CUB 1 COORDINATION MAP

**UPDATED** \_\_ / \_\_ / \_\_





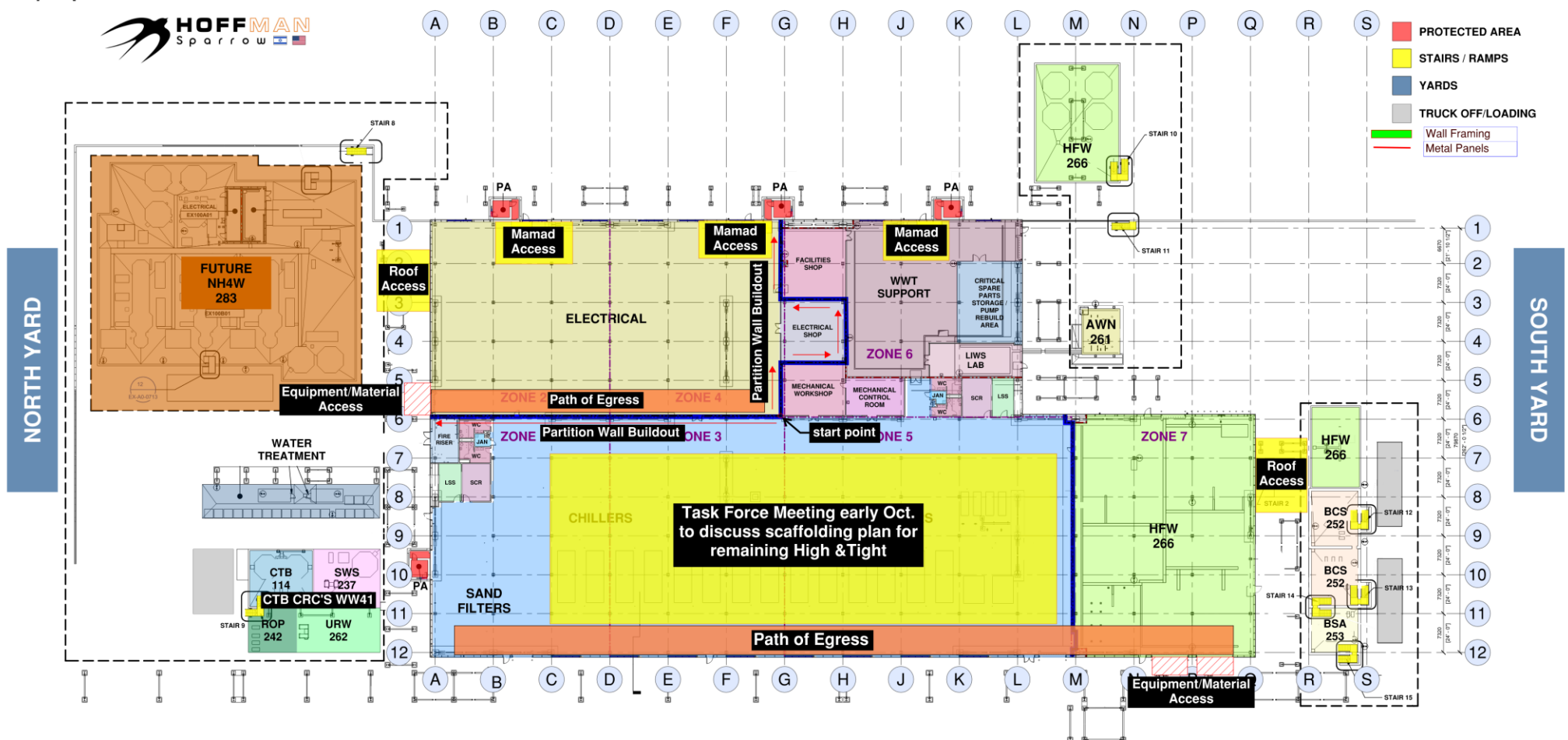
# CUB 1 – EXTERIOR/ROOF





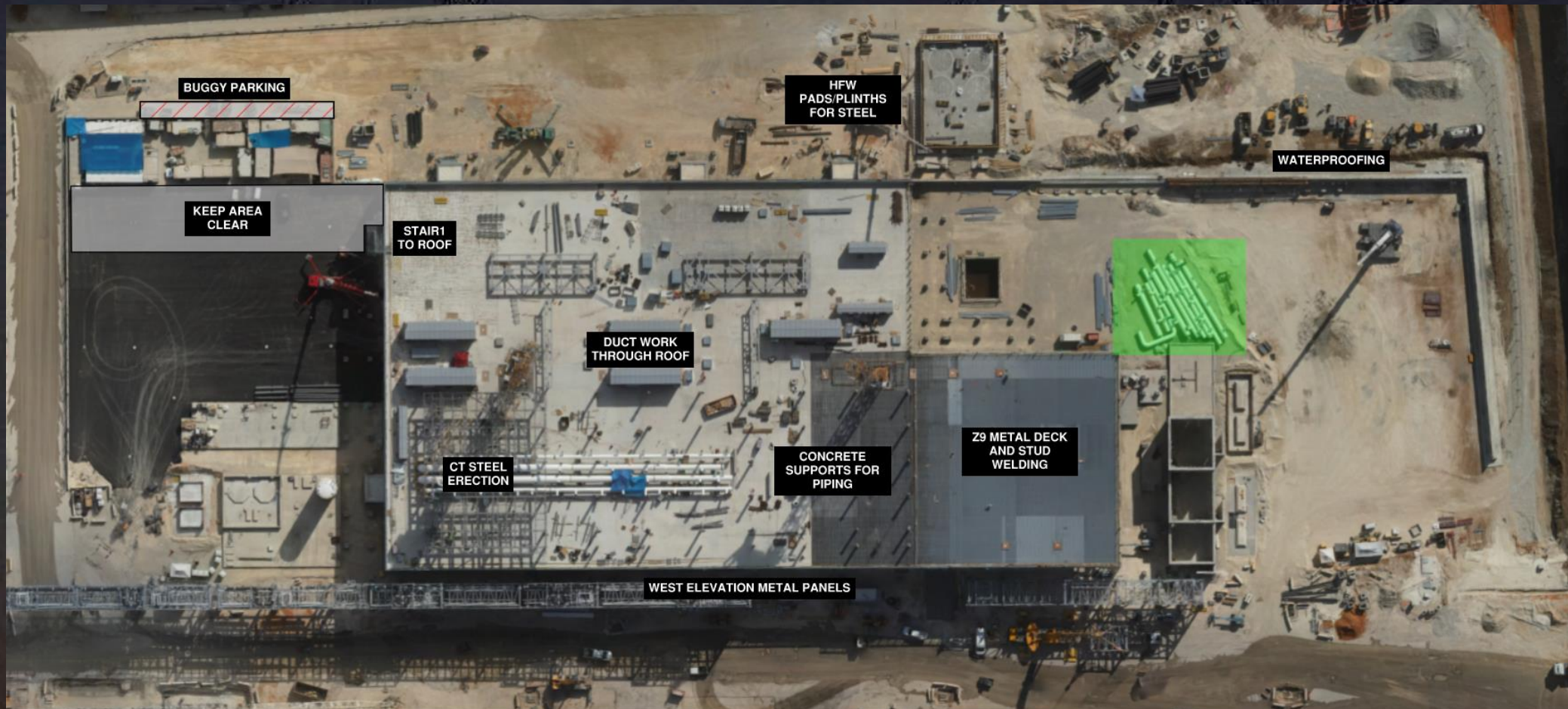
# CUB 2

## CUB 2 COORDINATION MAP





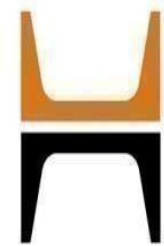
# CUB 2 – EXTERIOR/ROOF











**HOFFMAN CONSTRUCTION COMPANY**



**HOFFMAN**  
Sparrow  

## T19 -ERECTION SEQUENCE

07/OCT

06/OCT

30/sep

29/sept

25-26/sept

23-24/sept

22/sep



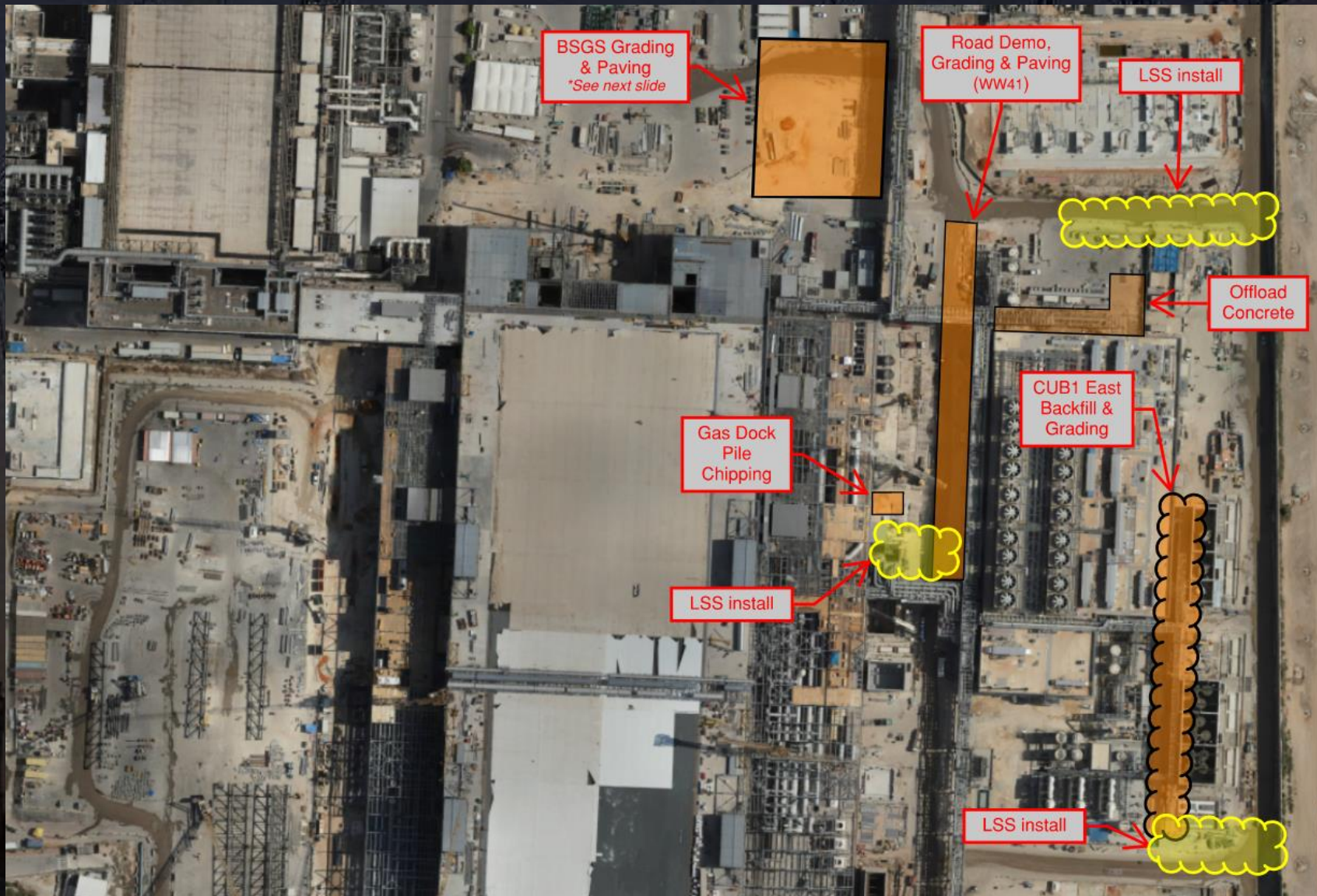




# Daily Coordination Meeting

## Site Logistics

### North

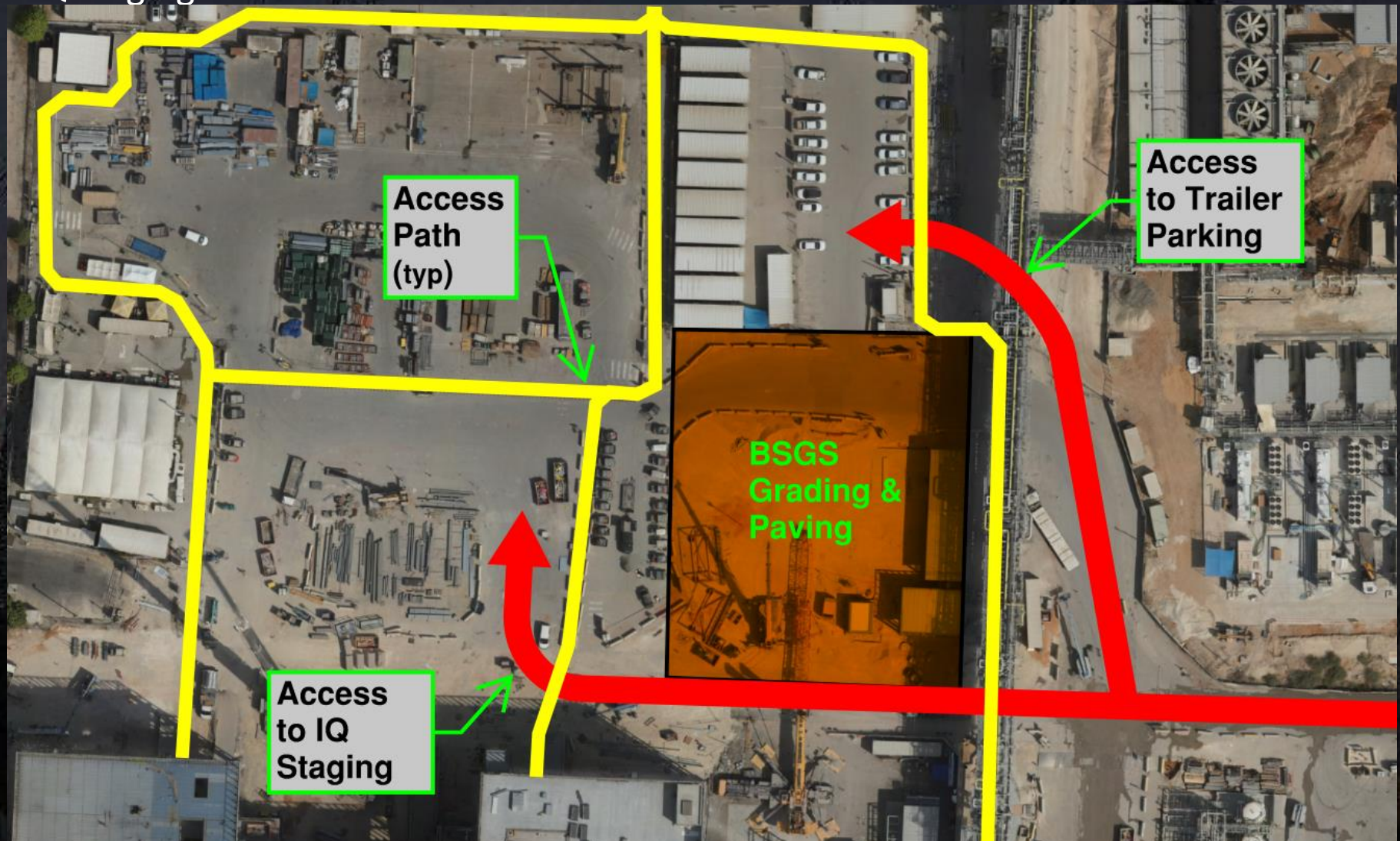




# Daily Coordination Meeting

Site Logistics

North IQ Staging Access







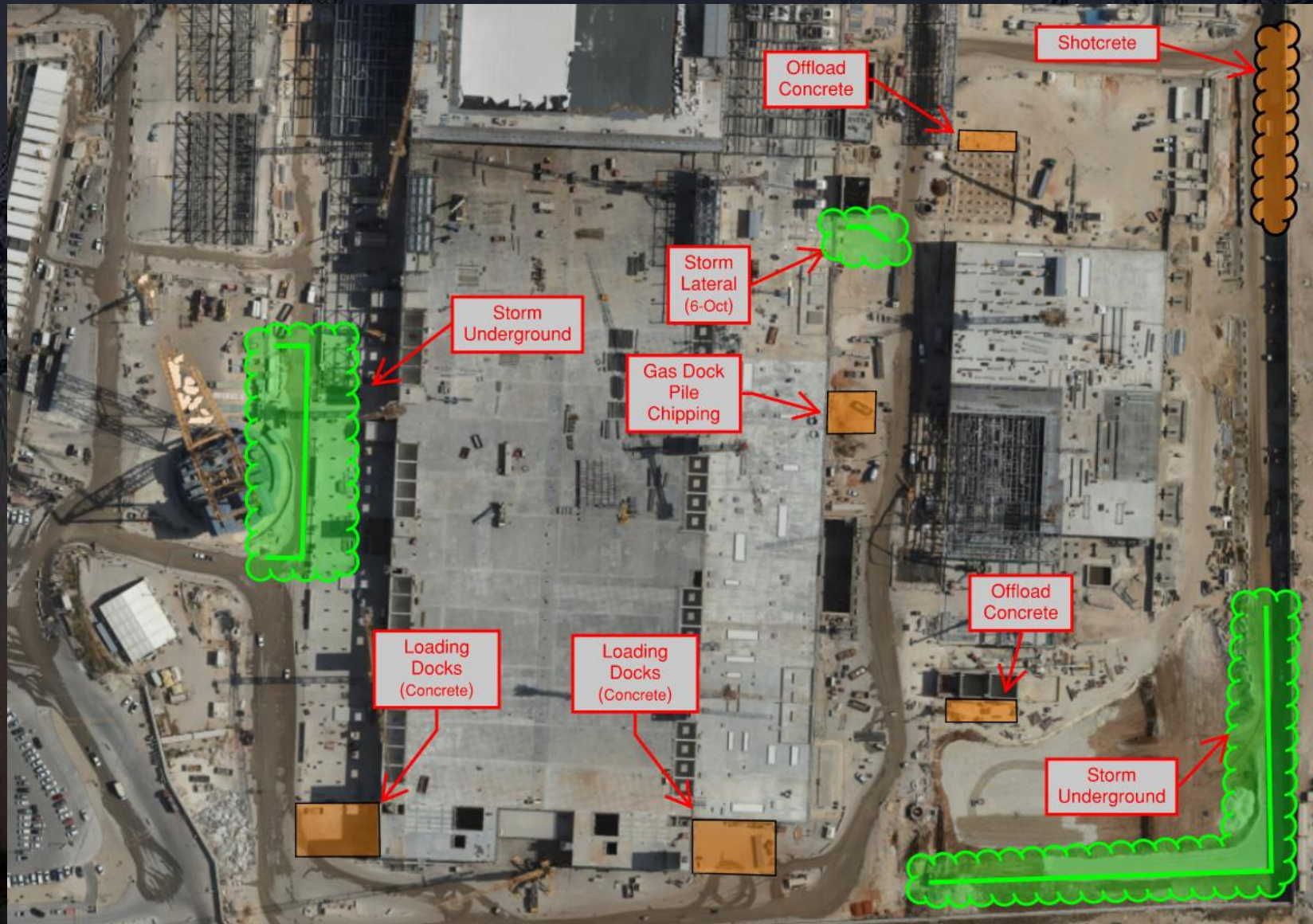
**HOFFMAN CONSTRUCTION COMPANY**



# Daily Coordination Meeting

Site Logistics

South



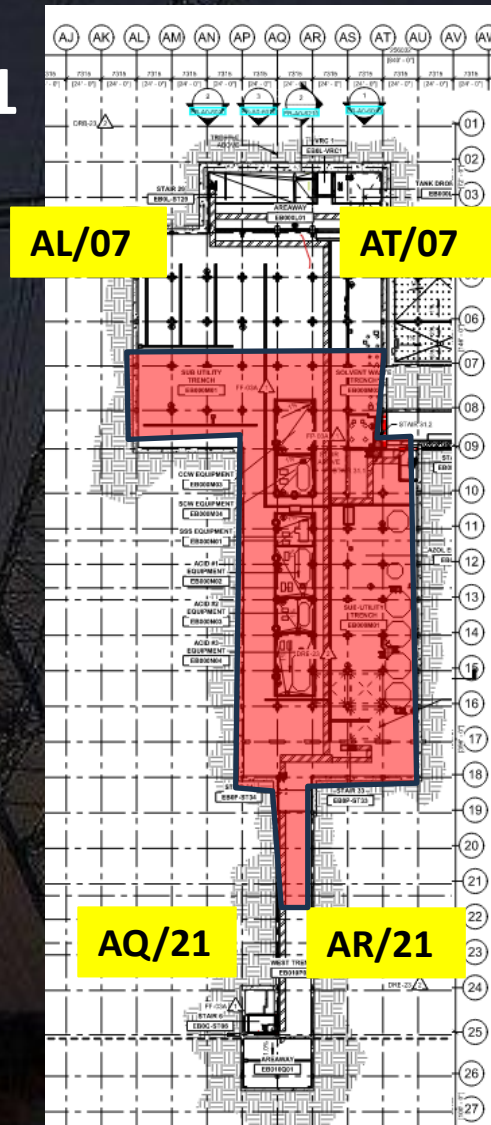




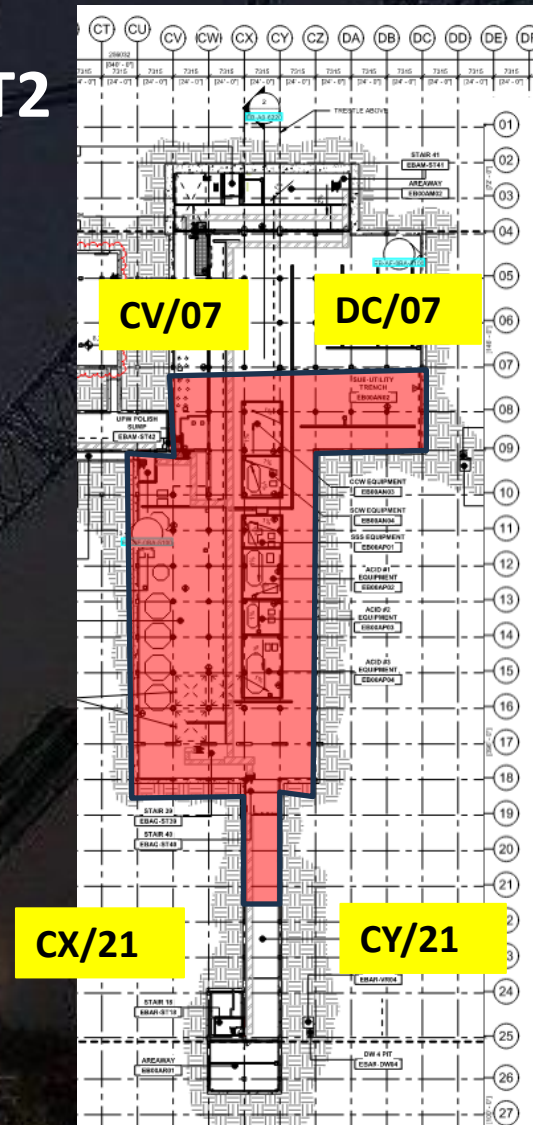
# Daily Coordination Meeting

## Site Logistics - Protected Areas (SUT Level)

SUT1



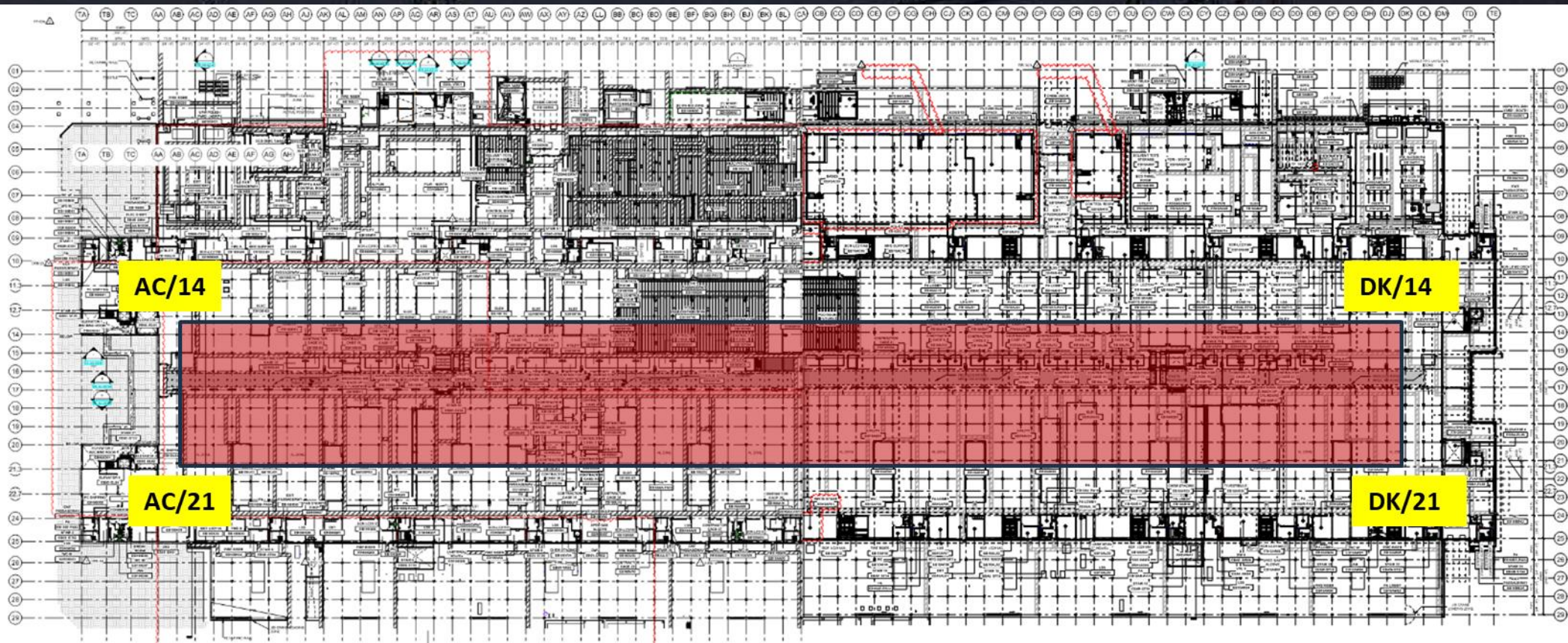
SUT2





# Daily Coordination Meeting

Site Logistics - Protected Areas (Utility Level)





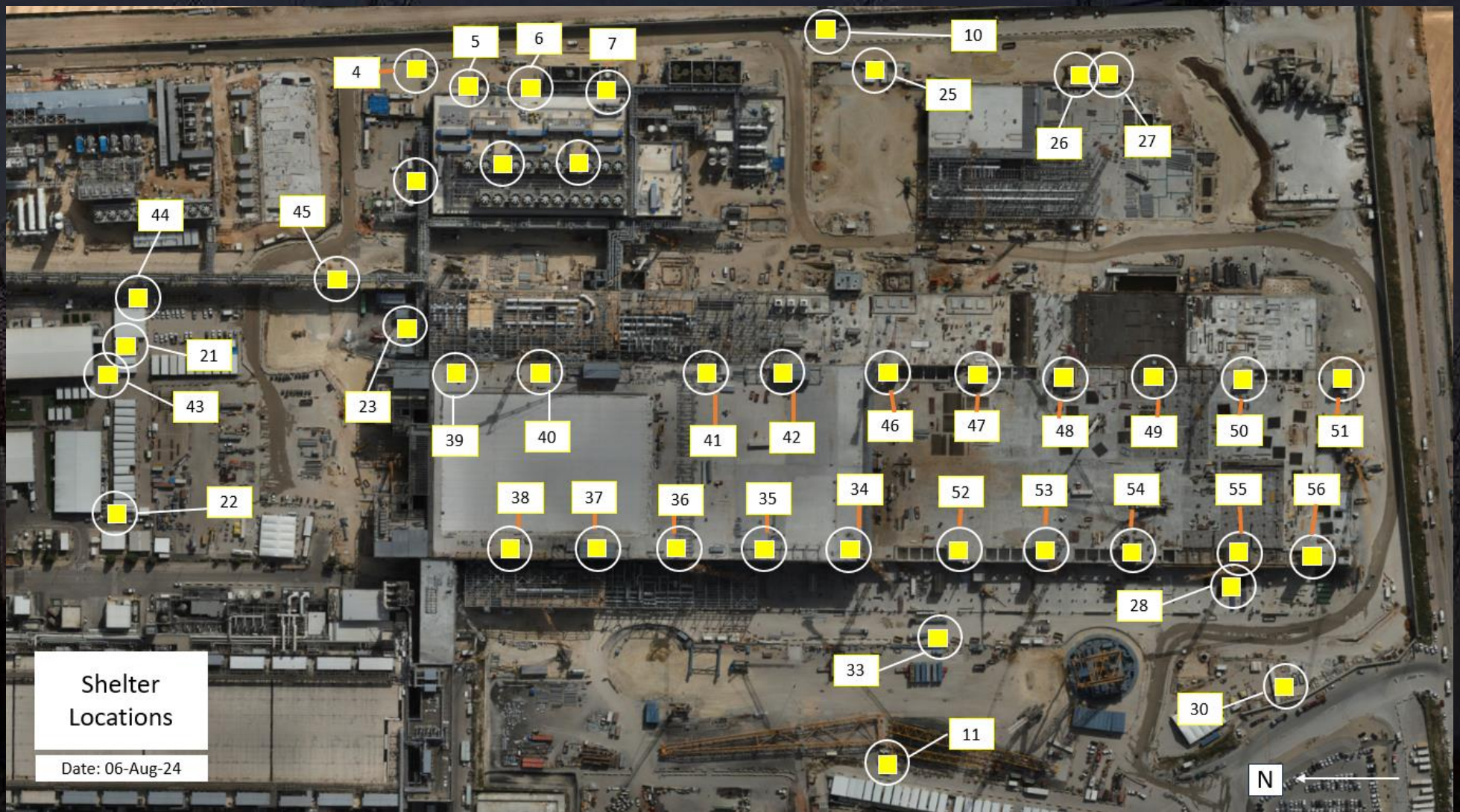




# Daily Coordination Meeting

Site Logistics

Protected Areas





## Mental Health- Stress and Sensitivity

- This time of year can bring many painful memories and stress triggers for people.
- Please make sure you are checking in with your team (and having them do the same) and giving them support if they need it.
- If someone is in need of more support than you are able to give, encourage them to seek professional assistance.
- **It is okay to not be okay.** There is no shame in needing a professional to help you or the people you know process and heal.
- Be tough enough to talk!



# Daily Coordination Meeting



14:00 Sign In