

Daily Coordination Meeting



14:00 Sign In

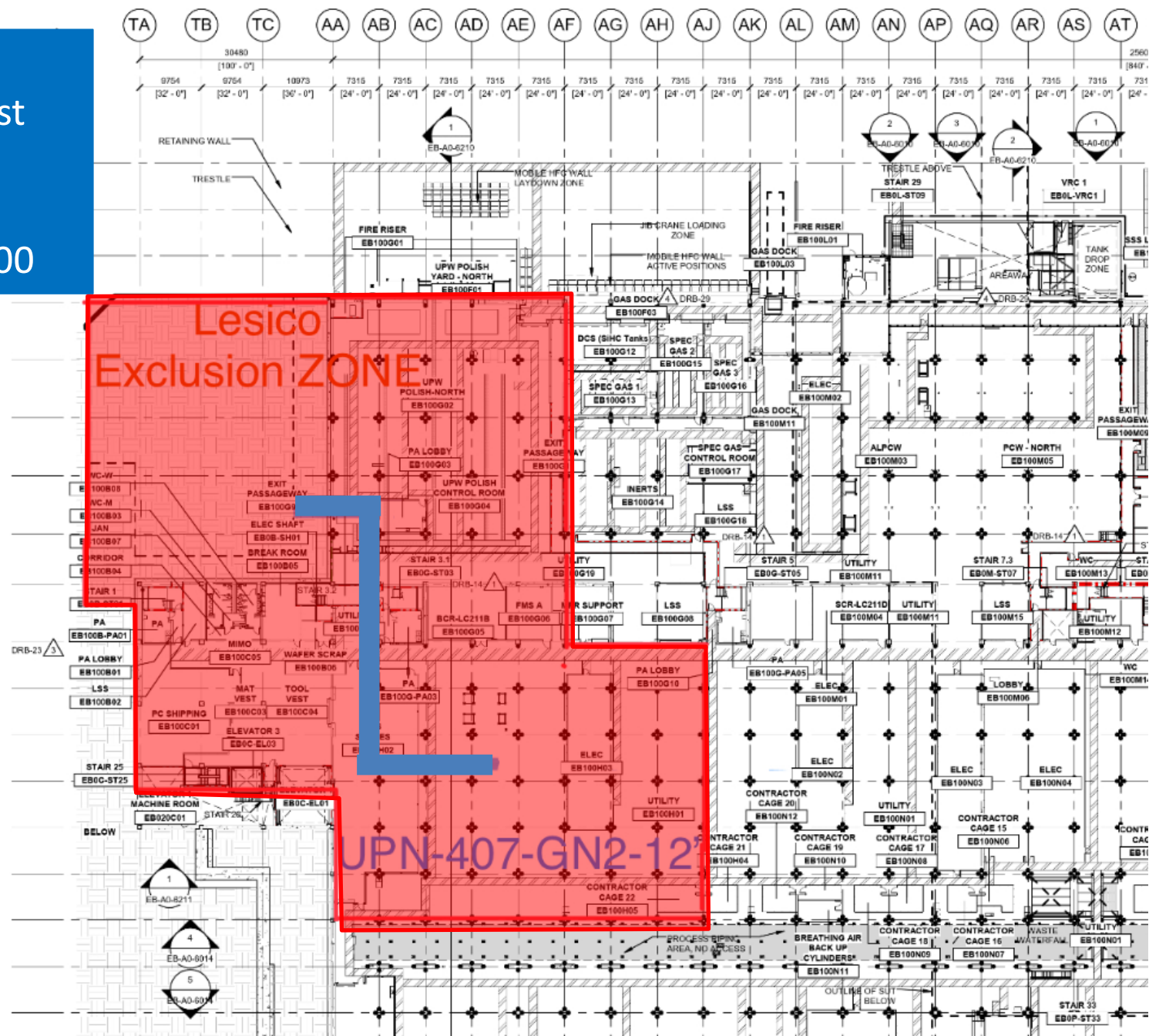
Daily Coordination Meeting

General Topics:

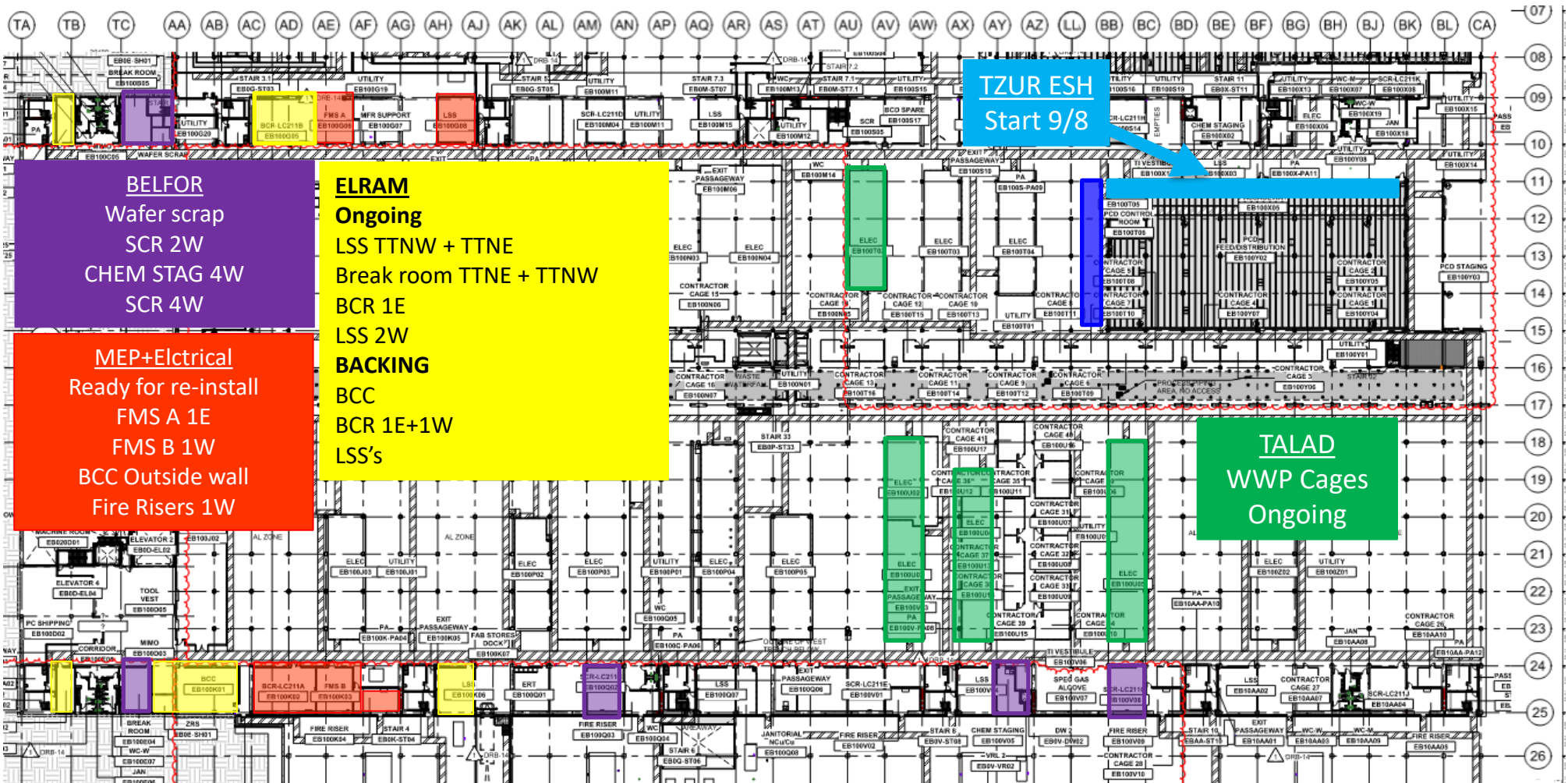
- Barricade perimeter distance



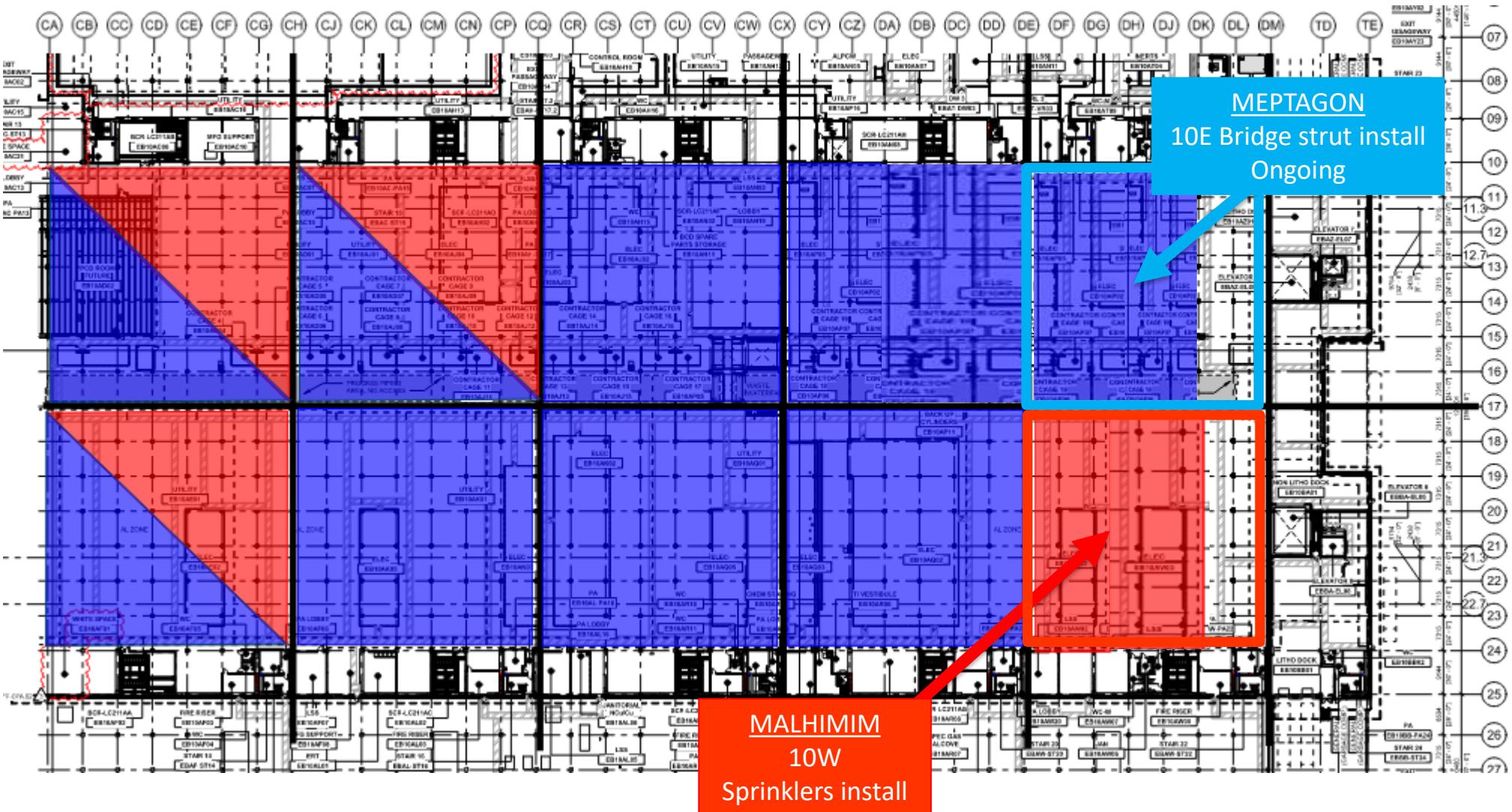
LESICO
Press. Test
GN2
8/29
From 17:00



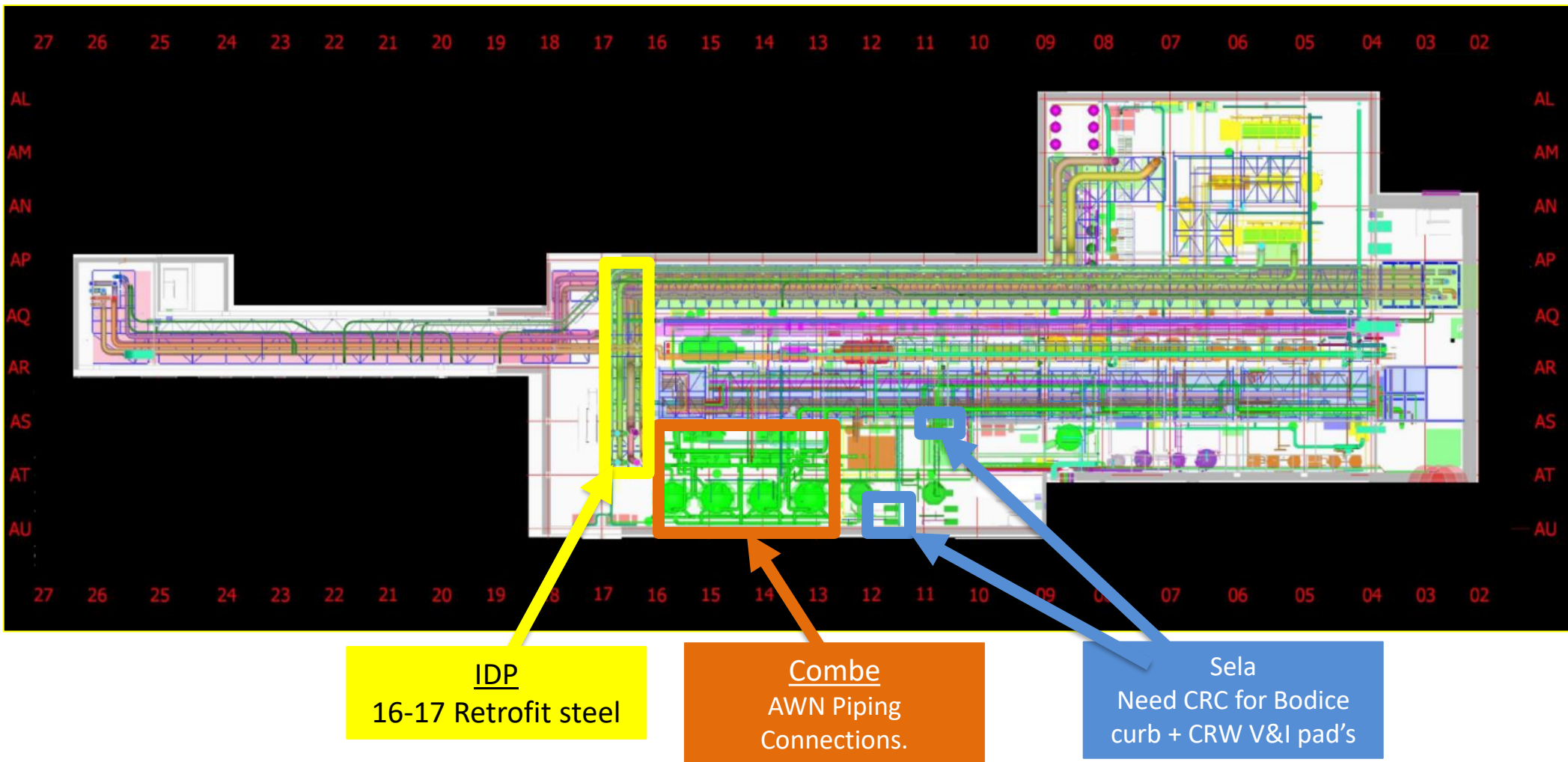
UTILITY LEVEL MOD1



UTILITY LEVEL MOD2

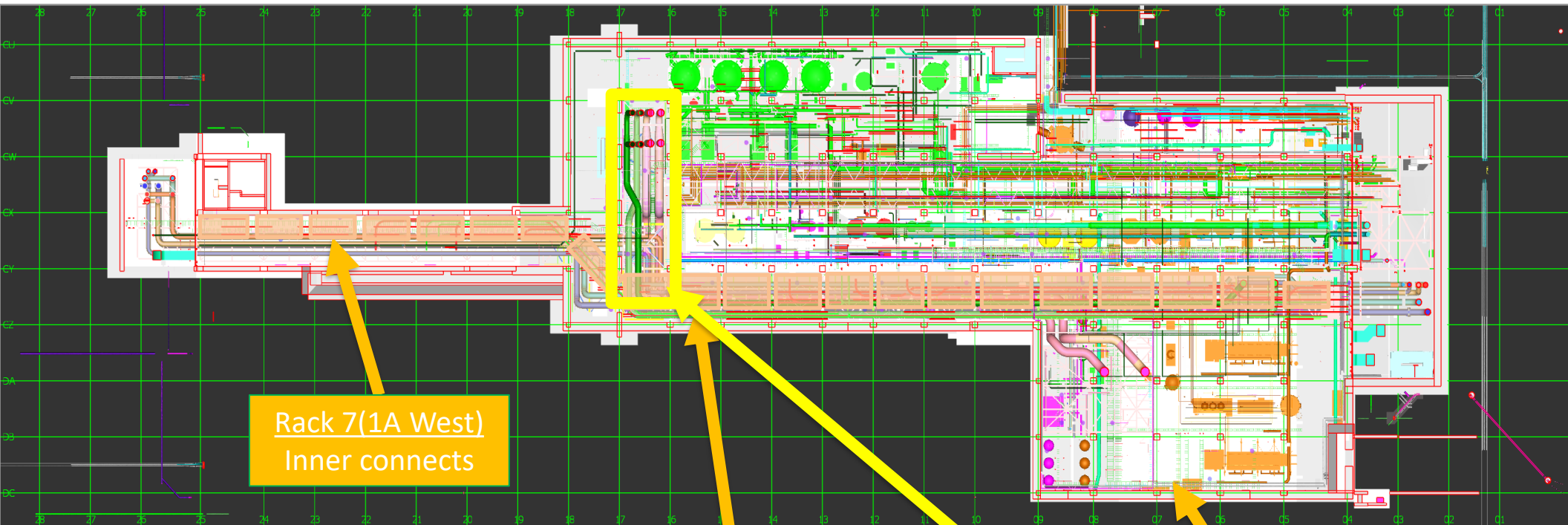


SUT 38.1 LEVEL





SUT 38.2 LEVEL



Rack 7(1A West)
Inner connects

1A Rack
Inner connects

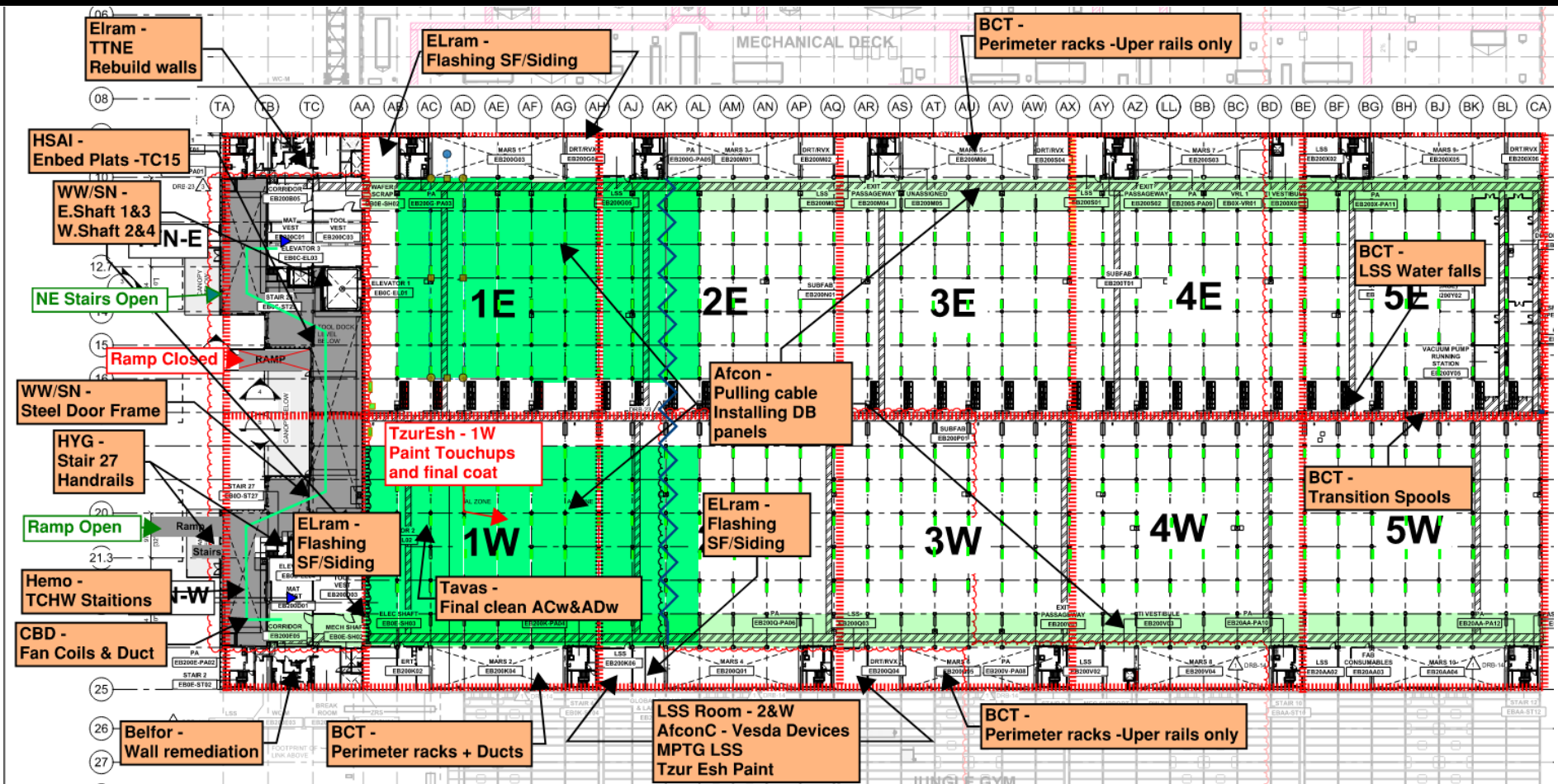
16-17 line
Upper Steel Bed
Pipe load-in

8 Rack
Lifting

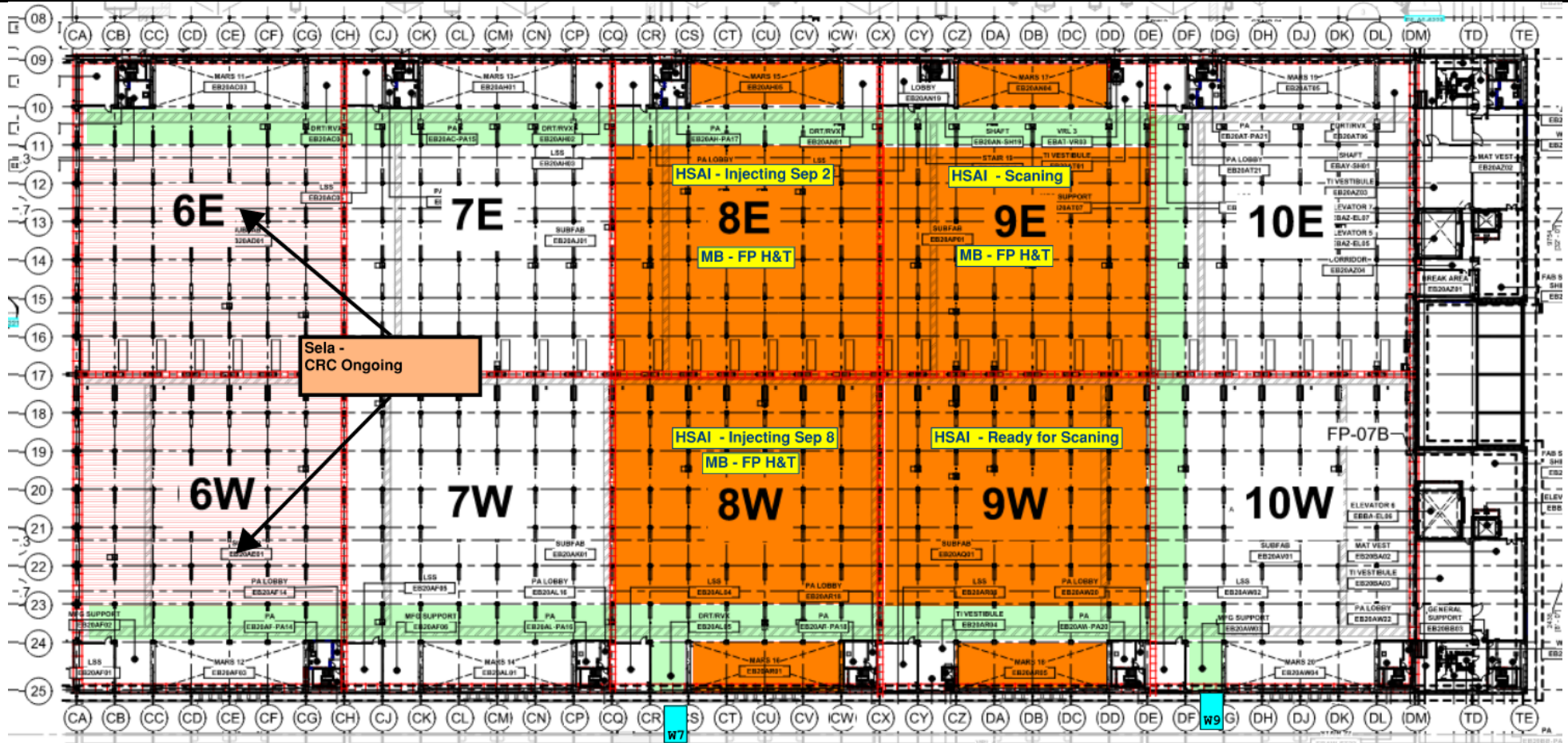
CRW
H&T
Installing supports

Vesda
H&T
Not actively installing

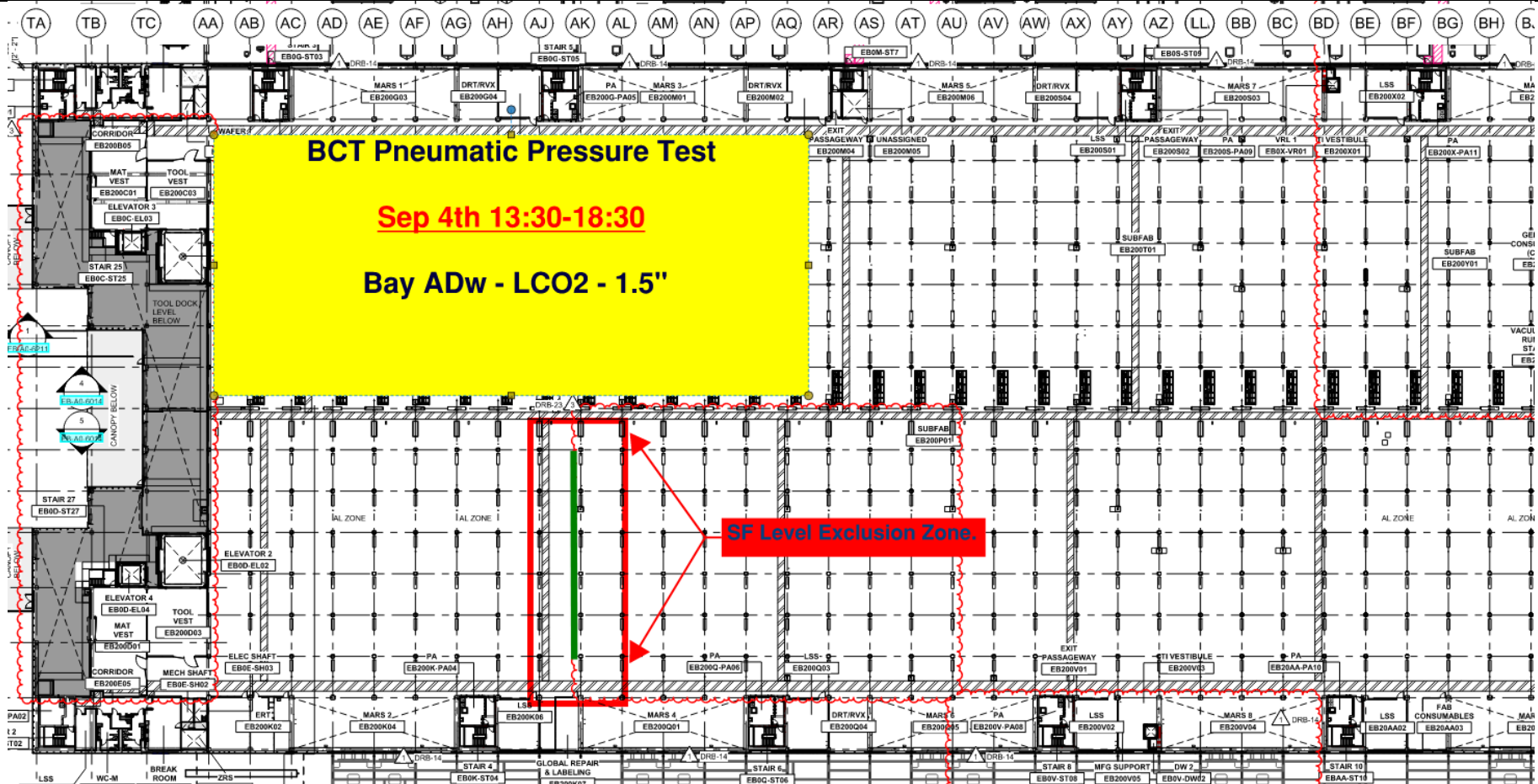
SUBFAB BUILDOUT MOD 1



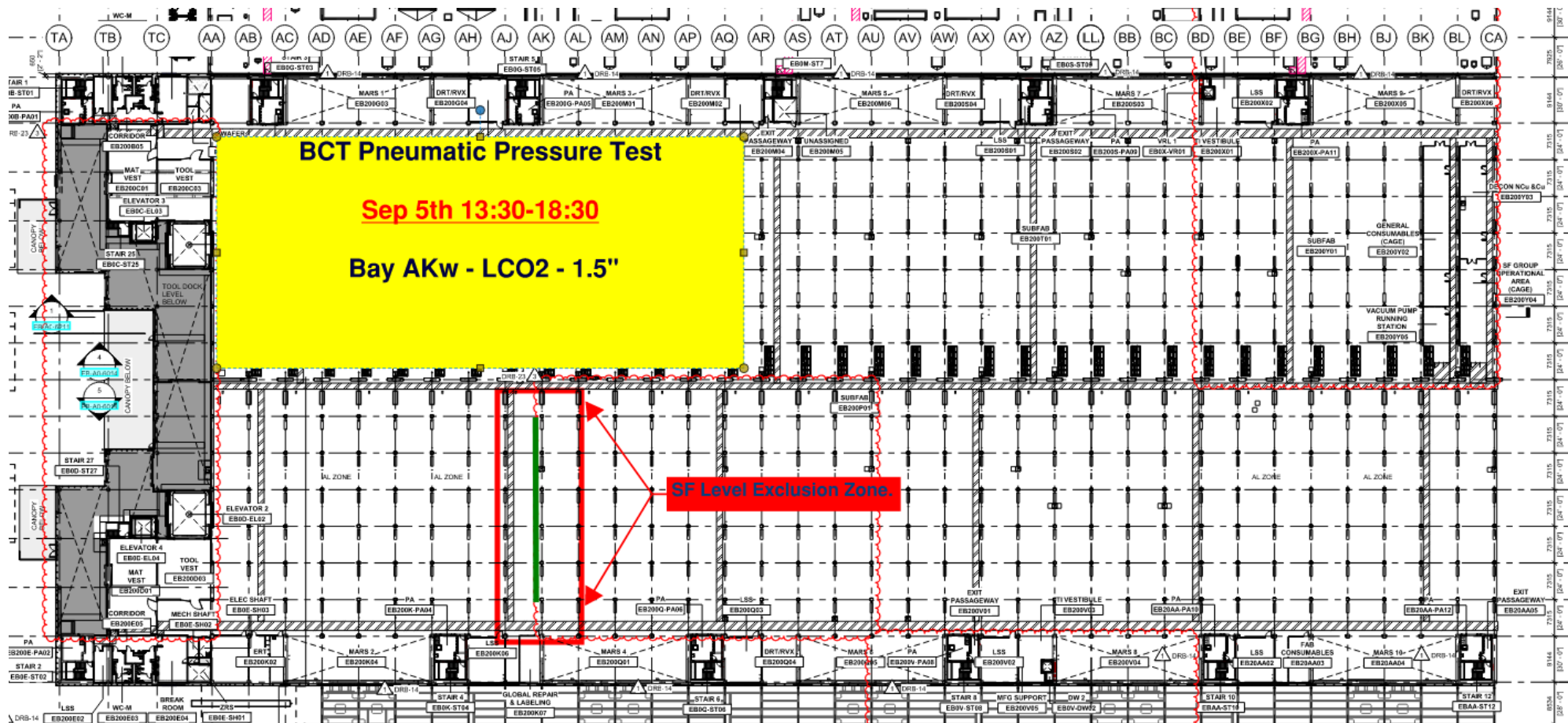
SUBFAB BUILDOUT MOD 2



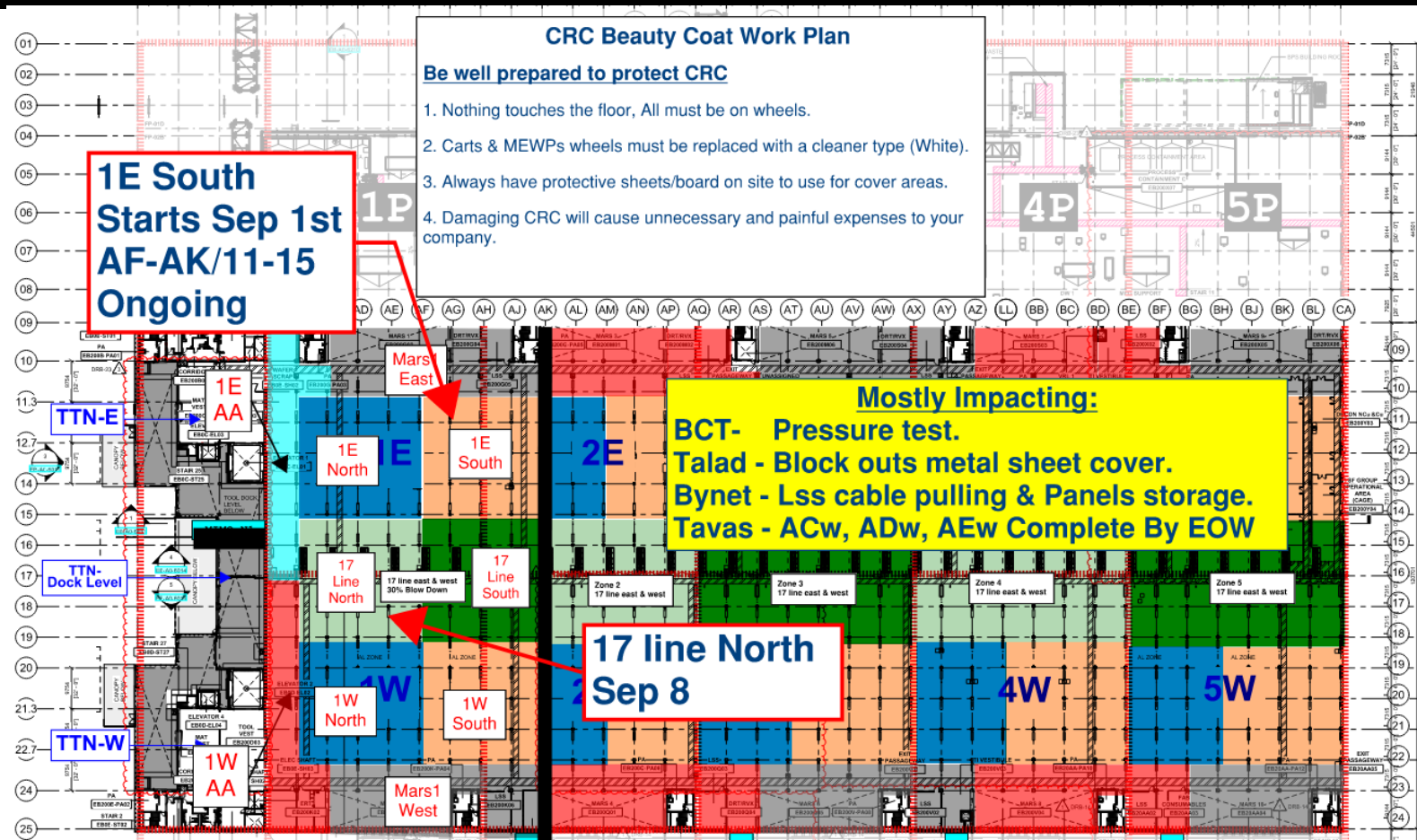
SUBFUB PRESSURE TEST EXCLUSION ZONES

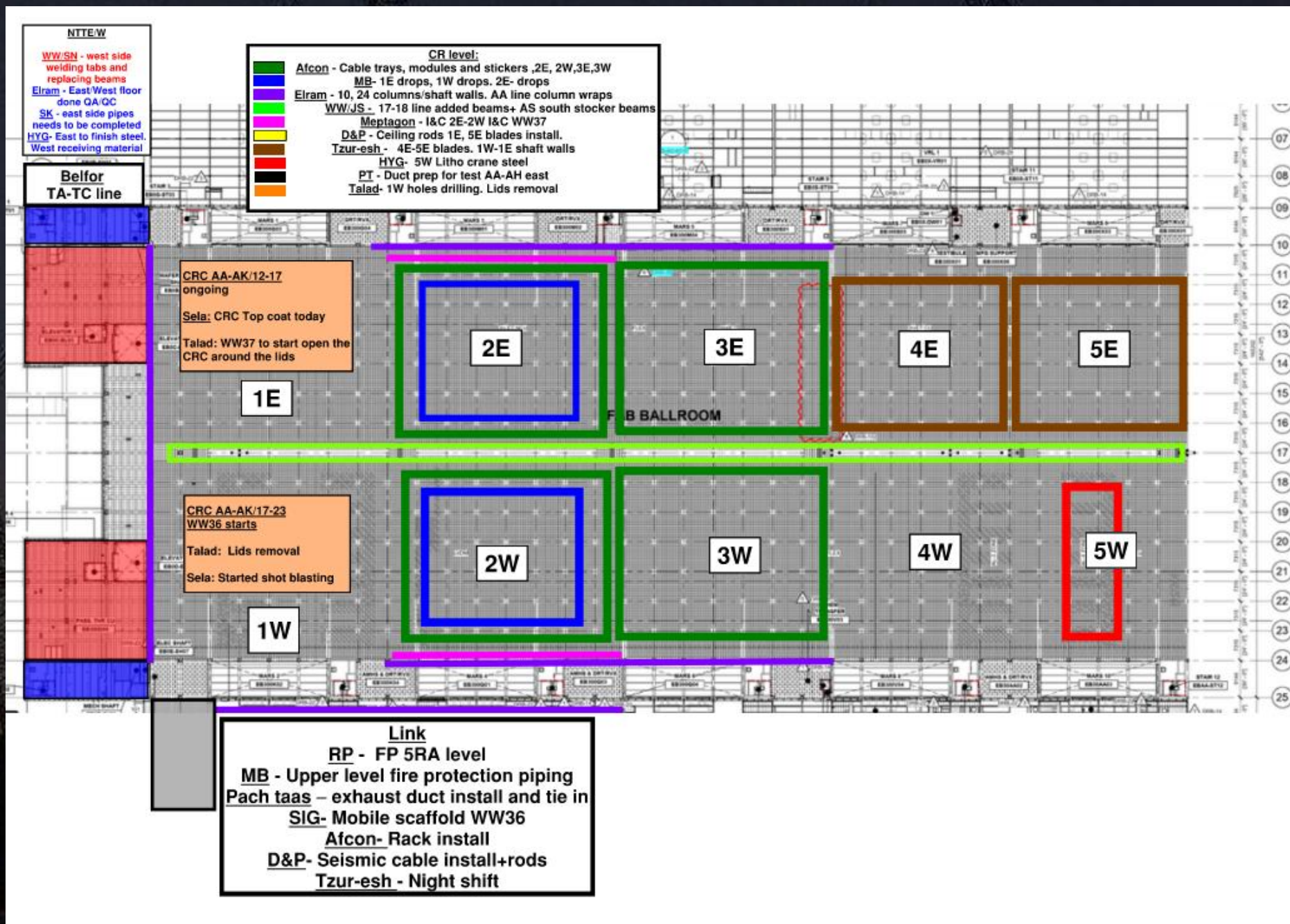


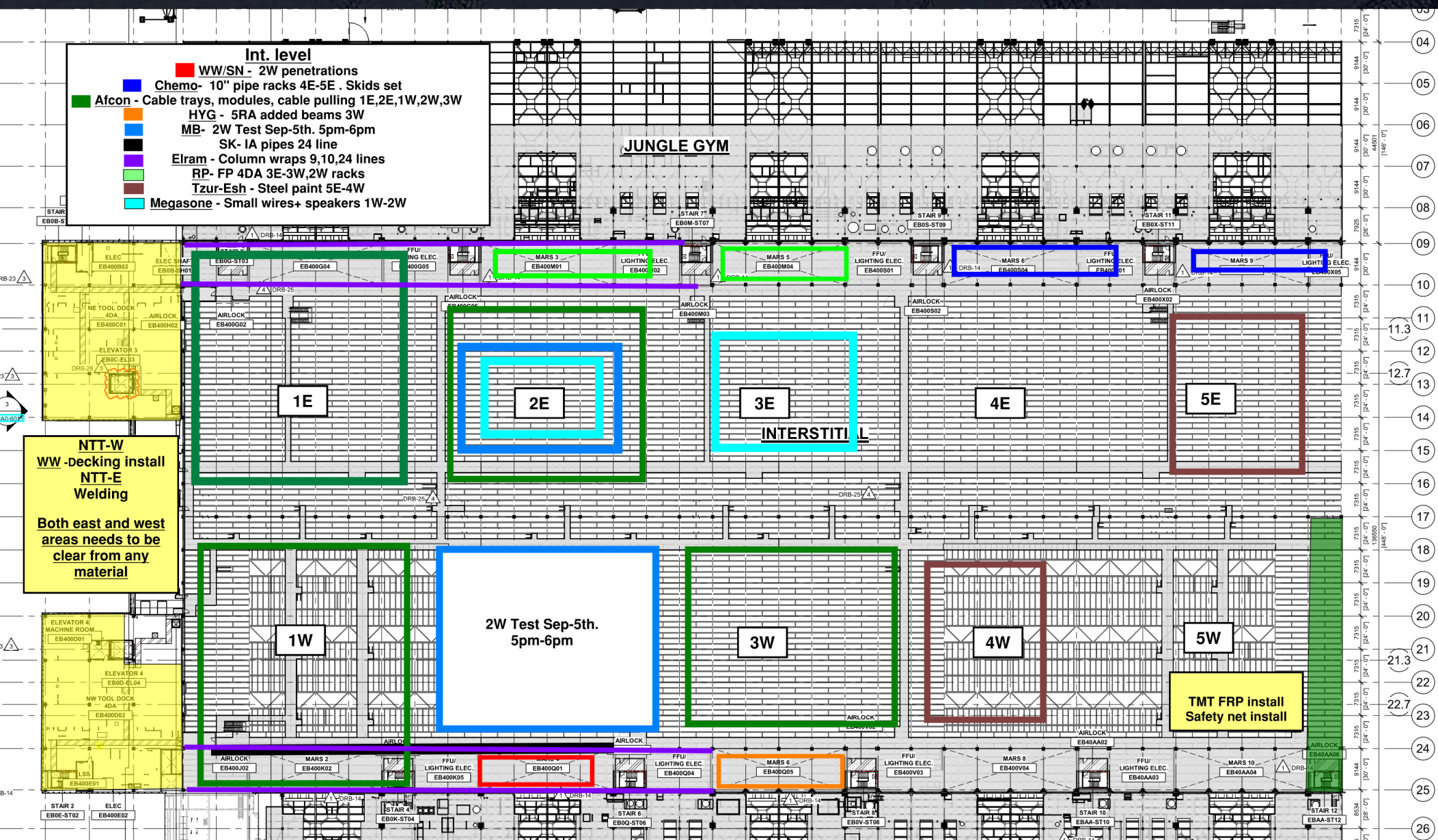
SUBFUB PRESSURE TEST EXCLUSION ZONES

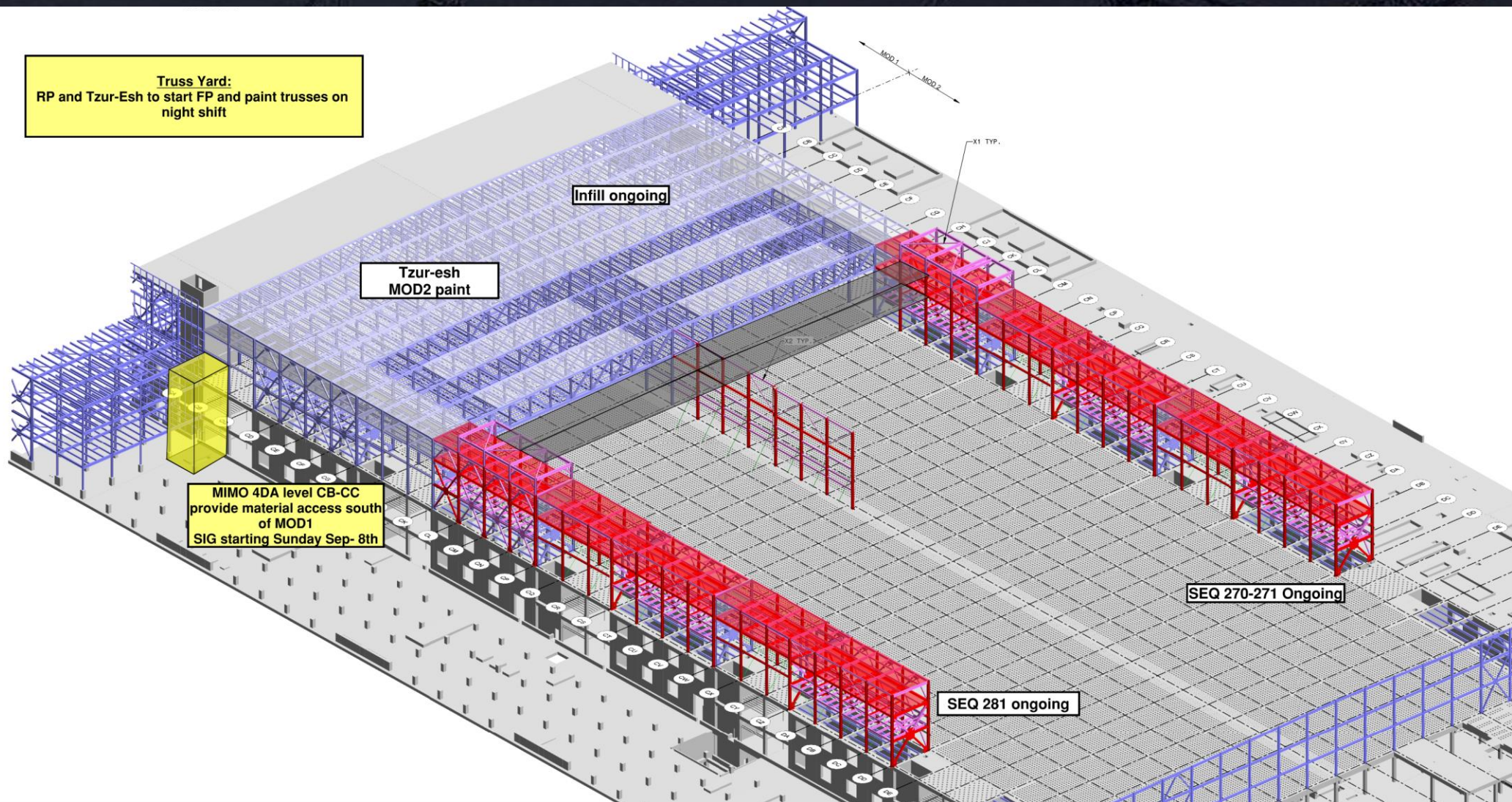


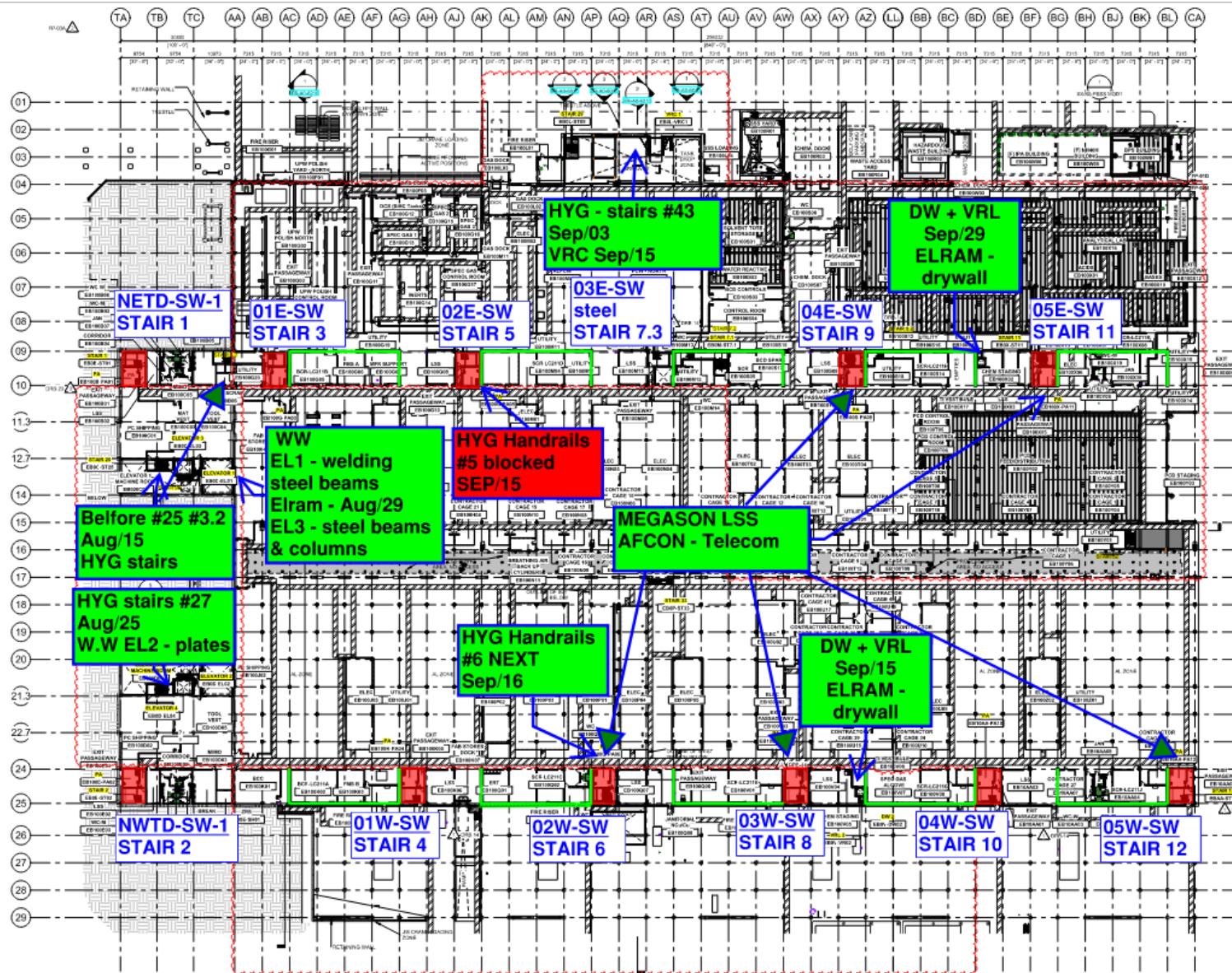
SUBFAB CRC TOPCOAT

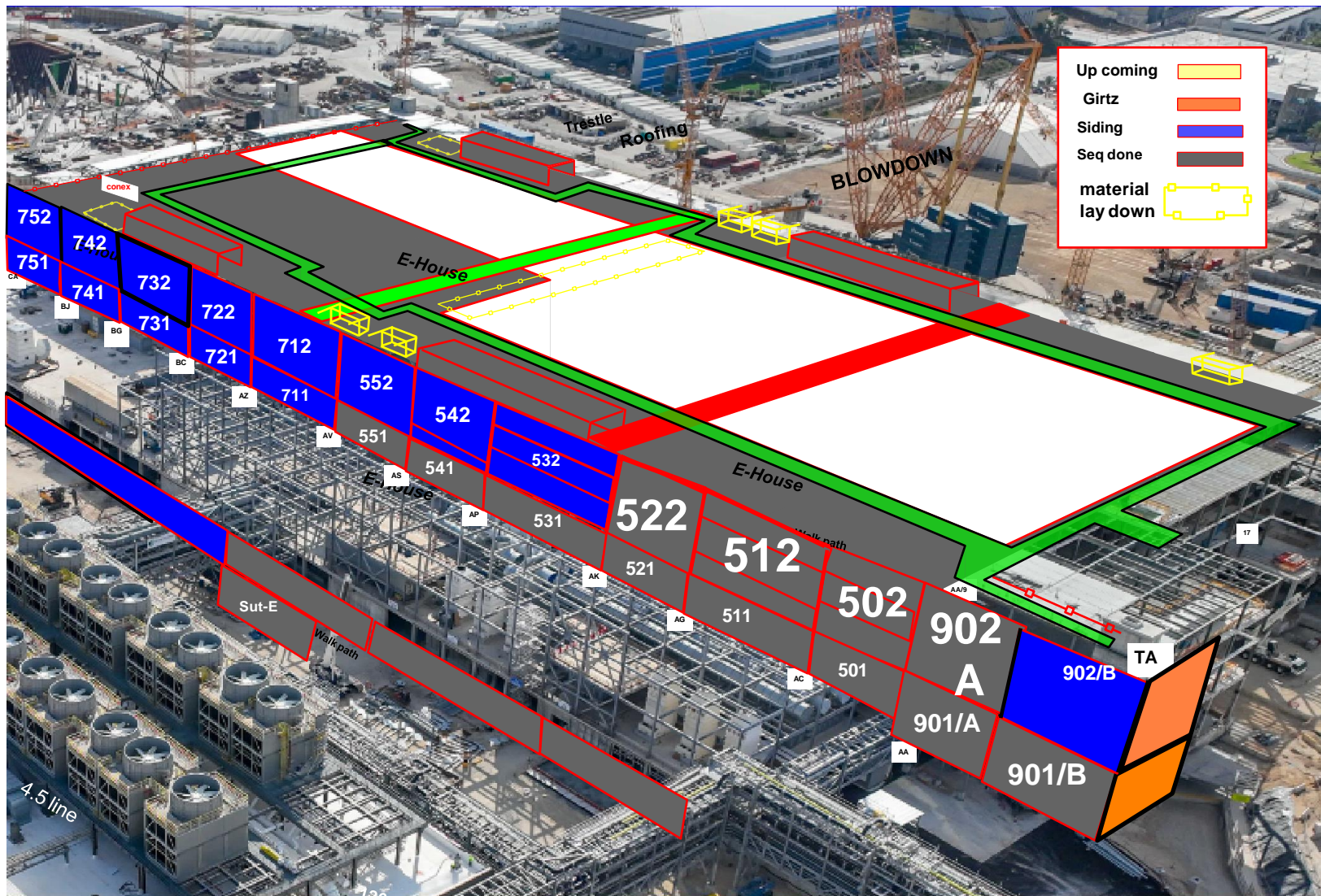




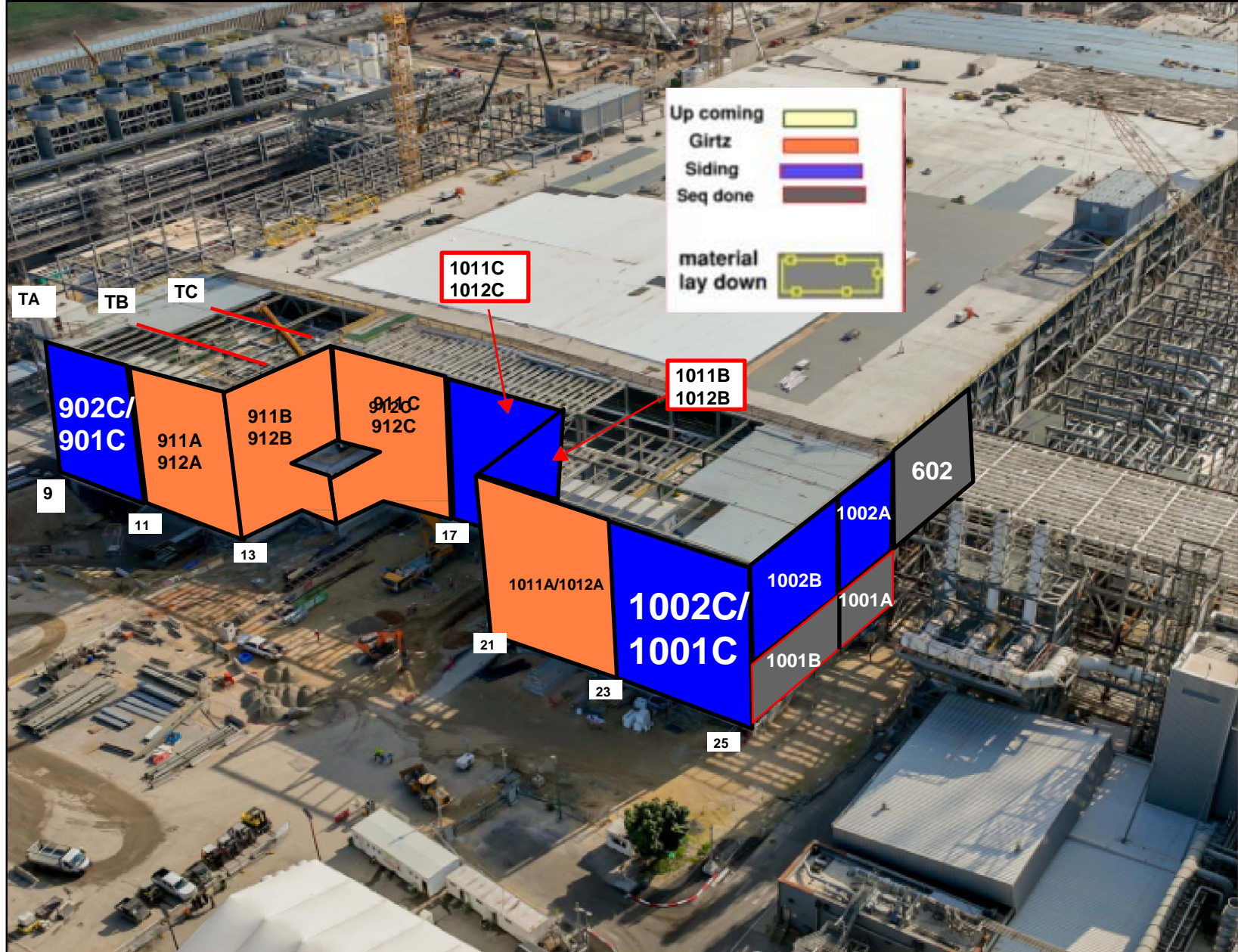


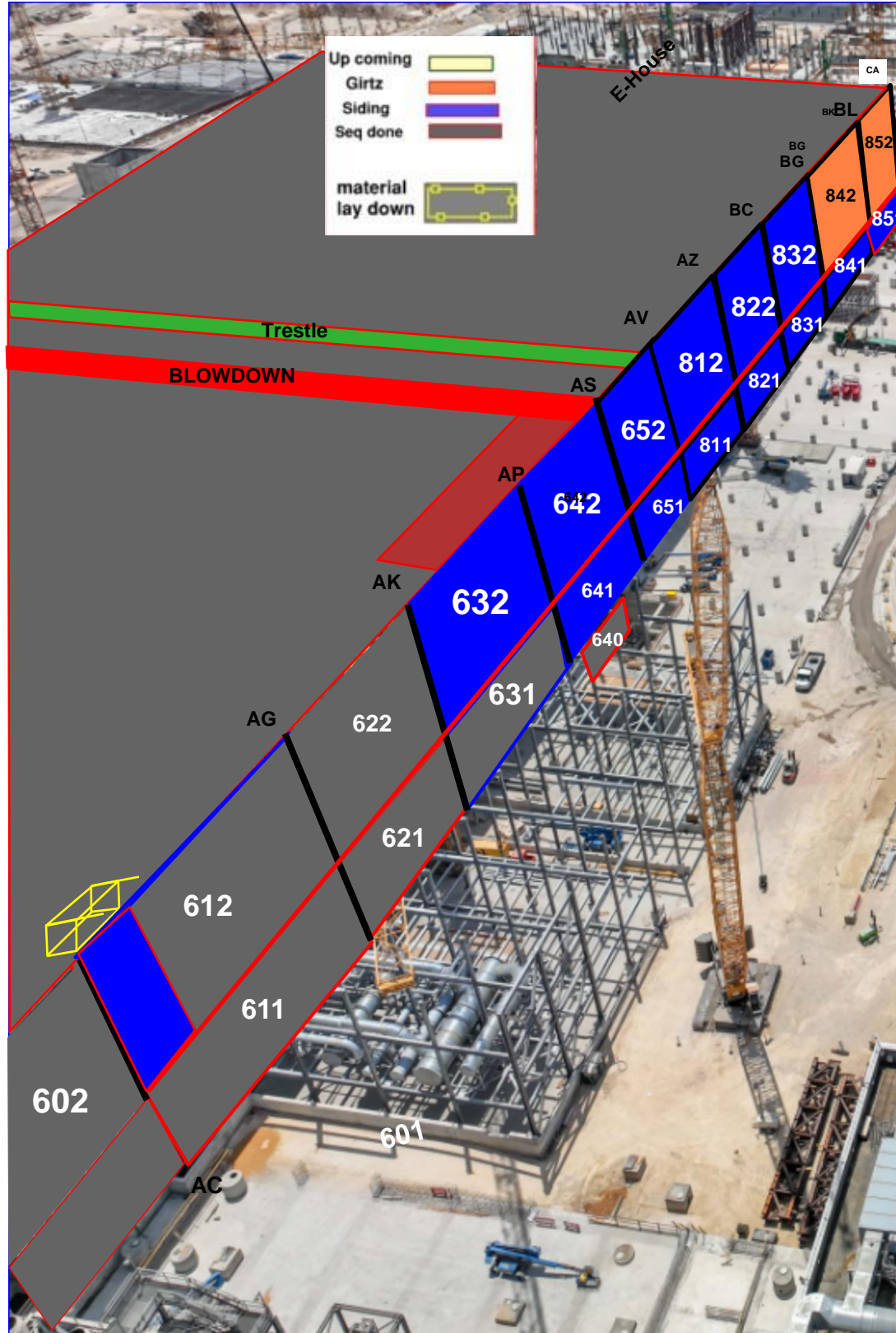






Walk path





[illegible]

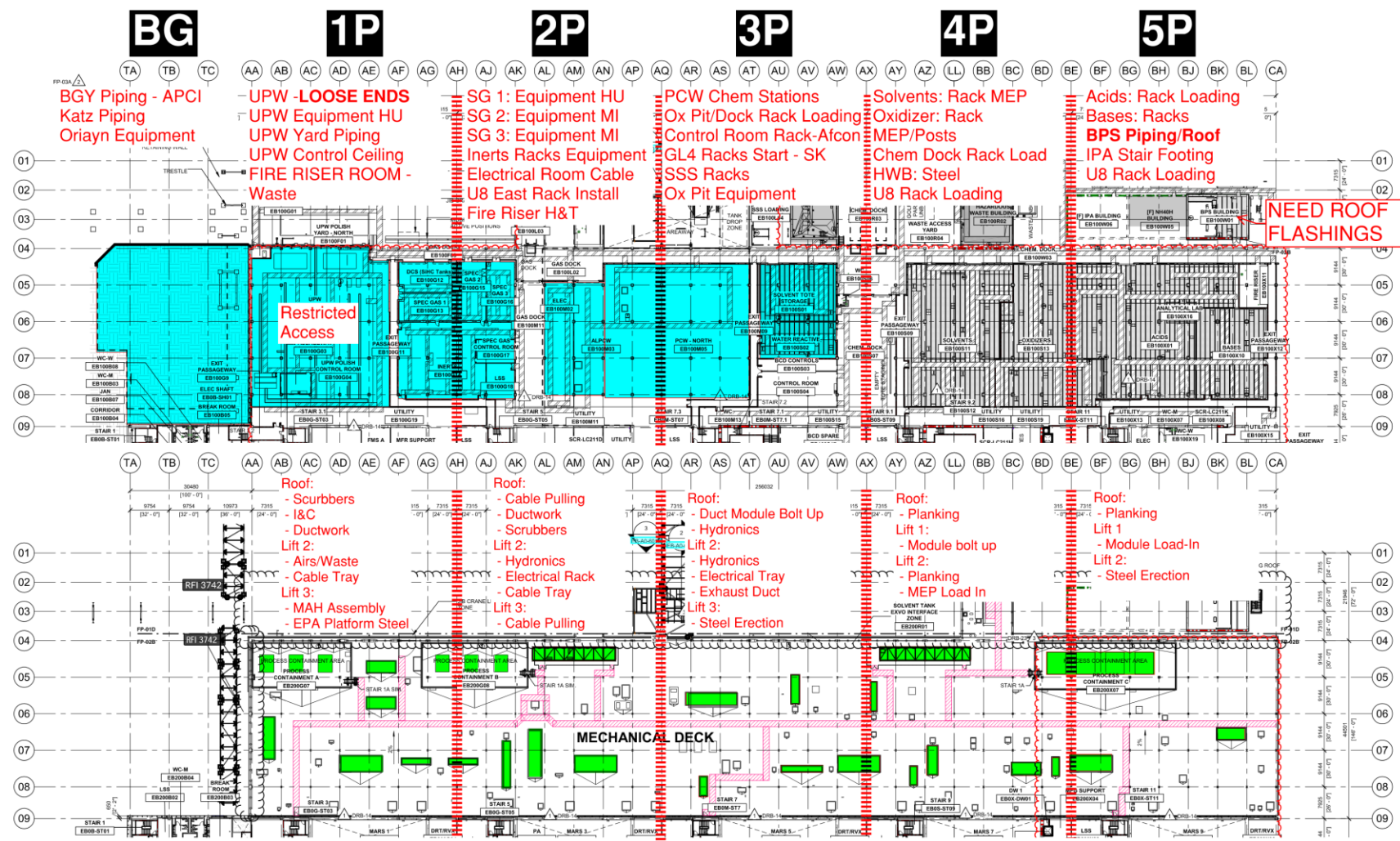
Siding - West FAB - JYG

[illegible]

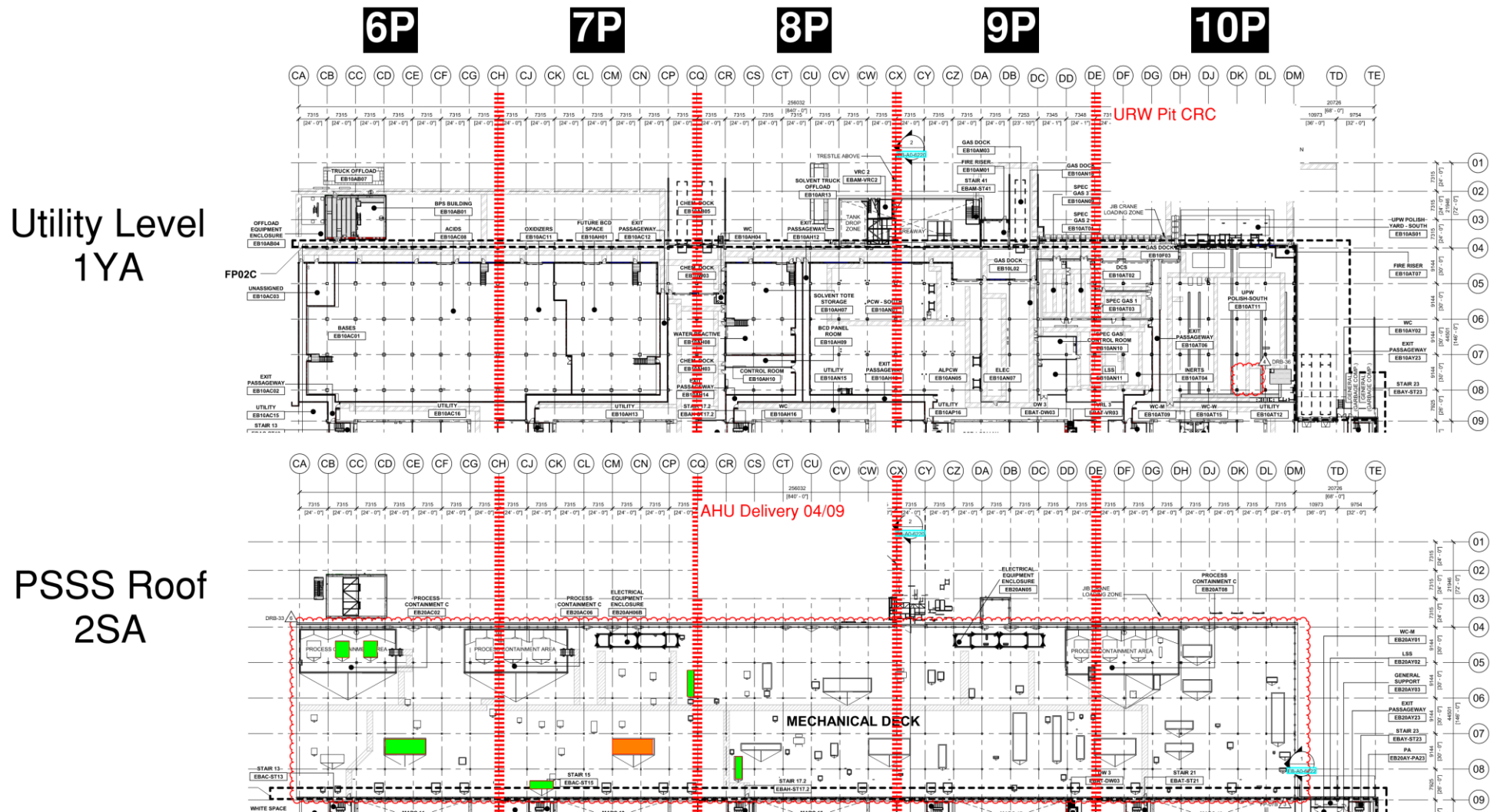
PSSS.1

Utility Level
1YA

PSSS Roof
2SA



PSSS.2

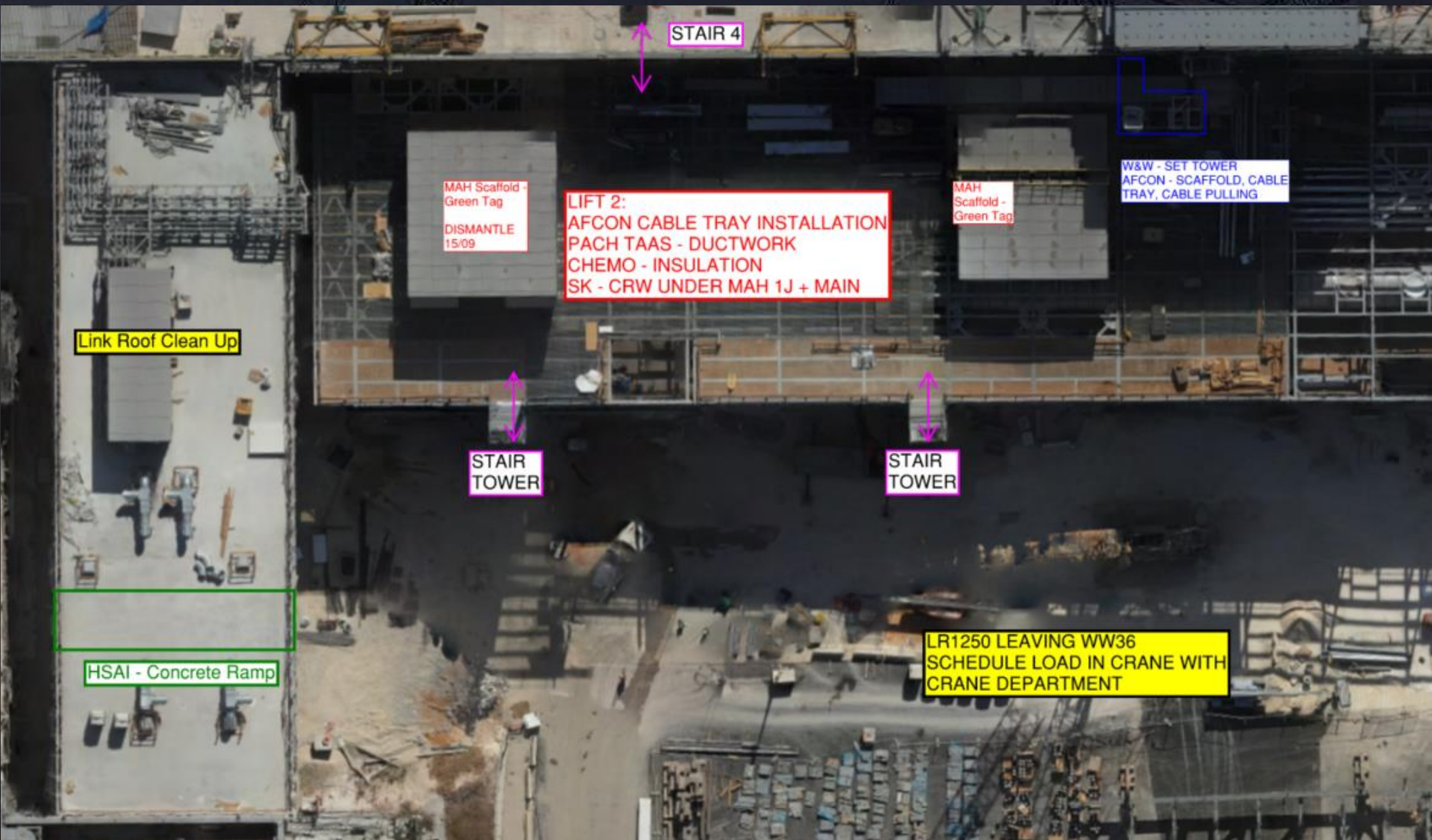


Utility Level 1YA

PSSS Roof
2SA



WJG 01J, 02J LIFT 2 & 3



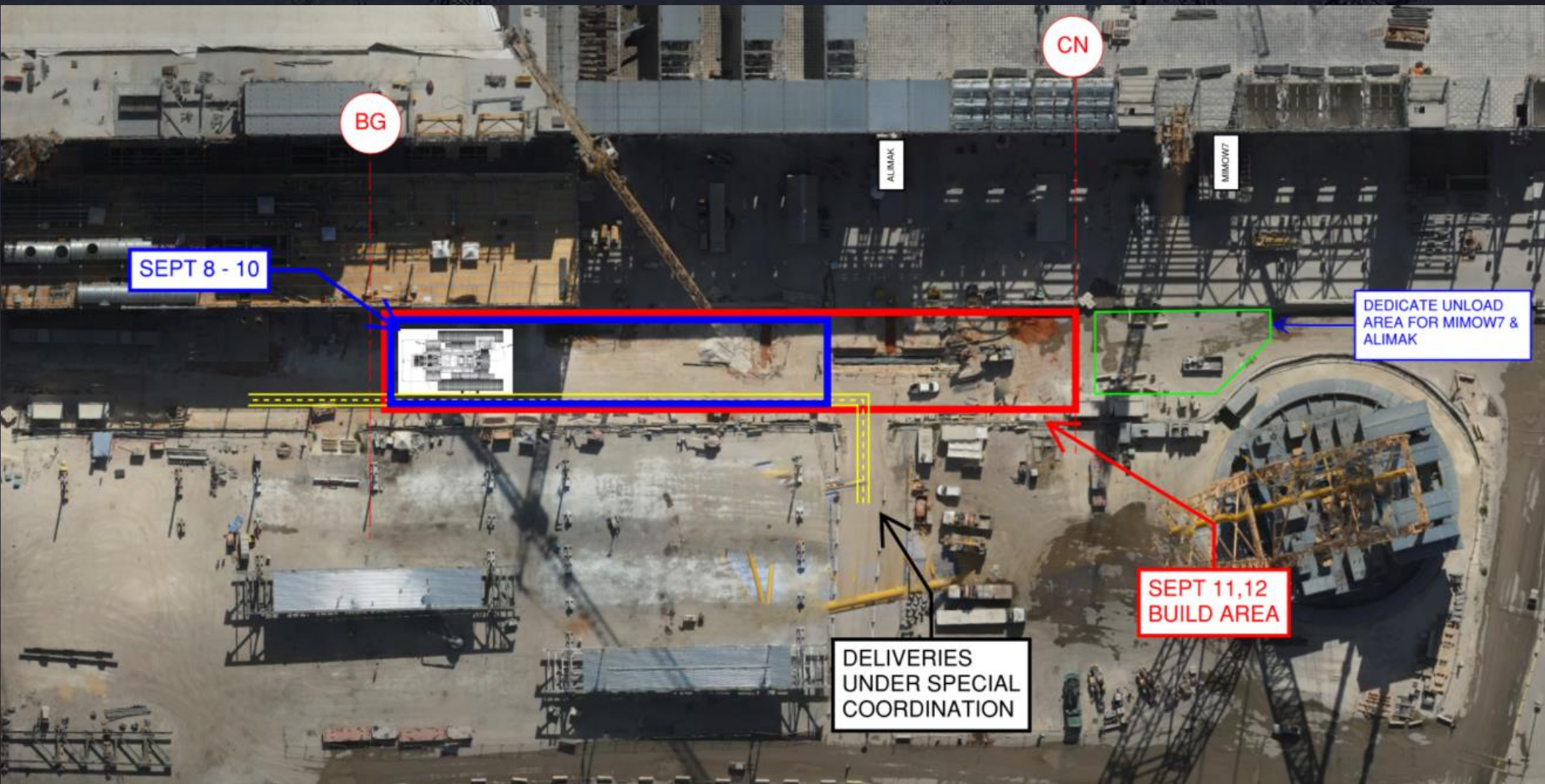


WJG 03J, 04J, 05J LIFT 2 & 3



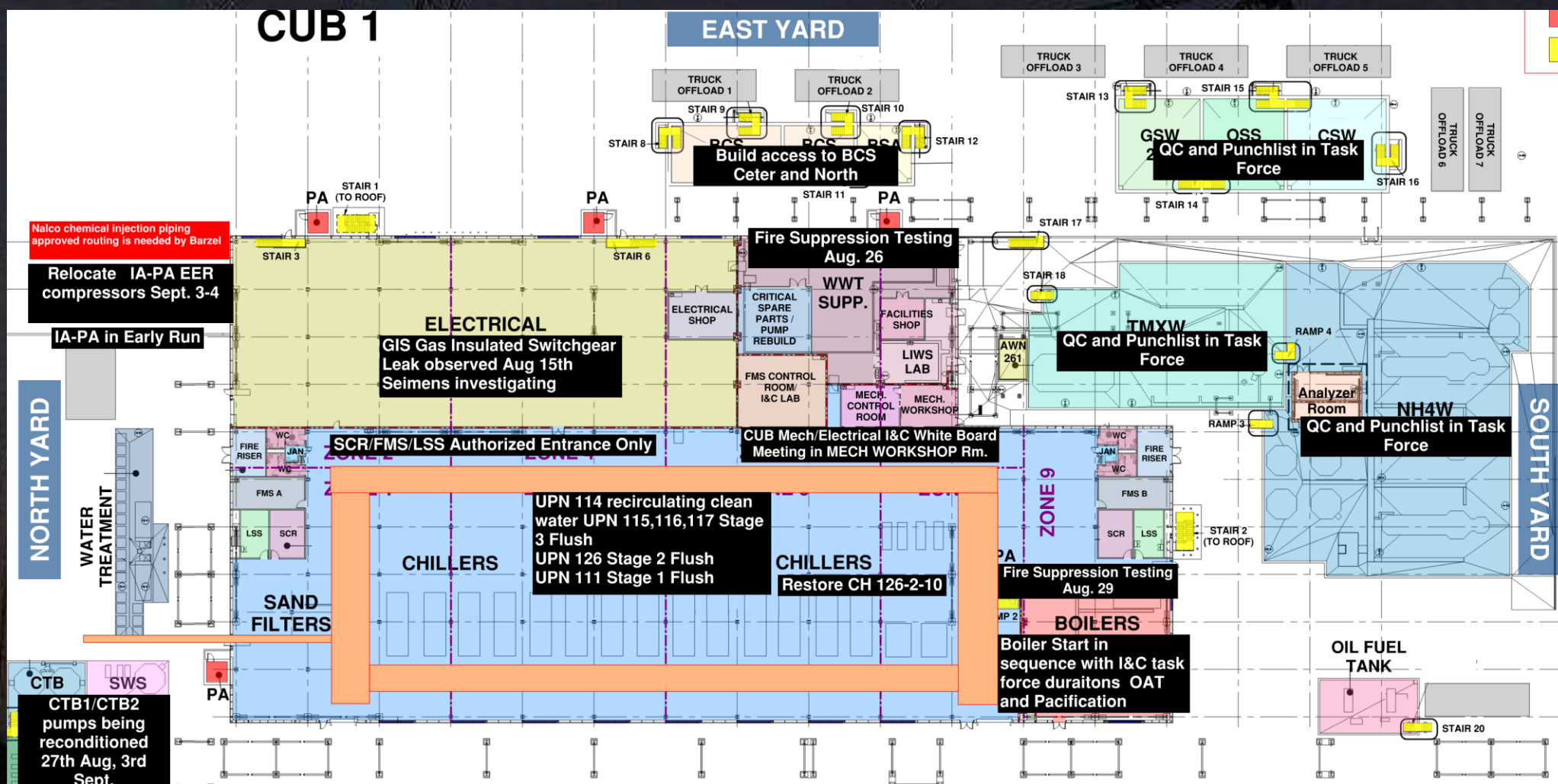
[illegible]

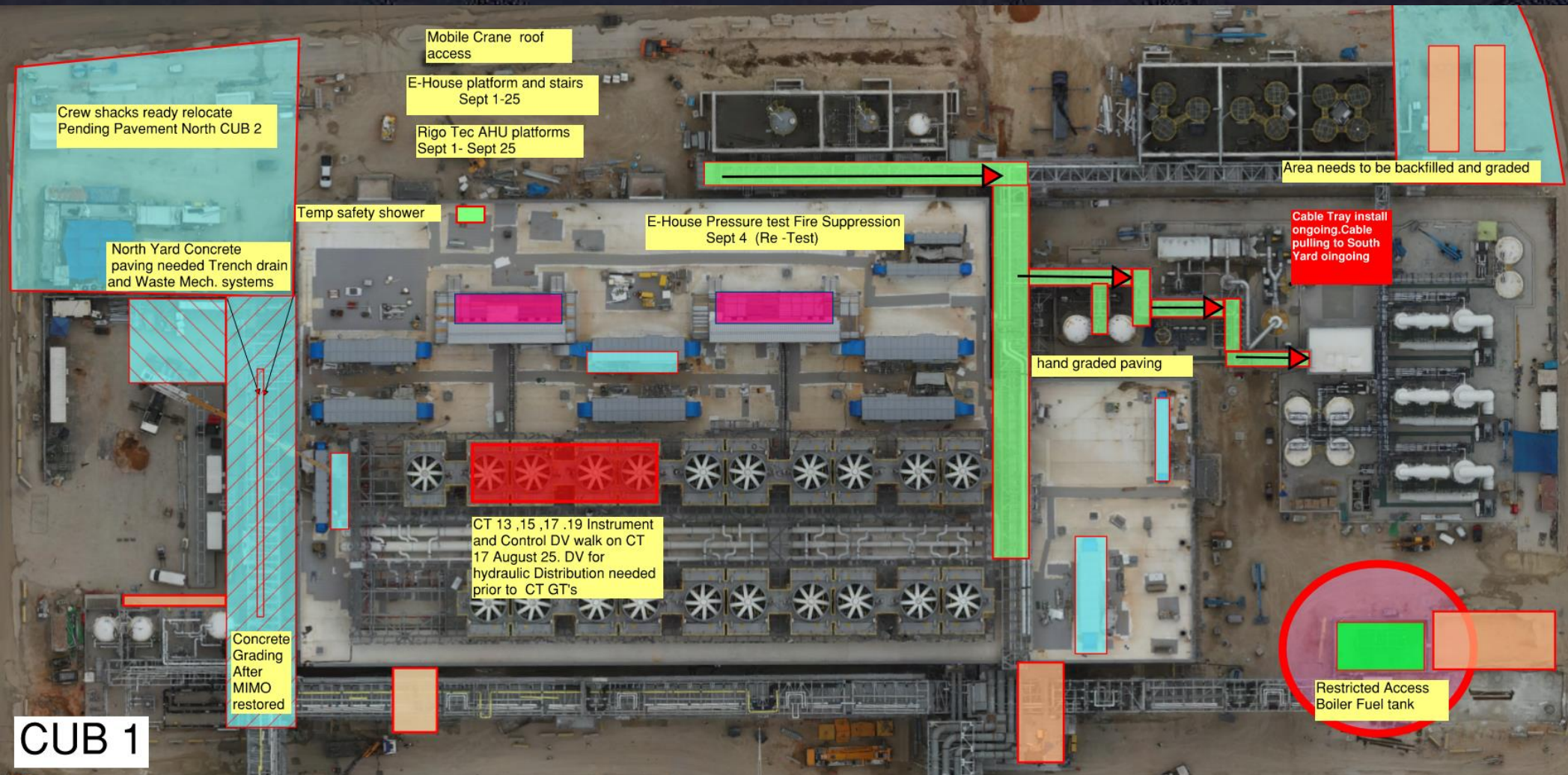
CC3800 Crane Build 08/09 – 11/09

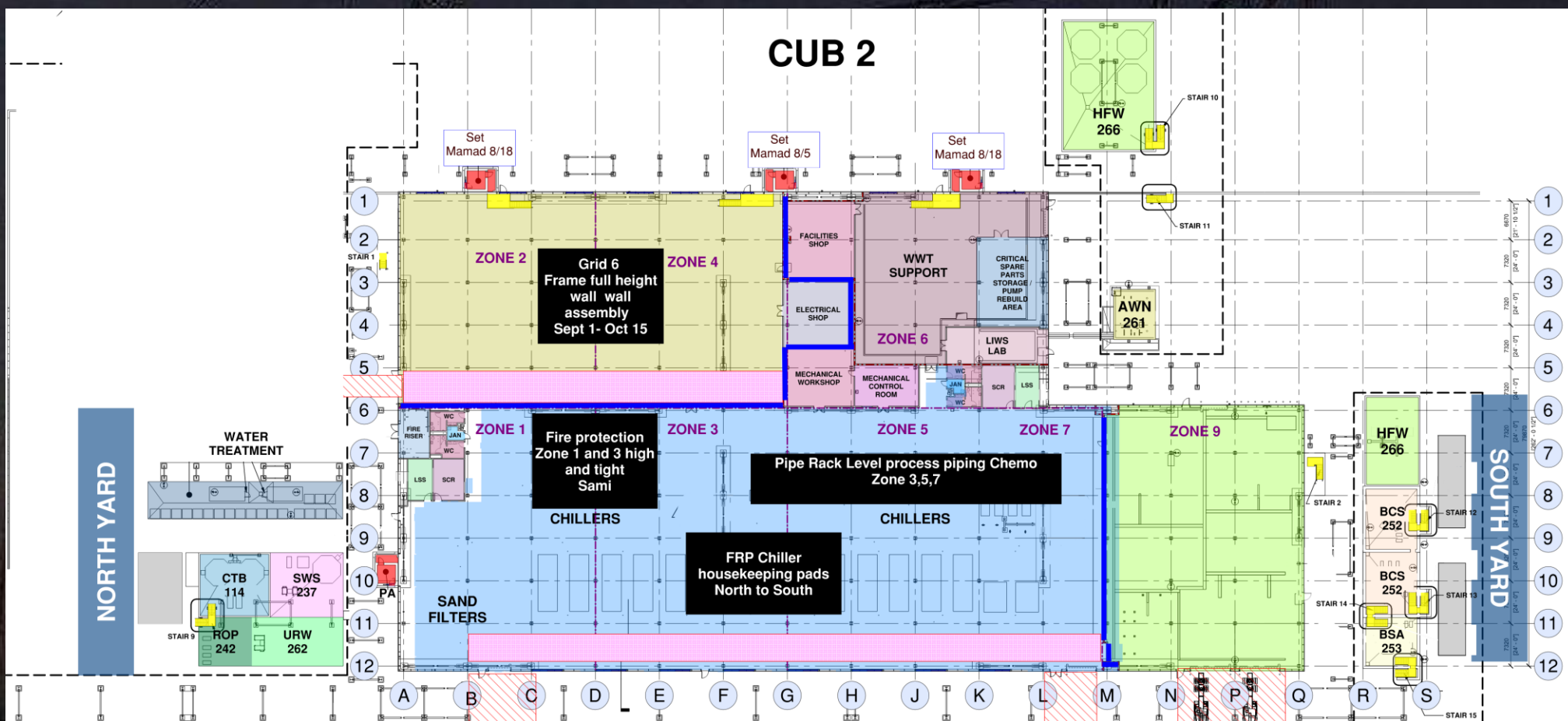


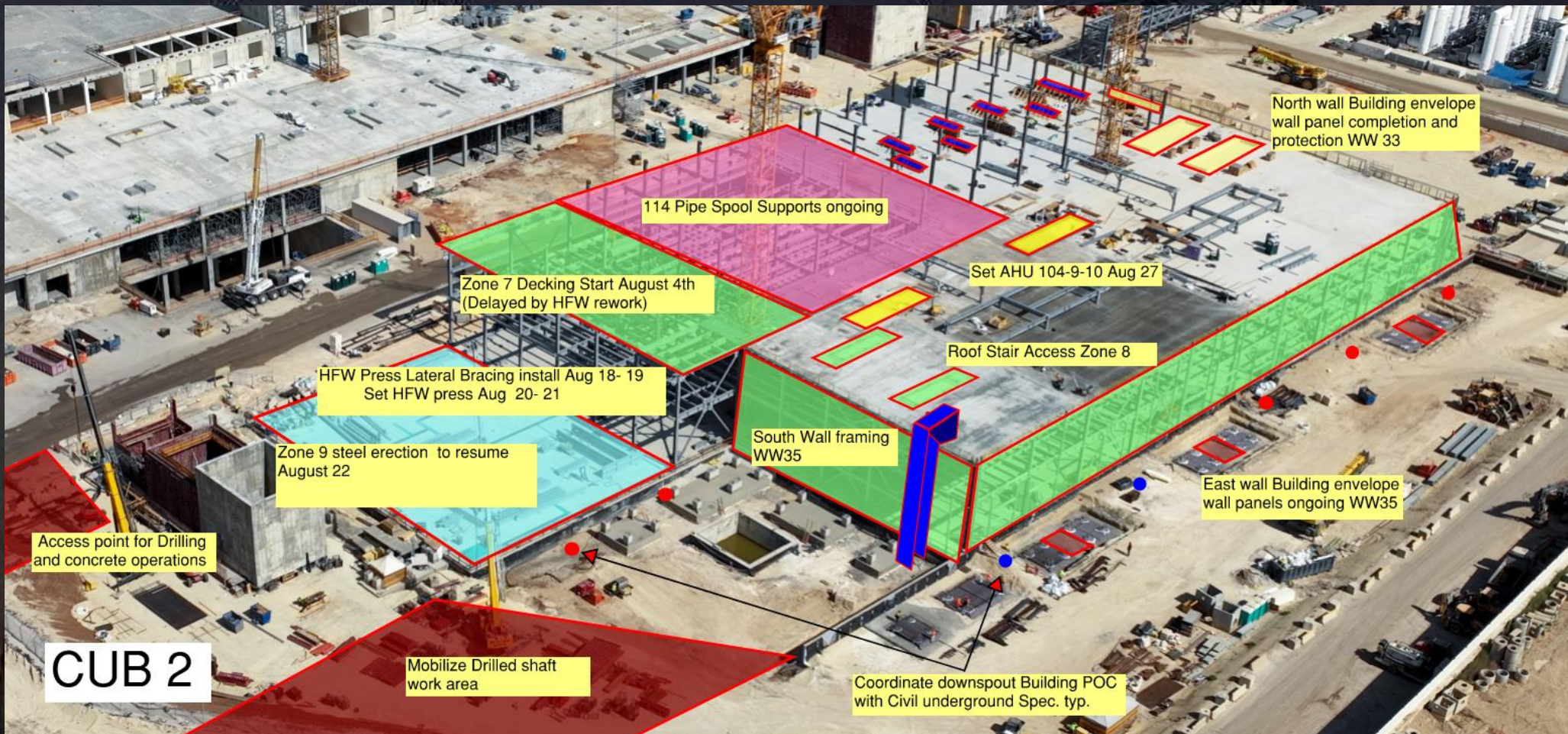


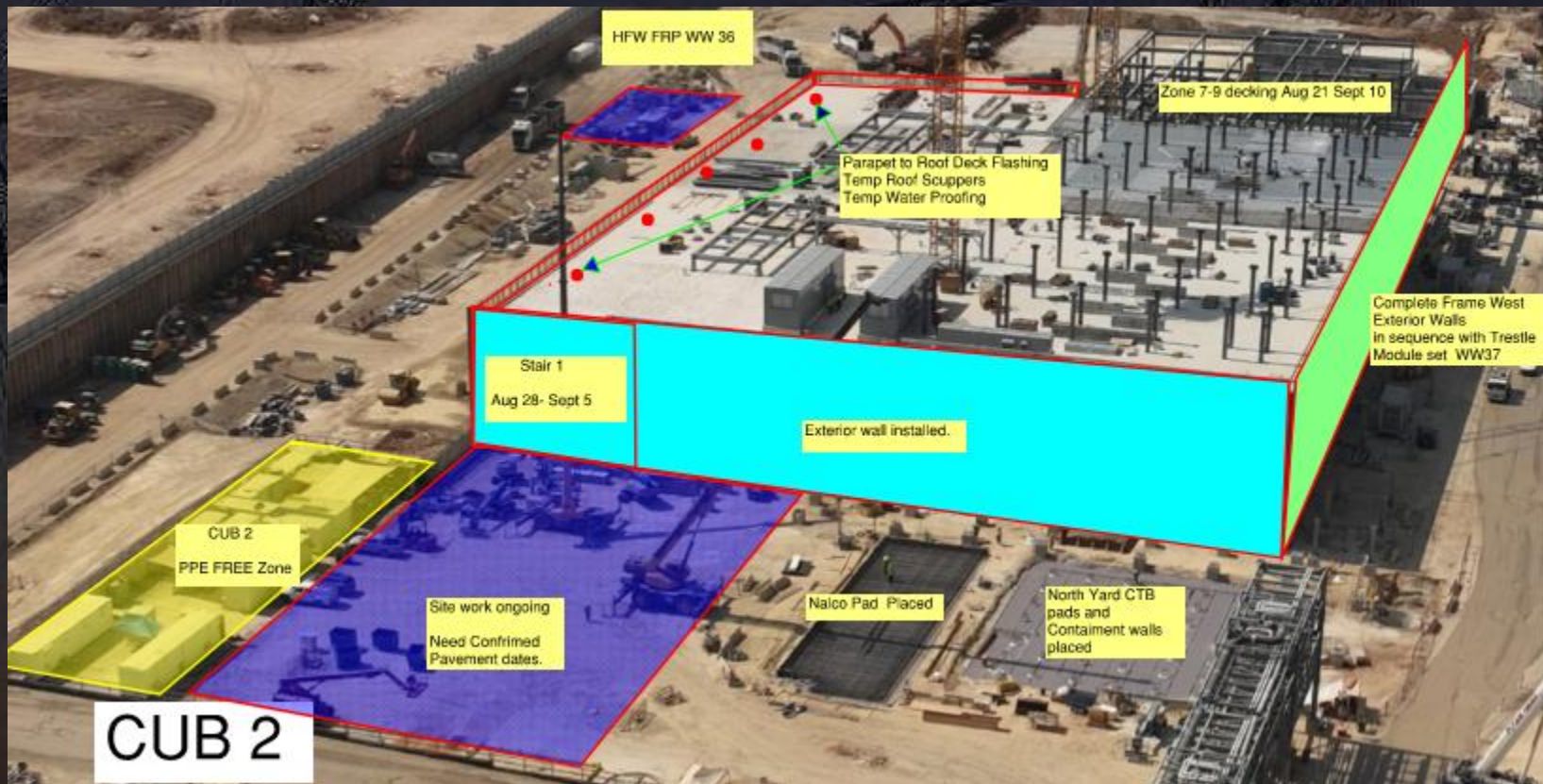
CUB 1

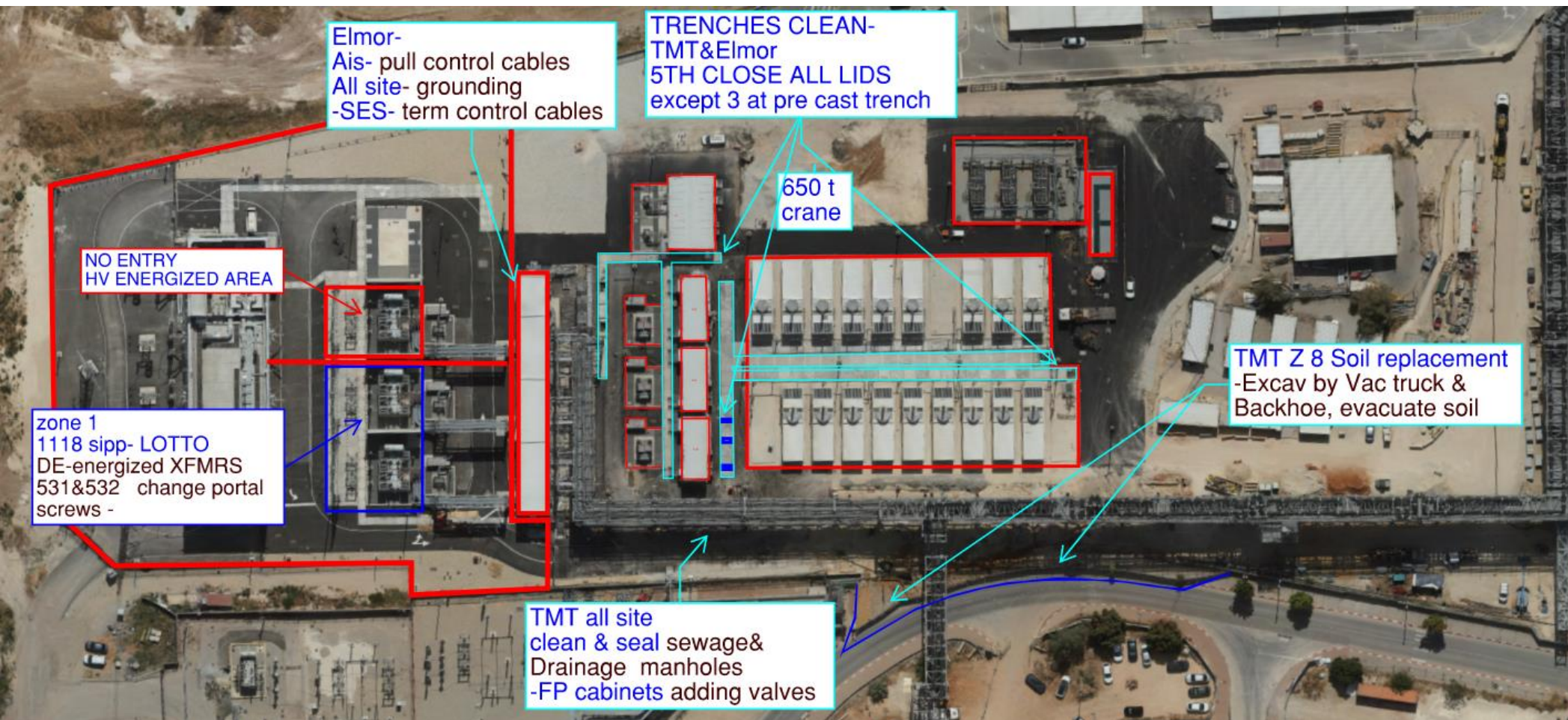




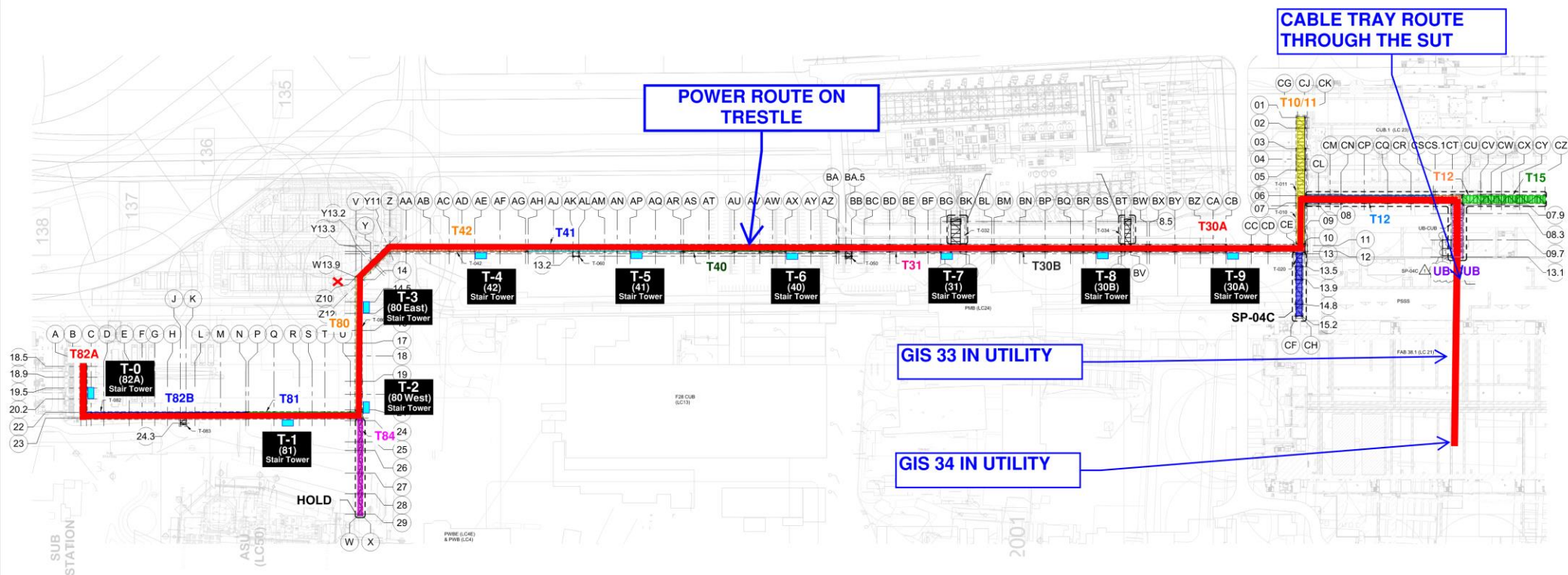








FAB GIS 33&34 PERMENENT POWER
September 8th 7:00am to 8:00am.



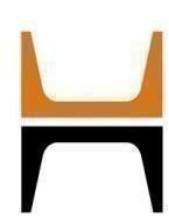


Lesico 12" natural gas pipe pressure test exclusion zone

Wednesday, September 4th 18:00 -Thursday, September 5th 01:00

All access to vehicles within exclusion zone will cut off at 17:50





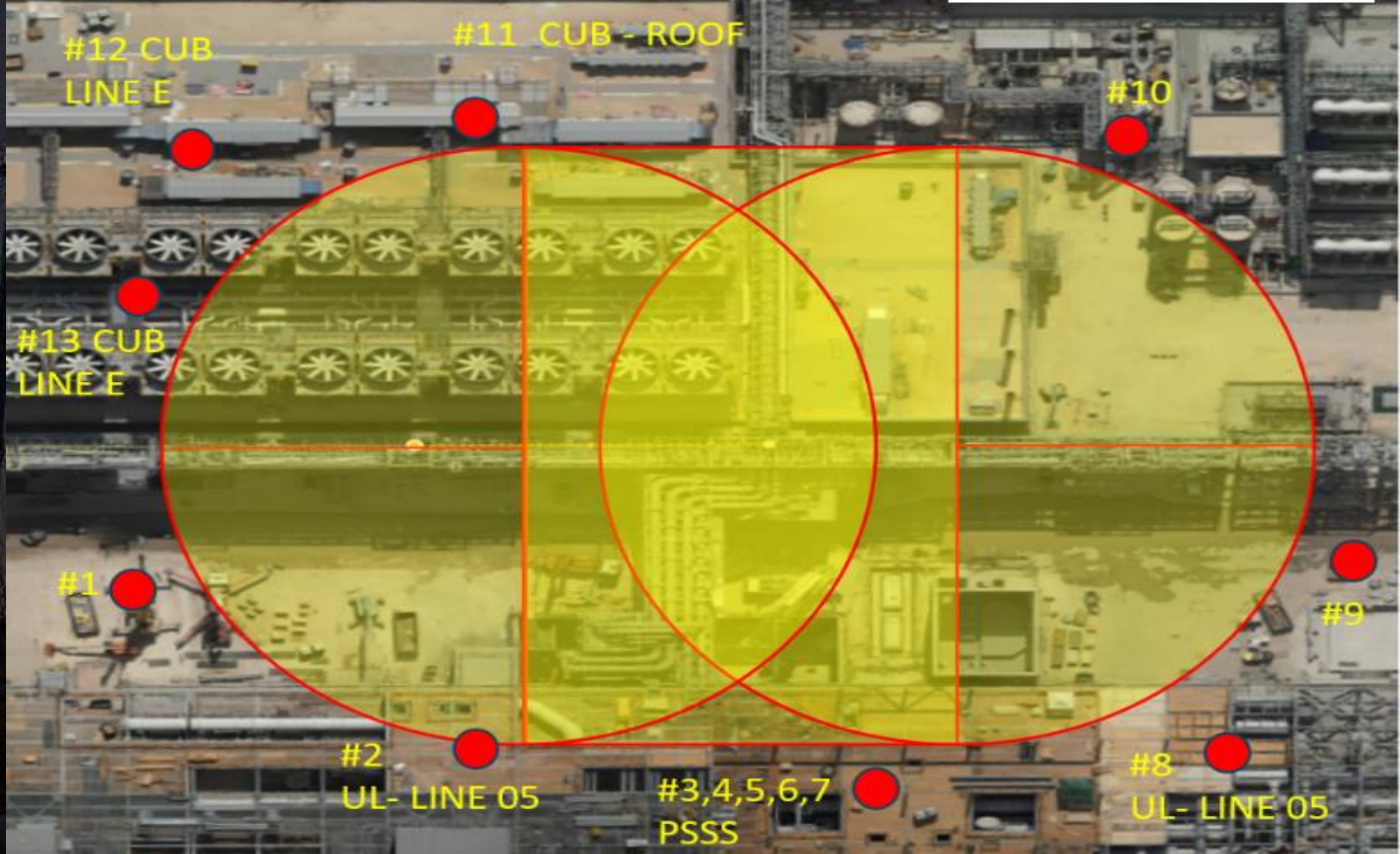
HOFFMAN CONSTRUCTION COMPANY

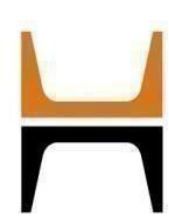


HOFFMAN
Sparrow  

Trestle Lesico NDT-10"-8" 4 welds 04/09/24

22:00-05:00





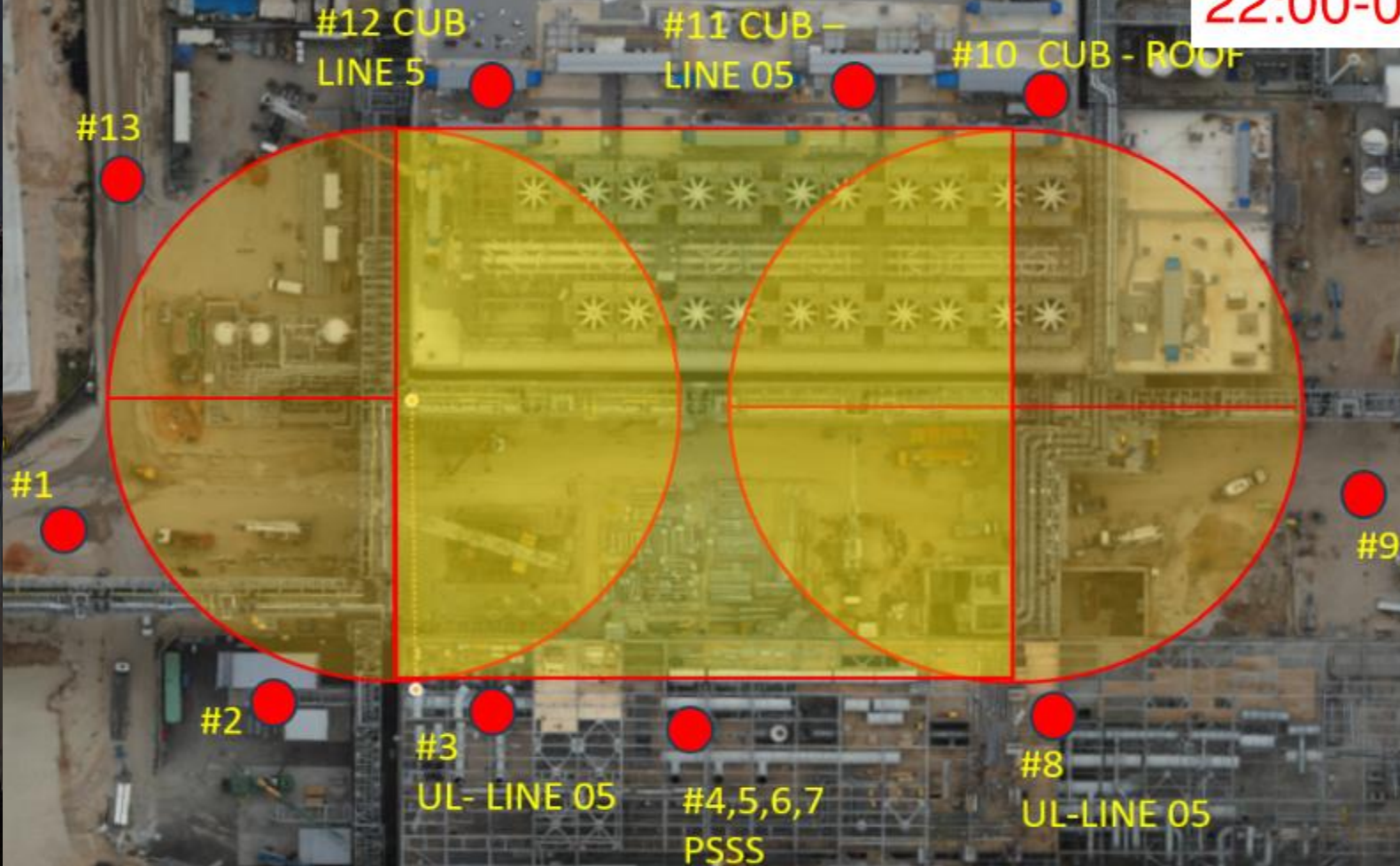
HOFFMAN CONSTRUCTION COMPANY

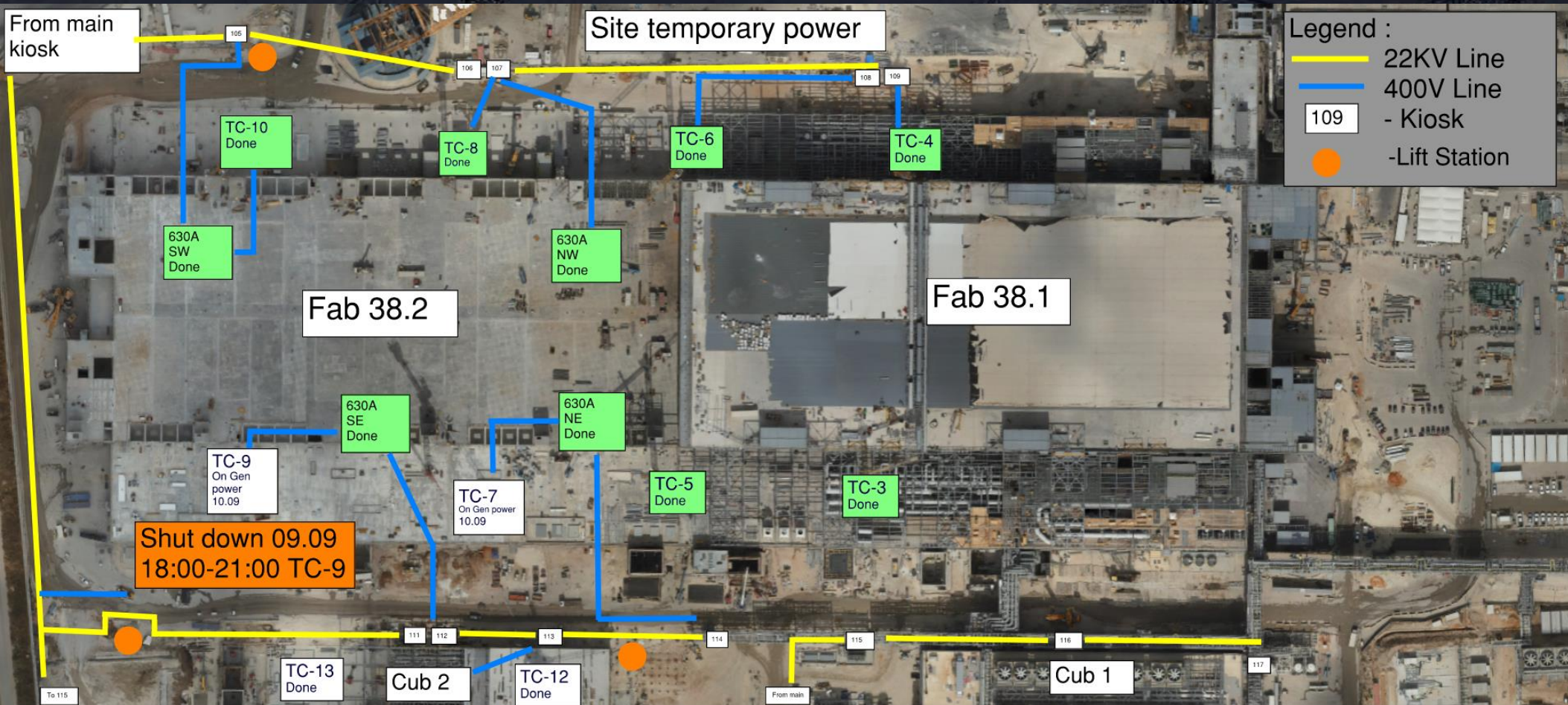


HOFFMAN
Sparrow  

Trestle Lesico NDT-10", 7 welds 05/09/24

22:00-05:00







Daily Coordination Meeting

Site Logistics
North Gate B



Daily Coordination Meeting

Site Logistics

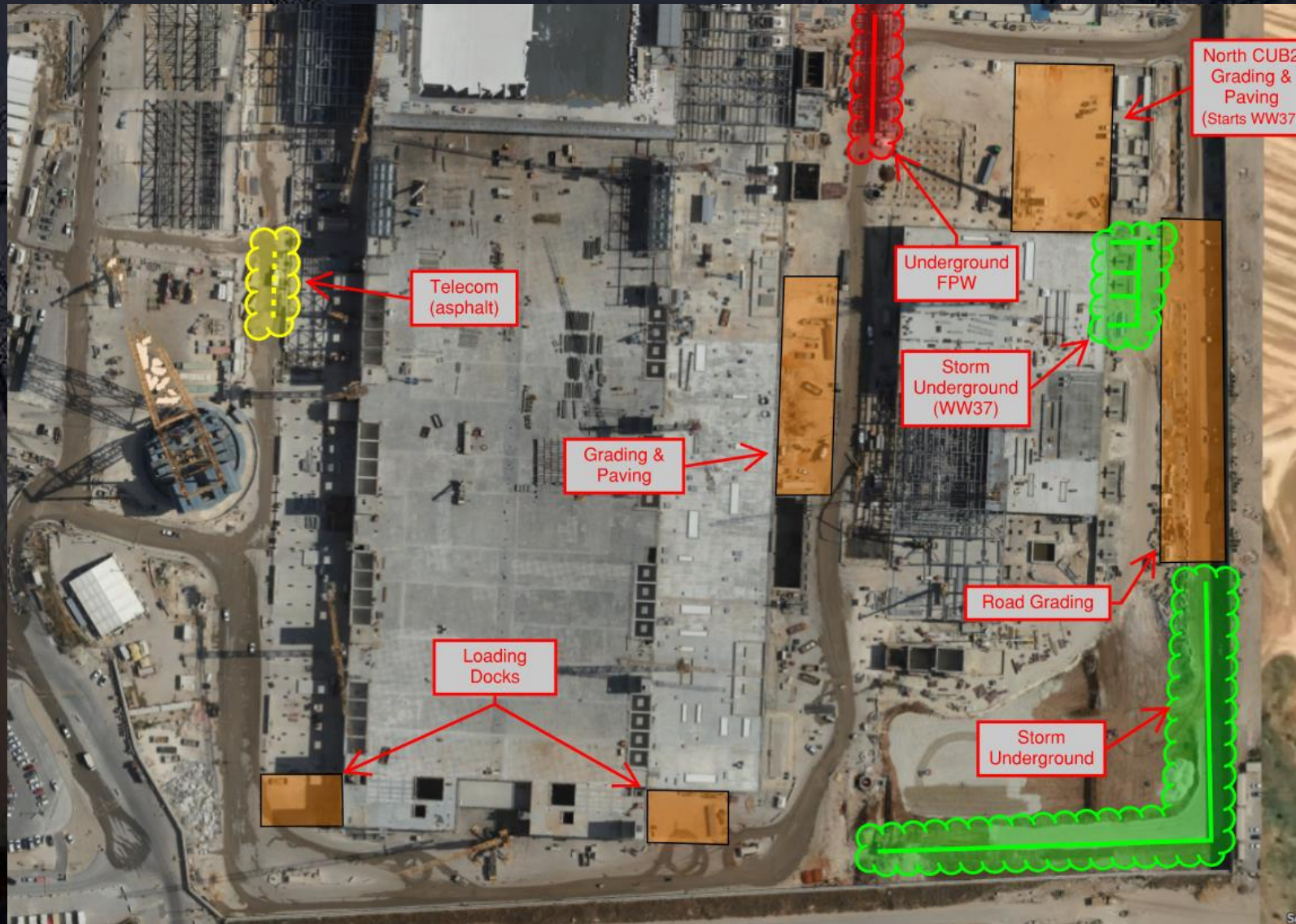
North



Daily Coordination Meeting

Site Logistics

South

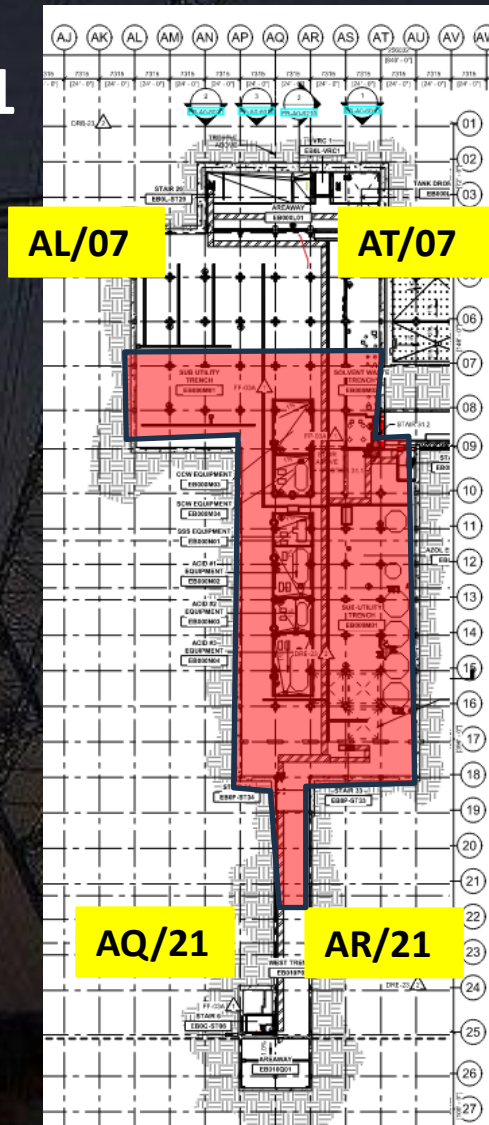




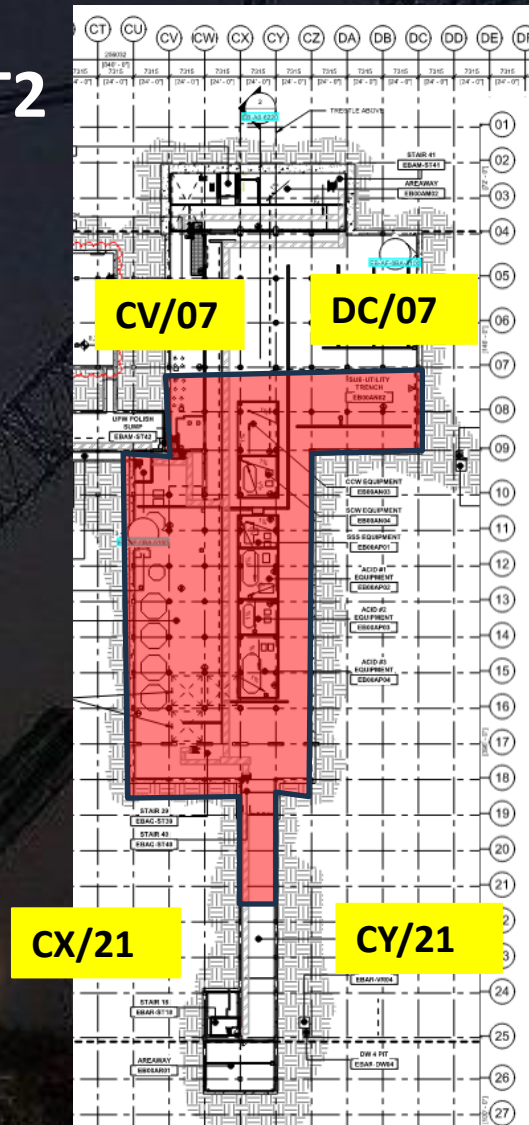
Daily Coordination Meeting

Site Logistics - Protected Areas (SUT Level)

SUT1

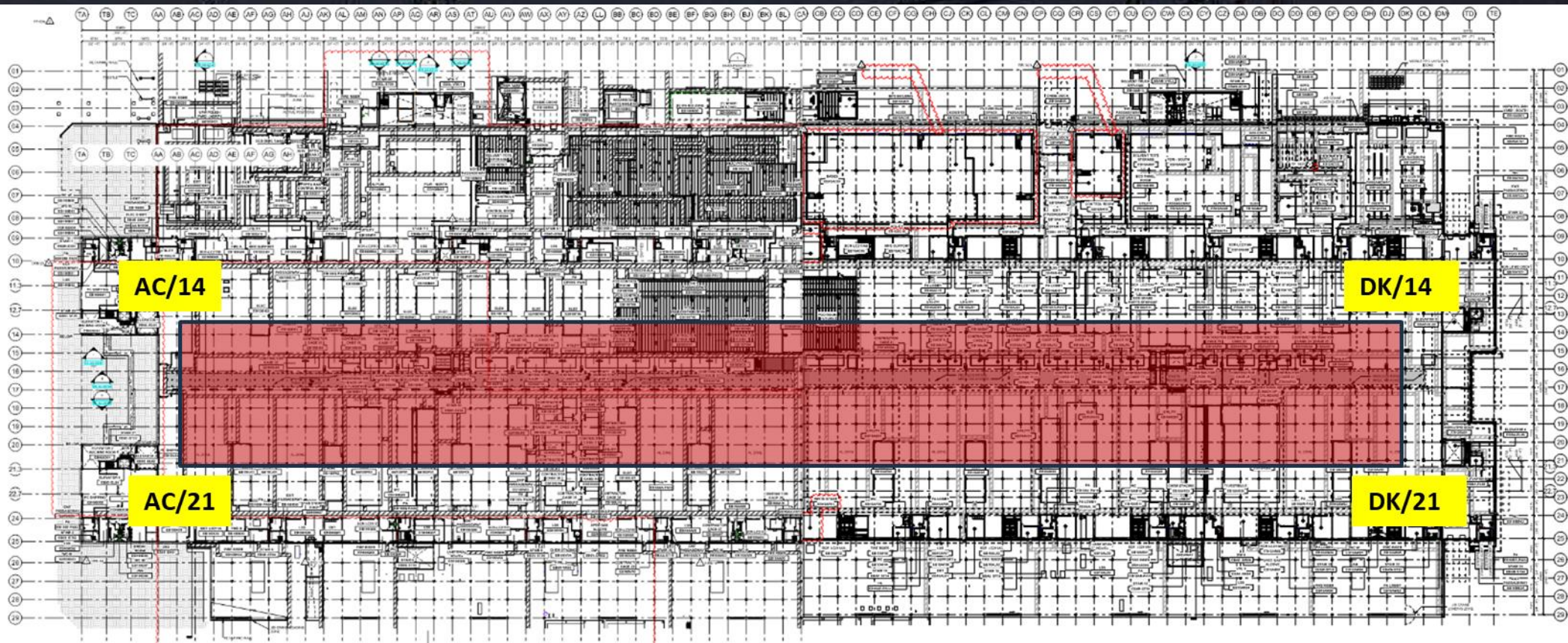


SUT2



Daily Coordination Meeting

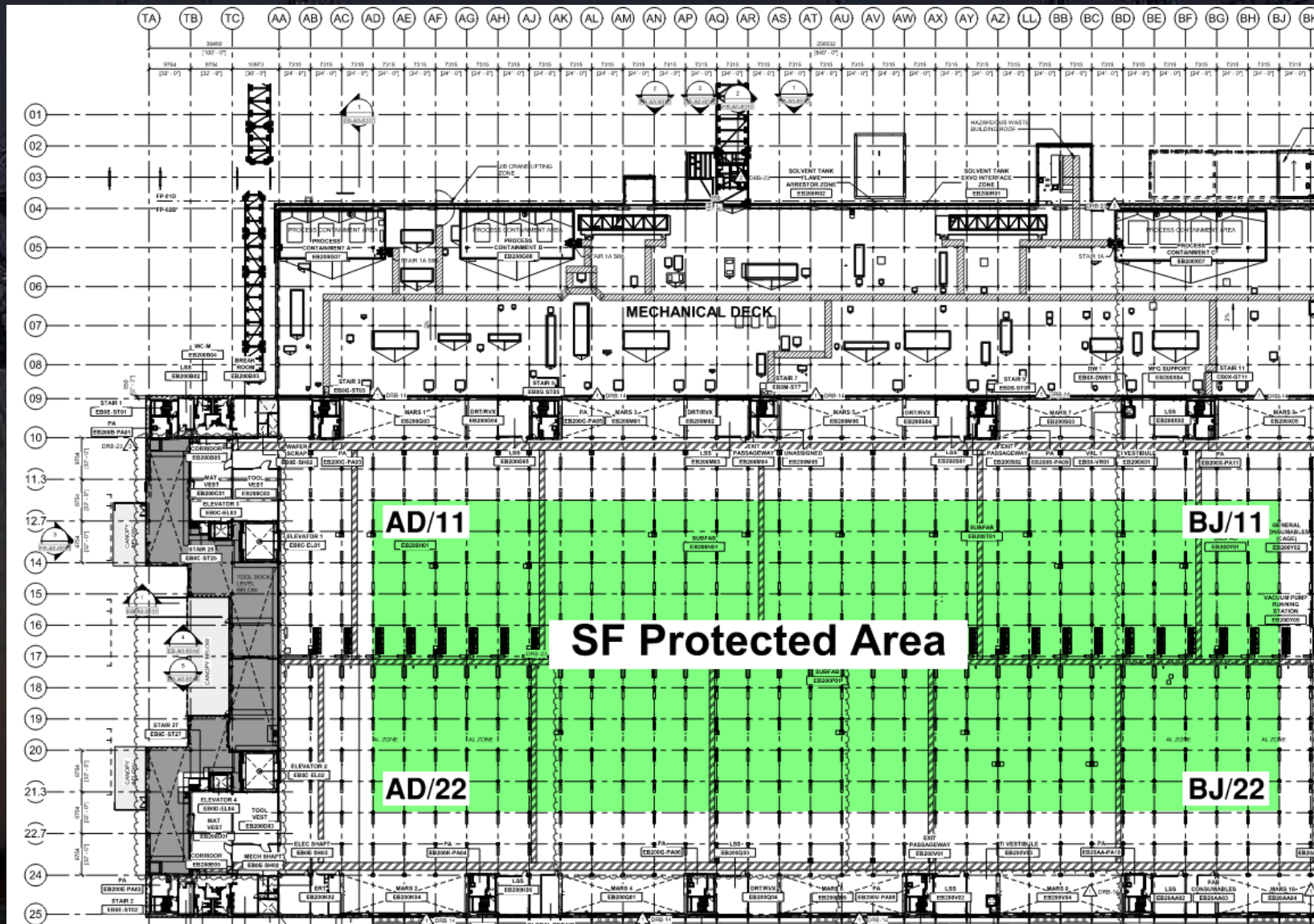
Site Logistics - Protected Areas (Utility Level)





Daily Coordination Meeting

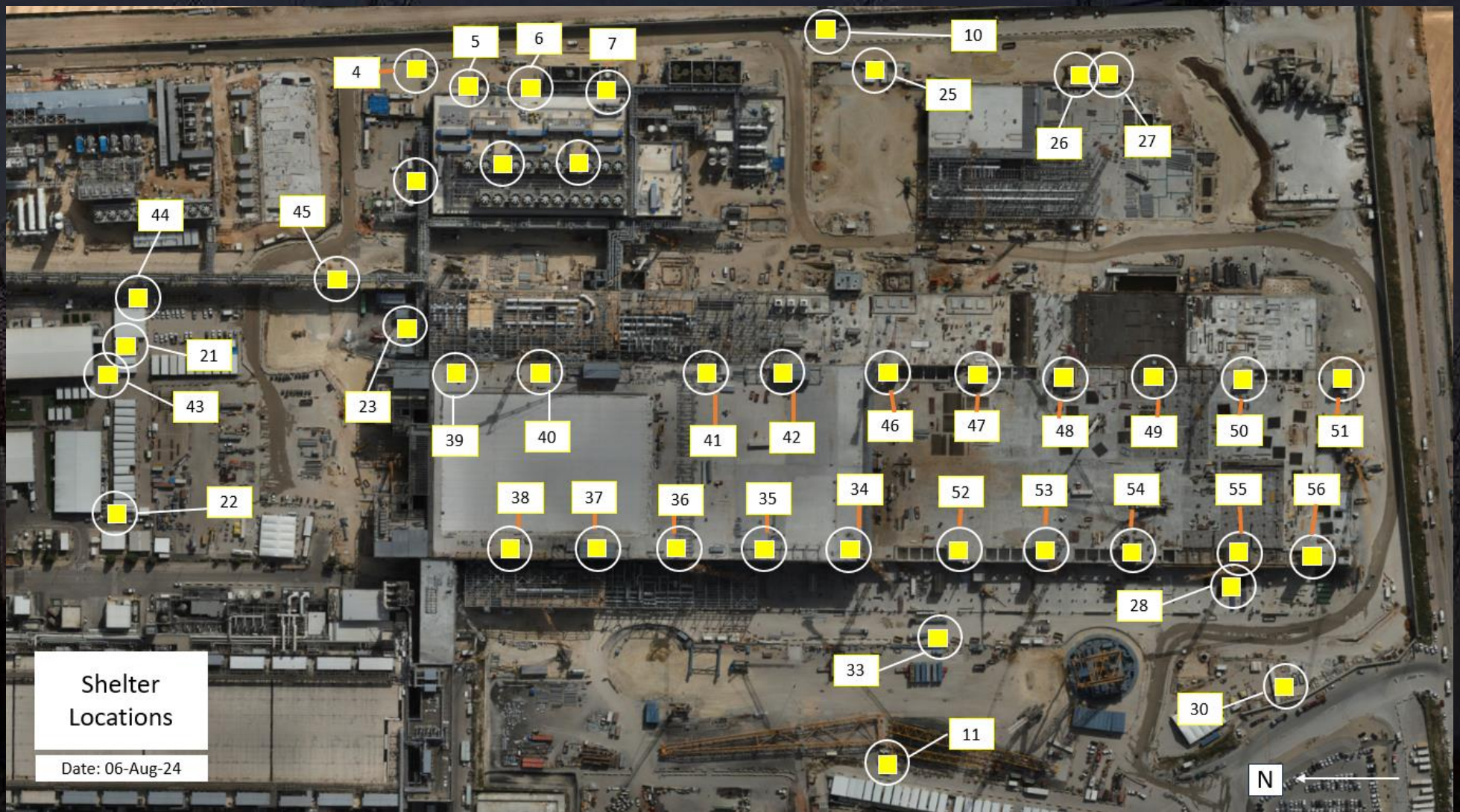
Site Logistics - Protected Areas (Subfab Level)



Daily Coordination Meeting

Site Logistics

Protected Areas



Daily Coordination Meeting

WATER BOTTLE FILLING & PERSONNEL COOLING STATIONS


BF (1) AT GIS





Barricades


- We've had a lot of improvement on barricades on site. However, with more and more activities being at heights, and work taking place in congested areas we need to continue to improve.
- Ensure all barricades have tags with phone numbers for an on site contact.
- All barricades should have gates- a part of the barricade where people (even crew members) enter through.
- Red barricades cannot be left up and need to be dismantled when the work is done unless there is approval from HCC superintendent.
- This is because we should not have red barricades up if there is not an immediate danger to life and health hazard- which we shouldn't be leaving anyway.


Heat Index- September 5th

	temperature (°F)																
	80	82	84	86	88	90	92	94	96	98	100	102	104	106	108	110	
Relative Humidity (%)	40	80	81	83	85	88	91	94	97	101	105	109	114	119	124	130	136
	45	80	82	84	87	89		96	100	104	109	114	119	124	130	137	
	50	81	83	85	88	91	95	99	103	108	113	118	124	131	137		
	55	81	84	86	89	93	97	101	106	112	117	124	130	137			
	60	82	84	88	91	95	100	105	110	116	123	129	137				
	65	82	85	89	93	98	103	108	114	121	128	136					
	70	83	86	90	95	100	105	112	119	126	134						
	75	84	88	92	97	103	109	116	124	132							
	80	84	89	94	100	106	113	121	129								
	85	85	90	96	102	110	117	126	135								
	90	86	91	98	105	113	122	131									
	95	86	93	100	108	117	127										
	100	87	95	103	112	121	132										

 Caution

 Extreme Caution

 Danger

 Extreme Danger

Extreme Caution

- Ensuring water and shaded areas available
- Acclimating workers
- Emergency planning and response
- Training workers and supervisors on the signs of heat stress and preventative measures
- Modified work schedules and/or rotating out workers
- Monitoring of workers for signs of heat stress

Daily Coordination Meeting



14:00 Sign In