

# Daily Coordination Meeting



14:00 Sign In

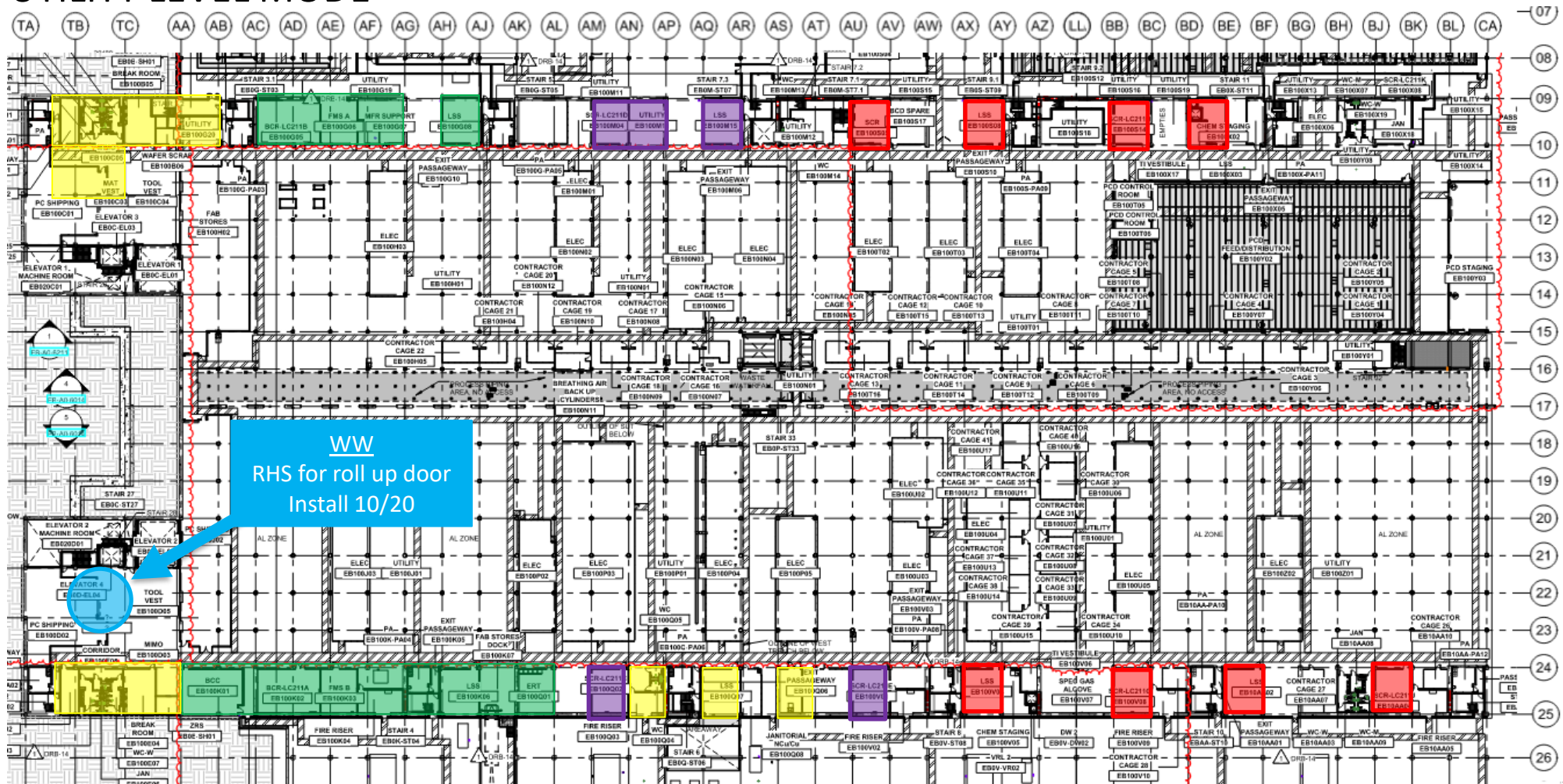
# Daily Coordination Meeting

## General Topics:

- Site is Open Tomorrow
- Site Closes at 12:00 Tomorrow
- Conduct Proper Area Assessments for Long Weekend



## UTILITY LEVEL MOD1



Pre-mold Rem dismantle  
Should be uninstll

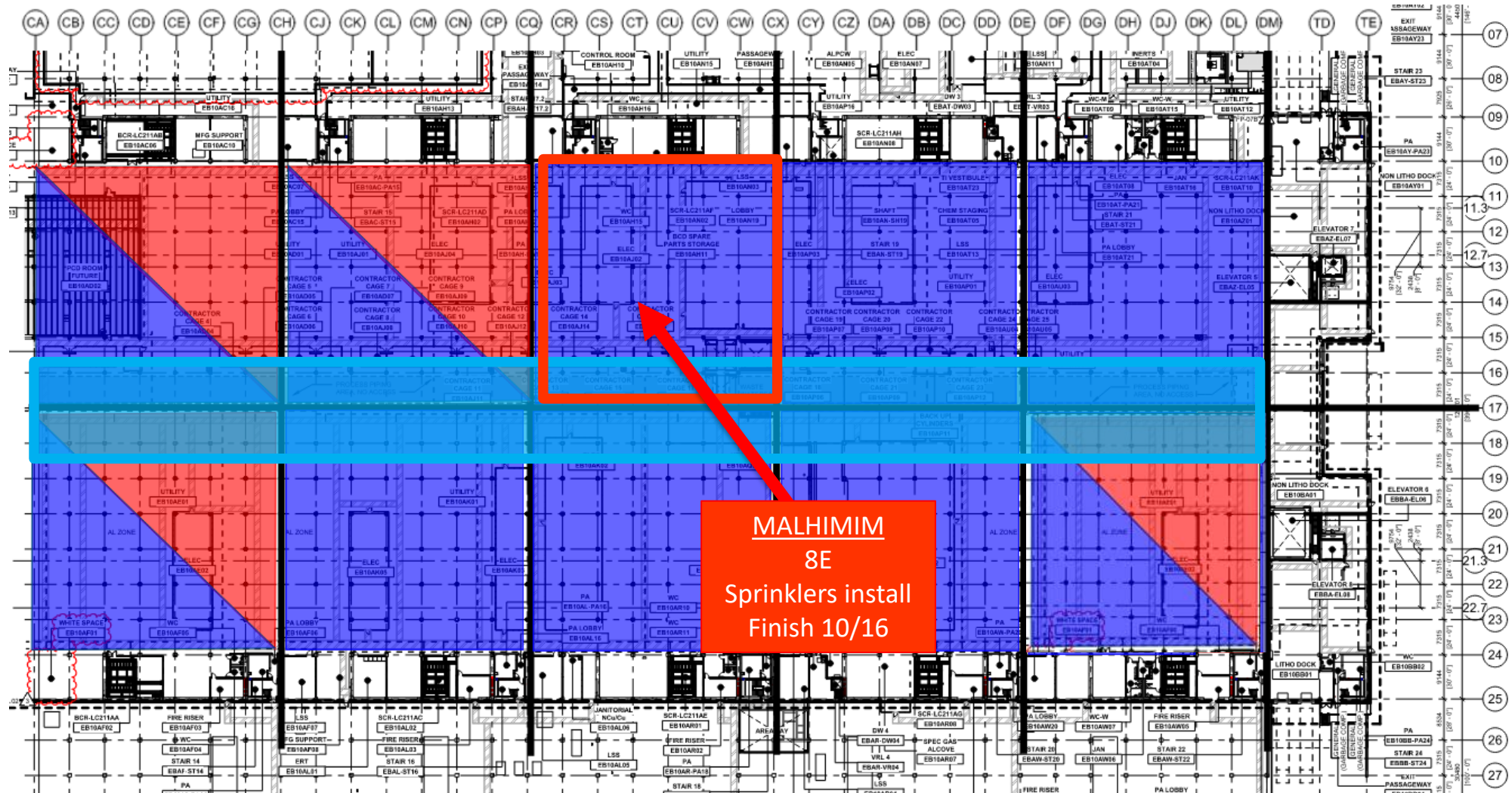
BELFOR  
Mold remediation

ELRAM  
Drywall install

MEP+Elctrical  
Ready for re-install



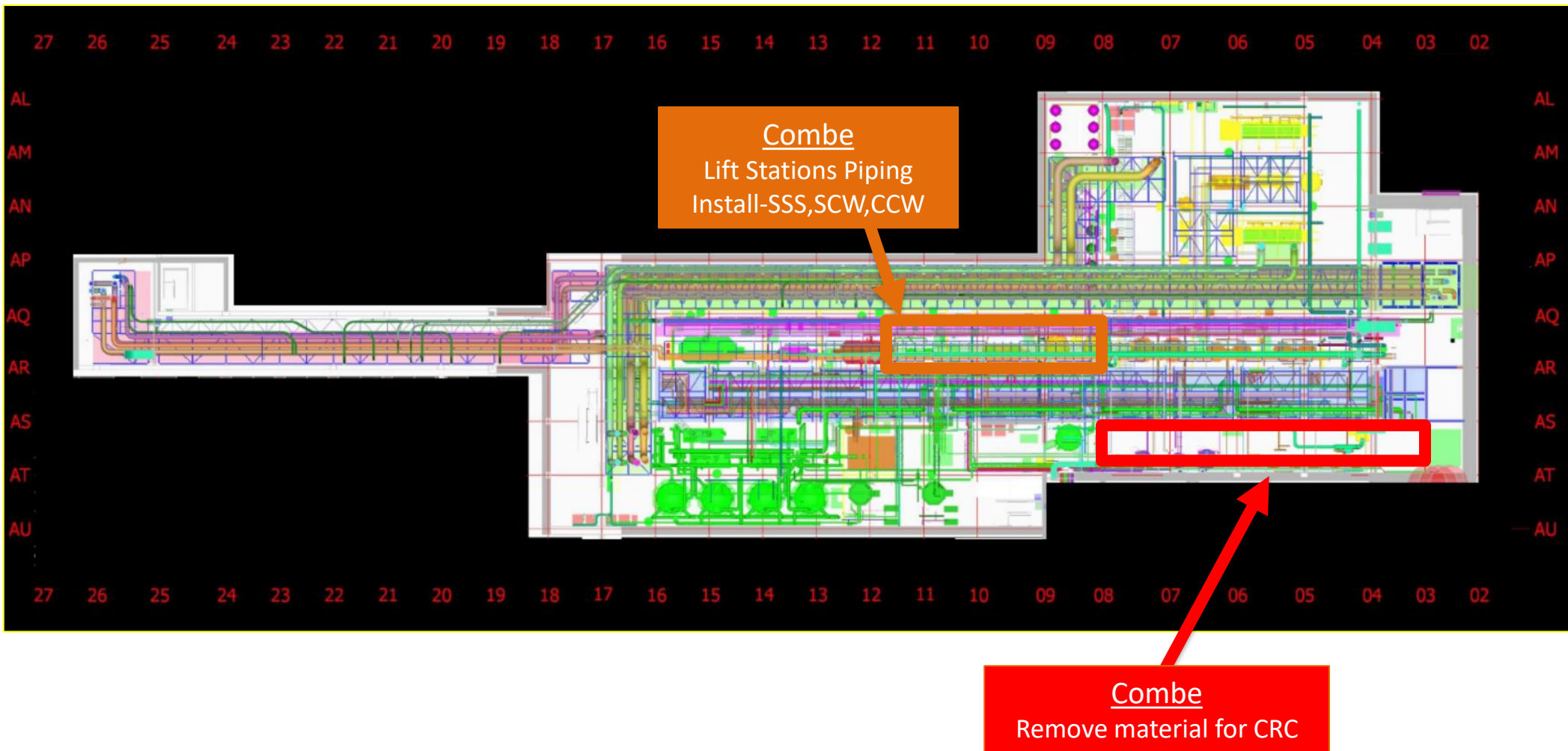
# UTILITY LEVEL MOD2





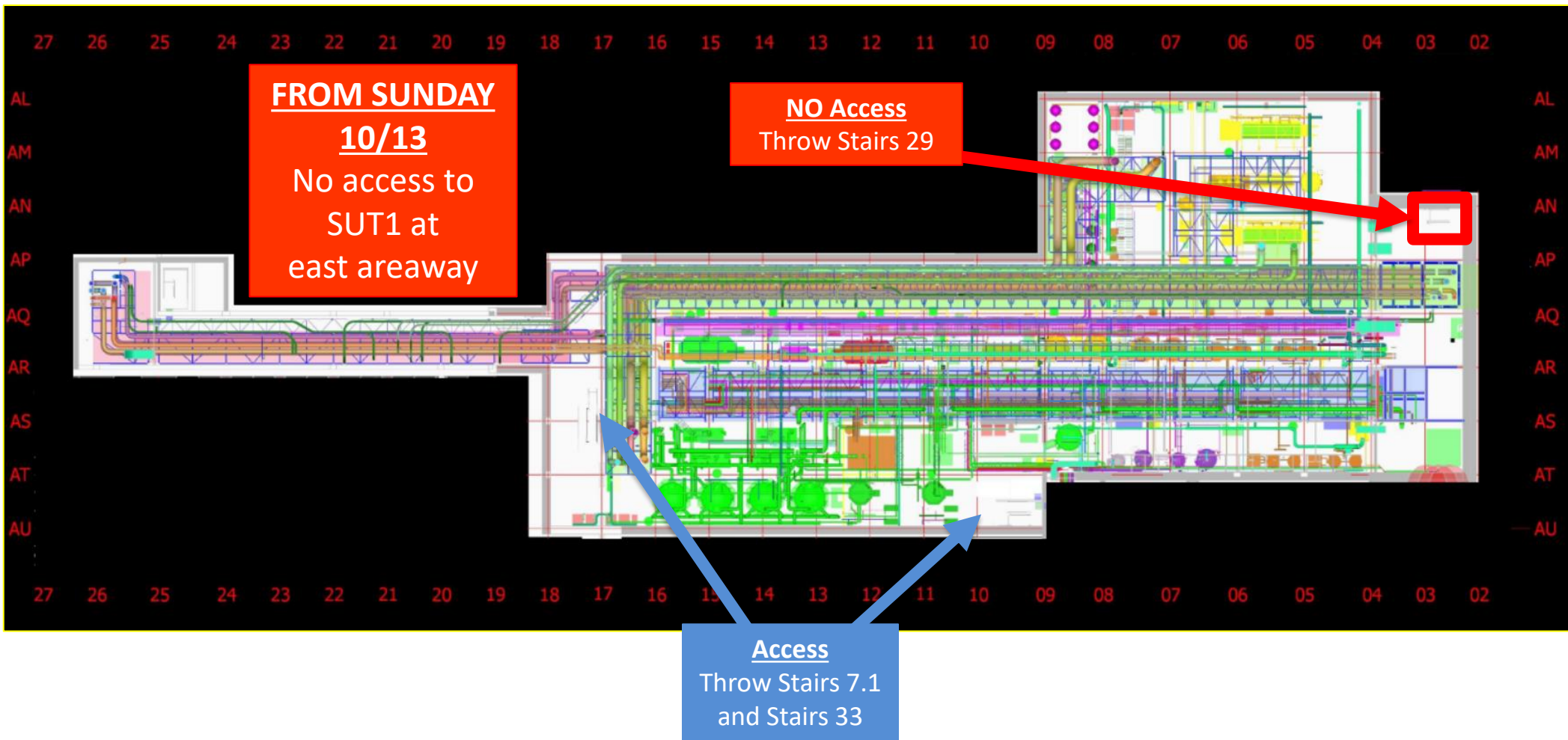


## SUT 38.1 LEVEL





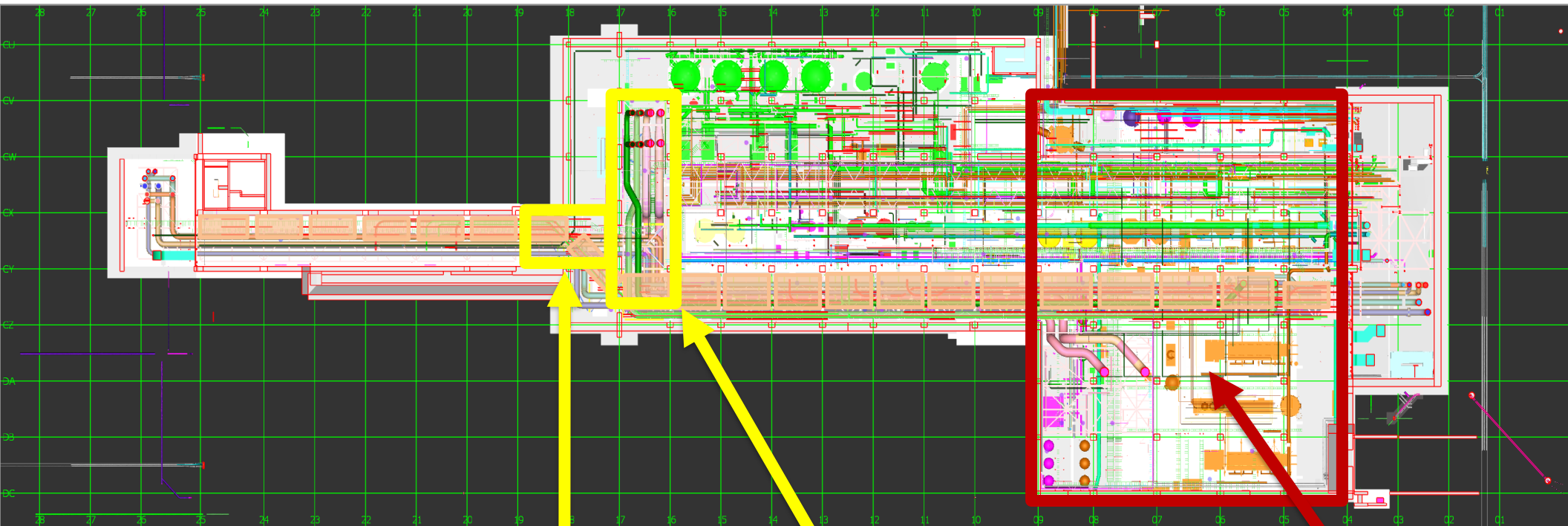
## SUT 38.1 LEVEL ACCES







## SUT 38.2 LEVEL



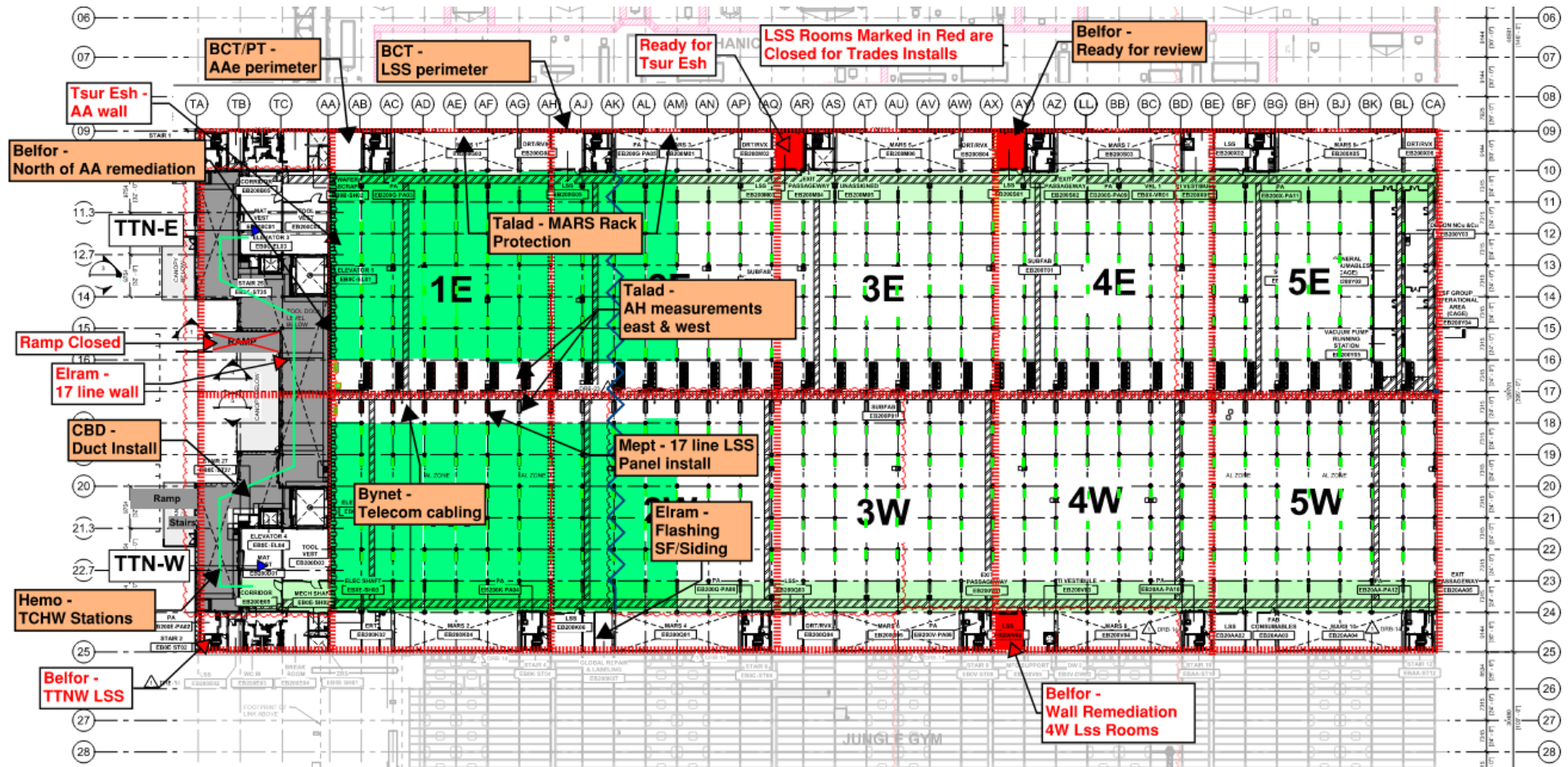
CRW  
H&T  
NEED PIPING

17-18 line  
Bore Loading

16-17 line  
lvl2+3  
bed lift: Need a  
Date

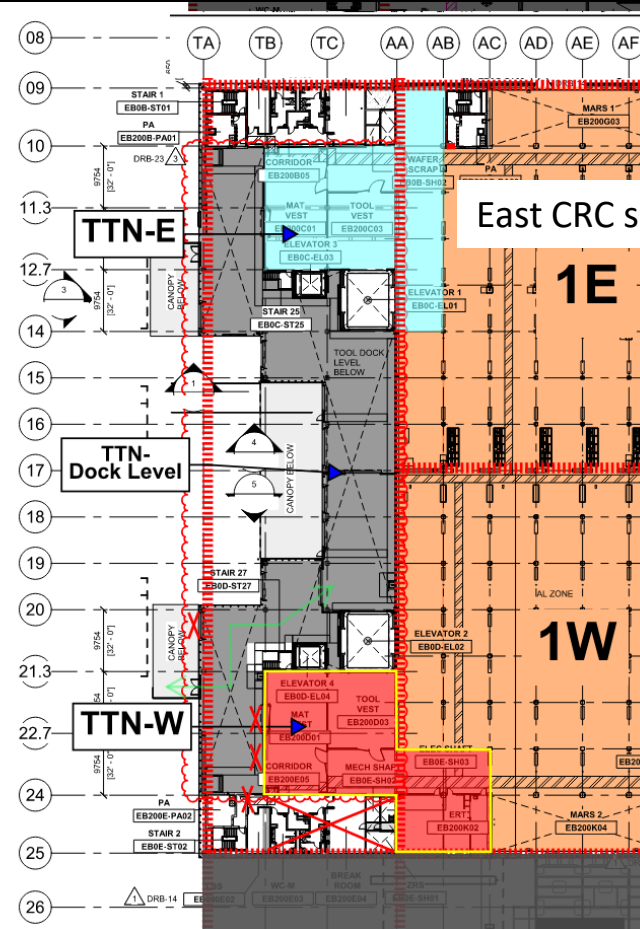
Vesda  
H&T  
Ongoing

# SUBFAB BUILDOUT MOD 1

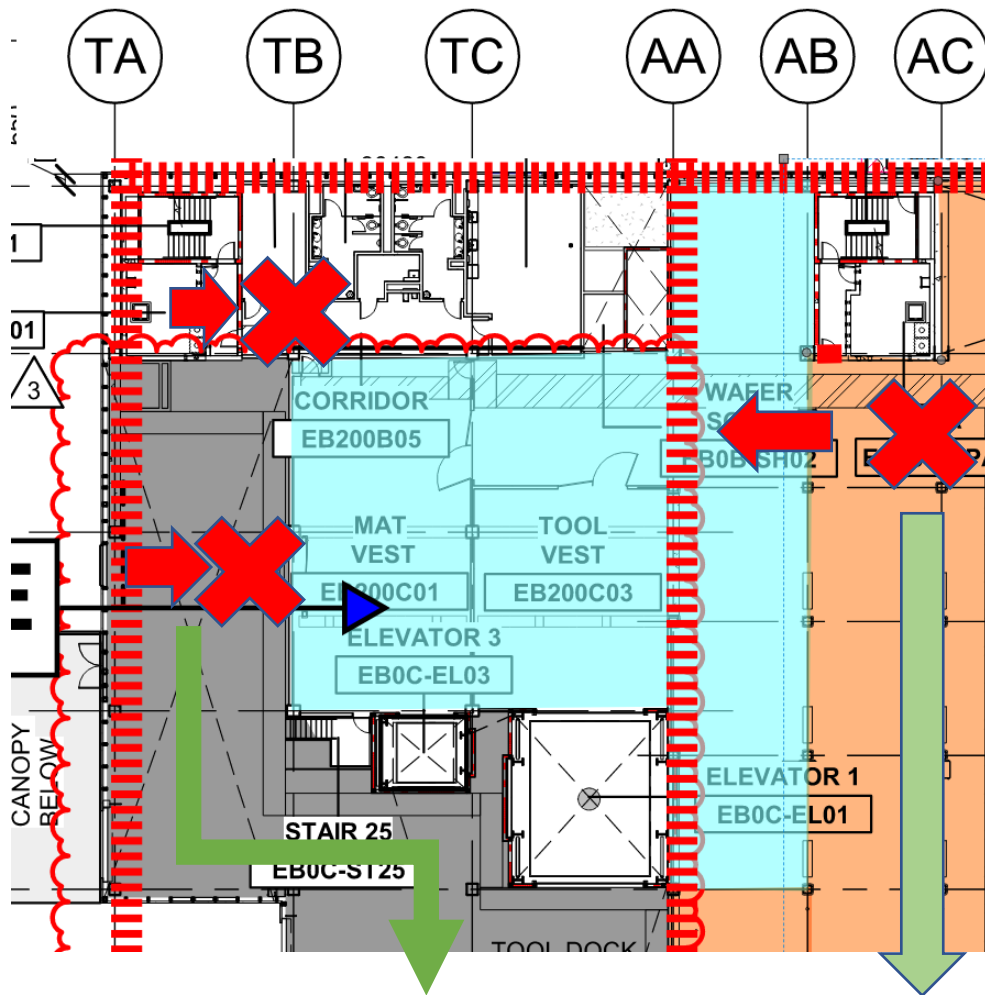




# SUBFAB CRC TOPCOAT



East CRC scheduled for 20/10



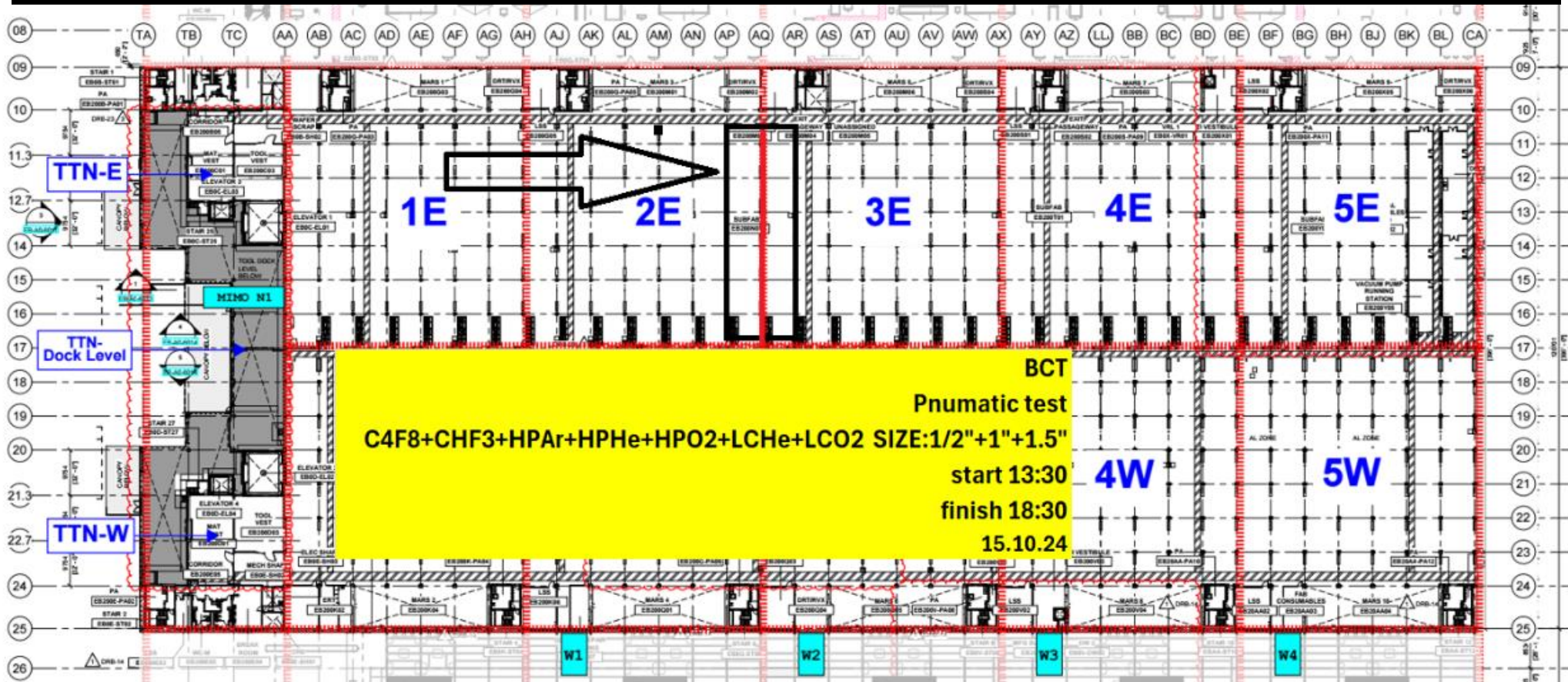
Sunday OCT 20<sup>th</sup>

CRC AAe & TTNE Upper Dock.

- Temp stairs – Access blocked.
- Stairs1 – Access blocked, SF level only.

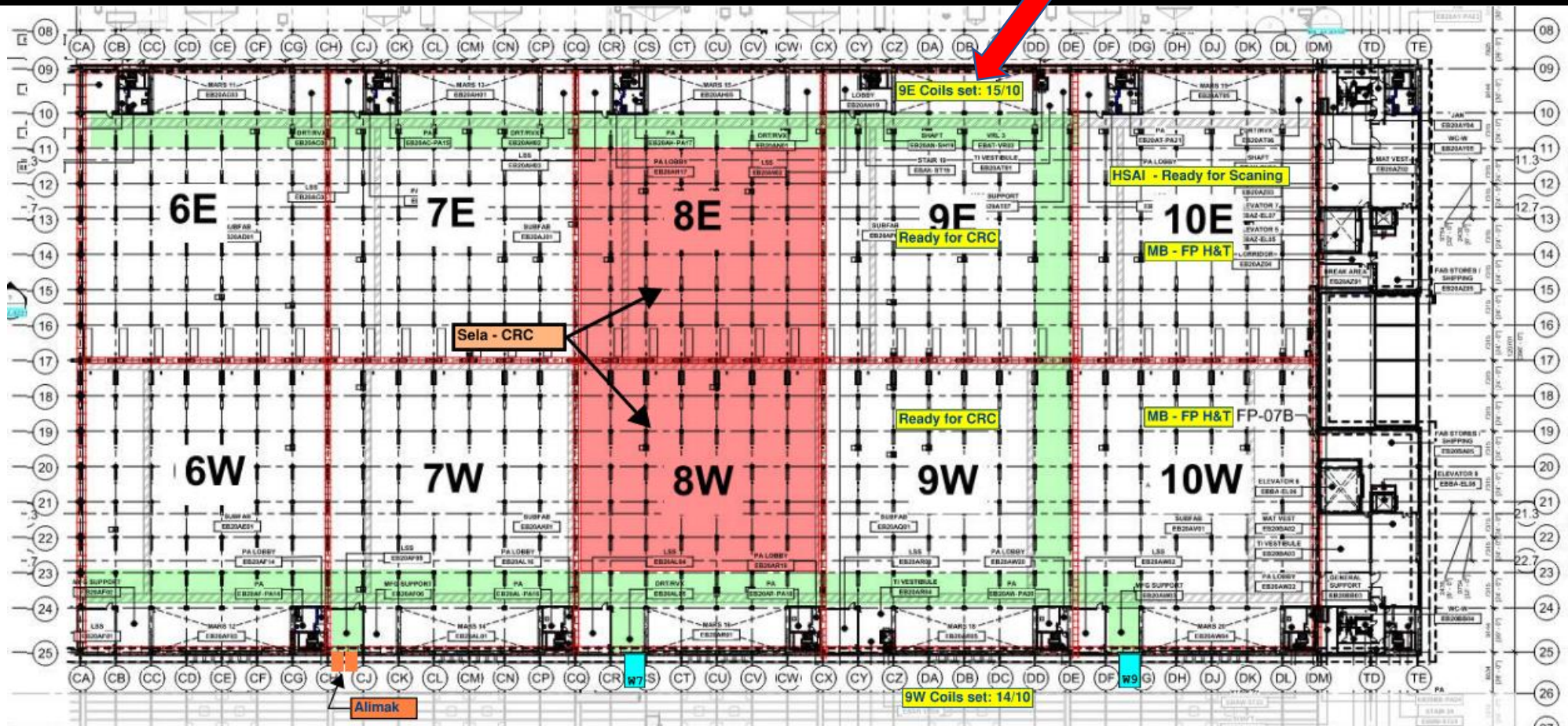


# BCT Pressure Test Exclusion Zone





# SUBFAB BUILDOUT MOD 2





# Tavas + Talent solution

## P1 cleaning 1E

- CR level:**
- Afcon** - Cable trays, modules and stickers ,2E, 2W,3E,3W,4E
  - MB**- 1W drops. 2E- 2W pipes and drops
  - Elram** - 9-10,24-25 columns/shaft walls. AA line column wraps
  - WW/JS** - 17-18 line added beams+ AS south stocker beams
  - Meptagon** - I&C 2W
  - D&P** - 5E blades install.
  - Tzur-esh** - 5E blades. 1W-1E shaft walls
  - HYG** - 5W Litho crane steel
  - PT** - Duct prep for test AA-AH east
  - Talad**- 1W 4DA holes drilling, 1W cutting around steel,17 line bracing
  - TMT** - Safety net install

**D&P blades install**

**Elram**- AA line columns+G1 wall mock-up  
**Chemo**- Hangers install  
**SN** - Beams layout

**SELA-2<sup>ND</sup> layer of primer 17 aa-ak**

**CRC AA-AK/17-23**

**Sela:CRC Done**

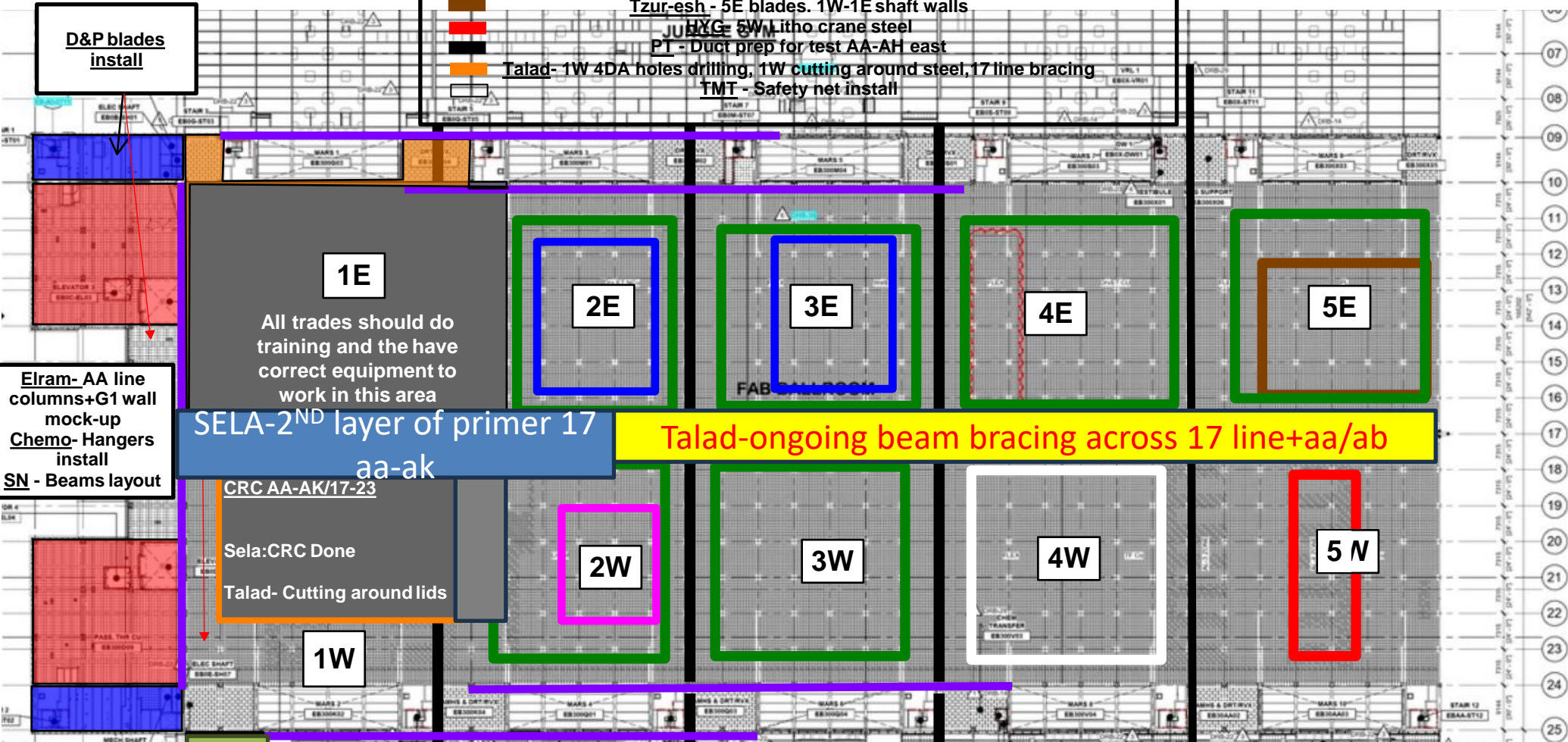
**Talad- Cutting around lids**

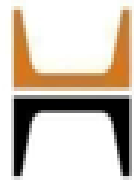
**Talad-ongoing beam bracing across 17 line+aa/ab**

**L  
I  
N  
K**

### Link

**Pach-Taas** – exhaust duct install and tie in  
**SIG**- Mobile scaffold install  
**Afcon**- Rack install  
**Newcotech**- temp wall  
**Afcon** – cable tray & racks install





ELRAM  
finishing  
columns  
wrapping  
9 line and  
tt columns

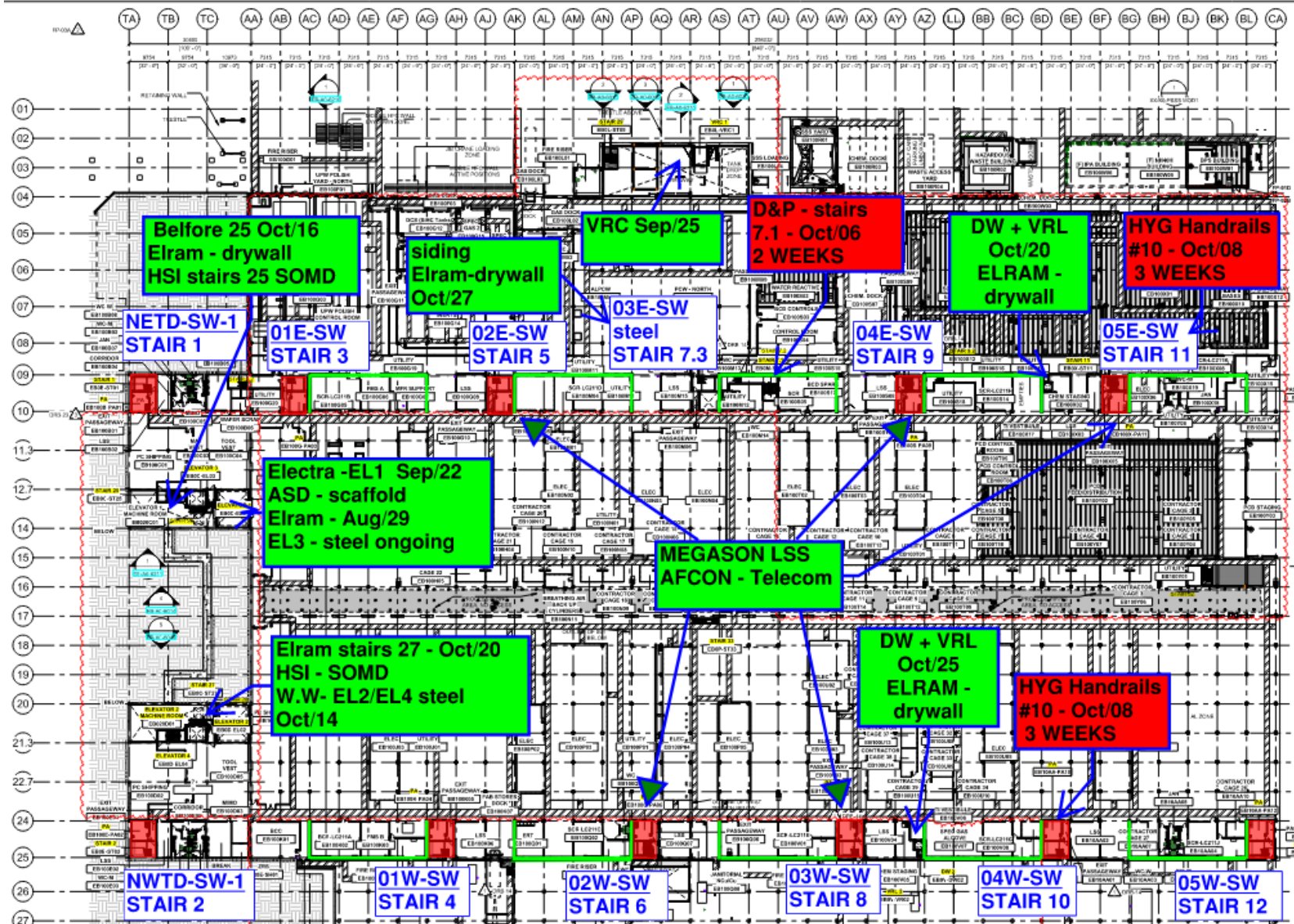
- Int. level**
- WW/SN - 2W penetrations
  - Chemo- 10" pipe racks 4E-5E . Skids set 1E-1W
  - Afcon - Cable trays, modules, cable pulling ,1W,2E,2W,3W
  - HYG - 5RA added beams 3E
  - MB- 3E,3W pipes
  - SK- IA pipes 10/24 line
  - Elram - Column wraps 9,10,24,25 lines
  - RP- FP 4DA 3E-3W,2W racks
  - Tzur-Esh - Steel paint 5E
  - Megasone - Small wires+ speakers 2W+AA line
  - SIG- Platforms 4W-5W

NTT-E 5RA level  
RP  
Tzur-esh  
Both east and west  
areas needs to be clear  
from any material

Tavas - Gross clean  
1E-1W

Nwtt-Rpc+tsur-esh  
Fire proofing and  
painting 5ra beams







Siding - West FAB - JYG

**BLOWDOWN 30%**

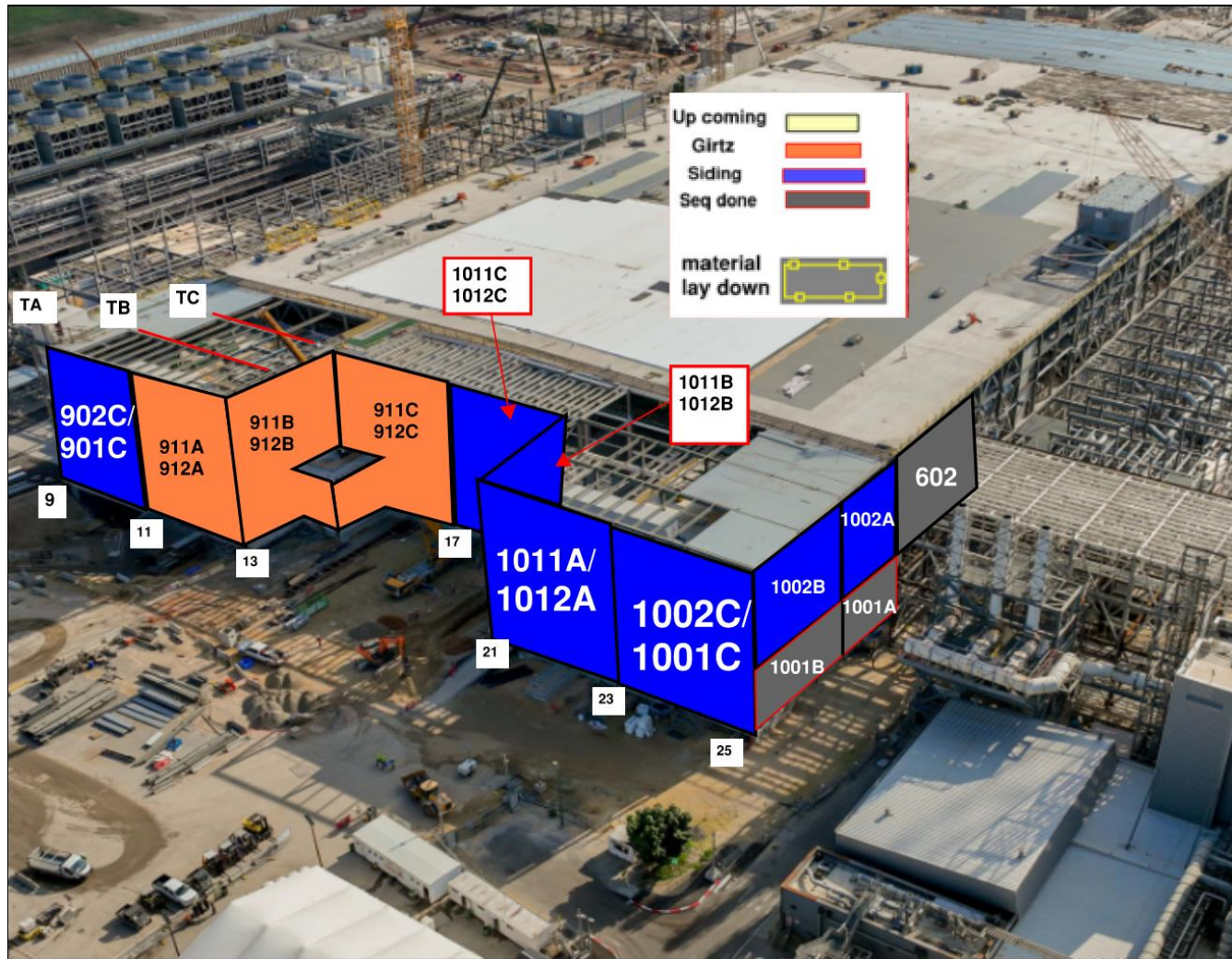
	TA	TE	TC	AA	AE	AO	AD	AE	AF	AG	AH	AJ	AK	AL	AM	AN	AP	AQ	AR	AS	AT	AU	AV	AW	AX	AY	AZ	BA	BB	BC	BD	BE	BF	BG	BH	BJ	BK	BL	CA						
	1001/1002			601/602		611/612				621/622				631/632				641/642				651/652				611/612				621/622				631/632				641/642				651/652			
Target	2A	2B	2C	6A	6B	3A	3B	3C	3D	3E	3F	3G	3H	3I	3J	3K	3L	3M	3N	3O	3P	3Q	3R	3S	3T	3U	3V	3W	3X	3Y	3Z	3A	3B	3C	3D	3E	3F	3G	3H	3I	3J	3K			
Interval	2A	2B	2C	6A	6B	3A	3B	3C	3D	3E	3F	3G	3H	3I	3J	3K	3L	3M	3N	3O	3P	3Q	3R	3S	3T	3U	3V	3W	3X	3Y	3Z	3A	3B	3C	3D	3E	3F	3G	3H	3I	3J	3K			
3K	2A	2B	2C	6A	6B	3A	3B	3C	3D	3E	3F	3G	3H	3I	3J	3K	3L	3M	3N	3O	3P	3Q	3R	3S	3T	3U	3V	3W	3X	3Y	3Z	3A	3B	3C	3D	3E	3F	3G	3H	3I	3J	3K			
3A	2A	2B	2C	6A	6B	3A	3B	3C	3D	3E	3F	3G	3H	3I	3J	3K	3L	3M	3N	3O	3P	3Q	3R	3S	3T	3U	3V	3W	3X	3Y	3Z	3A	3B	3C	3D	3E	3F	3G	3H	3I	3J	3K			
3B	2A	2B	2C	6A	6B	3A	3B	3C	3D	3E	3F	3G	3H	3I	3J	3K	3L	3M	3N	3O	3P	3Q	3R	3S	3T	3U	3V	3W	3X	3Y	3Z	3A	3B	3C	3D	3E	3F	3G	3H	3I	3J	3K			
3C	2A	2B	2C	6A	6B	3A	3B	3C	3D	3E	3F	3G	3H	3I	3J	3K	3L	3M	3N	3O	3P	3Q	3R	3S	3T	3U	3V	3W	3X	3Y	3Z	3A	3B	3C	3D	3E	3F	3G	3H	3I	3J	3K			
3D	2A	2B	2C	6A	6B	3A	3B	3C	3D	3E	3F	3G	3H	3I	3J	3K	3L	3M	3N	3O	3P	3Q	3R	3S	3T	3U	3V	3W	3X	3Y	3Z	3A	3B	3C	3D	3E	3F	3G	3H	3I	3J	3K			
3E	2A	2B	2C	6A	6B	3A	3B	3C	3D	3E	3F	3G	3H	3I	3J	3K	3L	3M	3N	3O	3P	3Q	3R	3S	3T	3U	3V	3W	3X	3Y	3Z	3A	3B	3C	3D	3E	3F	3G	3H	3I	3J	3K			
3F	2A	2B	2C	6A	6B	3A	3B	3C	3D	3E	3F	3G	3H	3I	3J	3K	3L	3M	3N	3O	3P	3Q	3R	3S	3T	3U	3V	3W	3X	3Y	3Z	3A	3B	3C	3D	3E	3F	3G	3H	3I	3J	3K			
3G	2A	2B	2C	6A	6B	3A	3B	3C	3D	3E	3F	3G	3H	3I	3J	3K	3L	3M	3N	3O	3P	3Q	3R	3S	3T	3U	3V	3W	3X	3Y	3Z	3A	3B	3C	3D	3E	3F	3G	3H	3I	3J	3K			
3H	2A	2B	2C	6A	6B	3A	3B	3C	3D	3E	3F	3G	3H	3I	3J	3K	3L	3M	3N	3O	3P	3Q	3R	3S	3T	3U	3V	3W	3X	3Y	3Z	3A	3B	3C	3D	3E	3F	3G	3H	3I	3J	3K			
3I	2A	2B	2C	6A	6B	3A	3B	3C	3D	3E	3F	3G	3H	3I	3J	3K	3L	3M	3N	3O	3P	3Q	3R	3S	3T	3U	3V	3W	3X	3Y	3Z	3A	3B	3C	3D	3E	3F	3G	3H	3I	3J	3K			
3J	2A	2B	2C	6A	6B	3A	3B	3C	3D	3E	3F	3G	3H	3I	3J	3K	3L	3M	3N	3O	3P	3Q	3R	3S	3T	3U	3V	3W	3X	3Y	3Z	3A	3B	3C	3D	3E	3F	3G	3H	3I	3J	3K			
3L	2A	2B	2C	6A	6B	3A	3B	3C	3D	3E	3F	3G	3H	3I	3J	3K	3L	3M	3N	3O	3P	3Q	3R	3S	3T	3U	3V	3W	3X	3Y	3Z	3A	3B	3C	3D	3E	3F	3G	3H	3I	3J	3K			
3M	2A	2B	2C	6A	6B	3A	3B	3C	3D	3E	3F	3G	3H	3I	3J	3K	3L	3M	3N	3O	3P	3Q	3R	3S	3T	3U	3V	3W	3X	3Y	3Z	3A	3B	3C	3D	3E	3F	3G	3H	3I	3J	3K			
3N	2A	2B	2C	6A	6B	3A	3B	3C	3D	3E	3F	3G	3H	3I	3J	3K	3L	3M	3N	3O	3P	3Q	3R	3S	3T	3U	3V	3W	3X	3Y	3Z	3A	3B	3C	3D	3E	3F	3G	3H	3I	3J	3K			
3O	2A	2B	2C	6A	6B	3A	3B	3C	3D	3E	3F	3G	3H	3I	3J	3K	3L	3M	3N	3O	3P	3Q	3R	3S	3T	3U	3V	3W	3X	3Y	3Z	3A	3B	3C	3D	3E	3F	3G	3H	3I	3J	3K			
3P	2A	2B	2C	6A	6B	3A	3B	3C	3D	3E	3F	3G	3H	3I	3J	3K	3L	3M	3N	3O	3P	3Q	3R	3S	3T	3U	3V	3W	3X	3Y	3Z	3A	3B	3C	3D	3E	3F	3G	3H	3I	3J	3K			
3Q	2A	2B	2C	6A	6B	3A	3B	3C	3D	3E	3F	3G	3H	3I	3J	3K	3L	3M	3N	3O	3P	3Q	3R	3S	3T	3U	3V	3W	3X	3Y	3Z	3A	3B	3C	3D	3E	3F	3G	3H	3I	3J	3K			
3R	2A	2B	2C	6A	6B	3A	3B	3C	3D	3E	3F	3G	3H	3I	3J	3K	3L	3M	3N	3O	3P	3Q	3R	3S	3T	3U	3V	3W	3X	3Y	3Z	3A	3B	3C	3D	3E	3F	3G	3H	3I	3J	3K			
3S	2A	2B	2C	6A	6B	3A	3B	3C	3D	3E	3F	3G	3H	3I	3J	3K	3L	3M	3N	3O	3P	3Q	3R	3S	3T	3U	3V	3W	3X	3Y	3Z	3A	3B	3C	3D	3E	3F	3G	3H	3I	3J	3K			
3T	2A	2B	2C	6A	6B	3A	3B	3C	3D	3E	3F	3G	3H	3I	3J	3K	3L	3M	3N	3O	3P	3Q	3R	3S	3T	3U	3V	3W	3X	3Y	3Z	3A	3B	3C	3D	3E	3F	3G	3H	3I	3J	3K			
3U	2A	2B	2C	6A	6B	3A	3B	3C	3D	3E	3F	3G	3H	3I	3J	3K	3L	3M	3N	3O	3P	3Q	3R	3S	3T	3U	3V	3W	3X	3Y	3Z	3A	3B	3C	3D	3E	3F	3G	3H	3I	3J	3K			
3V	2A	2B	2C	6A	6B	3A	3B	3C	3D	3E	3F	3G	3H	3I	3J	3K	3L	3M	3N	3O	3P	3Q	3R	3S	3T	3U	3V	3W	3X	3Y	3Z	3A	3B	3C	3D	3E	3F	3G	3H	3I	3J	3K			
3W	2A	2B	2C	6A	6B	3A	3B	3C	3D	3E	3F	3G	3H	3I	3J	3K	3L	3M	3N	3O	3P	3Q	3R	3S	3T	3U	3V	3W	3X	3Y	3Z	3A	3B	3C	3D	3E	3F	3G	3H	3I	3J	3K			
3X	2A	2B	2C	6A	6B	3A	3B	3C	3D	3E	3F	3G	3H	3I	3J	3K	3L	3M	3N	3O	3P	3Q	3R	3S	3T	3U	3V	3W	3X	3Y	3Z	3A	3B	3C	3D	3E	3F	3G	3H	3I	3J	3K			
3Y	2A	2B	2C	6A	6B	3A	3B	3C	3D	3E	3F	3G	3H	3I	3J	3K	3L	3M	3N	3O	3P	3Q	3R	3S	3T	3U	3V	3W	3X	3Y	3Z	3A	3B	3C	3D	3E	3F	3G	3H	3I	3J	3K			
3Z	2A	2B	2C	6A	6B	3A	3B	3C	3D	3E	3F	3G	3H	3I	3J	3K	3L	3M	3N	3O	3P	3Q	3R	3S	3T	3U	3V	3W	3X	3Y	3Z	3A	3B	3C	3D	3E	3F	3G	3H	3I	3J	3K			
3AA	2A	2B	2C	6A	6B	3A	3B	3C	3D	3E	3F	3G	3H	3I	3J	3K	3L	3M	3N	3O	3P	3Q	3R	3S	3T	3U	3V	3W	3X	3Y	3Z	3A	3B	3C	3D	3E	3F	3G	3H	3I	3J	3K			
3AB	2A	2B	2C	6A	6B	3A	3B	3C	3D	3E	3F	3G	3H	3I	3J	3K	3L	3M	3N	3O	3P	3Q	3R	3S	3T	3U	3V	3W	3X	3Y	3Z	3A	3B	3C	3D	3E	3F	3G	3H	3I	3J	3K			
3AC	2A	2B	2C	6A	6B	3A	3B	3C	3D	3E	3F	3G	3H	3I	3J	3K	3L	3M	3N	3O	3P	3Q	3R	3S	3T	3U	3V	3W	3X	3Y	3Z	3A	3B	3C	3D	3E	3F	3G	3H	3I	3J	3K			
3AD	2A	2B	2C	6A	6B	3A	3B	3C	3D	3E	3F	3G	3H	3I	3J	3K	3L	3M	3N	3O	3P	3Q	3R	3S	3T	3U	3V	3W	3X	3Y	3Z	3A	3B	3C	3D	3E	3F	3G	3H	3I	3J	3K			
3AE	2A	2B	2C	6A	6B	3A	3B	3C	3D	3E	3F	3G	3H	3I	3J	3K	3L	3M	3N	3O	3P	3Q	3R	3S	3T	3U	3V	3W	3X	3Y	3Z	3A	3B	3C	3D	3E	3F	3G	3H	3I	3J	3K			
3AF	2A	2B	2C	6A	6B	3A	3B	3C	3D	3E	3F	3G	3H	3I	3J	3K	3L	3M	3N	3O	3P	3Q	3R	3S	3T	3U	3V	3W	3X	3Y	3Z	3A	3B	3C	3D	3E	3F	3G	3H	3I	3J	3K			
3AG	2A	2B	2C	6A	6B	3A	3B	3C	3D	3E	3F	3G	3H	3I	3J	3K	3L	3M	3N	3O	3P	3Q	3R	3S	3T	3U	3V	3W	3X	3Y	3Z	3A	3B	3C	3D	3E	3F	3G	3H	3I	3J	3K			
3AH	2A	2B	2C	6A	6B	3A	3B	3C	3D	3E	3F	3G	3H	3I	3J	3K	3L	3M	3N	3O	3P	3Q	3R	3S	3T	3U	3V	3W	3X	3Y	3Z	3A	3B	3C	3D	3E	3F	3G	3H	3I	3J	3K			
3AI	2A	2B	2C	6A	6B	3A	3B	3C	3D	3E	3F	3G	3H	3I	3J	3K	3L	3M	3N	3O	3P	3Q	3R	3S	3T	3U	3V	3W	3X	3Y	3Z	3A	3B	3C	3D	3E	3F	3G	3H	3I	3J	3K			
3AJ	2A	2B	2C	6A	6B	3A	3B	3C	3D	3E	3F	3G	3H	3I	3J	3K	3L	3M	3N	3O	3P	3Q	3R	3S	3T	3U	3V	3W	3X	3Y	3Z	3A	3B	3C	3D	3E	3F	3G	3H	3I	3J	3K			
3AK	2A	2B	2C	6A	6B	3A	3B	3C	3D	3E	3F	3G	3H	3I	3J	3K	3L	3M	3N	3O	3P	3Q	3R	3S	3T	3U	3V	3W	3X	3Y	3Z	3A	3B	3C	3D	3E	3F	3G	3H	3I	3J	3K			
3AL	2A	2B	2C	6A	6B	3A	3B																																						

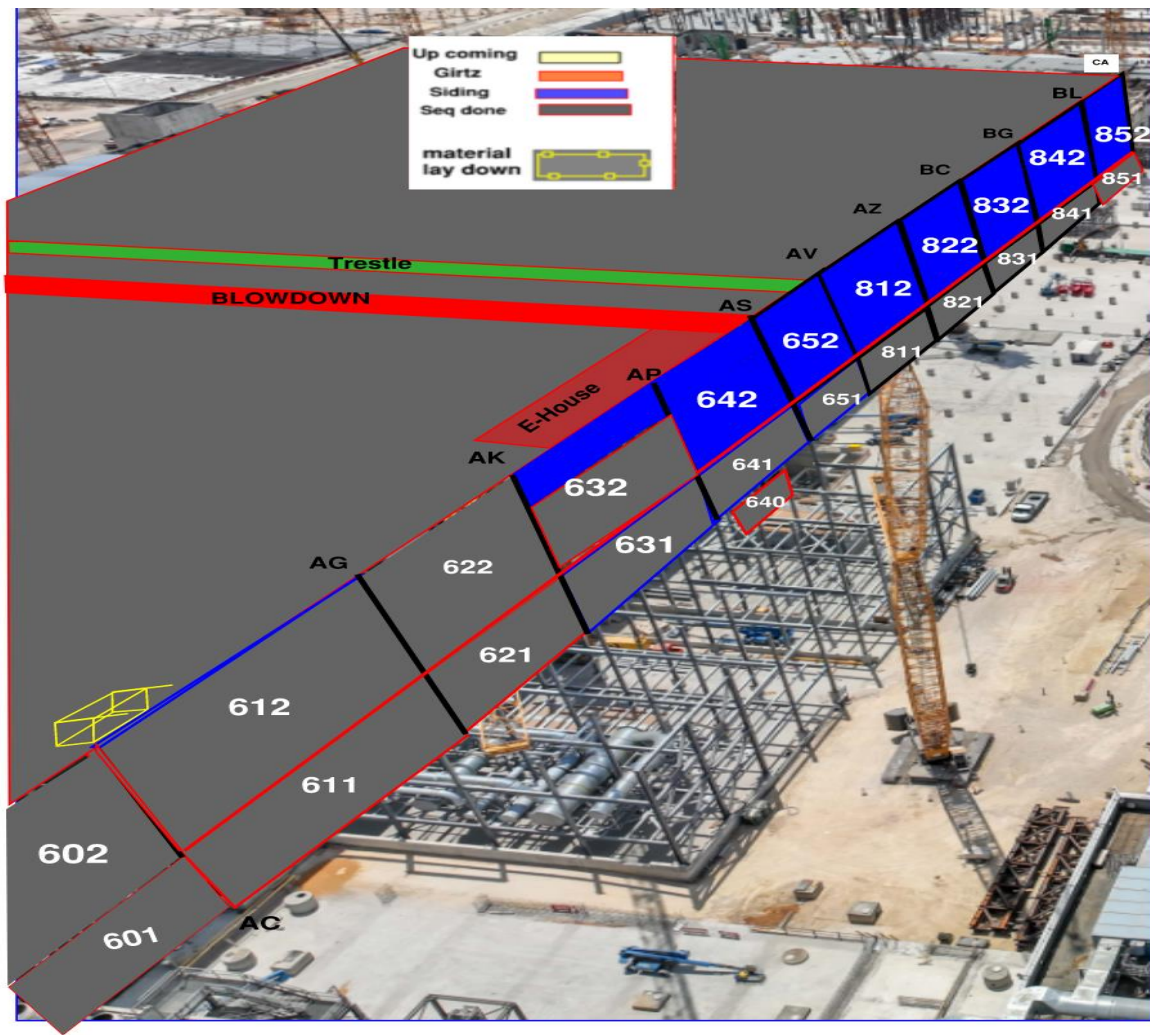
[illegible]









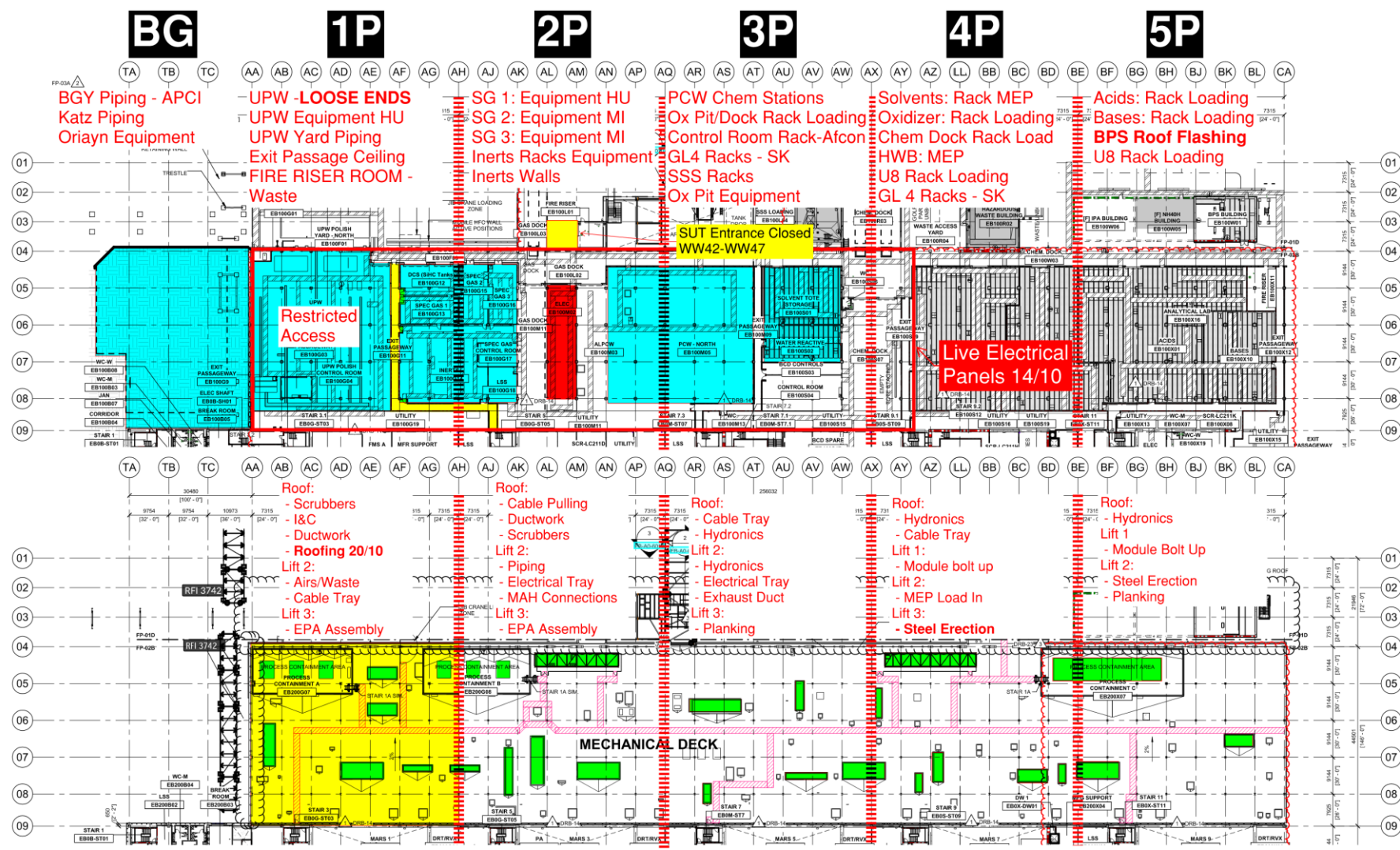




# PSSS.1

## Utility Level 1YA

## PSSS Roof 2SA



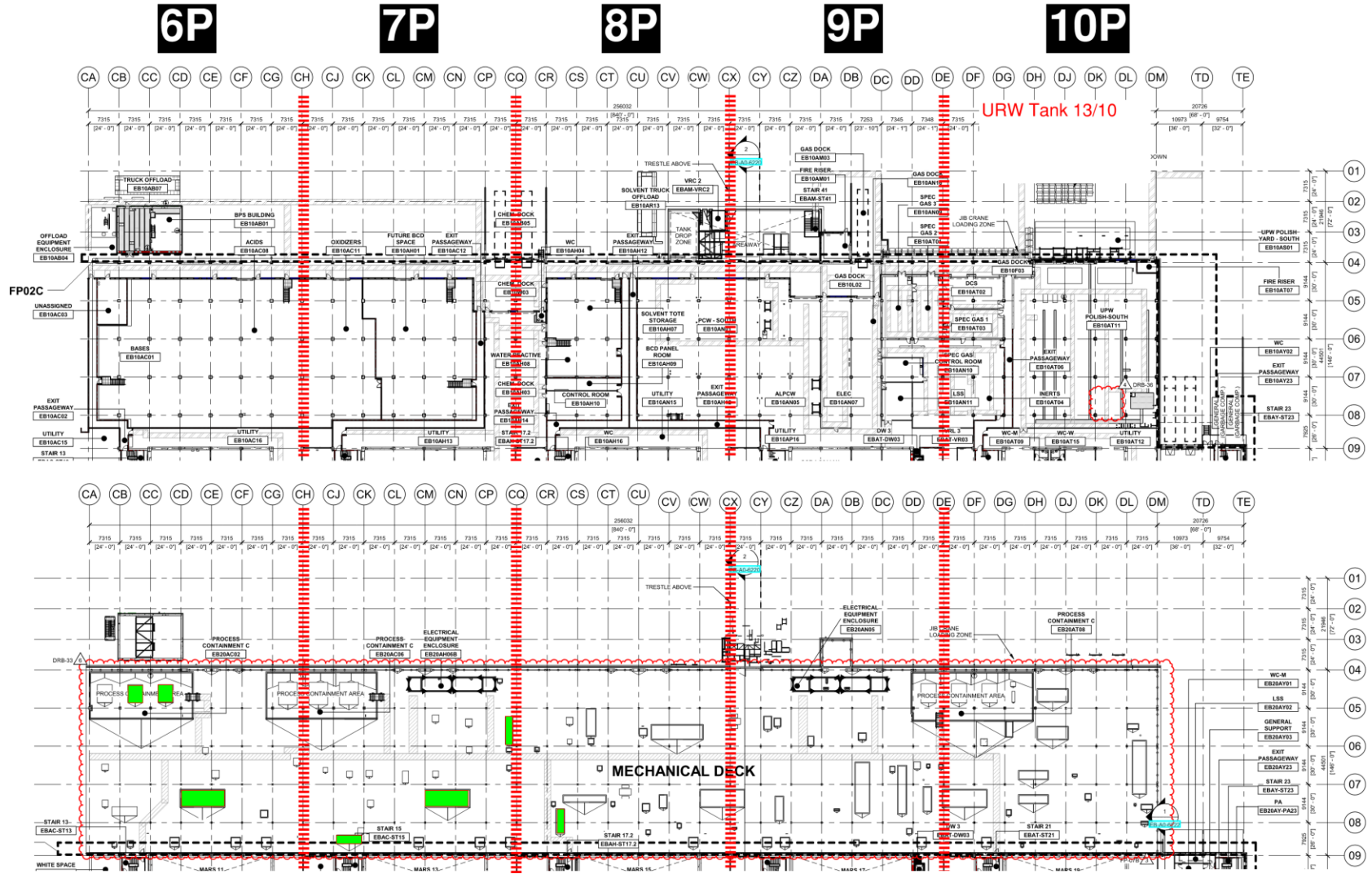


# PSSS.2

## Utility Level

### 1YA

# PSSS Roof 2SA





## WJG 01J, 02J LIFT 2 & 3







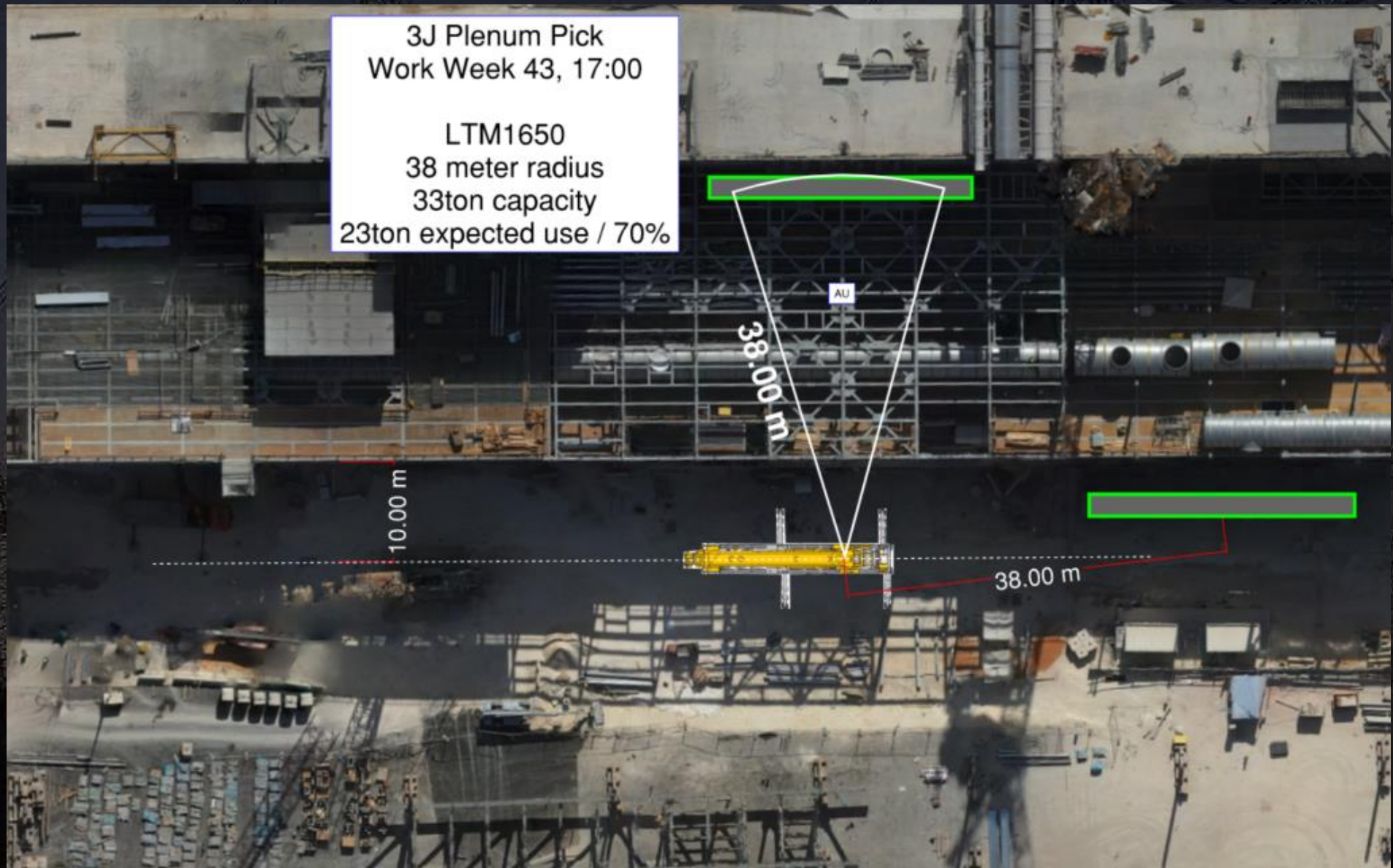
# WJG 03J, 04J, 05J LIFT 2 & 3



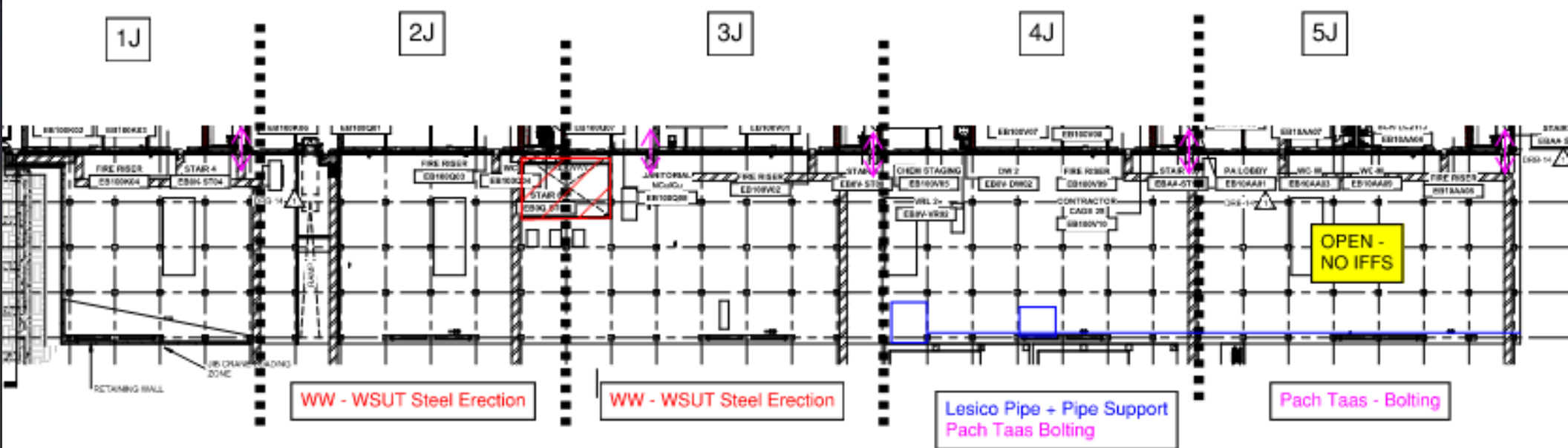




# WJG 03J Plenum Set



# WJG UTILITY LEVEL BUILD OUT



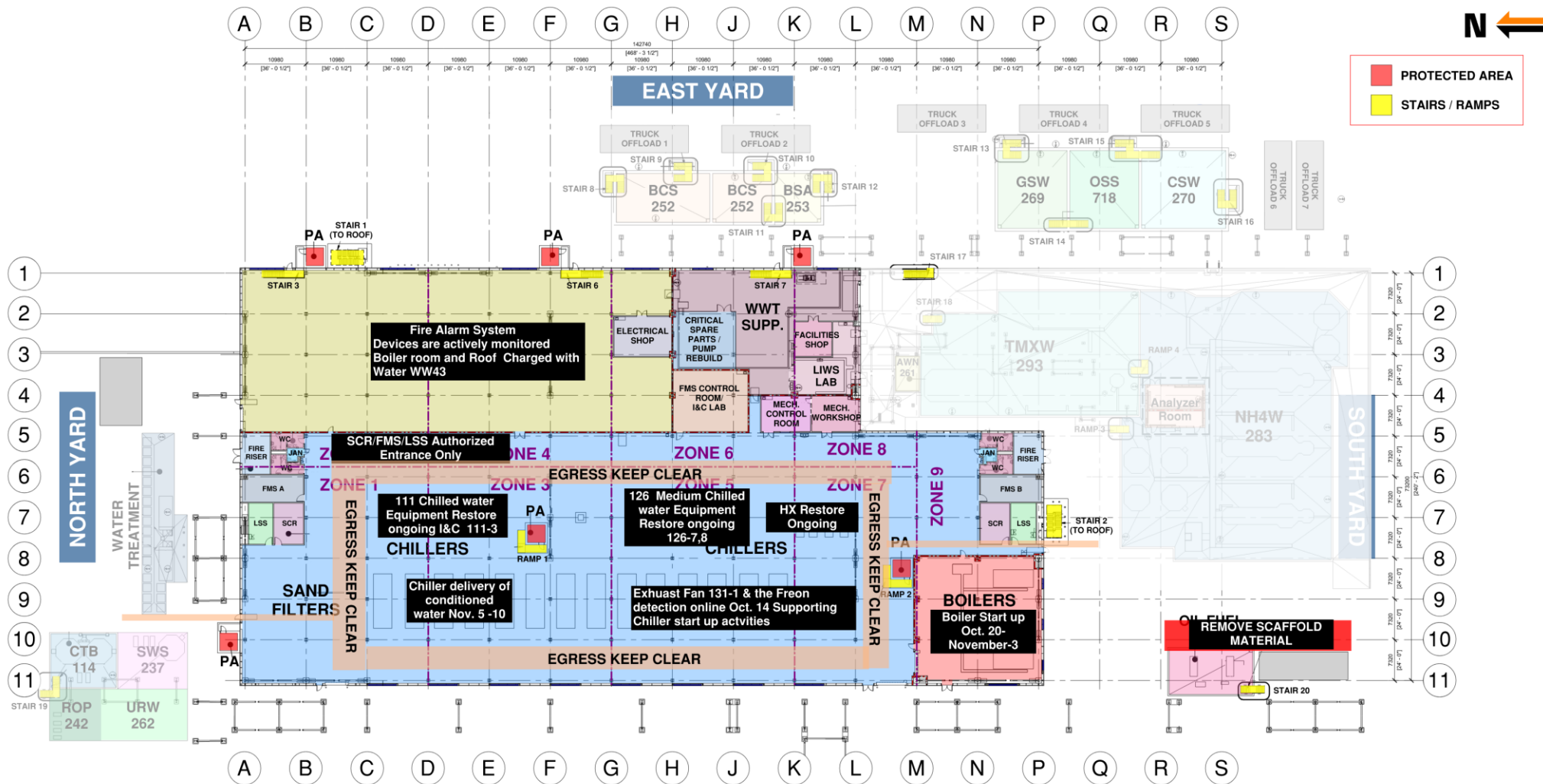




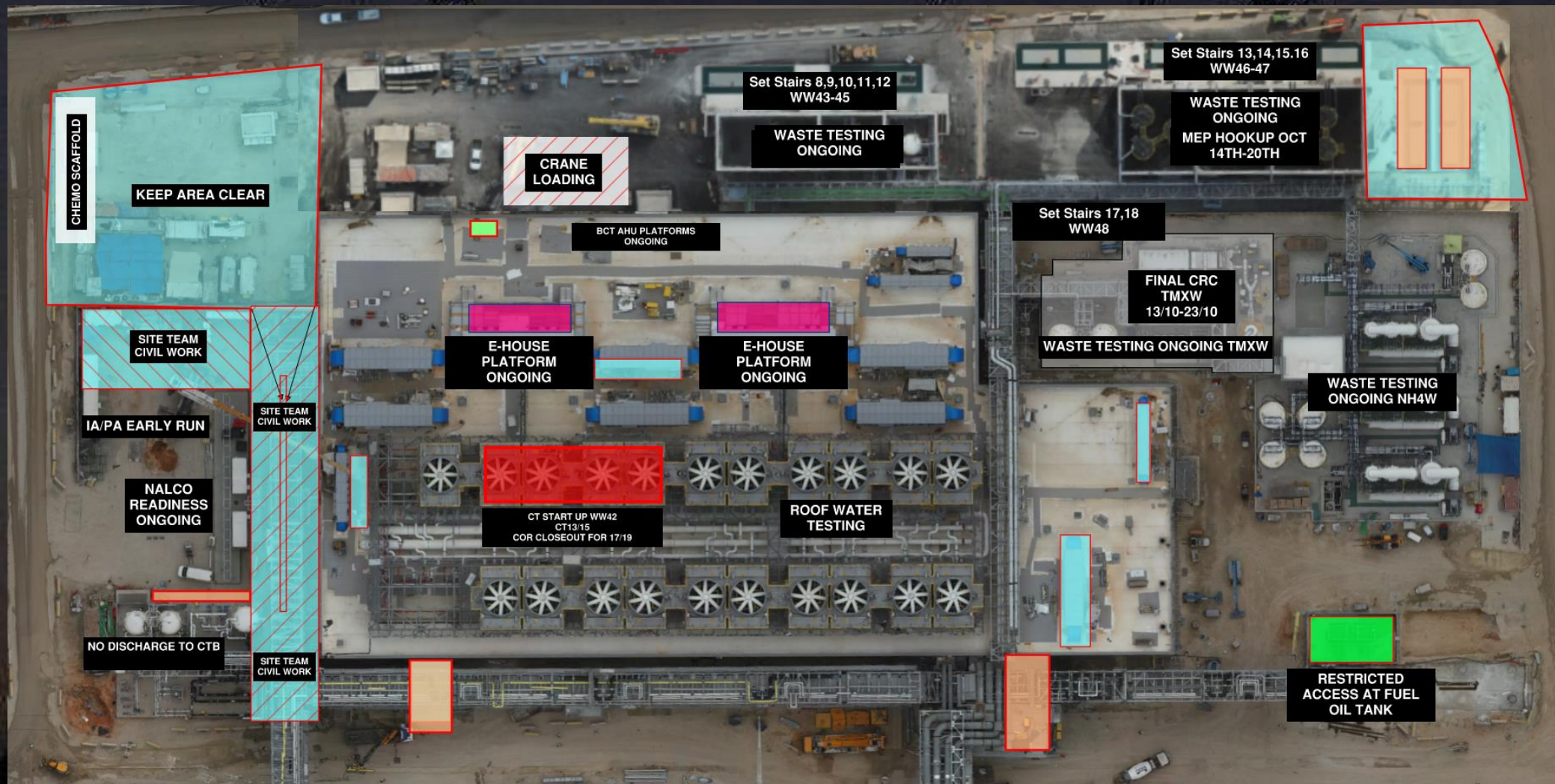
# CUB 1

## CUB 1 COORDINATION MAP

UPDATED



# CUB 1 – EXTERIOR/ROOF

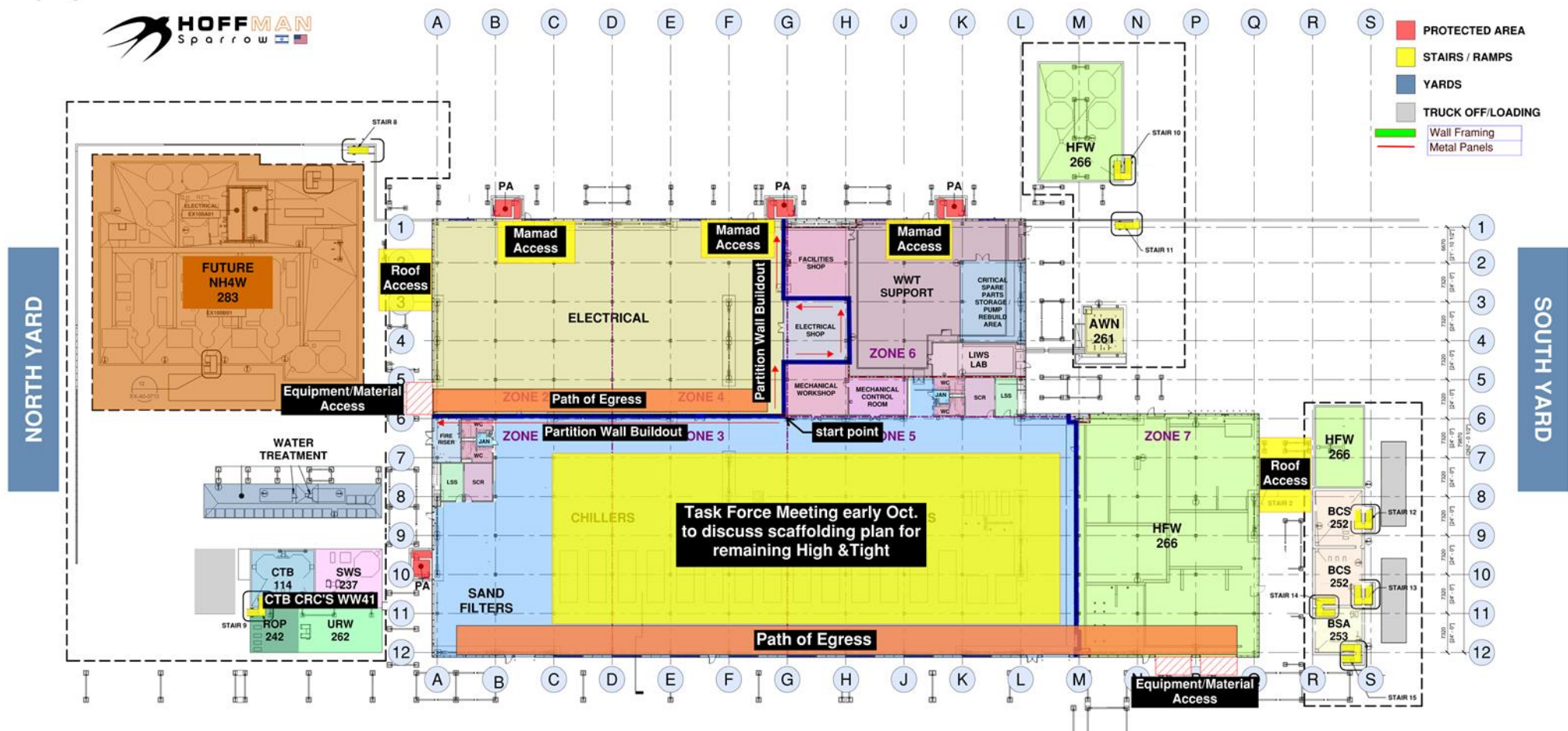






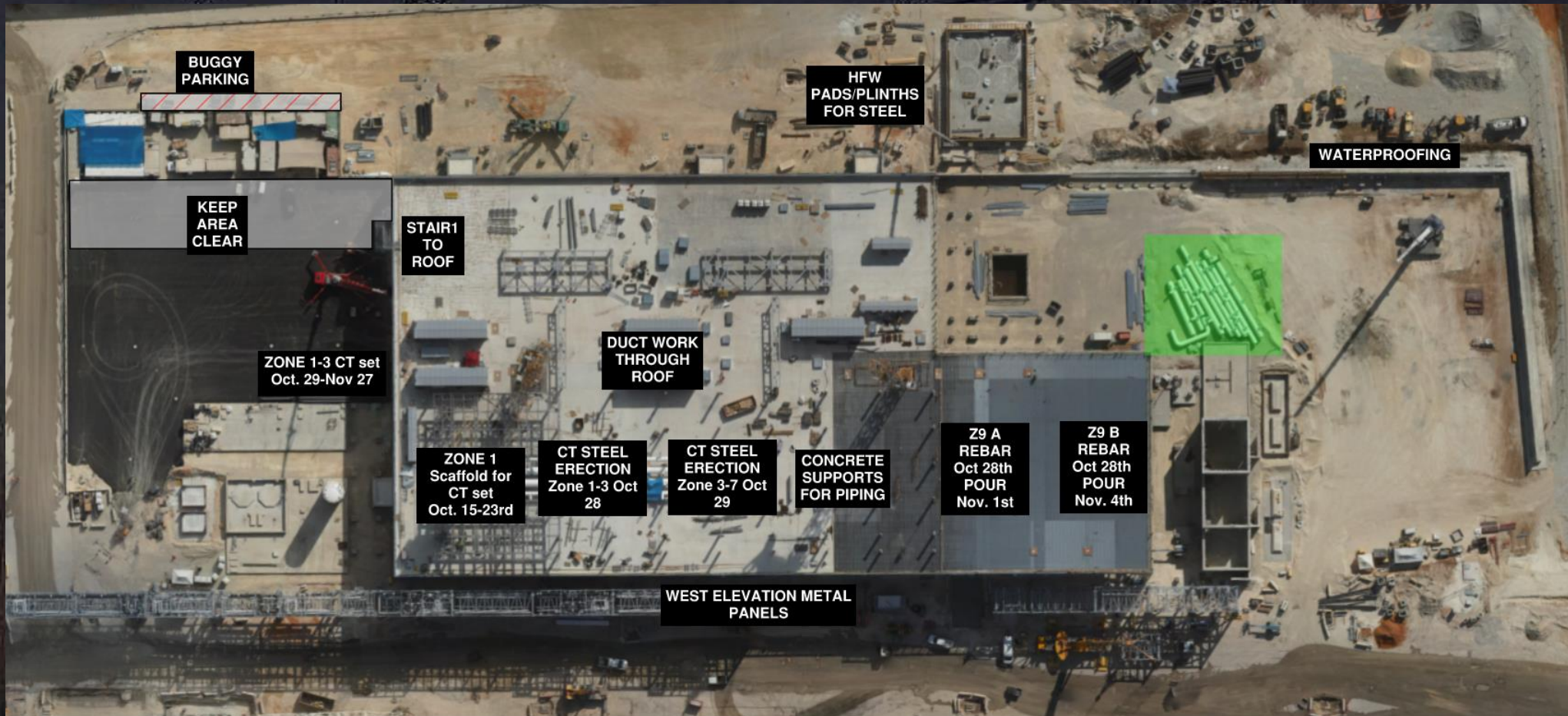
# CUB 2

## CUB 2 COORDINATION MAP





# CUB 2 – EXTERIOR/ROOF











**HOFFMAN CONSTRUCTION COMPANY**



**HOFFMAN**  
Sparrow  



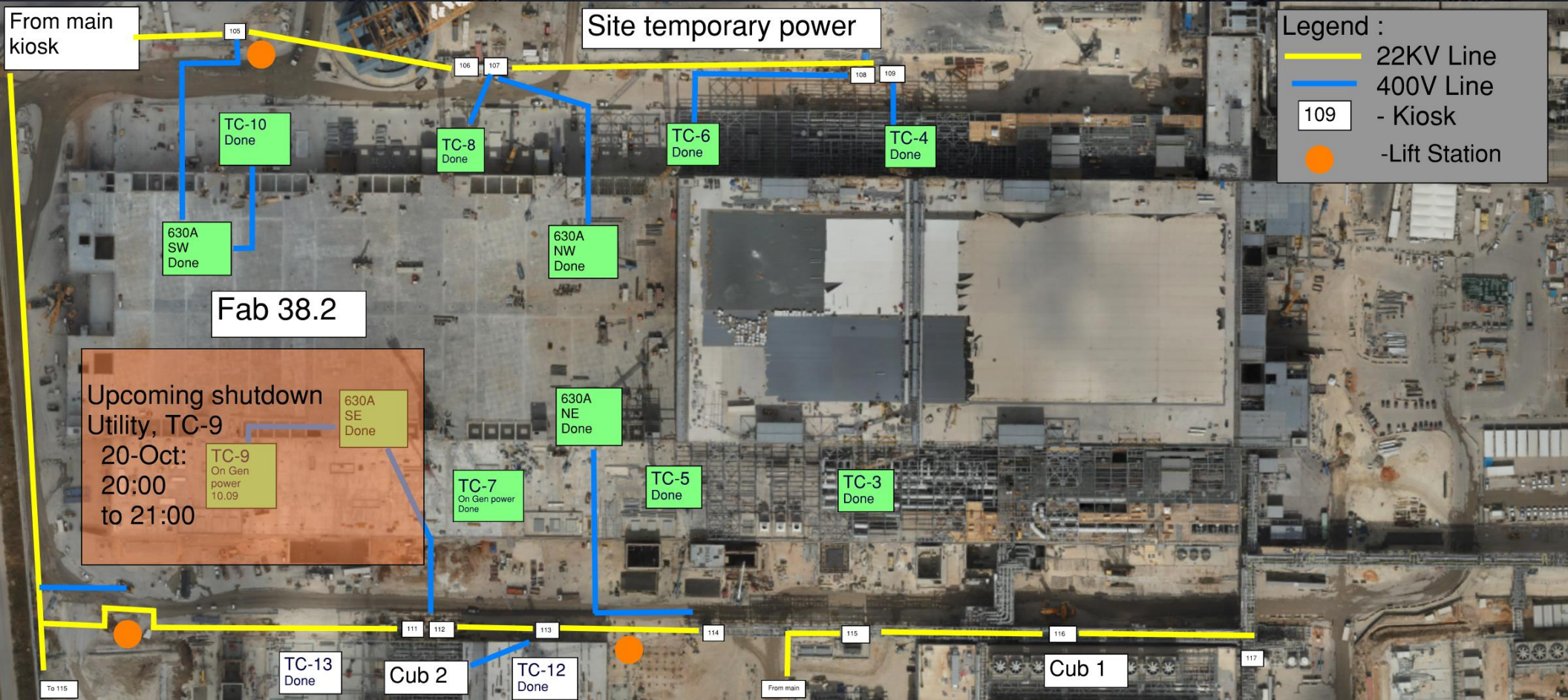
Trestle closed for work

**TRESTLE VLF-TEST**  
**TUE 15/10 - 17:30-21:30**

Intel Kiryat Gat

FAB-28









# Daily Coordination Meeting

## Site Logistics

### North



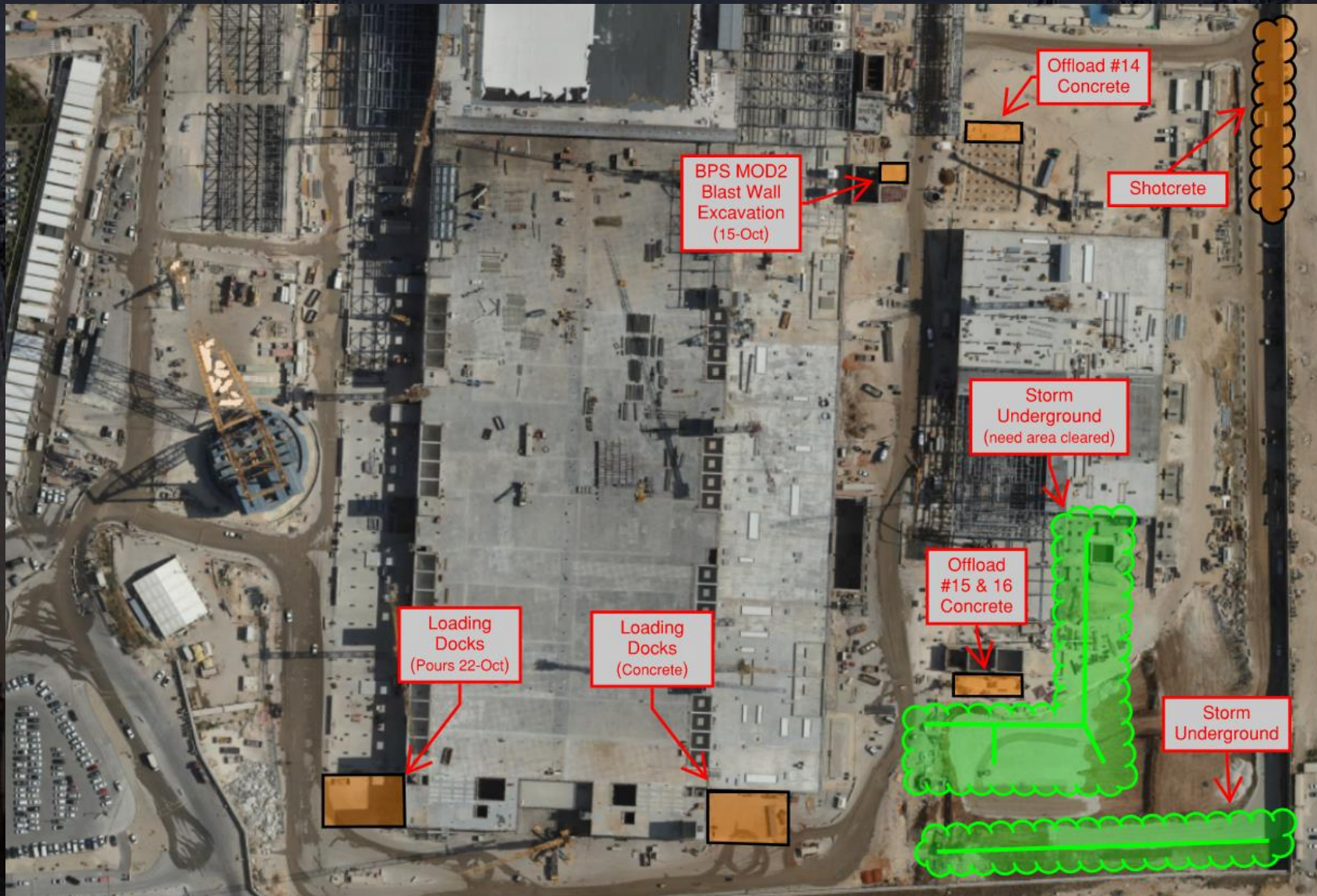




# Daily Coordination Meeting

## Site Logistics

### South

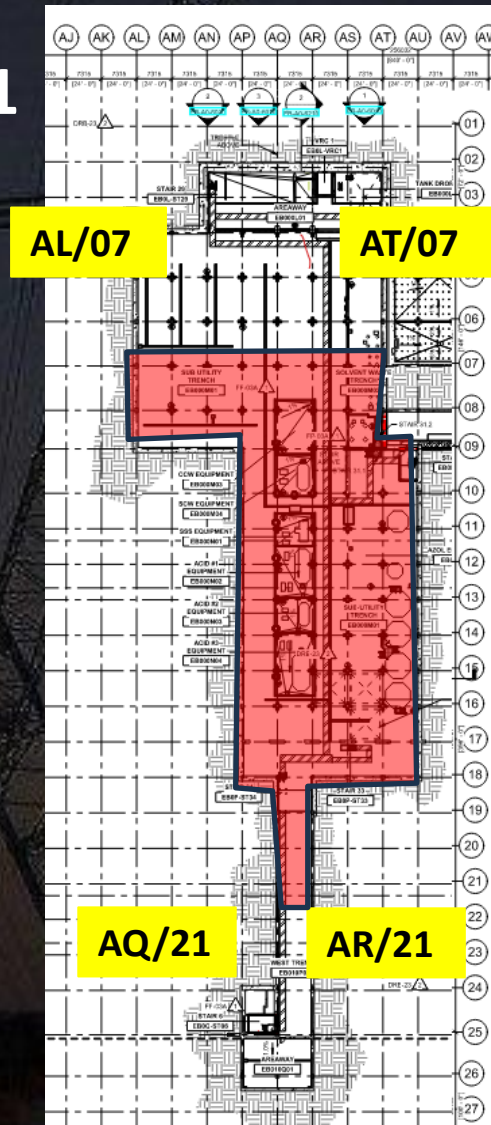




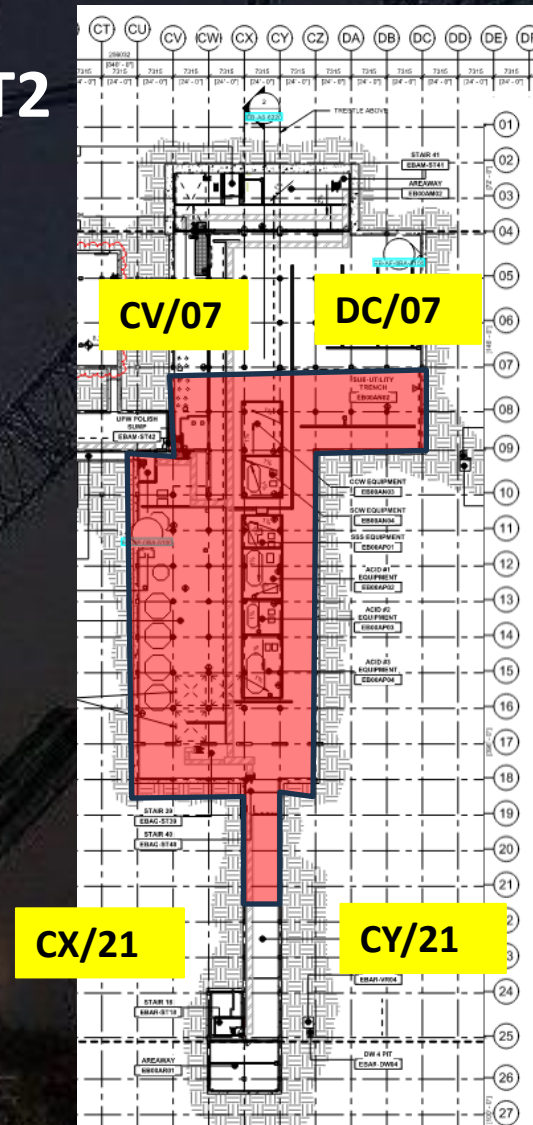
# Daily Coordination Meeting

## Site Logistics - Protected Areas (SUT Level)

**SUT1**



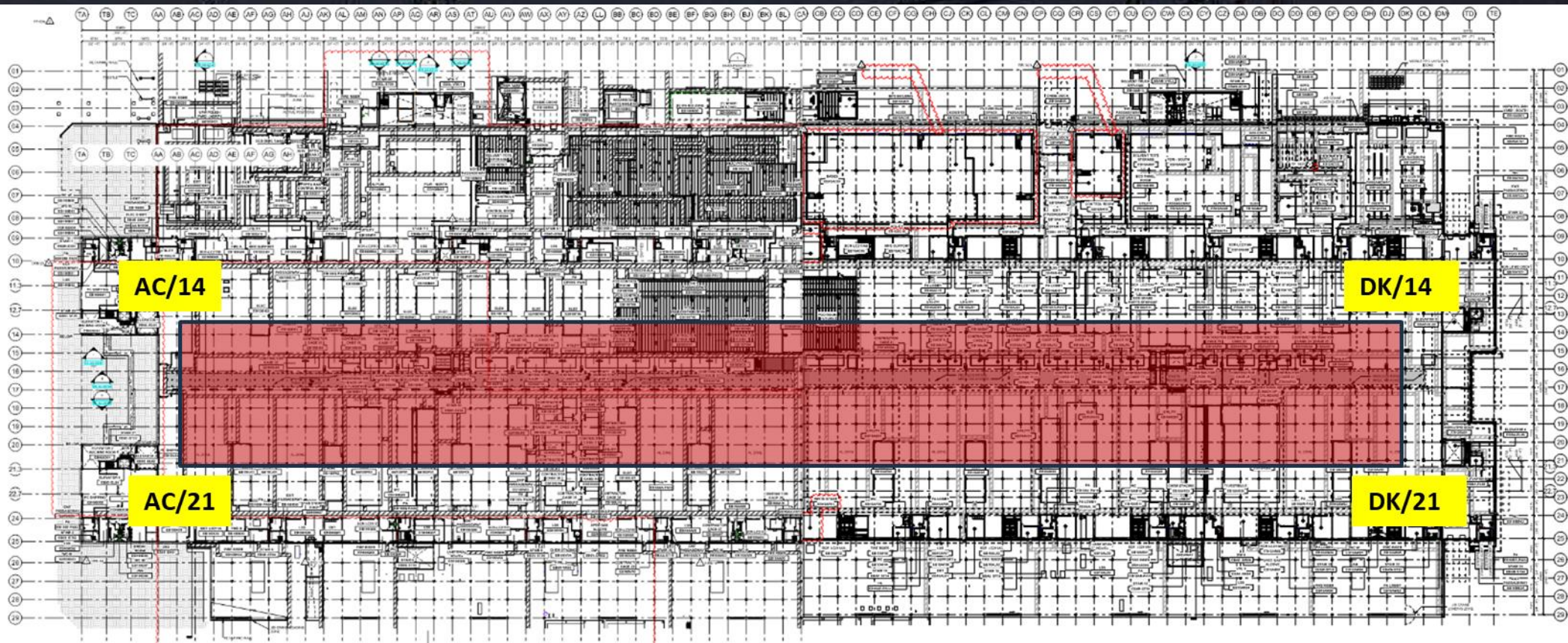
**SUT2**





# Daily Coordination Meeting

Site Logistics - Protected Areas (Utility Level)

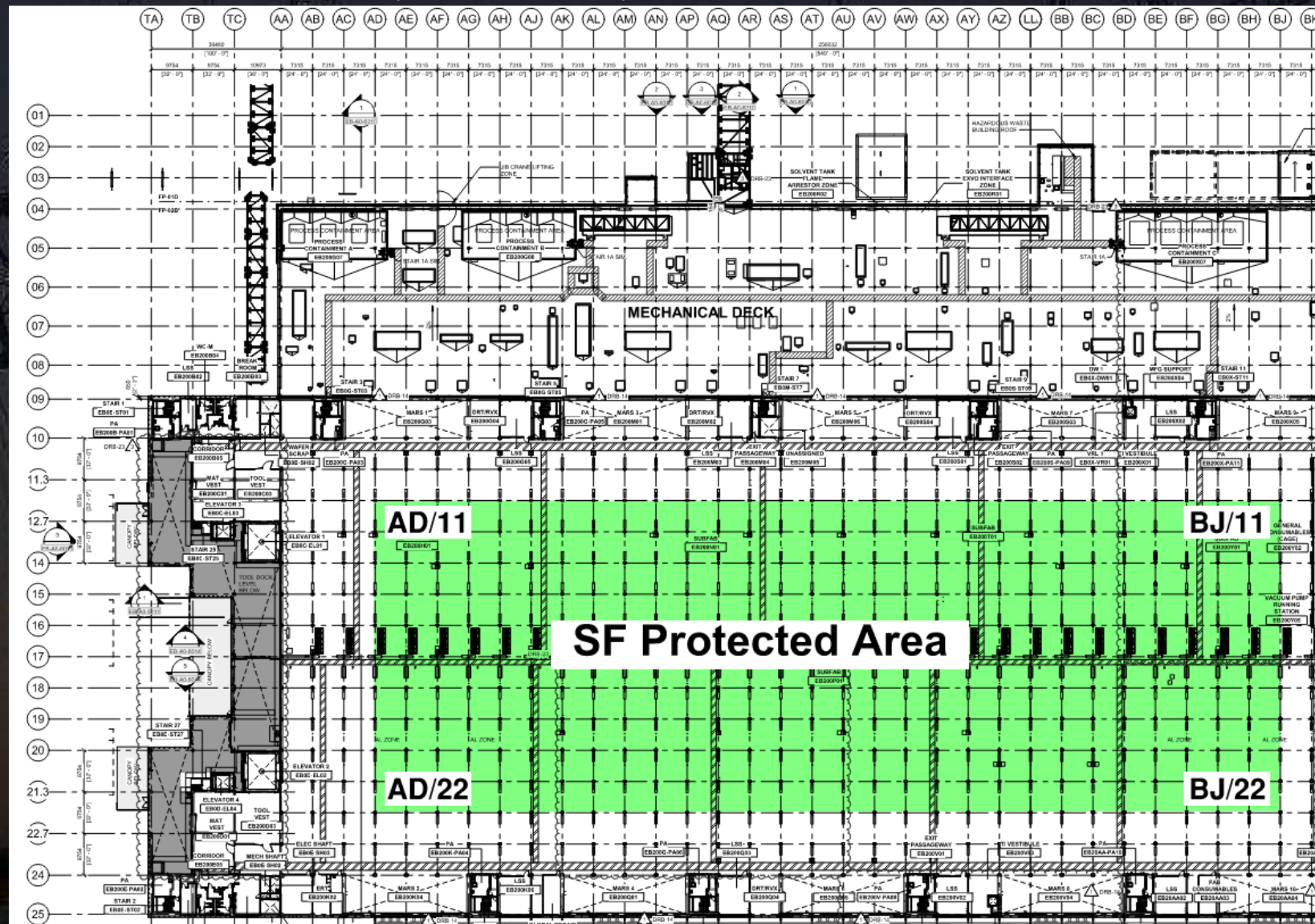






# Daily Coordination Meeting

## Site Logistics - Protected Areas (Subfab Level)

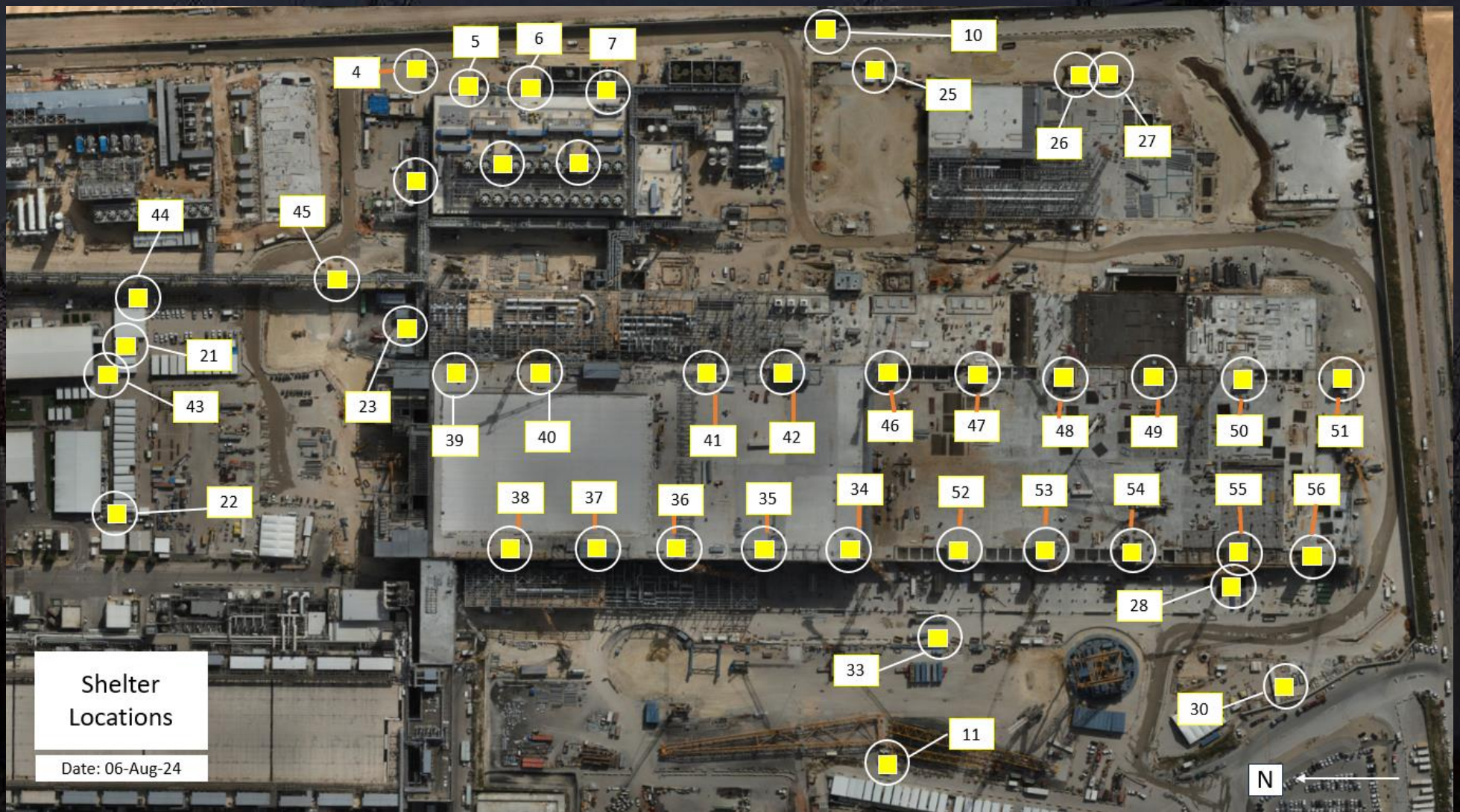




# Daily Coordination Meeting

Site Logistics

Protected Areas



# No Elevating Personnel Above Guardrail Systems

- Again, it is required for you all to ensure that proper planning is in place for accessing work for your employees.
- This is incredibly deficient when we are accessing work at heights.
- We continue to see workers standing on guardrail systems, elevating themselves above the guardrail, etc.
- The employees that are doing this are exposed to fall hazards, no different than if there wasn't a guardrail there in the first place.
- This is unacceptable, if your workers cannot reach their work from a safe position a fall protection plan **MUST** be developed and reviewed with the crew.



# Daily Coordination Meeting



14:00 Sign In